

# V&V Reference Report

## L2 ASCDS Version : 8.4.3.1

Observation 6786 - L2 Version 2  
Chandra X-Ray Center

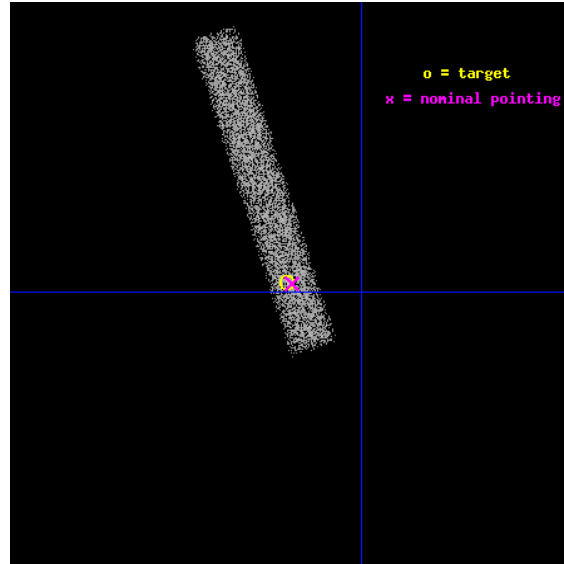
L2 Processing Date : Apr 4 2012

## Contents

<b>1</b>	<b>Front</b>	<b>2</b>
<b>2</b>	<b>OBI</b>	<b>3</b>
2.1	OBI . . . . .	3
2.1.1	Images . . . . .	3
2.1.2	Bias . . . . .	3
2.1.3	Parameters . . . . .	4
2.1.4	Events . . . . .	4
2.2	Compared Parameters . . . . .	5
2.3	Aspect . . . . .	6
2.4	Star Slots . . . . .	9
2.4.1	Slot 3 . . . . .	9
2.4.2	Slot 4 . . . . .	10
2.4.3	Slot 5 . . . . .	11
2.4.4	Slot 6 . . . . .	12
2.4.5	Slot 7 . . . . .	13
2.5	FID Slots . . . . .	14
2.5.1	Slot 0 . . . . .	14
2.5.2	Slot 1 . . . . .	15
2.5.3	Slot 2 . . . . .	16
<b>A</b>	<b>Summary</b>	<b>17</b>
A.1	Status . . . . .	17
A.2	Comments . . . . .	17

# 1 Front

seq_num	701204	Sequence number
obs_id	6786	Observation id
title	Active Galactic Nuclei in nearby galaxies: a new view of the origin of the radio-loud radio-quiet dichotomy?	Proposal title
observer	Dr. Alessandro Capetti	Principal investigator
object	UGC8499	Source name
dtcycle	0	&#160
cycle	P	events from which exps? Prim/Second/Both
ra_targ	202.5475	Observer's specified target RA [deg]
dec_targ	46.670833	Observer's specified target Dec [deg]
ra_nom	202.54462479917	Nominal RA [deg]
dec_nom	46.670156235547	Nominal Dec [deg]
roll_nom	252.08777752283	Nominal Roll [deg]
revision	2	Processing version of data
ontime	14968.399107814	Sum of GTIs [s]
livetime	13575.5478939	Livetime [s]
ontime7	14968.399107814	Sum of GTIs [s]
l2events	10575	Number of level 2 events

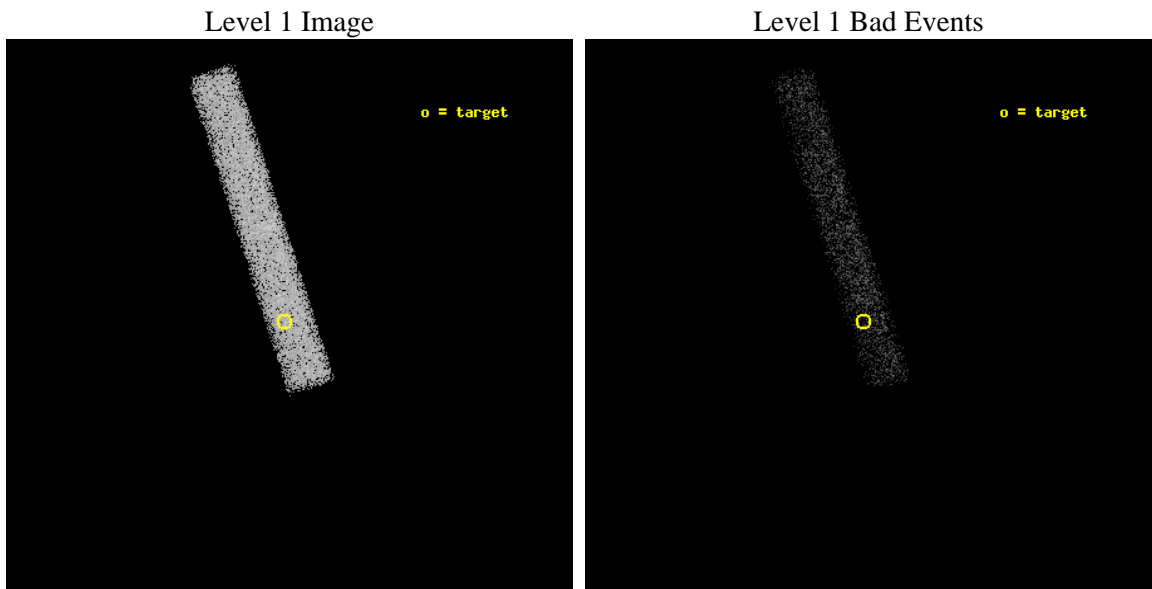




## 2 OBI

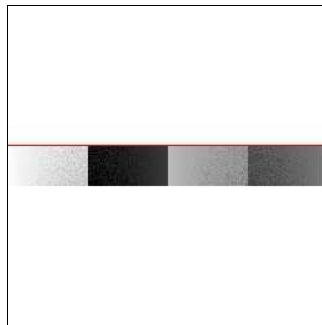
### 2.1 OBI

#### 2.1.1 Images



#### 2.1.2 Bias

Chip 7



### 2.1.3 Parameters

obi_num	0	Obi number	sched_exp_time	14785.370000	[s] Scheduled observation exposure time
ascdsver	8.4.3.1	Processing system revision	ontime	14968.399107814	Sum of GTIs [s]
caldsver	4.4.9	&#160	ontime7	14968.399107814	Sum of GTIs [s]
date	2012-04-04T21:20:07	Date and time of file creation	l1events	24756	Number of level 1 events
revision	2	Processing version of data			

### 2.1.4 Events

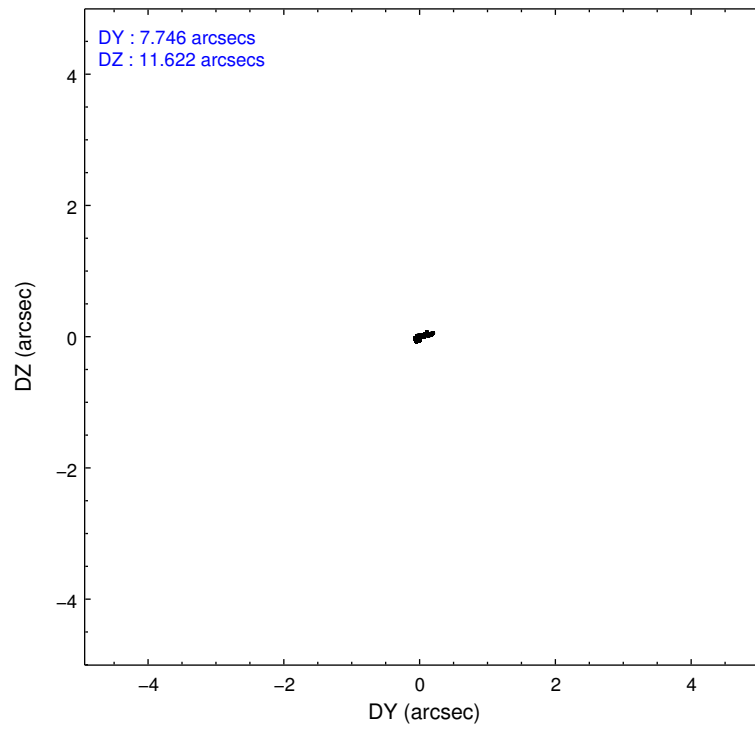
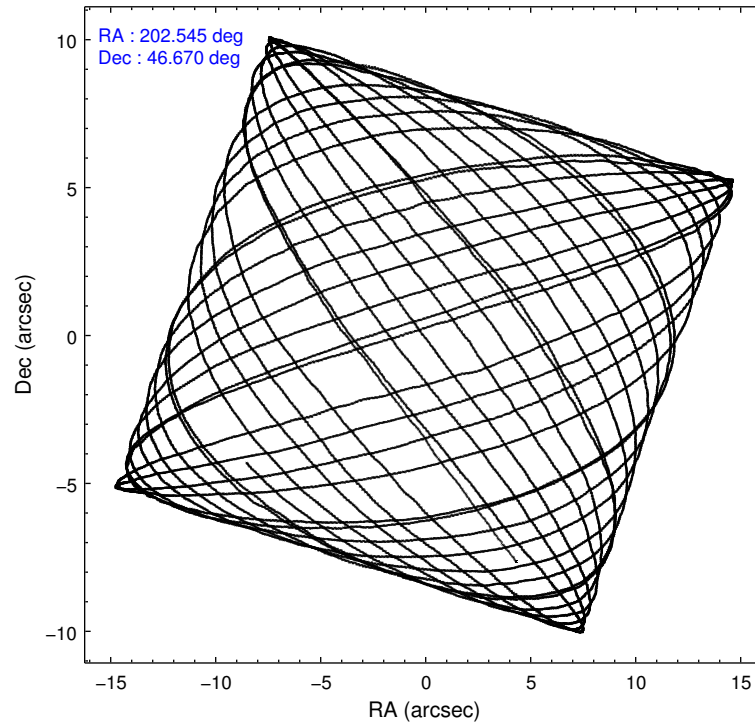
	<b>ccd 7</b>
level 1 events	24756
rejected events	13757
rejected %	55%

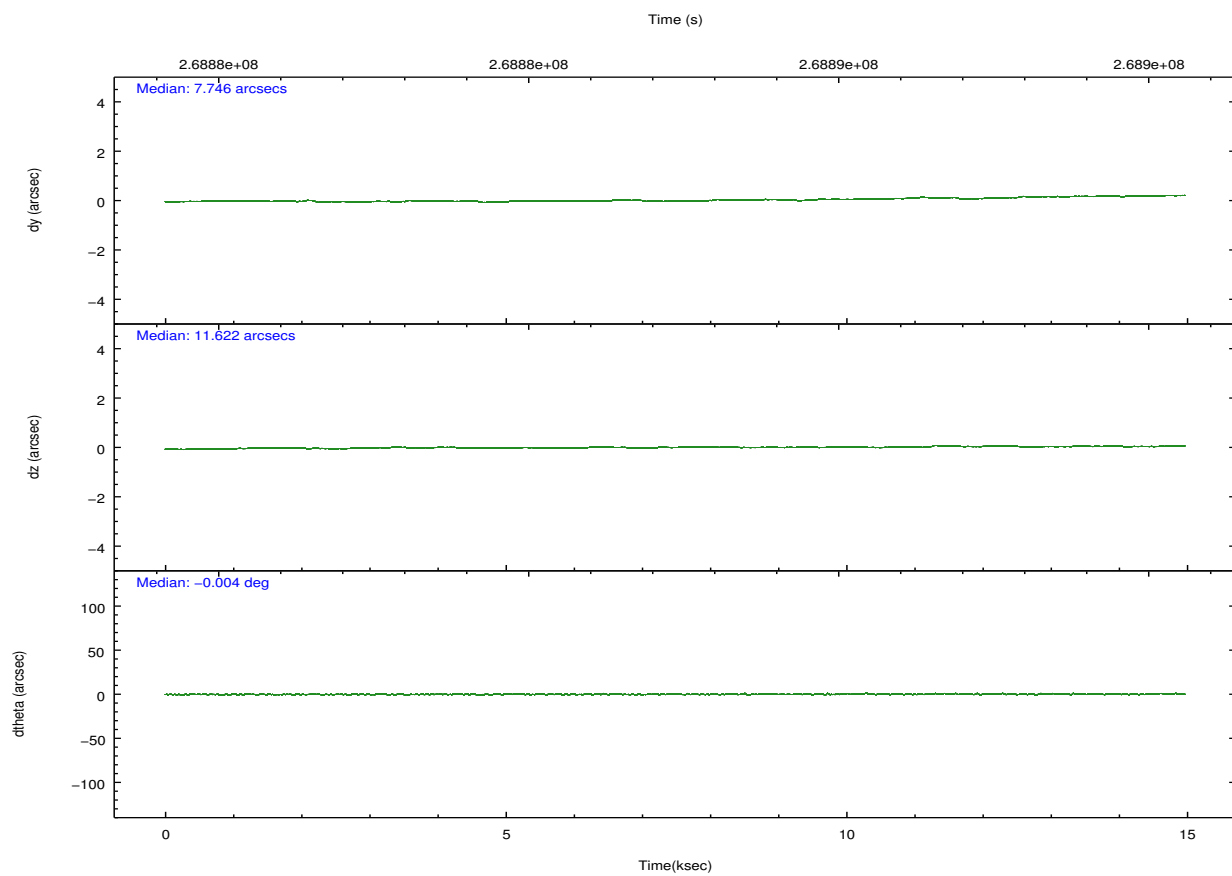
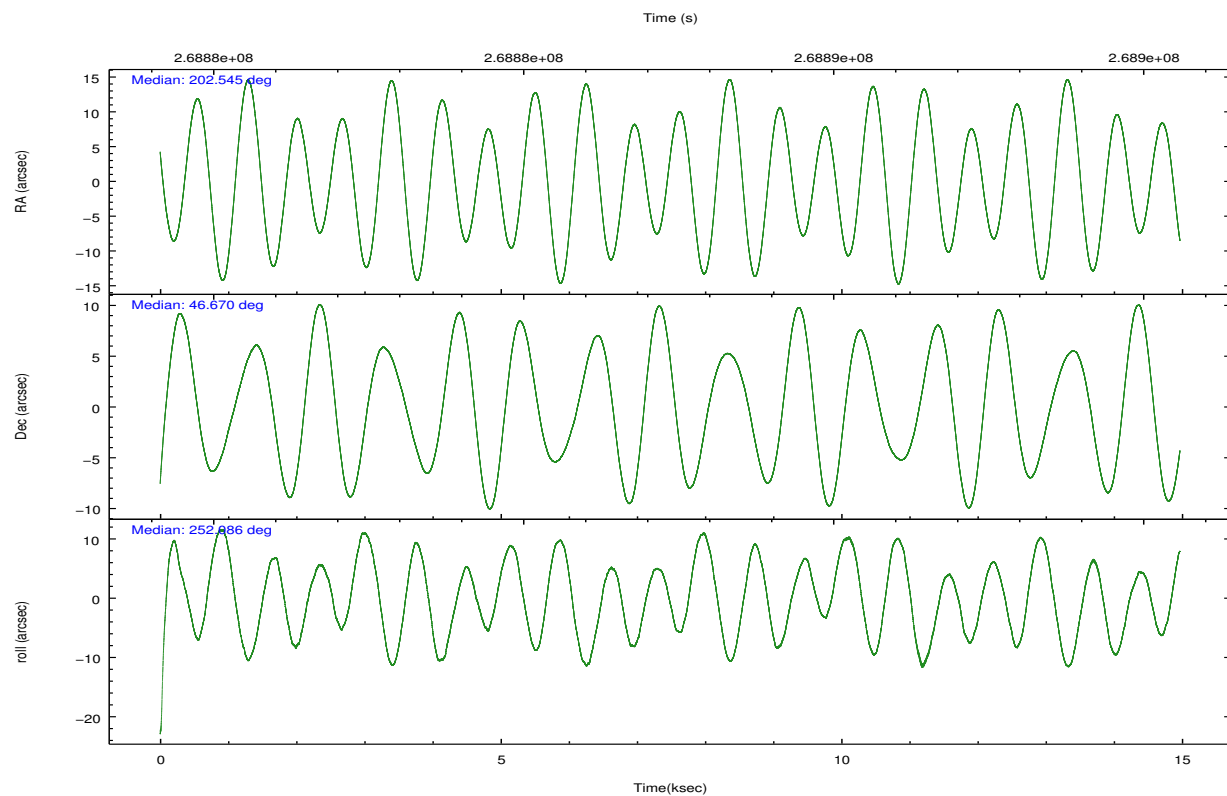
	<b>ccd 7</b>
grade 0 events	1259
	5%
grade 1 events	19
	0%
grade 2 events	2210
	8%
grade 3 events	1419
	5%
grade 4 events	1427
	5%
grade 5 events	2275
	9%
grade 6 events	5240
	21%
grade 7 events	10907
	44%

## 2.2 Compared Parameters

Parameter	Planned	Actual	Parameter	Planned	Actual
Instrument	ACIS	ACIS	Obspar format version number	7	7
Detector	ACIS-7	ACIS-7	Obspar file type	PREDICTED	ACTUAL
Grating	NONE	NONE	Obspar update status	NONE	UPDATED
Data mode	VFAINT	VFAINT	Number of optional ACIS chips dropped	0	0
Observation mode	POINTING	POINTING	On-chip summing requested	N	N
[deg] Pointing RA	202.535787	202.5446247991656	Subarray requested	CUSTOM	1/8
[deg] Pointing Dec	46.696707	46.67015623554666	Subarray start row	449	449
[deg] Pointing Roll	251.937604	252.0877775228339	Subarray row count	128	128
[mm] SIM focus pos	-0.684267	-0.6828225247311905	Alternating exposures requested	N	N
[mm] SIM defocus	0	0.001444936568705701	[s] Primary exposure time	0.000000	0.4
[mm] SIM translation stage pos	-190.132523	-190.1400660498719			
[mm] SIM translation stage offset	0	0.00754346686406393			
[s] Observation start time (MET)	268880049.184000	268879074.19309			
Observation start date	2006-07-10T00:53:04	2006-07-10T00:37:54			
[s] Observation end time (MET)	268894835.184000	268895058.55634			
Observation end date	2006-07-10T04:59:30	2006-07-10T05:04:18			
Read mode	TIMED	TIMED			

## 2.3 Aspect



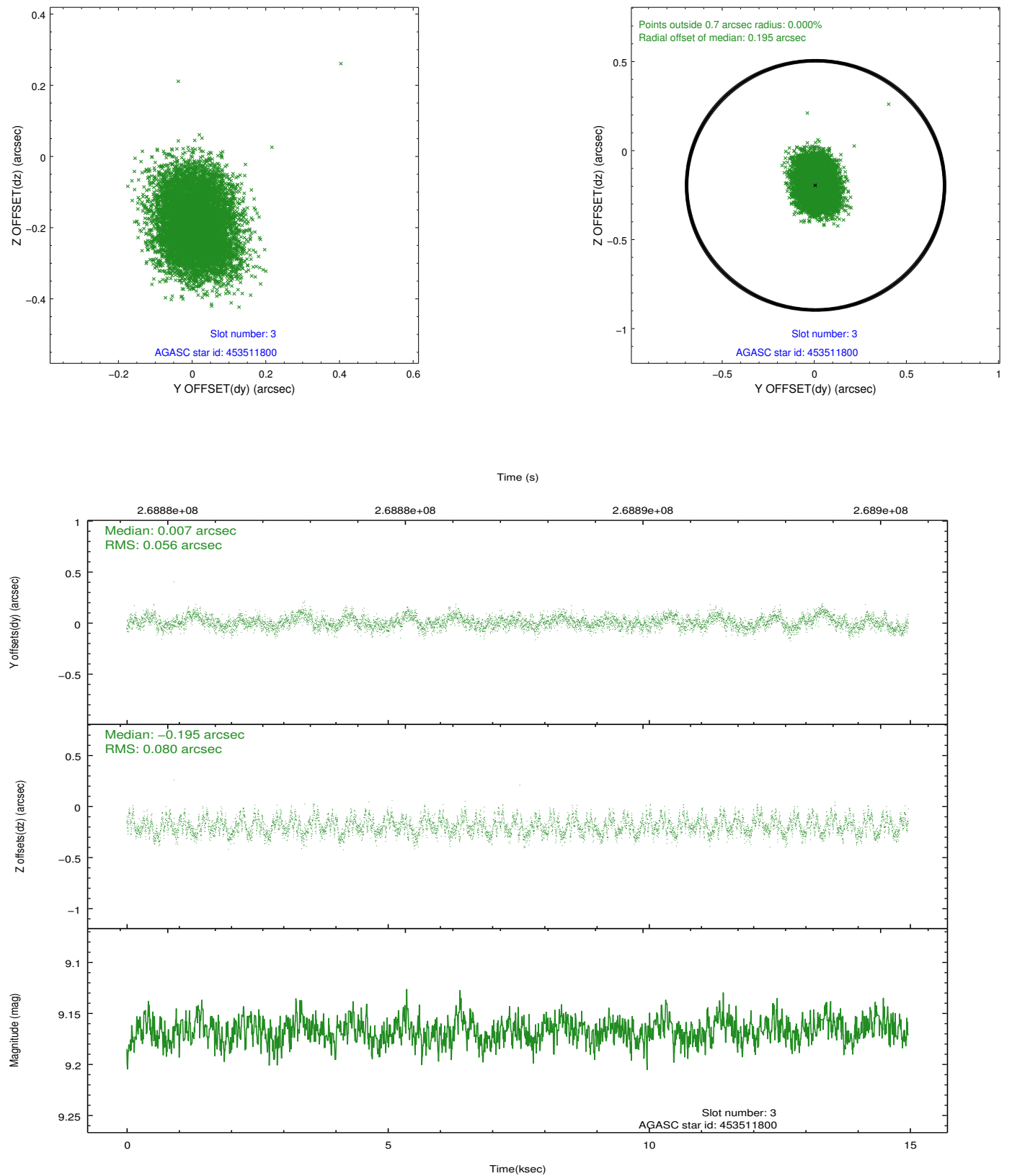


### Slot Statistics

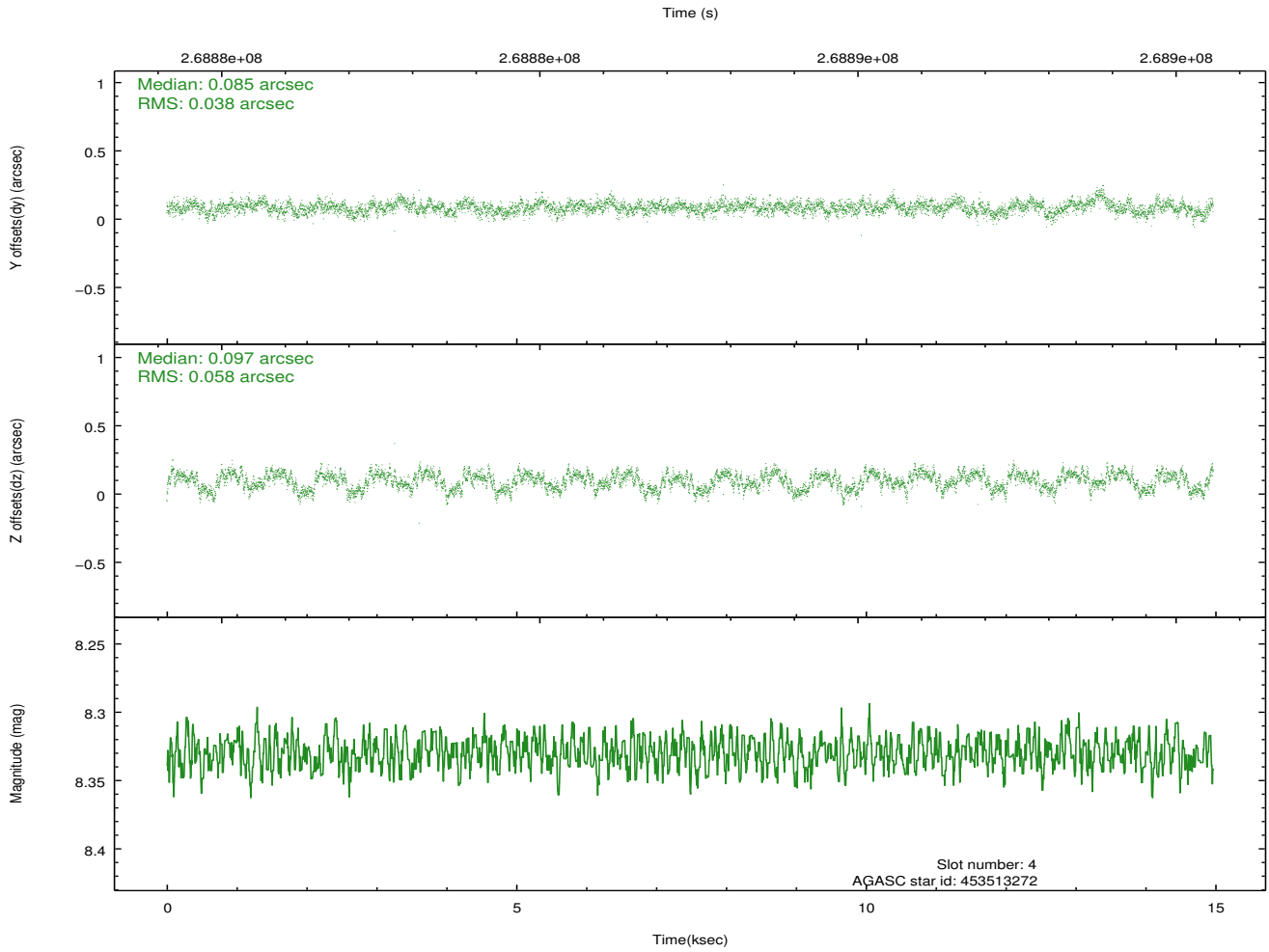
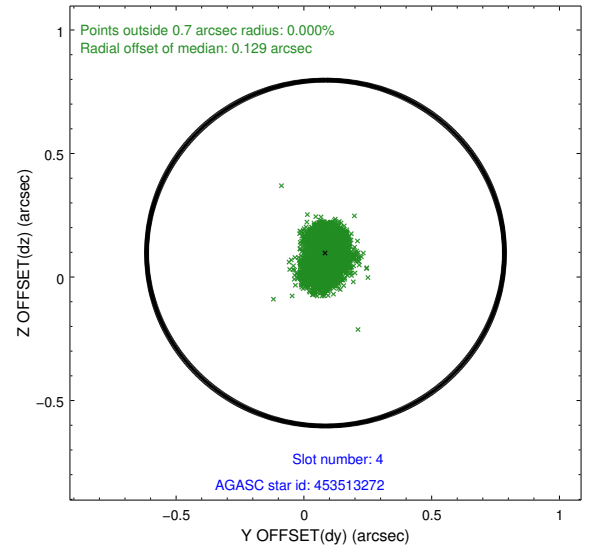
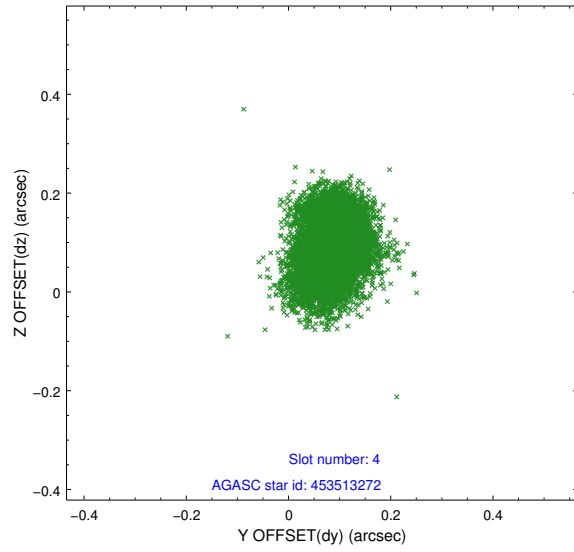
slot	status	id	mag	n_pts	med_dy	med_dz	dr1	dr2	ra	dec	mean_y	mean_z
0	FID	ACIS-S-2	7.10	3651	-0.028	-0.019	0.007	0.011	0.000000	0.000000	-760.57	-1732.93
1	FID	ACIS-S-4	7.21	3651	0.096	0.019	0.006	0.010	0.000000	0.000000	2152.68	175.29
2	FID	ACIS-S-5	7.23	3651	-0.099	0.009	0.008	0.013	0.000000	0.000000	-1813.11	169.27
3	GUIDE	453511800	9.17	7295	0.007	-0.195	0.106	0.165	201.825327	46.820165	112.80	-1804.55
4	GUIDE	453513272	8.33	7301	0.085	0.097	0.075	0.119	202.328071	46.370917	1274.70	-126.94
5	GUIDE	453513296	10.23	7292	0.153	-0.079	0.215	0.337	202.108462	46.280446	1752.18	-546.83
6	GUIDE	453904608	7.38	7303	-0.149	0.166	0.075	0.113	202.983748	47.234418	-2182.55	440.17
7	GUIDE	453904928	8.69	7297	-0.096	-0.008	0.074	0.118	203.391671	46.796779	-1007.75	1890.41

## 2.4 Star Slots

### 2.4.1 Slot 3

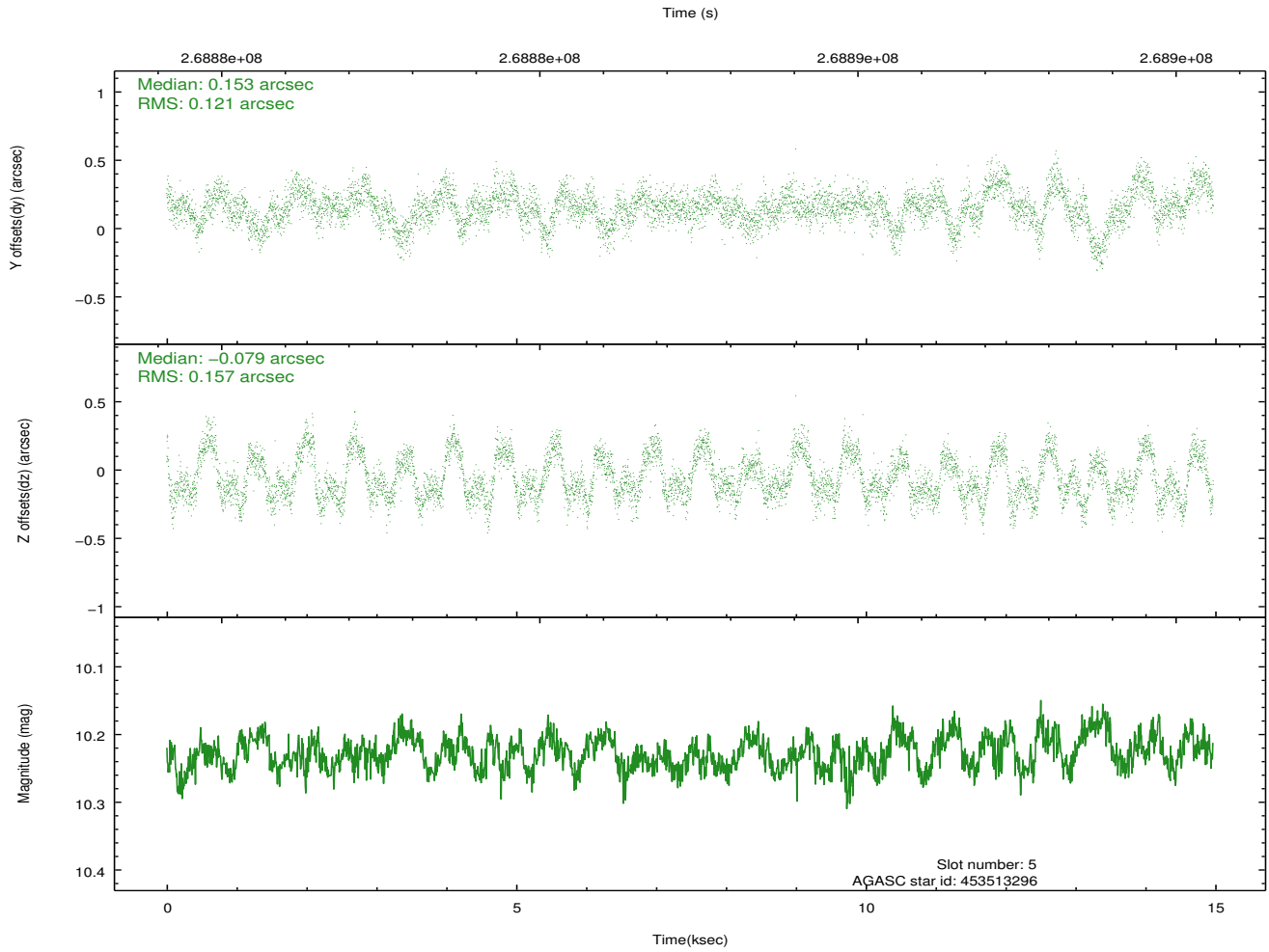
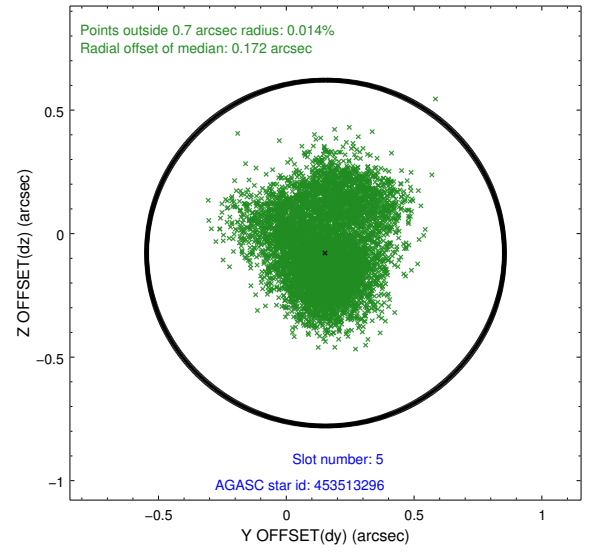
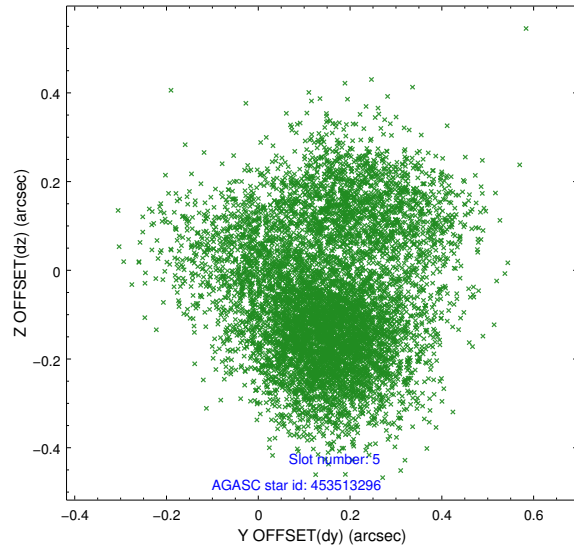


## 2.4.2 Slot 4

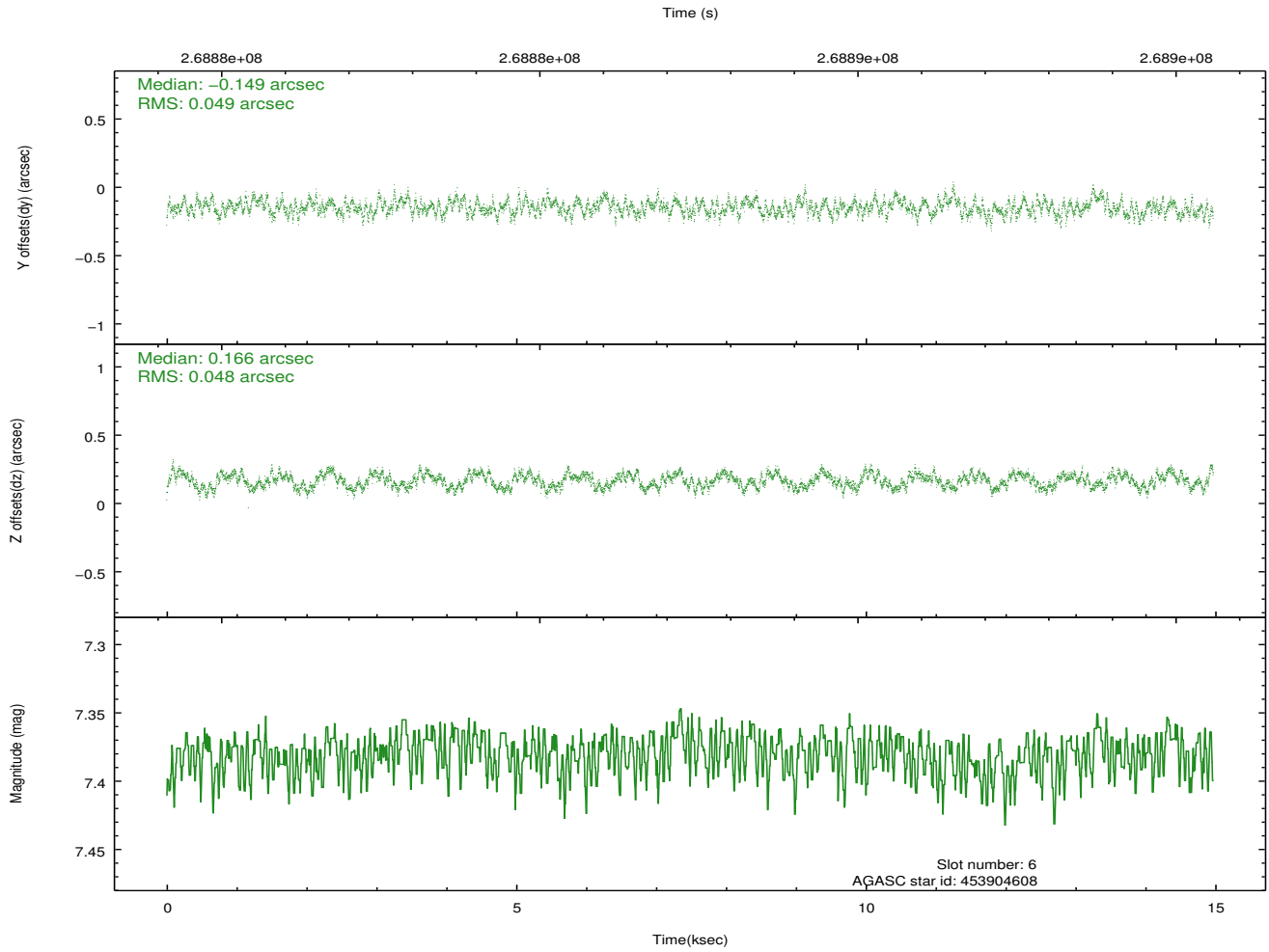
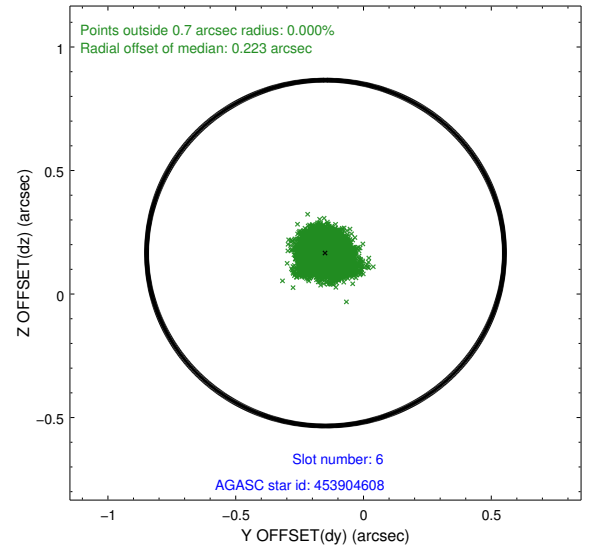
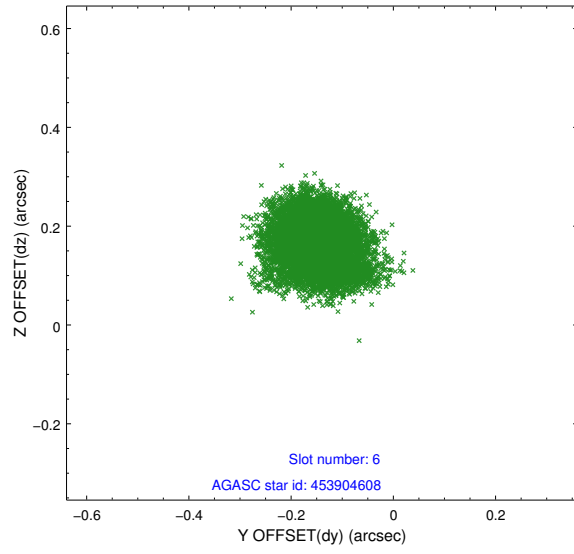




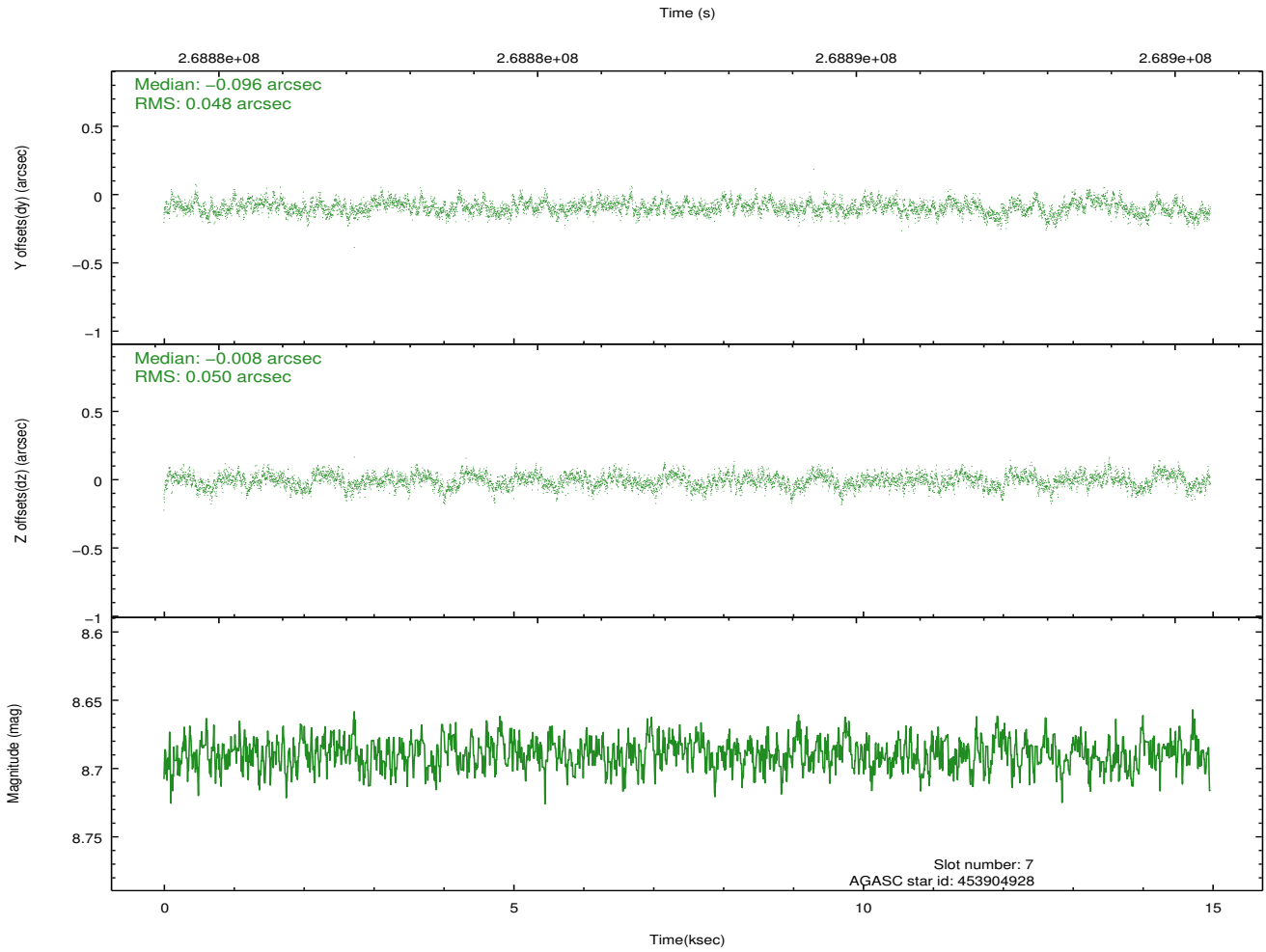
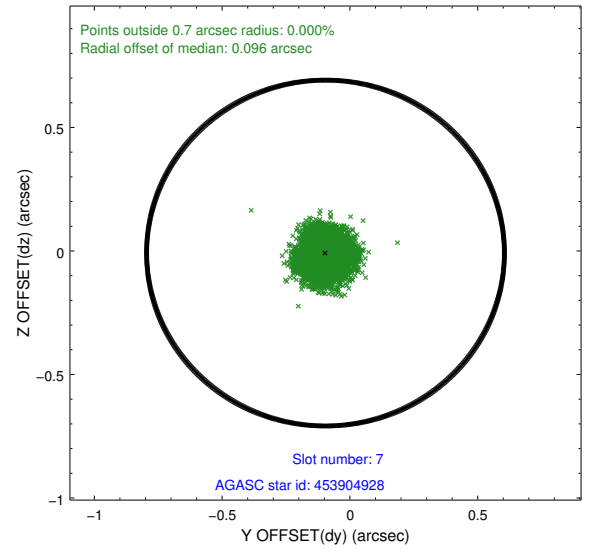
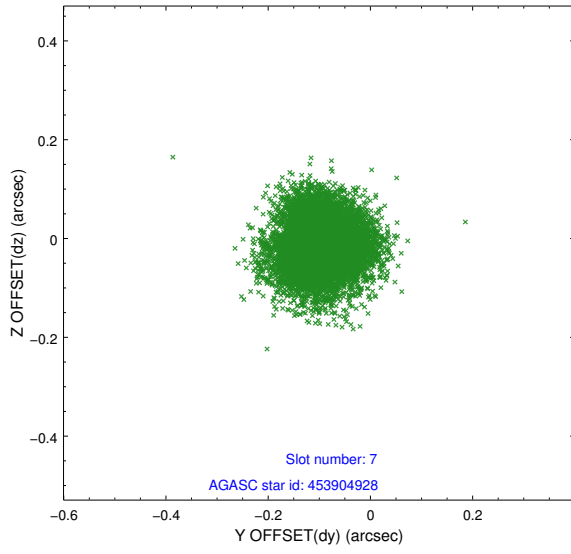
### 2.4.3 Slot 5



## 2.4.4 Slot 6

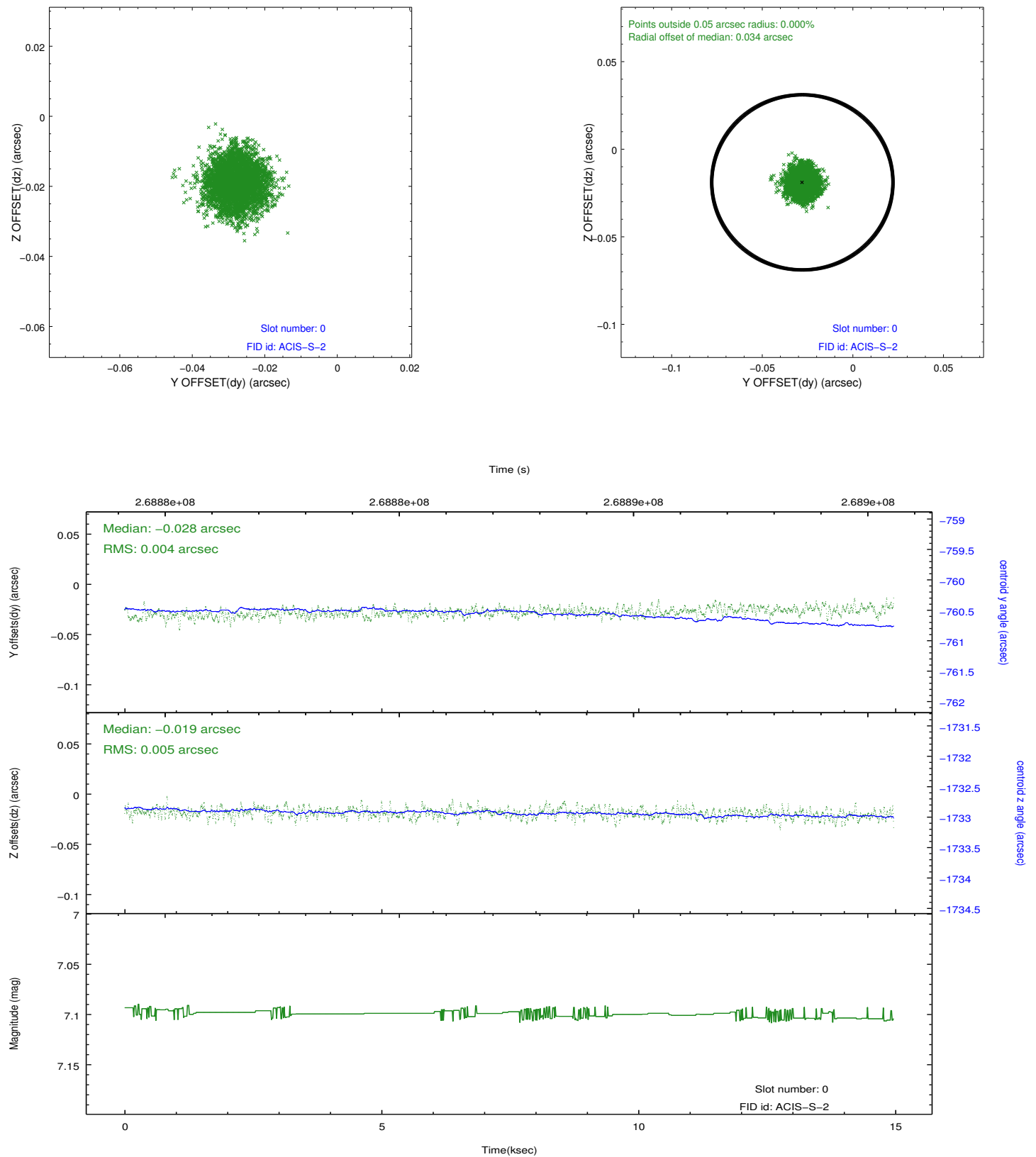


### 2.4.5 Slot 7

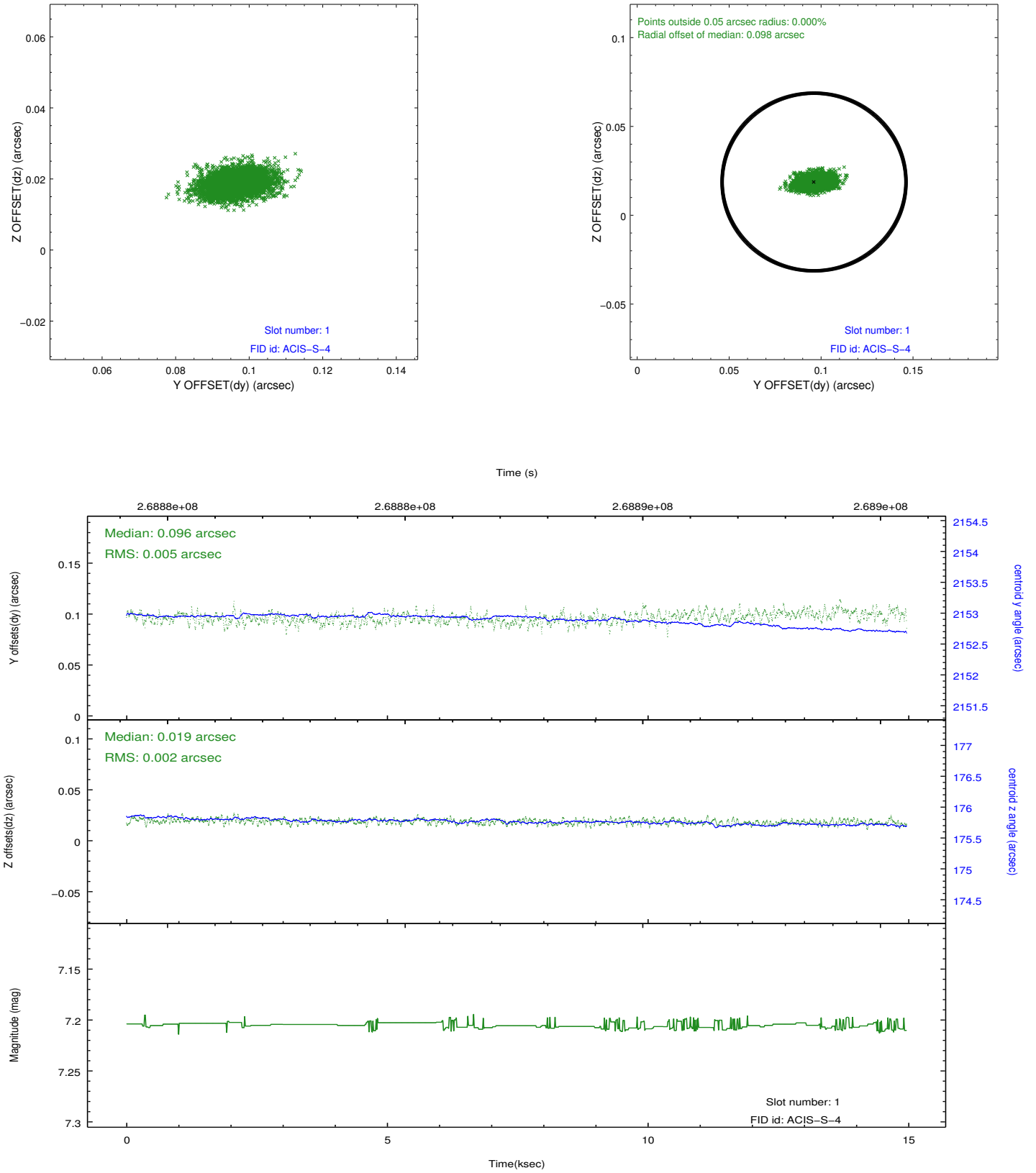


## 2.5 FID Slots

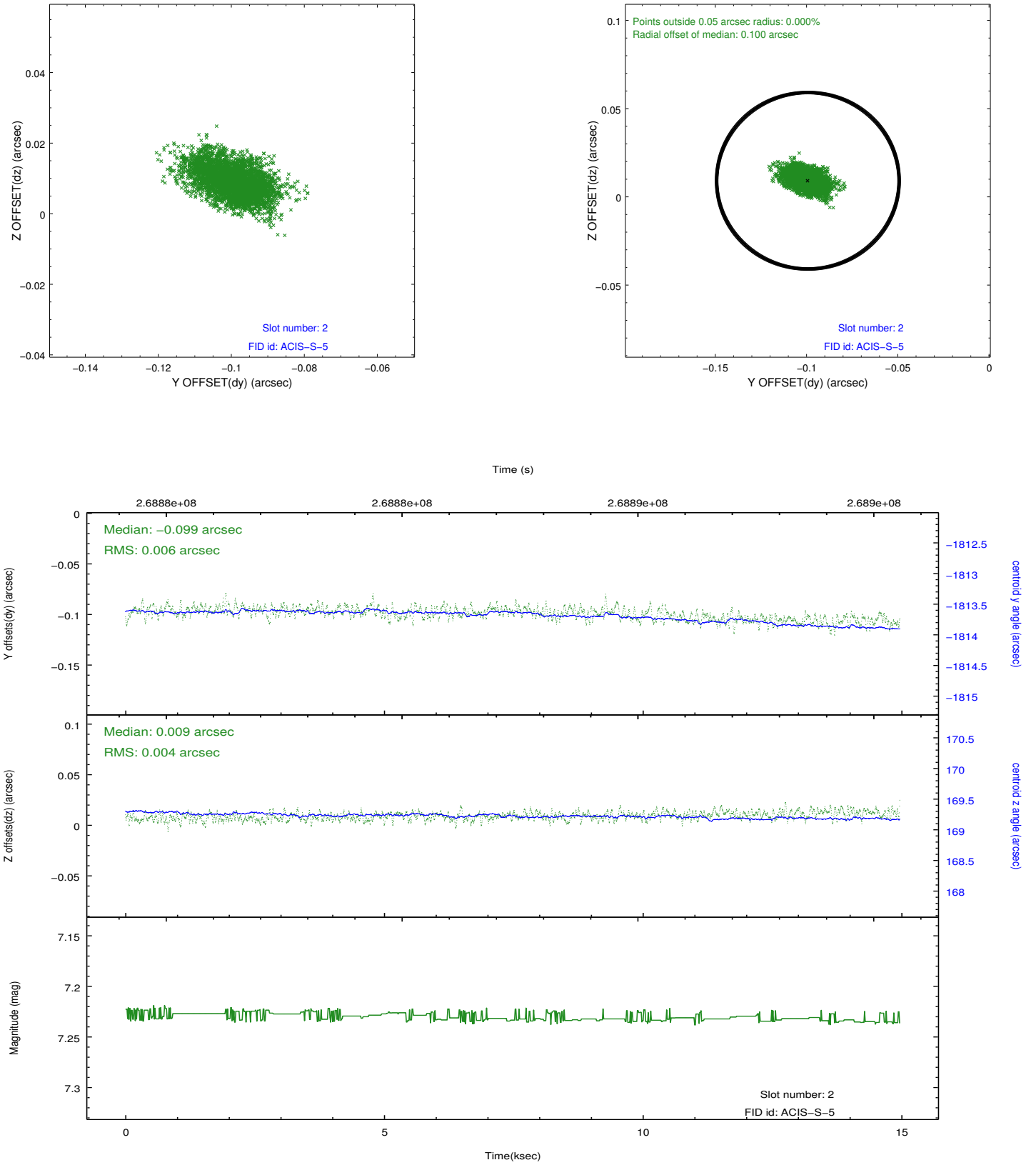
### 2.5.1 Slot 0



## 2.5.2 Slot 1



### 2.5.3 Slot 2



## **A Summary**

### **A.1 Status**

V&V Scientist	Jen Lauer
V&V Date (YYYY-MM-DD)	2012.04.05
V&V Edition	1
V&V Disposition and Status	OK
V&V Charge Time	14.9683991

### **A.2 Comments**