

# V&V Reference Report

## L2 ASCDS Version : 8.4.5

Observation 62046 - L2 Version 5  
Chandra X-Ray Center

L2 Processing Date : Aug 28 2012

## Contents

<b>1</b>	<b>Front</b>	<b>2</b>
<b>2</b>	<b>OBI</b>	<b>3</b>
2.1	OBI . . . . .	3
2.1.1	Images . . . . .	3
2.1.2	Bias . . . . .	3
2.1.3	Parameters . . . . .	4
2.1.4	Events . . . . .	4
2.2	Compared Parameters . . . . .	5
2.3	Star Slots . . . . .	6
2.4	FID Slots . . . . .	6
<b>A</b>	<b>Summary</b>	<b>7</b>
A.1	Status . . . . .	7
A.2	Comments . . . . .	7

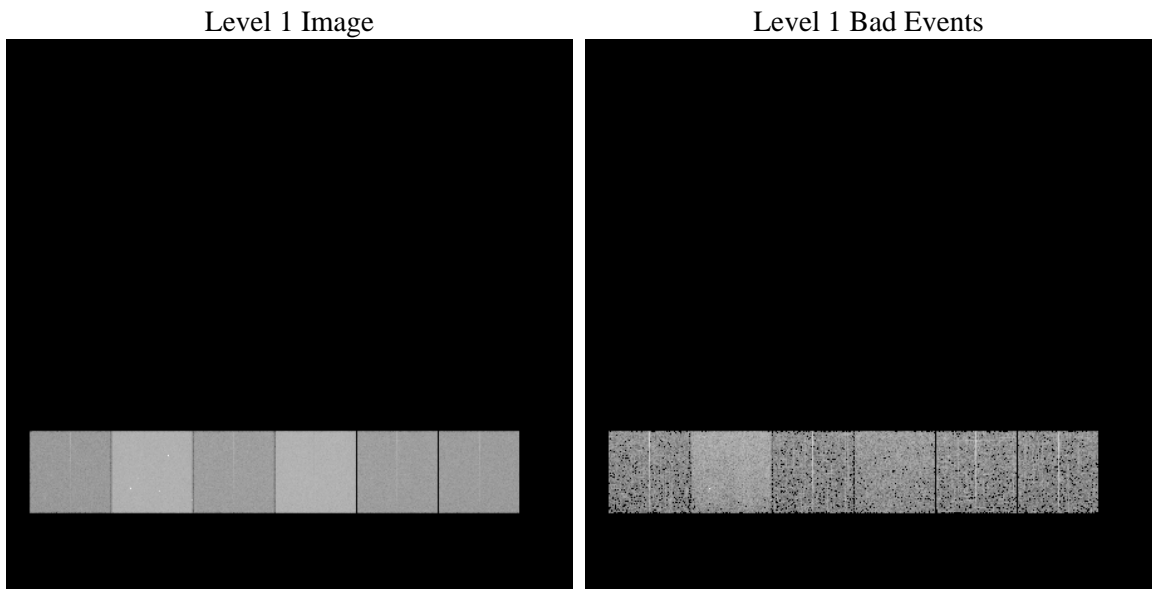
# 1 Front

seq_num	&#160	Sequence number
obs_id	62046	Observation id
title	ACIS-456789 diagnostics	Proposal title
observer	CHANDRA engineering request/realtime commanding	Principal investig
object	&#160	Source name
dtcycle	0	&#160
cycle	P	events from which exps? Prim/Second/Both
ra_targ	0.0	Observer's specified target RA [deg]
dec_targ	0.0	Observer's specified target Dec [deg]
ra_nom	244.2884899428	Nominal RA [deg]
dec_nom	-9.9921526350303	Nominal Dec [deg]
roll_nom	172.71730774024	Nominal Roll [deg]
revision	5	Processing version of data
ontime	4046.3821435124	Sum of GTIs [s]
livetime	3995.1444163724	Livetime [s]
ontime4	1698.2747365981	Sum of GTIs [s]
ontime5	4336.3820649832	Sum of GTIs [s]
ontime6	1881.3789022714	Sum of GTIs [s]
ontime7	4046.3821435124	Sum of GTIs [s]
ontime8	1853.8734198362	Sum of GTIs [s]
ontime9	1811.5469264537	Sum of GTIs [s]
l2events	1240714	Number of level 2 events

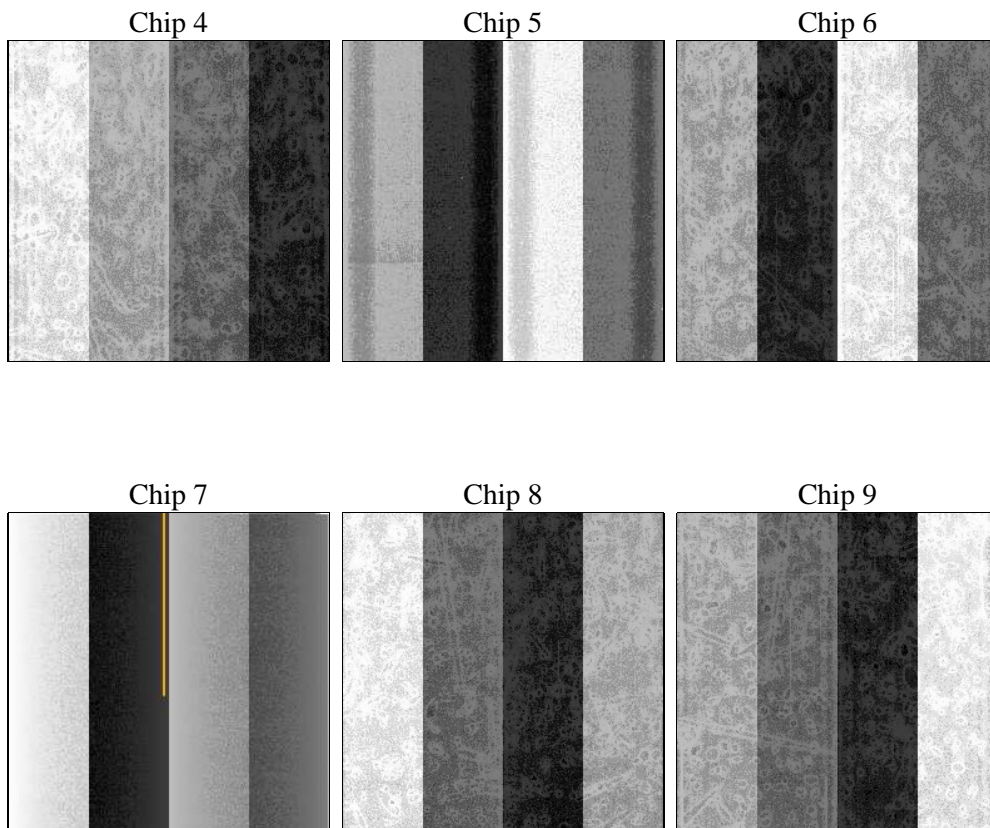
## 2 OBI

### 2.1 OBI

#### 2.1.1 Images



#### 2.1.2 Bias



### 2.1.3 Parameters

obi_num	0	Obi number	sched_exp_time	0.0	[s] Scheduled observation exposure time
ascdsver	8.4.5	Processing system revision	ontime	4046.3821435124	Sum of GTIs [s]
caldbver	4.5.1.1	&#160	ontime4	1698.2747365981	Sum of GTIs [s]
date	2012-08-28T07:27:00	Date and time of file creation	ontime5	4336.3820649832	Sum of GTIs [s]
revision	5	Processing version of data	ontime6	1881.3789022714	Sum of GTIs [s]
			ontime7	4046.3821435124	Sum of GTIs [s]
			ontime8	1853.8734198362	Sum of GTIs [s]
			ontime9	1811.5469264537	Sum of GTIs [s]
			l1events	1411385	Number of level 1 events

### 2.1.4 Events

	ccd 4	ccd 5	ccd 6	ccd 7	ccd 8	ccd 9		ccd 4	ccd 5	ccd 6	ccd 7	ccd 8	ccd 9
level 1 events	154081	357584	182281	368211	180911	168317	grade 0 events	78440	88488	90676	89951	89900	83592
rejected events	15830	30467	16053	20077	17839	15635		50%	24%	49%	24%	49%	49%
rejected %	10%	8%	8%	5%	9%	9%	grade 1 events	469	453	495	263	537	467
								0%	0%	0%	0%	0%	0%
							grade 2 events	24239	109735	28699	77096	28653	26953
								15%	30%	15%	20%	15%	16%
							grade 3 events	8545	23149	10235	35708	10358	9456
								5%	6%	5%	9%	5%	5%
							grade 4 events	8429	22834	10320	35520	10227	9395
								5%	6%	5%	9%	5%	5%
							grade 5 events	1099	6500	1245	4666	1382	1300
								0%	1%	0%	1%	0%	0%
							grade 6 events	18598	82911	26298	109859	23934	23286
								12%	23%	14%	29%	13%	13%
							grade 7 events	14262	23514	14313	15148	15920	13868
								9%	6%	7%	4%	8%	8%

## 2.2 Compared Parameters

Parameter	Planned	Actual
Instrument	ACIS	ACIS
Detector	ACIS-456789	ACIS-456789
Grating	NONE	NONE
Data mode	FAINT	FAINT
Observation mode	SECONDARY	SECONDARY
[deg] Pointing RA	0	244.2884899428039
[deg] Pointing Dec	0	-9.992152635030264
[deg] Pointing Roll	0.0	172.7173077402368
[mm] SIM focus pos	-0.684267	-0.6828225247311905
[mm] SIM defocus	0	0.8505141146731063
[mm] SIM translation stage pos	-190.132523	250.466033080201
[mm] SIM translation stage offset	0	-0.01005468664627074
[s] Observation start time (MET)	75607802.490751	75607801.722295
Observation start date	2000-05-25T02:10:02	2000-05-25T02:10:01
[s] Observation end time (MET)	75656574.042542	75656573.274086
Observation end date	2000-05-25T15:42:54	2000-05-25T15:42:53
Read mode	TIMED	TIMED

Parameter	Planned	Actual
Obspar format version number	7	7
Obspar file type	PREDICTED	ACTUAL
Obspar update status	NONE	UPDATED
On-chip summing requested	N	N
Subarray requested	NONE	NONE
Alternating exposures requested	N	N
[s] Primary exposure time	3.2	3.2

## **2.3 Star Slots**

## **2.4 FID Slots**

## A Summary

### A.1 Status

V&V Scientist	Jen Lauer
V&V Date (YYYY-MM-DD)	2012.08.30
V&V Edition	1
V&V Disposition and Status	OK
V&V Charge Time	4.0463821435124

### A.2 Comments