

V&V Reference Report

L2 ASCDS Version : 7.6.10

Observation 62016 - L2 Version 001
Chandra X-Ray Center

L2 Processing Date : May 27 2007

Contents

1	Front	2
2	OBI	3
2.1	OBI	3
2.1.1	Images	3
2.1.2	Bias	3
2.1.3	Parameters	4
2.1.4	Events	4
2.2	Compared Parameters	5
2.3	Star Slots	6
2.4	FID Slots	6
A	Summary	7
A.1	Status	7
A.2	Comments	7

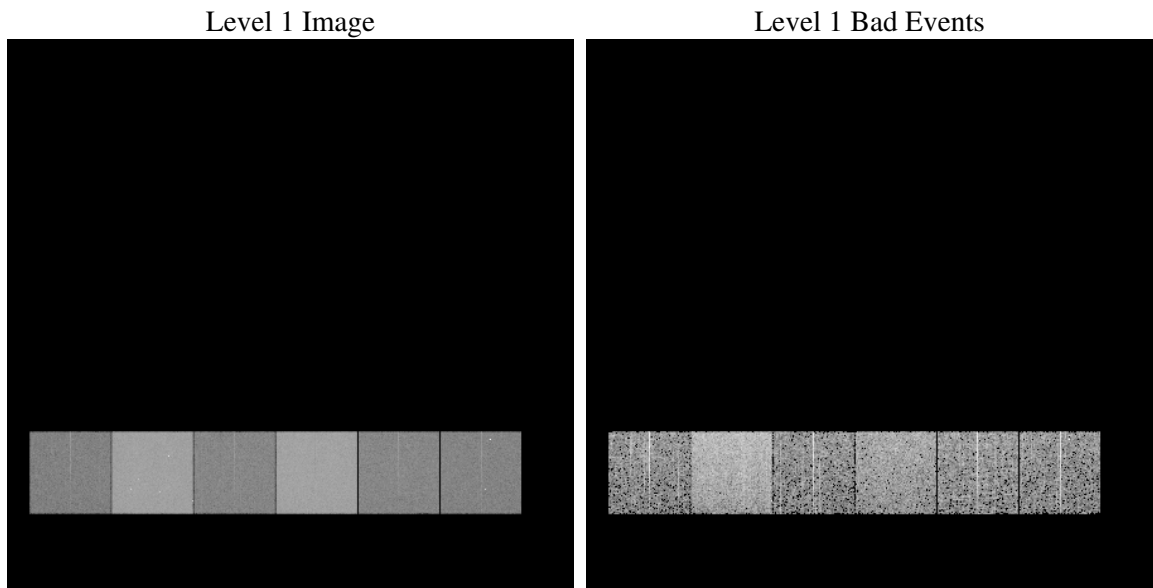
1 Front

seq_num	
obs_id	62016
title	ACIS-456789 diagnostics
observer	CHANDRA engineering request/realtime commanding
object	
dtcycle	0
cycle	P
ra_targ	0.0
dec_targ	0.0
ra_nom	322.32908285976
dec_nom	62.265076251414
roll_nom	137.47265548653
revision	4
ontime	4286.6886706352
livetime	4232.4080375536
ontime4	1758.8154923171
ontime5	4607.5854416043
ontime6	1914.3444018215
ontime7	4286.6886706352
ontime8	1930.631681785
ontime9	1849.4004520774
l2events	1258884

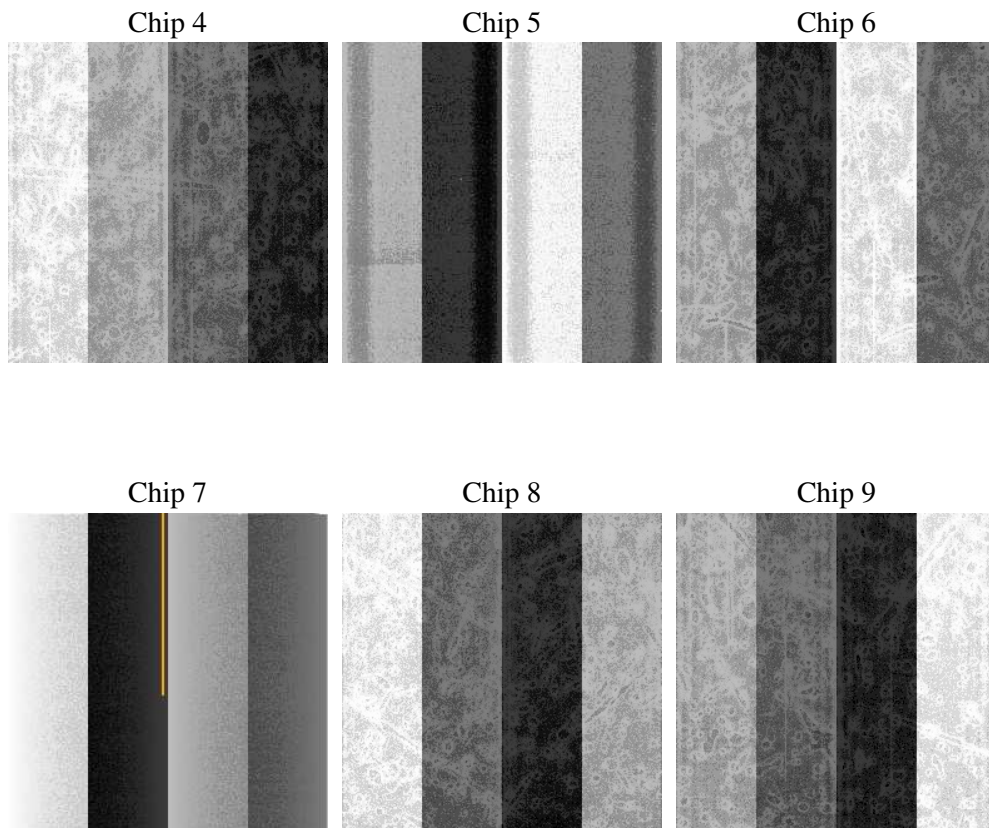
2 OBI

2.1 OBI

2.1.1 Images



2.1.2 Bias



2.1.3 Parameters

obi_num	0
ascdsver	7.6.10
caldsver	3.4.0
date	2007-05-27T22:13:18
revision	4

sched_exp_time	0.0
ontime	4286.6886706352
ontime4	1758.8154923171
ontime5	4607.5854416043
ontime6	1914.3444018215
ontime7	4286.6886706352
ontime8	1930.631681785
ontime9	1849.4004520774
l1events	1435196

2.1.4 Events

	ccd 4	ccd 5	ccd 6	ccd 7	ccd 8	ccd 9
level 1 events	154872	370412	179001	381874	181201	167836
rejected events	16395	32419	16018	22003	18473	16232
rejected %	10%	8%	8%	5%	10%	9%

	ccd 4	ccd 5	ccd 6	ccd 7	ccd 8	ccd 9
grade 0 events	78315	91409	89020	93320	89940	83766
	50%	24%	49%	24%	49%	49%
grade 1 events	420	332	474	238	500	508
	0%	0%	0%	0%	0%	0%
grade 2 events	24414	113168	28517	80091	28756	26509
	15%	30%	15%	20%	15%	15%
grade 3 events	8399	24210	10106	36947	10088	9320
	5%	6%	5%	9%	5%	5%
grade 4 events	8570	23586	9970	36986	10212	9311
	5%	6%	5%	9%	5%	5%
grade 5 events	1155	6977	1356	4941	1441	1259
	0%	1%	0%	1%	0%	0%
grade 6 events	18779	85620	25370	112527	23732	22698
	12%	23%	14%	29%	13%	13%
grade 7 events	14820	25110	14188	16824	16532	14465
	9%	6%	7%	4%	9%	8%

2.2 Compared Parameters

Parameter	Planned	Actual	Parameter	Planned	Actual
Instrument	ACIS	ACIS	Obspar format version number	6	6
Detector	ACIS-456789	ACIS-456789	Obspar file type	PREDICTED	ACTUAL
Grating	NONE	NONE	Obspar update status	NONE	UPDATED
Data mode	FAINT	FAINT	On-chip summing requested	N	N
Observation mode	SECONDARY	SECONDARY	Subarray requested	NONE	NONE
Pointing RA	0	322.3290828597597	Alternating exposures requested	N	N
Pointing Dec	0	62.26507625141365	Primary exposure time	0.000000	3.2
Pointing Roll	0.0	137.4726554865285			
SIM focus pos (mm)	-0.684267	-0.6828225247311905			
SIM defocus (mm)	0	0.8505141146731063			
SIM translation stage pos (mm)	-190.132523	250.466033080201			
SIM translation stage offset (mm)	0	-0.01005468664627074			
Observation start time	78349277.84199999	78349277.073249			
Observation start date	2000-06-25T19:41:18	2000-06-25T19:41:17			
Observation end time	78396798.89300001	78396798.125001			
Observation end date	2000-06-26T08:53:19	2000-06-26T08:53:18			
Read mode	TIMED	TIMED			

2.3 Star Slots

2.4 FID Slots

A Summary

A.1 Status

V&V Scientist	Jen Lauer
V&V Date (YYYY-MM-DD)	2007.05.29
V&V Edition	1
V&V Disposition and Status	OK
V&V Charge Time	4.28668867

A.2 Comments