

V&V Reference Report

L2 ASCDS Version : 7.6.10

Observation 61856 - L2 Version 001
Chandra X-Ray Center

L2 Processing Date : Jun 16 2007

Contents

1	Front	2
2	OBI	3
2.1	OBI	3
2.1.1	Images	3
2.1.2	Bias	3
2.1.3	Parameters	4
2.1.4	Events	4
2.2	Compared Parameters	5
2.3	Star Slots	6
2.4	FID Slots	6
A	Summary	7
A.1	Status	7
A.2	Comments	7

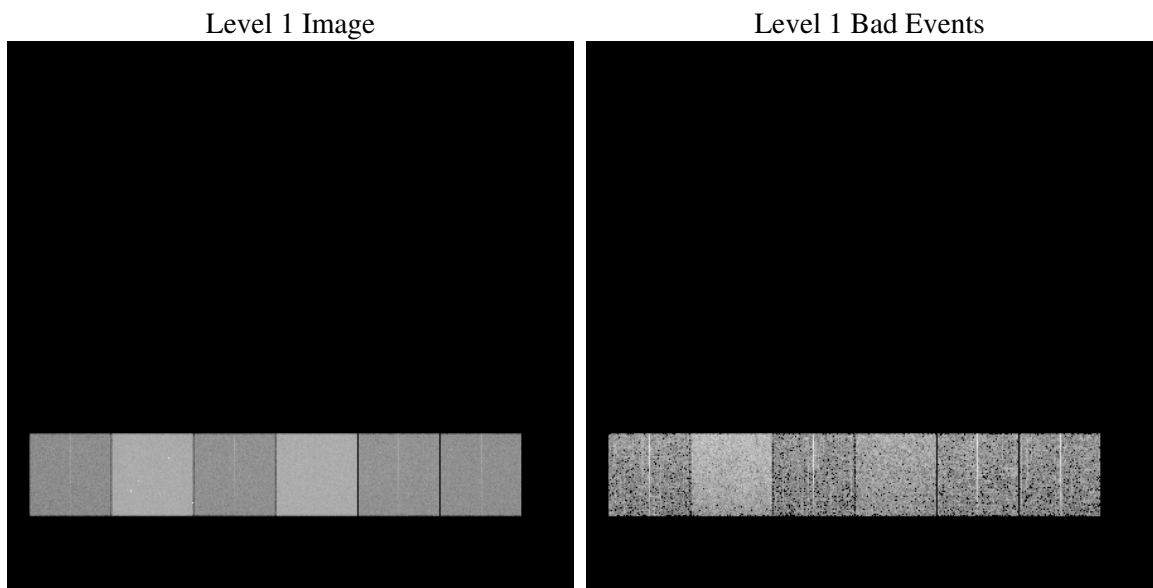
1 Front

seq_num	
obs_id	61856
title	ACIS-456789 diagnostics
observer	CHANDRA engineering request/realtime commanding
object	
dtcycle	0
cycle	P
ra_targ	0.0
dec_targ	0.0
ra_nom	356.39436001697
dec_nom	-59.497991920362
roll_nom	311.46382201719
revision	3
ontime	4588.04851228
livetime	4529.9518794264
ontime4	1930.5399436951
ontime5	4915.4256789386
ontime6	2060.1403936744
ontime7	4588.04851228
ontime8	2128.2839345932
ontime9	2047.0528943837
l2events	1251291

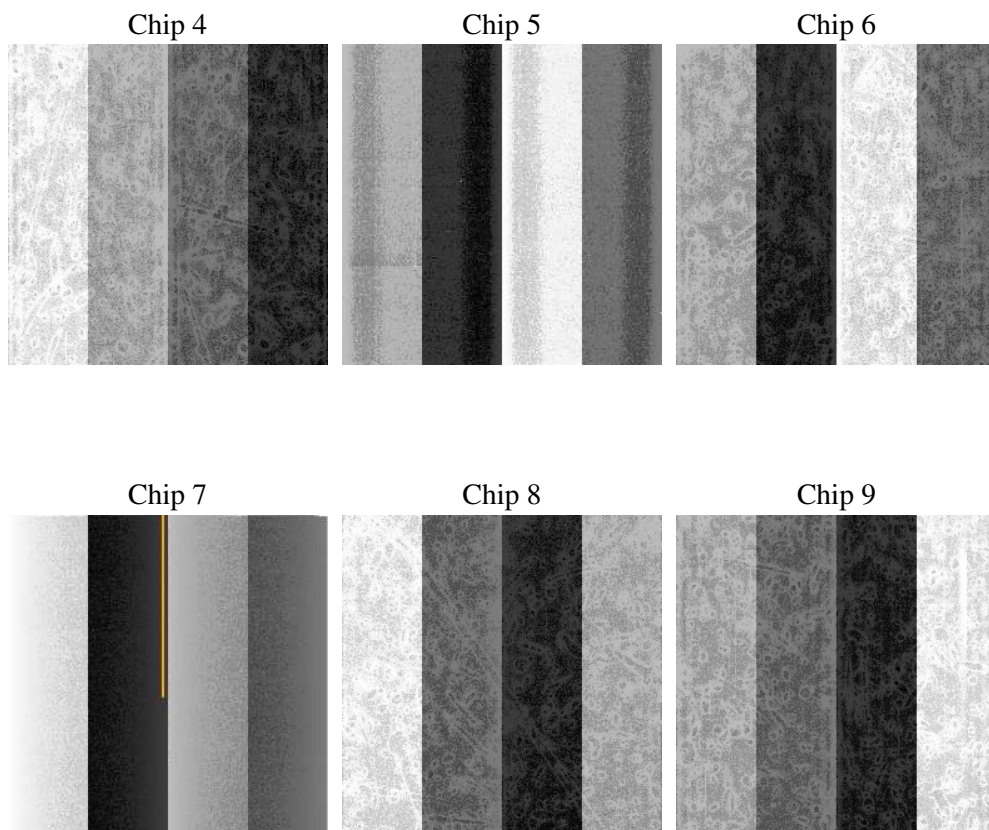
2 OBI

2.1 OBI

2.1.1 Images



2.1.2 Bias



2.1.3 Parameters

obi_num	1
ascdsver	7.6.10
caldbver	3.4.0
date	2007-06-16T23:57:10
revision	3

sched_exp_time	0.0
ontime	4588.04851228
ontime4	1930.5399436951
ontime5	4915.4256789386
ontime6	2060.1403936744
ontime7	4588.04851228
ontime8	2128.2839345932
ontime9	2047.0528943837
l1events	1431756

2.1.4 Events

	ccd 4	ccd 5	ccd 6	ccd 7	ccd 8	ccd 9
level 1 events	157669	364439	178209	375198	185327	170914
rejected events	17638	34227	16645	22835	18227	16481
rejected %	11%	9%	9%	6%	9%	9%

	ccd 4	ccd 5	ccd 6	ccd 7	ccd 8	ccd 9
grade 0 events	79406	88003	88432	91360	92215	84740
	50%	24%	49%	24%	49%	49%
grade 1 events	461	291	440	241	436	432
	0%	0%	0%	0%	0%	0%
grade 2 events	24927	111425	27957	78167	29442	27117
	15%	30%	15%	20%	15%	15%
grade 3 events	8616	22885	9914	36381	10604	9469
	5%	6%	5%	9%	5%	5%
grade 4 events	8610	22805	9984	35642	10428	9658
	5%	6%	5%	9%	5%	5%
grade 5 events	1210	6953	1381	5112	1509	1314
	0%	1%	0%	1%	0%	0%
grade 6 events	18939	85216	25277	110813	24411	23449
	12%	23%	14%	29%	13%	13%
grade 7 events	15500	26861	14824	17482	16282	14735
	9%	7%	8%	4%	8%	8%

2.2 Compared Parameters

Parameter	Planned	Actual	Parameter	Planned	Actual
Instrument	ACIS	ACIS	Obspar format version number	6	6
Detector	ACIS-456789	ACIS-456789	Obspar file type	PREDICTED	ACTUAL
Grating	NONE	NONE	Obspar update status	NONE	UPDATED
Data mode	FAINT	FAINT	On-chip summing requested	N	N
Observation mode	SECONDARY	SECONDARY	Subarray requested	NONE	NONE
Pointing RA	0	356.3943600169741	Alternating exposures requested	N	N
Pointing Dec	0	-59.49799192036232	Primary exposure time	3.2	3.2
Pointing Roll	0.0	311.4638220171943			
SIM focus pos (mm)	-0.684267	-0.6828225247311905			
SIM defocus (mm)	0	0.8505141146731063			
SIM translation stage pos (mm)	-190.132523	250.466033080201			
SIM translation stage offset (mm)	0	-0.01005468664627074			
Observation start time	90459122.34529001	90459121.576905			
Observation start date	2000-11-12T23:32:02	2000-11-12T23:32:01			
Observation end time	90503211.696955	90503210.92858499			
Observation end date	2000-11-13T11:46:52	2000-11-13T11:46:50			
Read mode	TIMED	TIMED			

2.3 Star Slots

2.4 FID Slots

A Summary

A.1 Status

V&V Scientist	Jen Lauer
V&V Date (YYYY-MM-DD)	2007.06.18
V&V Edition	1
V&V Disposition and Status	OK
V&V Charge Time	4.58804851

A.2 Comments