

# V&V Reference Report

## L2 ASCDS Version : 7.6.9

Observation 61766 - L2 Version 001  
Chandra X-Ray Center

L2 Processing Date : Nov 4 2006

## Contents

<b>1</b>	<b>Front</b>	<b>2</b>
<b>2</b>	<b>OBI</b>	<b>3</b>
2.1	OBI . . . . .	3
2.1.1	Images . . . . .	3
2.1.2	Bias . . . . .	3
2.1.3	Parameters . . . . .	4
2.1.4	Events . . . . .	4
2.2	Compared Parameters . . . . .	5
2.3	Aspect . . . . .	6
2.4	Star Slots . . . . .	8
2.5	FID Slots . . . . .	8
<b>A</b>	<b>Summary</b>	<b>9</b>
A.1	Status . . . . .	9
A.2	Comments . . . . .	9

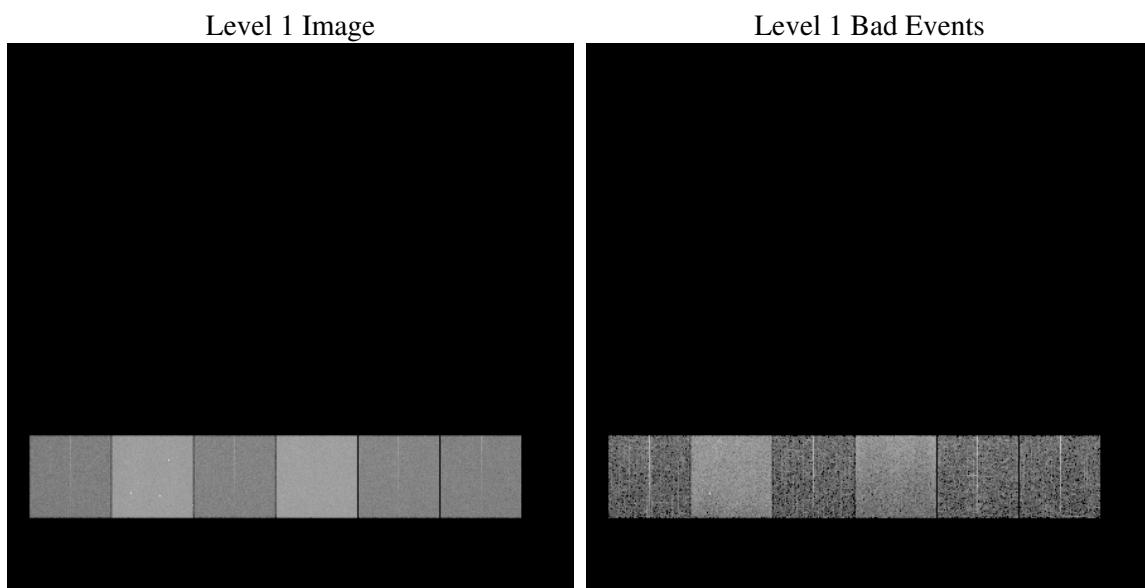
# 1 Front

seq_num	&#160
obs_id	61766
title	ACIS-456789 diagnostics
observer	CHANDRA engineering request/realtime commanding
object	&#160
dtcycle	0
cycle	P
ra_targ	0.0
dec_targ	0.0
ra_nom	353.93240824245
dec_nom	32.391395911147
roll_nom	309.9828121066
revision	3
ontime	5259.1407629251
livetime	5192.5463559106
ontime4	2187.6071897596
ontime5	5658.6377060264
ontime6	2330.1717897058
ontime7	5259.1407629251
ontime8	2417.7616703063
ontime9	2290.3802534789
l2events	1310763

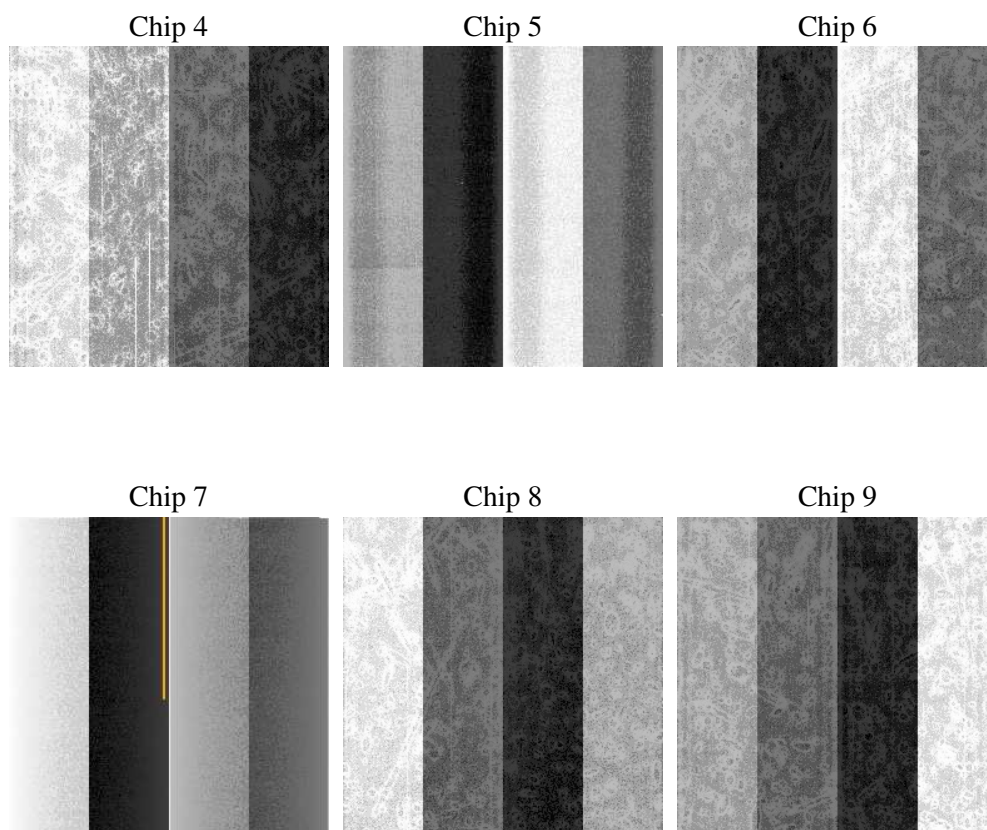
## 2 OBI

### 2.1 OBI

#### 2.1.1 Images



#### 2.1.2 Bias



### 2.1.3 Parameters

obi_num	1
ascdsver	7.6.9
caldsver	3.2.3
date	2006-11-04T08:08:19
revision	3

sched_exp_time	0.0
ontime	5315.2710804343
ontime4	2210.3873897791
ontime5	5720.3920072913
ontime6	2349.7519897372
ontime7	5315.2710804343
ontime8	2443.7418703139
ontime9	2314.1005000025
l1events	1550767

### 2.1.4 Events

	ccd 4	ccd 5	ccd 6	ccd 7	ccd 8	ccd 9
level 1 events	168766	398934	191749	410784	198138	182396
rejected events	20477	54568	20252	41971	22092	20123
rejected %	12%	13%	10%	10%	11%	11%

	ccd 4	ccd 5	ccd 6	ccd 7	ccd 8	ccd 9
grade 0 events	85077	45088	94592	71631	98211	89863
	50%	11%	49%	17%	49%	49%
grade 1 events	463	139	508	179	491	461
	0%	0%	0%	0%	0%	0%
grade 2 events	26376	166994	30120	110159	31223	29157
	15%	41%	15%	26%	15%	15%
grade 3 events	9163	11962	10586	29007	11326	10211
	5%	2%	5%	7%	5%	5%
grade 4 events	9189	11776	10562	28688	11279	10175
	5%	2%	5%	6%	5%	5%
grade 5 events	1287	6408	1479	5787	1633	1451
	0%	1%	0%	1%	0%	0%
grade 6 events	20084	112378	27024	133218	25872	24443
	11%	28%	14%	32%	13%	13%
grade 7 events	17127	44189	16878	32115	18103	16635
	10%	11%	8%	7%	9%	9%

## 2.2 Compared Parameters

Parameter	Planned	Actual	Parameter	Planned	Actual
Instrument	ACIS	ACIS	Obspar format version number	6	6
Detector	ACIS-456789	ACIS-456789	Obspar file type	PREDICTED	ACTUAL
Grating	NONE	NONE	Obspar update status	NONE	UPDATED
Data mode	FAINT	FAINT	On-chip summing requested	N	N
Observation mode	SECONDARY	SECONDARY	Subarray requested	NONE	NONE
Pointing RA	0	353.9324082424503	Alternating exposures requested	N	N
Pointing Dec	0	32.39139591114716	Primary exposure time	0.000000	3.2
Pointing Roll	0.0	309.9828121065977			
SIM focus pos (mm)	-0.684267	-0.6828225247311905			
SIM defocus (mm)	0	0.8505141146731063			
SIM translation stage pos (mm)	-190.132523	250.466033080201			
SIM translation stage offset (mm)	0	-0.01005468664627074			
Observation start time	96432984.524	96432983.75549001			
Observation start date	2001-01-21T02:56:25	2001-01-21T02:56:23			
Observation end time	96454769.875	96454769.106327			
Observation end date	2001-01-21T08:59:30	2001-01-21T08:59:29			
Read mode	TIMED	TIMED			

## 2.3 Aspect



## **2.4 Star Slots**

## **2.5 FID Slots**



## A Summary

### A.1 Status

V&V Scientist	Jen Lauer
V&V Date (YYYY-MM-DD)	2006.11.06
V&V Edition	1
V&V Disposition and Status	OK
V&V Charge Time	5.25914076

### A.2 Comments