

V&V Reference Report

L2 ASCDS Version : 8.4.5

Observation 61756 - L2 Version 4
Chandra X-Ray Center

L2 Processing Date : Sep 7 2012

Contents

1	Front	2
2	OBI	3
2.1	OBI	3
2.1.1	Images	3
2.1.2	Bias	3
2.1.3	Parameters	4
2.1.4	Events	4
2.2	Compared Parameters	5
2.3	Star Slots	6
2.4	FID Slots	6
A	Summary	7
A.1	Status	7
A.2	Comments	7

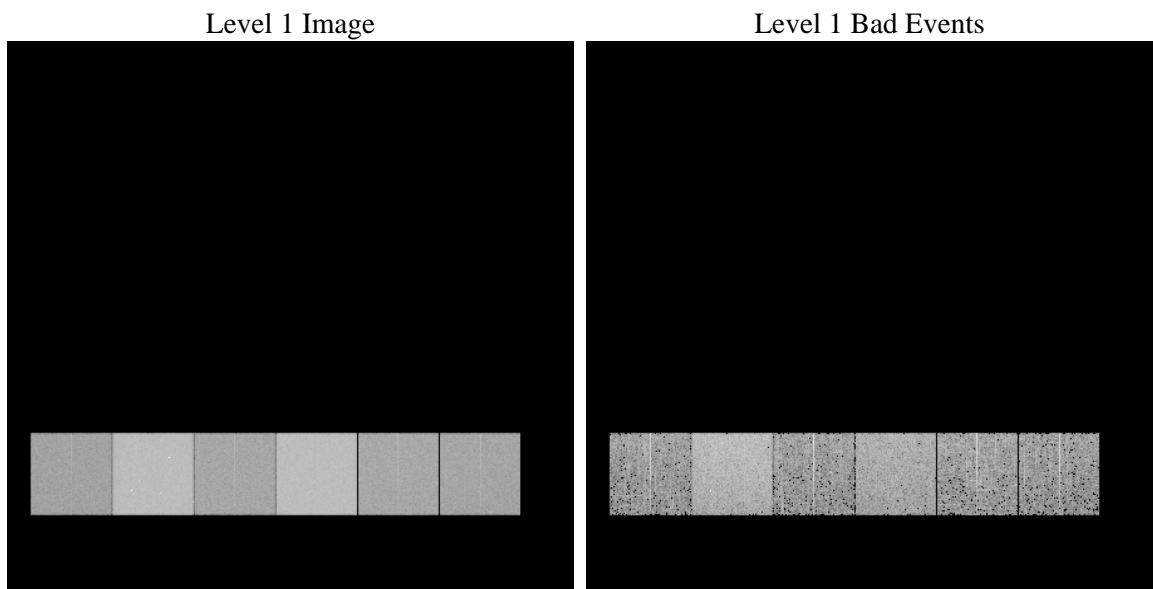
1 Front

seq_num	 	Sequence number
obs_id	61756	Observation id
title	ACIS-456789 diagnostics	Proposal title
observer	CHANDRA engineering request/realtime commanding	Principal investig
object	 	Source name
dtcycle	0	
cycle	P	events from which exps? Prim/Second/Both
ra_targ	0.0	Observer's specified target RA [deg]
dec_targ	0.0	Observer's specified target Dec [deg]
ra_nom	353.93320653593	Nominal RA [deg]
dec_nom	32.393827453048	Nominal Dec [deg]
roll_nom	314.95361635139	Nominal Roll [deg]
revision	4	Processing version of data
ontime	5362.5662958622	Sum of GTIs [s]
livetime	5294.6622524742	Livetime [s]
ontime4	2144.2476124763	Sum of GTIs [s]
ontime5	5751.4816039503	Sum of GTIs [s]
ontime6	2306.5649110675	Sum of GTIs [s]
ontime7	5362.5662958622	Sum of GTIs [s]
ontime8	2403.5306023657	Sum of GTIs [s]
ontime9	2286.995431453	Sum of GTIs [s]
l2events	1332930	Number of level 2 events

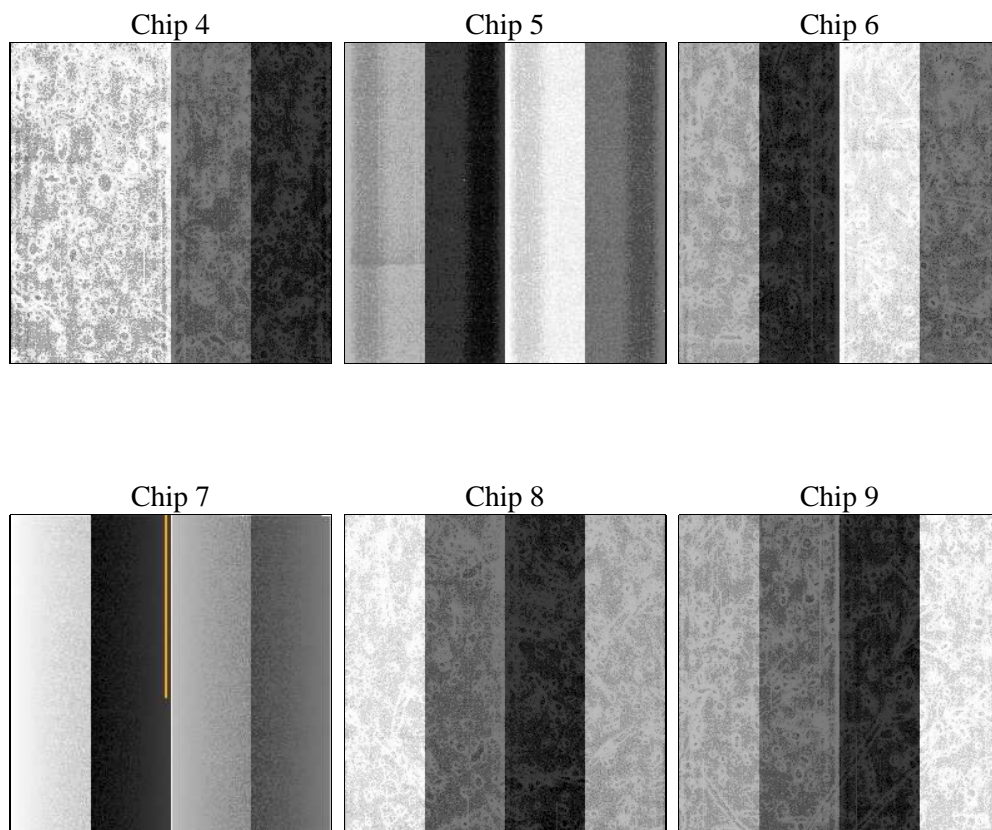
2 OBI

2.1 OBI

2.1.1 Images



2.1.2 Bias



2.1.3 Parameters

obi_num	0	Obi number	sched_exp_time	0.0	[s] Scheduled observation exposure time
ascdsver	8.4.5	Processing system revision	ontime	5362.5662958622	Sum of GTIs [s]
caldsver	4.5.1.1	 	ontime4	2144.2476124763	Sum of GTIs [s]
date	2012-09-07T12:09:43	Date and time of file creation	ontime5	5751.4816039503	Sum of GTIs [s]
revision	4	Processing version of data	ontime6	2306.5649110675	Sum of GTIs [s]
			ontime7	5362.5662958622	Sum of GTIs [s]
			ontime8	2403.5306023657	Sum of GTIs [s]
			ontime9	2286.995431453	Sum of GTIs [s]
			l1events	1549605	Number of level 1 events

2.1.4 Events

	ccd 4	ccd 5	ccd 6	ccd 7	ccd 8	ccd 9		ccd 4	ccd 5	ccd 6	ccd 7	ccd 8	ccd 9
level 1 events	164879	402207	188873	414495	199105	180046	grade 0 events	82674	89573	92635	99441	98107	88823
rejected events	20141	44058	20540	29847	22585	19300		50%	22%	49%	23%	49%	49%
rejected %	12%	10%	10%	7%	11%	10%	grade 1 events	471	267	474	290	480	490
								0%	0%	0%	0%	0%	0%
							grade 2 events	25596	128214	29303	86357	31492	28687
								15%	31%	15%	20%	15%	15%
							grade 3 events	9014	23412	10406	39302	11128	9934
								5%	5%	5%	9%	5%	5%
							grade 4 events	8937	23445	10404	38928	11049	10031
								5%	5%	5%	9%	5%	5%
							grade 5 events	1270	8370	1431	6042	1635	1464
								0%	2%	0%	1%	0%	0%
							grade 6 events	19617	96266	27121	123350	25888	24159
								11%	23%	14%	29%	13%	13%
							grade 7 events	17300	32660	17099	20785	19326	16458
								10%	8%	9%	5%	9%	9%

2.2 Compared Parameters

Parameter	Planned	Actual	Parameter	Planned	Actual
Instrument	ACIS	ACIS	Obspar format version number	7	7
Detector	ACIS-456789	ACIS-456789	Obspar file type	PREDICTED	ACTUAL
Grating	NONE	NONE	Obspar update status	NONE	UPDATED
Data mode	FAINT	FAINT	On-chip summing requested	N	N
Observation mode	SECONDARY	SECONDARY	Subarray requested	NONE	NONE
[deg] Pointing RA	0	353.9332065359339	Alternating exposures requested	N	N
[deg] Pointing Dec	0	32.3938274530476	[s] Primary exposure time	3.2	3.2
[deg] Pointing Roll	0.0	314.9536163513851			
[mm] SIM focus pos	-0.684267	-0.6828225247311905			
[mm] SIM defocus	0	0.8505141146731063			
[mm] SIM translation stage pos	-190.132523	250.466033080201			
[mm] SIM translation stage offset	0	-0.01005468664627074			
[s] Observation start time (MET)	97119053.95033699	97119053.18188199			
Observation start date	2001-01-29T01:30:54	2001-01-29T01:30:53			
[s] Observation end time (MET)	97140845.451176	97140844.682721			
Observation end date	2001-01-29T07:34:05	2001-01-29T07:34:04			
Read mode	TIMED	TIMED			

2.3 Star Slots

2.4 FID Slots

A Summary

A.1 Status

V&V Scientist	Jen Lauer
V&V Date (YYYY-MM-DD)	2012.09.17
V&V Edition	1
V&V Disposition and Status	OK
V&V Charge Time	5.3625662958622

A.2 Comments