

# V&V Reference Report

## L2 ASCDS Version : 8.4.5

Observation 61496 - L2 Version 3  
Chandra X-Ray Center

L2 Processing Date : Sep 22 2012

## Contents

<b>1</b>	<b>Front</b>	<b>2</b>
<b>2</b>	<b>OBI</b>	<b>3</b>
2.1	OBI . . . . .	3
2.1.1	Images . . . . .	3
2.1.2	Bias . . . . .	3
2.1.3	Parameters . . . . .	4
2.1.4	Events . . . . .	4
2.2	Compared Parameters . . . . .	5
2.3	Star Slots . . . . .	6
2.4	FID Slots . . . . .	6
<b>A</b>	<b>Summary</b>	<b>7</b>
A.1	Status . . . . .	7
A.2	Comments . . . . .	7

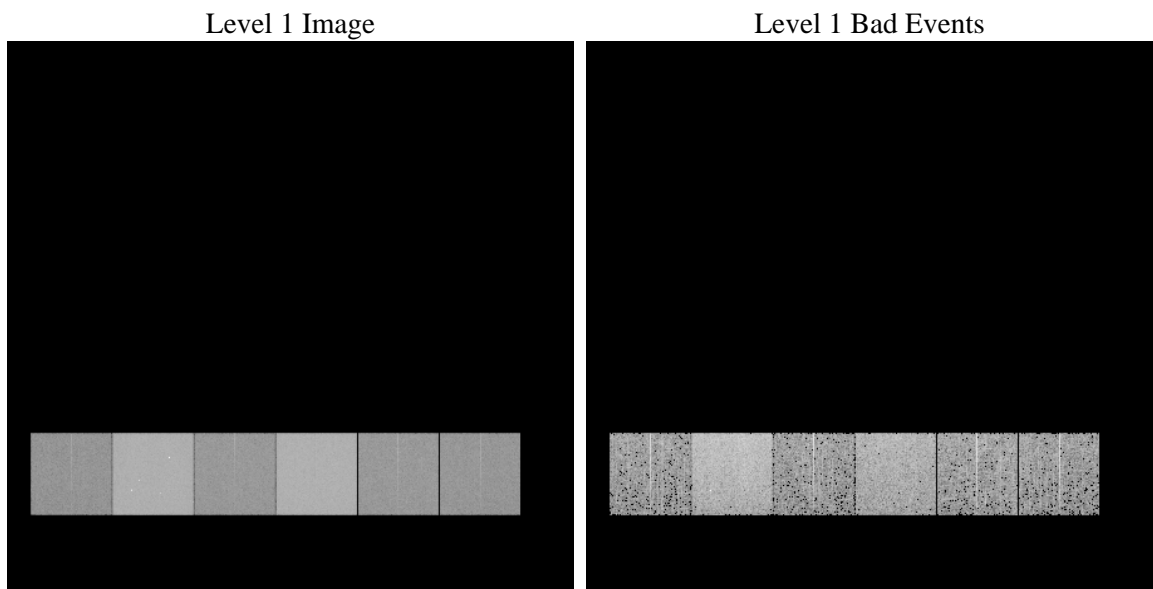
# 1 Front

seq_num	&#160	Sequence number
obs_id	61496	Observation id
title	ACIS-456789 diagnostics	Proposal title
observer	CHANDRA engineering request/realtime commanding	Principal investig
object	&#160	Source name
dtcycle	0	&#160
cycle	P	events from which exps? Prim/Second/Both
ra_targ	0.0	Observer's specified target RA [deg]
dec_targ	0.0	Observer's specified target Dec [deg]
ra_nom	45.569765662671	Nominal RA [deg]
dec_nom	54.465315918273	Nominal Dec [deg]
roll_nom	110.08525446956	Nominal Roll [deg]
revision	3	Processing version of data
ontime	5629.7037191093	Sum of GTIs [s]
livetime	5558.4170208173	Livetime [s]
ontime4	2144.1806995273	Sum of GTIs [s]
ontime5	5995.9317783862	Sum of GTIs [s]
ontime6	2354.8071392924	Sum of GTIs [s]
ontime7	5629.7037191093	Sum of GTIs [s]
ontime8	2353.0590684712	Sum of GTIs [s]
ontime9	2257.452979058	Sum of GTIs [s]
l2events	1220394	Number of level 2 events

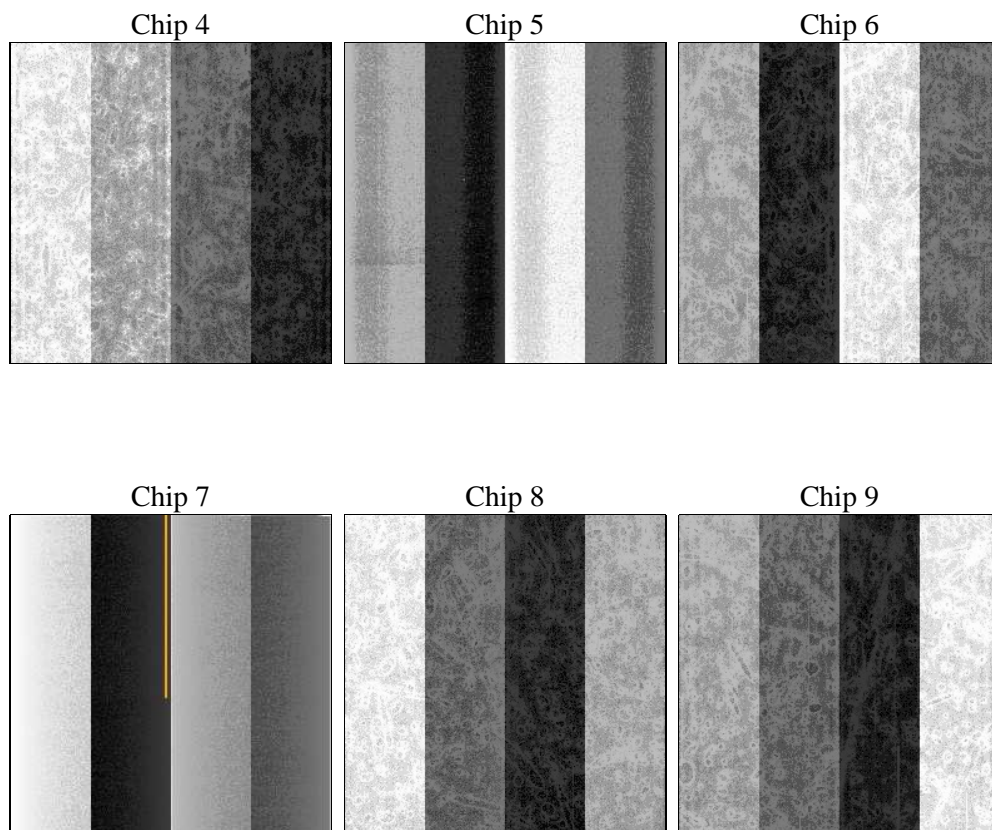
## 2 OBI

### 2.1 OBI

#### 2.1.1 Images



#### 2.1.2 Bias



### 2.1.3 Parameters

obi_num	0	Obi number	sched_exp_time	0.0	[s] Scheduled observation exposure time
ascdsver	8.4.5	Processing system revision	ontime	5629.7037191093	Sum of GTIs [s]
caldsver	4.5.1.1	&#160	ontime4	2144.1806995273	Sum of GTIs [s]
date	2012-09-22T13:16:04	Date and time of file creation	ontime5	5995.9317783862	Sum of GTIs [s]
revision	3	Processing version of data	ontime6	2354.8071392924	Sum of GTIs [s]
			ontime7	5629.7037191093	Sum of GTIs [s]
			ontime8	2353.0590684712	Sum of GTIs [s]
			ontime9	2257.452979058	Sum of GTIs [s]
			l1events	1423197	Number of level 1 events

### 2.1.4 Events

	ccd 4	ccd 5	ccd 6	ccd 7	ccd 8	ccd 9		ccd 4	ccd 5	ccd 6	ccd 7	ccd 8	ccd 9
level 1 events	147186	380900	170973	390488	174585	159065	grade 0 events	72275	88434	83506	92973	84247	76542
rejected events	19083	42231	18528	29444	21281	18269		49%	23%	48%	23%	48%	48%
rejected %	12%	11%	10%	7%	12%	11%	grade 1 events	419	309	445	251	424	447
								0%	0%	0%	0%	0%	0%
							grade 2 events	22608	115494	26303	80157	26831	25038
								15%	30%	15%	20%	15%	15%
							grade 3 events	7737	22897	9226	36916	9722	8709
								5%	6%	5%	9%	5%	5%
							grade 4 events	7856	22607	9313	36290	9501	8772
								5%	5%	5%	9%	5%	5%
							grade 5 events	1185	8131	1377	6152	1509	1385
								0%	2%	0%	1%	0%	0%
							grade 6 events	17627	89425	24097	114905	23246	21735
								11%	23%	14%	29%	13%	13%
							grade 7 events	17479	33603	16706	22844	19105	16437
								11%	8%	9%	5%	10%	10%

## 2.2 Compared Parameters

Parameter	Planned	Actual	Parameter	Planned	Actual
Instrument	ACIS	ACIS	Obspar format version number	7	7
Detector	ACIS-456789	ACIS-456789	Obspar file type	PREDICTED	ACTUAL
Grating	NONE	NONE	Obspar update status	NONE	UPDATED
Data mode	FAINT	FAINT	On-chip summing requested	N	N
Observation mode	SECONDARY	SECONDARY	Subarray requested	NONE	NONE
[deg] Pointing RA	0	45.56976566267087	Alternating exposures requested	N	N
[deg] Pointing Dec	0	54.46531591827269	[s] Primary exposure time	0.000000	3.2
[deg] Pointing Roll	0.0	110.0852544695568			
[mm] SIM focus pos	-0.684267	-0.6828225247311905			
[mm] SIM defocus	0	0.8505141146731063			
[mm] SIM translation stage pos	-190.132523	250.466033080201			
[mm] SIM translation stage offset	0	-0.01005468664627074			
[s] Observation start time (MET)	114904967.392	114904966.62366			
Observation start date	2001-08-22T22:02:47	2001-08-22T22:02:46			
[s] Observation end time (MET)	114941691.094	114941690.32511			
Observation end date	2001-08-23T08:14:51	2001-08-23T08:14:50			
Read mode	TIMED	TIMED			

## 2.3 Star Slots

## 2.4 FID Slots

## A Summary

### A.1 Status

V&V Scientist	Beth Sundheim
V&V Date (YYYY-MM-DD)	2012.09.26
V&V Edition	1
V&V Disposition and Status	OK
V&V Charge Time	5.6297037191093

### A.2 Comments