

V&V Reference Report

L2 ASCDS Version : 7.6.8.1

Observation 61256 - L2 Version 001
Chandra X-Ray Center

L2 Processing Date : Sep 8 2006

Contents

1	Front	2
2	OBI	3
2.1	OBI	3
2.1.1	Images	3
2.1.2	Bias	3
2.1.3	Parameters	4
2.1.4	Events	4
2.2	Compared Parameters	5
2.3	Aspect	6
2.4	Star Slots	8
2.5	FID Slots	8
A	Summary	9
A.1	Status	9
A.2	Comments	9

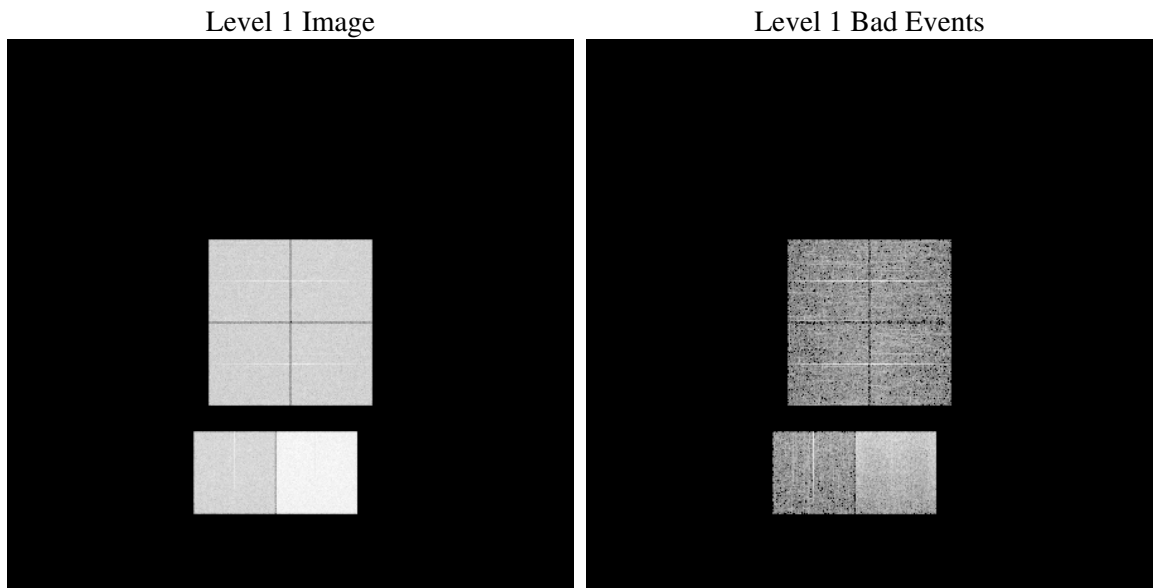
1 Front

seq_num	
obs_id	61256
title	ACIS-012367 diagnostics
observer	CHANDRA engineering request/realtime commanding
object	
dtcycle	0
cycle	P
ra_targ	0.0
dec_targ	0.0
ra_nom	181.97771339199
dec_nom	12.981336205987
roll_nom	187.72669265257
revision	2
ontime	7794.8582627028
livetime	7696.1550738803
ontime0	3238.0760189891
ontime1	3312.660889402
ontime2	3124.7224663496
ontime3	3182.8963687867
ontime6	3429.4191838503
ontime7	7794.8582627028
l2events	1223552

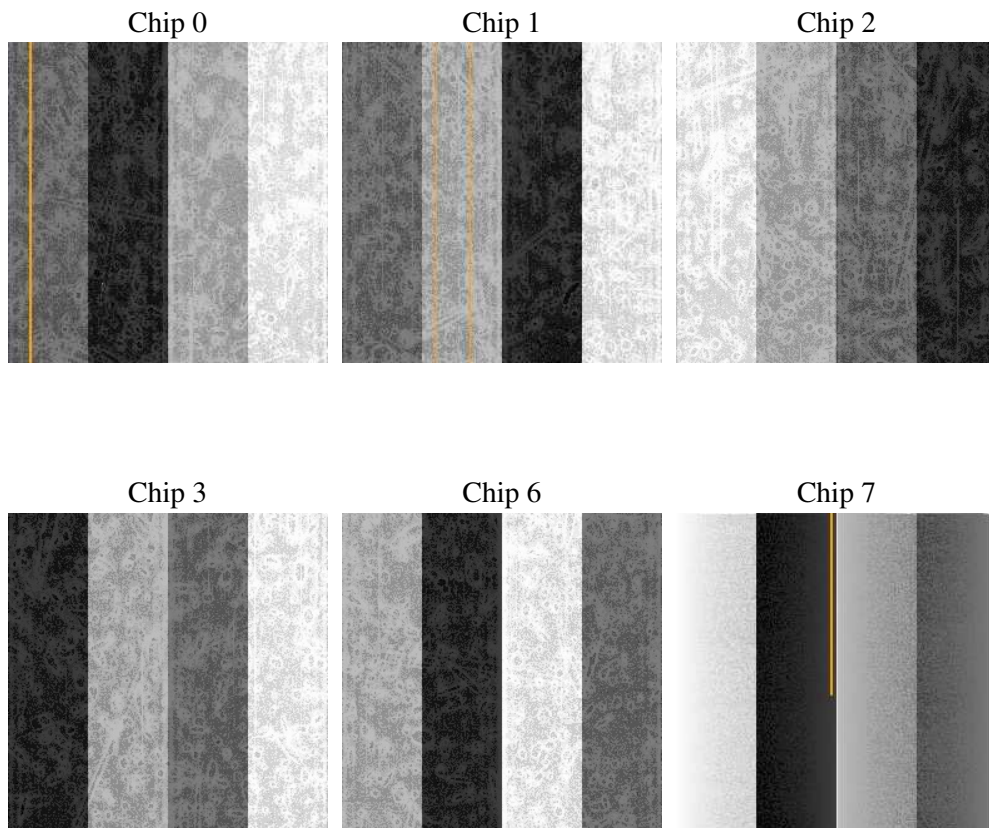
2 OBI

2.1 OBI

2.1.1 Images



2.1.2 Bias



2.1.3 Parameters

obi_num	1
ascdsver	7.6.8.1
caldsver	3.2.3
date	2006-09-08T14:10:54
revision	2

sched_exp_time	0.0
ontime	7797.8581058681
ontime0	3241.0348221511
ontime1	3315.5786525756
ontime2	3127.5991895199
ontime3	3185.9372519553
ontime6	3432.2548670173
ontime7	7797.8581058681
l1events	1442262

2.1.4 Events

	ccd 0	ccd 1	ccd 2	ccd 3	ccd 6	ccd 7
level 1 events	191224	195939	187079	192468	212936	462616
rejected events	21666	21557	21375	23204	23767	54342
rejected %	11%	11%	11%	12%	11%	11%

	ccd 0	ccd 1	ccd 2	ccd 3	ccd 6	ccd 7
grade 0 events	92960	96407	92492	95041	102984	74695
	48%	49%	49%	49%	48%	16%
grade 1 events	433	432	435	509	464	179
	0%	0%	0%	0%	0%	0%
grade 2 events	30214	30581	29214	29439	32891	123870
	15%	15%	15%	15%	15%	26%
grade 3 events	10801	11105	10447	10622	11539	29983
	5%	5%	5%	5%	5%	6%
grade 4 events	10679	10992	10423	10798	11746	29399
	5%	5%	5%	5%	5%	6%
grade 5 events	1534	1570	1474	1691	1788	7173
	0%	0%	0%	0%	0%	1%
grade 6 events	25108	25460	23315	23524	30196	150501
	13%	12%	12%	12%	14%	32%
grade 7 events	19495	19392	19279	20844	21328	46816
	10%	9%	10%	10%	10%	10%

2.2 Compared Parameters

Parameter	Planned	Actual	Parameter	Planned	Actual
Instrument	ACIS	ACIS	Obspar format version number	6	6
Detector	ACIS-012367	ACIS-012367	Obspar file type	PREDICTED	ACTUAL
Grating	NONE	NONE	Obspar update status	NONE	UPDATED
Data mode	FAINT	FAINT	On-chip summing requested	N	N
Observation mode	SECONDARY	SECONDARY	Subarray requested	NONE	NONE
Pointing RA	0	181.9777133919948	Alternating exposures requested	N	N
Pointing Dec	0	12.98133620598658	Primary exposure time	3.2	3.2
Pointing Roll	0.0	187.7266926525696			
SIM focus pos (mm)	-0.782348	-0.7809083437167272			
SIM defocus (mm)	0	0.7524282956875696			
SIM translation stage pos (mm)	-233.592463	250.466033080201			
SIM translation stage offset (mm)	0	-0.01005468664627074			
Observation start time	133413985.582716	133413984.81423			
Observation start date	2002-03-25T03:26:26	2002-03-25T03:26:24			
Observation end time	133425244.183173	133425243.41468			
Observation end date	2002-03-25T06:34:04	2002-03-25T06:34:03			
Read mode	TIMED	TIMED			

2.3 Aspect

2.4 Star Slots

2.5 FID Slots

A Summary

A.1 Status

V&V Scientist	Beth Sundheim
V&V Date (YYYY-MM-DD)	2006.09.08
V&V Edition	1
V&V Disposition and Status	OK
V&V Charge Time	7.79485826

A.2 Comments