

V&V Reference Report

L2 ASCDS Version : 7.6.9

Observation 61216 - L2 Version 001
Chandra X-Ray Center

L2 Processing Date : Sep 15 2006

Contents

1	Front	2
2	OBI	3
2.1	OBI	3
2.1.1	Images	3
2.1.2	Bias	3
2.1.3	Parameters	4
2.1.4	Events	4
2.2	Compared Parameters	5
2.3	Aspect	6
2.4	Star Slots	8
2.5	FID Slots	8
A	Summary	9
A.1	Status	9
A.2	Comments	9

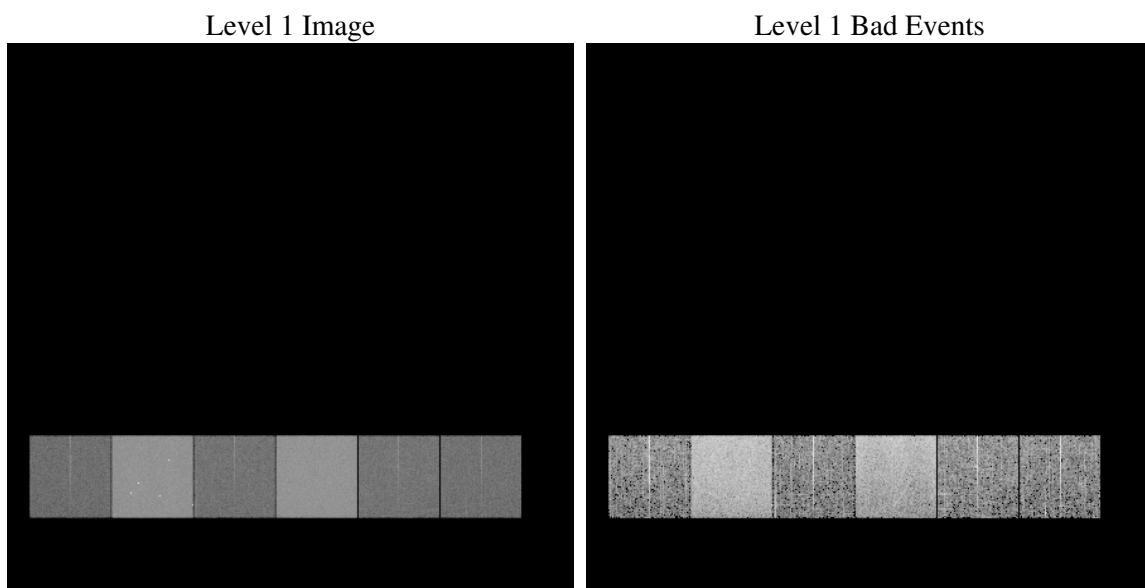
1 Front

seq_num	
obs_id	61216
title	ACIS-456789 diagnostics
observer	CHANDRA engineering request/realtime commanding
object	
dtcycle	0
cycle	P
ra_targ	0.0
dec_targ	0.0
ra_nom	200.02022510107
dec_nom	-20.021411174865
roll_nom	278.73384332475
revision	2
ontime	6861.8848635852
livetime	6774.9955457115
ontime4	2502.9472978115
ontime5	7357.7520547211
ontime6	2713.5735185444
ontime7	6861.8848635852
ontime8	2775.2349696159
ontime9	2671.3169782758
l2events	1193520

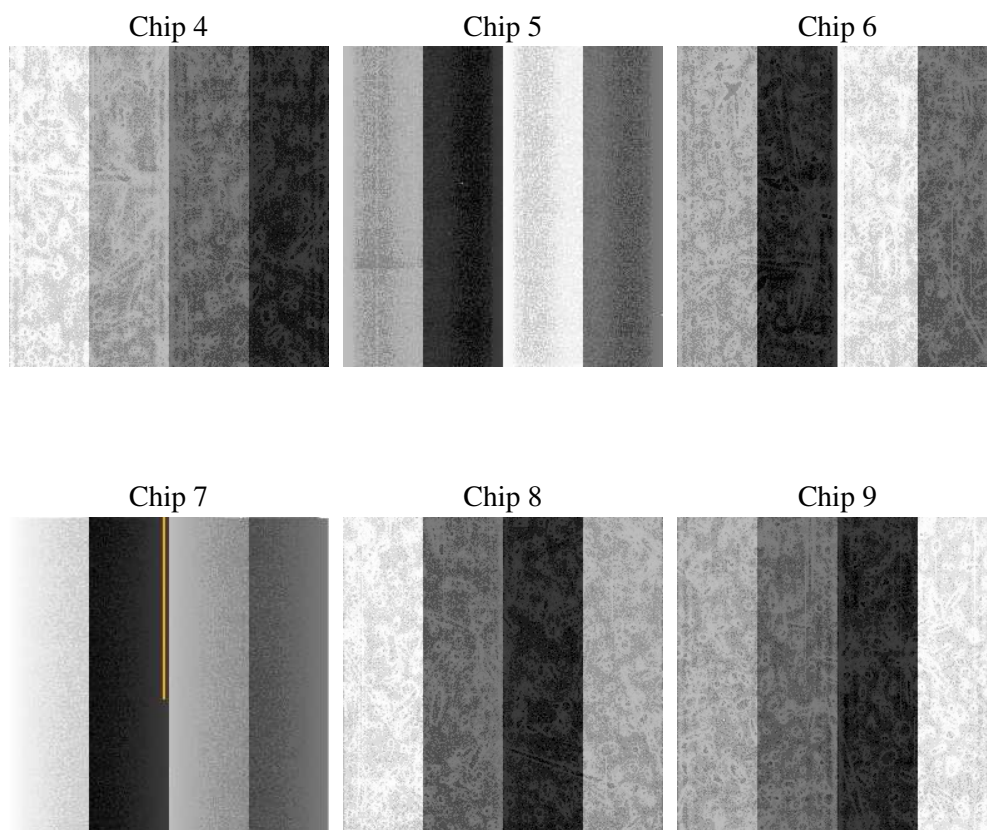
2 OBI

2.1 OBI

2.1.1 Images



2.1.2 Bias



2.1.3 Parameters

obi_num	0
ascdsver	7.6.9
caldsver	3.2.3
date	2006-09-15T06:30:16
revision	2

sched_exp_time	0.0
ontime	6864.4504600465
ontime4	2505.3213622272
ontime5	7360.3176511824
ontime6	2715.9886229634
ontime7	6864.4504600465
ontime8	2777.5679940581
ontime9	2673.8552027047
l1events	1447067

2.1.4 Events

	ccd 4	ccd 5	ccd 6	ccd 7	ccd 8	ccd 9
level 1 events	145432	399214	166677	405337	172581	157826
rejected events	21704	61803	21028	49942	23440	21014
rejected %	14%	15%	12%	12%	13%	13%

	ccd 4	ccd 5	ccd 6	ccd 7	ccd 8	ccd 9
grade 0 events	69809	44655	79650	66592	82034	75501
	48%	11%	47%	16%	47%	47%
grade 1 events	384	139	352	164	413	364
	0%	0%	0%	0%	0%	0%
grade 2 events	22039	158897	25233	105867	26301	23949
	15%	39%	15%	26%	15%	15%
grade 3 events	7552	11939	9028	27325	9470	8339
	5%	2%	5%	6%	5%	5%
grade 4 events	7639	11496	9027	26579	9430	8477
	5%	2%	5%	6%	5%	5%
grade 5 events	1247	6863	1538	6695	1708	1507
	0%	1%	0%	1%	0%	0%
grade 6 events	16865	110595	22885	129202	22067	20724
	11%	27%	13%	31%	12%	13%
grade 7 events	19897	54630	18964	42913	21158	18965
	13%	13%	11%	10%	12%	12%

2.2 Compared Parameters

Parameter	Planned	Actual	Parameter	Planned	Actual
Instrument	ACIS	ACIS	Obspar format version number	6	6
Detector	ACIS-456789	ACIS-456789	Obspar file type	PREDICTED	ACTUAL
Grating	NONE	NONE	Obspar update status	NONE	UPDATED
Data mode	FAINT	FAINT	On-chip summing requested	N	N
Observation mode	SECONDARY	SECONDARY	Subarray requested	NONE	NONE
Pointing RA	0	200.0202251010737	Alternating exposures requested	N	N
Pointing Dec	0	-20.02141117486488	Primary exposure time	3.2	3.2
Pointing Roll	0.0	278.7338433247475			
SIM focus pos (mm)	-0.684267	-0.7809083437167272			
SIM defocus (mm)	0	0.7524282956875696			
SIM translation stage pos (mm)	-190.132523	250.466033080201			
SIM translation stage offset (mm)	0	-0.01005468664627074			
Observation start time	136843793.828386	136843792.80366			
Observation start date	2002-05-03T20:09:54	2002-05-03T20:09:52			
Observation end time	136867038.779335	136867037.7546			
Observation end date	2002-05-04T02:37:19	2002-05-04T02:37:17			
Read mode	TIMED	TIMED			

2.3 Aspect

2.4 Star Slots

2.5 FID Slots

A Summary

A.1 Status

V&V Scientist	Doug Morgan
V&V Date (YYYY-MM-DD)	2006.09.15
V&V Edition	1
V&V Disposition and Status	OK
V&V Charge Time	6.86188486

A.2 Comments