

V&V Reference Report

L2 ASCDS Version : 8.4.5

Observation 60236 - L2 Version 3
Chandra X-Ray Center

L2 Processing Date : Dec 1 2012

Contents

1	Front	2
2	OBI	3
2.1	OBI	3
2.1.1	Images	3
2.1.2	Bias	3
2.1.3	Parameters	4
2.1.4	Events	4
2.2	Compared Parameters	5
2.3	Star Slots	6
2.4	FID Slots	6
A	Summary	7
A.1	Status	7
A.2	Comments	7

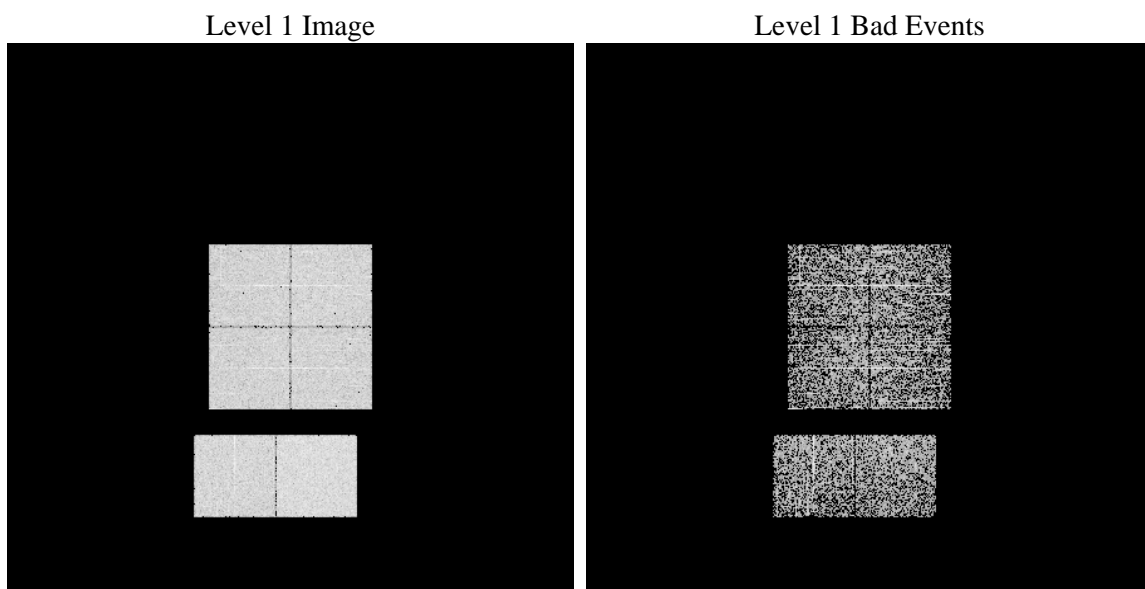
1 Front

seq_num	 	Sequence number
obs_id	60236	Observation id
title	ACIS-012367 diagnostics	Proposal title
observer	CHANDRA engineering request/realtime commanding	Principal investig
object	 	Source name
dtcycle	0	
cycle	P	events from which exps? Prim/Second/Both
ra_targ	0.0	Observer's specified target RA [deg]
dec_targ	0.0	Observer's specified target Dec [deg]
ra_nom	198.0056207796	Nominal RA [deg]
dec_nom	-8.0280868176298	Nominal Dec [deg]
roll_nom	248.37456589957	Nominal Roll [deg]
revision	3	Processing version of data
ontime	1081.5999959707	Sum of GTIs [s]
livetime	1067.9041255604	Livetime [s]
ontime0	873.83402821422	Sum of GTIs [s]
ontime1	919.55135151744	Sum of GTIs [s]
ontime2	874.17746862769	Sum of GTIs [s]
ontime3	861.21385648847	Sum of GTIs [s]
ontime6	932.29471328855	Sum of GTIs [s]
ontime7	1081.5999959707	Sum of GTIs [s]
l2events	171959	Number of level 2 events

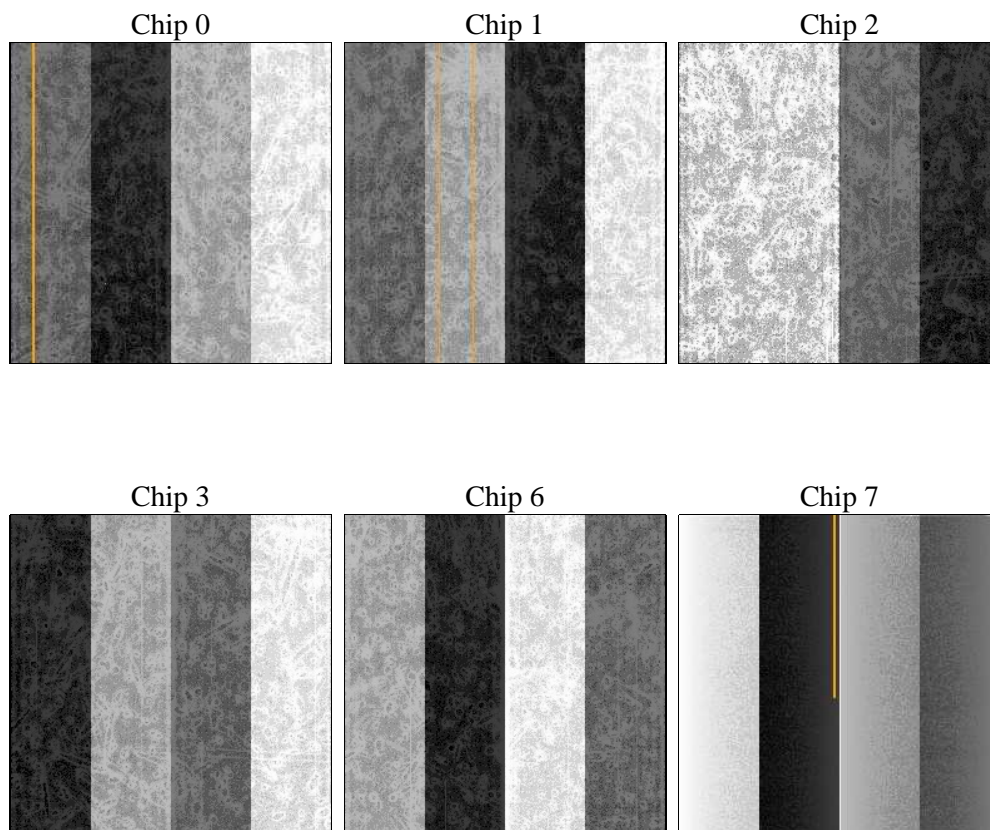
2 OBI

2.1 OBI

2.1.1 Images



2.1.2 Bias



2.1.3 Parameters

obi_num	0	Obi number	sched_exp_time	0.0	[s] Scheduled observation exposure time
ascdsver	8.4.5	Processing system revision	ontime	1081.5999959707	Sum of GTIs [s]
caldsver	4.5.2	 	ontime0	873.83402821422	Sum of GTIs [s]
date	2012-12-01T09:43:04	Date and time of file creation	ontime1	919.55135151744	Sum of GTIs [s]
revision	3	Processing version of data	ontime2	874.17746862769	Sum of GTIs [s]
			ontime3	861.21385648847	Sum of GTIs [s]
			ontime6	932.29471328855	Sum of GTIs [s]
			ontime7	1081.5999959707	Sum of GTIs [s]
			l1events	219965	Number of level 1 events

2.1.4 Events

	ccd 0	ccd 1	ccd 2	ccd 3	ccd 6	ccd 7
level 1 events	33574	36142	34123	34409	37673	44044
rejected events	6270	6561	6302	6834	6918	6470
rejected %	18%	18%	18%	19%	18%	14%

	ccd 0	ccd 1	ccd 2	ccd 3	ccd 6	ccd 7
grade 0 events	14815	16171	15510	15456	16639	9237
	44%	44%	45%	44%	44%	20%
grade 1 events	85	80	99	109	86	27
	0%	0%	0%	0%	0%	0%
grade 2 events	4745	5249	4769	4648	5337	8319
	14%	14%	13%	13%	14%	18%
grade 3 events	1743	1911	1839	1837	1854	3791
	5%	5%	5%	5%	4%	8%
grade 4 events	1735	1854	1813	1847	1942	3781
	5%	5%	5%	5%	5%	8%
grade 5 events	410	383	397	430	452	1170
	1%	1%	1%	1%	1%	2%
grade 6 events	4266	4504	3994	3899	4983	12575
	12%	12%	11%	11%	13%	28%
grade 7 events	5775	5990	5702	6183	6380	5144
	17%	16%	16%	17%	16%	11%

2.2 Compared Parameters

Parameter	Planned	Actual
Instrument	ACIS	ACIS
Detector	ACIS-012367	ACIS-012367
Grating	NONE	NONE
Data mode	FAINT	FAINT
Observation mode	SECONDARY	SECONDARY
[deg] Pointing RA	0	198.0056207795965
[deg] Pointing Dec	0	-8.028086817629813
[deg] Pointing Roll	0.0	248.3745658995666
[mm] SIM focus pos	-0.782348	-0.6828225247311905
[mm] SIM defocus	0	0.8505141146731063
[mm] SIM translation stage pos	-233.592463	250.466033080201
[mm] SIM translation stage offset	0	-0.01005468664627074
[s] Observation start time (MET)	200814134.690129	200814133.66514
Observation start date	2004-05-13T05:42:15	2004-05-13T05:42:13
[s] Observation end time (MET)	200847646.041608	200847645.01662
Observation end date	2004-05-13T15:00:46	2004-05-13T15:00:45
Read mode	TIMED	TIMED

Parameter	Planned	Actual
Obspar format version number	7	7
Obspar file type	PREDICTED	ACTUAL
Obspar update status	NONE	UPDATED
On-chip summing requested	N	N
Subarray requested	NONE	NONE
Alternating exposures requested	N	N
[s] Primary exposure time	0.000000	3.2

2.3 Star Slots

2.4 FID Slots

A Summary

A.1 Status

V&V Scientist	Jen Lauer
V&V Date (YYYY-MM-DD)	2012.12.18
V&V Edition	1
V&V Disposition and Status	OK
V&V Charge Time	1.0815999959707

A.2 Comments