

V&V Reference Report

L2 ASCDS Version : 7.6.7.2

Observation 60226 - L2 Version 001
Chandra X-Ray Center

L2 Processing Date : May 17 2006

Contents

1	Front	2
2	OBI	3
2.1	OBI	3
2.1.1	Images	3
2.1.2	Bias	3
2.1.3	Parameters	4
2.1.4	Events	4
2.2	Compared Parameters	5
2.3	Aspect	6
2.4	Star Slots	8
2.5	FID Slots	8
A	Summary	9
A.1	Status	9
A.2	Comments	9

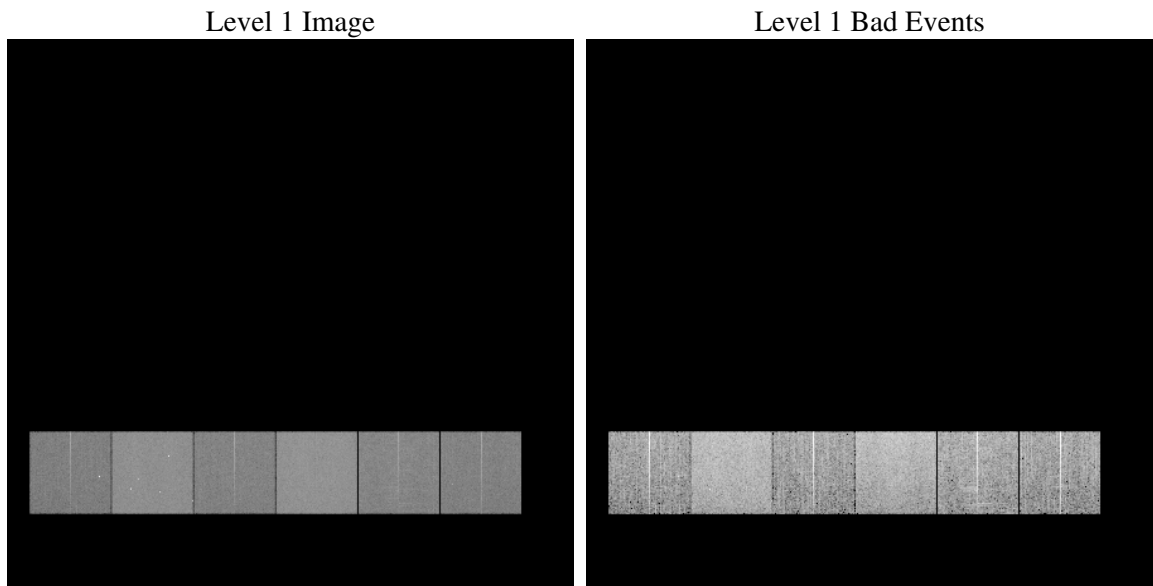
1 Front

seq_num	
obs_id	60226
title	ACIS-456789 diagnostics
observer	CHANDRA engineering request/realtime commanding
object	
dtcycle	0
cycle	P
ra_targ	0.0
dec_targ	0.0
ra_nom	107.99960033126
dec_nom	-13.02859177868
roll_nom	236.30444957951
revision	2
ontime	8456.5910033584
livetime	8349.5085561261
ontime4	5329.1842440665
ontime5	8456.6320433617
ontime6	5705.0963099897
ontime7	8456.5910033584
ontime8	5928.804520458
ontime9	5640.153844744
l2events	1156560

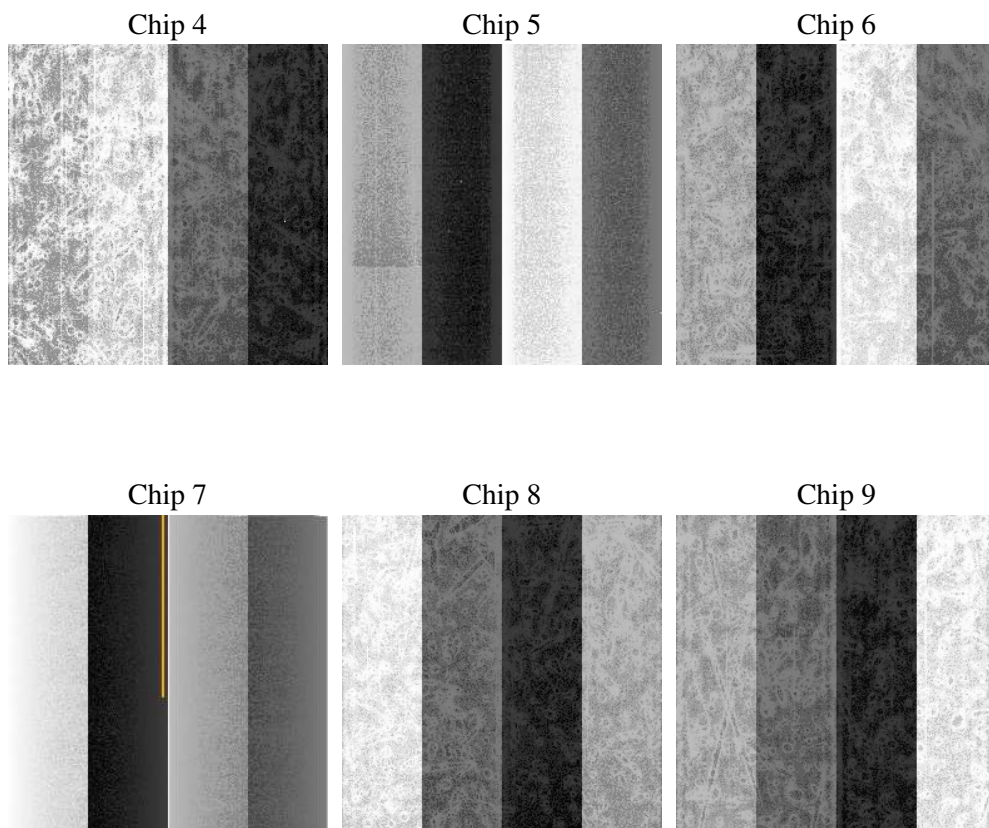
2 OBI

2.1 OBI

2.1.1 Images



2.1.2 Bias



2.1.3 Parameters

obi_num	0
ascdsver	7.6.7.2
caldsver	3.2.2
date	2006-05-17T08:14:23
revision	2

sched_exp_time	0.0
ontime	8459.0053533614
ontime4	5331.4754740596
ontime5	8459.0053533614
ontime6	5707.4285799861
ontime7	8459.0053533614
ontime8	5931.0547104776
ontime9	5642.6092347503
l1events	1530762

2.1.4 Events

	ccd 4	ccd 5	ccd 6	ccd 7	ccd 8	ccd 9
level 1 events	201007	311831	224400	333955	242132	217437
rejected events	41855	66692	42588	63206	48485	43293
rejected %	20%	21%	18%	18%	20%	19%

	ccd 4	ccd 5	ccd 6	ccd 7	ccd 8	ccd 9
grade 0 events	92846	27965	98941	46083	105425	95726
	46%	8%	44%	13%	43%	44%
grade 1 events	675	157	525	153	553	562
	0%	0%	0%	0%	0%	0%
grade 2 events	25180	115435	31428	82313	34061	29993
	12%	37%	14%	24%	14%	13%
grade 3 events	10679	7492	11243	19107	12657	11334
	5%	2%	5%	5%	5%	5%
grade 4 events	10587	7497	11208	19087	12532	11057
	5%	2%	4%	5%	5%	5%
grade 5 events	2518	6649	2811	7574	3481	2972
	1%	2%	1%	2%	1%	1%
grade 6 events	19955	86851	29073	104265	29072	26130
	9%	27%	12%	31%	12%	12%
grade 7 events	38567	59785	39171	55373	44351	39663
	19%	19%	17%	16%	18%	18%

2.2 Compared Parameters

Parameter	Planned	Actual	Parameter	Planned	Actual
Instrument	ACIS	ACIS	Obspar format version number	6	6
Detector	ACIS-456789	ACIS-456789	Obspar file type	PREDICTED	ACTUAL
Grating	NONE	NONE	Obspar update status	NONE	UPDATED
Data mode	FAINT	FAINT	On-chip summing requested	N	N
Observation mode	SECONDARY	SECONDARY	Subarray requested	NONE	NONE
Pointing RA	0	107.9996003312551	Alternating exposures requested	N	N
Pointing Dec	0	-13.02859177868013	Primary exposure time	0.000000	3.2
Pointing Roll	0.0	236.3044495795149			
SIM focus pos (mm)	-0.684267	-0.6828225247311905			
SIM defocus (mm)	0	0.8505141146731063			
SIM translation stage pos (mm)	-190.132523	250.4635187648994			
SIM translation stage offset (mm)	0	-0.007540371344731511			
Observation start time	201533192.721906	201533191.6969			
Observation start date	2004-05-21T13:26:33	2004-05-21T13:26:31			
Observation end time	201556349.522929	201556348.49792			
Observation end date	2004-05-21T19:52:30	2004-05-21T19:52:28			
Read mode	TIMED	TIMED			

2.3 Aspect

2.4 Star Slots

2.5 FID Slots

A Summary

A.1 Status

V&V Scientist	Jen Lauer
V&V Date (YYYY-MM-DD)	2006.05.17
V&V Edition	1
V&V Disposition and Status	OK
V&V Charge Time	8.456591

A.2 Comments