

V&V Reference Report

L2 ASCDS Version : 7.6.7.1

Observation 60026 - L2 Version 001
Chandra X-Ray Center

L2 Processing Date : Apr 17 2006

Contents

1	Front	2
2	OBI	3
2.1	OBI	3
2.1.1	Images	3
2.1.2	Bias	3
2.1.3	Parameters	4
2.1.4	Events	4
2.2	Compared Parameters	5
2.3	Aspect	6
2.4	Star Slots	8
2.5	FID Slots	8
A	Summary	9
A.1	Status	9
A.2	Comments	9

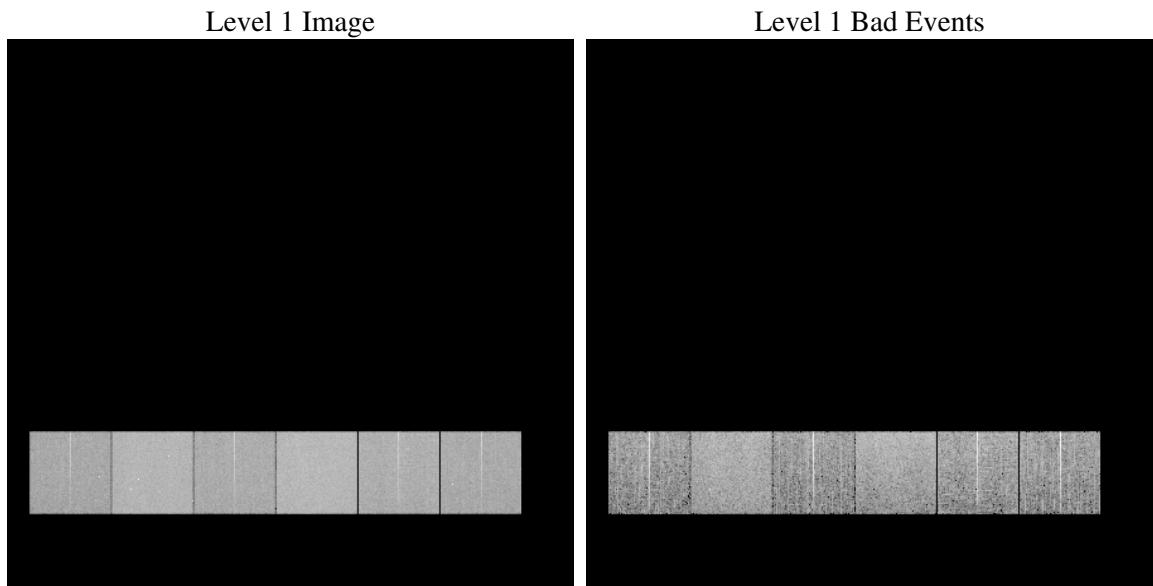
1 Front

seq_num	
obs_id	60026
title	ACIS-456789 diagnostics
observer	CHANDRA engineering request/realtime commanding
object	
dtcycle	0
cycle	P
ra_targ	0.0
dec_targ	0.0
ra_nom	13.008327993704
dec_nom	-7.9727903740363
roll_nom	39.079300952373
revision	2
ontime	6652.7999752164
livetime	6568.558216095
ontime4	4702.4486076236
ontime5	6652.7999752164
ontime6	5012.8670722246
ontime7	6652.7999752164
ontime8	5168.4334874749
ontime9	4863.7821397483
l2events	892163

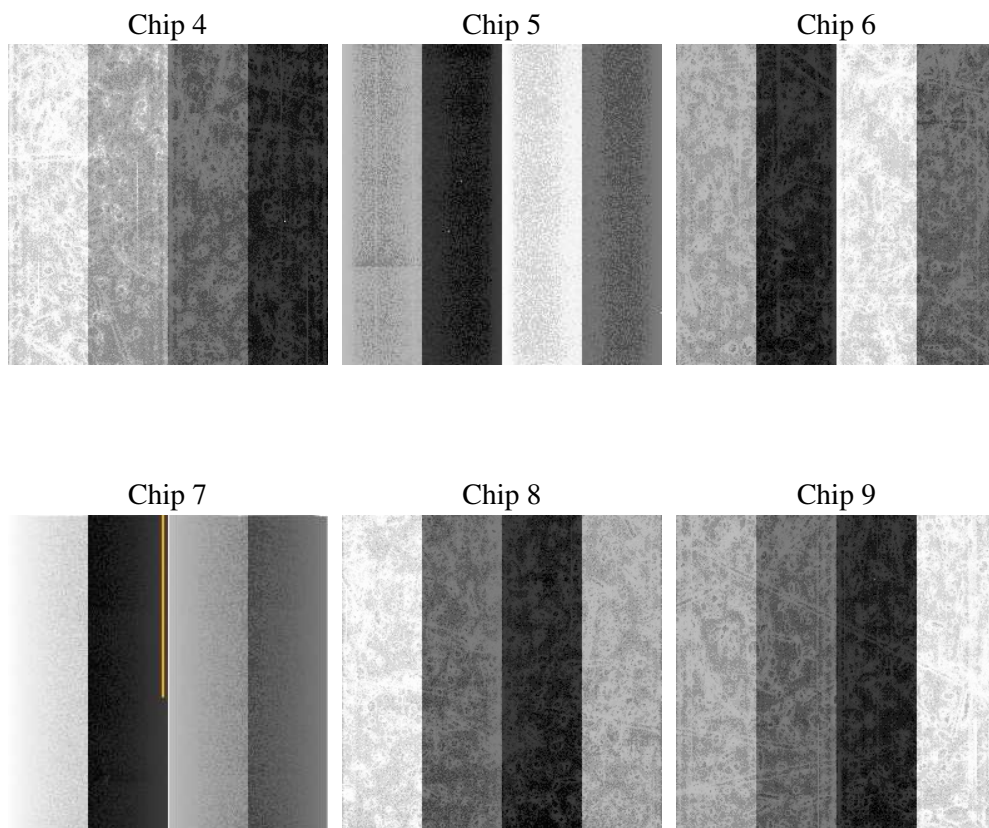
2 OBI

2.1 OBI

2.1.1 Images



2.1.2 Bias



2.1.3 Parameters

obi_num	0
ascdsver	7.6.7.1
caldbver	3.2.1
date	2006-04-17T02:03:39
revision	2

sched_exp_time	0.0
ontime	6653.7835972607
ontime4	4702.7167404592
ontime5	6653.7835972607
ontime6	5013.8506942689
ontime7	6653.7835972607
ontime8	5169.4171095192
ontime9	4864.7657617927
l1events	1207987

2.1.4 Events

	ccd 4	ccd 5	ccd 6	ccd 7	ccd 8	ccd 9
level 1 events	165337	232259	184849	248508	199436	177598
rejected events	37708	53074	37850	50425	43630	40096
rejected %	22%	22%	20%	20%	21%	22%

	ccd 4	ccd 5	ccd 6	ccd 7	ccd 8	ccd 9
grade 0 events	74106	18981	80119	33299	84658	75724
	44%	8%	43%	13%	42%	42%
grade 1 events	575	88	428	83	483	488
	0%	0%	0%	0%	0%	0%
grade 2 events	19892	83919	25509	60149	27344	23508
	12%	36%	13%	24%	13%	13%
grade 3 events	8635	5604	9096	14105	9927	8812
	5%	2%	4%	5%	4%	4%
grade 4 events	8571	5393	9046	13833	10109	8757
	5%	2%	4%	5%	5%	4%
grade 5 events	2215	5200	2493	5918	3075	2575
	1%	2%	1%	2%	1%	1%
grade 6 events	16425	65288	23229	76697	23768	20701
	9%	28%	12%	30%	11%	11%
grade 7 events	34918	47786	34929	44424	40072	37033
	21%	20%	18%	17%	20%	20%

2.2 Compared Parameters

Parameter	Planned	Actual	Parameter	Planned	Actual
Instrument	ACIS	ACIS	Obspar format version number	6	6
Detector	ACIS-456789	ACIS-456789	Obspar file type	PREDICTED	ACTUAL
Grating	NONE	NONE	Obspar update status	NONE	UPDATED
Data mode	FAINT	FAINT	On-chip summing requested	N	N
Observation mode	SECONDARY	SECONDARY	Subarray requested	NONE	NONE
Pointing RA	0	13.00832799370401	Alternating exposures requested	N	N
Pointing Dec	0	-7.972790374036307	Primary exposure time	3.2	3.2
Pointing Roll	0.0	39.07930095237288			
SIM focus pos (mm)	-0.684267	-0.6828225247311905			
SIM defocus (mm)	0	0.8505141146731063			
SIM translation stage pos (mm)	-190.132523	250.466033080201			
SIM translation stage offset (mm)	0	-0.01005468664627074			
Observation start time	212729585.969283	212729584.94427			
Observation start date	2004-09-28T03:33:06	2004-09-28T03:33:04			
Observation end time	212750420.120216	212750419.0952			
Observation end date	2004-09-28T09:20:20	2004-09-28T09:20:19			
Read mode	TIMED	TIMED			

2.3 Aspect

2.4 Star Slots

2.5 FID Slots

A Summary

A.1 Status

V&V Scientist	Jen Lauer
V&V Date (YYYY-MM-DD)	2006.04.17
V&V Edition	1
V&V Disposition and Status	OK
V&V Charge Time	6.65279997

A.2 Comments