

V&V Reference Report

L2 ASCDS Version : 7.6.7.1

Observation 59946 - L2 Version 002
Chandra X-Ray Center

L2 Processing Date : Apr 10 2006

Contents

1	Front	2
2	OBI	3
2.1	OBI	3
2.1.1	Images	3
2.1.2	Bias	3
2.1.3	Parameters	4
2.1.4	Events	4
2.2	Compared Parameters	5
2.3	Aspect	6
2.4	Star Slots	8
2.5	FID Slots	8
A	Summary	9
A.1	Status	9
A.2	Comments	9

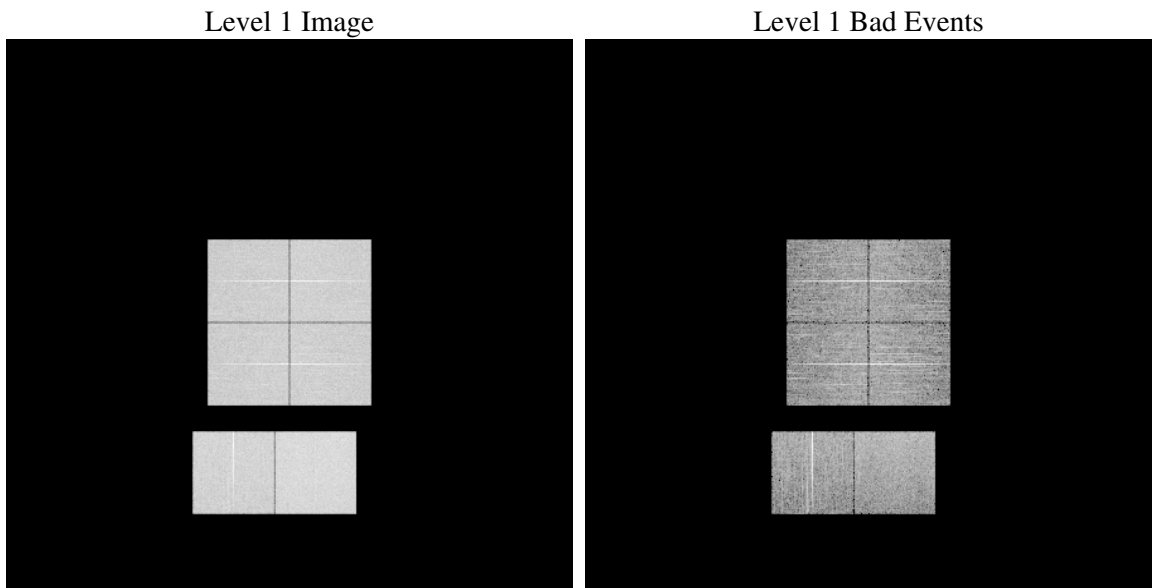
1 Front

seq_num	
obs_id	59946
title	ACIS-012367 diagnostics
observer	CHANDRA engineering request/realtime commanding
object	
dtcycle	0
cycle	P
ra_targ	0.0
dec_targ	0.0
ra_nom	38.600983088718
dec_nom	41.371426932615
roll_nom	238.57698305878
revision	2
ontime	7798.3999709487
livetime	7699.6519348838
ontime0	6395.0531054735
ontime1	6712.6699017584
ontime2	6255.6901851892
ontime3	6330.2333891392
ontime6	6890.9242571592
ontime7	7798.3999709487
l2events	1051202

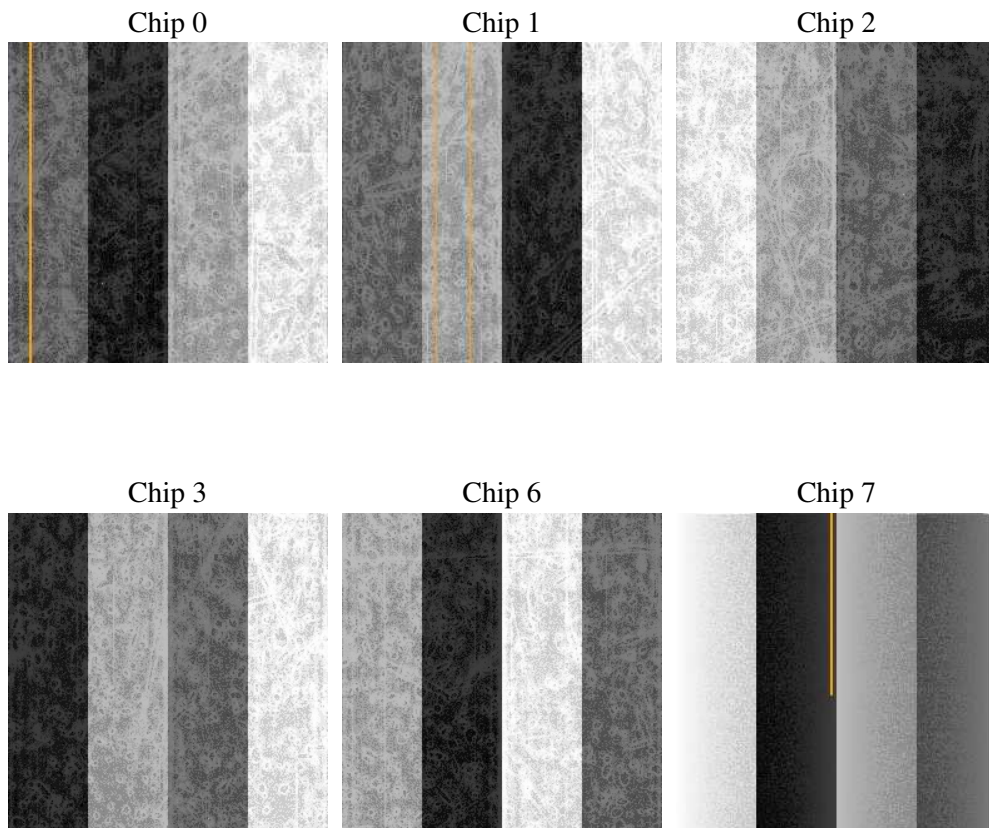
2 OBI

2.1 OBI

2.1.1 Images



2.1.2 Bias



2.1.3 Parameters

obi_num	0
ascdsver	7.6.7.1
caldbver	3.2.1
date	2006-04-11T02:31:11
revision	2

sched_exp_time	0.0
ontime	7801.1163806021
ontime0	6397.7695151269
ontime1	6715.3863114119
ontime2	6258.4065948427
ontime3	6332.9497987926
ontime6	6893.6406668127
ontime7	7801.1163806021
l1events	1410893

2.1.4 Events

	ccd 0	ccd 1	ccd 2	ccd 3	ccd 6	ccd 7
level 1 events	216710	227781	217483	221963	245373	281583
rejected events	46289	48860	48425	51232	53069	58824
rejected %	21%	21%	22%	23%	21%	20%

	ccd 0	ccd 1	ccd 2	ccd 3	ccd 6	ccd 7
grade 0 events	94026	97946	95054	96142	104418	37571
	43%	43%	43%	43%	42%	13%
grade 1 events	549	490	586	605	563	105
	0%	0%	0%	0%	0%	0%
grade 2 events	29523	32058	28595	28880	33237	67717
	13%	14%	13%	13%	13%	24%
grade 3 events	11098	11358	11107	11100	12047	15715
	5%	4%	5%	5%	4%	5%
grade 4 events	10910	11327	10674	11141	11886	15512
	5%	4%	4%	5%	4%	5%
grade 5 events	2882	3056	2606	3003	3304	7024
	1%	1%	1%	1%	1%	2%
grade 6 events	24864	26232	23628	23552	30716	86244
	11%	11%	10%	10%	12%	30%
grade 7 events	42858	45314	45233	47540	49202	51695
	19%	19%	20%	21%	20%	18%

2.2 Compared Parameters

Parameter	Planned	Actual	Parameter	Planned	Actual
Instrument	ACIS	ACIS	Obspar format version number	6	6
Detector	ACIS-012367	ACIS-012367	Obspar file type	PREDICTED	ACTUAL
Grating	NONE	NONE	Obspar update status	NONE	UPDATED
Data mode	FAINT	FAINT	On-chip summing requested	N	N
Observation mode	SECONDARY	SECONDARY	Subarray requested	NONE	NONE
Pointing RA	0	38.60098308871848	Alternating exposures requested	N	N
Pointing Dec	0	41.3714269326147	Primary exposure time	3.2	3.2
Pointing Roll	0.0	238.5769830587811			
SIM focus pos (mm)	-0.782348	-0.6828225247311905			
SIM defocus (mm)	0	0.8505141146731063			
SIM translation stage pos (mm)	-233.592463	250.466033080201			
SIM translation stage offset (mm)	0	-0.01005468664627074			
Observation start time	218175644.91325	218175643.88825			
Observation start date	2004-11-30T04:20:45	2004-11-30T04:20:43			
Observation end time	218213496.114952	218213495.08996			
Observation end date	2004-11-30T14:51:36	2004-11-30T14:51:35			
Read mode	TIMED	TIMED			

2.3 Aspect

2.4 Star Slots

2.5 FID Slots

A Summary

A.1 Status

V&V Scientist	Jen Lauer
V&V Date (YYYY-MM-DD)	2006.04.11
V&V Edition	1
V&V Disposition and Status	OK
V&V Charge Time	7.79839997

A.2 Comments

The ACIS focal plane temp was above calibration limits for the second half of the observation.