

# V&V Reference Report

## L2 ASCDS Version : 8.5.1.1

Observation 59566 - L2 Version 4  
Chandra X-Ray Center

L2 Processing Date : Dec 26 2012

## Contents

<b>1</b>	<b>Front</b>	<b>2</b>
<b>2</b>	<b>OBI</b>	<b>3</b>
2.1	OBI . . . . .	3
2.1.1	Images . . . . .	3
2.1.2	Bias . . . . .	3
2.1.3	Parameters . . . . .	4
2.1.4	Events . . . . .	4
2.2	Compared Parameters . . . . .	5
2.3	Star Slots . . . . .	6
2.4	FID Slots . . . . .	6
<b>A</b>	<b>Summary</b>	<b>7</b>
A.1	Status . . . . .	7
A.2	Comments . . . . .	7

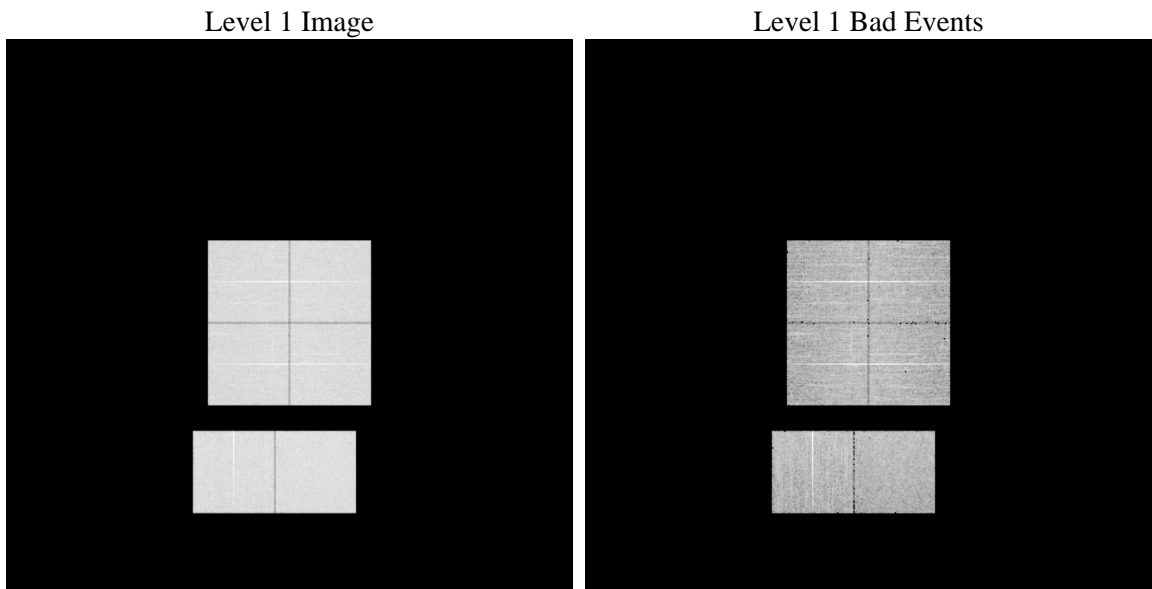
# 1 Front

seq_num	&#160	Sequence number
obs_id	59566	Observation id
title	ACIS-012367 diagnostics	Proposal title
observer	CHANDRA engineering request/realtime commanding	Principal investig
object	&#160	Source name
dtcycle	0	&#160
cycle	P	events from which exps? Prim/Second/Both
ra_targ	0.0	Observer's specified target RA [deg]
dec_targ	0.0	Observer's specified target Dec [deg]
ra_nom	162.38086202248	Nominal RA [deg]
dec_nom	23.747293735124	Nominal Dec [deg]
roll_nom	261.07126776281	Nominal Roll [deg]
revision	4	Processing version of data
ontime	7983.9999702573	Sum of GTIs [s]
livetime	7882.9017552463	Livetime [s]
ontime0	7663.1450903416	Sum of GTIs [s]
ontime1	7948.3493870497	Sum of GTIs [s]
ontime2	7475.1688155532	Sum of GTIs [s]
ontime3	7698.7956039608	Sum of GTIs [s]
ontime6	7938.6266657412	Sum of GTIs [s]
ontime7	7983.9999702573	Sum of GTIs [s]
l2events	1048563	Number of level 2 events

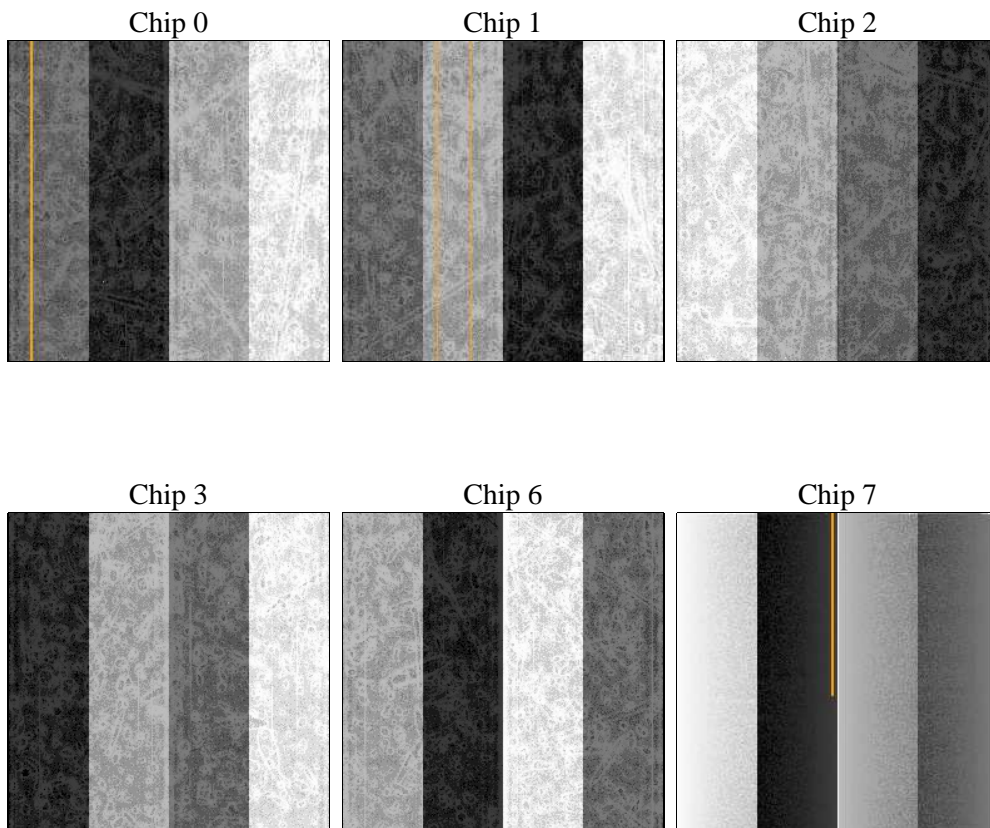
## 2 OBI

### 2.1 OBI

#### 2.1.1 Images



#### 2.1.2 Bias



### 2.1.3 Parameters

obi_num	0	Obi number	sched_exp_time	900	[s] Scheduled observation exposure time
ascdsver	8.5.1.1	Processing system revision	ontime	7983.9999702573	Sum of GTIs [s]
caldsver	4.5.5	&#160	ontime0	7663.1450903416	Sum of GTIs [s]
date	2012-12-26T03:48:41	Date and time of file creation	ontime1	7948.3493870497	Sum of GTIs [s]
revision	4	Processing version of data	ontime2	7475.1688155532	Sum of GTIs [s]
			ontime3	7698.7956039608	Sum of GTIs [s]
			ontime6	7938.6266657412	Sum of GTIs [s]
			ontime7	7983.9999702573	Sum of GTIs [s]
			l1events	1448760	Number of level 1 events

### 2.1.4 Events

	ccd 0	ccd 1	ccd 2	ccd 3	ccd 6	ccd 7		ccd 0	ccd 1	ccd 2	ccd 3	ccd 6	ccd 7
level 1 events	232506	238902	230610	237722	251637	257383	grade 0 events	97797	100576	98686	101790	103705	47752
rejected events	57747	56544	58177	59257	61794	52394		42%	42%	42%	42%	41%	18%
rejected %	24%	23%	25%	24%	24%	20%	grade 1 events	600	453	620	609	503	178
								0%	0%	0%	0%	0%	0%
							grade 2 events	30586	33273	28522	30074	33269	45749
								13%	13%	12%	12%	13%	17%
							grade 3 events	11267	11716	11461	11913	12042	20341
								4%	4%	4%	5%	4%	7%
							grade 4 events	11571	11694	11529	11802	11656	19792
								4%	4%	4%	4%	4%	7%
							grade 5 events	3273	3390	2932	3458	3514	8455
								1%	1%	1%	1%	1%	3%
							grade 6 events	25608	27261	24326	24847	31465	73680
								11%	11%	10%	10%	12%	28%
							grade 7 events	51804	50539	52534	53229	55483	41436
								22%	21%	22%	22%	22%	16%

## 2.2 Compared Parameters

Parameter	Planned	Actual
Instrument	ACIS	ACIS
Detector	ACIS-012367	ACIS-012367
Grating	NONE	NONE
Data mode	FAINT	FAINT
Observation mode	SECONDARY	SECONDARY
[deg] Pointing RA	162.3808667641584	162.3808620224798
[deg] Pointing Dec	23.74732116732697	23.74729373512447
[deg] Pointing Roll	261.0712658542046	261.071267762805
[mm] SIM focus pos	-0.68282252473119	-0.68282252473119
[mm] SIM defocus	0.8505140384245534	0.8505140384245534
[mm] SIM translation stage pos	250.4660330802	250.4660330802
[mm] SIM translation stage offset	-0.01005726120527584	-0.01005726120527584
[s] Observation start time (MET)	237416494.786001	237416494.786001
Observation start date	2005-07-10T21:09:00	2005-07-10T21:01:34
[s] Observation end time (MET)	237424895.771506	237424895.771506
Observation end date	2005-07-10T21:24:00	2005-07-10T23:21:35
Read mode	TIMED	TIMED

Parameter	Planned	Actual
Obspar format version number	7	7
Obspar file type	PREDICTED	ACTUAL
Obspar update status	OVERRIDE	OVERRIDE
Number of optional ACIS chips dropped	0	0
On-chip summing requested	N	N
Subarray requested	NONE	NONE
Alternating exposures requested	N	N
[s] Primary exposure time	3.2	3.2

## **2.3 Star Slots**

## **2.4 FID Slots**

## A Summary

### A.1 Status

V&V Scientist	Beth Sundheim
V&V Date (YYYY-MM-DD)	2013.01.22
V&V Edition	1
V&V Disposition and Status	OK
V&V Charge Time	7.9839999702573

### A.2 Comments