

V&V Reference Report

L2 ASCDS Version : 8.4.4

Observation 58176 - L2 Version 2
Chandra X-Ray Center

L2 Processing Date : May 2 2012

Contents

1	Front	2
2	OBI	3
2.1	OBI	3
2.1.1	Images	3
2.1.2	Bias	3
2.1.3	Parameters	4
2.1.4	Events	4
2.2	Compared Parameters	5
2.3	Star Slots	6
2.4	FID Slots	6
A	Summary	7
A.1	Status	7
A.2	Comments	7

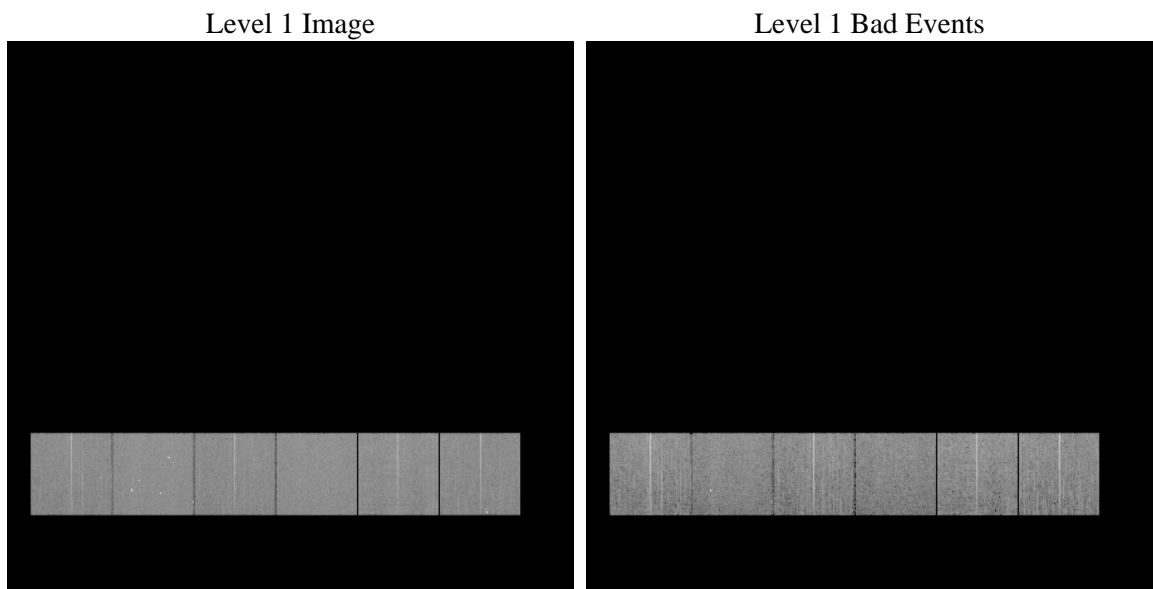
1 Front

seq_num	 	Sequence number
obs_id	58176	Observation id
title	ACIS-456789 diagnostics	Proposal title
observer	CHANDRA engineering request/realtime commanding	Principal investig
object	 	Source name
dtcycle	0	
cycle	P	events from which exps? Prim/Second/Both
ra_targ	0.0	Observer's specified target RA [deg]
dec_targ	0.0	Observer's specified target Dec [deg]
ra_nom	37.972325443698	Nominal RA [deg]
dec_nom	22.012814563346	Nominal Dec [deg]
roll_nom	120.5896885275	Nominal Roll [deg]
revision	2	Processing version of data
ontime	7790.7735075951	Sum of GTIs [s]
livetime	7692.1220424013	Livetime [s]
ontime4	7790.6503875852	Sum of GTIs [s]
ontime5	7790.7324675918	Sum of GTIs [s]
ontime6	7790.6914275885	Sum of GTIs [s]
ontime7	7790.7735075951	Sum of GTIs [s]
ontime8	7790.6093475819	Sum of GTIs [s]
ontime9	7788.1489953995	Sum of GTIs [s]
l2events	663860	Number of level 2 events

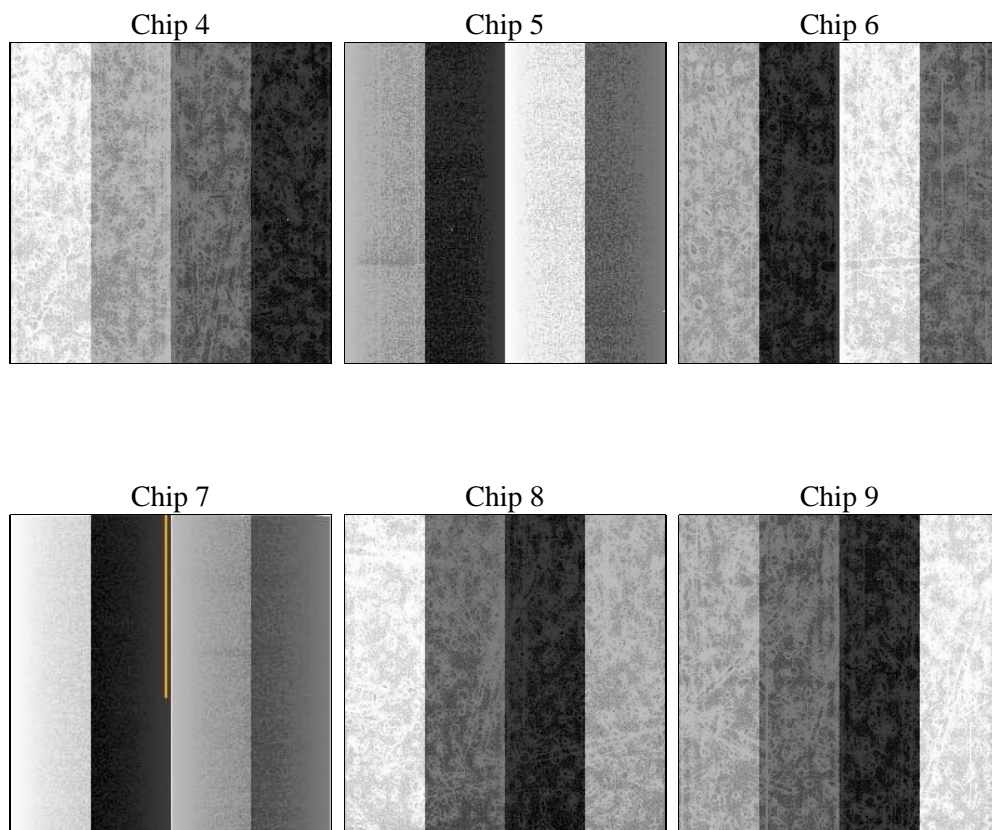
2 OBI

2.1 OBI

2.1.1 Images



2.1.2 Bias



2.1.3 Parameters

obi_num	0	Obi number	sched_exp_time	0.0	[s] Scheduled observation exposure time
ascdsver	8.4.4	Processing system revision	ontime	7790.7735075951	Sum of GTIs [s]
caldsver	4.4.9	 	ontime4	7790.6503875852	Sum of GTIs [s]
date	2012-05-02T11:19:02	Date and time of file creation	ontime5	7790.7324675918	Sum of GTIs [s]
revision	2	Processing version of data	ontime6	7790.6914275885	Sum of GTIs [s]
			ontime7	7790.7735075951	Sum of GTIs [s]
			ontime8	7790.6093475819	Sum of GTIs [s]
			ontime9	7788.1489953995	Sum of GTIs [s]
			l1events	1162597	Number of level 1 events

2.1.4 Events

	ccd 4	ccd 5	ccd 6	ccd 7	ccd 8	ccd 9		ccd 4	ccd 5	ccd 6	ccd 7	ccd 8	ccd 9
level 1 events	182779	205038	184751	203185	202116	184728	grade 0 events	59194	22992	58671	28469	62566	60143
rejected events	79855	68580	74681	63233	79935	76427		32%	11%	31%	14%	30%	32%
rejected %	43%	33%	40%	31%	39%	41%	grade 1 events	563	296	353	154	407	454
								0%	0%	0%	0%	0%	0%
							grade 2 events	15921	49846	19421	30612	22149	18025
								8%	24%	10%	15%	10%	9%
							grade 3 events	7264	6340	6806	13405	8677	6977
								3%	3%	3%	6%	4%	3%
							grade 4 events	7179	6099	7015	13128	8387	6926
								3%	2%	3%	6%	4%	3%
							grade 5 events	3975	9052	4166	10432	5343	4640
								2%	4%	2%	5%	2%	2%
							grade 6 events	13366	51181	18157	54338	20402	16230
								7%	24%	9%	26%	10%	8%
							grade 7 events	75317	59232	70162	52647	74185	71333
								41%	28%	37%	25%	36%	38%

2.2 Compared Parameters

Parameter	Planned	Actual
Instrument	ACIS	ACIS
Detector	ACIS-456789	ACIS-456789
Grating	NONE	NONE
Data mode	FAINT	FAINT
Observation mode	SECONDARY	SECONDARY
[deg] Pointing RA	0	37.97232544369842
[deg] Pointing Dec	0	22.01281456334603
[deg] Pointing Roll	0.0	120.5896885274974
[mm] SIM focus pos	-0.684267	-0.7809083437167272
[mm] SIM defocus	0	0.7524282956875696
[mm] SIM translation stage pos	-190.132523	250.4635187648994
[mm] SIM translation stage offset	0	-0.007540371344731511
[s] Observation start time (MET)	308188434.910691	308188433.88567
Observation start date	2007-10-07T23:53:55	2007-10-07T23:53:53
[s] Observation end time (MET)	308206595.861566	308206594.83655
Observation end date	2007-10-08T04:56:36	2007-10-08T04:56:34
Read mode	TIMED	TIMED

Parameter	Planned	Actual
Obspar format version number	7	7
Obspar file type	PREDICTED	ACTUAL
Obspar update status	NONE	UPDATED
On-chip summing requested	N	N
Subarray requested	NONE	NONE
Alternating exposures requested	N	N
[s] Primary exposure time	3.2	3.2

2.3 Star Slots

2.4 FID Slots

A Summary

A.1 Status

V&V Scientist	Jen Lauer
V&V Date (YYYY-MM-DD)	2012.05.04
V&V Edition	1
V&V Disposition and Status	OK
V&V Charge Time	7.7907735075951

A.2 Comments