

# V&V Reference Report

## L2 ASCDS Version : 8.5.1

Observation 5776 - L2 Version 3  
Chandra X-Ray Center

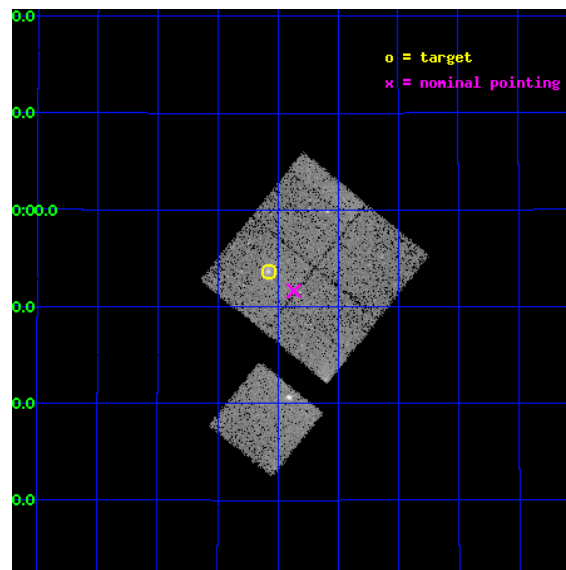
L2 Processing Date : Dec 18 2012

## Contents

<b>1</b>	<b>Front</b>	<b>2</b>
<b>2</b>	<b>OBI</b>	<b>3</b>
2.1	OBI . . . . .	3
2.1.1	Images . . . . .	3
2.1.2	Bias . . . . .	3
2.1.3	Parameters . . . . .	4
2.1.4	Events . . . . .	4
2.2	Compared Parameters . . . . .	5
2.3	Aspect . . . . .	6
2.4	Star Slots . . . . .	9
2.4.1	Slot 3 . . . . .	9
2.4.2	Slot 4 . . . . .	10
2.4.3	Slot 5 . . . . .	11
2.4.4	Slot 6 . . . . .	12
2.4.5	Slot 7 . . . . .	13
2.5	FID Slots . . . . .	14
2.5.1	Slot 0 . . . . .	14
2.5.2	Slot 1 . . . . .	15
2.5.3	Slot 2 . . . . .	16
<b>A</b>	<b>Summary</b>	<b>17</b>
A.1	Status . . . . .	17
A.2	Comments . . . . .	17

# 1 Front

seq_num	800489	Sequence number
obs_id	5776	Observation id
title	Chandra observations of high-redshift clusters of galaxies from the 400 Square Degrees ROSAT PSPC survey	Proposal title
observer	Dr. Stephen Murray	Principal investigator
object	cl1003+3253	Source name
dtcycle	0	&#160
cycle	P	events from which exps? Prim/Second/Both
ra_targ	150.76875	Observer's specified target RA [deg]
dec_targ	32.893333	Observer's specified target Dec [deg]
ra_nom	150.71696375505	Nominal RA [deg]
dec_nom	32.860803999597	Nominal Dec [deg]
roll_nom	218.8738692184	Nominal Roll [deg]
revision	3	Processing version of data
ontime	20121.977100044	Sum of GTIs [s]
livetime	19859.068655648	Livetime [s]
ontime0	20128.258961111	Sum of GTIs [s]
ontime1	20131.399961263	Sum of GTIs [s]
ontime2	20118.836040229	Sum of GTIs [s]
ontime3	20121.977100044	Sum of GTIs [s]
ontime6	20131.399961263	Sum of GTIs [s]
l2events	59435	Number of level 2 events

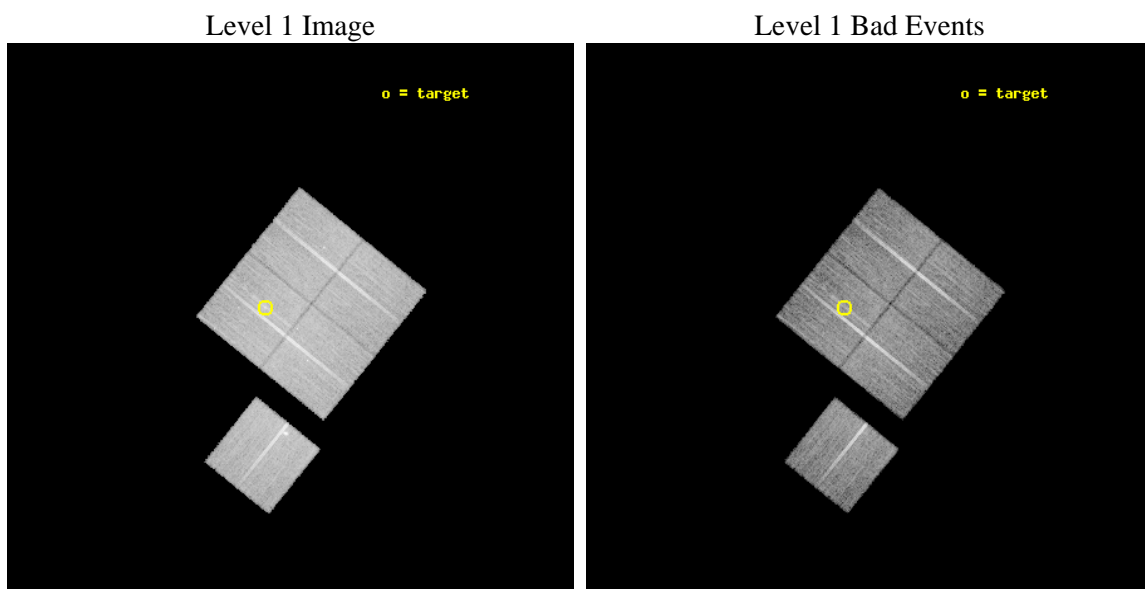




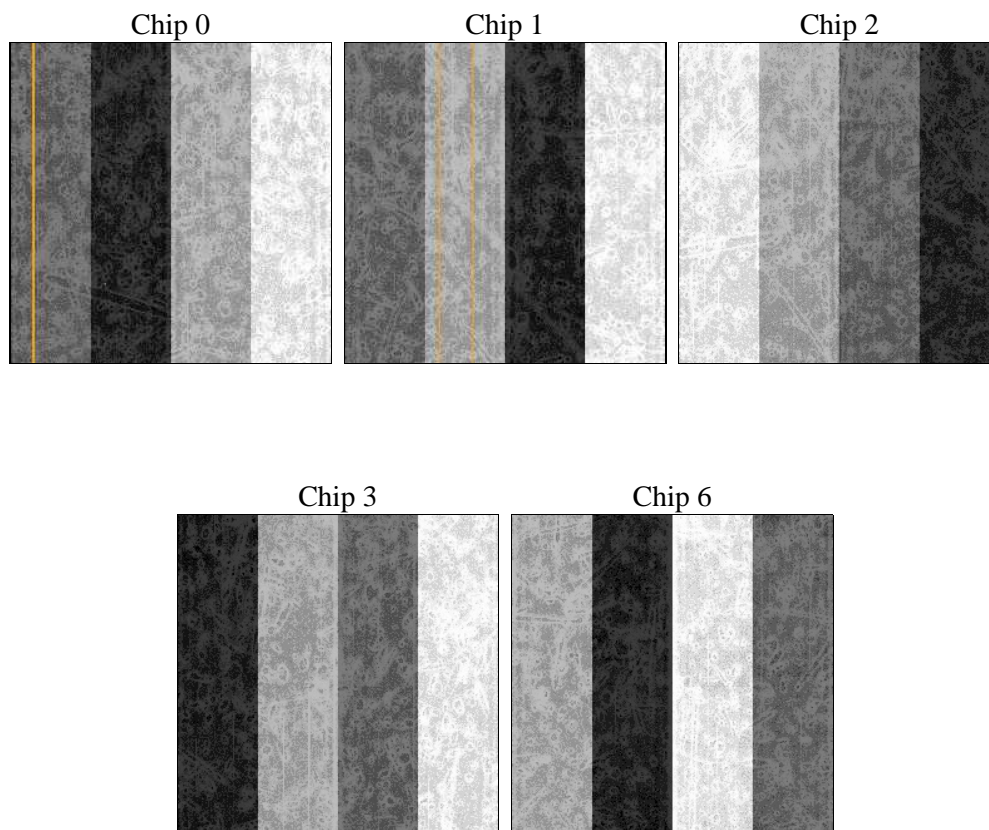
## 2 OBI

### 2.1 OBI

#### 2.1.1 Images



#### 2.1.2 Bias



### 2.1.3 Parameters

obi_num	0	Obi number	sched_exp_time	20000.000000	[s] Scheduled observation exposure time
ascdsver	8.5.1	Processing system revision	ontime	20121.977100044	Sum of GTIs [s]
caldsver	4.5.5	&#160	ontime0	20128.258961111	Sum of GTIs [s]
date	2012-12-18T07:41:23	Date and time of file creation	ontime1	20131.399961263	Sum of GTIs [s]
revision	3	Processing version of data	ontime2	20118.836040229	Sum of GTIs [s]
			ontime3	20121.977100044	Sum of GTIs [s]
			ontime6	20131.399961263	Sum of GTIs [s]
			l1events	623409	Number of level 1 events

### 2.1.4 Events

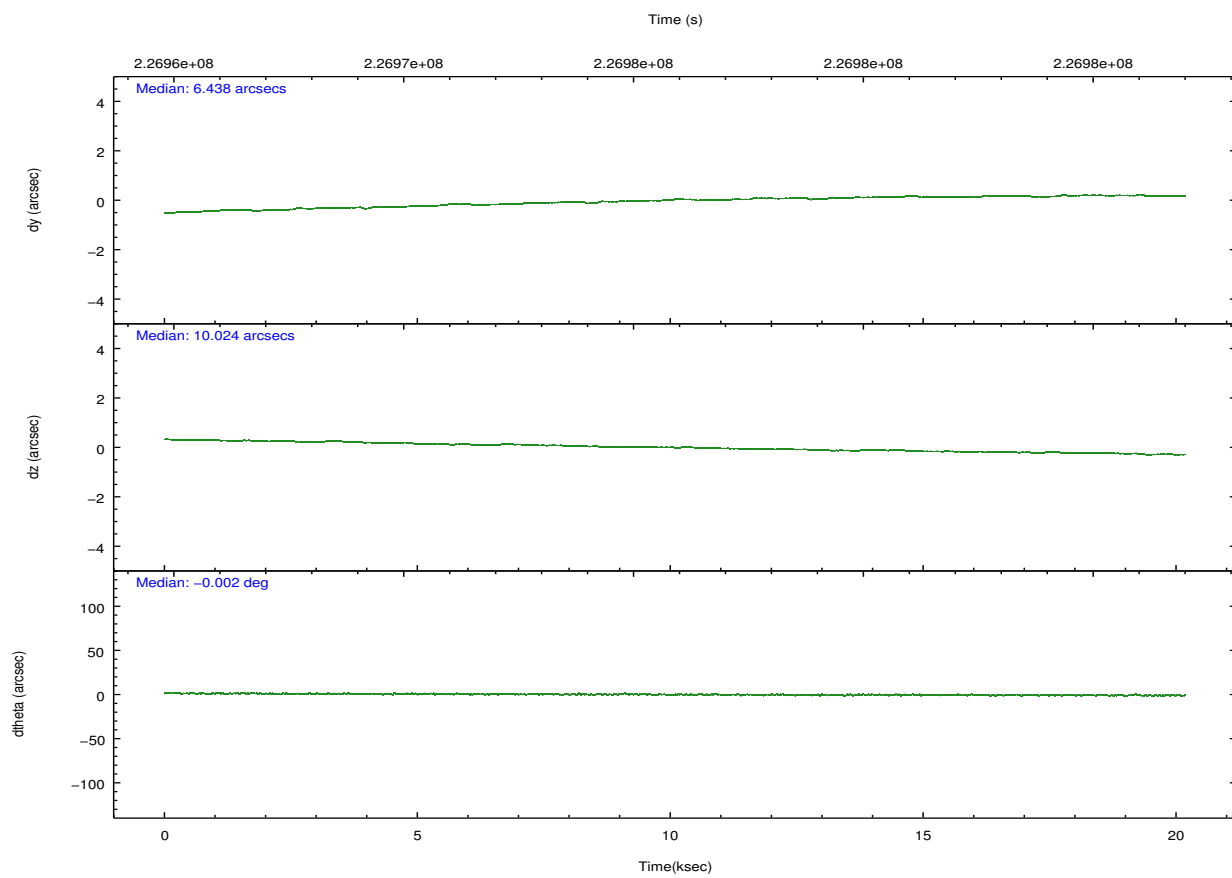
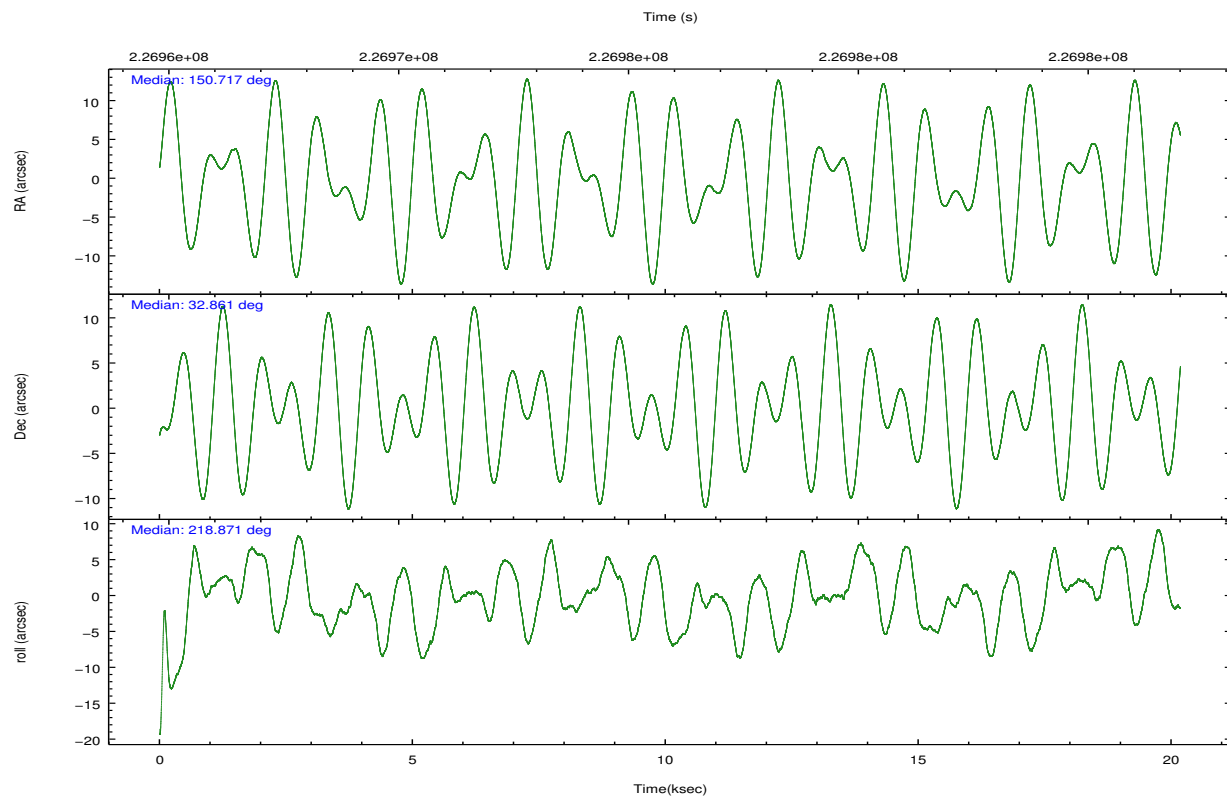
	ccd 0	ccd 1	ccd 2	ccd 3	ccd 6
level 1 events	113790	120806	133627	129260	125926
rejected events	101346	106236	118801	115615	110476
rejected %	89%	87%	88%	89%	87%

	ccd 0	ccd 1	ccd 2	ccd 3	ccd 6
grade 0 events	4345	5355	6550	5678	6682
	3%	4%	4%	4%	5%
grade 1 events	53	66	85	94	65
	0%	0%	0%	0%	0%
grade 2 events	2926	3192	3096	2722	2979
	2%	2%	2%	2%	2%
grade 3 events	1472	1549	1410	1388	1514
	1%	1%	1%	1%	1%
grade 4 events	1378	1531	1441	1430	1507
	1%	1%	1%	1%	1%
grade 5 events	4355	4779	4276	4939	4914
	3%	3%	3%	3%	3%
grade 6 events	2327	2943	2333	2429	2774
	2%	2%	1%	1%	2%
grade 7 events	96934	101391	114436	110580	105491
	85%	83%	85%	85%	83%

## 2.2 Compared Parameters

Parameter	Planned	Actual	Parameter	Planned	Actual
Instrument	ACIS	ACIS	Obspar format version number	7	7
Detector	ACIS-01236	ACIS-01236	Obspar file type	PREDICTED	ACTUAL
Grating	NONE	NONE	Obspar update status	NONE	UPDATED
Data mode	VFAINT	VFAINT	Number of optional ACIS chips dropped	0	0
Observation mode	POINTING	POINTING	On-chip summing requested	N	N
[deg] Pointing RA	150.728578	150.7169637550454	Subarray requested	NONE	NONE
[deg] Pointing Dec	32.886417	32.86080399959656	Alternating exposures requested	N	N
[deg] Pointing Roll	218.658890	218.8738692184039	[s] Primary exposure time	0.000000	3.1
[mm] SIM focus pos	-0.782348	-0.7809083437167272			
[mm] SIM defocus	0	0.001439871863259334			
[mm] SIM translation stage pos	-225.840463	-225.8433433320239			
[mm] SIM translation stage offset	-7.752	-7.749109670905796			
[s] Observation start time (MET)	226965994.184000	226965025.94752			
Observation start date	2005-03-11T22:05:30	2005-03-11T21:50:25			
[s] Observation end time (MET)	226985994.184000	226986731.3485			
Observation end date	2005-03-12T03:38:50	2005-03-12T03:52:11			
Read mode	TIMED	TIMED			

## 2.3 Aspect

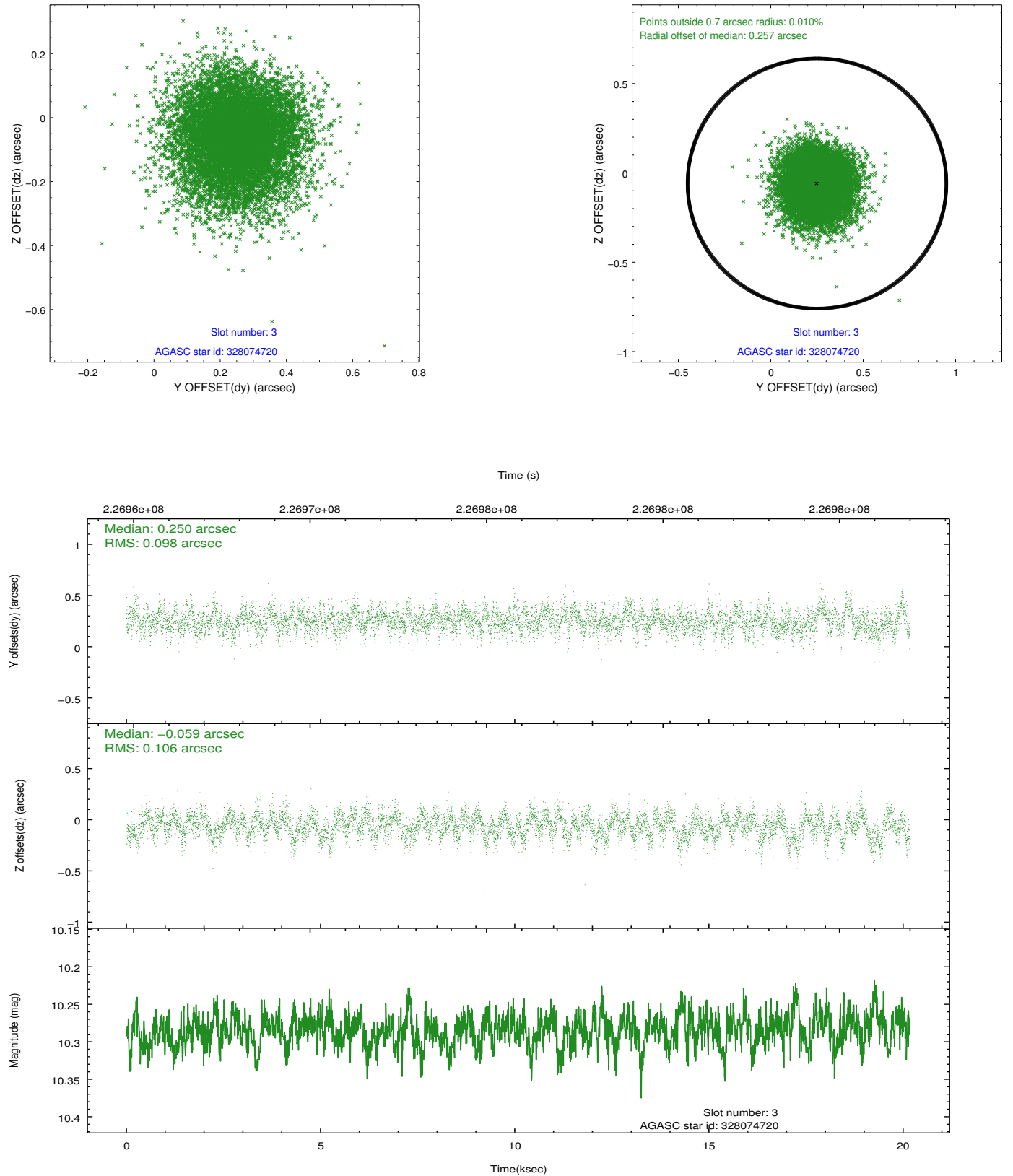


### Slot Statistics

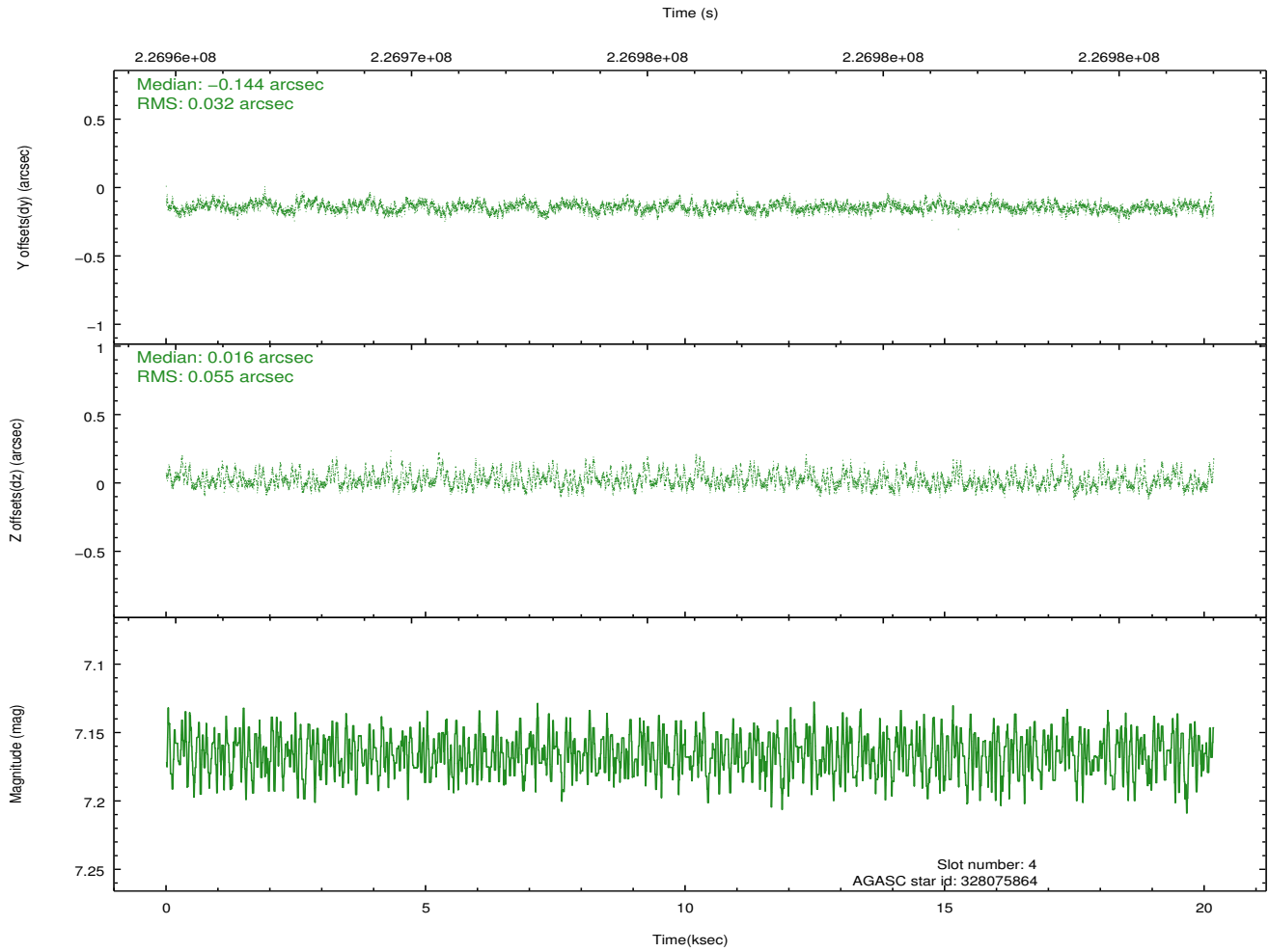
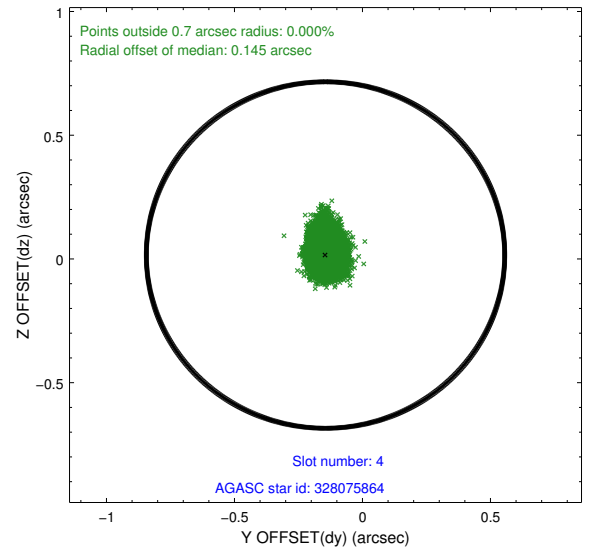
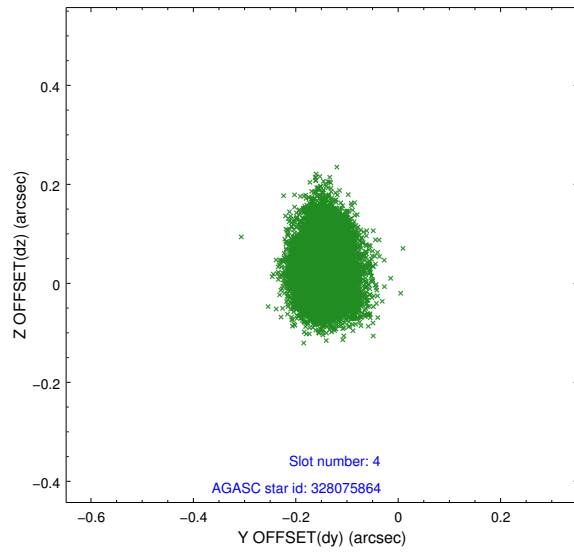
slot	status	id	mag	n_pts	med_dy	med_dz	dr1	dr2	ra	dec	mean_y	mean_z
0	FID	ACIS-I-1	7.23	4923	0.099	-0.094	0.013	0.022	0.000000	0.000000	933.27	-992.67
1	FID	ACIS-I-5	7.22	4923	-0.231	0.085	0.014	0.024	0.000000	0.000000	-1815.06	904.87
2	FID	ACIS-I-6	7.25	4922	0.040	0.078	0.009	0.014	0.000000	0.000000	398.56	1549.58
3	GUIDE	328074720	10.29	9802	0.250	-0.059	0.155	0.247	150.340678	32.315122	2205.47	867.18
4	GUIDE	328075864	7.17	9845	-0.144	0.016	0.066	0.114	151.066991	32.452445	172.59	1861.06
5	GUIDE	328467856	10.17	9765	0.043	0.011	0.122	0.198	150.189196	32.850934	1351.36	-922.21
6	GUIDE	328468552	8.83	9840	-0.002	0.034	0.081	0.130	150.523277	33.036656	146.18	-809.85
7	GUIDE	328470232	8.38	9841	-0.146	-0.004	0.058	0.094	151.315325	33.229085	-2153.32	136.53

## 2.4 Star Slots

### 2.4.1 Slot 3

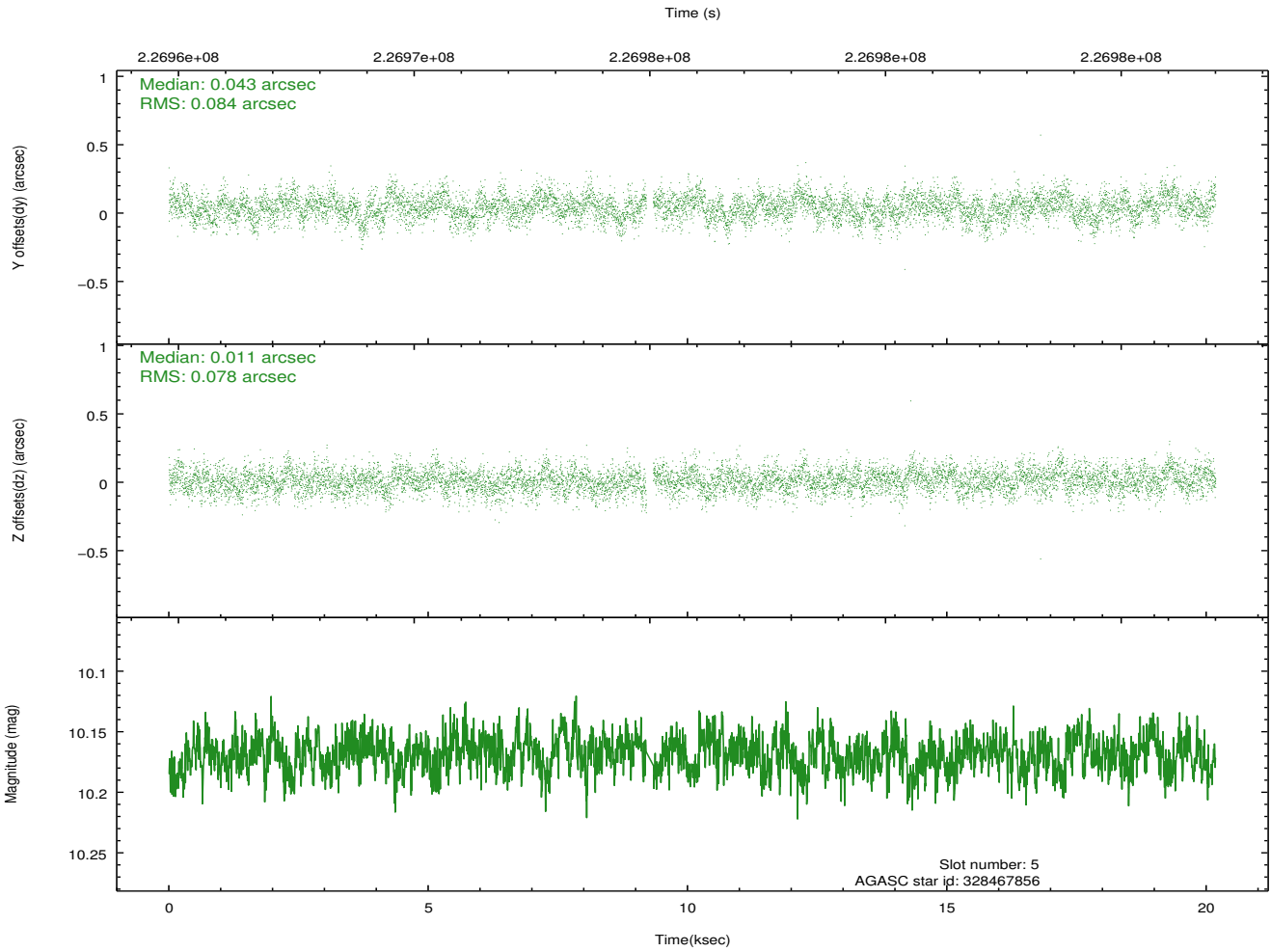
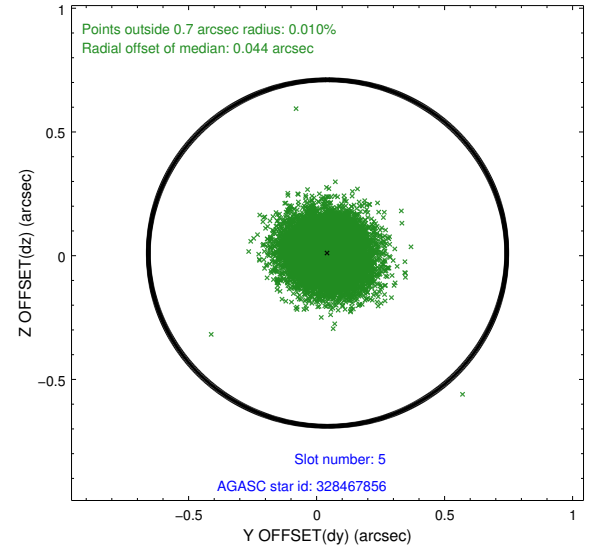
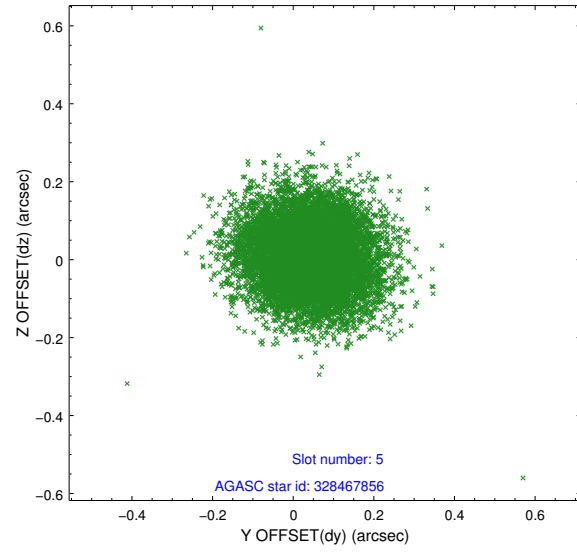


### 2.4.2 Slot 4

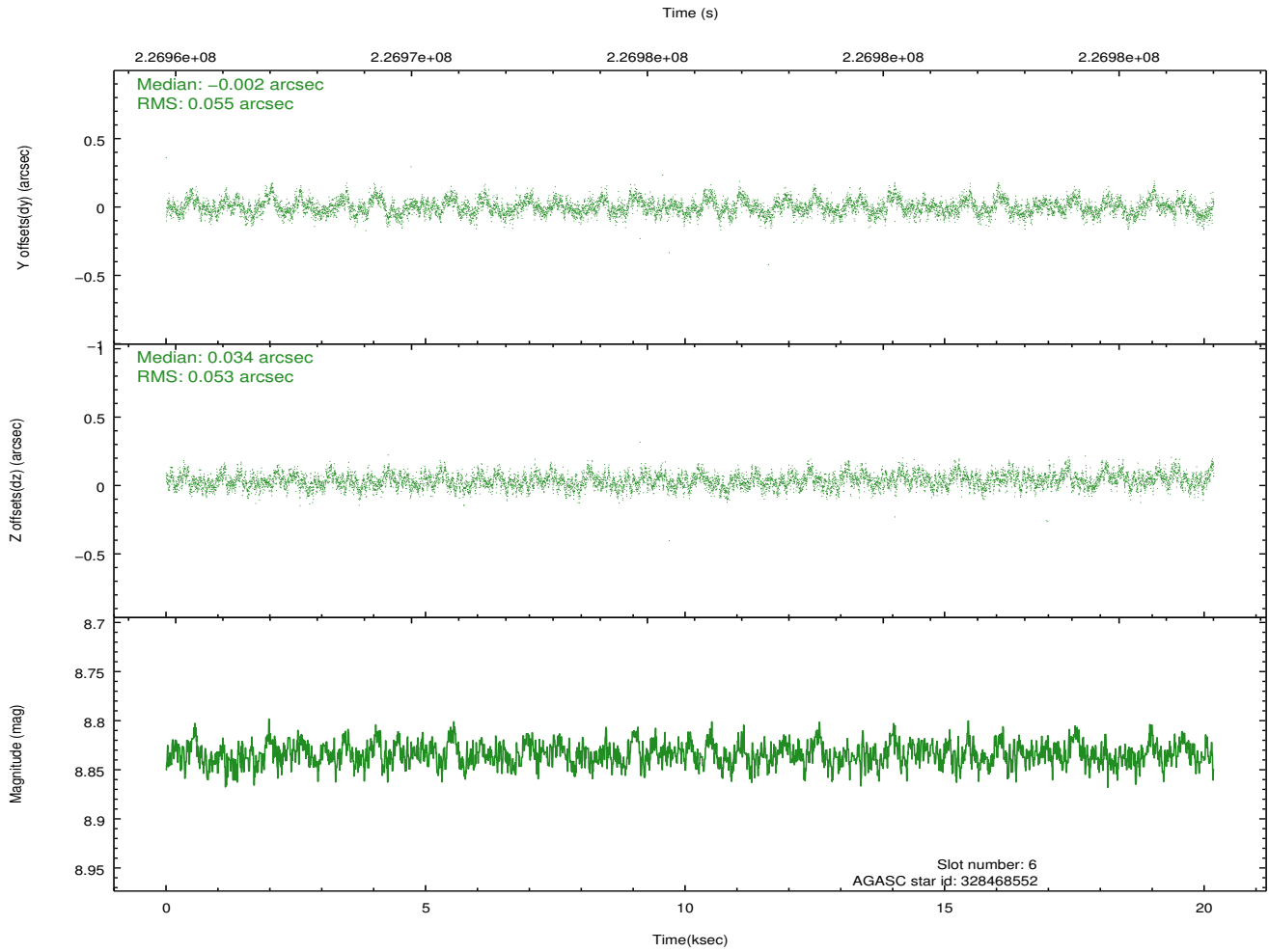
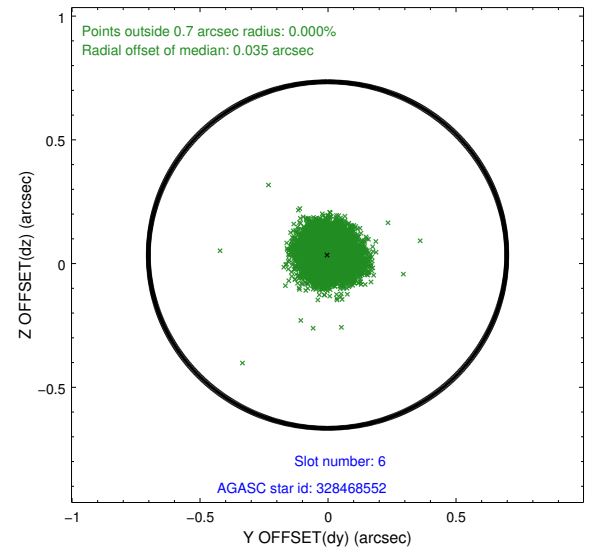
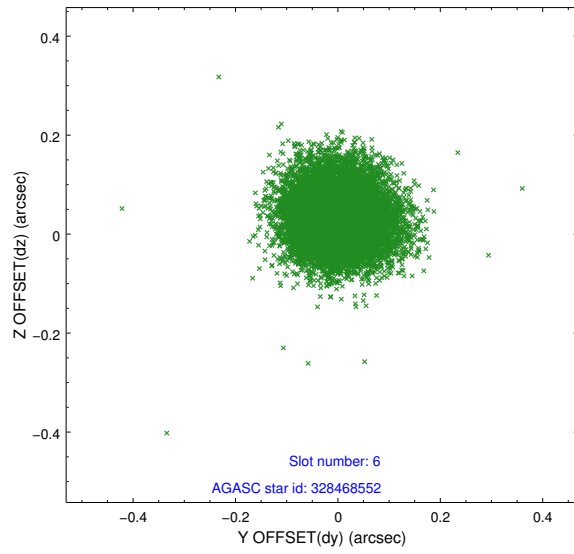




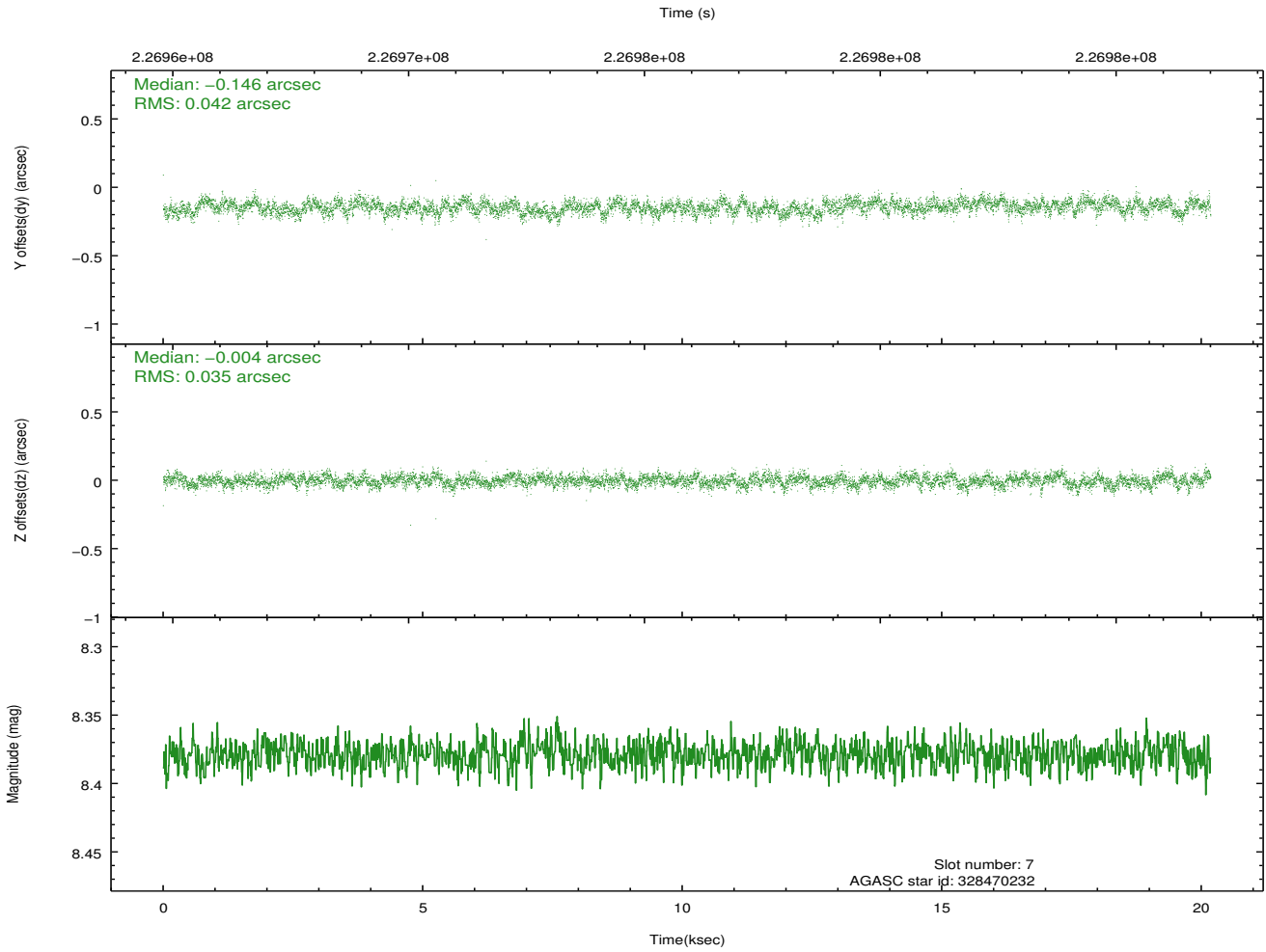
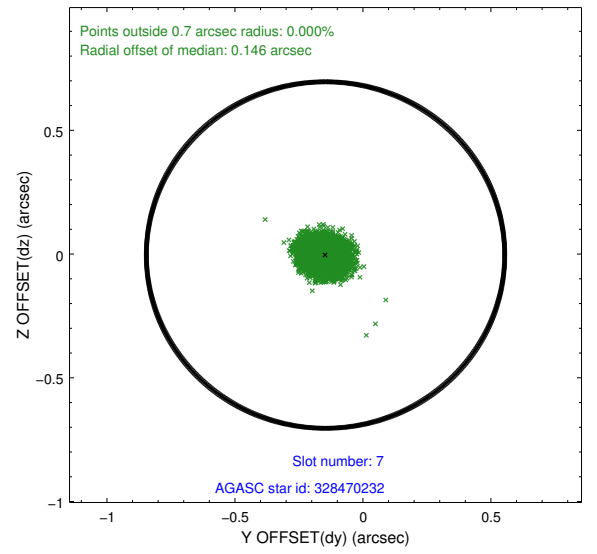
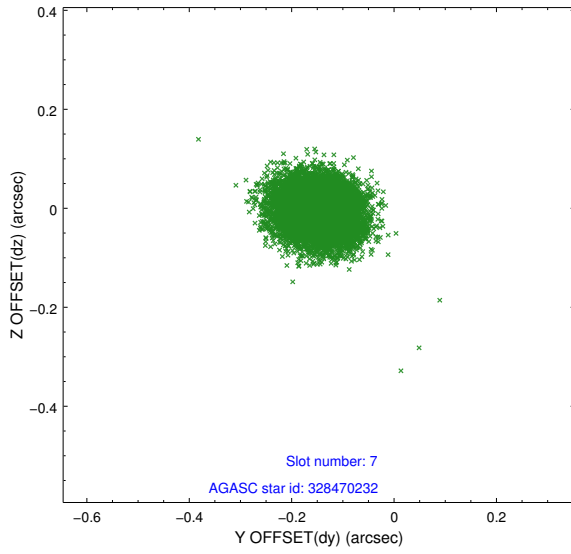
### 2.4.3 Slot 5



## 2.4.4 Slot 6

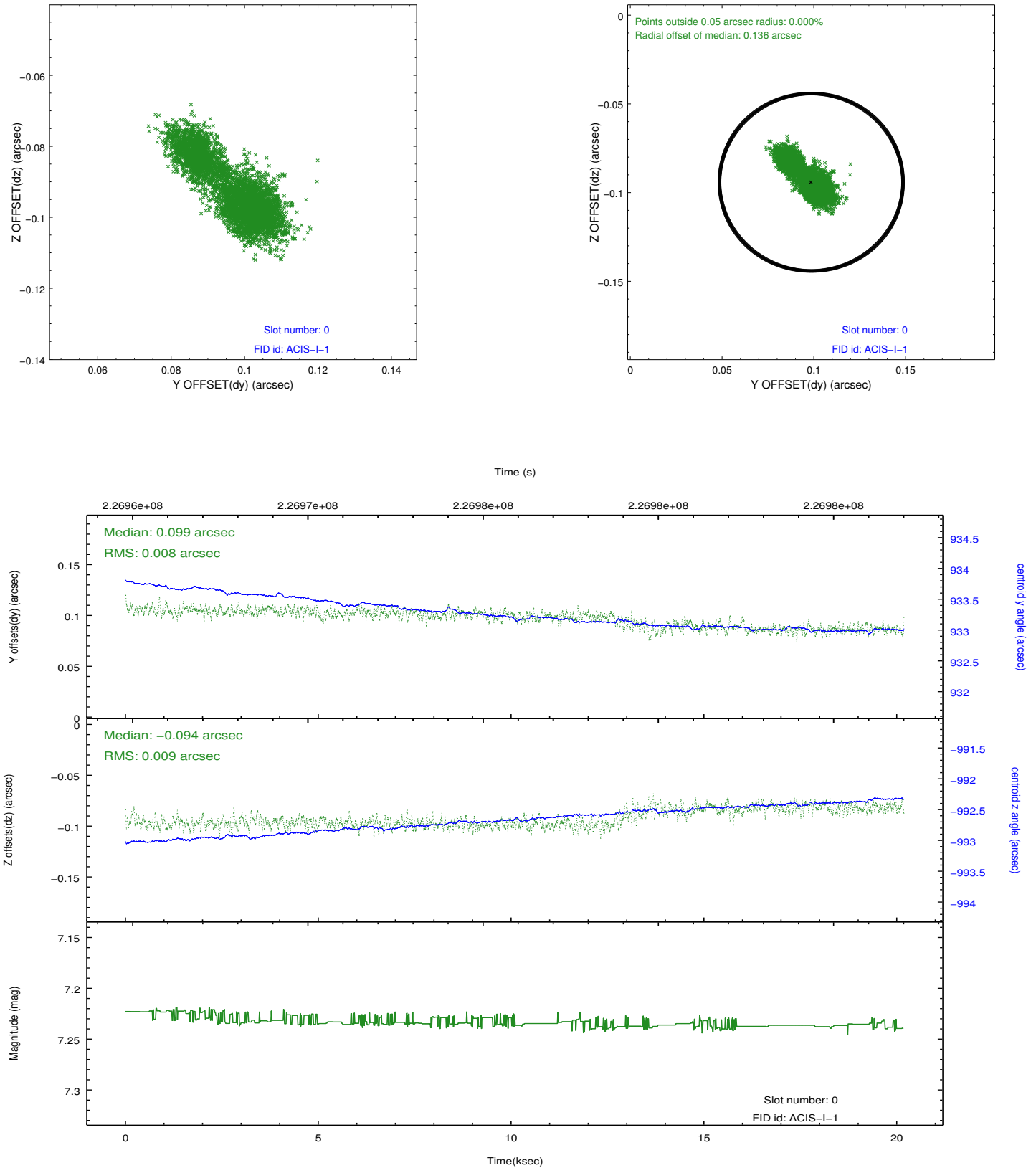


## 2.4.5 Slot 7

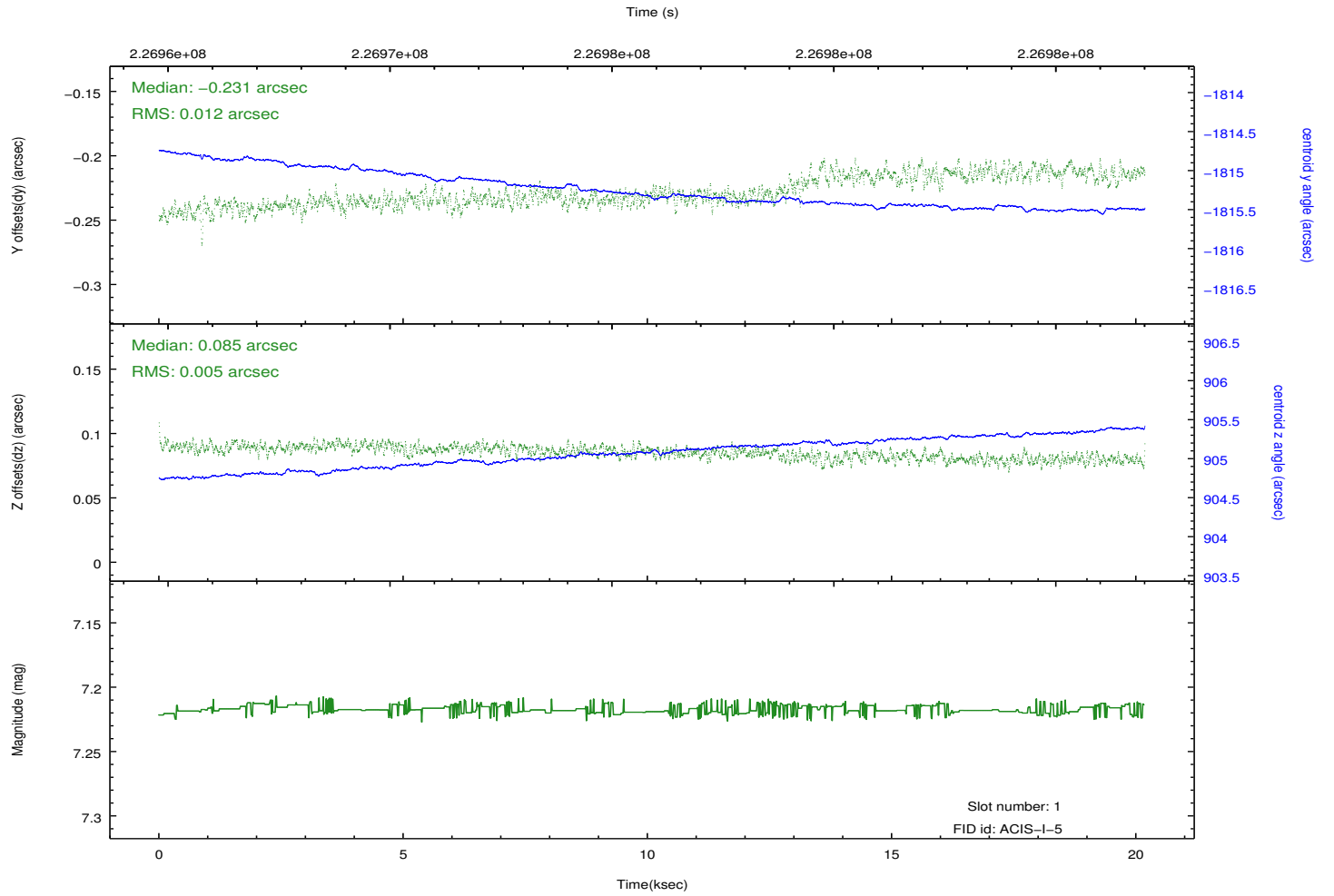
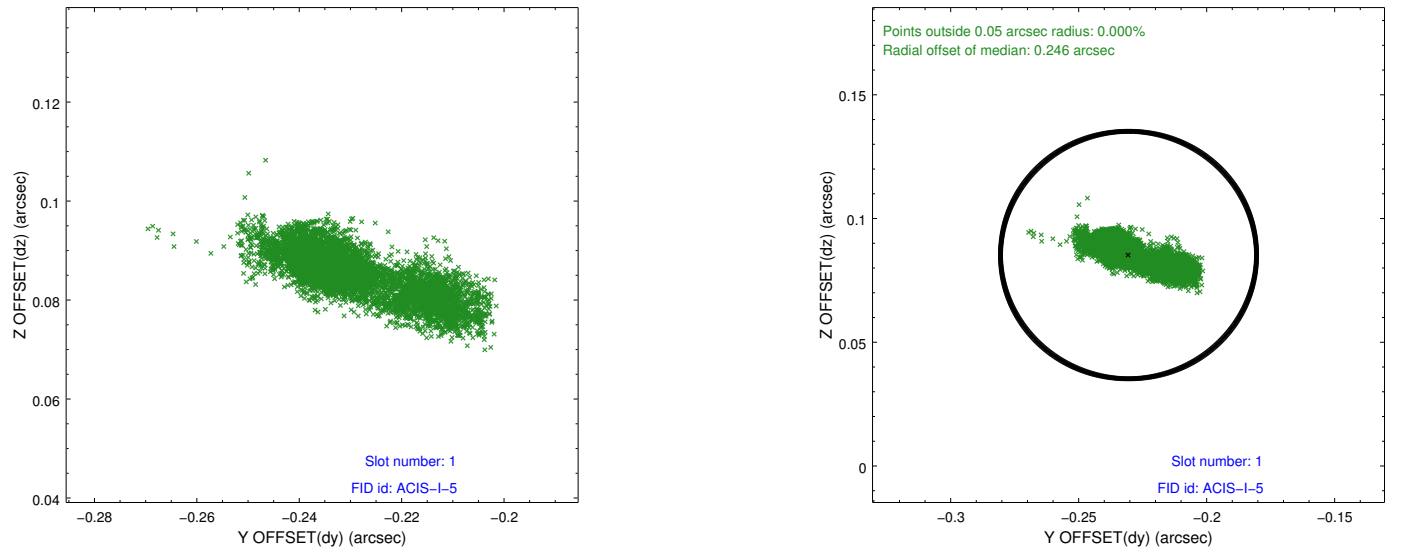


## 2.5 FID Slots

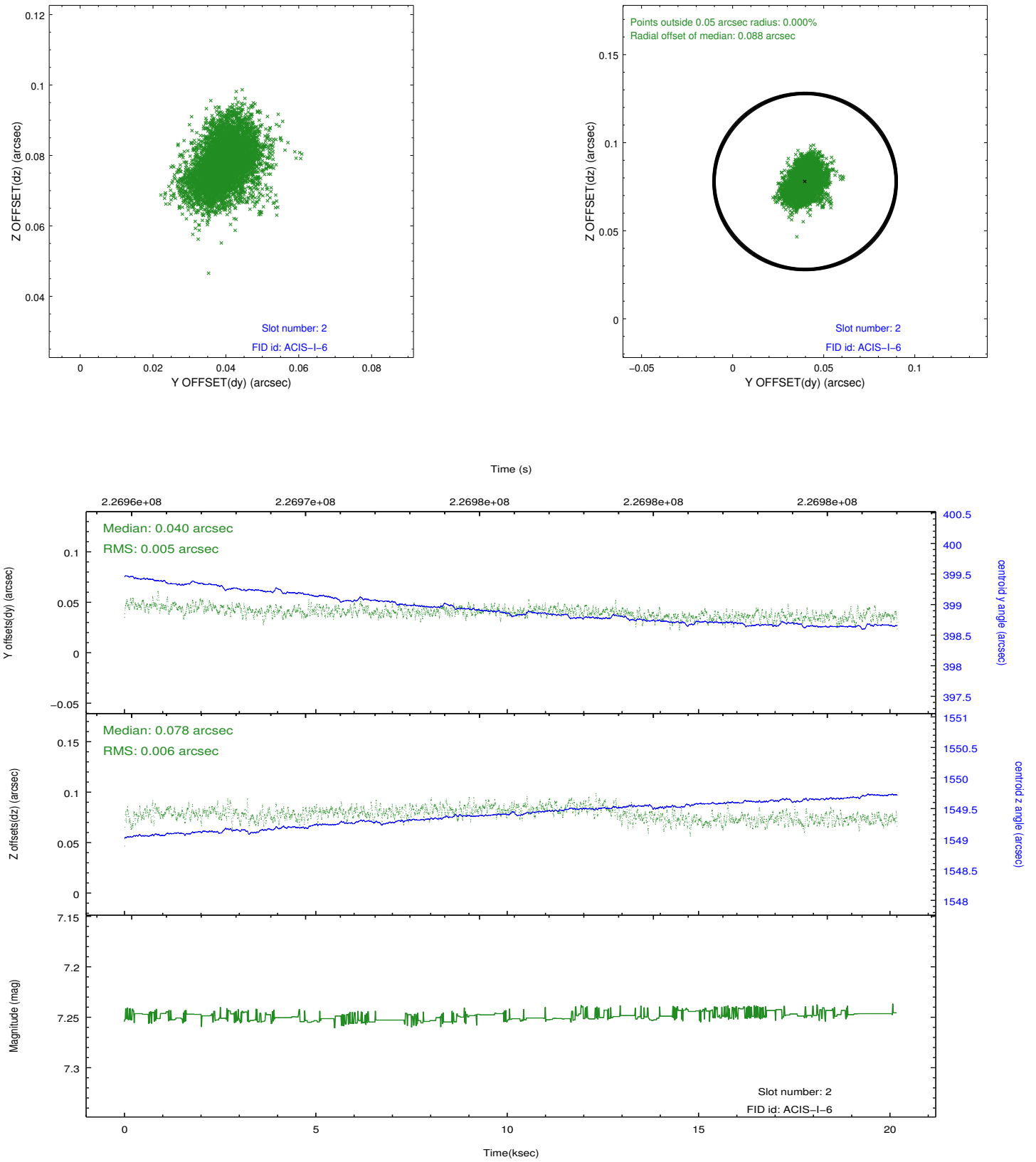
### 2.5.1 Slot 0



## 2.5.2 Slot 1



### 2.5.3 Slot 2



## A Summary

### A.1 Status

V&V Scientist	Jen Lauer
V&V Date (YYYY-MM-DD)	2013.01.11
V&V Edition	1
V&V Disposition and Status	OK
V&V Charge Time	20.12197

### A.2 Comments