

V&V Reference Report

L2 ASCDS Version : 8.4.4

Observation 57446 - L2 Version 2
Chandra X-Ray Center

L2 Processing Date : May 26 2012

Contents

1	Front	2
2	OBI	3
2.1	OBI	3
2.1.1	Images	3
2.1.2	Bias	3
2.1.3	Parameters	4
2.1.4	Events	4
2.2	Compared Parameters	5
2.3	Star Slots	6
2.4	FID Slots	6
A	Summary	7
A.1	Status	7
A.2	Comments	7

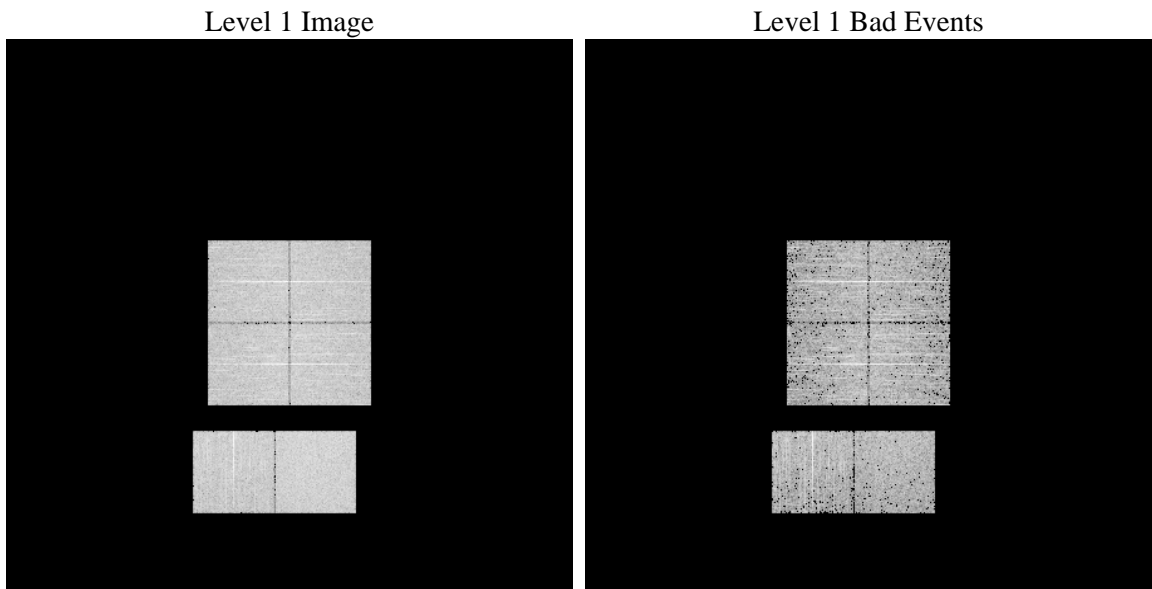
1 Front

seq_num	 	Sequence number
obs_id	57446	Observation id
title	ACIS-012367 diagnostics	Proposal title
observer	CHANDRA engineering request/realtime commanding	Principal investig
object	 	Source name
dtcycle	0	
cycle	P	events from which exps? Prim/Second/Both
ra_targ	0.0	Observer's specified target RA [deg]
dec_targ	0.0	Observer's specified target Dec [deg]
ra_nom	223.63803376626	Nominal RA [deg]
dec_nom	-62.989342369794	Nominal Dec [deg]
roll_nom	125.29401085235	Nominal Roll [deg]
revision	2	Processing version of data
ontime	2793.7421184182	Sum of GTIs [s]
livetime	2758.3660735253	Livetime [s]
ontime0	2796.4535776973	Sum of GTIs [s]
ontime1	2796.412537694	Sum of GTIs [s]
ontime2	2796.3714976907	Sum of GTIs [s]
ontime3	2793.7420985103	Sum of GTIs [s]
ontime6	2796.3304576874	Sum of GTIs [s]
ontime7	2793.7421184182	Sum of GTIs [s]
l2events	180434	Number of level 2 events

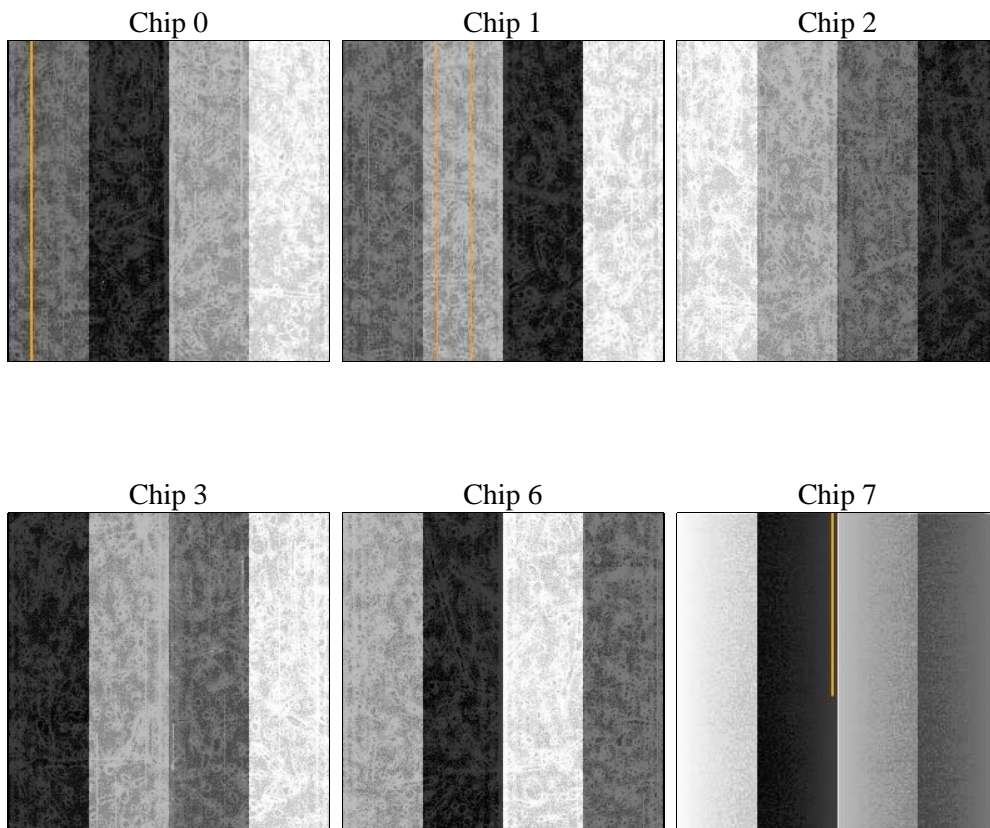
2 OBI

2.1 OBI

2.1.1 Images



2.1.2 Bias



2.1.3 Parameters

obi_num	0	Obi number	sched_exp_time	0.0	[s] Scheduled observation exposure time
ascdsver	8.4.4	Processing system revision	ontime	2793.7421184182	Sum of GTIs [s]
caldsver	4.4.9	 	ontime0	2796.4535776973	Sum of GTIs [s]
date	2012-05-26T06:39:15	Date and time of file creation	ontime1	2796.412537694	Sum of GTIs [s]
revision	2	Processing version of data	ontime2	2796.3714976907	Sum of GTIs [s]
			ontime3	2793.7420985103	Sum of GTIs [s]
			ontime6	2796.3304576874	Sum of GTIs [s]
			ontime7	2793.7421184182	Sum of GTIs [s]
			l1events	335078	Number of level 1 events

2.1.4 Events

	ccd 0	ccd 1	ccd 2	ccd 3	ccd 6	ccd 7		ccd 0	ccd 1	ccd 2	ccd 3	ccd 6	ccd 7
level 1 events	53056	52013	53986	55344	56471	64208	grade 0 events	15917	15528	16237	15814	16316	8200
rejected events	23481	22563	24281	26145	25673	22458		30%	29%	30%	28%	28%	12%
rejected %	44%	43%	44%	47%	45%	34%	grade 1 events	102	97	133	137	89	48
								0%	0%	0%	0%	0%	0%
							grade 2 events	5255	5405	5152	5201	5419	9088
								9%	10%	9%	9%	9%	14%
							grade 3 events	1987	1958	2067	1949	1983	4018
								3%	3%	3%	3%	3%	6%
							grade 4 events	1956	1990	1990	1911	2007	3748
								3%	3%	3%	3%	3%	5%
							grade 5 events	1323	1372	1262	1553	1421	3795
								2%	2%	2%	2%	2%	5%
							grade 6 events	4460	4569	4259	4324	5073	16696
								8%	8%	7%	7%	8%	26%
							grade 7 events	22056	21094	22886	24455	24163	18615
								41%	40%	42%	44%	42%	28%

2.2 Compared Parameters

Parameter	Planned	Actual	Parameter	Planned	Actual
Instrument	ACIS	ACIS	Obspar format version number	7	7
Detector	ACIS-012367	ACIS-012367	Obspar file type	PREDICTED	ACTUAL
Grating	NONE	NONE	Obspar update status	NONE	UPDATED
Data mode	FAINT	FAINT	Number of optional ACIS chips dropped	0	0
Observation mode	SECONDARY	SECONDARY	On-chip summing requested	N	N
[deg] Pointing RA	0	223.6380337662565	Subarray requested	NONE	NONE
[deg] Pointing Dec	0	-62.98934236979396	Alternating exposures requested	N	N
[deg] Pointing Roll	0.0	125.2940108523456	[s] Primary exposure time	3.2	3.2
[mm] SIM focus pos	-1.429586	-0.6828225247311905			
[mm] SIM defocus	0.1037507710433287	0.8505141146731063			
[mm] SIM translation stage pos	250.455976	250.466033080201			
[mm] SIM translation stage offset	0	-0.01005468664627074			
[s] Observation start time (MET)	345892323.010234	345892321.98524			
Observation start date	2008-12-17T09:12:03	2008-12-17T09:12:01			
[s] Observation end time (MET)	345898216.760526	345898215.73553			
Observation end date	2008-12-17T10:50:17	2008-12-17T10:50:15			
Read mode	TIMED	TIMED			

2.3 Star Slots

2.4 FID Slots

A Summary

A.1 Status

V&V Scientist	Jen Lauer
V&V Date (YYYY-MM-DD)	2012.06.01
V&V Edition	1
V&V Disposition and Status	OK
V&V Charge Time	2.7937421184182

A.2 Comments