

V&V Reference Report

L2 ASCDS Version : 8.4.4

Observation 57216 - L2 Version 2
Chandra X-Ray Center

L2 Processing Date : Jun 3 2012

Contents

1	Front	2
2	OBI	3
2.1	OBI	3
2.1.1	Images	3
2.1.2	Bias	3
2.1.3	Parameters	4
2.1.4	Events	4
2.2	Compared Parameters	5
2.3	Star Slots	6
2.4	FID Slots	6
A	Summary	7
A.1	Status	7
A.2	Comments	7

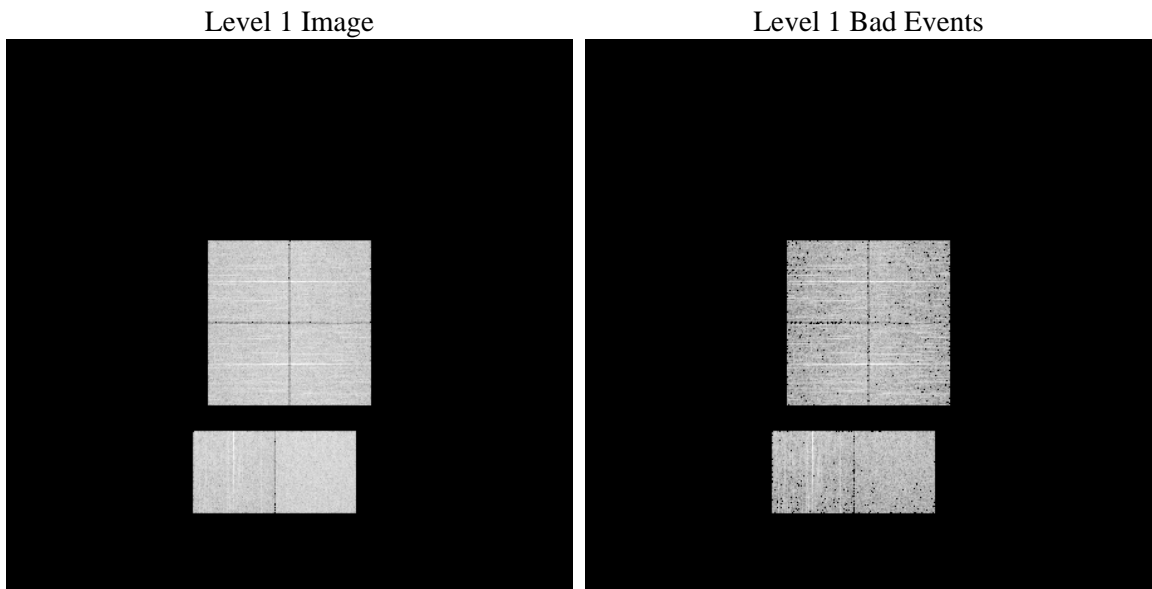
1 Front

seq_num	 	Sequence number
obs_id	57216	Observation id
title	ACIS-012367 diagnostics	Proposal title
observer	CHANDRA engineering request/realtime commanding	Principal investig
object	 	Source name
dtcycle	0	
cycle	P	events from which exps? Prim/Second/Both
ra_targ	0.0	Observer's specified target RA [deg]
dec_targ	0.0	Observer's specified target Dec [deg]
ra_nom	192.71204177342	Nominal RA [deg]
dec_nom	-14.973761273287	Nominal Dec [deg]
roll_nom	33.246299394773	Nominal Roll [deg]
revision	2	Processing version of data
ontime	3273.4117229581	Sum of GTIs [s]
livetime	3231.9618127101	Livetime [s]
ontime0	3273.4117229581	Sum of GTIs [s]
ontime1	3273.4117229581	Sum of GTIs [s]
ontime2	3273.3729527593	Sum of GTIs [s]
ontime3	3273.4117229581	Sum of GTIs [s]
ontime6	3273.331912756	Sum of GTIs [s]
ontime7	3273.4117229581	Sum of GTIs [s]
l2events	199361	Number of level 2 events

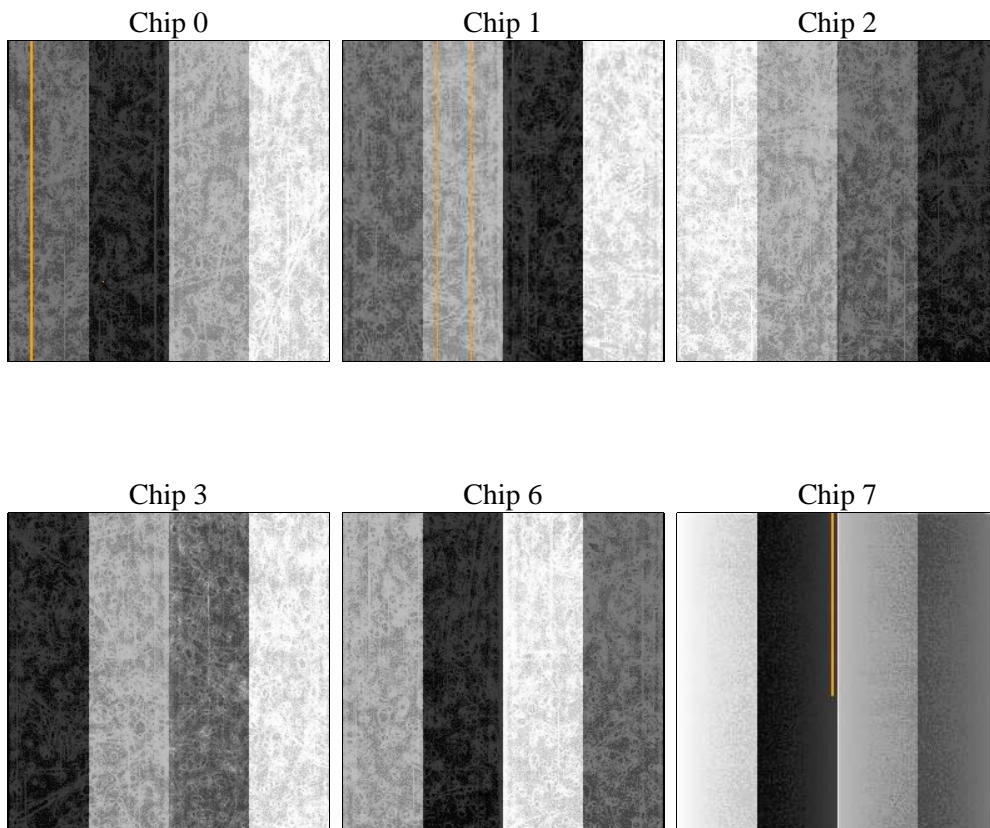
2 OBI

2.1 OBI

2.1.1 Images



2.1.2 Bias



2.1.3 Parameters

obi_num	0	Obi number	sched_exp_time	0.0	[s] Scheduled observation exposure time
ascdsver	8.4.4	Processing system revision	ontime	3273.4117229581	Sum of GTIs [s]
caldsver	4.4.9	 	ontime0	3273.4117229581	Sum of GTIs [s]
date	2012-06-03T08:02:10	Date and time of file creation	ontime1	3273.4117229581	Sum of GTIs [s]
revision	2	Processing version of data	ontime2	3273.3729527593	Sum of GTIs [s]
			ontime3	3273.4117229581	Sum of GTIs [s]
			ontime6	3273.331912756	Sum of GTIs [s]
			ontime7	3273.4117229581	Sum of GTIs [s]
			l1events	386864	Number of level 1 events

2.1.4 Events

	ccd 0	ccd 1	ccd 2	ccd 3	ccd 6	ccd 7		ccd 0	ccd 1	ccd 2	ccd 3	ccd 6	ccd 7
level 1 events	61114	59890	63031	63869	63368	75592	grade 0 events	17379	16920	17590	17866	17684	9204
rejected events	28708	27718	30745	31432	29812	27625		28%	28%	27%	27%	27%	12%
rejected %	46%	46%	48%	49%	47%	36%	grade 1 events	119	109	149	157	118	47
								0%	0%	0%	0%	0%	0%
							grade 2 events	5880	6008	5660	5567	5949	10339
								9%	10%	8%	8%	9%	13%
							grade 3 events	2192	2092	2192	2185	2185	4598
								3%	3%	3%	3%	3%	6%
							grade 4 events	2119	2195	2197	2126	2230	4511
								3%	3%	3%	3%	3%	5%
							grade 5 events	1591	1816	1522	1765	1700	4654
								2%	3%	2%	2%	2%	6%
							grade 6 events	4836	4957	4647	4693	5508	19315
								7%	8%	7%	7%	8%	25%
							grade 7 events	26998	25793	29074	29510	27994	22924
								44%	43%	46%	46%	44%	30%

2.2 Compared Parameters

Parameter	Planned	Actual	Parameter	Planned	Actual
Instrument	ACIS	ACIS	Obspar format version number	7	7
Detector	ACIS-012367	ACIS-012367	Obspar file type	PREDICTED	ACTUAL
Grating	NONE	NONE	Obspar update status	NONE	UPDATED
Data mode	FAINT	FAINT	Number of optional ACIS chips dropped	0	0
Observation mode	SECONDARY	SECONDARY	On-chip summing requested	N	N
[deg] Pointing RA	0	192.7120417734157	Subarray requested	NONE	NONE
[deg] Pointing Dec	0	-14.973761273287	Alternating exposures requested	N	N
[deg] Pointing Roll	0.0	33.24629939477261	[s] Primary exposure time	3.2	3.2
[mm] SIM focus pos	-1.429586	-0.7809083437167272			
[mm] SIM defocus	0.1037507710433287	0.7524282956875696			
[mm] SIM translation stage pos	250.455976	250.466033080201			
[mm] SIM translation stage offset	0	-0.01005468664627074			
[s] Observation start time (MET)	354346197.479189	354346196.4542			
Observation start date	2009-03-25T05:29:57	2009-03-25T05:29:56			
[s] Observation end time (MET)	354366693.380207	354366692.35522			
Observation end date	2009-03-25T11:11:33	2009-03-25T11:11:32			
Read mode	TIMED	TIMED			

2.3 Star Slots

2.4 FID Slots

A Summary

A.1 Status

V&V Scientist	Jen Lauer
V&V Date (YYYY-MM-DD)	2012.06.07
V&V Edition	1
V&V Disposition and Status	OK
V&V Charge Time	3.2734117229581

A.2 Comments