

# V&V Reference Report

## L2 ASCDS Version : 8.4.5

Observation 56886 - L2 Version 2  
Chandra X-Ray Center

L2 Processing Date : Jun 12 2012

## Contents

<b>1</b>	<b>Front</b>	<b>2</b>
<b>2</b>	<b>OBI</b>	<b>3</b>
2.1	OBI . . . . .	3
2.1.1	Images . . . . .	3
2.1.2	Bias . . . . .	3
2.1.3	Parameters . . . . .	4
2.1.4	Events . . . . .	4
2.2	Compared Parameters . . . . .	5
2.3	Star Slots . . . . .	6
2.4	FID Slots . . . . .	6
<b>A</b>	<b>Summary</b>	<b>7</b>
A.1	Status . . . . .	7
A.2	Comments . . . . .	7

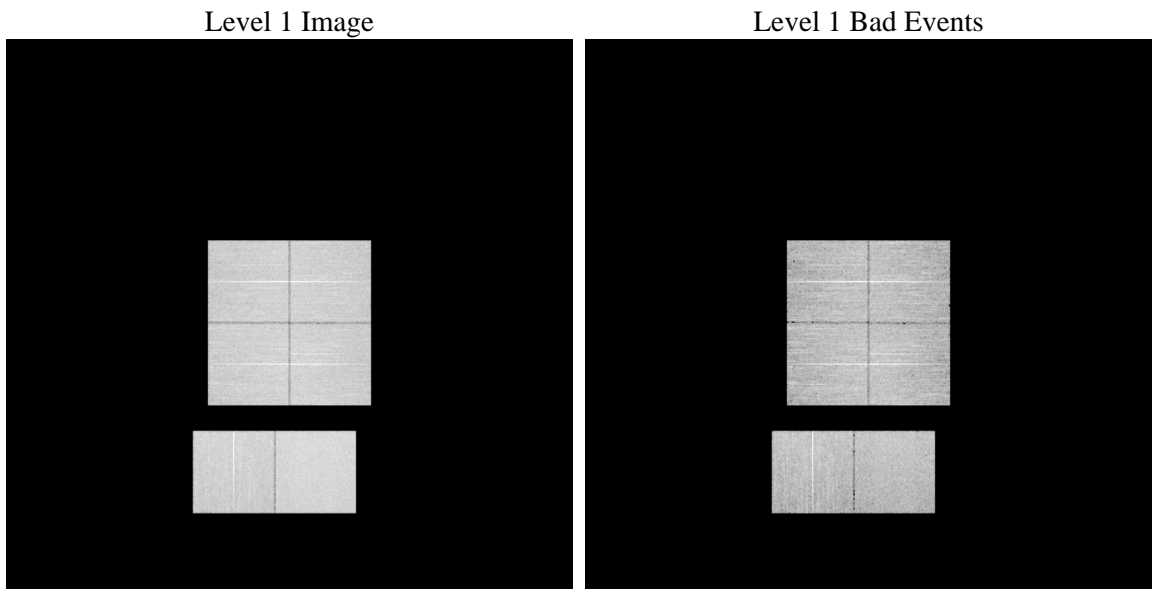
# 1 Front

seq_num	&#160	Sequence number
obs_id	56886	Observation id
title	ACIS-012367 diagnostics	Proposal title
observer	CHANDRA engineering request/realtime commanding	Principal investig
object	&#160	Source name
dtcycle	0	&#160
cycle	P	events from which exps? Prim/Second/Both
ra_targ	0.0	Observer's specified target RA [deg]
dec_targ	0.0	Observer's specified target Dec [deg]
ra_nom	340.55370986465	Nominal RA [deg]
dec_nom	-56.909482235681	Nominal Dec [deg]
roll_nom	18.509367645483	Nominal Roll [deg]
revision	2	Processing version of data
ontime	8185.5999695659	Sum of GTIs [s]
livetime	8081.9489739747	Livetime [s]
ontime0	8185.5756561756	Sum of GTIs [s]
ontime1	8185.5346161723	Sum of GTIs [s]
ontime2	8185.493576169	Sum of GTIs [s]
ontime3	8185.5999695659	Sum of GTIs [s]
ontime6	8185.4525361657	Sum of GTIs [s]
ontime7	8185.5999695659	Sum of GTIs [s]
l2events	461001	Number of level 2 events

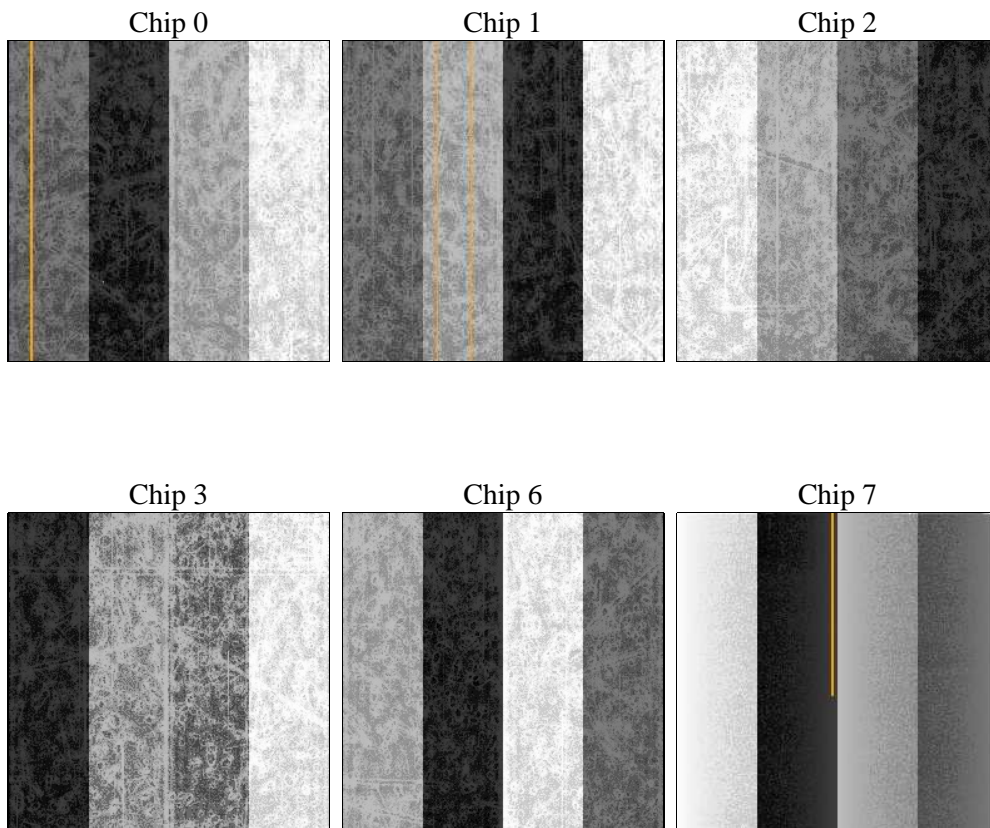
## 2 OBI

### 2.1 OBI

#### 2.1.1 Images



#### 2.1.2 Bias



### 2.1.3 Parameters

obi_num	1	Obi number	sched_exp_time	0.0	[s] Scheduled observation exposure time
ascdsver	8.4.5	Processing system revision	ontime	8185.5999695659	Sum of GTIs [s]
caldsver	4.4.10	&#160	ontime0	8185.5756561756	Sum of GTIs [s]
date	2012-06-12T02:57:00	Date and time of file creation	ontime1	8185.5346161723	Sum of GTIs [s]
revision	2	Processing version of data	ontime2	8185.493576169	Sum of GTIs [s]
			ontime3	8185.5999695659	Sum of GTIs [s]
			ontime6	8185.4525361657	Sum of GTIs [s]
			ontime7	8185.5999695659	Sum of GTIs [s]
			l1events	943050	Number of level 1 events

### 2.1.4 Events

	ccd 0	ccd 1	ccd 2	ccd 3	ccd 6	ccd 7		ccd 0	ccd 1	ccd 2	ccd 3	ccd 6	ccd 7
level 1 events	147701	147308	153597	153112	155161	186171	grade 0 events	39451	39540	40556	40616	40457	20810
rejected events	73865	72274	79324	78875	78408	72791		26%	26%	26%	26%	26%	11%
rejected %	50%	49%	51%	51%	50%	39%	grade 1 events	295	242	349	336	272	181
								0%	0%	0%	0%	0%	0%
							grade 2 events	13584	14341	13074	13114	13771	24736
								9%	9%	8%	8%	8%	13%
							grade 3 events	5109	4978	5116	5095	5084	10748
								3%	3%	3%	3%	3%	5%
							grade 4 events	4948	5094	5106	5154	5003	10448
								3%	3%	3%	3%	3%	5%
							grade 5 events	4223	4403	3938	4571	4441	11647
								2%	2%	2%	2%	2%	6%
							grade 6 events	11210	11576	10930	10746	12933	47397
								7%	7%	7%	7%	8%	25%
							grade 7 events	68881	67134	74528	73480	73200	60204
								46%	45%	48%	47%	47%	32%

## 2.2 Compared Parameters

Parameter	Planned	Actual
Instrument	ACIS	ACIS
Detector	ACIS-012367	ACIS-012367
Grating	NONE	NONE
Data mode	FAINT	FAINT
Observation mode	SECONDARY	SECONDARY
[deg] Pointing RA	0	340.5537098646458
[deg] Pointing Dec	0	-56.90948223568083
[deg] Pointing Roll	0.0	18.50936764548265
[mm] SIM focus pos	-1.0388663562	-1.0388663562
[mm] SIM defocus	0.4944702069557434	0.4944702069557434
[mm] SIM translation stage pos	250.4660330802	250.4660330802
[mm] SIM translation stage offset	-0.01005726120527584	-0.01005726120527584
[s] Observation start time (MET)	366910178.656186	366910178.656186
Observation start date	2009-08-17T15:29:39	2009-08-17T15:29:38
[s] Observation end time (MET)	366920159.731595	366920159.731595
Observation end date	2009-08-17T18:16:00	2009-08-17T18:15:59
Read mode	TIMED	TIMED

Parameter	Planned	Actual
Obspar format version number	7	7
Obspar file type	PREDICTED	ACTUAL
Obspar update status	OVERRIDE	OVERRIDE
Number of optional ACIS chips dropped	0	0
On-chip summing requested	N	N
Subarray requested	NONE	NONE
Alternating exposures requested	N	N
[s] Primary exposure time	3.2	3.2

## **2.3 Star Slots**

## **2.4 FID Slots**

## A Summary

### A.1 Status

V&V Scientist	Jen Lauer
V&V Date (YYYY-MM-DD)	2012.06.14
V&V Edition	1
V&V Disposition and Status	OK
V&V Charge Time	8.1855999695659

### A.2 Comments