

V&V Reference Report

L2 ASCDS Version : 7.6.7

Observation 5616 - L2 Version 004
Chandra X-Ray Center

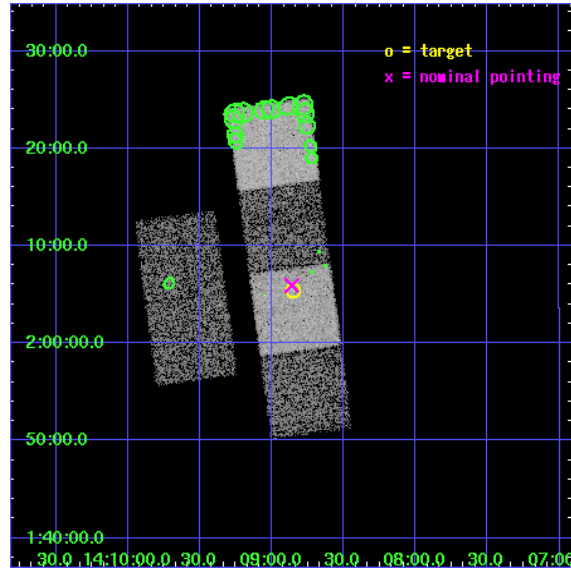
L2 Processing Date : Mar 15 2006

Contents

1	Front	2
2	OBI	3
2.1	OBI	3
2.1.1	Images	3
2.1.2	Bias	3
2.1.3	Parameters	4
2.1.4	Events	4
2.2	Compared Parameters	5
2.3	Aspect	6
2.4	Star Slots	9
2.4.1	Slot 3	9
2.4.2	Slot 4	10
2.4.3	Slot 6	11
2.4.4	Slot 7	12
2.5	FID Slots	13
2.5.1	Slot 0	13
2.5.2	Slot 1	14
2.5.3	Slot 2	15
3	Point Sources	16
A	Summary	17
A.1	Status	17
A.2	Comments	17

1 Front

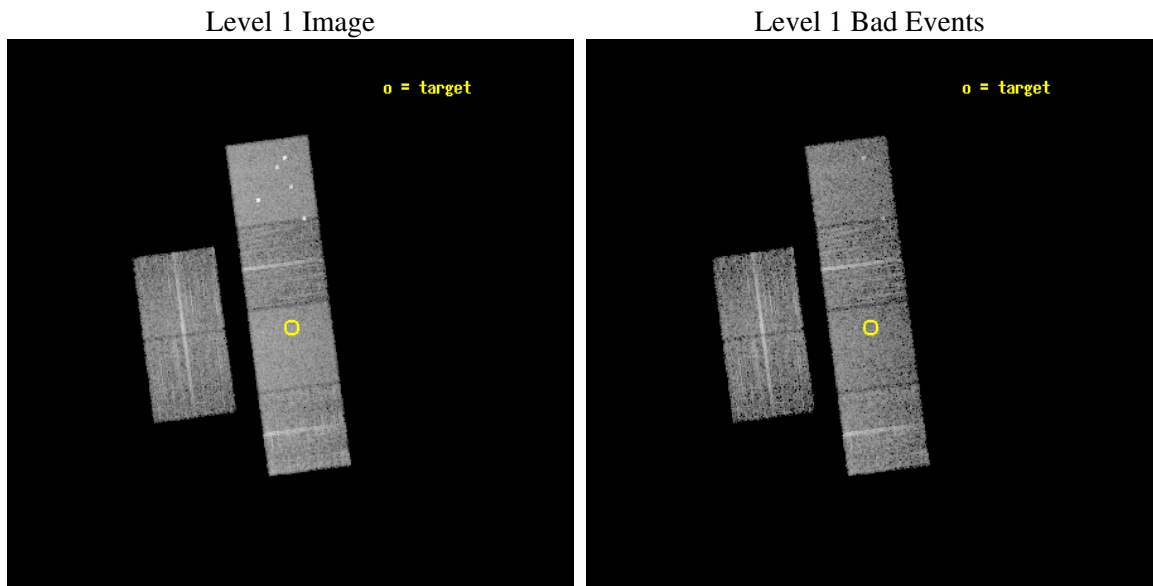
seq_num	701039
obs_id	5616
title	A Chandra Survey of the Most Distant Quasars: X-raying the First Massive Black Holes
observer	Prof. William Brandt
object	SDSS J1408+0205
dtcycle	0
cycle	P
ra_targ	212.212083
dec_targ	2.089611
ra_nom	212.21500195689
dec_nom	2.0988478586434
roll_nom	82.38264970888
revision	4
ontime	6076.7999773622
livetime	5999.8518770391
ontime2	6076.7999773622
ontime3	6076.7999773622
ontime5	6076.7999773622
ontime6	6076.7999773622
ontime7	6076.7999773622
ontime8	6076.7999773622
l2events	69118



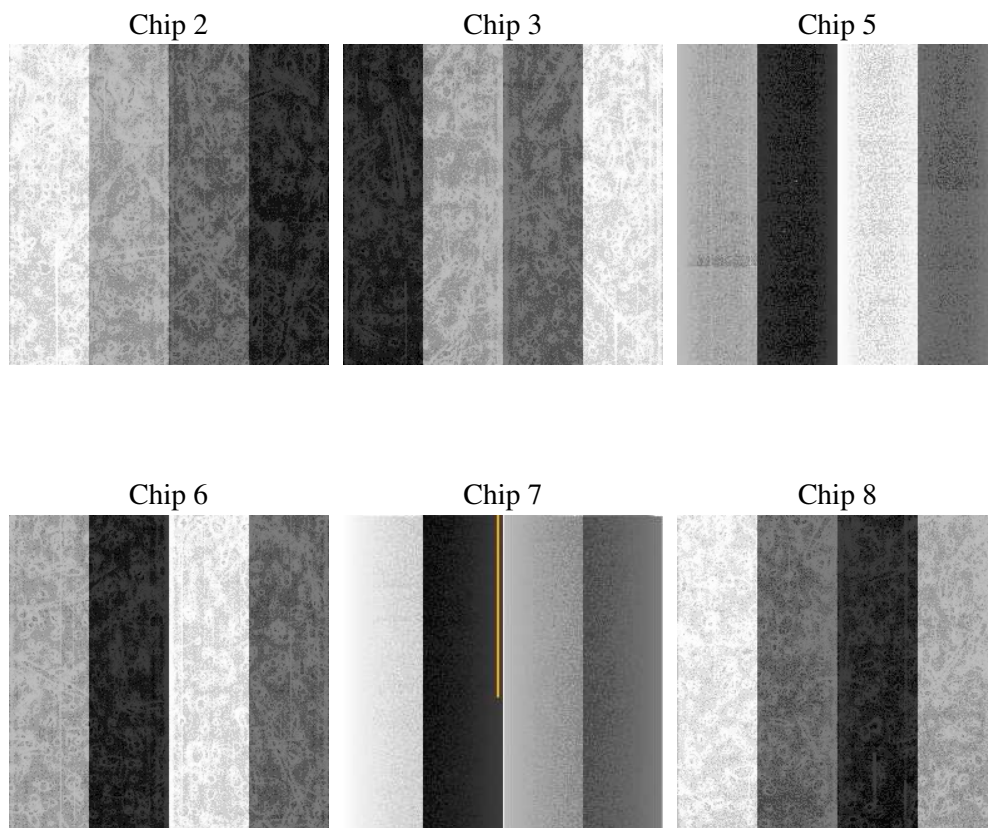
2 OBI

2.1 OBI

2.1.1 Images



2.1.2 Bias



2.1.3 Parameters

obi_num	0
ascdsver	7.6.7.1
caldbver	3.2.1
date	2006-03-15T18:55:56
revision	4

sched_exp_time	6120.000000
ontime	6083.3767156899
ontime2	6083.3767156899
ontime3	6083.3767156899
ontime5	6083.3767156899
ontime6	6083.3767156899
ontime7	6083.3767156899
ontime8	6083.3767156899
l1events	324287

2.1.4 Events

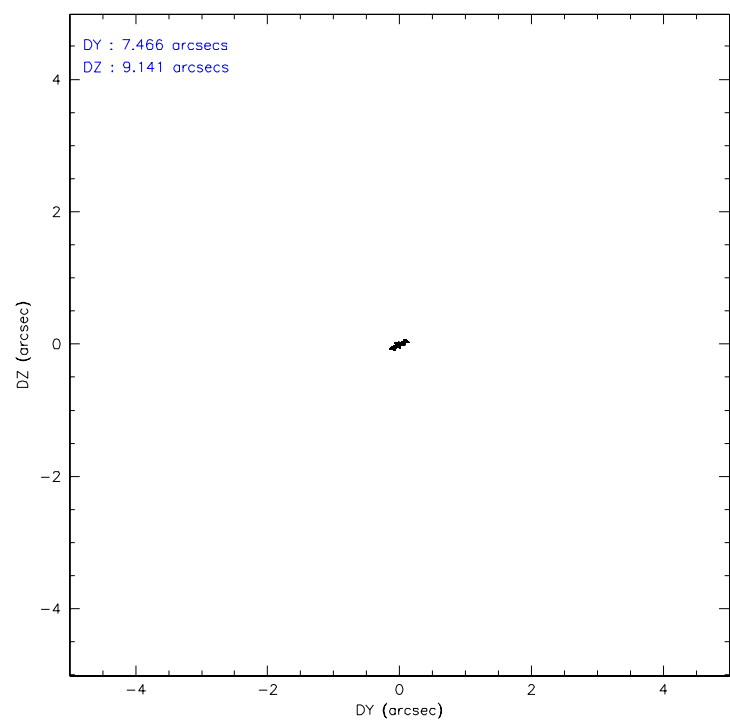
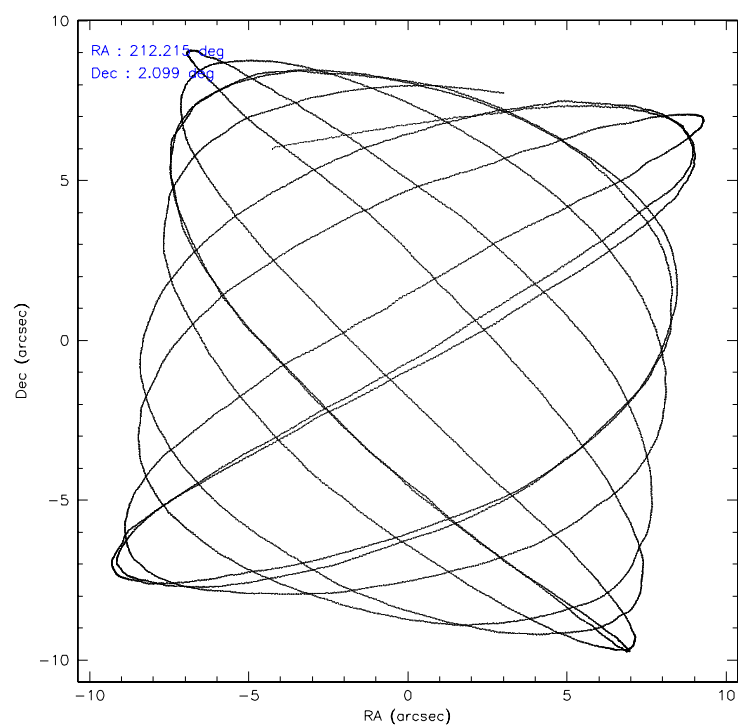
	ccd 2	ccd 3	ccd 5	ccd 6	ccd 7	ccd 8
level 1 events	46607	43250	70317	44667	61327	58119
rejected events	41240	38099	38429	39307	38216	45969
rejected %	88%	88%	54%	88%	62%	79%

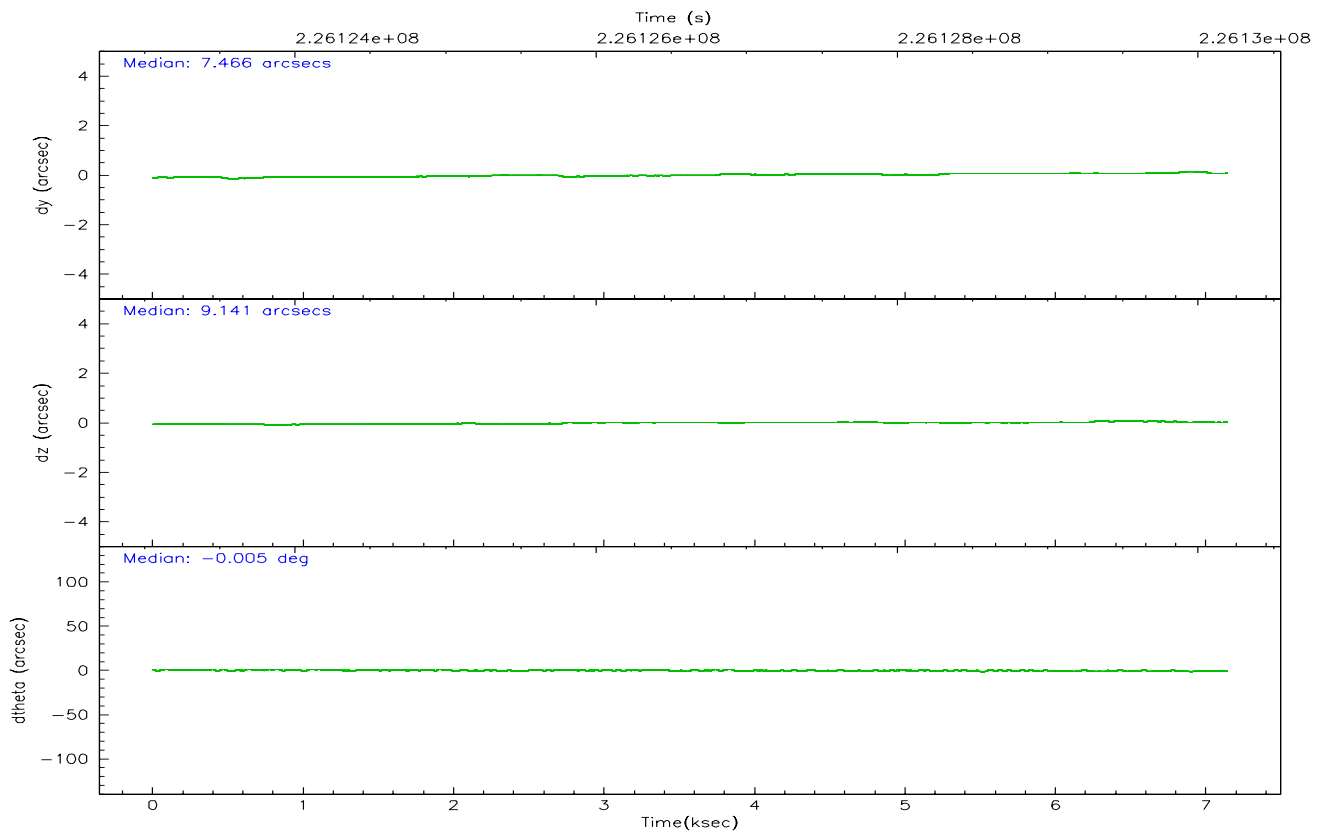
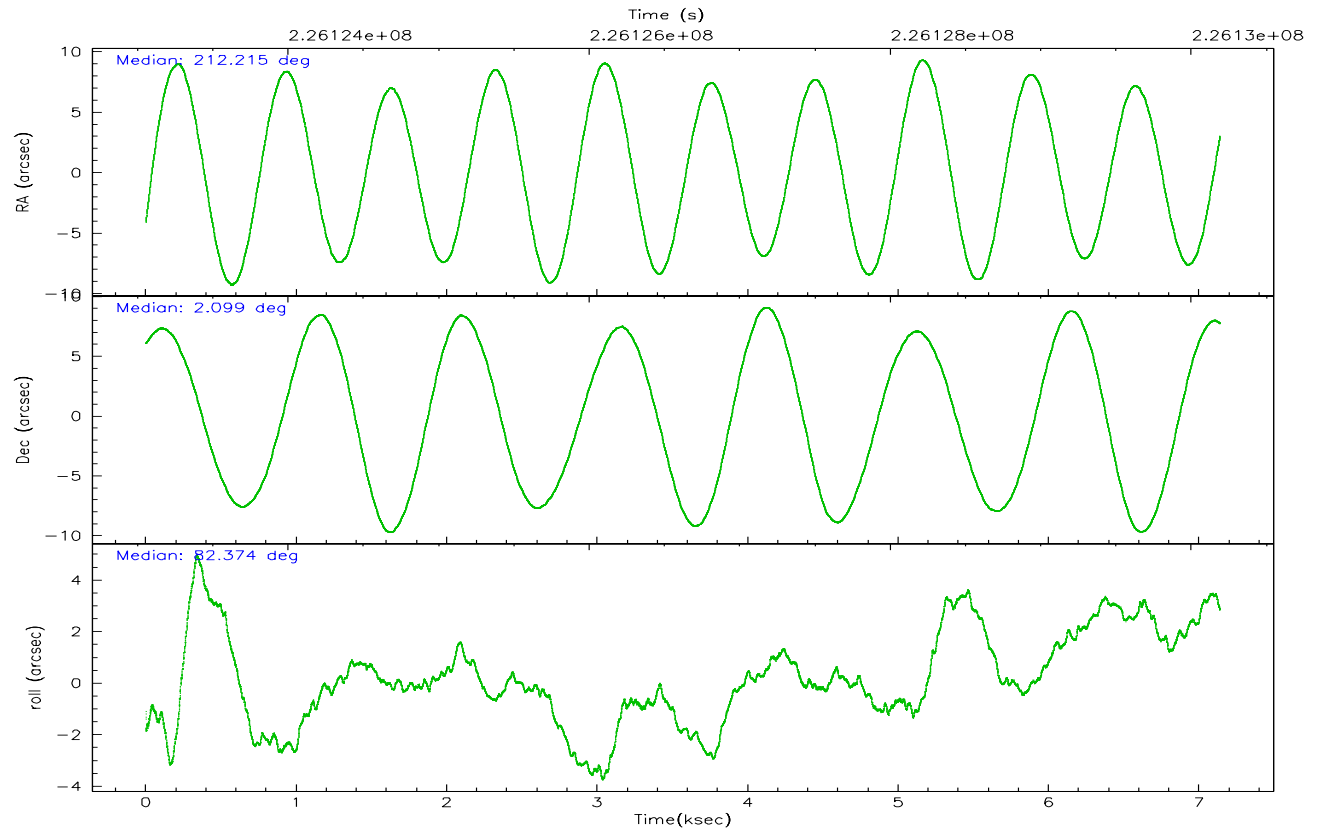
	ccd 2	ccd 3	ccd 5	ccd 6	ccd 7	ccd 8
grade 0 events	2394	2274	4324	2102	1311	3712
	5%	5%	6%	4%	2%	6%
grade 1 events	31	29	222	16	28	40
	0%	0%	0%	0%	0%	0%
grade 2 events	1098	996	9387	1144	5716	2743
	2%	2%	13%	2%	9%	4%
grade 3 events	499	494	685	494	1085	1237
	1%	1%	0%	1%	1%	2%
grade 4 events	510	482	645	511	1017	1120
	1%	1%	0%	1%	1%	1%
grade 5 events	1831	2054	3353	2029	3752	2799
	3%	4%	4%	4%	6%	4%
grade 6 events	869	911	16880	1112	14006	3344
	1%	2%	24%	2%	22%	5%
grade 7 events	39375	36010	34821	37259	34412	43124
	84%	83%	49%	83%	56%	74%

2.2 Compared Parameters

Parameter	Planned	Actual	Parameter	Planned	Actual
Instrument	ACIS	ACIS	Obspar format version number	6	6
Detector	ACIS-235678	ACIS-235678	Obspar file type	PREDICTED	ACTUAL
Grating	NONE	NONE	Obspar update status	NONE	UPDATED
Data mode	FAINT	FAINT	On-chip summing requested	N	N
Observation mode	POINTING	POINTING	Subarray requested	NONE	NONE
Pointing RA	212.225746	212.2150019568876	Alternating exposures requested	N	N
Pointing Dec	2.073785	2.098847858643369	Primary exposure time	0.000000	3.2
Pointing Roll	82.225632	82.38264970888008			
SIM focus pos (mm)	-0.684267	-0.6828225247311905			
SIM defocus (mm)	0	0.001444936568705701			
SIM translation stage pos (mm)	-190.132523	-190.1425803651734			
SIM translation stage offset (mm)	0	0.01005778216563158			
Observation start time	226124078.184000	226122700.89686			
Observation start date	2005-03-02T04:13:34	2005-03-02T03:51:40			
Observation end time	226130198.184000	226130734.84722			
Observation end date	2005-03-02T05:55:34	2005-03-02T06:05:34			
Read mode	TIMED	TIMED			

2.3 Aspect



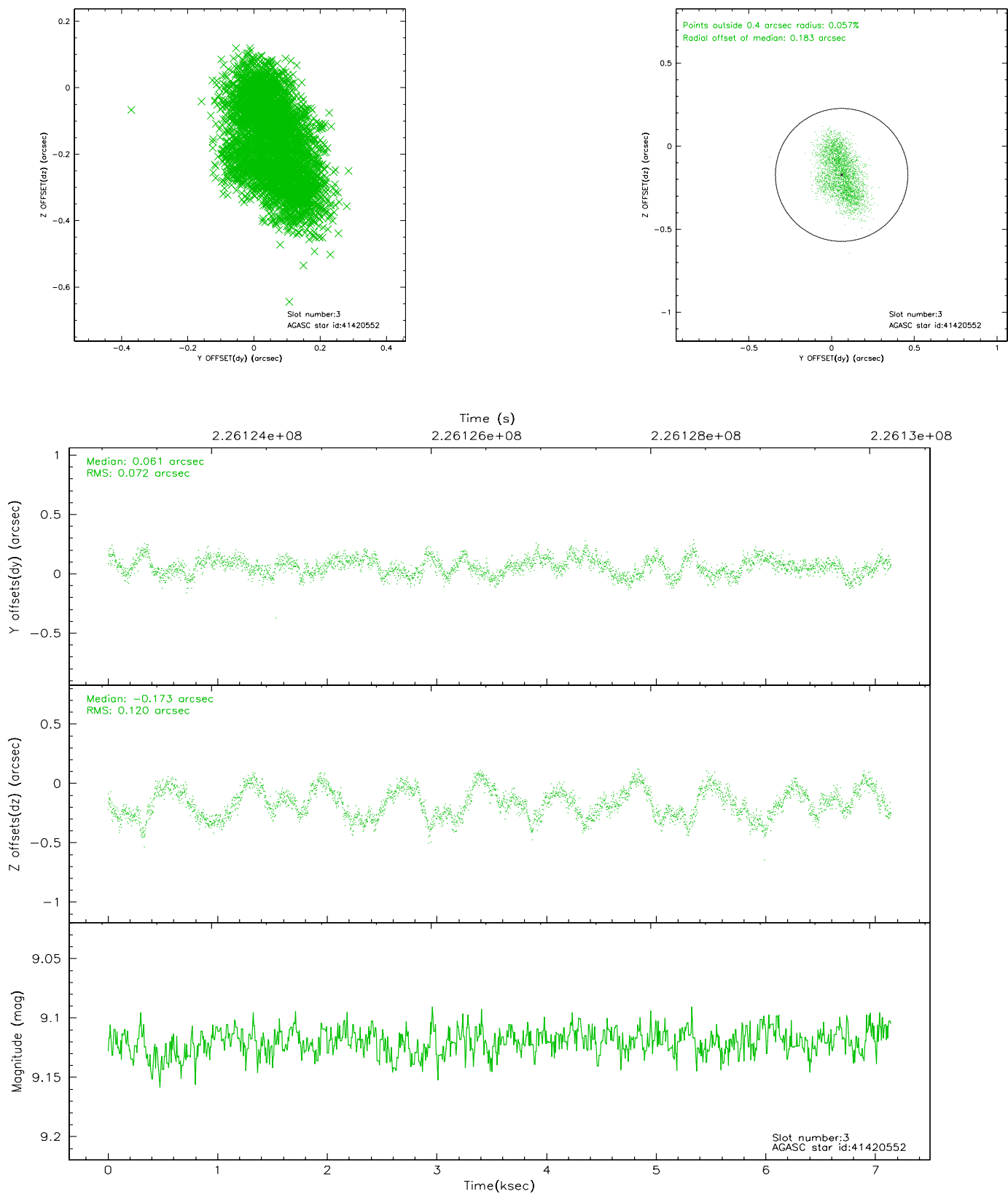


Slot Statistics

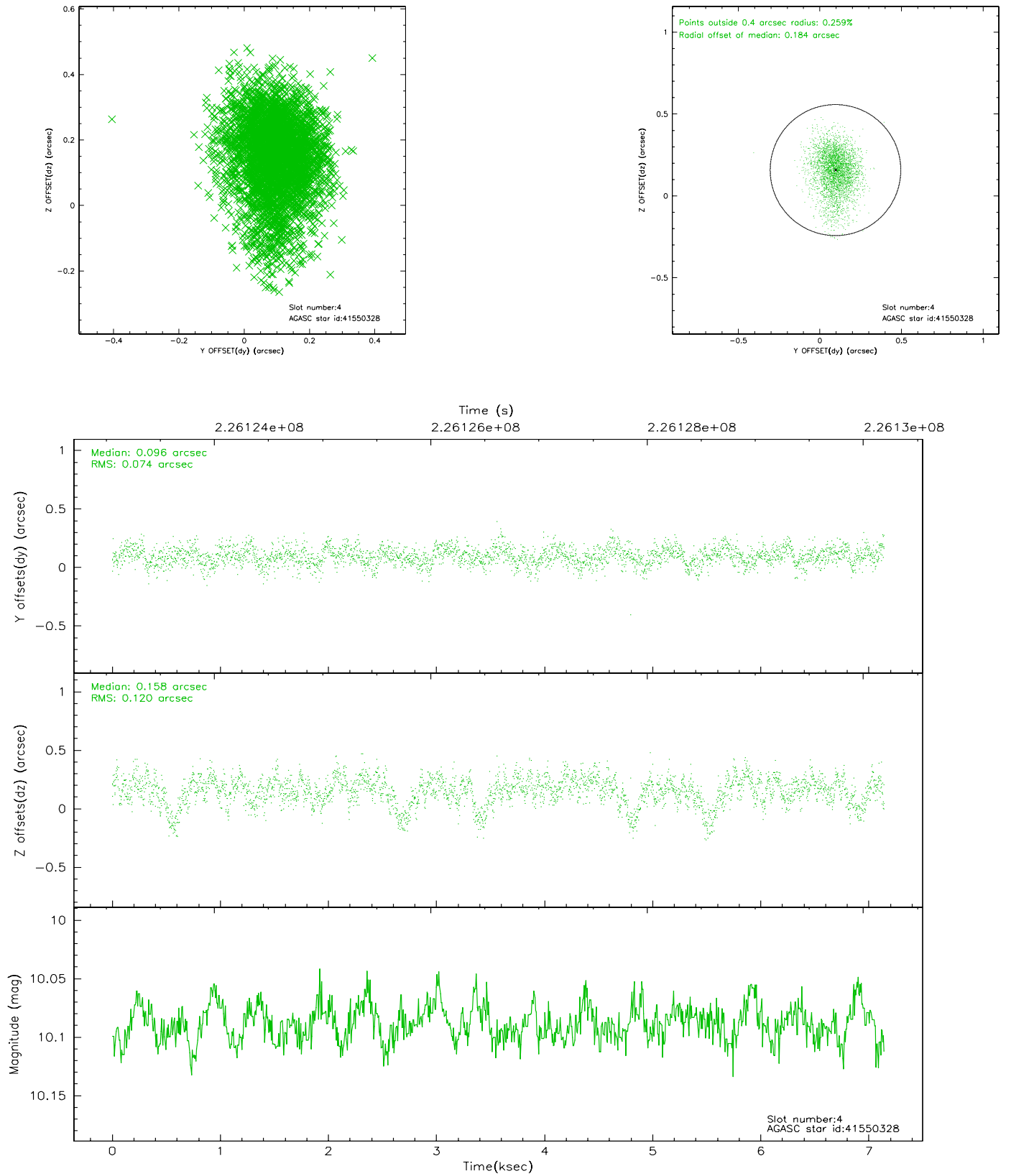
slot	status	id	mag	n_pts	med_dy	med_dz	dr1	dr2	ra	dec	mean_y	mean_z
0	FID	ACIS-S-2	7.10	1742	-0.021	-0.027	0.008	0.012	0.000000	0.000000	-760.23	-1730.34
1	FID	ACIS-S-4	7.20	1742	0.061	0.017	0.006	0.011	0.000000	0.000000	2152.74	177.39
2	FID	ACIS-S-5	7.23	1742	-0.071	0.019	0.007	0.011	0.000000	0.000000	-1812.11	171.93
3	GUIDE	41420552	9.12	3482	0.061	-0.173	0.151	0.233	211.681746	1.924562	-796.63	1866.36
4	GUIDE	41550328	10.09	3480	0.096	0.158	0.144	0.259	212.629903	1.702344	-1127.70	-1621.29
5	OMITTED		0.00	0	0.000	0.000	0.000	0.000	0.000000	0.000000	0.00	0.00
6	GUIDE	41553792	9.65	3473	-0.080	0.039	0.108	0.174	212.509696	2.277510	865.01	-913.01
7	GUIDE	41812816	9.93	3475	-0.075	-0.018	0.135	0.224	212.090922	2.732829	2285.16	801.81

2.4 Star Slots

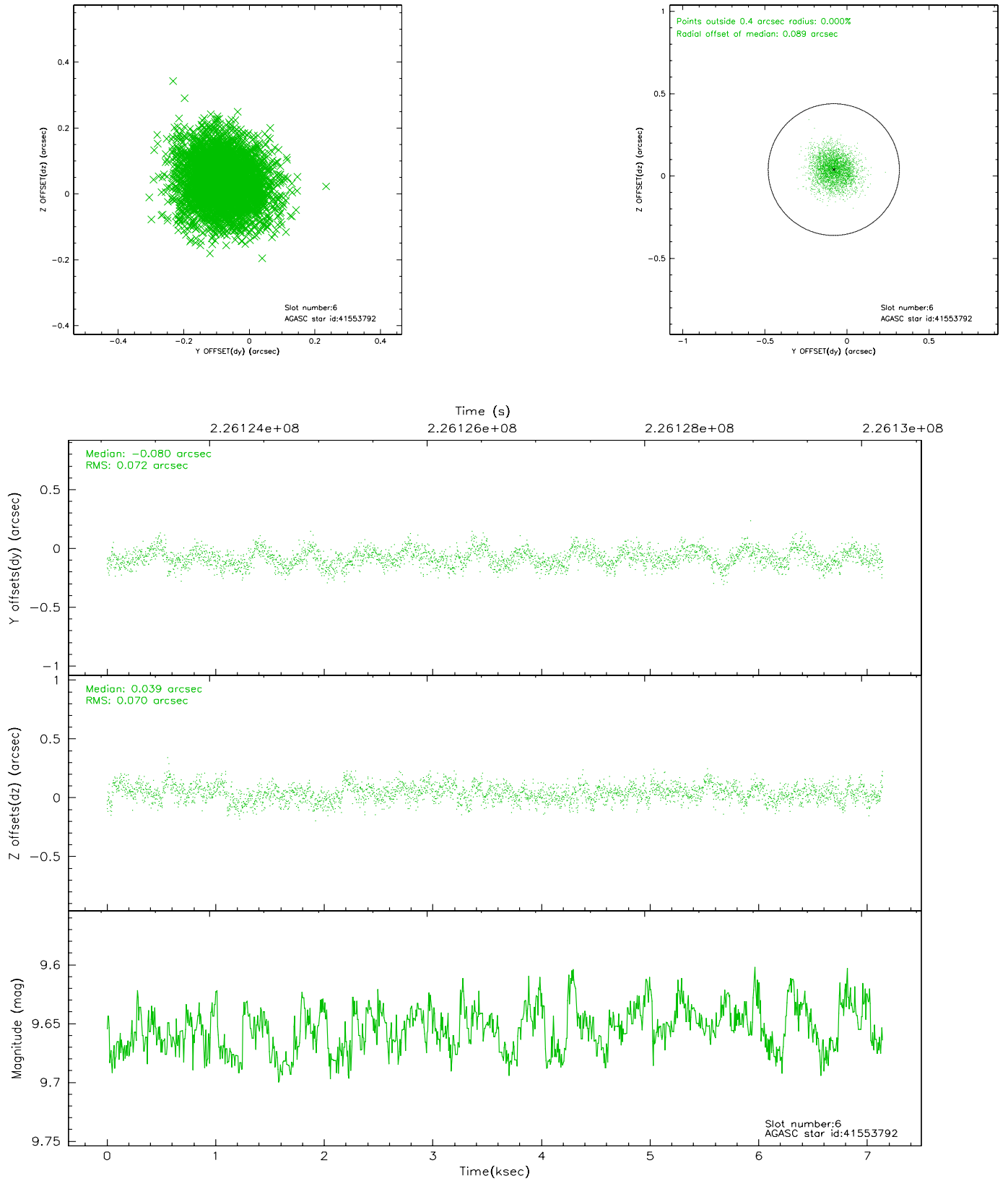
2.4.1 Slot 3



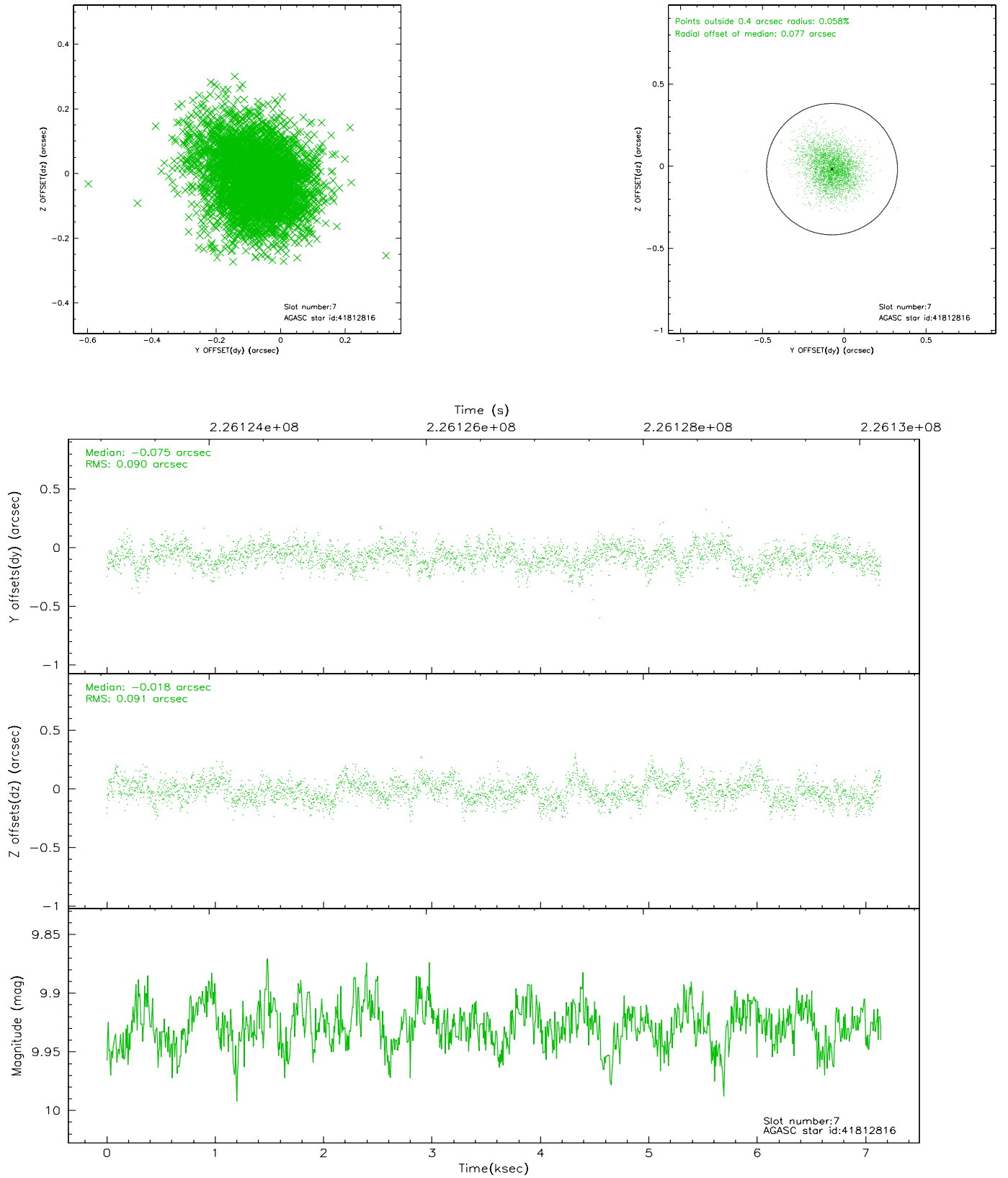
2.4.2 Slot 4



2.4.3 Slot 6

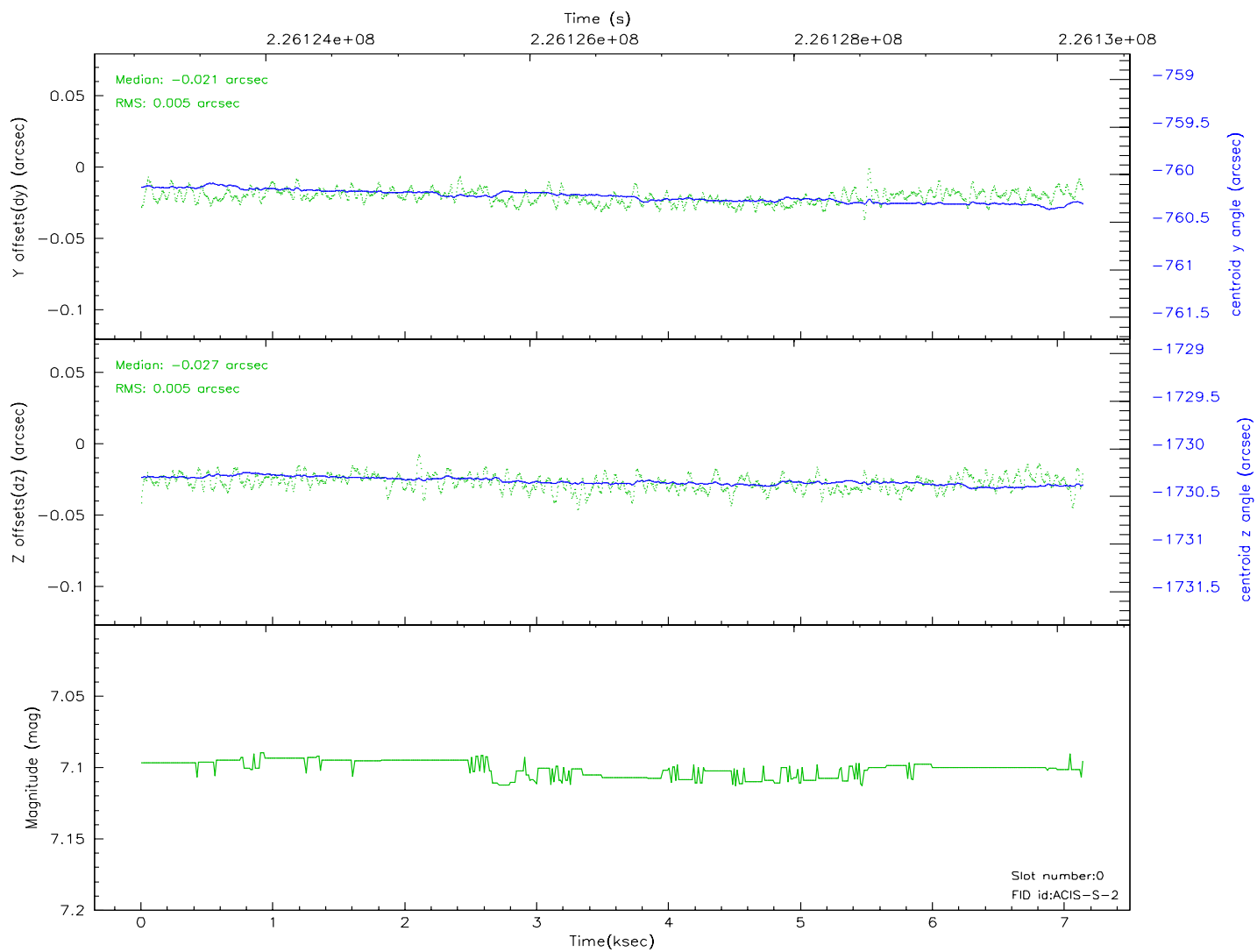
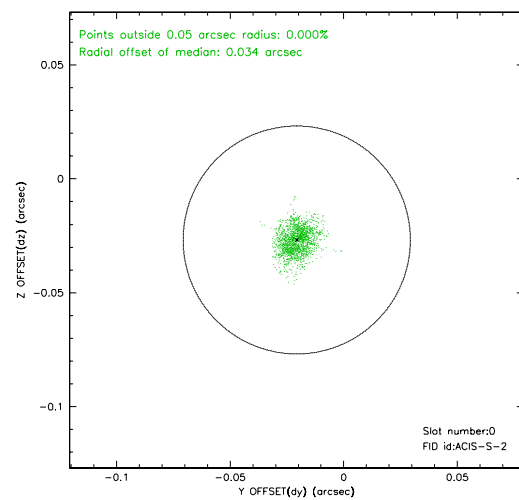
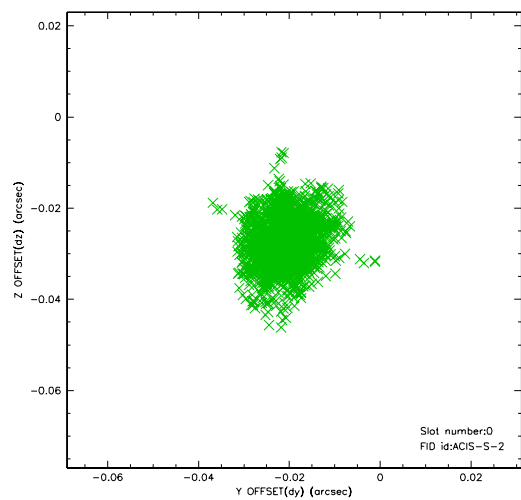


2.4.4 Slot 7

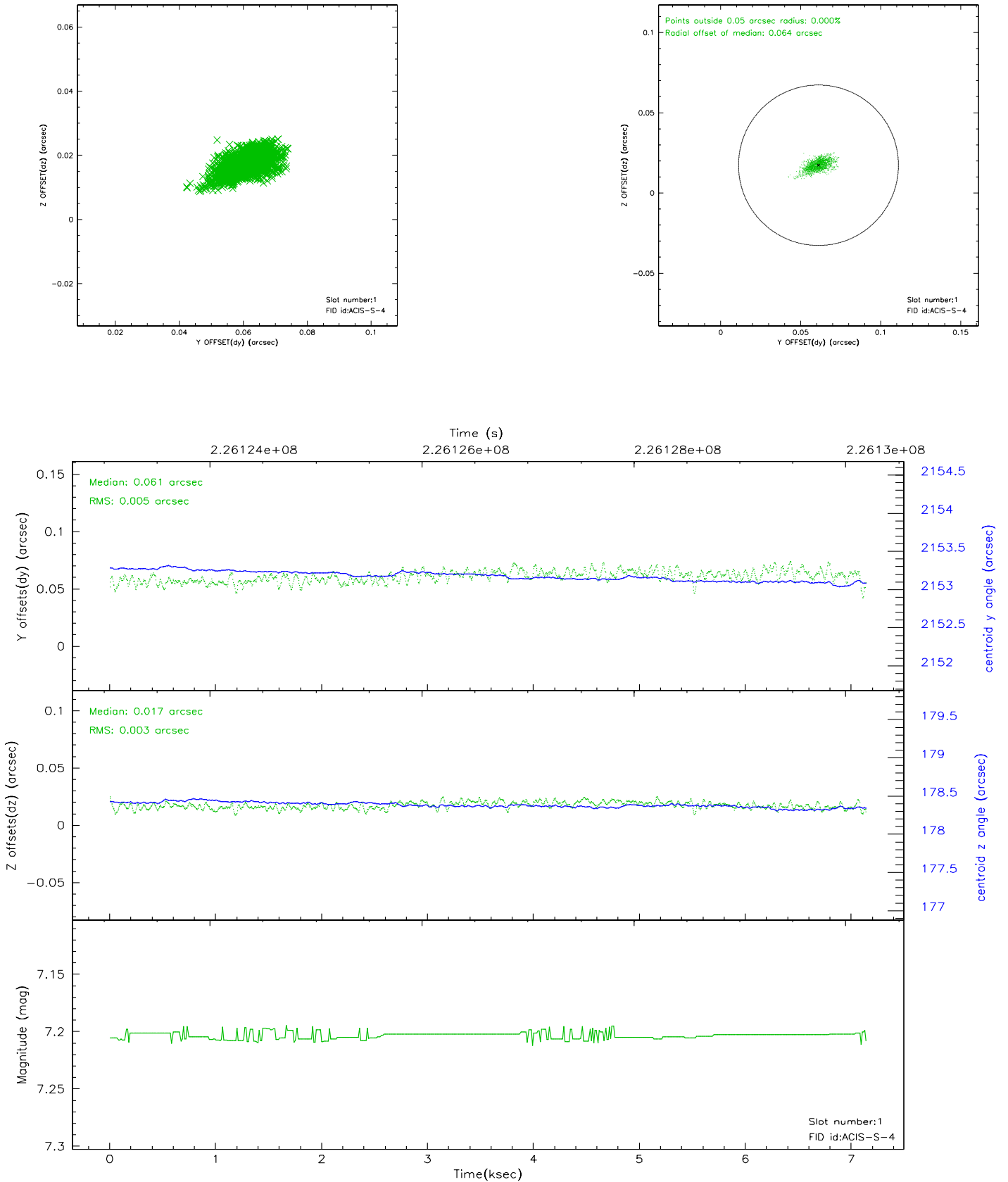


2.5 FID Slots

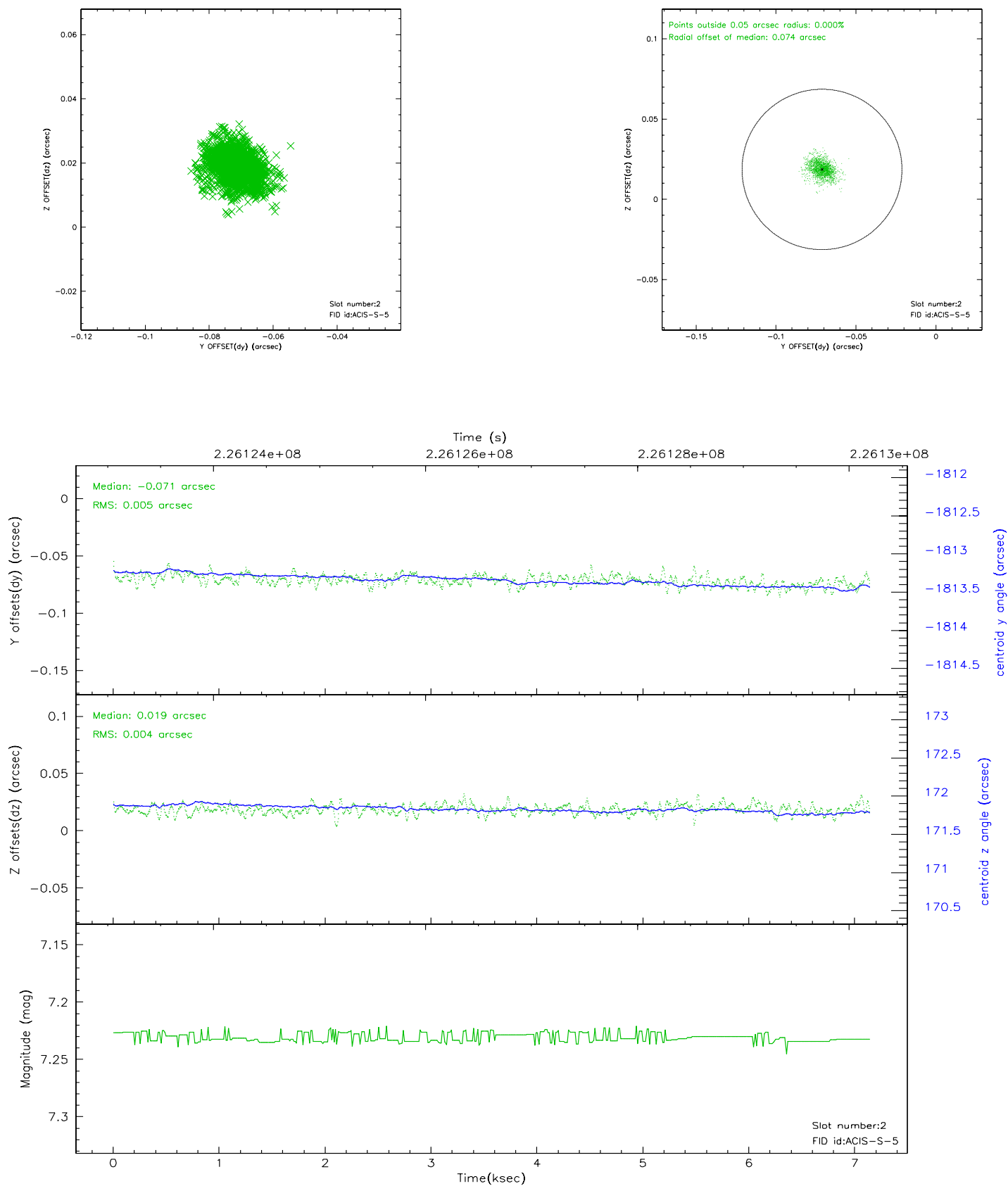
2.5.1 Slot 0



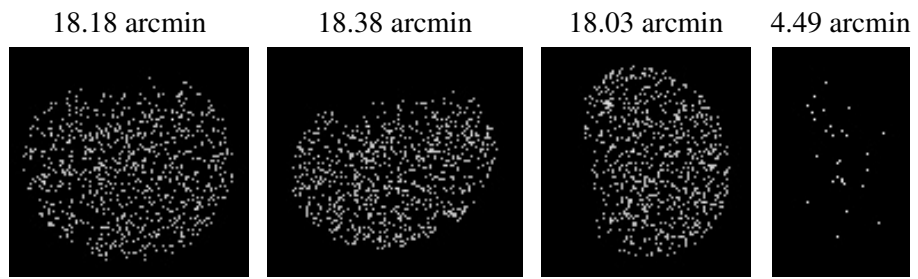
2.5.2 Slot 1



2.5.3 Slot 2



3 Point Sources



A Summary

A.1 Status

V&V Scientist	Jen Lauer
V&V Date (YYYY-MM-DD)	2006.03.16
V&V Edition	1
V&V Disposition and Status	OK
V&V Charge Time	6.076799

A.2 Comments