

# V&V Reference Report

## L2 ASCDS Version : 10.4.3.1

Observation 50996 - L2 Version 1  
Chandra X-Ray Center

L2 Processing Date : May 28 2016

## Contents

<b>1</b>	<b>Front</b>	<b>2</b>
<b>2</b>	<b>OBI</b>	<b>3</b>
2.1	OBI . . . . .	3
2.1.1	Images . . . . .	3
2.1.2	Bias . . . . .	3
2.1.3	Parameters . . . . .	4
2.1.4	Events . . . . .	4
2.2	Compared Parameters . . . . .	5
2.3	Star Slots . . . . .	6
2.4	FID Slots . . . . .	6
<b>A</b>	<b>Summary</b>	<b>7</b>
A.1	Status . . . . .	7
A.2	Comments . . . . .	7

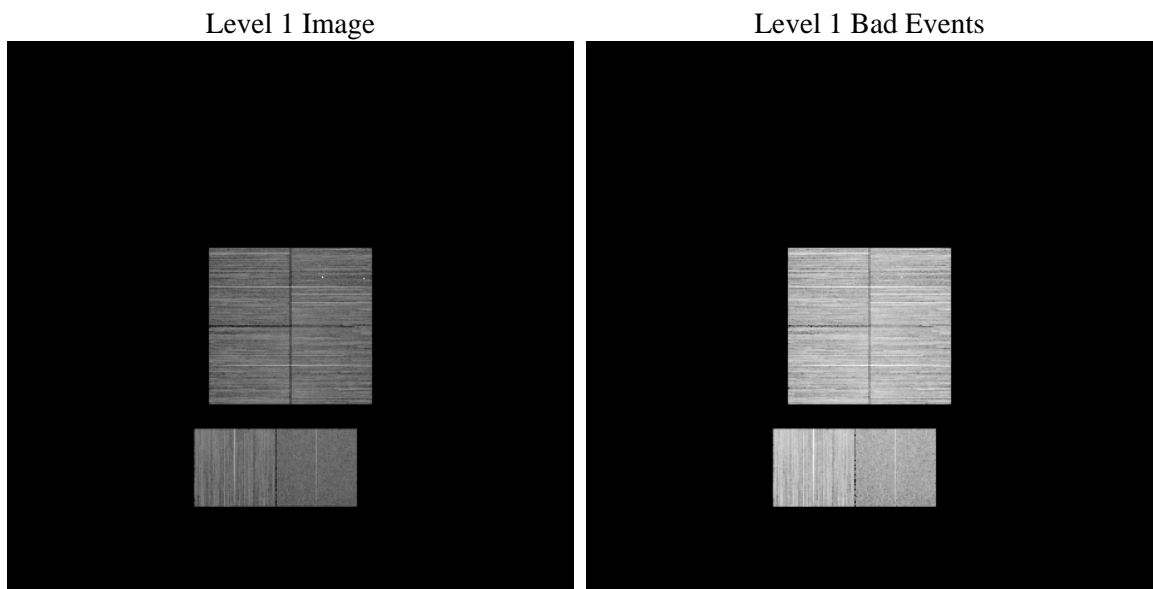
# 1 Front

seq_num	&#160	Sequence number
obs_id	50996	Observation id
title	ACIS-012367 diagnostics	Proposal title
observer	CHANDRA engineering request/realtime commanding	Principal investig
object	&#160	Source name
dtcycle	0	&#160
cycle	P	events from which exps? Prim/Second/Both
ra_targ	0.0	Observer's specified target RA [deg]
dec_targ	0.0	Observer's specified target Dec [deg]
ra_nom	236.81858840414	Nominal RA [deg]
dec_nom	-18.334270382797	Nominal Dec [deg]
roll_nom	216.22969859763	Nominal Roll [deg]
revision	1	Processing version of data
ontime	8204.800122261	Sum of GTIs [s]
livetime	8100.9060027755	Livetime [s]
ontime0	8204.800122261	Sum of GTIs [s]
ontime1	8204.800122261	Sum of GTIs [s]
ontime2	8204.800122261	Sum of GTIs [s]
ontime3	8204.800122261	Sum of GTIs [s]
ontime6	8204.800122261	Sum of GTIs [s]
ontime7	8204.800122261	Sum of GTIs [s]
l2events	142939	Number of level 2 events

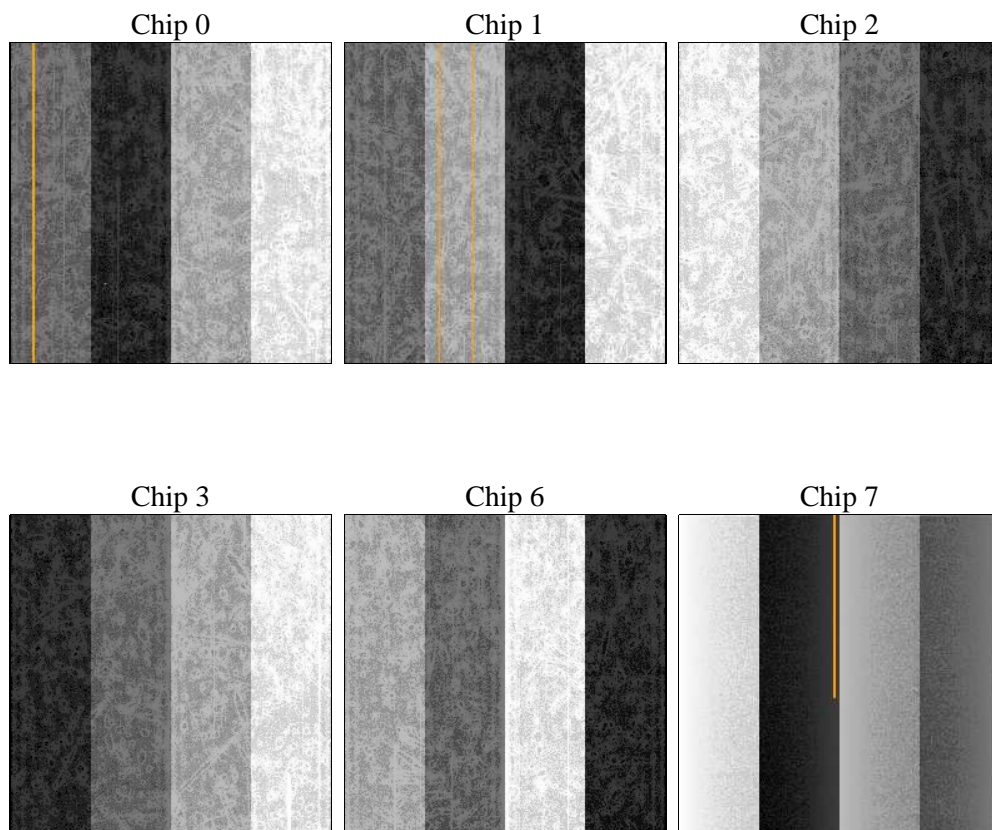
## 2 OBI

### 2.1 OBI

#### 2.1.1 Images



#### 2.1.2 Bias



### 2.1.3 Parameters

obi_num	0	Obi number	sched_exp_time	0.0	[s] Scheduled observation exposure time
ascdsver	10.4.3.1	Processing system revision	ontime	8204.800122261	Sum of GTIs [s]
caldbver	4.7.1	&#160	ontime0	8204.800122261	Sum of GTIs [s]
date	2016-05-28T07:33:49	Date and time of file creation	ontime1	8204.800122261	Sum of GTIs [s]
revision	1	Processing version of data	ontime2	8204.800122261	Sum of GTIs [s]
			ontime3	8204.800122261	Sum of GTIs [s]
			ontime6	8204.800122261	Sum of GTIs [s]
			ontime7	8204.800122261	Sum of GTIs [s]
			l1events	1051050	Number of level 1 events

### 2.1.4 Events

	ccd 0	ccd 1	ccd 2	ccd 3	ccd 6	ccd 7		ccd 0	ccd 1	ccd 2	ccd 3	ccd 6	ccd 7
level 1 events	166142	198928	182349	183565	186632	133434	grade 0 events	9162	16088	9704	9736	9062	5430
rejected events	146324	168754	162547	163232	165830	82066		5%	8%	5%	5%	4%	4%
rejected %	88%	84%	89%	88%	88%	61%	grade 1 events	65	90	73	78	56	106
								0%	0%	0%	0%	0%	0%
							grade 2 events	4538	7491	4191	4314	5041	12990
								2%	3%	2%	2%	2%	9%
							grade 3 events	1392	1464	1431	1486	1379	3689
								0%	0%	0%	0%	0%	2%
							grade 4 events	1380	1475	1419	1544	1374	3797
								0%	0%	0%	0%	0%	2%
							grade 5 events	3342	3368	3027	3704	3582	8539
								2%	1%	1%	2%	1%	6%
							grade 6 events	3497	3896	3202	3385	4118	25853
								2%	1%	1%	1%	2%	19%
							grade 7 events	142766	165056	159302	159318	162020	73030
								85%	82%	87%	86%	86%	54%

## 2.2 Compared Parameters

Parameter	Planned	Actual
Instrument	ACIS	ACIS
Detector	ACIS-012367	ACIS-012367
Grating	NONE	NONE
Data mode	FAINT	FAINT
Observation mode	SECONDARY	SECONDARY
[deg] Pointing RA	0	236.8185884041449
[deg] Pointing Dec	0	-18.3342703827971
[deg] Pointing Roll	0.0	216.2296985976313
SIM focus pos (mm)	-0.68282252473119	-0.68282252473119
[mm] SIM defocus	0.8505140384245534	0.8505140384245534
SIM translation stage pos (mm)	250.4660330802	250.4660330802
[mm] SIM translation stage offset	-0.01005726120527584	-0.01005726120527584
[s] Observation start time (MET)	580779116.566861	580779116.566861
Observation start date	2016-05-27T23:31:57	2016-05-27T23:31:56
[s] Observation end time (MET)	580788665.802197	580788665.802197
Observation end date	2016-05-28T02:11:06	2016-05-28T02:11:05
Read mode	TIMED	TIMED

Parameter	Planned	Actual
Obspar format version number	7	7
Obspar file type	PREDICTED	ACTUAL
Obspar update status	OVERRIDE	OVERRIDE
Number of optional ACIS chips dropped	0	0
On-chip summing requested	N	N
Subarray requested	NONE	NONE
Alternating exposures requested	N	N
[s] Primary exposure time	3.2	3.2

## **2.3 Star Slots**

## **2.4 FID Slots**

## A Summary

### A.1 Status

V&V Scientist	Jen Lauer
V&V Date (YYYY-MM-DD)	2016.05.31
V&V Edition	1
V&V Disposition and Status	OK
V&V Charge Time	8.204800122261

### A.2 Comments