

# V&V Reference Report

## L2 ASCDS Version : 8.4.5

Observation 5096 - L2 Version 3  
Chandra X-Ray Center

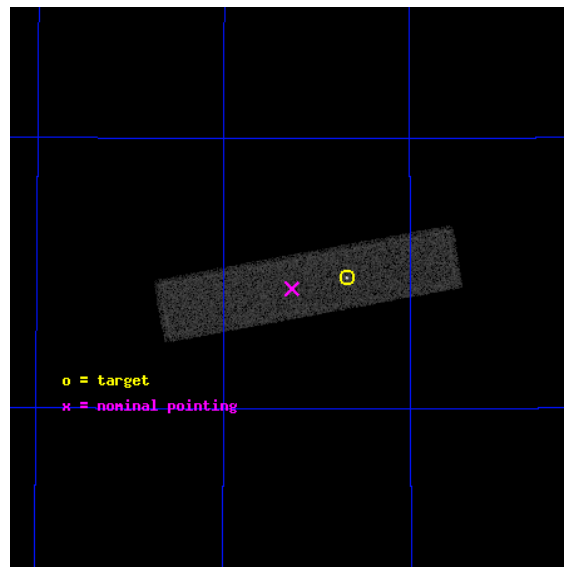
L2 Processing Date : Nov 11 2012

## Contents

<b>1</b>	<b>Front</b>	<b>2</b>
<b>2</b>	<b>OBI</b>	<b>3</b>
2.1	OBI . . . . .	3
2.1.1	Images . . . . .	3
2.1.2	Parameters . . . . .	4
2.1.3	Events . . . . .	4
2.2	Compared Parameters . . . . .	5
2.3	Aspect . . . . .	6
2.4	Star Slots . . . . .	9
2.4.1	Slot 3 . . . . .	9
2.4.2	Slot 4 . . . . .	10
2.4.3	Slot 5 . . . . .	11
2.4.4	Slot 6 . . . . .	12
2.4.5	Slot 7 . . . . .	13
2.5	FID Slots . . . . .	14
2.5.1	Slot 0 . . . . .	14
2.5.2	Slot 1 . . . . .	15
2.5.3	Slot 2 . . . . .	16
<b>A</b>	<b>Summary</b>	<b>17</b>
A.1	Status . . . . .	17
A.2	Comments . . . . .	17

# 1 Front

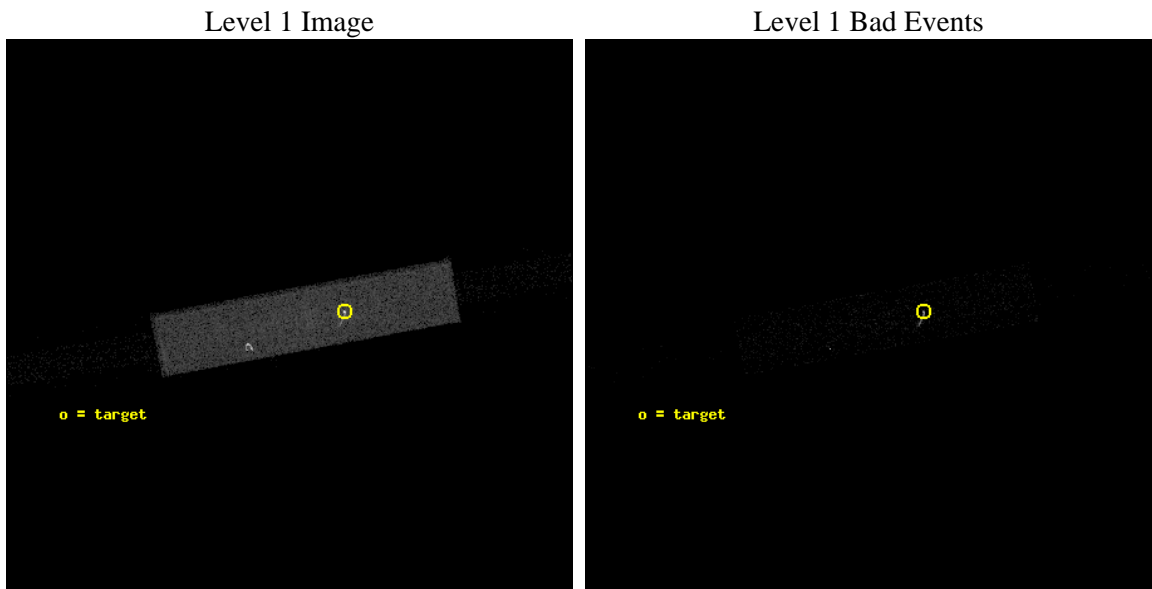
seq_num	290369	Sequence number
obs_id	5096	Observation id
title	AO5A Calibration Observations to Monitor the Spatial Variations in the HRC-S Gain	Proposal title
observer	Dr. CXC Calibration	Principal investigator
object	ArLac	Source name
ra_targ	332.17	Observer's specified target RA [deg]
dec_targ	45.742306	Observer's specified target Dec [deg]
ra_nom	332.31700868758	Nominal RA [deg]
dec_nom	45.722165072924	Nominal Dec [deg]
roll_nom	349.51378505323	Nominal Roll [deg]
revision	3	Processing version of data
ontime	1088.8062976301	[s]
livetime	1082.8184983116	Ontime multiplied by DTCOR
l2events	40596	Number of level 2 events



## 2 OBI

### 2.1 OBI

#### 2.1.1 Images



### 2.1.2 Parameters

obi_num	0	Obi number	sched_exp_time	946.000000	[s] Scheduled observation exposure time
ascdsver	8.4.5	Processing system revision	ontime	1088.8062976301	[s]
caldsver	4.5.2	&#160	l1events	72343	Number of level 1 events
date	2012-11-11T16:52:15	Date and time of file creation			
revision	3	Processing version of data			

### 2.1.3 Events

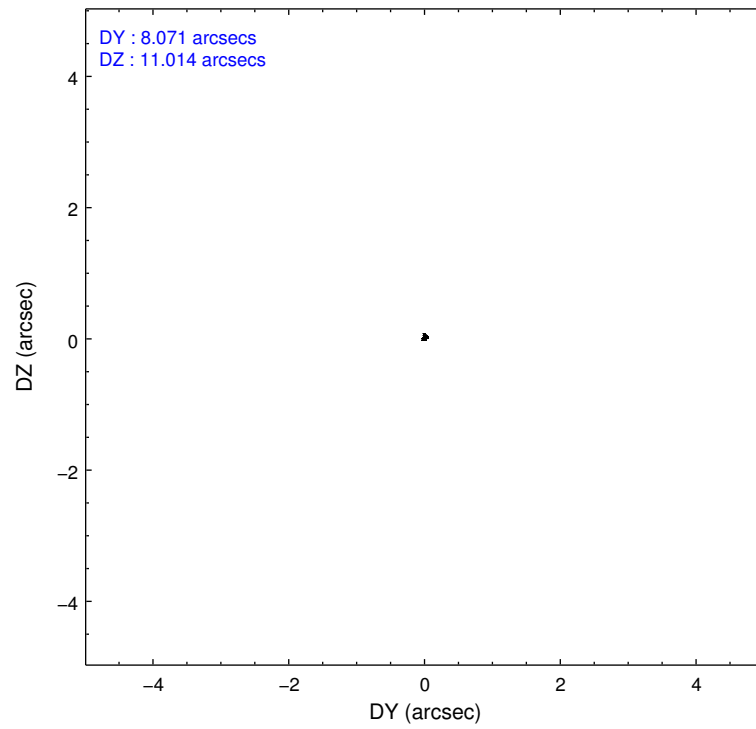
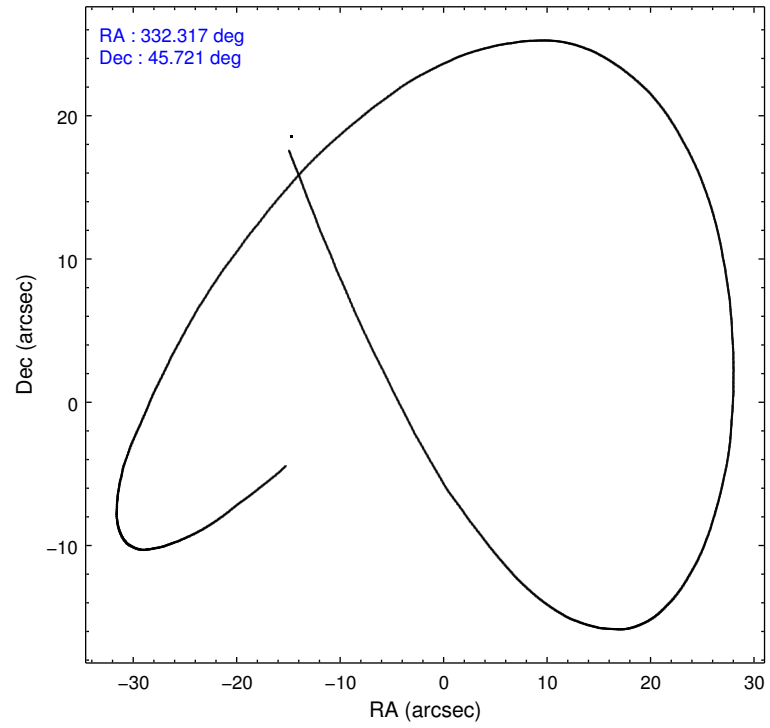
Level 1 Events

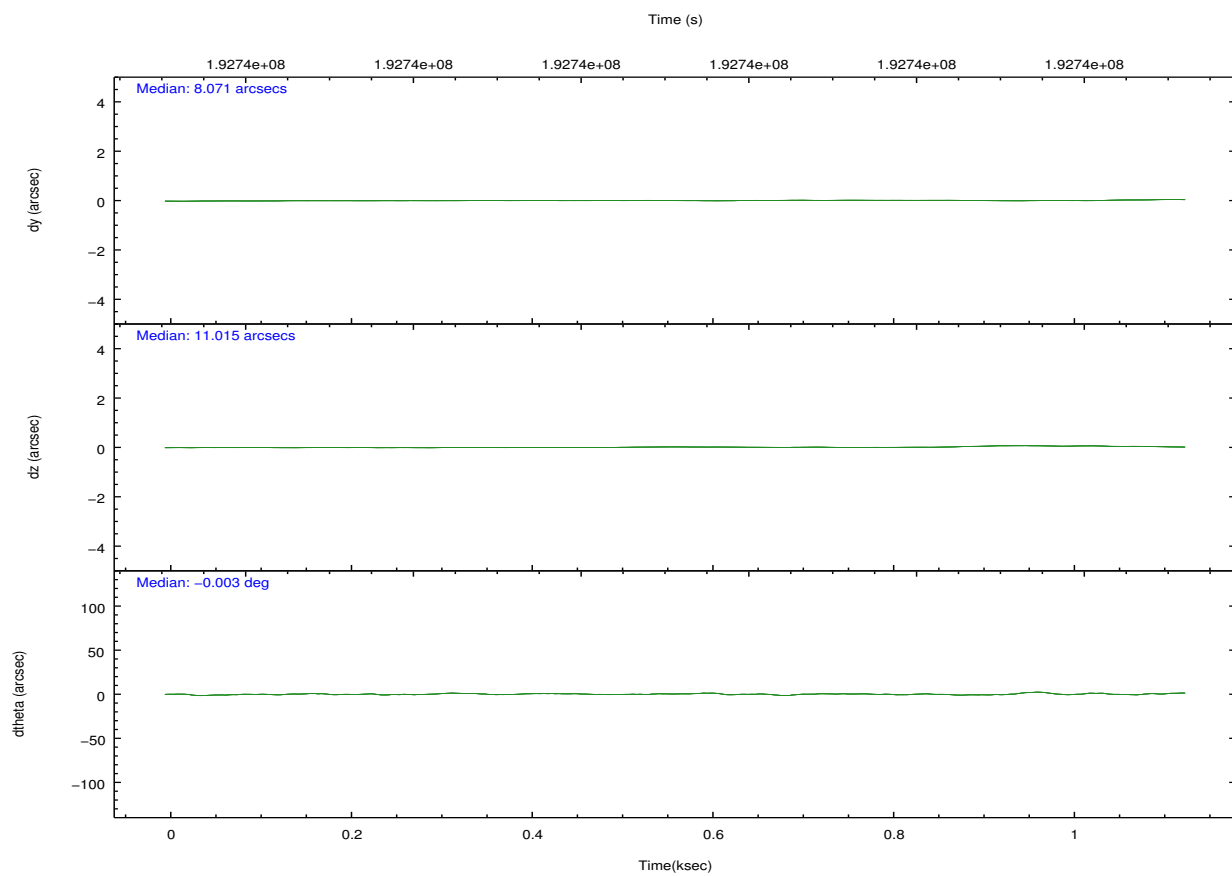
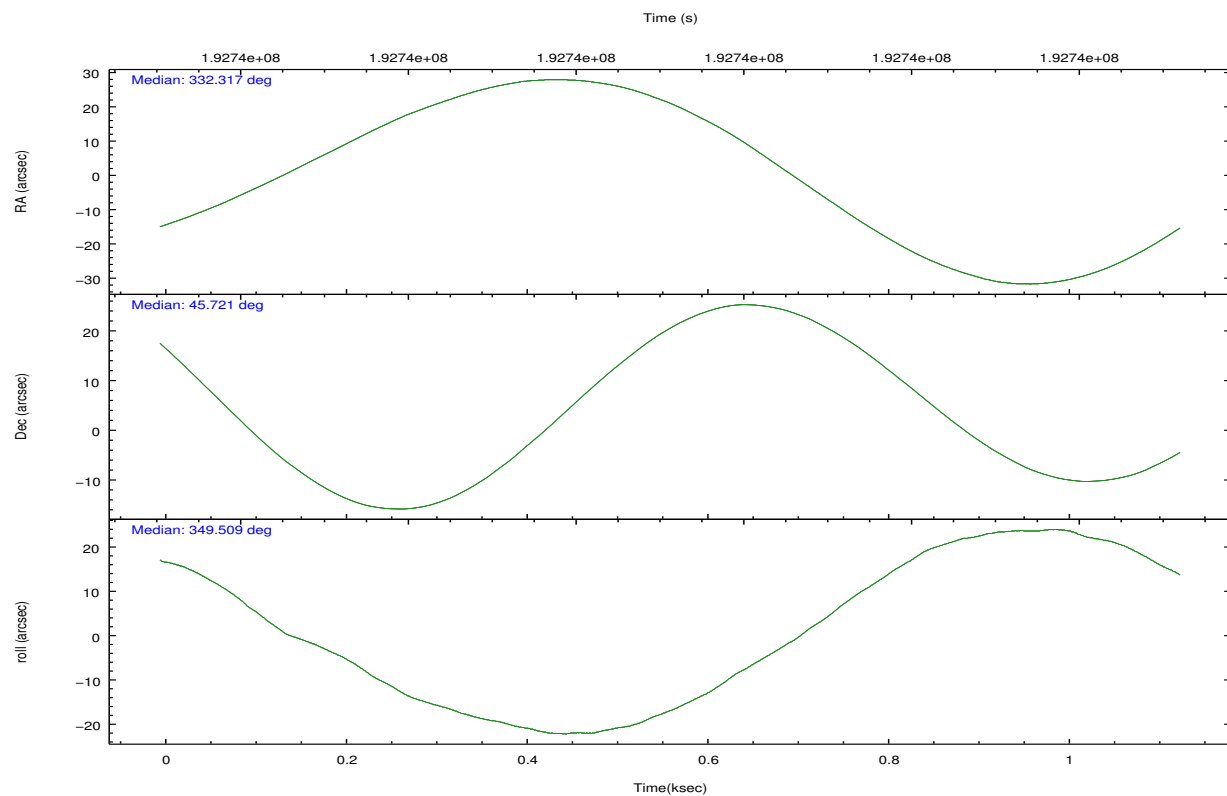
	segment 1	segment 2	segment 3
level 1 events	1046	70173	1124
rejected events	1046	16657	1124
rejected %	100%	23%	100%

## 2.2 Compared Parameters

Parameter	Planned	Actual	Parameter	Planned	Actual
Instrument	HRC	HRC	Obspar format version number	7	7
Detector	HRC-S	HRC-S	Obspar file type	PREDICTED	ACTUAL
Grating	NONE	NONE	Obspar update status	NONE	UPDATED
Data mode	OBSERVING	OBSERVING			
Observation mode	POINTING	POINTING			
[deg] Pointing RA	332.279541	332.3170086875832			
[deg] Pointing Dec	45.712225	45.72216507292442			
[deg] Pointing Roll	349.473288	349.5137850532303			
[mm] SIM focus pos	-1.429586	-1.428180813131781			
[mm] SIM defocus	0.1037507710433287	0.1051558262725154			
[mm] SIM translation stage pos	250.455976	250.466033080201			
[mm] SIM translation stage offset	0	-0.01005468664627074			
[s] Observation start time (MET)	192741729.184000	192741352.72296			
Observation start date	2004-02-09T19:21:05	2004-02-09T19:15:52			
[s] Observation end time (MET)	192742675.184000	192742809.24802			
Observation end date	2004-02-09T19:36:51	2004-02-09T19:40:09			

## 2.3 Aspect



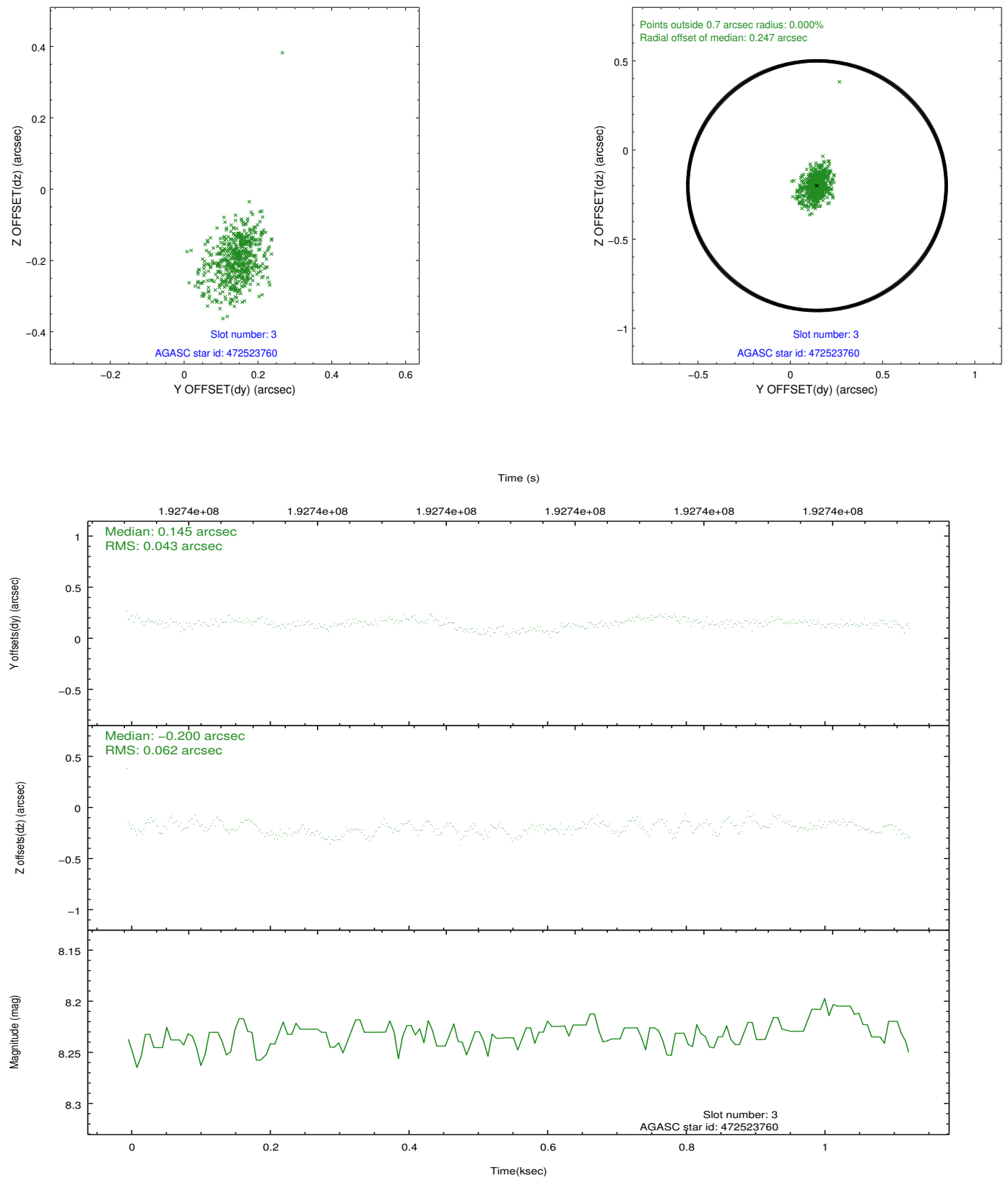


### Slot Statistics

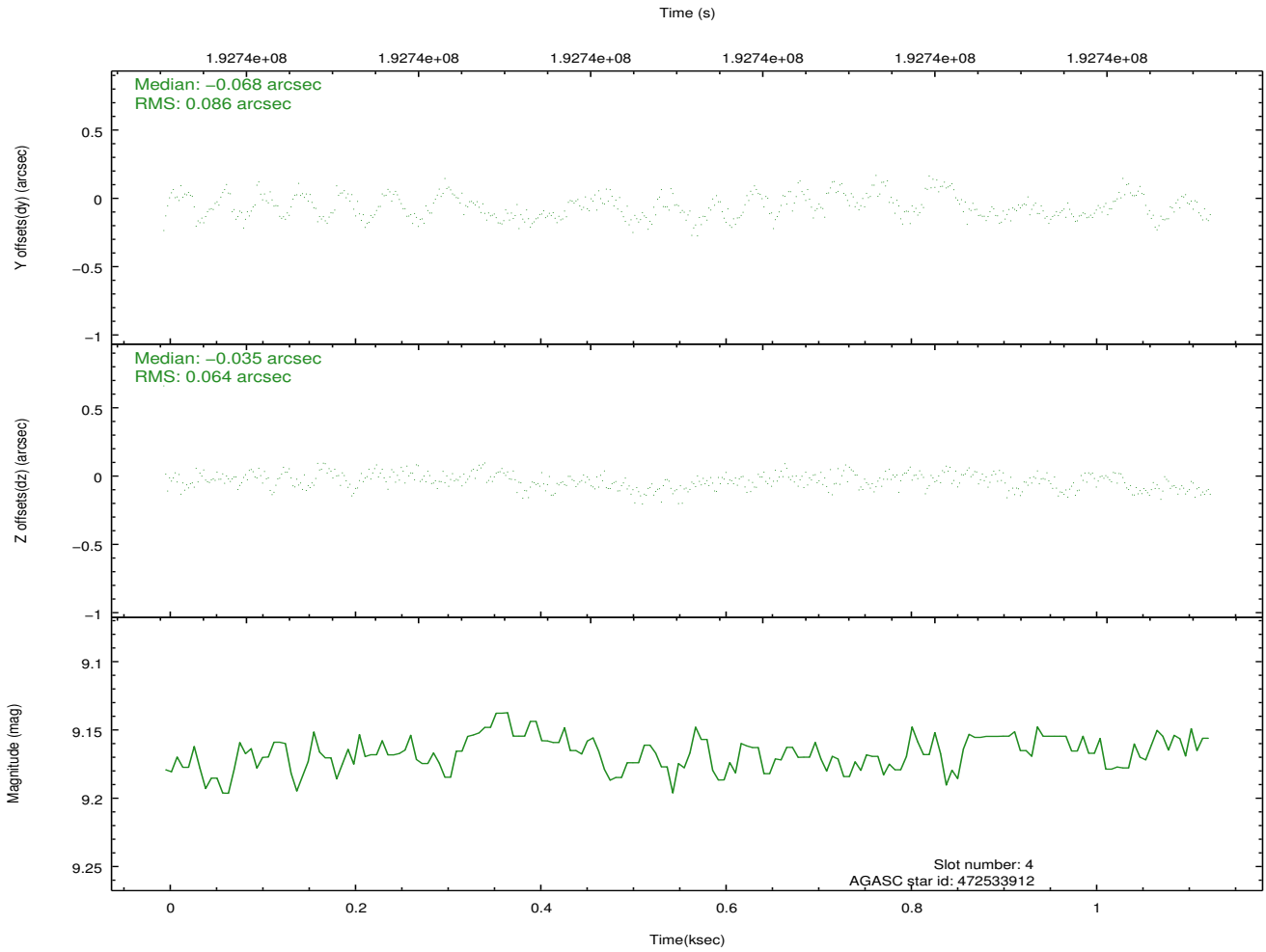
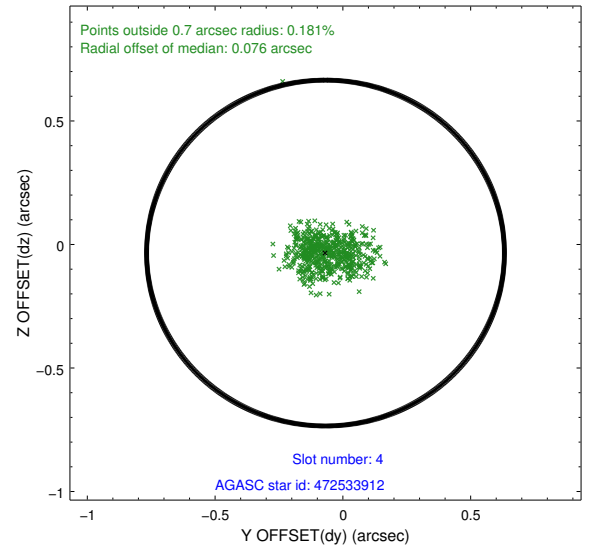
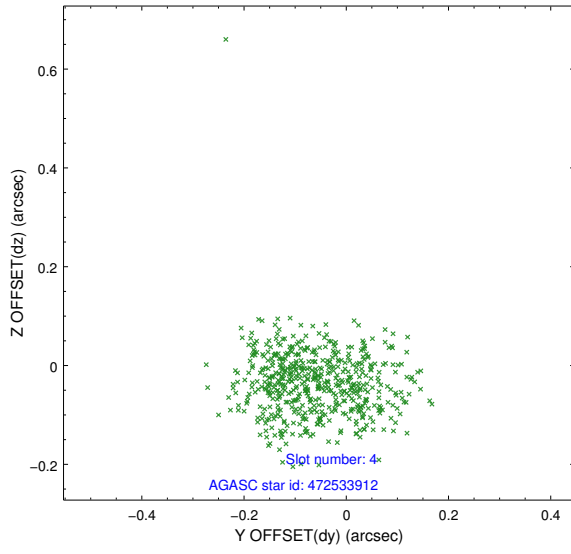
slot	status	id	mag	n_pts	med_dy	med_dz	dr1	dr2	ra	dec	mean_y	mean_z
0	FID	HRC-S-1	7.03	276	0.151	-0.165	0.006	0.010	0.000000	0.000000	-1162.23	-459.73
1	FID	HRC-S-2	7.02	276	0.130	-0.109	0.004	0.011	0.000000	0.000000	1233.22	-454.01
2	FID	HRC-S-3	7.03	276	0.109	-0.027	0.007	0.011	0.000000	0.000000	-1160.51	568.29
3	GUIDE	472523760	8.23	551	0.145	-0.200	0.075	0.126	331.645363	45.403260	-1373.14	-1376.88
4	GUIDE	472533912	9.17	552	-0.068	-0.035	0.112	0.177	331.791136	46.368695	-1627.45	2106.57
5	GUIDE	472655152	9.43	552	0.180	0.074	0.105	0.178	332.504239	45.862991	452.31	644.87
6	GUIDE	472659832	9.46	552	0.045	0.219	0.099	0.161	332.780399	46.098139	976.07	1603.32
7	BAD	472654568	9.43	480	-0.349	-0.049	0.101	0.177	332.194449	45.063576	218.75	-2325.56

## 2.4 Star Slots

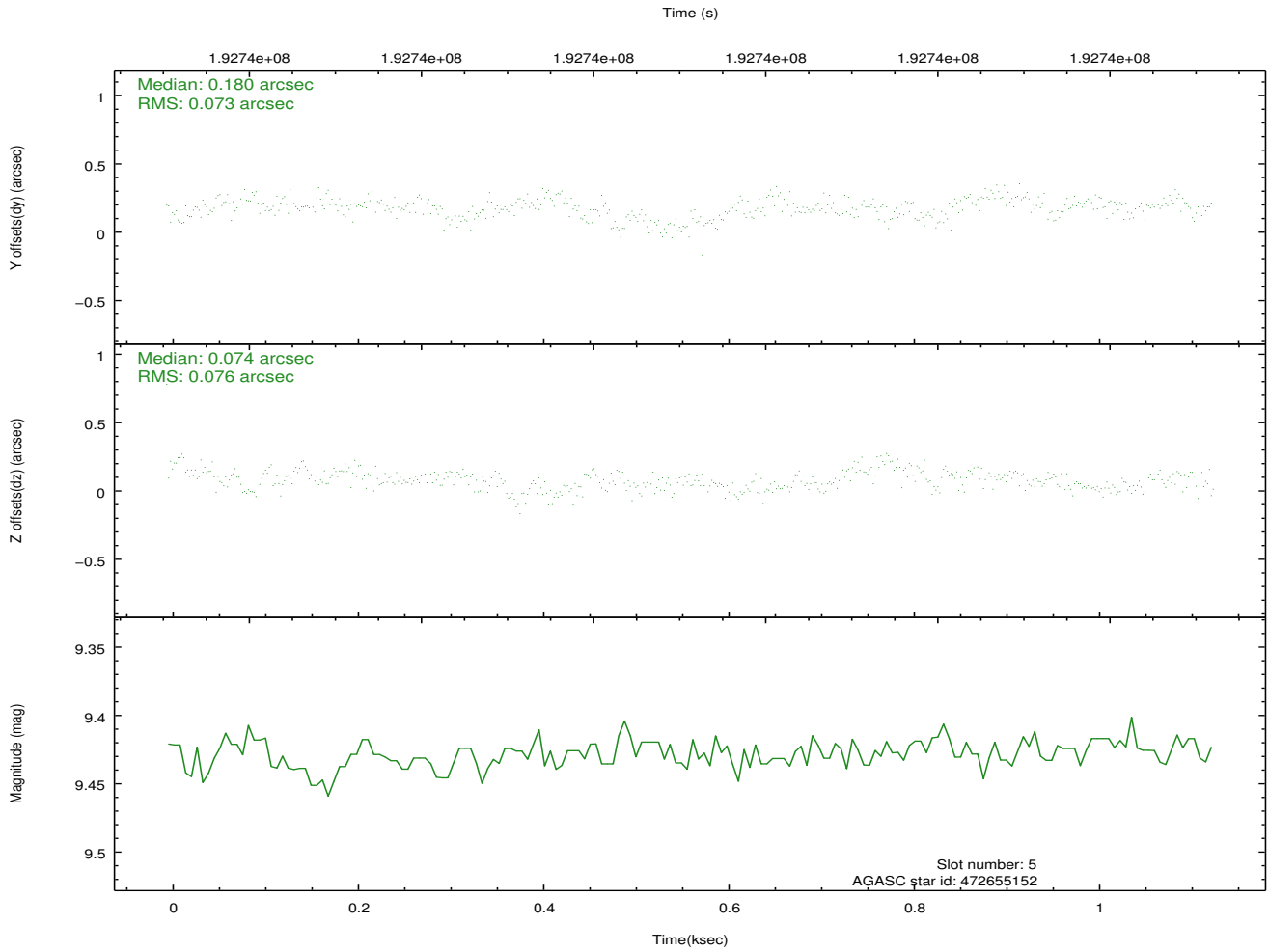
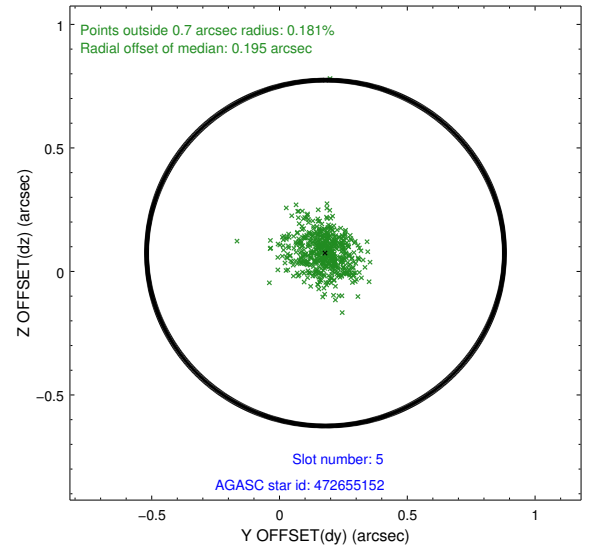
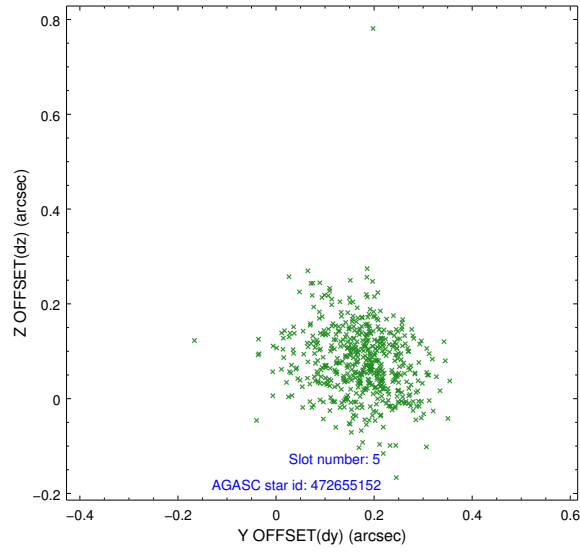
### 2.4.1 Slot 3



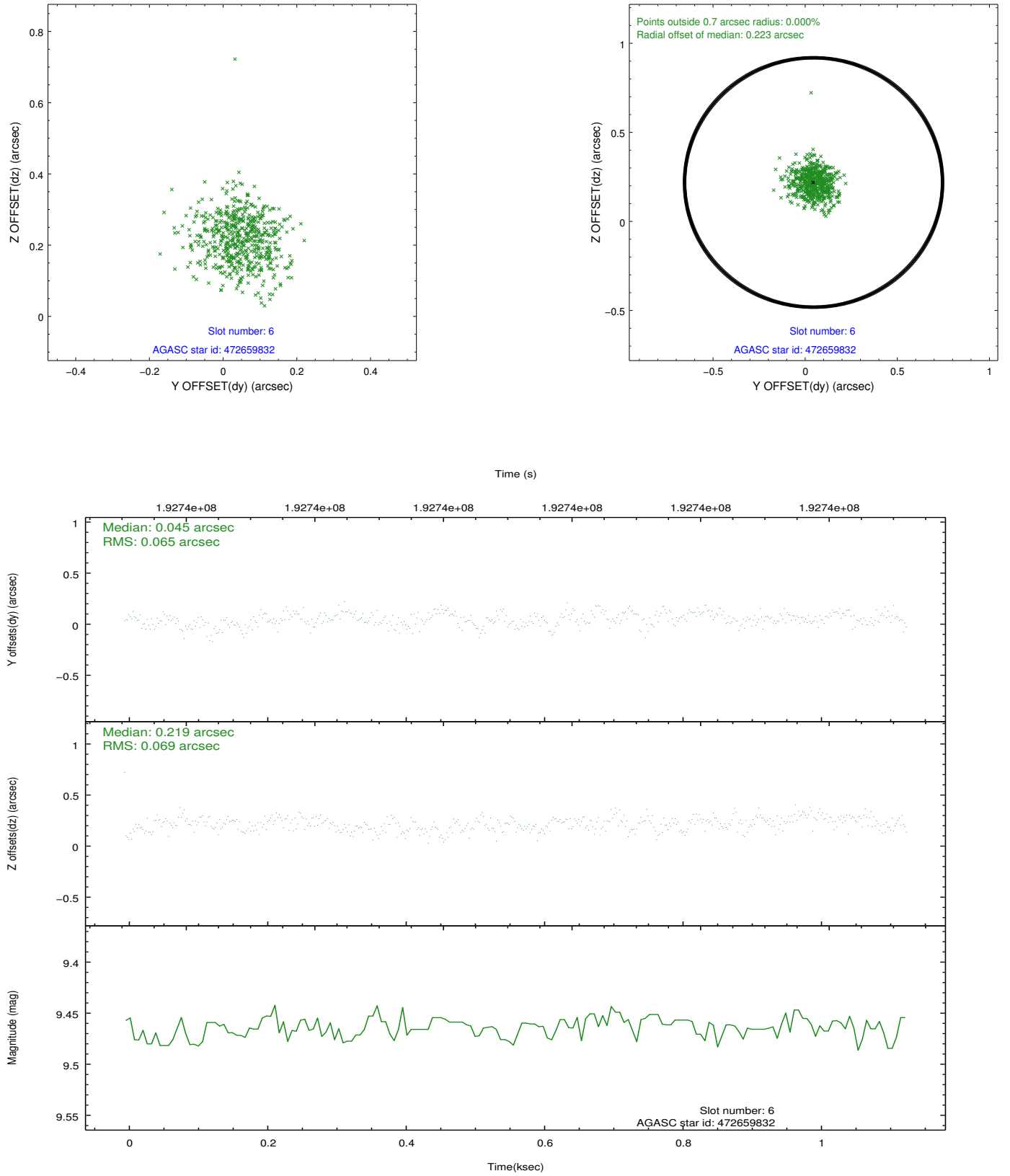
## 2.4.2 Slot 4



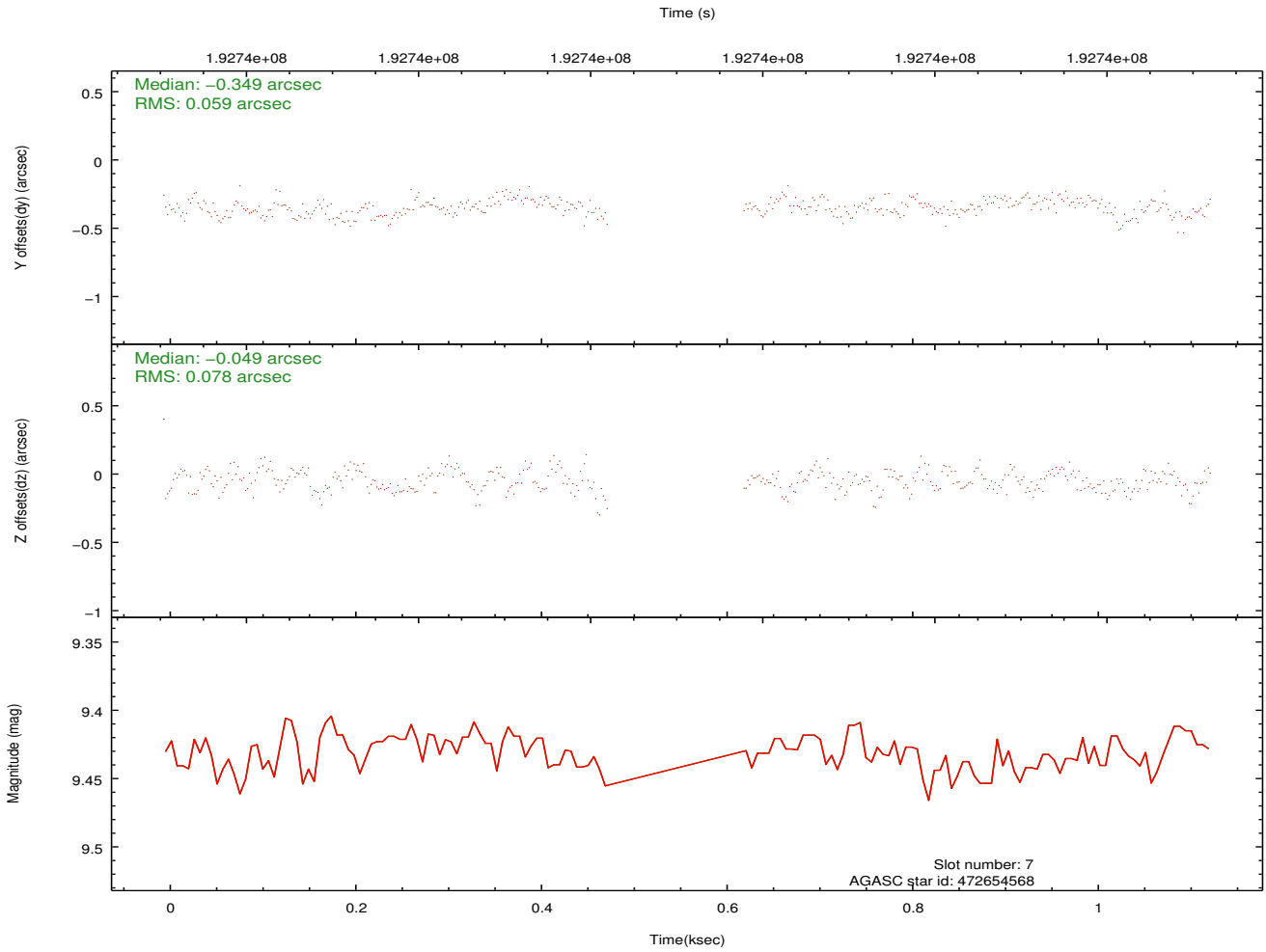
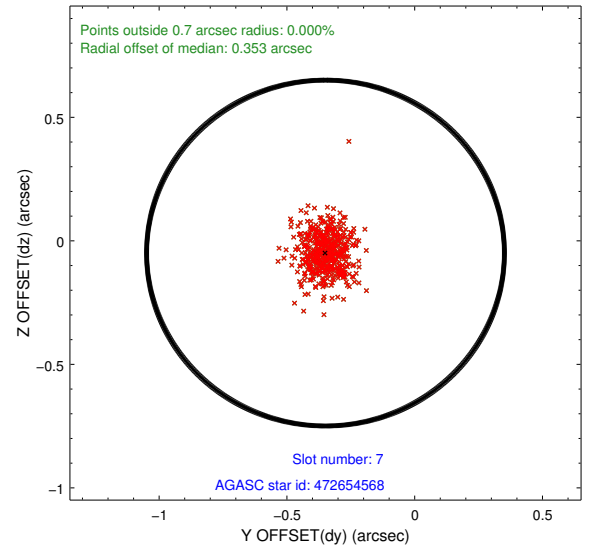
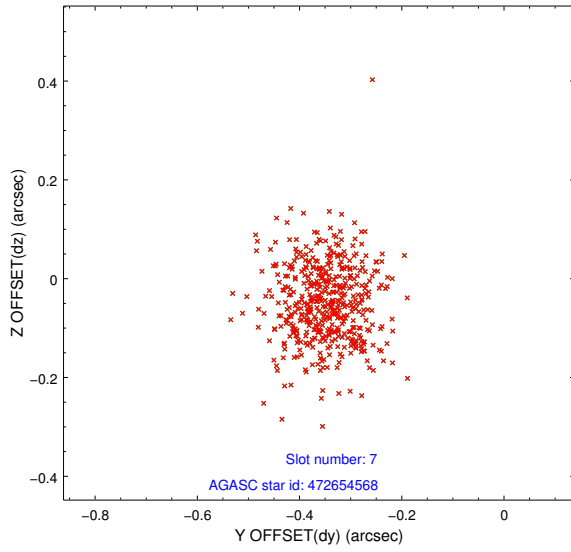
### 2.4.3 Slot 5



## 2.4.4 Slot 6

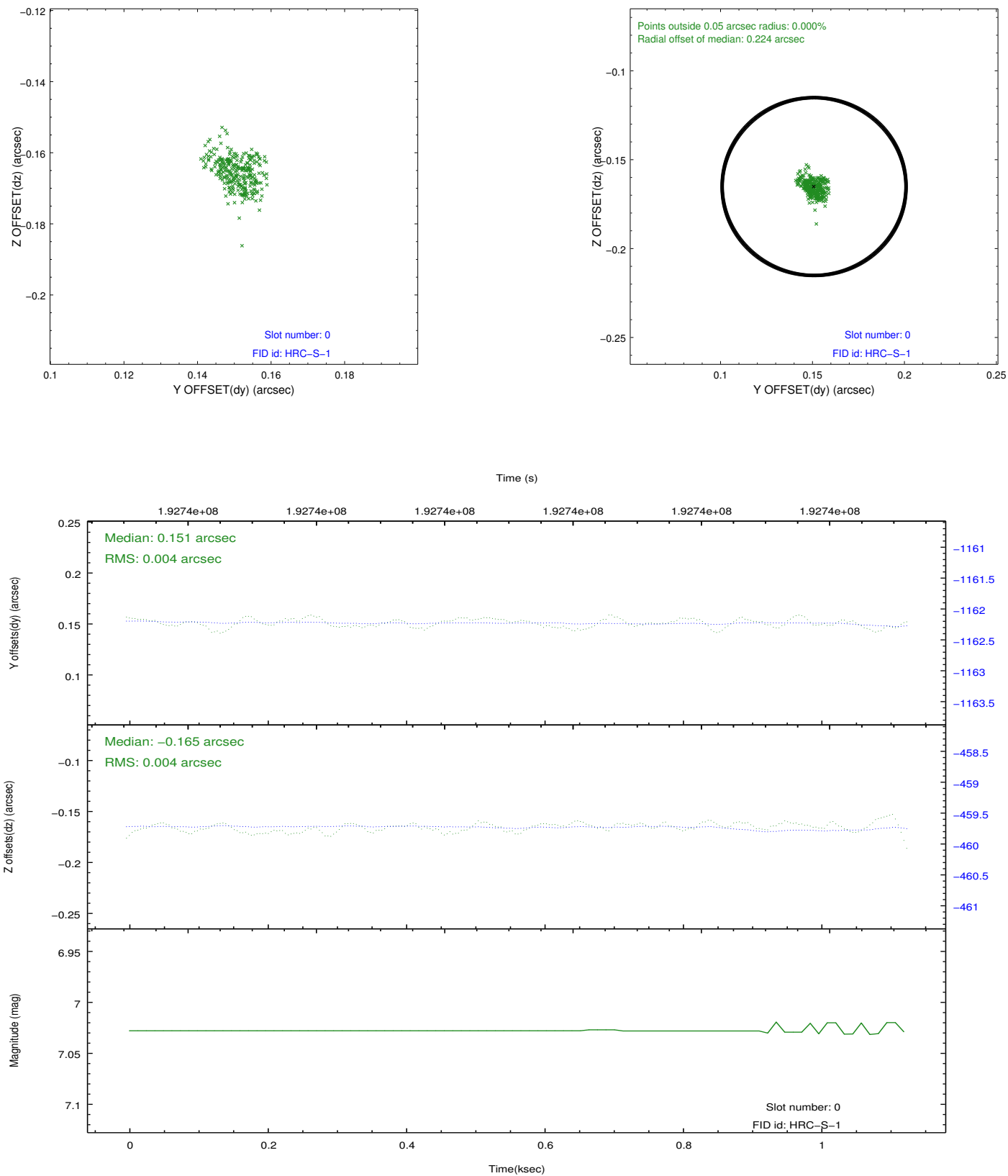


## 2.4.5 Slot 7

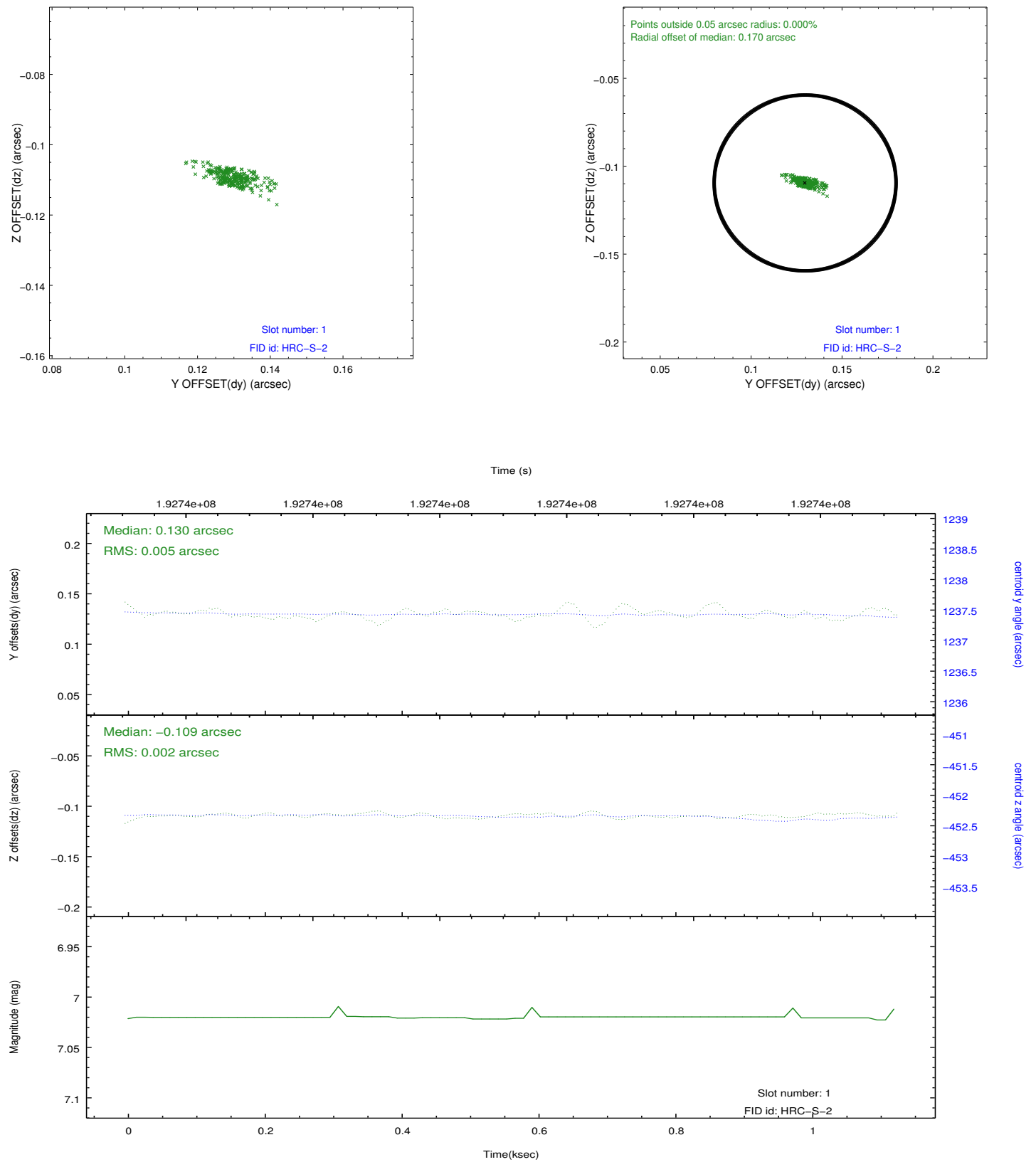


## 2.5 FID Slots

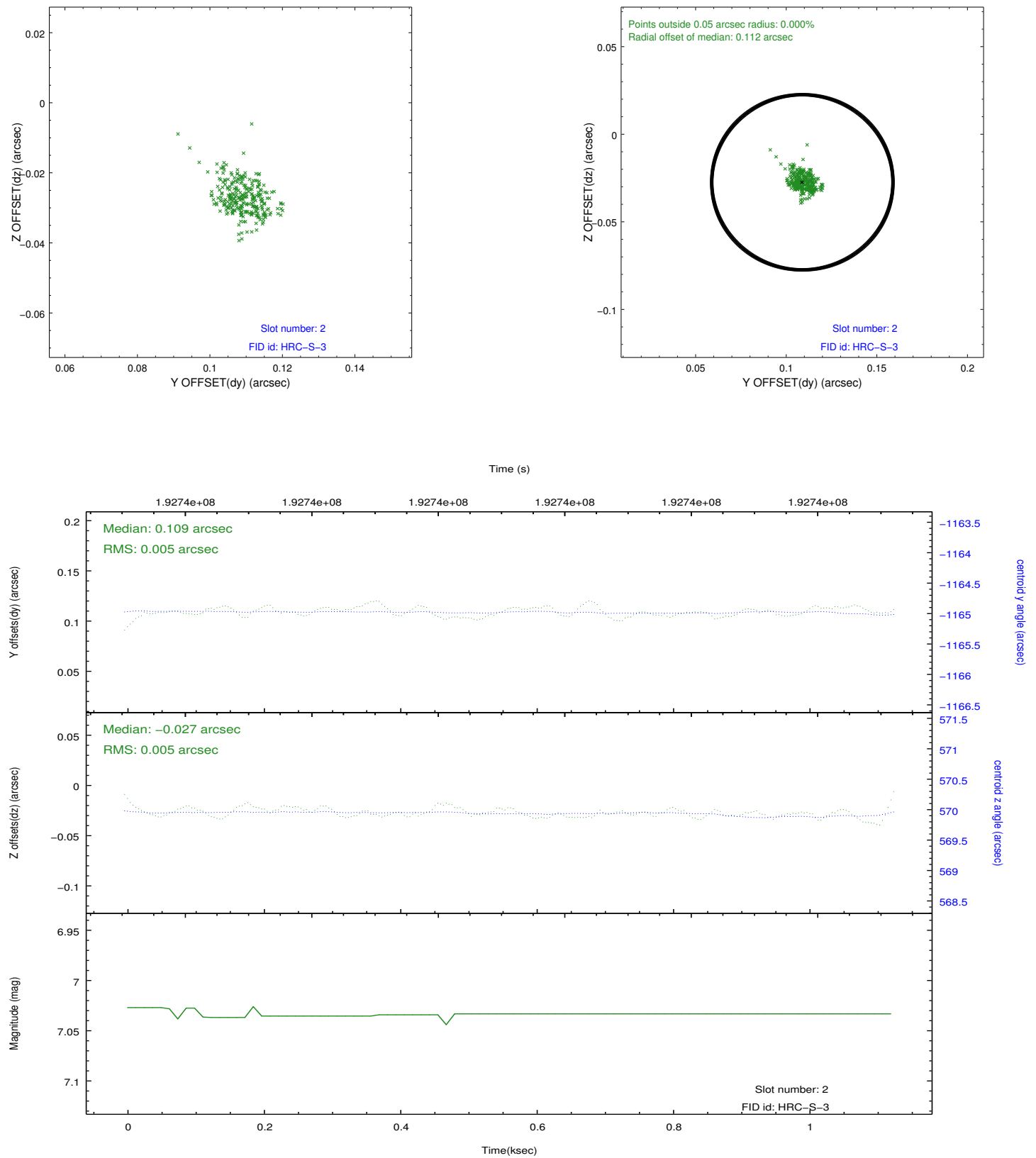
### 2.5.1 Slot 0



## 2.5.2 Slot 1



### 2.5.3 Slot 2



## **A Summary**

### **A.1 Status**

V&V Scientist	Jen Lauer
V&V Date (YYYY-MM-DD)	2012.12.11
V&V Edition	1
V&V Disposition and Status	OK
V&V Charge Time	1.088

### **A.2 Comments**