

# V&V Reference Report

## L2 ASCDS Version : 8.4.5

Observation 5056 - L2 Version 3  
Chandra X-Ray Center

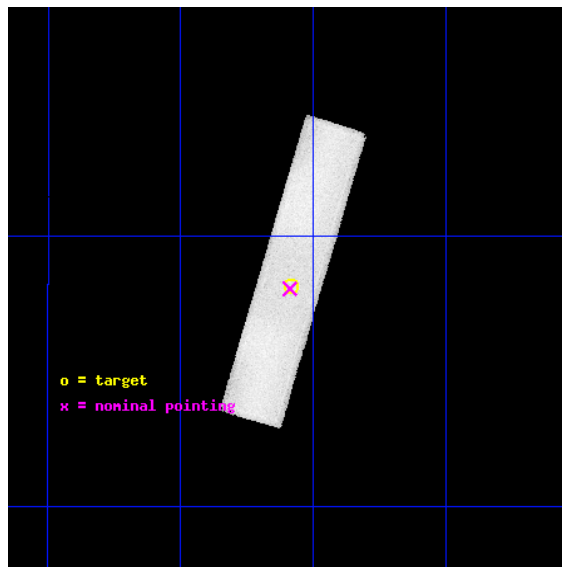
L2 Processing Date : Nov 11 2012

## Contents

<b>1</b>	<b>Front</b>	<b>2</b>
<b>2</b>	<b>OBI</b>	<b>3</b>
2.1	OBI . . . . .	3
2.1.1	Images . . . . .	3
2.1.2	Parameters . . . . .	4
2.1.3	Events . . . . .	4
2.2	Compared Parameters . . . . .	5
2.3	Aspect . . . . .	6
2.4	Star Slots . . . . .	9
2.4.1	Slot 3 . . . . .	9
2.4.2	Slot 4 . . . . .	10
2.4.3	Slot 5 . . . . .	11
2.4.4	Slot 6 . . . . .	12
2.4.5	Slot 7 . . . . .	13
2.5	FID Slots . . . . .	14
2.5.1	Slot 0 . . . . .	14
2.5.2	Slot 1 . . . . .	15
2.5.3	Slot 2 . . . . .	16
<b>A</b>	<b>Summary</b>	<b>17</b>
A.1	Status . . . . .	17
A.2	Comments . . . . .	17

# 1 Front

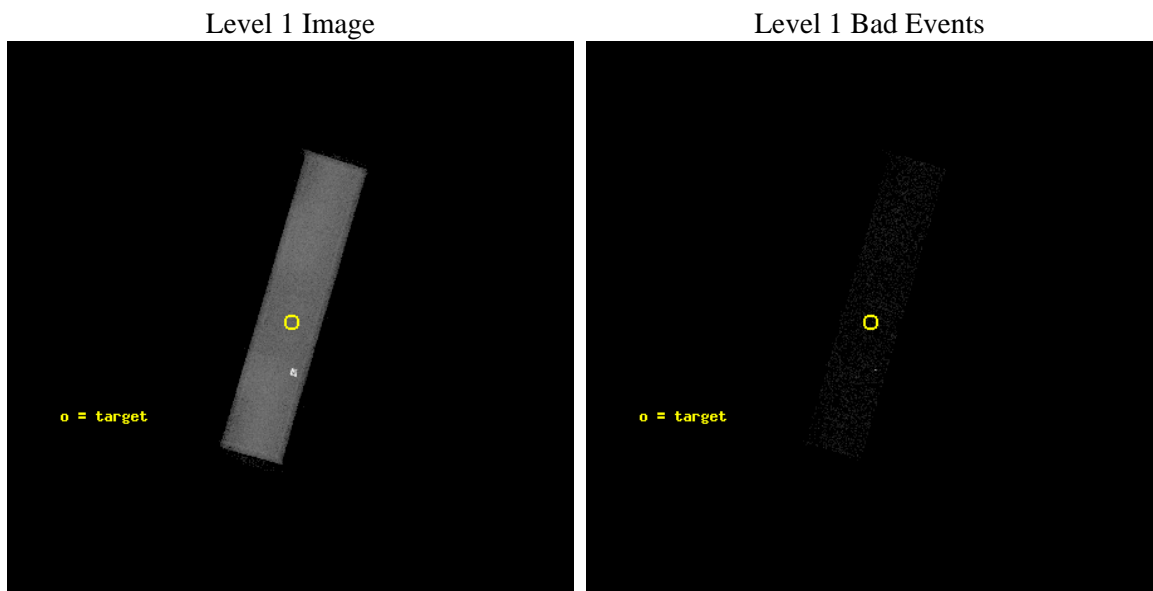
seq_num	290329	Sequence number
obs_id	5056	Observation id
title	AO5 Measurements of the optical/UV Transmission of the HRC and ACIS Filters.	Proposal title
observer	Dr. CXC Calibration	Principal investigator
object	Betelgeuse	Source name
ra_targ	88.792917	Observer's specified target RA [deg]
dec_targ	7.407056	Observer's specified target Dec [deg]
ra_nom	88.79416083062	Nominal RA [deg]
dec_nom	7.4027969793464	Nominal Dec [deg]
roll_nom	286.46750016465	Nominal Roll [deg]
revision	3	Processing version of data
ontime	1945.7063350379	[s]
livetime	1881.8309242878	Ontime multiplied by DTCOR
l2events	179473	Number of level 2 events



## 2 OBI

### 2.1 OBI

#### 2.1.1 Images



### 2.1.2 Parameters

obi_num	0	Obi number	sched_exp_time	2102.000000	[s] Scheduled observation exposure time
ascdsver	8.4.5	Processing system revision	ontime	1945.7063350379	[s]
caldbver	4.5.2	&#160	l1events	240904	Number of level 1 events
date	2012-11-11T14:28:08	Date and time of file creation			
revision	3	Processing version of data			

### 2.1.3 Events

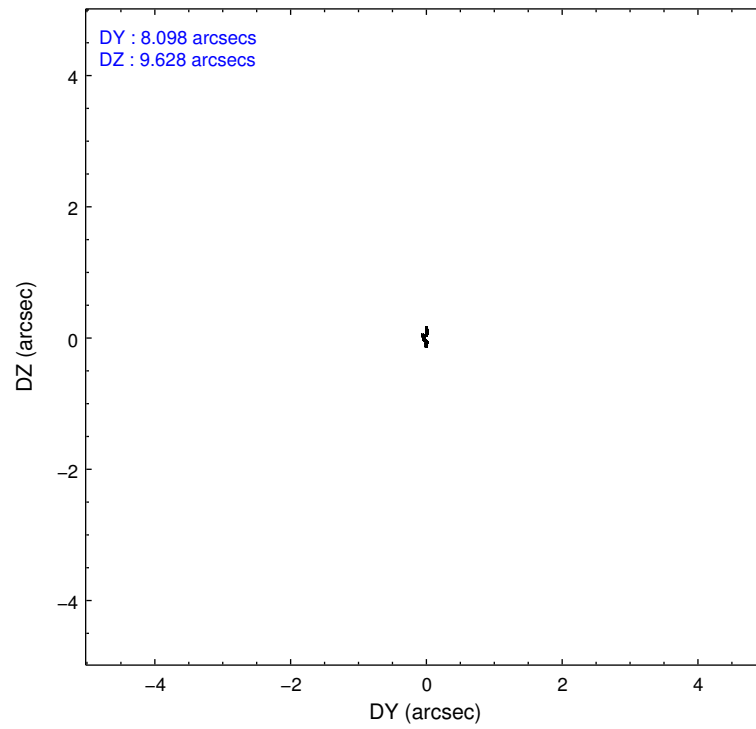
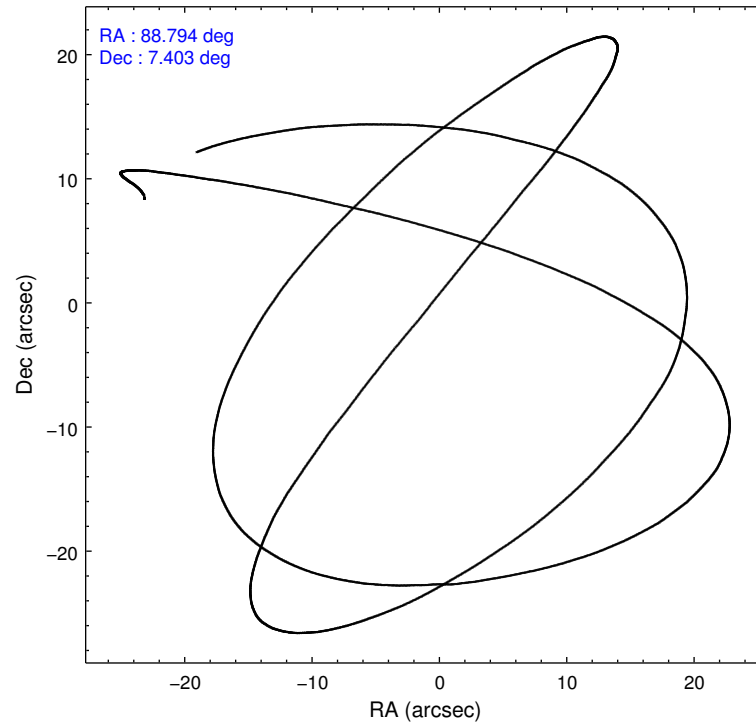
Level 1 Events

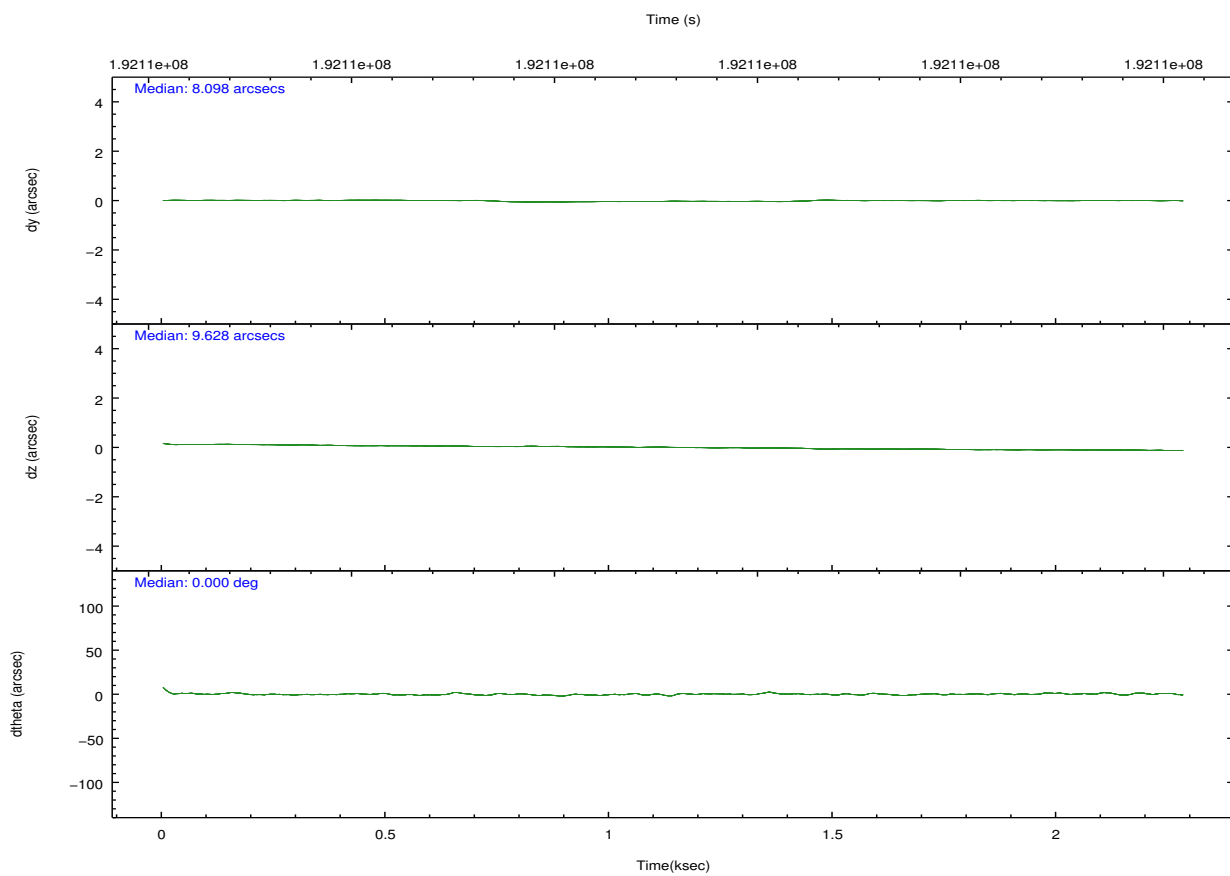
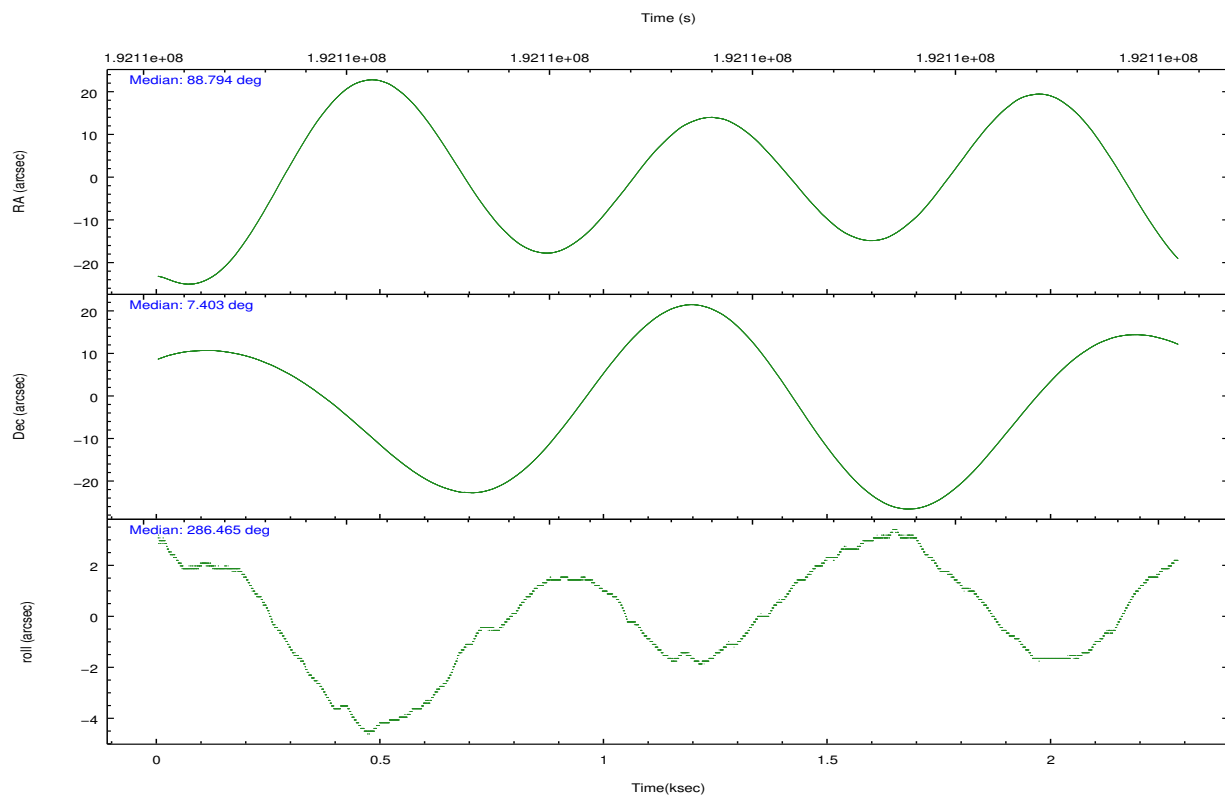
	<b>segment 1</b>	<b>segment 2</b>	<b>segment 3</b>
level 1 events	0	240904	0
rejected events	0	14275	0
rejected %	0%	5%	0%

## 2.2 Compared Parameters

Parameter	Planned	Actual	Parameter	Planned	Actual
Instrument	HRC	HRC	Obspar format version number	7	7
Detector	HRC-S	HRC-S	Obspar file type	PREDICTED	ACTUAL
Grating	NONE	NONE	Obspar update status	NONE	UPDATED
Data mode	OBSERVING	OBSERVING			
Observation mode	POINTING	POINTING			
[deg] Pointing RA	88.772253	88.79416083062033			
[deg] Pointing Dec	7.421172	7.402796979346355			
[deg] Pointing Roll	286.402971	286.4675001646453			
[s] Window start time (MET)	191980864.184000	191980864.184000			
[s] Window stop time (MET)	197078464.184000	197078464.184000			
[mm] SIM focus pos	-1.429586	-1.428180813131781			
[mm] SIM defocus	0.1037507710433287	0.1051558262725154			
[mm] SIM translation stage pos	250.455976	250.466033080201			
[mm] SIM translation stage offset	0	-0.01005468664627074			
[s] Observation start time (MET)	192105831.184000	192105457.04516			
Observation start date	2004-02-02T10:42:47	2004-02-02T10:37:37			
[s] Observation end time (MET)	192107933.184000	192108066.69527			
Observation end date	2004-02-02T11:17:49	2004-02-02T11:21:06			

## 2.3 Aspect





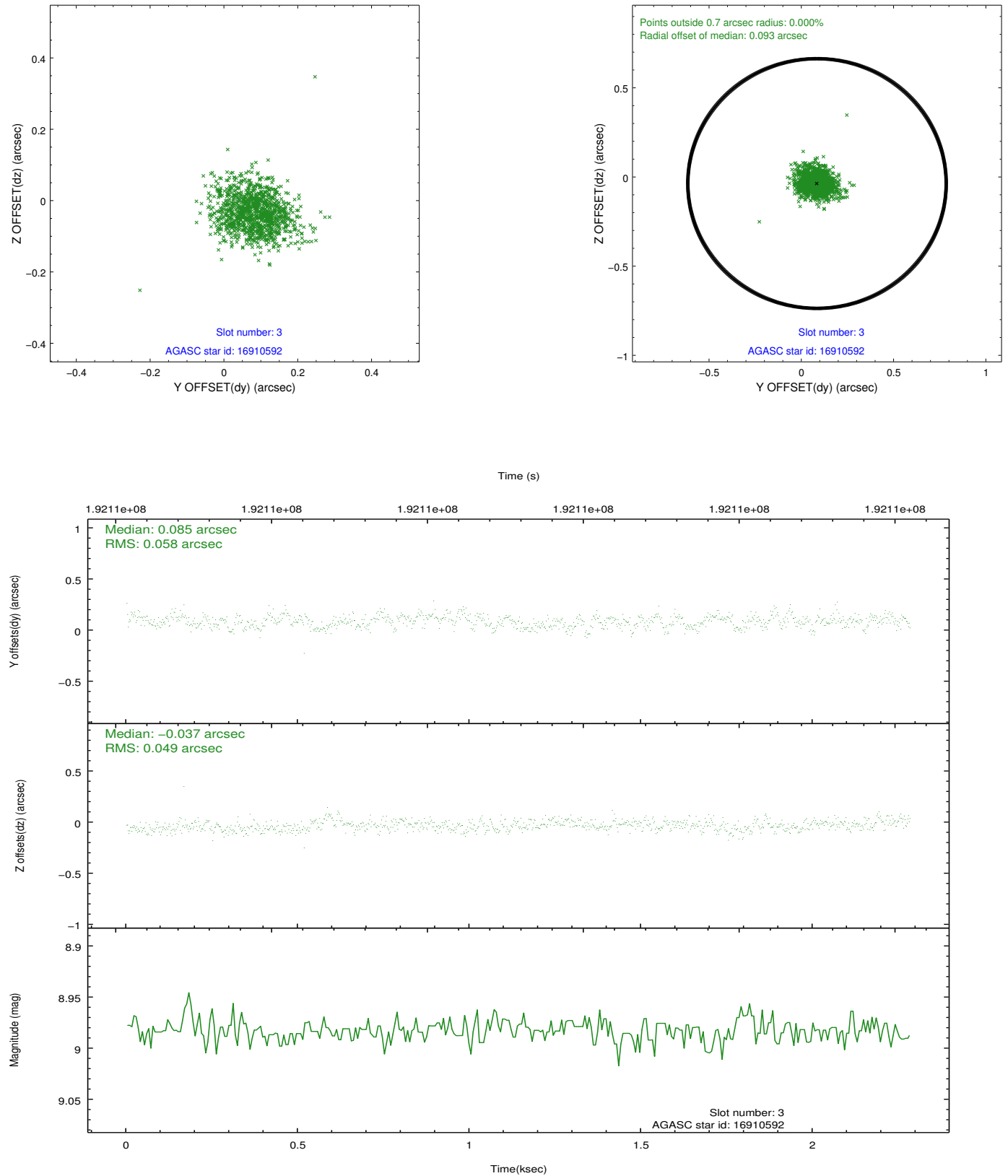
Slot Statistics

slot	status	id	mag	n_pts	med_dy	med_dz	dr1	dr2	ra	dec	mean_y	mean_z
0	FID	HRC-S-2	7.08	557	0.147	-0.132	0.011	0.018	0.000000	0.000000	1237.40	-450.99
1	FID	HRC-S-3	7.09	556	0.070	-0.093	0.005	0.010	0.000000	0.000000	-1162.79	570.56
2	FID	HRC-S-4	7.07	557	0.188	-0.070	0.011	0.018	0.000000	0.000000	1234.00	574.82
3	GUIDE	16910592	8.98	1112	0.085	-0.037	0.079	0.128	88.532936	6.726769	2157.78	-1526.88
4	GUIDE	16913360	8.33	1114	0.015	0.011	0.061	0.100	89.178373	7.247125	1013.20	1213.08
5	GUIDE	16918912	8.66	1114	0.101	0.084	0.064	0.102	89.257075	6.922287	2213.56	1156.36
6	GUIDE	93854800	7.57	1114	-0.124	-0.112	0.053	0.092	88.376308	7.655454	-1205.25	-1116.20
7	GUIDE	93855160	8.50	1113	-0.071	0.052	0.062	0.105	88.514904	7.713359	-1268.44	-584.81

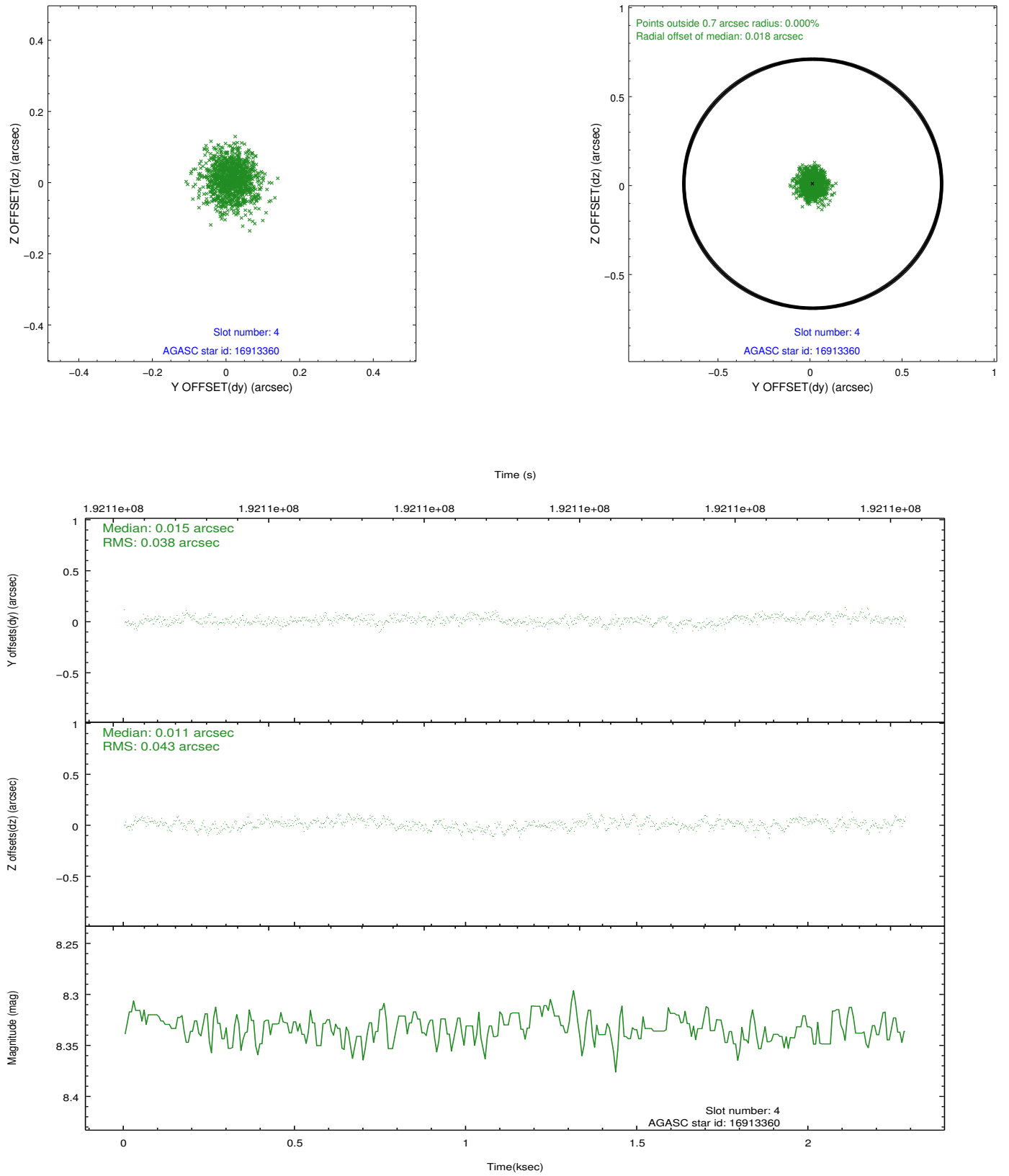


## 2.4 Star Slots

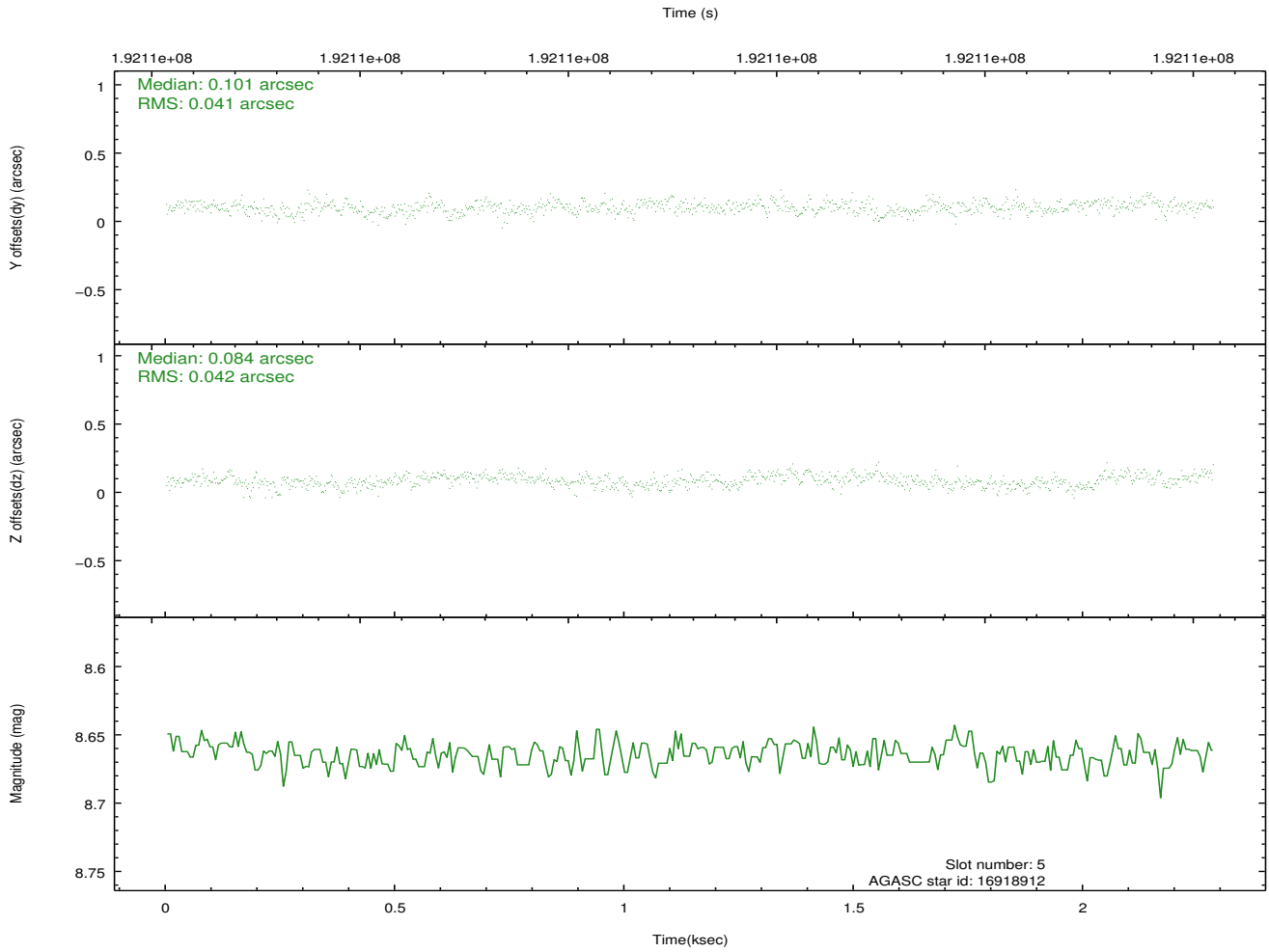
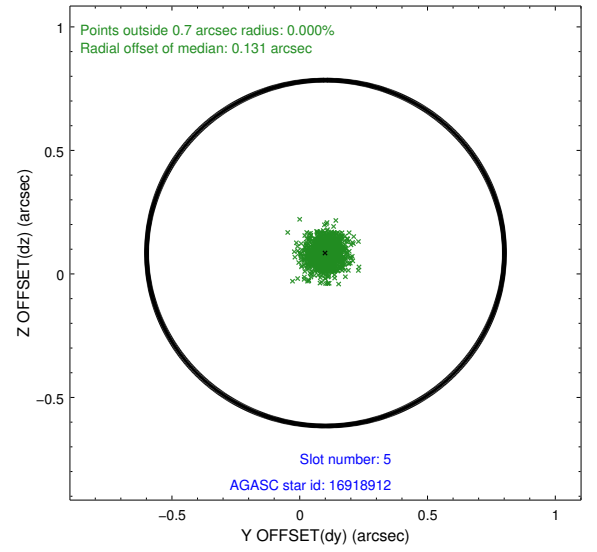
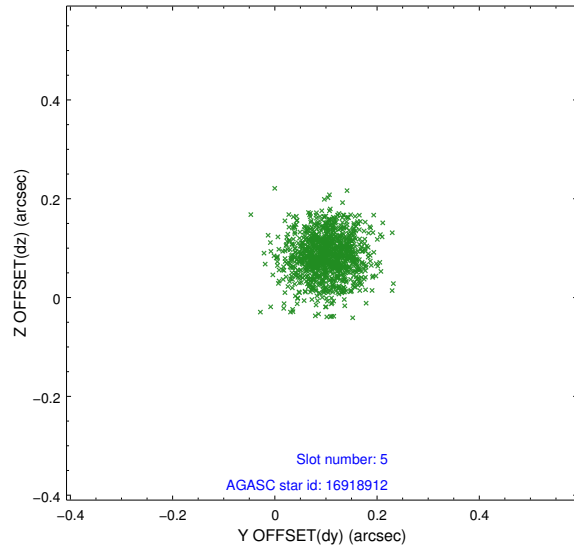
### 2.4.1 Slot 3



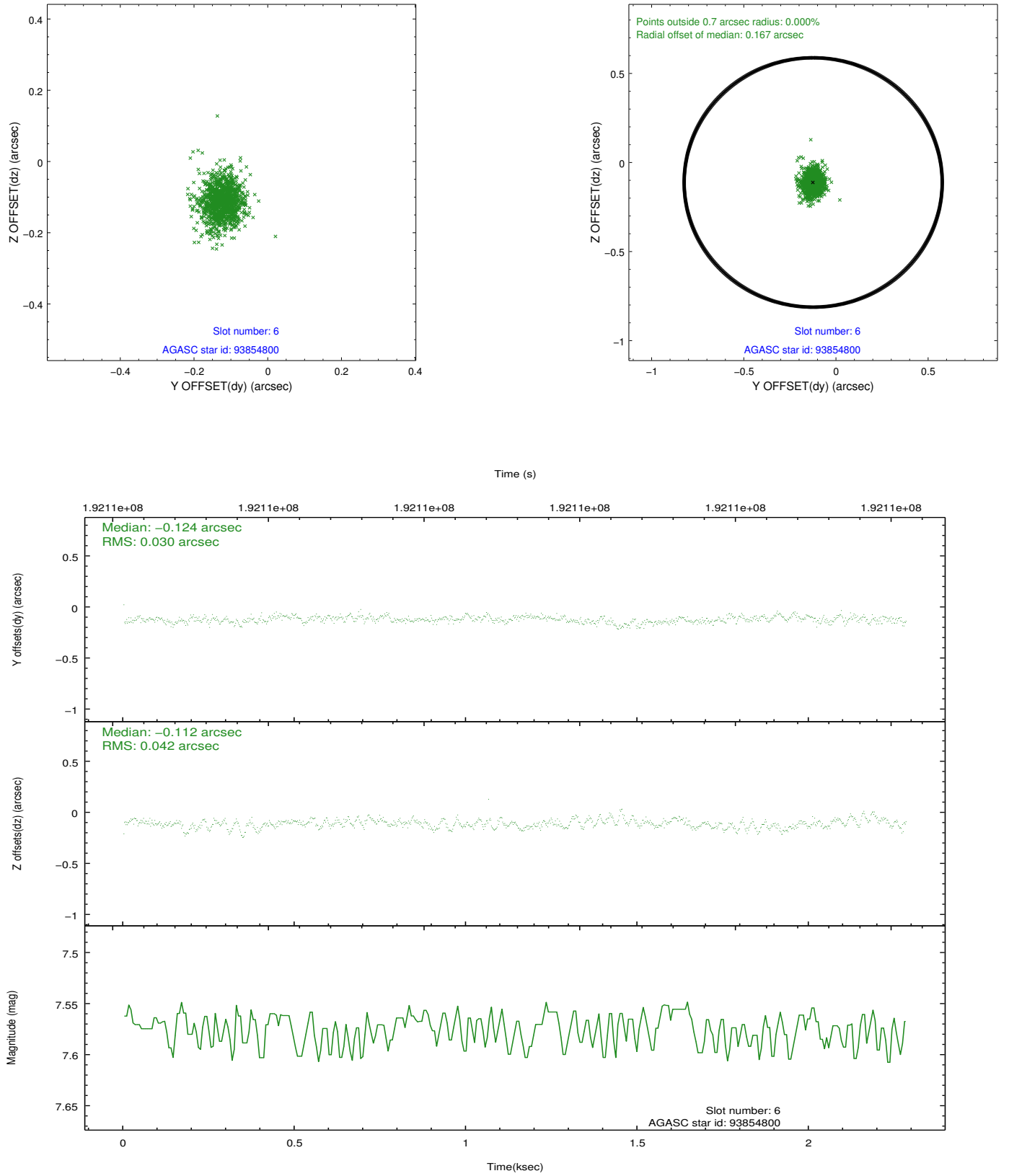
## 2.4.2 Slot 4



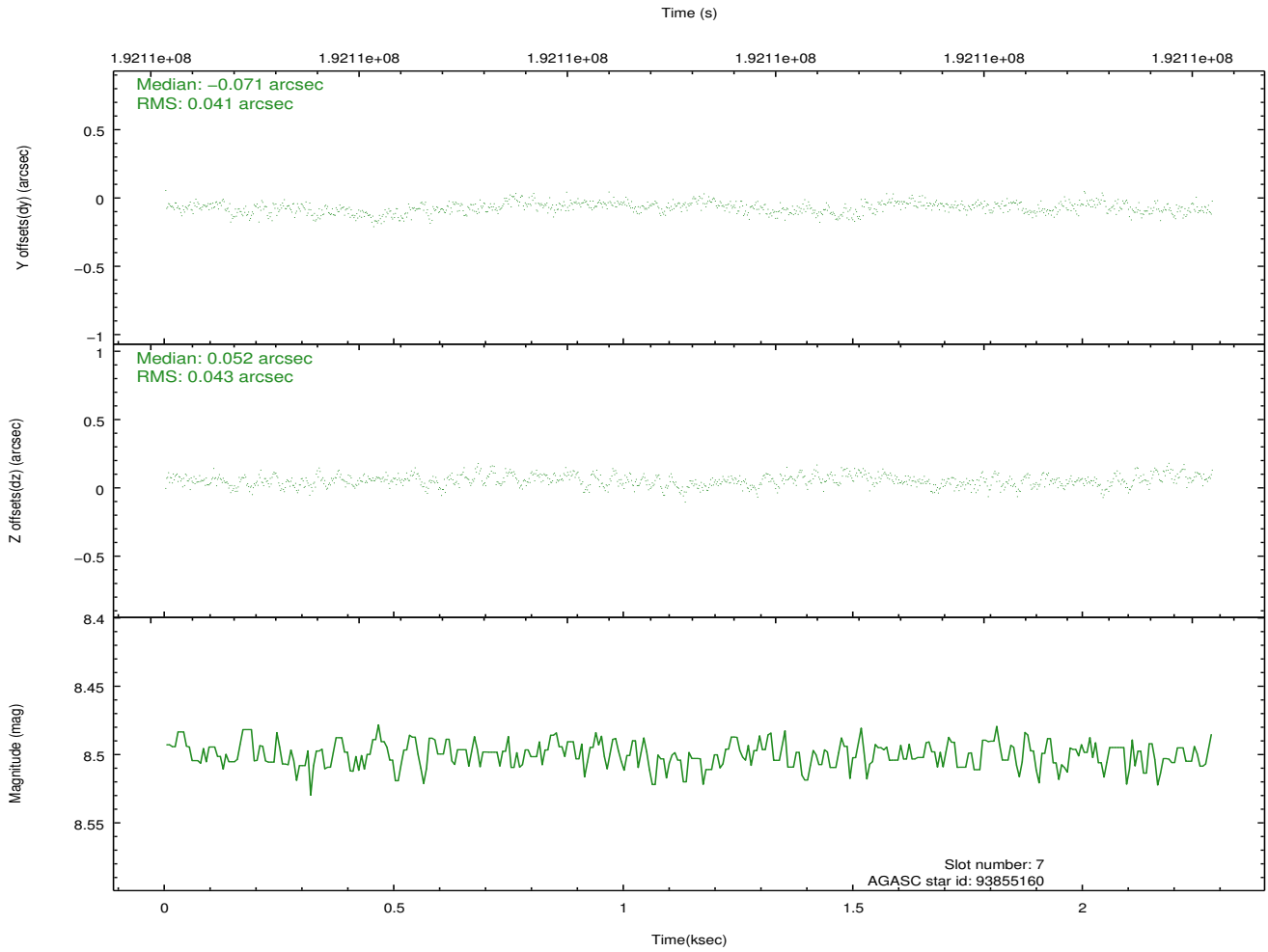
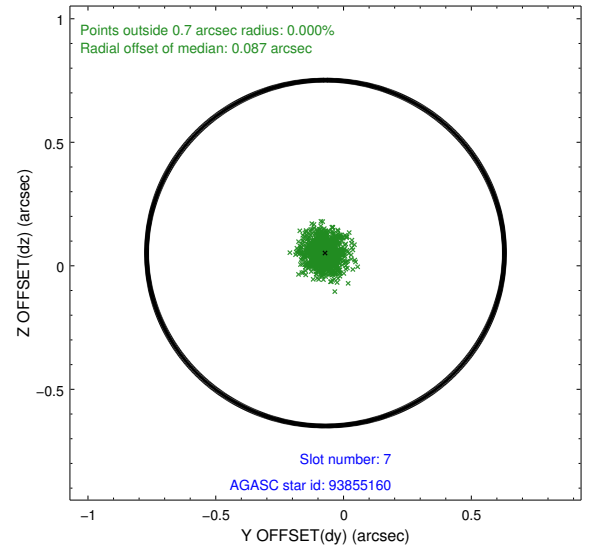
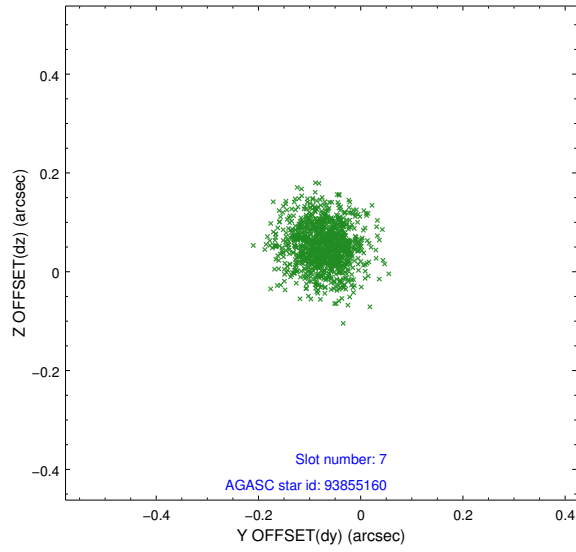
### 2.4.3 Slot 5



## 2.4.4 Slot 6

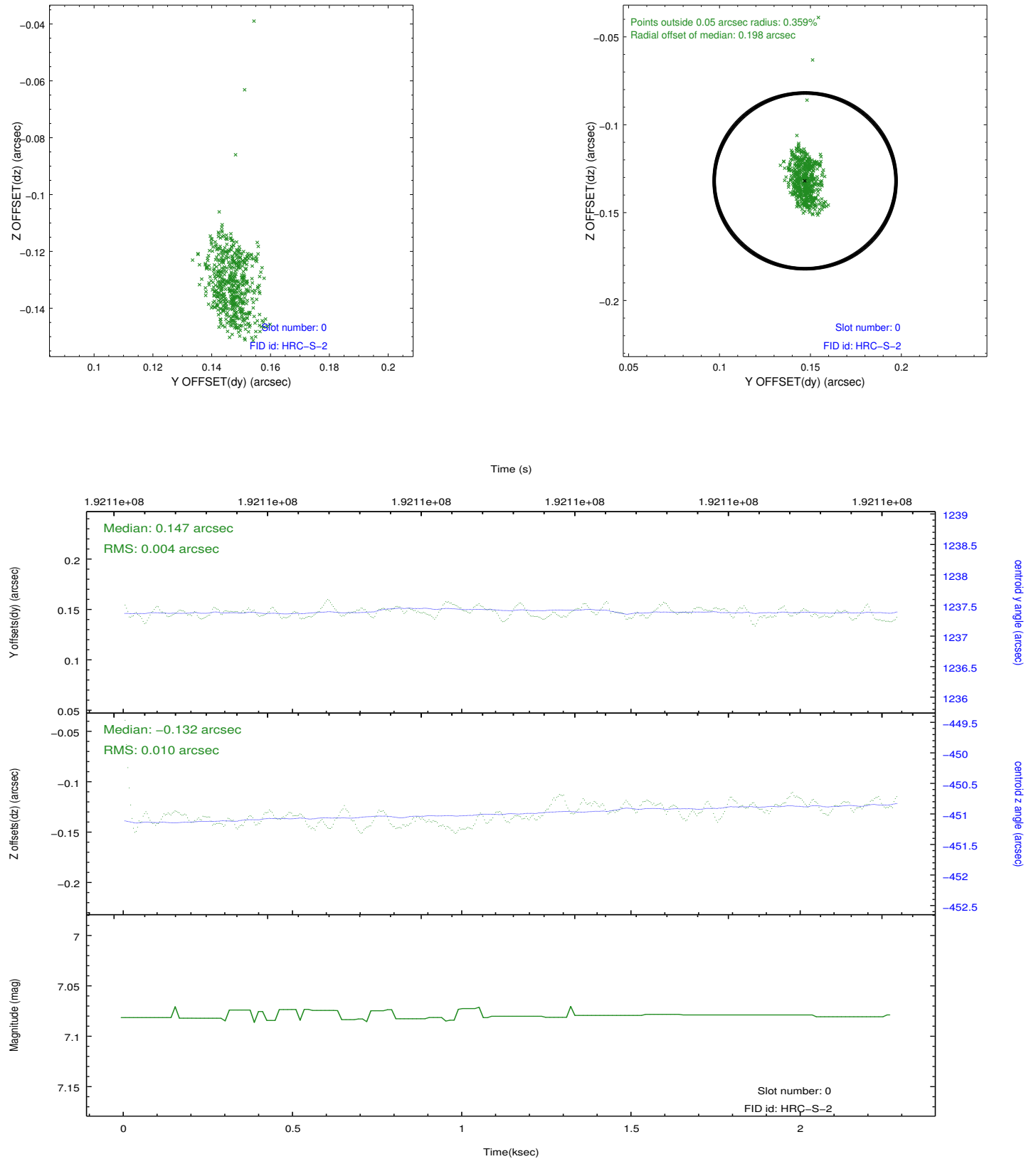


## 2.4.5 Slot 7

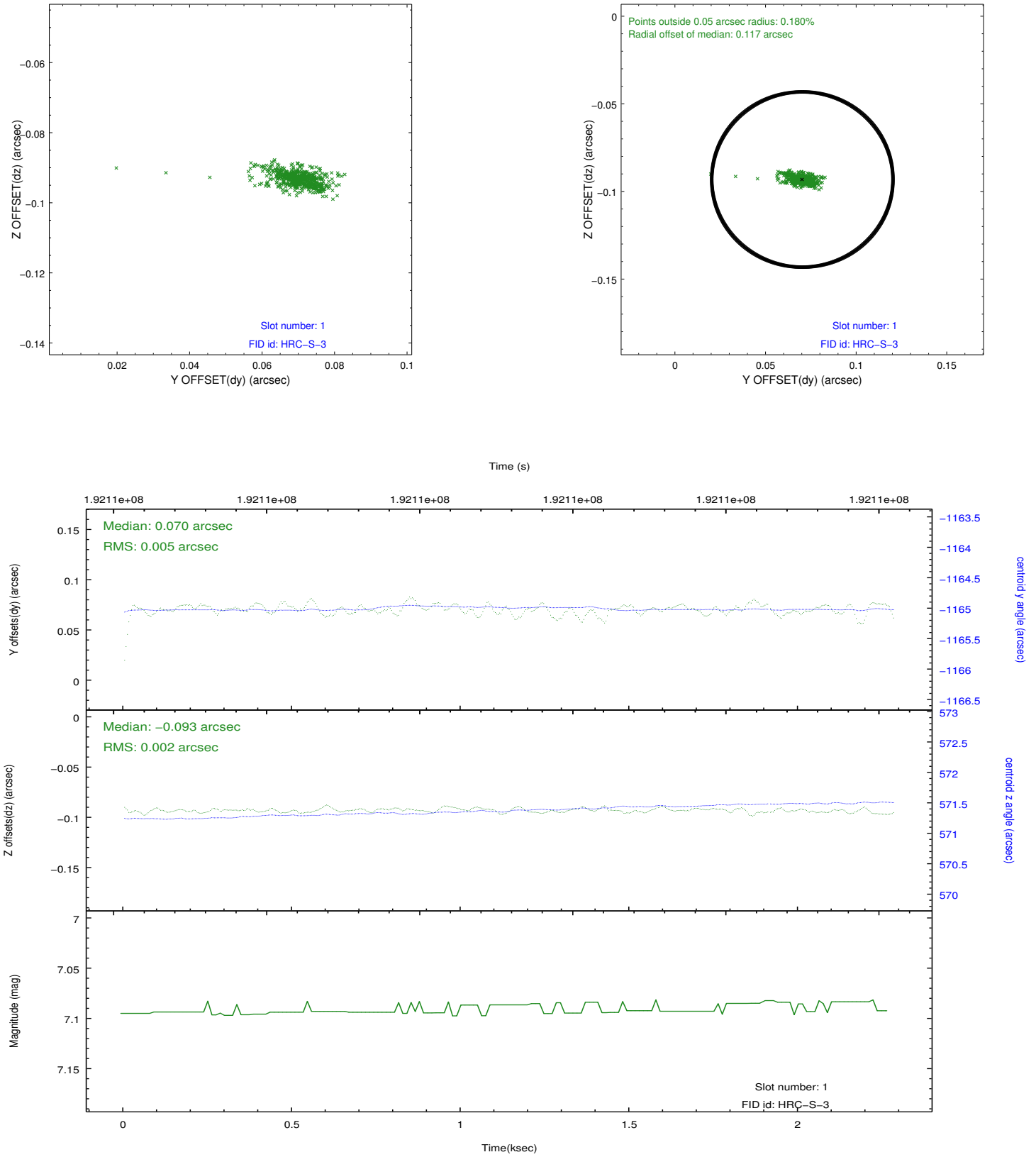


## 2.5 FID Slots

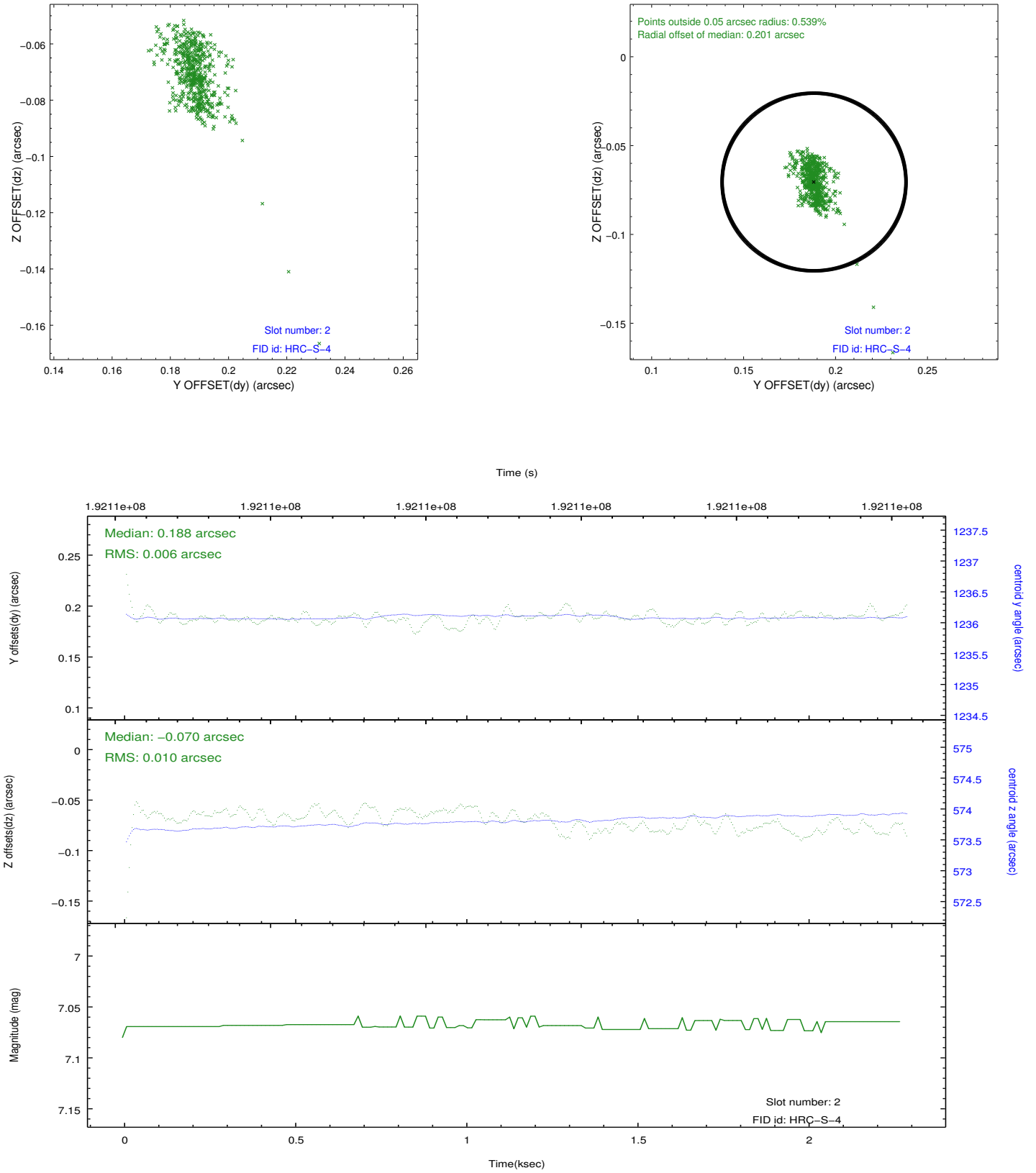
### 2.5.1 Slot 0



## 2.5.2 Slot 1



### 2.5.3 Slot 2





## A Summary

### A.1 Status

V&V Scientist	Jen Lauer
V&V Date (YYYY-MM-DD)	2012.12.10
V&V Edition	1
V&V Disposition and Status	OK
V&V Charge Time	1.945

### A.2 Comments

Window constraint satisfied.