

# V&V Reference Report

## L2 ASCDS Version : 7.6.7.2

Observation 4916 - L2 Version 001  
Chandra X-Ray Center

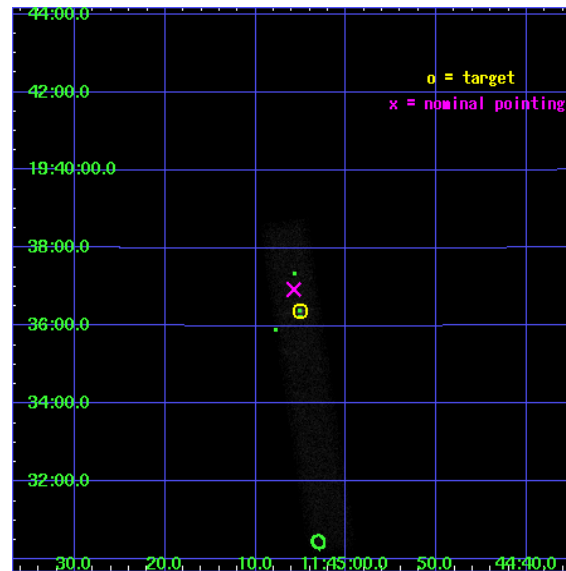
L2 Processing Date : Jun 7 2006

## Contents

<b>1</b>	<b>Front</b>	<b>2</b>
<b>2</b>	<b>OBI</b>	<b>3</b>
2.1	OBI . . . . .	3
2.1.1	Images . . . . .	3
2.1.2	Bias . . . . .	3
2.1.3	Parameters . . . . .	4
2.1.4	Events . . . . .	4
2.2	Compared Parameters . . . . .	5
2.3	Aspect . . . . .	6
2.4	Star Slots . . . . .	9
2.4.1	Slot 3 . . . . .	9
2.4.2	Slot 4 . . . . .	10
2.4.3	Slot 5 . . . . .	11
2.4.4	Slot 6 . . . . .	12
2.4.5	Slot 7 . . . . .	13
2.5	FID Slots . . . . .	14
2.5.1	Slot 0 . . . . .	14
2.5.2	Slot 1 . . . . .	15
2.5.3	Slot 2 . . . . .	16
<b>3</b>	<b>Point Sources</b>	<b>17</b>
<b>A</b>	<b>Summary</b>	<b>18</b>
A.1	Status . . . . .	18
A.2	Comments . . . . .	18

# 1 Front

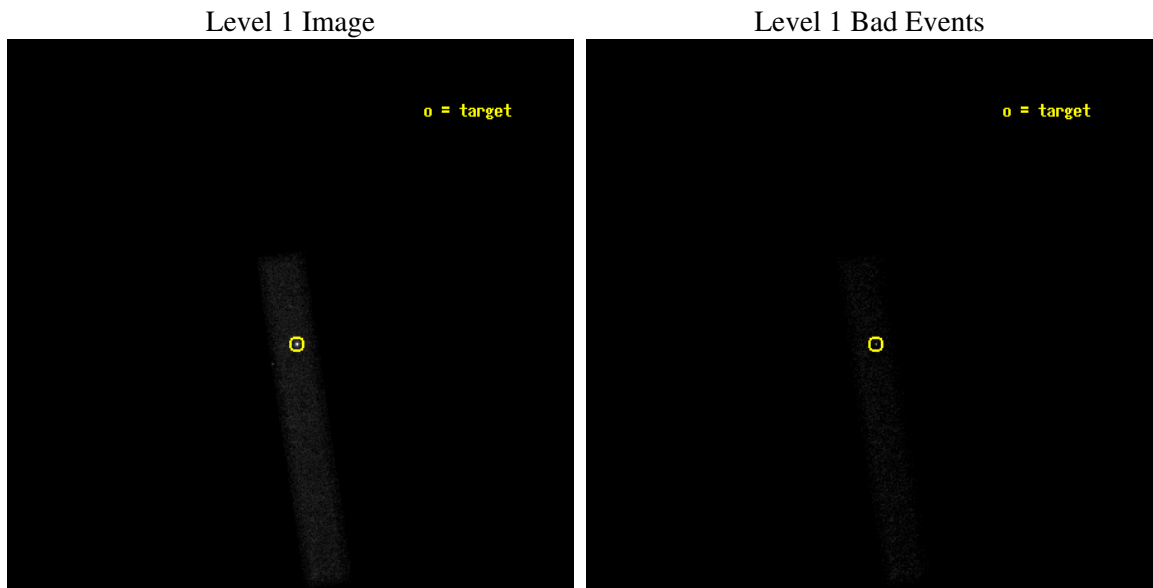
seq_num	700997
obs_id	4916
title	The Structure and Physics of Extragalactic Jets
observer	Dr. Eric Perlman
object	3C264
dtcycle	0
cycle	P
ra_targ	176.270833
dec_targ	19.606389
ra_nom	176.27409141573
dec_nom	19.615524405213
roll_nom	81.490791936627
revision	2
ontime	38325.20057109
livetime	34758.933948023
ontime7	38325.20057109
l2events	34287



## 2 OBI

### 2.1 OBI

#### 2.1.1 Images



#### 2.1.2 Bias

Chip 7



### 2.1.3 Parameters

obi_num	1
ascdsver	7.6.7.2
caldbver	3.2.2
date	2006-06-07T02:46:32
revision	2

sched_exp_time	38039.108000
ontime	38898.448237658
ontime7	38898.448237658
l1events	58713

### 2.1.4 Events

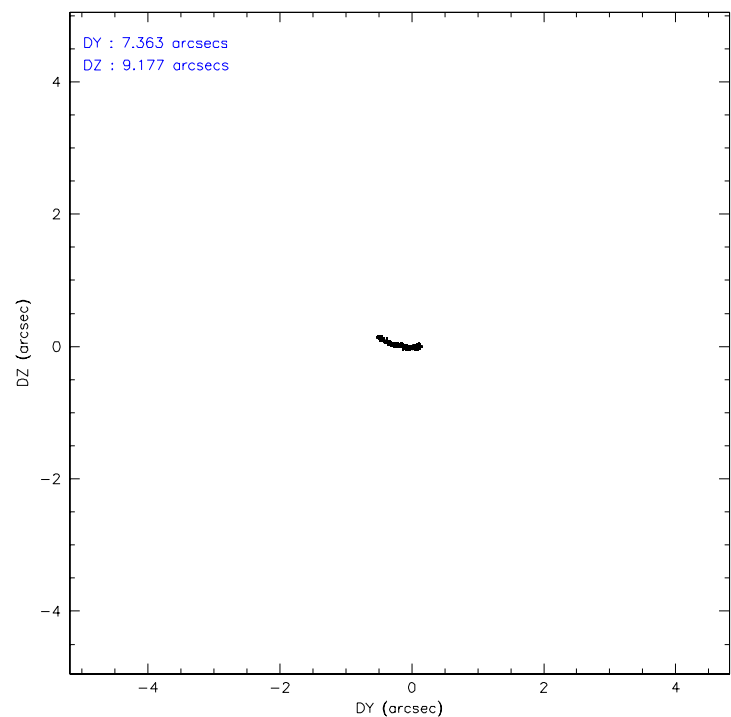
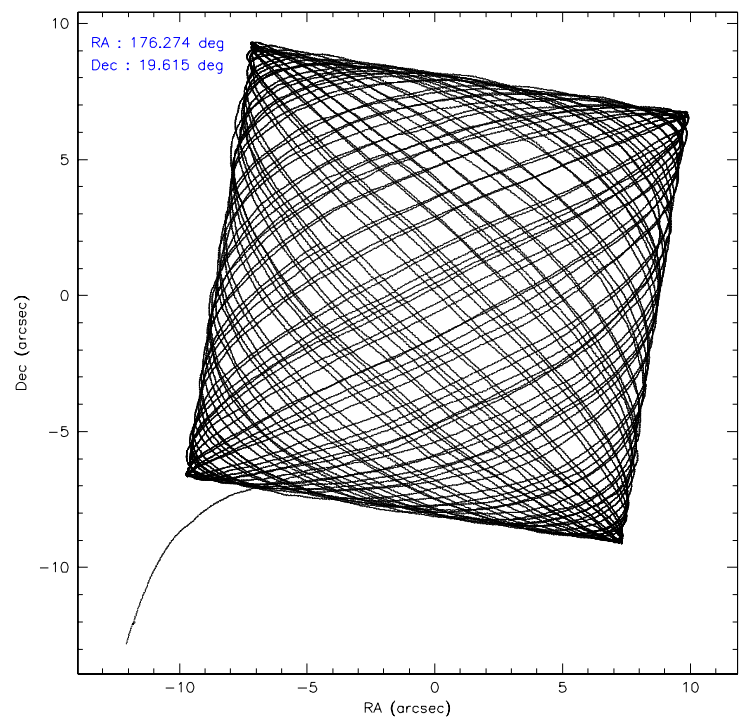
	<b>ccd 7</b>
level 1 events	58713
rejected events	23493
rejected %	40%

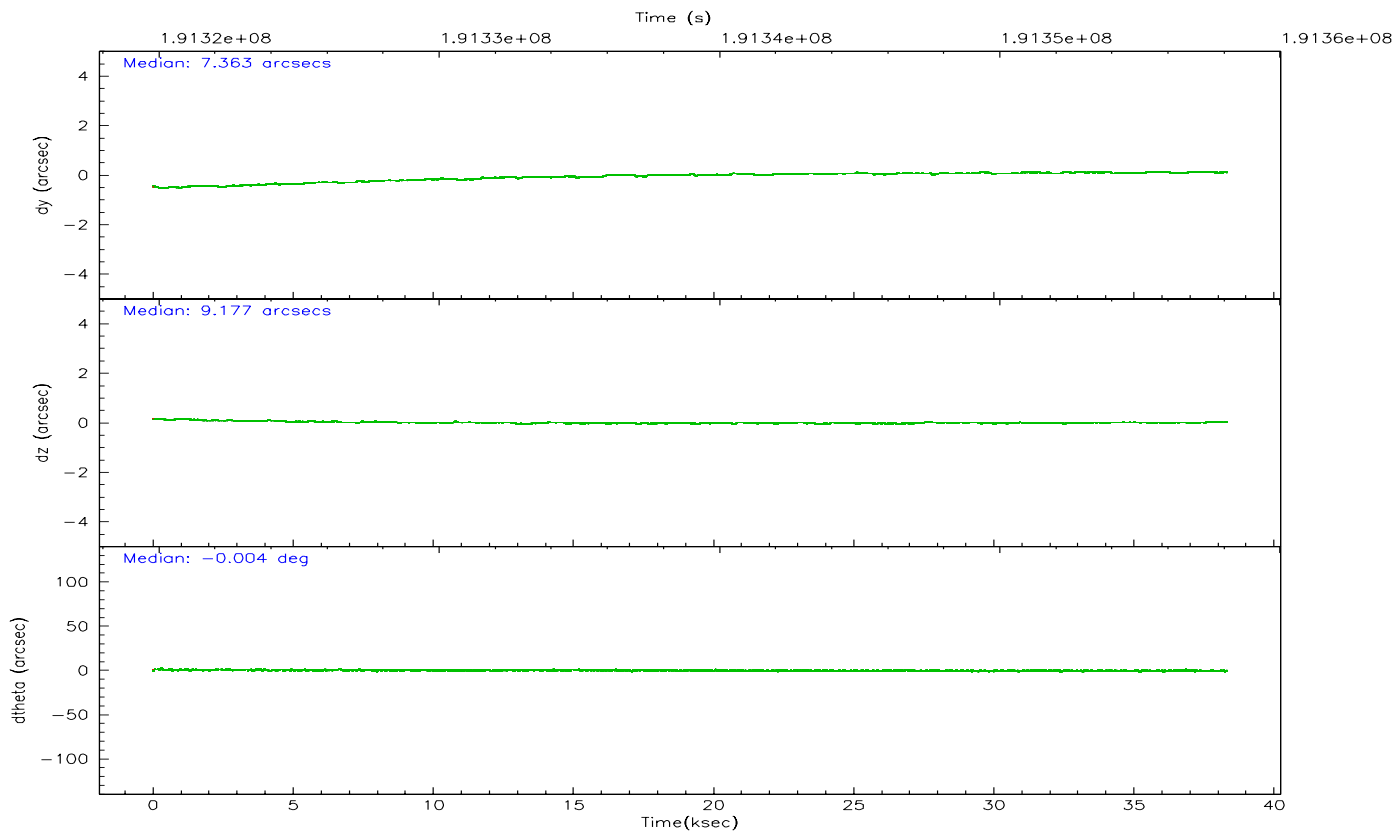
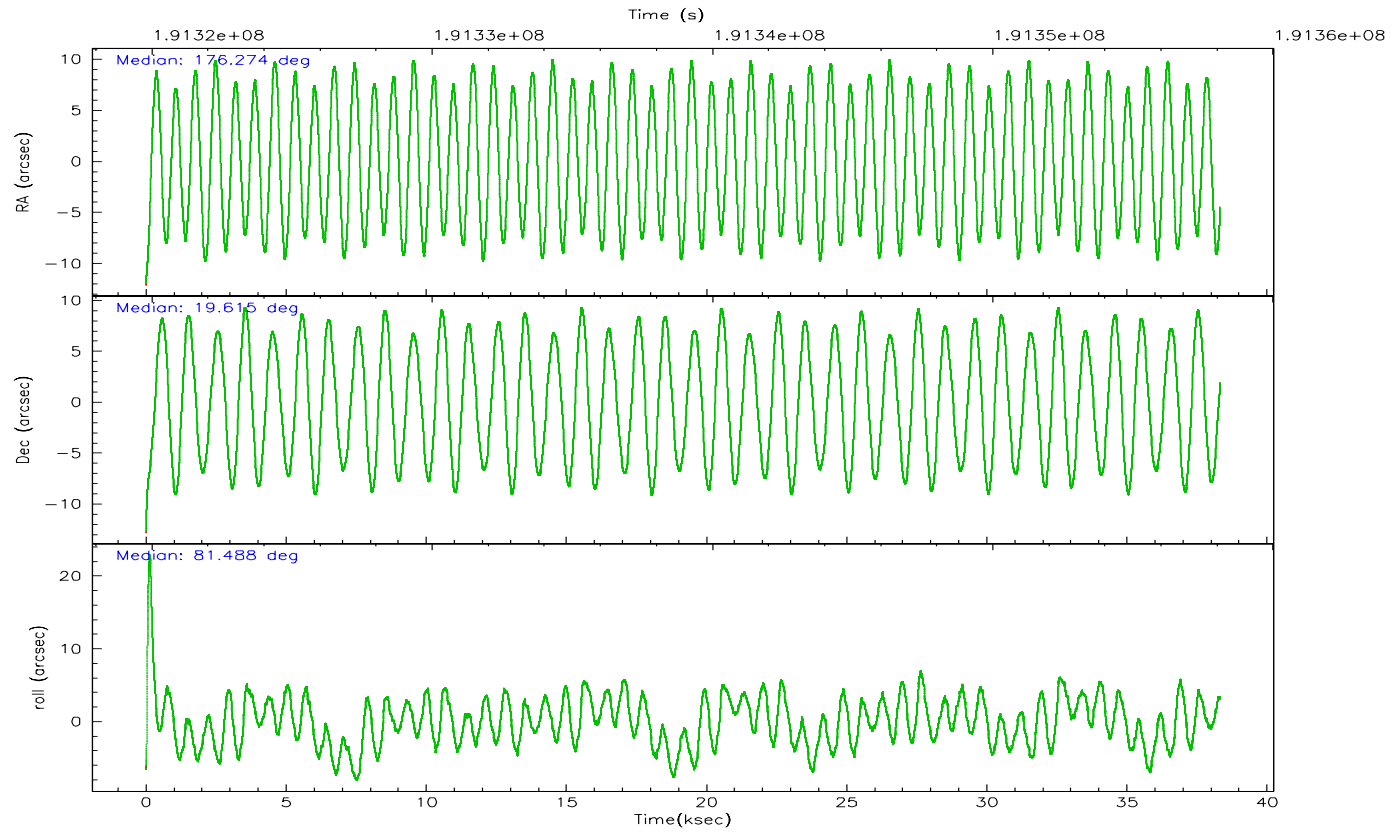
	<b>ccd 7</b>
grade 0 events	7630
	12%
grade 1 events	78
	0%
grade 2 events	8434
	14%
grade 3 events	3888
	6%
grade 4 events	3715
	6%
grade 5 events	3109
	5%
grade 6 events	11887
	20%
grade 7 events	19972
	34%

## 2.2 Compared Parameters

Parameter	Planned	Actual	Parameter	Planned	Actual
Instrument	ACIS	ACIS	Obspar format version number	6	6
Detector	ACIS-7	ACIS-7	Obspar file type	PREDICTED	ACTUAL
Grating	NONE	NONE	Obspar update status	NONE	UPDATED
Data mode	FAINT	FAINT	On-chip summing requested	N	N
Observation mode	POINTING	POINTING	Subarray requested	1/8	1/8
Pointing RA	176.285057	176.2740914157316	Subarray start row	0	449
Pointing Dec	19.590356	19.61552440521295	Subarray row count	1024	128
Pointing Roll	81.330494	81.49079193662682	Alternating exposures requested	N	N
SIM focus pos (mm)	-0.684267	-0.6828225247311905	Primary exposure time	0.000000	0.4
SIM defocus (mm)	0	0.001444936568705701			
SIM translation stage pos (mm)	-190.132523	-190.1425803651734			
SIM translation stage offset (mm)	0	0.01005778216563158			
Observation start time	191320080.184000	191319064.71081			
Observation start date	2004-01-24T08:26:56	2004-01-24T08:11:04			
Observation end time	191358119.184000	191359903.27509			
Observation end date	2004-01-24T19:00:55	2004-01-24T19:31:43			
Read mode	TIMED	TIMED			

2.3 Aspect



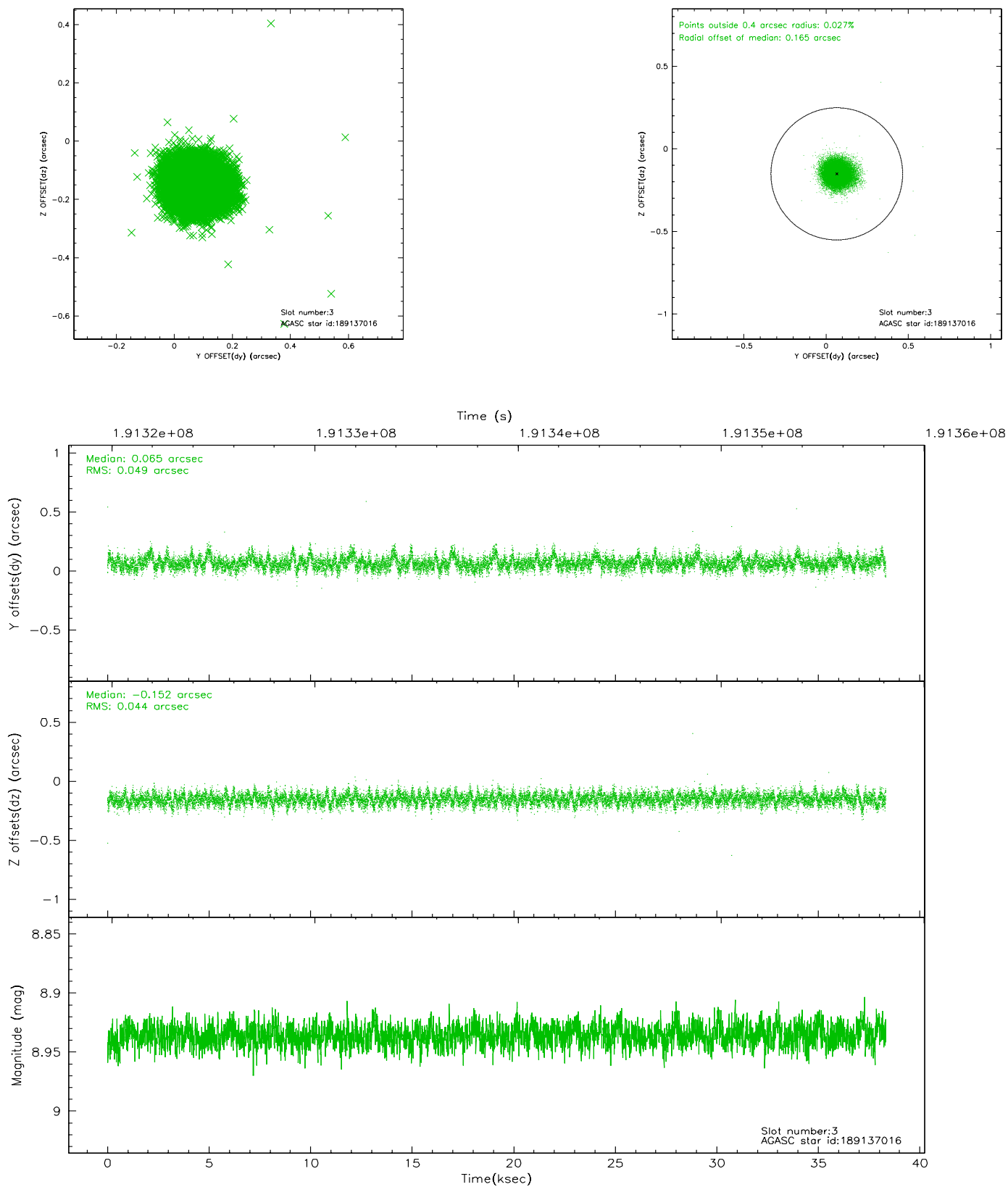


### Slot Statistics

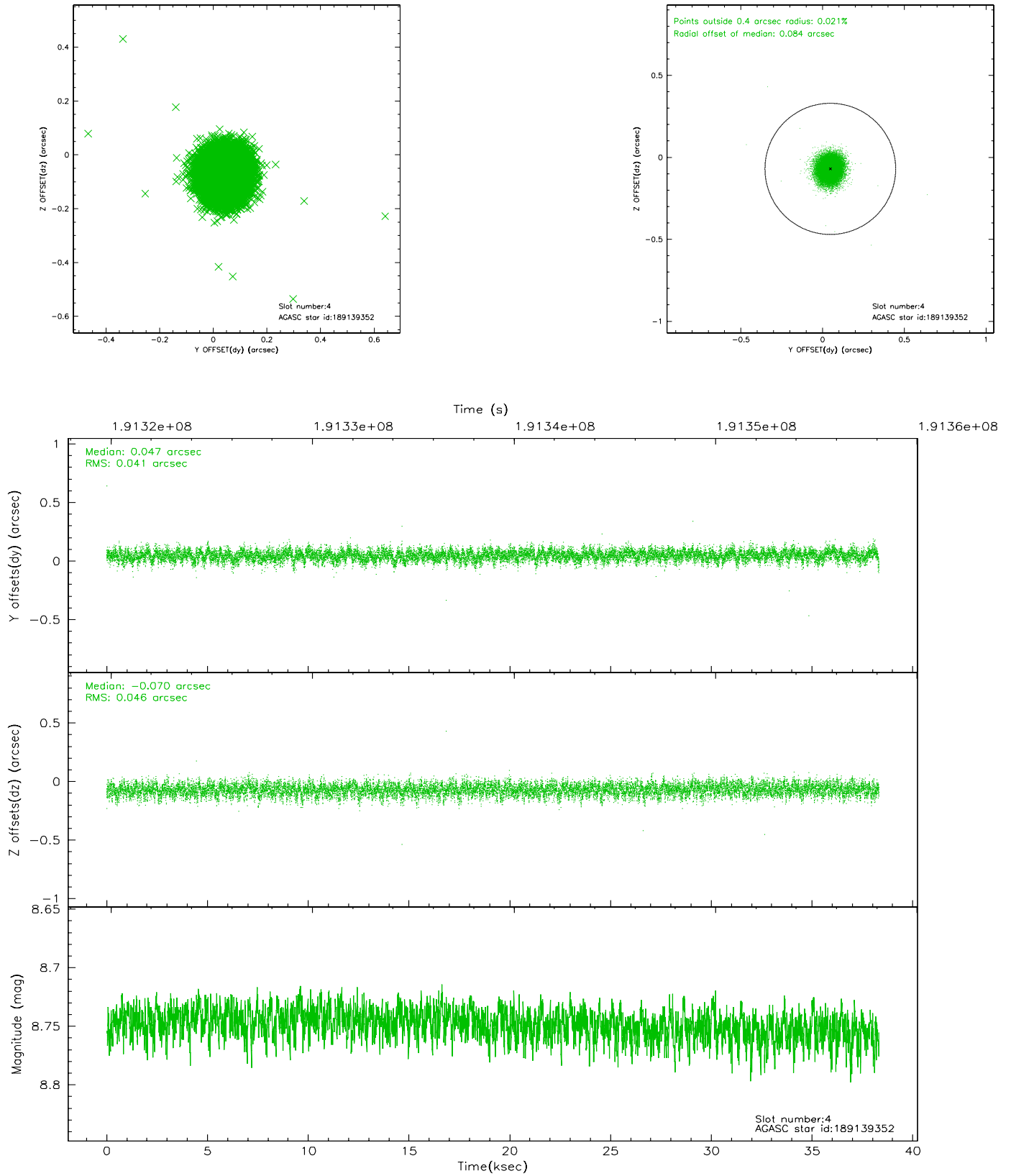
slot	status	id	mag	n_pts	med_dy	med_dz	dr1	dr2	ra	dec	mean_y	mean_z
0	FID	ACIS-S-2	7.10	9348	0.008	0.003	0.007	0.012	0.000000	0.000000	-760.03	-1730.36
1	FID	ACIS-S-5	7.24	9348	-0.020	0.019	0.009	0.015	0.000000	0.000000	-1813.20	171.60
2	FID	ACIS-S-6	7.35	9347	-0.013	-0.014	0.006	0.010	0.000000	0.000000	401.52	815.51
3	GUIDE	189137016	8.94	18692	0.065	-0.152	0.070	0.113	176.017714	19.173647	-1618.92	672.70
4	GUIDE	189139352	8.75	18693	0.047	-0.070	0.065	0.105	176.255936	19.500124	-335.66	48.96
5	GUIDE	189141640	10.11	18676	0.020	0.137	0.134	0.223	176.773230	19.061725	-1628.17	-1928.31
6	GUIDE	189152088	8.51	18692	0.019	-0.009	0.088	0.137	176.796455	19.306289	-746.09	-1871.17
7	GUIDE	189138768	9.66	18628	-0.151	0.094	0.106	0.176	176.878887	20.051086	1946.14	-1734.44

## 2.4 Star Slots

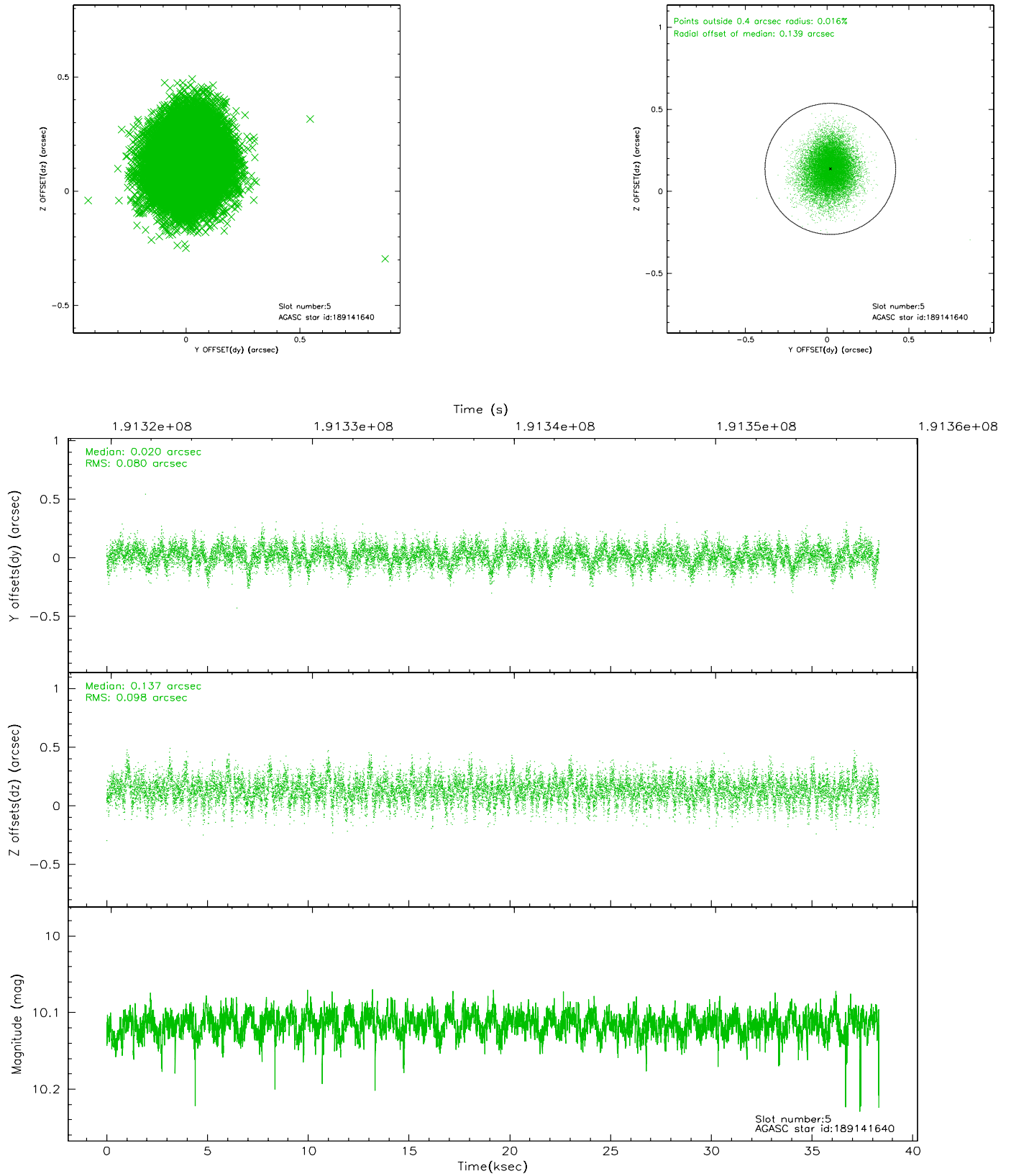
### 2.4.1 Slot 3



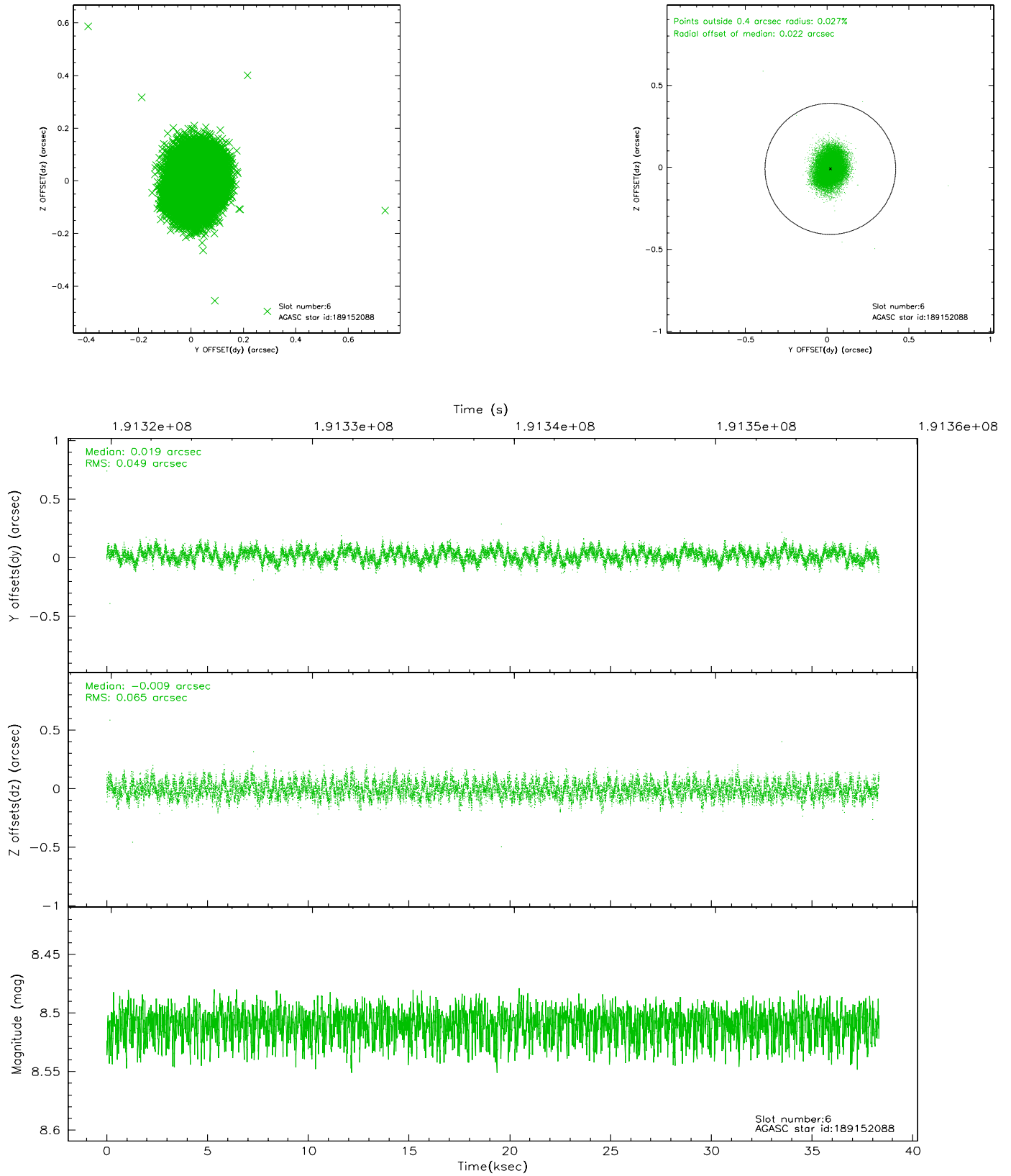
## 2.4.2 Slot 4



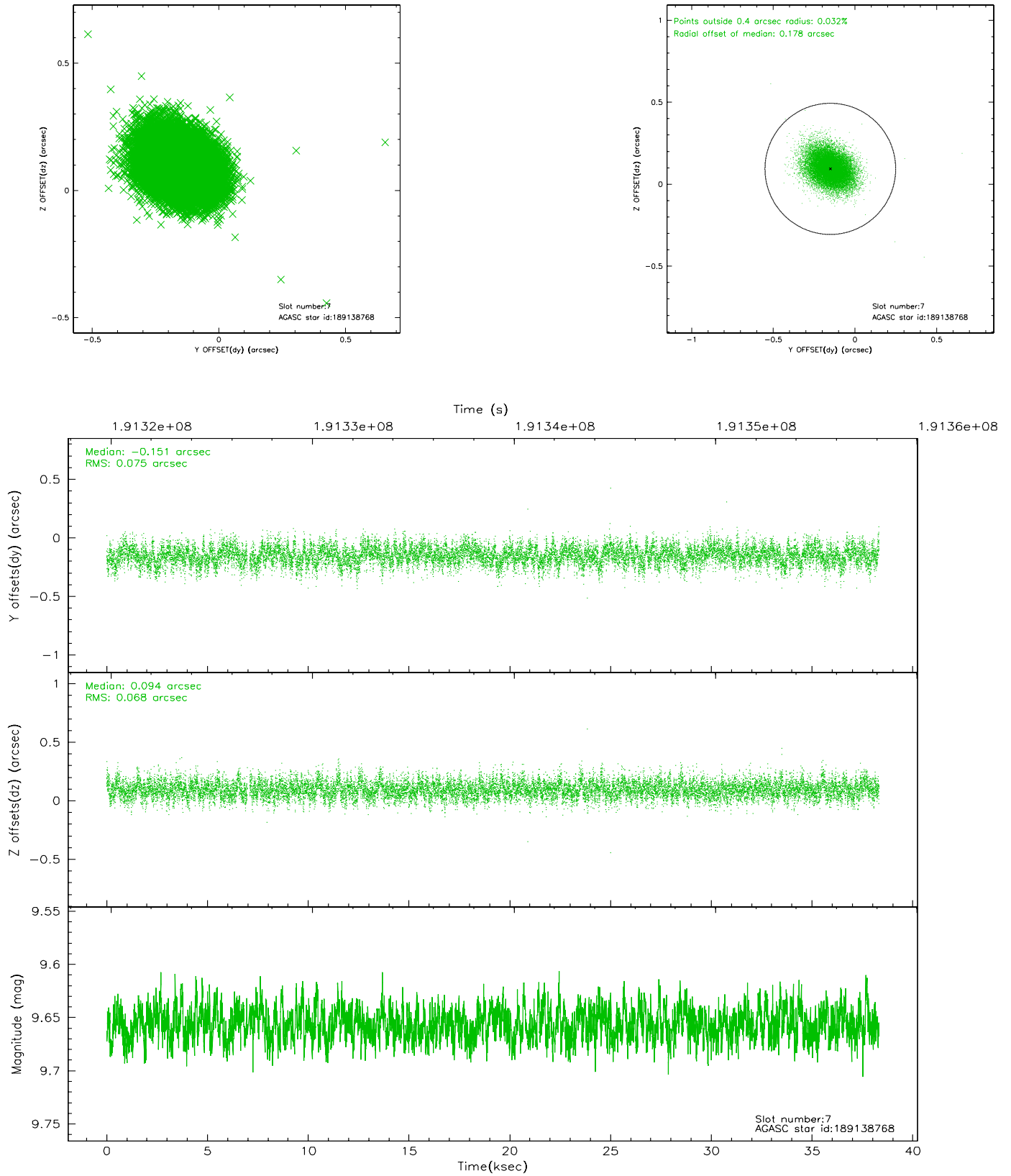
### 2.4.3 Slot 5



## 2.4.4 Slot 6

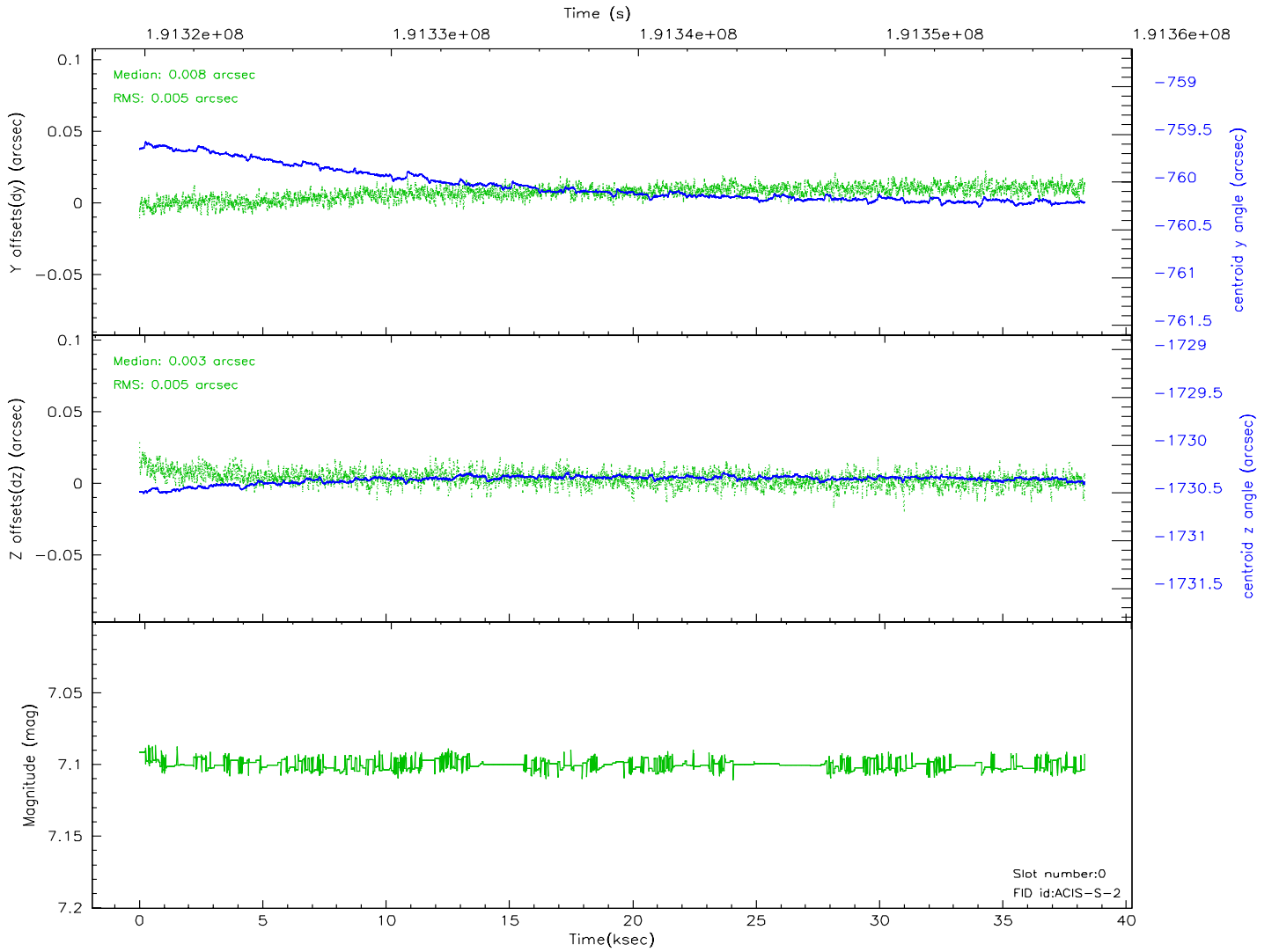
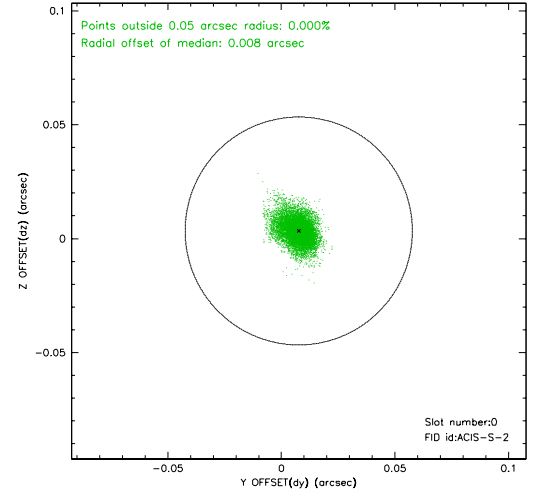
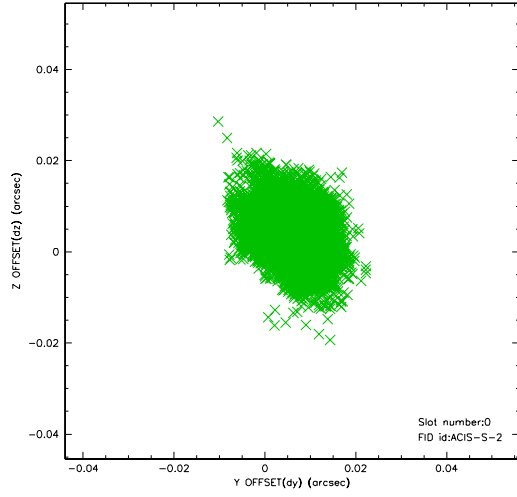


## 2.4.5 Slot 7

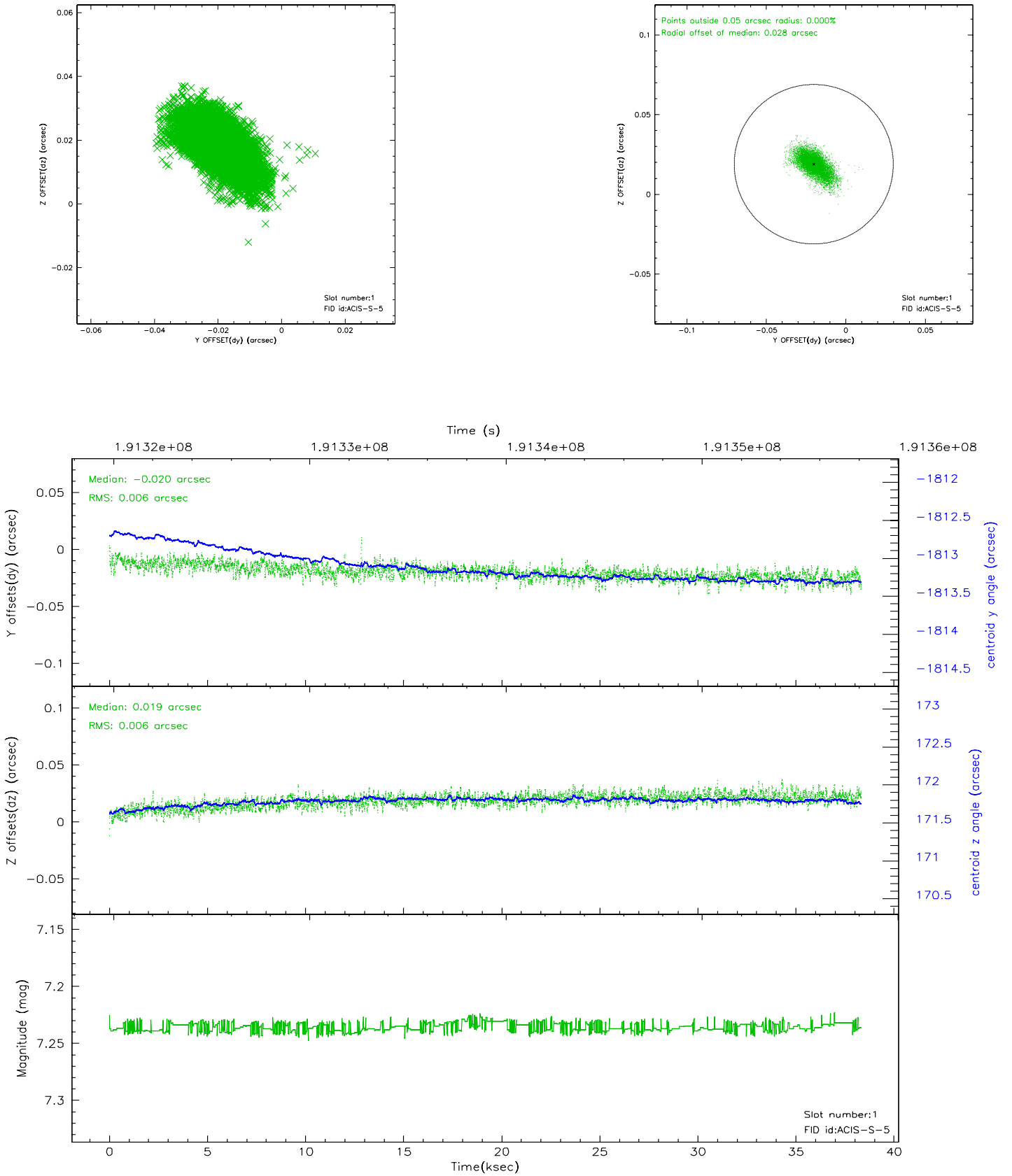


## 2.5 FID Slots

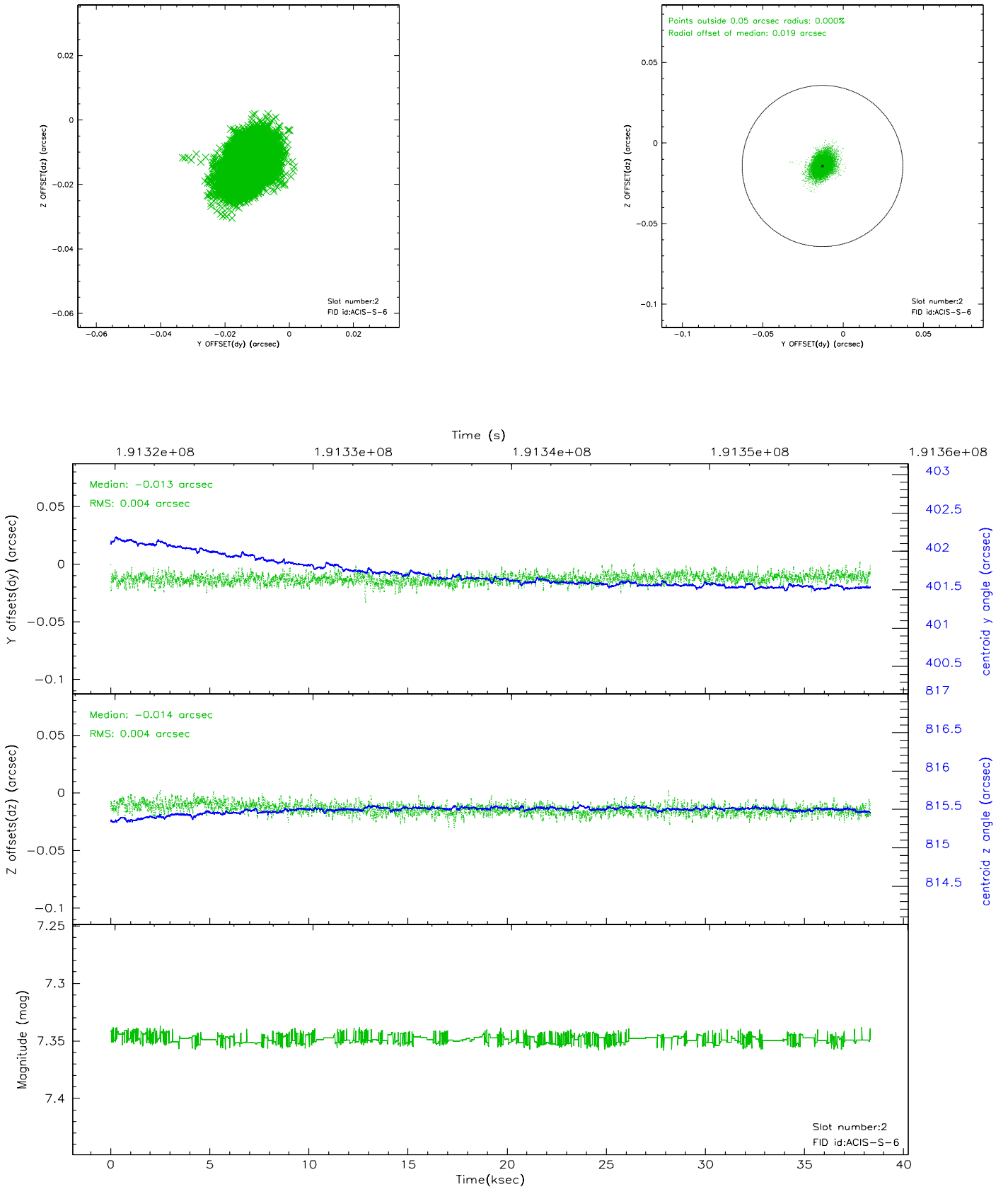
### 2.5.1 Slot 0



## 2.5.2 Slot 1



### 2.5.3 Slot 2



### 3 Point Sources

## A Summary

### A.1 Status

V&V Scientist	Beth Sundheim
V&V Date (YYYY-MM-DD)	2006.06.07
V&V Edition	1
V&V Disposition and Status	OK
V&V Charge Time	38.325

### A.2 Comments