

# V&V Reference Report

## L2 ASCDS Version : 7.6.7.1

Observation 4716 - L2 Version 002  
Chandra X-Ray Center

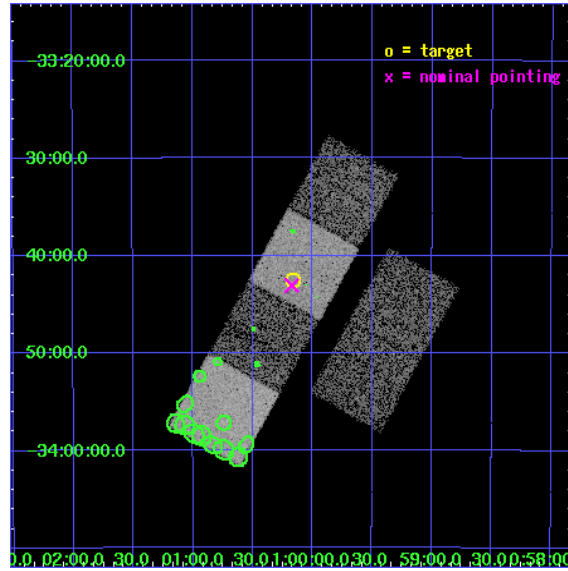
L2 Processing Date : Apr 7 2006

## Contents

<b>1</b>	<b>Front</b>	<b>2</b>
<b>2</b>	<b>OBI</b>	<b>3</b>
2.1	OBI . . . . .	3
2.1.1	Images . . . . .	3
2.1.2	Bias . . . . .	3
2.1.3	Parameters . . . . .	4
2.1.4	Events . . . . .	4
2.2	Compared Parameters . . . . .	5
2.3	Aspect . . . . .	6
2.4	Star Slots . . . . .	9
2.4.1	Slot 3 . . . . .	9
2.4.2	Slot 4 . . . . .	10
2.4.3	Slot 5 . . . . .	11
2.4.4	Slot 6 . . . . .	12
2.4.5	Slot 7 . . . . .	13
2.5	FID Slots . . . . .	14
2.5.1	Slot 0 . . . . .	14
2.5.2	Slot 1 . . . . .	15
2.5.3	Slot 2 . . . . .	16
<b>3</b>	<b>Point Sources</b>	<b>17</b>
<b>A</b>	<b>Summary</b>	<b>18</b>
A.1	Status . . . . .	18
A.2	Comments . . . . .	18

# 1 Front

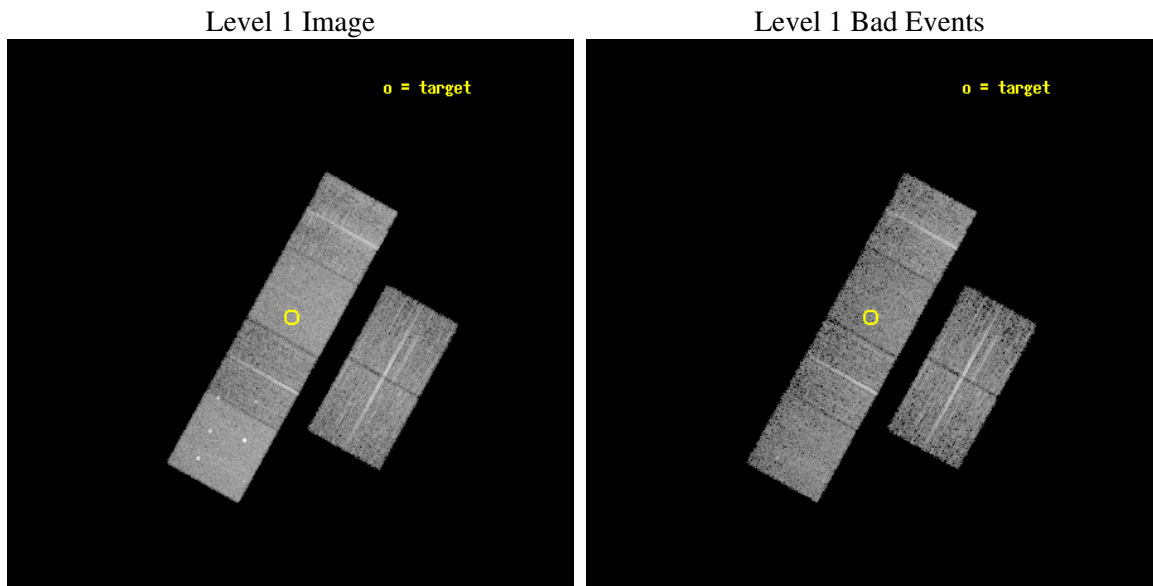
seq_num	600371
obs_id	4716
title	Using the Sculptor Dwarf Spheroidal Galaxy to Constrain X-ray Binary Production in Population II
observer	Dr. Thomas Maccarone
object	SCULPTOR DWARF SPHEROIDAL
dtcycle	0
cycle	P
ra_targ	15.039167
dec_targ	-33.708889
ra_nom	15.042902151026
dec_nom	-33.718044164884
roll_nom	299.09945891966
revision	2
ontime	6092.7999773026
livetime	6015.6492753462
ontime2	6089.5590070188
ontime3	6089.5589771271
ontime5	6092.7999773026
ontime6	6092.7999773026
ontime7	6092.7999773026
ontime8	6092.7919130325
l2events	73424



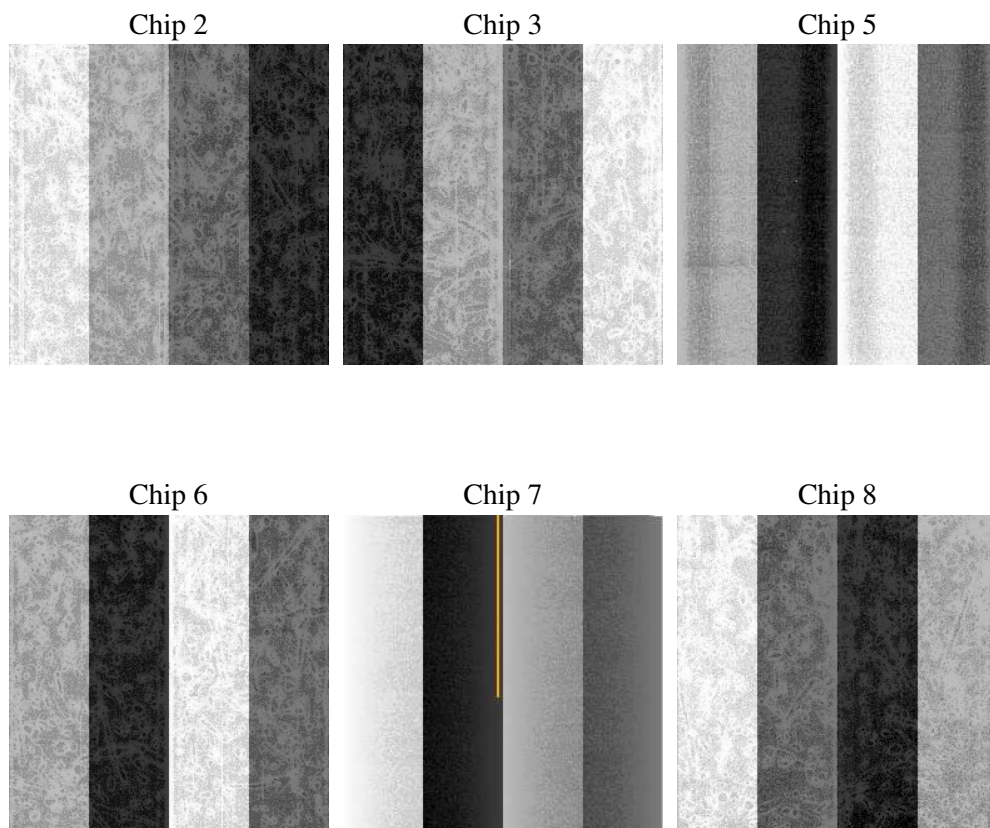
## 2 OBI

### 2.1 OBI

#### 2.1.1 Images



#### 2.1.2 Bias



### 2.1.3 Parameters

obi_num	1
ascdsver	7.6.7.1
caldsver	3.2.1
date	2006-04-07T07:28:53
revision	2

sched_exp_time	6000.000000
ontime	6096.3347148299
ontime2	6093.0937445462
ontime3	6093.0937146544
ontime5	6096.3347148299
ontime6	6096.3347148299
ontime7	6096.3347148299
ontime8	6096.3347148299
l1events	338112

### 2.1.4 Events

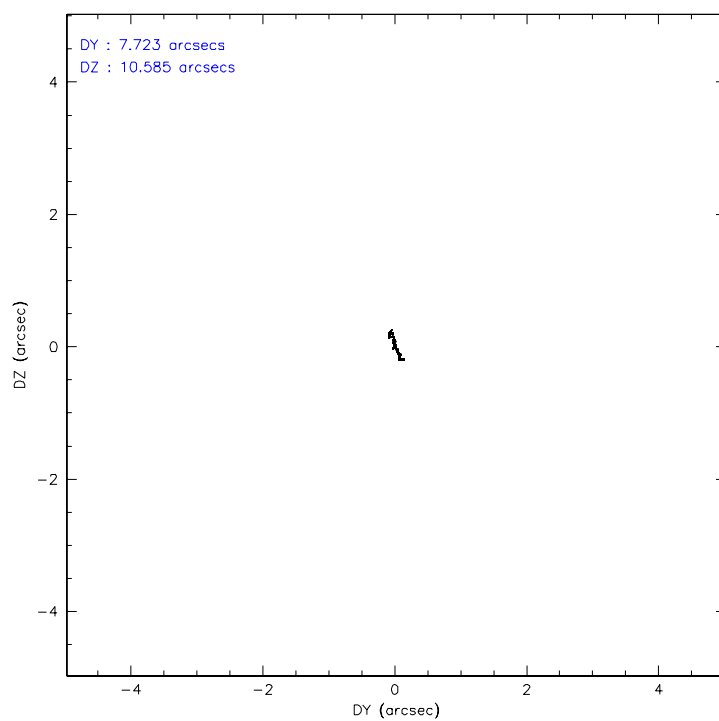
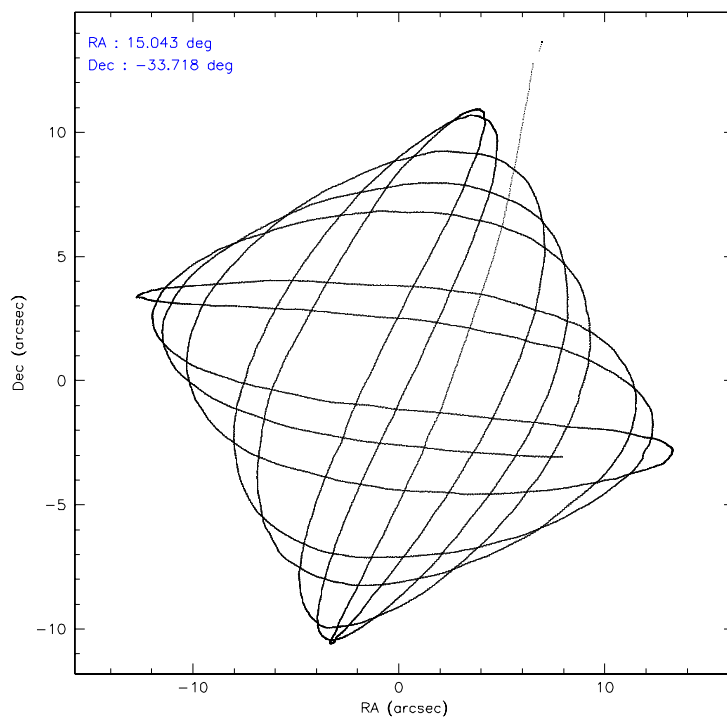
	ccd 2	ccd 3	ccd 5	ccd 6	ccd 7	ccd 8
level 1 events	48795	46356	71506	47440	63453	60562
rejected events	43090	40885	39017	41531	39395	47309
rejected %	88%	88%	54%	87%	62%	78%

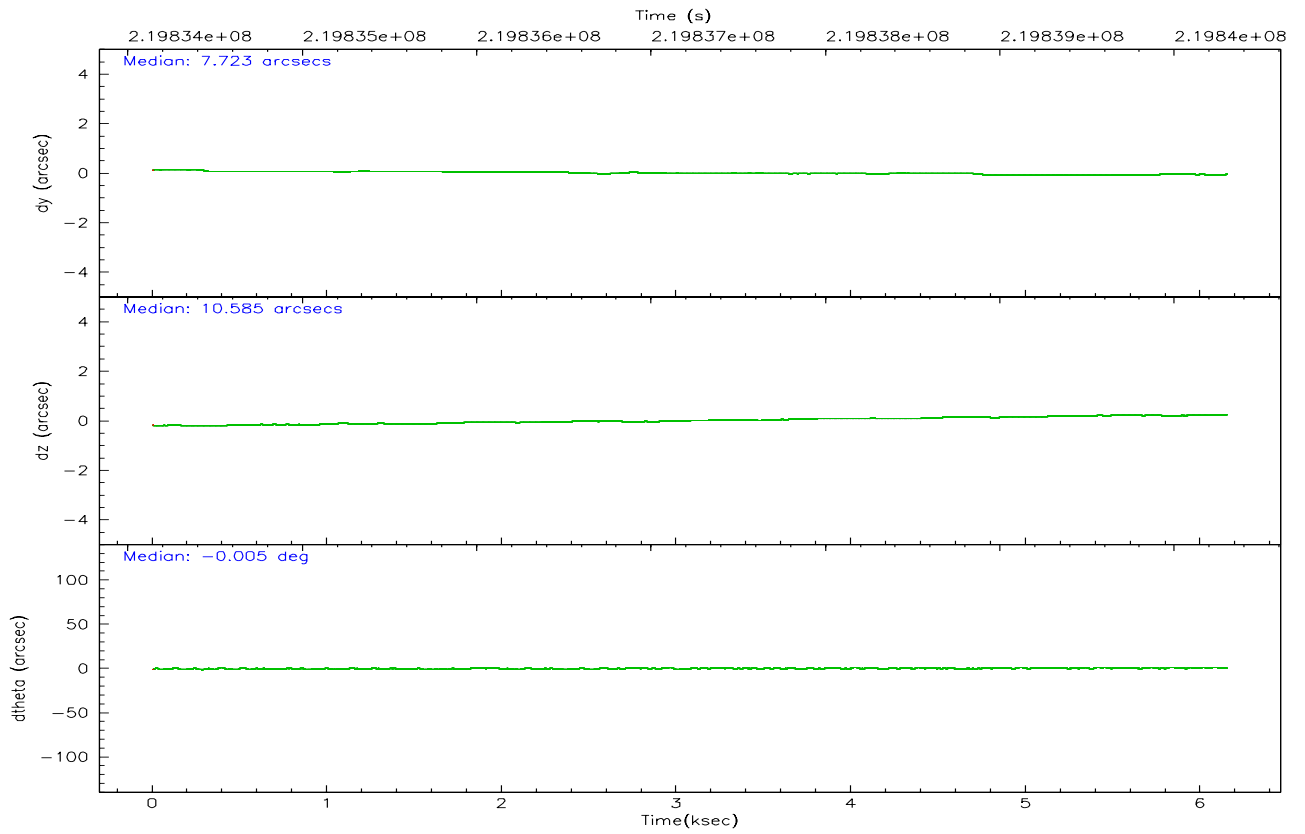
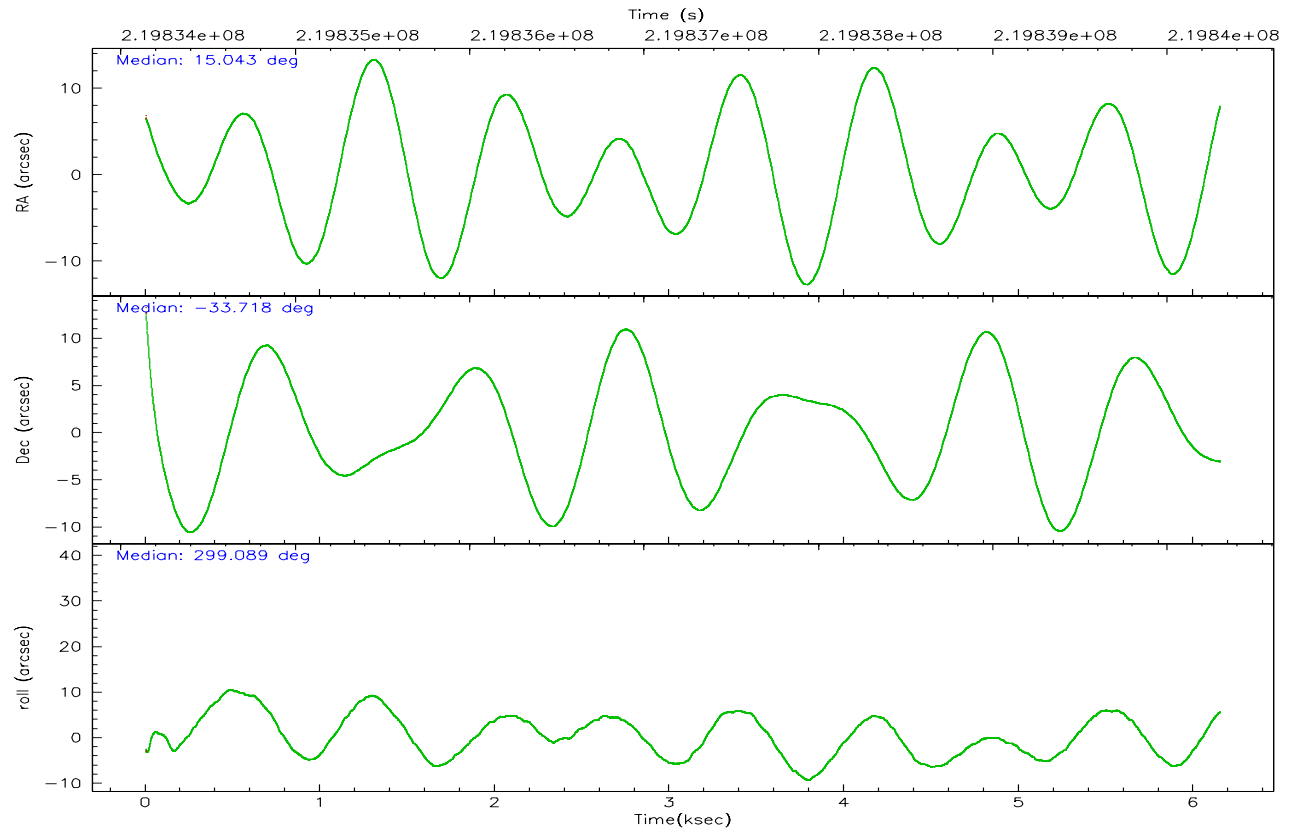
	ccd 2	ccd 3	ccd 5	ccd 6	ccd 7	ccd 8
grade 0 events	2554	2308	3497	2400	1322	3956
	5%	4%	4%	5%	2%	6%
grade 1 events	27	26	180	18	36	43
	0%	0%	0%	0%	0%	0%
grade 2 events	1197	1031	9701	1221	5981	3058
	2%	2%	13%	2%	9%	5%
grade 3 events	527	533	696	576	1211	1372
	1%	1%	0%	1%	1%	2%
grade 4 events	536	575	682	540	1169	1269
	1%	1%	0%	1%	1%	2%
grade 5 events	1880	2045	3434	2198	4127	2805
	3%	4%	4%	4%	6%	4%
grade 6 events	896	1027	17929	1175	14389	3602
	1%	2%	25%	2%	22%	5%
grade 7 events	41178	38811	35387	39312	35218	44457
	84%	83%	49%	82%	55%	73%

## 2.2 Compared Parameters

Parameter	Planned	Actual	Parameter	Planned	Actual
Instrument	ACIS	ACIS	Obspar format version number	6	6
Detector	ACIS-235678	ACIS-235678	Obspar file type	PREDICTED	ACTUAL
Grating	NONE	NONE	Obspar update status	NONE	UPDATED
Data mode	VFAINT	VFAINT	On-chip summing requested	N	N
Observation mode	POINTING	POINTING	Subarray requested	NONE	NONE
Pointing RA	15.014644	15.04290215102557	Alternating exposures requested	N	N
Pointing Dec	-33.704366	-33.71804416488369	Primary exposure time	0.000000	3.2
Pointing Roll	298.927165	299.0994589196591			
SIM focus pos (mm)	-0.684267	-0.6828225247311905			
SIM defocus (mm)	0	0.001444936568705701			
SIM translation stage pos (mm)	-190.132523	-190.1400660498719			
SIM translation stage offset (mm)	0	0.00754346686406393			
Observation start time	219834300.184000	219833271.91283			
Observation start date	2004-12-19T09:03:56	2004-12-19T08:47:51			
Observation end time	219840300.184000	219840899.45067			
Observation end date	2004-12-19T10:43:56	2004-12-19T10:54:59			
Read mode	TIMED	TIMED			

## 2.3 Aspect





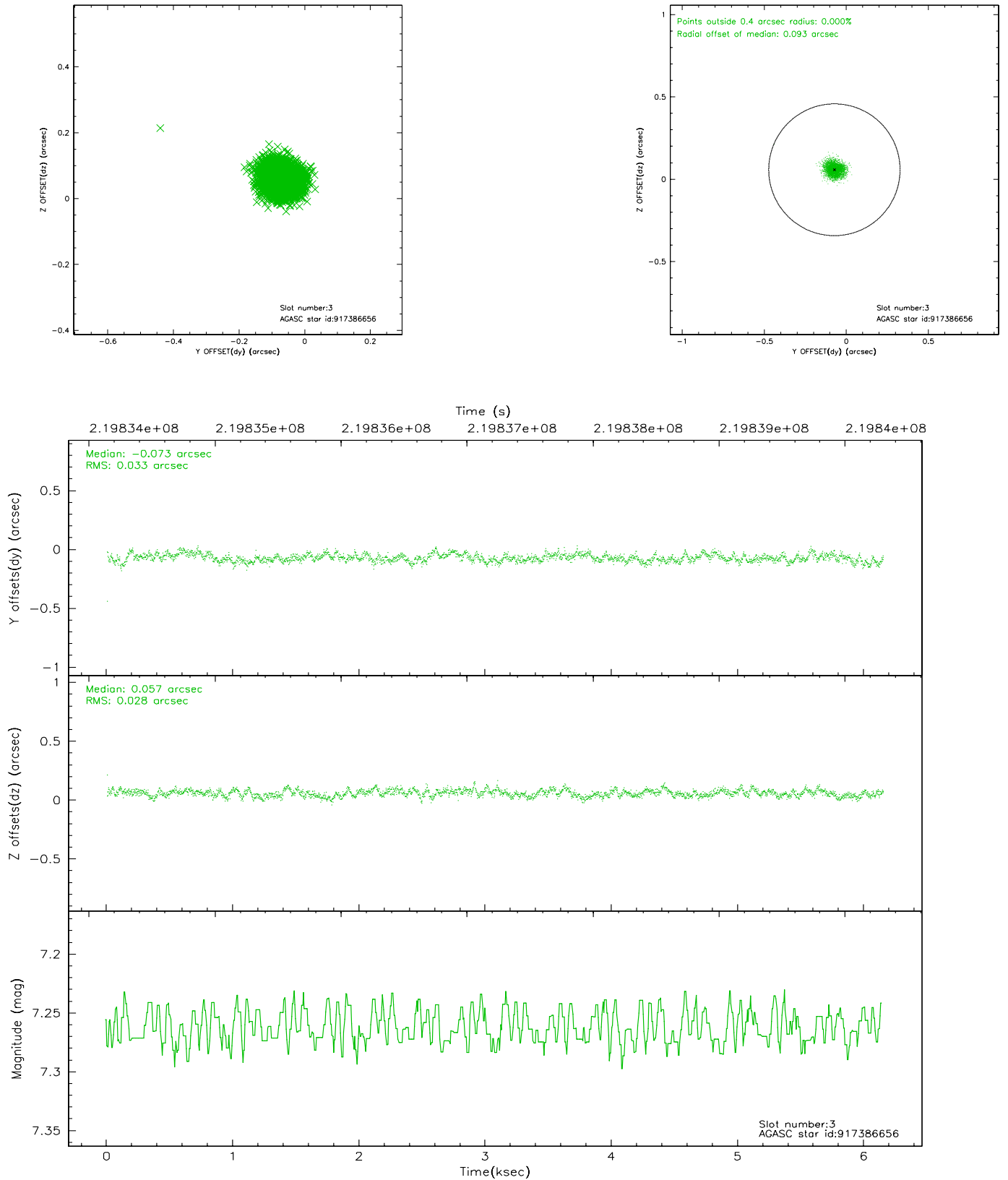
### Slot Statistics

slot	status	id	mag	n_pts	med_dy	med_dz	dr1	dr2	ra	dec	mean_y	mean_z
0	FID	ACIS-S-2	7.10	1501	-0.034	0.013	0.007	0.011	0.000000	0.000000	-760.49	-1731.87
1	FID	ACIS-S-4	7.21	1501	0.055	0.013	0.006	0.011	0.000000	0.000000	2152.39	175.69
2	FID	ACIS-S-5	7.23	1501	-0.053	-0.017	0.007	0.011	0.000000	0.000000	-1812.17	170.33
3	GUIDE	917386656	7.26	3001	-0.073	0.057	0.046	0.073	15.342124	-33.359890	-607.89	1461.45
4	GUIDE	917389288	9.58	2999	0.005	0.076	0.091	0.149	15.394706	-33.185862	-1078.28	1904.89
5	GUIDE	917390768	9.87	3000	-0.090	0.078	0.114	0.186	14.870561	-33.104152	-2101.44	665.59
6	GUIDE	917650528	8.72	2998	-0.100	-0.073	0.084	0.132	14.274554	-33.869842	-541.89	-2227.61
7	GUIDE	917651048	9.65	2998	0.253	-0.141	0.102	0.160	14.655628	-34.424089	1754.43	-2187.41

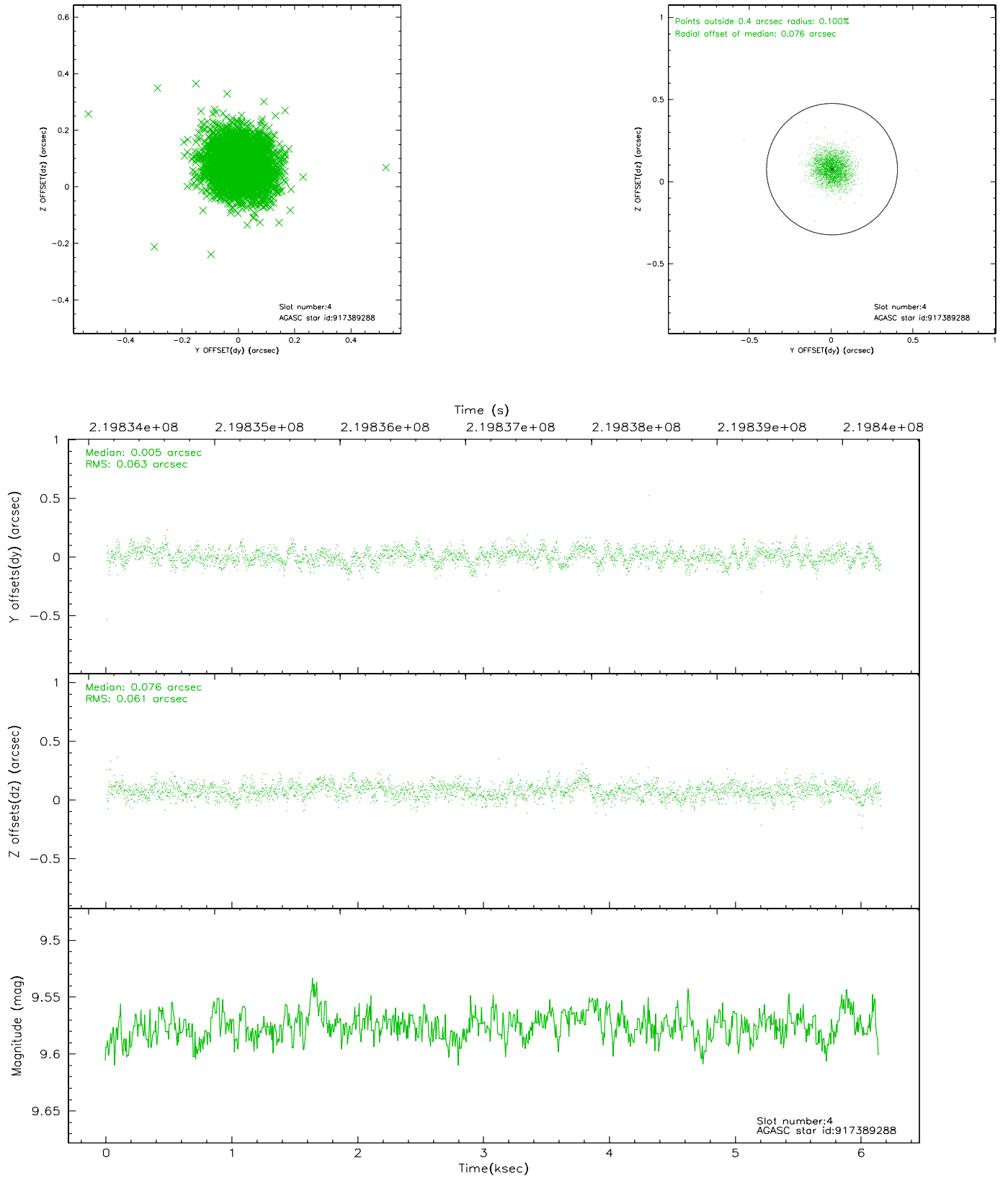


## 2.4 Star Slots

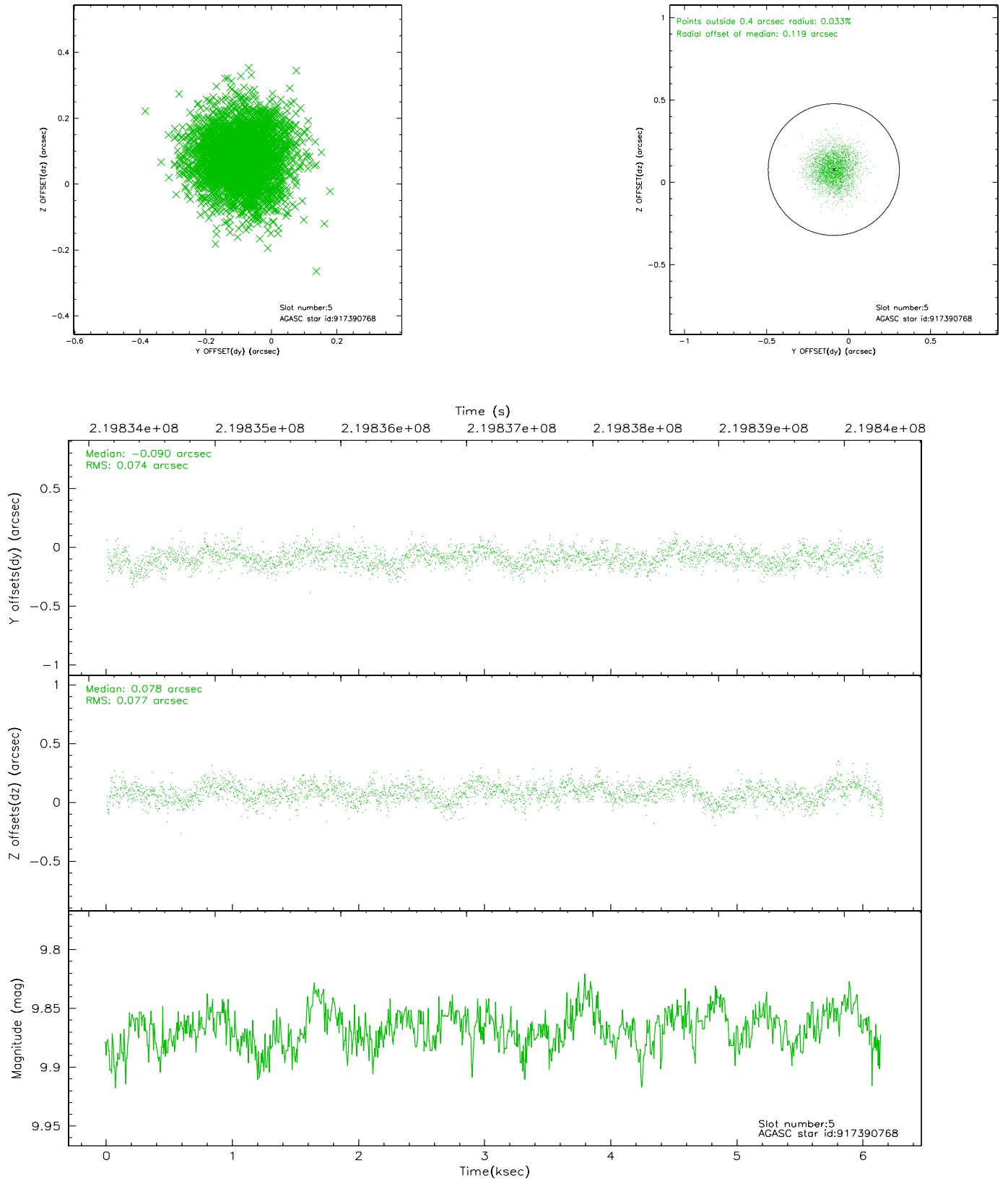
### 2.4.1 Slot 3



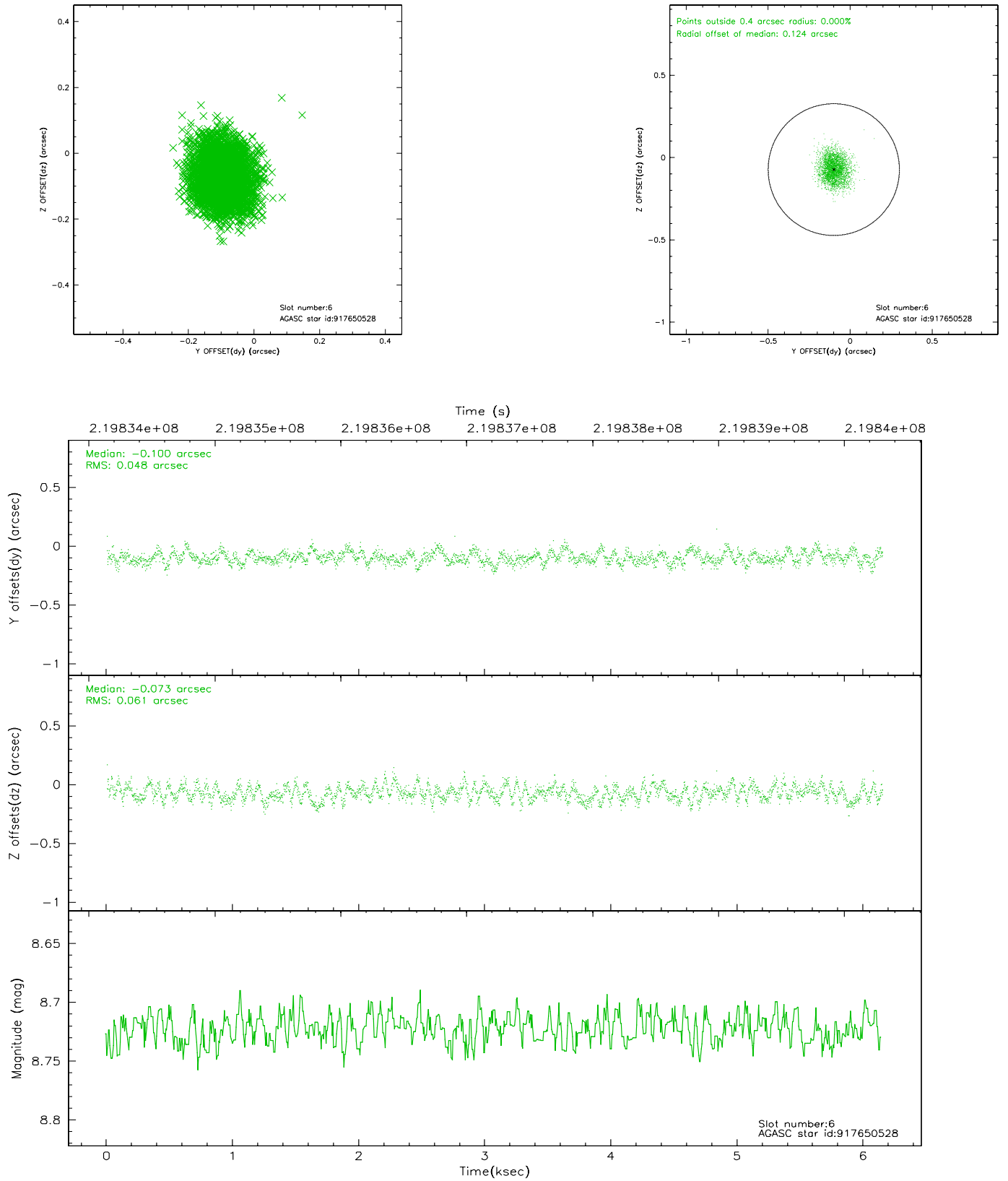
## 2.4.2 Slot 4



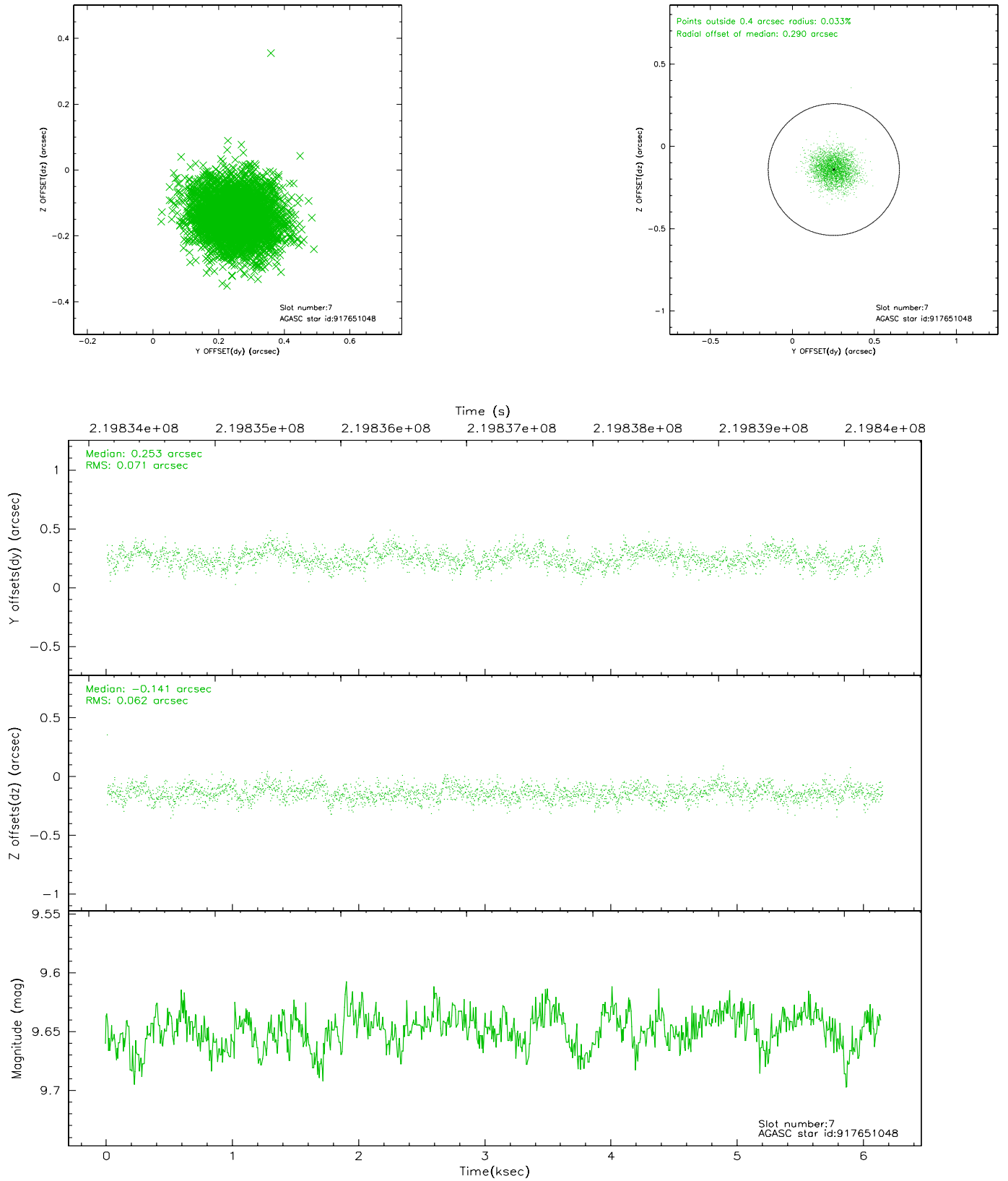
### 2.4.3 Slot 5



## 2.4.4 Slot 6

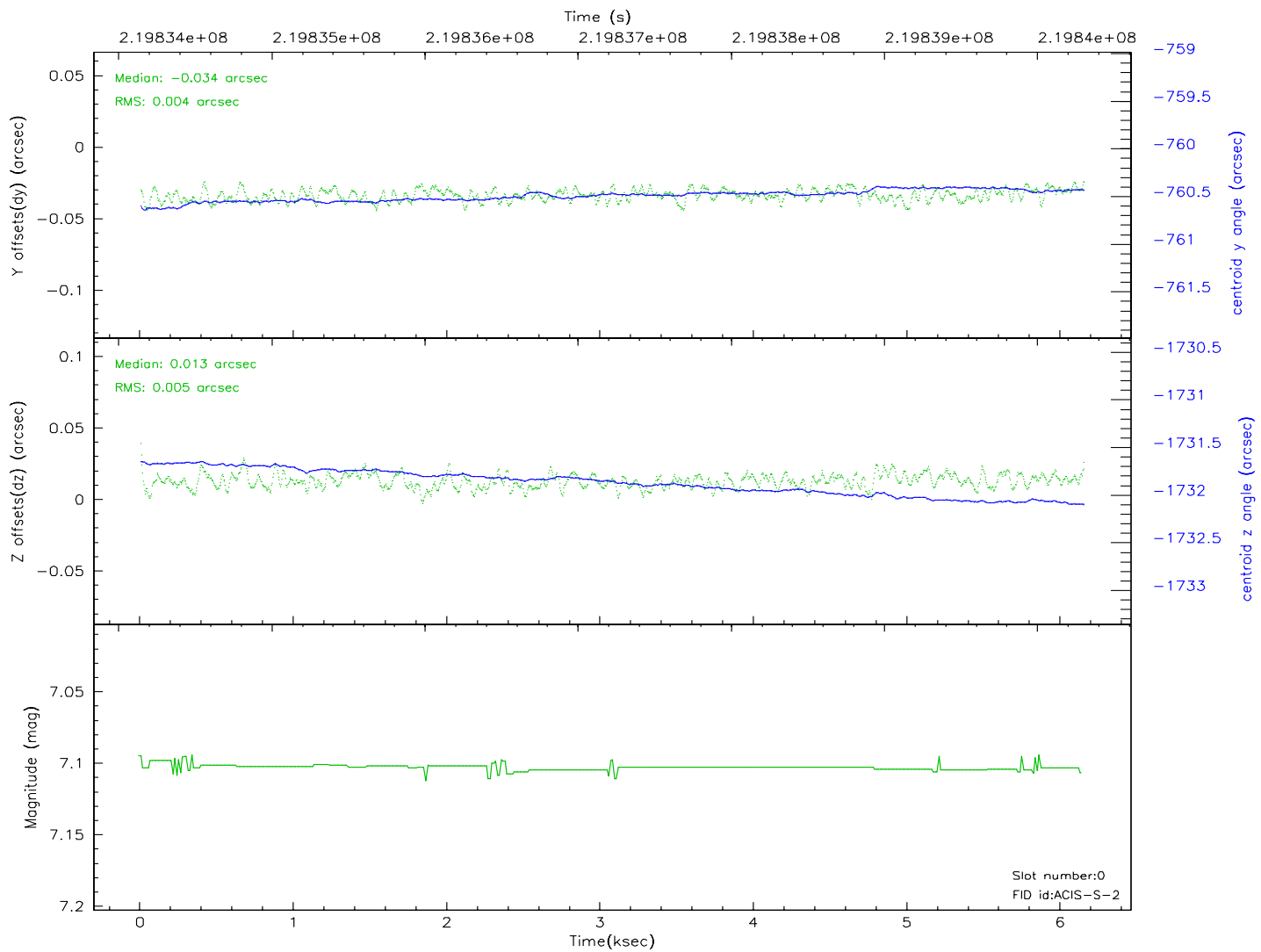
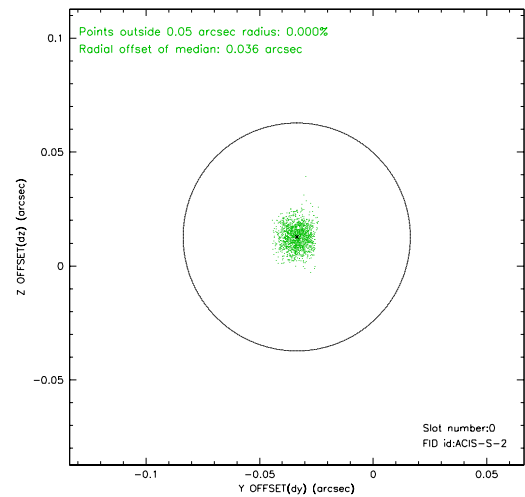
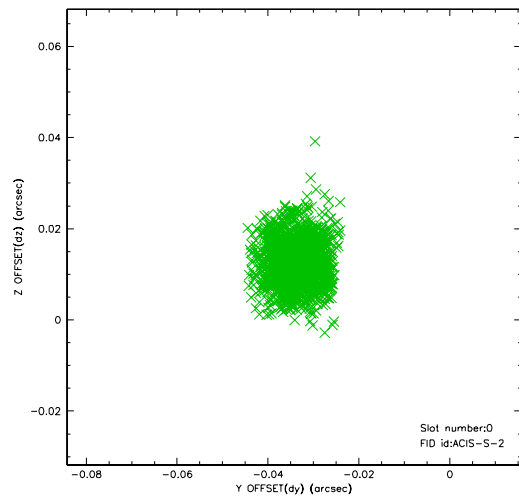


## 2.4.5 Slot 7

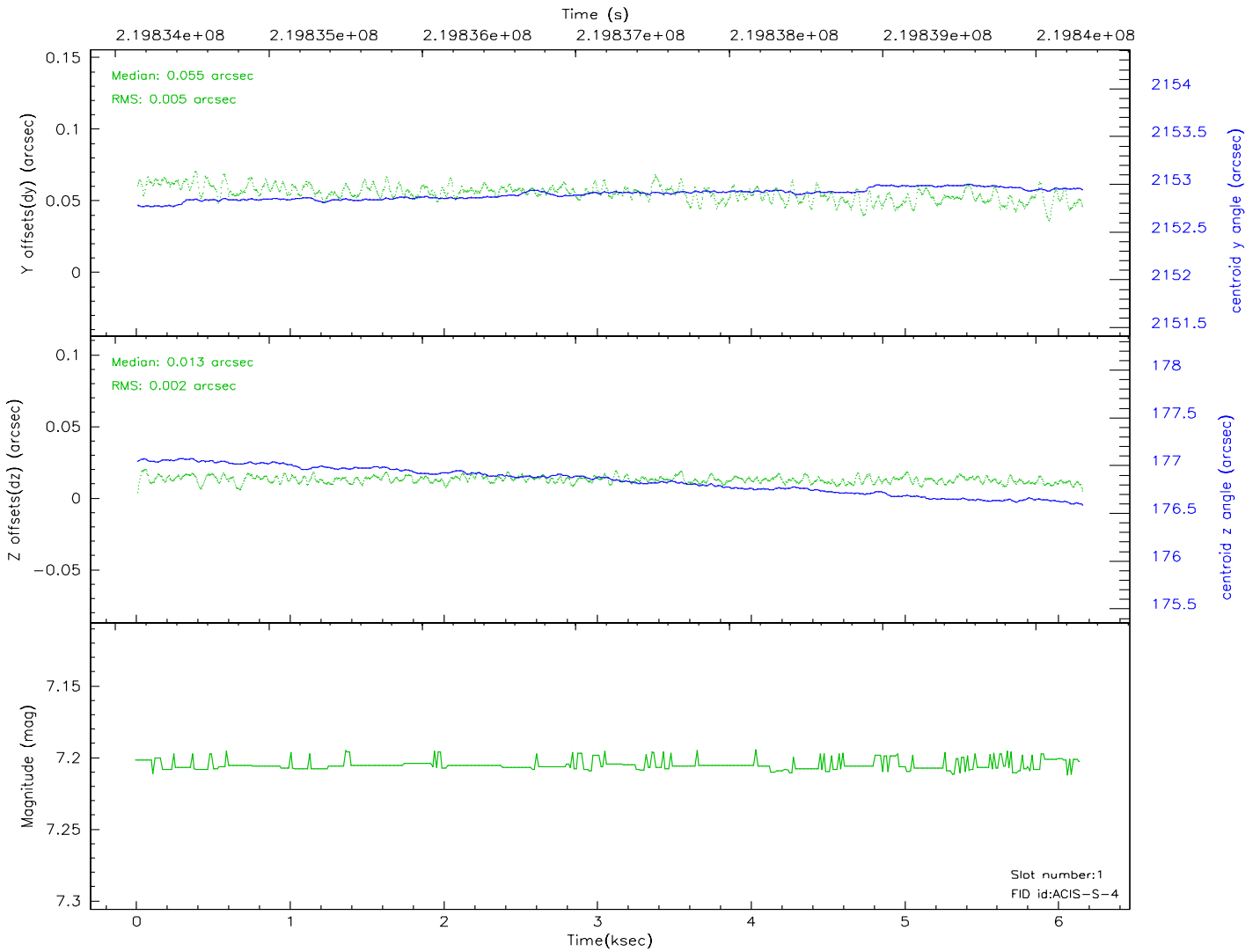
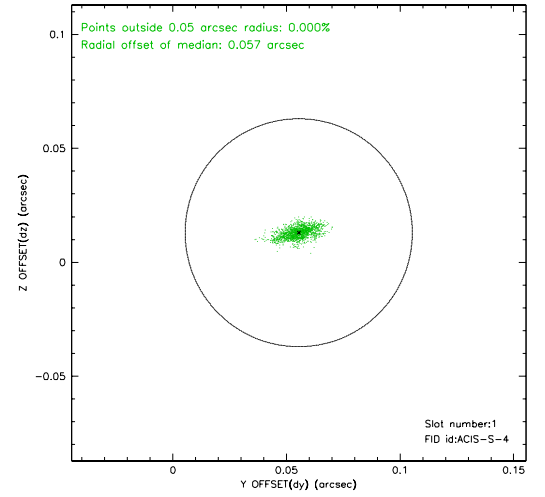
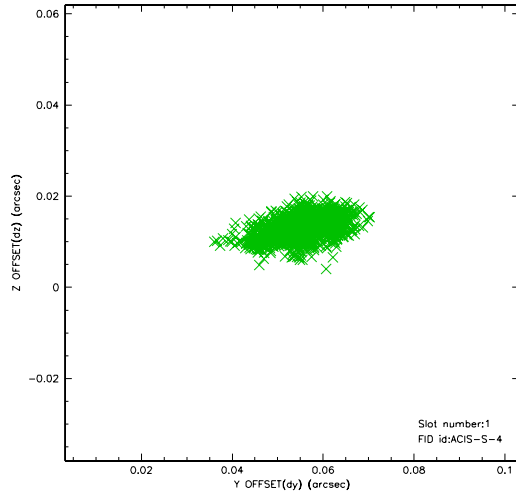


## 2.5 FID Slots

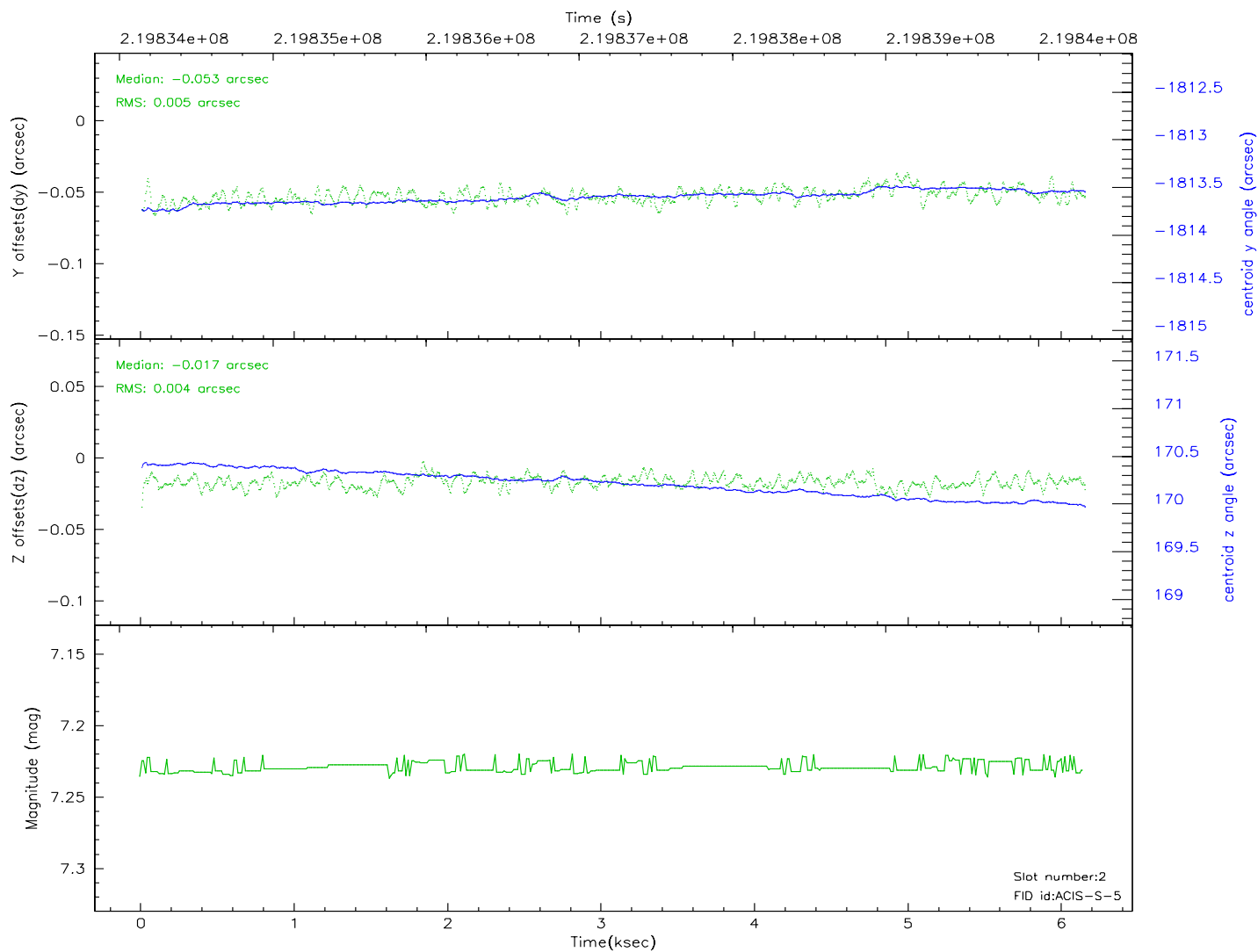
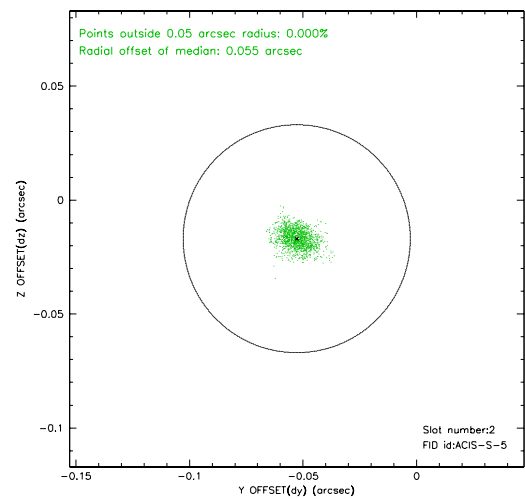
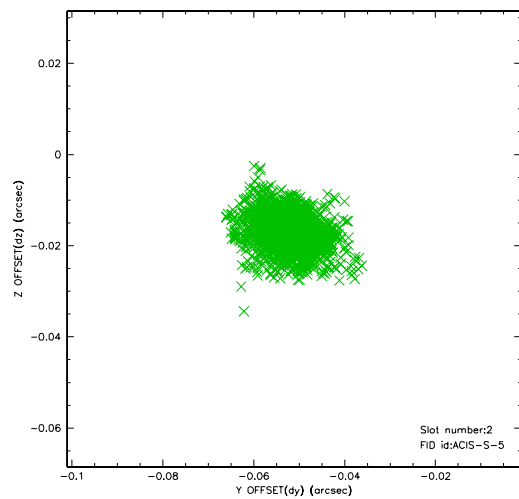
### 2.5.1 Slot 0



## 2.5.2 Slot 1

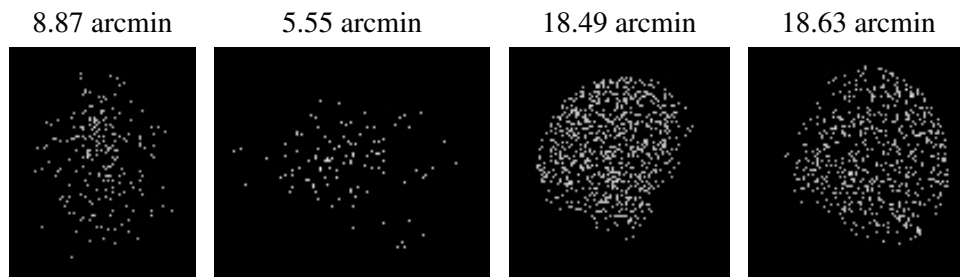


### 2.5.3 Slot 2





### 3 Point Sources



## A Summary

### A.1 Status

V&V Scientist	Beth Sundheim
V&V Date (YYYY-MM-DD)	2006.04.07
V&V Edition	1
V&V Disposition and Status	OK
V&V Charge Time	6.092799

### A.2 Comments