

V&V Reference Report

L2 ASCDS Version : 7.6.8

Observation 4246 - L2 Version 001
Chandra X-Ray Center

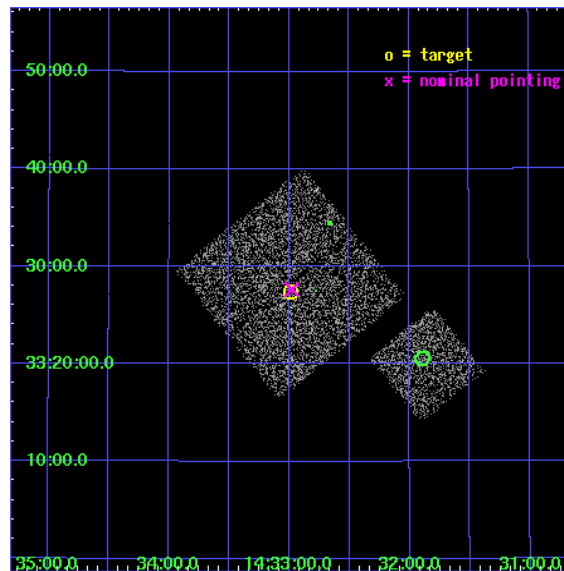
L2 Processing Date : Jul 29 2006

Contents

1	Front	2
2	OBI	3
2.1	OBI	3
2.1.1	Images	3
2.1.2	Bias	3
2.1.3	Parameters	4
2.1.4	Events	4
2.2	Compared Parameters	5
2.3	Aspect	6
2.4	Star Slots	9
2.4.1	Slot 3	9
2.4.2	Slot 4	10
2.4.3	Slot 5	11
2.4.4	Slot 6	12
2.4.5	Slot 7	13
2.5	FID Slots	14
2.5.1	Slot 0	14
2.5.2	Slot 1	15
2.5.3	Slot 2	16
3	Point Sources	17
A	Summary	18
A.1	Status	18
A.2	Comments	18

1 Front

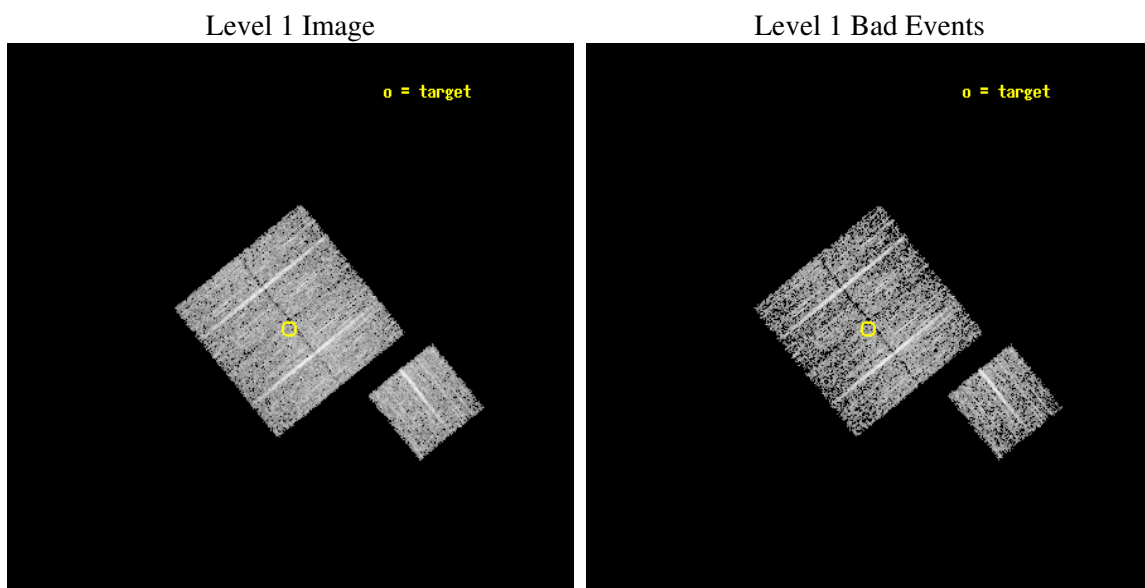
seq_num	900289
obs_id	4246
title	A CHANDRA WIDE-FIELD SURVEY TO MAP THE COSMIC WEB AND INVESTIGATE THE EVOLUTION OF NUCLEAR ACCRETION
observer	Dr. Christine Jones
object	SD39
dtcycle	0
cycle	P
ra_targ	218.246914
dec_targ	33.456918
ra_nom	218.24420619398
dec_nom	33.460996336764
roll_nom	141.00982841369
revision	3
ontime	4777.0999908149
livetime	4714.6836625851
ontime0	4777.0999908149
ontime1	4777.0999908149
ontime2	4777.0999908149
ontime3	4777.0999908149
ontime6	4777.0999908149
l2events	9522



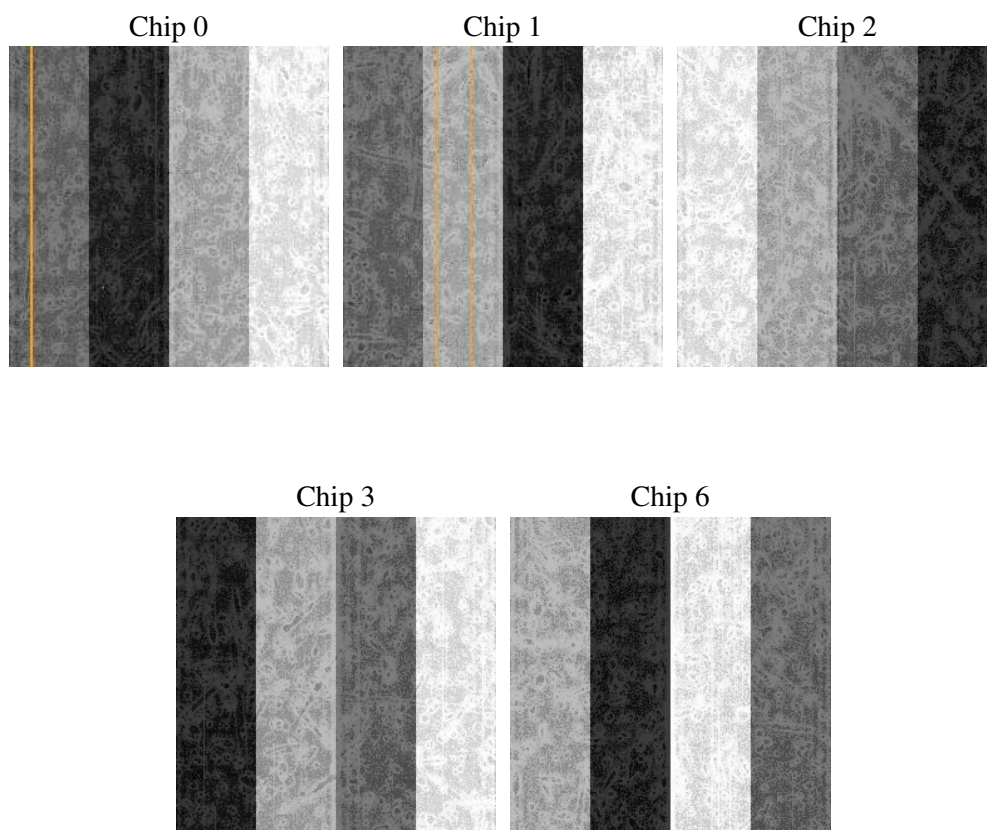
2 OBI

2.1 OBI

2.1.1 Images



2.1.2 Bias



2.1.3 Parameters

obi_num	1
ascdsver	7.6.8
caldbver	3.2.2
date	2006-07-29T22:59:52
revision	3

sched_exp_time	5000.000000
ontime	4780.6170215309
ontime0	4780.6170015931
ontime1	4780.6170215309
ontime2	4780.6170215309
ontime3	4780.6170215309
ontime6	4780.6170015931
llevents	115997

2.1.4 Events

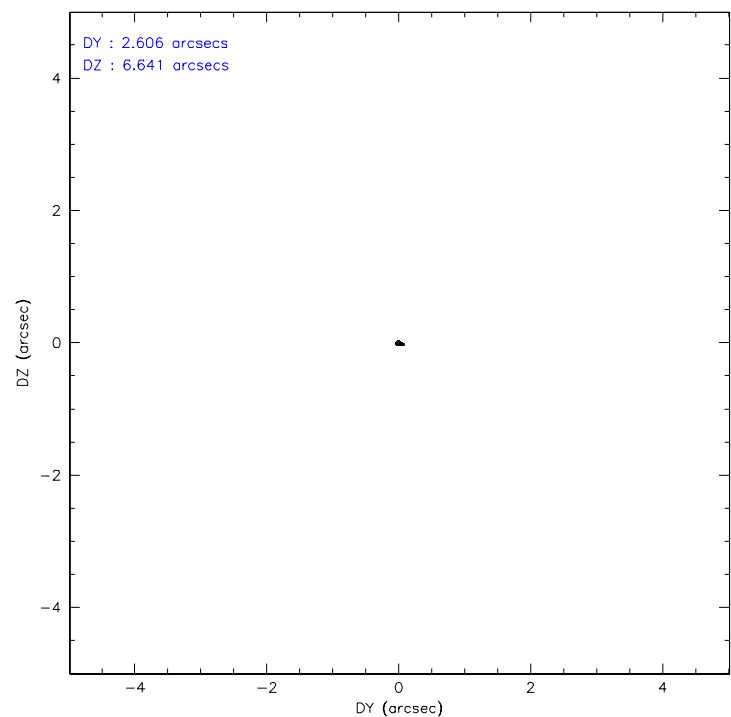
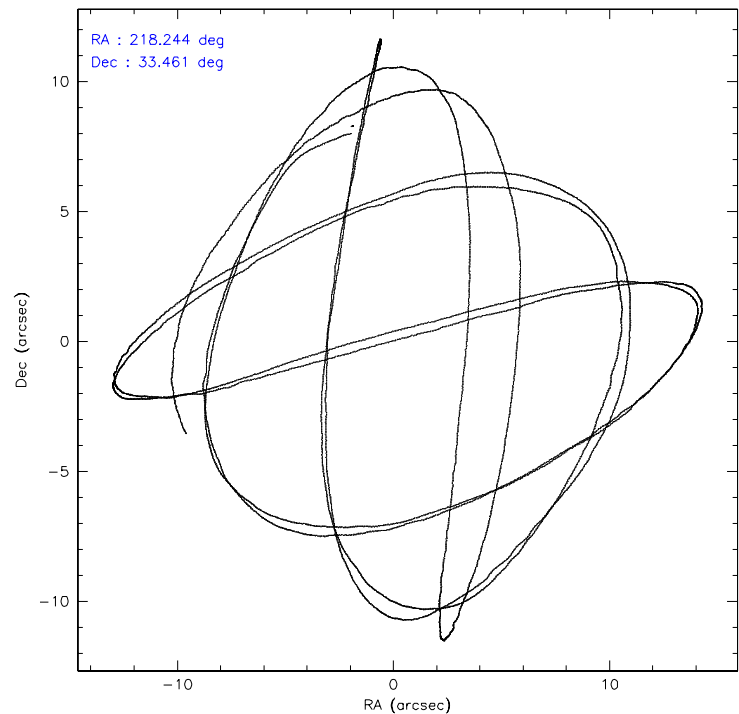
	ccd 0	ccd 1	ccd 2	ccd 3	ccd 6
level 1 events	22306	22316	25375	22664	23336
rejected events	19924	19878	23144	20424	20996
rejected %	89%	89%	91%	90%	89%

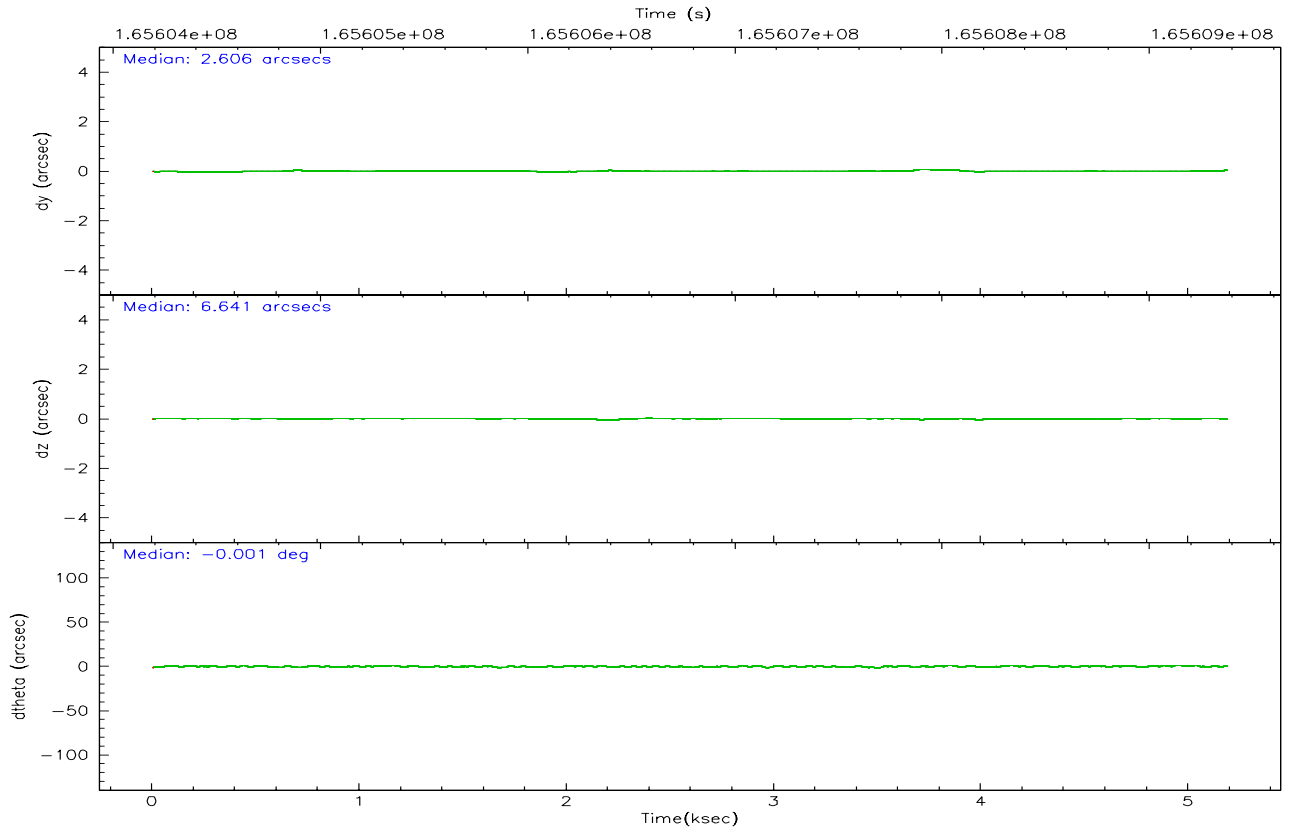
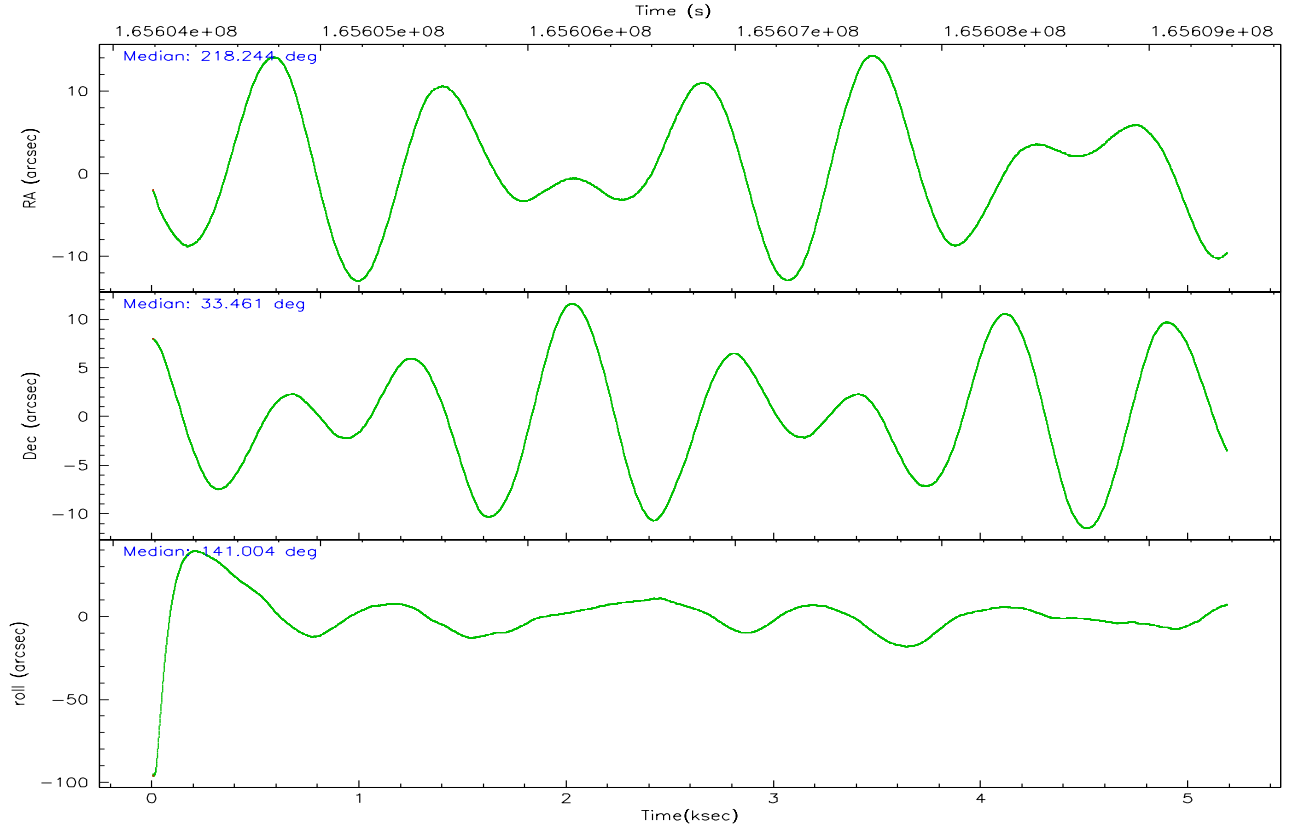
	ccd 0	ccd 1	ccd 2	ccd 3	ccd 6
grade 0 events	925	849	837	865	850
	4%	3%	3%	3%	3%
grade 1 events	9	16	12	12	13
	0%	0%	0%	0%	0%
grade 2 events	500	502	514	451	521
	2%	2%	2%	1%	2%
grade 3 events	288	282	251	266	250
	1%	1%	0%	1%	1%
grade 4 events	250	305	212	263	276
	1%	1%	0%	1%	1%
grade 5 events	639	742	642	770	764
	2%	3%	2%	3%	3%
grade 6 events	423	500	417	396	445
	1%	2%	1%	1%	1%
grade 7 events	19272	19120	22490	19641	20217
	86%	85%	88%	86%	86%

2.2 Compared Parameters

Parameter	Planned	Actual	Parameter	Planned	Actual
Instrument	ACIS	ACIS	Obspar format version number	6	6
Detector	ACIS-01236	ACIS-01236	Obspar file type	PREDICTED	ACTUAL
Grating	NONE	NONE	Obspar update status	NONE	UPDATED
Data mode	VFAINT	VFAINT	On-chip summing requested	N	N
Observation mode	POINTING	POINTING	Subarray requested	NONE	NONE
Pointing RA	218.276745	218.2442061939841	Alternating exposures requested	N	N
Pointing Dec	33.456834	33.46099633676442	Primary exposure time	0.000000	3.1
Pointing Roll	140.783559	141.0098284136861			
SIM focus pos (mm)	-0.782348	-0.7809083437167272			
SIM defocus (mm)	0	0.001439871863259334			
SIM translation stage pos (mm)	-233.592463	-233.5874344608287			
SIM translation stage offset (mm)	0	-0.005018542100998502			
Observation start time	165604383.184000	165604006.59644			
Observation start date	2003-04-01T17:11:59	2003-04-01T17:06:46			
Observation end time	165609383.184000	165609516.48417			
Observation end date	2003-04-01T18:35:19	2003-04-01T18:38:36			
Read mode	TIMED	TIMED			

2.3 Aspect



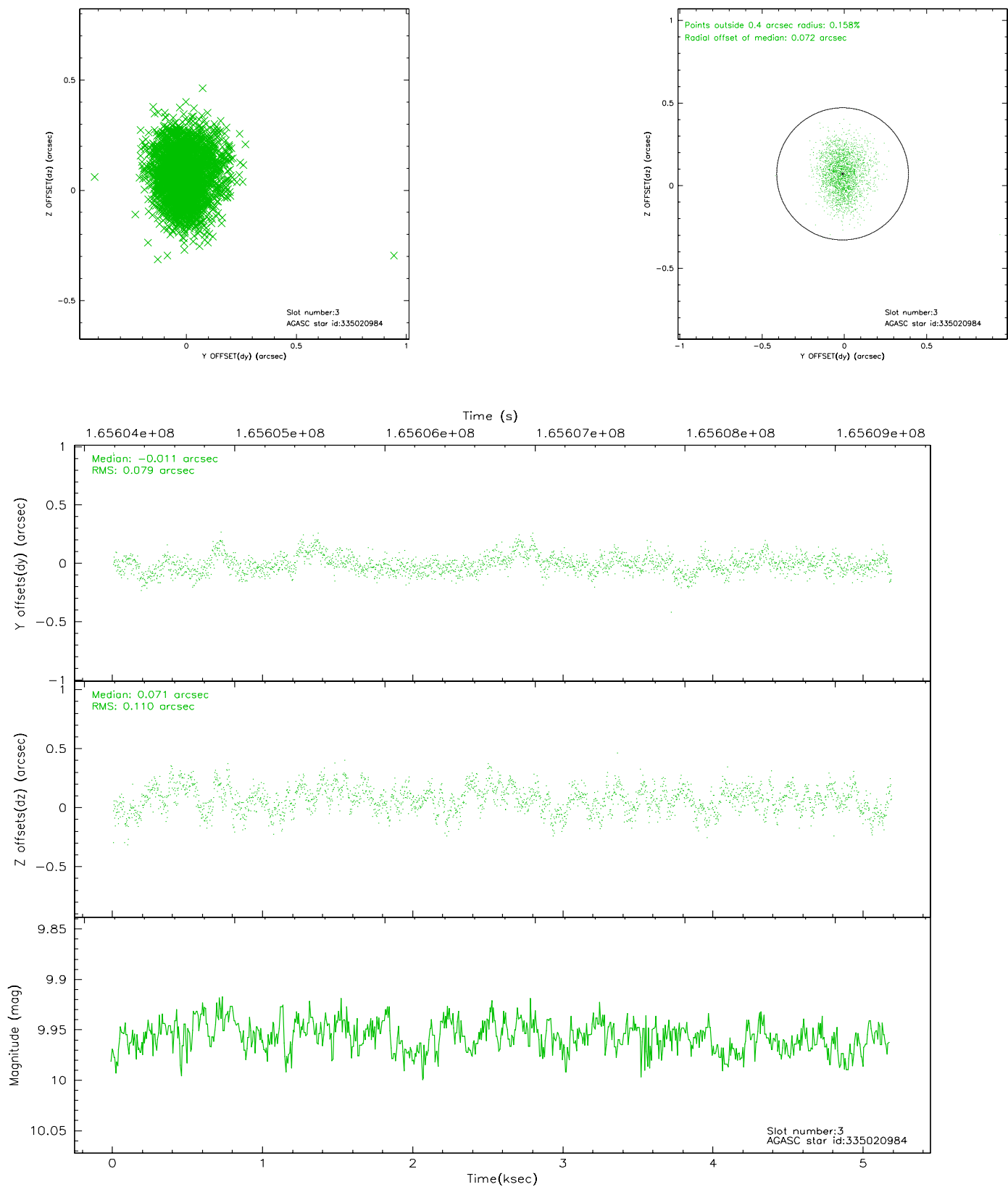


Slot Statistics

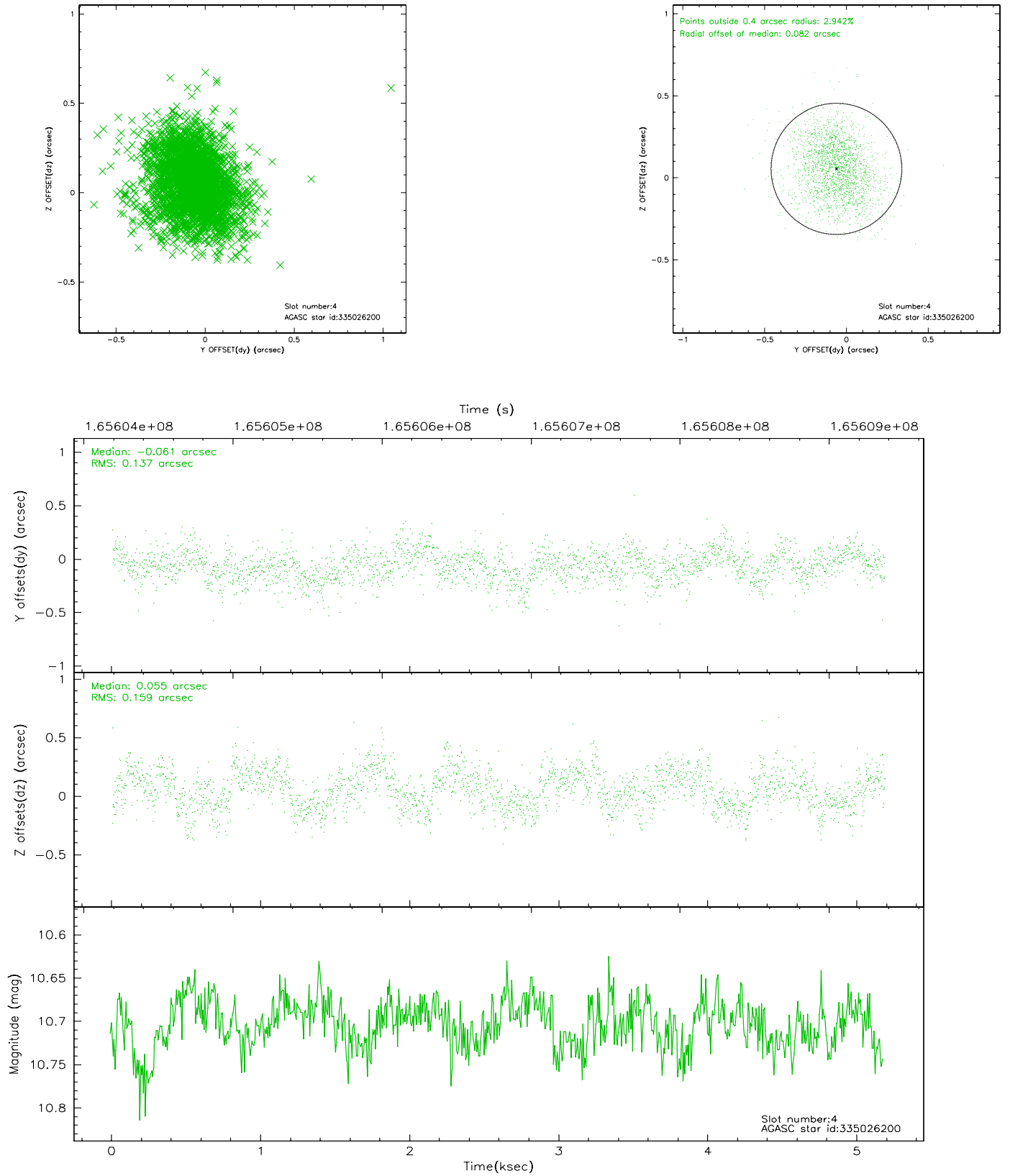
slot	status	id	mag	n_pts	med_dy	med_dz	dr1	dr2	ra	dec	mean_y	mean_z
0	FID	ACIS-I-1	7.25	1265	-0.004	0.018	0.006	0.011	0.000000	0.000000	937.18	-830.02
1	FID	ACIS-I-5	7.24	1265	-0.054	0.047	0.006	0.011	0.000000	0.000000	-1810.29	1066.97
2	FID	ACIS-I-6	7.26	1265	-0.034	0.005	0.007	0.012	0.000000	0.000000	401.47	1712.71
3	GUIDE	335020984	9.96	2530	-0.011	0.071	0.144	0.231	218.841668	33.815112	-490.12	-2071.42
4	GUIDE	335026200	10.70	2515	-0.061	0.055	0.220	0.365	218.096425	34.160577	2018.13	-1624.30
5	GUIDE	335027640	9.10	2528	0.104	0.029	0.113	0.176	218.092211	33.193770	-167.01	1084.06
6	GUIDE	335028616	9.97	2514	0.029	-0.059	0.124	0.208	218.529874	33.175085	-1232.04	303.15
7	GUIDE	335029384	8.49	2528	-0.065	-0.099	0.085	0.136	217.848061	33.088477	164.10	1842.79

2.4 Star Slots

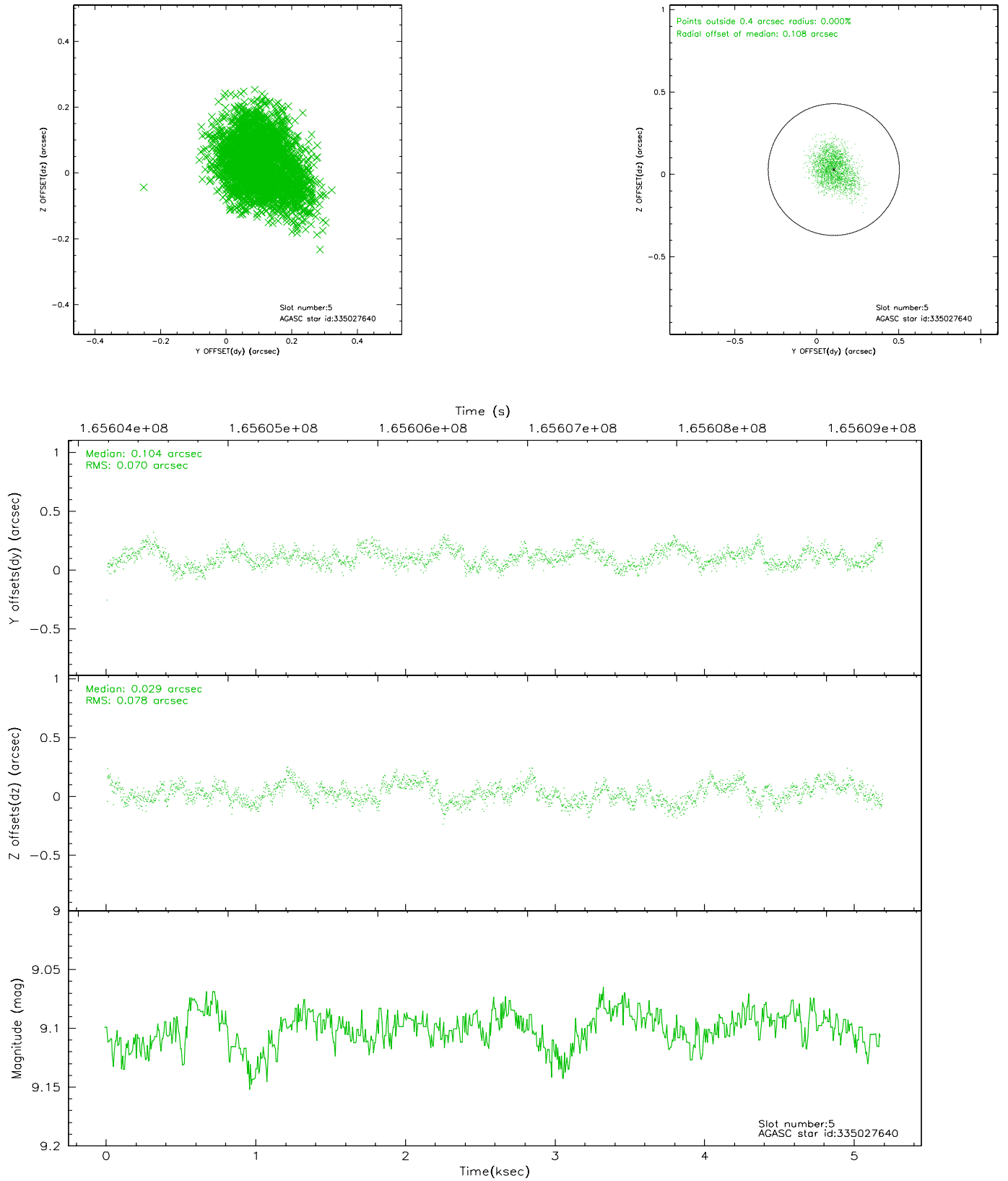
2.4.1 Slot 3



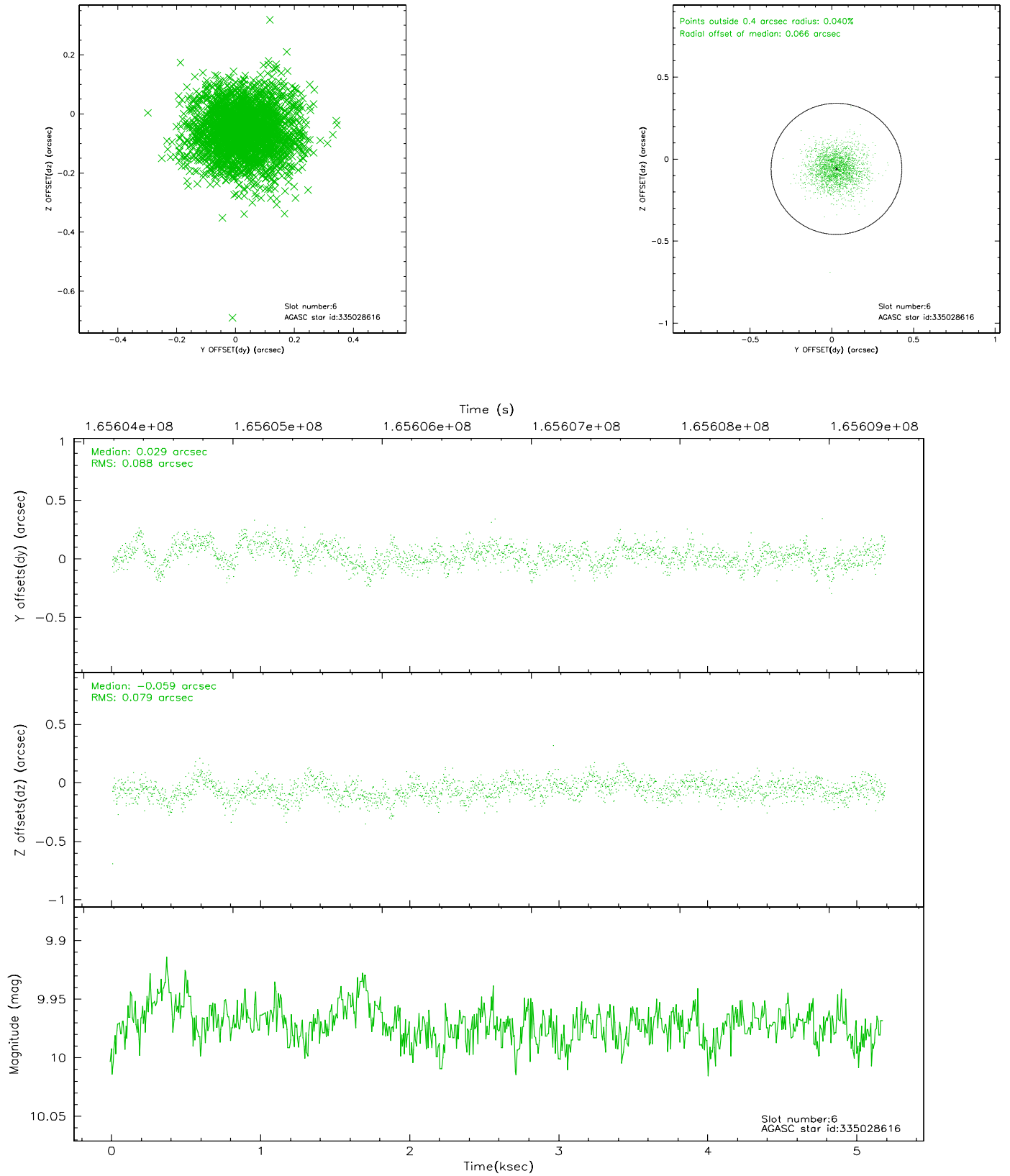
2.4.2 Slot 4



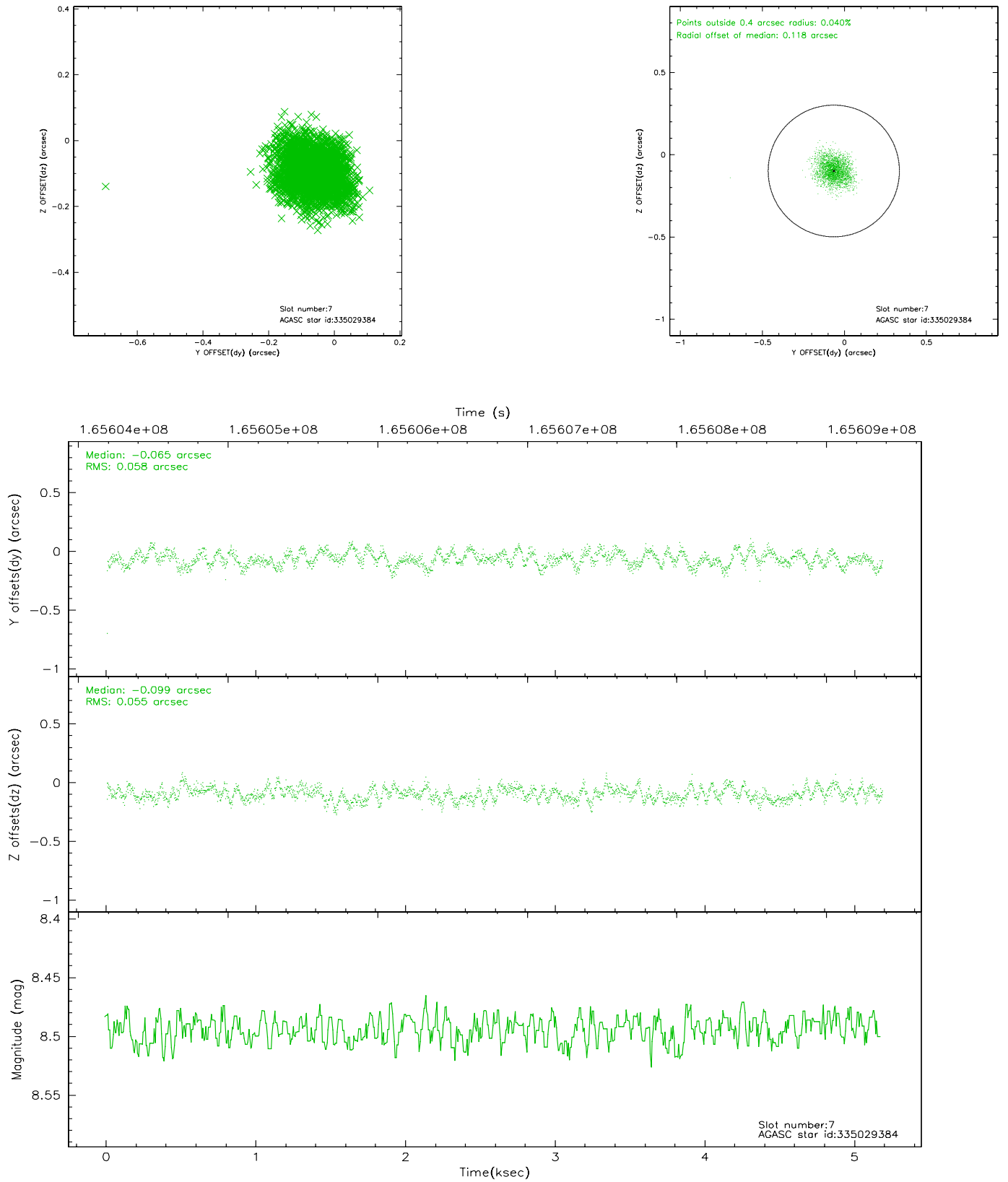
2.4.3 Slot 5



2.4.4 Slot 6

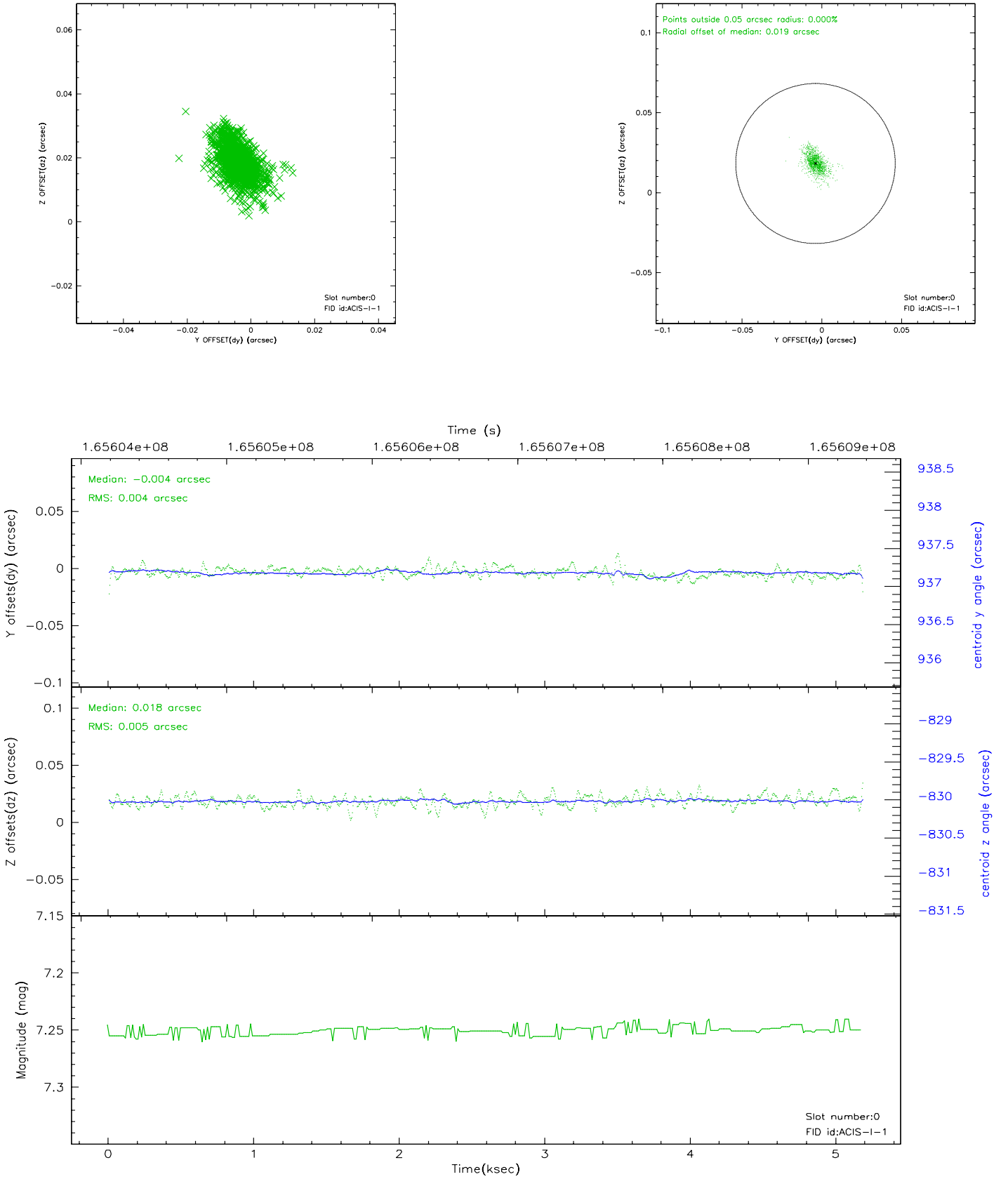


2.4.5 Slot 7

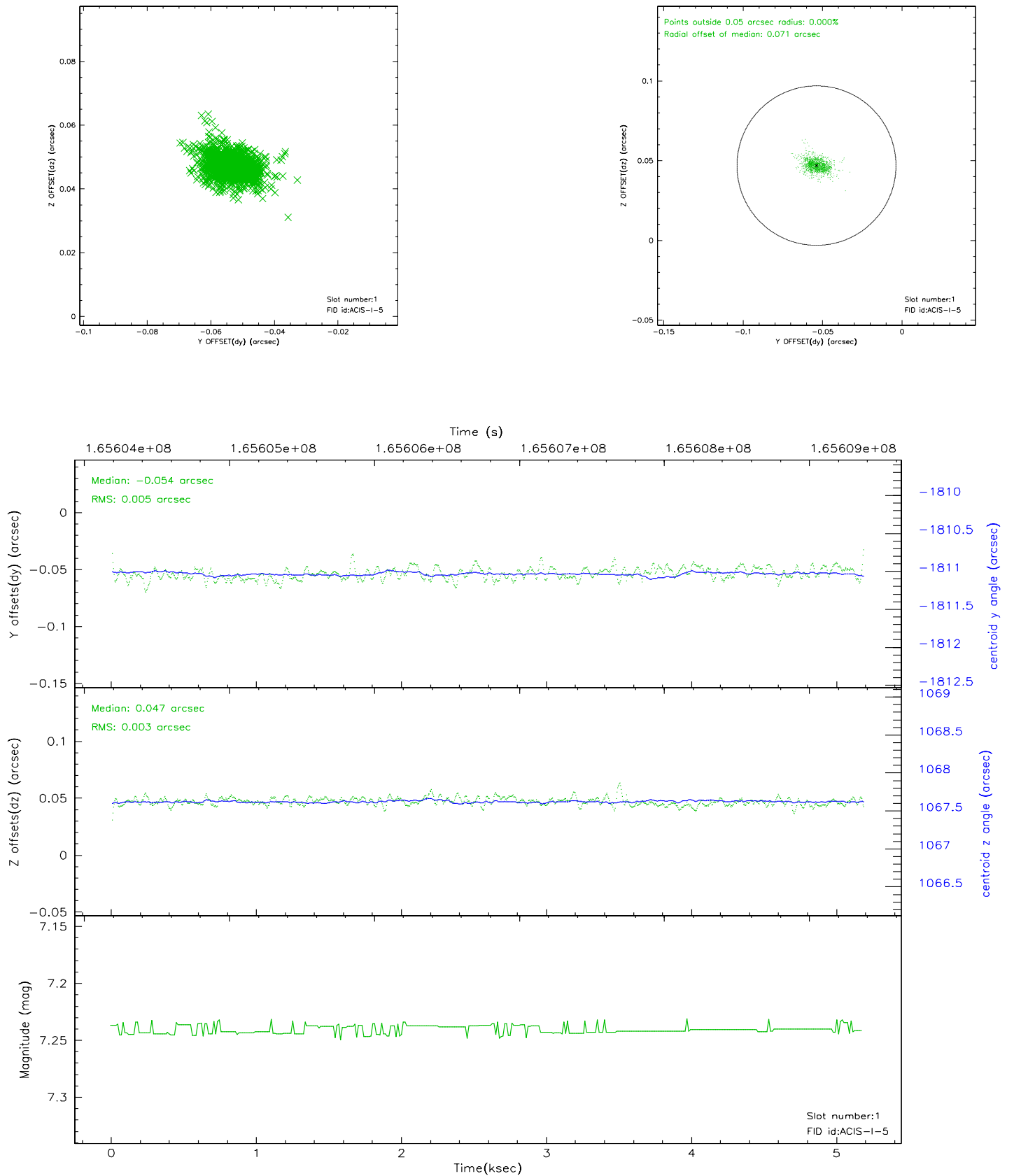


2.5 FID Slots

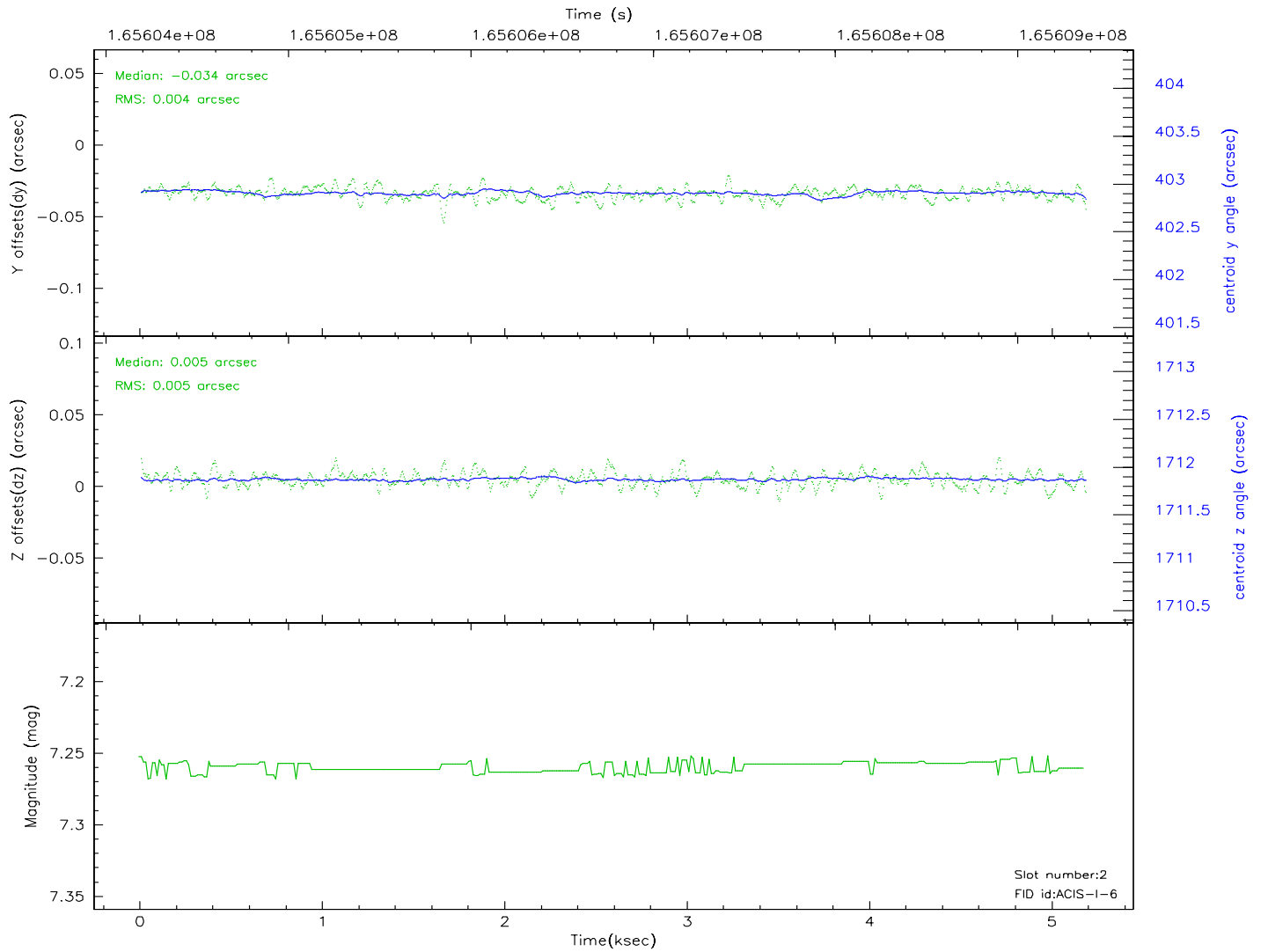
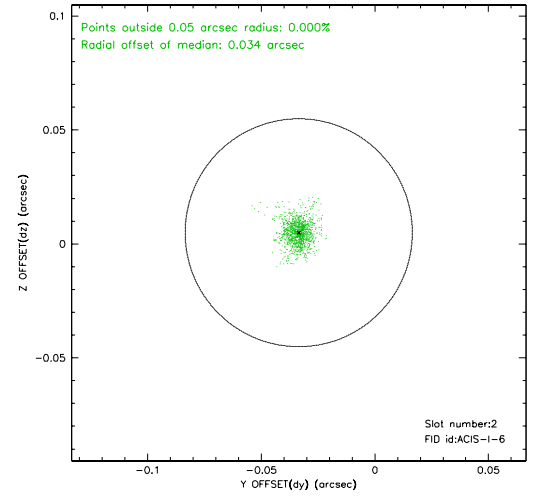
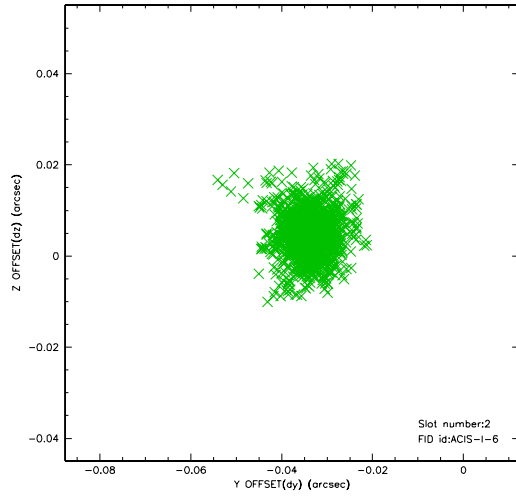
2.5.1 Slot 0



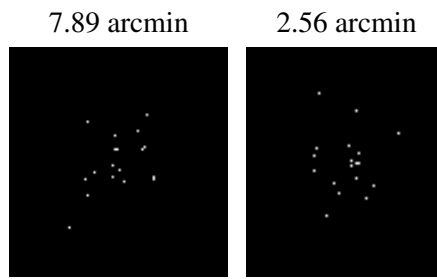
2.5.2 Slot 1



2.5.3 Slot 2



3 Point Sources



A Summary

A.1 Status

V&V Scientist	Jen Lauer
V&V Date (YYYY-MM-DD)	2006.07.30
V&V Edition	1
V&V Disposition and Status	OK
V&V Charge Time	4.777

A.2 Comments