

V&V Reference Report

L2 ASCDS Version : 7.6.8

Observation 4116 - L2 Version 001
Chandra X-Ray Center

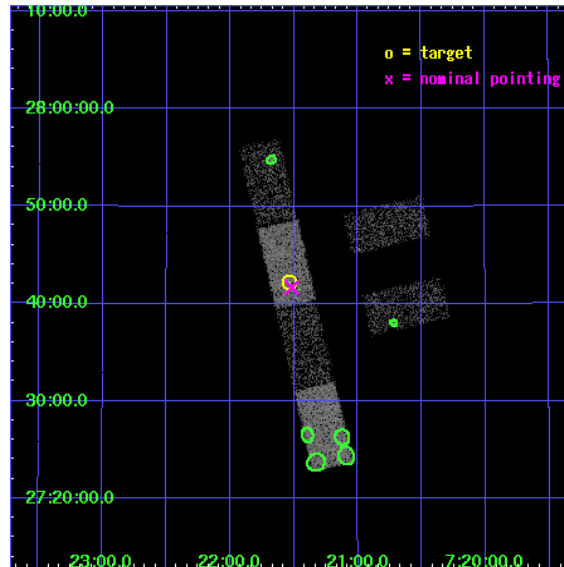
L2 Processing Date : Jul 27 2006

Contents

1	Front	2
2	OBI	3
2.1	OBI	3
2.1.1	Images	3
2.1.2	Bias	3
2.1.3	Parameters	4
2.1.4	Events	4
2.2	Compared Parameters	5
2.3	Aspect	6
2.4	Star Slots	9
2.4.1	Slot 3	9
2.4.2	Slot 4	10
2.4.3	Slot 5	11
2.4.4	Slot 6	12
2.4.5	Slot 7	13
2.5	FID Slots	14
2.5.1	Slot 0	14
2.5.2	Slot 1	15
2.5.3	Slot 2	16
3	Point Sources	17
A	Summary	18
A.1	Status	18
A.2	Comments	18

1 Front

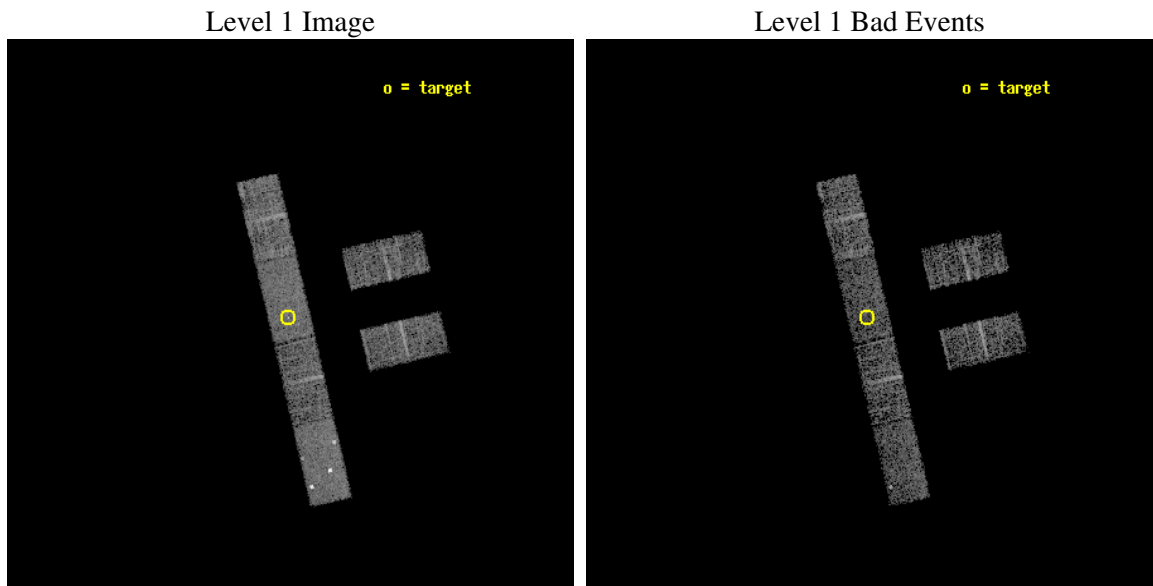
seq_num	700795
obs_id	4116
title	WHAT KIND OF JETS DOES NATURE MAKE? X-RAY CHARACTERIZATION OF THE FIRST FLAT SPECTRUM SAMPLE
observer	Dr. Giovanni Fossati
object	87GB 0718+2748
dtcycle	0
cycle	P
ra_targ	110.383333
dec_targ	27.703583
ra_nom	110.37920278697
dec_nom	27.694861920601
roll_nom	256.92952657354
revision	2
ontime	3645.0000241399
livetime	3563.7466016229
ontime2	3645.0000241399
ontime3	3645.0000241399
ontime5	3645.0000241399
ontime6	3645.0000241399
ontime7	3645.0000241399
ontime8	3645.0000241399
l2events	18434



2 OBI

2.1 OBI

2.1.1 Images

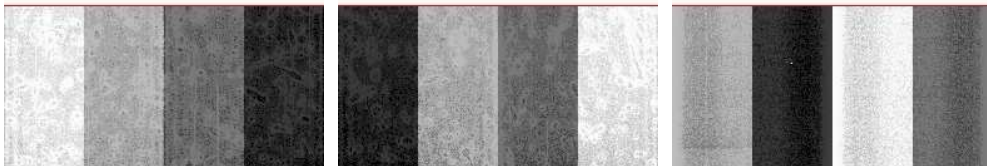


2.1.2 Bias

Chip 2

Chip 3

Chip 5



Chip 6

Chip 7

Chip 8



2.1.3 Parameters

obi_num	0
ascdsver	7.6.8
caldbver	3.2.2
date	2006-07-28T01:58:51
revision	2

sched_exp_time	3500.000000
ontime	4236.1811881959
ontime2	4236.1811881959
ontime3	4238.0222082734
ontime5	4238.0222082734
ontime6	4238.0222082734
ontime7	4236.1811881959
ontime8	4238.0222082734
l1events	104686

2.1.4 Events

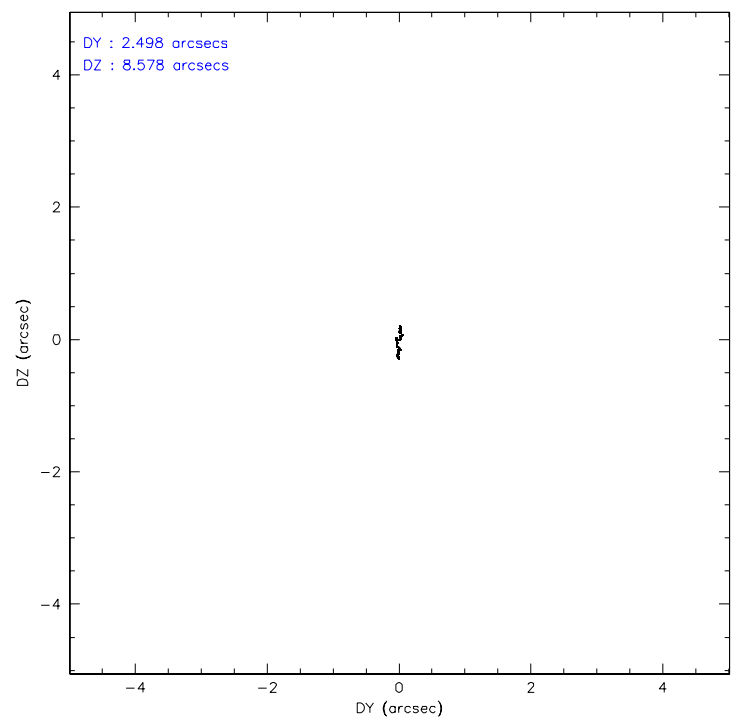
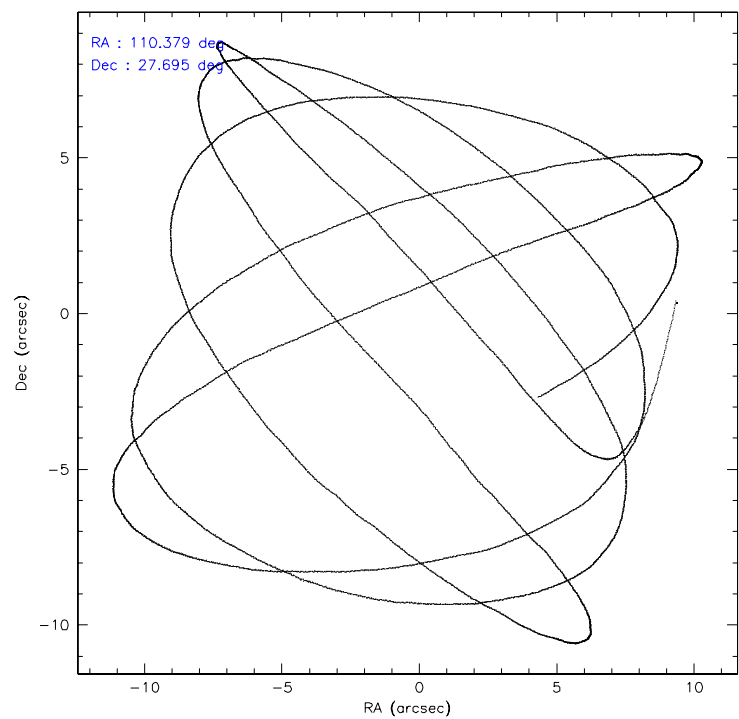
	ccd 2	ccd 3	ccd 5	ccd 6	ccd 7	ccd 8
level 1 events	14970	13950	23745	14612	18502	18907
rejected events	13513	12569	12855	13174	11960	15776
rejected %	90%	90%	54%	90%	64%	83%

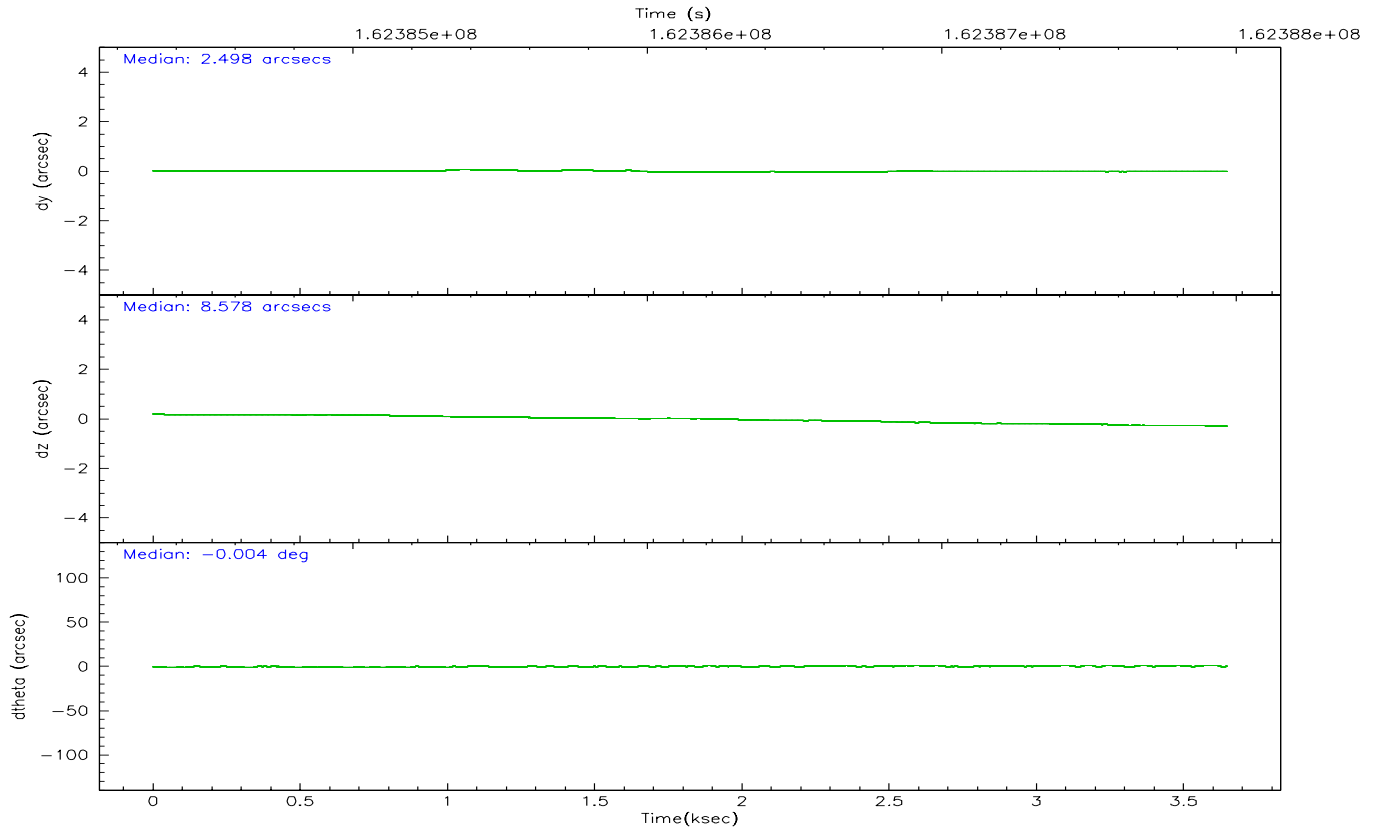
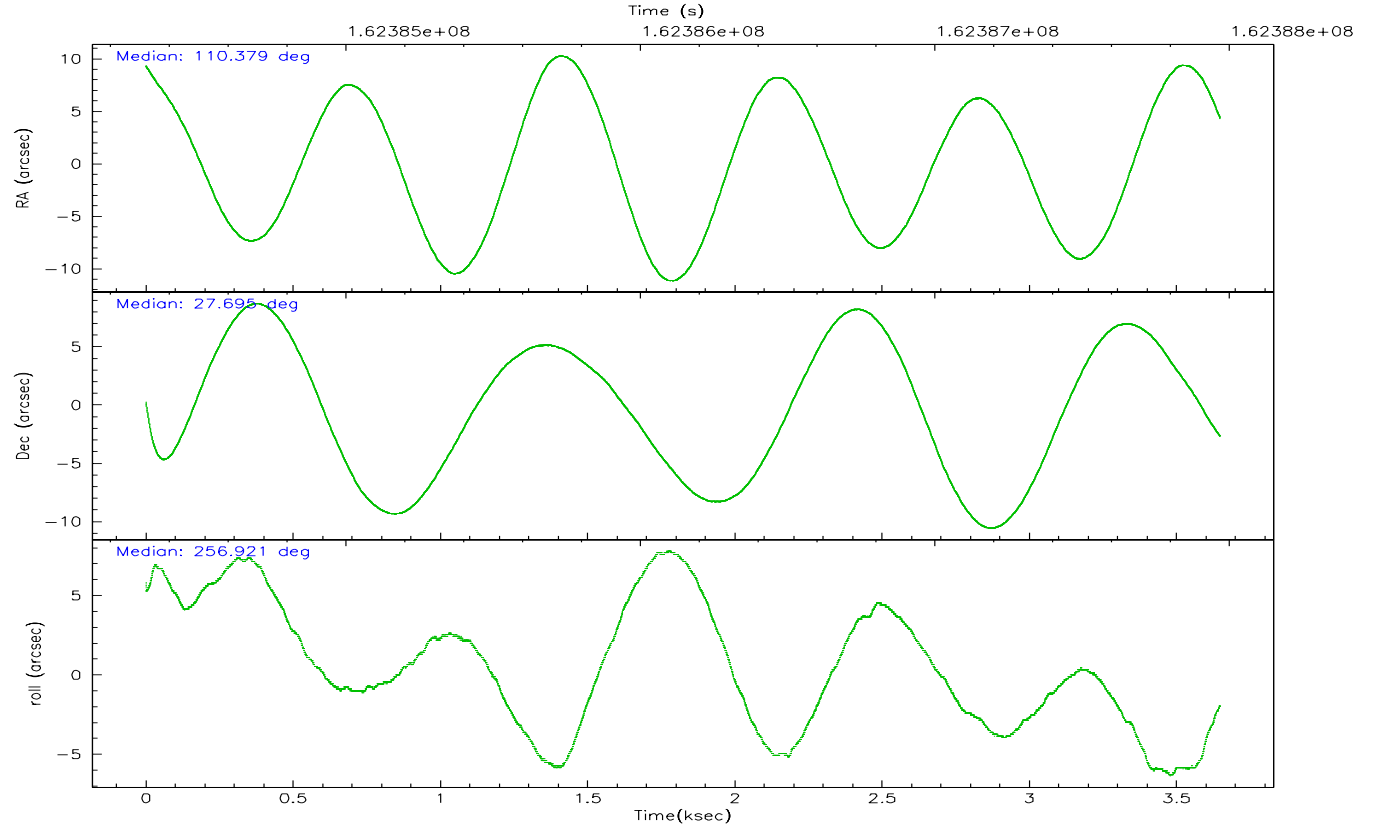
	ccd 2	ccd 3	ccd 5	ccd 6	ccd 7	ccd 8
grade 0 events	732	687	3899	692	559	1186
	4%	4%	16%	4%	3%	6%
grade 1 events	10	7	35	9	14	6
	0%	0%	0%	0%	0%	0%
grade 2 events	330	298	3406	278	1864	703
	2%	2%	14%	1%	10%	3%
grade 3 events	170	195	285	191	454	397
	1%	1%	1%	1%	2%	2%
grade 4 events	175	183	229	190	490	383
	1%	1%	0%	1%	2%	2%
grade 5 events	524	578	1009	575	1224	745
	3%	4%	4%	3%	6%	3%
grade 6 events	279	262	4822	326	4176	968
	1%	1%	20%	2%	22%	5%
grade 7 events	12750	11740	10060	12351	9721	14519
	85%	84%	42%	84%	52%	76%

2.2 Compared Parameters

Parameter	Planned	Actual	Parameter	Planned	Actual
Instrument	ACIS	ACIS	Obspar format version number	6	6
Detector	ACIS-235678	ACIS-235678	Obspar file type	PREDICTED	ACTUAL
Grating	NONE	NONE	Obspar update status	NONE	UPDATED
Data mode	FAINT	FAINT	On-chip summing requested	N	N
Observation mode	POINTING	POINTING	Subarray requested	1/2	1/2
Pointing RA	110.369674	110.3792027869728	Subarray start row	0	257
Pointing Dec	27.720633	27.69486192060058	Subarray row count	1024	512
Pointing Roll	256.777326	256.9295265735433	Alternating exposures requested	N	N
SIM focus pos (mm)	-0.684267	-0.6828225247311905	Primary exposure time	0.000000	1.8
SIM defocus (mm)	0	0.001444936568705701			
SIM translation stage pos (mm)	-190.132523	-190.1400660498719			
SIM translation stage offset (mm)	0	0.00754346686406393			
Observation start time	162384468.184000	162383342.17333			
Observation start date	2003-02-23T10:46:44	2003-02-23T10:29:02			
Observation end time	162387968.184000	162388480.49855			
Observation end date	2003-02-23T11:45:04	2003-02-23T11:54:40			
Read mode	TIMED	TIMED			

2.3 Aspect



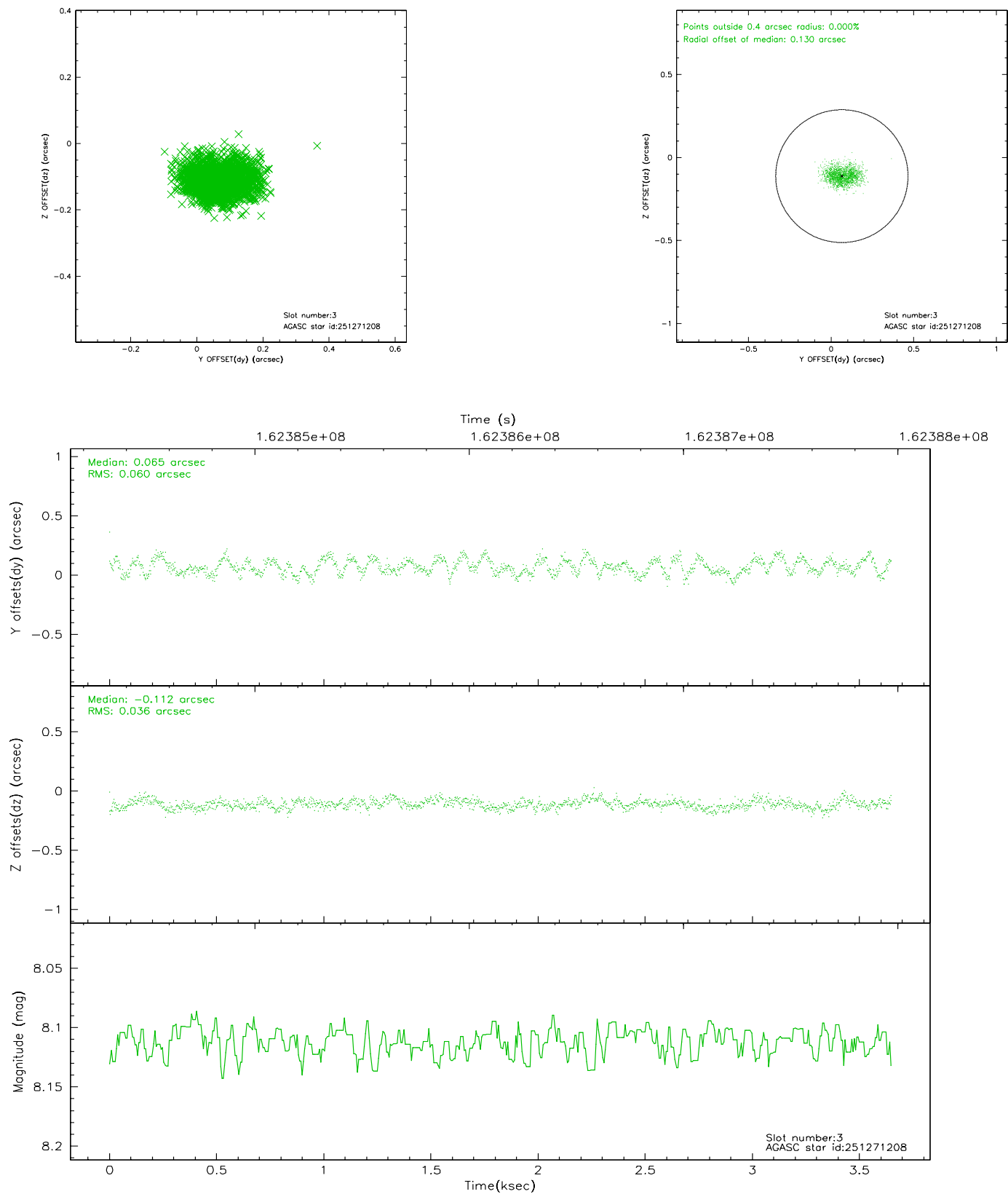


Slot Statistics

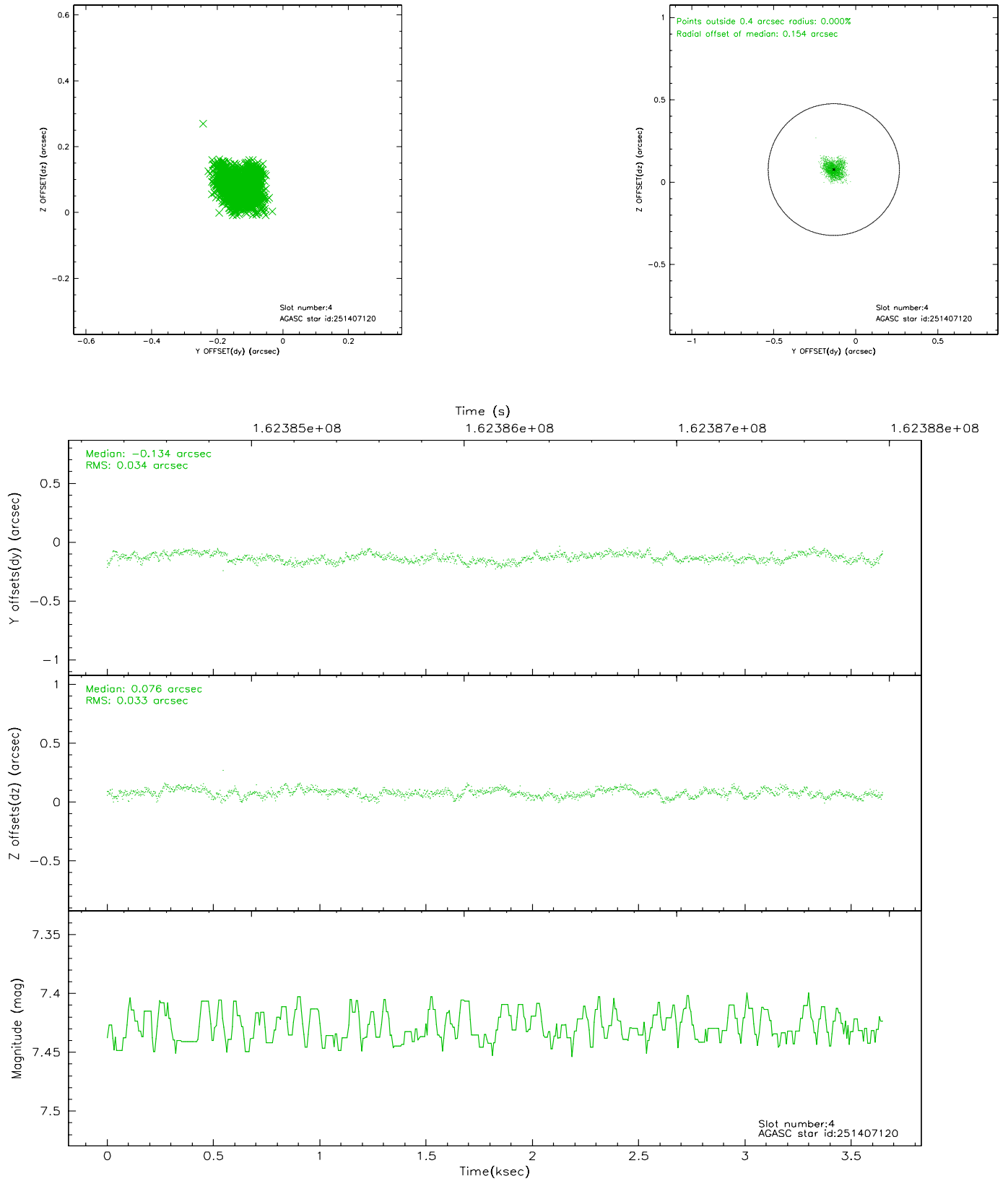
slot	status	id	mag	n_pts	med_dy	med_dz	dr1	dr2	ra	dec	mean_y	mean_z
0	FID	ACIS-S-2	7.10	890	-0.009	0.016	0.007	0.011	0.000000	0.000000	-755.14	-1729.74
1	FID	ACIS-S-4	7.20	890	-0.064	0.000	0.005	0.010	0.000000	0.000000	2157.31	176.94
2	FID	ACIS-S-5	7.24	891	0.042	-0.007	0.006	0.010	0.000000	0.000000	-1805.71	172.57
3	GUIDE	251271208	8.11	1781	0.065	-0.112	0.075	0.119	109.620289	27.252852	2182.42	-1950.63
4	GUIDE	251407120	7.43	1780	-0.134	0.076	0.051	0.080	110.985598	27.794519	-710.68	1846.25
5	GUIDE	251799824	9.55	1781	-0.035	0.083	0.101	0.162	110.698742	28.158561	-1774.73	656.62
6	GUIDE	251276032	9.80	1781	0.119	-0.094	0.125	0.198	109.696777	27.274835	2049.29	-1729.91
7	GUIDE	251408192	9.26	1779	-0.021	0.043	0.110	0.182	111.193296	27.883590	-1177.63	2413.97

2.4 Star Slots

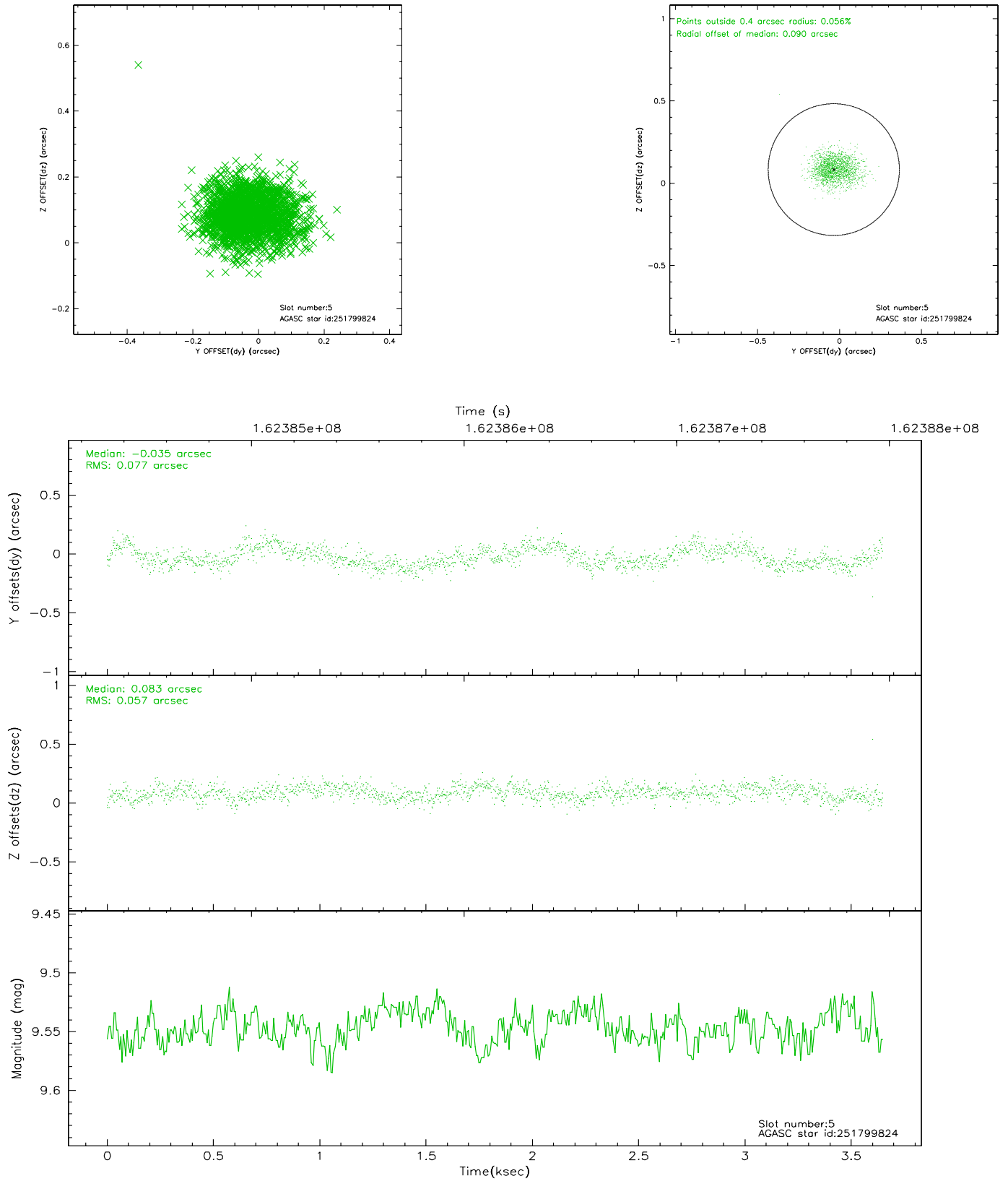
2.4.1 Slot 3



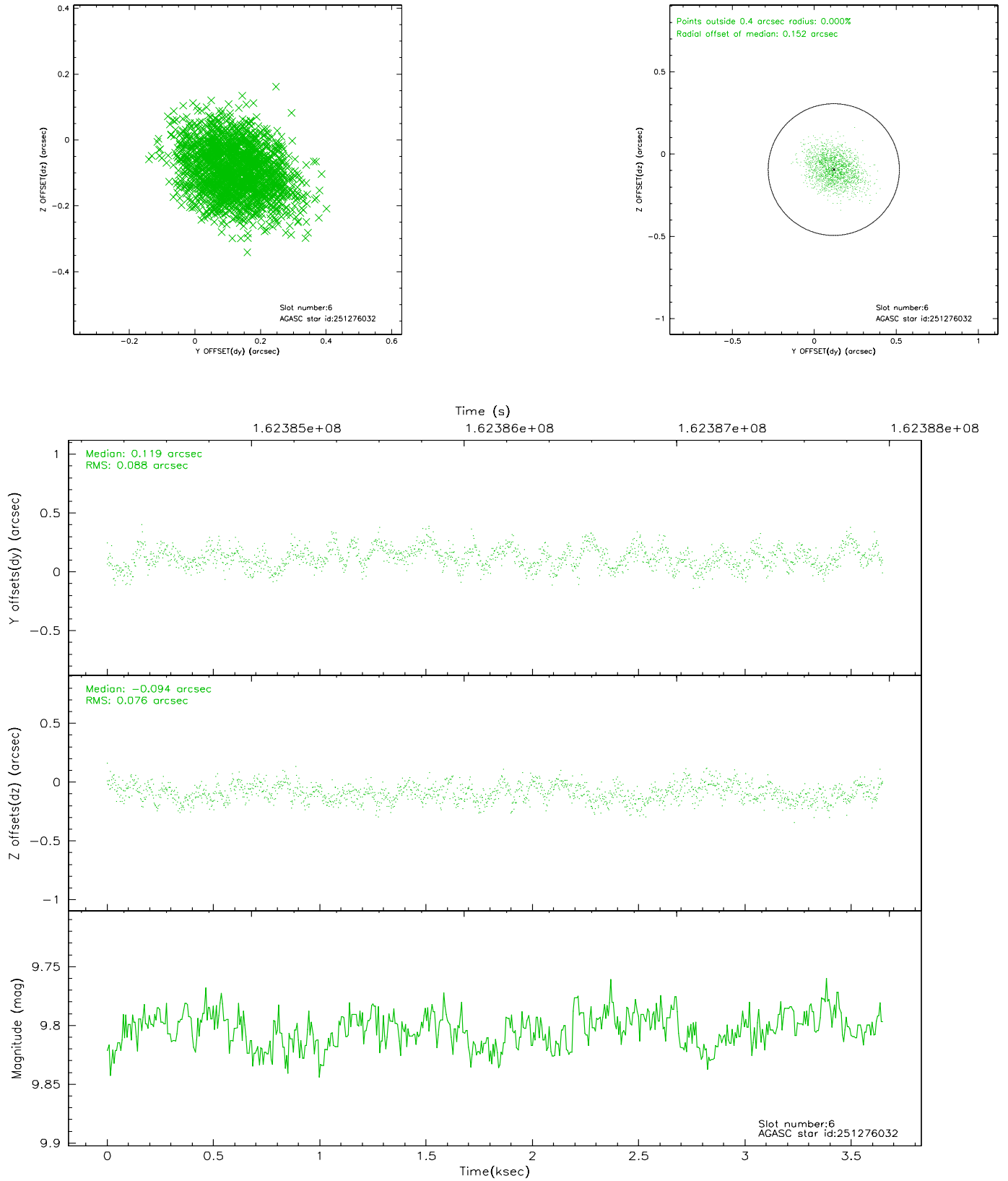
2.4.2 Slot 4



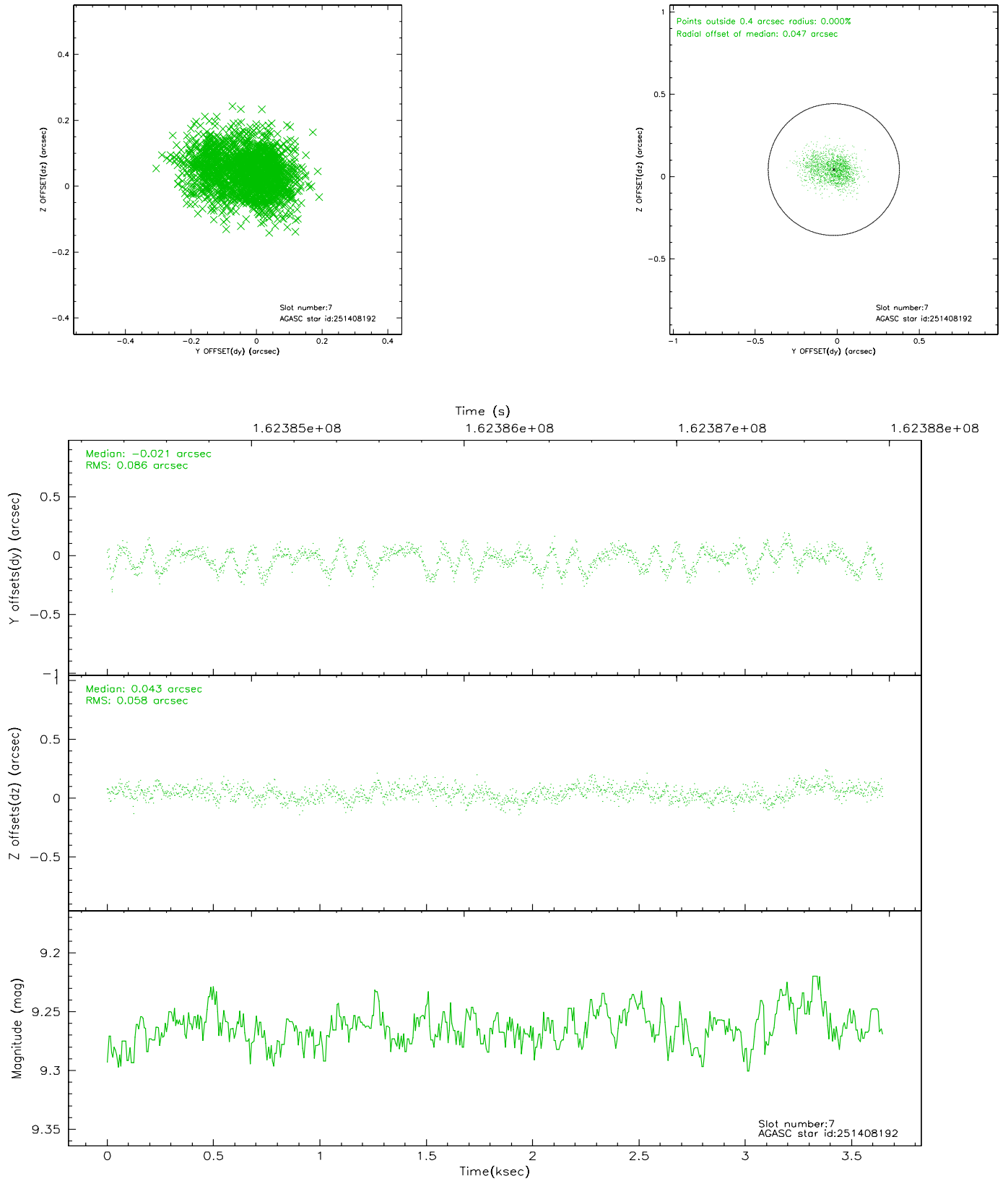
2.4.3 Slot 5



2.4.4 Slot 6

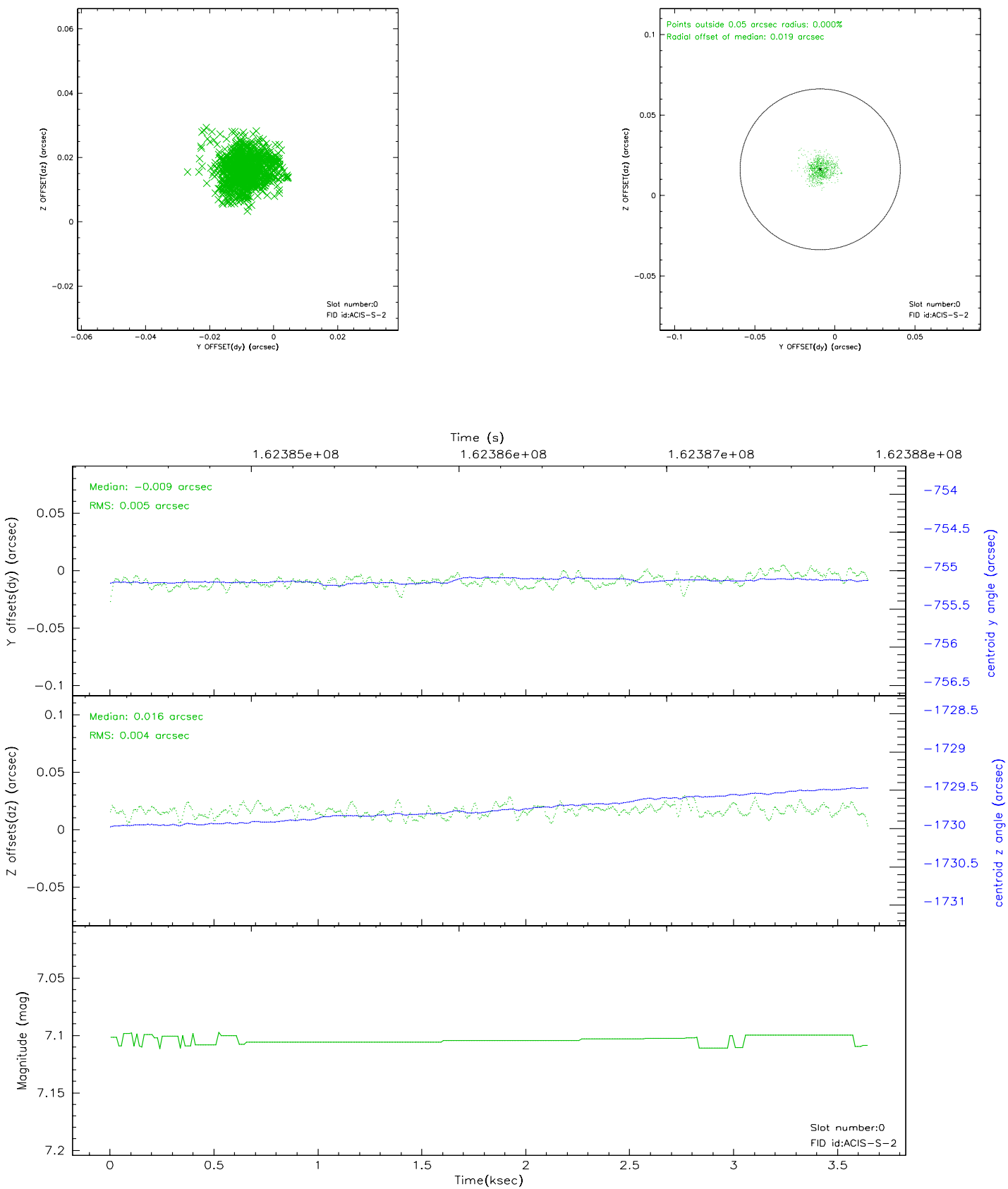


2.4.5 Slot 7

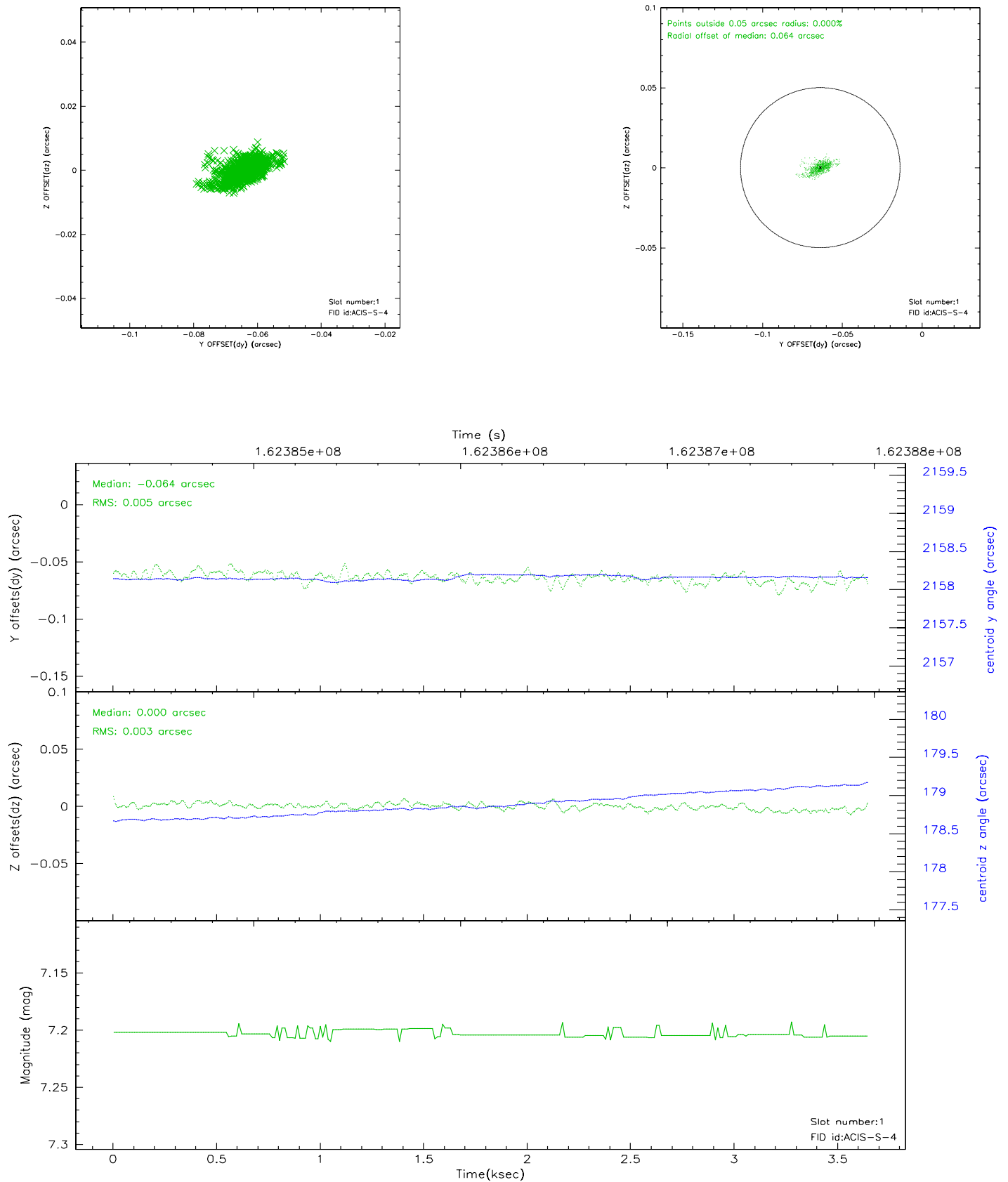


2.5 FID Slots

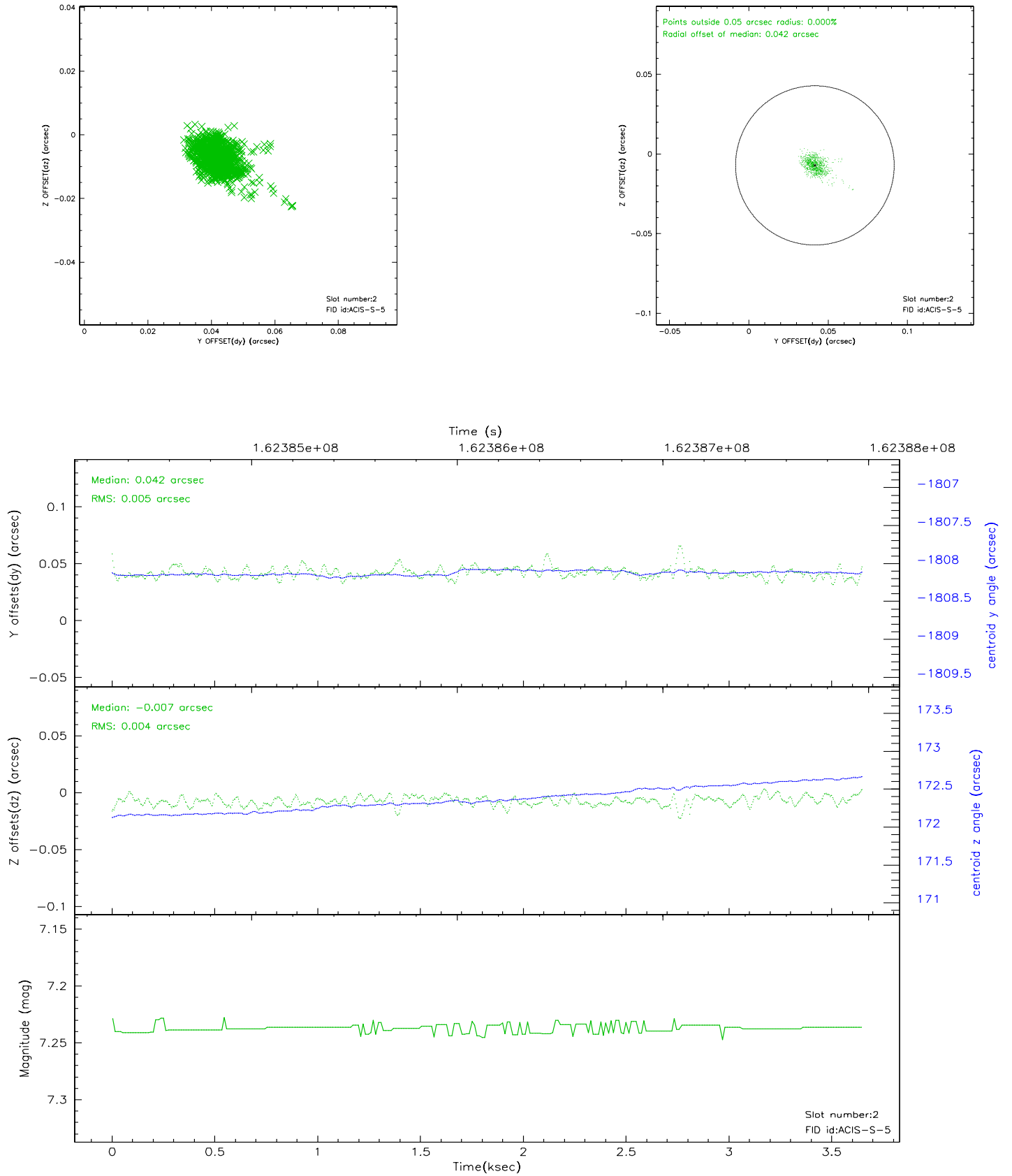
2.5.1 Slot 0



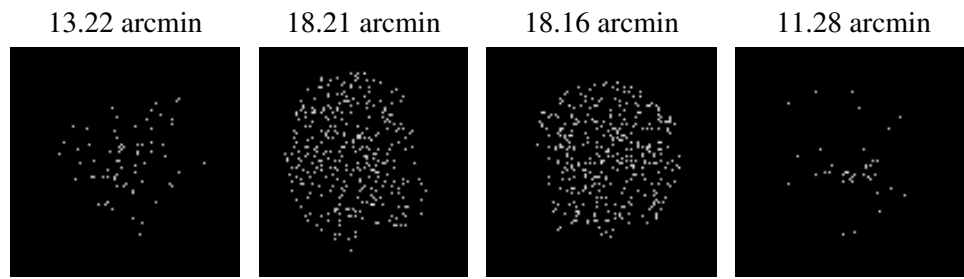
2.5.2 Slot 1



2.5.3 Slot 2



3 Point Sources



A Summary

A.1 Status

V&V Scientist	Jen Lauer
V&V Date (YYYY-MM-DD)	2006.07.28
V&V Edition	1
V&V Disposition and Status	OK
V&V Charge Time	3.645

A.2 Comments