

V&V Reference Report

L2 ASCDS Version : 8.4.5

Observation 4076 - L2 Version 3
Chandra X-Ray Center

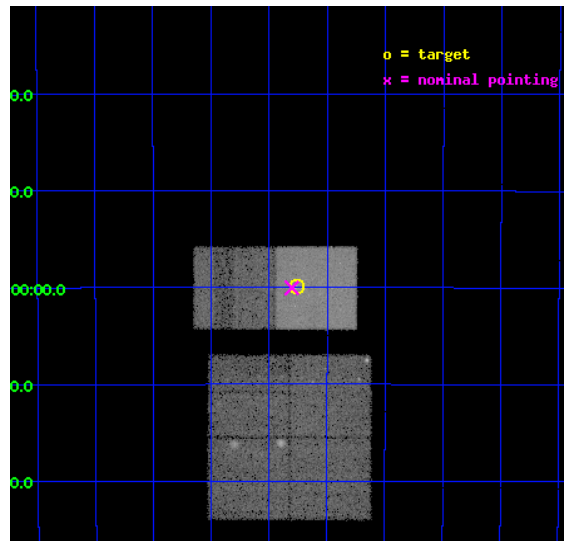
L2 Processing Date : Nov 8 2012

Contents

1	Front	2
2	OBI	3
2.1	OBI	3
2.1.1	Images	3
2.1.2	Bias	3
2.1.3	Parameters	4
2.1.4	Events	4
2.2	Compared Parameters	5
2.3	Aspect	6
2.4	Star Slots	9
2.4.1	Slot 3	9
2.4.2	Slot 4	10
2.4.3	Slot 5	11
2.4.4	Slot 6	12
2.4.5	Slot 7	13
2.5	FID Slots	14
2.5.1	Slot 0	14
2.5.2	Slot 1	15
2.5.3	Slot 2	16
A	Summary	17
A.1	Status	17
A.2	Comments	17

1 Front

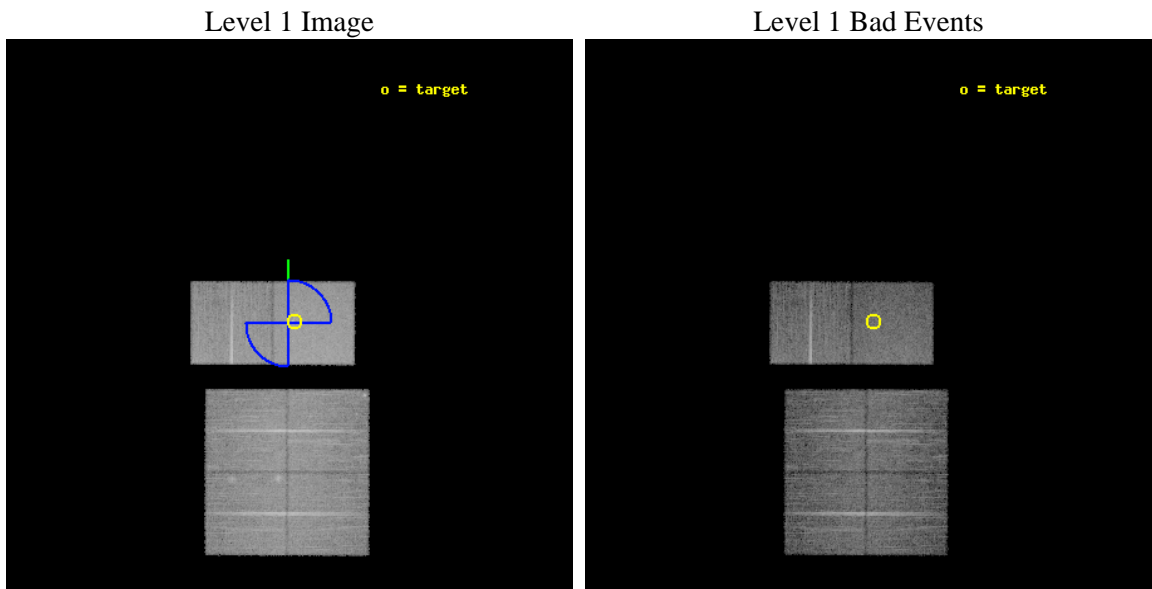
seq_num	700755	Sequence number
obs_id	4076	Observation id
title	PROBING THE STRUCTURE OF THE NARROW-LINE REGION IN SEYFERT GALAXIES WITH CXO IMAGING SPECTROSCOPY	Proposal title
observer	Dr. Steven Kraemer	Principal investigator
object	NGC 1386	Source name
dtcycle	0	
cycle	P	events from which exps? Prim/Second/Both
ra_targ	54.189167	Observer's specified target RA [deg]
dec_targ	-35.999083	Observer's specified target Dec [deg]
ra_nom	54.200950305239	Nominal RA [deg]
dec_nom	-36.000741262095	Nominal Dec [deg]
roll_nom	0.16355003275802	Nominal Roll [deg]
revision	3	Processing version of data
ontime	19887.999925911	Sum of GTIs [s]
livetime	19636.166095734	Livetime [s]
ontime0	19887.999925911	Sum of GTIs [s]
ontime1	19887.999925911	Sum of GTIs [s]
ontime2	19887.999925911	Sum of GTIs [s]
ontime3	19887.999925911	Sum of GTIs [s]
ontime6	19887.999925911	Sum of GTIs [s]
ontime7	19887.999925911	Sum of GTIs [s]
l2events	149208	Number of level 2 events



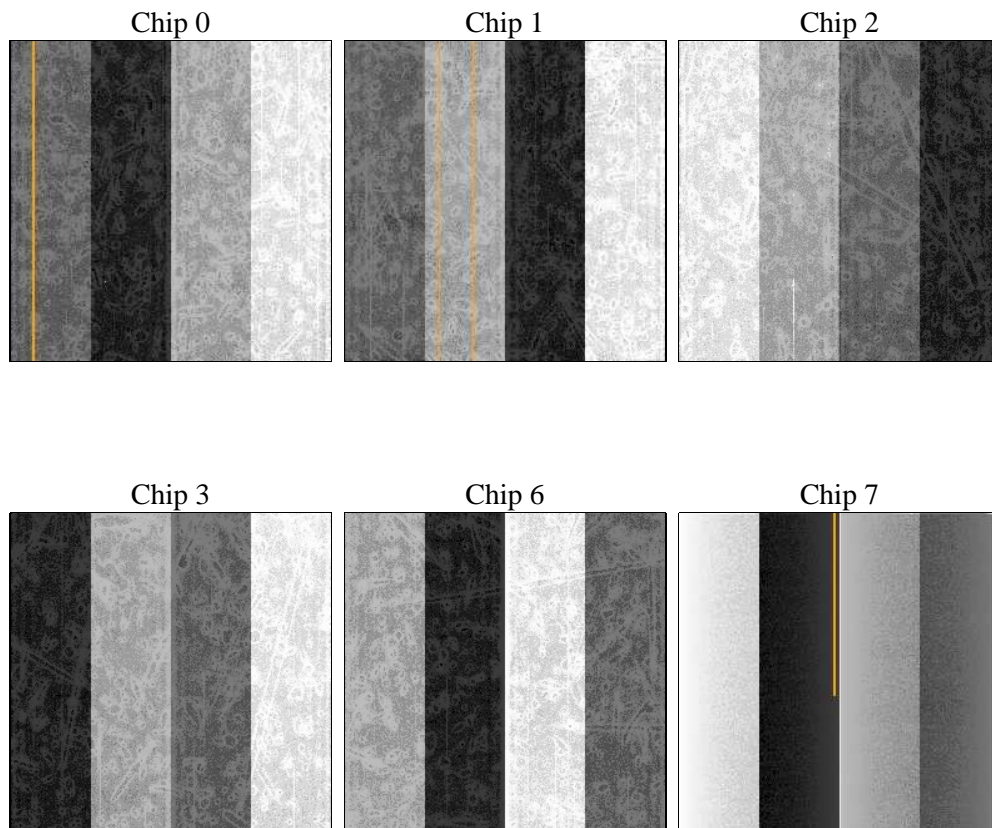
2 OBI

2.1 OBI

2.1.1 Images



2.1.2 Bias



2.1.3 Parameters

obi_num	0	Obi number	sched_exp_time	19750.000000	[s] Scheduled observation exposure time
ascdsver	8.4.5	Processing system revision	ontime	19887.999925911	Sum of GTIs [s]
caldsver	4.5.2	 	ontime0	19887.999925911	Sum of GTIs [s]
date	2012-11-08T02:33:09	Date and time of file creation	ontime1	19887.999925911	Sum of GTIs [s]
revision	3	Processing version of data	ontime2	19887.999925911	Sum of GTIs [s]
			ontime3	19887.999925911	Sum of GTIs [s]
			ontime6	19887.999925911	Sum of GTIs [s]
			ontime7	19887.999925911	Sum of GTIs [s]
			l1events	690628	Number of level 1 events

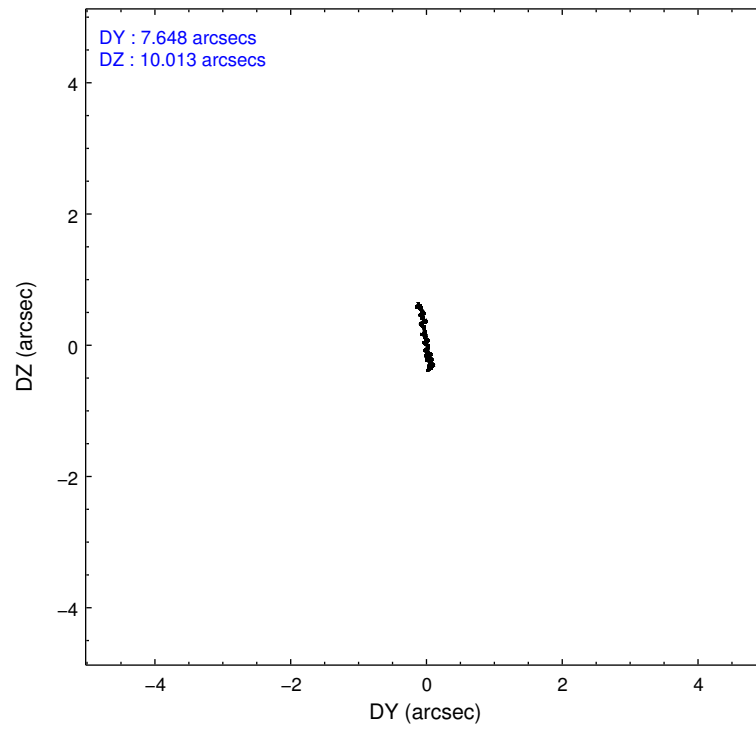
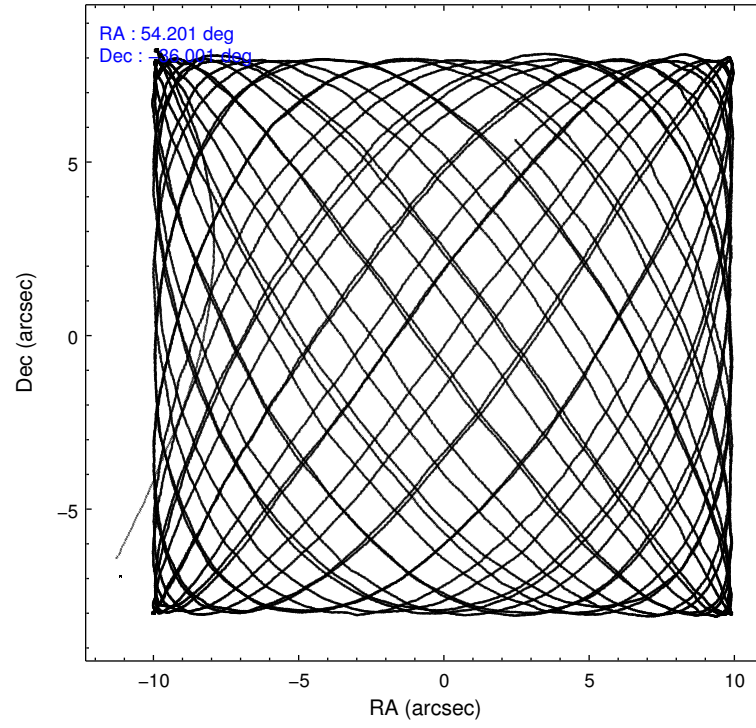
2.1.4 Events

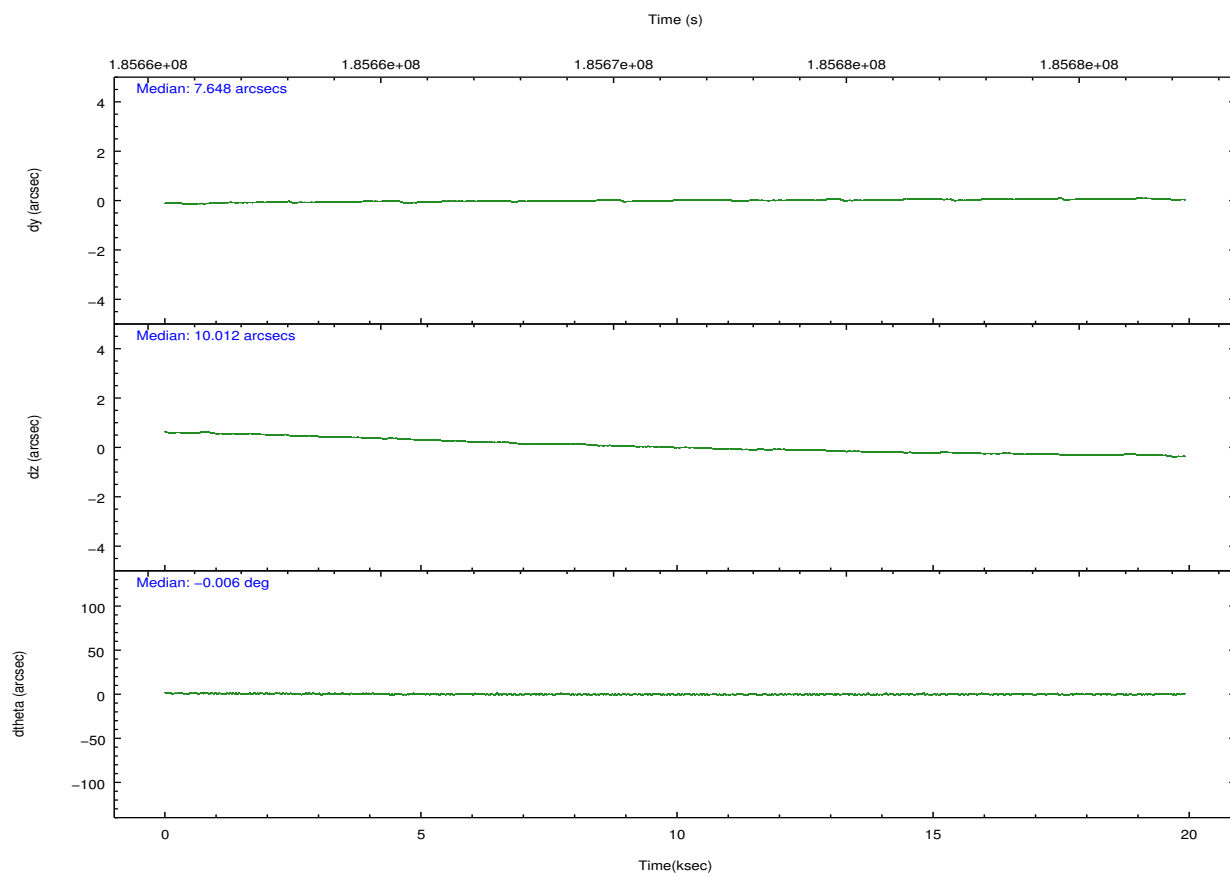
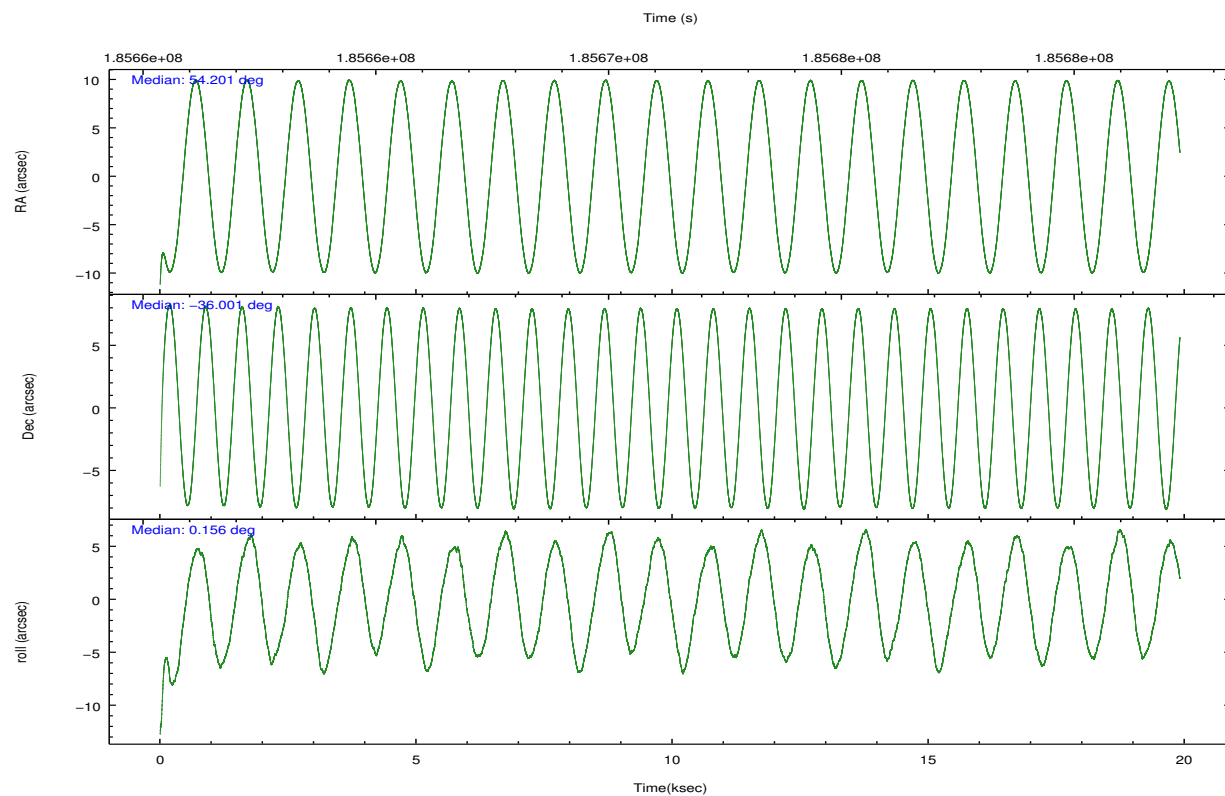
	ccd 0	ccd 1	ccd 2	ccd 3	ccd 6	ccd 7		ccd 0	ccd 1	ccd 2	ccd 3	ccd 6	ccd 7
level 1 events	105397	101379	107889	110095	115219	150649	grade 0 events	9441	7176	8443	8506	8543	7226
rejected events	84771	82110	89455	90885	95296	85240		8%	7%	7%	7%	7%	4%
rejected %	80%	80%	82%	82%	82%	56%	grade 1 events	68	50	94	60	59	161
								0%	0%	0%	0%	0%	0%
							grade 2 events	4913	5296	3942	4688	5089	13185
								4%	5%	3%	4%	4%	8%
							grade 3 events	1404	1447	1310	1284	1310	5819
								1%	1%	1%	1%	1%	3%
							grade 4 events	1351	1362	1450	1329	1309	5870
								1%	1%	1%	1%	1%	3%
							grade 5 events	4421	4504	3954	4675	5049	13799
								4%	4%	3%	4%	4%	9%
							grade 6 events	3526	3994	3298	3412	3686	33324
								3%	3%	3%	3%	3%	22%
							grade 7 events	80273	77550	85398	86141	90174	71265
								76%	76%	79%	78%	78%	47%

2.2 Compared Parameters

Parameter	Planned	Actual	Parameter	Planned	Actual
Instrument	ACIS	ACIS	Obspar format version number	7	7
Detector	ACIS-012367	ACIS-012367	Obspar file type	PREDICTED	ACTUAL
Grating	NONE	NONE	Obspar update status	NONE	UPDATED
Data mode	FAINT	FAINT	Number of optional ACIS chips dropped	0	0
Observation mode	POINTING	POINTING	On-chip summing requested	N	N
[deg] Pointing RA	54.172067	54.20095030523876	Subarray requested	NONE	NONE
[deg] Pointing Dec	-36.014753	-36.00074126209508	Alternating exposures requested	N	N
[deg] Pointing Roll	359.989945	0.163550032758025	[s] Primary exposure time	0.000000	3.2
[deg] Roll angle	45.000000	45.000000			
[deg] Roll tolerance	45.000000	45.000000			
Roll constraint allows 180D rotation	Y	Y			
[mm] SIM focus pos	-0.684267	-0.6828225247311905			
[mm] SIM defocus	0	0.001444936568705701			
[mm] SIM translation stage pos	-190.132523	-190.1400660498719			
[mm] SIM translation stage offset	0	0.00754346686406393			
[s] Observation start time (MET)	185661526.184000	185660479.70237			
Observation start date	2003-11-19T20:37:42	2003-11-19T20:21:19			
[s] Observation end time (MET)	185681276.184000	185682169.72831			
Observation end date	2003-11-20T02:06:52	2003-11-20T02:22:49			
Read mode	TIMED	TIMED			

2.3 Aspect



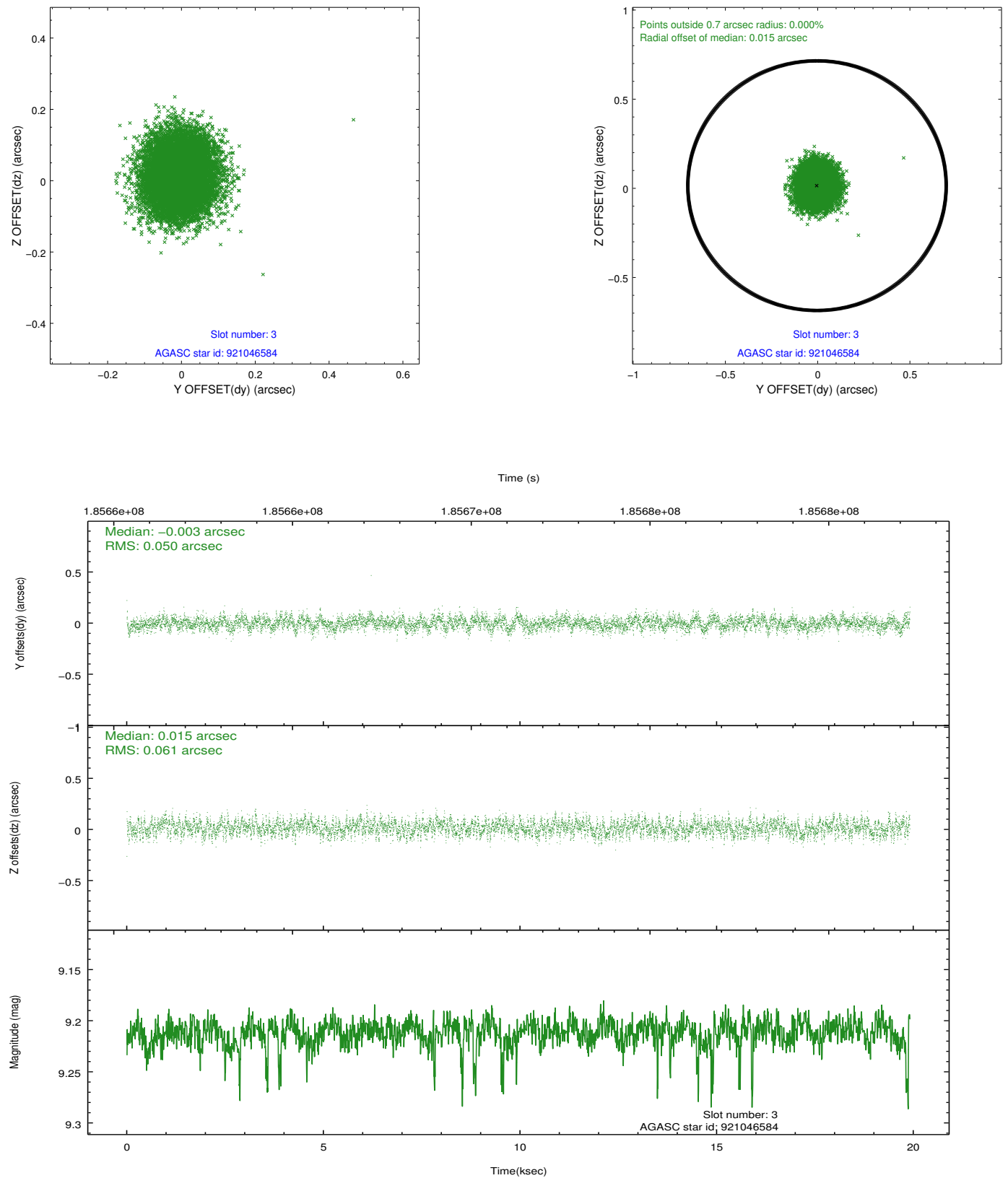


Slot Statistics

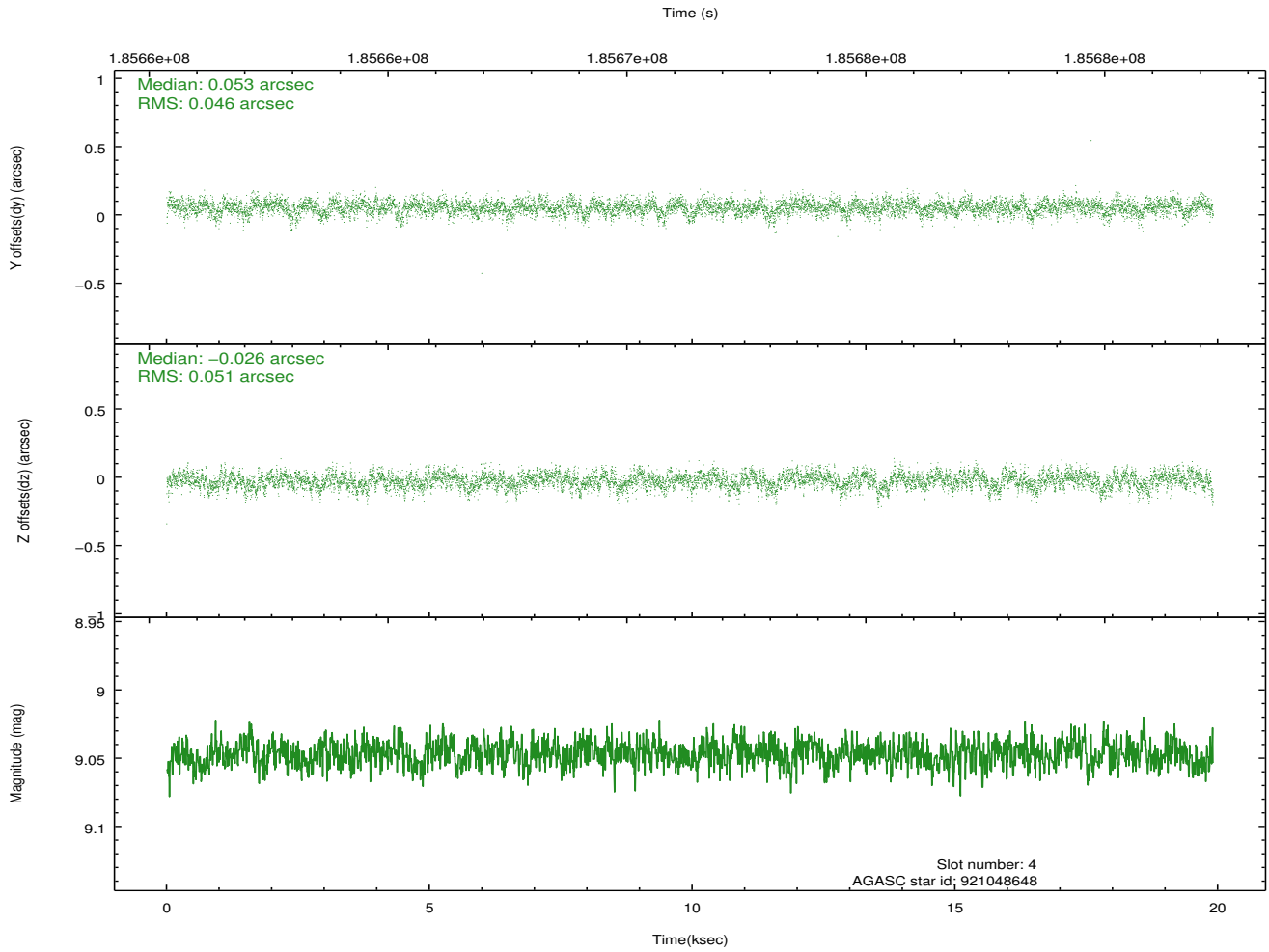
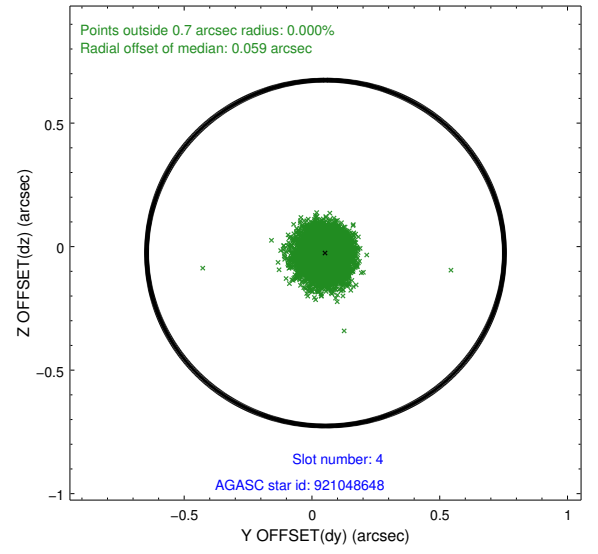
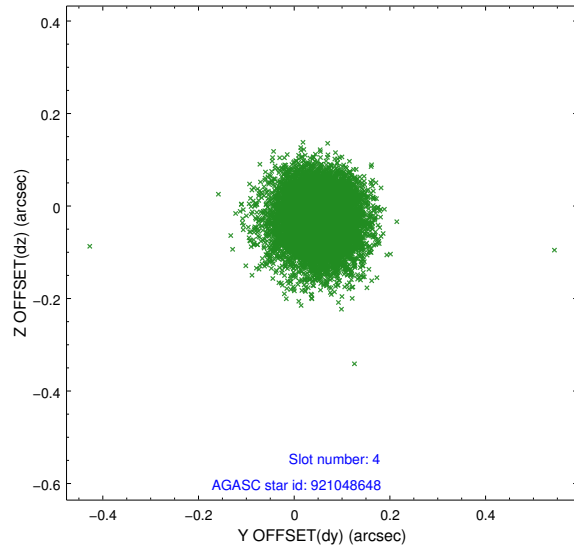
slot	status	id	mag	n_pts	med_dy	med_dz	dr1	dr2	ra	dec	mean_y	mean_z
0	FID	ACIS-S-1	7.18	4857	0.035	-0.035	0.014	0.029	0.000000	0.000000	935.67	-1726.98
1	FID	ACIS-S-5	7.24	4857	-0.060	0.026	0.008	0.013	0.000000	0.000000	-1813.32	170.43
2	FID	ACIS-S-6	7.35	4857	0.004	0.020	0.018	0.033	0.000000	0.000000	400.98	814.61
3	GUIDE	921046584	9.21	9705	-0.003	0.015	0.084	0.134	53.976815	-36.314393	-565.71	-1079.42
4	GUIDE	921048648	9.05	9707	0.053	-0.026	0.072	0.119	53.884610	-35.870023	-838.35	519.68
5	GUIDE	921966544	7.91	9714	-0.044	-0.023	0.042	0.068	54.743508	-35.636012	1671.60	1359.08
6	GUIDE	921966928	8.77	9711	-0.039	0.035	0.067	0.109	54.599932	-36.625009	1237.42	-2199.01
7	GUIDE	921967072	7.66	9713	0.033	0.001	0.057	0.091	54.269247	-36.292226	282.77	-999.12

2.4 Star Slots

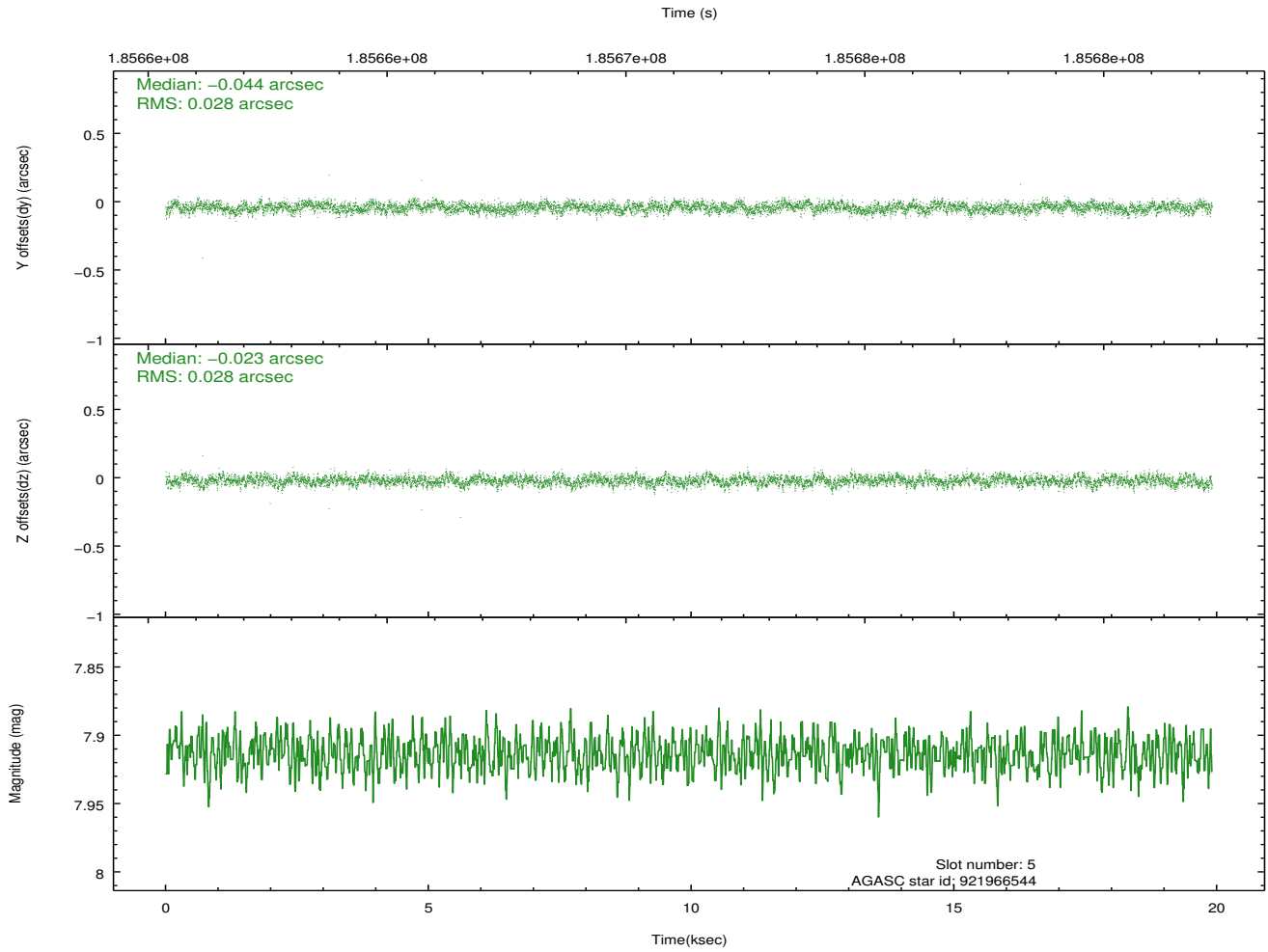
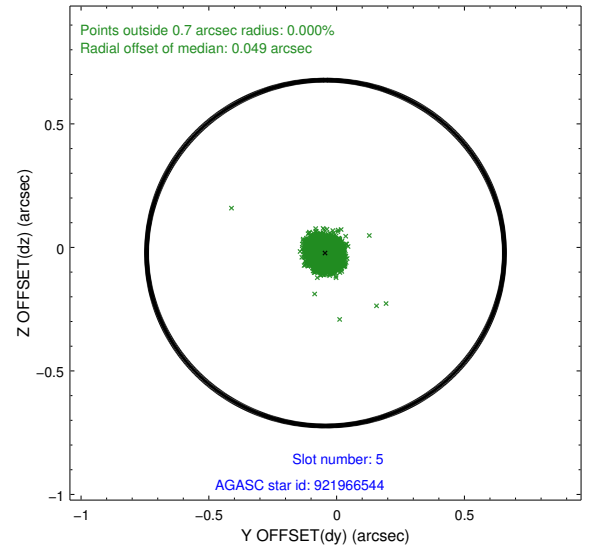
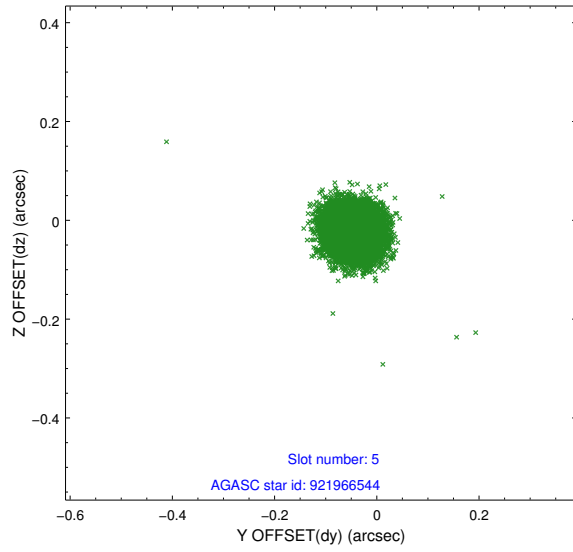
2.4.1 Slot 3



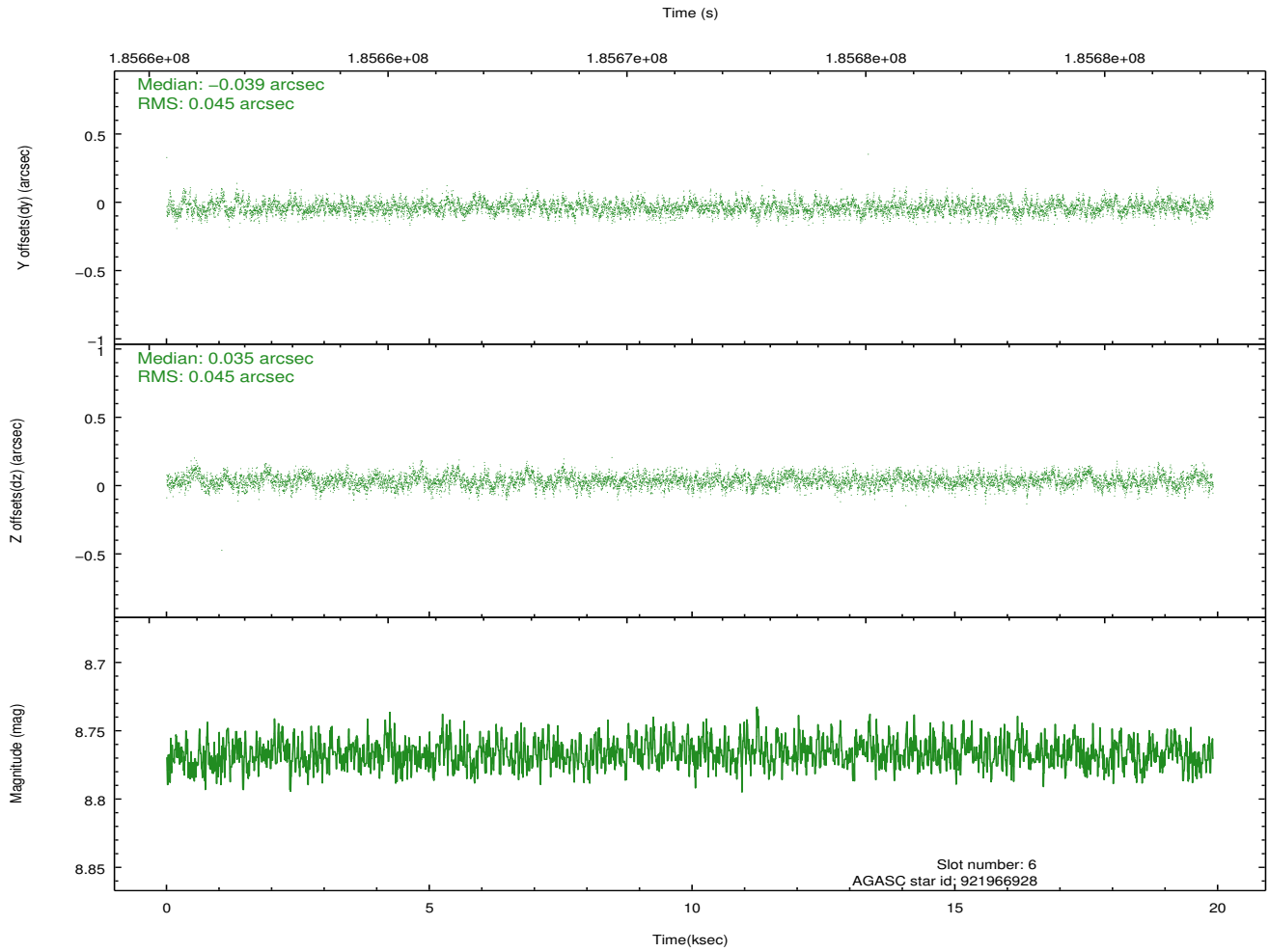
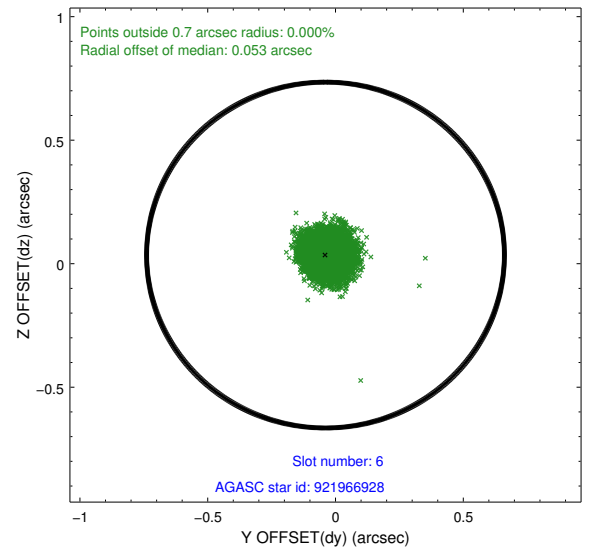
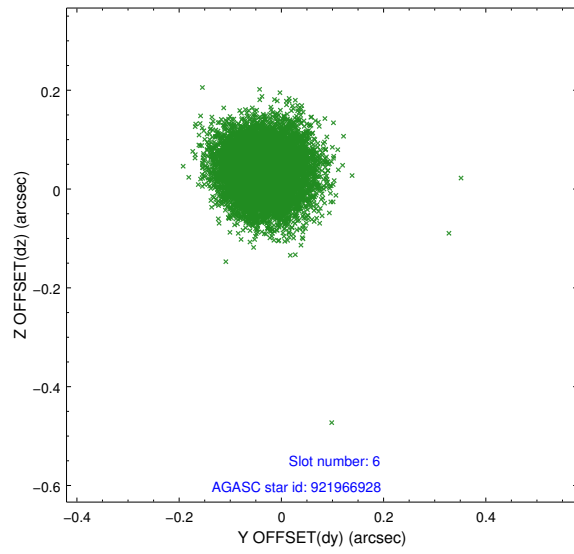
2.4.2 Slot 4



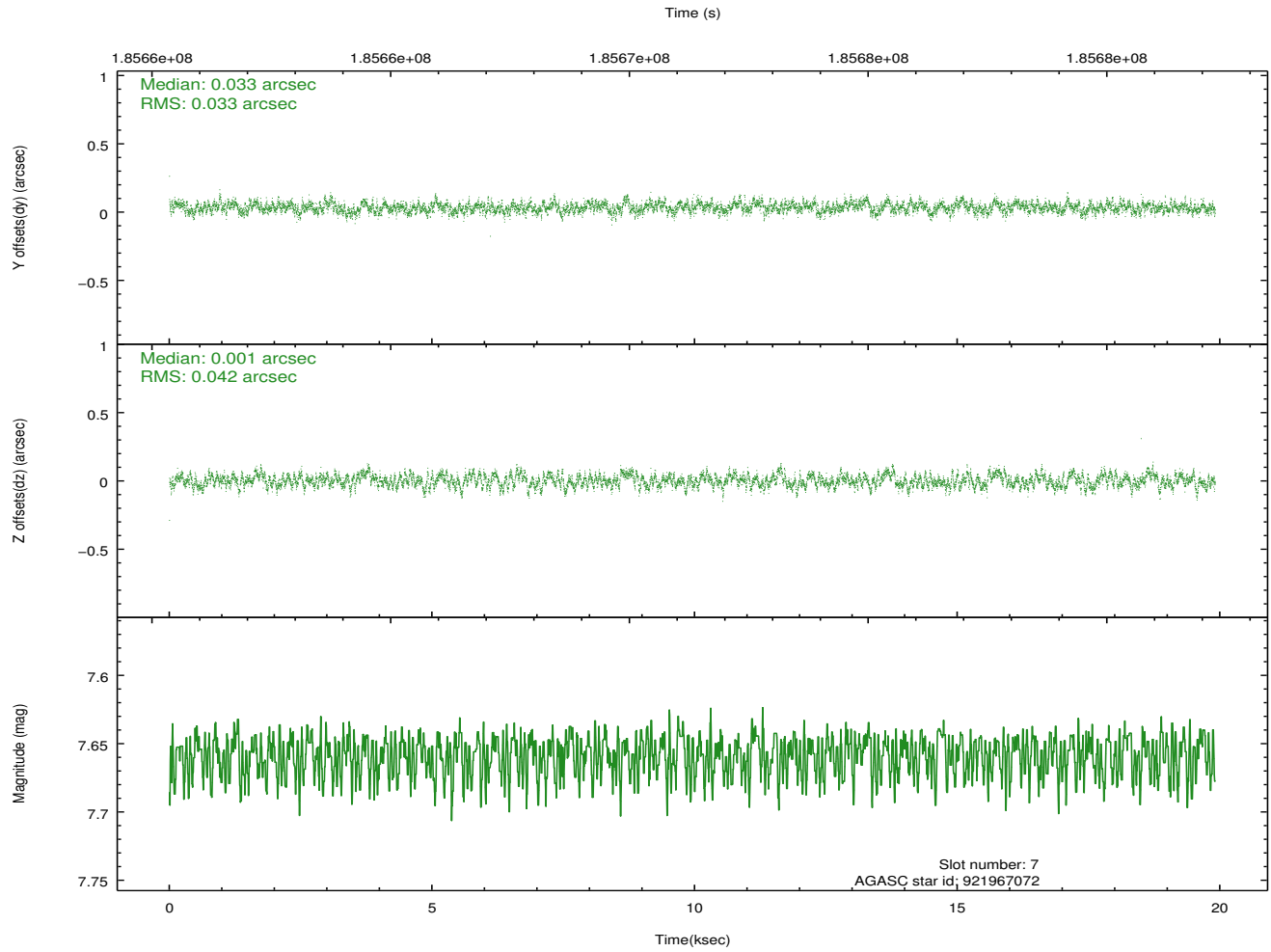
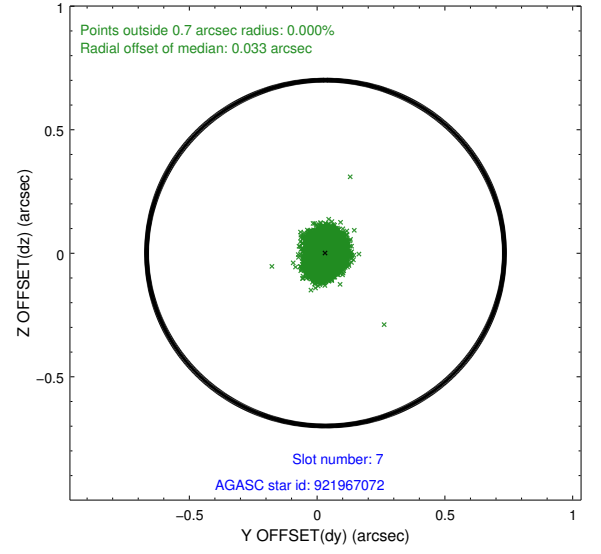
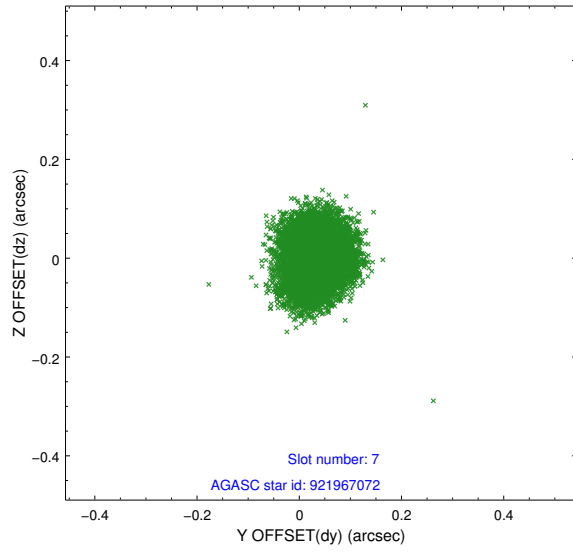
2.4.3 Slot 5



2.4.4 Slot 6

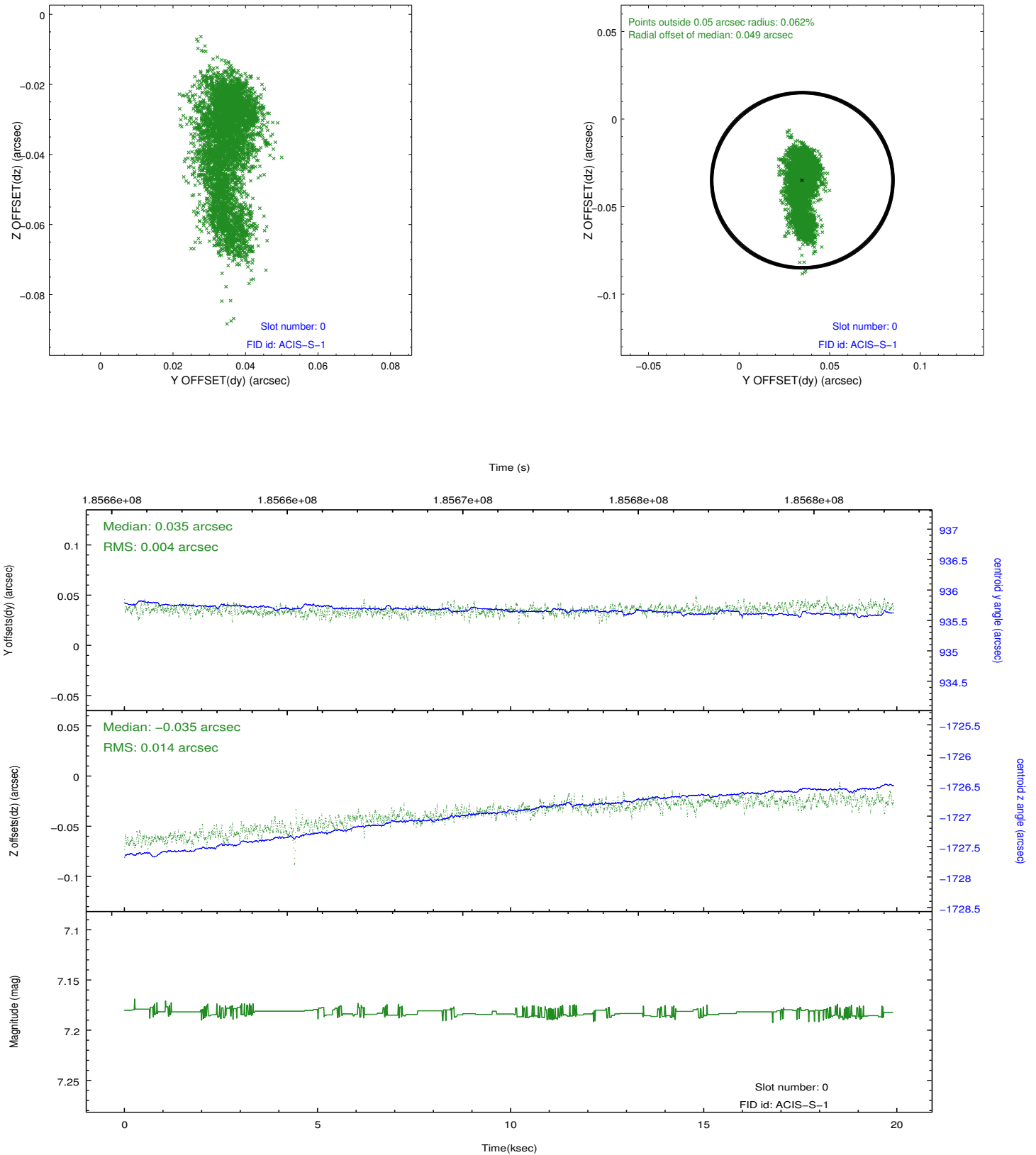


2.4.5 Slot 7

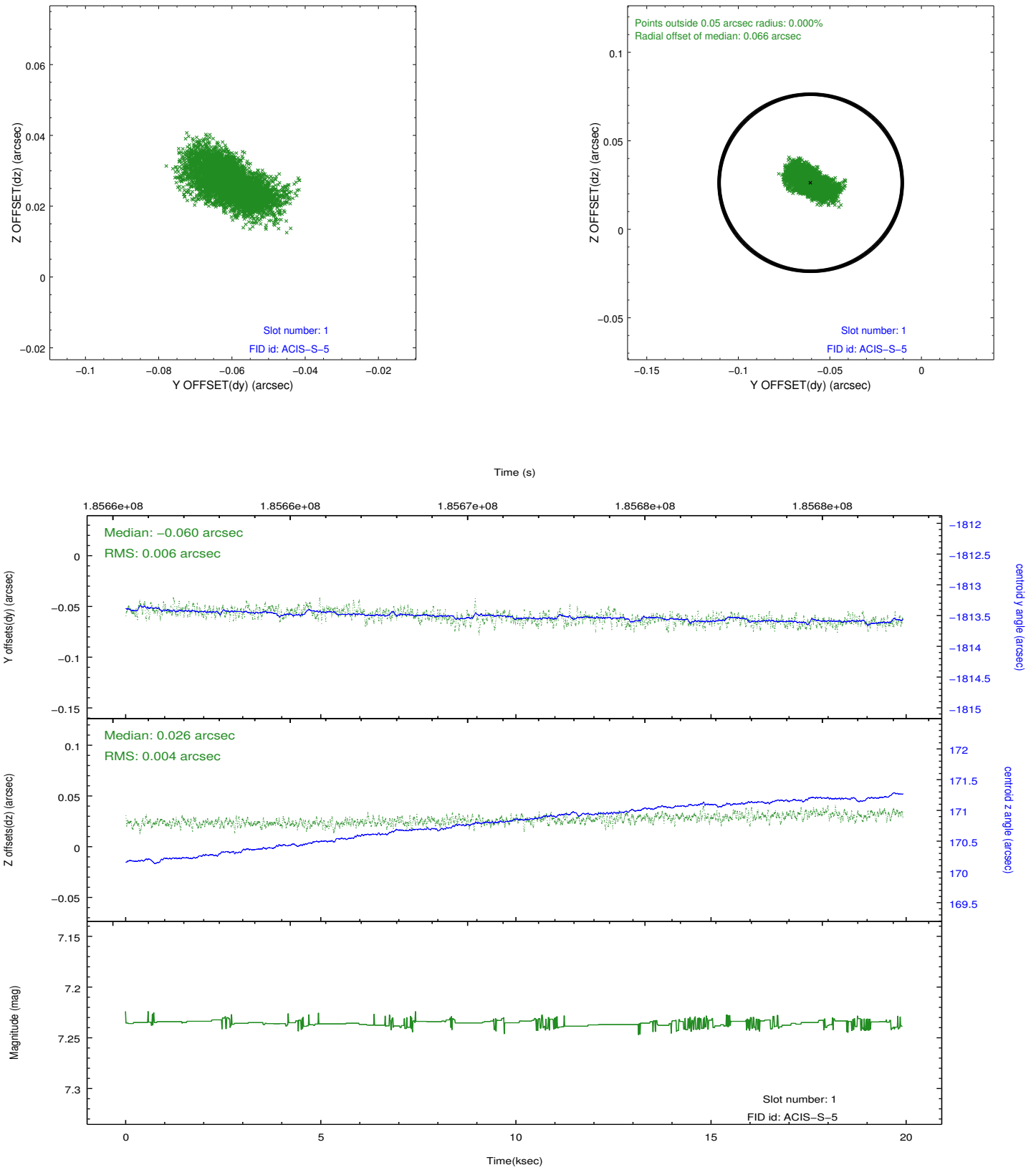


2.5 FID Slots

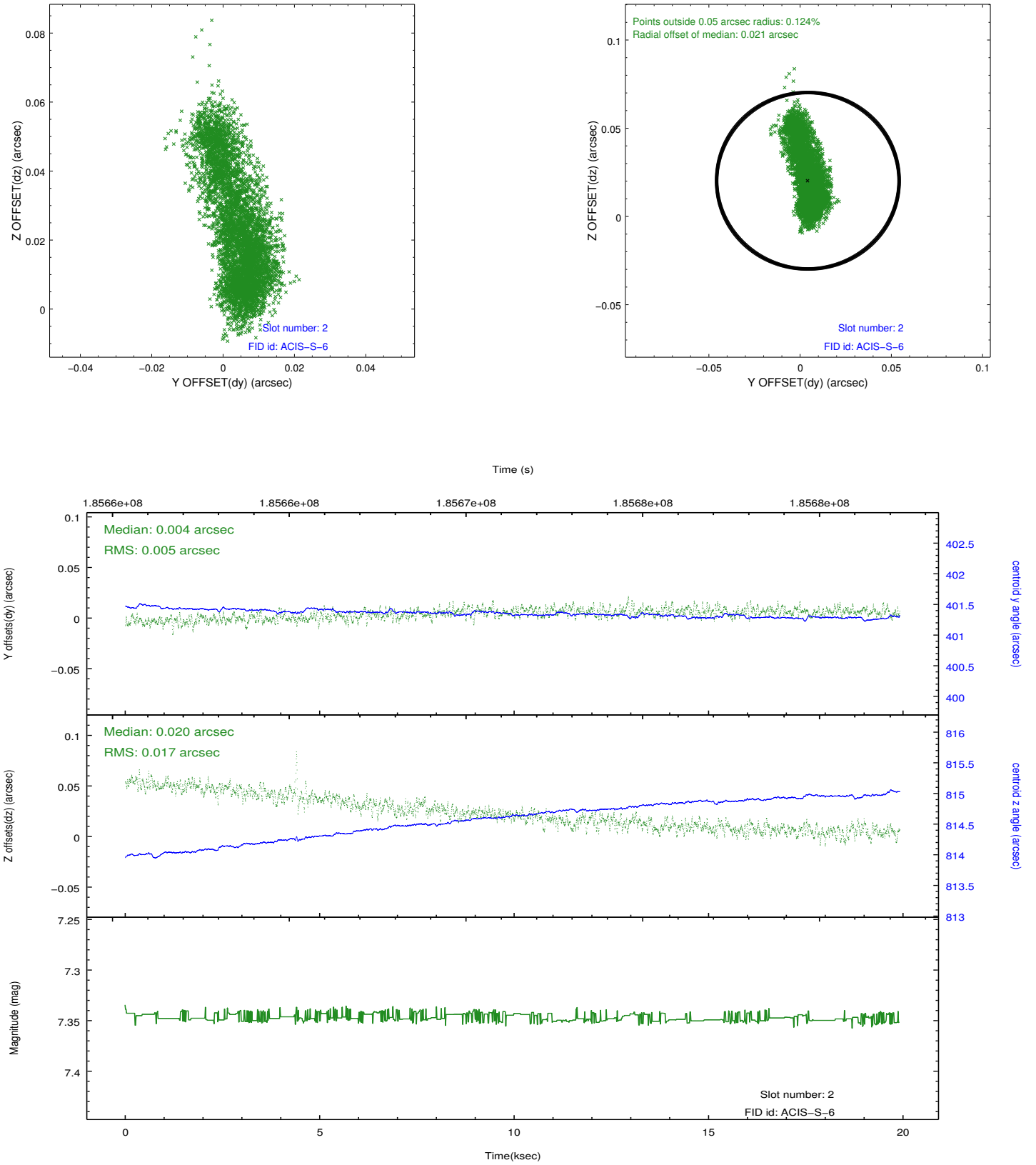
2.5.1 Slot 0



2.5.2 Slot 1



2.5.3 Slot 2



A Summary

A.1 Status

V&V Scientist	Jen Lauer
V&V Date (YYYY-MM-DD)	2012.12.02
V&V Edition	1
V&V Disposition and Status	OK
V&V Charge Time	19.891

A.2 Comments

Roll constraint satisfied. Joint Proposal with HST.