

V&V Reference Report

L2 ASCDS Version : 7.6.8.1

Observation 4066 - L2 Version 001
Chandra X-Ray Center

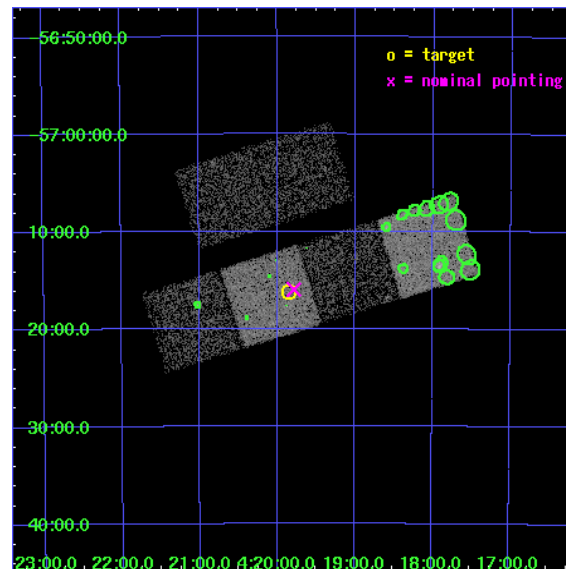
L2 Processing Date : Aug 6 2006

Contents

1	Front	2
2	OBI	3
2.1	OBI	3
2.1.1	Images	3
2.1.2	Bias	3
2.1.3	Parameters	4
2.1.4	Events	4
2.2	Compared Parameters	5
2.3	Aspect	6
2.4	Star Slots	9
2.4.1	Slot 3	9
2.4.2	Slot 4	10
2.4.3	Slot 5	11
2.4.4	Slot 6	12
2.4.5	Slot 7	13
2.5	FID Slots	14
2.5.1	Slot 0	14
2.5.2	Slot 1	15
2.5.3	Slot 2	16
3	Point Sources	17
A	Summary	18
A.1	Status	18
A.2	Comments	18

1 Front

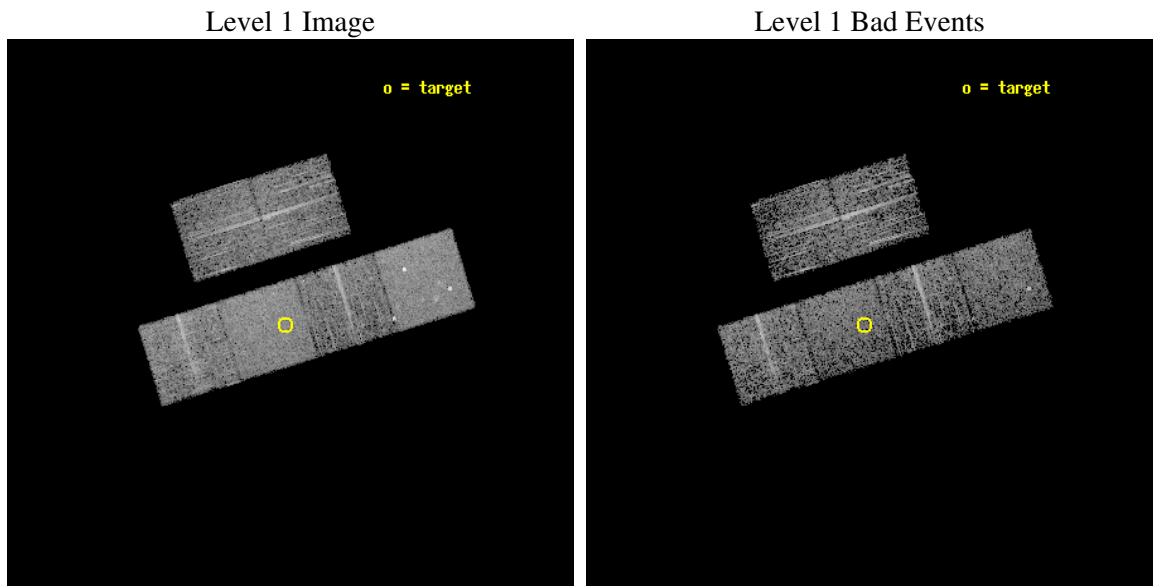
seq_num	700745
obs_id	4066
title	A CHANDRA SURVEY OF THE MOST LUMINOUS QUASARS AT $Z > 4$
observer	Dr. Cristian Vignali
object	BR 0418-5723
dtcycle	0
cycle	P
ra_targ	64.962083
dec_targ	-57.270306
ra_nom	64.946150208309
dec_nom	-57.265851578001
roll_nom	162.70759966911
revision	2
ontime	4038.3999849558
livetime	3987.2633327137
ontime2	4035.1589947641
ontime3	4038.3999849558
ontime5	4038.3999849558
ontime6	4038.3999849558
ontime7	4038.3999849558
ontime8	4038.3999849558
l2events	40521



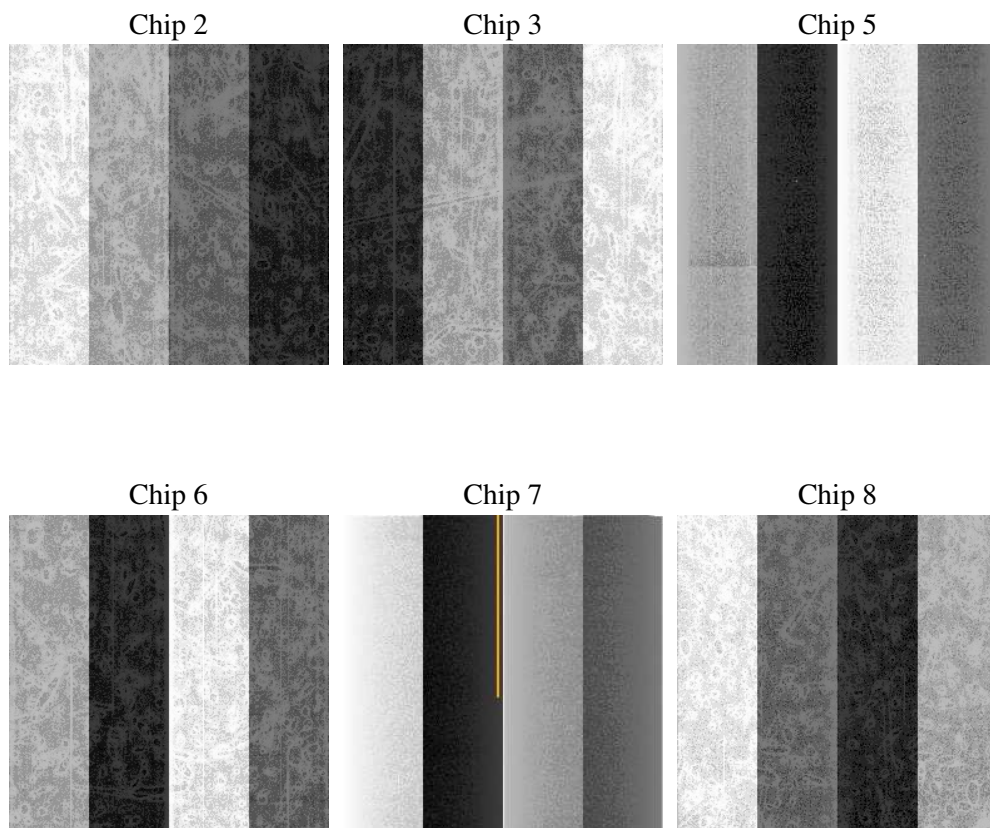
2 OBI

2.1 OBI

2.1.1 Images



2.1.2 Bias



2.1.3 Parameters

obi_num	0
ascdsver	7.6.8.1
caldsver	3.2.2
date	2006-08-07T01:07:29
revision	2

sched_exp_time	4000.000000
ontime	4041.5270719528
ontime2	4038.2860817611
ontime3	4041.5270719528
ontime5	4041.5270719528
ontime6	4041.5270719528
ontime7	4041.5270719528
ontime8	4041.5270719528
l1events	183105

2.1.4 Events

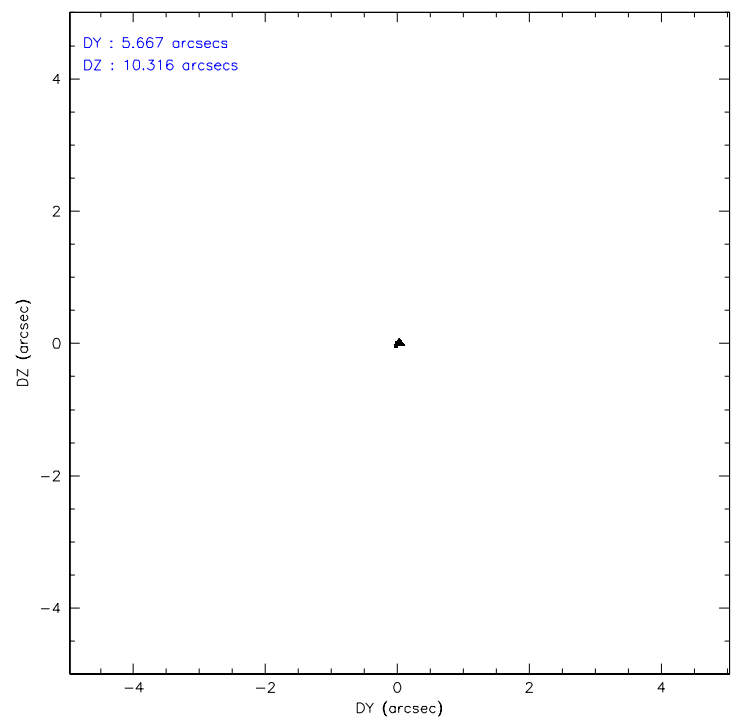
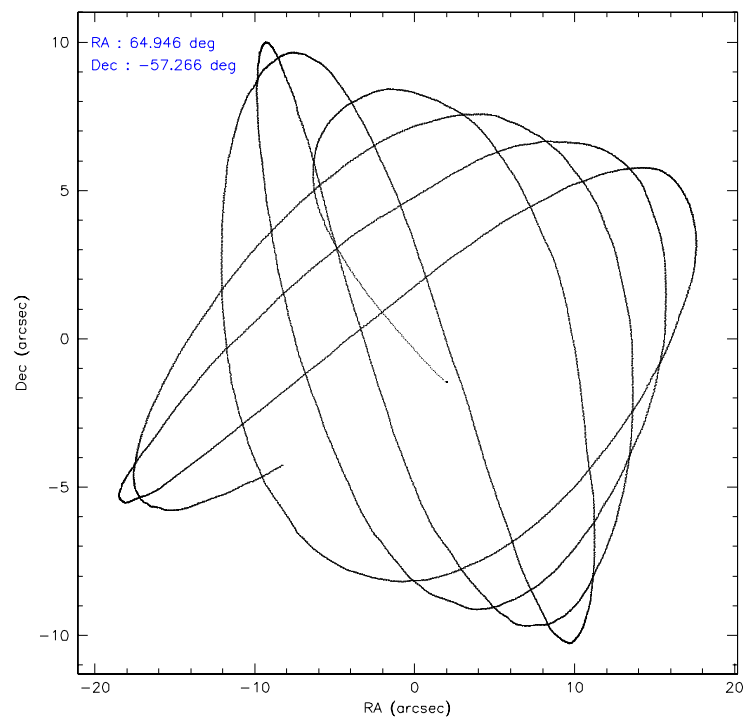
	ccd 2	ccd 3	ccd 5	ccd 6	ccd 7	ccd 8
level 1 events	27124	24711	38660	25719	34634	32257
rejected events	24082	21710	20695	22470	21114	25066
rejected %	88%	87%	53%	87%	60%	77%

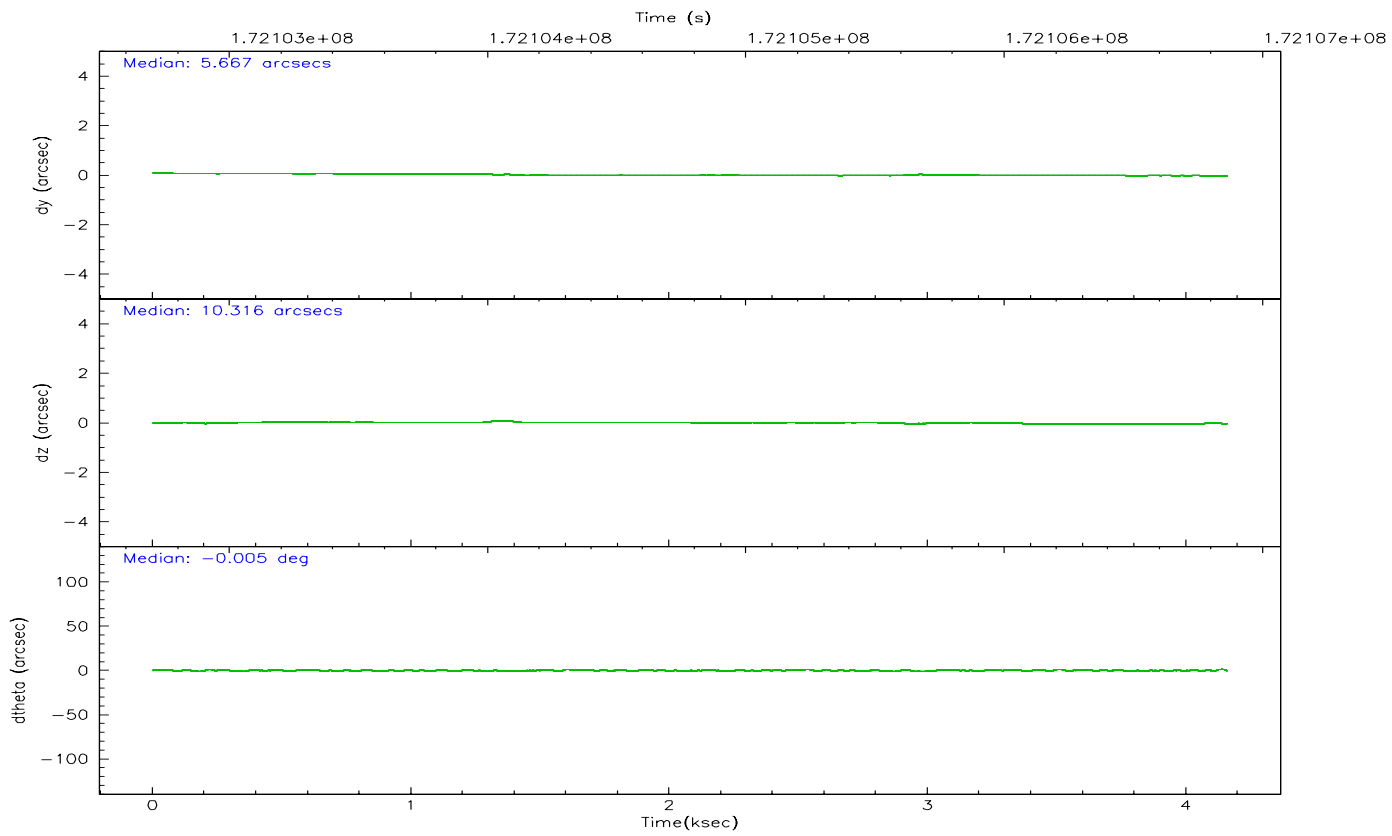
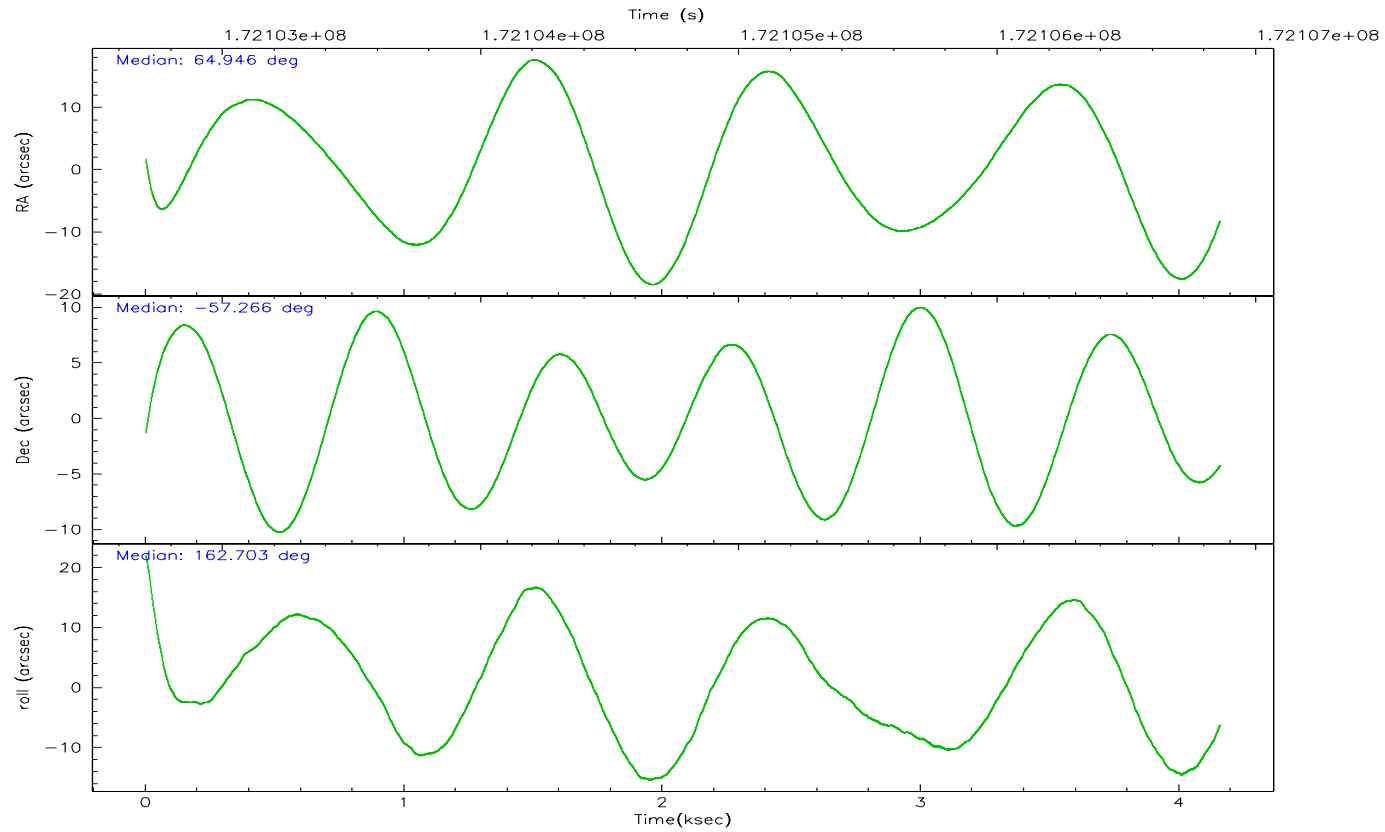
	ccd 2	ccd 3	ccd 5	ccd 6	ccd 7	ccd 8
grade 0 events	1380	1305	2067	1434	913	2320
	5%	5%	5%	5%	2%	7%
grade 1 events	13	12	86	13	13	23
	0%	0%	0%	0%	0%	0%
grade 2 events	588	585	5324	640	3303	1579
	2%	2%	13%	2%	9%	4%
grade 3 events	286	286	559	286	687	750
	1%	1%	1%	1%	1%	2%
grade 4 events	302	308	467	284	725	703
	1%	1%	1%	1%	2%	2%
grade 5 events	1006	1128	1963	1163	2256	1521
	3%	4%	5%	4%	6%	4%
grade 6 events	491	522	9565	608	7900	1839
	1%	2%	24%	2%	22%	5%
grade 7 events	23058	20565	18629	21291	18837	23522
	85%	83%	48%	82%	54%	72%

2.2 Compared Parameters

Parameter	Planned	Actual	Parameter	Planned	Actual
Instrument	ACIS	ACIS	Obspar format version number	6	6
Detector	ACIS-235678	ACIS-235678	Obspar file type	PREDICTED	ACTUAL
Grating	NONE	NONE	Obspar update status	NONE	UPDATED
Data mode	FAINT	FAINT	On-chip summing requested	N	N
Observation mode	POINTING	POINTING	Subarray requested	NONE	NONE
Pointing RA	64.995157	64.94615020830855	Alternating exposures requested	N	N
Pointing Dec	-57.259509	-57.26585157800073	Primary exposure time	0.000000	3.2
Pointing Roll	162.592160	162.7075996691108			
SIM focus pos (mm)	-0.684267	-0.6828225247311905			
SIM defocus (mm)	0	0.001444936568705701			
SIM translation stage pos (mm)	-190.132523	-190.1425803651734			
SIM translation stage offset (mm)	0	0.01005778216563158			
Observation start time	172102864.184000	172101865.73399			
Observation start date	2003-06-15T22:20:00	2003-06-15T22:04:25			
Observation end time	172106864.184000	172107609.32174			
Observation end date	2003-06-15T23:26:40	2003-06-15T23:40:09			
Read mode	TIMED	TIMED			

2.3 Aspect



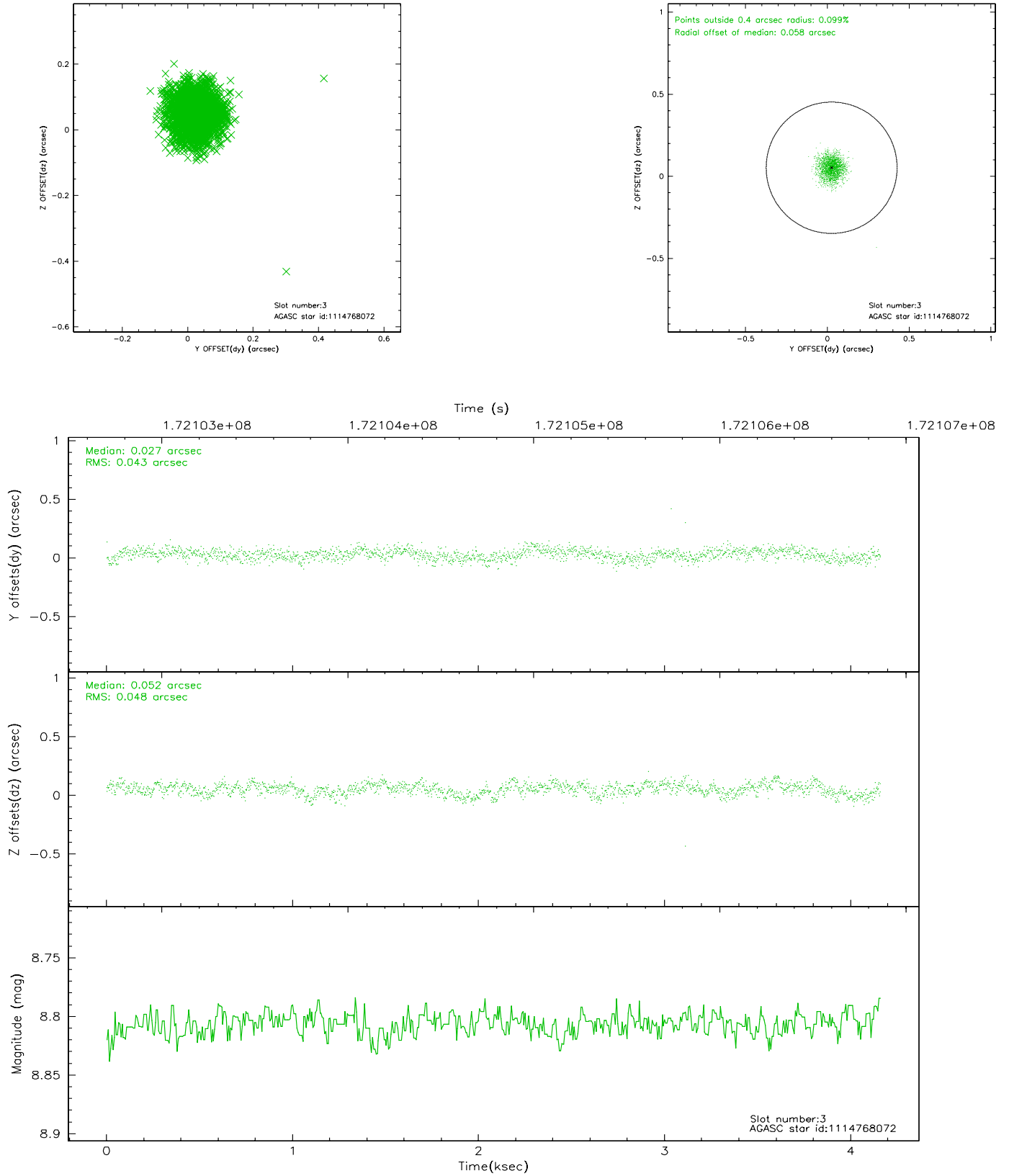


Slot Statistics

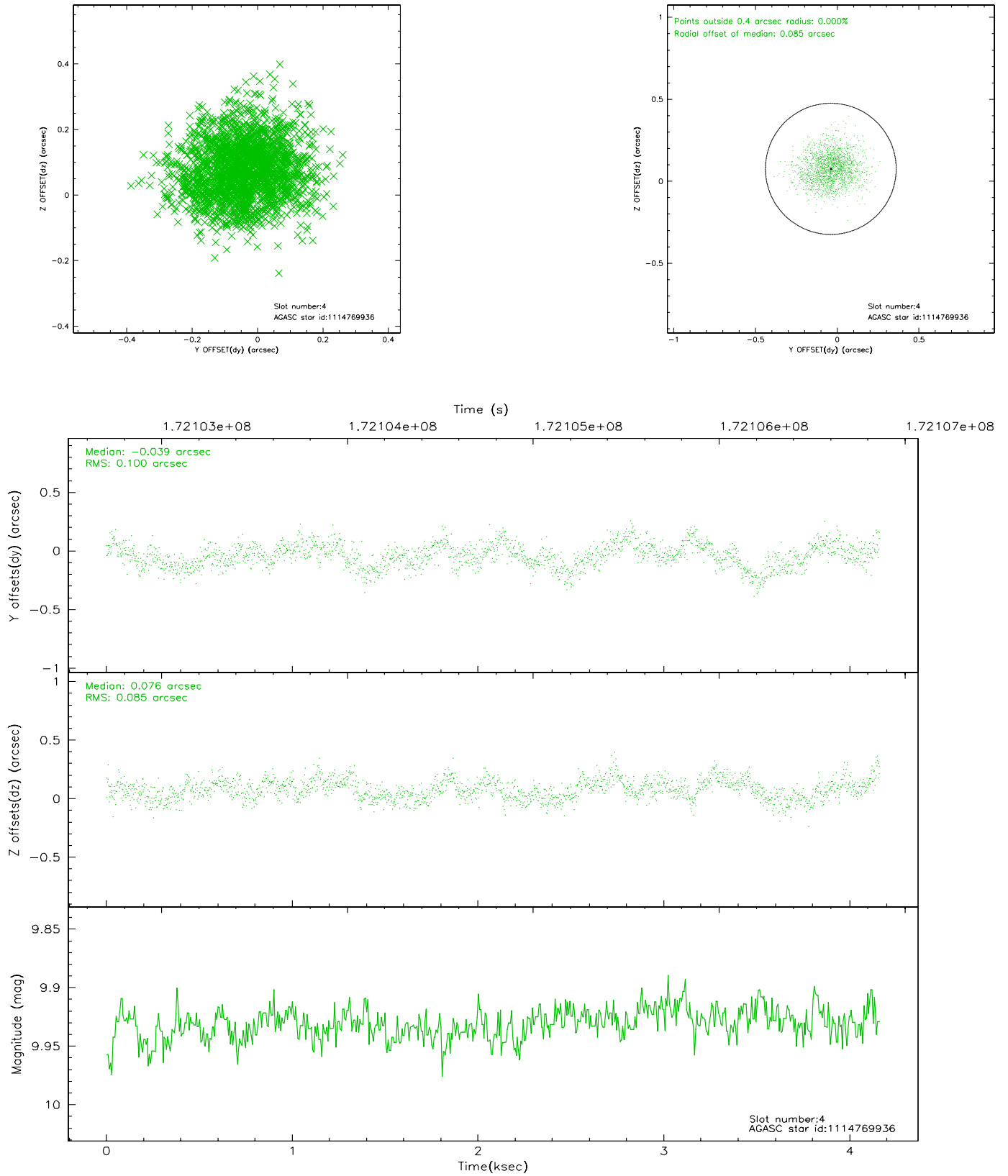
slot	status	id	mag	n_pts	med_dy	med_dz	dr1	dr2	ra	dec	mean_y	mean_z
0	FID	ACIS-S-2	7.10	1015	-0.049	0.017	0.006	0.010	0.000000	0.000000	-758.42	-1731.51
1	FID	ACIS-S-4	7.20	1015	0.021	0.019	0.005	0.009	0.000000	0.000000	2154.22	175.47
2	FID	ACIS-S-5	7.23	1015	-0.003	-0.028	0.006	0.011	0.000000	0.000000	-1809.32	170.74
3	GUIDE	1114768072	8.81	2028	0.027	0.052	0.068	0.107	64.525397	-56.997106	1160.83	-622.37
4	GUIDE	1114769936	9.93	2029	-0.039	0.076	0.141	0.230	64.303941	-57.054553	1510.74	-292.56
5	GUIDE	1114770112	7.94	2030	0.016	0.039	0.066	0.107	66.028764	-57.253162	-1917.33	-609.41
6	GUIDE	1114771808	9.82	2029	0.022	0.059	0.102	0.170	65.495504	-57.178479	-846.13	-567.05
7	GUIDE	1115163520	9.45	2028	-0.019	-0.221	0.124	0.191	64.336336	-57.819703	599.73	2307.96

2.4 Star Slots

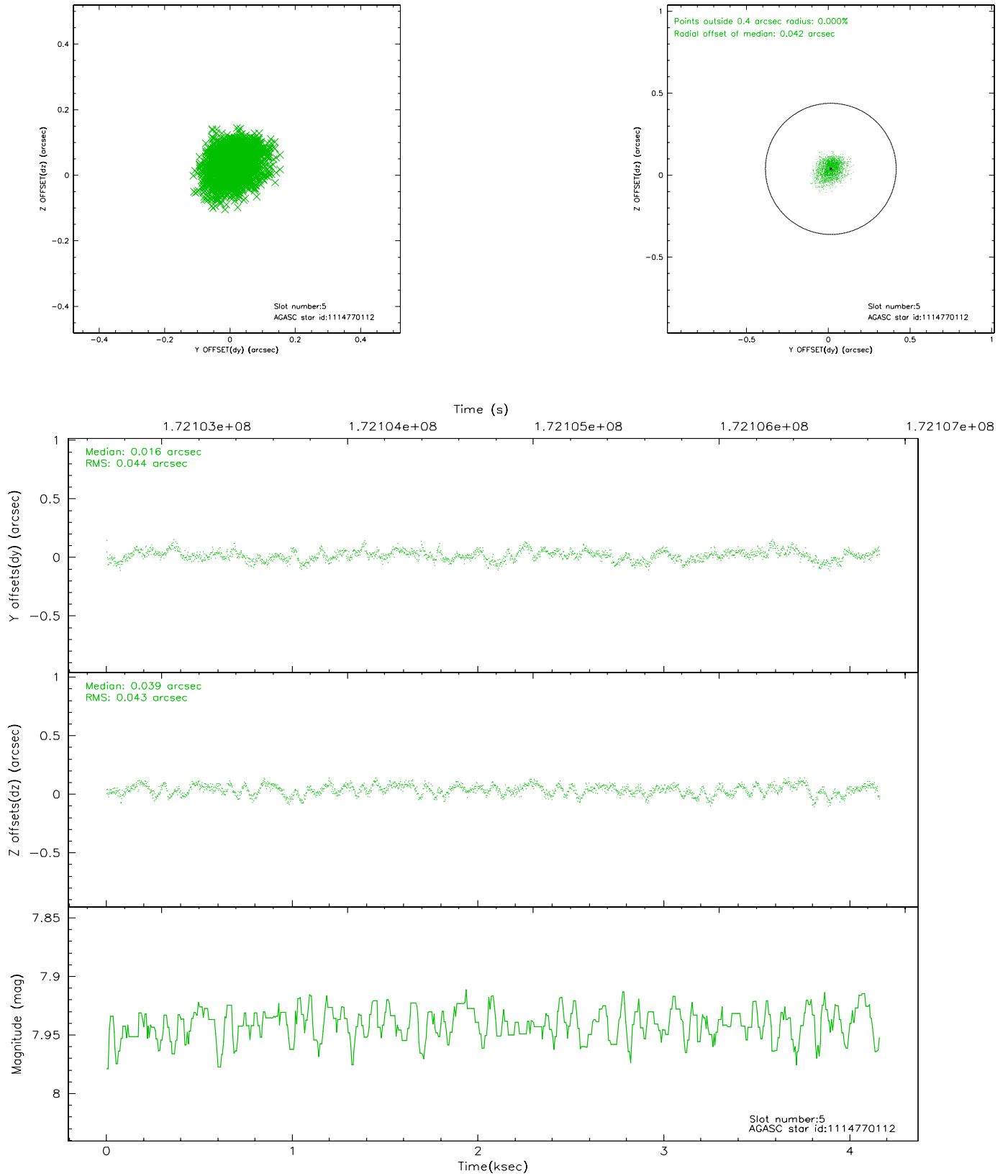
2.4.1 Slot 3



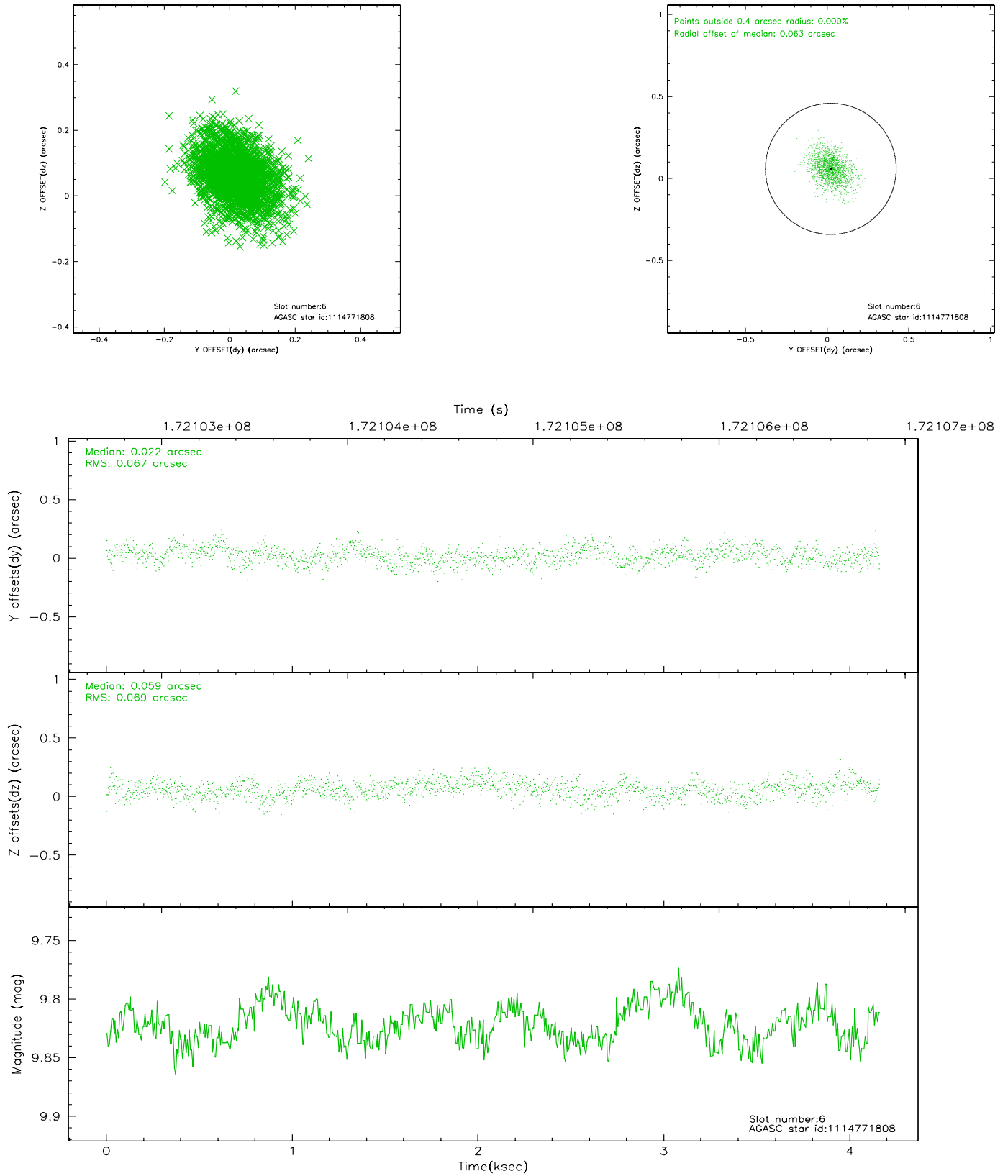
2.4.2 Slot 4



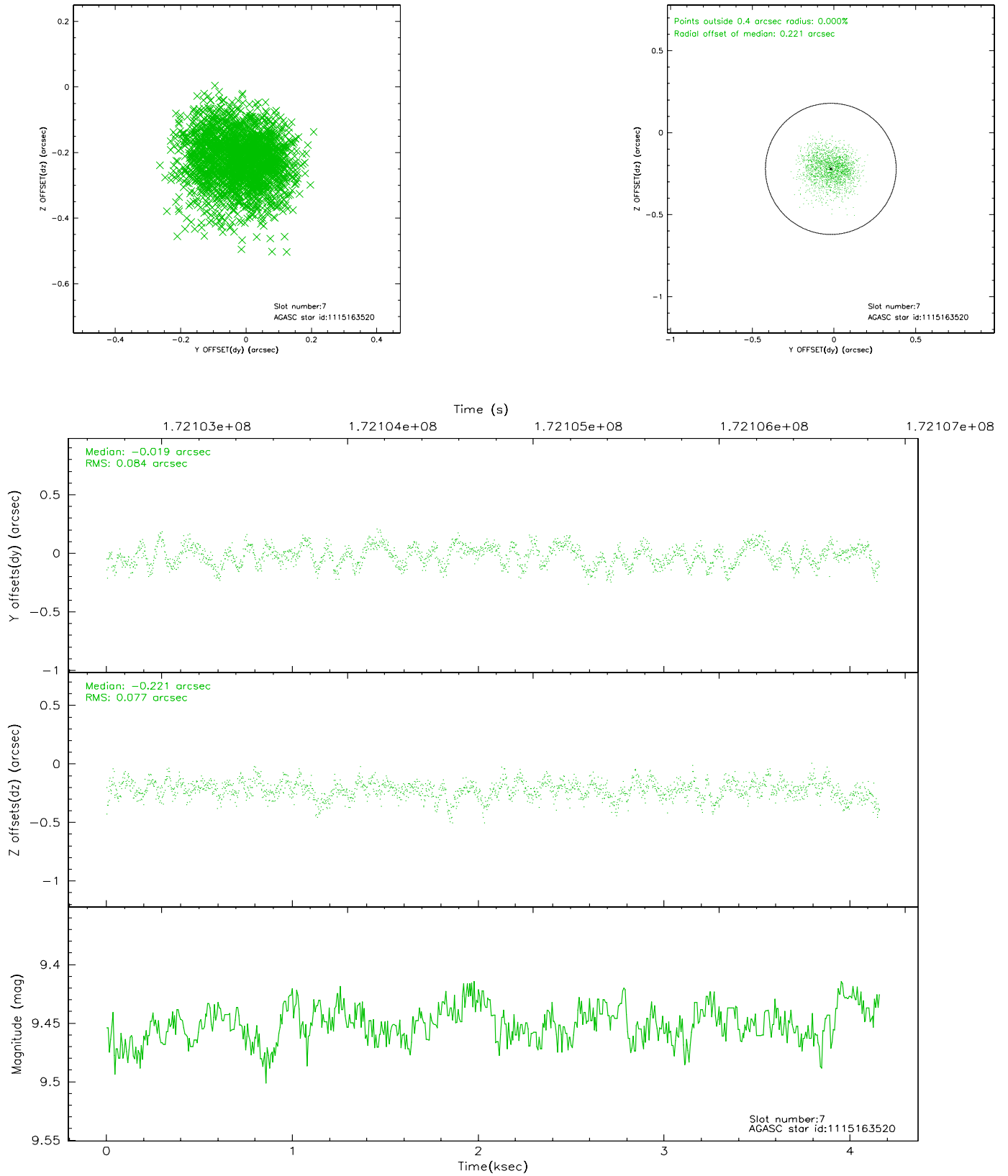
2.4.3 Slot 5



2.4.4 Slot 6

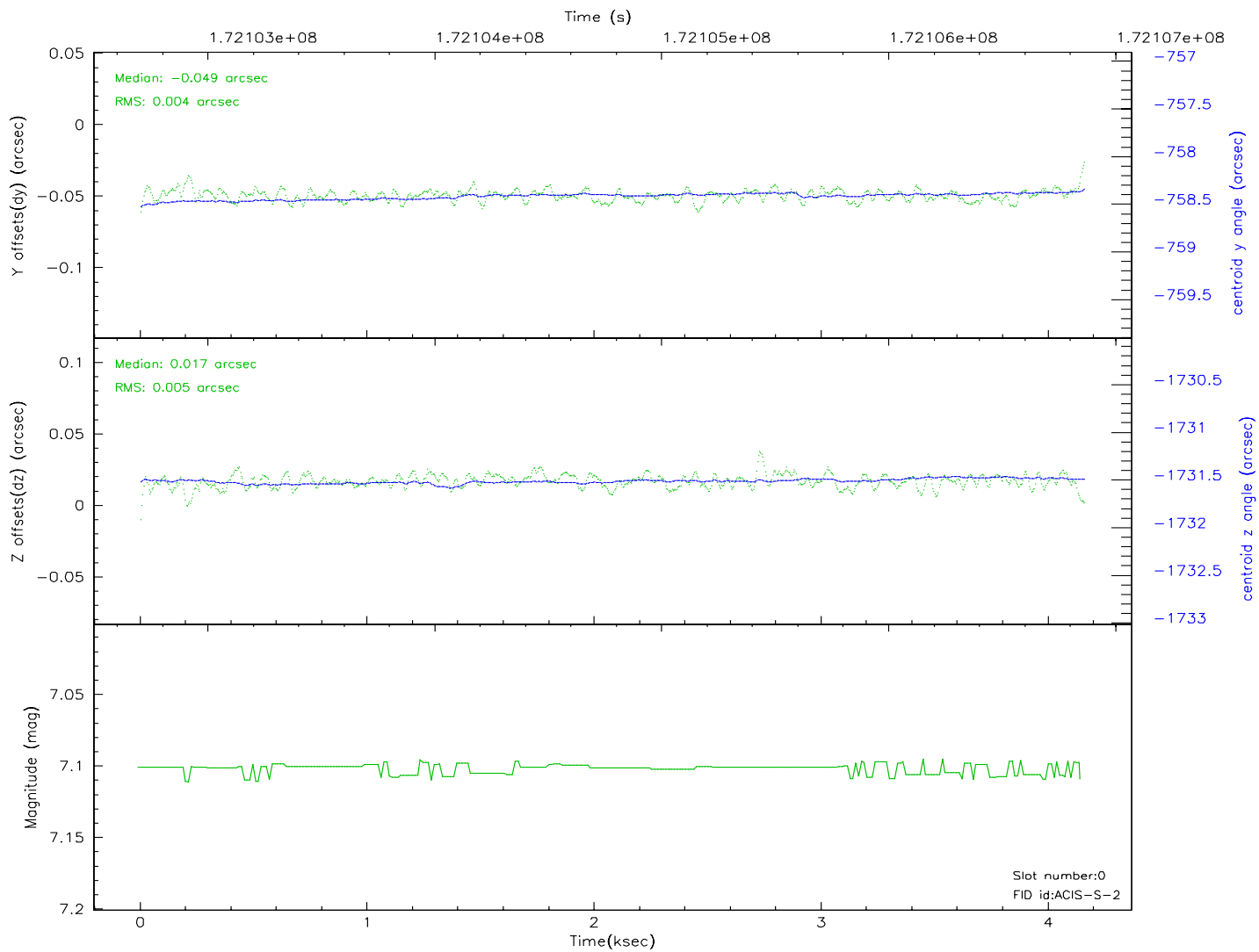
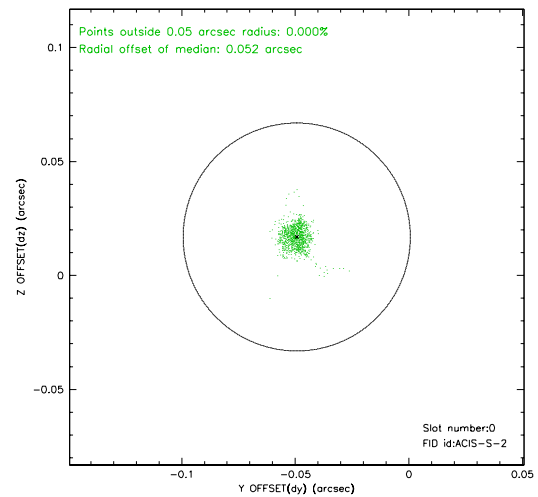
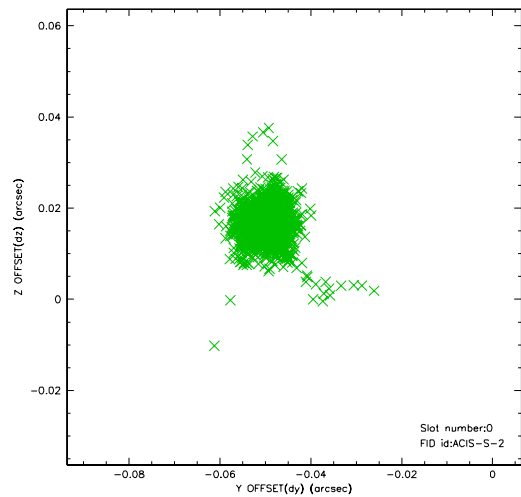


2.4.5 Slot 7

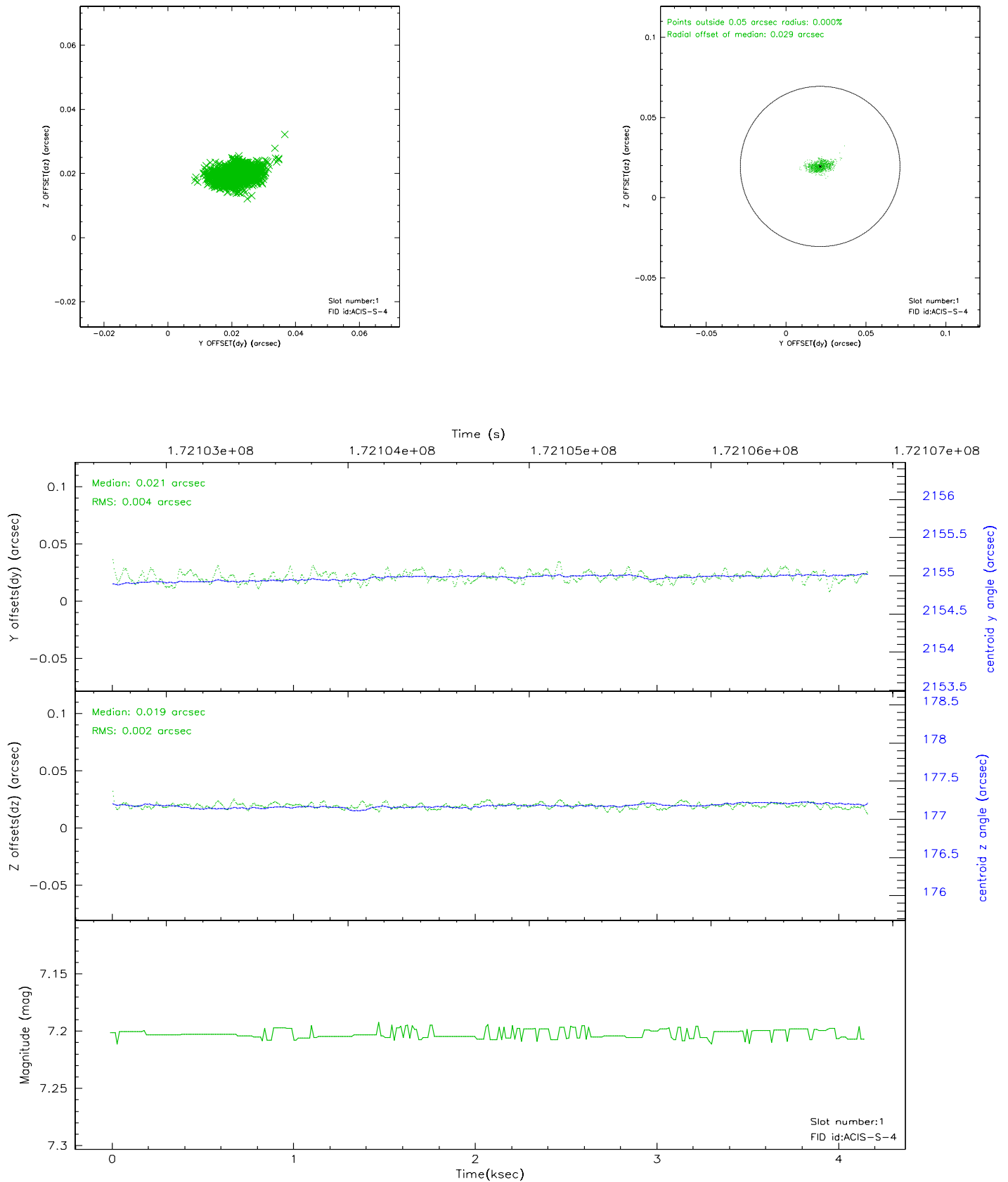


2.5 FID Slots

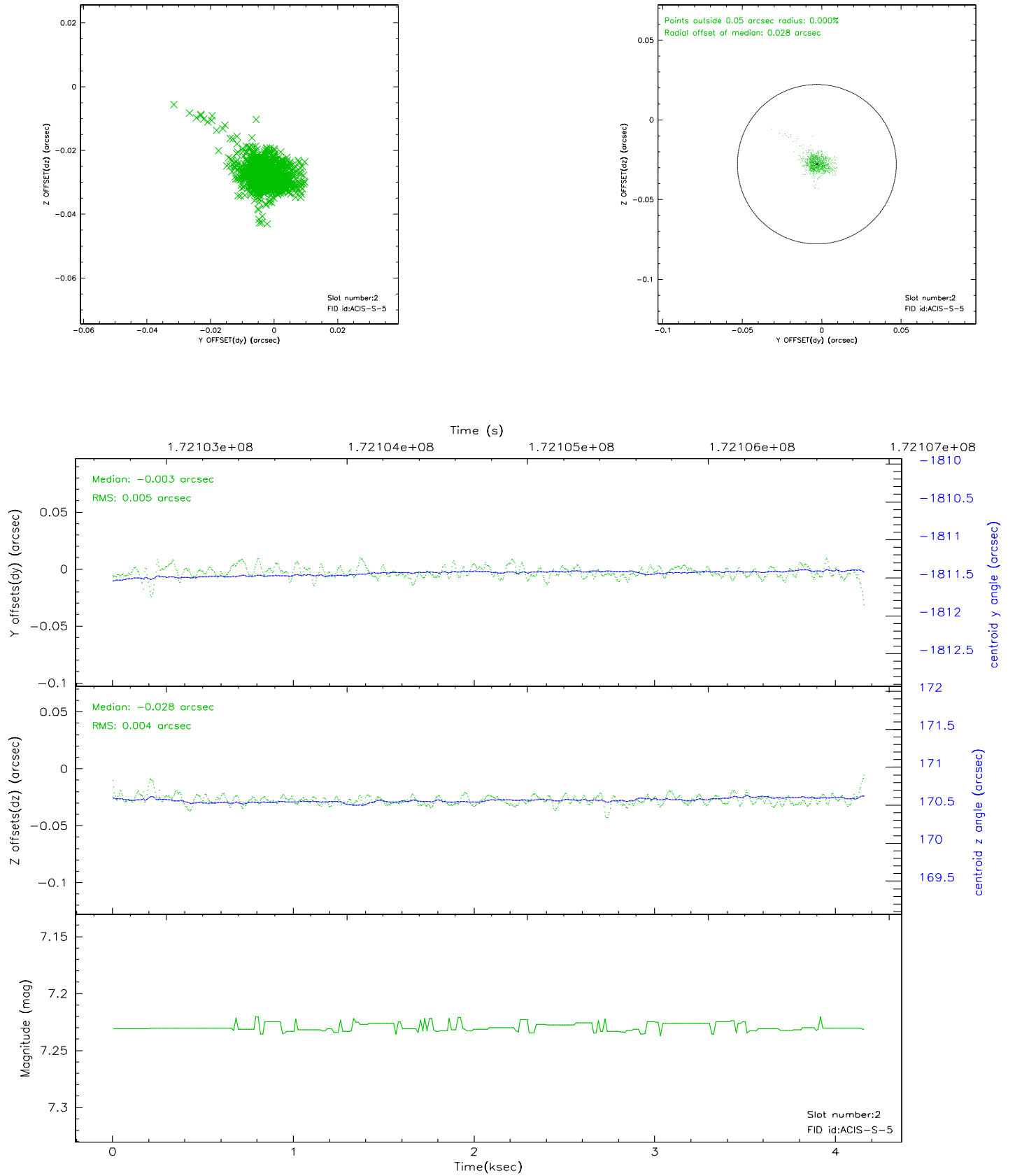
2.5.1 Slot 0



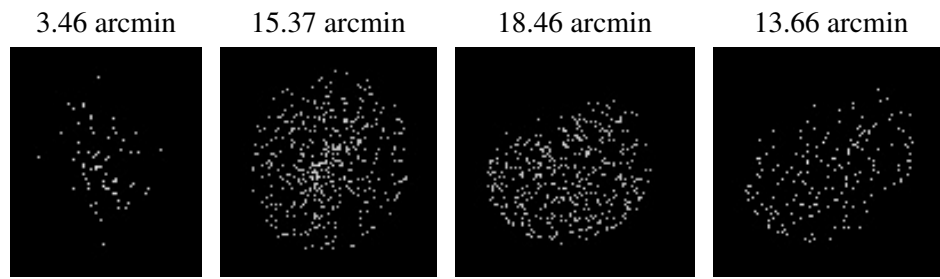
2.5.2 Slot 1



2.5.3 Slot 2



3 Point Sources



A Summary

A.1 Status

V&V Scientist	Beth Sundheim
V&V Date (YYYY-MM-DD)	2006.08.07
V&V Edition	1
V&V Disposition and Status	OK
V&V Charge Time	4.038

A.2 Comments