

V&V Reference Report

L2 ASCDS Version : 7.6.8

Observation 3956 - L2 Version 001
Chandra X-Ray Center

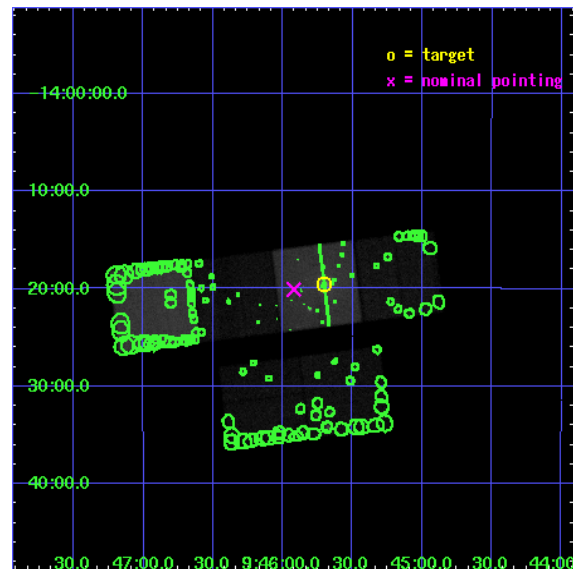
L2 Processing Date : Jul 27 2006

Contents

1	Front	2
2	OBI	3
2.1	OBI	3
2.1.1	Images	3
2.1.2	Bias	3
2.1.3	Parameters	4
2.1.4	Events	4
2.2	Compared Parameters	5
2.3	Aspect	6
2.4	Star Slots	9
2.4.1	Slot 3	9
2.4.2	Slot 4	10
2.4.3	Slot 5	11
2.4.4	Slot 6	12
2.4.5	Slot 7	13
2.5	FID Slots	14
2.5.1	Slot 0	14
2.5.2	Slot 1	15
2.5.3	Slot 2	16
3	Point Sources	17
A	Summary	18
A.1	Status	18
A.2	Comments	18

1 Front

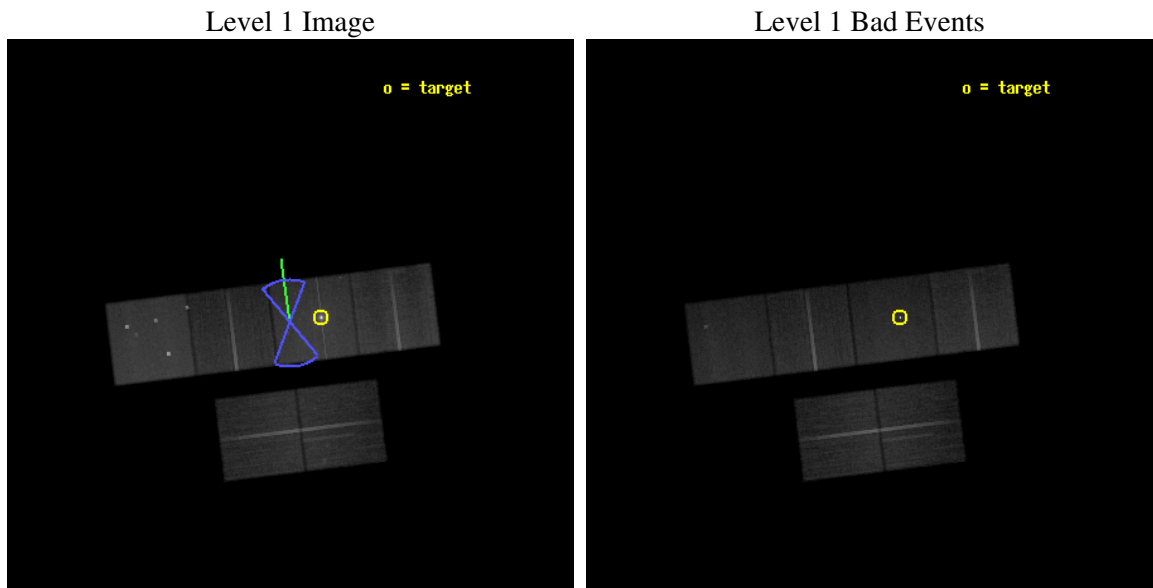
seq_num	700635
obs_id	3956
title	THE LARGE-SCALE GALACTIC OUTFLOW IN THE SEYFERT GALAXY NGC 2992
observer	Dr. Edward Colbert
object	NGC2992
dtcycle	0
cycle	P
ra_targ	146.425
dec_targ	-14.326389
ra_nom	146.48008272818
dec_nom	-14.334817463208
roll_nom	352.95240505276
revision	2
ontime	50179.199813068
livetime	49543.800570748
ontime2	50175.95883283
ontime3	50179.199813068
ontime5	50179.199813068
ontime6	50179.199813068
ontime7	50179.199813068
ontime8	50179.199813068
l2events	567157



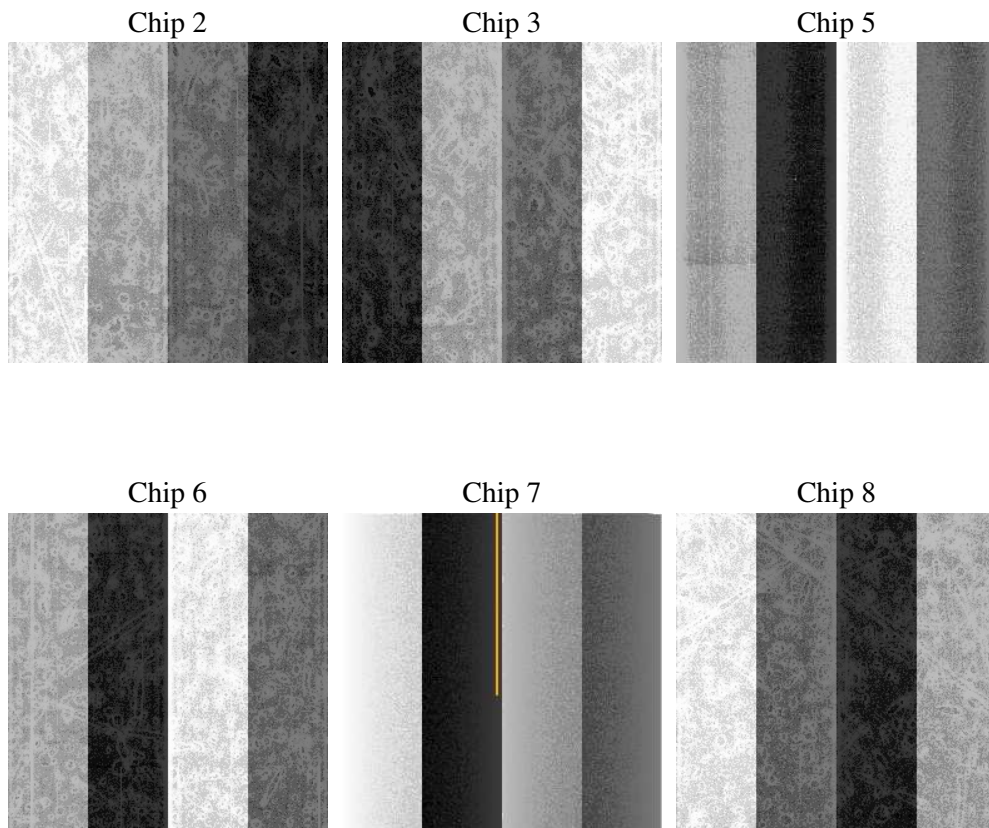
2 OBI

2.1 OBI

2.1.1 Images



2.1.2 Bias



2.1.3 Parameters

obi_num	0
ascdsver	7.6.8
caldsver	3.2.2
date	2006-07-27T17:20:48
revision	2

sched_exp_time	50000.000000
ontime	50874.129608214
ontime2	50870.888627976
ontime3	50874.129608214
ontime5	50874.129608214
ontime6	50874.129608214
ontime7	50874.129608214
ontime8	50874.129608214
l1events	2376713

2.1.4 Events

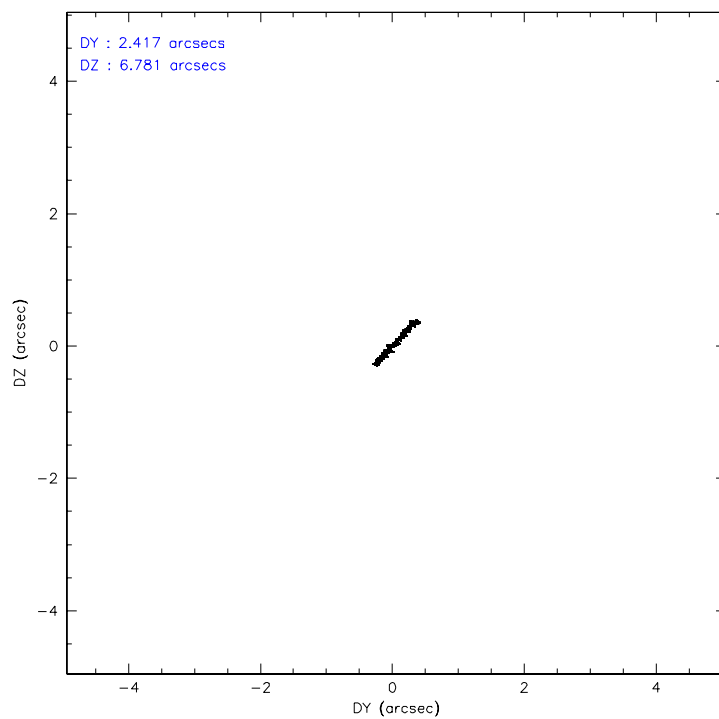
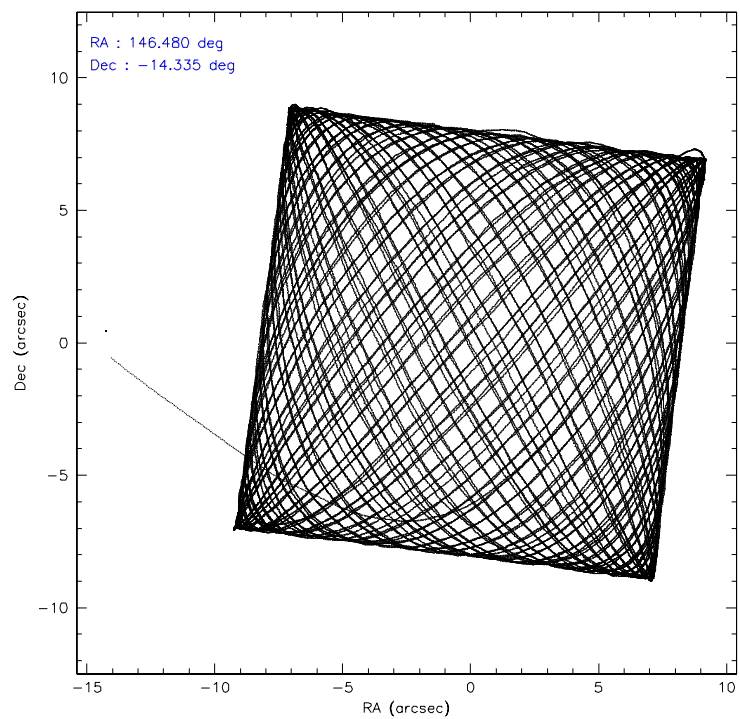
	ccd 2	ccd 3	ccd 5	ccd 6	ccd 7	ccd 8
level 1 events	329098	309968	489082	327780	512968	407817
rejected events	289173	269513	265122	286590	283647	320602
rejected %	87%	86%	54%	87%	55%	78%

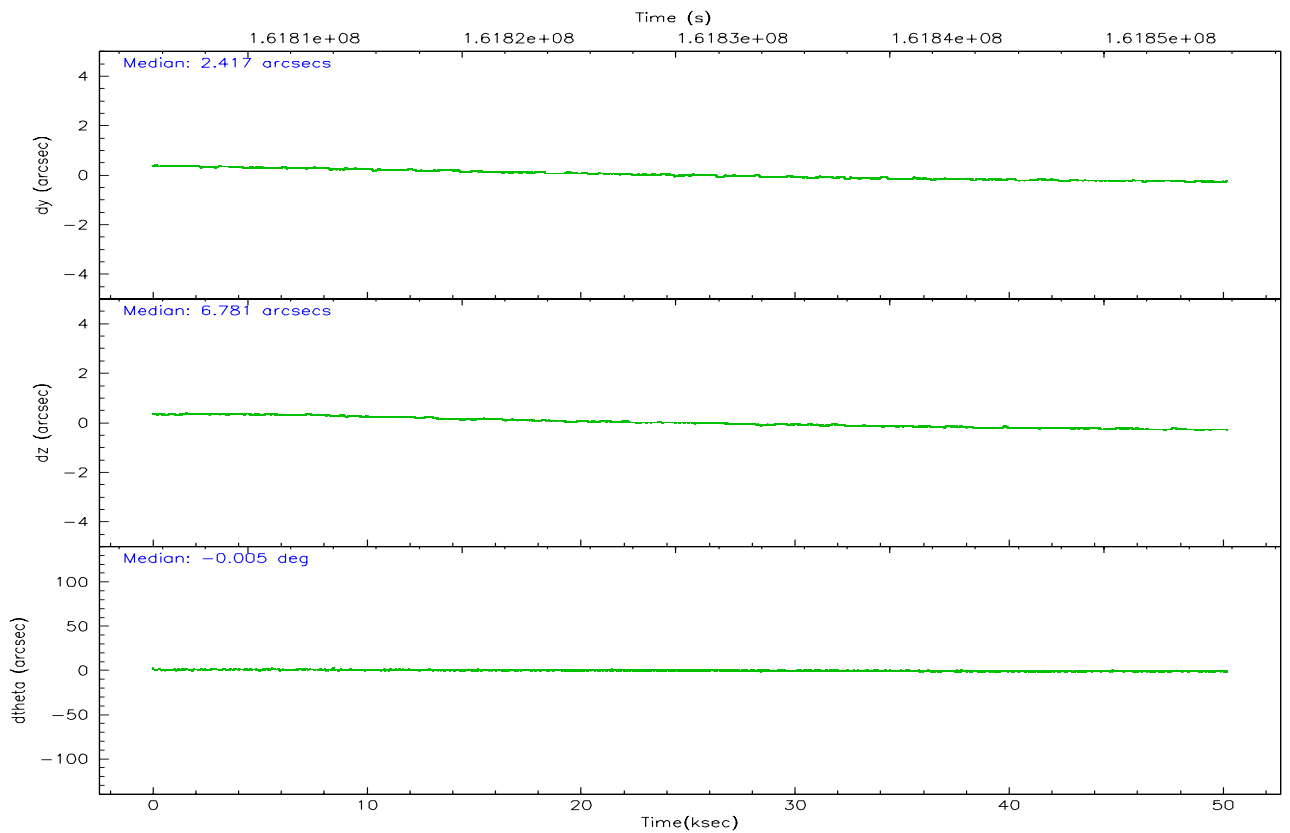
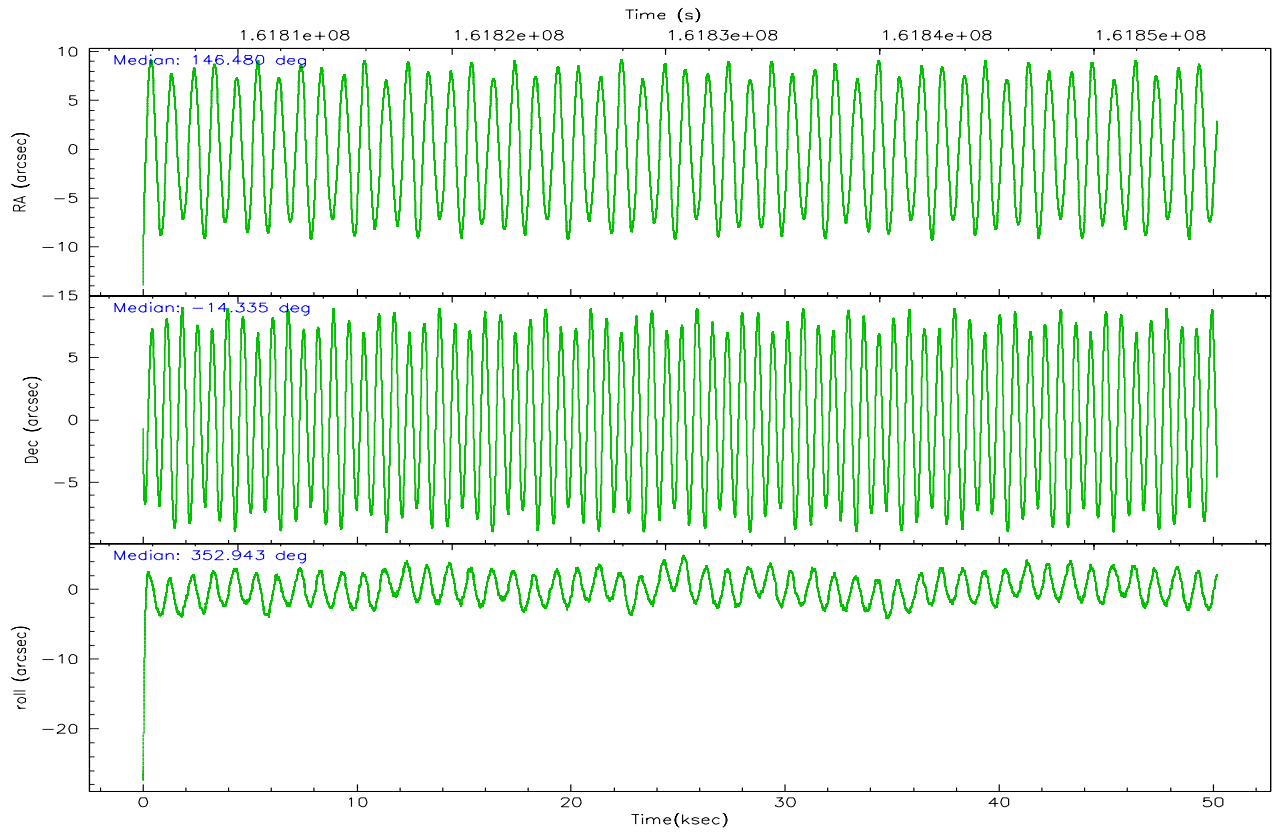
	ccd 2	ccd 3	ccd 5	ccd 6	ccd 7	ccd 8
grade 0 events	18403	19409	34514	18053	23052	29942
	5%	6%	7%	5%	4%	7%
grade 1 events	204	178	1312	175	1008	290
	0%	0%	0%	0%	0%	0%
grade 2 events	7909	7311	64387	8321	59058	18781
	2%	2%	13%	2%	11%	4%
grade 3 events	3752	3814	4815	3941	14867	9200
	1%	1%	0%	1%	2%	2%
grade 4 events	3784	3888	4498	3854	14563	8573
	1%	1%	0%	1%	2%	2%
grade 5 events	12358	13367	22706	14686	32229	18809
	3%	4%	4%	4%	6%	4%
grade 6 events	6551	6512	119105	7817	120236	22054
	1%	2%	24%	2%	23%	5%
grade 7 events	276137	255489	237745	270933	247955	300168
	83%	82%	48%	82%	48%	73%

2.2 Compared Parameters

Parameter	Planned	Actual	Parameter	Planned	Actual
Instrument	ACIS	ACIS	Obspar format version number	6	6
Detector	ACIS-235678	ACIS-235678	Obspar file type	PREDICTED	ACTUAL
Grating	NONE	NONE	Obspar update status	NONE	UPDATED
Data mode	FAINT	FAINT	On-chip summing requested	N	N
Observation mode	POINTING	POINTING	Subarray requested	NONE	NONE
Pointing RA	146.454374	146.4800827281819	Alternating exposures requested	N	N
Pointing Dec	-14.345784	-14.33481746320761	Primary exposure time	0.000000	3.2
Pointing Roll	352.789414	352.9524050527598			
Roll angle	350.000000	350.000000			
Roll tolerance	30.000000	30.000000			
Roll constraint allows 180D rotation	Y	Y			
SIM focus pos (mm)	-0.684267	-0.6828225247311905			
SIM defocus (mm)	0	0.001444936568705701			
SIM translation stage pos (mm)	-190.132523	-190.1400660498719			
SIM translation stage offset (mm)	0	0.00754346686406393			
Observation start time	161805754.184000	161804339.12399			
Observation start date	2003-02-16T18:01:30	2003-02-16T17:38:59			
Observation end time	161855754.184000	161856445.00118			
Observation end date	2003-02-17T07:54:50	2003-02-17T08:07:25			
Read mode	TIMED	TIMED			

2.3 Aspect



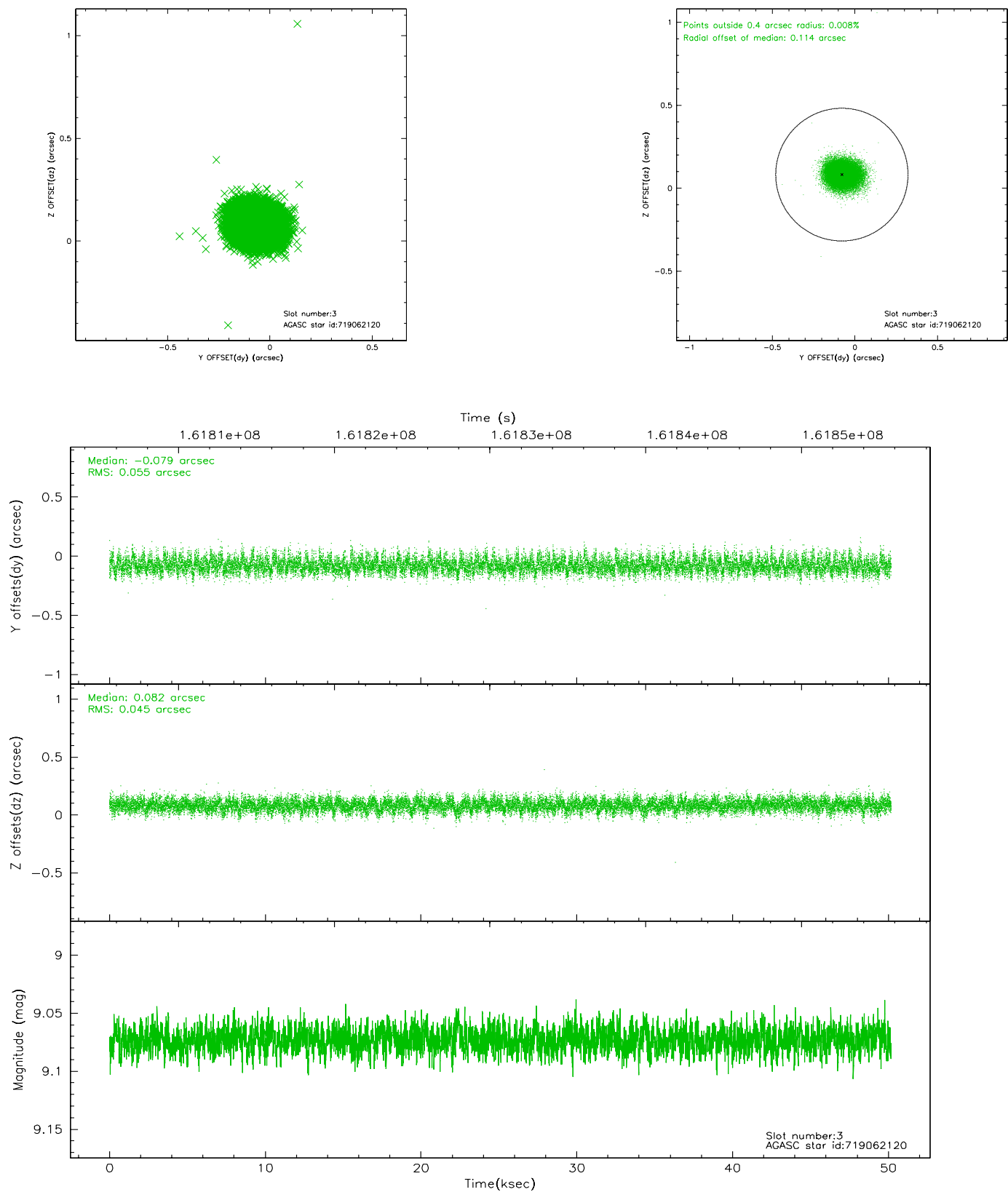


Slot Statistics

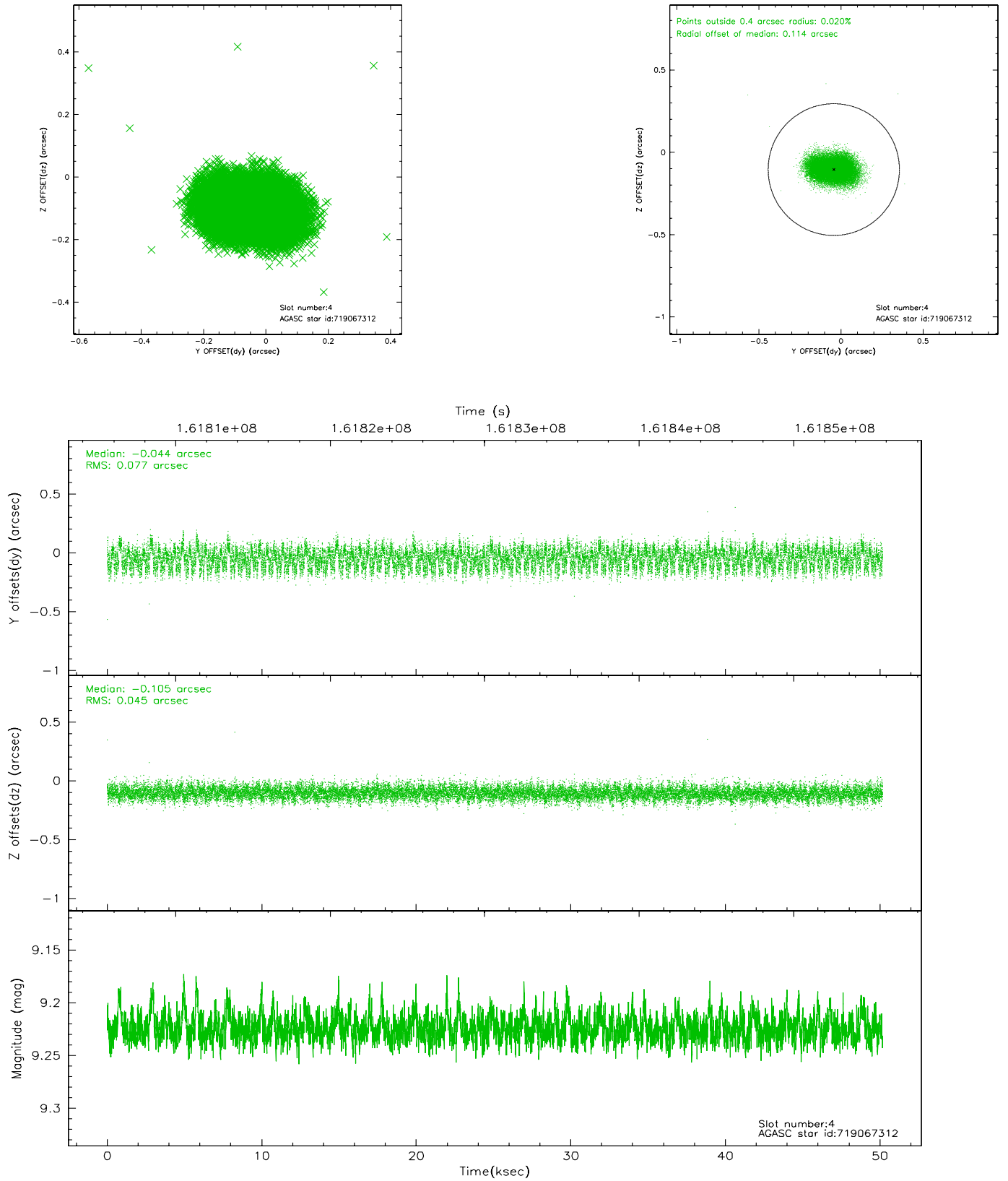
slot	status	id	mag	n_pts	med_dy	med_dz	dr1	dr2	ra	dec	mean_y	mean_z
0	FID	ACIS-S-2	7.12	12241	-0.026	0.023	0.011	0.016	0.000000	0.000000	-755.07	-1727.94
1	FID	ACIS-S-4	7.20	12240	-0.046	0.007	0.007	0.010	0.000000	0.000000	2158.18	180.57
2	FID	ACIS-S-5	7.24	12241	0.041	-0.020	0.013	0.021	0.000000	0.000000	-1807.89	174.15
3	GUIDE	719062120	9.07	24479	-0.079	0.082	0.076	0.123	146.850795	-14.914125	1625.64	-1857.33
4	GUIDE	719067312	9.22	24471	-0.044	-0.105	0.096	0.152	146.092771	-13.823259	-1490.11	1706.49
5	GUIDE	719072336	8.75	24475	0.128	0.003	0.078	0.130	146.032024	-14.033089	-1604.54	930.46
6	GUIDE	719068024	7.74	24415	0.012	0.021	0.066	0.106	145.876734	-13.695740	-2297.98	2065.56
7	GUIDE	719062168	8.70	24476	-0.020	-0.001	0.078	0.128	146.982073	-14.934546	2087.87	-1873.83

2.4 Star Slots

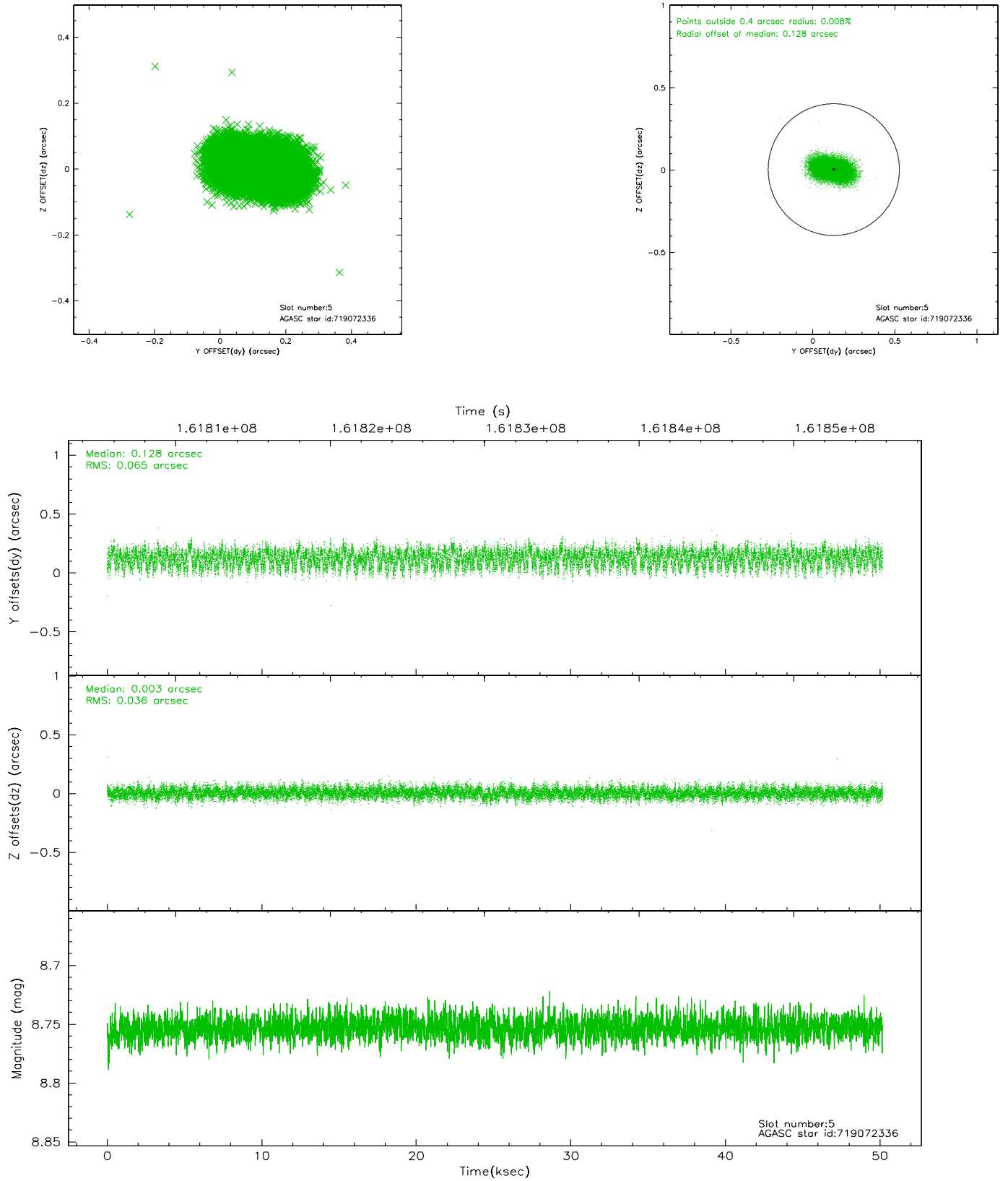
2.4.1 Slot 3



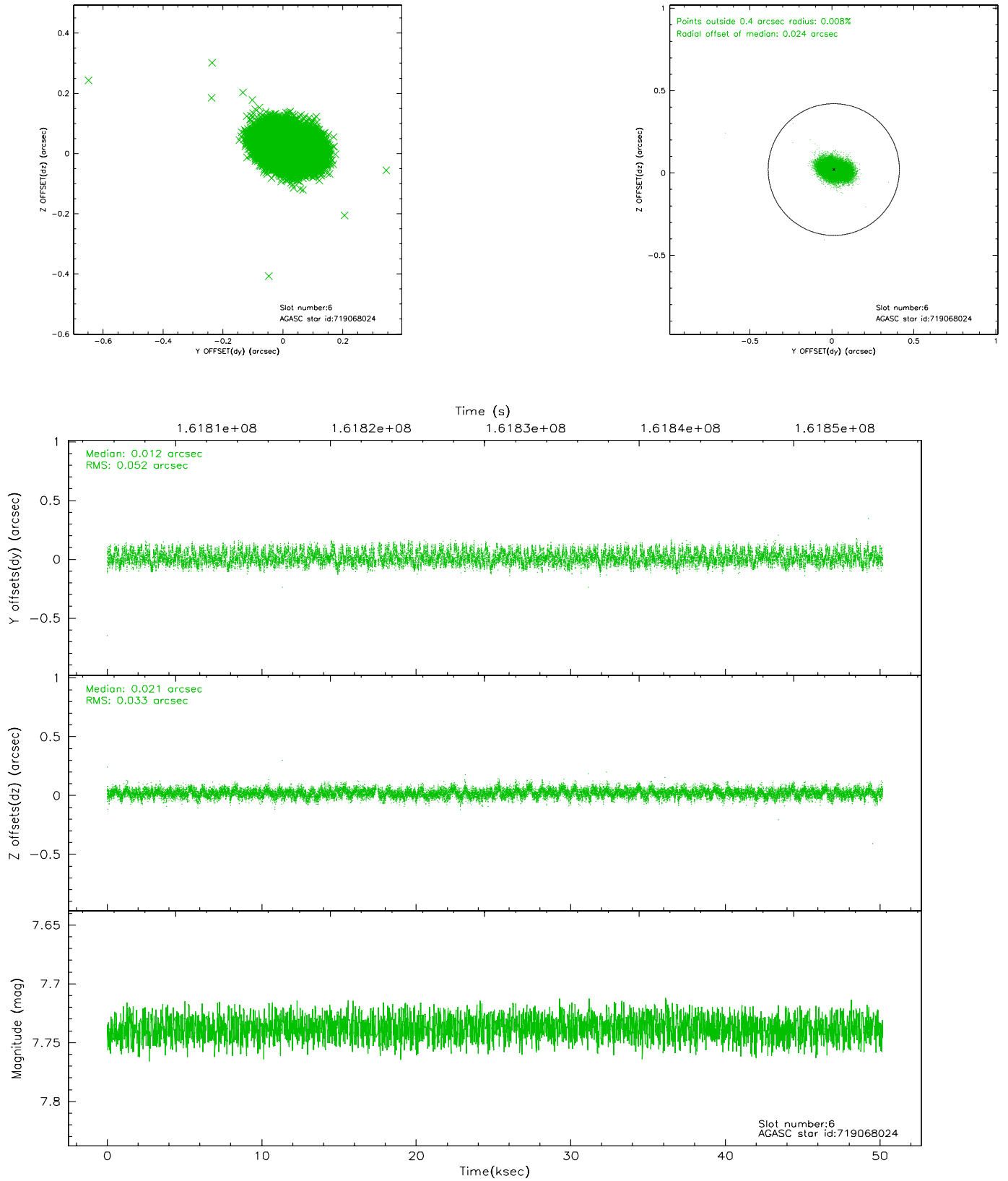
2.4.2 Slot 4



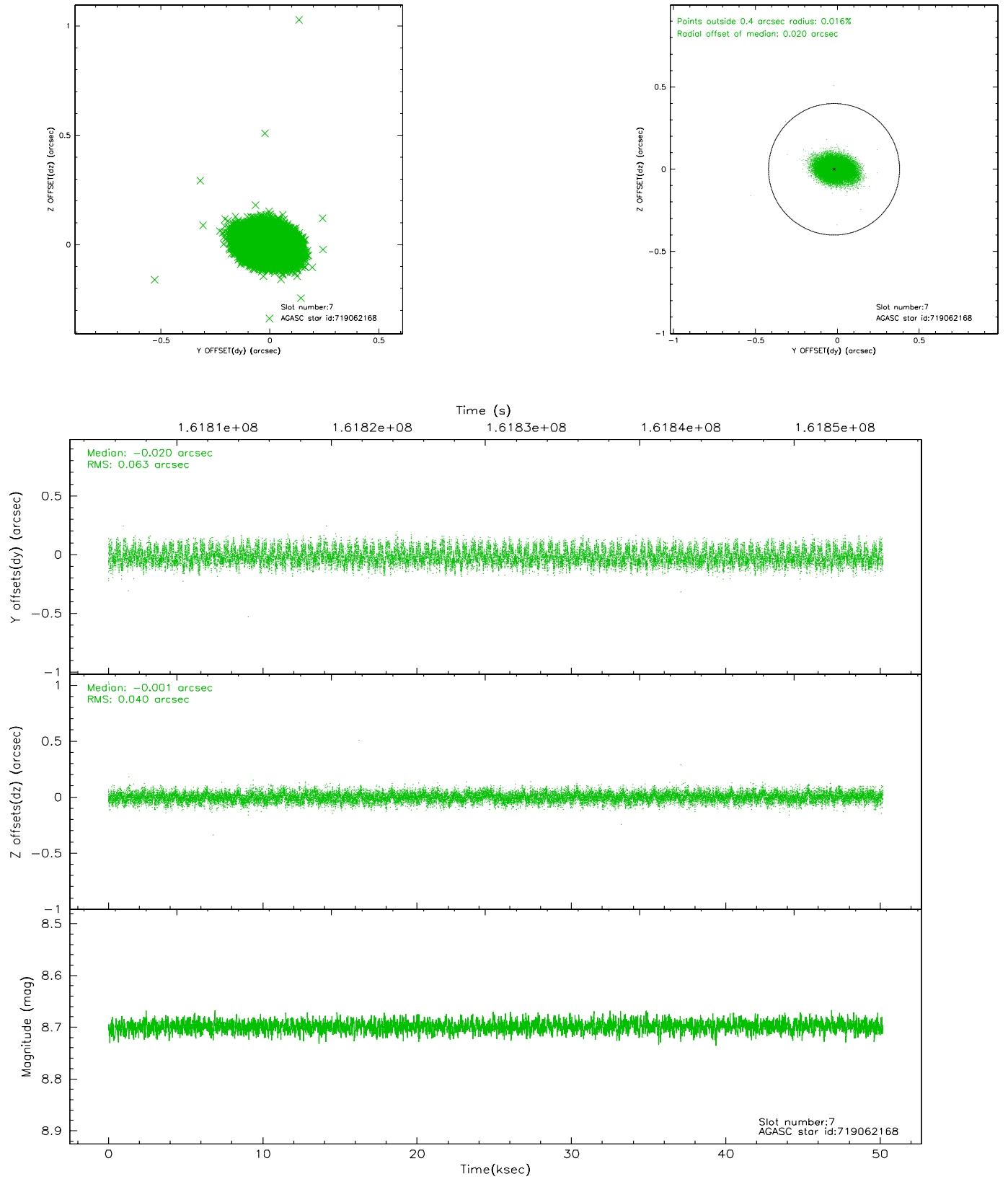
2.4.3 Slot 5



2.4.4 Slot 6

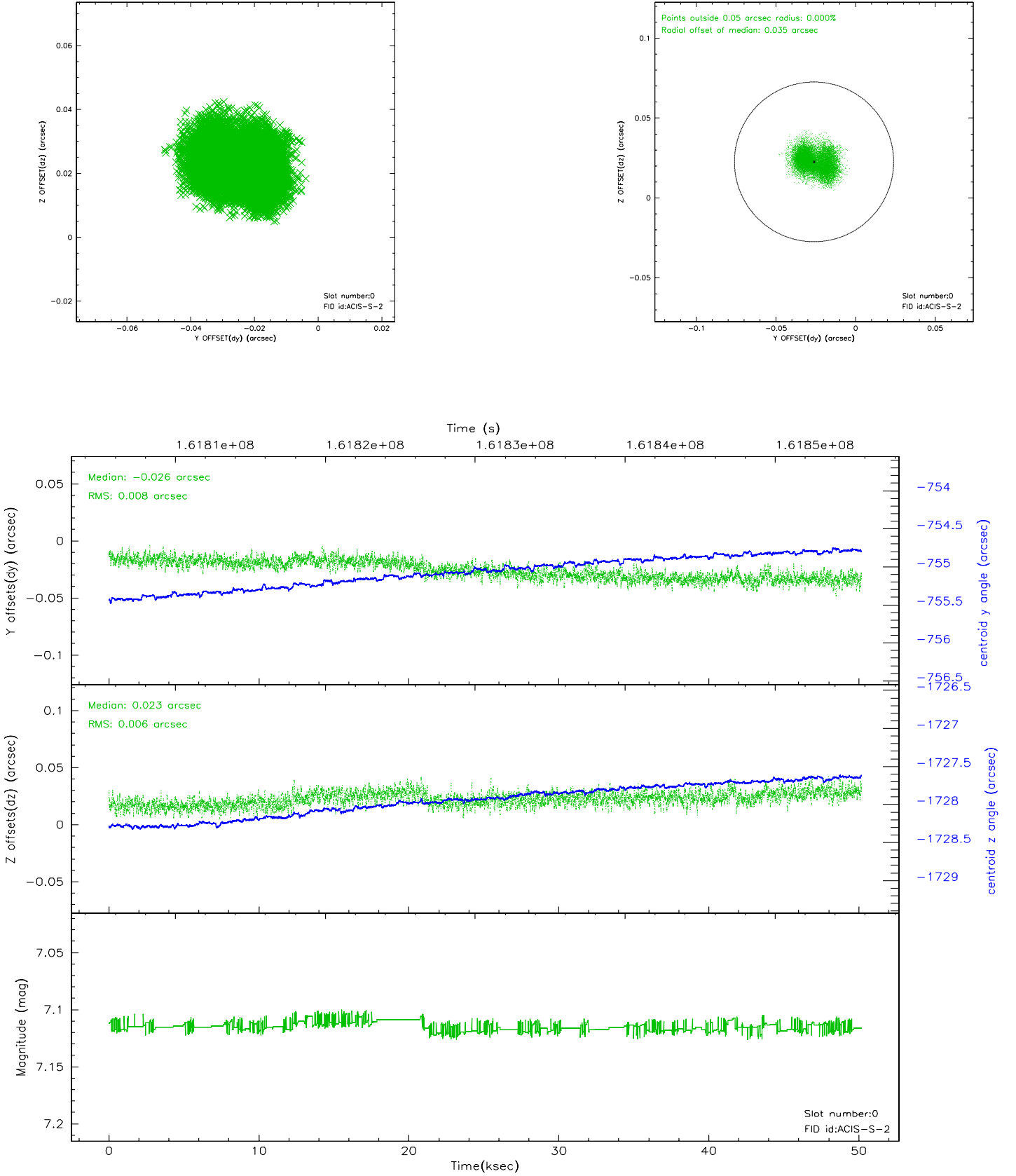


2.4.5 Slot 7

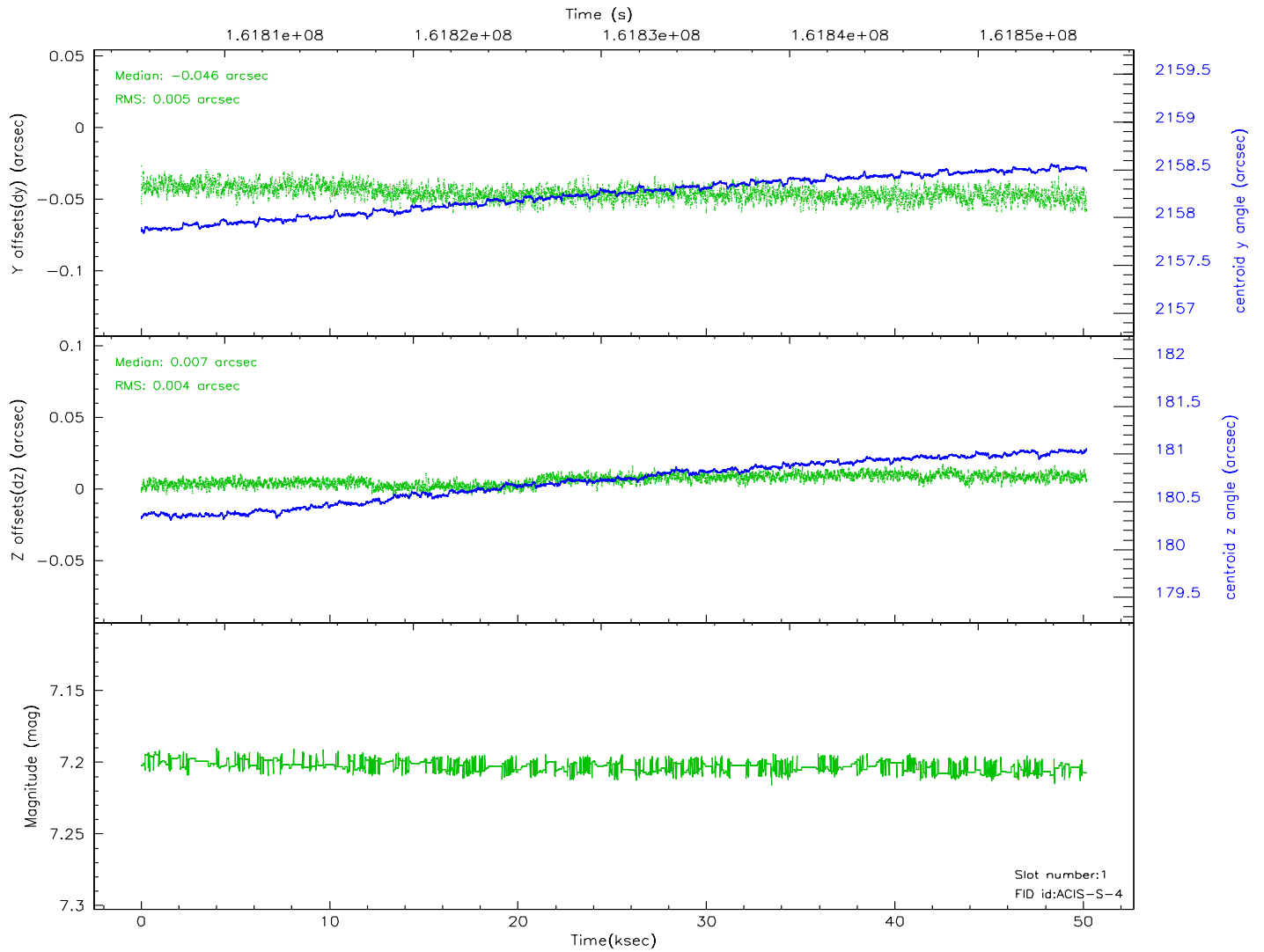
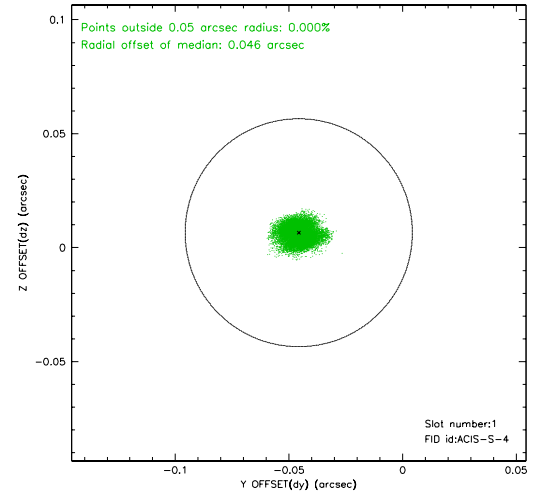
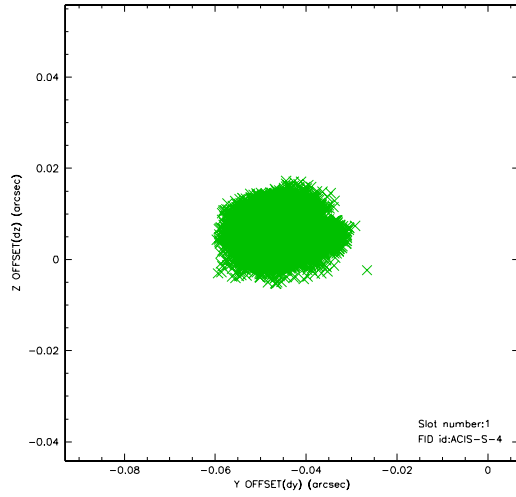


2.5 FID Slots

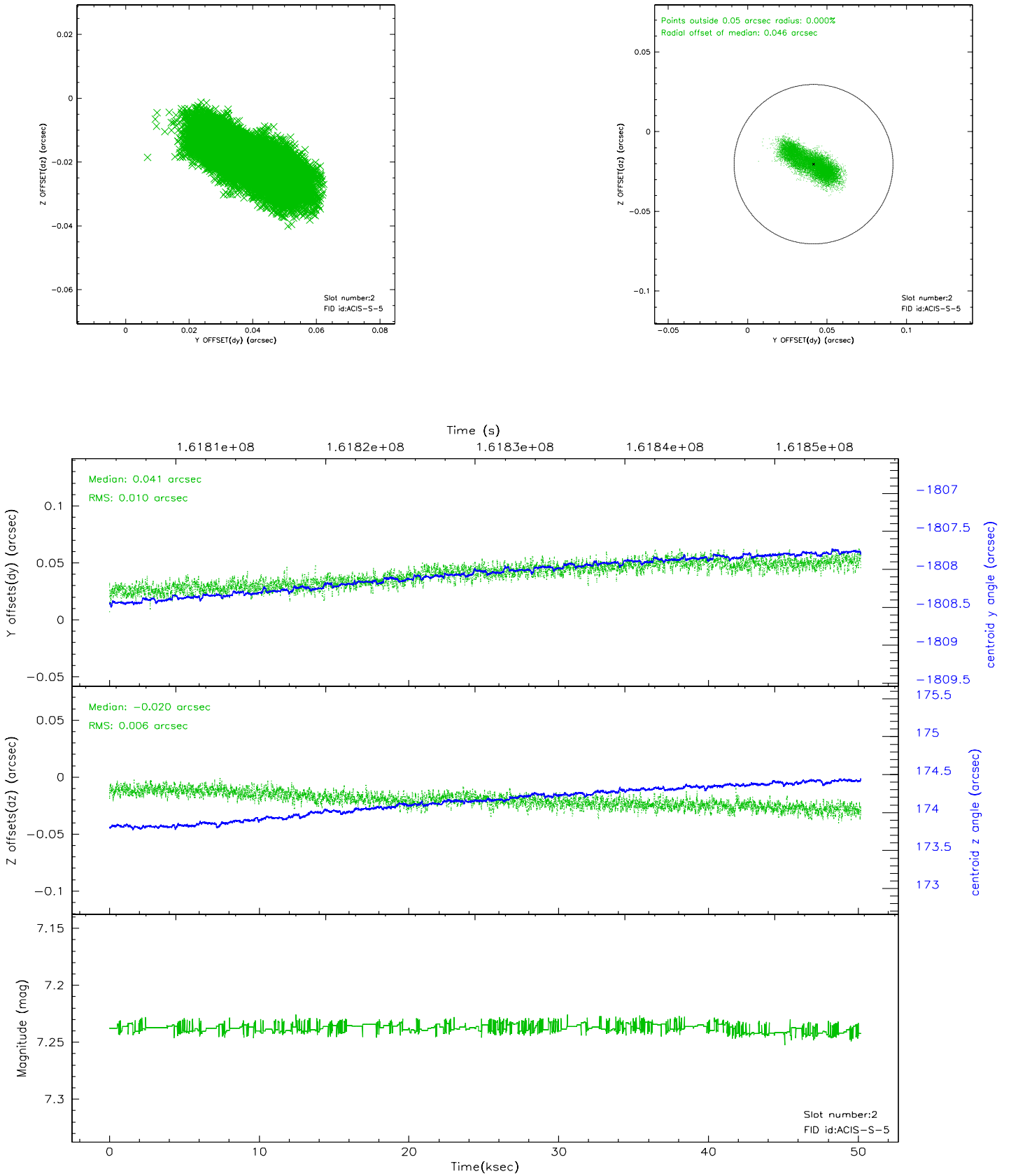
2.5.1 Slot 0



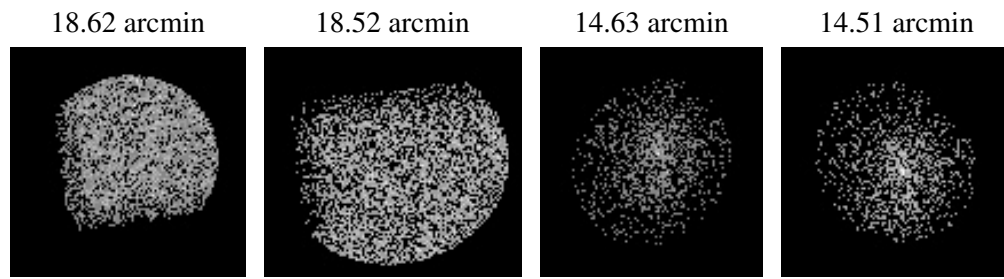
2.5.2 Slot 1



2.5.3 Slot 2



3 Point Sources



A Summary

A.1 Status

V&V Scientist	Joy Nichols
V&V Date (YYYY-MM-DD)	2006.07.28
V&V Edition	1
V&V Disposition and Status	OK
V&V Charge Time	50.18

A.2 Comments

Significant pileup associated with the core of the source.

Roll angle constraint of 350 +/- 30 degrees met.