

V&V Reference Report

L2 ASCDS Version : 7.6.9

Observation 3846 - L2 Version 001
Chandra X-Ray Center

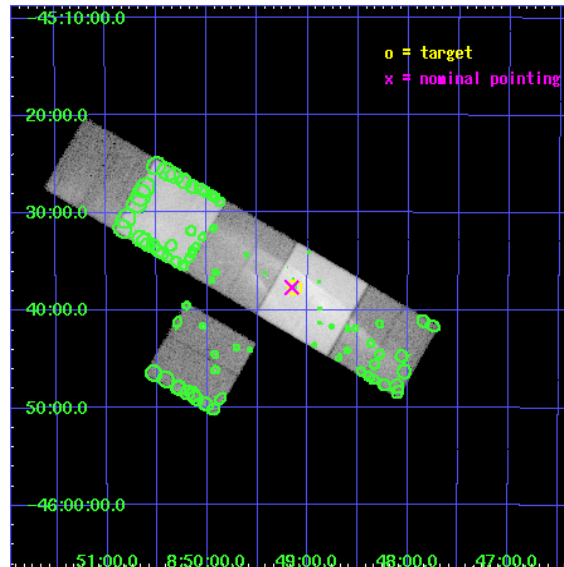
L2 Processing Date : Oct 18 2006

Contents

1	Front	2
2	OBI	3
2.1	OBI	3
2.1.1	Images	3
2.1.2	Bias	3
2.1.3	Parameters	4
2.1.4	Events	4
2.2	Compared Parameters	5
2.3	Aspect	6
2.4	Star Slots	9
2.4.1	Slot 3	9
2.4.2	Slot 4	10
2.4.3	Slot 5	11
2.4.4	Slot 6	12
2.4.5	Slot 7	13
2.5	FID Slots	14
2.5.1	Slot 0	14
2.5.2	Slot 1	15
2.5.3	Slot 2	16
3	Point Sources	17
A	Summary	18
A.1	Status	18
A.2	Comments	18

1 Front

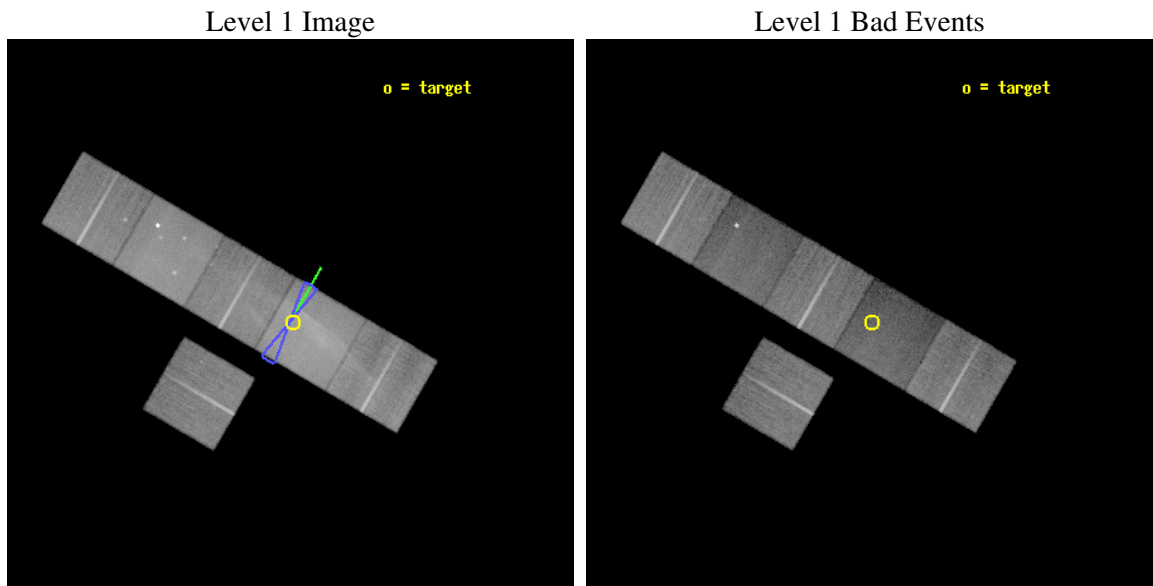
seq_num	500325
obs_id	3846
title	A STUDY OF THE X-RAY LUMINOUS NORTHWESTERN RIM OF THE GALACTIC SUPERNOVA REMNANT G266.2-1.2
observer	Dr. Thomas Pannuti
object	G266.2-1.2 - NW
dtcycle	0
cycle	P
ra_targ	132.283
dec_targ	-45.629
ra_nom	132.28916142207
dec_nom	-45.628447316145
roll_nom	30.161027074016
revision	2
ontime	39958.399851143
livetime	39452.422532168
ontime2	39951.917890608
ontime4	39958.399851143
ontime5	39958.399851143
ontime6	39955.15888086
ontime7	39958.399851143
ontime8	39955.15888086
l2events	732350



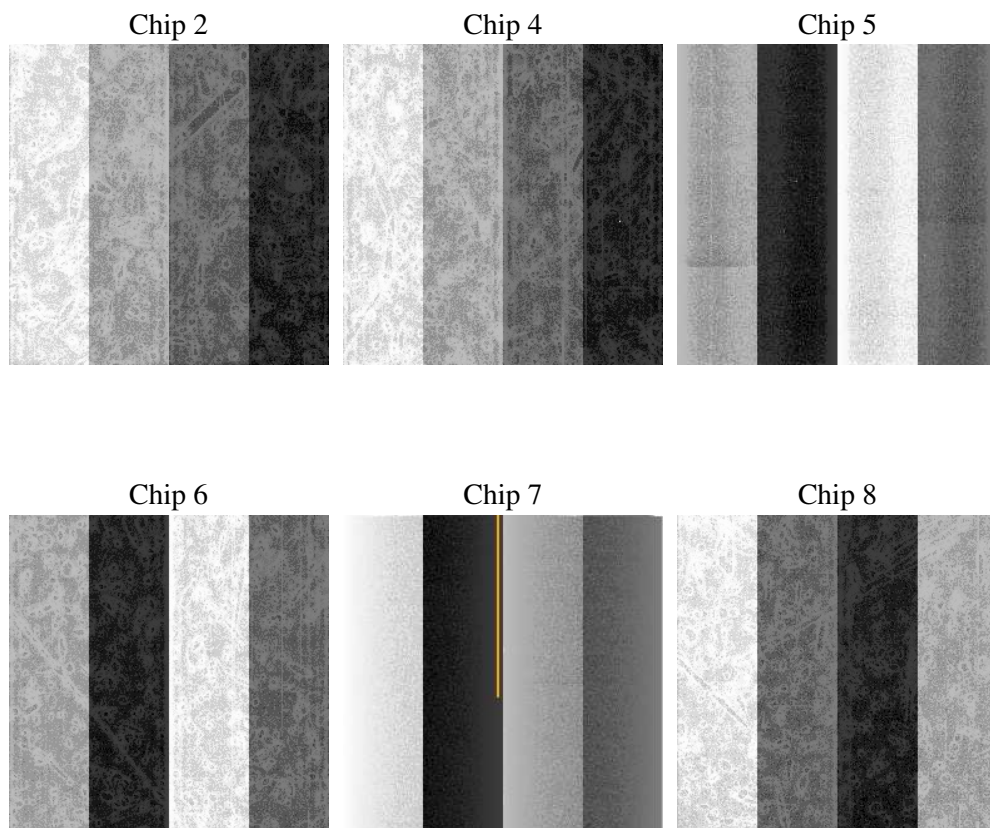
2 OBI

2.1 OBI

2.1.1 Images



2.1.2 Bias



2.1.3 Parameters

obi_num	0
ascdsver	7.6.9
caldbver	3.2.3
date	2006-10-18T21:26:24
revision	2

sched_exp_time	40000.000000
ontime	39961.60992071
ontime2	39955.127960175
ontime4	39961.609890759
ontime5	39961.60992071
ontime6	39958.368920475
ontime7	39961.60992071
ontime8	39958.368950427
l1events	1794761

2.1.4 Events

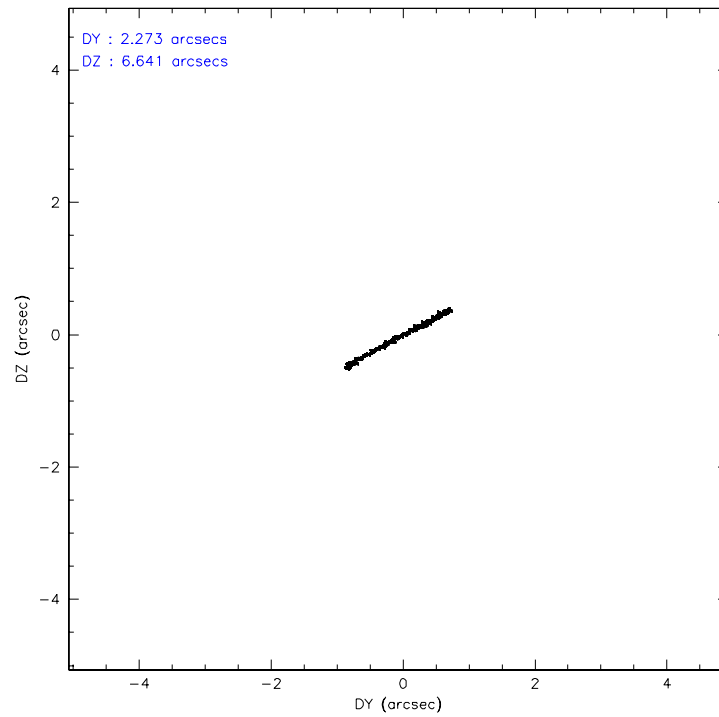
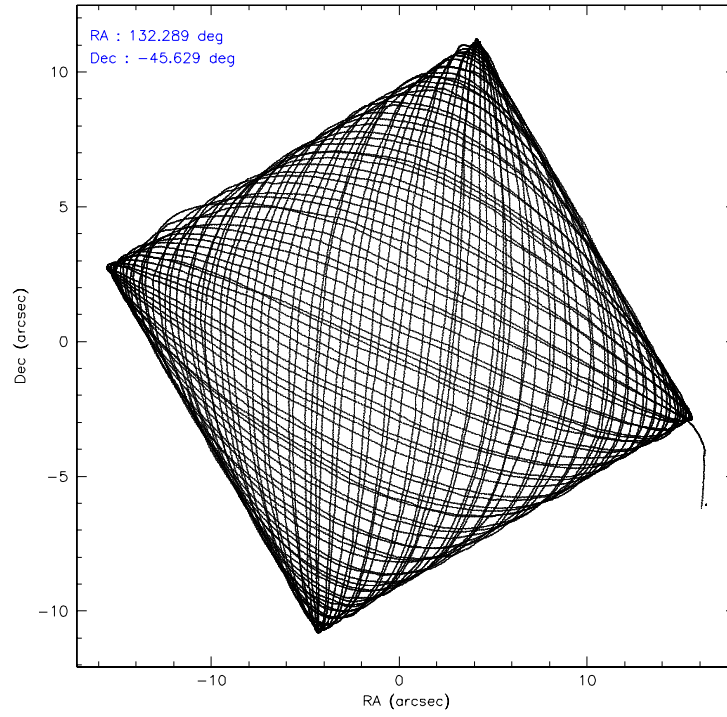
	ccd 2	ccd 4	ccd 5	ccd 6	ccd 7	ccd 8
level 1 events	229913	254253	340750	272210	414316	283319
rejected events	187162	210093	117765	181861	98752	187604
rejected %	81%	82%	34%	66%	23%	66%

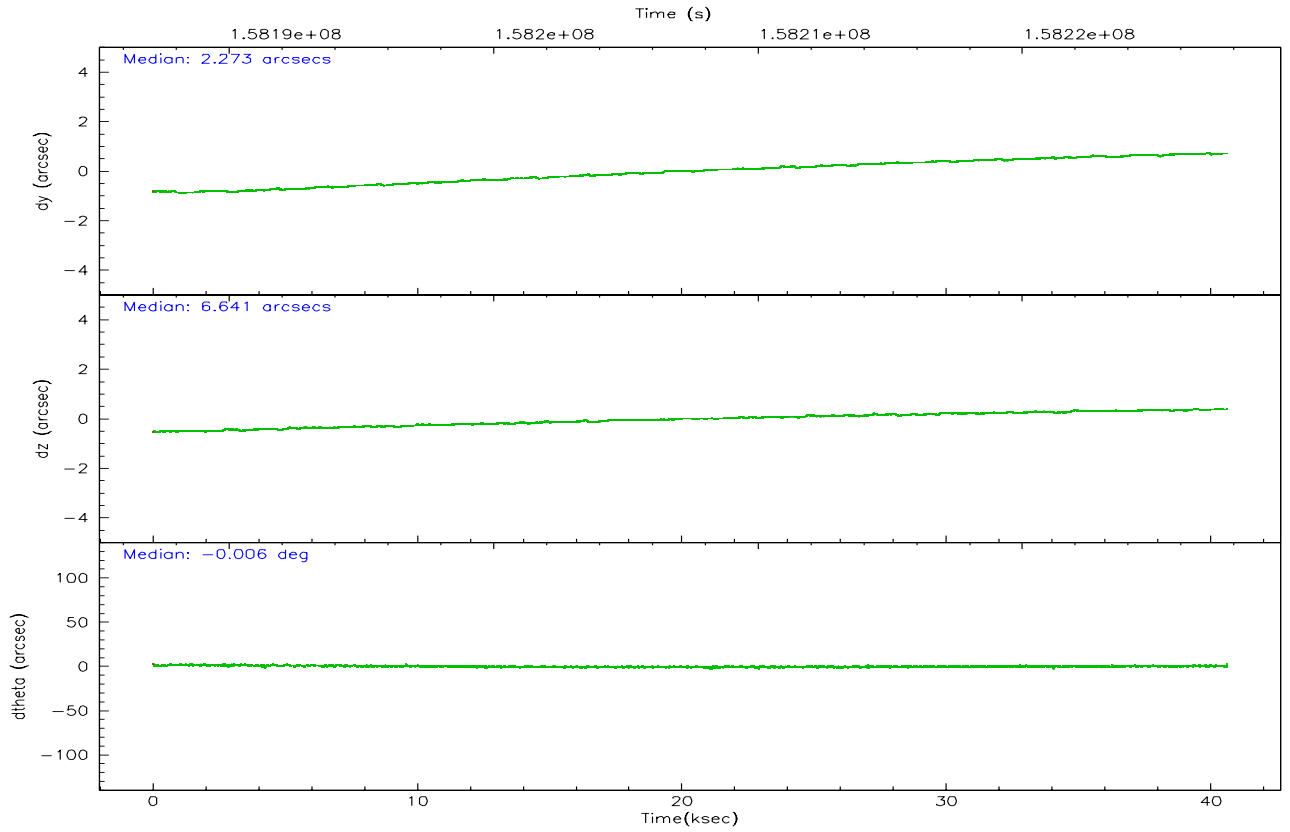
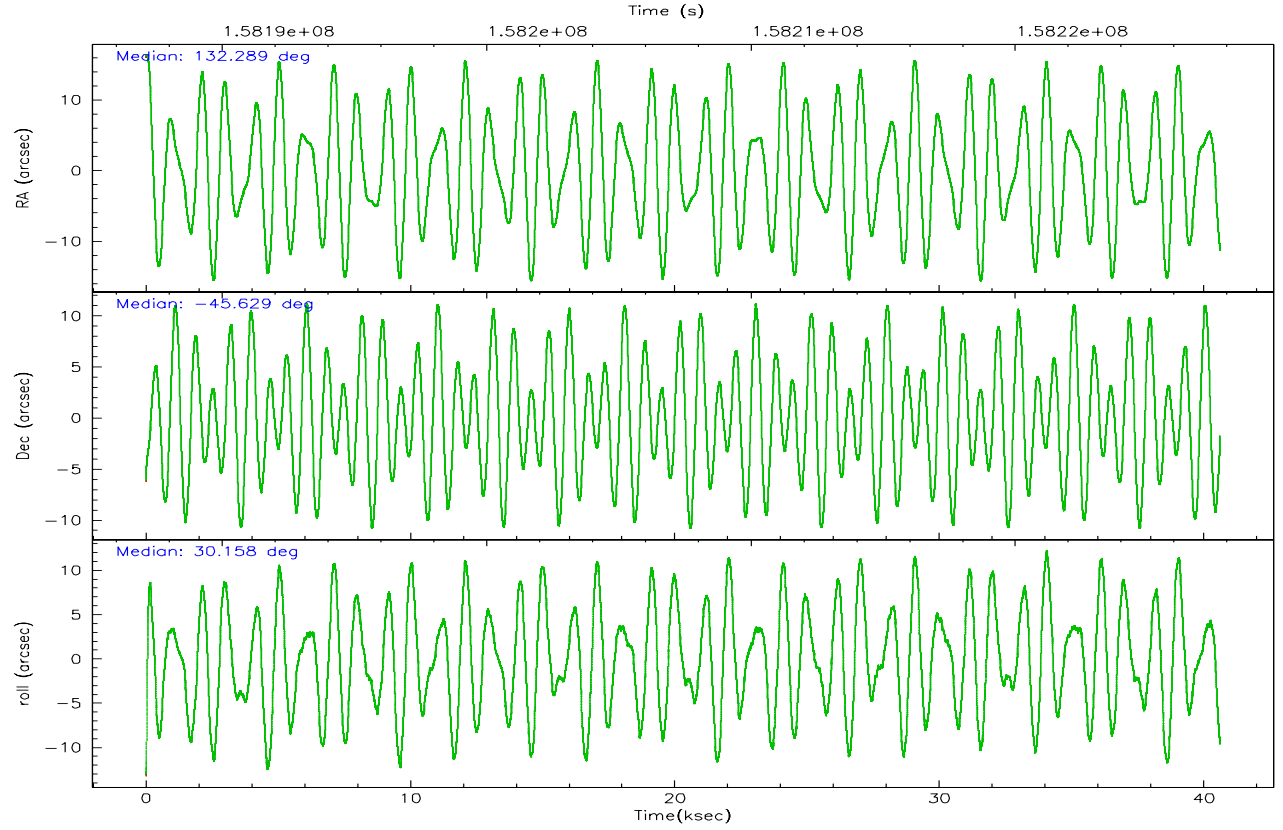
	ccd 2	ccd 4	ccd 5	ccd 6	ccd 7	ccd 8
grade 0 events	28892	29098	53996	69162	107543	51303
	12%	11%	15%	25%	25%	18%
grade 1 events	184	314	3420	305	147	306
	0%	0%	1%	0%	0%	0%
grade 2 events	5750	6366	72383	9464	79235	15187
	2%	2%	21%	3%	19%	5%
grade 3 events	2418	2669	11098	3541	28120	7281
	1%	1%	3%	1%	6%	2%
grade 4 events	2430	2617	10998	3449	27320	6644
	1%	1%	3%	1%	6%	2%
grade 5 events	5326	6334	13796	6658	15824	9709
	2%	2%	4%	2%	3%	3%
grade 6 events	3266	3411	74525	4738	73381	15309
	1%	1%	21%	1%	17%	5%
grade 7 events	181647	203444	100534	174893	82746	177580
	79%	80%	29%	64%	19%	62%

2.2 Compared Parameters

Parameter	Planned	Actual	Parameter	Planned	Actual
Instrument	ACIS	ACIS	Obspar format version number	6	6
Detector	ACIS-245678	ACIS-245678	Obspar file type	PREDICTED	ACTUAL
Grating	NONE	NONE	Obspar update status	NONE	UPDATED
Data mode	VFAINT	VFAINT	Number of optional ACIS chips dropped	0	0
Observation mode	POINTING	POINTING	On-chip summing requested	N	N
Pointing RA	132.270254	132.289161422073	Subarray requested	NONE	NONE
Pointing Dec	-45.652229	-45.62844731614535	Alternating exposures requested	N	N
Pointing Roll	29.990887	30.16102707401621	Primary exposure time	0.000000	3.2
Roll angle	30.000000	30.000000			
Roll tolerance	10.000000	10.000000			
Roll constraint allows 180D rotation	Y	Y			
SIM focus pos (mm)	-0.684267	-0.6828225247311905			
SIM defocus (mm)	0	0.001444936568705701			
SIM translation stage pos (mm)	-190.132523	-190.1400660498719			
SIM translation stage offset (mm)	0	0.00754346686406393			
Observation start time	158187736.184000	158186563.54735			
Observation start date	2003-01-05T21:01:12	2003-01-05T20:42:43			
Observation end time	158227736.184000	158228561.3866			
Observation end date	2003-01-06T08:07:52	2003-01-06T08:22:41			
Read mode	TIMED	TIMED			

2.3 Aspect



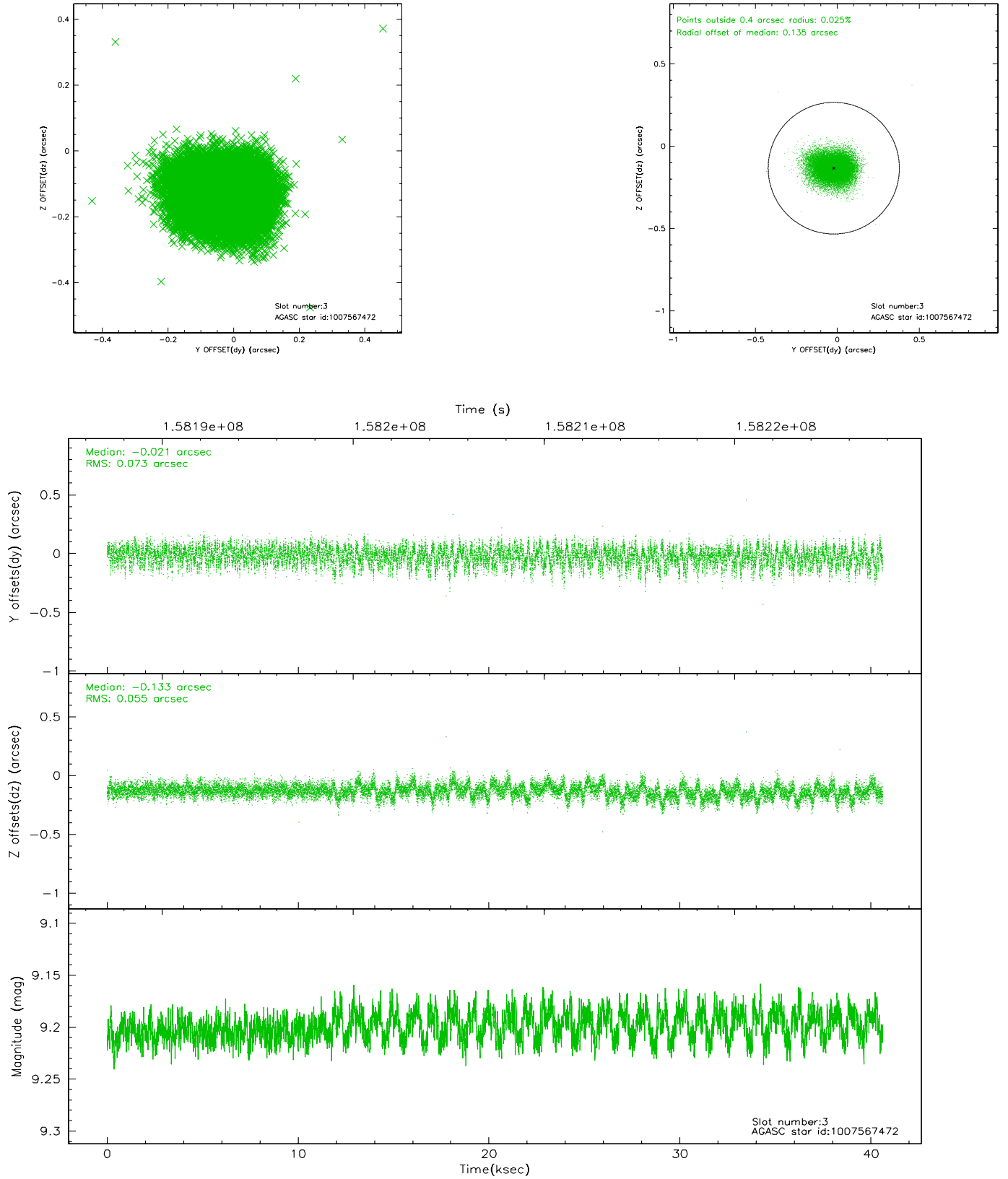


Slot Statistics

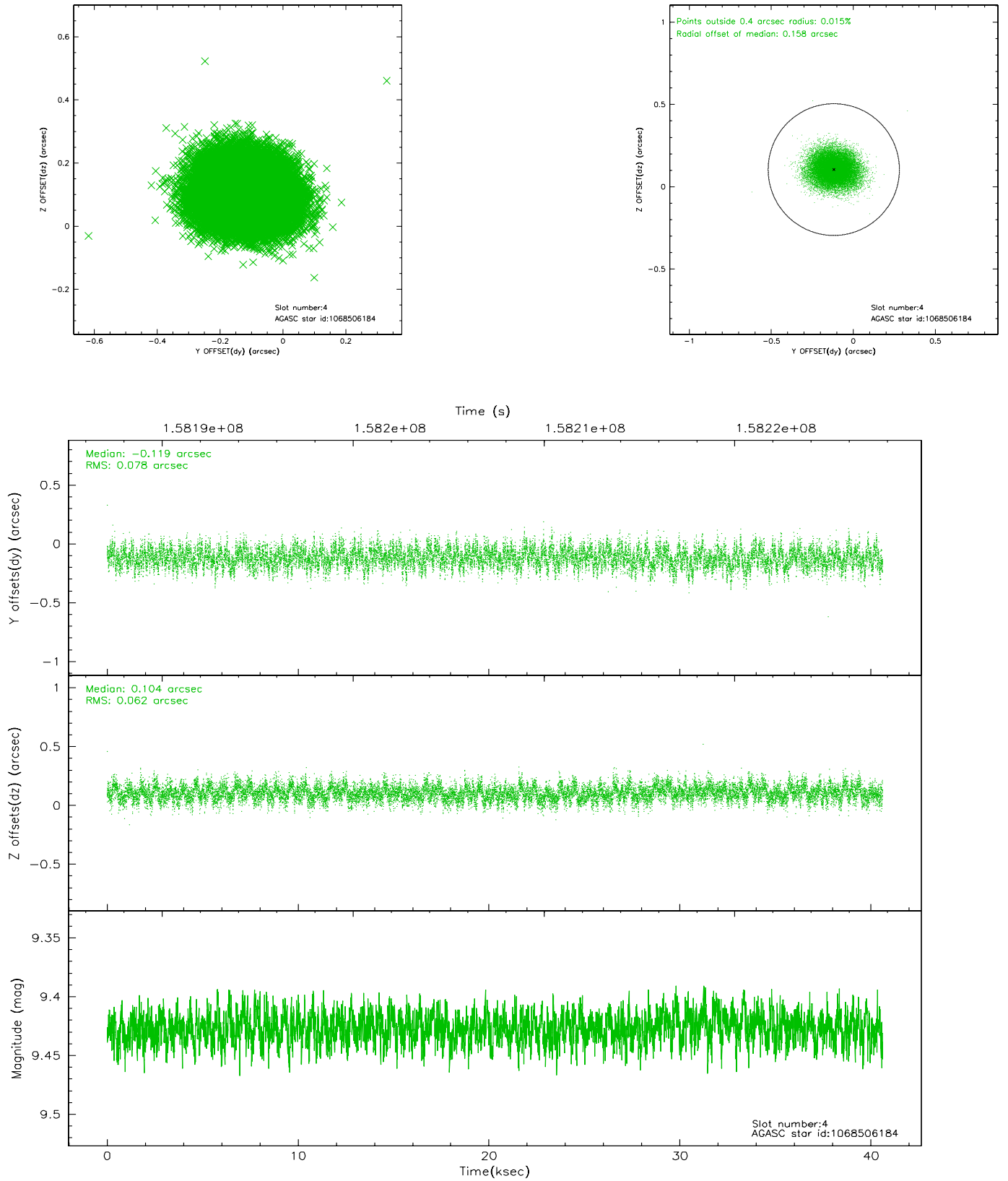
slot	status	id	mag	n_pts	med_dy	med_dz	dr1	dr2	ra	dec	mean_y	mean_z
0	FID	ACIS-S-1	7.19	9906	0.009	-0.014	0.011	0.019	0.000000	0.000000	941.21	-1723.40
1	FID	ACIS-S-4	7.21	9904	-0.037	0.001	0.009	0.015	0.000000	0.000000	2158.54	180.79
2	FID	ACIS-S-6	7.36	9905	0.004	0.028	0.011	0.021	0.000000	0.000000	407.12	818.15
3	GUIDE	1007567472	9.20	19798	-0.021	-0.133	0.097	0.158	132.458388	-44.880848	1803.89	2164.97
4	GUIDE	1068506184	9.43	19801	-0.119	0.104	0.106	0.171	133.354089	-45.784106	2110.64	-1786.78
5	GUIDE	1068390080	8.91	19800	0.089	0.039	0.083	0.136	131.860714	-46.048812	-1600.57	-727.13
6	GUIDE	1068395856	8.23	19806	0.015	-0.033	0.066	0.106	131.866515	-46.451101	-2305.77	-1992.54
7	GUIDE	1068509768	9.66	19791	0.044	0.028	0.111	0.183	132.898806	-45.654489	1363.10	-802.78

2.4 Star Slots

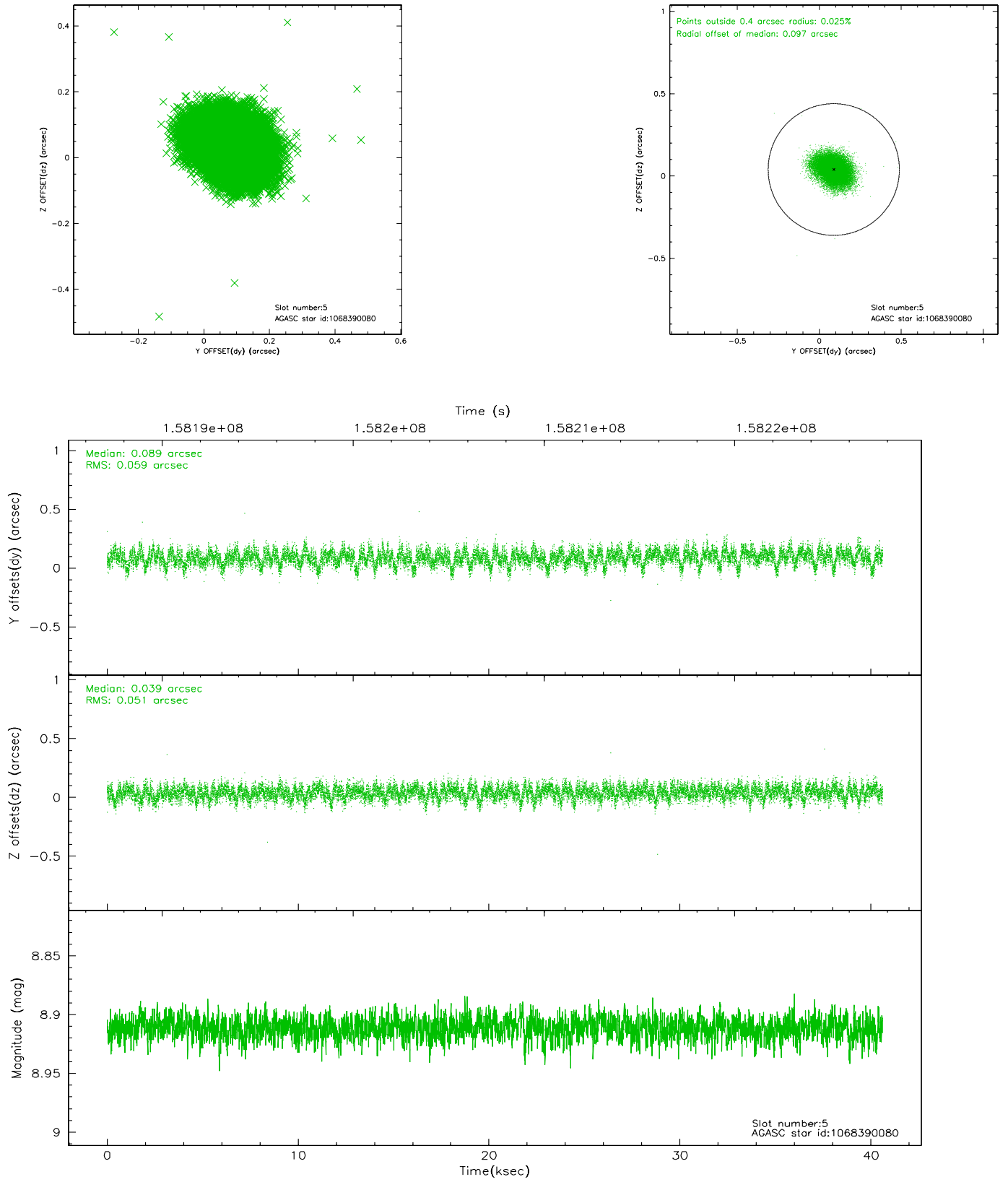
2.4.1 Slot 3



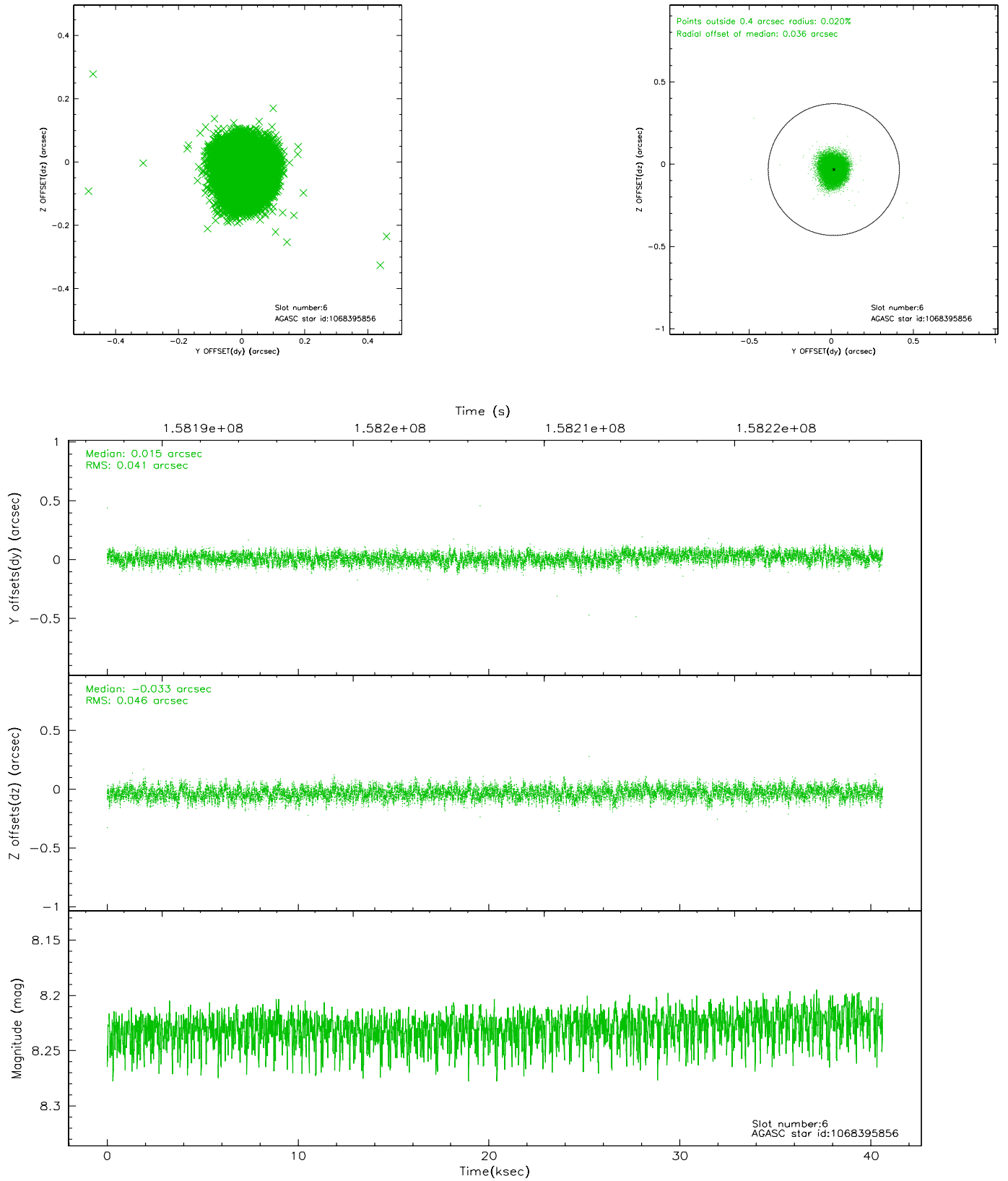
2.4.2 Slot 4



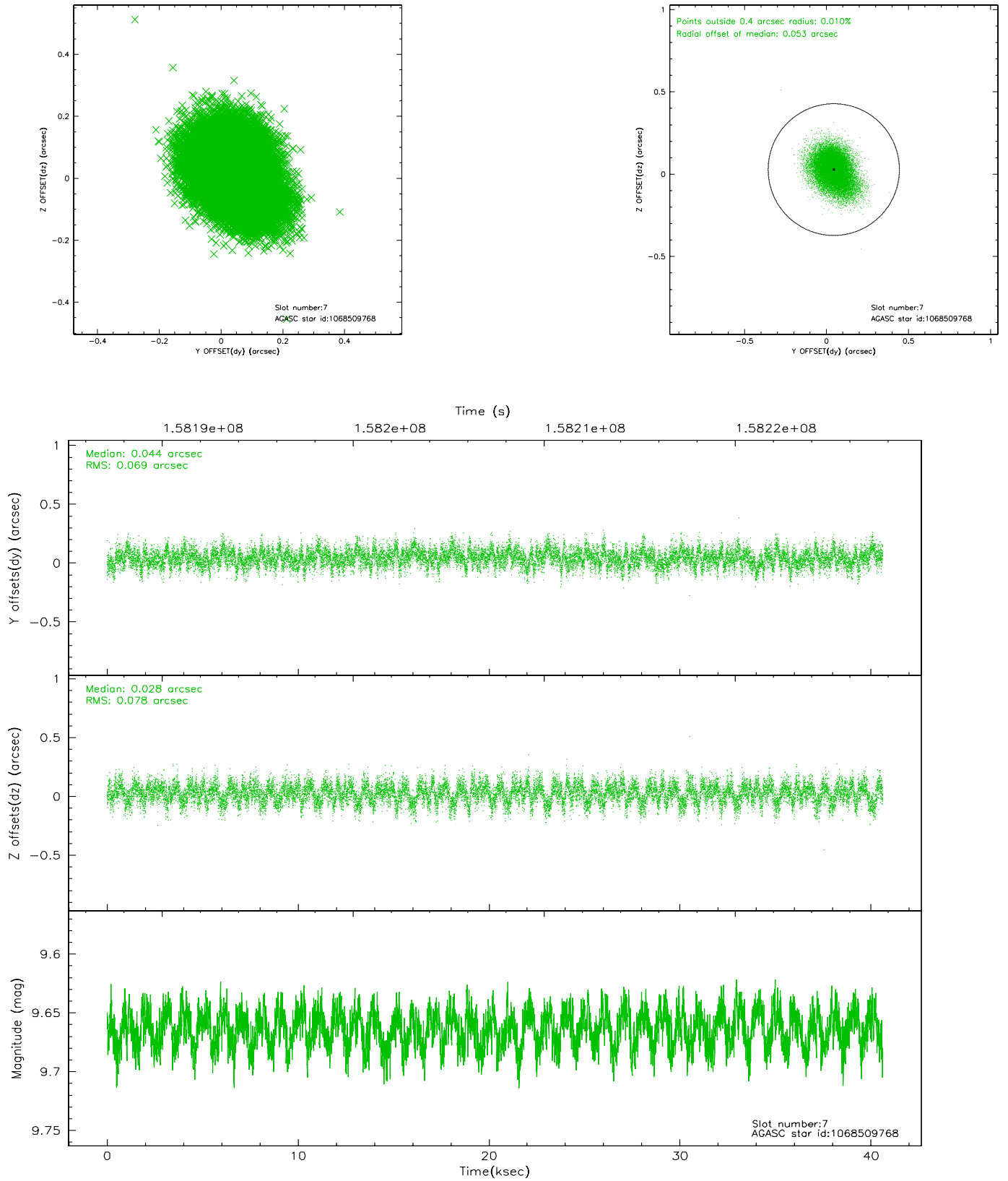
2.4.3 Slot 5



2.4.4 Slot 6

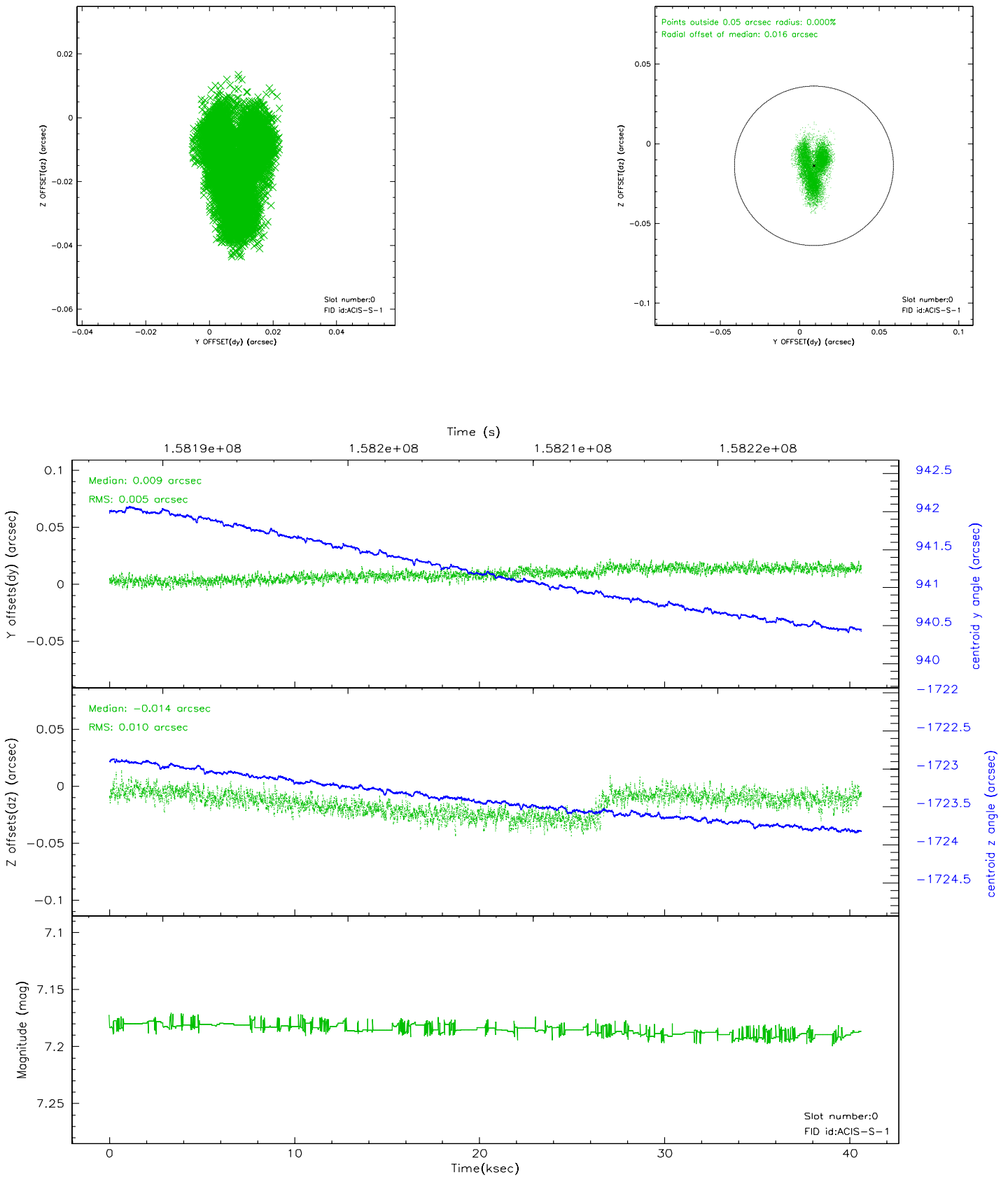


2.4.5 Slot 7

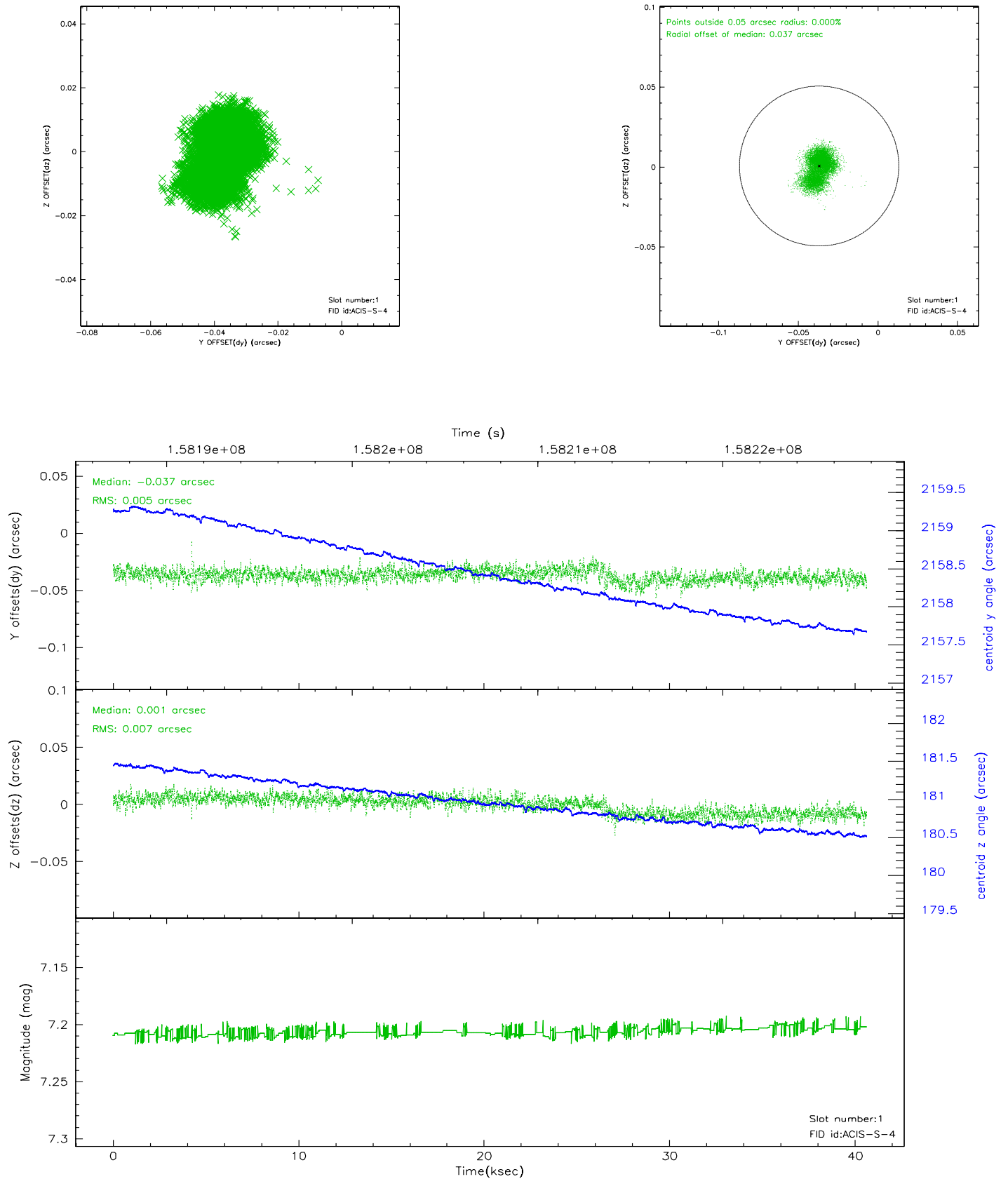


2.5 FID Slots

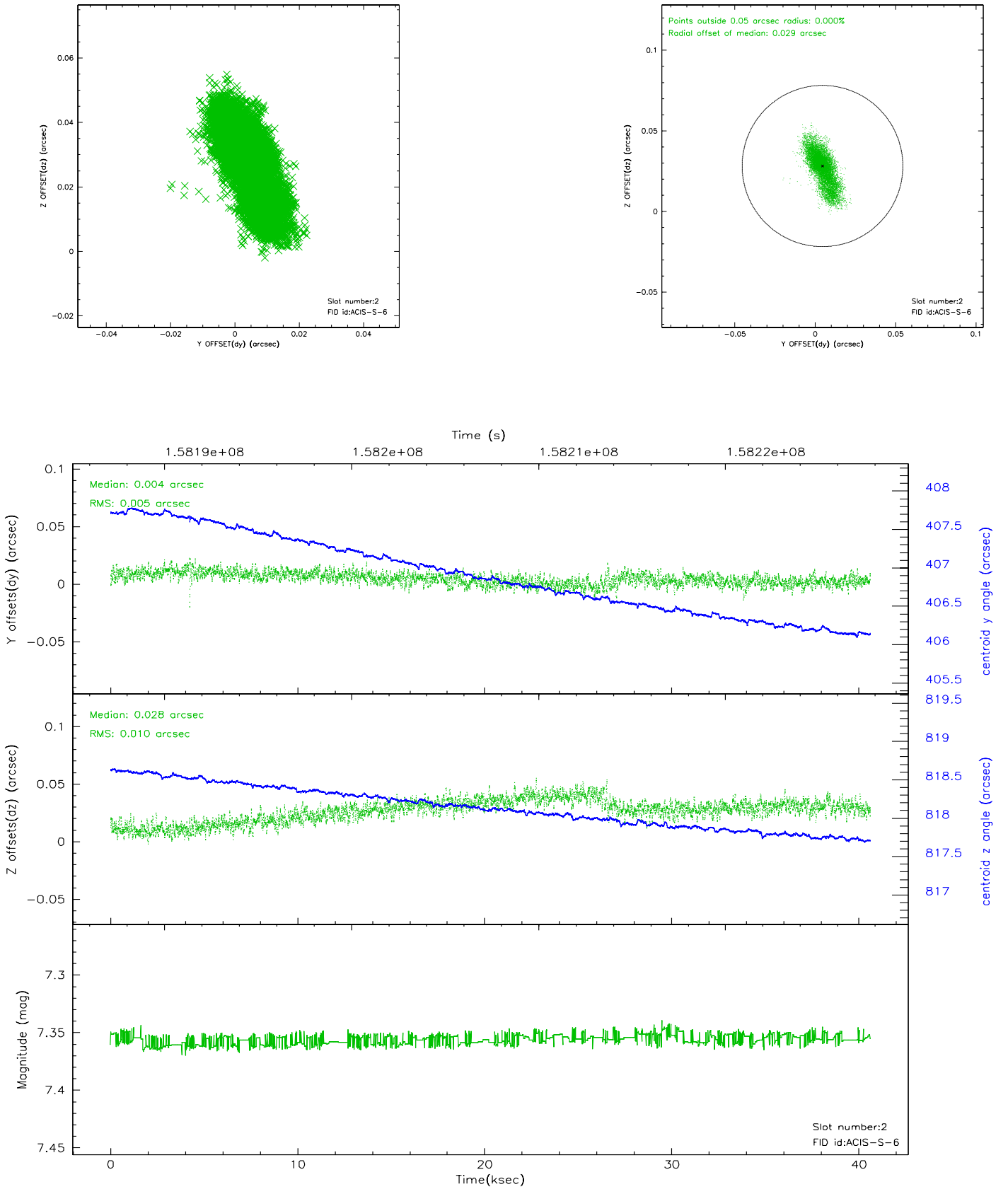
2.5.1 Slot 0



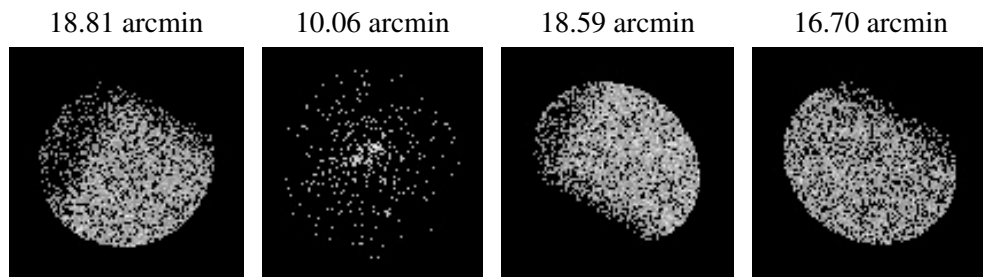
2.5.2 Slot 1



2.5.3 Slot 2



3 Point Sources



A Summary

A.1 Status

V&V Scientist	Jen Lauer
V&V Date (YYYY-MM-DD)	2006.10.19
V&V Edition	1
V&V Disposition and Status	OK
V&V Charge Time	39.958

A.2 Comments

Roll constraint met.