

# V&V Reference Report

## L2 ASCDS Version : 7.6.8

Observation 3626 - L2 Version 001  
Chandra X-Ray Center

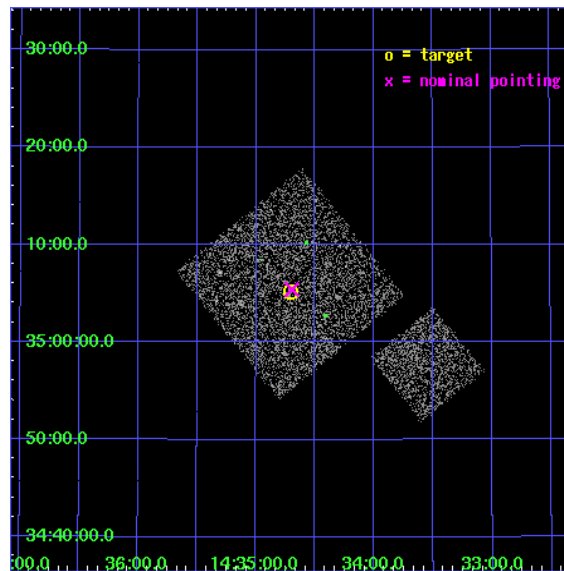
L2 Processing Date : Jul 29 2006

## Contents

<b>1</b>	<b>Front</b>	<b>2</b>
<b>2</b>	<b>OBI</b>	<b>3</b>
2.1	OBI . . . . .	3
2.1.1	Images . . . . .	3
2.1.2	Bias . . . . .	3
2.1.3	Parameters . . . . .	4
2.1.4	Events . . . . .	4
2.2	Compared Parameters . . . . .	5
2.3	Aspect . . . . .	6
2.4	Star Slots . . . . .	9
2.4.1	Slot 3 . . . . .	9
2.4.2	Slot 4 . . . . .	10
2.4.3	Slot 5 . . . . .	11
2.4.4	Slot 6 . . . . .	12
2.4.5	Slot 7 . . . . .	13
2.5	FID Slots . . . . .	14
2.5.1	Slot 0 . . . . .	14
2.5.2	Slot 1 . . . . .	15
2.5.3	Slot 2 . . . . .	16
<b>3</b>	<b>Point Sources</b>	<b>17</b>
<b>A</b>	<b>Summary</b>	<b>18</b>
A.1	Status . . . . .	18
A.2	Comments . . . . .	18

# 1 Front

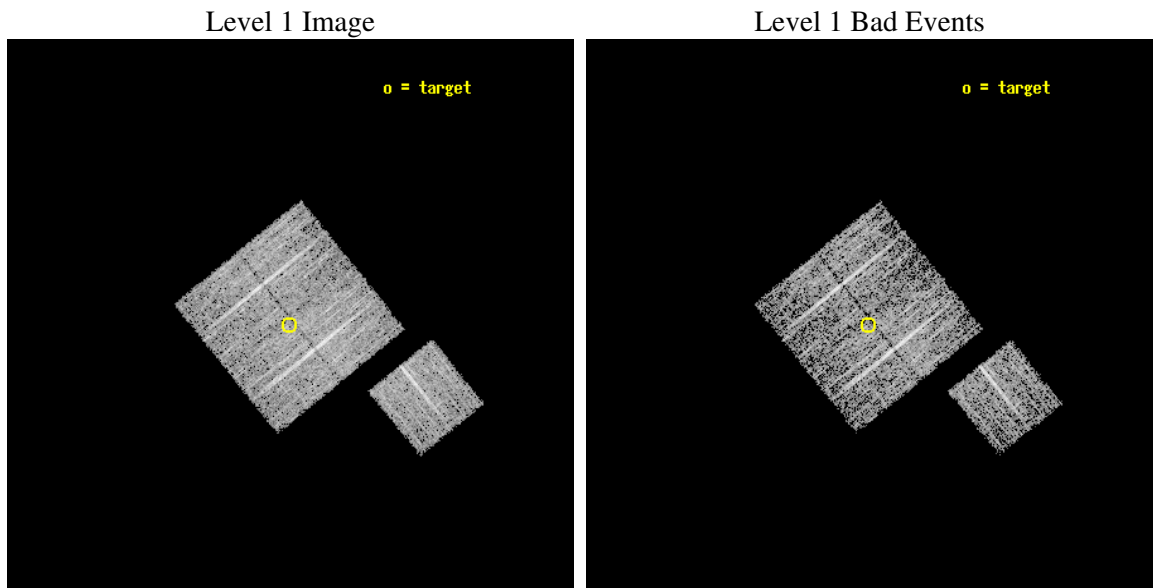
seq_num	900226
obs_id	3626
title	CHANDRA LARGE SCALE SURVEY OF THE NOAO BOOTES DEEP FIELD
observer	Dr. Stephen Murray
object	NOAO FIELD F17
dtcycle	0
cycle	P
ra_targ	218.676831
dec_targ	35.08647
ra_nom	218.6740323322
dec_nom	35.090519569334
roll_nom	141.01029810364
revision	2
ontime	4777.0999908149
livetime	4714.6836625851
ontime0	4777.0999908149
ontime1	4773.9590006471
ontime2	4777.0999908149
ontime3	4777.0999908149
ontime6	4777.0999908149
l2events	9914



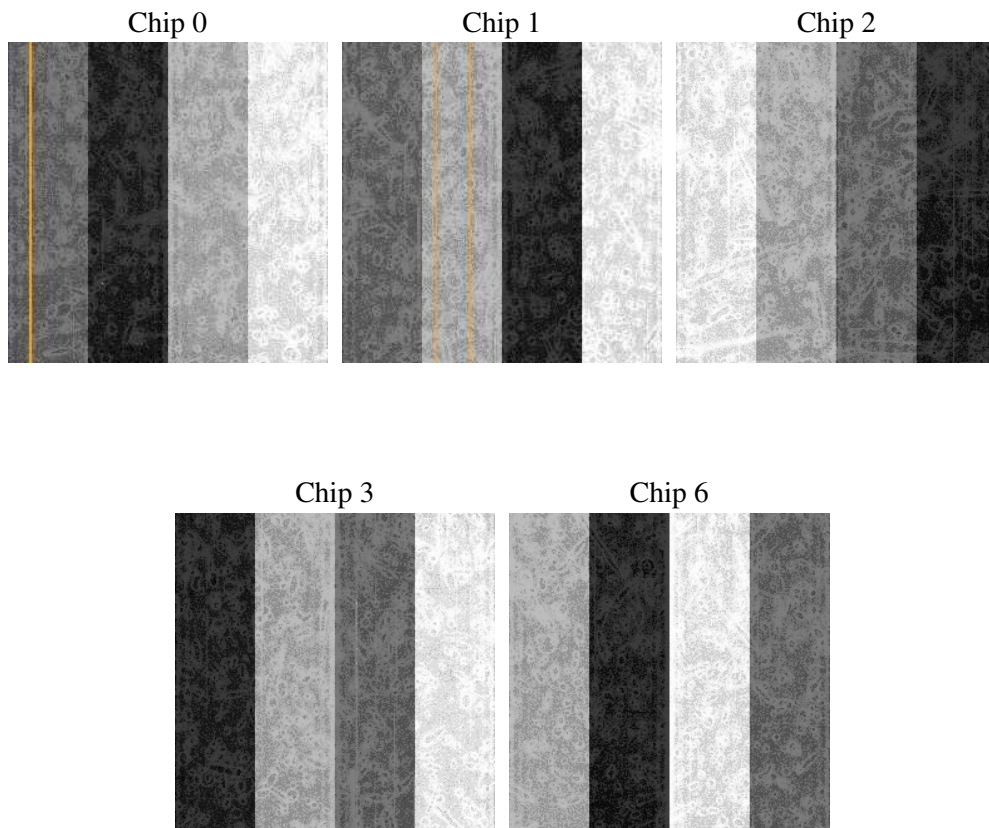
## 2 OBI

### 2.1 OBI

#### 2.1.1 Images



#### 2.1.2 Bias



### 2.1.3 Parameters

obi_num	1
ascdsver	7.6.8
caldsver	3.2.2
date	2006-07-30T02:11:18
revision	2

sched_exp_time	5000.000000
ontime	4780.6135915816
ontime0	4780.6135717034
ontime1	4777.4726014137
ontime2	4780.6135915816
ontime3	4780.6135915816
ontime6	4780.6135717034
l1events	120587

### 2.1.4 Events

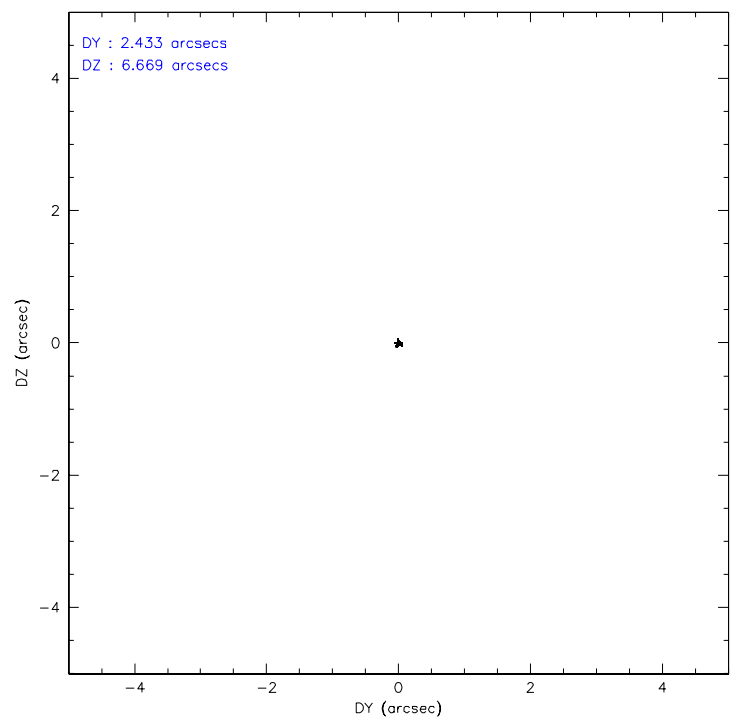
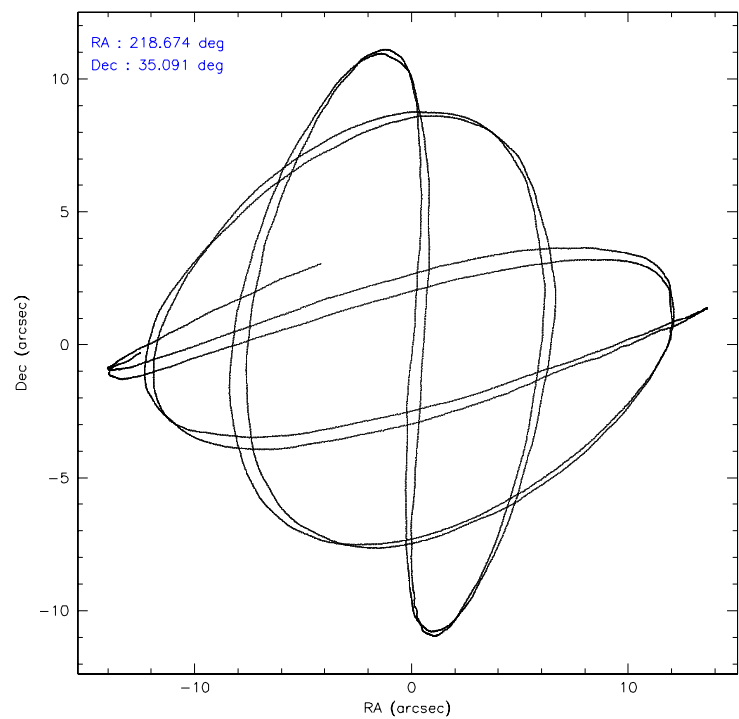
	ccd 0	ccd 1	ccd 2	ccd 3	ccd 6
level 1 events	23618	22858	26454	24206	23451
rejected events	21307	20281	24041	21875	21042
rejected %	90%	88%	90%	90%	89%

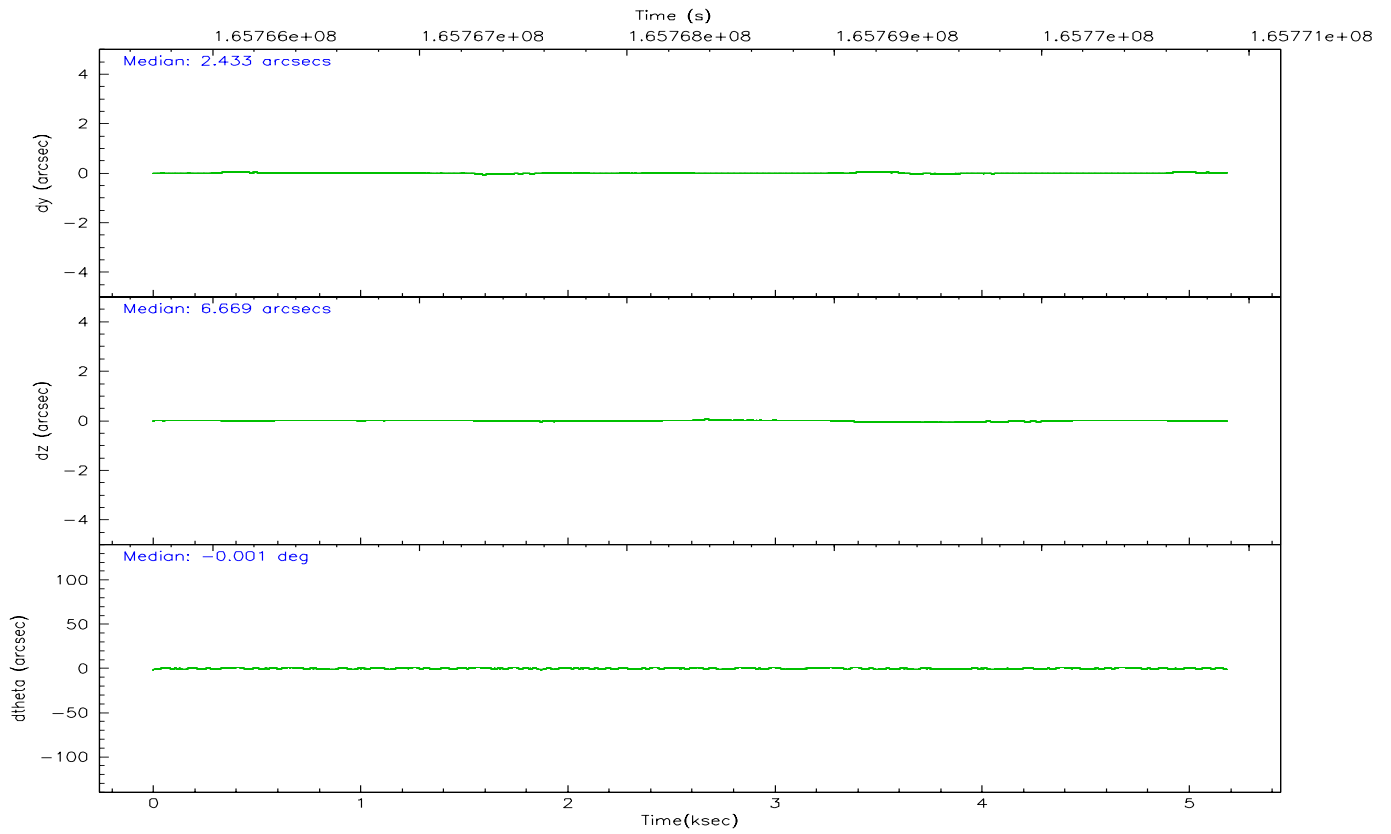
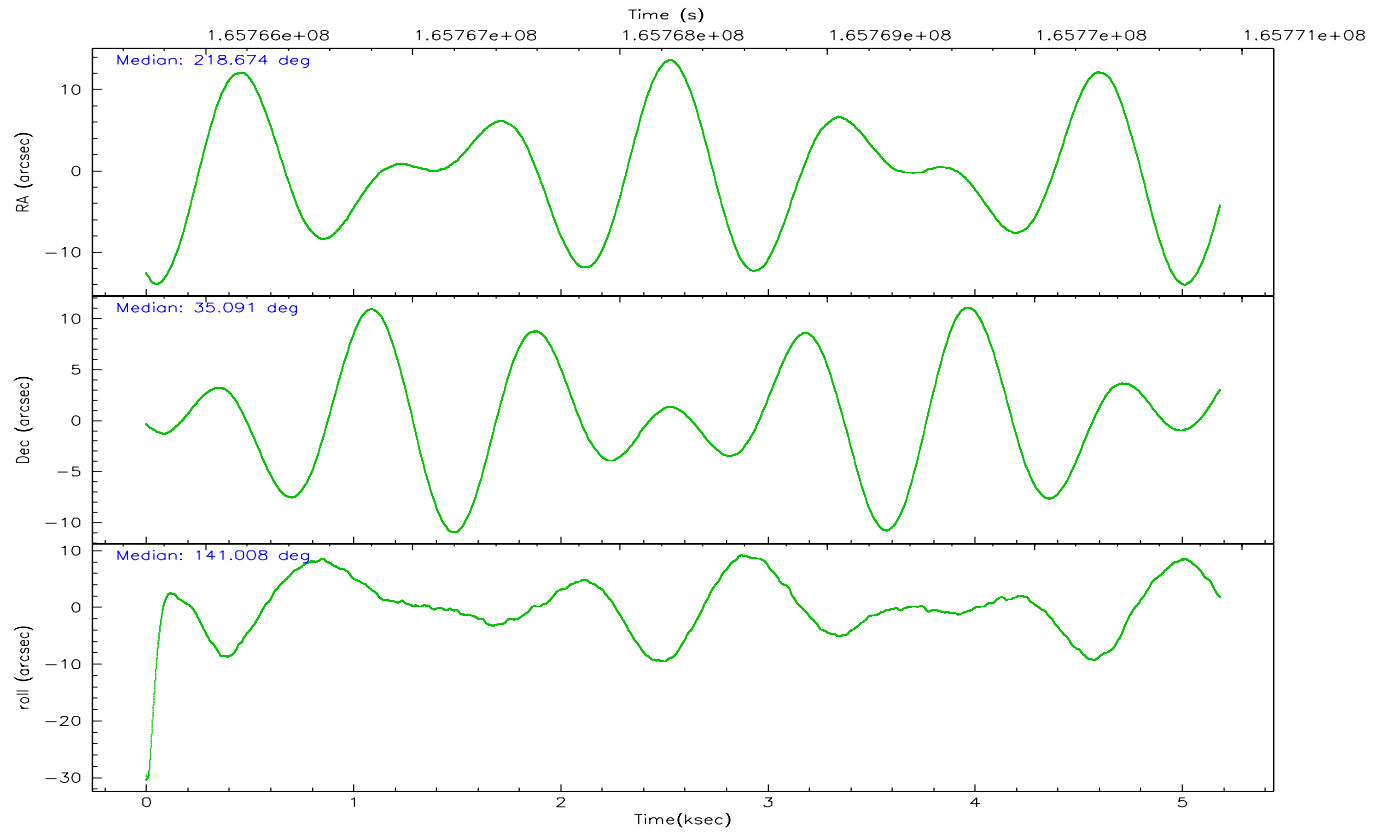
	ccd 0	ccd 1	ccd 2	ccd 3	ccd 6
grade 0 events	852	885	905	888	922
	3%	3%	3%	3%	3%
grade 1 events	11	9	9	10	10
	0%	0%	0%	0%	0%
grade 2 events	495	520	586	495	490
	2%	2%	2%	2%	2%
grade 3 events	282	327	279	242	283
	1%	1%	1%	0%	1%
grade 4 events	255	316	240	252	252
	1%	1%	0%	1%	1%
grade 5 events	690	766	713	752	784
	2%	3%	2%	3%	3%
grade 6 events	429	530	404	455	465
	1%	2%	1%	1%	1%
grade 7 events	20604	19505	23318	21112	20245
	87%	85%	88%	87%	86%

## 2.2 Compared Parameters

Parameter	Planned	Actual	Parameter	Planned	Actual
Instrument	ACIS	ACIS	Obspar format version number	6	6
Detector	ACIS-01236	ACIS-01236	Obspar file type	PREDICTED	ACTUAL
Grating	NONE	NONE	Obspar update status	NONE	UPDATED
Data mode	VFAINT	VFAINT	On-chip summing requested	N	N
Observation mode	POINTING	POINTING	Subarray requested	NONE	NONE
Pointing RA	218.707234	218.6740323321951	Alternating exposures requested	N	N
Pointing Dec	35.086386	35.09051956933421	Primary exposure time	0.000000	3.1
Pointing Roll	140.782528	141.0102981036355			
SIM focus pos (mm)	-0.782348	-0.7809083437167272			
SIM defocus (mm)	0	0.001439871863259334			
SIM translation stage pos (mm)	-233.592463	-233.5874344608287			
SIM translation stage offset (mm)	0	-0.005018542100998502			
Observation start time	165765895.184000	165765519.44075			
Observation start date	2003-04-03T14:03:51	2003-04-03T13:58:39			
Observation end time	165770895.184000	165771029.32849			
Observation end date	2003-04-03T15:27:11	2003-04-03T15:30:29			
Read mode	TIMED	TIMED			

## 2.3 Aspect





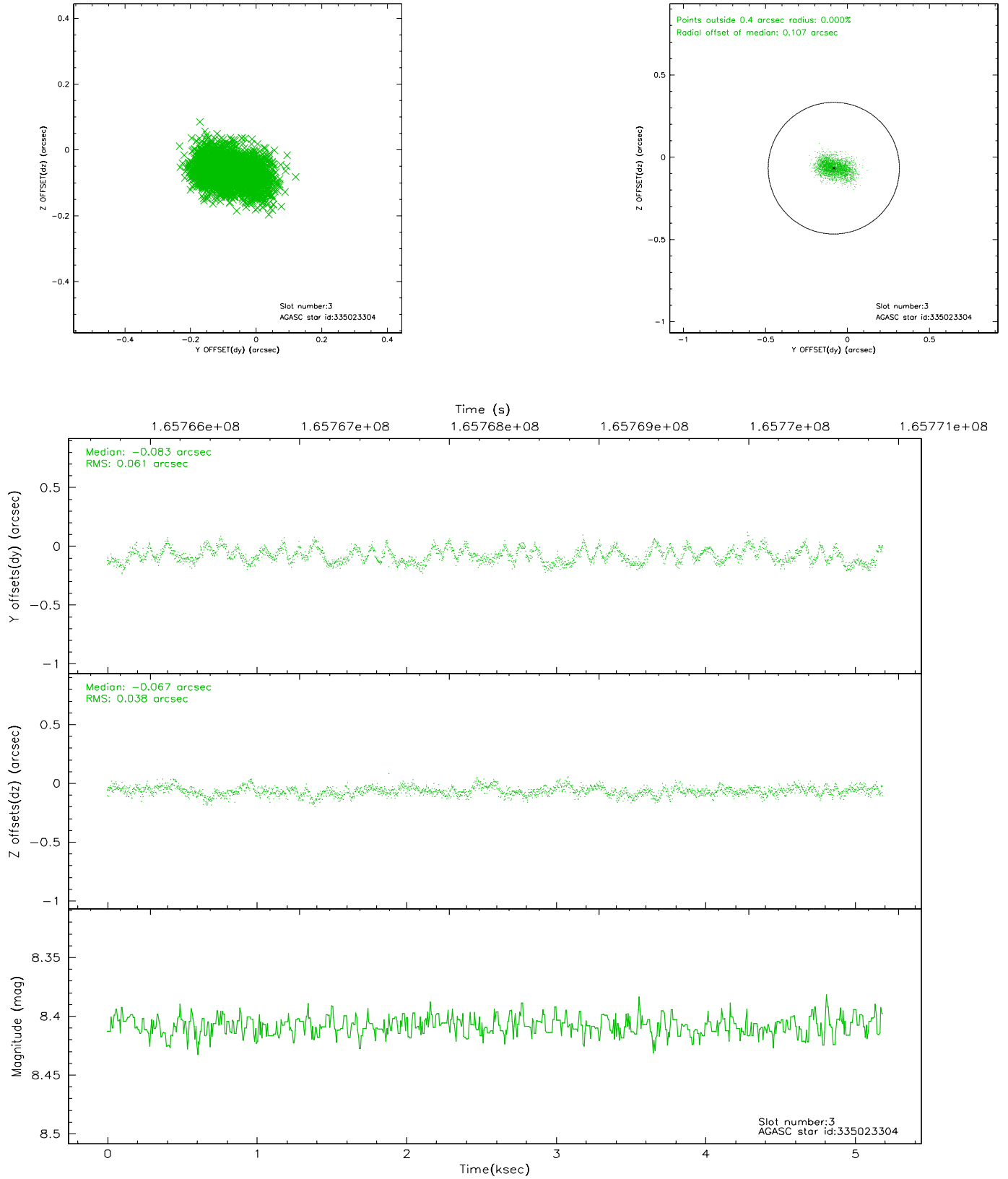
### Slot Statistics

slot	status	id	mag	n_pts	med_dy	med_dz	dr1	dr2	ra	dec	mean_y	mean_z
0	FID	ACIS-I-1	7.25	1265	-0.005	0.020	0.006	0.011	0.000000	0.000000	937.35	-830.05
1	FID	ACIS-I-5	7.24	1266	-0.052	0.046	0.006	0.010	0.000000	0.000000	-1810.11	1066.94
2	FID	ACIS-I-6	7.26	1265	-0.034	0.004	0.006	0.010	0.000000	0.000000	401.65	1712.68
3	GUIDE	335023304	8.41	2528	-0.083	-0.067	0.077	0.124	218.883608	34.686545	-1314.81	784.52
4	GUIDE	335152968	9.76	2529	0.047	0.086	0.102	0.166	219.446087	34.867883	-2183.98	-776.39
5	GUIDE	335414336	8.96	2527	-0.051	0.115	0.080	0.132	218.979022	35.090910	-610.56	-519.99
6	GUIDE	335023248	8.94	2531	-0.007	0.023	0.075	0.114	217.634832	34.944512	2138.94	2383.22
7	GUIDE	335025040	9.93	2530	0.099	-0.161	0.171	0.265	218.601670	34.305240	-1534.28	2377.72

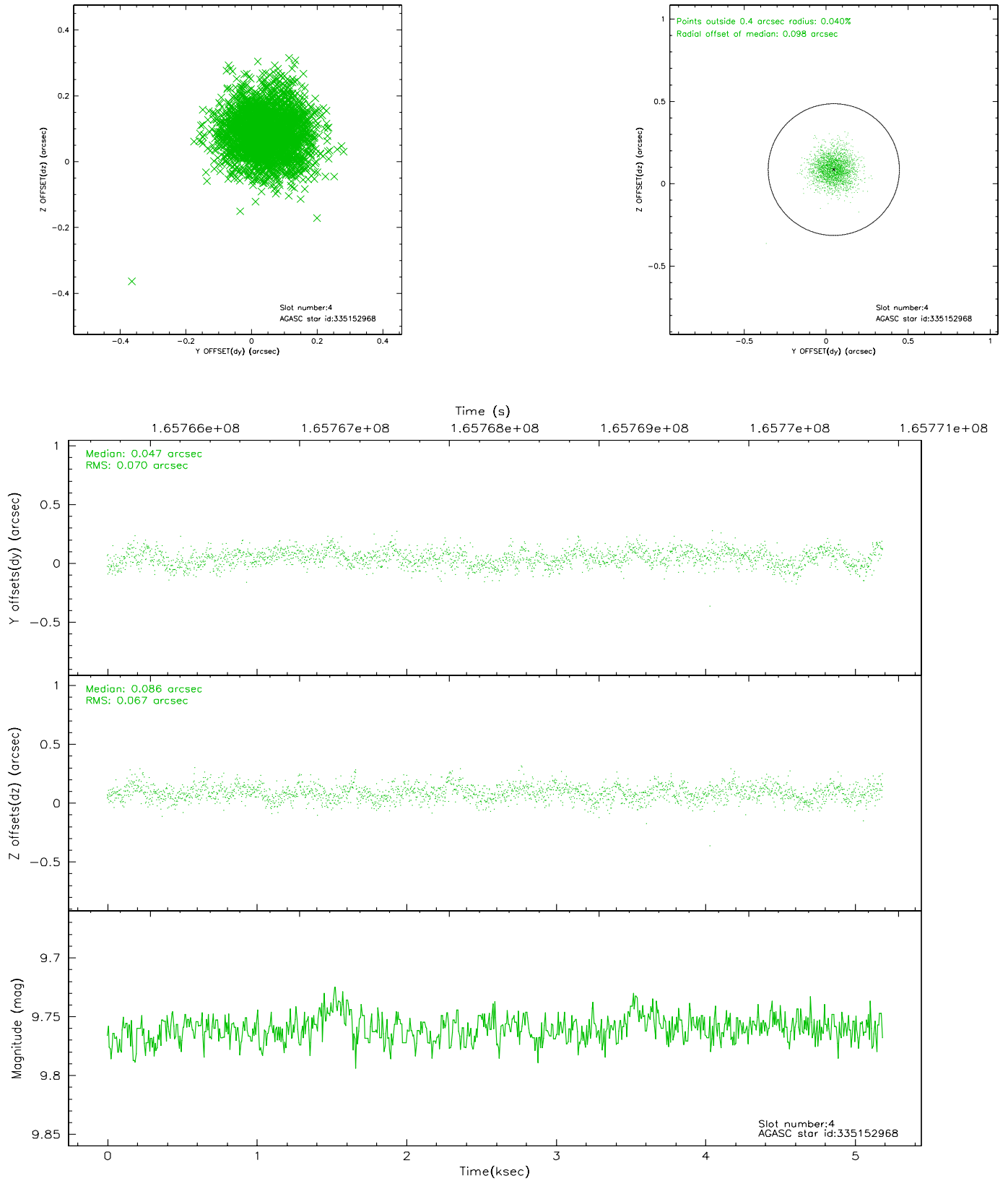


## 2.4 Star Slots

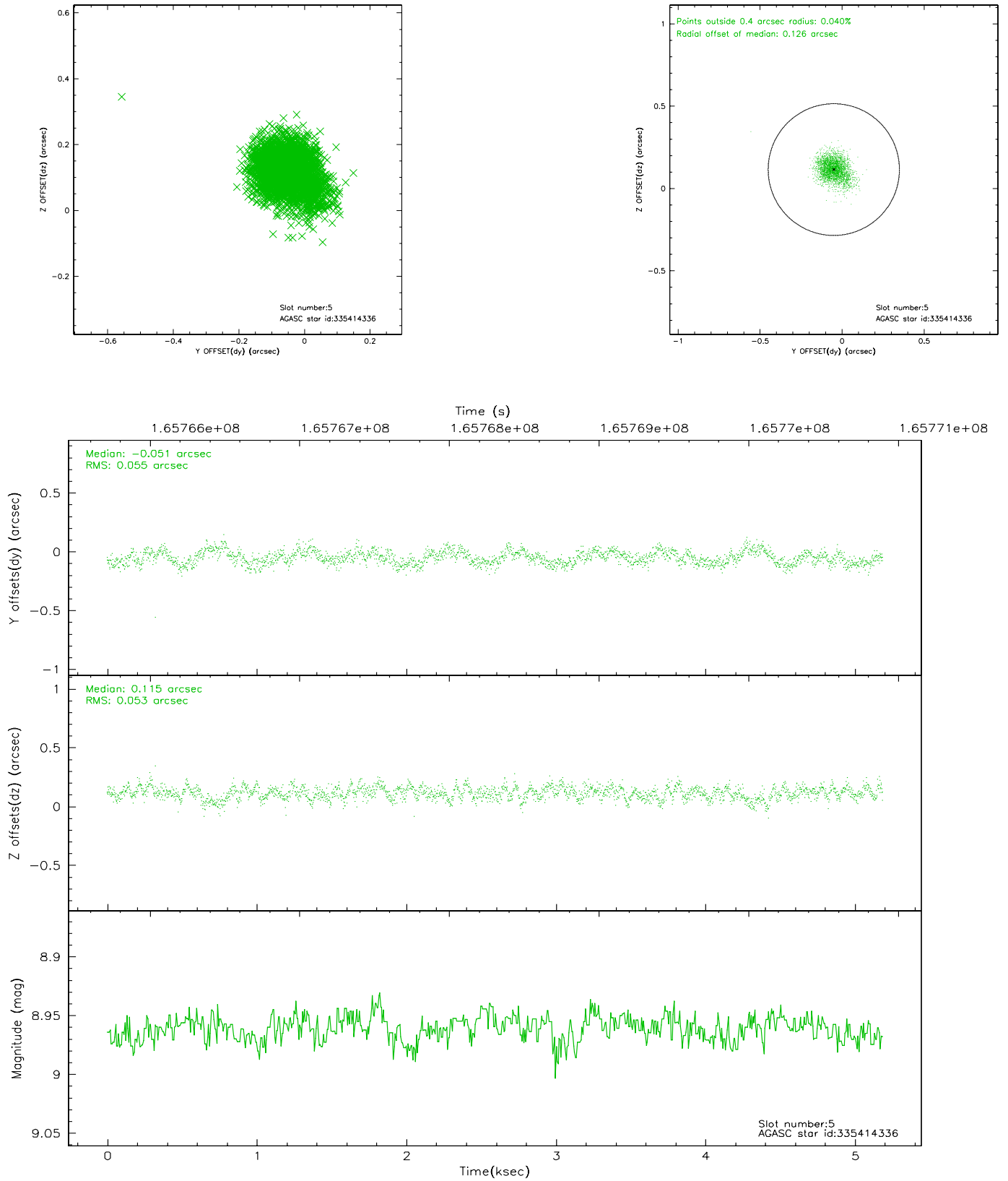
### 2.4.1 Slot 3



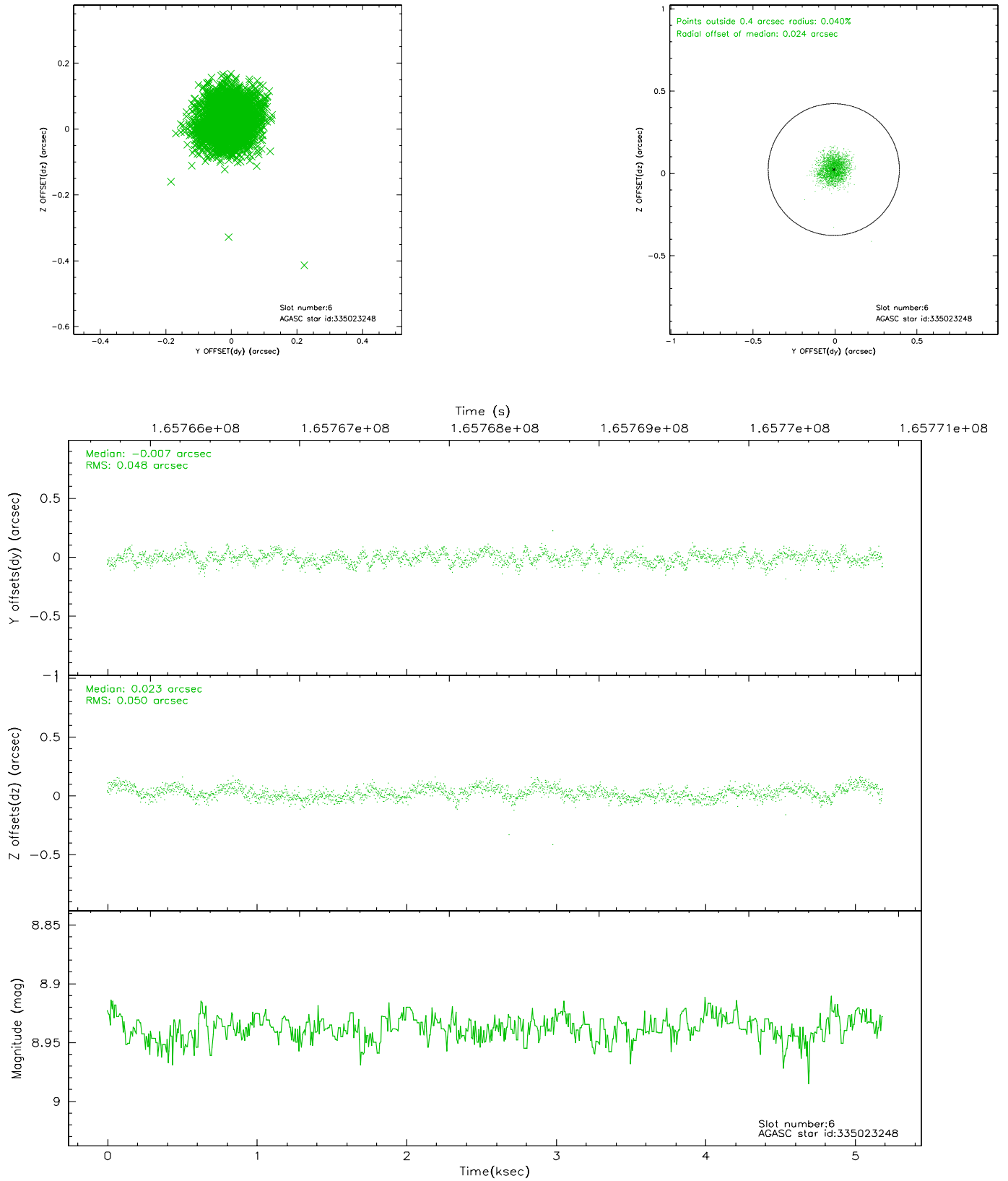
## 2.4.2 Slot 4



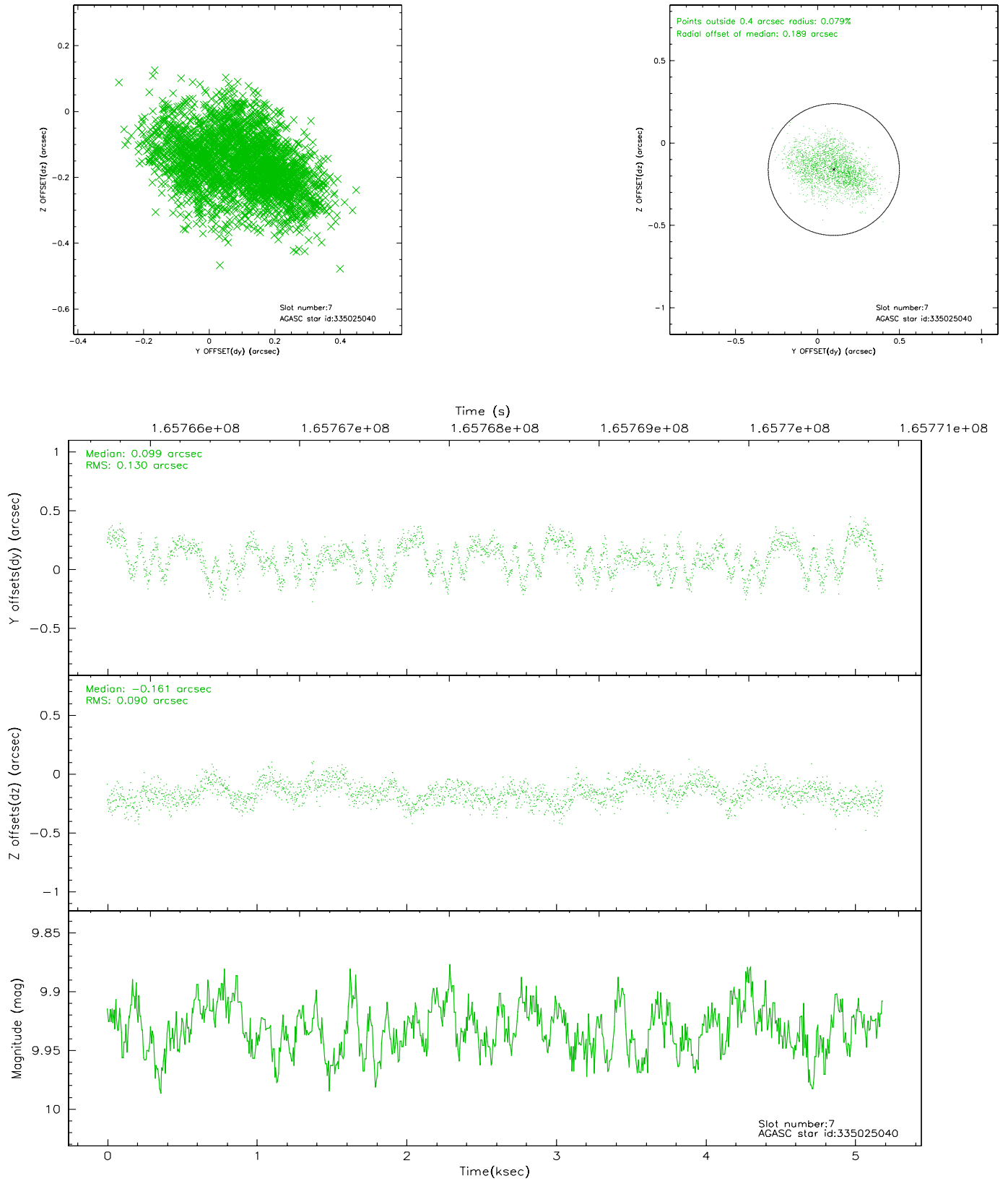
### 2.4.3 Slot 5



## 2.4.4 Slot 6

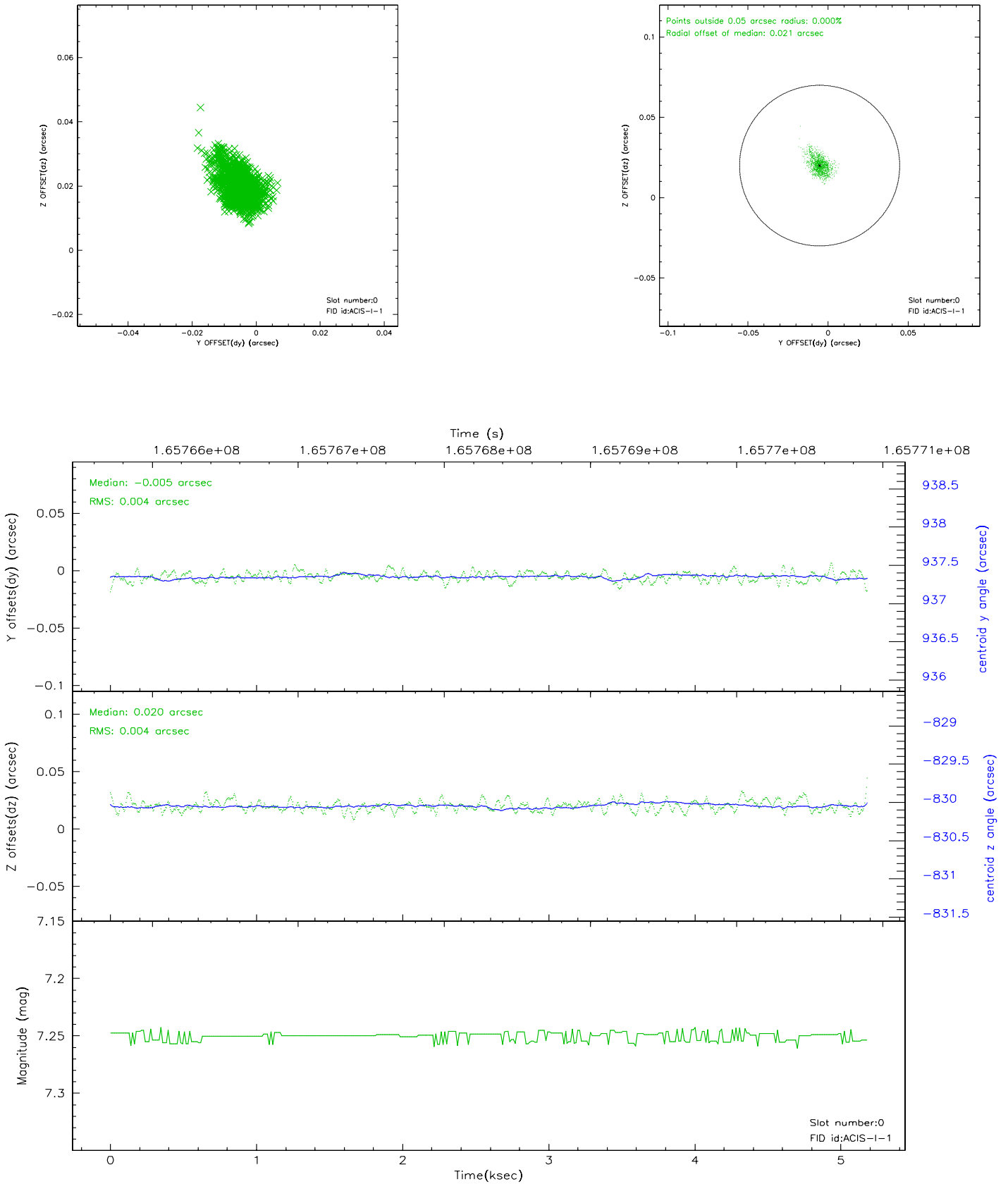


## 2.4.5 Slot 7

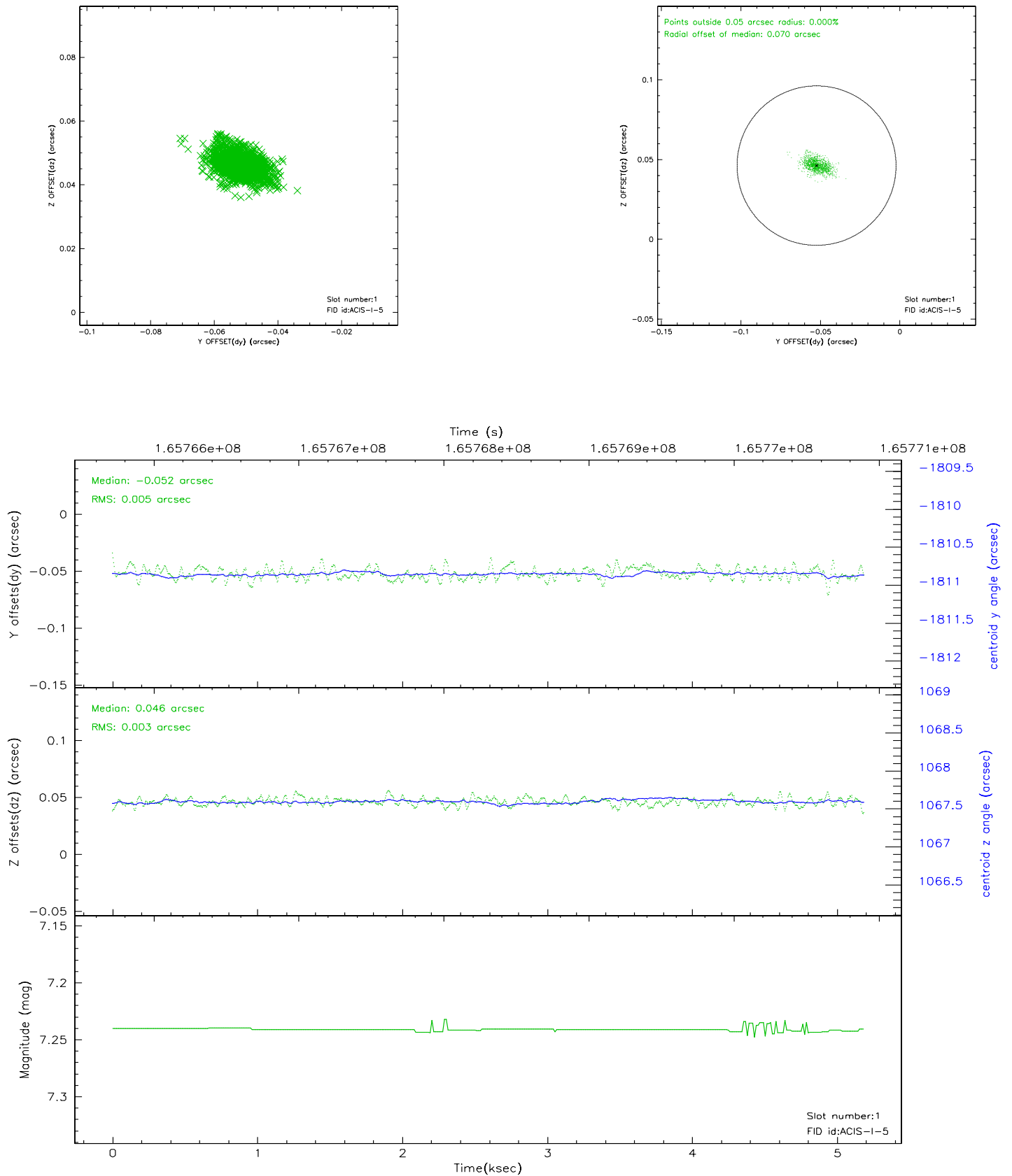


## 2.5 FID Slots

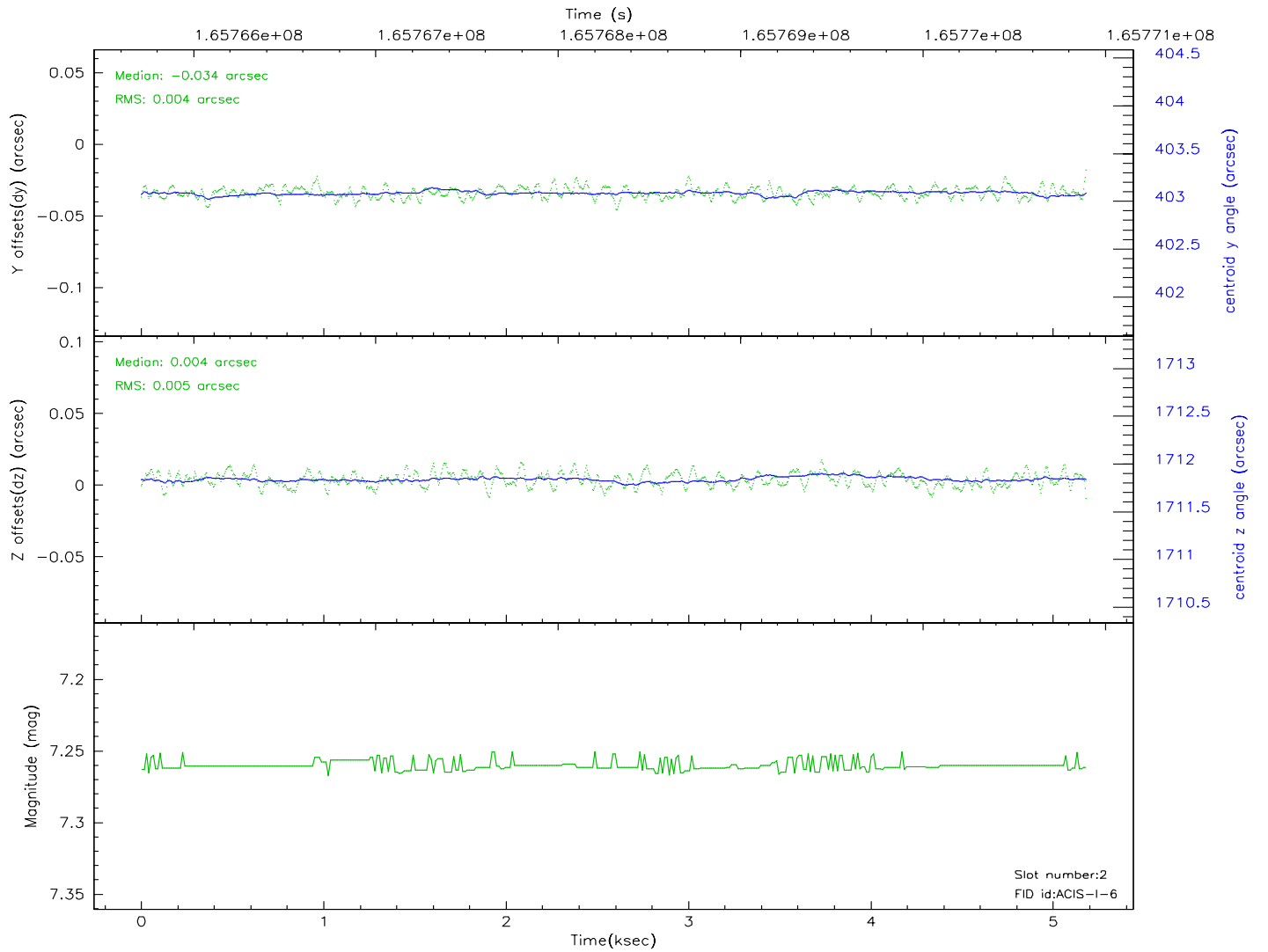
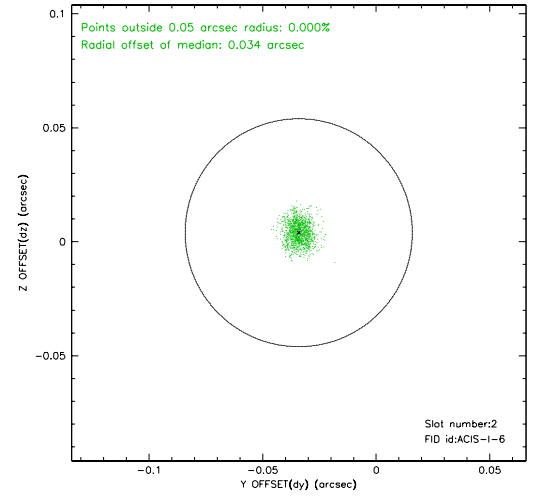
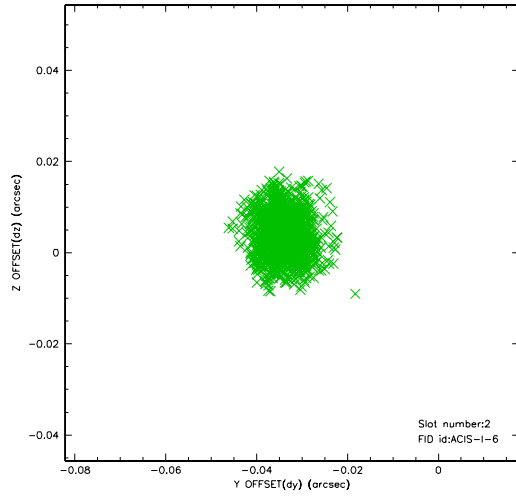
### 2.5.1 Slot 0



## 2.5.2 Slot 1

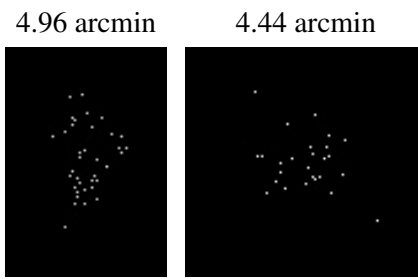


### 2.5.3 Slot 2





### 3 Point Sources



## A Summary

### A.1 Status

V&V Scientist	Jen Lauer
V&V Date (YYYY-MM-DD)	2006.07.30
V&V Edition	1
V&V Disposition and Status	OK
V&V Charge Time	4.777

### A.2 Comments