

V&V Reference Report

L2 ASCDS Version : 7.6.9

Observation 3586 - L2 Version 001
Chandra X-Ray Center

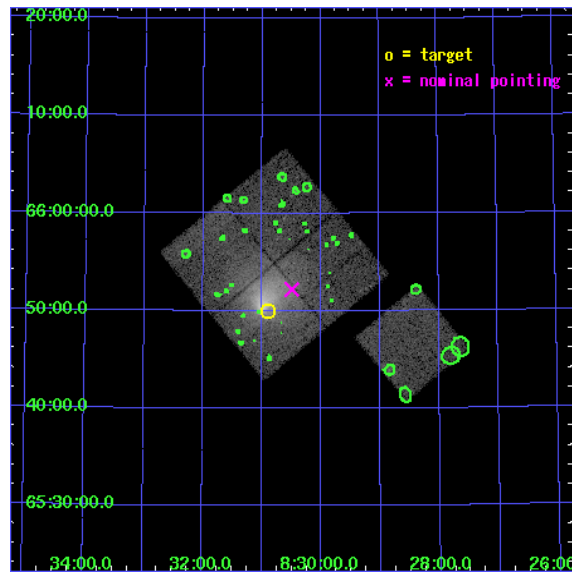
L2 Processing Date : Oct 16 2006

Contents

1	Front	2
2	OBI	3
2.1	OBI	3
2.1.1	Images	3
2.1.2	Bias	3
2.1.3	Parameters	4
2.1.4	Events	4
2.2	Compared Parameters	5
2.3	Aspect	6
2.4	Star Slots	9
2.4.1	Slot 3	9
2.4.2	Slot 4	10
2.4.3	Slot 5	11
2.4.4	Slot 6	12
2.4.5	Slot 7	13
2.5	FID Slots	14
2.5.1	Slot 0	14
2.5.2	Slot 1	15
2.5.3	Slot 2	16
3	Point Sources	17
A	Summary	18
A.1	Status	18
A.2	Comments	18

1 Front

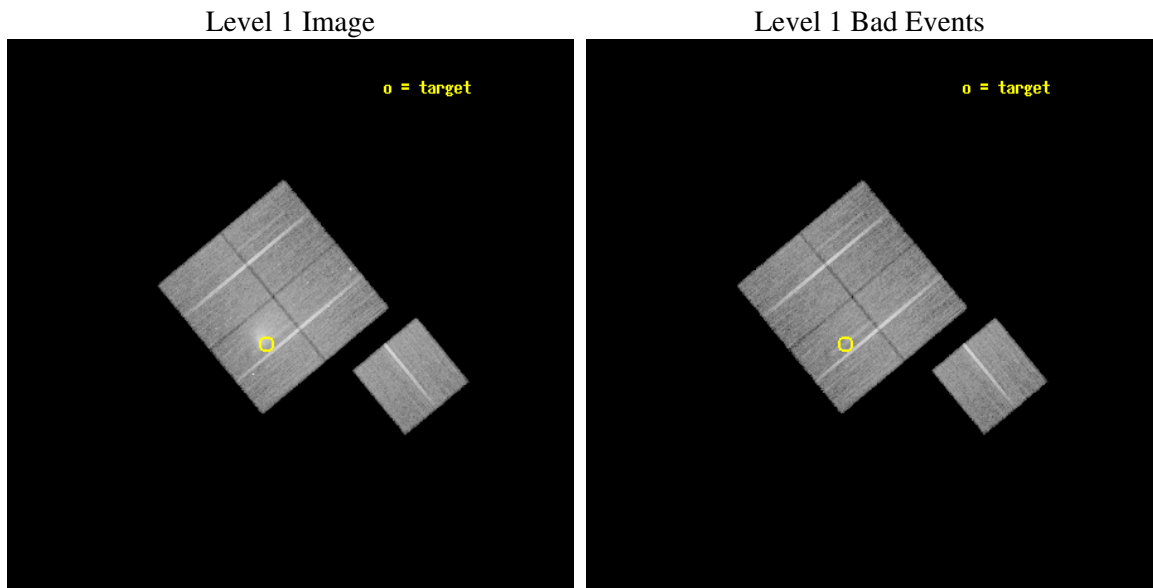
seq_num	800307
obs_id	3586
title	X-RAY/SZ DETERMINATION OF COSMOLOGICAL PARAMETERS
observer	DR. LEON VANSPEYBROECK
object	A665
dtcycle	0
cycle	P
ra_targ	127.722083
dec_targ	65.834
ra_nom	127.62306505835
dec_nom	65.870186265087
roll_nom	140.36591671852
revision	2
ontime	30116.458961874
livetime	29722.965254123
ontime0	30113.318001568
ontime1	30113.317941815
ontime2	30119.599942088
ontime3	30116.458961874
ontime6	30116.458961844
l2events	114399



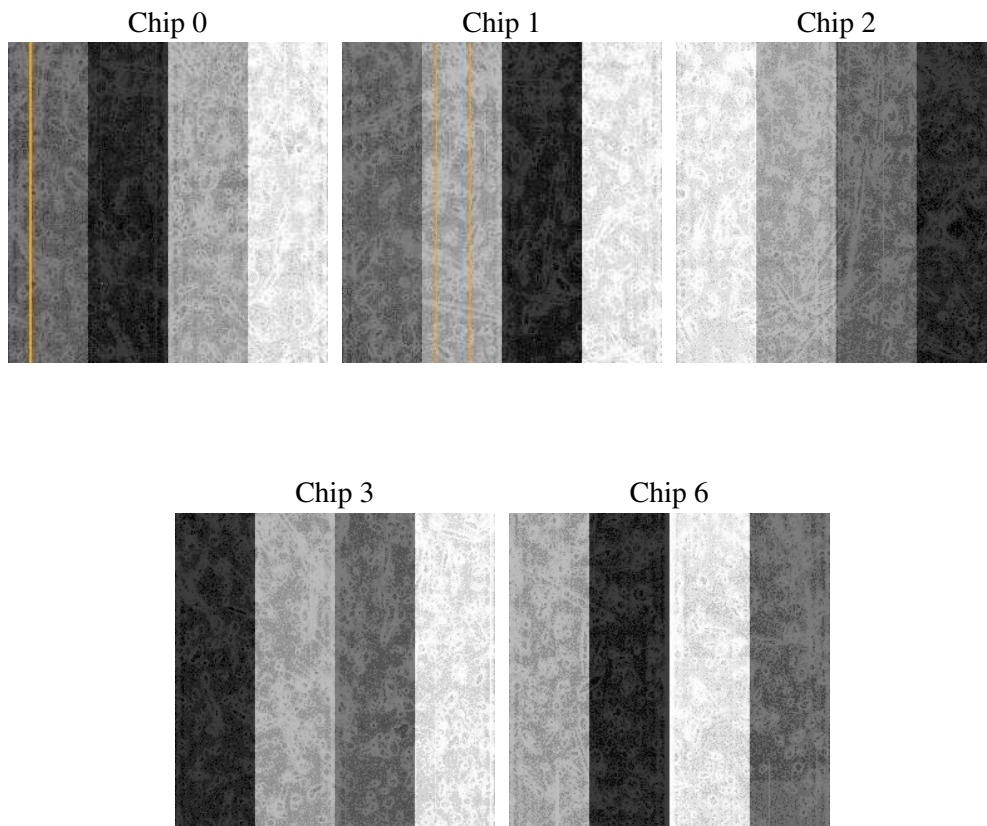
2 OBI

2.1 OBI

2.1.1 Images



2.1.2 Bias



2.1.3 Parameters

obi_num	1
ascdsver	7.6.9
caldbver	3.2.3
date	2006-10-16T04:47:08
revision	2

sched_exp_time	30000.000000
ontime	30122.270898789
ontime0	30119.129938483
ontime1	30119.12987873
ontime2	30125.411879003
ontime3	30122.270898789
ontime6	30122.270898759
l1events	820998

2.1.4 Events

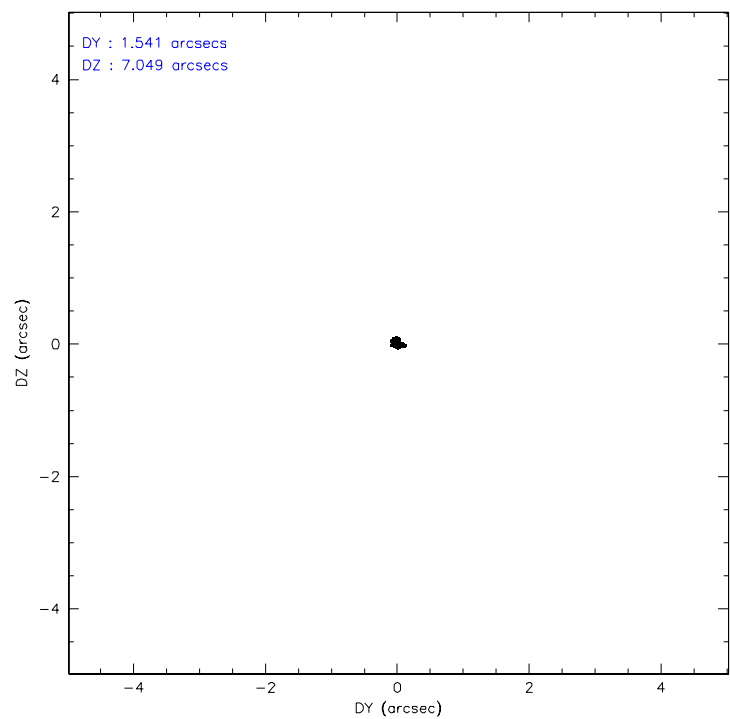
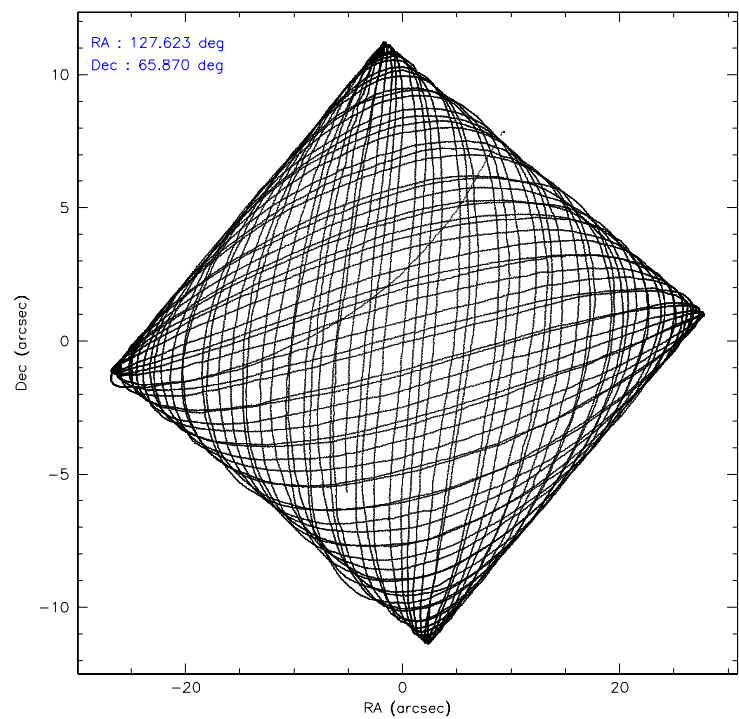
	ccd 0	ccd 1	ccd 2	ccd 3	ccd 6
level 1 events	142622	152718	168891	195674	161093
rejected events	125747	129598	148551	143040	144912
rejected %	88%	84%	87%	73%	89%

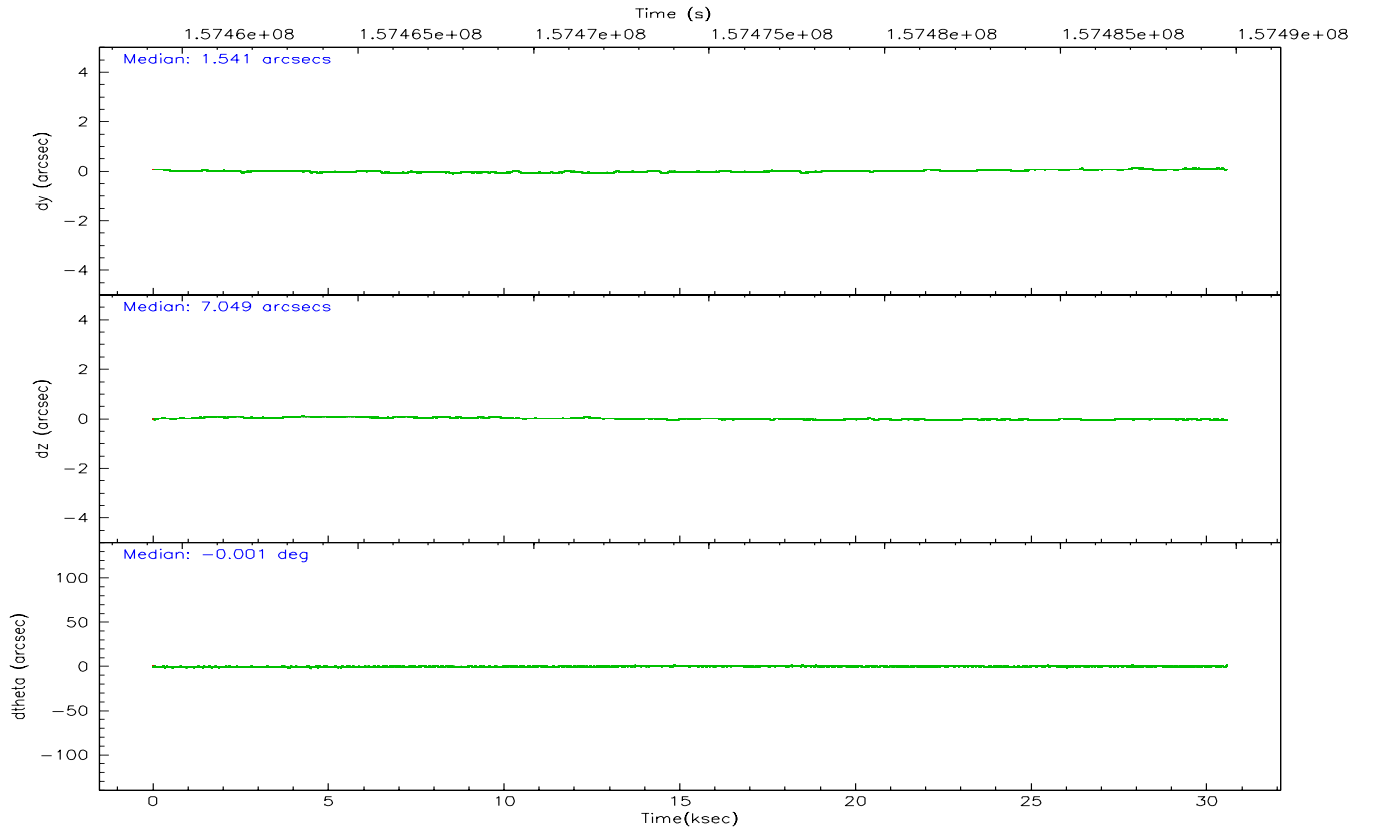
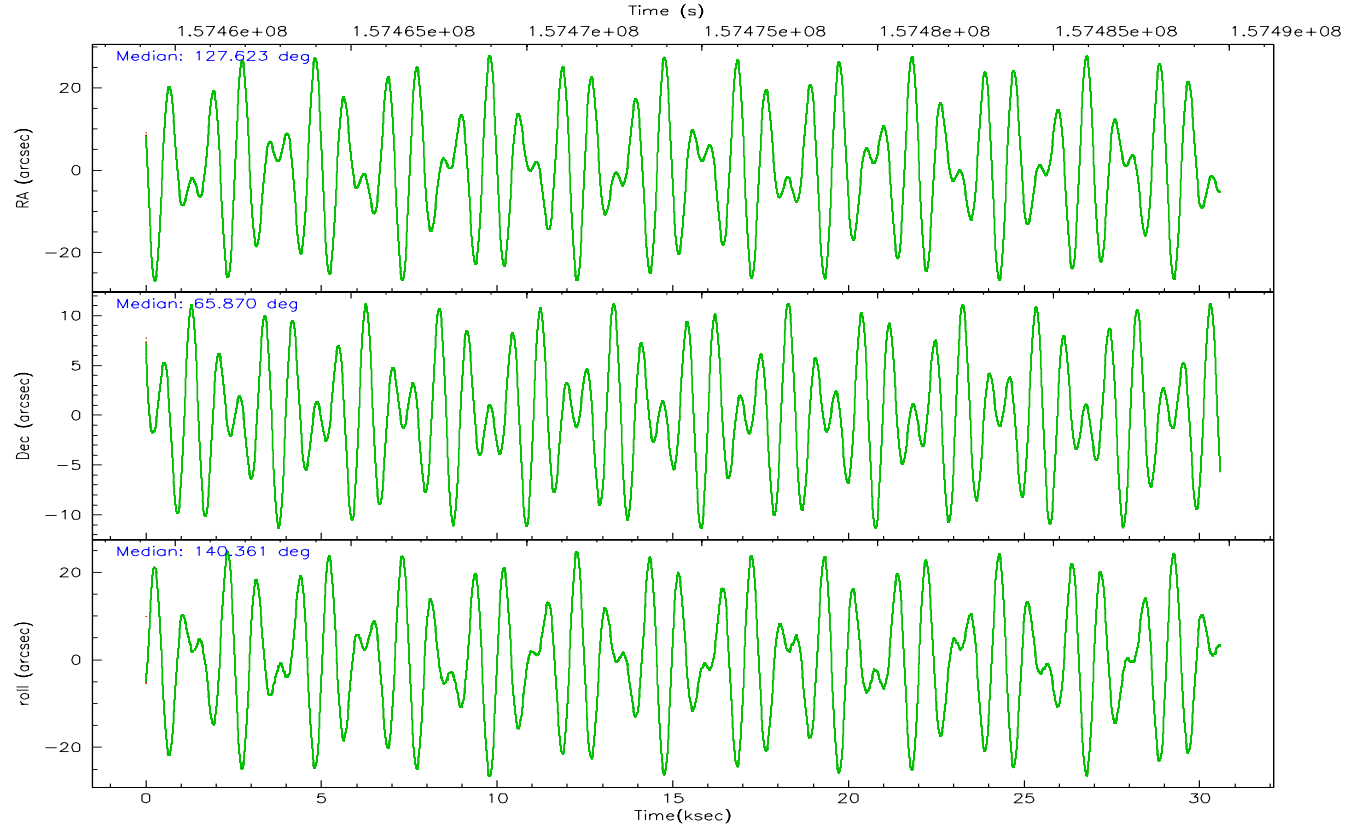
	ccd 0	ccd 1	ccd 2	ccd 3	ccd 6
grade 0 events	6641	10960	9732	36408	6088
	4%	7%	5%	18%	3%
grade 1 events	89	78	100	210	52
	0%	0%	0%	0%	0%
grade 2 events	3665	4247	3885	6797	3255
	2%	2%	2%	3%	2%
grade 3 events	1918	2146	1982	2855	1810
	1%	1%	1%	1%	1%
grade 4 events	1750	2116	1855	2785	1737
	1%	1%	1%	1%	1%
grade 5 events	5193	5622	5154	6198	5810
	3%	3%	3%	3%	3%
grade 6 events	2906	3655	2890	3800	3295
	2%	2%	1%	1%	2%
grade 7 events	120460	123894	143293	136621	139046
	84%	81%	84%	69%	86%

2.2 Compared Parameters

Parameter	Planned	Actual	Parameter	Planned	Actual
Instrument	ACIS	ACIS	Obspar format version number	6	6
Detector	ACIS-01236	ACIS-01236	Obspar file type	PREDICTED	ACTUAL
Grating	NONE	NONE	Obspar update status	NONE	UPDATED
Data mode	VFAINT	VFAINT	Number of optional ACIS chips dropped	0	0
Observation mode	POINTING	POINTING	On-chip summing requested	N	N
Pointing RA	127.689171	127.6230650583499	Subarray requested	NONE	NONE
Pointing Dec	65.865696	65.87018626508672	Alternating exposures requested	N	N
Pointing Roll	140.096893	140.3659167185178	Primary exposure time	0.000000	3.1
SIM focus pos (mm)	-0.782348	-0.7809083437167272			
SIM defocus (mm)	0	0.001439871863259334			
SIM translation stage pos (mm)	-225.840463	-225.8433433320239			
SIM translation stage offset (mm)	-7.752	-7.749109670905796			
Observation start time	157459751.184000	157458596.21692			
Observation start date	2002-12-28T10:48:07	2002-12-28T10:29:56			
Observation end time	157489751.184000	157490064.23074			
Observation end date	2002-12-28T19:08:07	2002-12-28T19:14:24			
Read mode	TIMED	TIMED			

2.3 Aspect



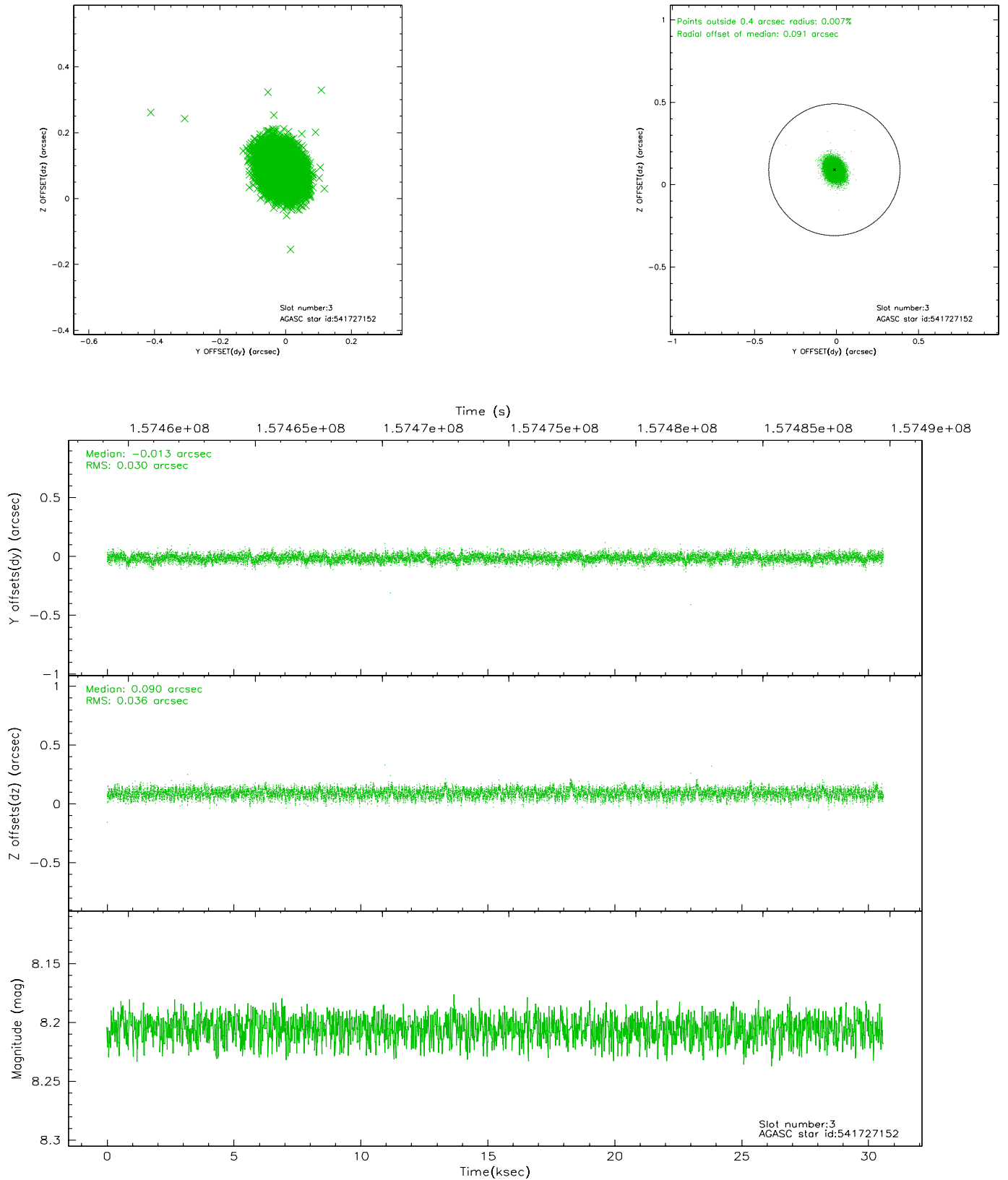


Slot Statistics

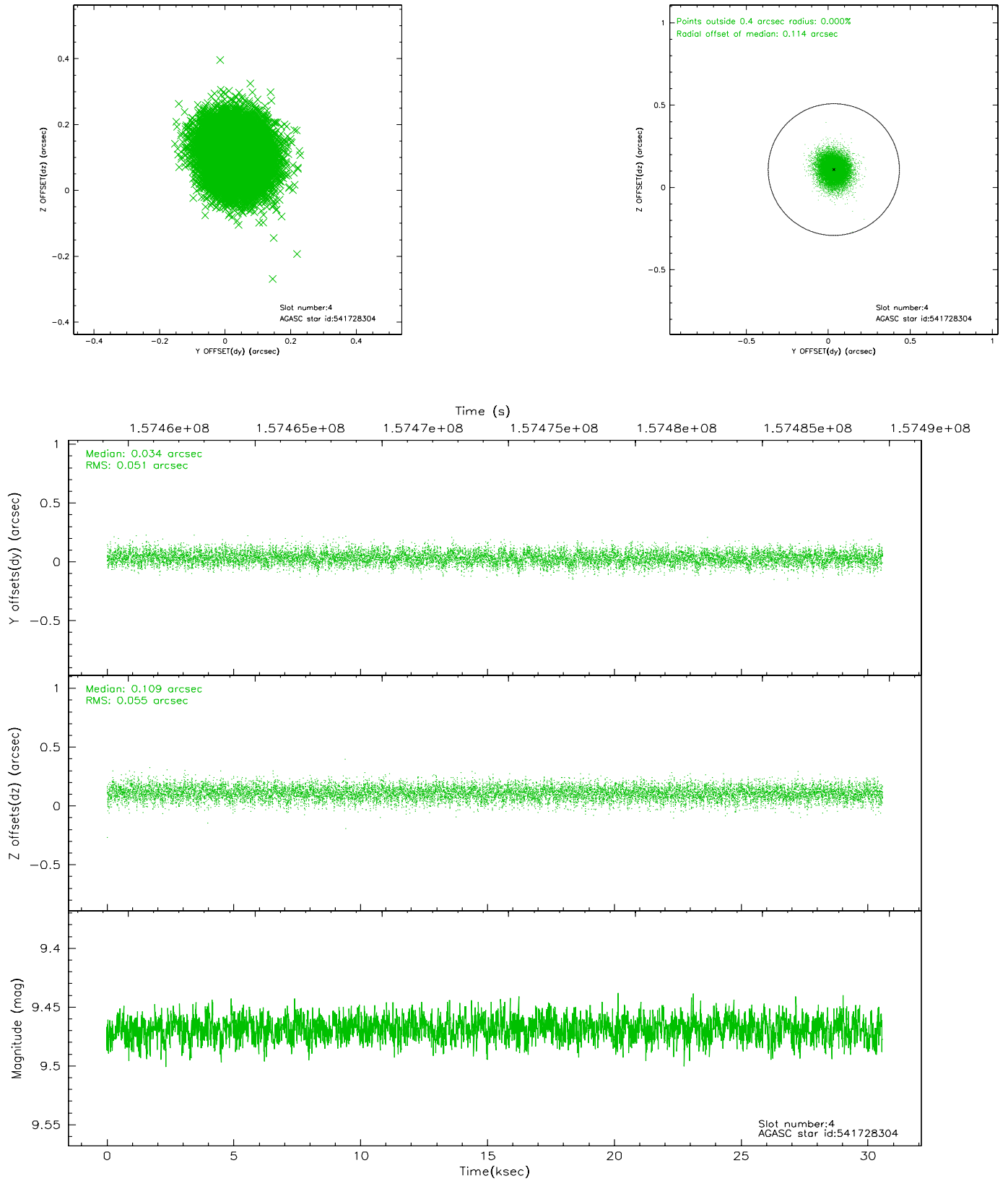
slot	status	id	mag	n_pts	med_dy	med_dz	dr1	dr2	ra	dec	mean_y	mean_z
0	FID	ACIS-I-1	7.23	7458	0.067	-0.022	0.007	0.012	0.000000	0.000000	938.19	-989.57
1	FID	ACIS-I-5	7.22	7458	-0.141	0.092	0.007	0.012	0.000000	0.000000	-1810.05	908.02
2	FID	ACIS-I-6	7.26	7457	-0.017	0.000	0.008	0.013	0.000000	0.000000	403.62	1552.48
3	GUIDE	541727152	8.21	14908	-0.013	0.090	0.050	0.080	127.263195	66.213821	1279.87	-566.06
4	GUIDE	541728304	9.47	14904	0.034	0.109	0.080	0.130	129.452175	65.893478	-1900.53	-1767.46
5	GUIDE	541728480	8.43	14909	-0.022	-0.066	0.062	0.104	125.879819	65.741108	1789.51	2031.05
6	GUIDE	541729480	9.07	14895	0.024	-0.040	0.071	0.116	126.985305	65.880968	833.45	617.75
7	GUIDE	541730880	8.09	14915	-0.021	-0.095	0.047	0.076	127.501712	65.260390	-1181.25	1852.35

2.4 Star Slots

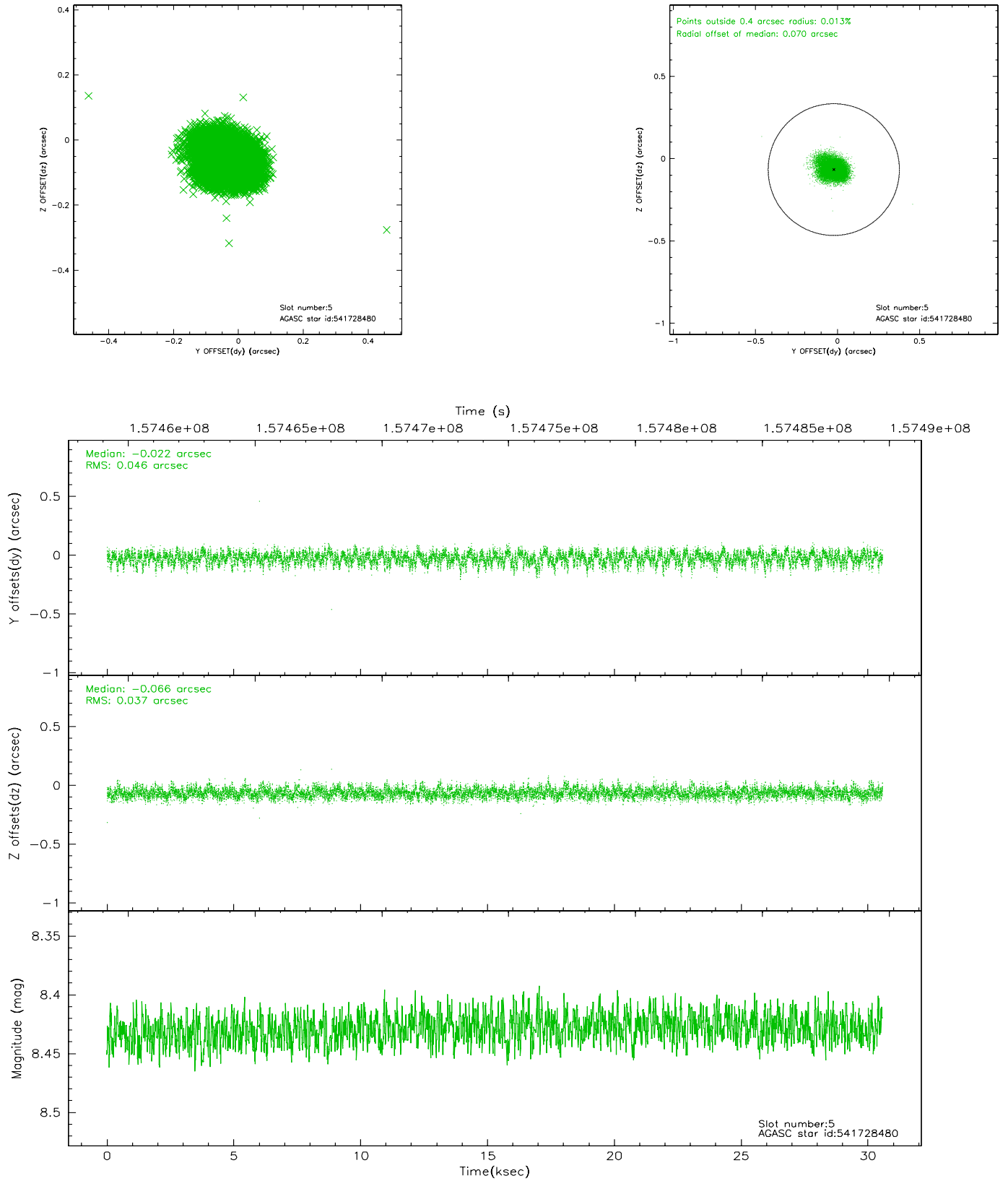
2.4.1 Slot 3



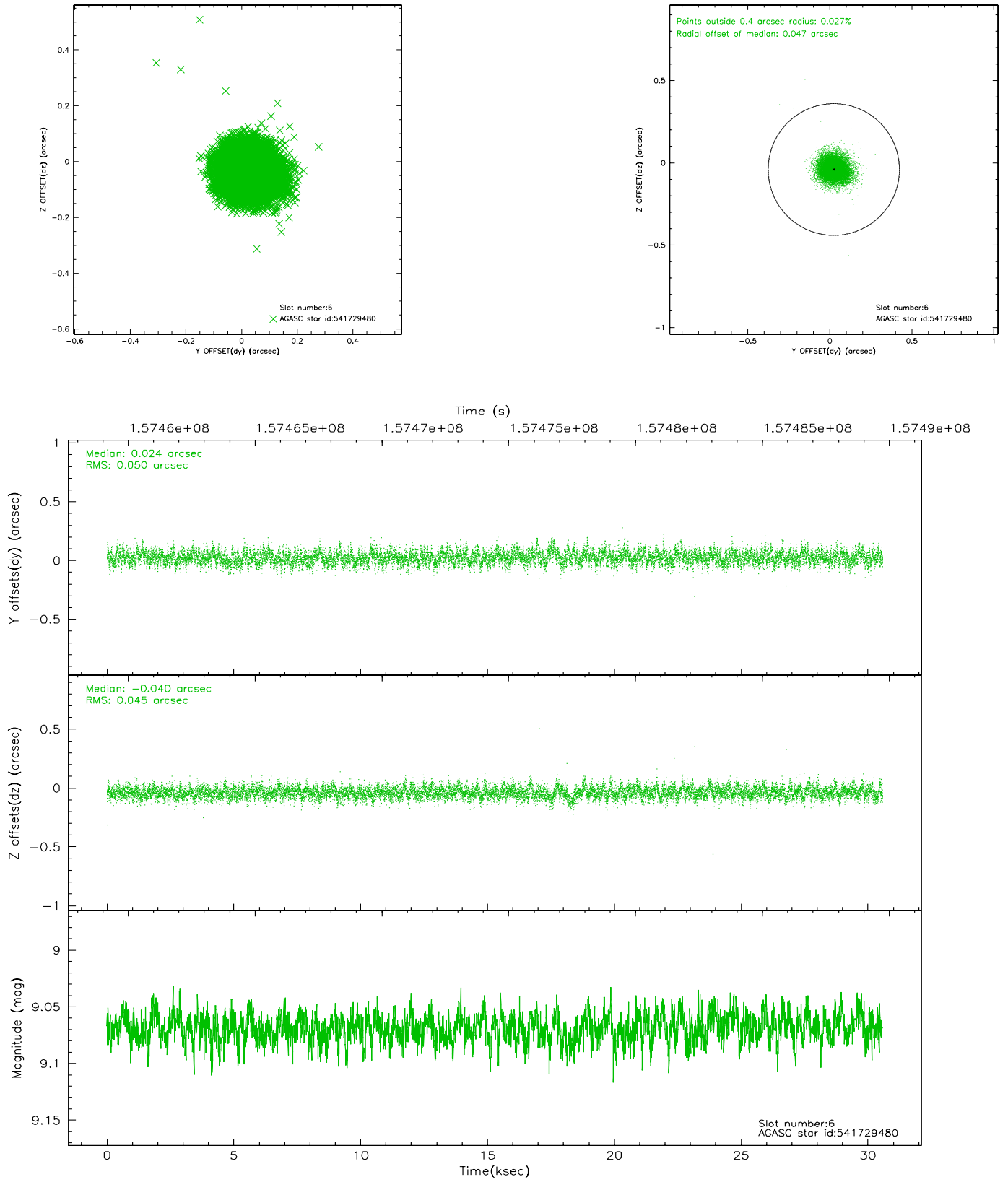
2.4.2 Slot 4



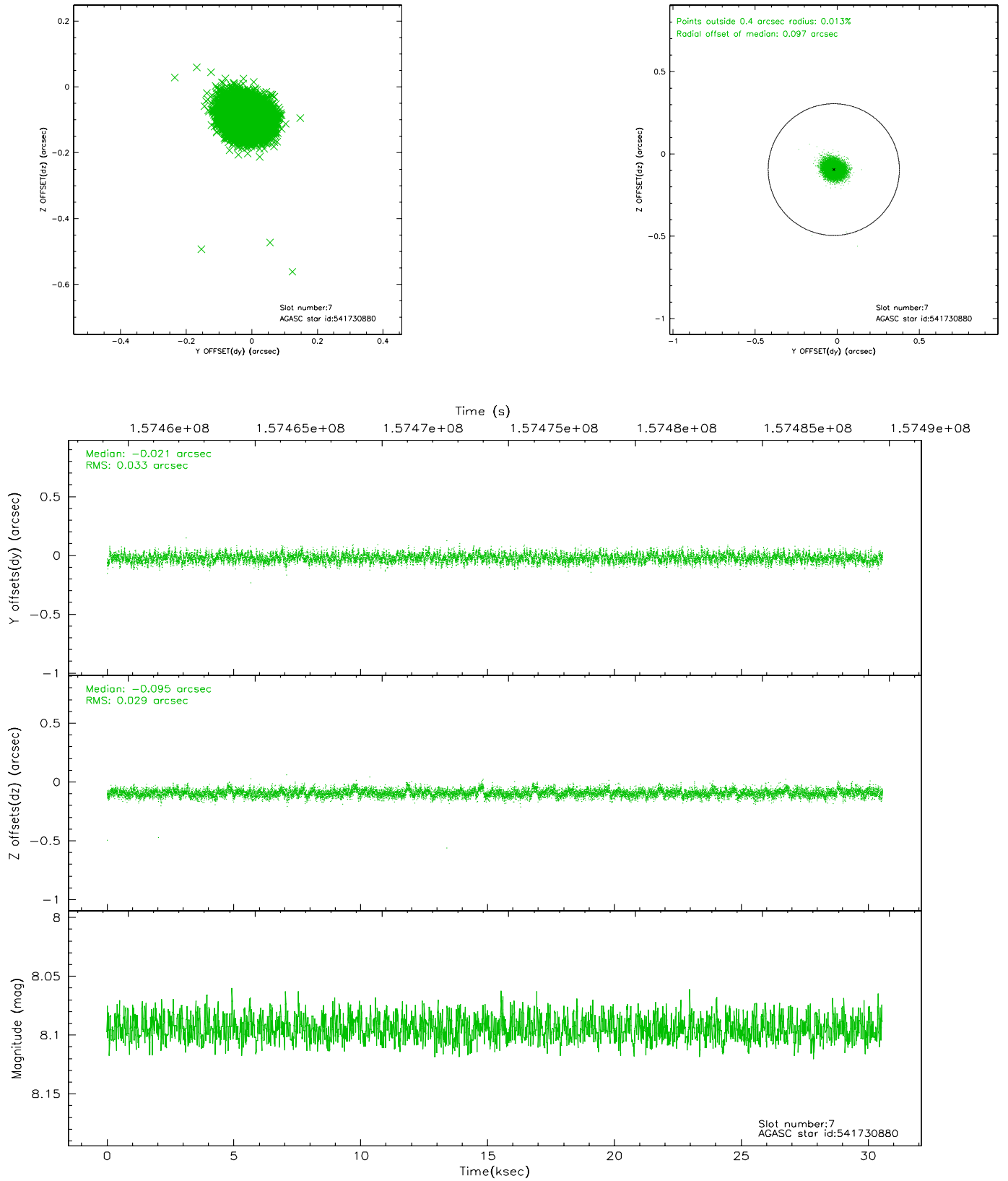
2.4.3 Slot 5



2.4.4 Slot 6

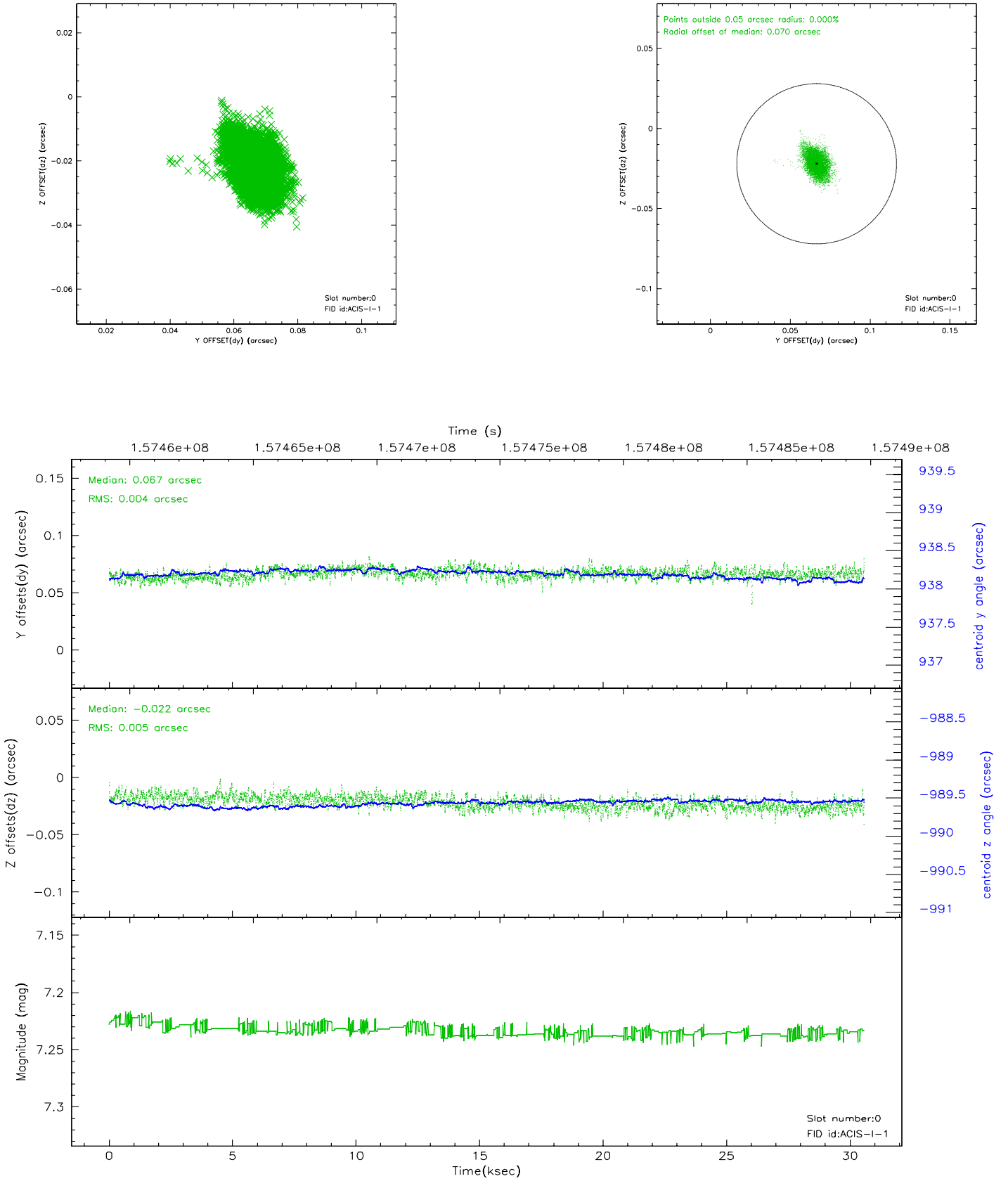


2.4.5 Slot 7

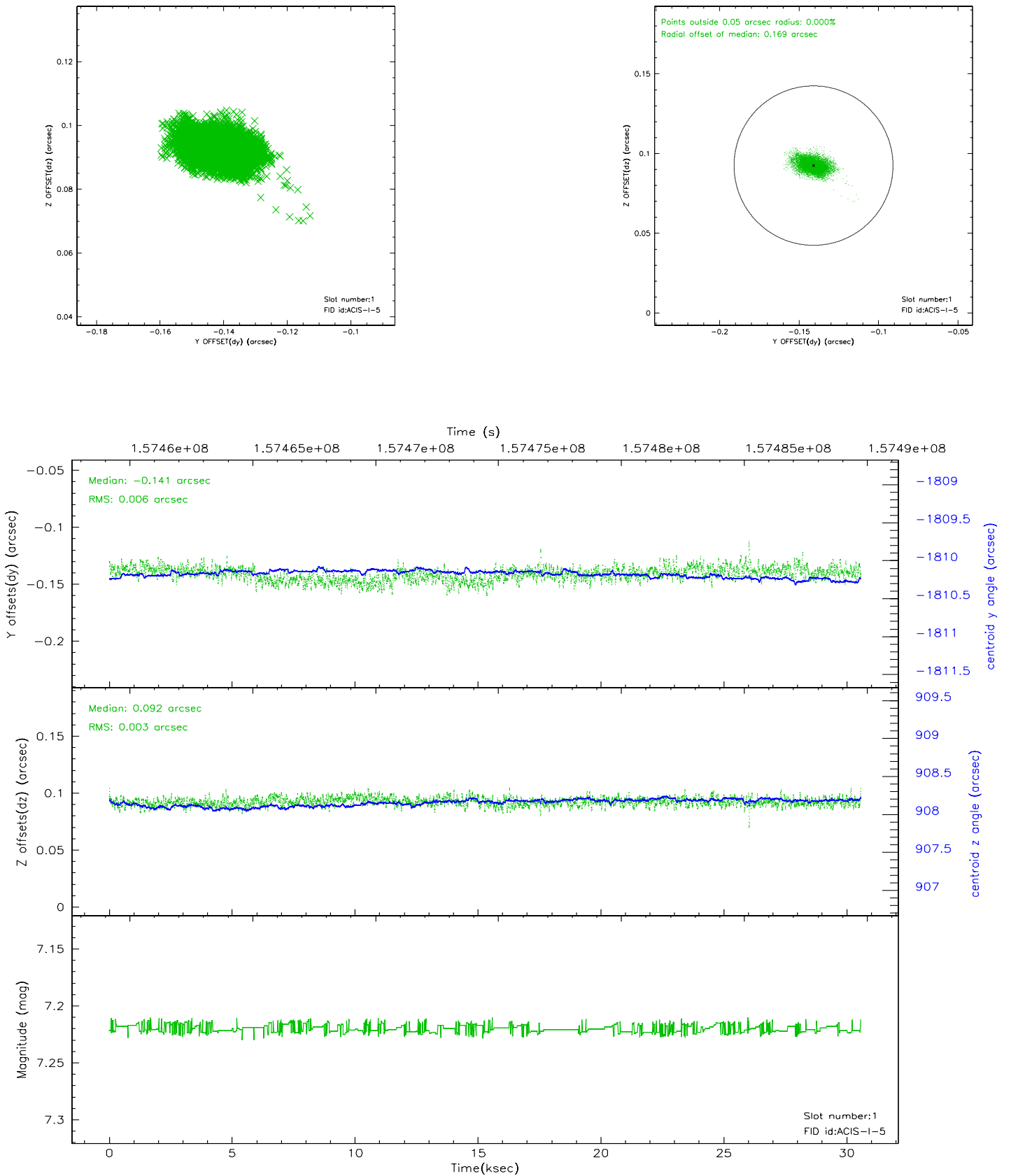


2.5 FID Slots

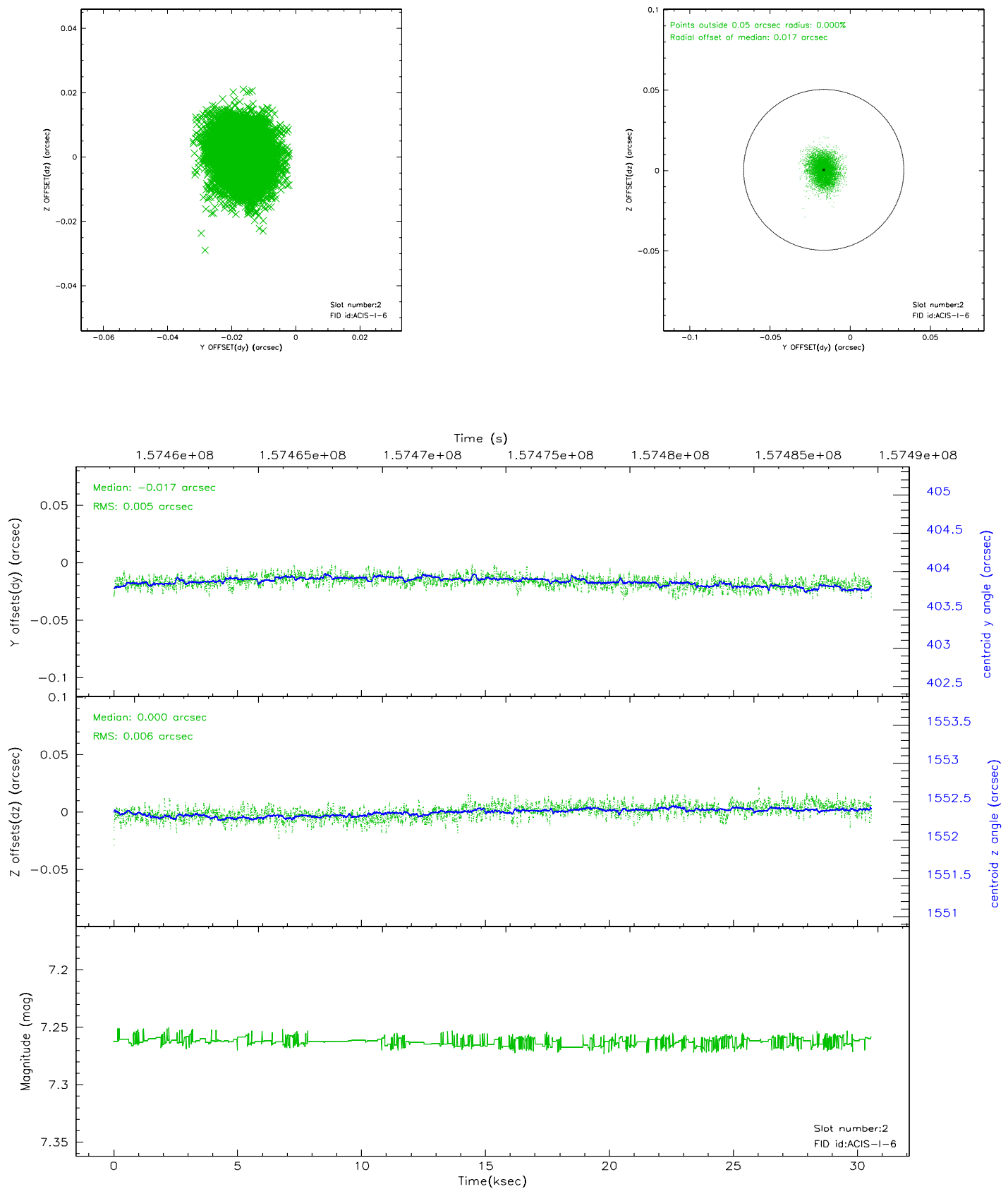
2.5.1 Slot 0



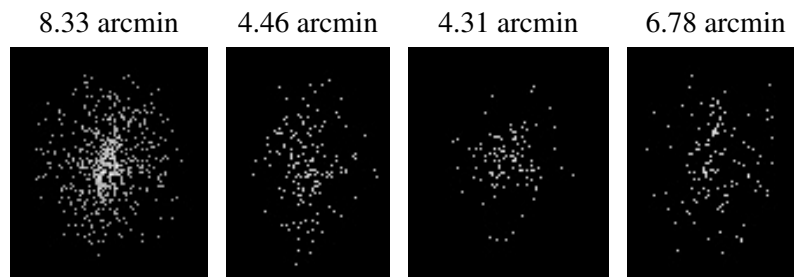
2.5.2 Slot 1



2.5.3 Slot 2



3 Point Sources



A Summary

A.1 Status

V&V Scientist	Beth Sundheim
V&V Date (YYYY-MM-DD)	2006.10.16
V&V Edition	1
V&V Disposition and Status	OK
V&V Charge Time	30.119

A.2 Comments