

# V&V Reference Report

## L2 ASCDS Version : 7.6.8

Observation 3576 - L2 Version 001  
Chandra X-Ray Center

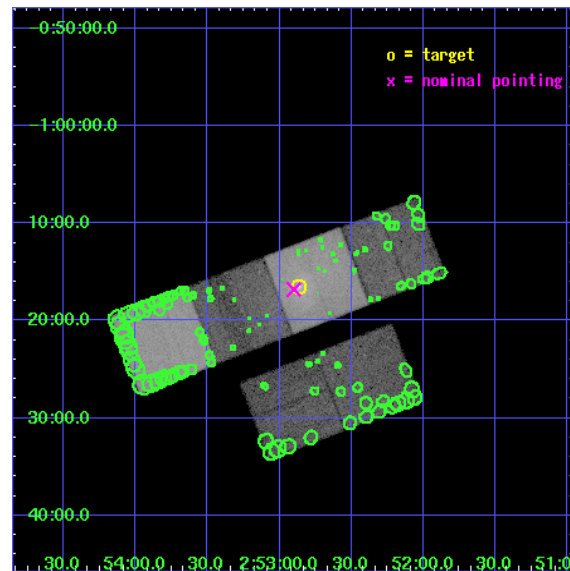
L2 Processing Date : Jun 28 2006

## Contents

<b>1</b>	<b>Front</b>	<b>2</b>
<b>2</b>	<b>OBI</b>	<b>3</b>
2.1	OBI . . . . .	3
2.1.1	Images . . . . .	3
2.1.2	Bias . . . . .	3
2.1.3	Parameters . . . . .	4
2.1.4	Events . . . . .	4
2.2	Compared Parameters . . . . .	5
2.3	Aspect . . . . .	6
2.4	Star Slots . . . . .	9
2.4.1	Slot 3 . . . . .	9
2.4.2	Slot 4 . . . . .	10
2.4.3	Slot 5 . . . . .	11
2.4.4	Slot 6 . . . . .	12
2.4.5	Slot 7 . . . . .	13
2.5	FID Slots . . . . .	14
2.5.1	Slot 0 . . . . .	14
2.5.2	Slot 1 . . . . .	15
2.5.3	Slot 2 . . . . .	16
<b>3</b>	<b>Point Sources</b>	<b>17</b>
<b>A</b>	<b>Summary</b>	<b>18</b>
A.1	Status . . . . .	18
A.2	Comments . . . . .	18

# 1 Front

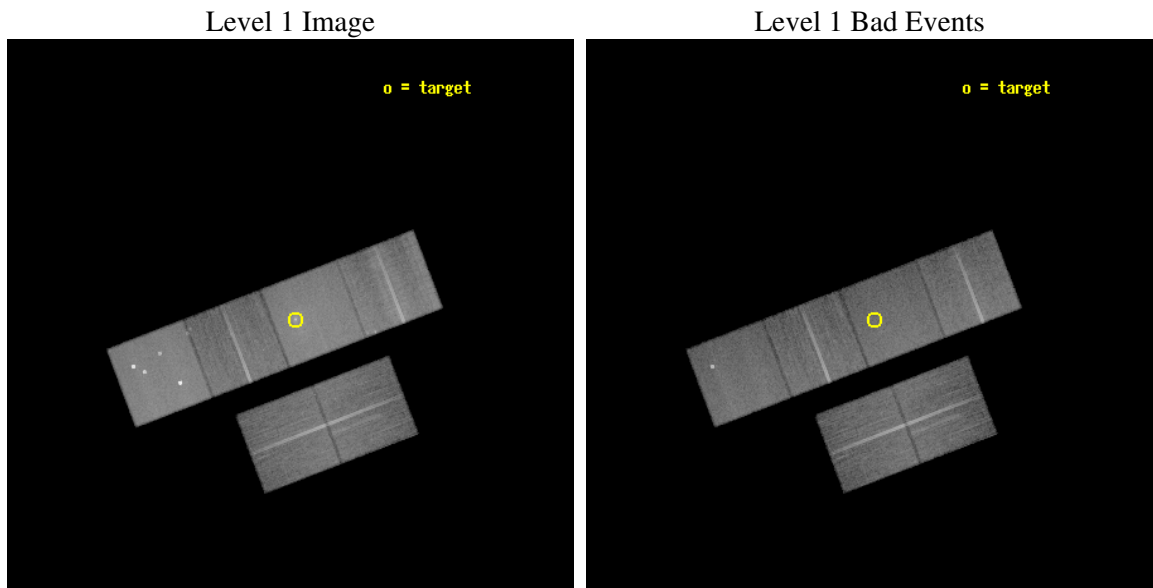
seq_num	800297
obs_id	3576
title	SELF-INTERACTING DARK MATTER HALOS ON SUB-CLUSTER SCALES
observer	Professor Gordon Garmire
object	NGC 1132
dtcycle	0
cycle	P
ra_targ	43.216667
dec_targ	-1.274889
ra_nom	43.224934078303
dec_nom	-1.2798819615034
roll_nom	338.98496587736
revision	2
ontime	40166.399850368
livetime	39657.788710161
ontime2	40166.399850368
ontime3	40166.399850368
ontime5	40166.399850368
ontime6	40166.399850368
ontime7	40166.399850368
ontime8	40166.399850368
l2events	417414



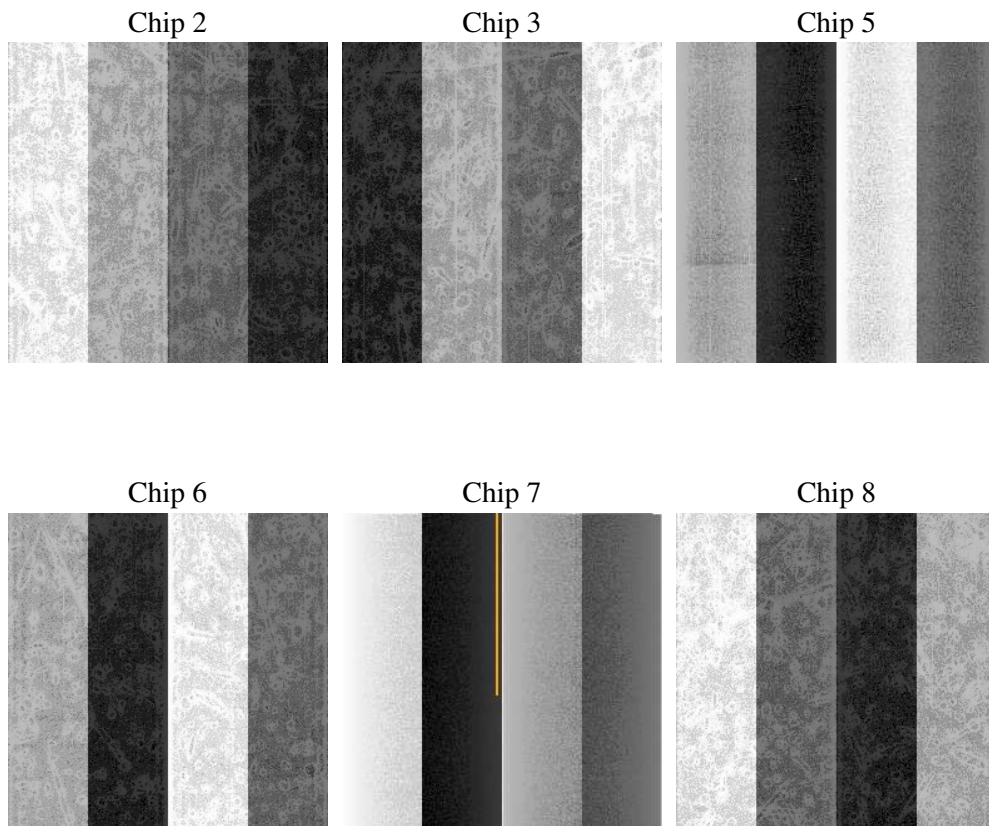
## 2 OBI

### 2.1 OBI

#### 2.1.1 Images



#### 2.1.2 Bias



### 2.1.3 Parameters

obi_num	0
ascdsver	7.6.8
caldsver	3.2.2
date	2006-06-28T02:14:03
revision	2

sched_exp_time	40000.000000
ontime	40194.995982409
ontime2	40194.995982409
ontime3	40194.995982409
ontime5	40194.995982409
ontime6	40194.995982409
ontime7	40194.995982409
ontime8	40194.995982409
l1events	1615732

### 2.1.4 Events

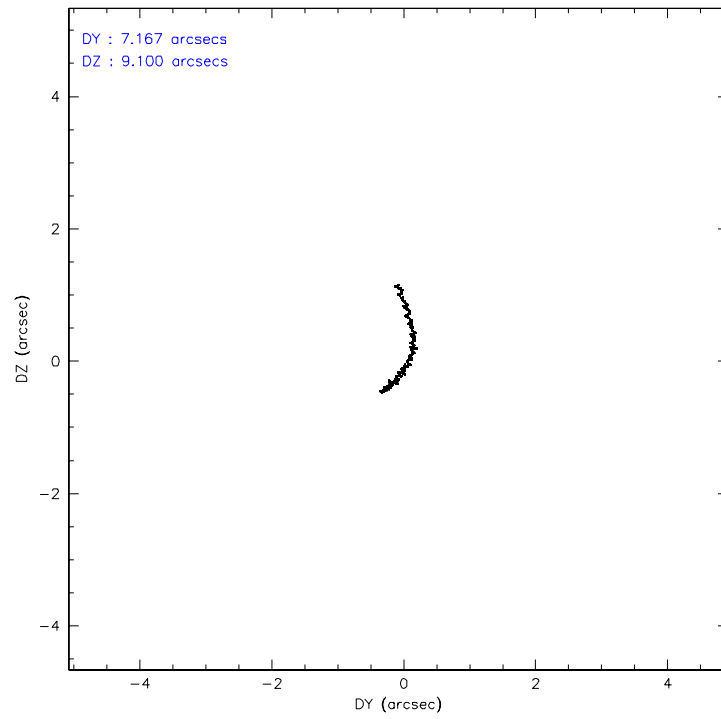
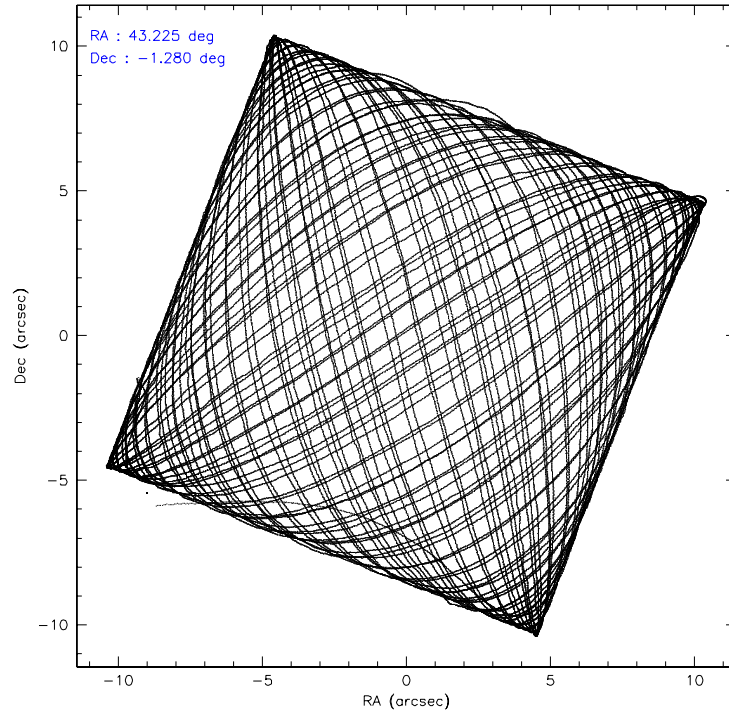
	ccd 2	ccd 3	ccd 5	ccd 6	ccd 7	ccd 8
level 1 events	214859	209063	353260	223110	326401	289039
rejected events	183165	177015	181810	184821	178172	205325
rejected %	85%	84%	51%	82%	54%	71%

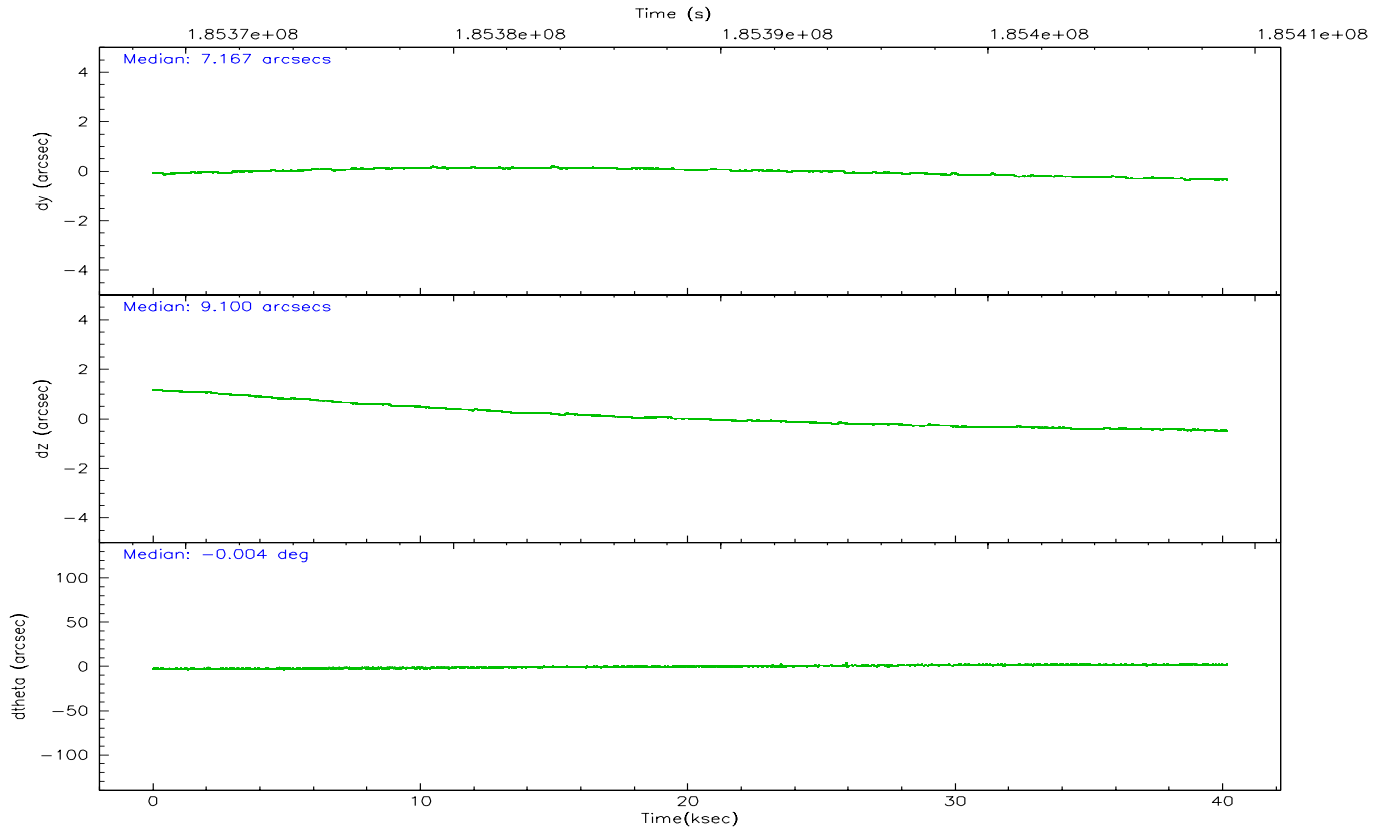
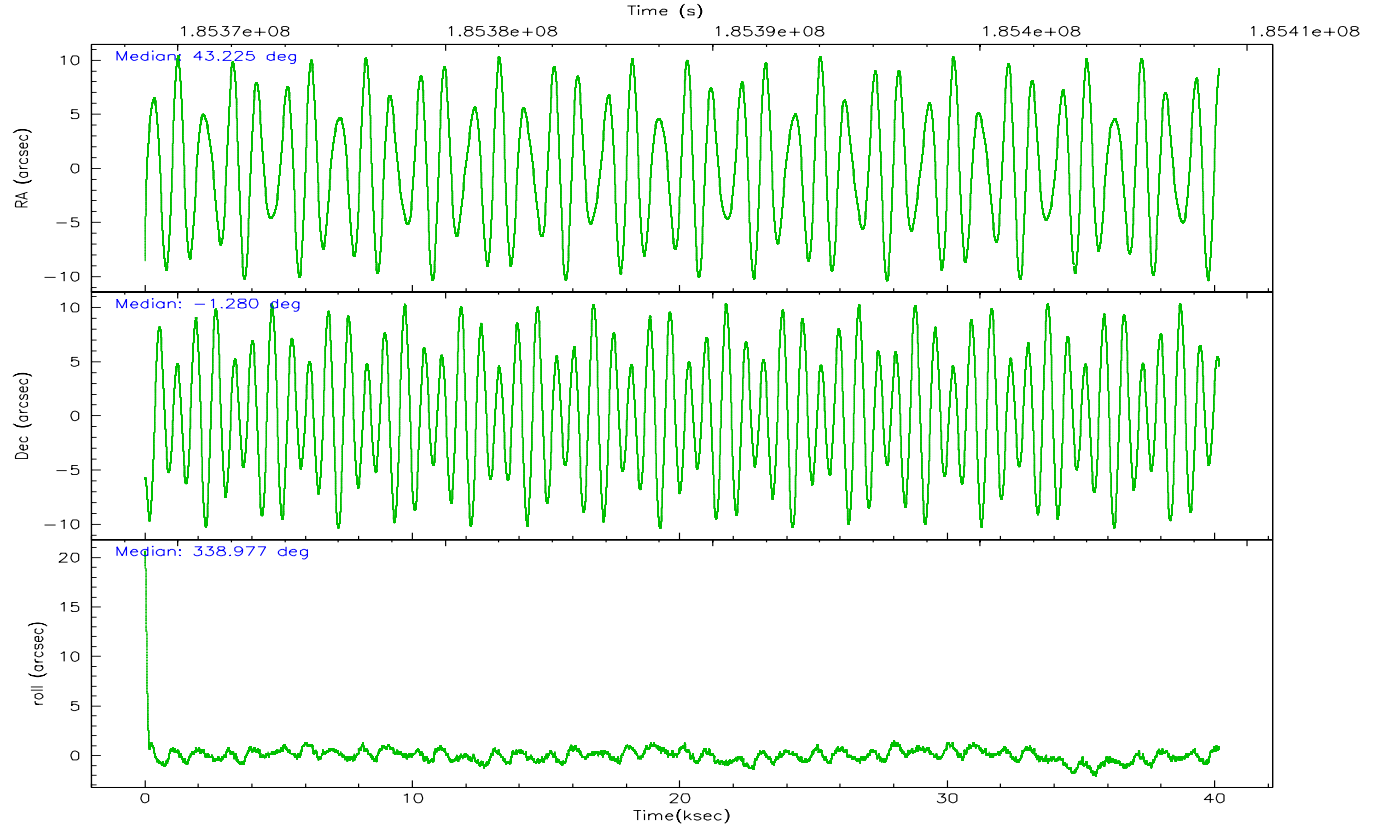
	ccd 2	ccd 3	ccd 5	ccd 6	ccd 7	ccd 8
grade 0 events	14795	14647	26542	18656	14540	32681
	6%	7%	7%	8%	4%	11%
grade 1 events	155	131	298	139	171	278
	0%	0%	0%	0%	0%	0%
grade 2 events	6574	7018	51254	8300	36581	15165
	3%	3%	14%	3%	11%	5%
grade 3 events	2527	2497	4019	2657	9063	9994
	1%	1%	1%	1%	2%	3%
grade 4 events	2544	2541	3861	2580	8965	9440
	1%	1%	1%	1%	2%	3%
grade 5 events	8466	9248	15496	9750	18710	12838
	3%	4%	4%	4%	5%	4%
grade 6 events	5273	5365	85918	6116	79197	16504
	2%	2%	24%	2%	24%	5%
grade 7 events	174525	167616	165872	174912	159174	192139
	81%	80%	46%	78%	48%	66%

## 2.2 Compared Parameters

Parameter	Planned	Actual	Parameter	Planned	Actual
Instrument	ACIS	ACIS	Obspar format version number	6	6
Detector	ACIS-235678	ACIS-235678	Obspar file type	PREDICTED	ACTUAL
Grating	NONE	NONE	Obspar update status	NONE	UPDATED
Data mode	FAINT	FAINT	On-chip summing requested	N	N
Observation mode	POINTING	POINTING	Subarray requested	NONE	NONE
Pointing RA	43.198100	43.22493407830305	Alternating exposures requested	N	N
Pointing Dec	-1.284497	-1.2798819615034	Primary exposure time	0.000000	3.2
Pointing Roll	338.827733	338.9849658773641			
SIM focus pos (mm)	-0.684267	-0.6828225247311905			
SIM defocus (mm)	0	0.001444936568705701			
SIM translation stage pos (mm)	-190.132523	-190.1400660498719			
SIM translation stage offset (mm)	0	0.00754346686406393			
Observation start time	185368942.184000	185367868.32719			
Observation start date	2003-11-16T11:21:18	2003-11-16T11:04:28			
Observation end time	185408942.184000	185409619.654			
Observation end date	2003-11-16T22:27:58	2003-11-16T22:40:19			
Read mode	TIMED	TIMED			

## 2.3 Aspect





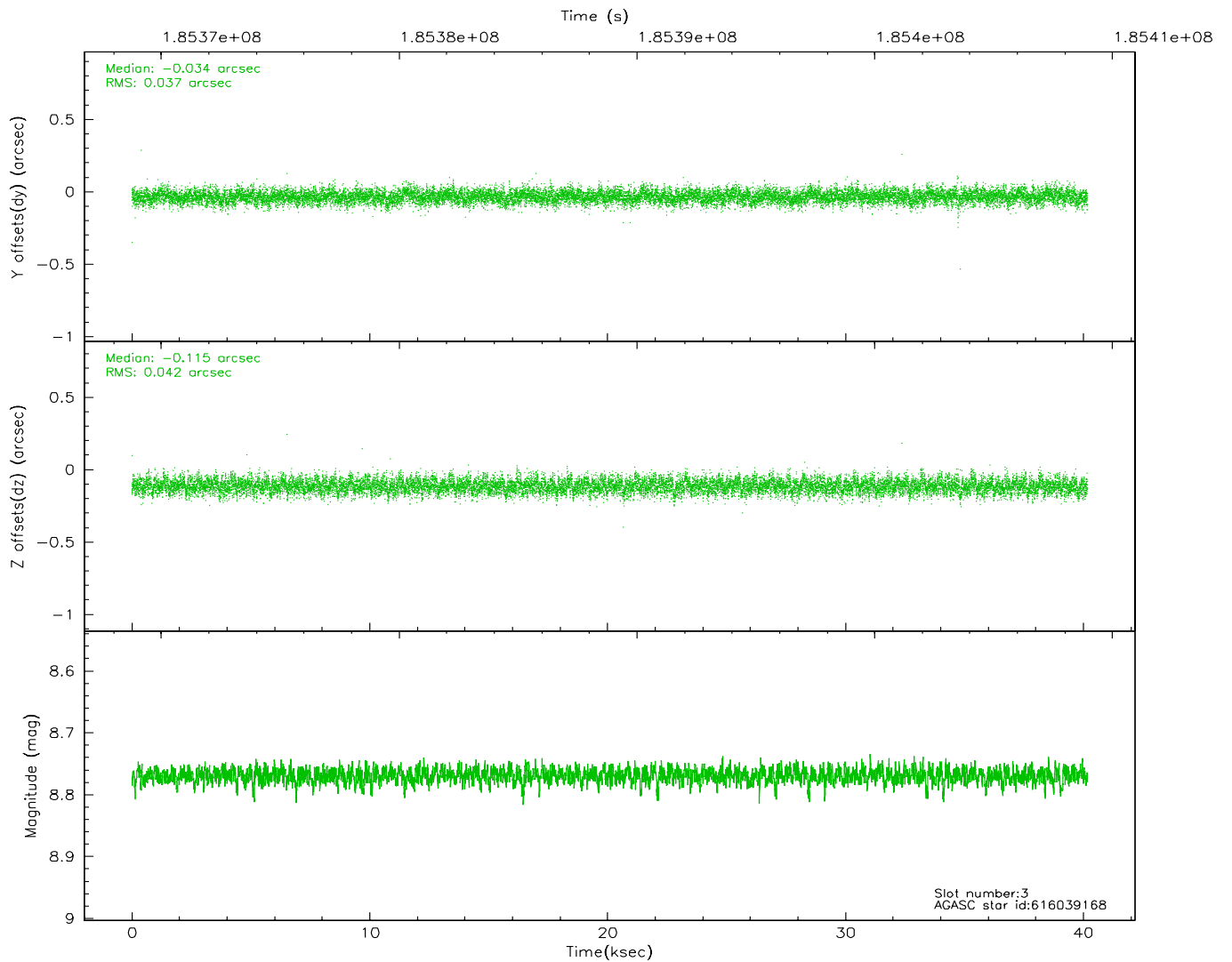
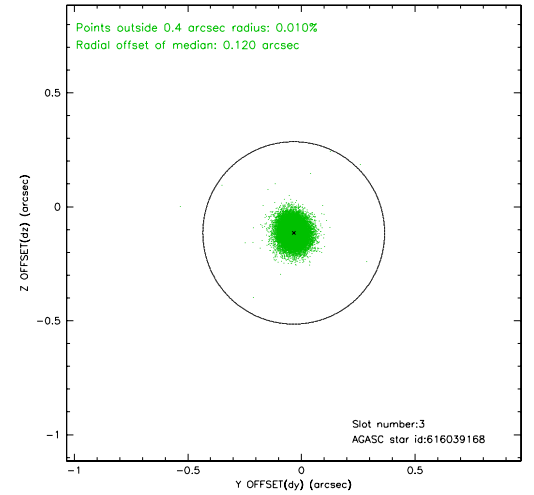
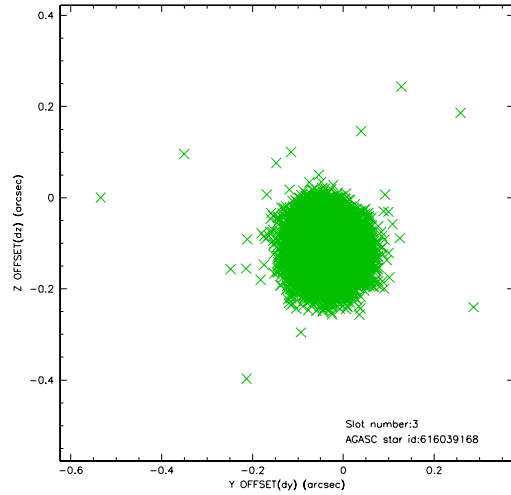
### Slot Statistics

slot	status	id	mag	n_pts	med_dy	med_dz	dr1	dr2	ra	dec	mean_y	mean_z
0	FID	ACIS-S-2	7.10	9798	-0.019	-0.002	0.014	0.027	0.000000	0.000000	-759.90	-1730.46
1	FID	ACIS-S-4	7.20	9799	0.012	0.010	0.008	0.021	0.000000	0.000000	2153.39	178.04
2	FID	ACIS-S-5	7.23	9799	-0.024	0.003	0.013	0.027	0.000000	0.000000	-1812.74	171.70
3	GUIDE	616039168	8.77	19584	-0.034	-0.115	0.059	0.095	43.286541	-1.259161	264.15	200.07
4	GUIDE	616040784	8.20	19595	0.016	-0.021	0.071	0.117	43.048598	-0.650379	-1326.39	1934.32
5	GUIDE	616041600	7.58	19597	-0.046	0.069	0.059	0.102	42.861991	-0.687877	-1903.96	1566.16
6	GUIDE	616041760	8.38	19593	0.078	0.043	0.057	0.093	43.423751	-1.458435	983.61	-290.13
7	GUIDE	616041576	7.38	19597	-0.016	0.026	0.051	0.081	43.396487	-1.641039	1129.63	-938.68

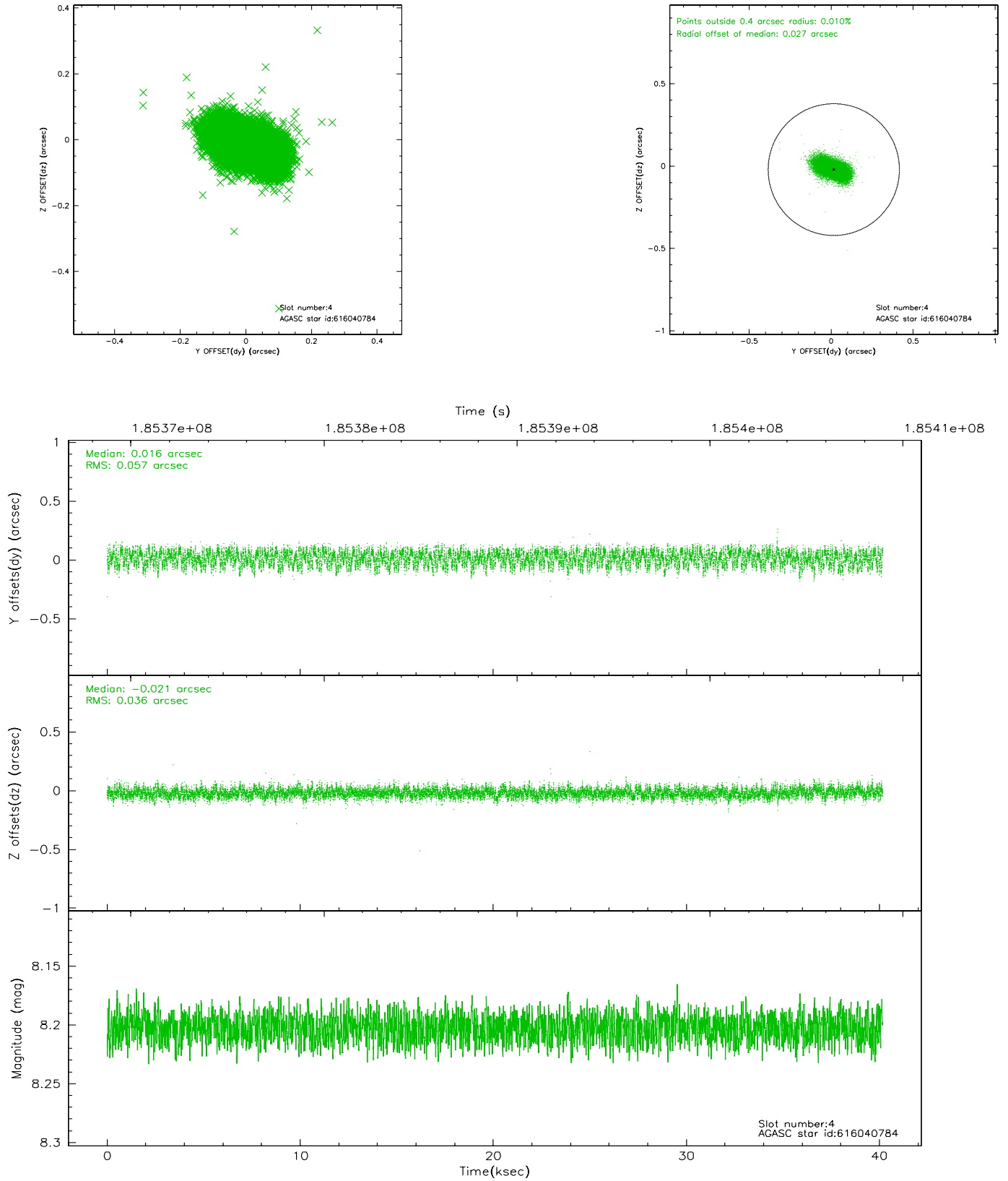


## 2.4 Star Slots

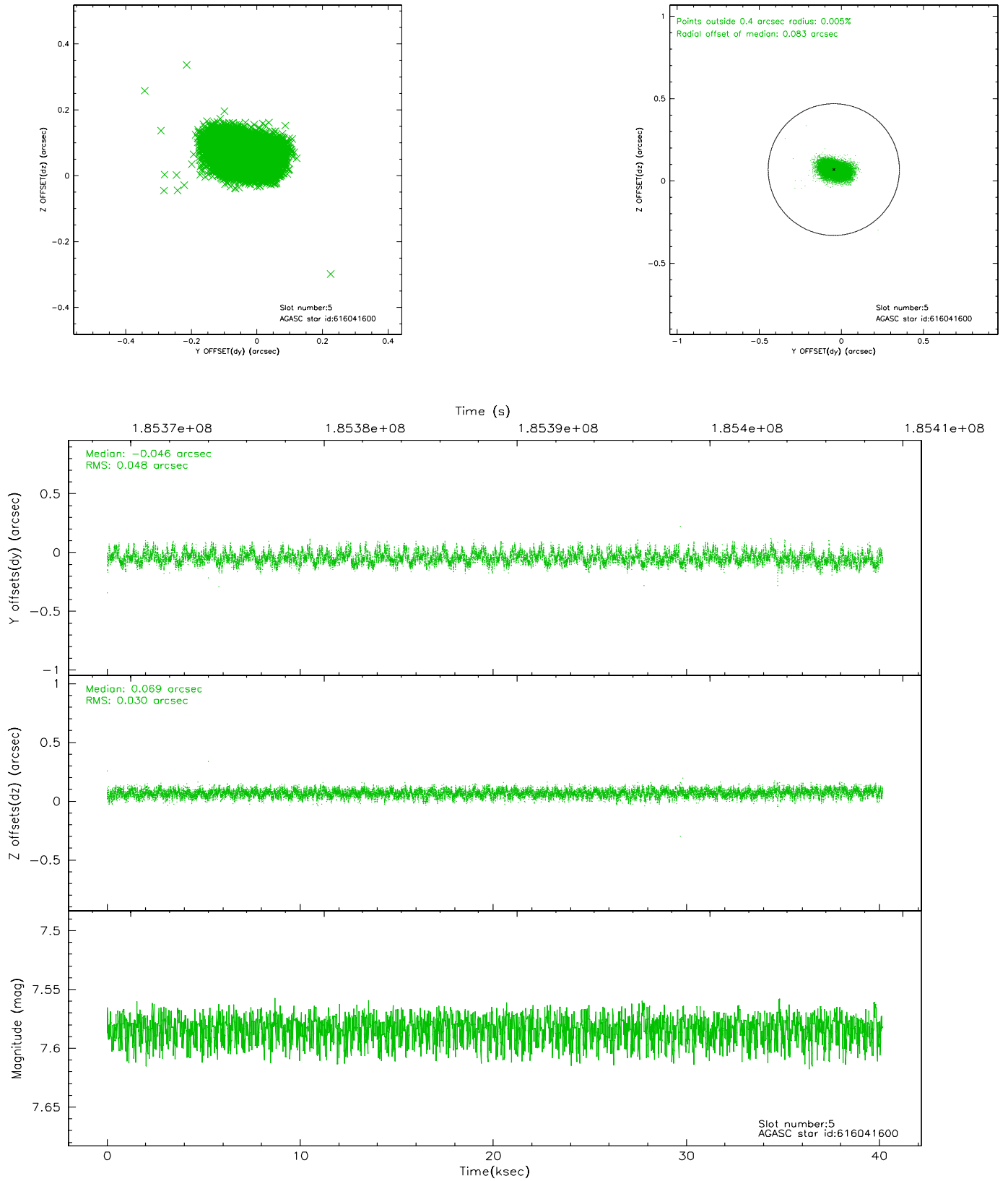
### 2.4.1 Slot 3



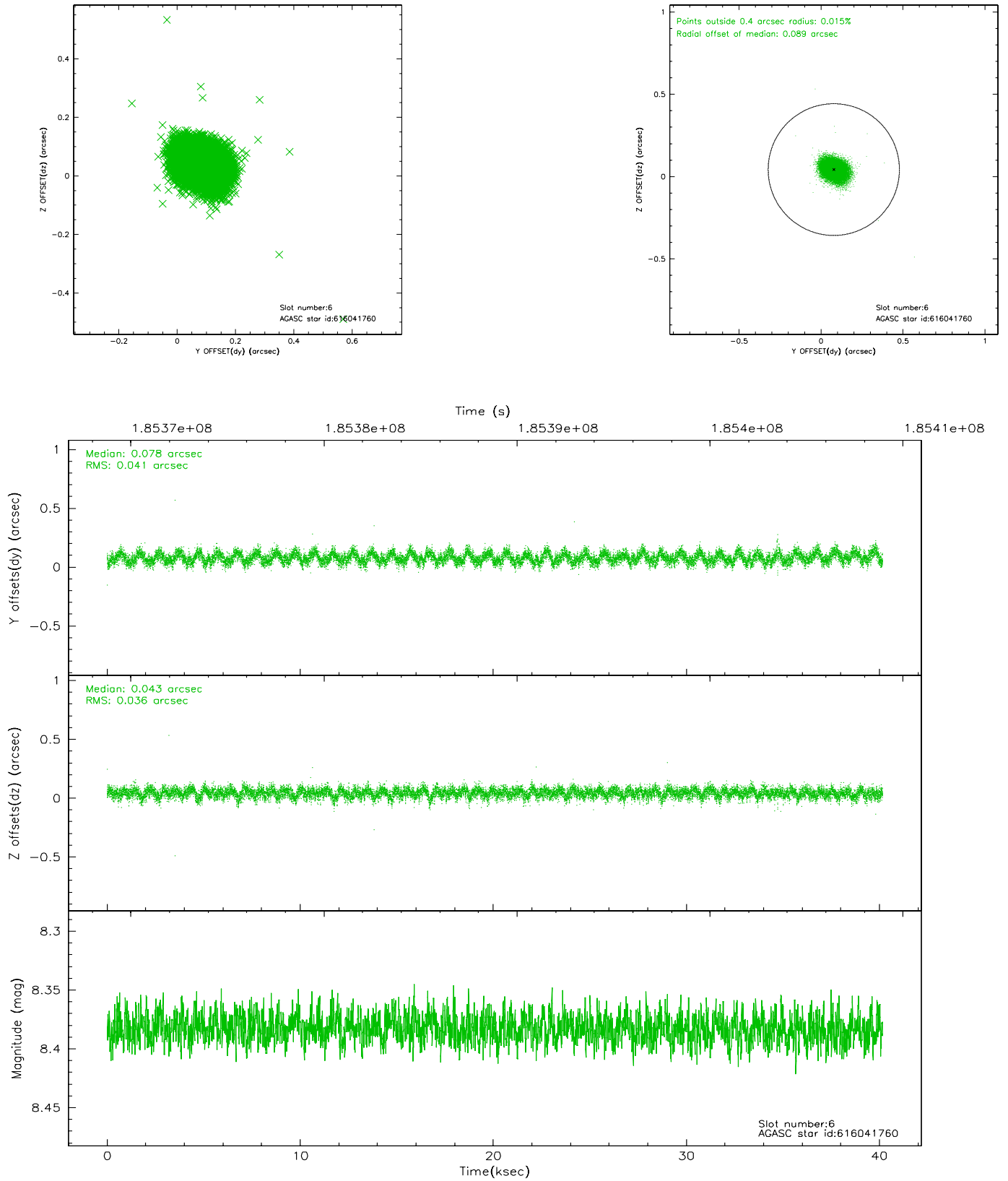
## 2.4.2 Slot 4



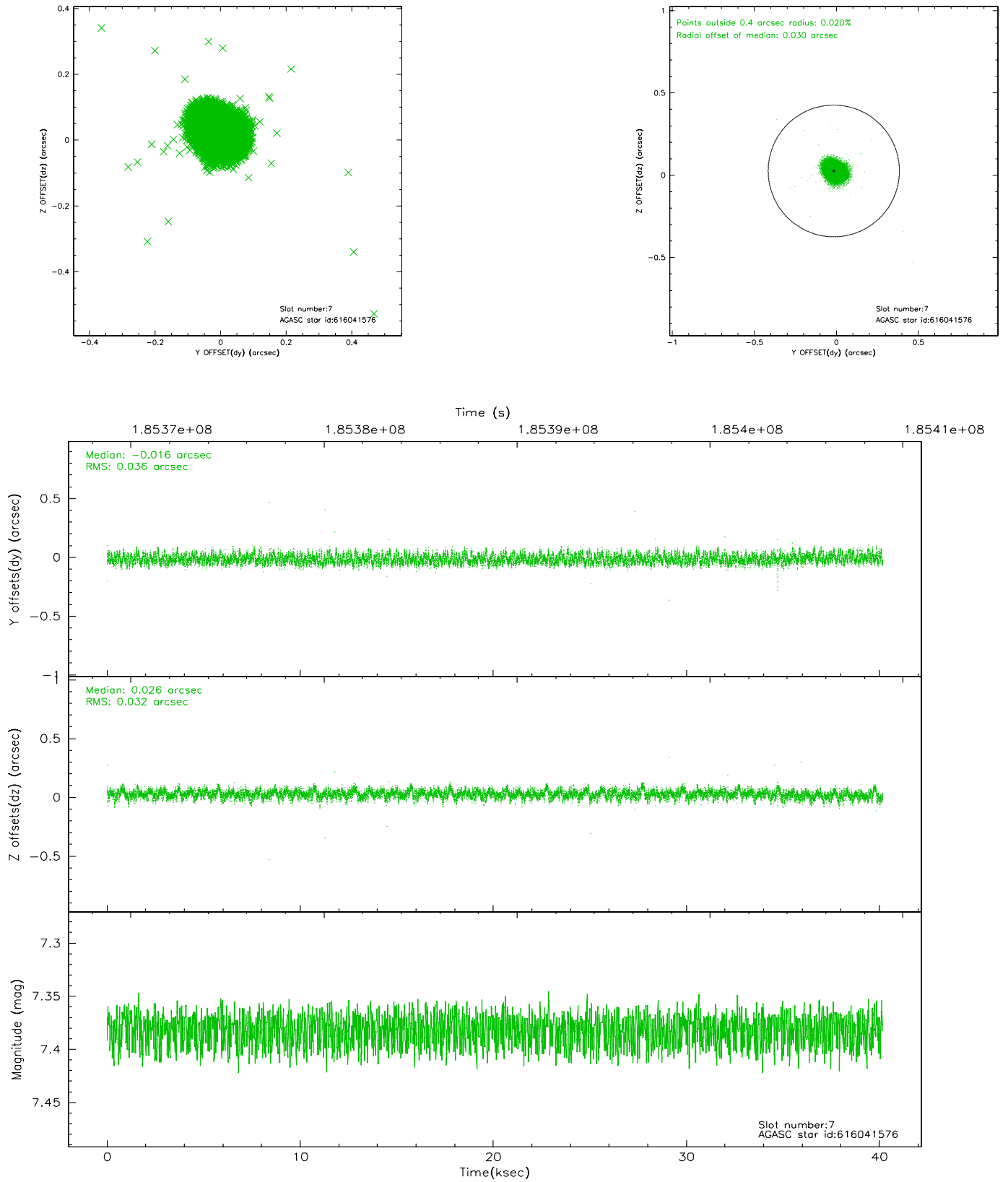
### 2.4.3 Slot 5



## 2.4.4 Slot 6

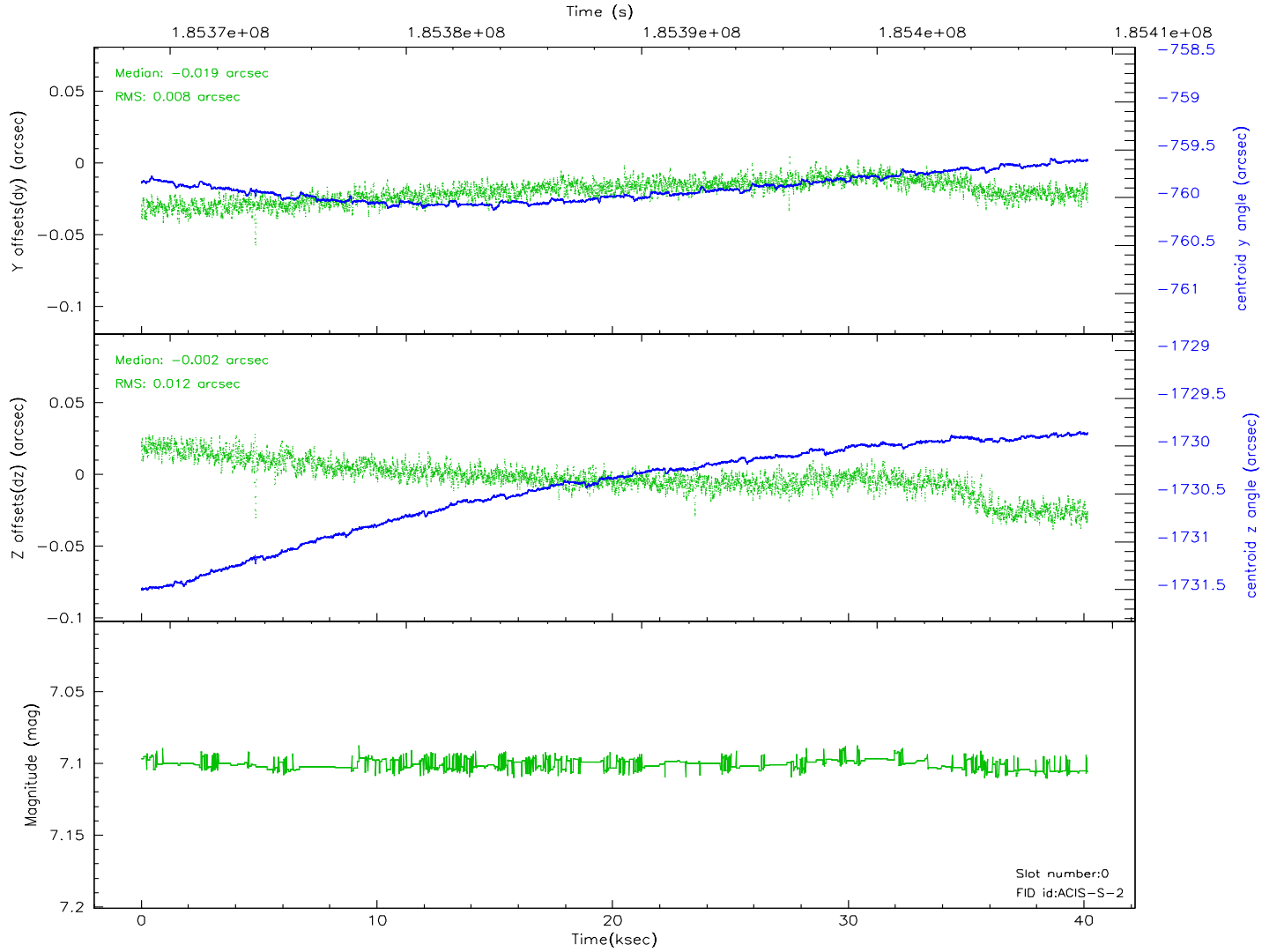
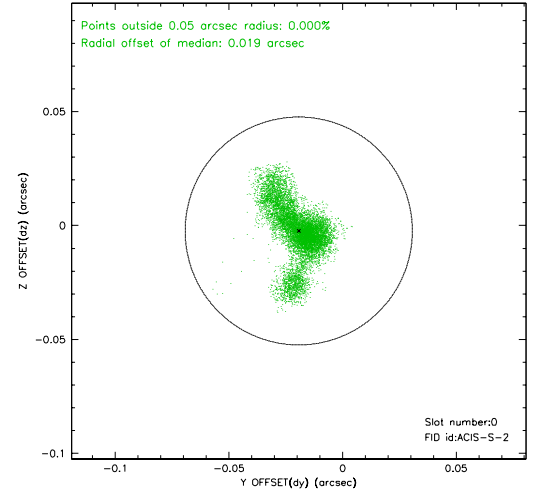
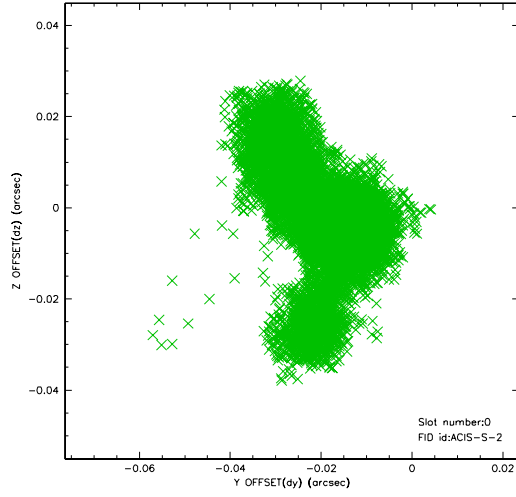


## 2.4.5 Slot 7

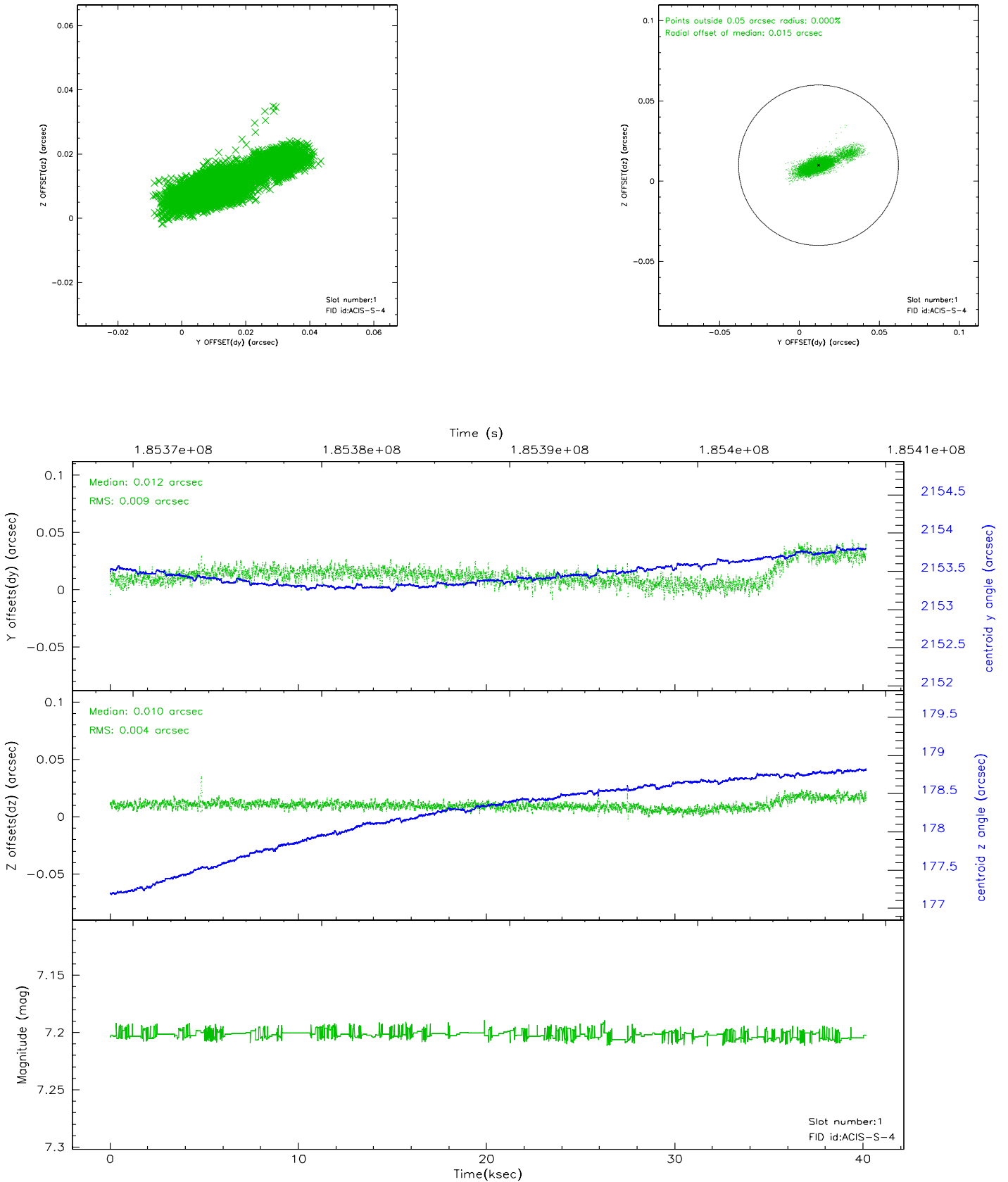


## 2.5 FID Slots

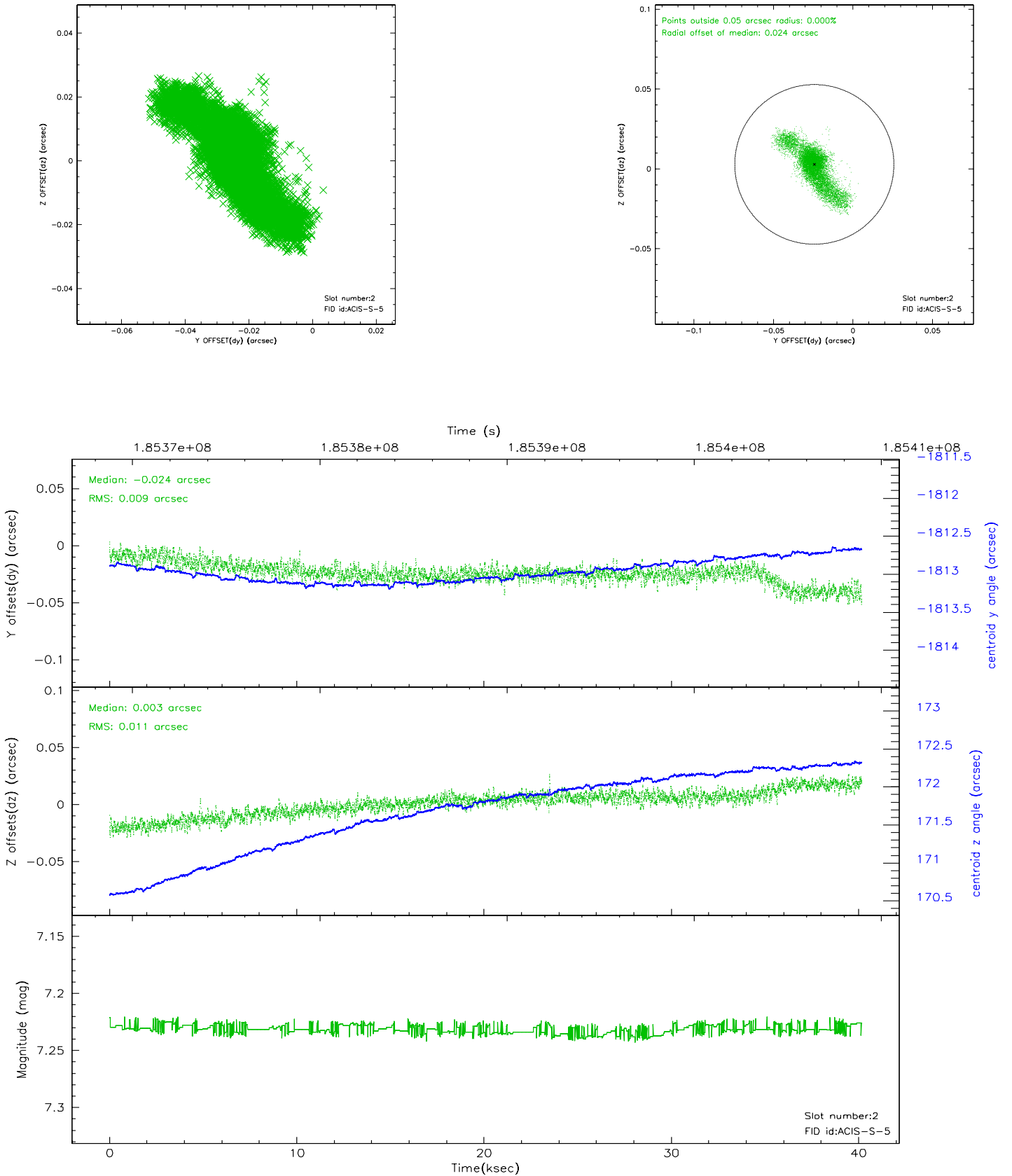
### 2.5.1 Slot 0



## 2.5.2 Slot 1

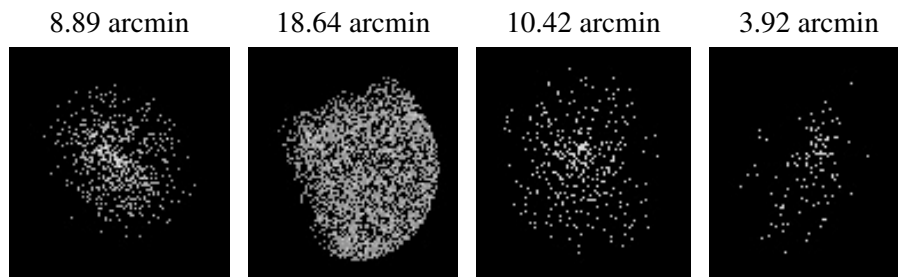


### 2.5.3 Slot 2





### 3 Point Sources



## A Summary

### A.1 Status

V&V Scientist	Beth Sundheim
V&V Date (YYYY-MM-DD)	2006.06.28
V&V Edition	1
V&V Disposition and Status	OK
V&V Charge Time	40.166

### A.2 Comments