

V&V Reference Report

L2 ASCDS Version : 7.6.9

Observation 3566 - L2 Version 001
Chandra X-Ray Center

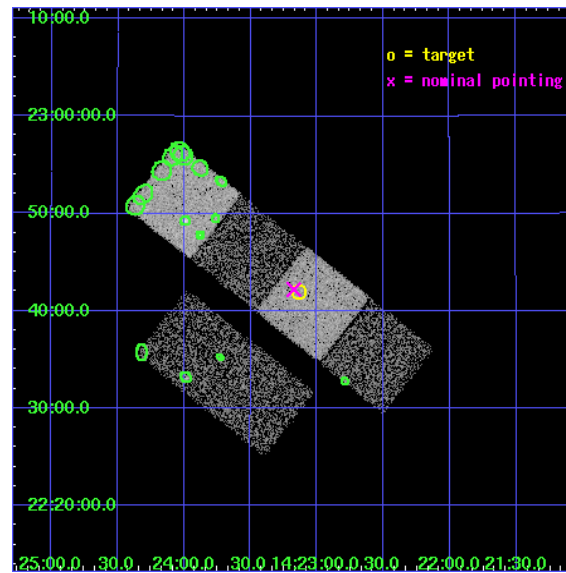
L2 Processing Date : Oct 13 2006

Contents

1	Front	2
2	OBI	3
2.1	OBI	3
2.1.1	Images	3
2.1.2	Bias	3
2.1.3	Parameters	4
2.1.4	Events	4
2.2	Compared Parameters	5
2.3	Aspect	6
2.4	Star Slots	9
2.4.1	Slot 3	9
2.4.2	Slot 4	10
2.4.3	Slot 5	11
2.4.4	Slot 6	12
2.5	FID Slots	13
2.5.1	Slot 0	13
2.5.2	Slot 1	14
2.5.3	Slot 2	15
3	Point Sources	16
A	Summary	17
A.1	Status	17
A.2	Comments	17

1 Front

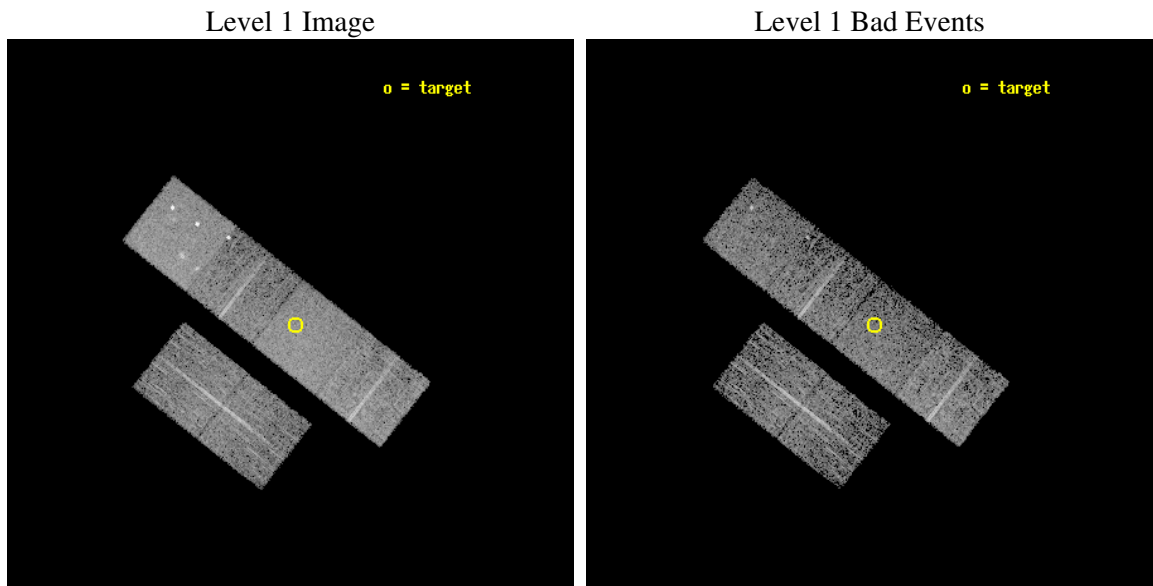
seq_num	700628
obs_id	3566
title	A CHANDRA SURVEY OF LUMINOUS, RADIO-DETECTED QUASARS AT $Z > 4$
observer	Professor Gordon Garmire
object	FIRST 1423+2241
dtcycle	0
cycle	P
ra_targ	215.784167
dec_targ	22.699306
ra_nom	215.79341139741
dec_nom	22.703874439778
roll_nom	38.286365069349
revision	2
ontime	4751.9999822974
livetime	4691.8272972107
ontime2	4751.9999822974
ontime3	4751.9999822974
ontime5	4751.9999822974
ontime6	4751.9999822974
ontime7	4751.9999822974
ontime8	4745.5181813538
l2events	46929



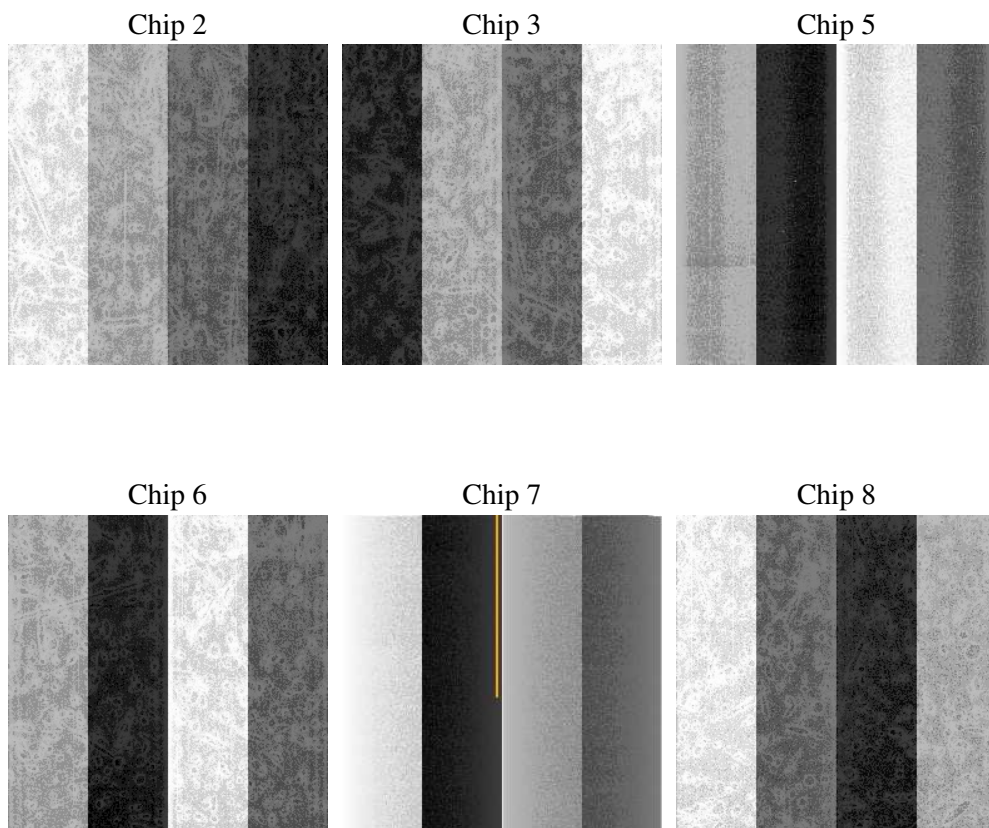
2 OBI

2.1 OBI

2.1.1 Images



2.1.2 Bias



2.1.3 Parameters

obi_num	0
ascdsver	7.6.9
caldsver	3.2.3
date	2006-10-13T18:12:28
revision	2

sched_exp_time	5000.000000
ontime	4757.7877681553
ontime2	4757.7877083123
ontime3	4761.0287483037
ontime5	4757.7877382338
ontime6	4761.0287483037
ontime7	4757.7877681553
ontime8	4754.5468477011
l1events	217919

2.1.4 Events

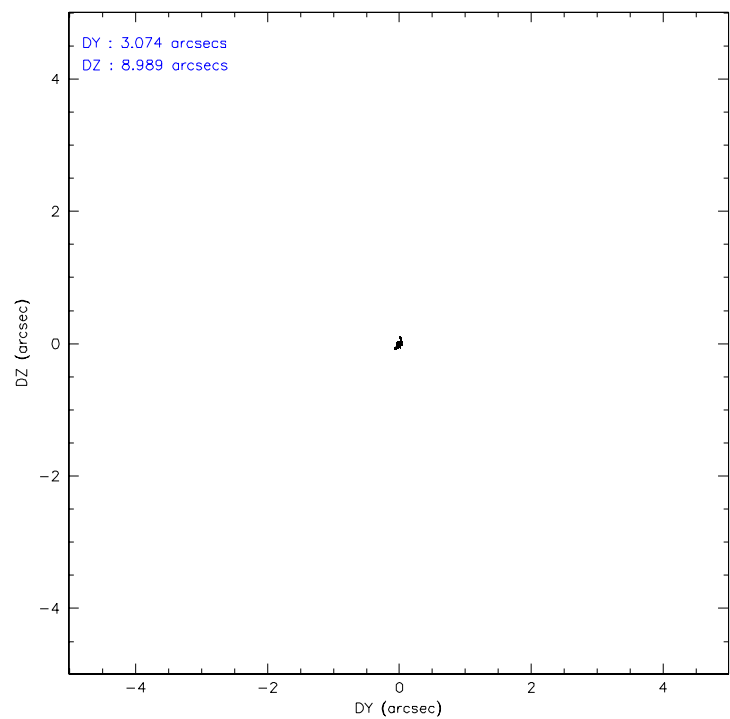
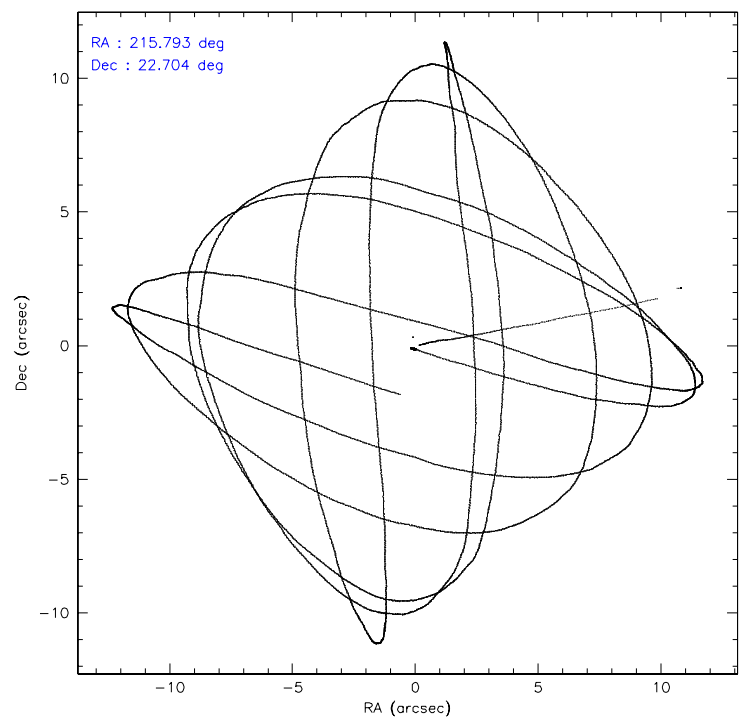
	ccd 2	ccd 3	ccd 5	ccd 6	ccd 7	ccd 8
level 1 events	30863	28797	46762	30106	40252	41139
rejected events	27284	25348	24775	26462	24565	33546
rejected %	88%	88%	52%	87%	61%	81%

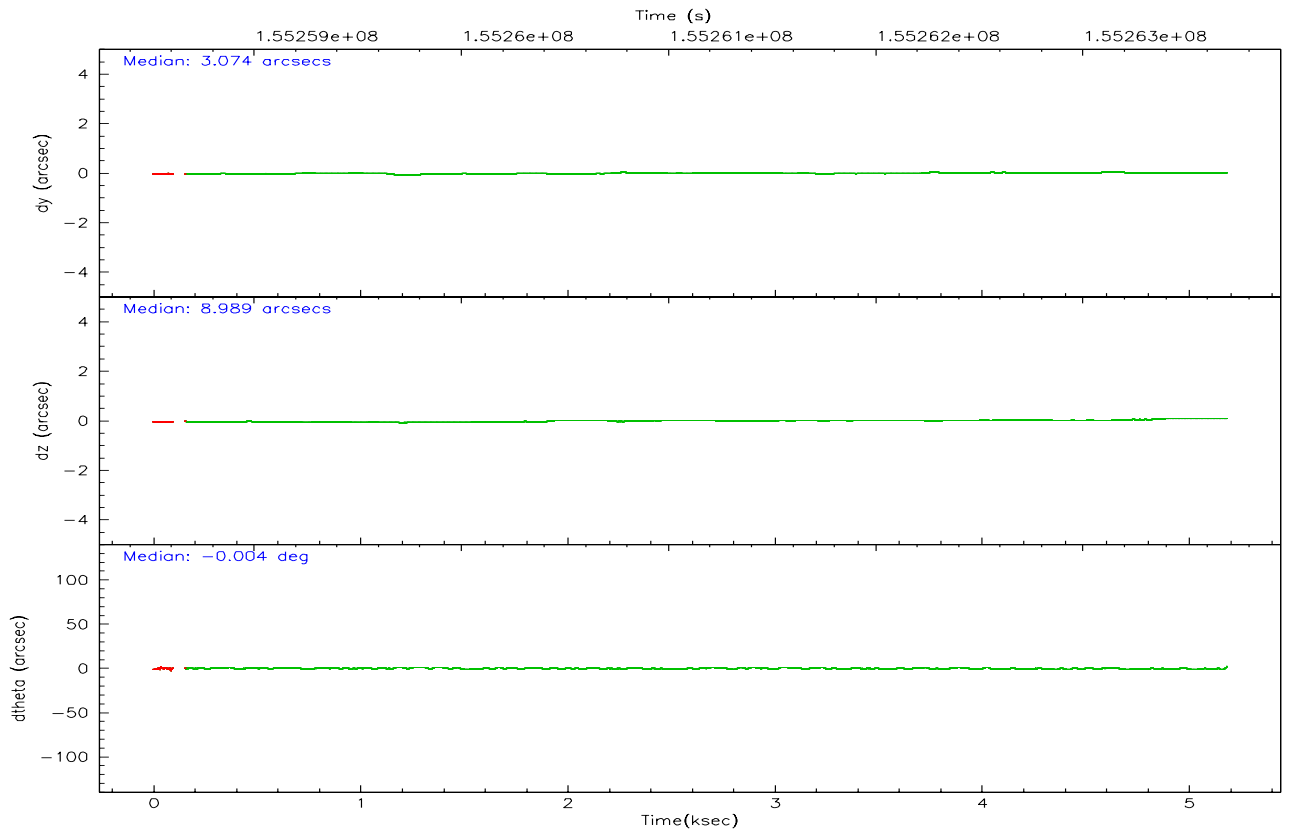
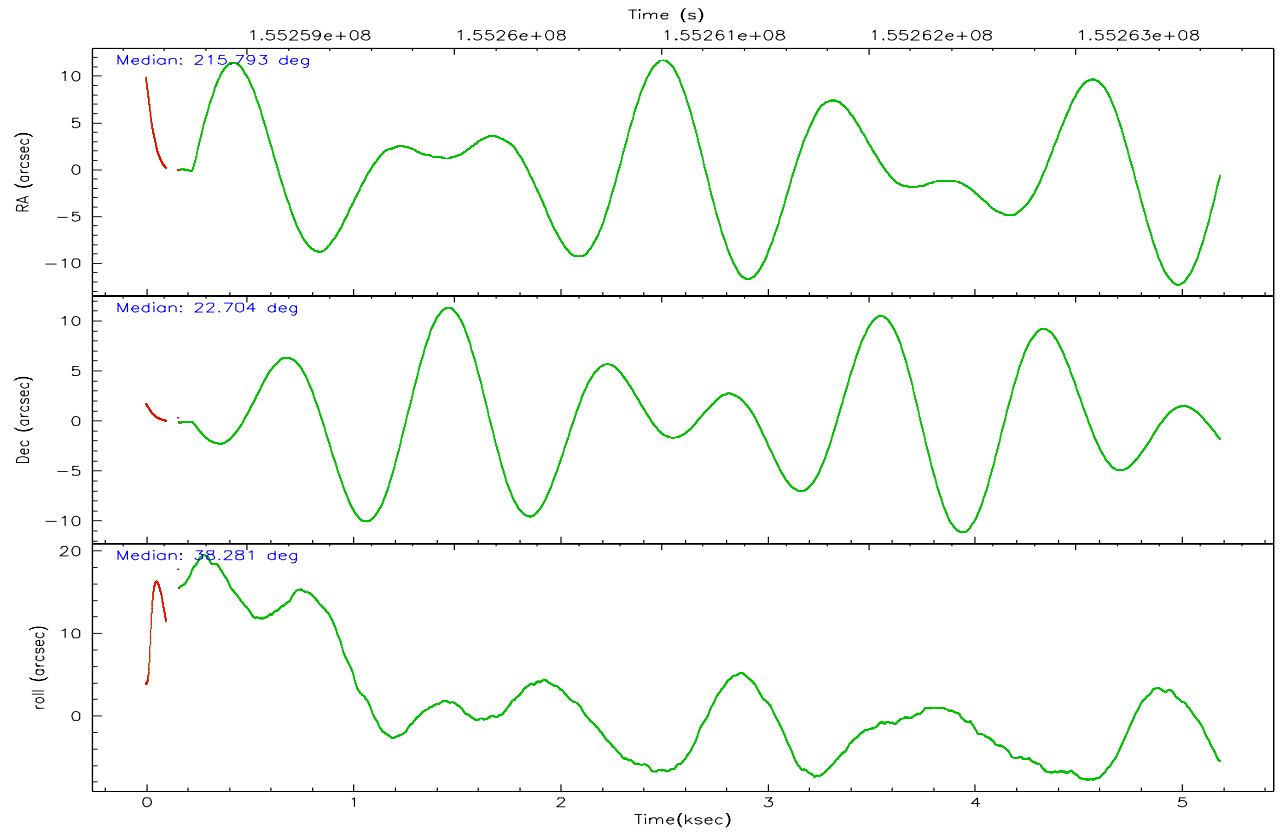
	ccd 2	ccd 3	ccd 5	ccd 6	ccd 7	ccd 8
grade 0 events	1616	1504	3358	1530	1073	2379
	5%	5%	7%	5%	2%	5%
grade 1 events	18	16	324	15	27	22
	0%	0%	0%	0%	0%	0%
grade 2 events	730	637	6247	705	3857	1700
	2%	2%	13%	2%	9%	4%
grade 3 events	319	357	559	354	809	784
	1%	1%	1%	1%	2%	1%
grade 4 events	303	350	514	365	736	682
	0%	1%	1%	1%	1%	1%
grade 5 events	1124	1215	2276	1324	2770	1687
	3%	4%	4%	4%	6%	4%
grade 6 events	616	608	11338	702	9244	2055
	1%	2%	24%	2%	22%	4%
grade 7 events	26137	24110	22146	25111	21736	31830
	84%	83%	47%	83%	53%	77%

2.2 Compared Parameters

Parameter	Planned	Actual	Parameter	Planned	Actual
Instrument	ACIS	ACIS	Obspar format version number	6	6
Detector	ACIS-235678	ACIS-235678	Obspar file type	PREDICTED	ACTUAL
Grating	NONE	NONE	Obspar update status	NONE	UPDATED
Data mode	FAINT	FAINT	Number of optional ACIS chips dropped	0	0
Observation mode	POINTING	POINTING	On-chip summing requested	N	N
Pointing RA	215.782860	215.7934113974146	Subarray requested	NONE	NONE
Pointing Dec	22.678447	22.70387443977835	Alternating exposures requested	N	N
Pointing Roll	38.133834	38.28636506934926	Primary exposure time	0.000000	3.2
SIM focus pos (mm)	-0.684267	-0.6828225247311905			
SIM defocus (mm)	0	0.001444936568705701			
SIM translation stage pos (mm)	-190.132523	-190.1400660498719			
SIM translation stage offset (mm)	0	0.00754346686406393			
Observation start time	155258694.184000	155257985.70008			
Observation start date	2002-12-02T23:23:50	2002-12-02T23:13:05			
Observation end time	155263694.184000	155264143.90033			
Observation end date	2002-12-03T00:47:10	2002-12-03T00:55:43			
Read mode	TIMED	TIMED			

2.3 Aspect



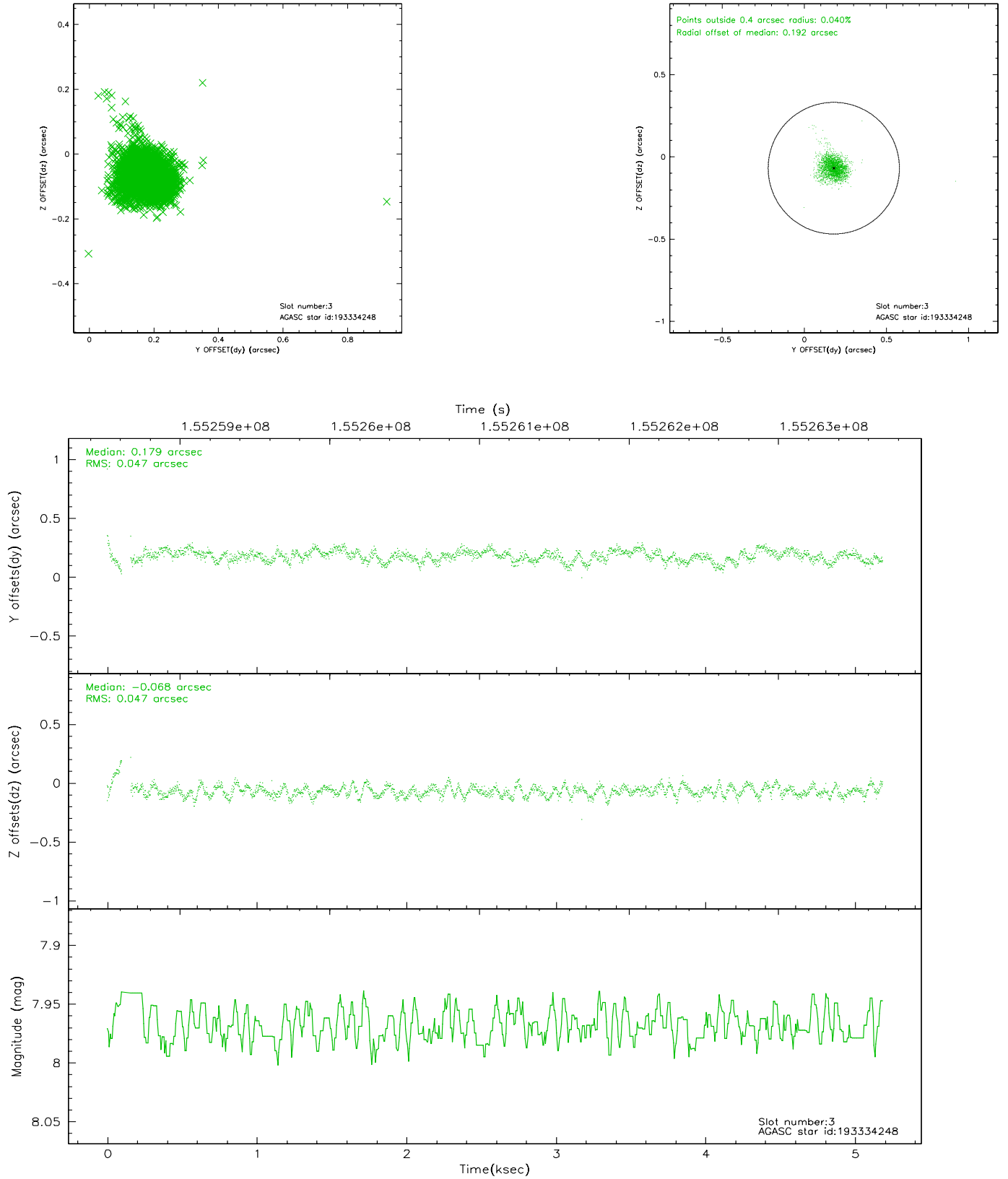


Slot Statistics

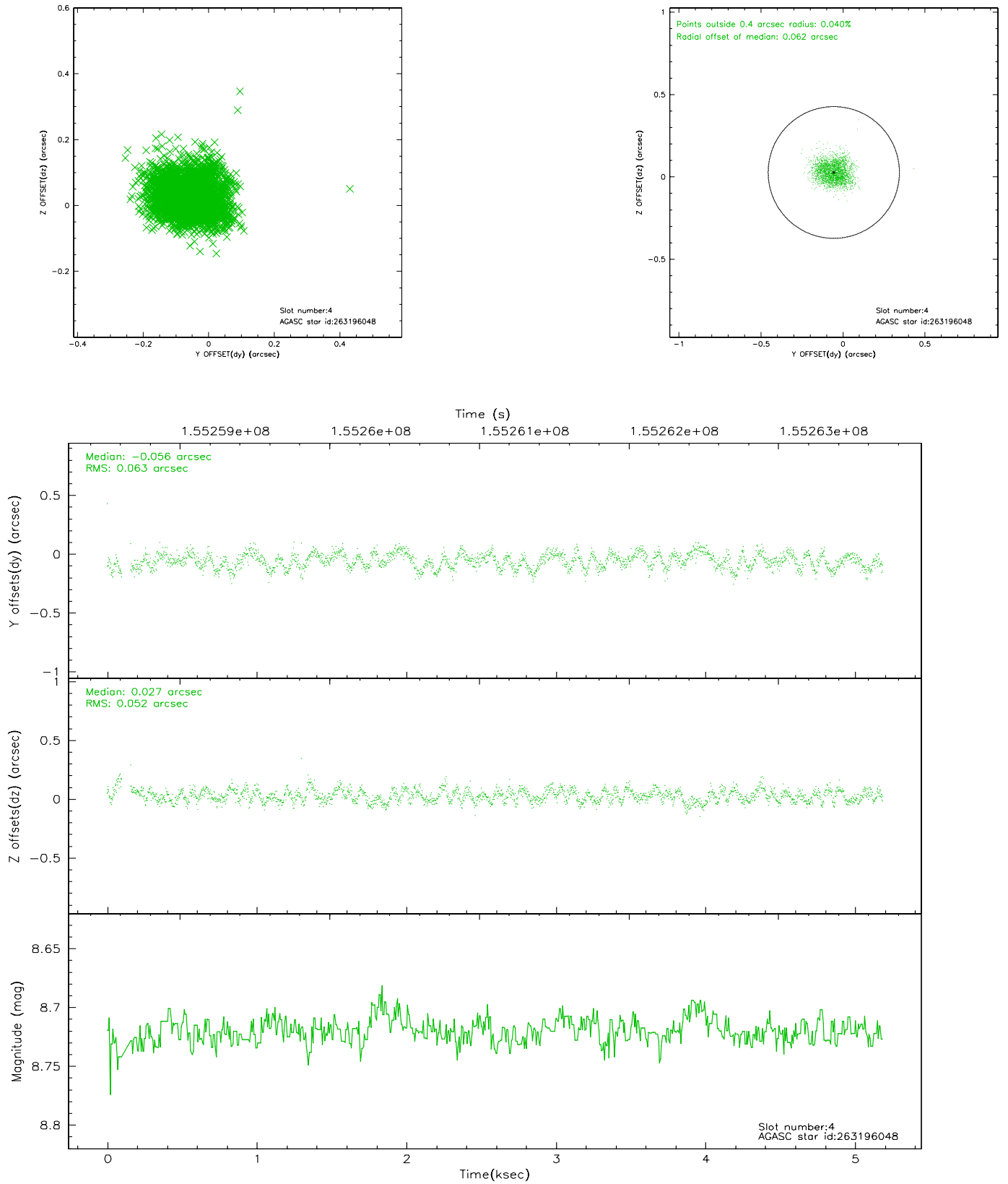
slot	status	id	mag	n_pts	med_dy	med_dz	dr1	dr2	ra	dec	mean_y	mean_z
0	FID	ACIS-S-2	7.11	1252	-0.015	0.014	0.007	0.011	0.000000	0.000000	-755.72	-1730.19
1	FID	ACIS-S-4	7.20	1252	-0.033	0.004	0.005	0.010	0.000000	0.000000	2157.00	177.07
2	FID	ACIS-S-5	7.24	1252	0.017	-0.009	0.006	0.010	0.000000	0.000000	-1807.02	172.06
3	GUIDE	193334248	7.97	2502	0.179	-0.068	0.067	0.107	215.839819	22.271930	-753.49	-1268.83
4	GUIDE	263196048	8.72	2503	-0.056	0.027	0.086	0.135	216.468737	22.828170	2126.52	-977.94
5	GUIDE	263200584	9.67	2502	-0.003	-0.220	0.093	0.152	215.715152	23.220906	1031.14	1673.47
6	GUIDE	194250128	9.09	2502	-0.121	0.265	0.112	0.184	216.438086	22.290634	858.72	-2441.30
7	MONITOR		0.00	0	0.000	0.000	0.000	0.000	0.000000	0.000000	0.00	0.00

2.4 Star Slots

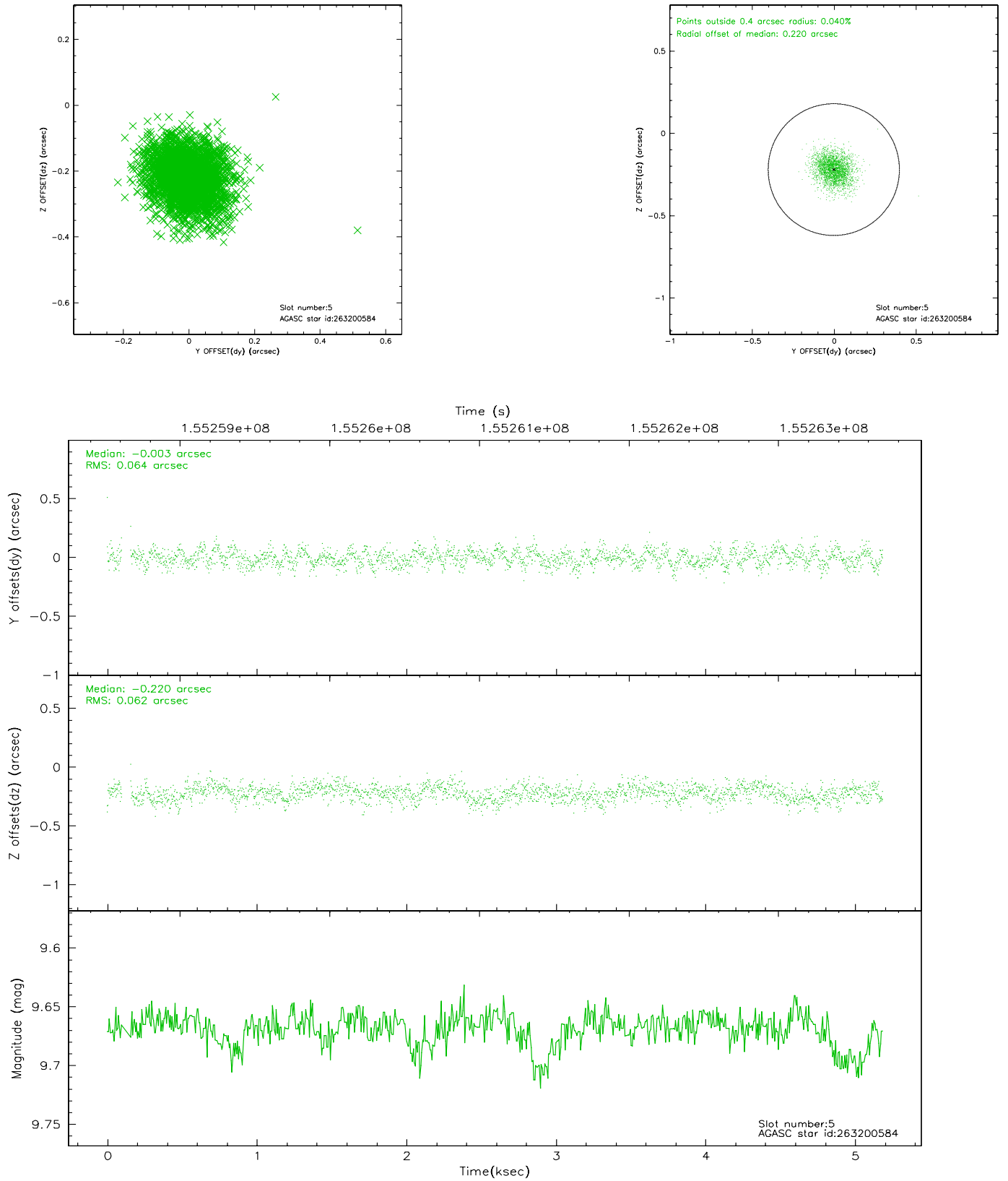
2.4.1 Slot 3



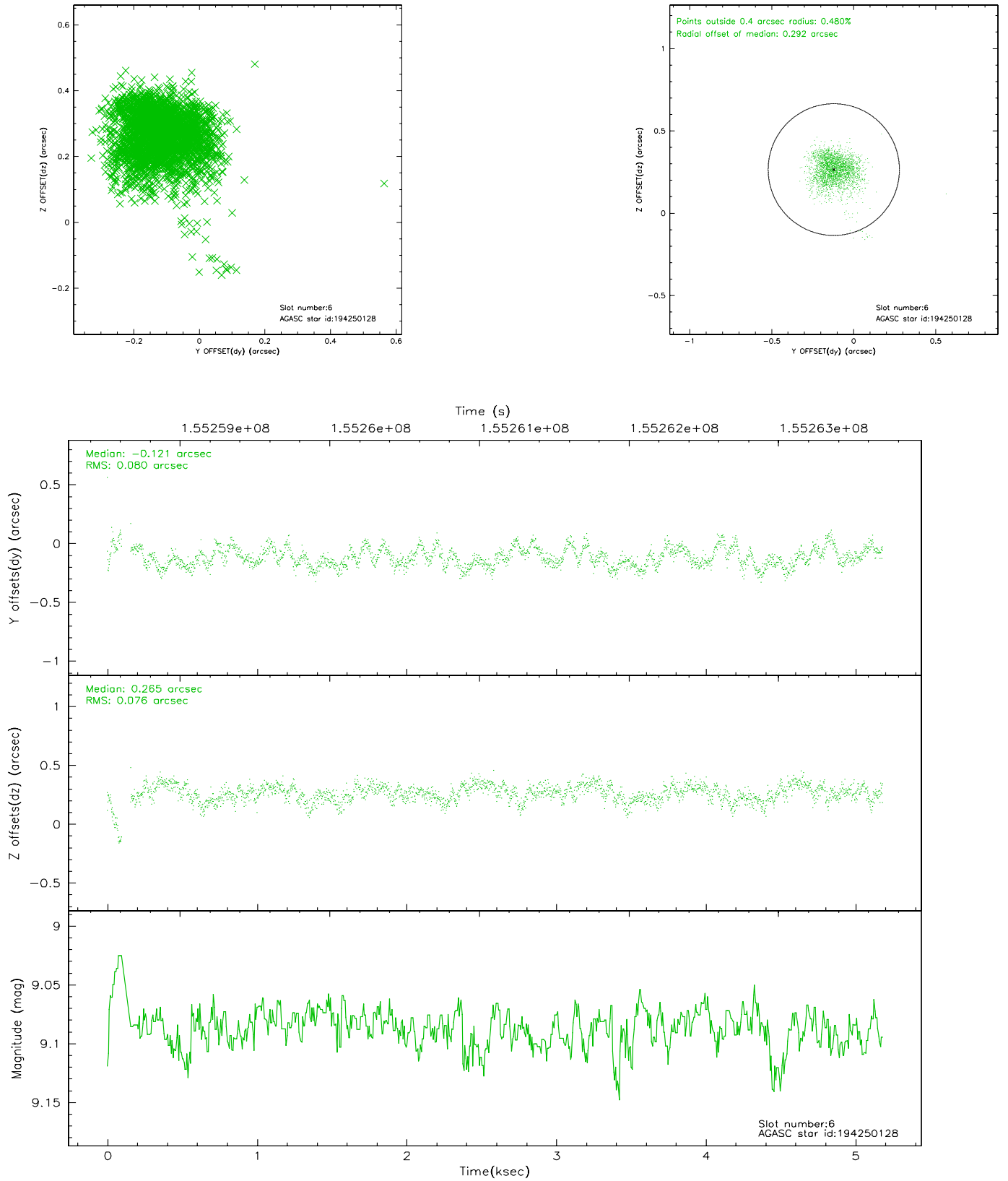
2.4.2 Slot 4



2.4.3 Slot 5

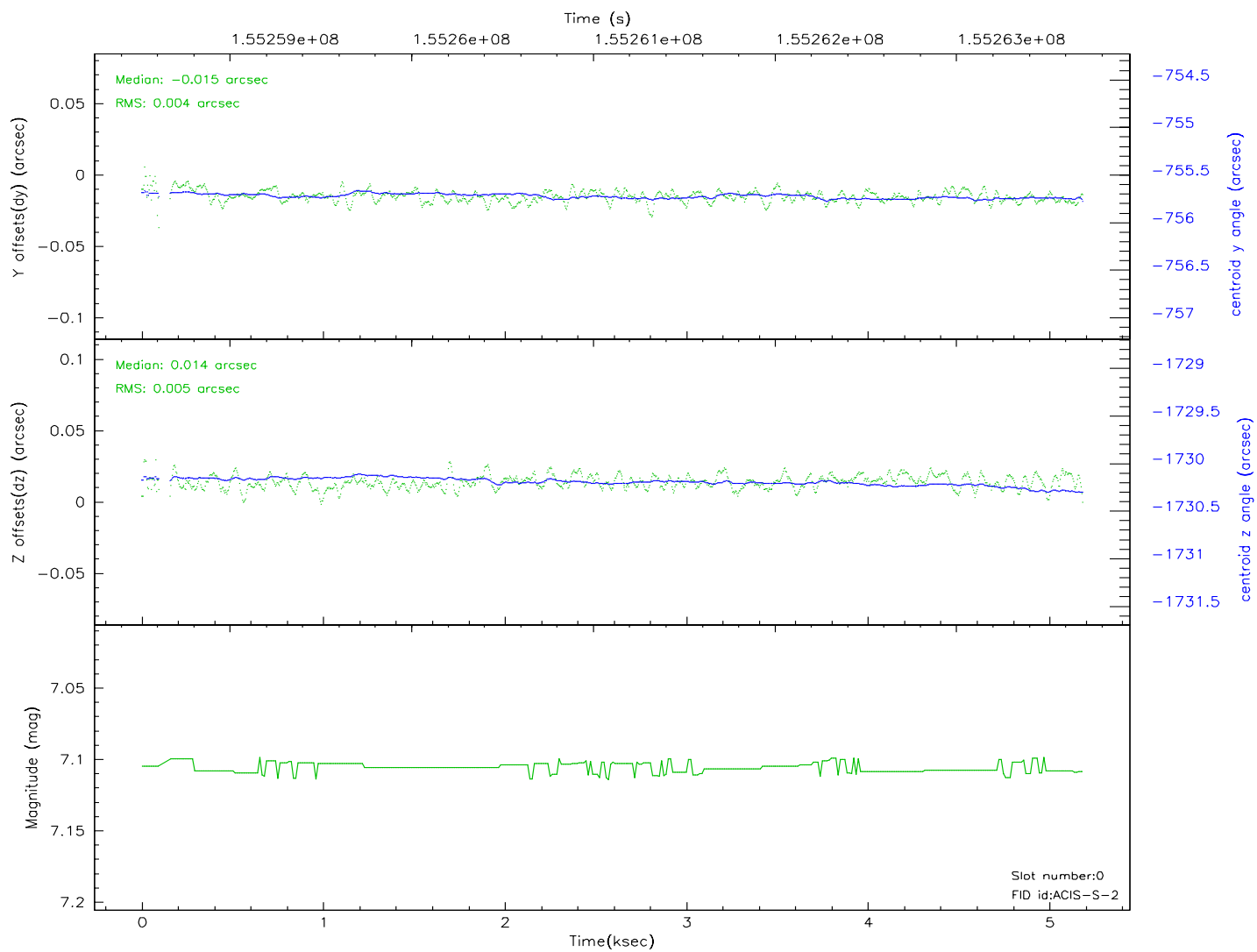
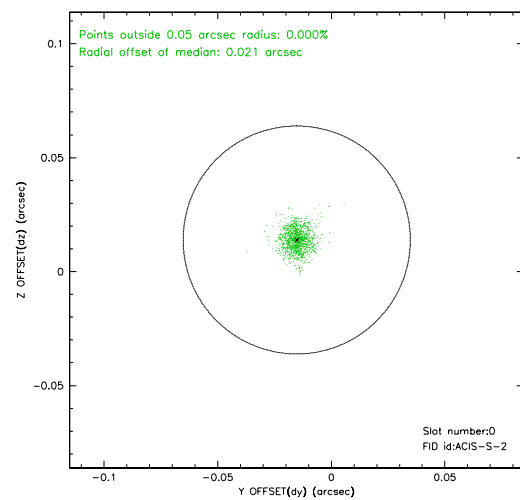
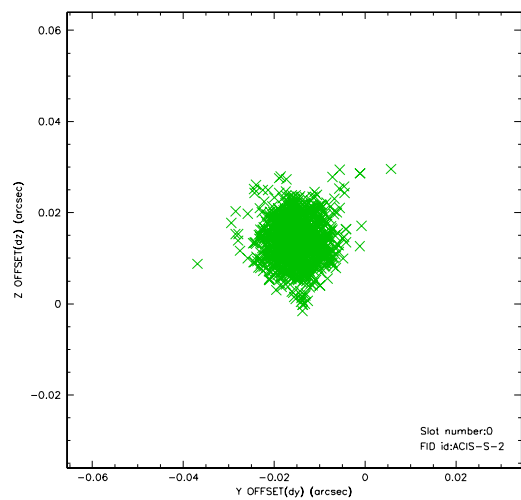


2.4.4 Slot 6

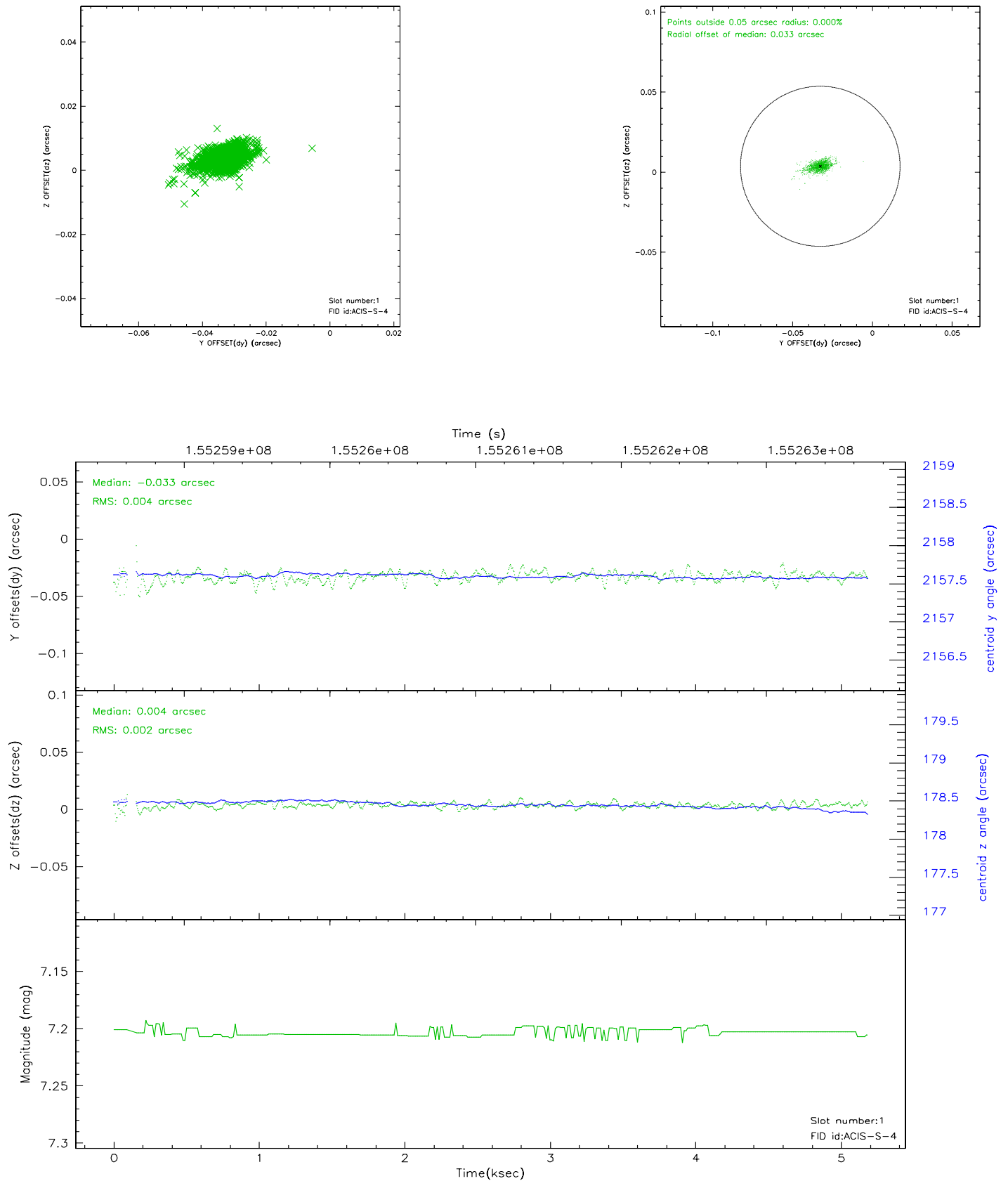


2.5 FID Slots

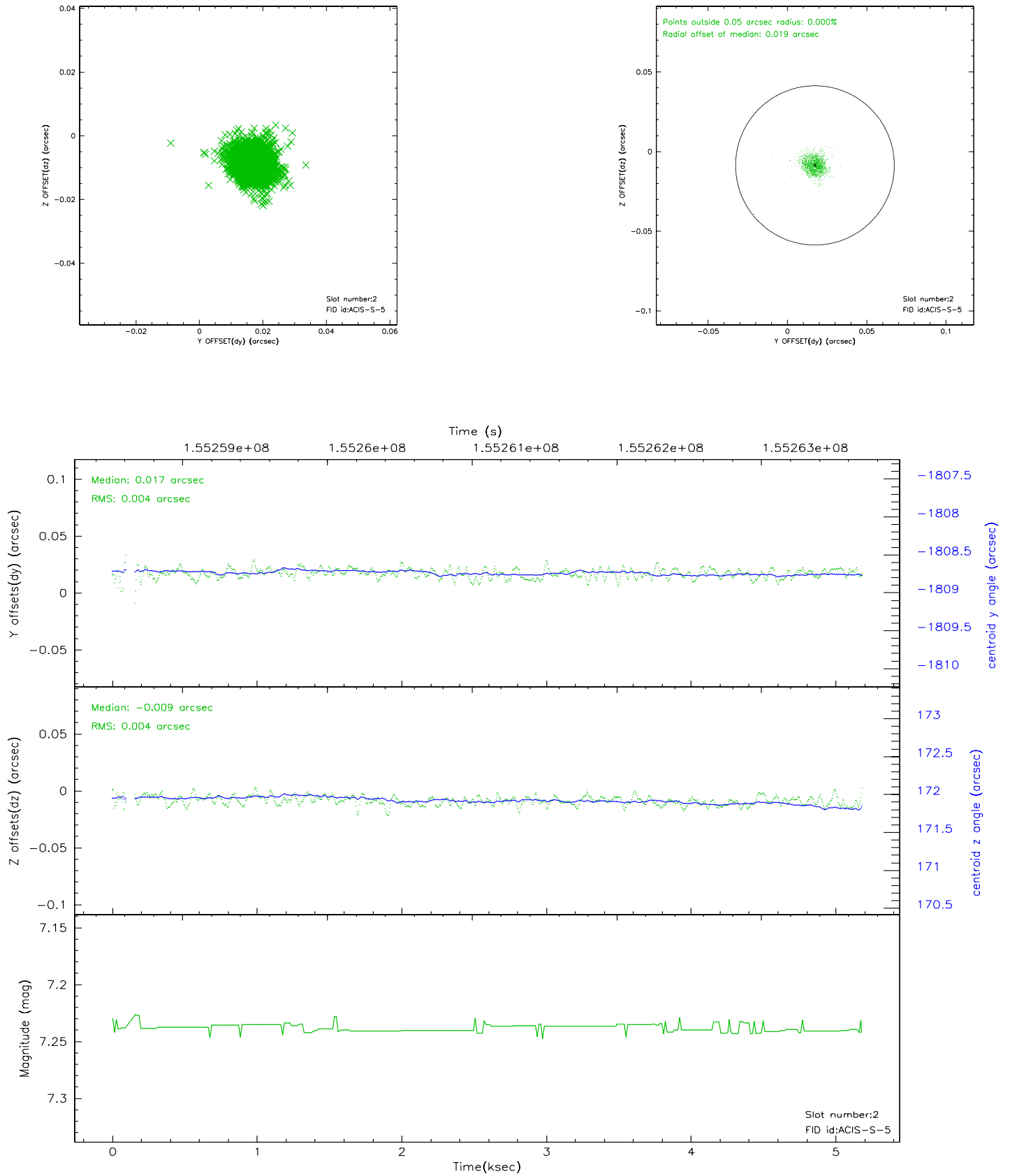
2.5.1 Slot 0



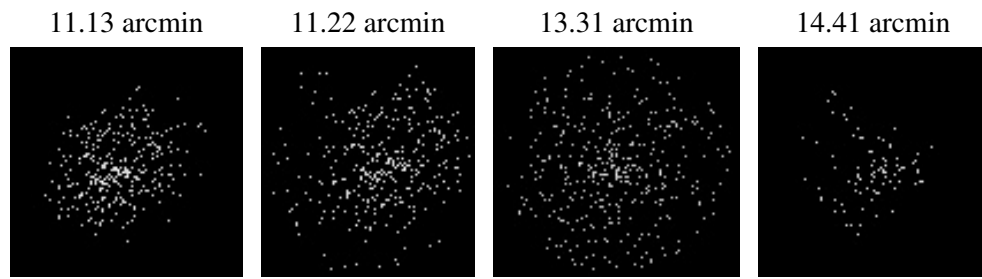
2.5.2 Slot 1



2.5.3 Slot 2



3 Point Sources



A Summary

A.1 Status

V&V Scientist	Beth Sundheim
V&V Date (YYYY-MM-DD)	2006.10.13
V&V Edition	1
V&V Disposition and Status	OK
V&V Charge Time	4.755

A.2 Comments