

# V&V Reference Report

## L2 ASCDS Version : 7.6.9

Observation 3336 - L2 Version 001  
Chandra X-Ray Center

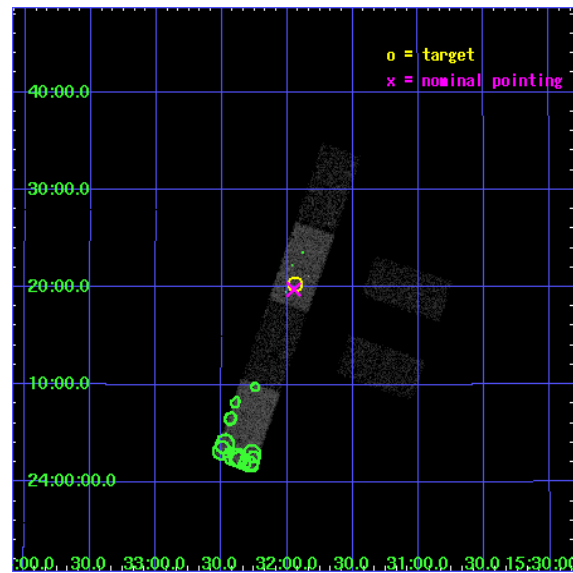
L2 Processing Date : Oct 4 2006

## Contents

<b>1</b>	<b>Front</b>	<b>2</b>
<b>2</b>	<b>OBI</b>	<b>3</b>
2.1	OBI . . . . .	3
2.1.1	Images . . . . .	3
2.1.2	Bias . . . . .	3
2.1.3	Parameters . . . . .	4
2.1.4	Events . . . . .	4
2.2	Compared Parameters . . . . .	5
2.3	Aspect . . . . .	6
2.4	Star Slots . . . . .	9
2.4.1	Slot 3 . . . . .	9
2.4.2	Slot 4 . . . . .	10
2.4.3	Slot 5 . . . . .	11
2.4.4	Slot 6 . . . . .	12
2.4.5	Slot 7 . . . . .	13
2.5	FID Slots . . . . .	14
2.5.1	Slot 0 . . . . .	14
2.5.2	Slot 1 . . . . .	15
2.5.3	Slot 2 . . . . .	16
<b>3</b>	<b>Point Sources</b>	<b>17</b>
<b>A</b>	<b>Summary</b>	<b>18</b>
A.1	Status . . . . .	18
A.2	Comments . . . . .	18

# 1 Front

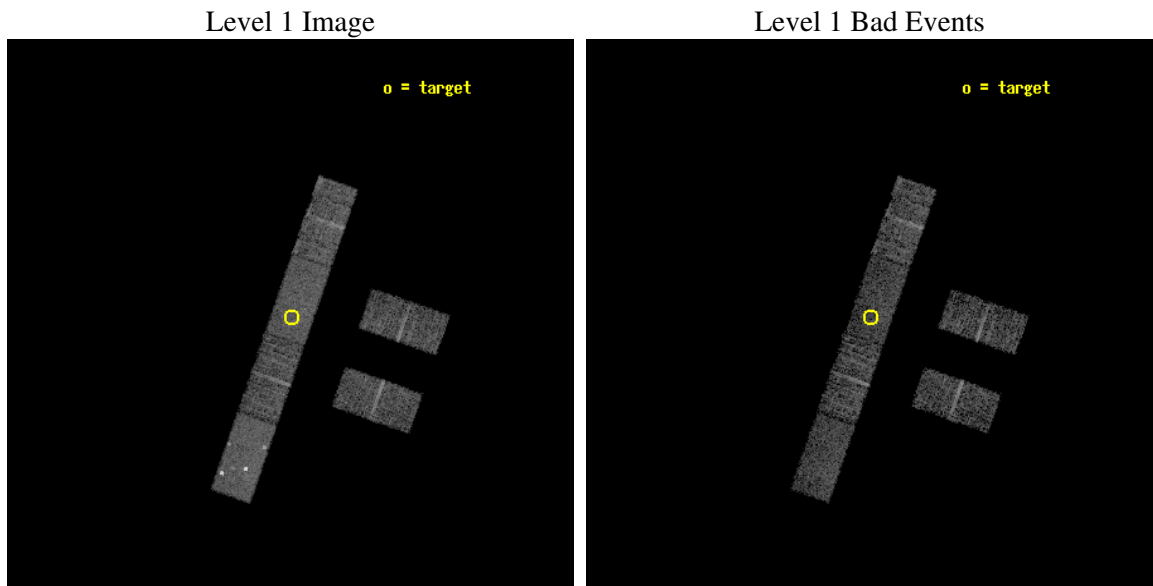
seq_num	900175
obs_id	3336
title	THE SHEEP SURVEY: WHAT KIND OF OBJECTS MAKE THE X-RAY BACKGROUND?
observer	Professor Kirpal Nandra
object	AX J1531.9+2420
dtcycle	0
cycle	P
ra_targ	232.985417
dec_targ	24.339444
ra_nom	232.98718701978
dec_nom	24.329821786027
roll_nom	289.2293278951
revision	2
ontime	5171.4000342488
livetime	5056.120487142
ontime2	5171.4000342488
ontime3	5171.4000342488
ontime5	5171.4000342488
ontime6	5171.4000342488
ontime7	5171.4000342488
ontime8	5171.4000342488
l2events	26664



## 2 OBI

### 2.1 OBI

#### 2.1.1 Images



#### 2.1.2 Bias

Chip 2

Chip 3

Chip 5



Chip 6

Chip 7

Chip 8



### 2.1.3 Parameters

obi_num	0
ascdsver	7.6.9
caldbver	3.2.3
date	2006-10-04T17:54:43
revision	2

sched_exp_time	5000.000000
ontime	5889.4134738743
ontime2	5889.4134439826
ontime3	5891.254483968
ontime5	5889.4134738743
ontime6	5891.254483968
ontime7	5889.4134738743
ontime8	5891.254483968
l1events	145088

### 2.1.4 Events

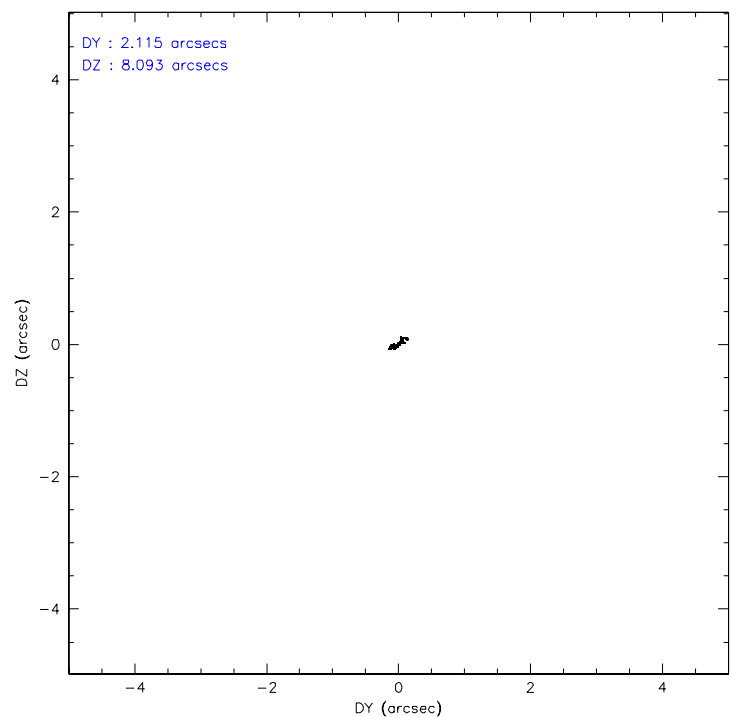
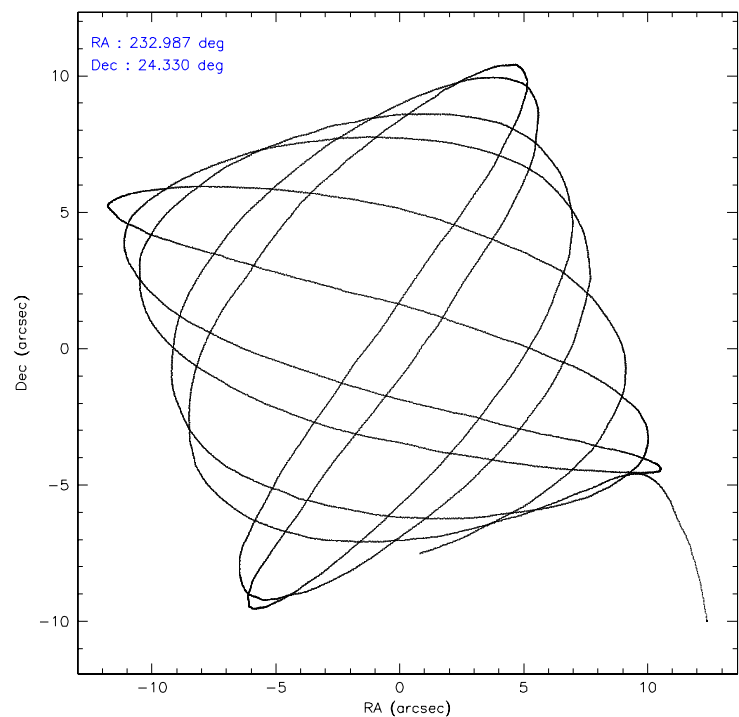
	ccd 2	ccd 3	ccd 5	ccd 6	ccd 7	ccd 8
level 1 events	19845	20067	32956	20575	26143	25502
rejected events	17848	18066	17328	18554	16284	21375
rejected %	89%	90%	52%	90%	62%	83%

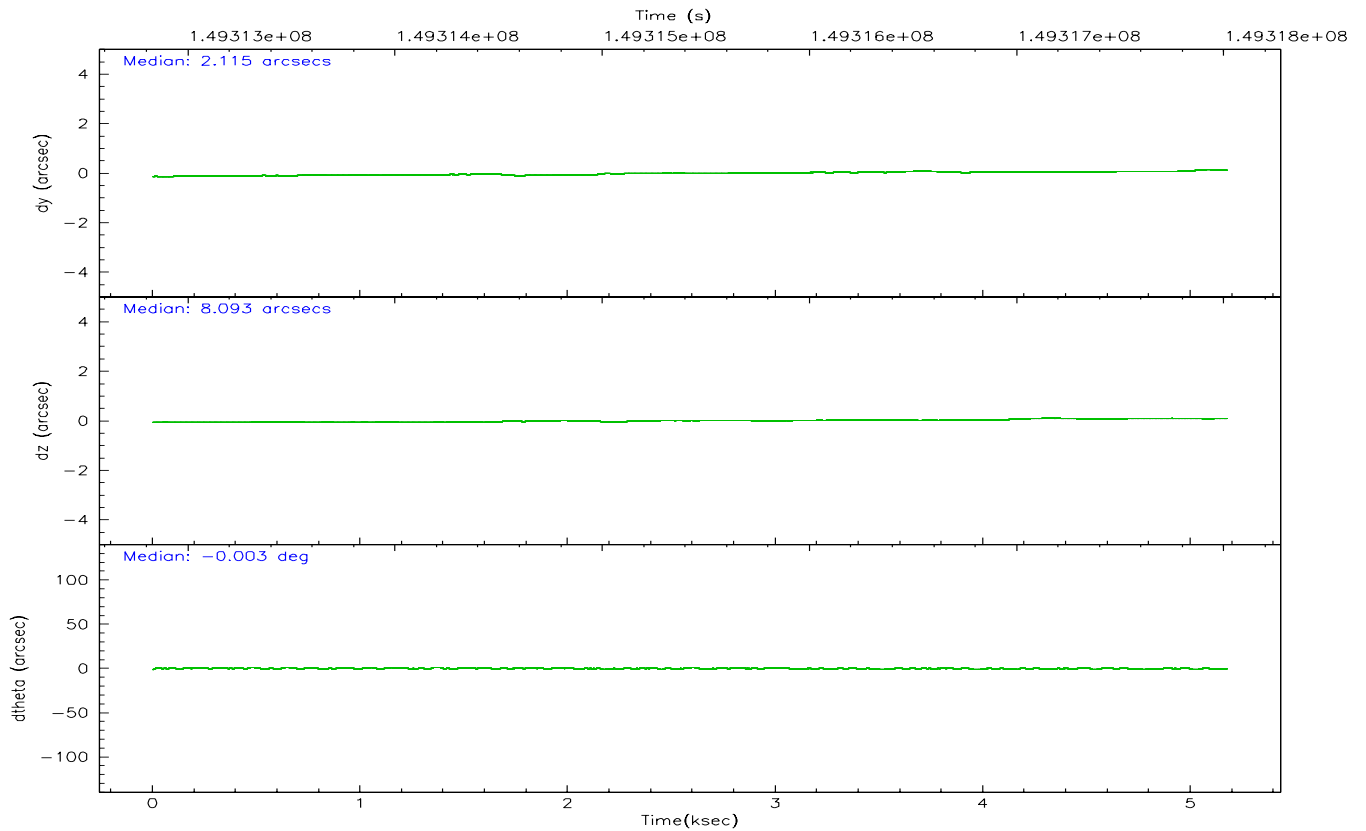
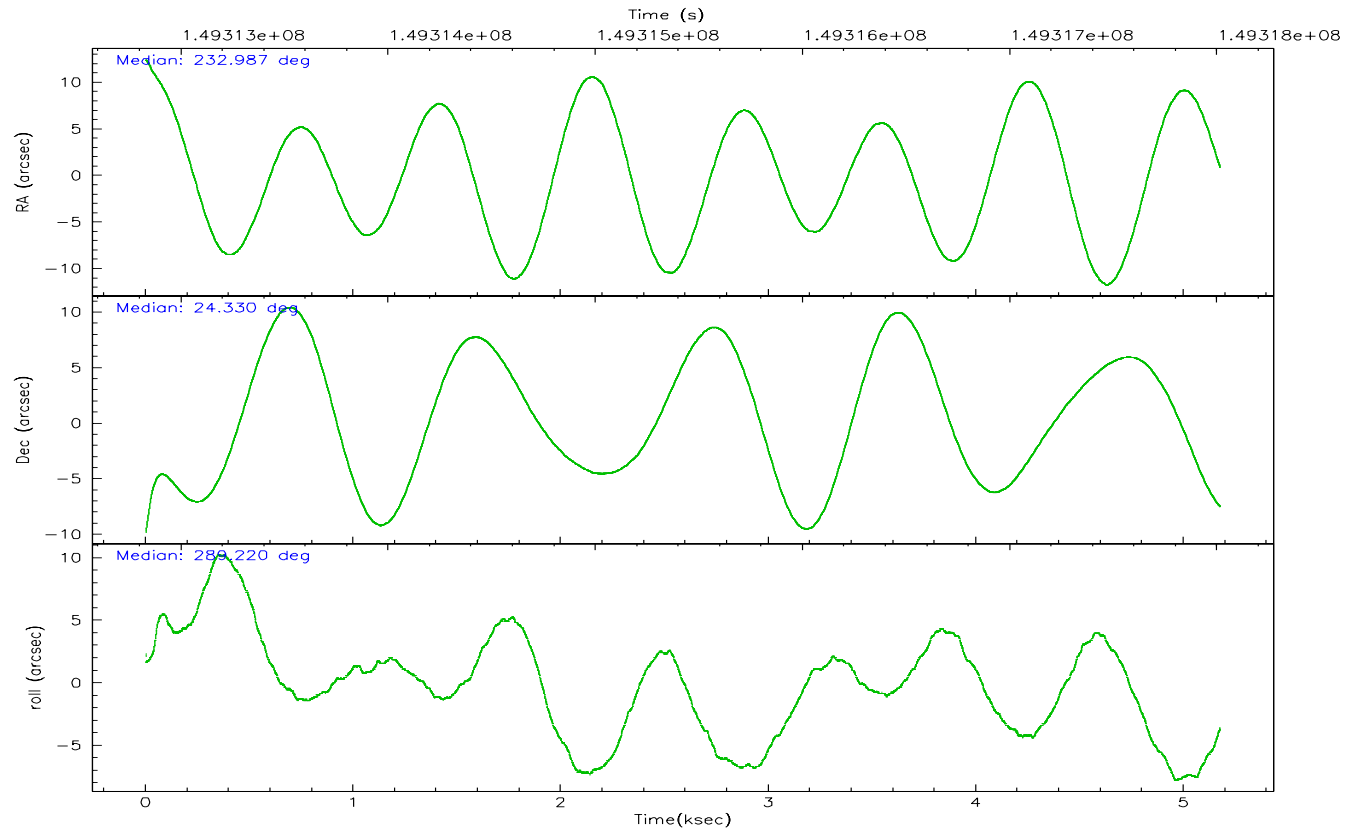
	ccd 2	ccd 3	ccd 5	ccd 6	ccd 7	ccd 8
grade 0 events	947	985	5817	890	1045	1464
	4%	4%	17%	4%	3%	5%
grade 1 events	13	12	60	6	27	8
	0%	0%	0%	0%	0%	0%
grade 2 events	432	396	4784	467	2815	1013
	2%	1%	14%	2%	10%	3%
grade 3 events	271	255	317	263	756	505
	1%	1%	0%	1%	2%	1%
grade 4 events	261	263	286	263	751	499
	1%	1%	0%	1%	2%	1%
grade 5 events	734	804	1280	843	1756	1093
	3%	4%	3%	4%	6%	4%
grade 6 events	371	382	6689	416	5780	1260
	1%	1%	20%	2%	22%	4%
grade 7 events	16816	16970	13723	17427	13213	19660
	84%	84%	41%	84%	50%	77%

## 2.2 Compared Parameters

Parameter	Planned	Actual	Parameter	Planned	Actual
Instrument	ACIS	ACIS	Obspar format version number	6	6
Detector	ACIS-235678	ACIS-235678	Obspar file type	PREDICTED	ACTUAL
Grating	NONE	NONE	Obspar update status	NONE	UPDATED
Data mode	FAINT	FAINT	Number of optional ACIS chips dropped	0	0
Observation mode	POINTING	POINTING	On-chip summing requested	N	N
Pointing RA	232.964207	232.9871870197807	Subarray requested	1/2	1/2
Pointing Dec	24.347402	24.32982178602731	Subarray start row	0	257
Pointing Roll	289.082194	289.2293278951014	Subarray row count	1024	512
SIM focus pos (mm)	-0.684267	-0.6828225247311905	Alternating exposures requested	N	N
SIM defocus (mm)	0	0.001444936568705701	Primary exposure time	0.000000	1.8
SIM translation stage pos (mm)	-190.132523	-190.1400660498719			
SIM translation stage offset (mm)	0	0.00754346686406393			
Observation start time	149313011.184000	149311807.21557			
Observation start date	2002-09-25T03:49:07	2002-09-25T03:30:07			
Observation end time	149318011.184000	149318528.65334			
Observation end date	2002-09-25T05:12:27	2002-09-25T05:22:08			
Read mode	TIMED	TIMED			

### 2.3 Aspect





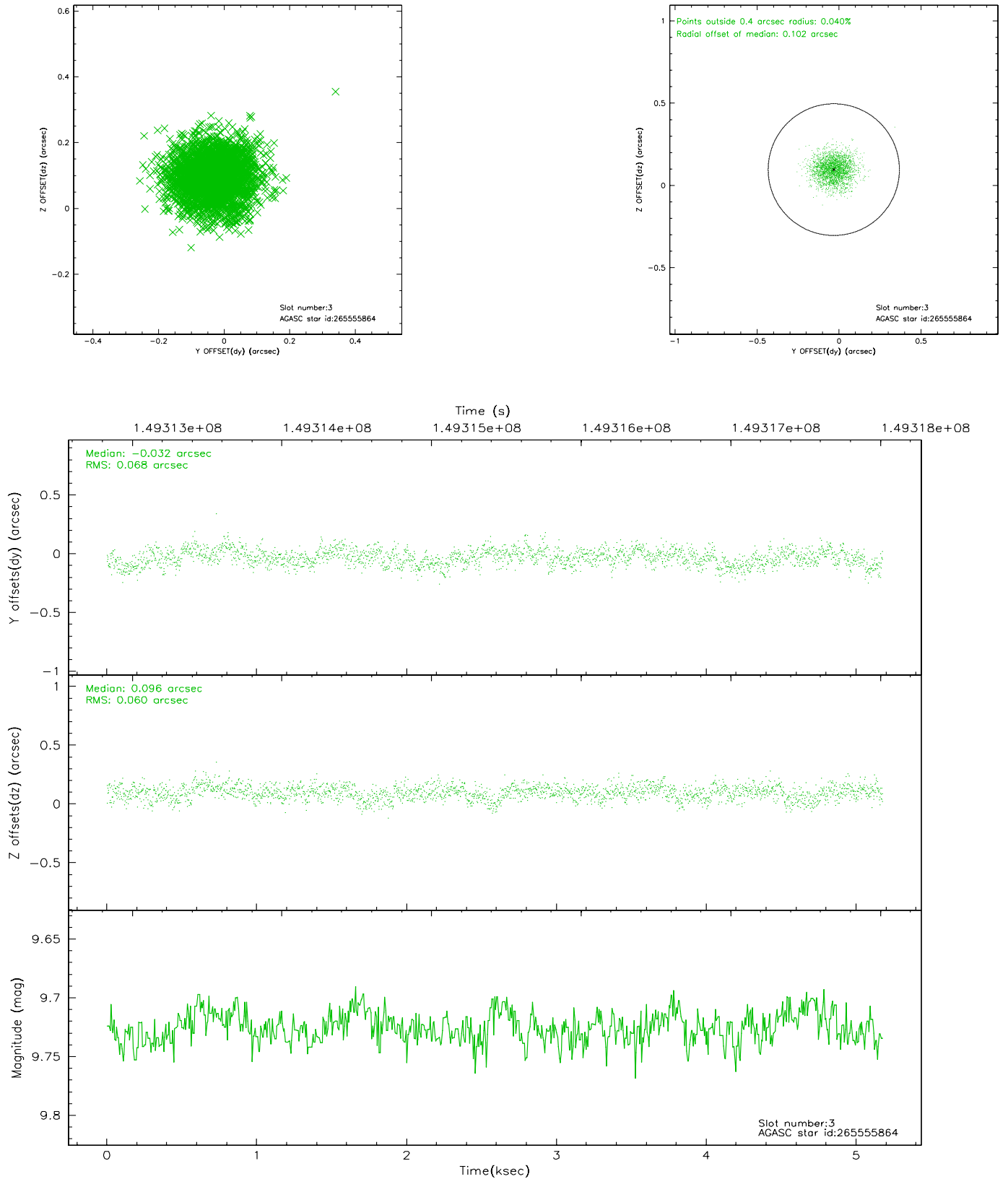
### Slot Statistics

slot	status	id	mag	n_pts	med_dy	med_dz	dr1	dr2	ra	dec	mean_y	mean_z
0	FID	ACIS-S-2	7.11	1263	-0.010	0.014	0.007	0.012	0.000000	0.000000	-754.75	-1729.27
1	FID	ACIS-S-4	7.20	1263	-0.057	0.001	0.005	0.010	0.000000	0.000000	2157.97	177.96
2	FID	ACIS-S-5	7.24	1263	0.036	-0.006	0.006	0.011	0.000000	0.000000	-1806.02	173.00
3	GUIDE	265555864	9.73	2524	-0.032	0.096	0.097	0.154	233.574285	23.968561	1941.19	1452.99
4	GUIDE	265558384	9.66	2525	0.012	0.035	0.085	0.137	232.899731	24.051291	939.54	-547.71
5	GUIDE	265560536	8.08	2526	0.062	-0.110	0.069	0.113	232.543821	23.755517	1560.31	-2004.76
6	GUIDE	265553400	7.95	2526	-0.095	-0.079	0.063	0.099	232.475560	23.817136	1276.81	-2144.50
7	GUIDE	265557848	9.54	2524	0.048	0.065	0.122	0.204	233.014998	24.084951	948.56	-151.45

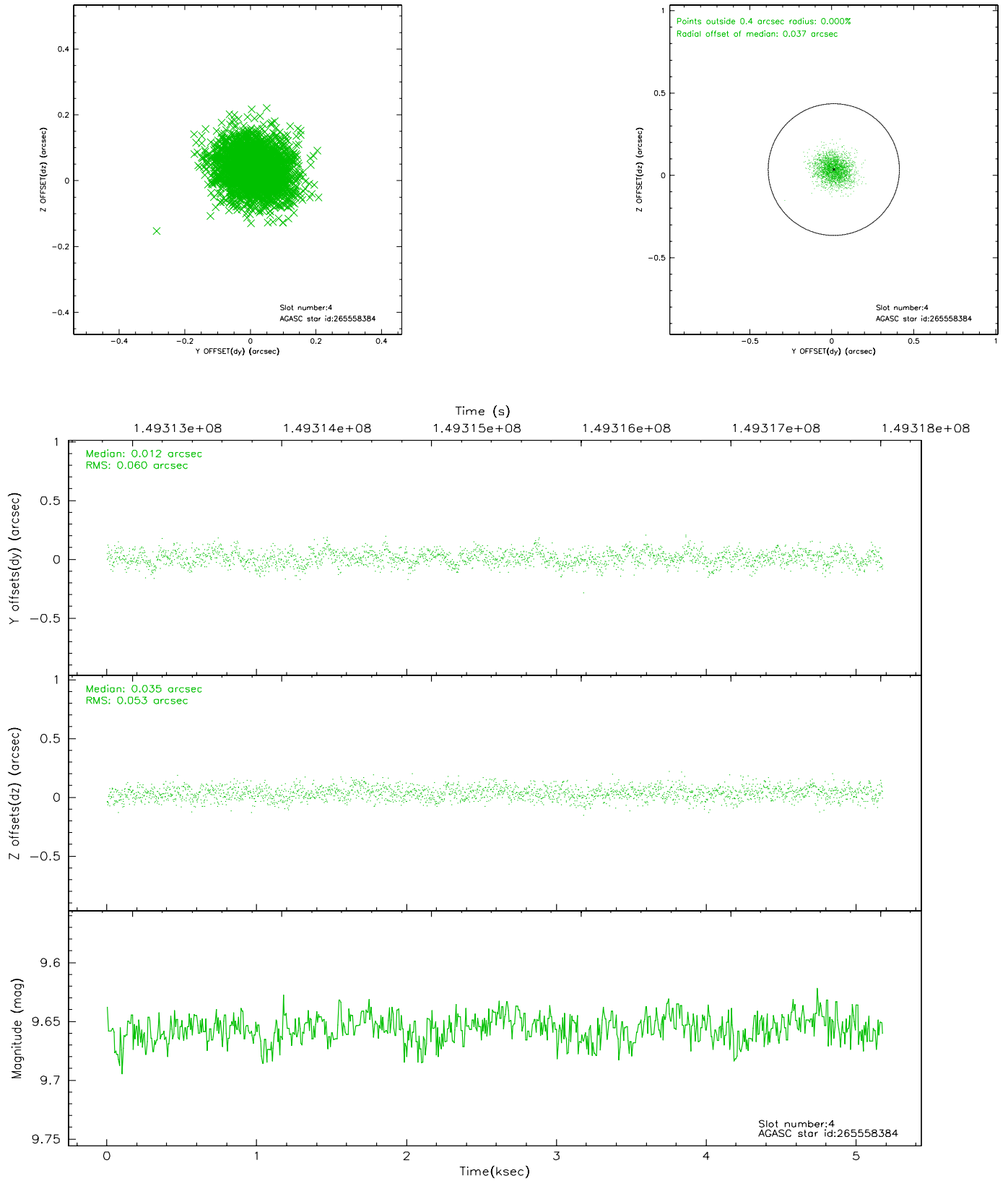


## 2.4 Star Slots

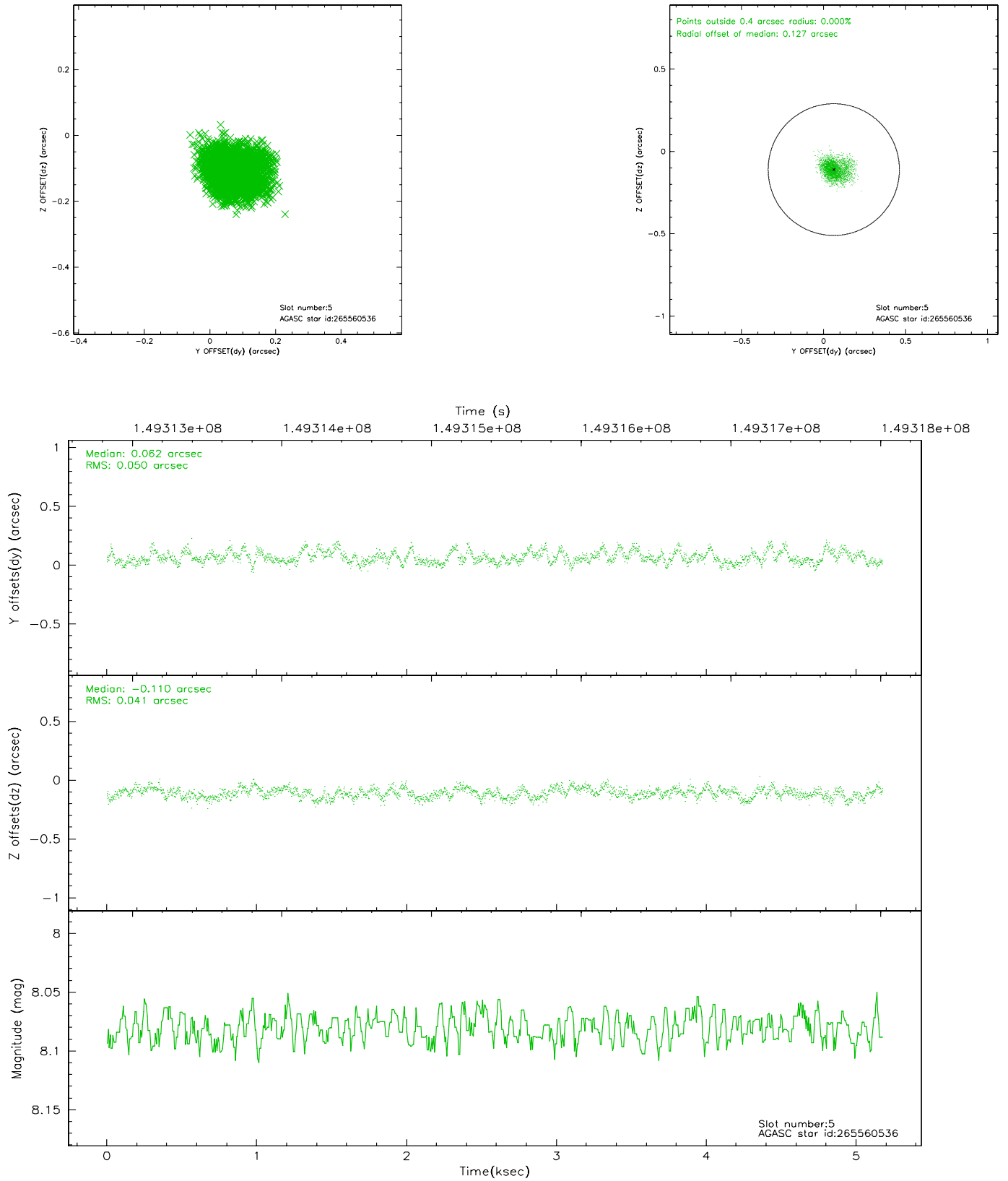
### 2.4.1 Slot 3



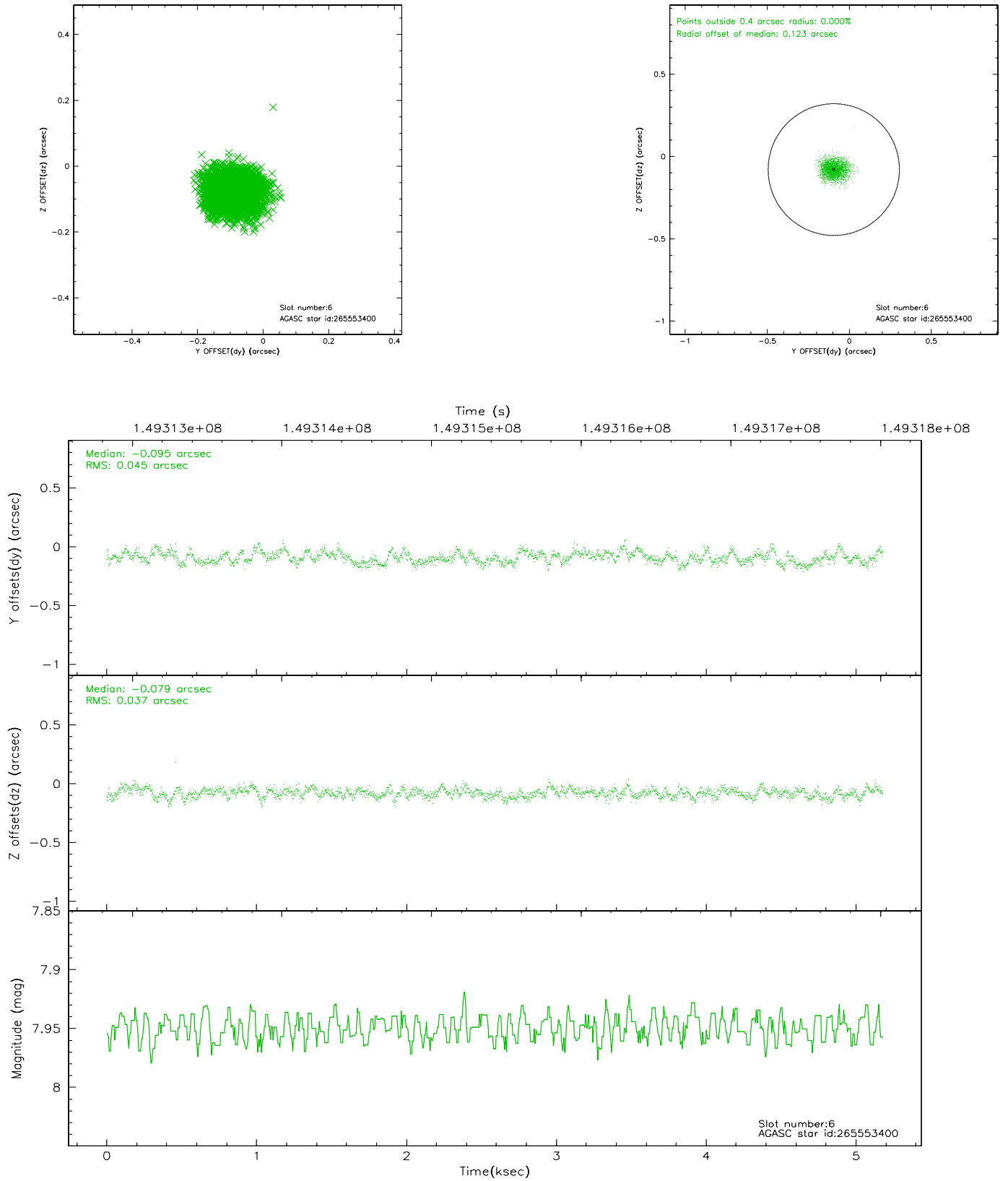
## 2.4.2 Slot 4



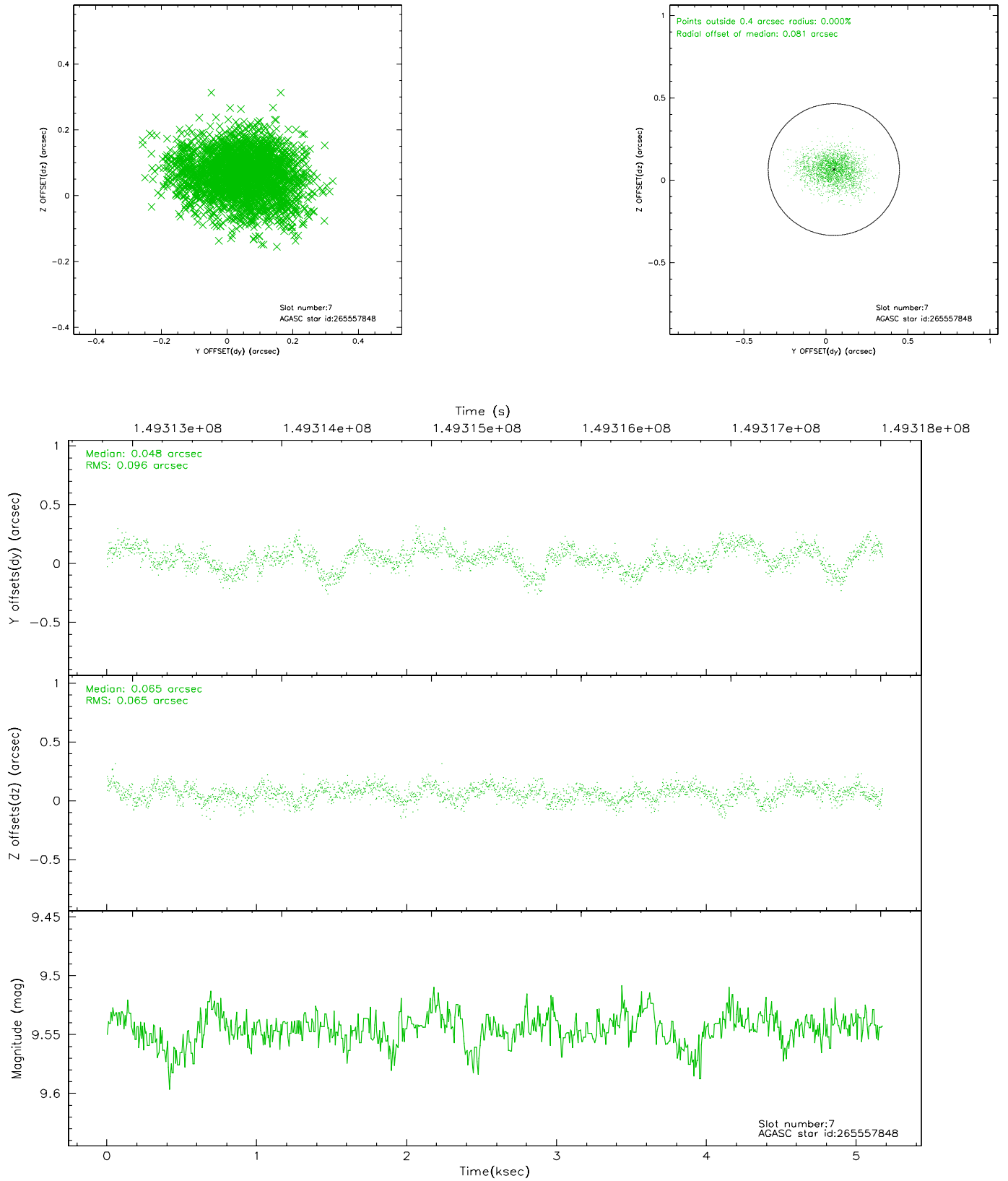
### 2.4.3 Slot 5



## 2.4.4 Slot 6

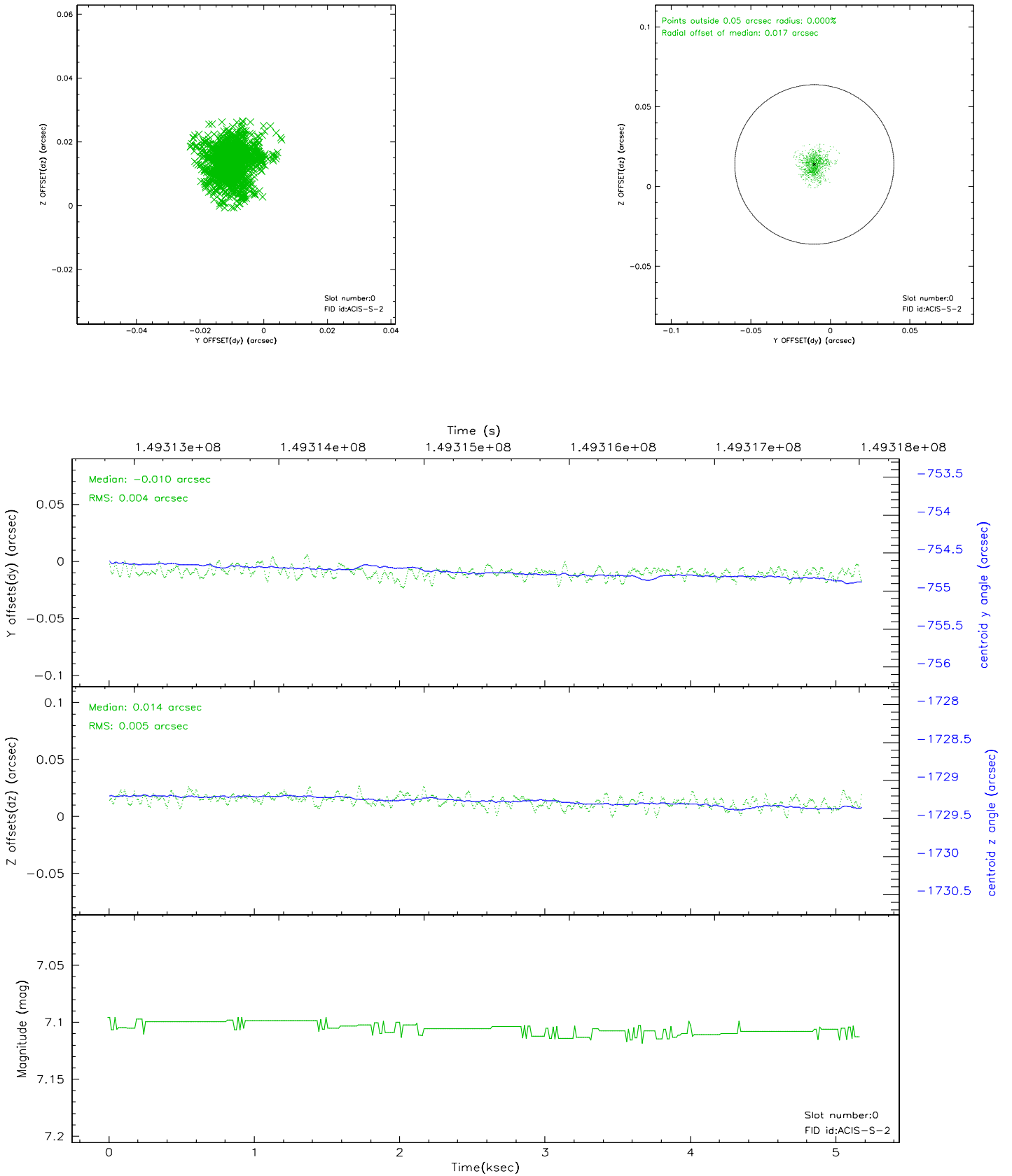


## 2.4.5 Slot 7

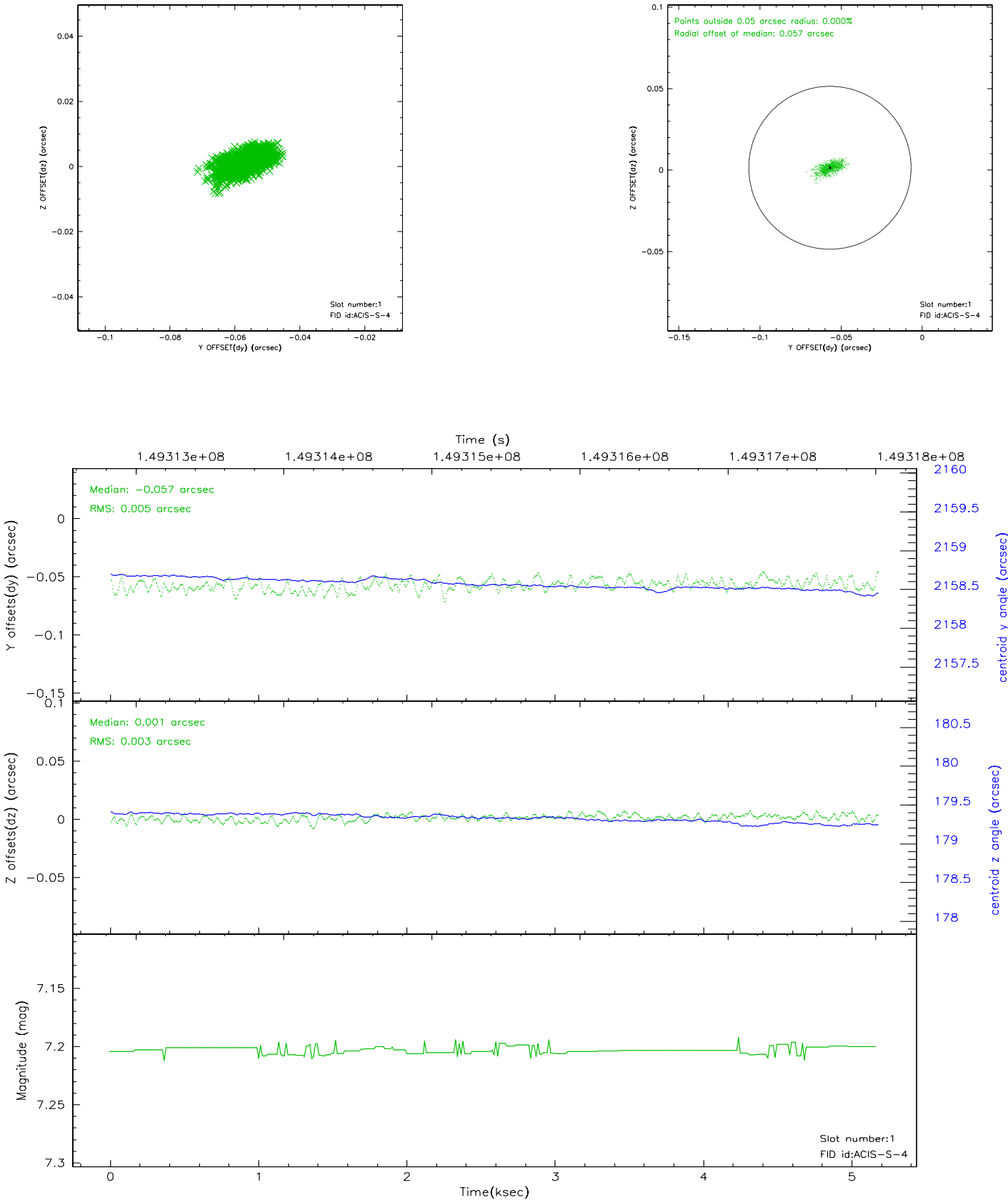


## 2.5 FID Slots

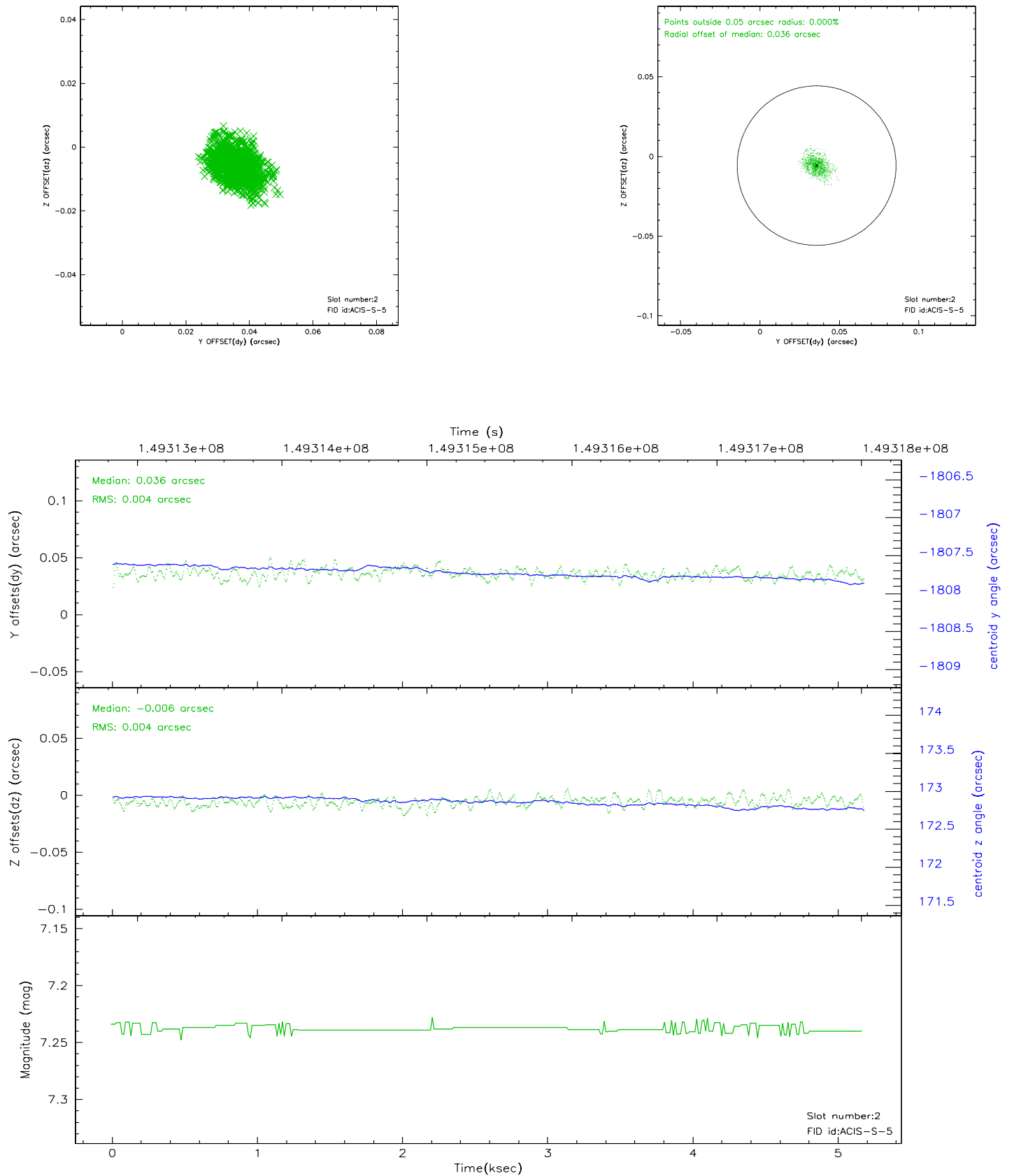
### 2.5.1 Slot 0



2.5.2 Slot 1

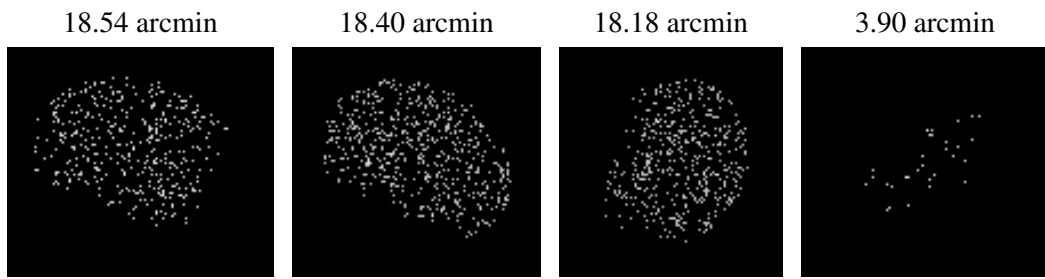


### 2.5.3 Slot 2





### 3 Point Sources



## A Summary

### A.1 Status

V&V Scientist	Jen Lauer
V&V Date (YYYY-MM-DD)	2006.10.04
V&V Edition	1
V&V Disposition and Status	OK
V&V Charge Time	5.171

### A.2 Comments