

V&V Reference Report

L2 ASCDS Version : 7.6.10

Observation 3166 - L2 Version 001
Chandra X-Ray Center

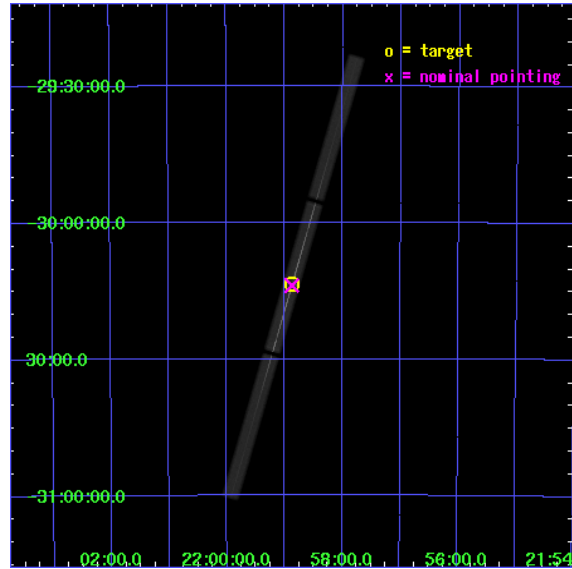
L2 Processing Date : Jan 20 2007

Contents

1	Front	2
2	OBI	3
2.1	OBI	3
2.1.1	Images	3
2.1.2	Parameters	4
2.1.3	Events	4
2.2	Compared Parameters	5
2.3	Aspect	6
2.4	Star Slots	9
2.4.1	Slot 3	9
2.4.2	Slot 4	10
2.4.3	Slot 5	11
2.4.4	Slot 6	12
2.4.5	Slot 7	13
2.5	FID Slots	14
2.5.1	Slot 0	14
2.5.2	Slot 1	15
2.5.3	Slot 2	16
3	Gratings	17
3.1	LETG Arm	17
A	Summary	19
A.1	Status	19
A.2	Comments	19

1 Front

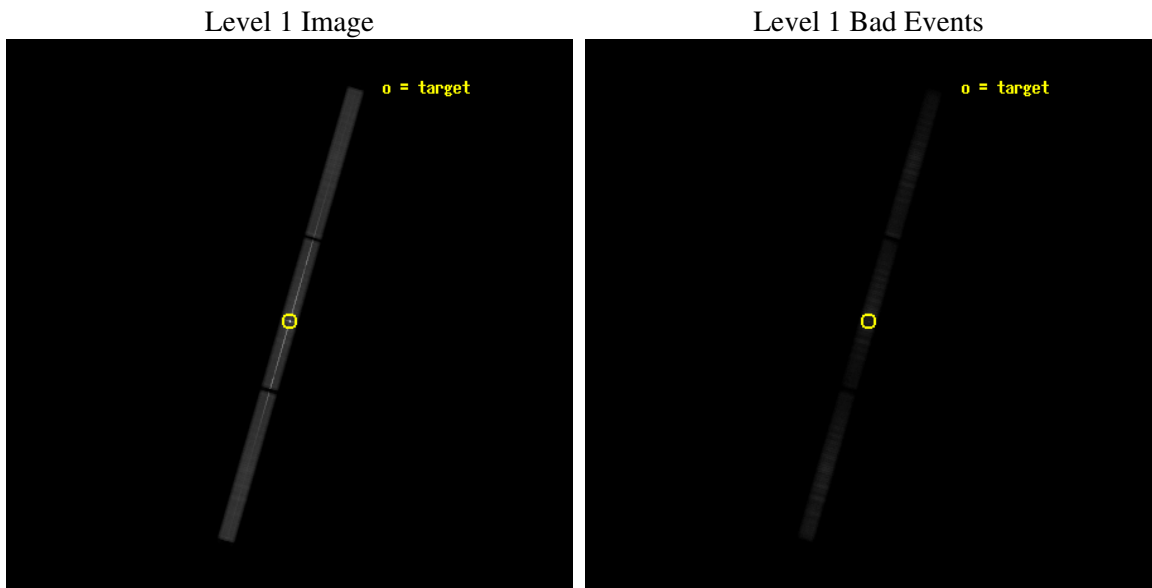
seq_num	790060
obs_id	3166
title	AO3 CALIBRATION OBSERVATIONS OF PKS2155-304
observer	Dr. CXC Calibration
object	PKS2155-304
ra_targ	329.716667
dec_targ	-30.225556
ra_nom	329.71800090931
dec_nom	-30.230180692571
roll_nom	286.18331642388
revision	3
ontime	29983.301200241
livetime	29778.544008109
l2events	1692366



2 OBI

2.1 OBI

2.1.1 Images



2.1.2 Parameters

obi_num	1
ascdsver	7.6.10
caldsver	3.3.0
date	2007-01-20T11:19:28
revision	3

sched_exp_time	30000.000000
ontime	29983.301200241
l1events	2355116

2.1.3 Events

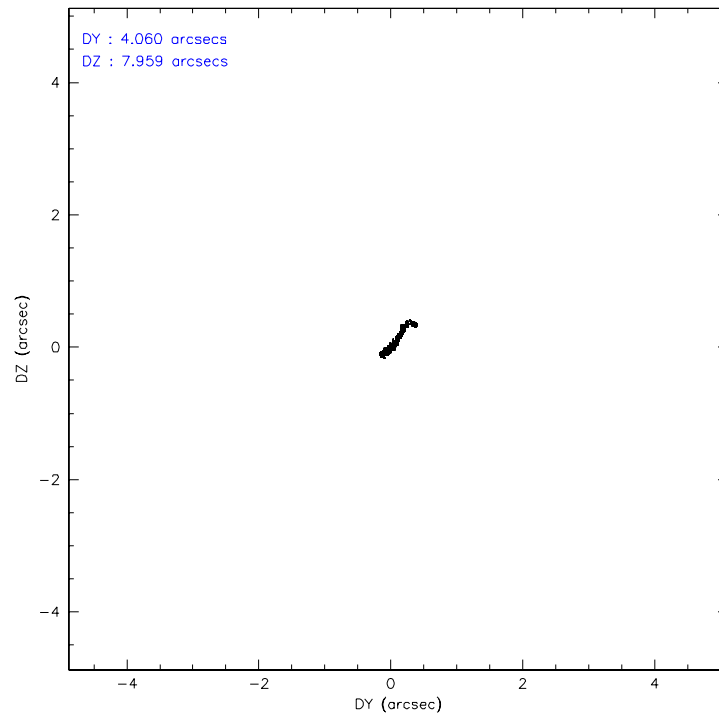
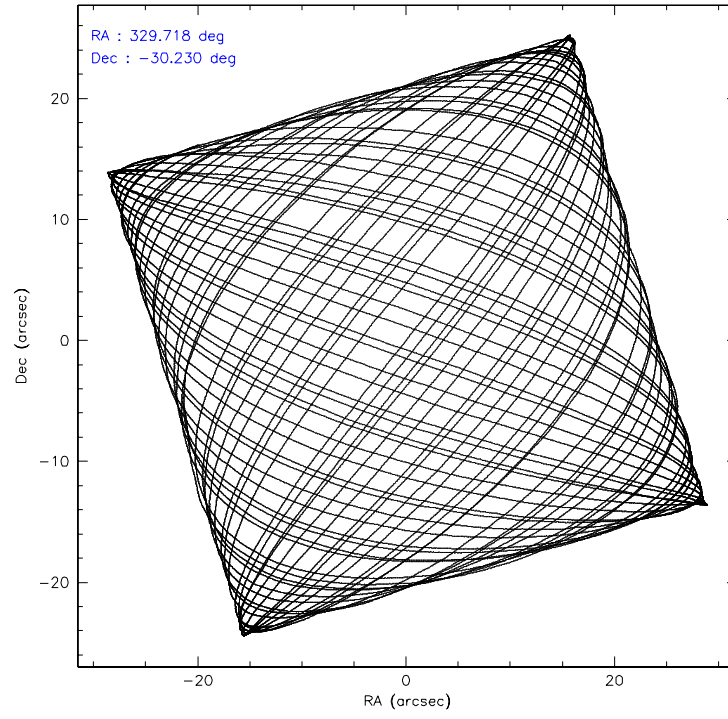
Level 1 Events

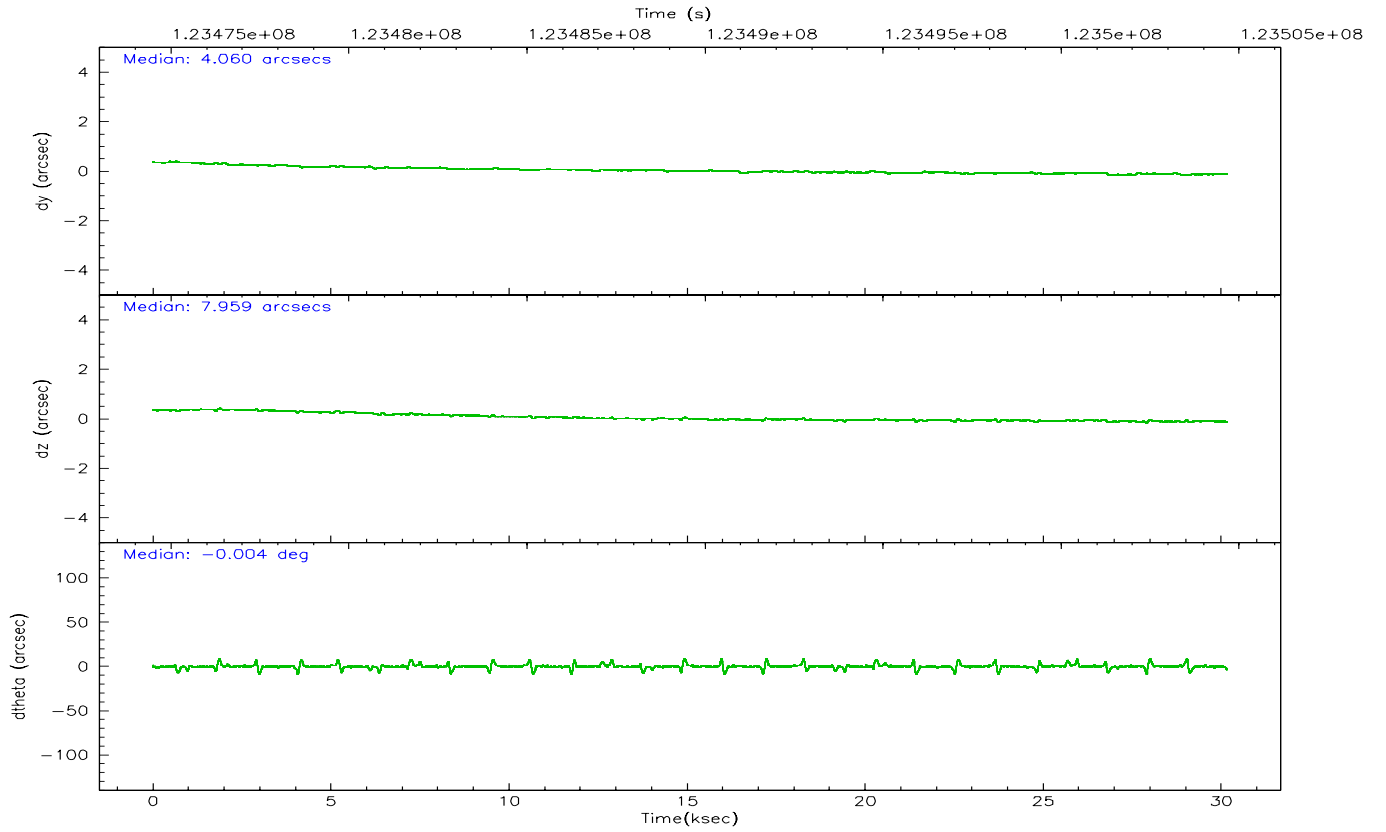
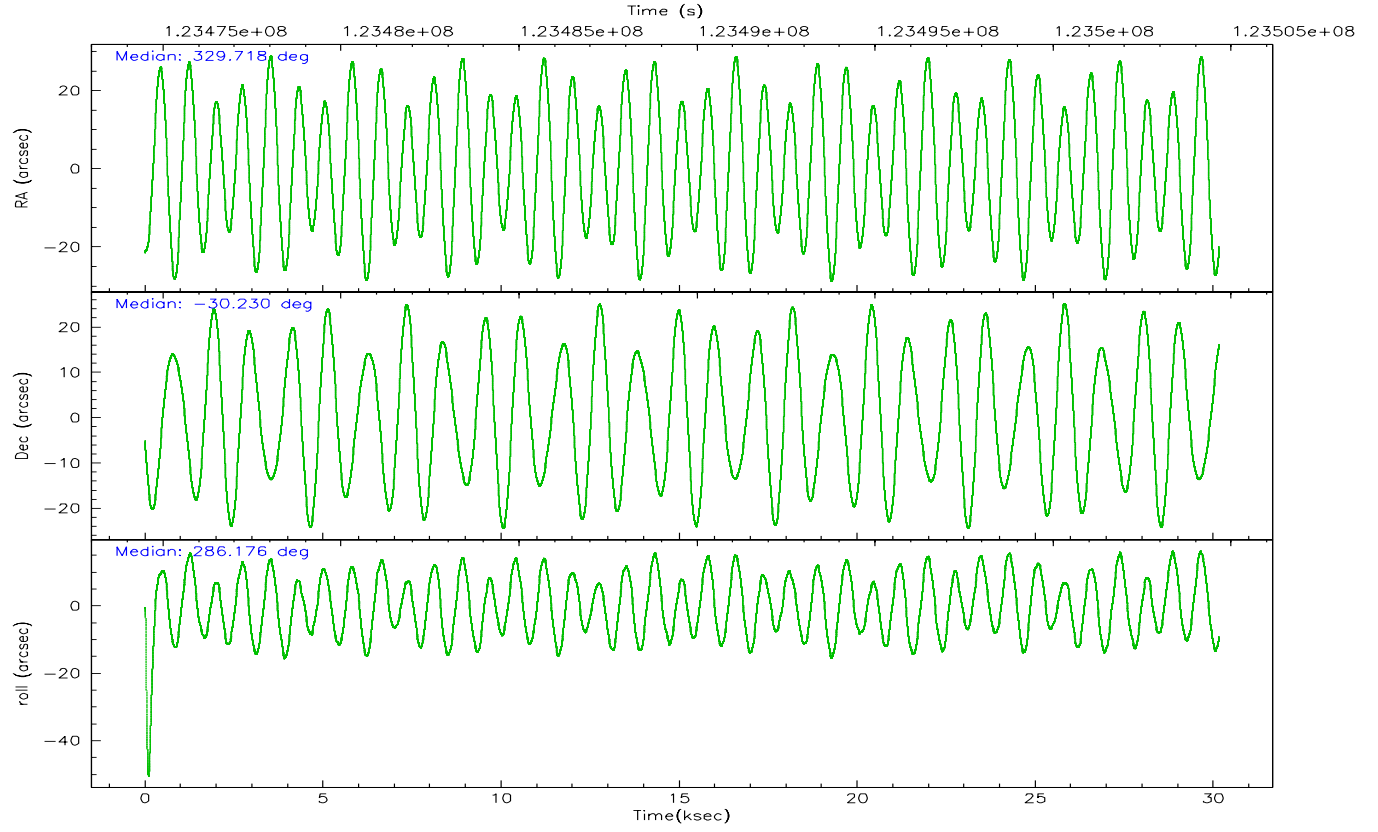
	segment 1	segment 2	segment 3
level 1 events	649771	1040010	665335
rejected events	146296	157892	177788
rejected %	22%	15%	26%

2.2 Compared Parameters

Parameter	Planned	Actual	Parameter	Planned	Actual
Instrument	HRC	HRC	Obspar format version number	6	6
Detector	HRC-S	HRC-S	Obspar file type	PREDICTED	ACTUAL
Grating	LETG	LETG	Obspar update status	NONE	UPDATED
Data mode	OBSERVING	OBSERVING			
Observation mode	POINTING	POINTING			
Pointing RA	329.693041	329.7180009093124			
Pointing Dec	-30.211336	-30.23018069257102			
Pointing Roll	286.103396	286.1833164238783			
Window start time	122169664.184000	122169664.184000			
Window stop time	124761664.184000	124761664.184000			
SIM focus pos (mm)	-1.429586	-1.428180813131781			
SIM defocus (mm)	0.1037507710433287	0.1051558262725154			
SIM translation stage pos (mm)	250.455976	250.466033080201			
SIM translation stage offset (mm)	0	-0.01005468664627074			
Observation start time	123474664.184000	123474220.65141			
Observation start date	2001-11-30T02:30:00	2001-11-30T02:23:40			
Observation end time	123504664.184000	123504906.59013			
Observation end date	2001-11-30T10:50:00	2001-11-30T10:55:06			

2.3 Aspect



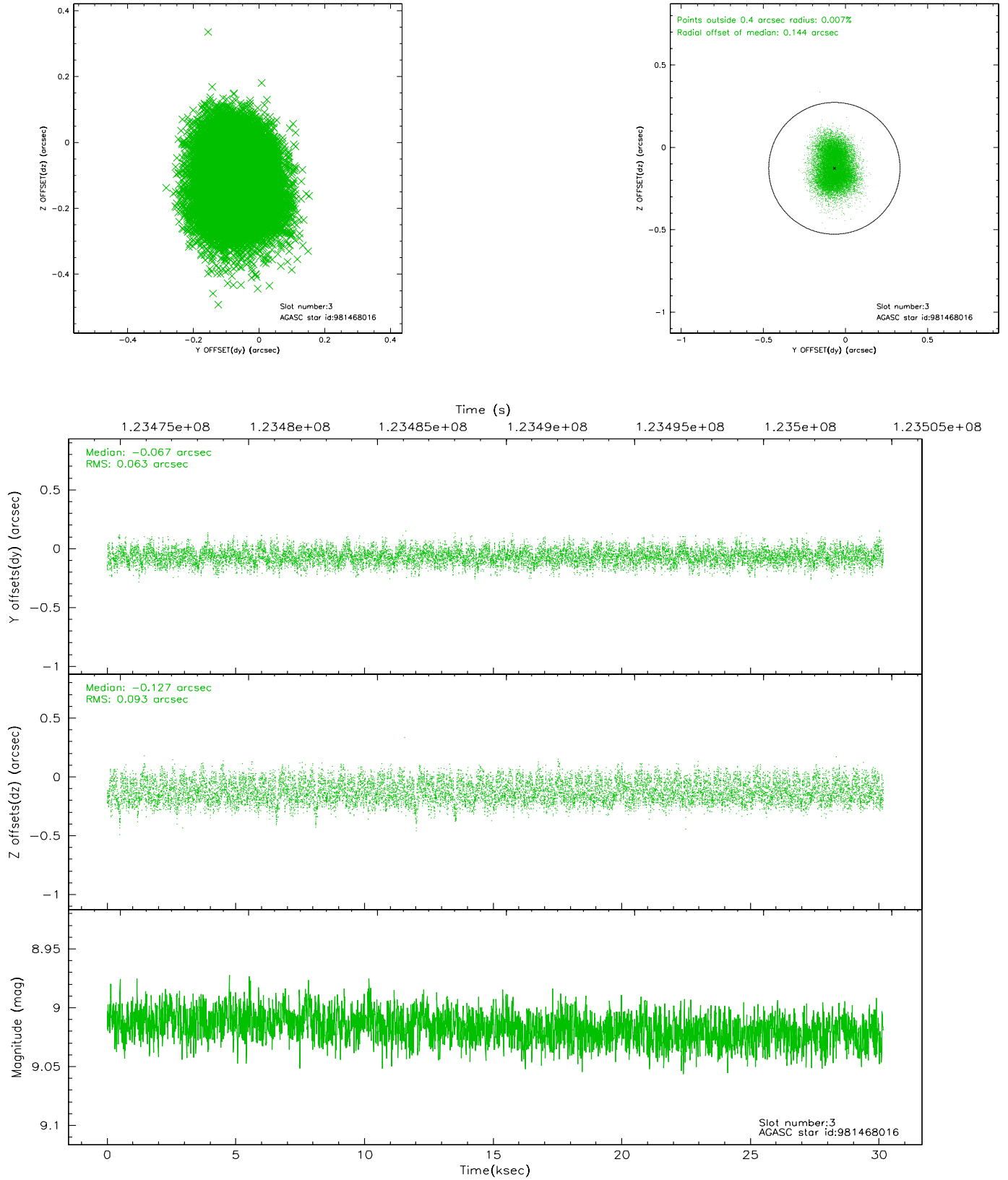


Slot Statistics

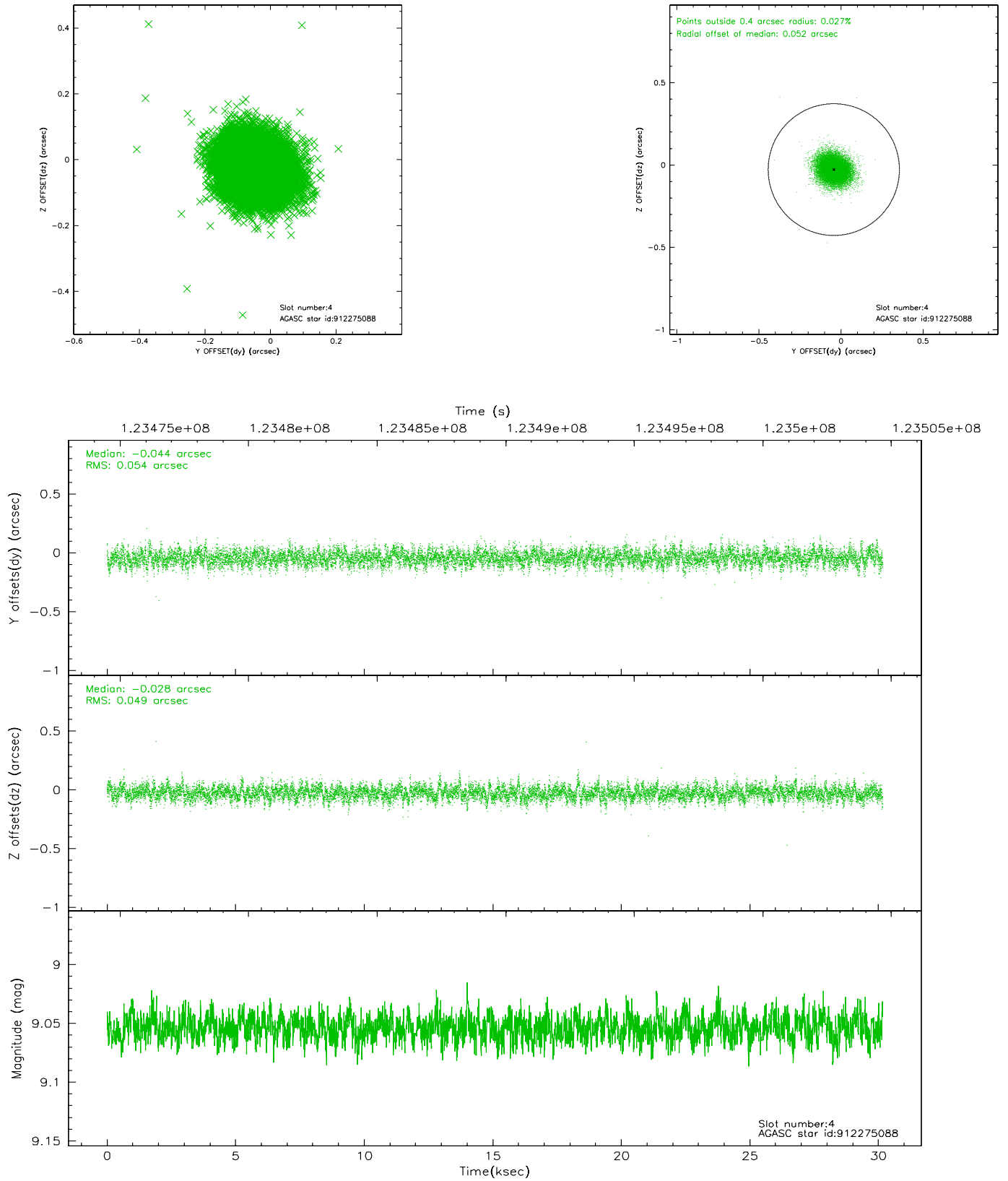
slot	status	id	mag	n_pts	med_dy	med_dz	dr1	dr2	ra	dec	mean_y	mean_z
0	FID	HRC-S-1	6.99	7358	0.157	-0.099	0.011	0.023	0.000000	0.000000	-1158.14	-456.59
1	FID	HRC-S-2	6.99	7358	0.069	-0.086	0.007	0.033	0.000000	0.000000	1241.29	-449.25
2	FID	HRC-S-3	7.01	7357	0.164	-0.118	0.011	0.027	0.000000	0.000000	-1160.69	572.87
3	GUIDE	981468016	9.02	14713	-0.067	-0.127	0.121	0.186	328.842457	-30.034984	-1335.45	-2373.44
4	GUIDE	912275088	9.05	14714	-0.044	-0.028	0.077	0.125	329.619228	-29.738698	-1698.75	250.25
5	GUIDE	981478152	9.41	14707	0.003	0.110	0.082	0.135	329.415589	-30.057192	-771.87	-676.54
6	GUIDE	981468128	9.37	14710	0.055	0.015	0.094	0.155	329.756350	-30.158334	-128.52	242.63
7	GUIDE	981469488	9.61	14702	0.051	0.024	0.098	0.158	329.261199	-30.045155	-945.34	-1127.38

2.4 Star Slots

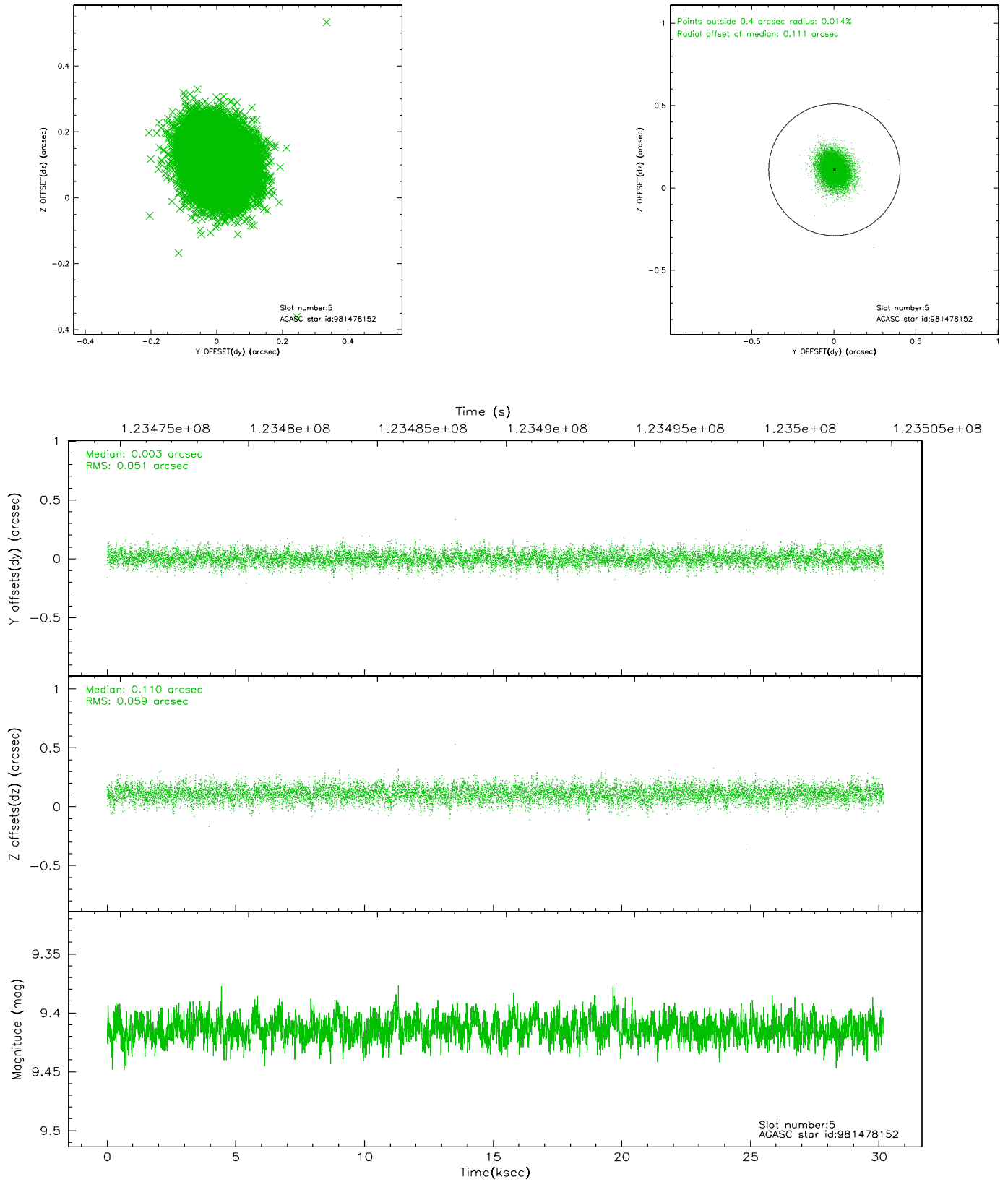
2.4.1 Slot 3



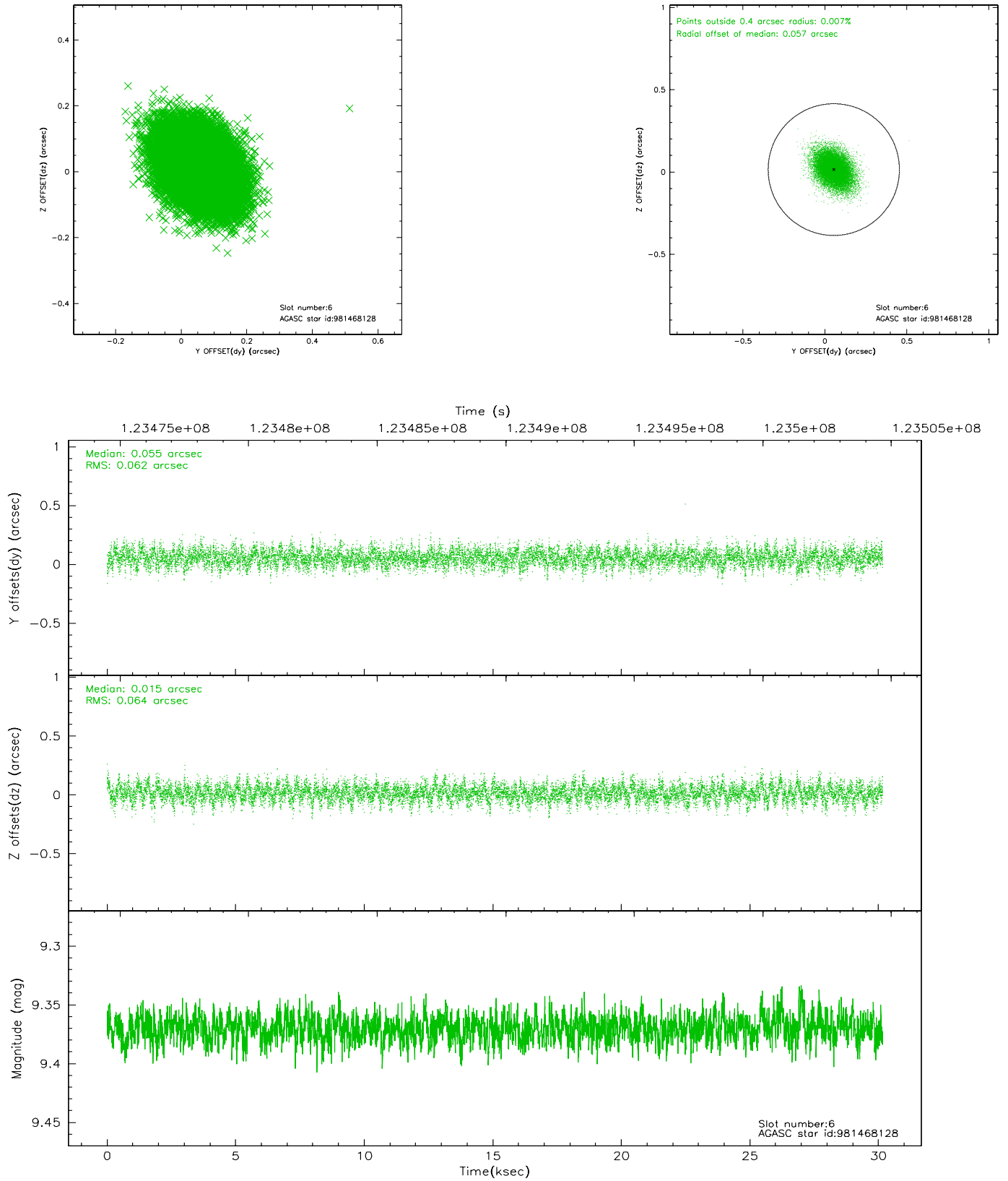
2.4.2 Slot 4



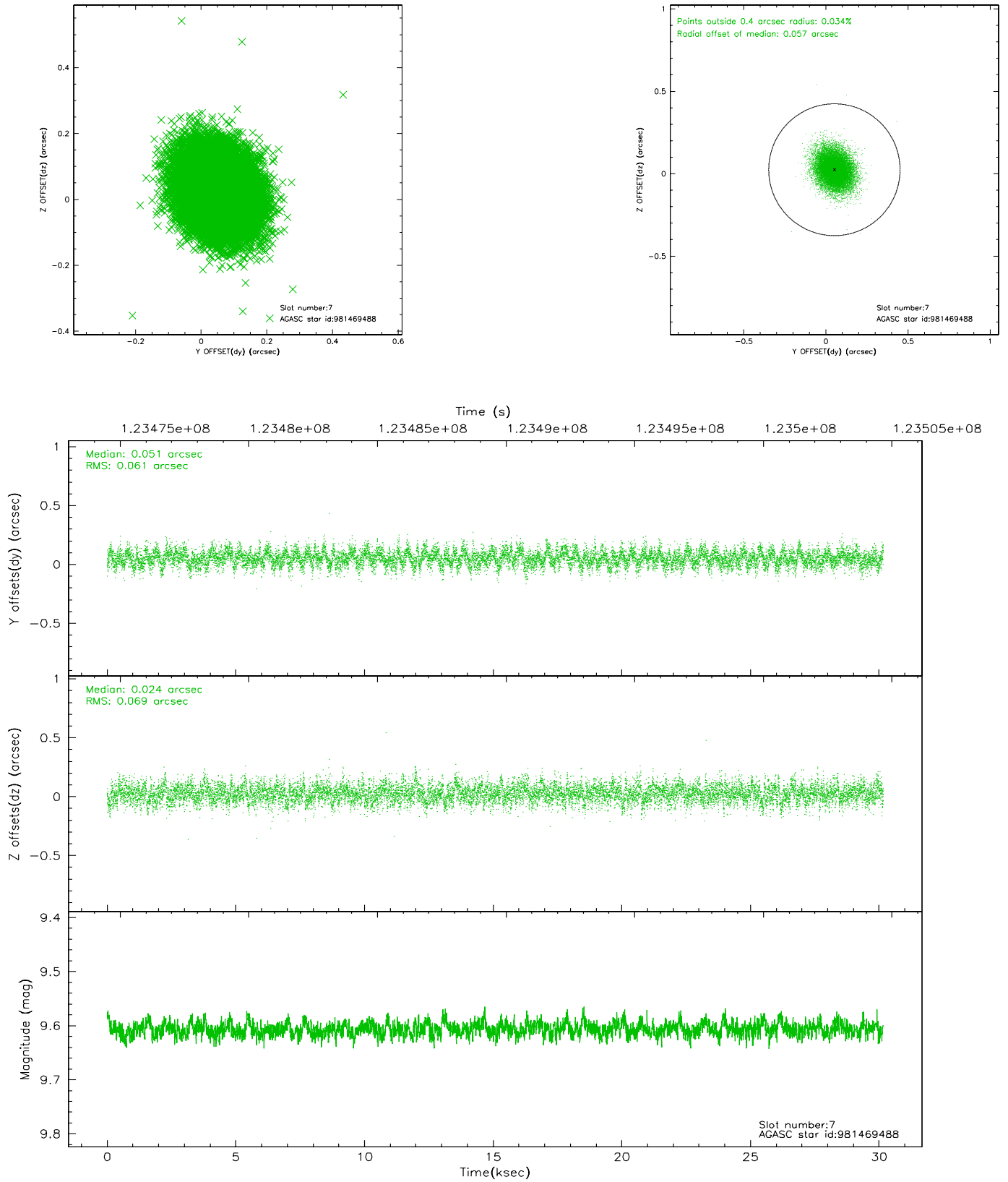
2.4.3 Slot 5



2.4.4 Slot 6

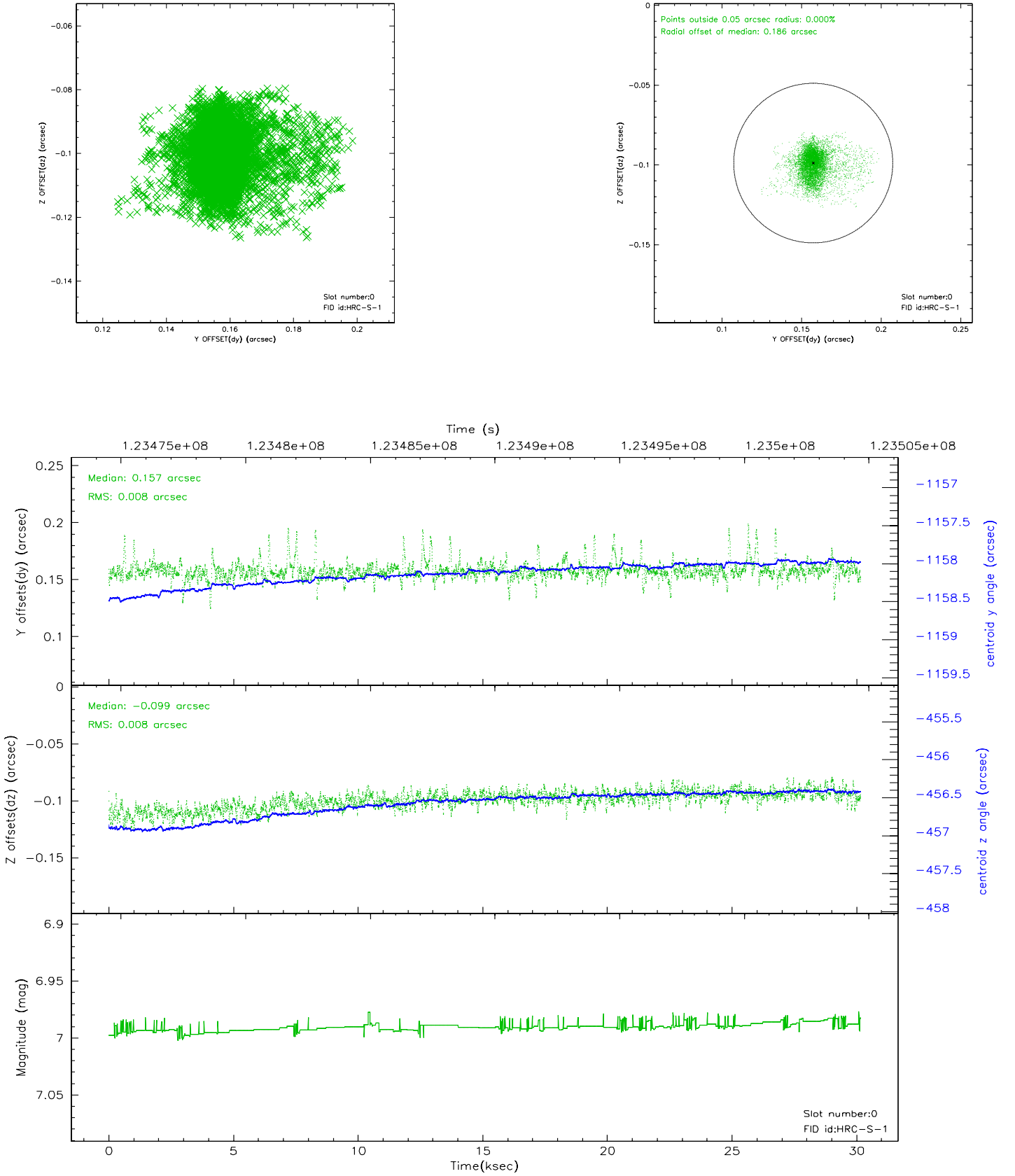


2.4.5 Slot 7

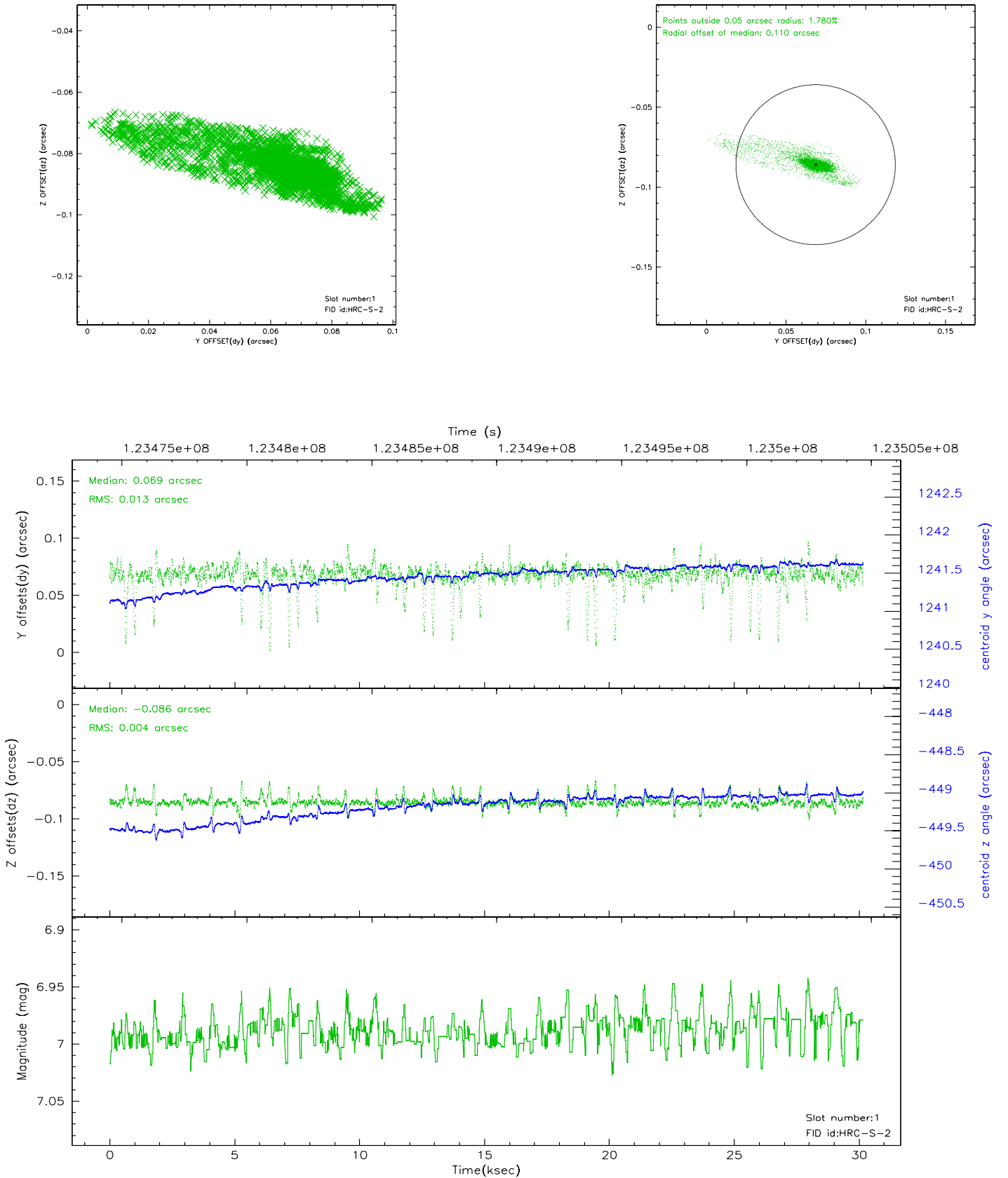


2.5 FID Slots

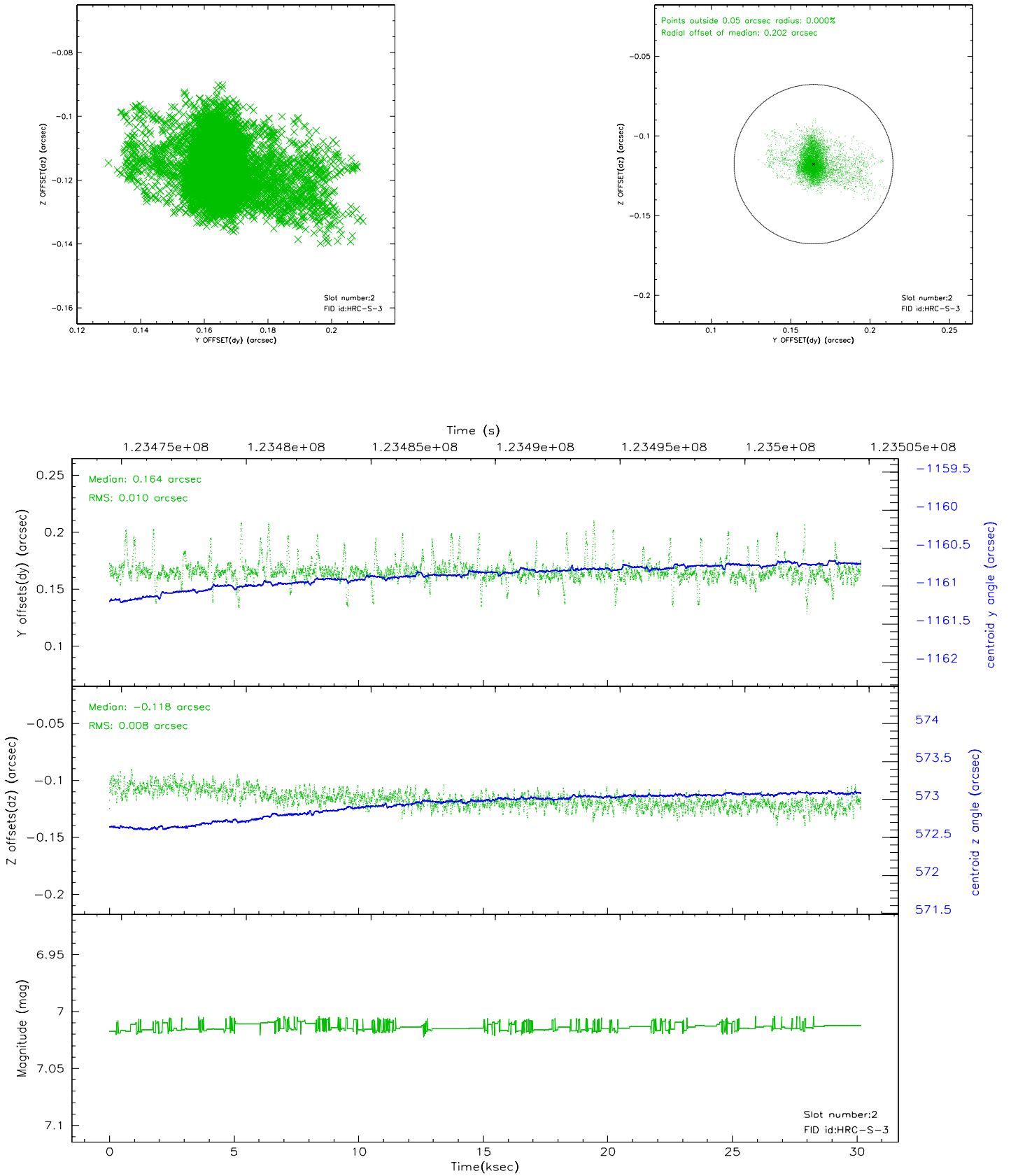
2.5.1 Slot 0



2.5.2 Slot 1

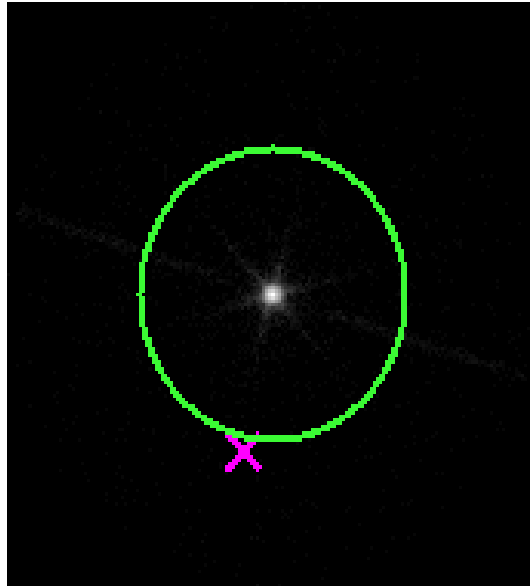


2.5.3 Slot 2



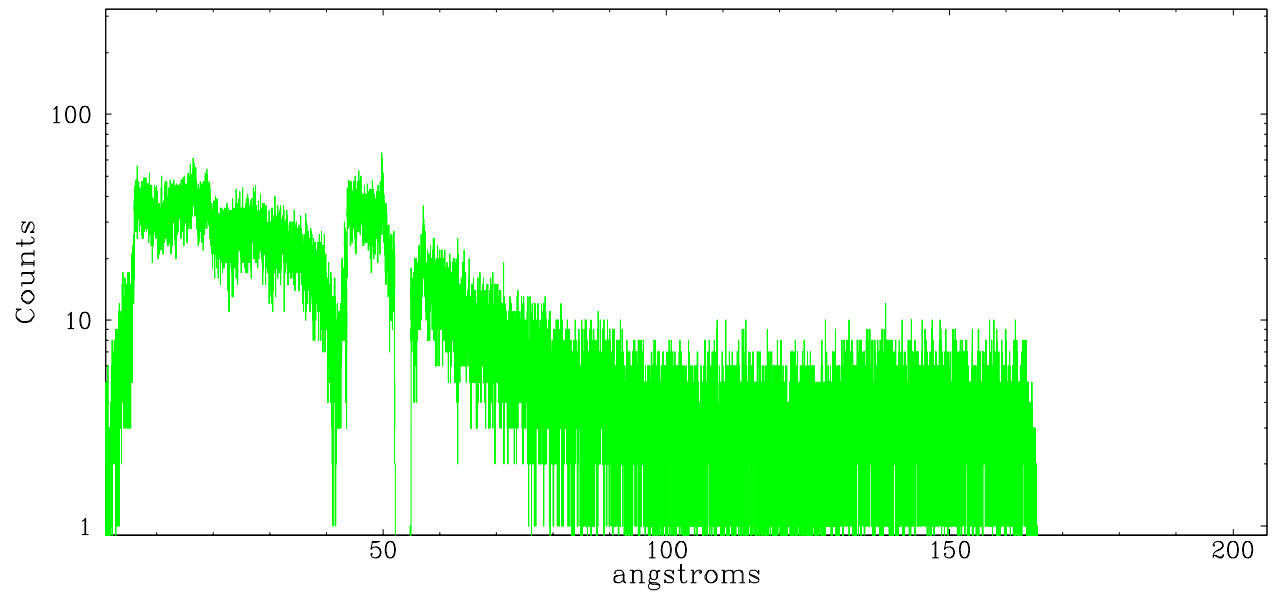
3 Gratings

3.1 LETG Arm

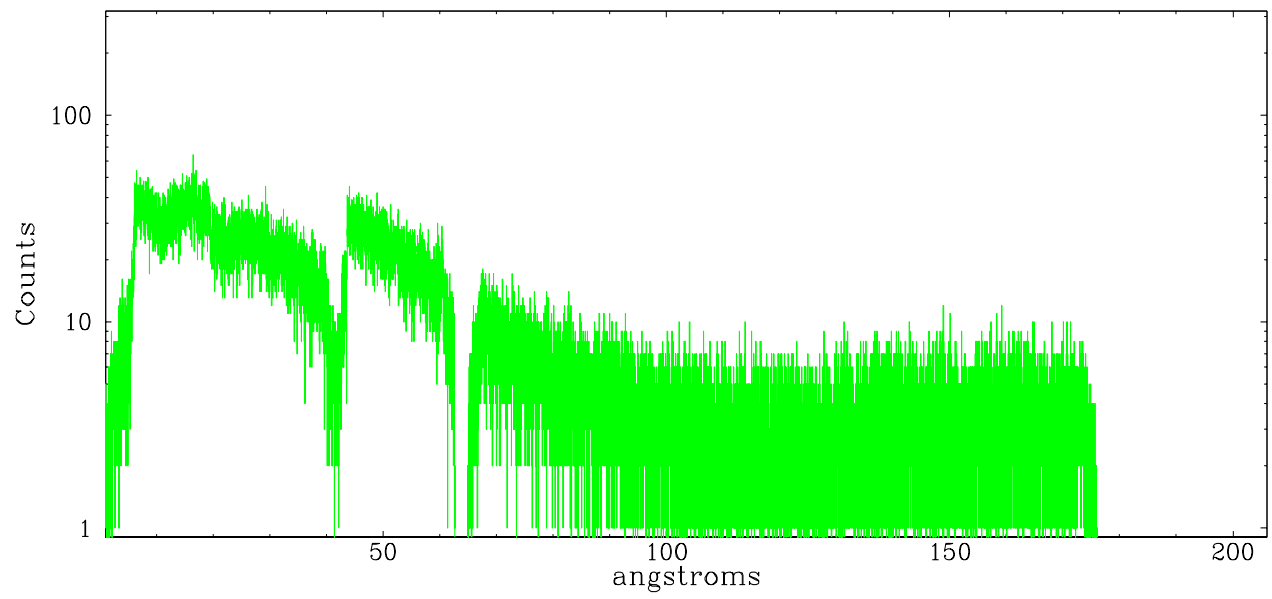


LETG Zero Order

leg order -1



leg order +1



A Summary

A.1 Status

V&V Scientist	Joy Nichols
V&V Date (YYYY-MM-DD)	2007.03.09
V&V Edition	1
V&V Disposition and Status	OK
V&V Charge Time	29.973

A.2 Comments

The zeroth order is piled up, but the tool `tgdetect` still found the zeroth order position with sufficient accuracy.