

V&V Reference Report

L2 ASCDS Version : 7.6.9

Observation 3076 - L2 Version 001
Chandra X-Ray Center

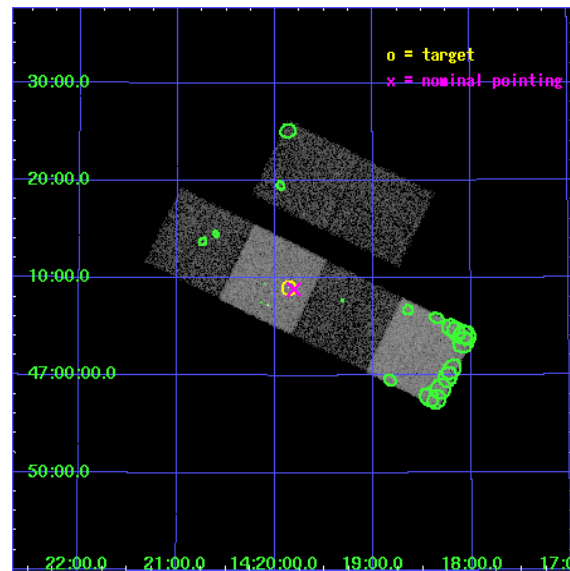
L2 Processing Date : Sep 18 2006

Contents

1	Front	2
2	OBI	3
2.1	OBI	3
2.1.1	Images	3
2.1.2	Bias	3
2.1.3	Parameters	4
2.1.4	Events	4
2.2	Compared Parameters	5
2.3	Aspect	6
2.4	Star Slots	9
2.4.1	Slot 3	9
2.4.2	Slot 4	10
2.4.3	Slot 5	11
2.4.4	Slot 6	12
2.4.5	Slot 7	13
2.5	FID Slots	14
2.5.1	Slot 0	14
2.5.2	Slot 1	15
2.5.3	Slot 2	16
3	Point Sources	17
A	Summary	18
A.1	Status	18
A.2	Comments	18

1 Front

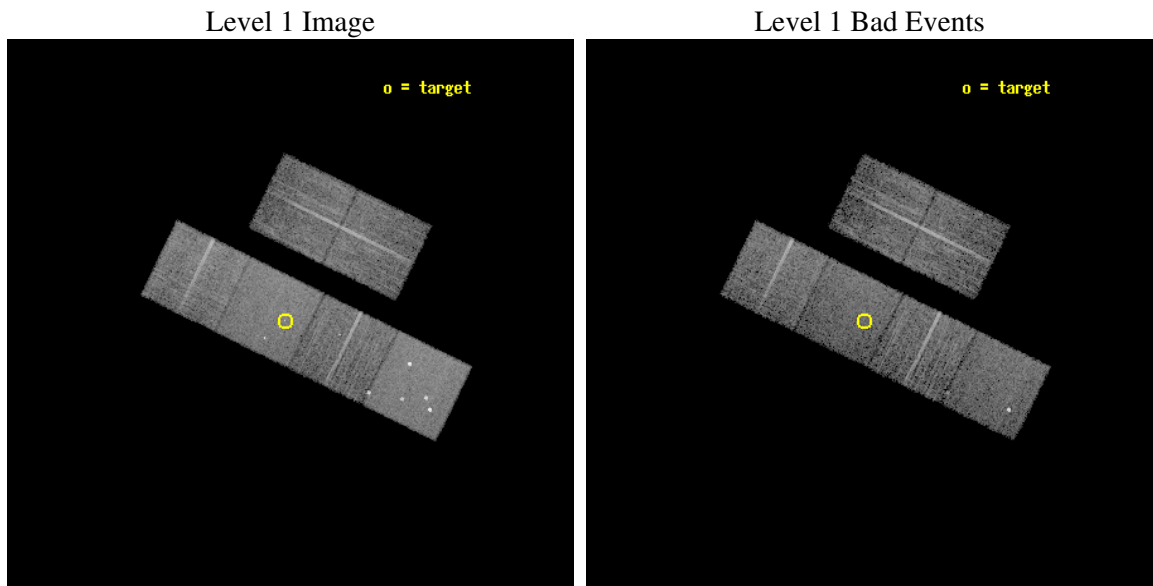
seq_num	700515
obs_id	3076
title	X-RAY WEAK BROAD-LINE QUASARS: ABSORPTION OR INTRINSIC X_RAY WEAKNESS ?
observer	Dr Guido Risaliti
object	HS 1417+4722
dtcycle	0
cycle	P
ra_targ	214.965833
dec_targ	47.15025
ra_nom	214.95214030918
dec_nom	47.147562823389
roll_nom	206.07702005066
revision	2
ontime	7753.5999711156
livetime	7655.4192196239
ontime2	7753.5999711156
ontime3	7753.5999711156
ontime5	7753.5999711156
ontime6	7753.5999711156
ontime7	7753.5999711156
ontime8	7750.3590008616
l2events	74614



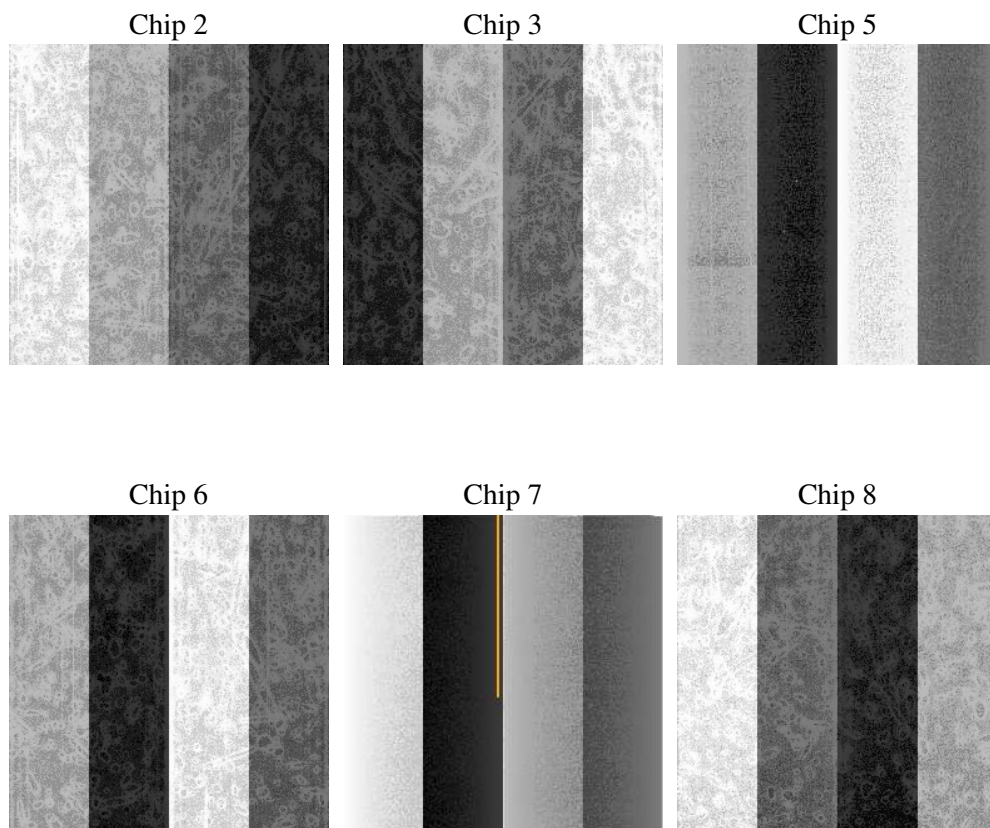
2 OBI

2.1 OBI

2.1.1 Images



2.1.2 Bias



2.1.3 Parameters

obi_num	0
ascdsver	7.6.9
caldbver	3.2.3
date	2006-09-18T03:31:22
revision	2

sched_exp_time	8000.000000
ontime	7758.9534866214
ontime2	7758.9534566998
ontime3	7758.9534566998
ontime5	7758.9534866214
ontime6	7758.9534566998
ontime7	7758.9534866214
ontime8	7755.7123868167
l1events	356690

2.1.4 Events

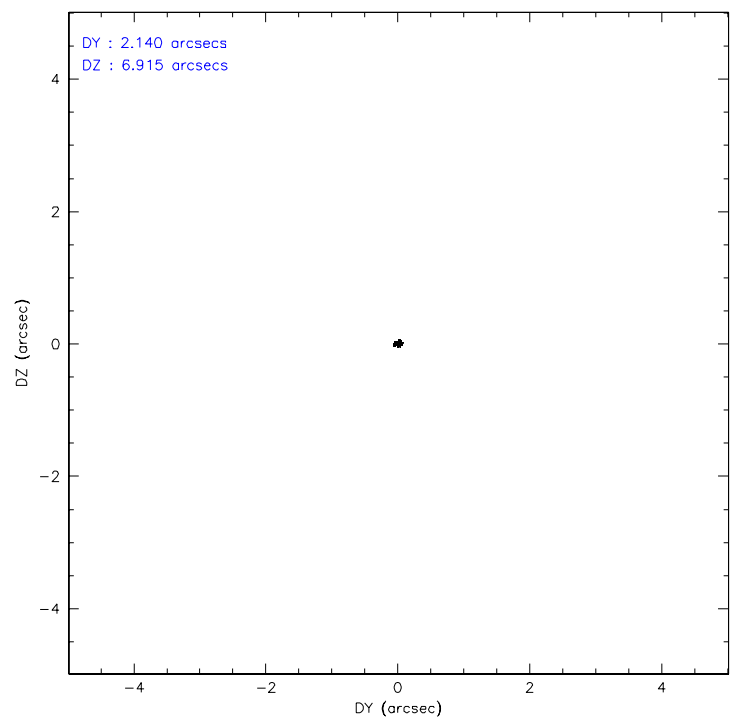
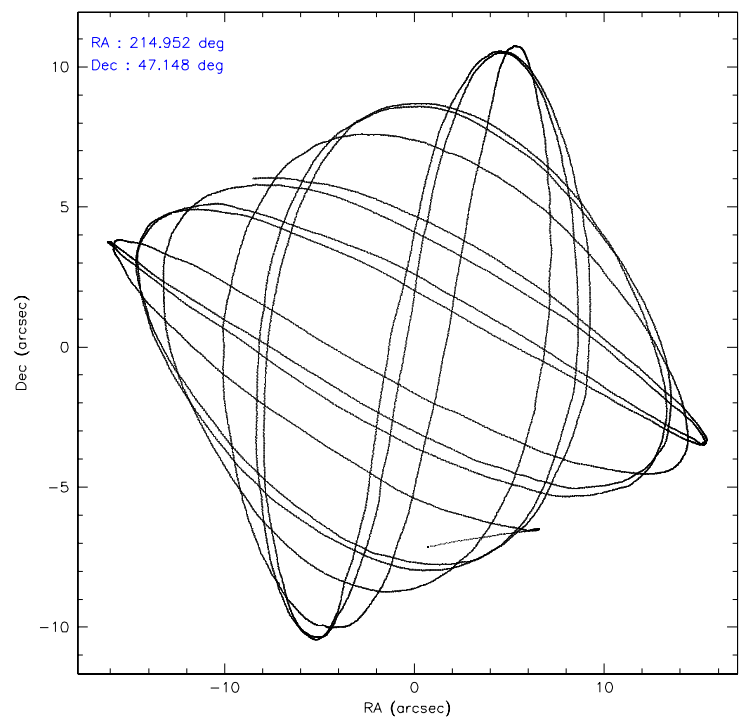
	ccd 2	ccd 3	ccd 5	ccd 6	ccd 7	ccd 8
level 1 events	50432	48437	77428	50670	65438	64285
rejected events	44732	42695	41743	44912	39983	51191
rejected %	88%	88%	53%	88%	61%	79%

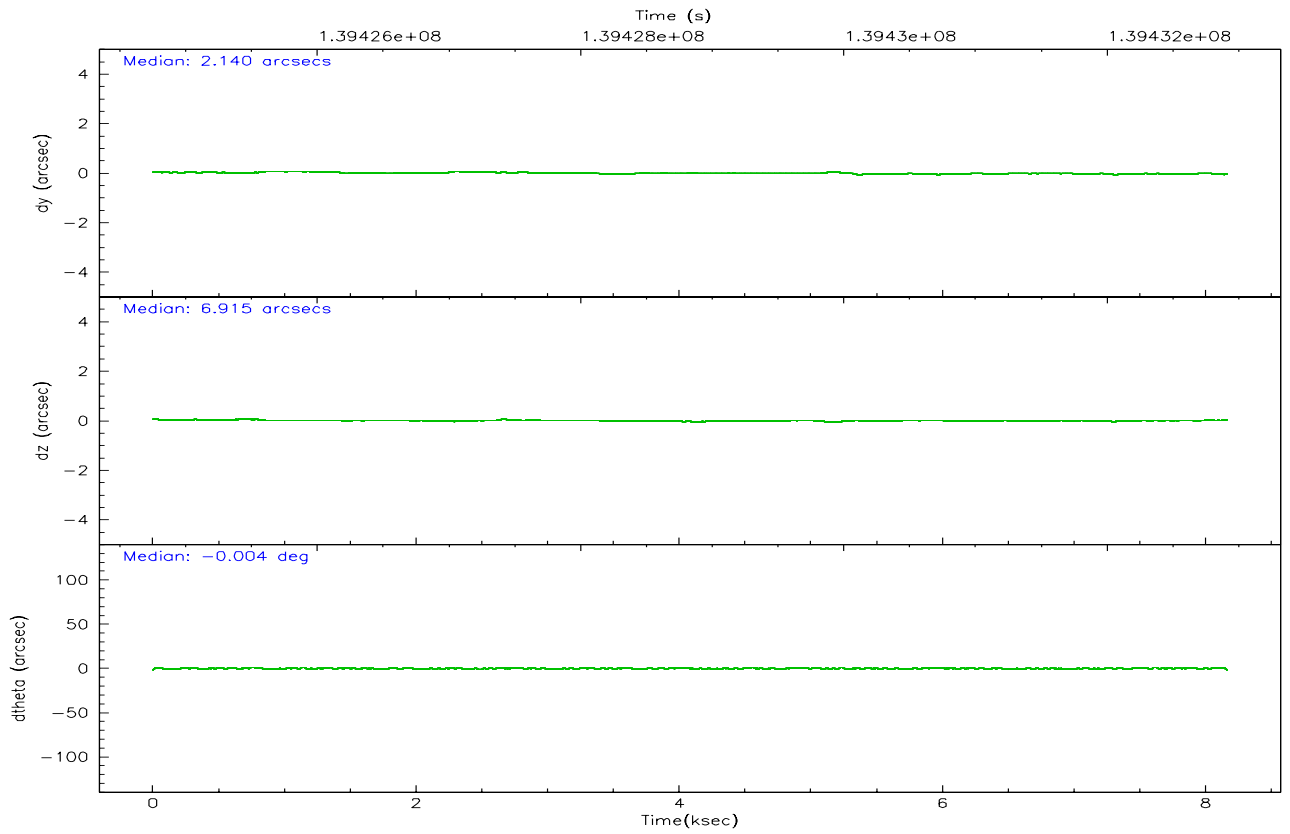
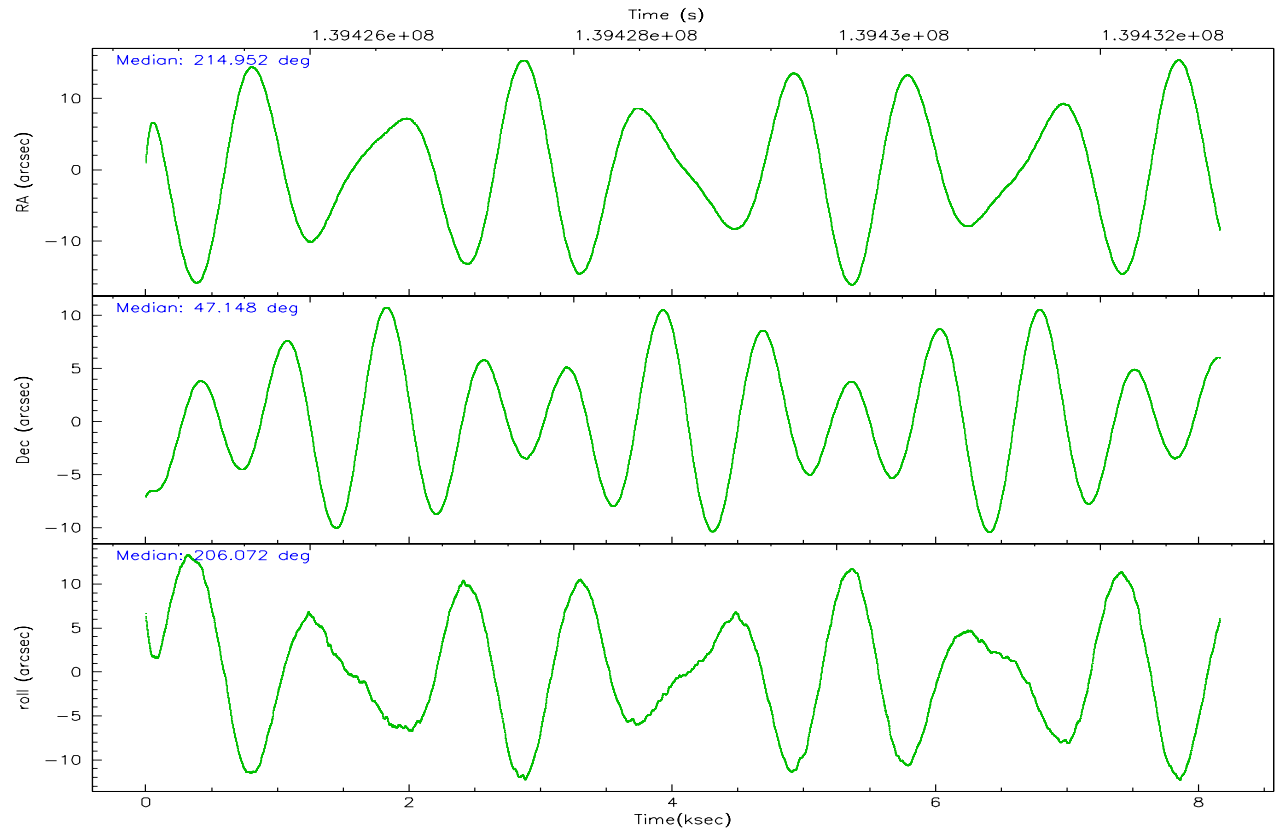
	ccd 2	ccd 3	ccd 5	ccd 6	ccd 7	ccd 8
grade 0 events	2343	2440	5657	2378	1676	4122
	4%	5%	7%	4%	2%	6%
grade 1 events	23	15	264	28	35	37
	0%	0%	0%	0%	0%	0%
grade 2 events	1267	1197	10471	1146	6323	2713
	2%	2%	13%	2%	9%	4%
grade 3 events	508	519	850	547	1357	1505
	1%	1%	1%	1%	2%	2%
grade 4 events	505	564	688	541	1312	1369
	1%	1%	0%	1%	2%	2%
grade 5 events	1826	1988	3983	2161	4421	2736
	3%	4%	5%	4%	6%	4%
grade 6 events	1082	1024	18048	1151	14806	3391
	2%	2%	23%	2%	22%	5%
grade 7 events	42878	40690	37467	42718	35508	48412
	85%	84%	48%	84%	54%	75%

2.2 Compared Parameters

Parameter	Planned	Actual	Parameter	Planned	Actual
Instrument	ACIS	ACIS	Obspar format version number	6	6
Detector	ACIS-235678	ACIS-235678	Obspar file type	PREDICTED	ACTUAL
Grating	NONE	NONE	Obspar update status	NONE	UPDATED
Data mode	FAINT	FAINT	Number of optional ACIS chips dropped	0	0
Observation mode	POINTING	POINTING	On-chip summing requested	N	N
Pointing RA	214.974059	214.9521403091842	Subarray requested	NONE	NONE
Pointing Dec	47.170384	47.14756282338881	Alternating exposures requested	N	N
Pointing Roll	205.904326	206.0770200506566	Primary exposure time	0.000000	3.2
SIM focus pos (mm)	-0.684267	-0.6828225247311905			
SIM defocus (mm)	0	0.001444936568705701			
SIM translation stage pos (mm)	-190.132523	-190.1400660498719			
SIM translation stage offset (mm)	0	0.00754346686406393			
Observation start time	139424917.184000	139424032.58391			
Observation start date	2002-06-02T17:07:33	2002-06-02T16:53:52			
Observation end time	139432917.184000	139433376.48429			
Observation end date	2002-06-02T19:20:53	2002-06-02T19:29:36			
Read mode	TIMED	TIMED			

2.3 Aspect



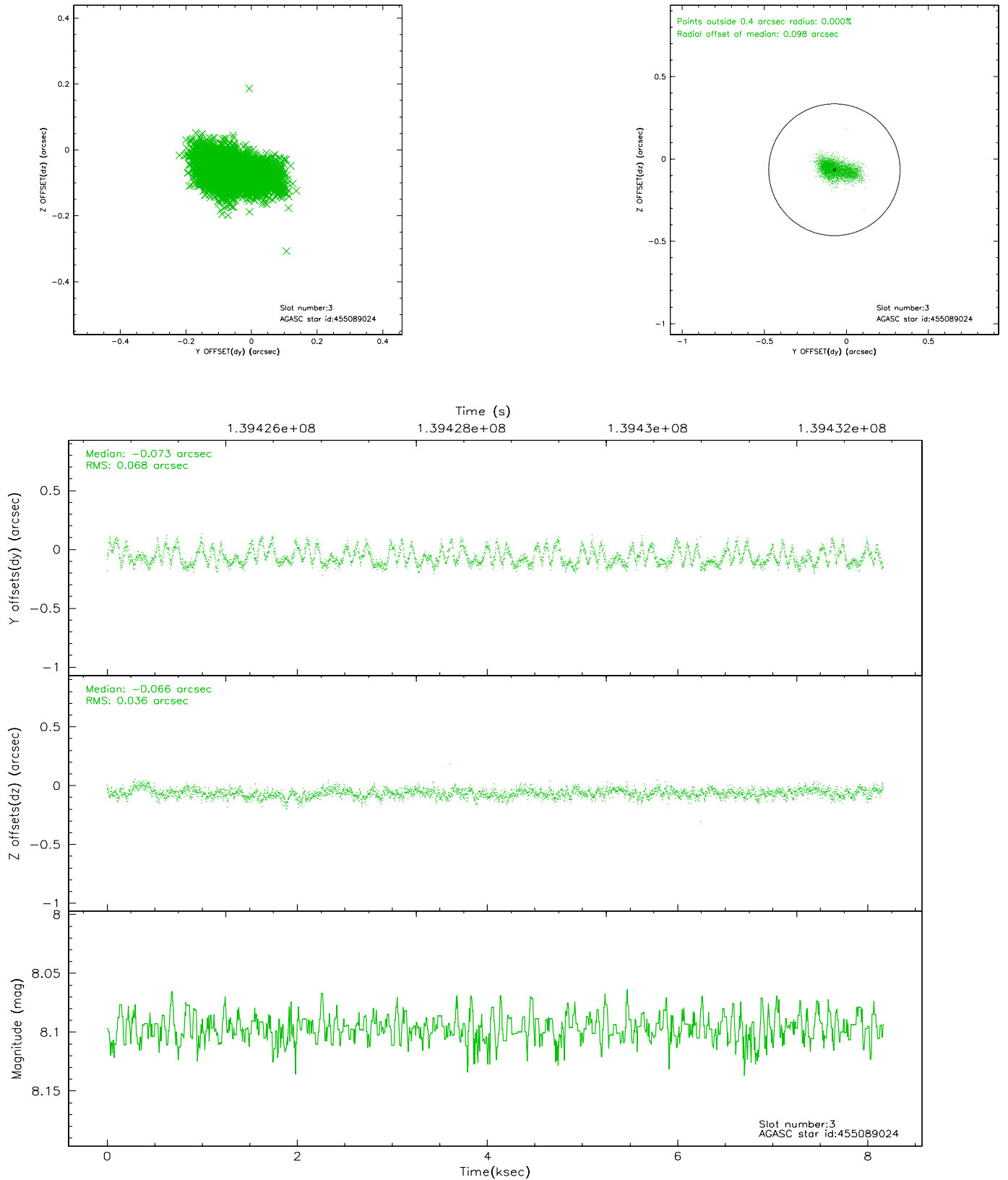


Slot Statistics

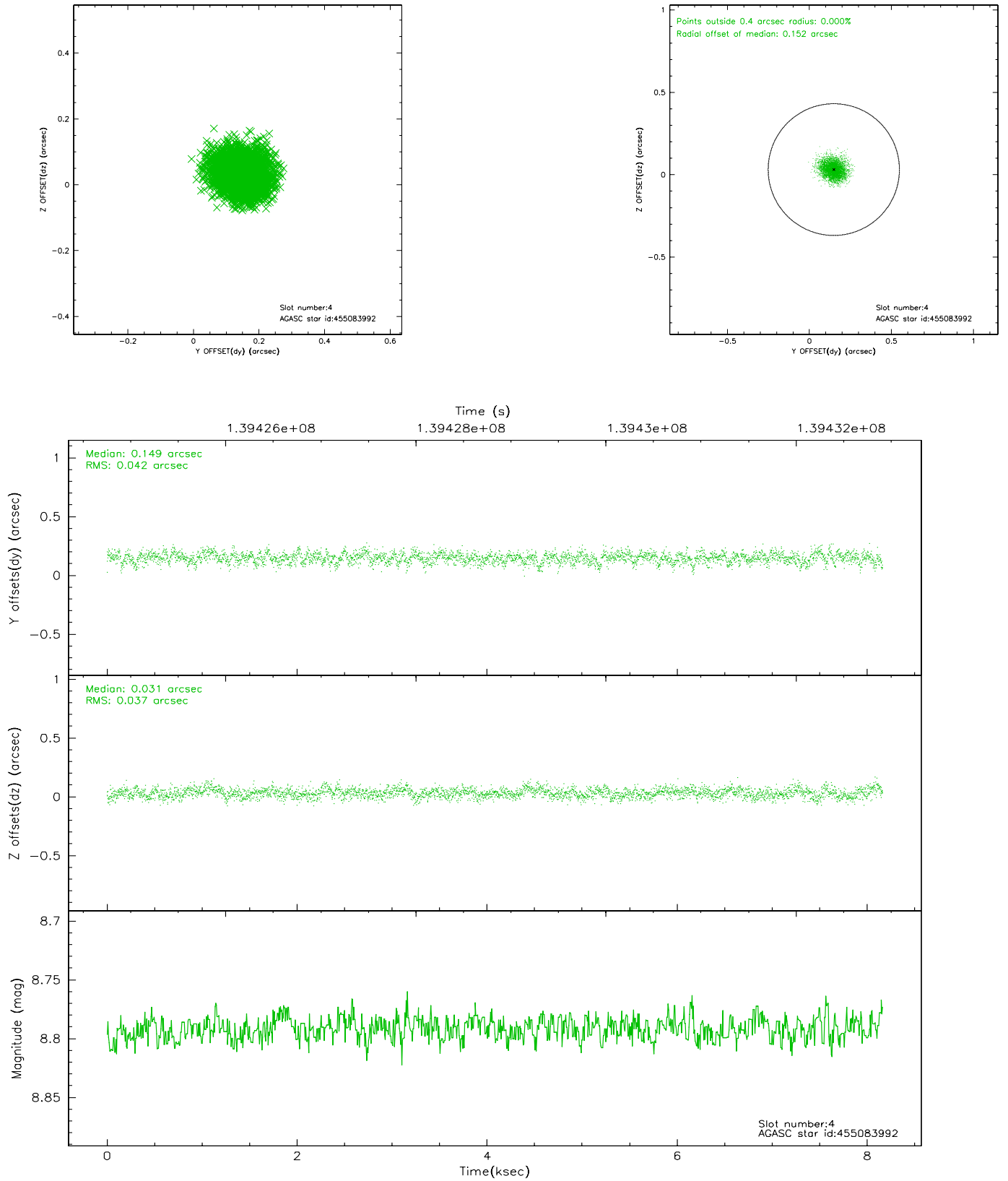
slot	status	id	mag	n_pts	med_dy	med_dz	dr1	dr2	ra	dec	mean_y	mean_z
0	FID	ACIS-S-2	7.11	1991	-0.011	0.035	0.007	0.012	0.000000	0.000000	-754.76	-1728.05
1	FID	ACIS-S-4	7.20	1991	-0.085	-0.004	0.005	0.010	0.000000	0.000000	2158.12	179.70
2	FID	ACIS-S-5	7.24	1991	0.065	-0.022	0.006	0.010	0.000000	0.000000	-1806.65	174.12
3	GUIDE	455089024	8.10	3981	-0.073	-0.066	0.079	0.138	216.032003	46.769703	-1724.81	2421.42
4	GUIDE	455083992	8.79	3983	0.149	0.031	0.060	0.097	214.489170	46.384559	2316.37	2016.70
5	GUIDE	455083280	9.08	3983	0.003	0.025	0.079	0.127	213.981089	47.164062	2189.32	-1053.97
6	GUIDE	455085672	9.40	3982	0.008	0.043	0.122	0.187	215.670896	46.931477	-1168.91	1515.35
7	GUIDE	455480408	9.43	3978	-0.089	-0.026	0.096	0.161	215.278062	47.584841	-1317.55	-1020.17

2.4 Star Slots

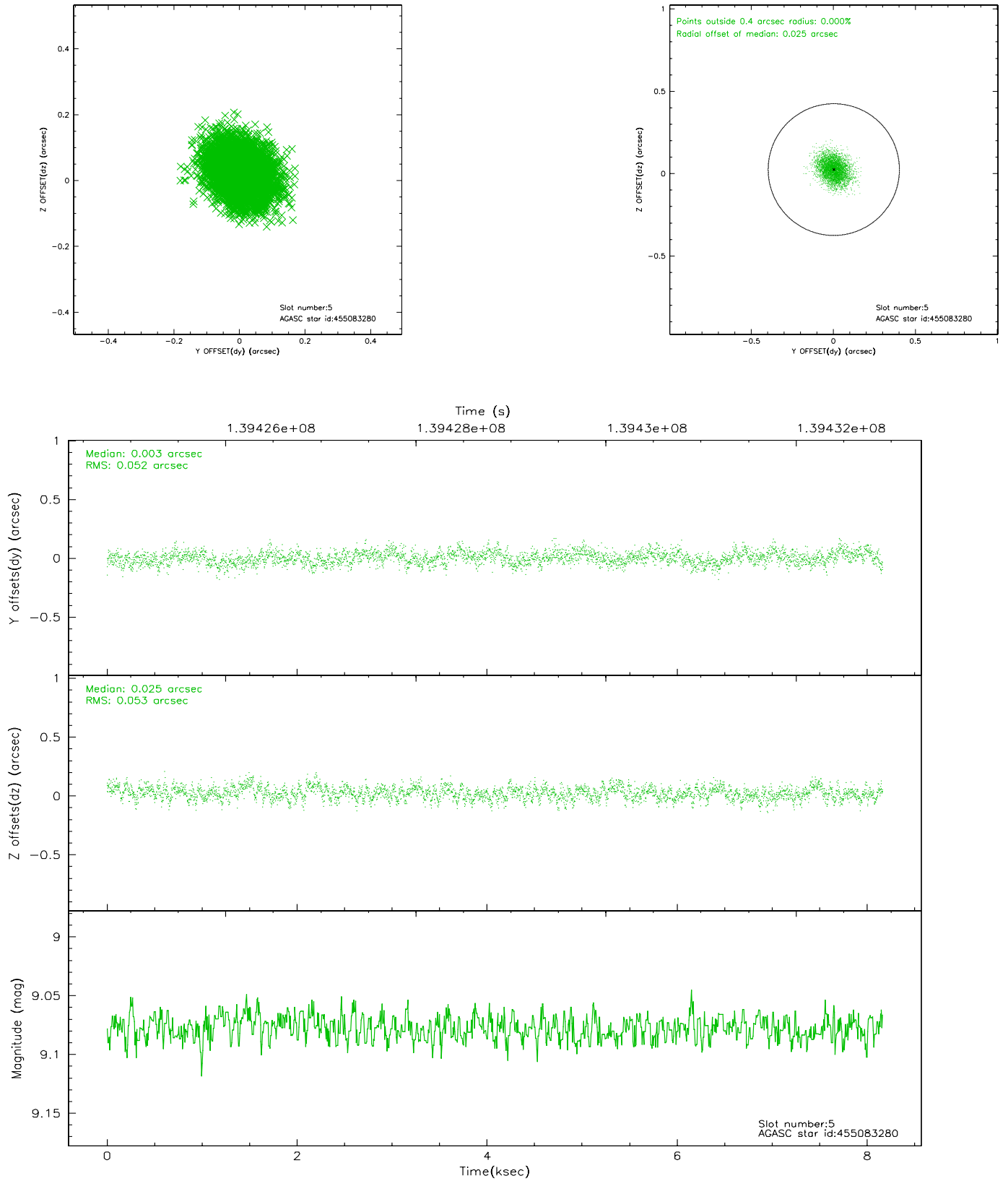
2.4.1 Slot 3



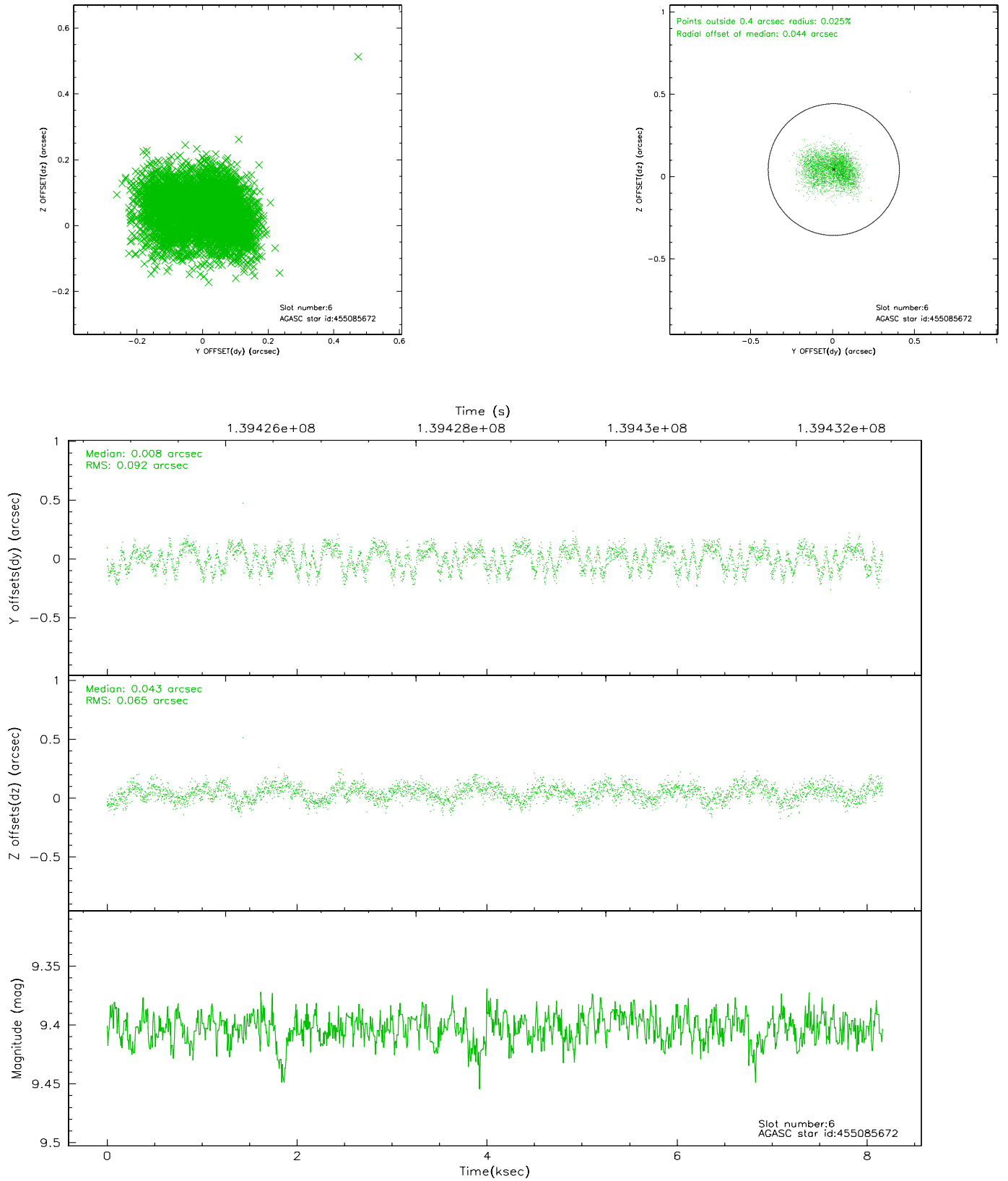
2.4.2 Slot 4



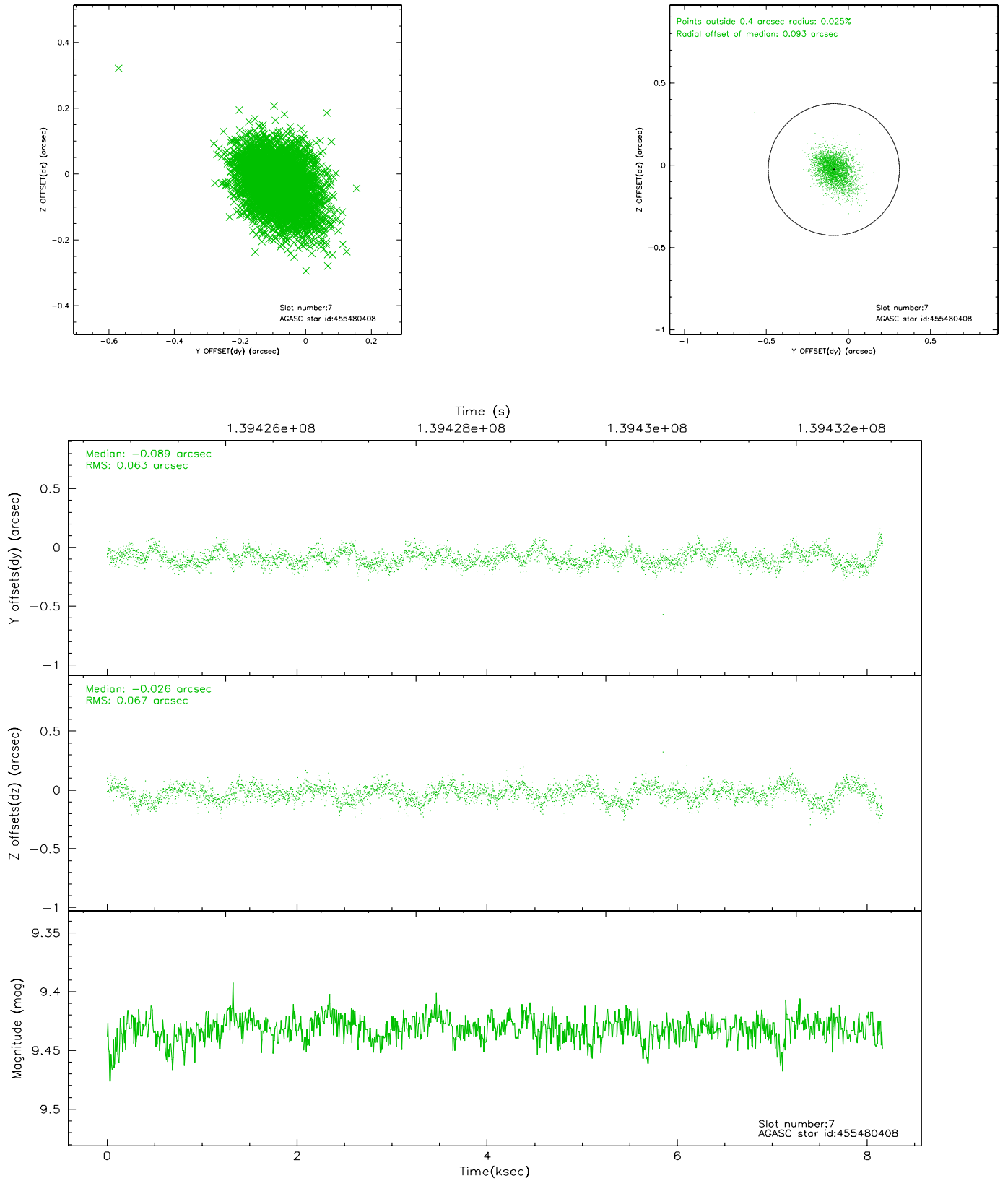
2.4.3 Slot 5



2.4.4 Slot 6

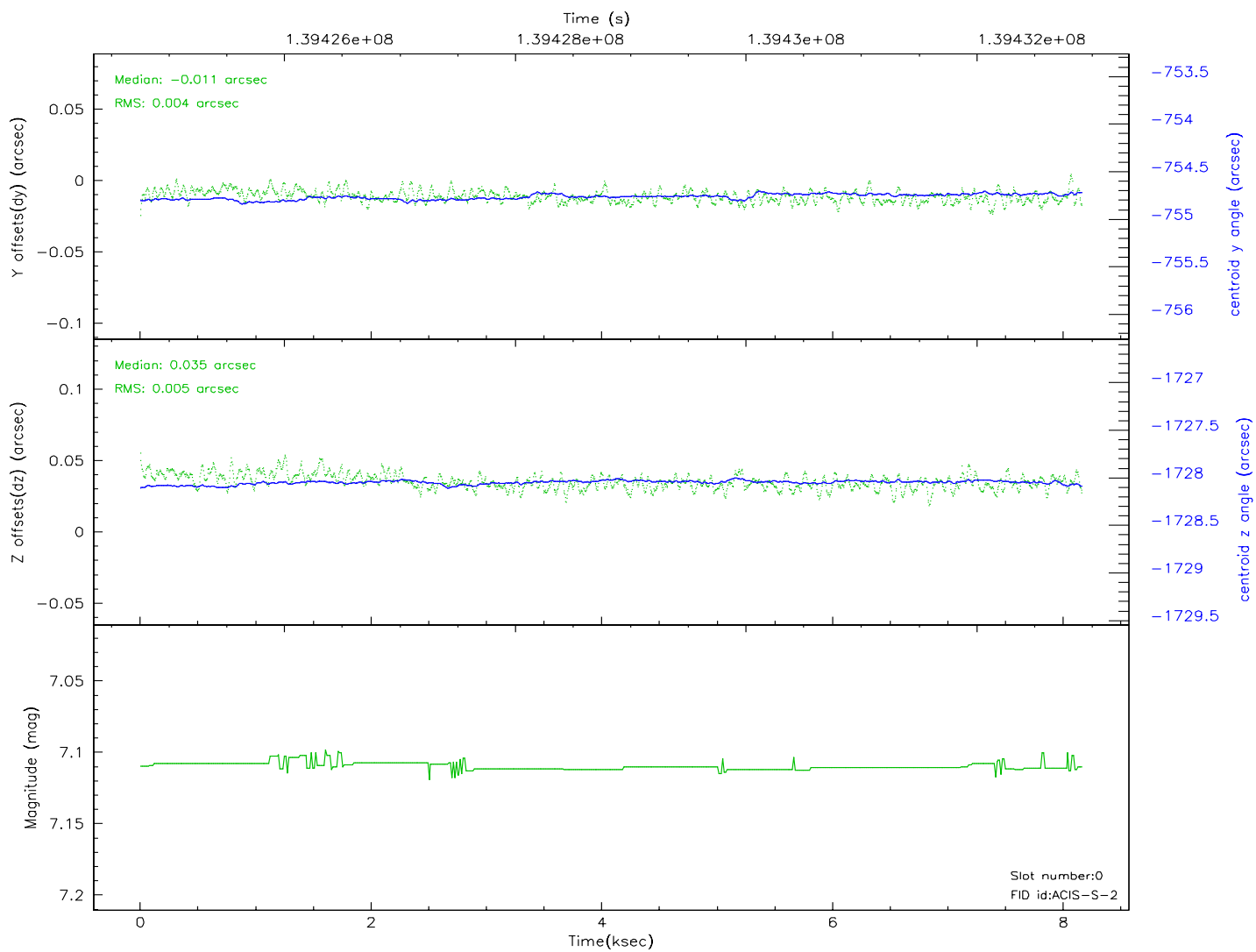
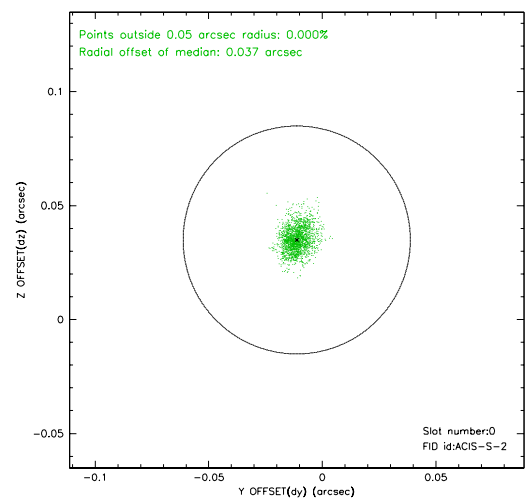
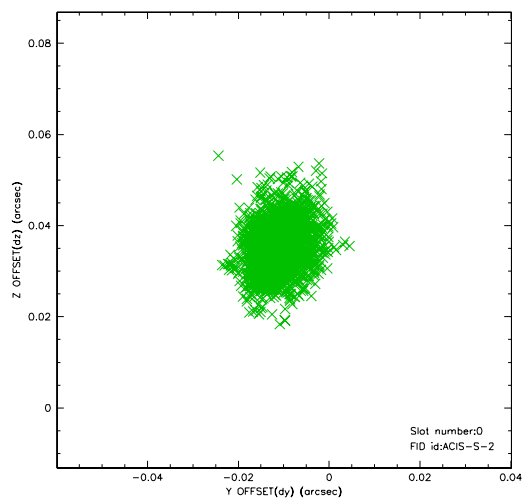


2.4.5 Slot 7

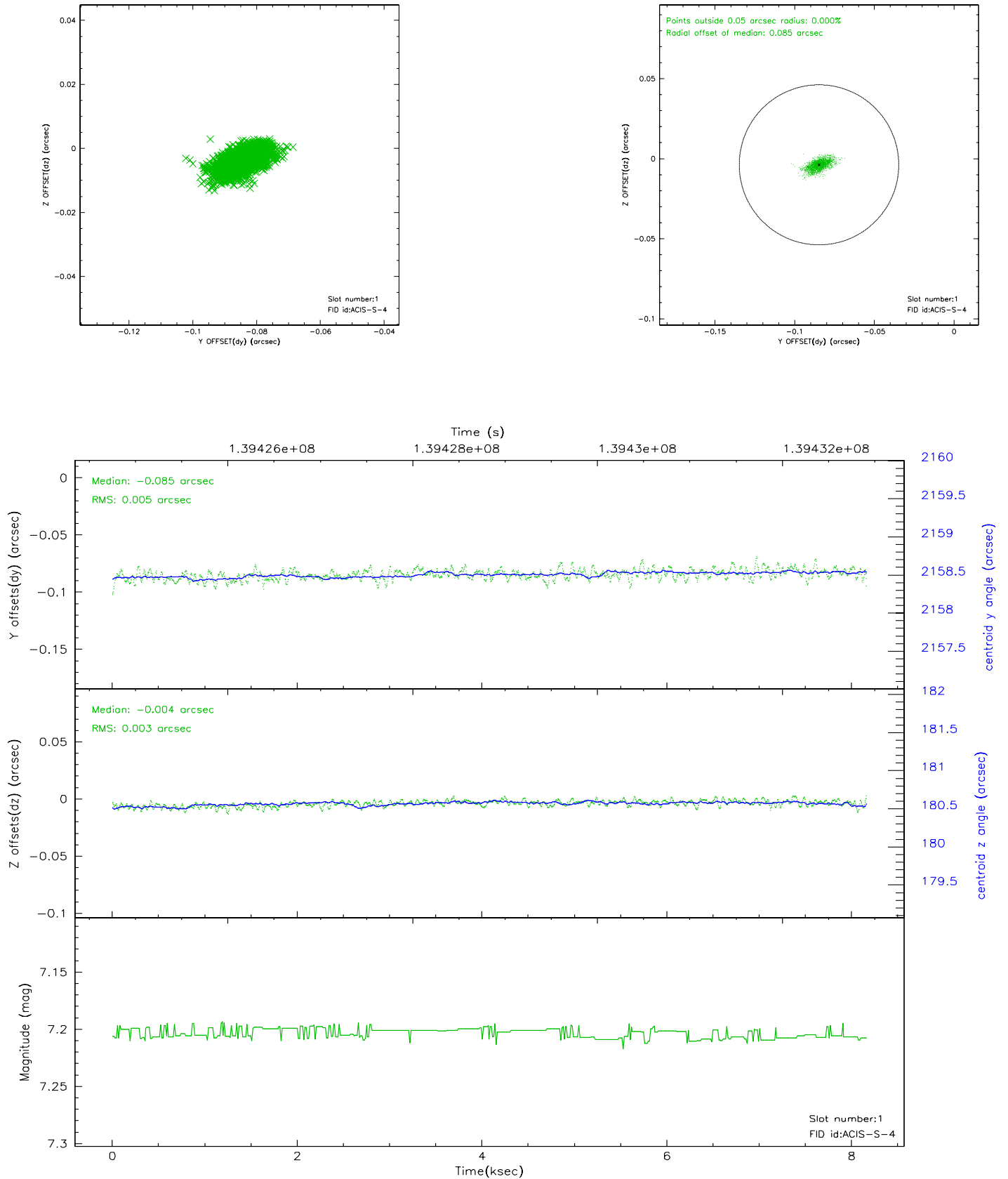


2.5 FID Slots

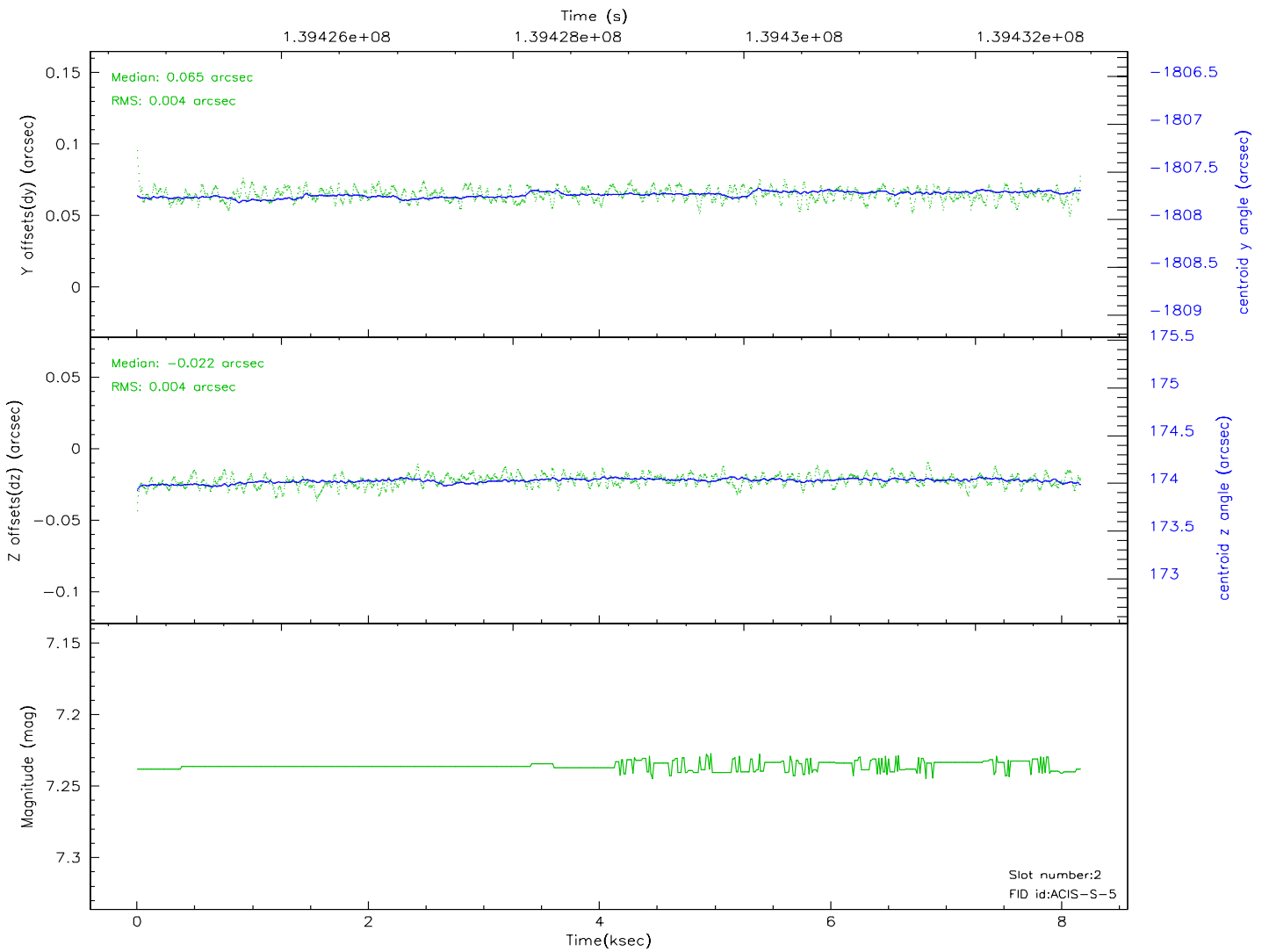
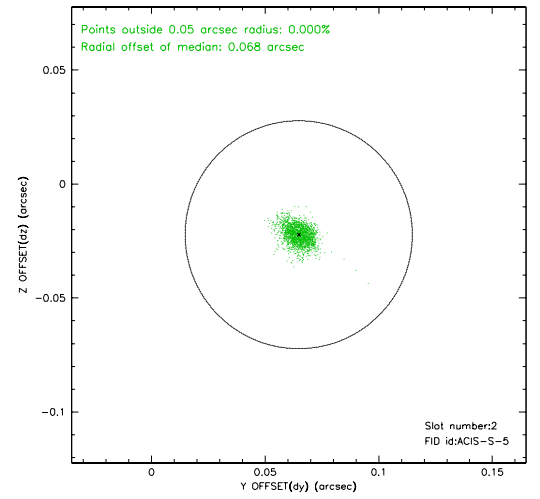
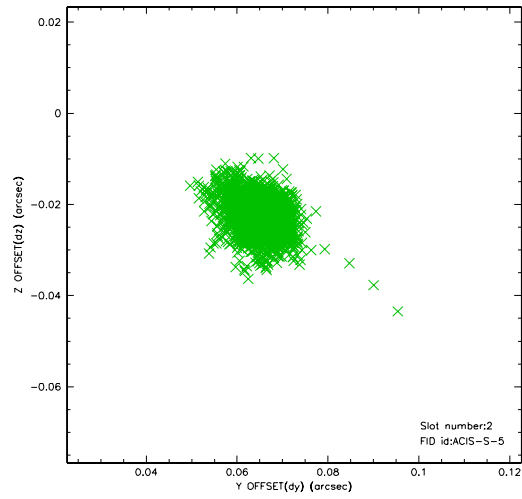
2.5.1 Slot 0



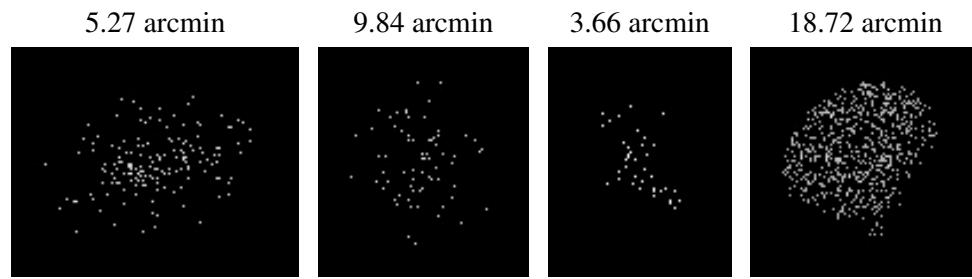
2.5.2 Slot 1



2.5.3 Slot 2



3 Point Sources



A Summary

A.1 Status

V&V Scientist	Jen Lauer
V&V Date (YYYY-MM-DD)	2006.09.18
V&V Edition	1
V&V Disposition and Status	OK
V&V Charge Time	7.756

A.2 Comments