

# V&V Reference Report

## L2 ASCDS Version : 7.6.9

Observation 3026 - L2 Version 001  
Chandra X-Ray Center

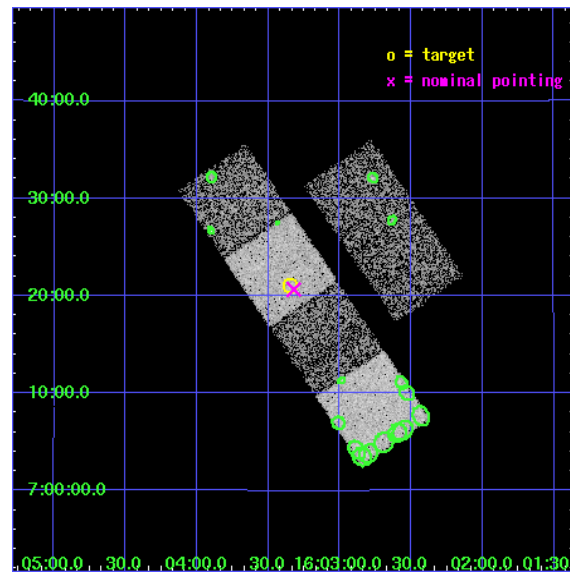
L2 Processing Date : Sep 22 2006

## Contents

<b>1</b>	<b>Front</b>	<b>2</b>
<b>2</b>	<b>OBI</b>	<b>3</b>
2.1	OBI . . . . .	3
2.1.1	Images . . . . .	3
2.1.2	Bias . . . . .	3
2.1.3	Parameters . . . . .	4
2.1.4	Events . . . . .	4
2.2	Compared Parameters . . . . .	5
2.3	Aspect . . . . .	6
2.4	Star Slots . . . . .	9
2.4.1	Slot 3 . . . . .	9
2.4.2	Slot 4 . . . . .	10
2.4.3	Slot 5 . . . . .	11
2.4.4	Slot 6 . . . . .	12
2.4.5	Slot 7 . . . . .	13
2.5	FID Slots . . . . .	14
2.5.1	Slot 0 . . . . .	14
2.5.2	Slot 1 . . . . .	15
2.5.3	Slot 2 . . . . .	16
<b>3</b>	<b>Point Sources</b>	<b>17</b>
<b>A</b>	<b>Summary</b>	<b>18</b>
A.1	Status . . . . .	18
A.2	Comments . . . . .	18

# 1 Front

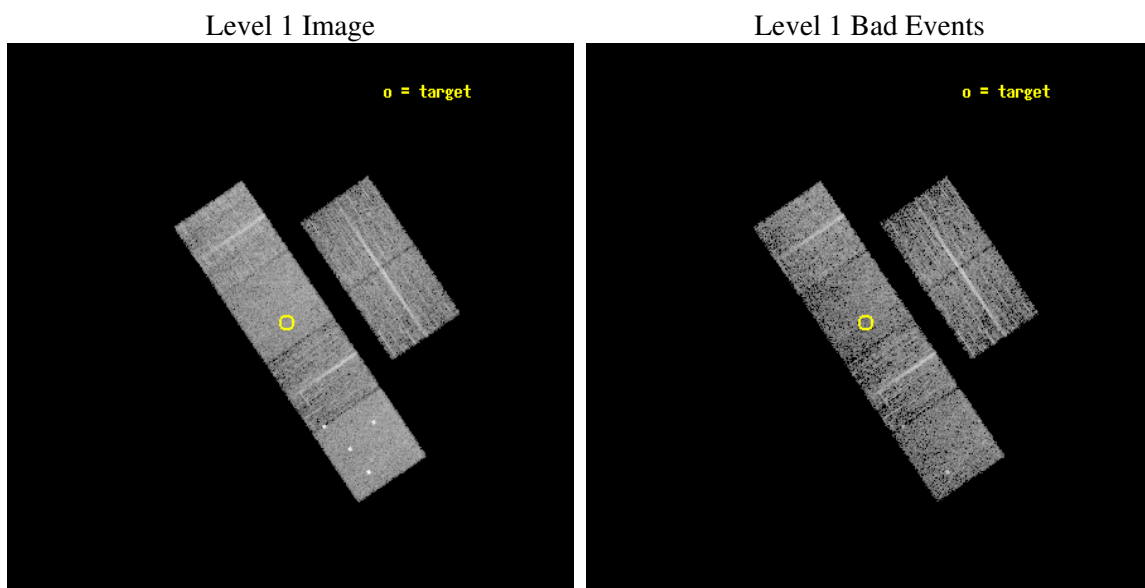
seq_num	700465
obs_id	3026
title	A SYSTEMATIC X-RAY SURVEY OF SUBMILLIMETRE-LUMINOUS QUASARS
observer	Dr Robert Priddey
object	BR1600+0724
dtcycle	0
cycle	P
ra_targ	240.837125
dec_targ	7.351278
ra_nom	240.8303315312
dec_nom	7.3443313460474
roll_nom	235.79859633629
revision	2
ontime	4604.7999828458
livetime	4546.4912327853
ontime2	4604.7999828458
ontime3	4604.7999828458
ontime5	4604.7999828458
ontime6	4604.7999828458
ontime7	4604.7999828458
ontime8	4601.5590225756
l2events	50565



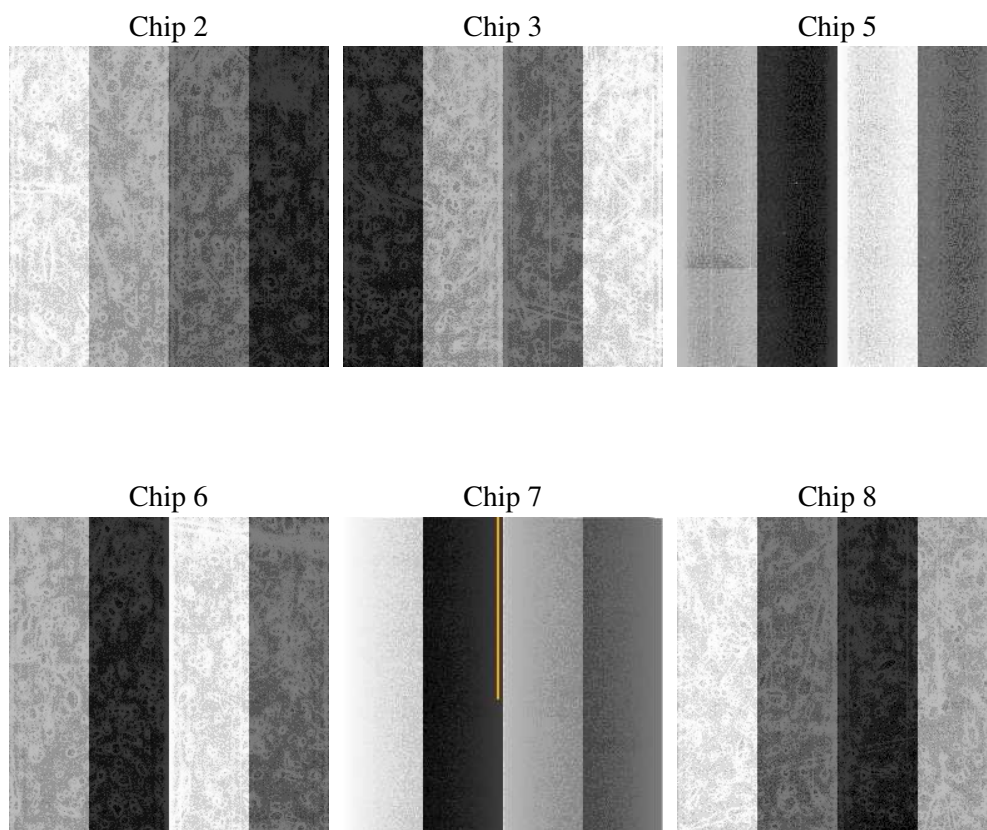
## 2 OBI

### 2.1 OBI

#### 2.1.1 Images



#### 2.1.2 Bias



### 2.1.3 Parameters

obi_num	2
ascdsver	7.6.9
caldbver	3.2.3
date	2006-09-22T16:35:43
revision	2

sched_exp_time	4850.000000
ontime	4608.706368804
ontime2	4608.7063489258
ontime3	4608.7063489258
ontime5	4608.706368804
ontime6	4608.7063489258
ontime7	4608.706368804
ontime8	4605.4652789533
l1events	235302

### 2.1.4 Events

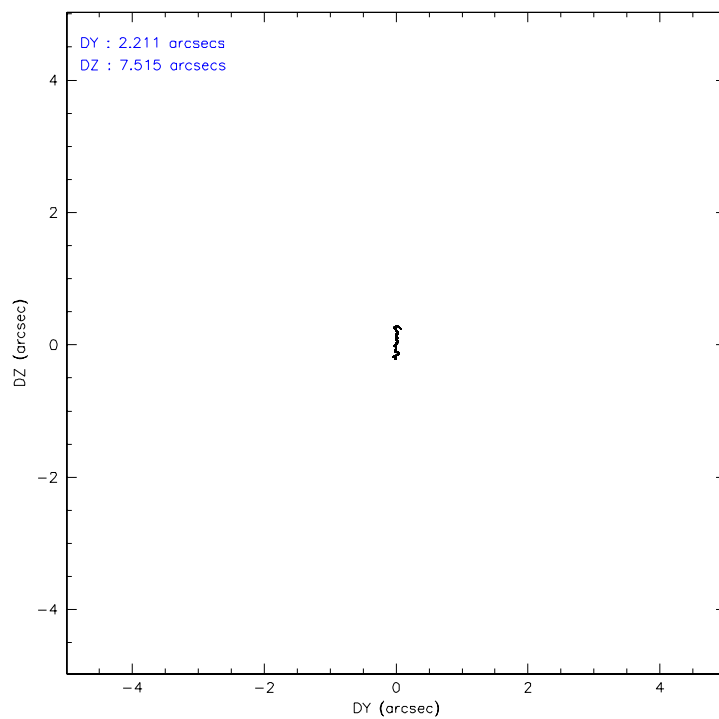
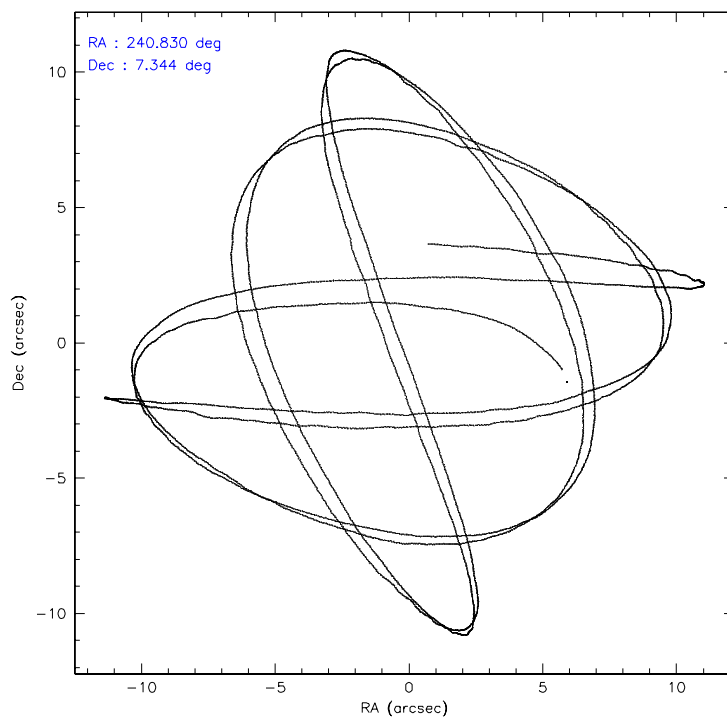
	ccd 2	ccd 3	ccd 5	ccd 6	ccd 7	ccd 8
level 1 events	33406	33172	47455	33005	41493	46771
rejected events	29190	29084	25495	28773	25134	35299
rejected %	87%	87%	53%	87%	60%	75%

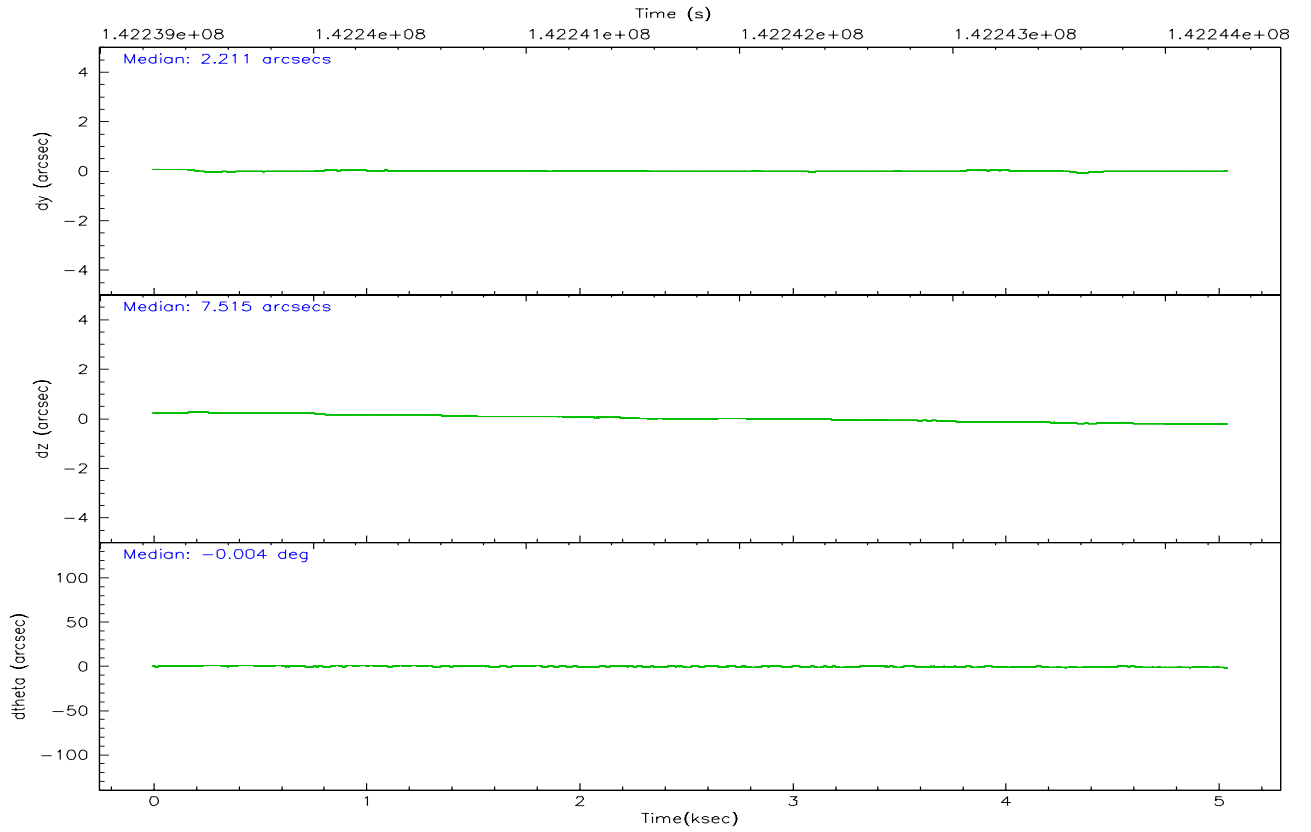
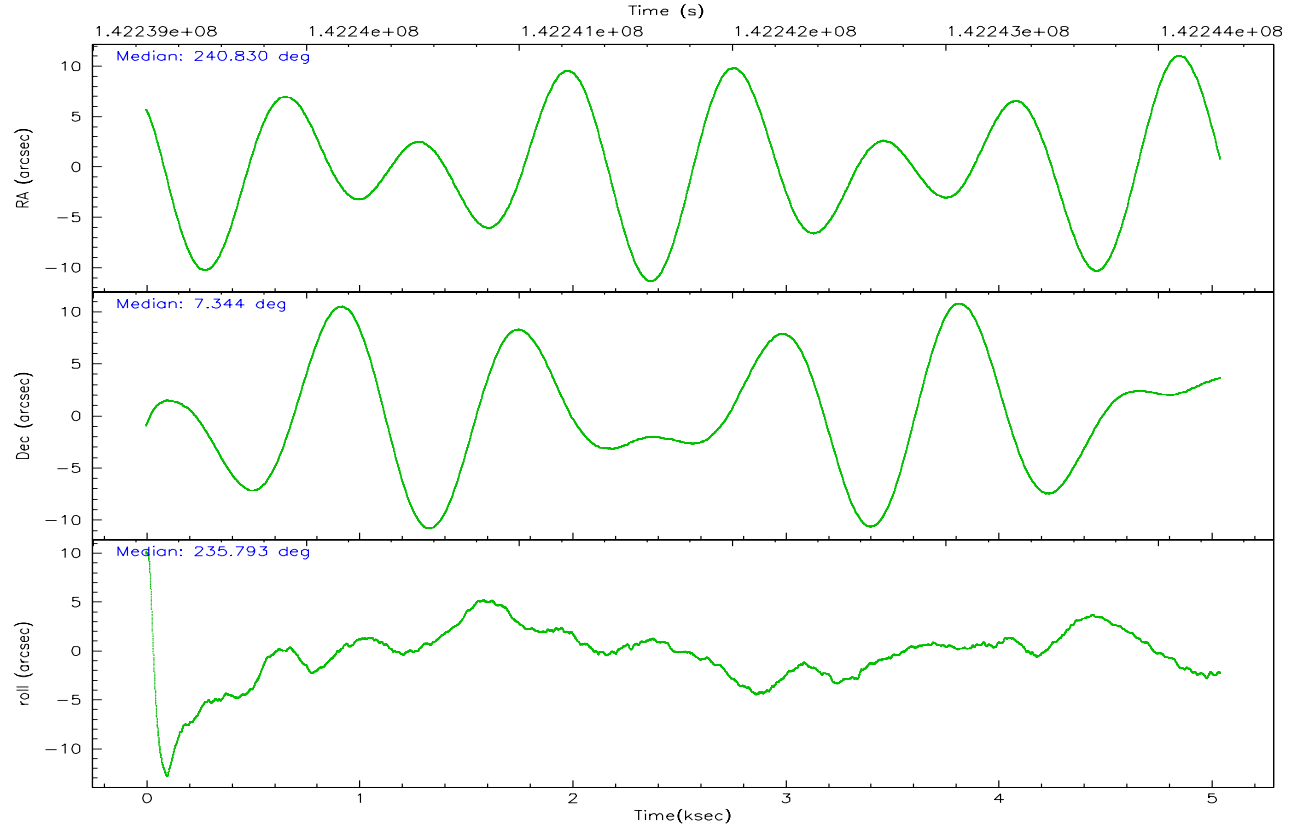
	ccd 2	ccd 3	ccd 5	ccd 6	ccd 7	ccd 8
grade 0 events	1888	1775	2785	1830	1243	3891
	5%	5%	5%	5%	2%	8%
grade 1 events	17	13	87	23	21	42
	0%	0%	0%	0%	0%	0%
grade 2 events	907	912	6677	938	3949	2220
	2%	2%	14%	2%	9%	4%
grade 3 events	320	343	543	375	932	1465
	0%	1%	1%	1%	2%	3%
grade 4 events	365	338	548	328	917	1281
	1%	1%	1%	0%	2%	2%
grade 5 events	1093	1259	2275	1408	2824	1733
	3%	3%	4%	4%	6%	3%
grade 6 events	738	720	11421	766	9328	2617
	2%	2%	24%	2%	22%	5%
grade 7 events	28078	27812	23119	27337	22279	33522
	84%	83%	48%	82%	53%	71%

## 2.2 Compared Parameters

Parameter	Planned	Actual	Parameter	Planned	Actual
Instrument	ACIS	ACIS	Obspar format version number	6	6
Detector	ACIS-235678	ACIS-235678	Obspar file type	PREDICTED	ACTUAL
Grating	NONE	NONE	Obspar update status	NONE	UPDATED
Data mode	FAINT	FAINT	Number of optional ACIS chips dropped	0	0
Observation mode	POINTING	POINTING	On-chip summing requested	N	N
Pointing RA	240.831956	240.8303315312048	Subarray requested	NONE	NONE
Pointing Dec	7.371539	7.344331346047417	Alternating exposures requested	N	N
Pointing Roll	235.641689	235.7985963362928	Primary exposure time	0.000000	3.2
SIM focus pos (mm)	-0.684267	-0.6828225247311905			
SIM defocus (mm)	0	0.001444936568705701			
SIM translation stage pos (mm)	-190.132523	-190.1425803651734			
SIM translation stage offset (mm)	0	0.01005778216563158			
Observation start time	142239437.184000	142238599.67413			
Observation start date	2002-07-05T06:56:13	2002-07-05T06:43:19			
Observation end time	142244287.184000	142244882.41189			
Observation end date	2002-07-05T08:17:03	2002-07-05T08:28:02			
Read mode	TIMED	TIMED			

## 2.3 Aspect





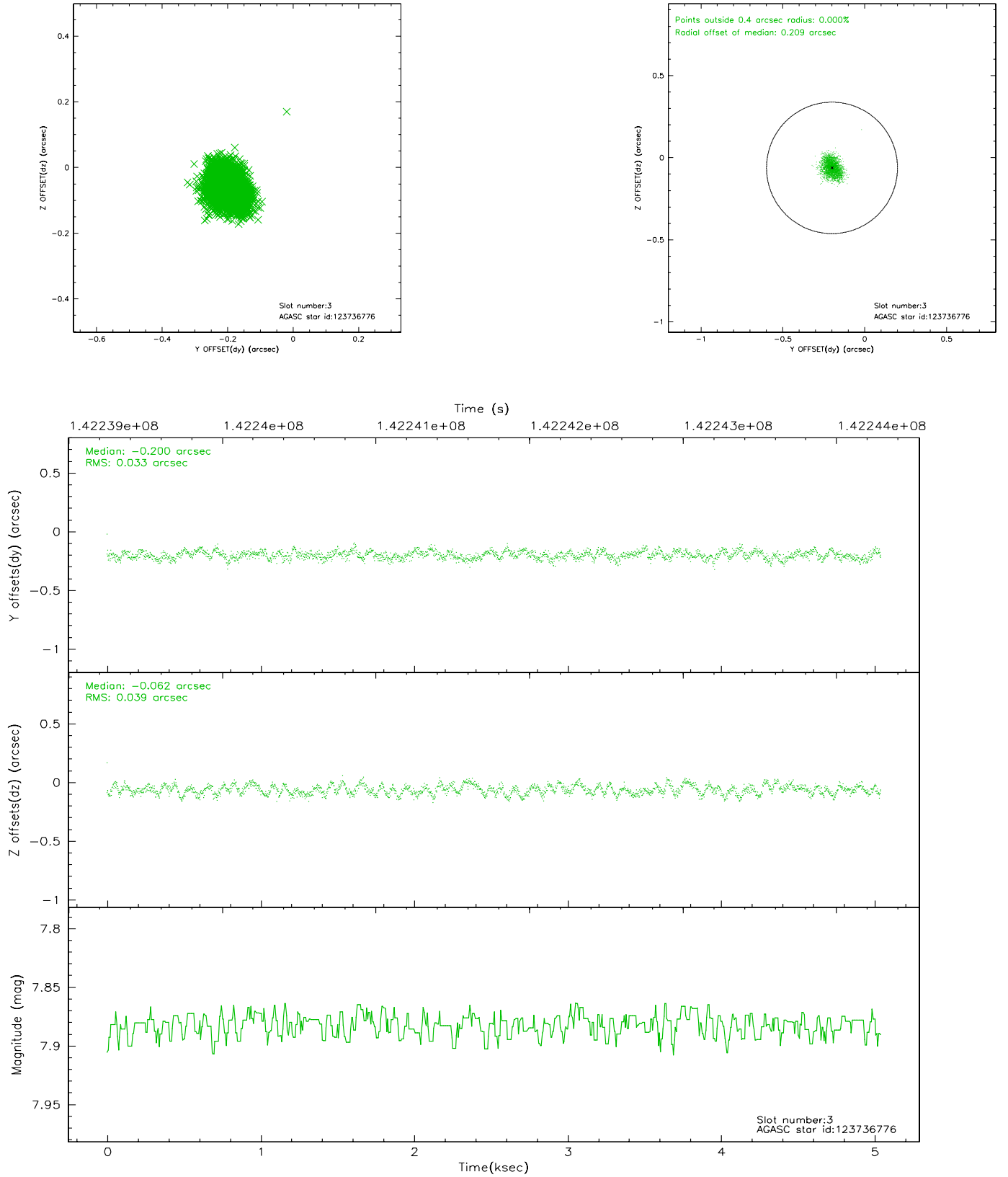
### Slot Statistics

slot	status	id	mag	n_pts	med_dy	med_dz	dr1	dr2	ra	dec	mean_y	mean_z
0	FID	ACIS-S-2	7.11	1230	-0.008	0.020	0.007	0.012	0.000000	0.000000	-754.85	-1728.64
1	FID	ACIS-S-4	7.20	1230	-0.065	-0.001	0.005	0.010	0.000000	0.000000	2157.83	178.57
2	FID	ACIS-S-5	7.24	1230	0.042	-0.009	0.006	0.010	0.000000	0.000000	-1806.08	173.61
3	GUIDE	123736776	7.88	2460	-0.200	-0.062	0.055	0.086	241.130578	7.656910	-1449.71	299.91
4	GUIDE	49546344	8.41	2460	0.033	-0.016	0.060	0.099	240.870286	6.951312	1171.19	967.68
5	GUIDE	49547048	8.37	2460	0.009	0.041	0.070	0.112	241.066082	7.374225	-479.11	685.42
6	GUIDE	49551072	9.02	2459	0.093	-0.016	0.069	0.114	240.539891	7.224939	1024.32	-562.50
7	GUIDE	49547944	9.42	2457	0.063	0.049	0.115	0.188	241.211713	7.223224	-324.57	1421.04

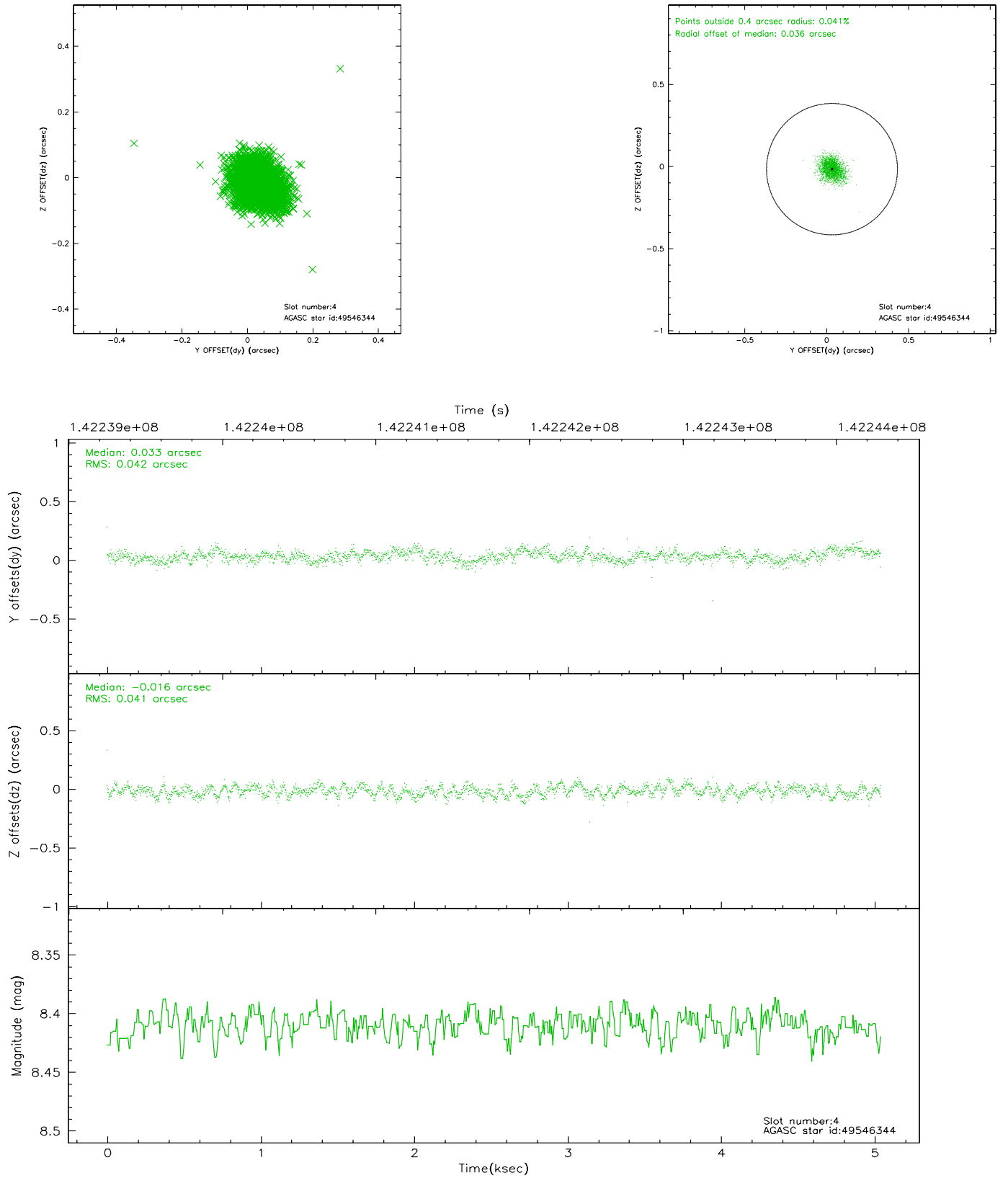


## 2.4 Star Slots

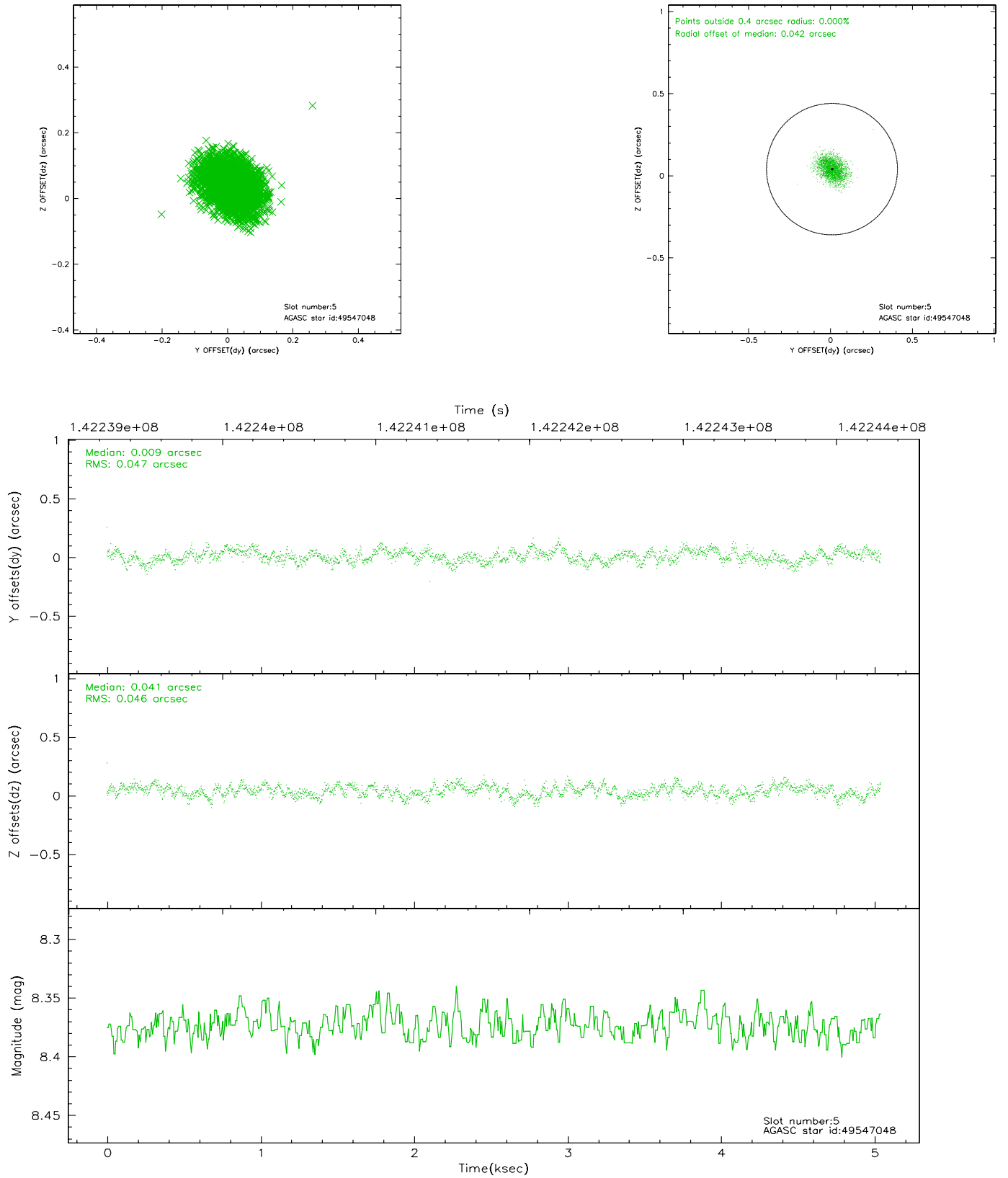
### 2.4.1 Slot 3



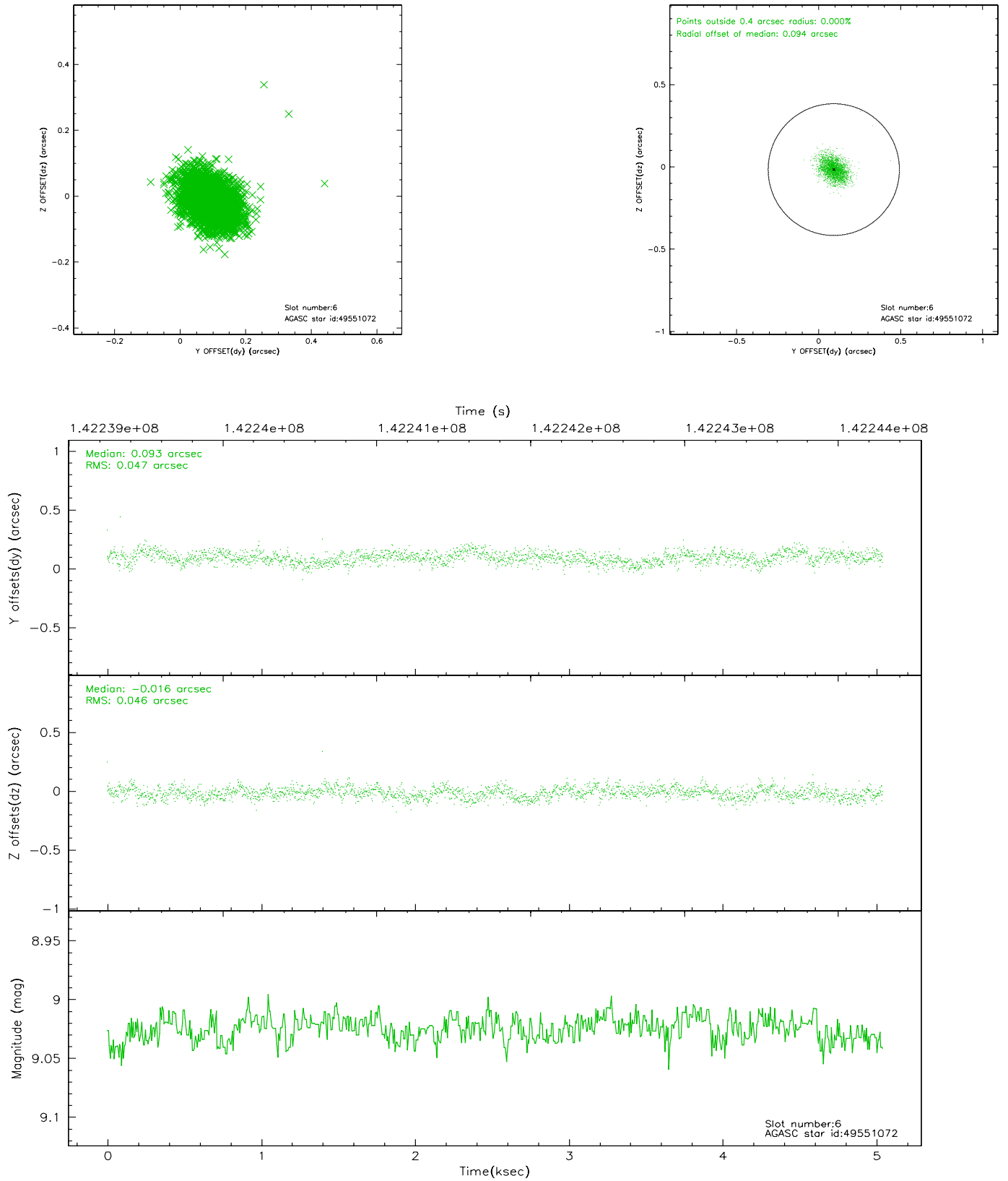
## 2.4.2 Slot 4



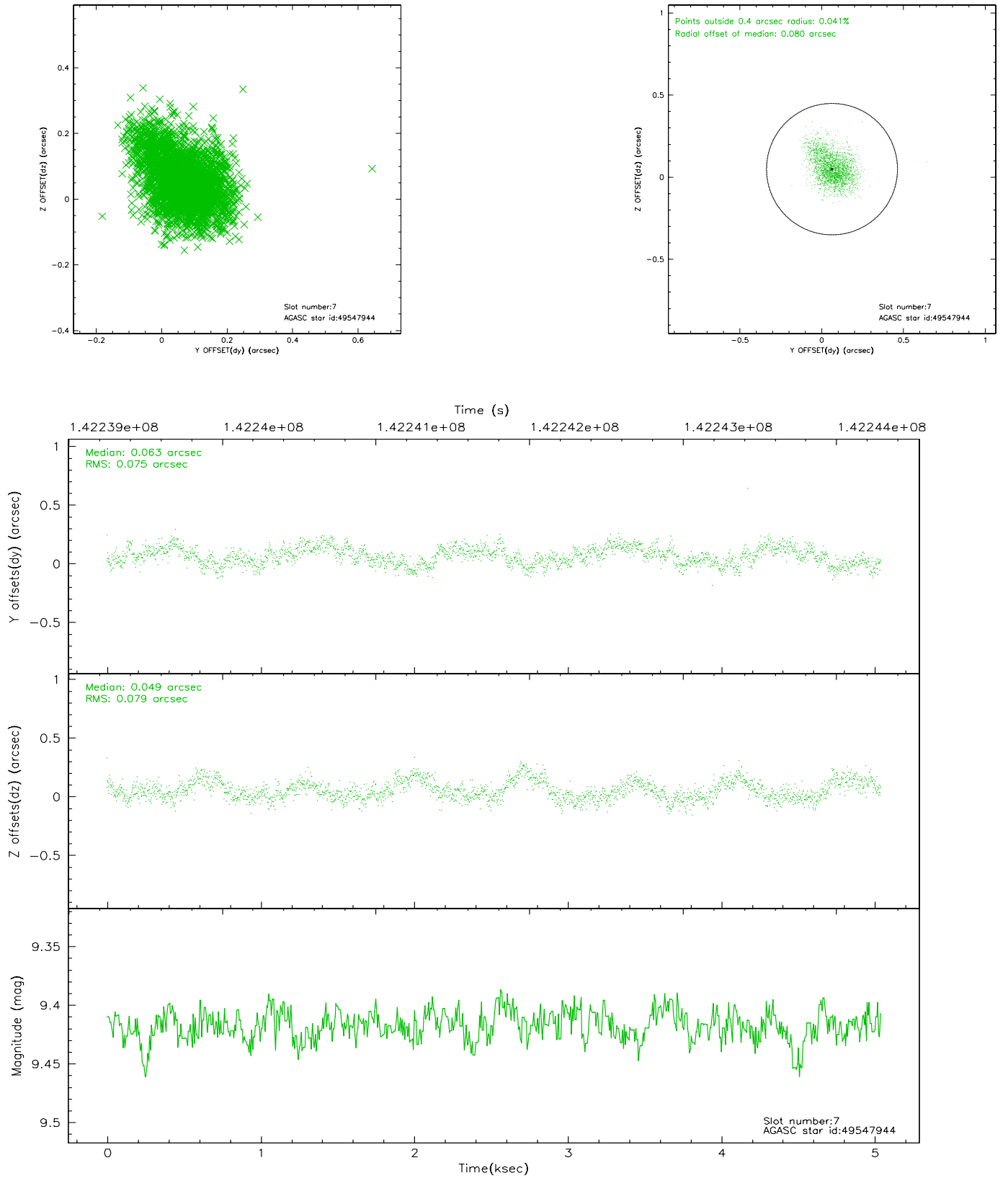
### 2.4.3 Slot 5



## 2.4.4 Slot 6

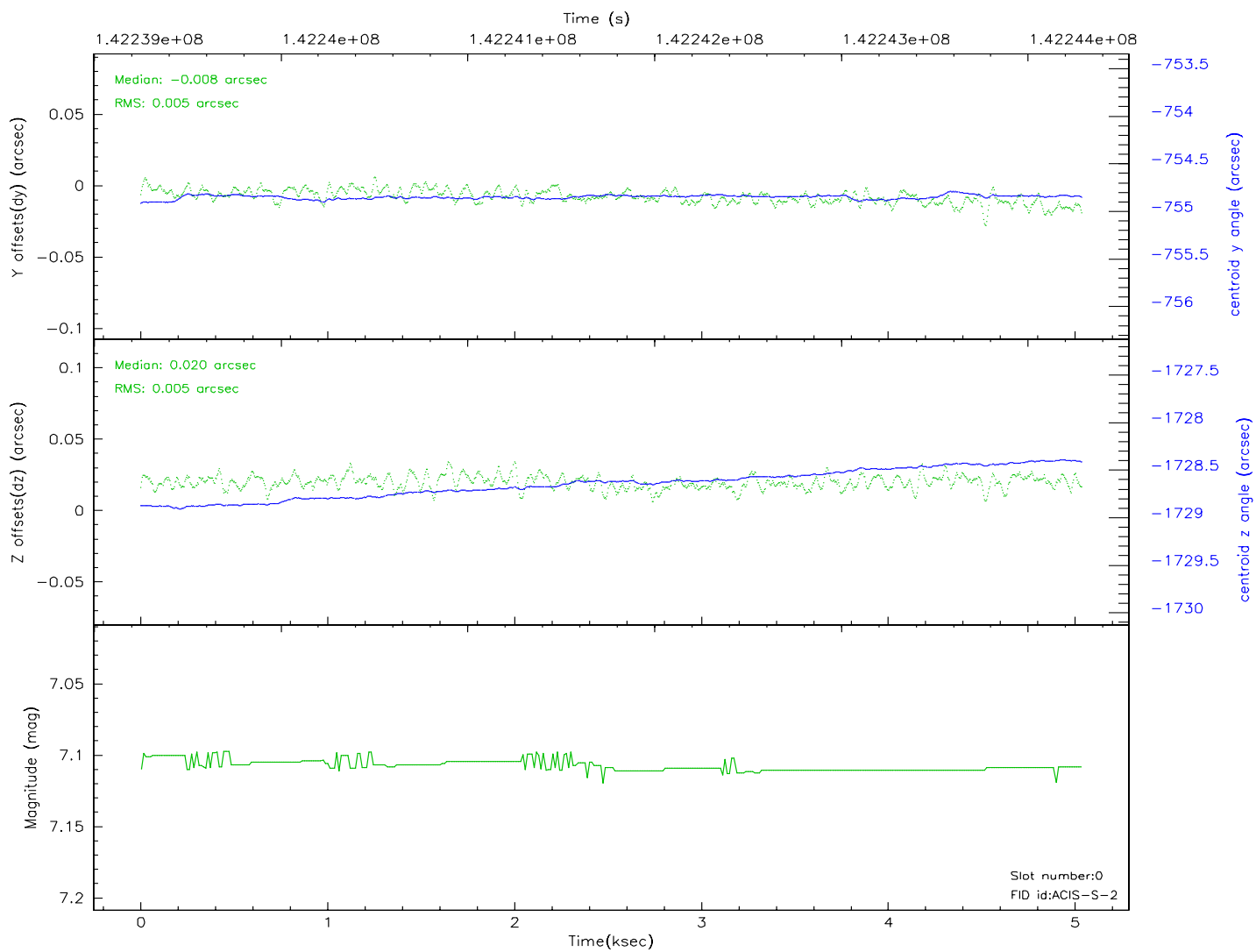
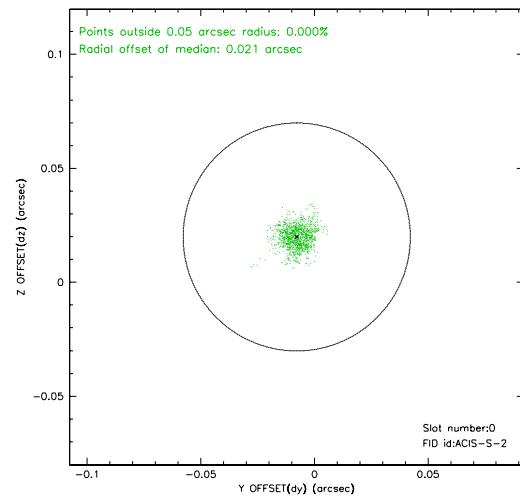
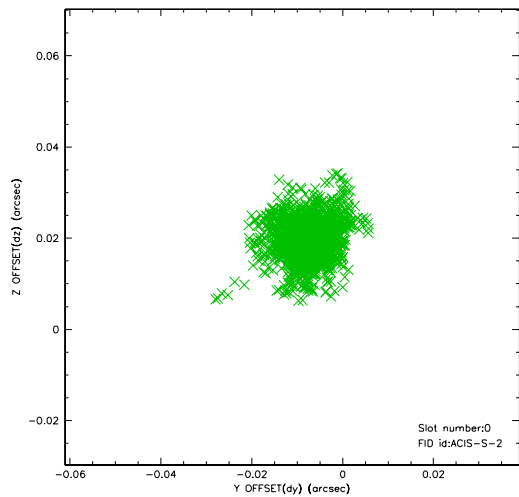


## 2.4.5 Slot 7

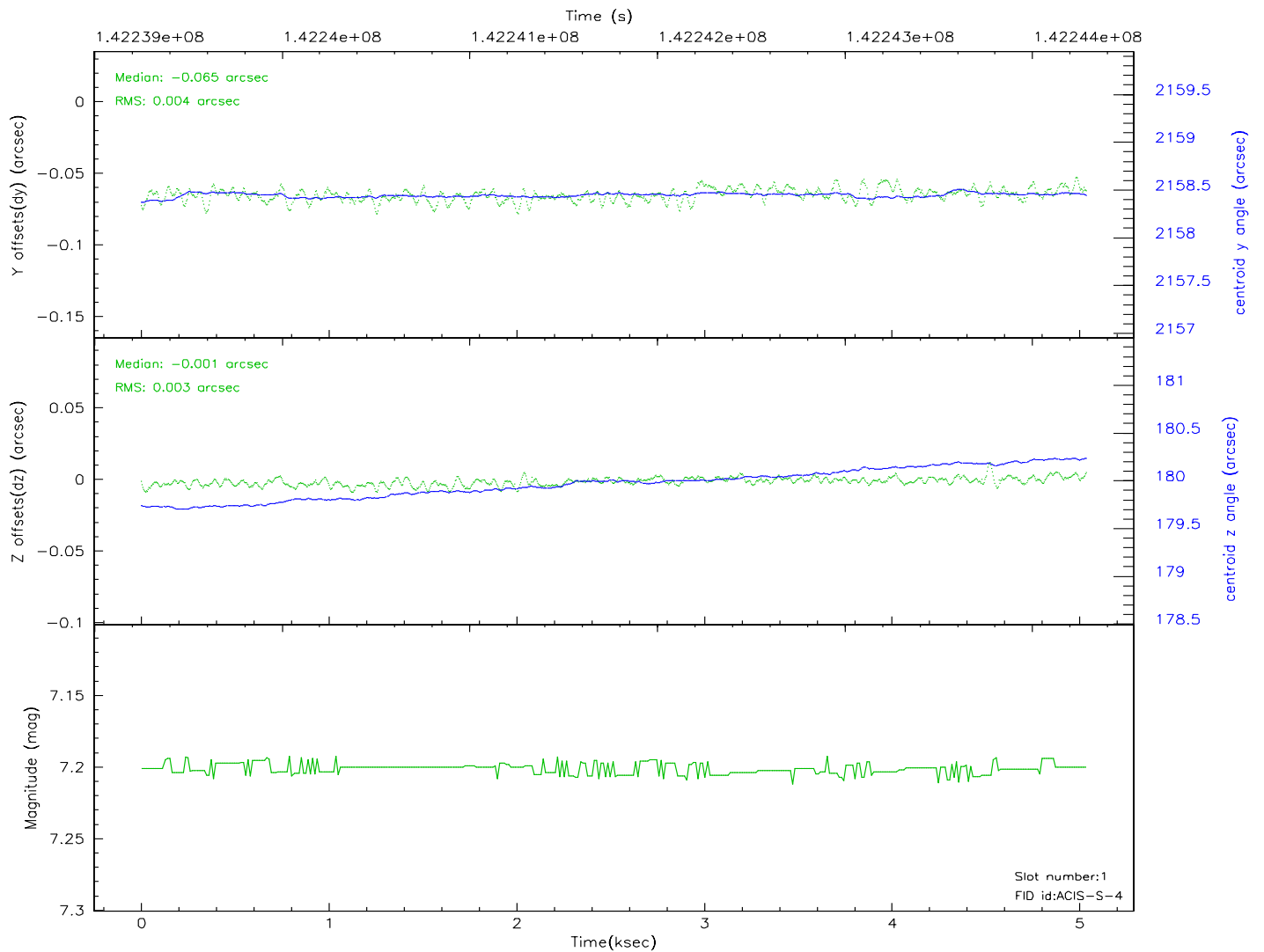
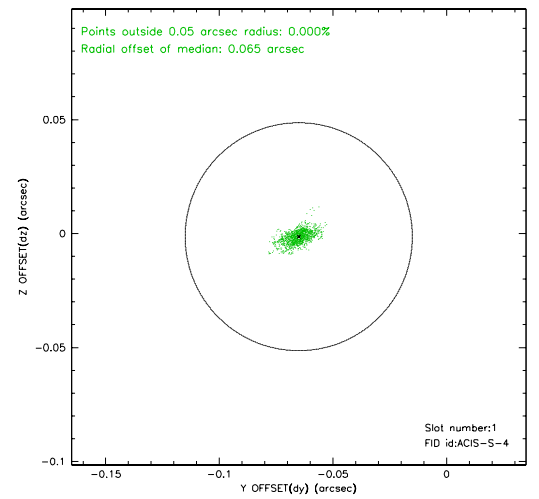
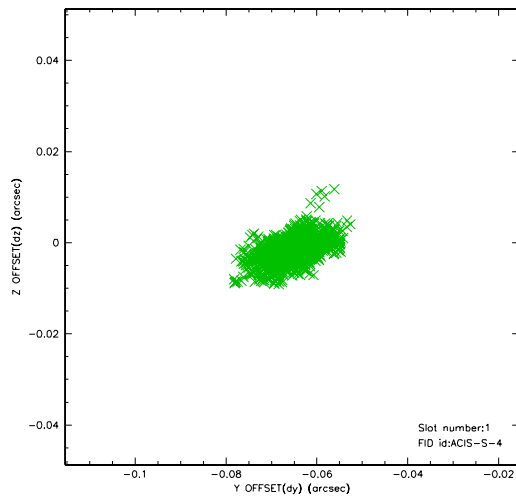


## 2.5 FID Slots

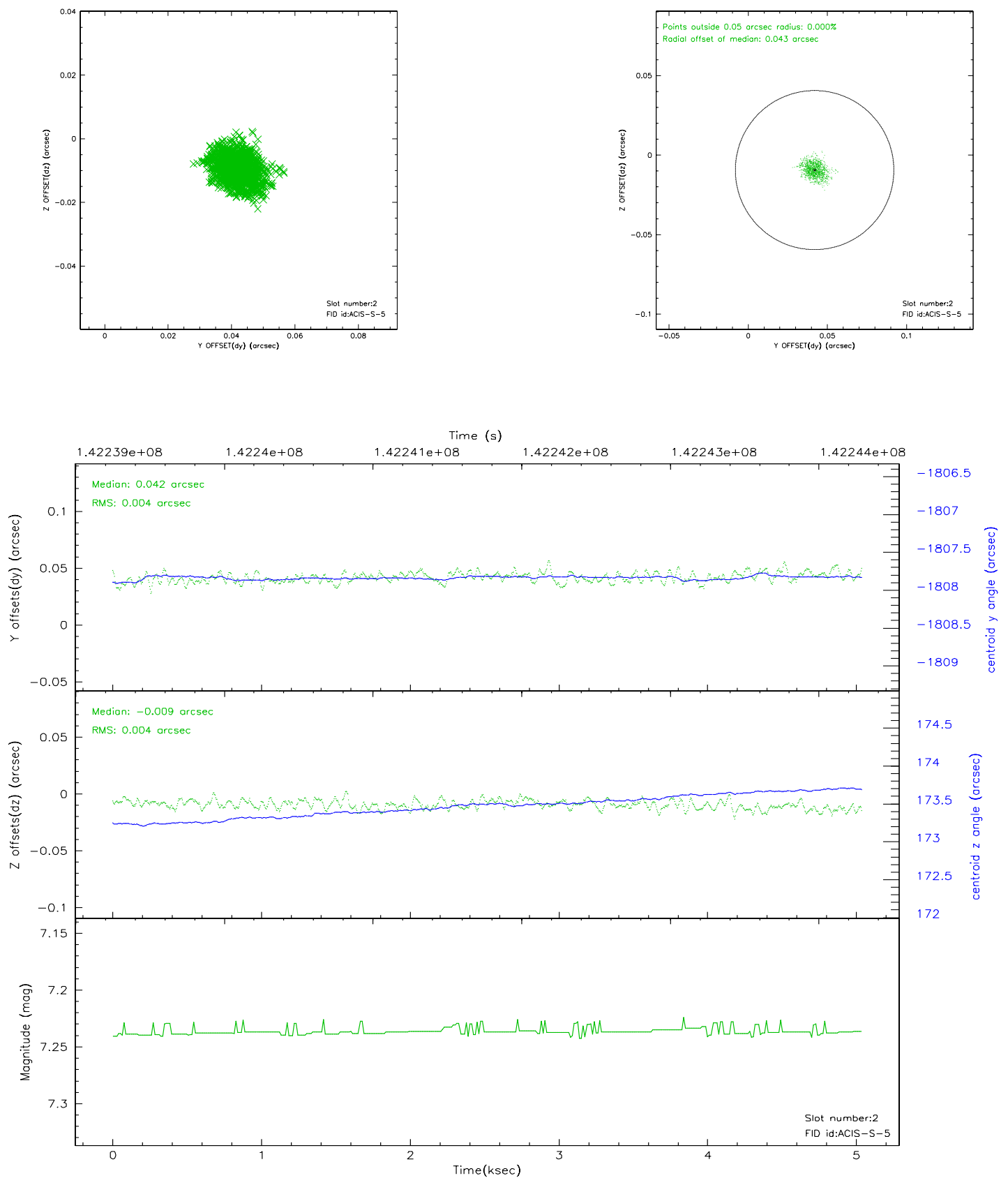
### 2.5.1 Slot 0



## 2.5.2 Slot 1

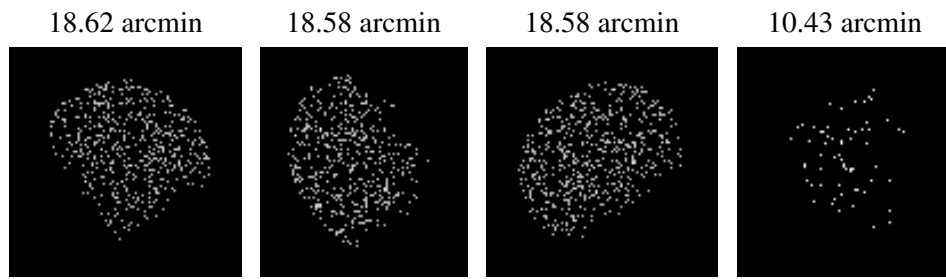


## 2.5.3 Slot 2





### 3 Point Sources



## A Summary

### A.1 Status

V&V Scientist	Jen Lauer
V&V Date (YYYY-MM-DD)	2006.09.22
V&V Edition	1
V&V Disposition and Status	OK
V&V Charge Time	4.604

### A.2 Comments