

# V&V Reference Report

## L2 ASCDS Version : 7.6.9

Observation 2986 - L2 Version 001  
Chandra X-Ray Center

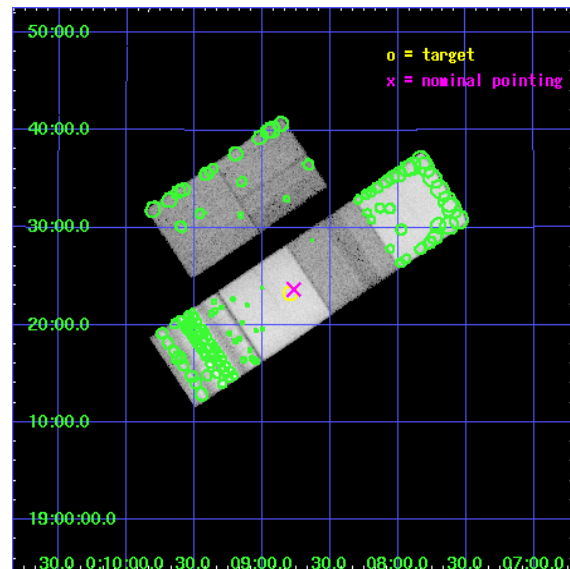
L2 Processing Date : Oct 2 2006

## Contents

<b>1</b>	<b>Front</b>	<b>2</b>
<b>2</b>	<b>OBI</b>	<b>3</b>
2.1	OBI . . . . .	3
2.1.1	Images . . . . .	3
2.1.2	Bias . . . . .	3
2.1.3	Parameters . . . . .	4
2.1.4	Events . . . . .	4
2.2	Compared Parameters . . . . .	5
2.3	Aspect . . . . .	6
2.4	Star Slots . . . . .	9
2.4.1	Slot 3 . . . . .	9
2.4.2	Slot 4 . . . . .	10
2.4.3	Slot 5 . . . . .	11
2.4.4	Slot 6 . . . . .	12
2.4.5	Slot 7 . . . . .	13
2.5	FID Slots . . . . .	14
2.5.1	Slot 0 . . . . .	14
2.5.2	Slot 1 . . . . .	15
2.5.3	Slot 2 . . . . .	16
<b>3</b>	<b>Point Sources</b>	<b>17</b>
<b>A</b>	<b>Summary</b>	<b>18</b>
A.1	Status . . . . .	18
A.2	Comments . . . . .	18

# 1 Front

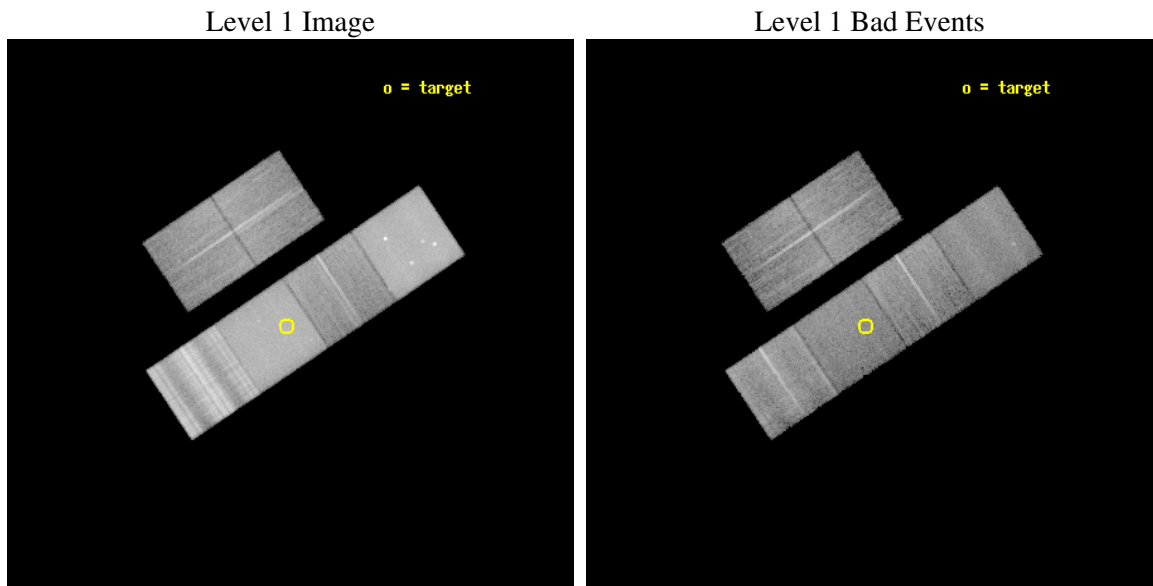
seq_num	700425
obs_id	2986
title	CHANDRA OBSERVATIONS OF A POPULATION OF TYPE 2 QUASARS DISCOVERED IN THE DPOSS
observer	PROF. S. DJORGOVSKI
object	PSS 0008+1923
dtcycle	0
cycle	P
ra_targ	2.199583
dec_targ	19.387778
ra_nom	2.1921772433882
dec_nom	19.394488258278
roll_nom	146.12180962979
revision	2
ontime	14393.59994638
livetime	14211.339517073
ontime2	14393.59994638
ontime3	14393.59994638
ontime5	14393.59994638
ontime6	14393.59994638
ontime7	14393.59994638
ontime8	14393.59994638
l2events	589181



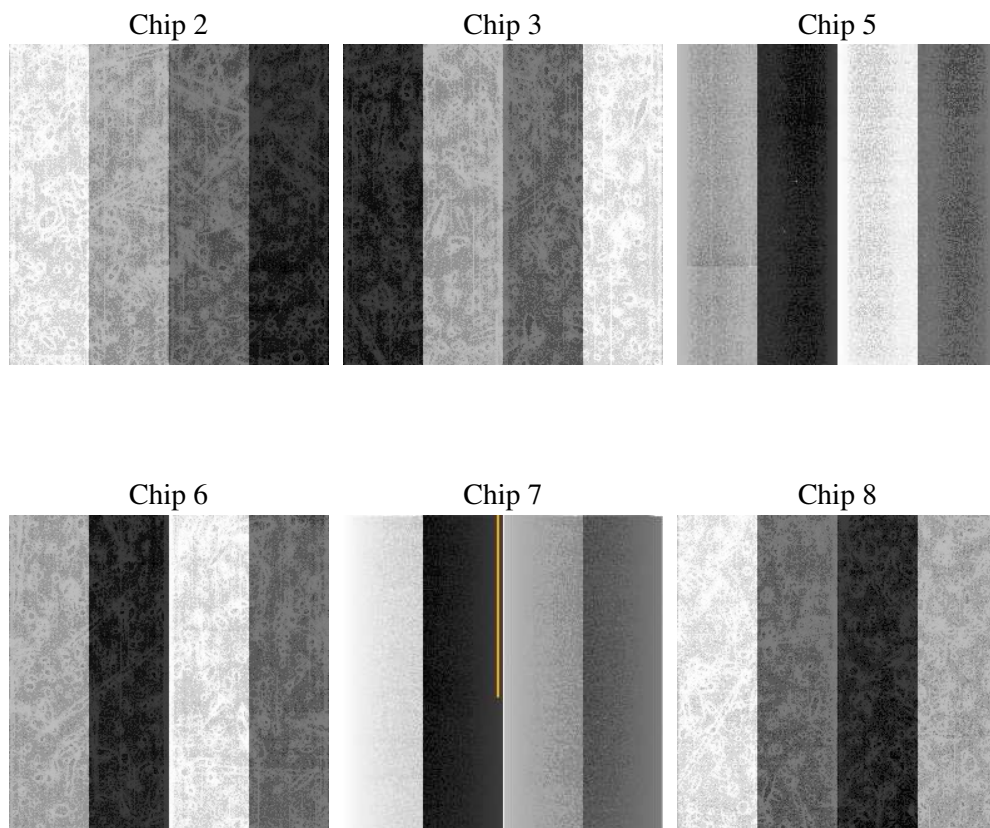
## 2 OBI

### 2.1 OBI

#### 2.1.1 Images



#### 2.1.2 Bias



### 2.1.3 Parameters

obi_num	1
ascdsver	7.6.9
caldsver	3.2.3
date	2006-10-02T22:58:01
revision	2

sched_exp_time	14432.834000
ontime	14396.553264737
ontime2	14396.553244829
ontime3	14396.553264737
ontime5	14396.553264737
ontime6	14396.553244829
ontime7	14396.553264737
ontime8	14396.553264737
l1events	1366281

### 2.1.4 Events

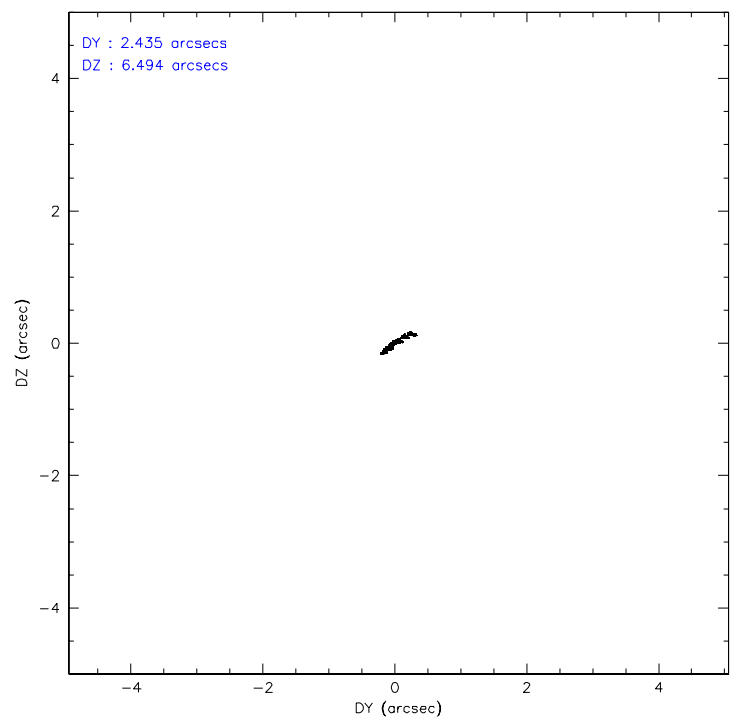
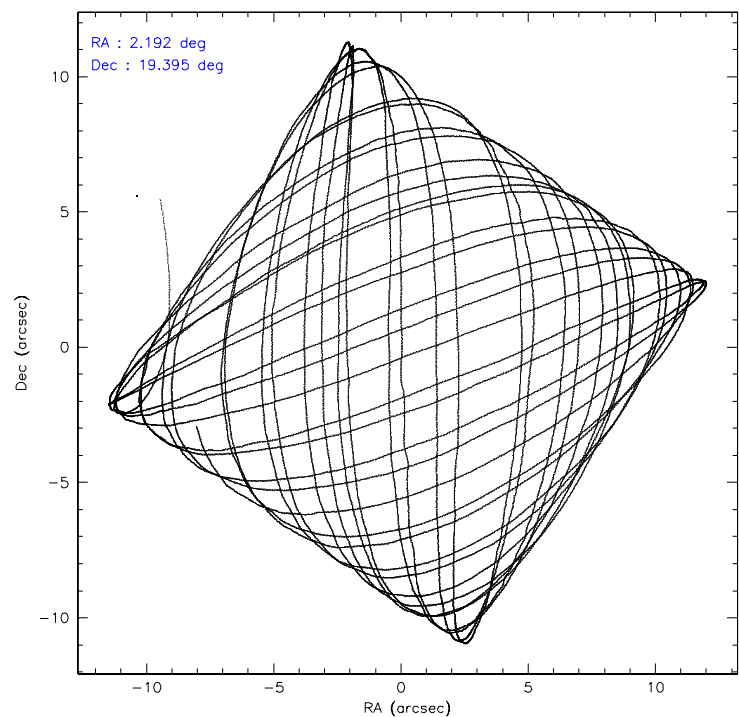
	ccd 2	ccd 3	ccd 5	ccd 6	ccd 7	ccd 8
level 1 events	152405	143919	301362	159218	274957	334420
rejected events	114136	108367	103393	115338	95575	131817
rejected %	74%	75%	34%	72%	34%	39%

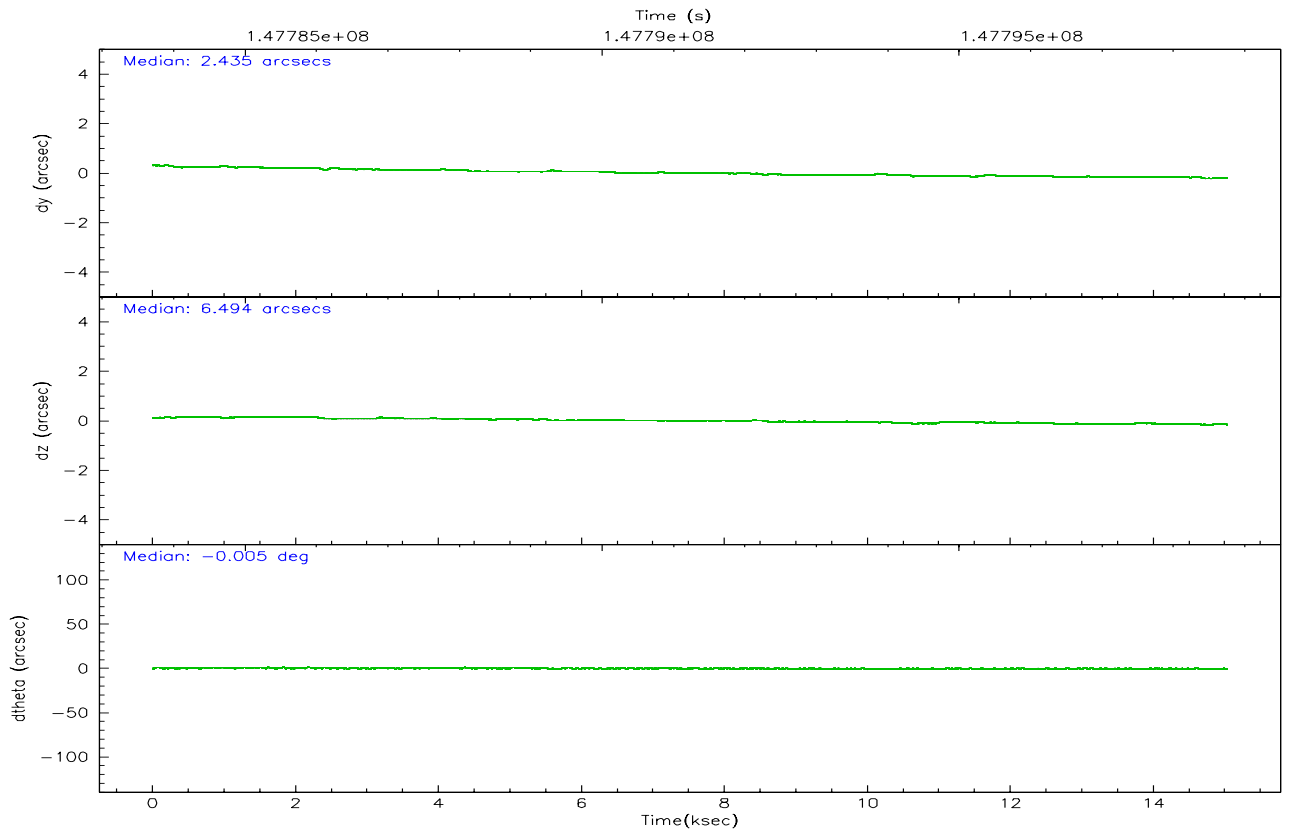
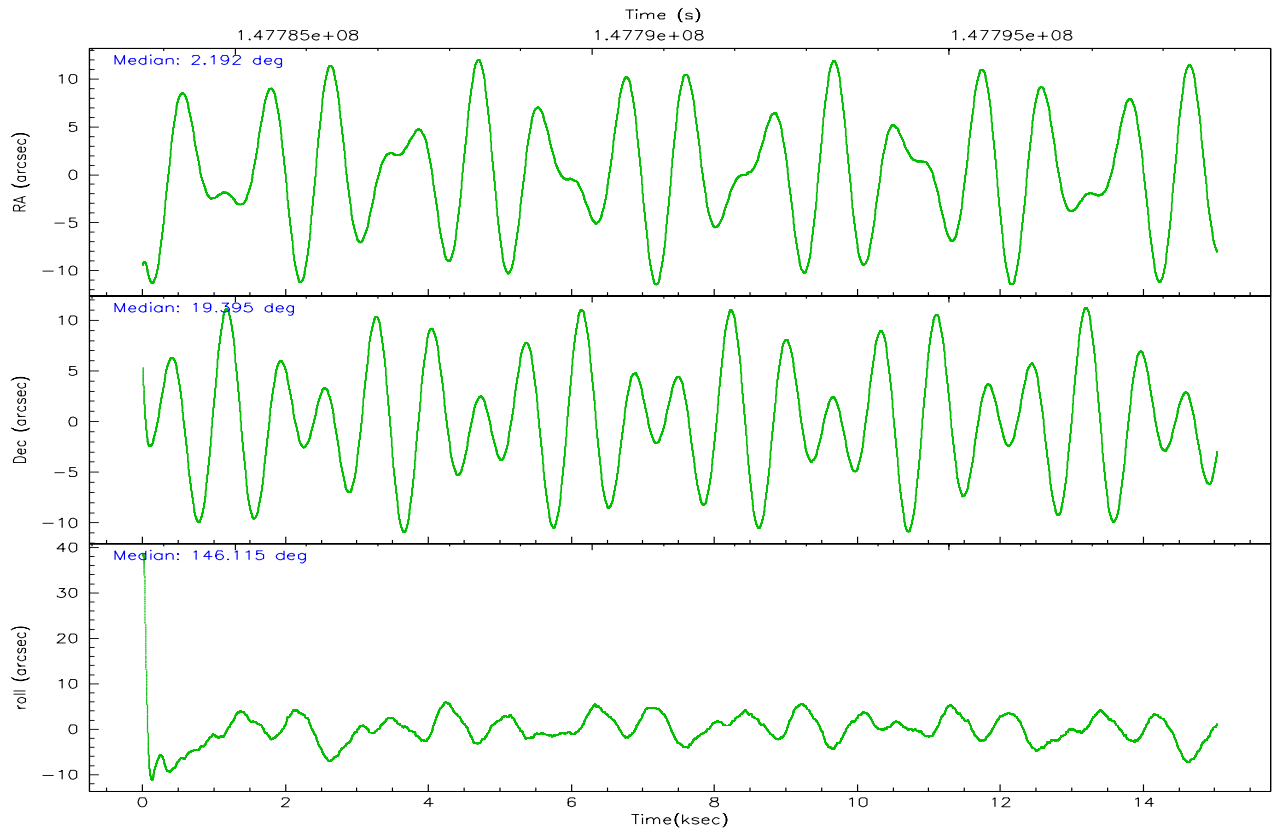
	ccd 2	ccd 3	ccd 5	ccd 6	ccd 7	ccd 8
grade 0 events	23013	20682	24940	27222	16791	75715
	15%	14%	8%	17%	6%	22%
grade 1 events	155	134	215	170	111	550
	0%	0%	0%	0%	0%	0%
grade 2 events	7140	6786	63209	8603	38624	26230
	4%	4%	20%	5%	14%	7%
grade 3 events	1591	1631	7686	1654	10291	33728
	1%	1%	2%	1%	3%	10%
grade 4 events	2169	1721	7496	1743	10193	29969
	1%	1%	2%	1%	3%	8%
grade 5 events	3710	3825	8506	4099	9234	6960
	2%	2%	2%	2%	3%	2%
grade 6 events	4382	4757	94748	4692	103590	37039
	2%	3%	31%	2%	37%	11%
grade 7 events	110245	104383	94562	111035	86123	124229
	72%	72%	31%	69%	31%	37%

## 2.2 Compared Parameters

Parameter	Planned	Actual	Parameter	Planned	Actual
Instrument	ACIS	ACIS	Obspar format version number	6	6
Detector	ACIS-235678	ACIS-235678	Obspar file type	PREDICTED	ACTUAL
Grating	NONE	NONE	Obspar update status	NONE	UPDATED
Data mode	FAINT	FAINT	Number of optional ACIS chips dropped	0	0
Observation mode	POINTING	POINTING	On-chip summing requested	N	N
Pointing RA	2.221037	2.192177243388216	Subarray requested	NONE	NONE
Pointing Dec	19.393021	19.39448825827808	Alternating exposures requested	N	N
Pointing Roll	145.955553	146.1218096297883	Primary exposure time	0.000000	3.2
SIM focus pos (mm)	-0.684267	-0.6828225247311905			
SIM defocus (mm)	0	0.001444936568705701			
SIM translation stage pos (mm)	-190.132523	-190.145094680475			
SIM translation stage offset (mm)	0	0.01257209746719923			
Observation start time	147784315.184000	147783143.16487			
Observation start date	2002-09-07T11:10:51	2002-09-07T10:52:23			
Observation end time	147798748.184000	147799496.52804			
Observation end date	2002-09-07T15:11:24	2002-09-07T15:24:56			
Read mode	TIMED	TIMED			

## 2.3 Aspect





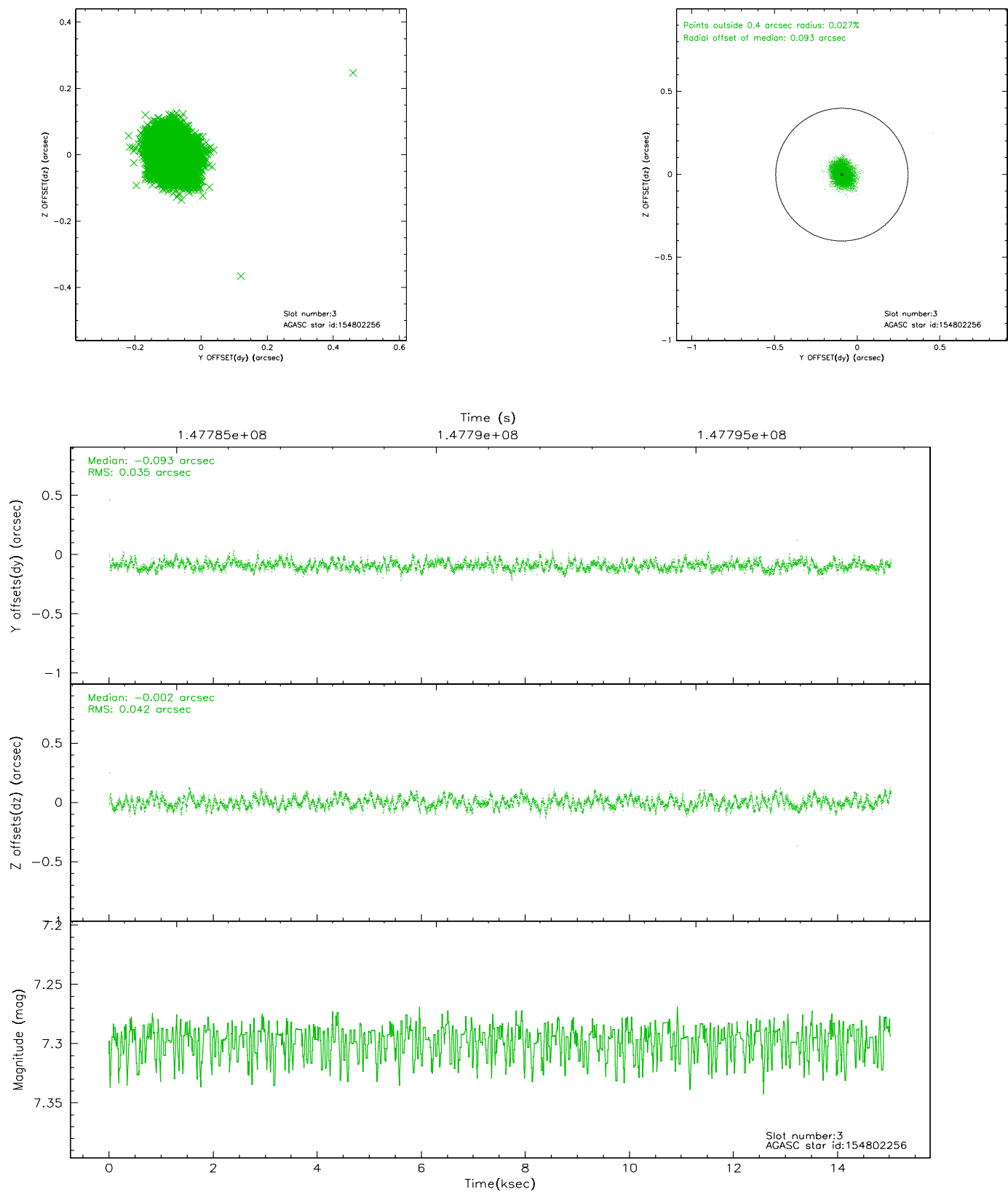
### Slot Statistics

slot	status	id	mag	n_pts	med_dy	med_dz	dr1	dr2	ra	dec	mean_y	mean_z
0	FID	ACIS-S-2	7.11	3666	-0.028	0.035	0.007	0.010	0.000000	0.000000	-755.08	-1727.52
1	FID	ACIS-S-4	7.20	3666	-0.054	0.004	0.006	0.010	0.000000	0.000000	2158.00	180.66
2	FID	ACIS-S-5	7.24	3666	0.052	-0.030	0.009	0.015	0.000000	0.000000	-1807.48	174.58
3	GUIDE	154802256	7.30	7332	-0.093	-0.002	0.058	0.091	2.267963	19.924686	939.36	-1674.57
4	GUIDE	154801840	7.49	7332	-0.103	-0.040	0.062	0.094	2.379255	19.559095	-110.61	-796.00
5	GUIDE	154803008	8.59	7332	0.083	0.022	0.061	0.097	2.452046	19.381170	-674.43	-404.15
6	GUIDE	155193224	9.12	7329	0.032	0.025	0.110	0.188	2.130274	20.267286	2015.58	-2435.90
7	GUIDE	154933224	9.89	7323	0.086	-0.001	0.116	0.190	2.811766	19.395438	-1655.54	-1133.30

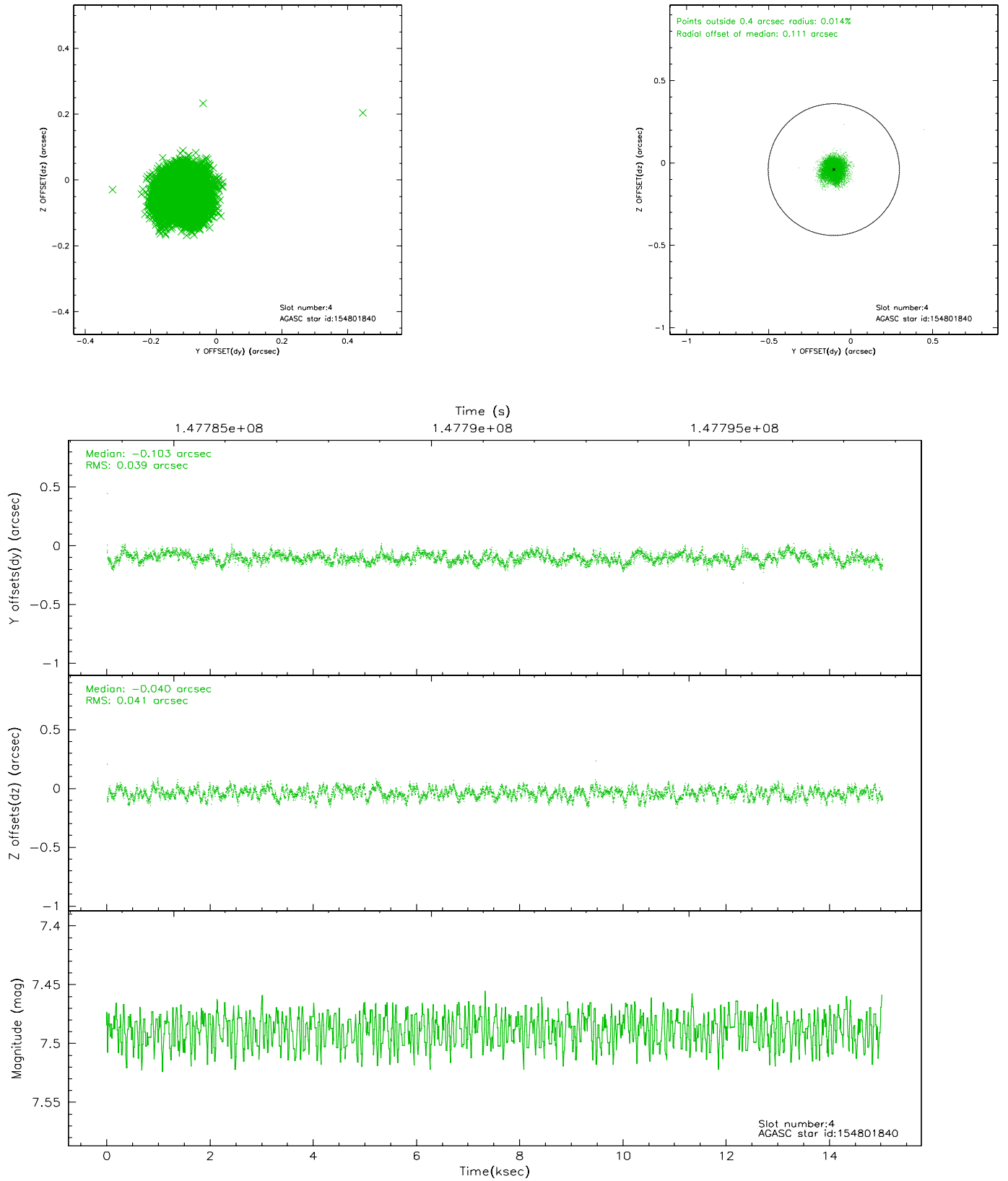


## 2.4 Star Slots

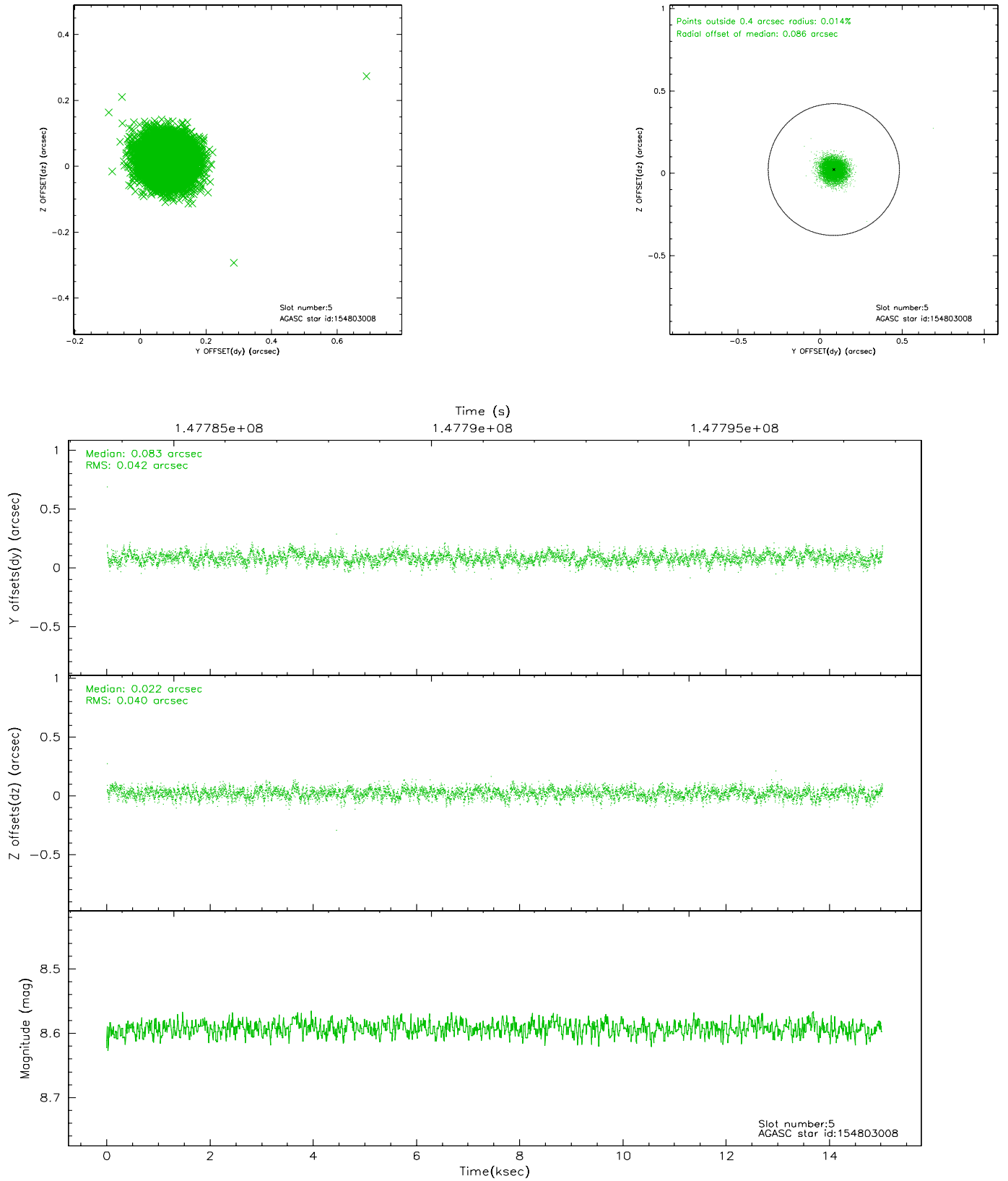
### 2.4.1 Slot 3



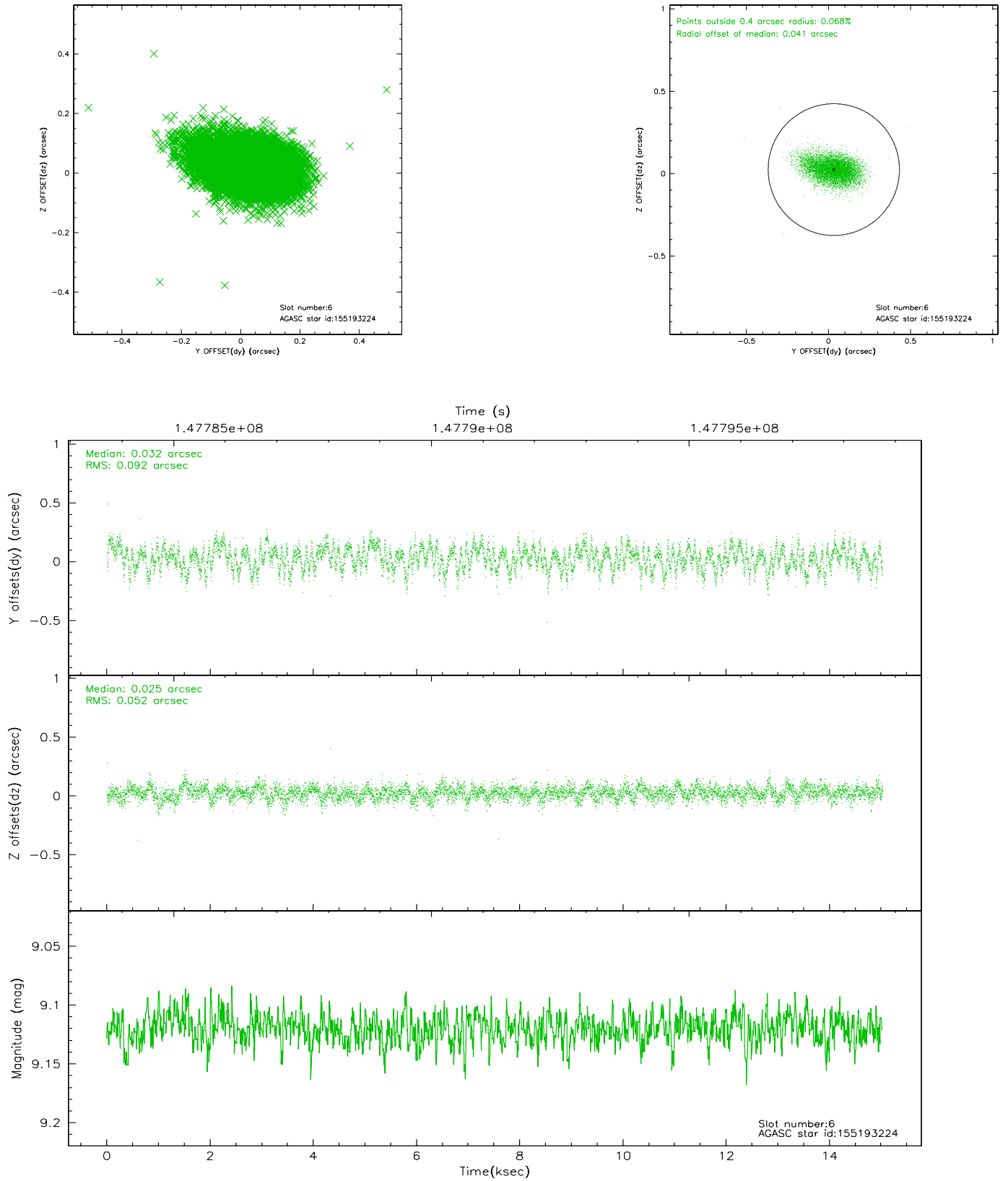
## 2.4.2 Slot 4



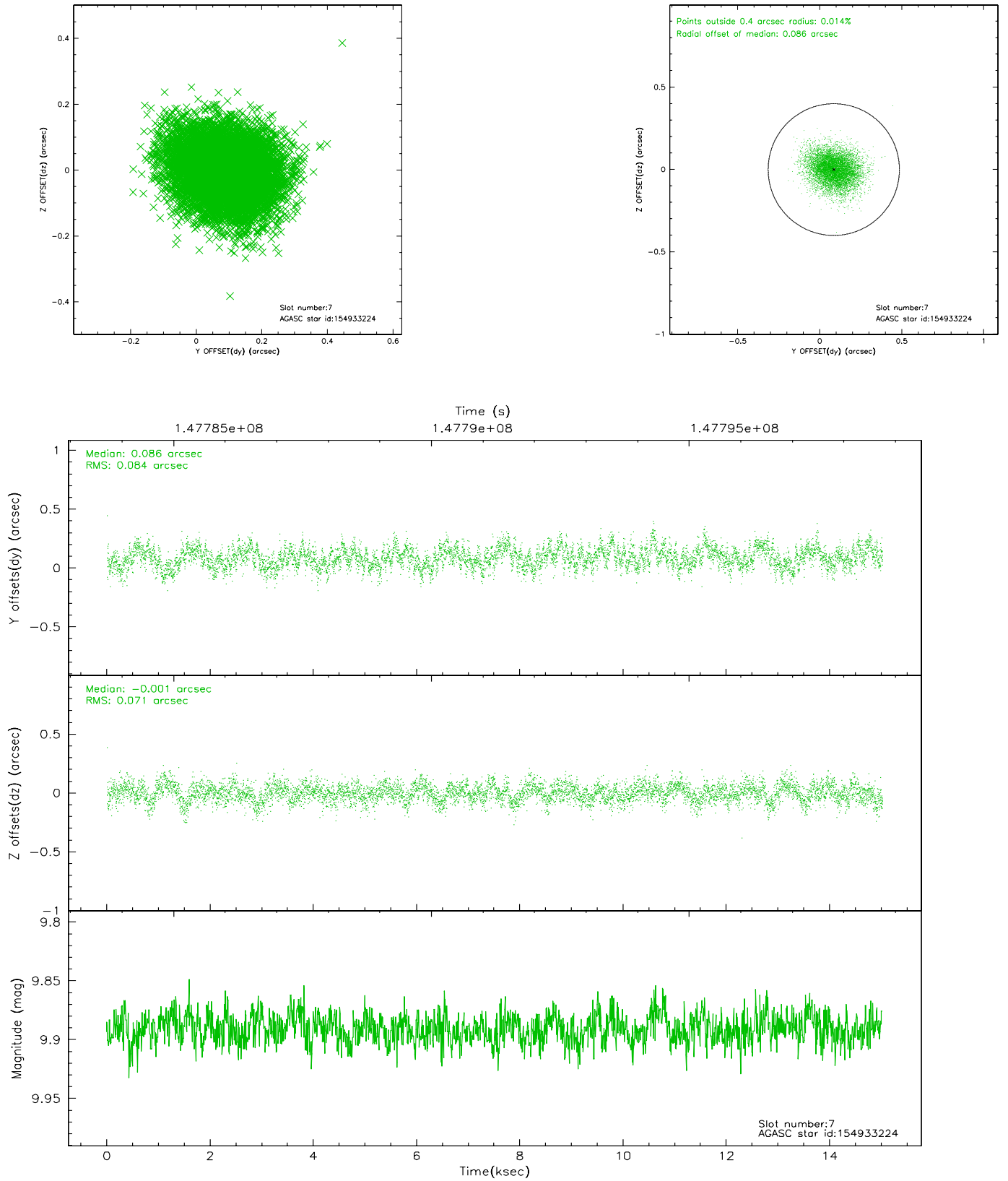
### 2.4.3 Slot 5



## 2.4.4 Slot 6

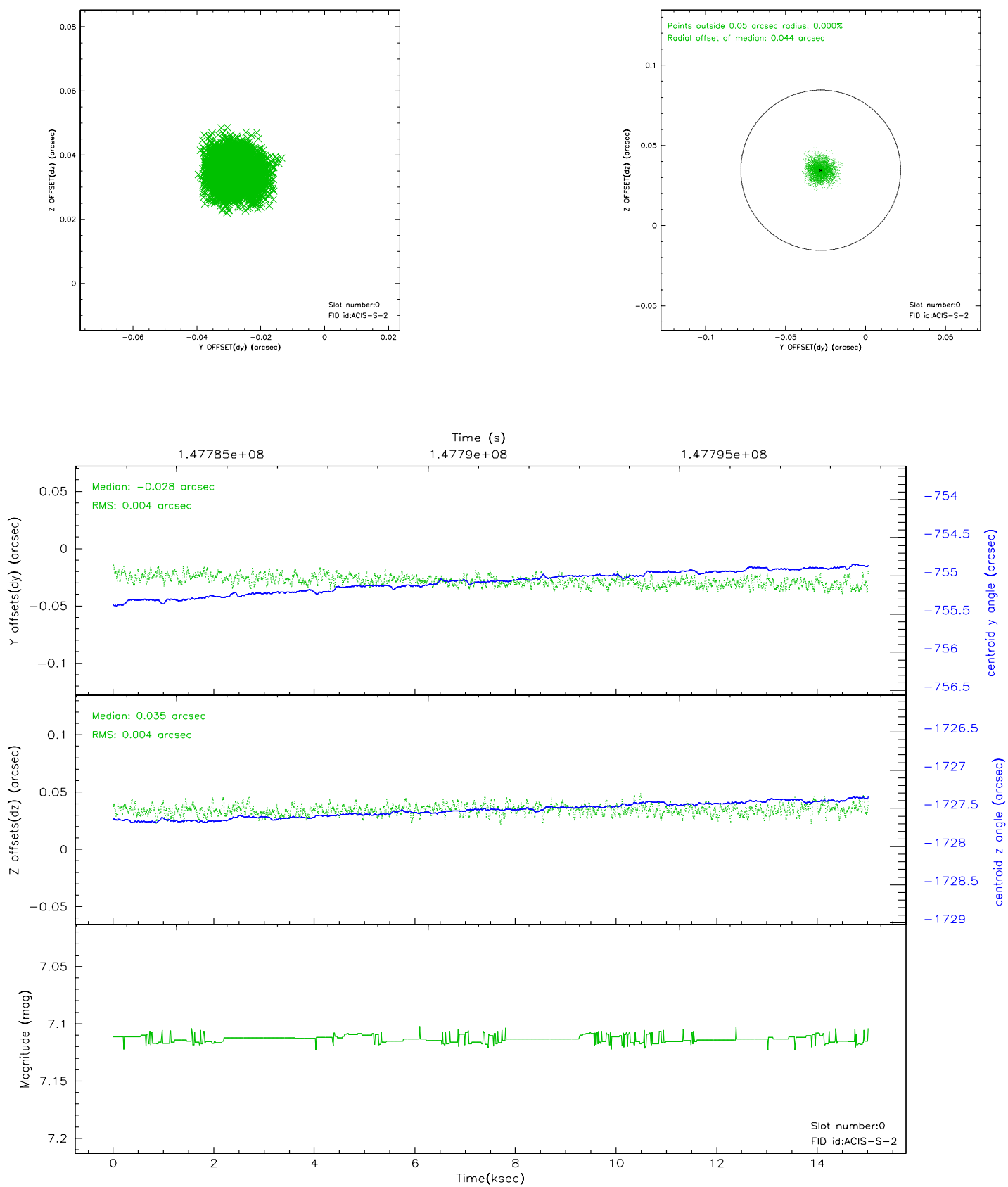


## 2.4.5 Slot 7

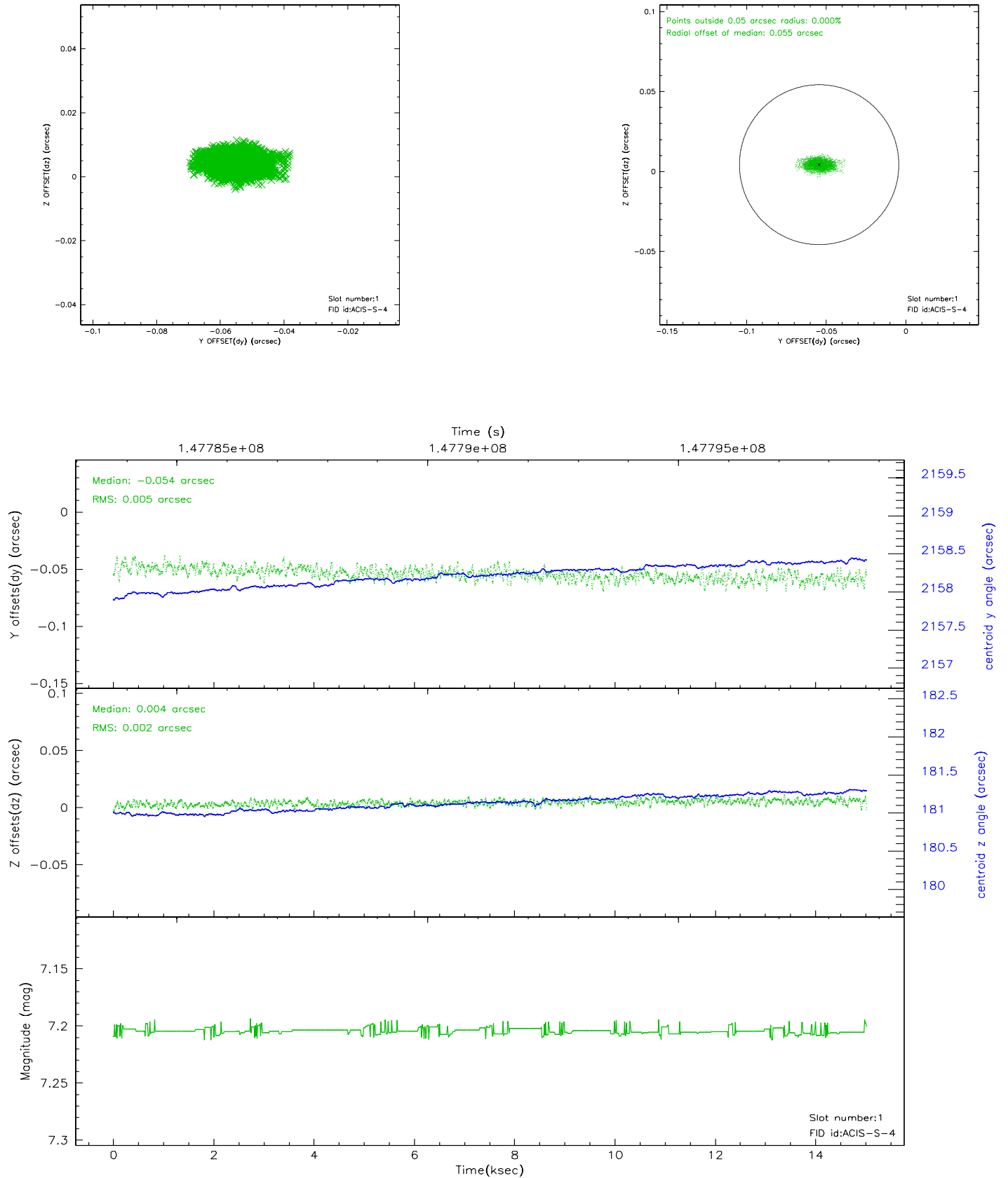


## 2.5 FID Slots

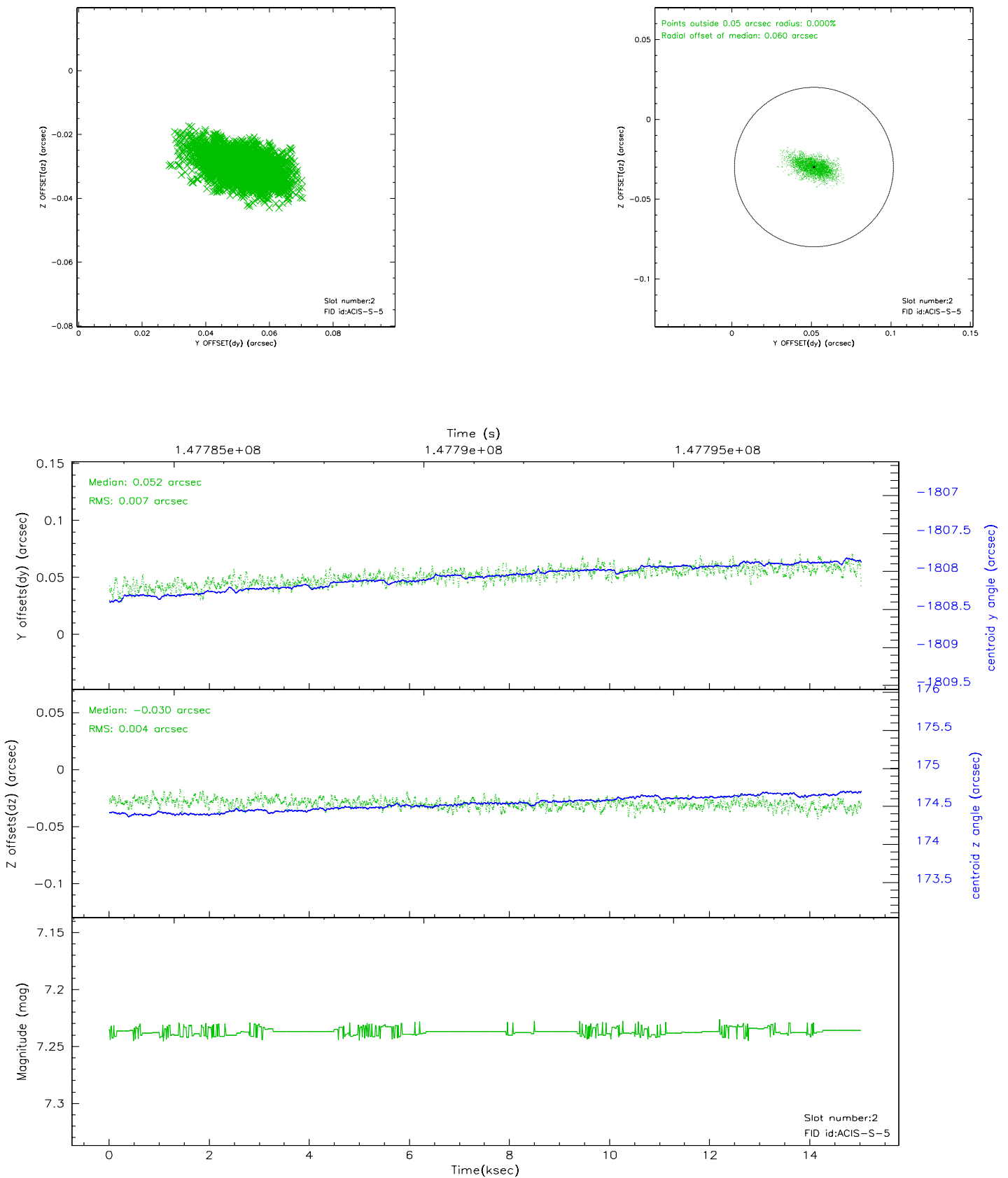
### 2.5.1 Slot 0



## 2.5.2 Slot 1

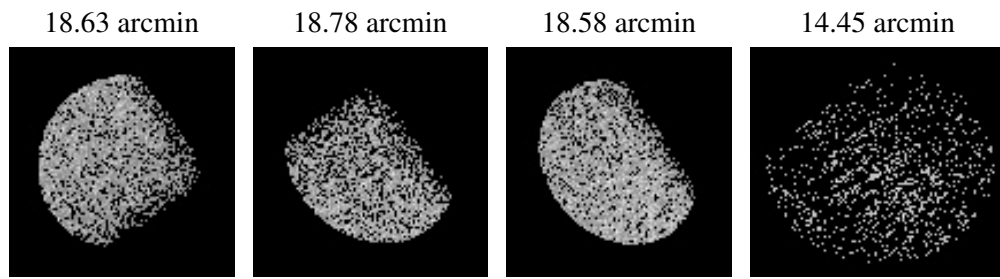


### 2.5.3 Slot 2





### 3 Point Sources



## A Summary

### A.1 Status

V&V Scientist	Beth Sundheim
V&V Date (YYYY-MM-DD)	2006.10.03
V&V Edition	1
V&V Disposition and Status	OK
V&V Charge Time	14.393

### A.2 Comments