

V&V Reference Report

L2 ASCDS Version : 7.6.9

Observation 2576 - L2 Version 001
Chandra X-Ray Center

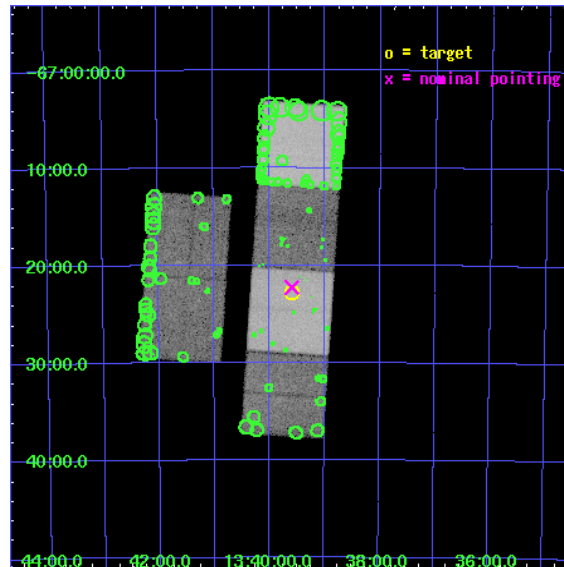
L2 Processing Date : Oct 16 2006

Contents

1	Front	2
2	OBI	3
2.1	OBI	3
2.1.1	Images	3
2.1.2	Bias	3
2.1.3	Parameters	4
2.1.4	Events	4
2.2	Compared Parameters	5
2.3	Aspect	6
2.4	Star Slots	9
2.4.1	Slot 3	9
2.4.2	Slot 4	10
2.4.3	Slot 5	11
2.4.4	Slot 6	12
2.4.5	Slot 7	13
2.5	FID Slots	14
2.5.1	Slot 0	14
2.5.2	Slot 1	15
2.5.3	Slot 2	16
3	Point Sources	17
A	Summary	18
A.1	Status	18
A.2	Comments	18

1 Front

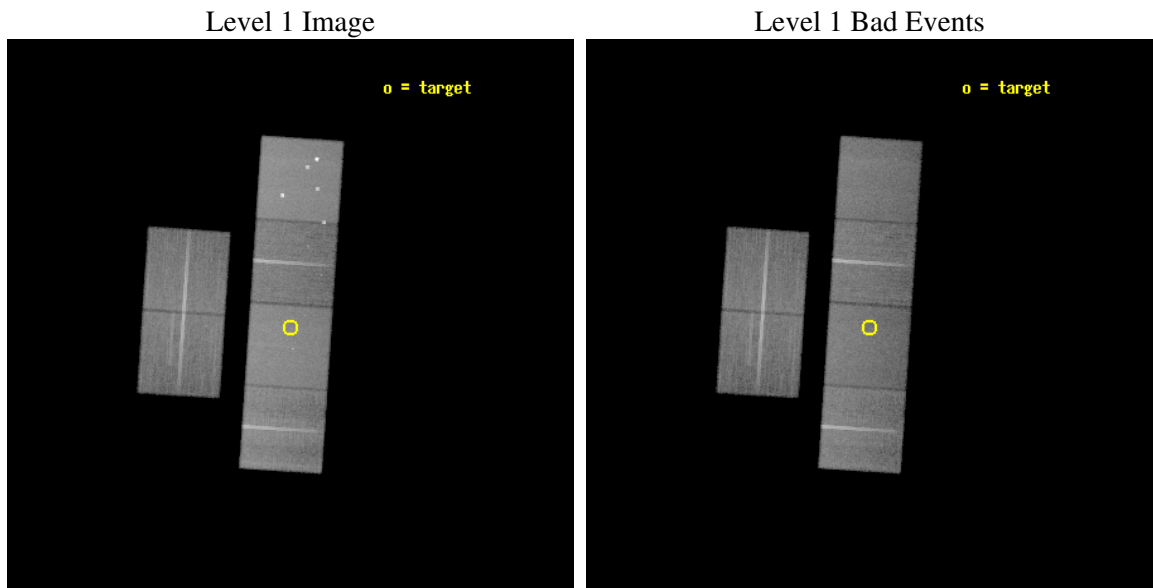
seq_num	200184
obs_id	2576
title	INVESTIGATING COLLIDING WINDS AND MAGNETISED STARS IN YOUNG PLANETARY NEBULAE IMAGED WITH HST
observer	Dr. Raghvendra Sahai
object	MYCN 18
dtcycle	0
cycle	P
ra_targ	204.894583
dec_targ	-67.380833
ra_nom	204.89733459318
dec_nom	-67.371249426701
roll_nom	93.839208769861
revision	2
ontime	39964.79985112
livetime	39458.741491491
ontime2	39961.55889082
ontime3	39964.79985112
ontime5	39964.79985112
ontime6	39964.79985112
ontime7	39964.79985112
ontime8	39964.79985112
l2events	398681



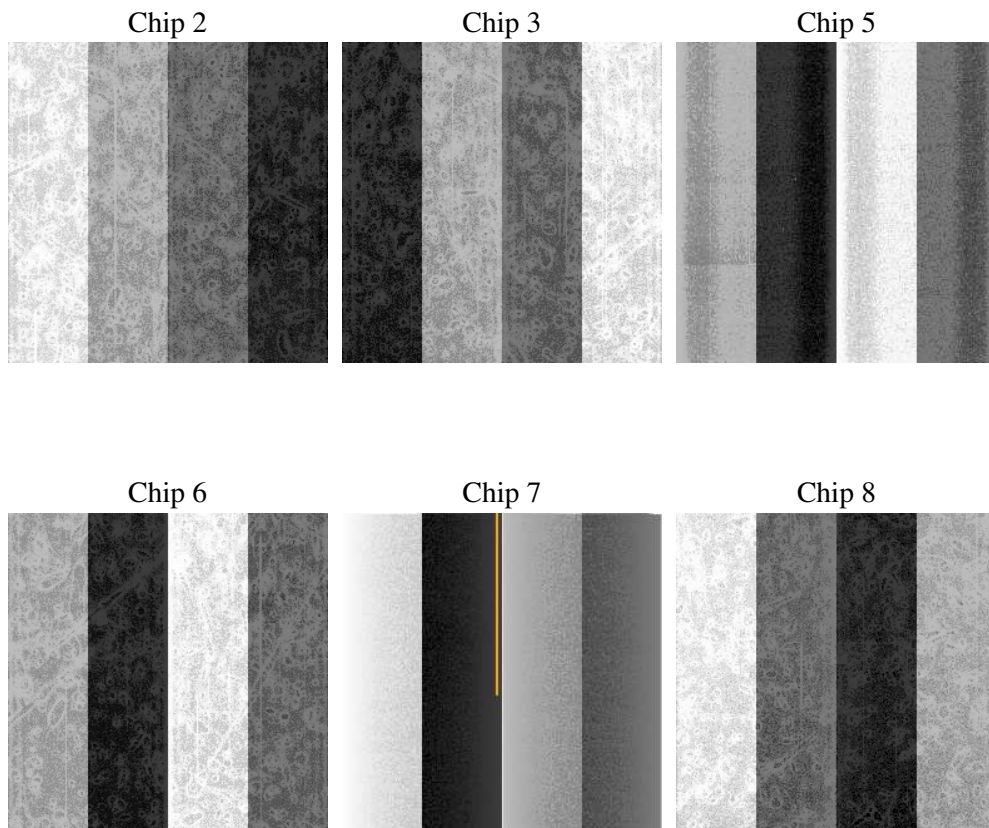
2 OBI

2.1 OBI

2.1.1 Images



2.1.2 Bias



2.1.3 Parameters

obi_num	1
ascdsver	7.6.9
caldsver	3.2.3
date	2006-10-16T06:43:09
revision	2

sched_exp_time	40000.000000
ontime	39968.01118049
ontime2	39964.77022019
ontime3	39968.01118049
ontime5	39968.011210412
ontime6	39968.01118049
ontime7	39968.01118049
ontime8	39968.01118049
l1events	1824302

2.1.4 Events

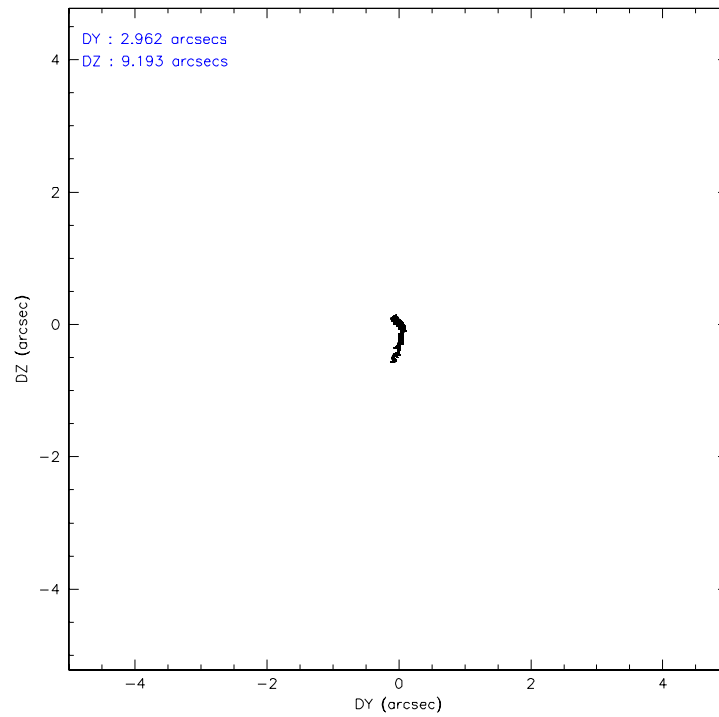
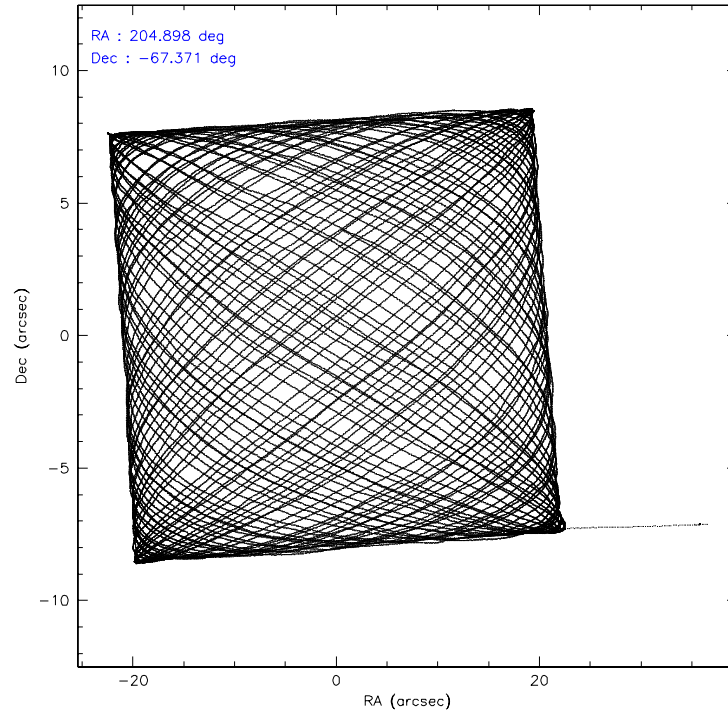
	ccd 2	ccd 3	ccd 5	ccd 6	ccd 7	ccd 8
level 1 events	262256	249973	392896	258078	341436	319663
rejected events	231526	220709	206825	226770	207810	253161
rejected %	88%	88%	52%	87%	60%	79%

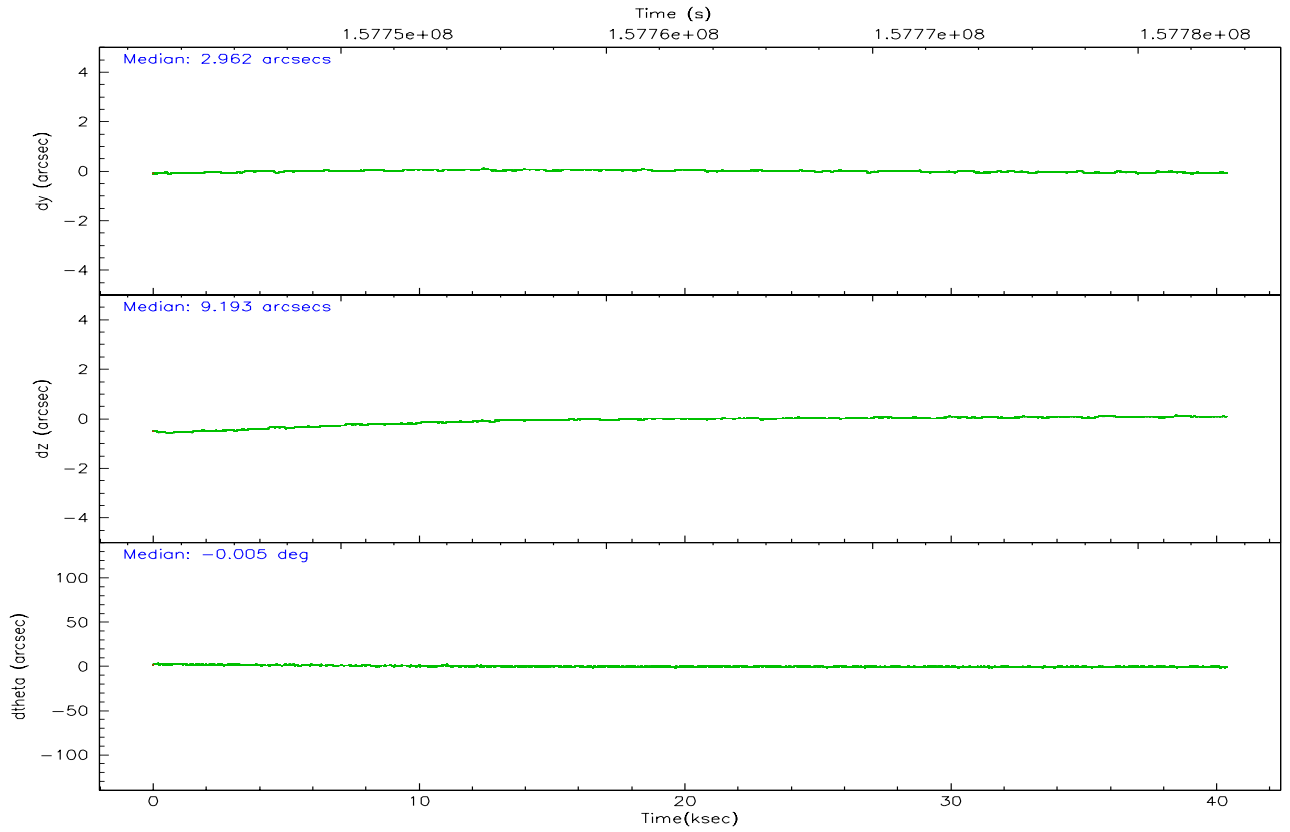
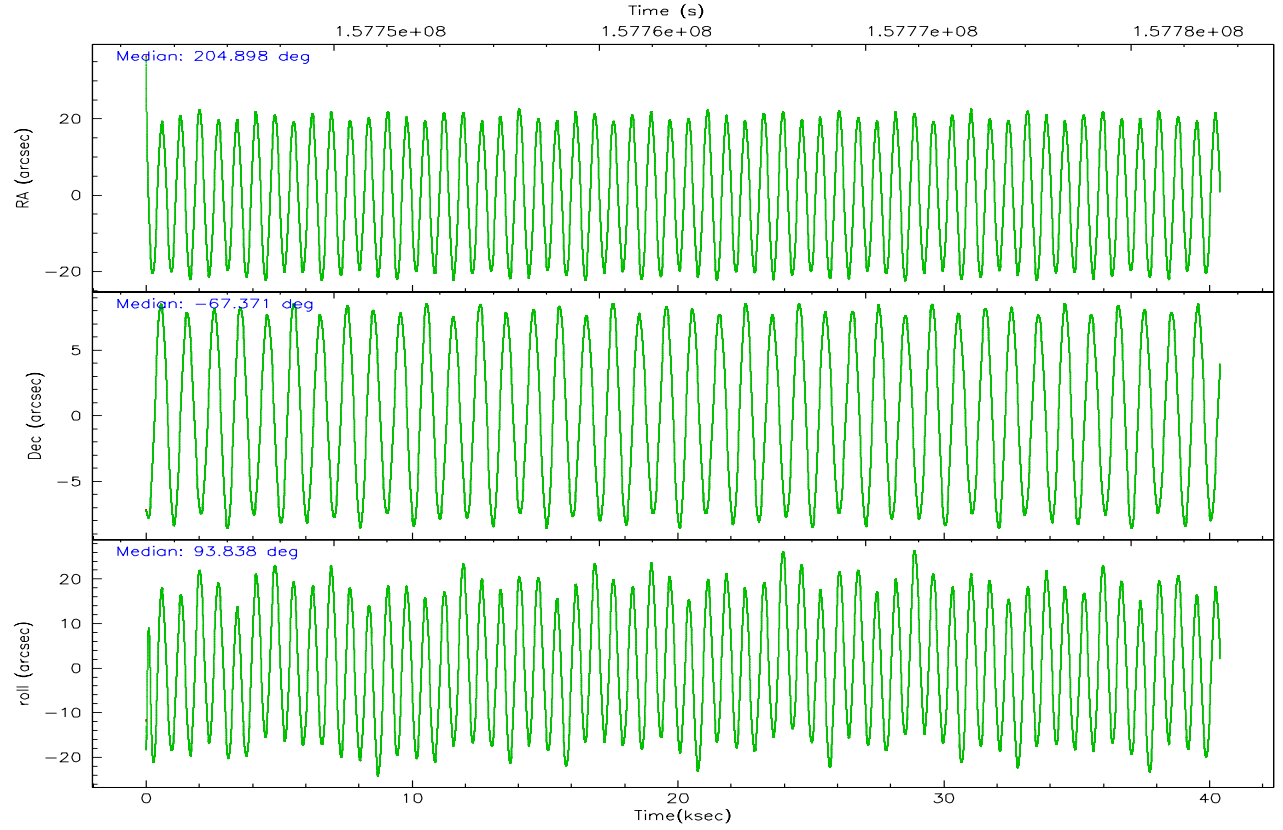
	ccd 2	ccd 3	ccd 5	ccd 6	ccd 7	ccd 8
grade 0 events	14101	13049	26523	12988	8343	21245
	5%	5%	6%	5%	2%	6%
grade 1 events	141	165	443	108	182	237
	0%	0%	0%	0%	0%	0%
grade 2 events	6030	5503	56529	6314	33052	14588
	2%	2%	14%	2%	9%	4%
grade 3 events	2839	2854	4212	3058	6941	6970
	1%	1%	1%	1%	2%	2%
grade 4 events	2834	2887	4016	3010	6892	6647
	1%	1%	1%	1%	2%	2%
grade 5 events	9988	10941	18155	11620	22674	14764
	3%	4%	4%	4%	6%	4%
grade 6 events	4929	4974	94803	5945	78414	17055
	1%	1%	24%	2%	22%	5%
grade 7 events	221394	209600	188215	215035	184938	238157
	84%	83%	47%	83%	54%	74%

2.2 Compared Parameters

Parameter	Planned	Actual	Parameter	Planned	Actual
Instrument	ACIS	ACIS	Obspar format version number	6	6
Detector	ACIS-235678	ACIS-235678	Obspar file type	PREDICTED	ACTUAL
Grating	NONE	NONE	Obspar update status	NONE	UPDATED
Data mode	FAINT	FAINT	Number of optional ACIS chips dropped	0	0
Observation mode	POINTING	POINTING	On-chip summing requested	N	N
Pointing RA	204.937564	204.8973345931775	Subarray requested	NONE	NONE
Pointing Dec	-67.393633	-67.37124942670064	Alternating exposures requested	N	N
Pointing Roll	93.719736	93.83920876986053	Primary exposure time	0.000000	3.2
SIM focus pos (mm)	-0.684267	-0.6828225247311905			
SIM defocus (mm)	0	0.001444936568705701			
SIM translation stage pos (mm)	-190.132523	-190.1400660498719			
SIM translation stage offset (mm)	0	0.00754346686406393			
Observation start time	157743338.184000	157742257.29128			
Observation start date	2002-12-31T17:34:34	2002-12-31T17:17:37			
Observation end time	157783338.184000	157783943.53052			
Observation end date	2003-01-01T04:41:14	2003-01-01T04:52:23			
Read mode	TIMED	TIMED			

2.3 Aspect



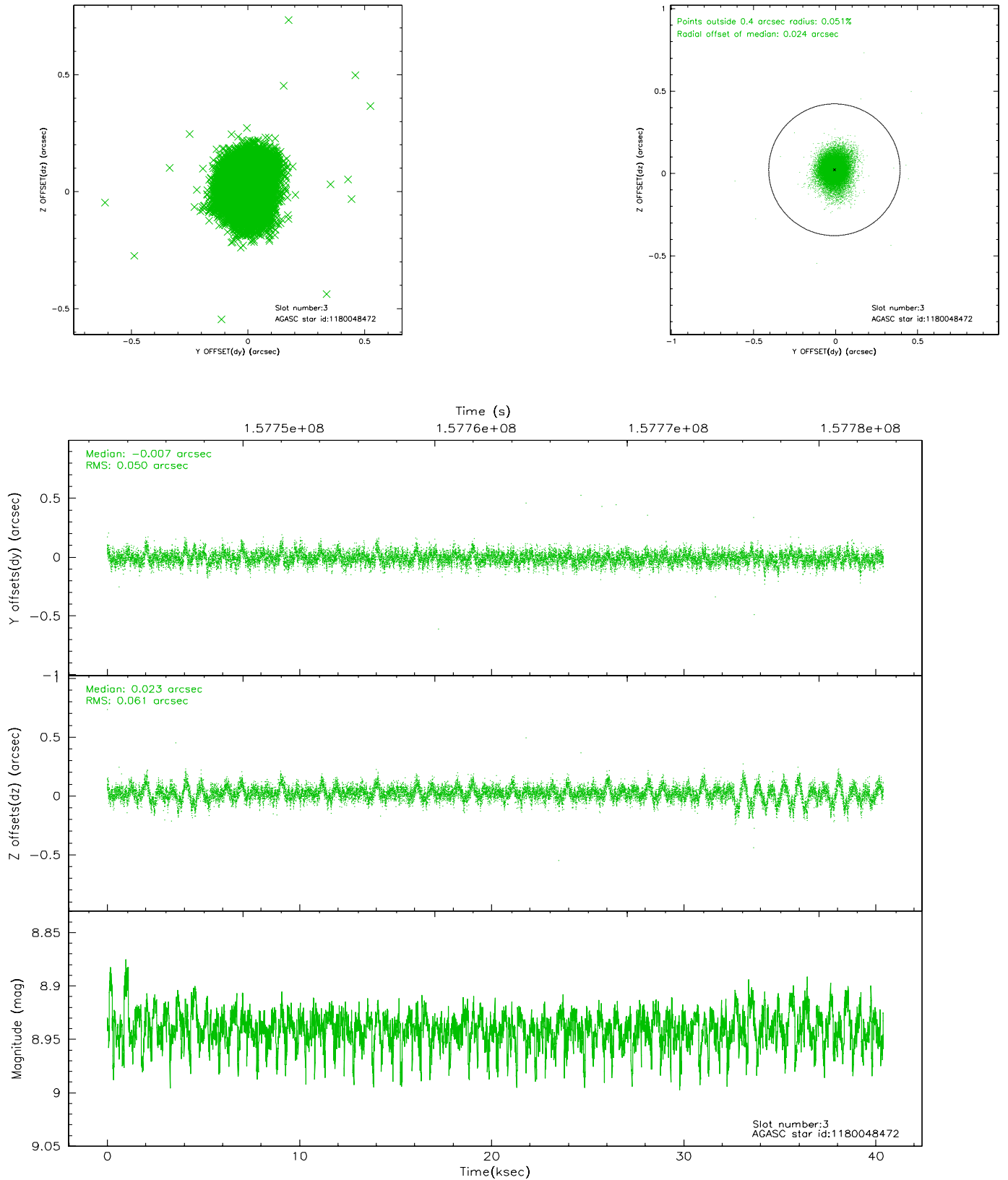


Slot Statistics

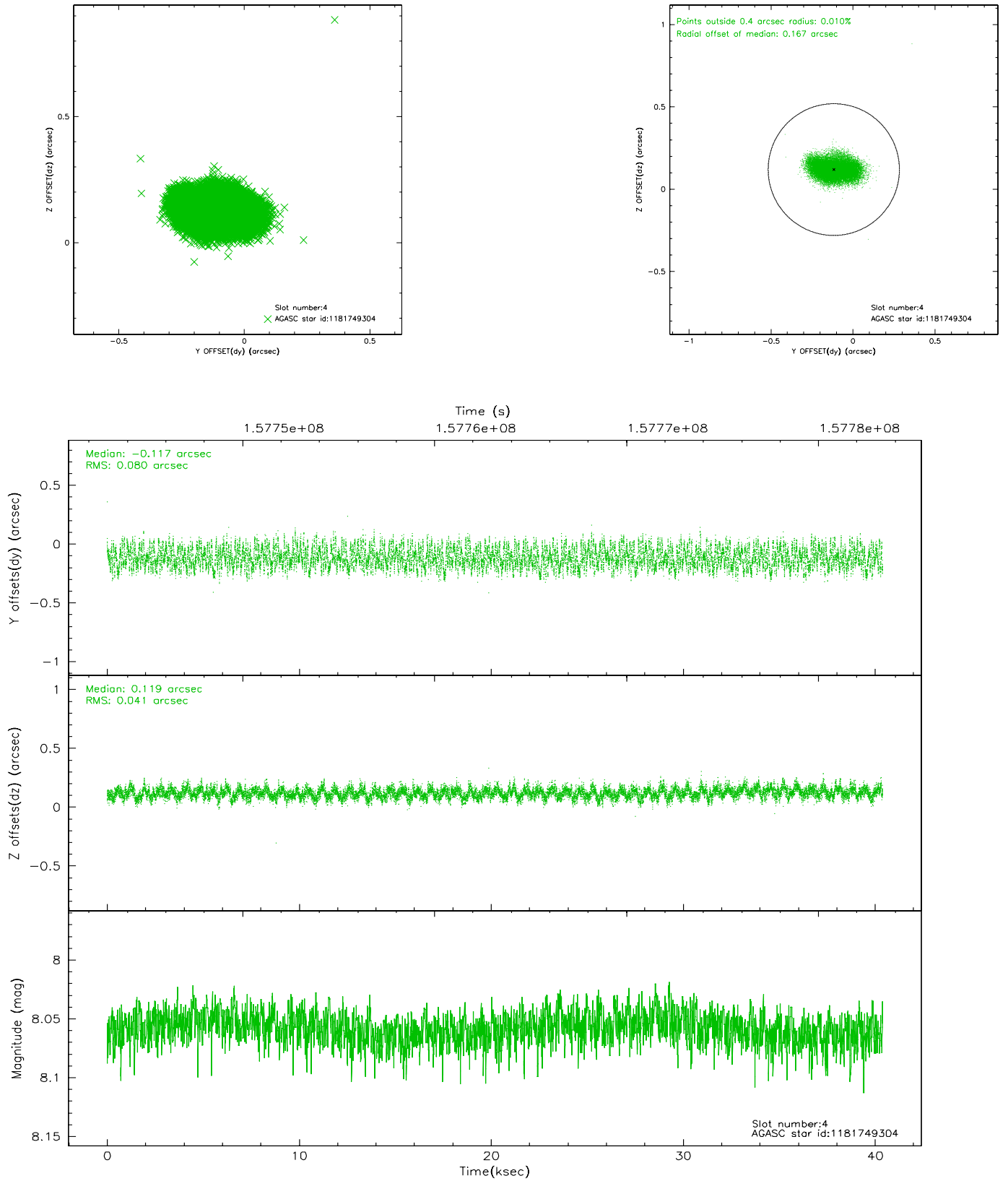
slot	status	id	mag	n_pts	med_dy	med_dz	dr1	dr2	ra	dec	mean_y	mean_z
0	FID	ACIS-S-1	7.20	9853	0.008	0.060	0.010	0.022	0.000000	0.000000	940.43	-1725.91
1	FID	ACIS-S-4	7.20	9850	-0.041	-0.041	0.007	0.013	0.000000	0.000000	2157.80	178.13
2	FID	ACIS-S-5	7.24	9851	0.005	-0.006	0.009	0.016	0.000000	0.000000	-1808.42	171.78
3	GUIDE	1180048472	8.94	19669	-0.007	0.023	0.080	0.142	205.070958	-66.928934	1657.20	-295.73
4	GUIDE	1181749304	8.06	19704	-0.117	0.119	0.097	0.155	206.326659	-66.754661	2145.77	-2116.59
5	GUIDE	1211498544	9.54	19691	0.123	-0.205	0.101	0.164	204.264385	-68.043073	-2278.72	1056.38
6	GUIDE	1211508992	9.11	19700	0.055	-0.058	0.082	0.130	204.311604	-67.711544	-1090.76	927.85
7	GUIDE	1211501128	10.11	19448	-0.057	0.127	0.120	0.205	206.769601	-67.951375	-2200.55	-2337.22

2.4 Star Slots

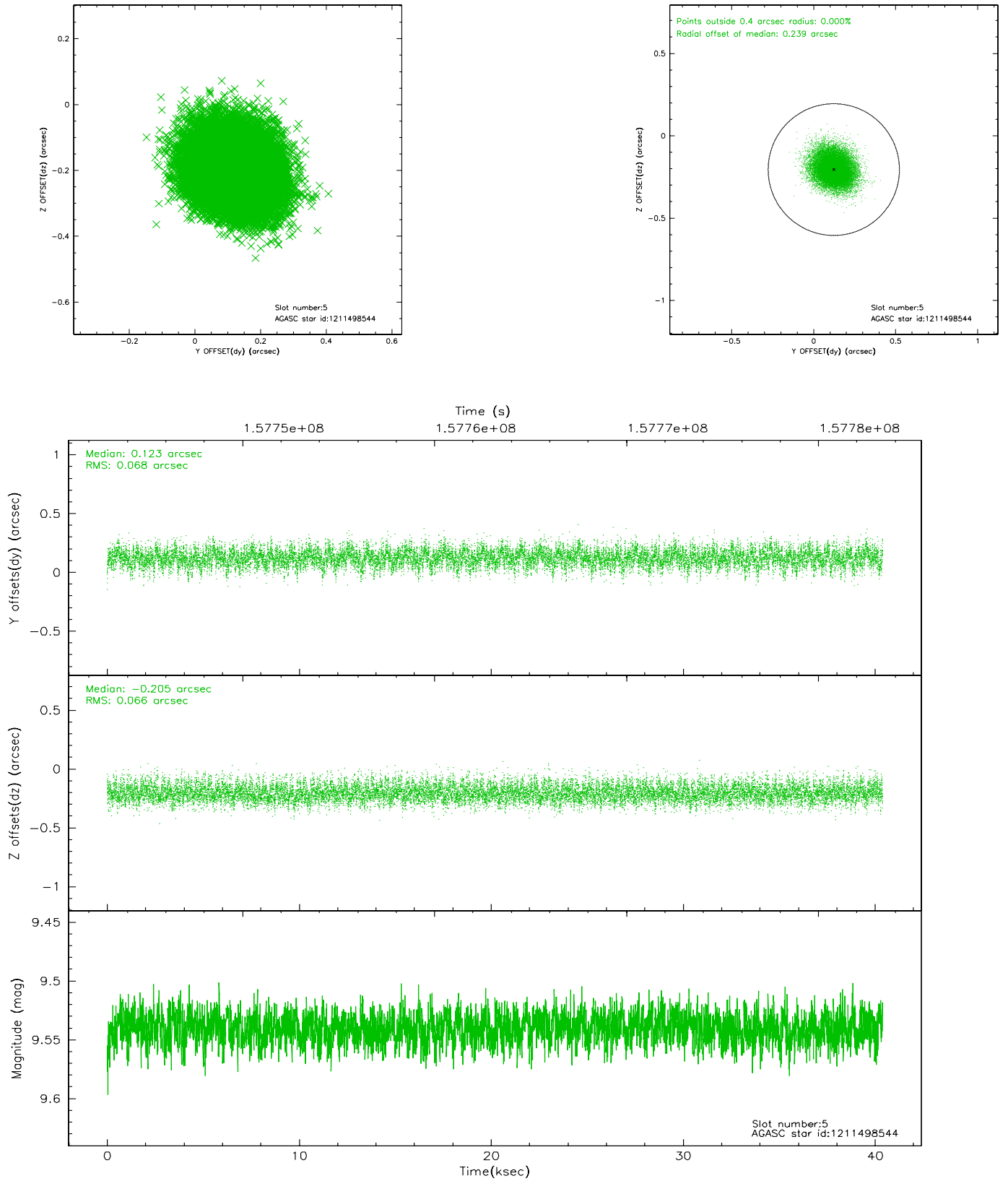
2.4.1 Slot 3



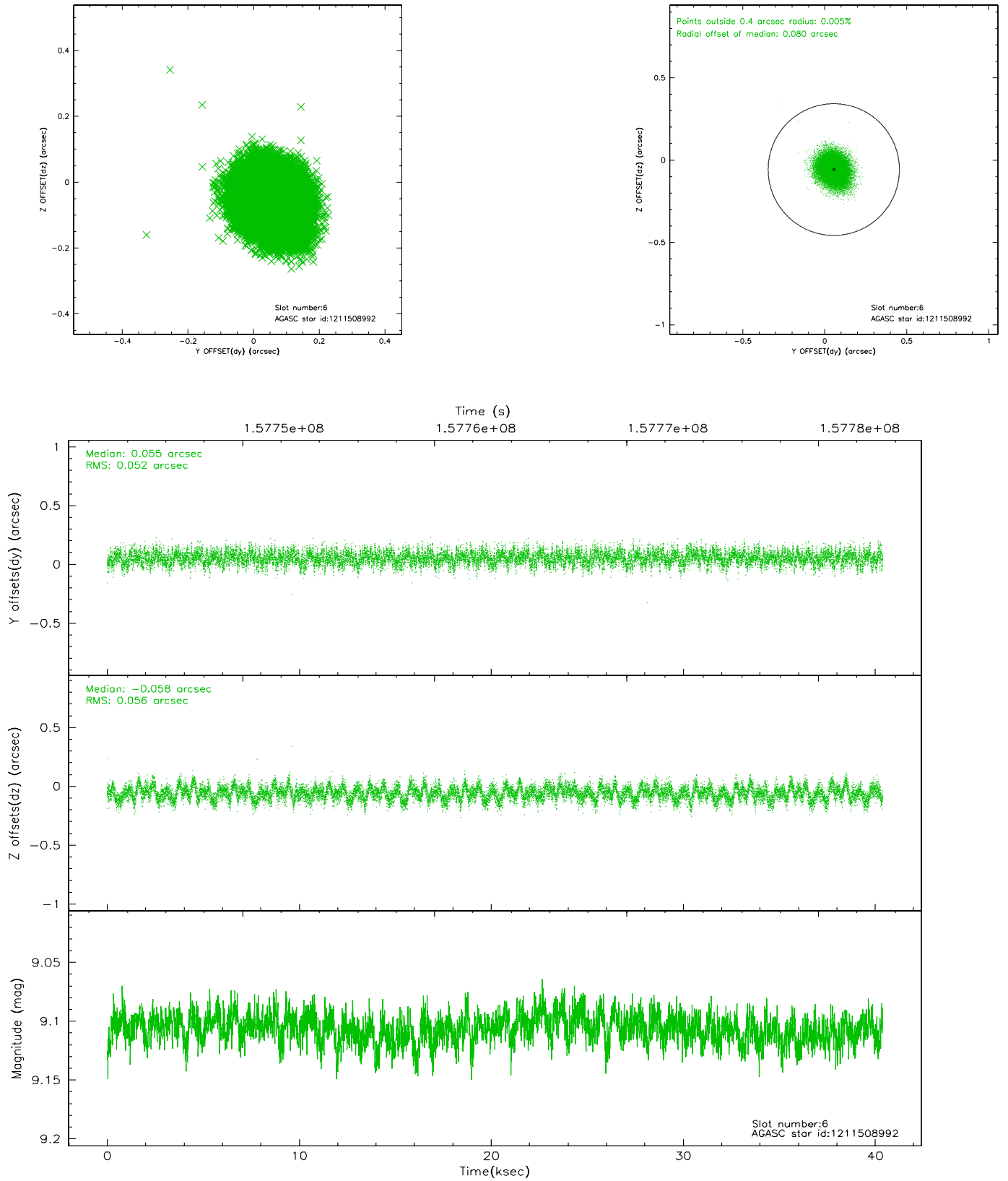
2.4.2 Slot 4



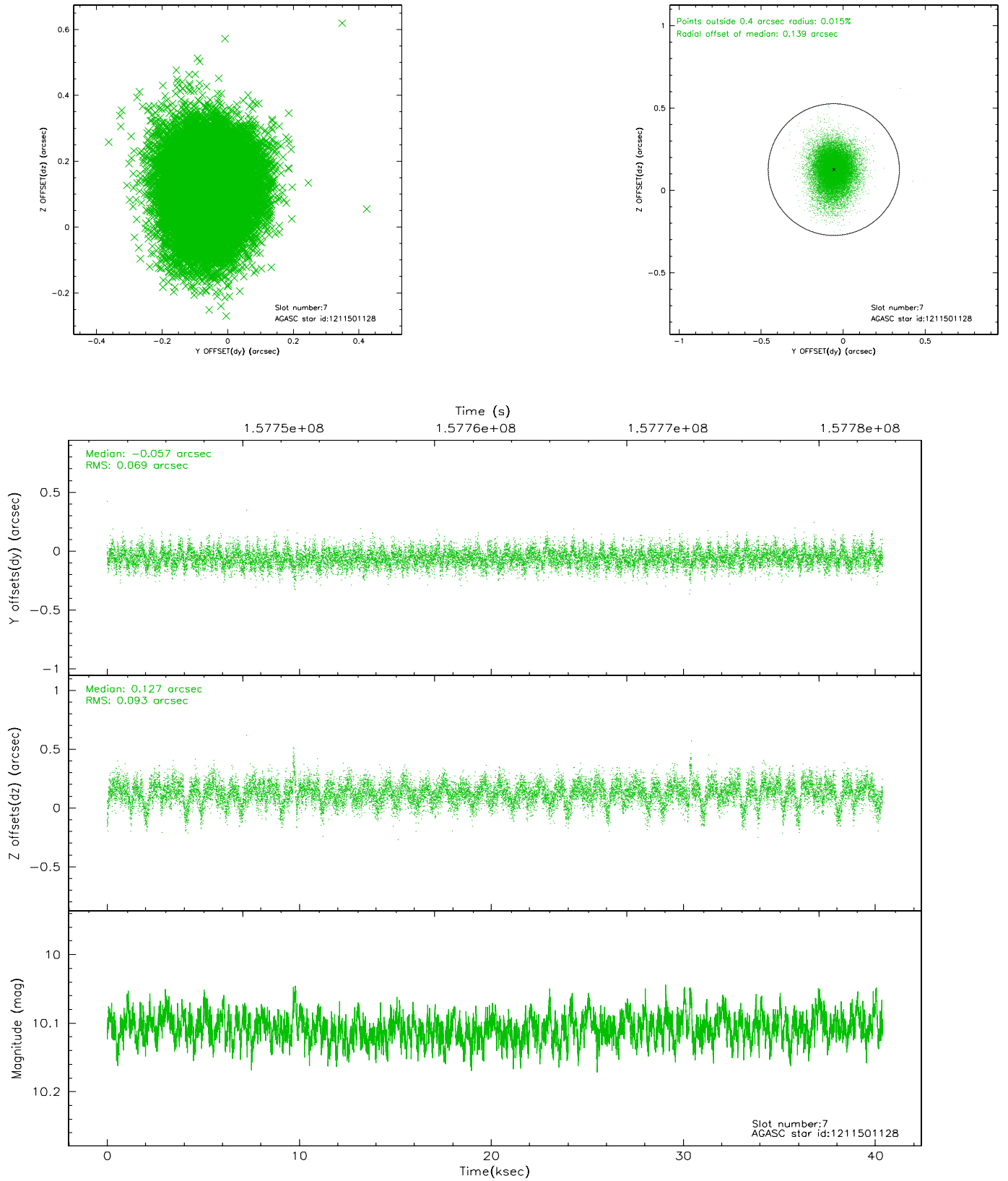
2.4.3 Slot 5



2.4.4 Slot 6

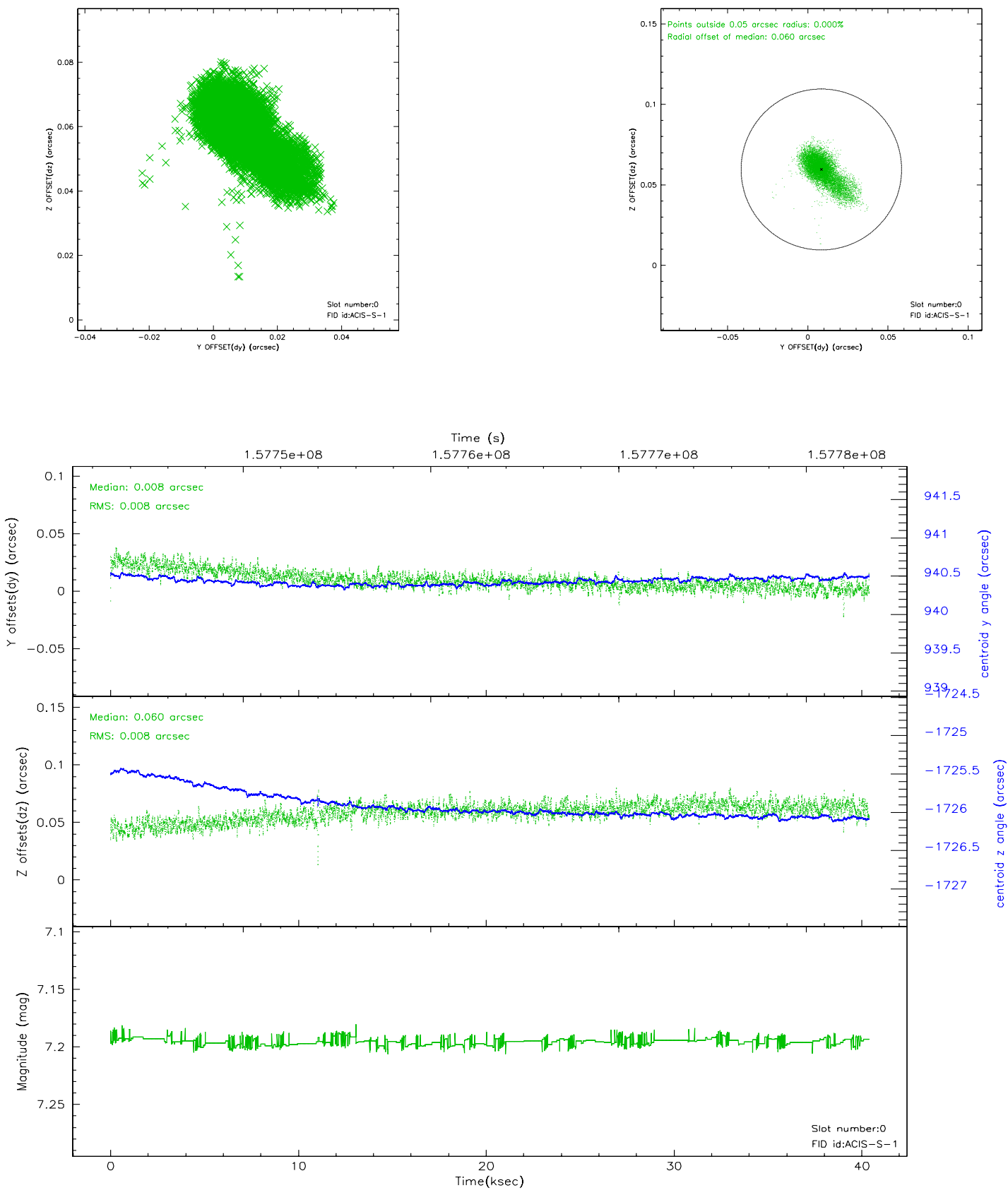


2.4.5 Slot 7

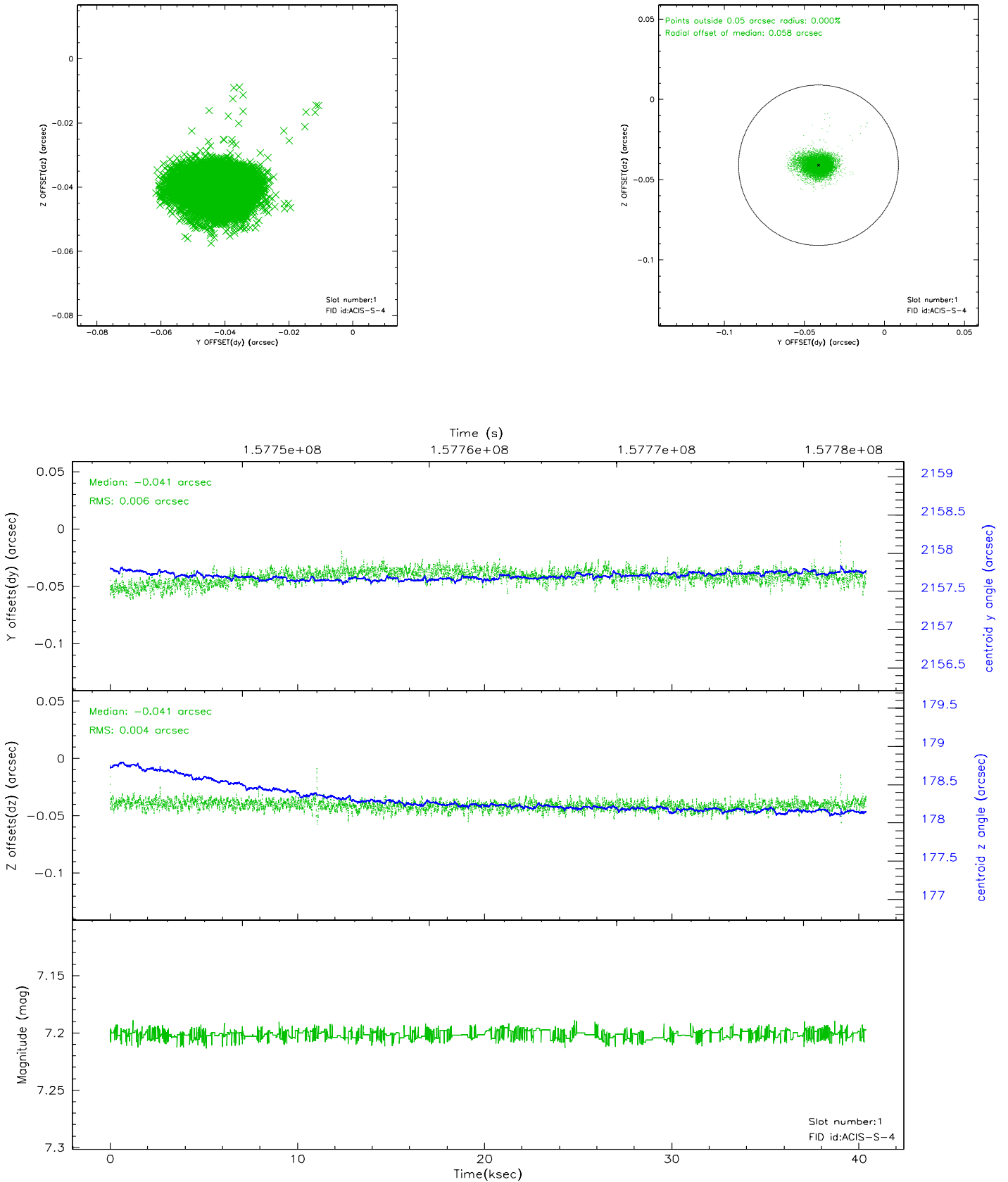


2.5 FID Slots

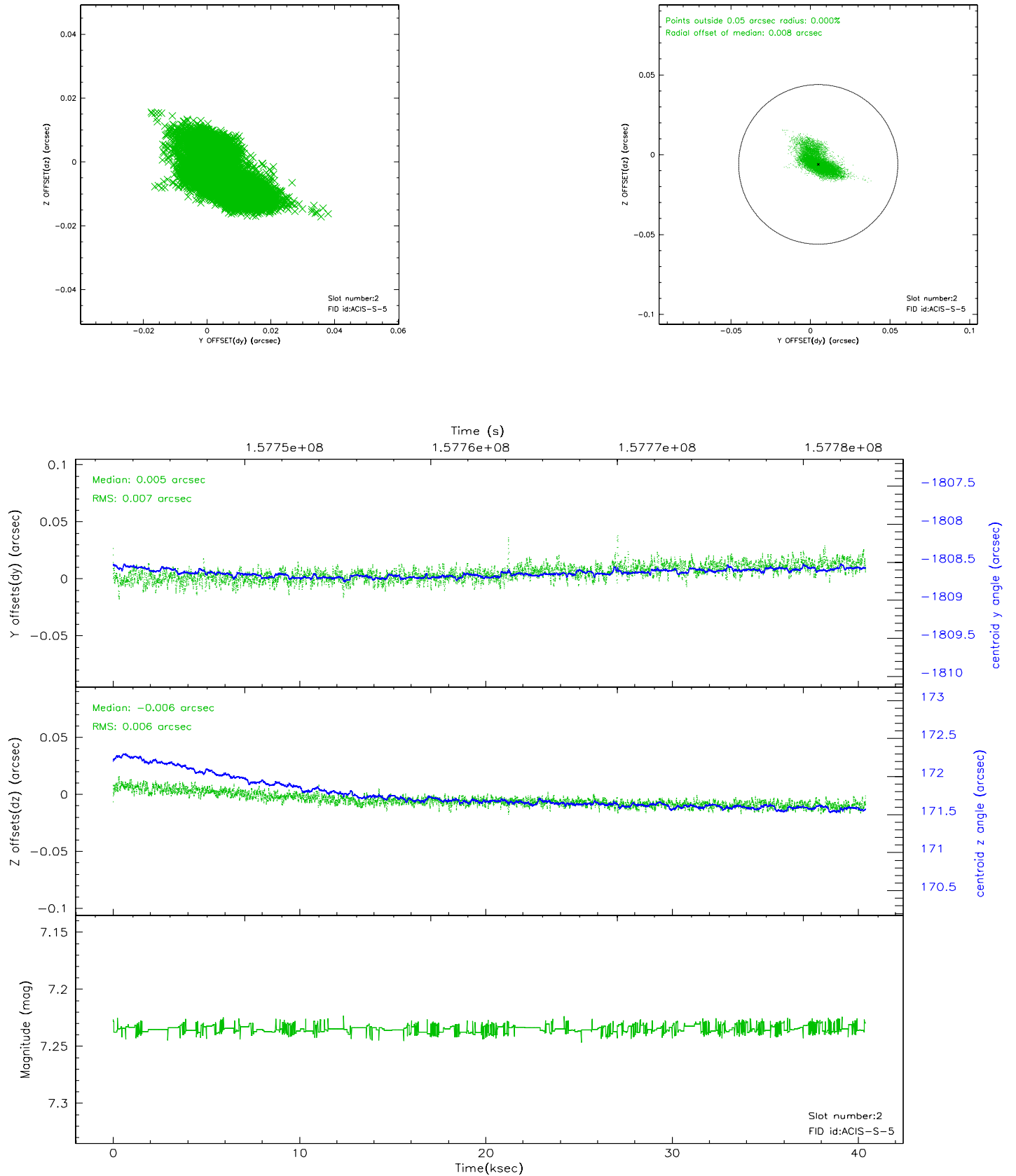
2.5.1 Slot 0



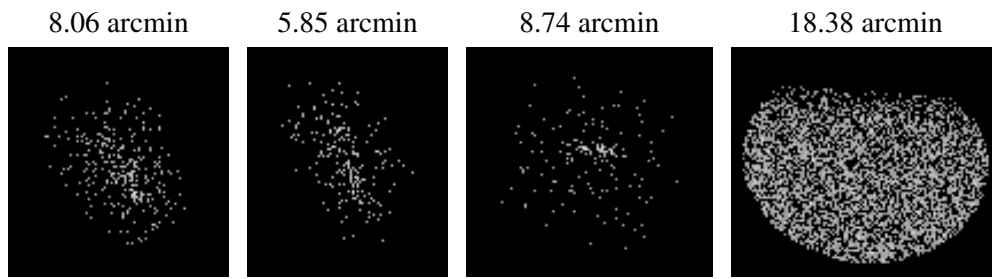
2.5.2 Slot 1



2.5.3 Slot 2



3 Point Sources



A Summary

A.1 Status

V&V Scientist	Jen Lauer
V&V Date (YYYY-MM-DD)	2006.10.16
V&V Edition	1
V&V Disposition and Status	OK
V&V Charge Time	39.964

A.2 Comments