

V&V Reference Report

L2 ASCDS Version : 7.6.9

Observation 2226 - L2 Version 001
Chandra X-Ray Center

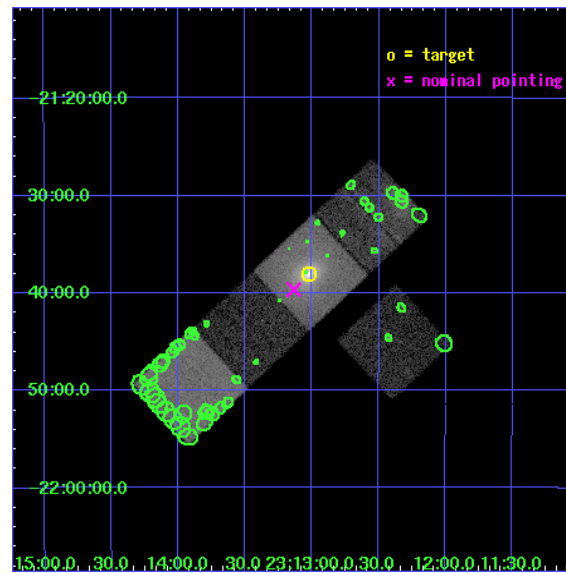
L2 Processing Date : Jan 5 2007

Contents

1	Front	2
2	OBI	3
2.1	OBI	3
2.1.1	Images	3
2.1.2	Bias	3
2.1.3	Parameters	4
2.1.4	Events	4
2.2	Compared Parameters	5
2.3	Aspect	6
2.4	Star Slots	9
2.4.1	Slot 3	9
2.4.2	Slot 4	10
2.4.3	Slot 5	11
2.4.4	Slot 6	12
2.4.5	Slot 7	13
2.5	FID Slots	14
2.5.1	Slot 0	14
2.5.2	Slot 1	15
2.5.3	Slot 2	16
3	Point Sources	17
A	Summary	18
A.1	Status	18
A.2	Comments	18

1 Front

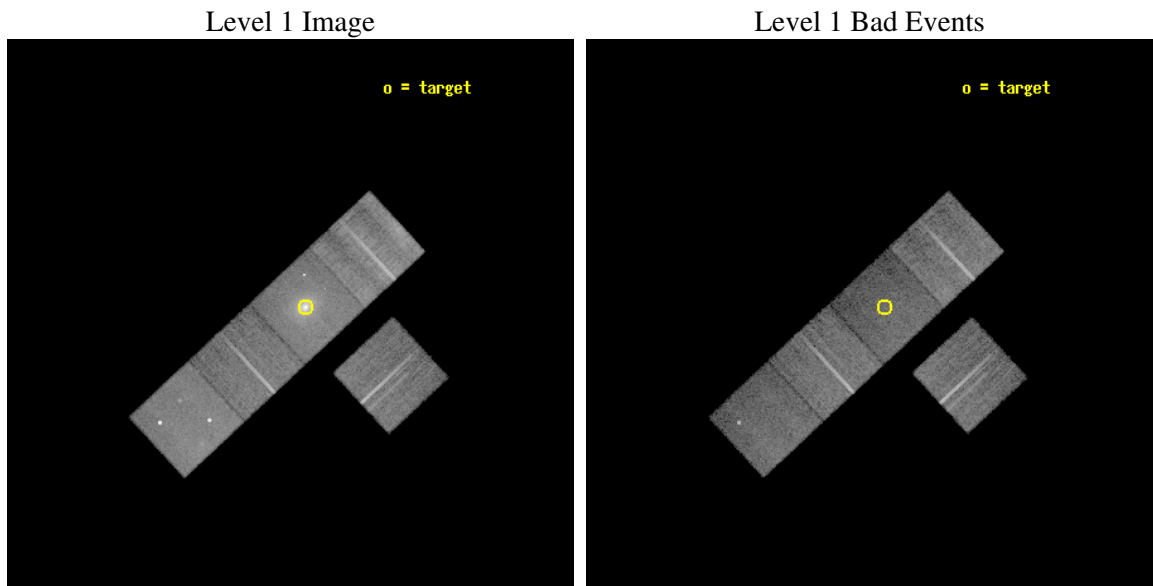
seq_num	800165
obs_id	2226
title	A DIFFERENTIAL X-RAY GUNN-PETERSON TEST USING A GIANT CLUSTER FILAMENT
observer	Dr Maxim Markevitch
object	A2556
dtcycle	0
cycle	P
ra_targ	348.255833
dec_targ	-21.634
ra_nom	348.28398560639
dec_nom	-21.66077158221
roll_nom	317.11014787548
revision	2
ontime	20149.958991006
livetime	19886.684942605
ontime3	20149.959010914
ontime5	20149.958991006
ontime6	20146.817990825
ontime7	20149.958991006
ontime8	20146.818040669
l2events	187578



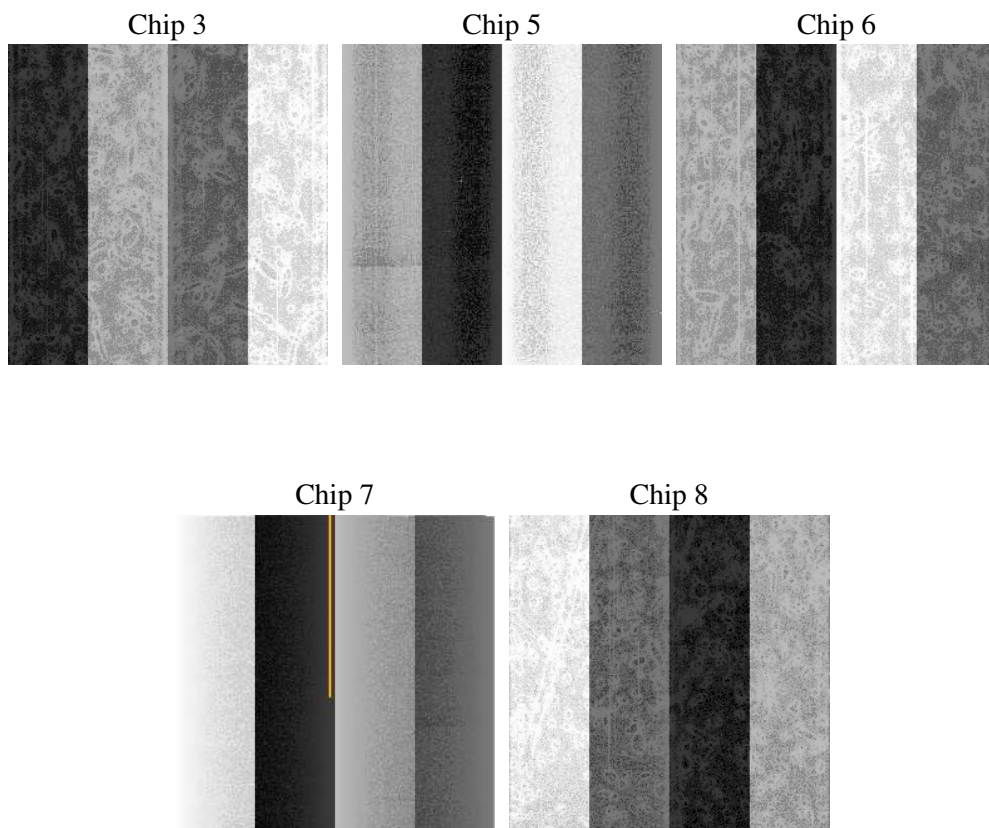
2 OBI

2.1 OBI

2.1.1 Images



2.1.2 Bias



2.1.3 Parameters

obi_num	1
ascdsver	7.6.9
caldbver	3.2.4
date	2007-01-05T10:48:18
revision	2

sched_exp_time	20000.000000
ontime	21204.934111252
ontime3	21204.93413116
ontime5	21204.934111252
ontime6	21201.793111071
ontime7	21204.934111252
ontime8	21201.793160915
l1events	686952

2.1.4 Events

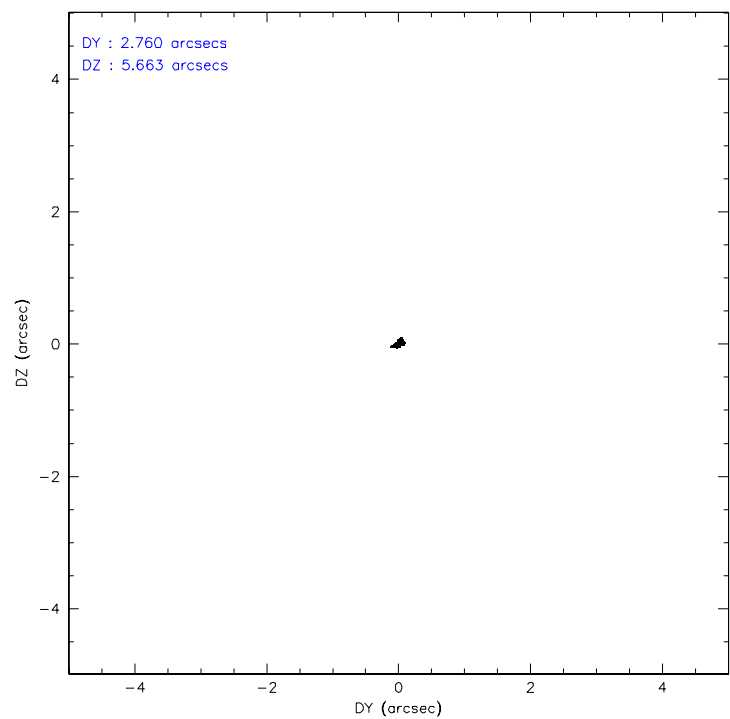
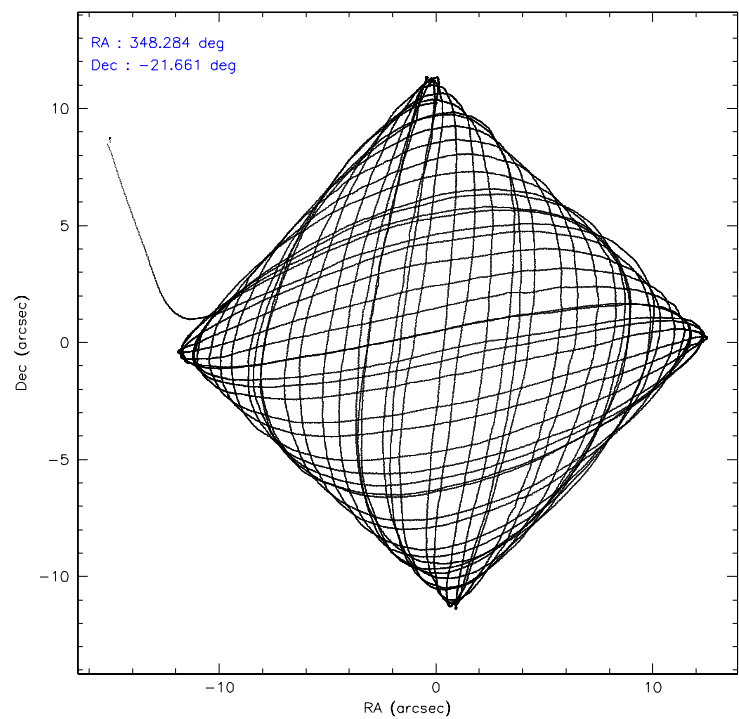
	ccd 3	ccd 5	ccd 6	ccd 7	ccd 8
level 1 events	108572	145046	114560	159909	158865
rejected events	98757	76324	102634	68184	111434
rejected %	90%	52%	89%	42%	70%

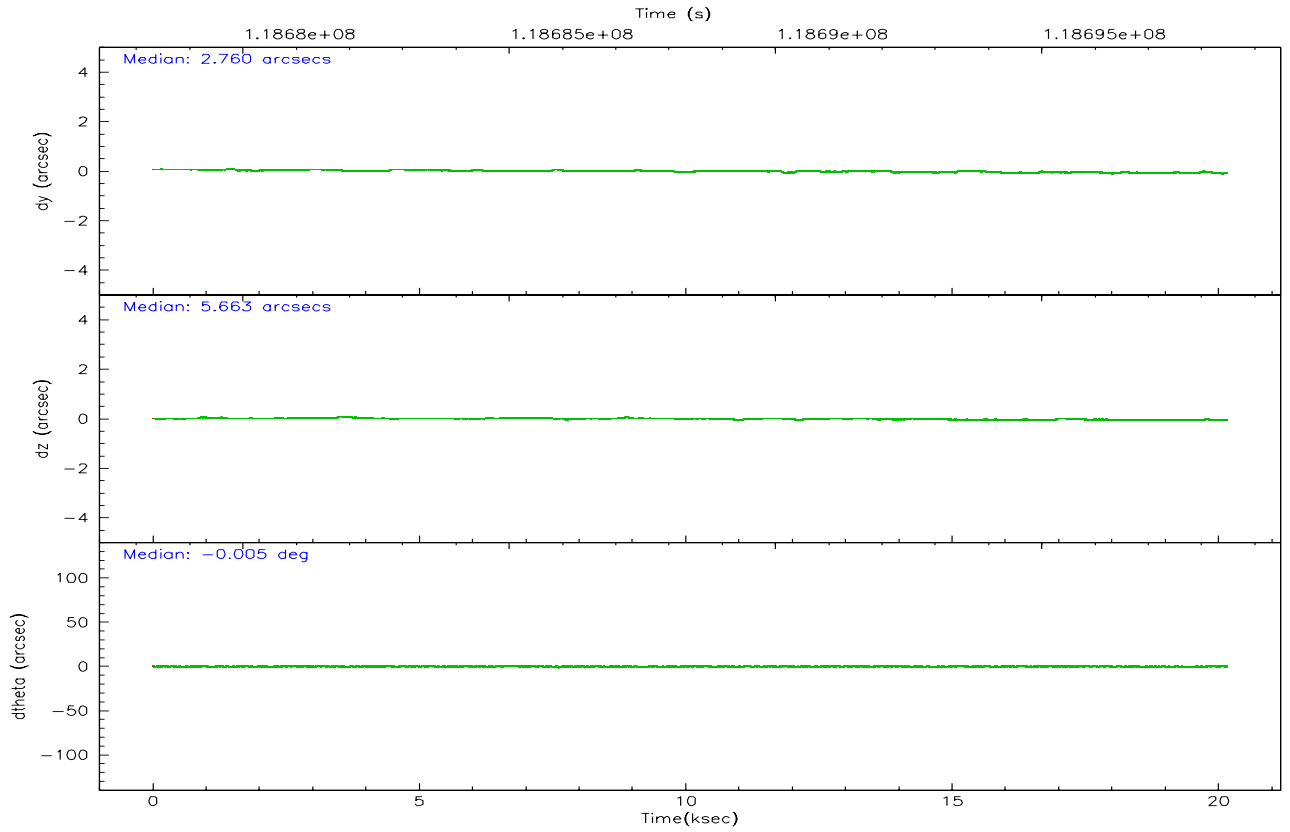
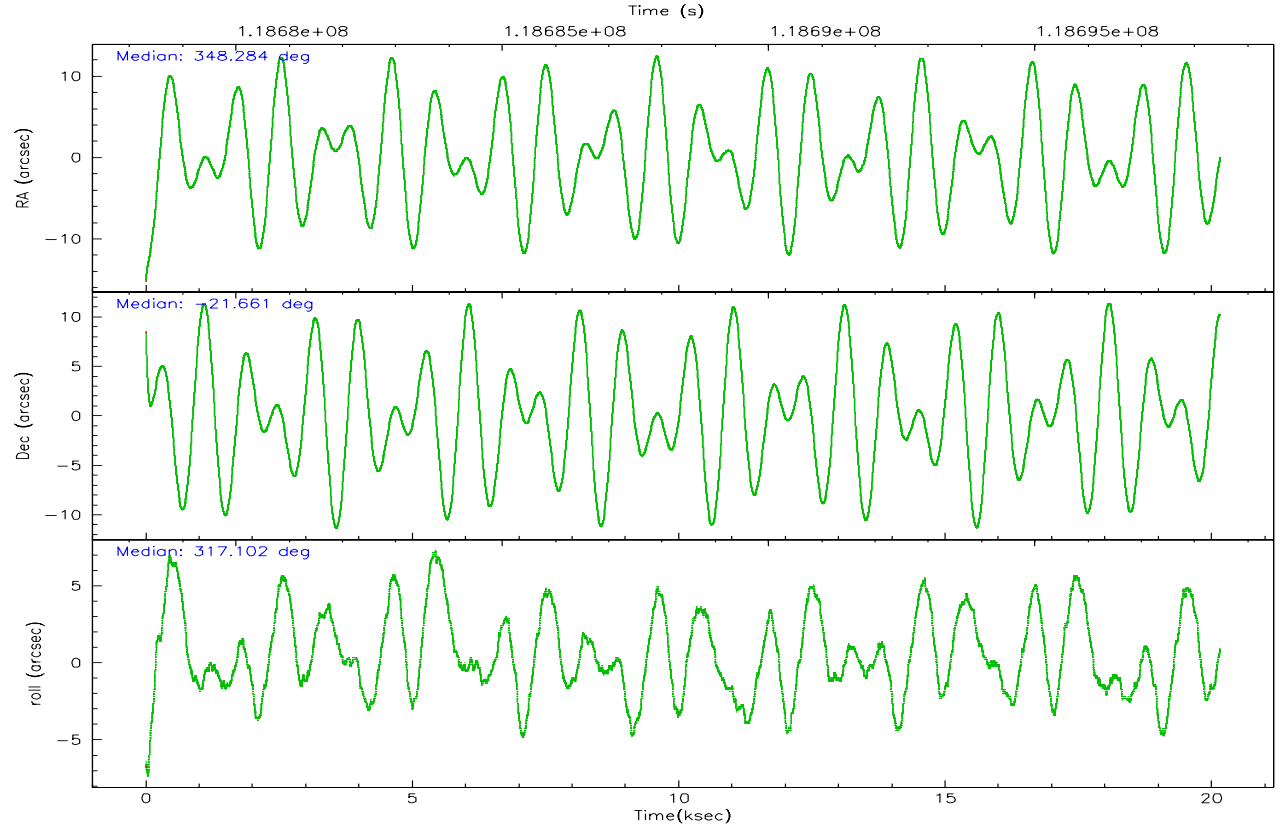
	ccd 3	ccd 5	ccd 6	ccd 7	ccd 8
grade 0 events	3962	10104	5077	17908	18382
	3%	6%	4%	11%	11%
grade 1 events	34	1146	46	71	141
	0%	0%	0%	0%	0%
grade 2 events	2098	21558	2626	24627	8952
	1%	14%	2%	15%	5%
grade 3 events	1140	1970	1289	7912	5750
	1%	1%	1%	4%	3%
grade 4 events	1130	1919	1204	7856	5236
	1%	1%	1%	4%	3%
grade 5 events	3540	7283	4008	9108	5687
	3%	5%	3%	5%	3%
grade 6 events	1996	36780	2404	36202	11469
	1%	25%	2%	22%	7%
grade 7 events	94672	64286	97906	56225	103248
	87%	44%	85%	35%	64%

2.2 Compared Parameters

Parameter	Planned	Actual	Parameter	Planned	Actual
Instrument	ACIS	ACIS	Obspar format version number	6	6
Detector	ACIS-35678	ACIS-35678	Obspar file type	PREDICTED	ACTUAL
Grating	NONE	NONE	Obspar update status	NONE	UPDATED
Data mode	VFAINT	VFAINT	Number of optional ACIS chips dropped	0	0
Observation mode	POINTING	POINTING	On-chip summing requested	N	N
Pointing RA	348.255329	348.2839856063864	Subarray requested	NONE	NONE
Pointing Dec	-21.655007	-21.66077158221035	Alternating exposures requested	N	N
Pointing Roll	316.942946	317.1101478754754	Primary exposure time	0.000000	3.1
SIM focus pos (mm)	-0.684267	-0.6828225247311905			
SIM defocus (mm)	0	0.001444936568705701			
SIM translation stage pos (mm)	-190.132523	-190.1425803651734			
SIM translation stage offset (mm)	0	0.01005778216563158			
Observation start time	118678477.184000	118676959.5979			
Observation start date	2001-10-05T14:13:33	2001-10-05T13:49:19			
Observation end time	118698477.184000	118699310.74878			
Observation end date	2001-10-05T19:46:53	2001-10-05T20:01:50			
Read mode	TIMED	TIMED			

2.3 Aspect



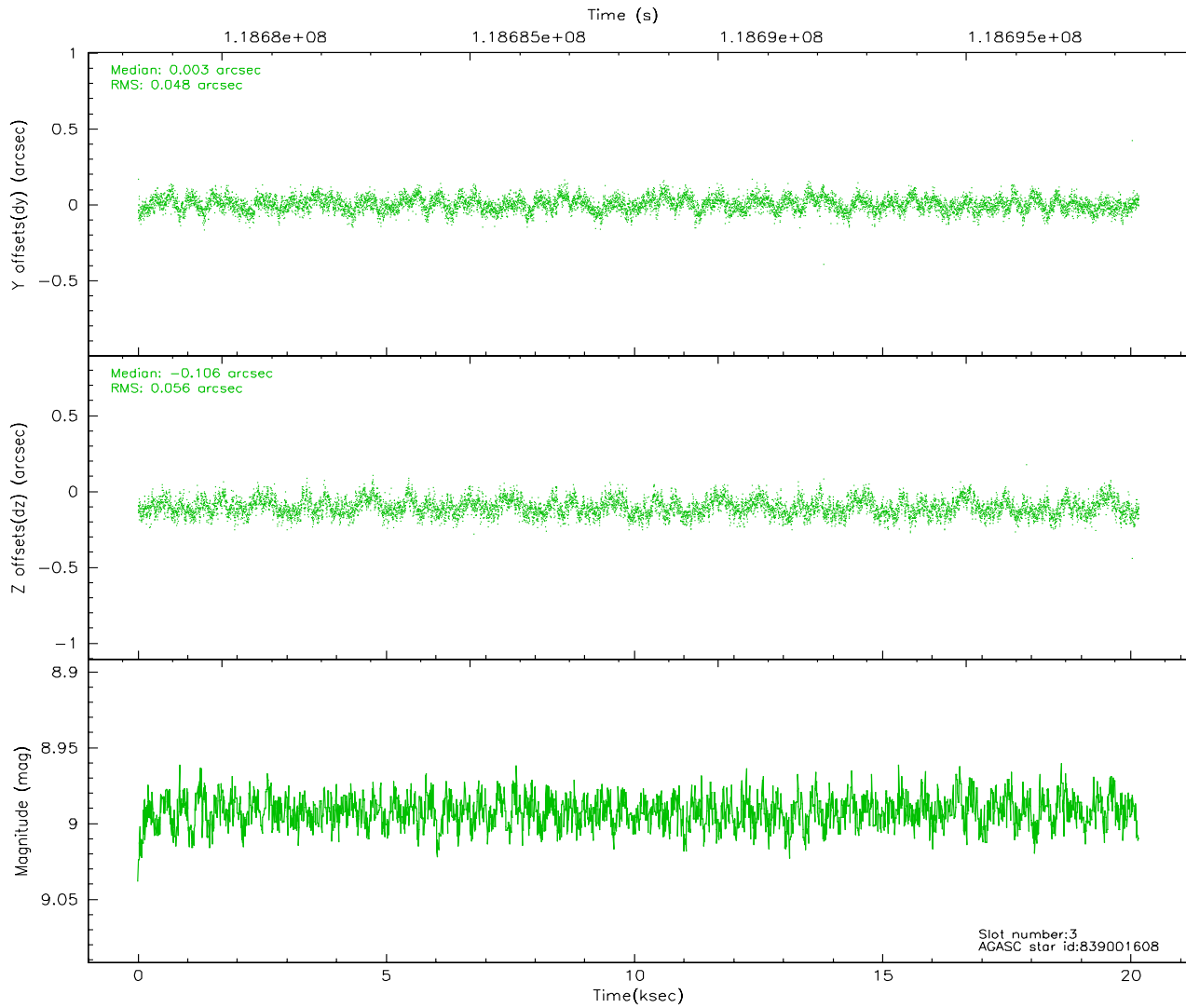
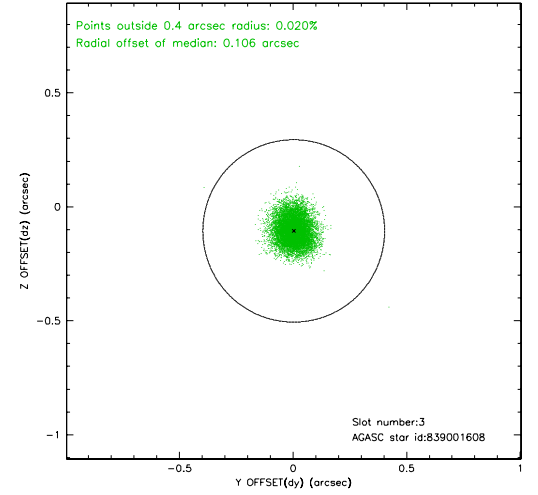
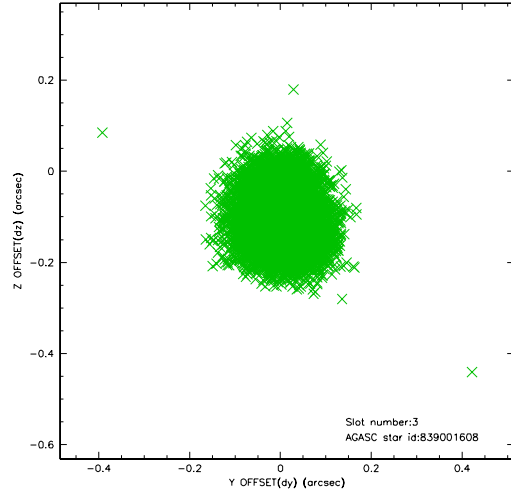


Slot Statistics

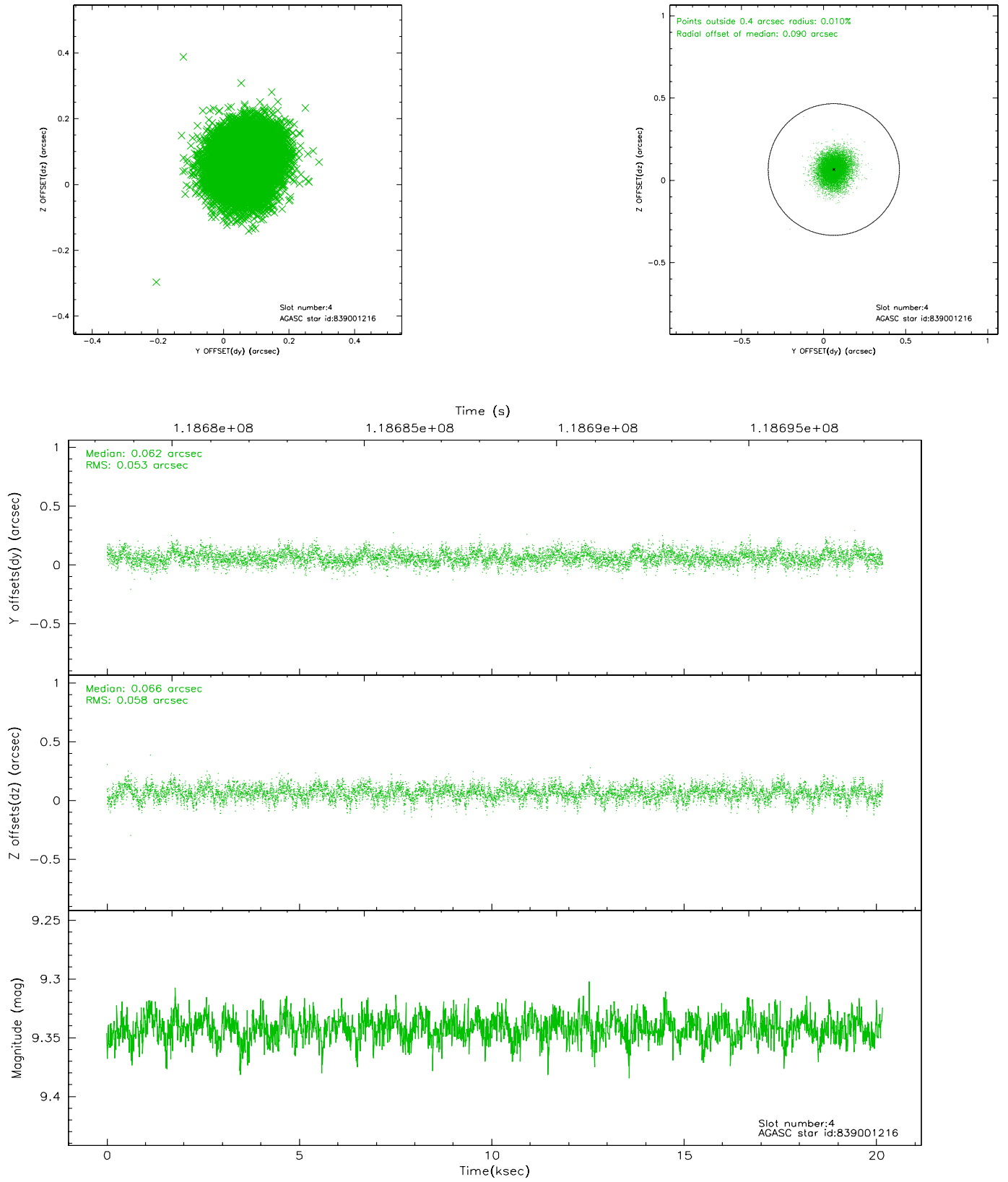
slot	status	id	mag	n_pts	med_dy	med_dz	dr1	dr2	ra	dec	mean_y	mean_z
0	FID	ACIS-S-2	7.12	4915	-0.023	0.032	0.007	0.011	0.000000	0.000000	-755.37	-1726.73
1	FID	ACIS-S-4	7.21	4916	-0.067	0.003	0.005	0.009	0.000000	0.000000	2157.73	181.61
2	FID	ACIS-S-5	7.24	4915	0.059	-0.025	0.007	0.011	0.000000	0.000000	-1807.94	175.36
3	GUIDE	839001608	8.99	9831	0.003	-0.106	0.079	0.126	347.928467	-21.735788	-599.11	-959.73
4	GUIDE	839001216	9.34	9831	0.062	0.066	0.083	0.135	348.909910	-21.852423	2086.52	970.72
5	GUIDE	838999584	9.41	9832	-0.033	-0.002	0.081	0.132	347.735138	-21.602198	-1399.62	-1052.03
6	GUIDE	838994864	9.25	9833	0.007	0.097	0.129	0.198	348.913779	-21.325499	806.40	2371.03
7	GUIDE	839000400	9.73	9829	-0.048	-0.047	0.109	0.176	347.952883	-22.218103	648.60	-2169.77

2.4 Star Slots

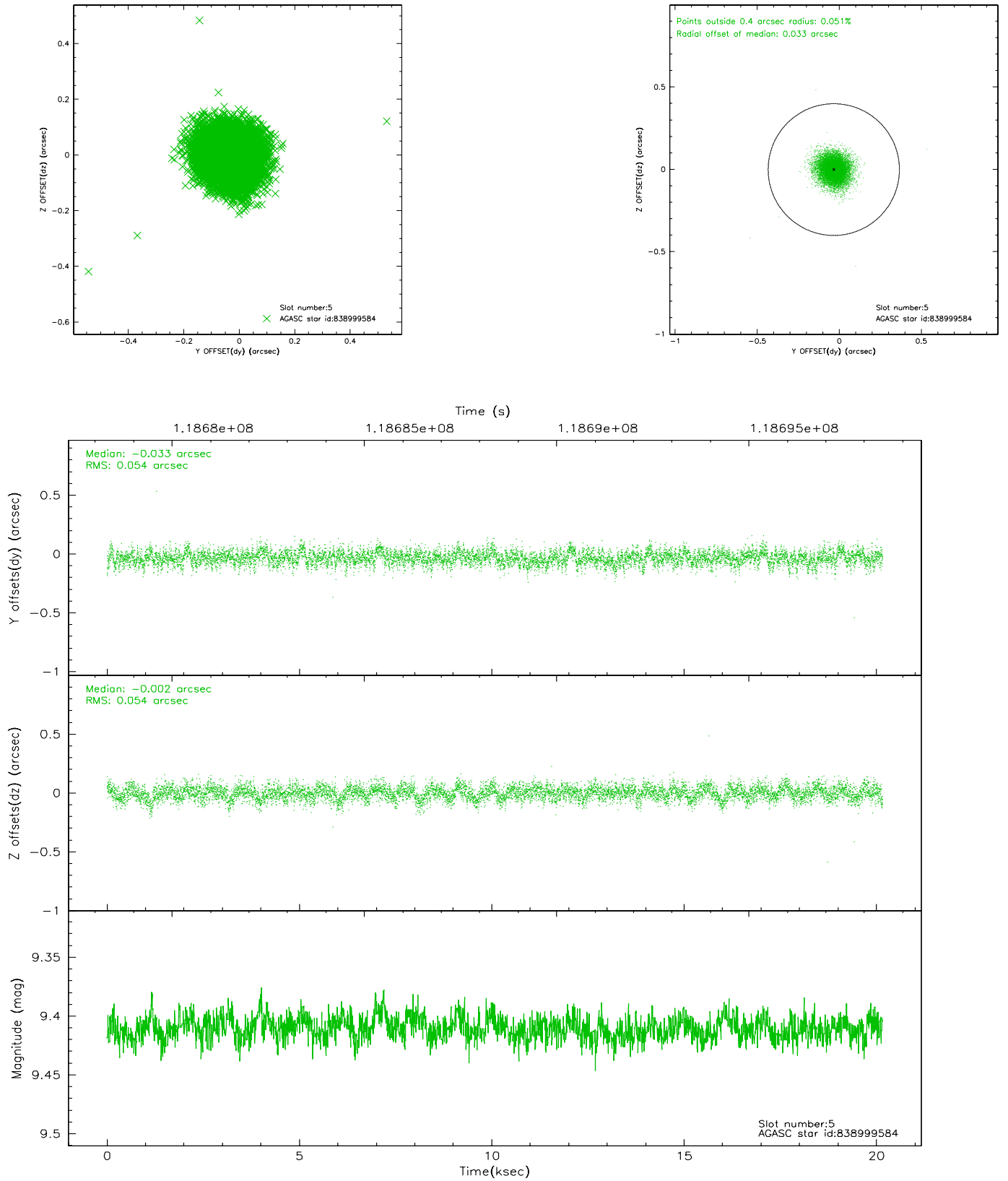
2.4.1 Slot 3



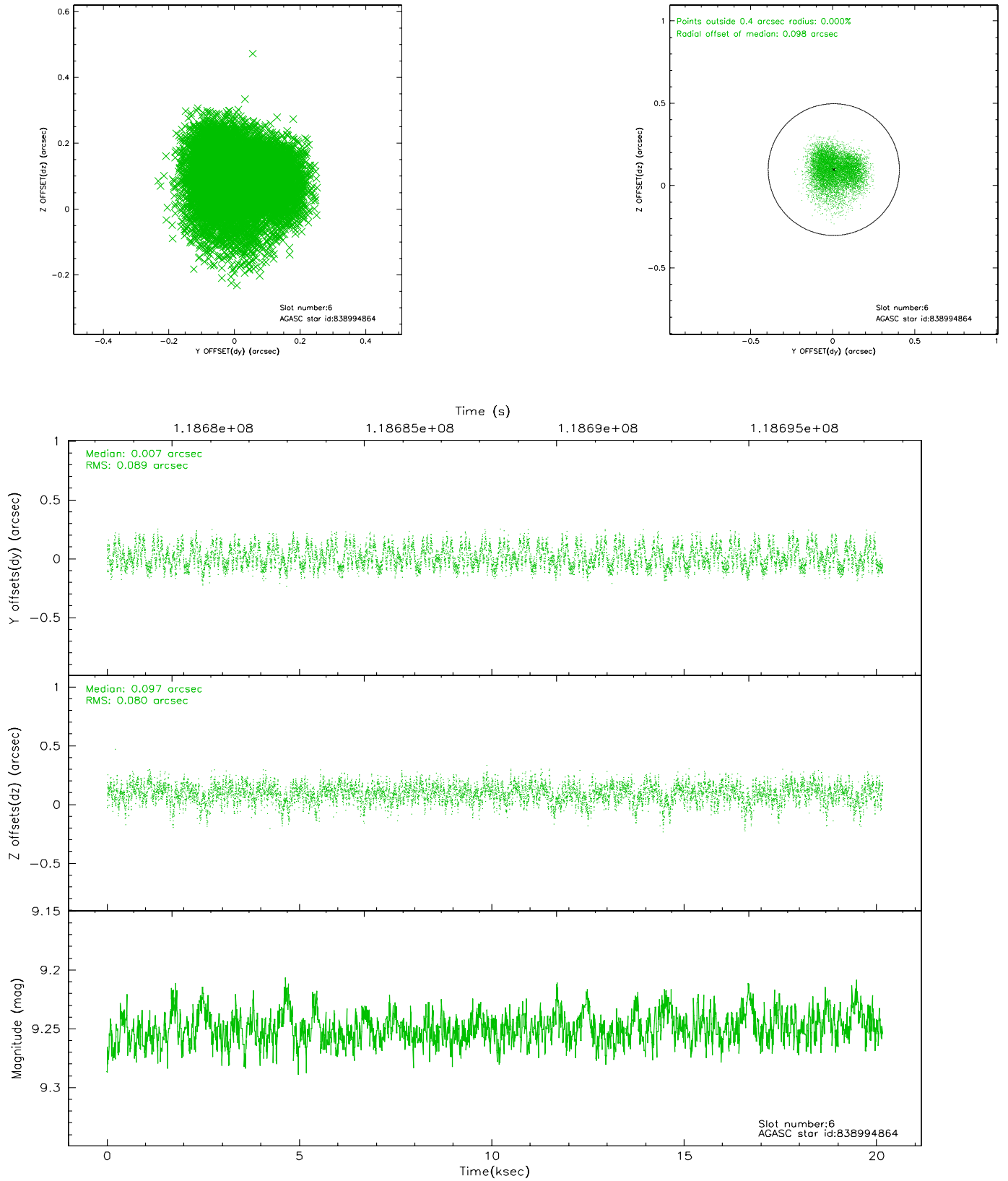
2.4.2 Slot 4



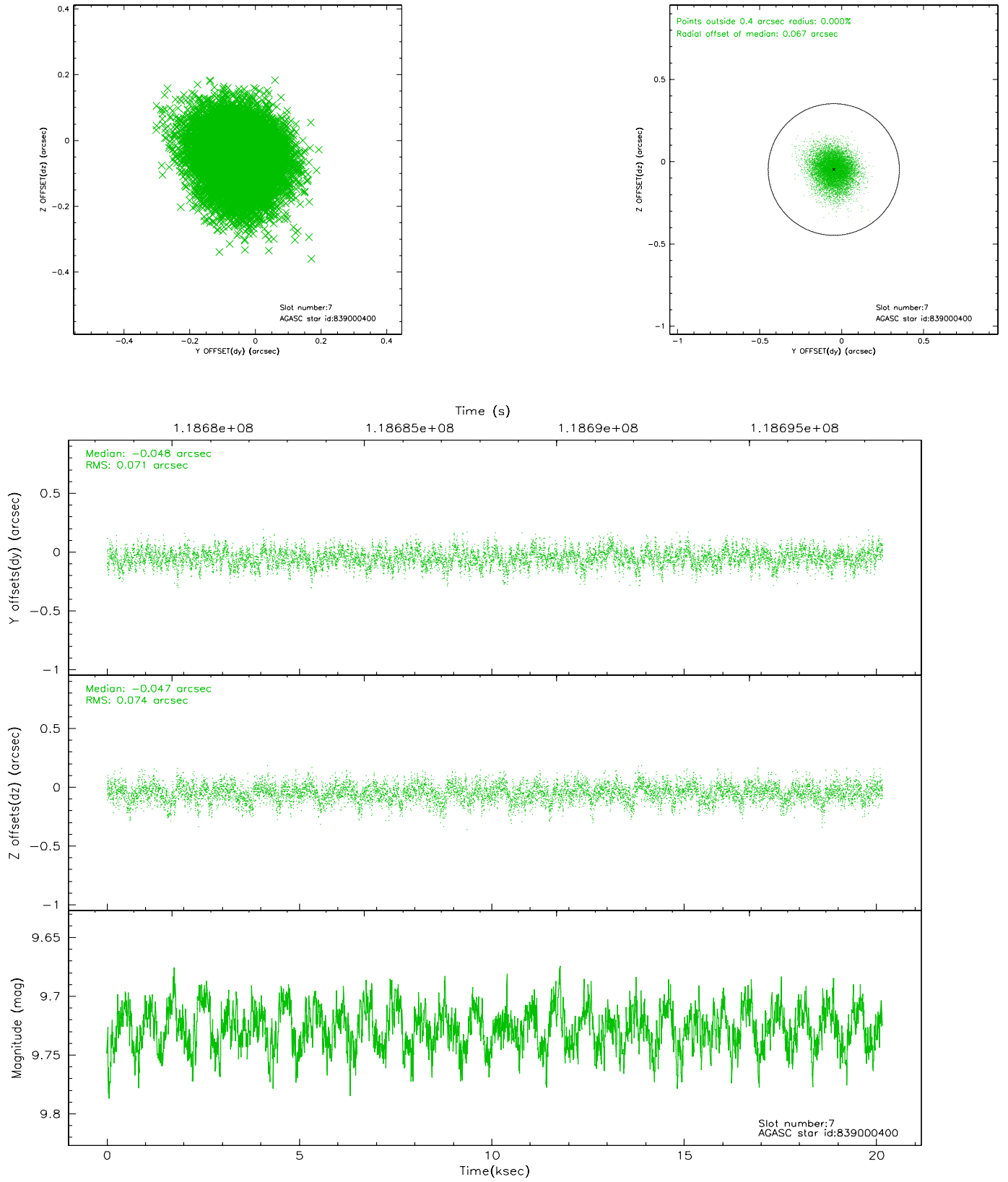
2.4.3 Slot 5



2.4.4 Slot 6

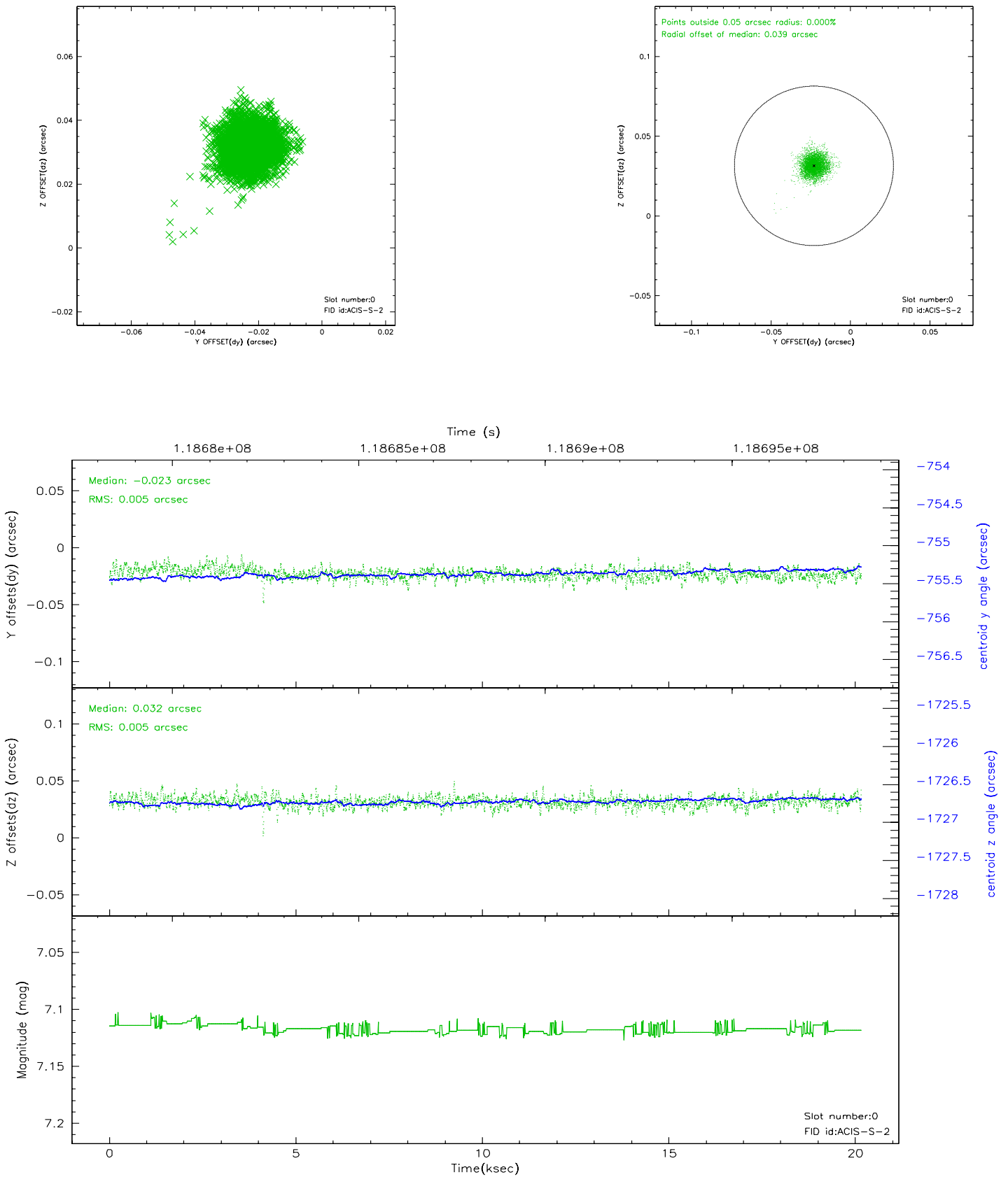


2.4.5 Slot 7

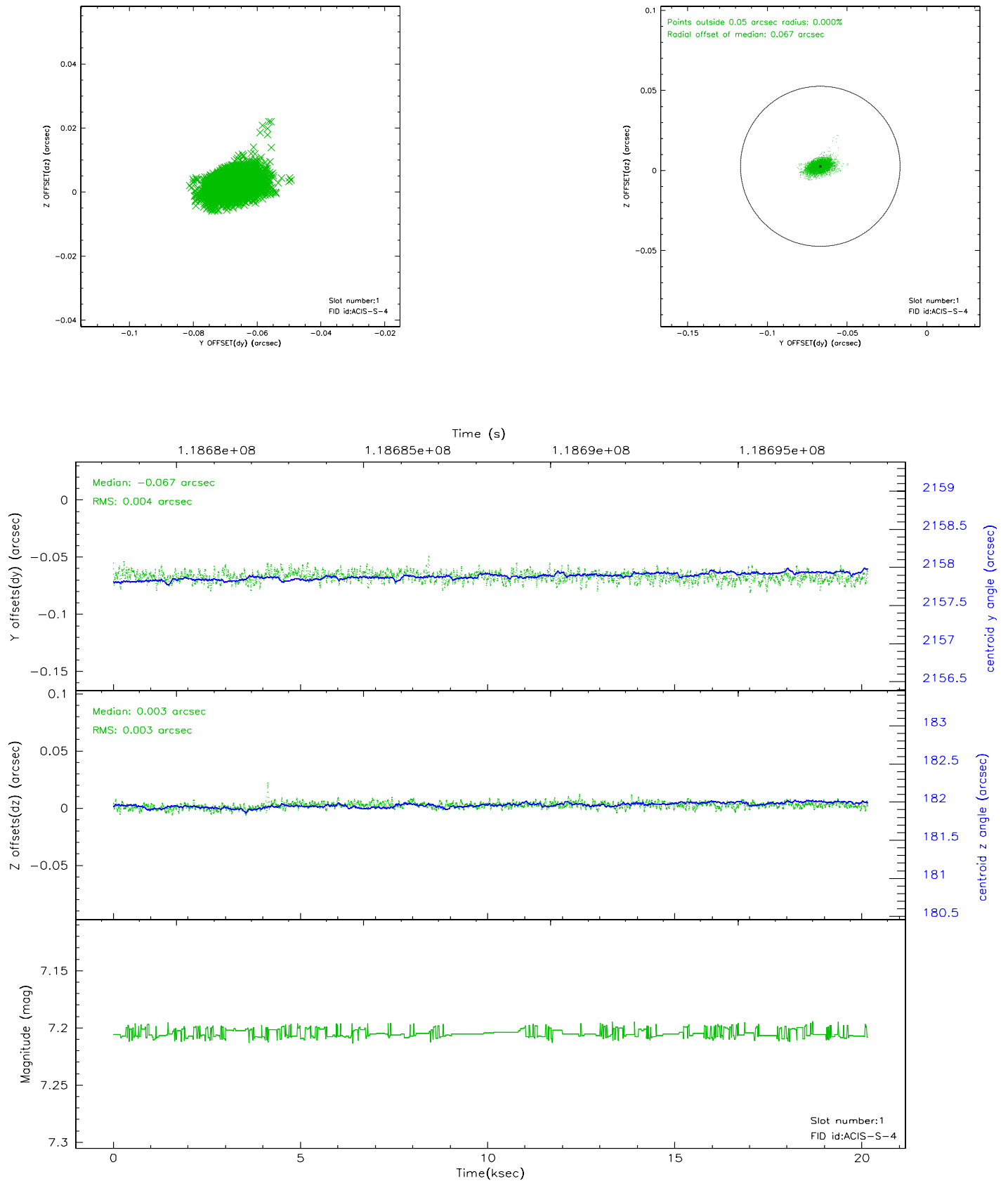


2.5 FID Slots

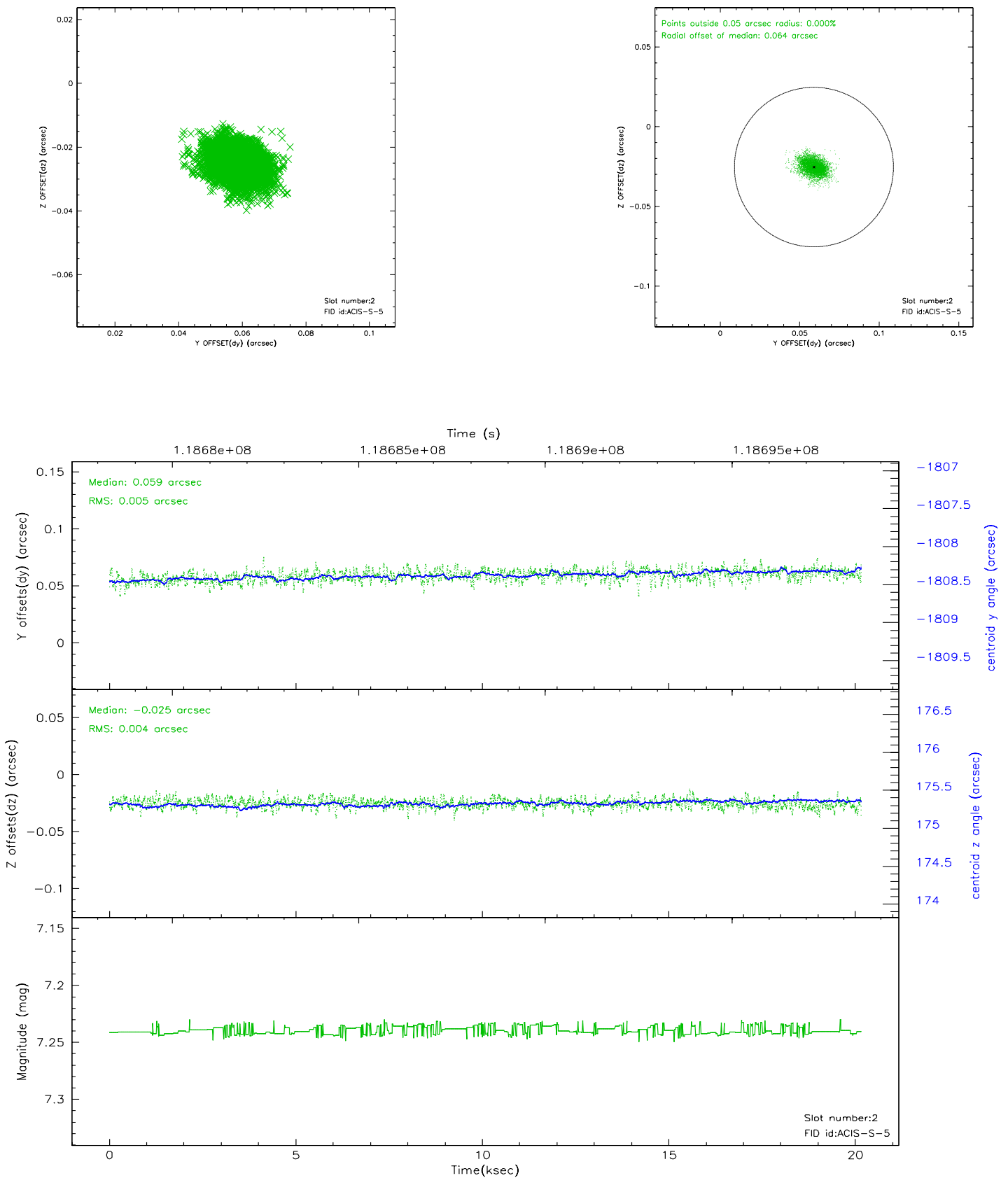
2.5.1 Slot 0



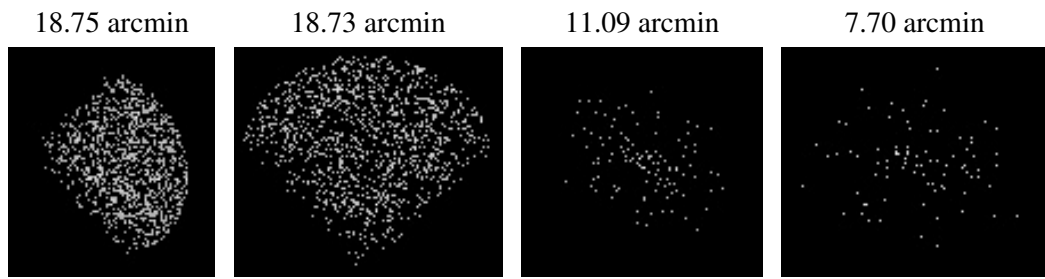
2.5.2 Slot 1



2.5.3 Slot 2



3 Point Sources



A Summary

A.1 Status

V&V Scientist	Beth Sundheim
V&V Date (YYYY-MM-DD)	2007.01.05
V&V Edition	1
V&V Disposition and Status	OK
V&V Charge Time	20.149

A.2 Comments