

V&V Reference Report

L2 ASCDS Version : 8.4.5

Observation 1736 - L2 Version 7
Chandra X-Ray Center

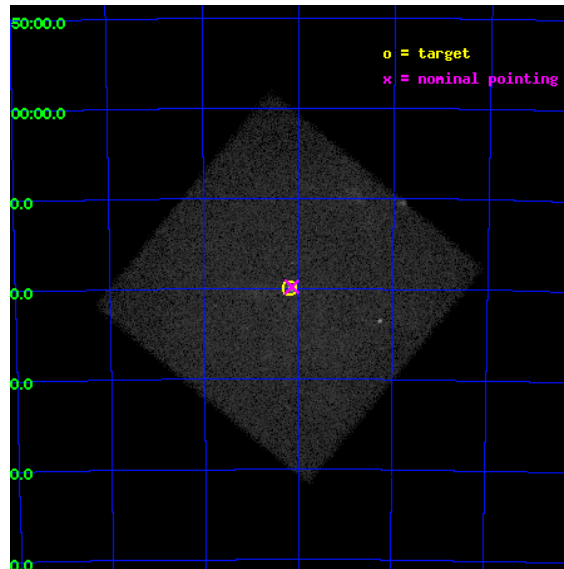
L2 Processing Date : Aug 29 2012

Contents

1	Front	2
2	OBI	3
2.1	OBI	3
2.1.1	Images	3
2.1.2	Parameters	4
2.1.3	Events	4
2.2	Compared Parameters	5
2.3	Aspect	6
2.4	Star Slots	9
2.4.1	Slot 3	9
2.4.2	Slot 4	10
2.4.3	Slot 5	11
2.4.4	Slot 6	12
2.4.5	Slot 7	13
2.5	FID Slots	14
2.5.1	Slot 0	14
2.5.2	Slot 1	15
2.5.3	Slot 2	16
A	Summary	17
A.1	Status	17
A.2	Comments	17

1 Front

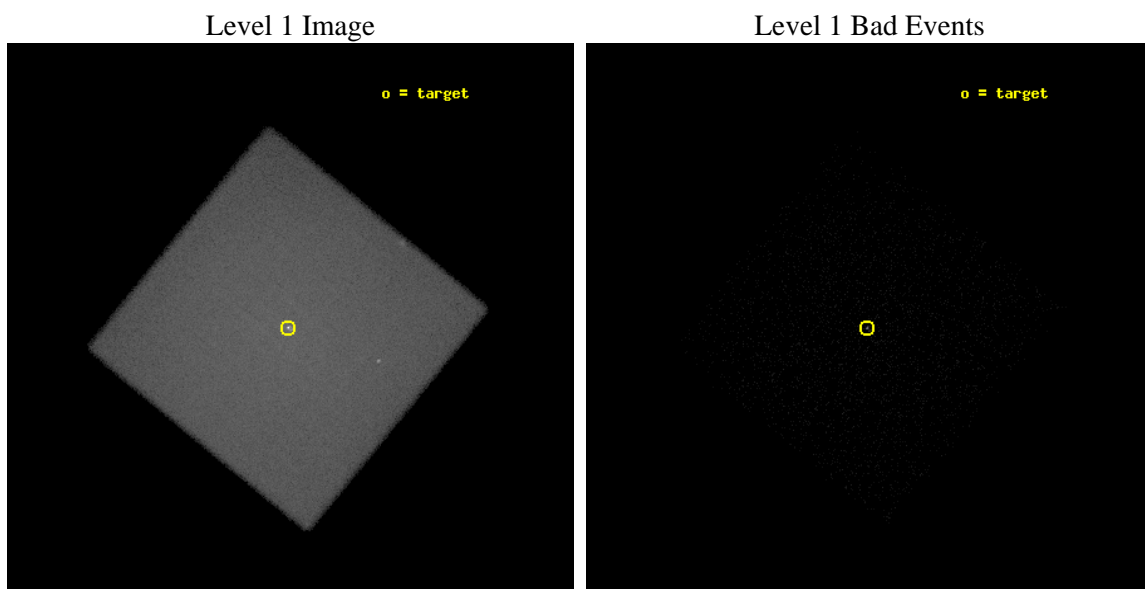
seq_num	590185	Sequence number
obs_id	1736	Observation id
title	VERIFICATION OF AXAF TIMING CAPABILITY	Proposal title
observer	Dr. CXC Calibration	Principal investigator
object	PSR B0540-69	Source name
ra_targ	85.04625	Observer's specified target RA [deg]
dec_targ	-69.332	Observer's specified target Dec [deg]
ra_nom	85.034998439467	Nominal RA [deg]
dec_nom	-69.329847727519	Nominal Dec [deg]
roll_nom	174.45499517697	Nominal Roll [deg]
revision	7	Processing version of data
ontime	10029.881619766	[s]
livetime	9951.5421678322	Ontime multiplied by DTCOR
l2events	159297	Number of level 2 events



2 OBI

2.1 OBI

2.1.1 Images



2.1.2 Parameters

obi_num	0	Obi number	sched_exp_time	9885.000000	[s] Scheduled observation exposure time
ascdsver	8.4.5	Processing system revision	ontime	10029.881619766	[s]
caldbver	4.5.1.1	 	l1events	1189638	Number of level 1 events
date	2012-08-29T07:52:30	Date and time of file creation			
revision	7	Processing version of data			

2.1.3 Events

Level 1 Events

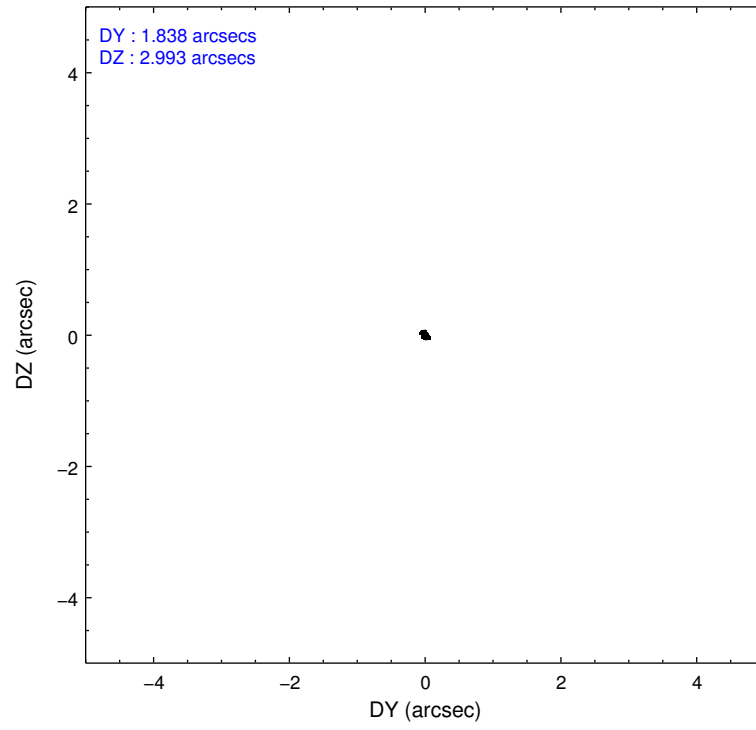
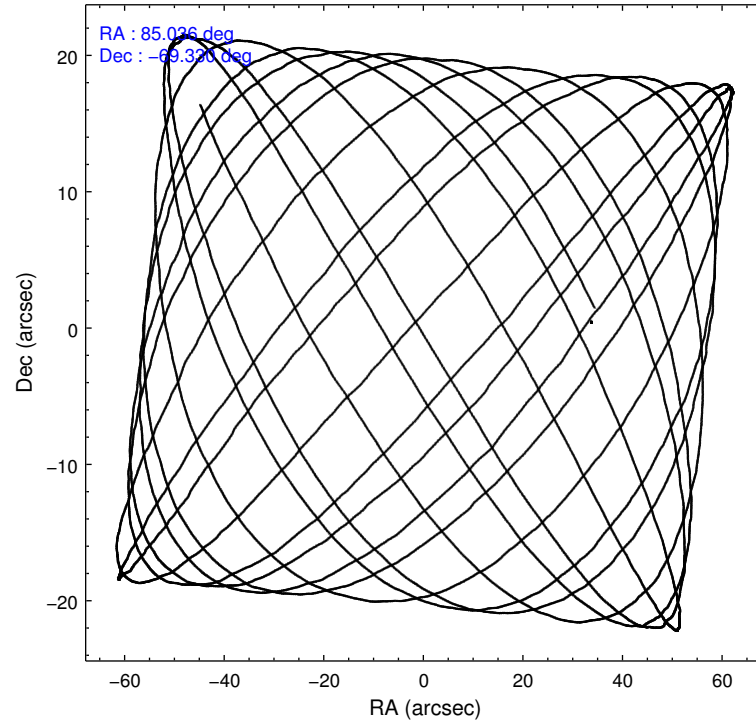
	segment 0
level 1 events	1189638
rejected events	47426
rejected %	3%

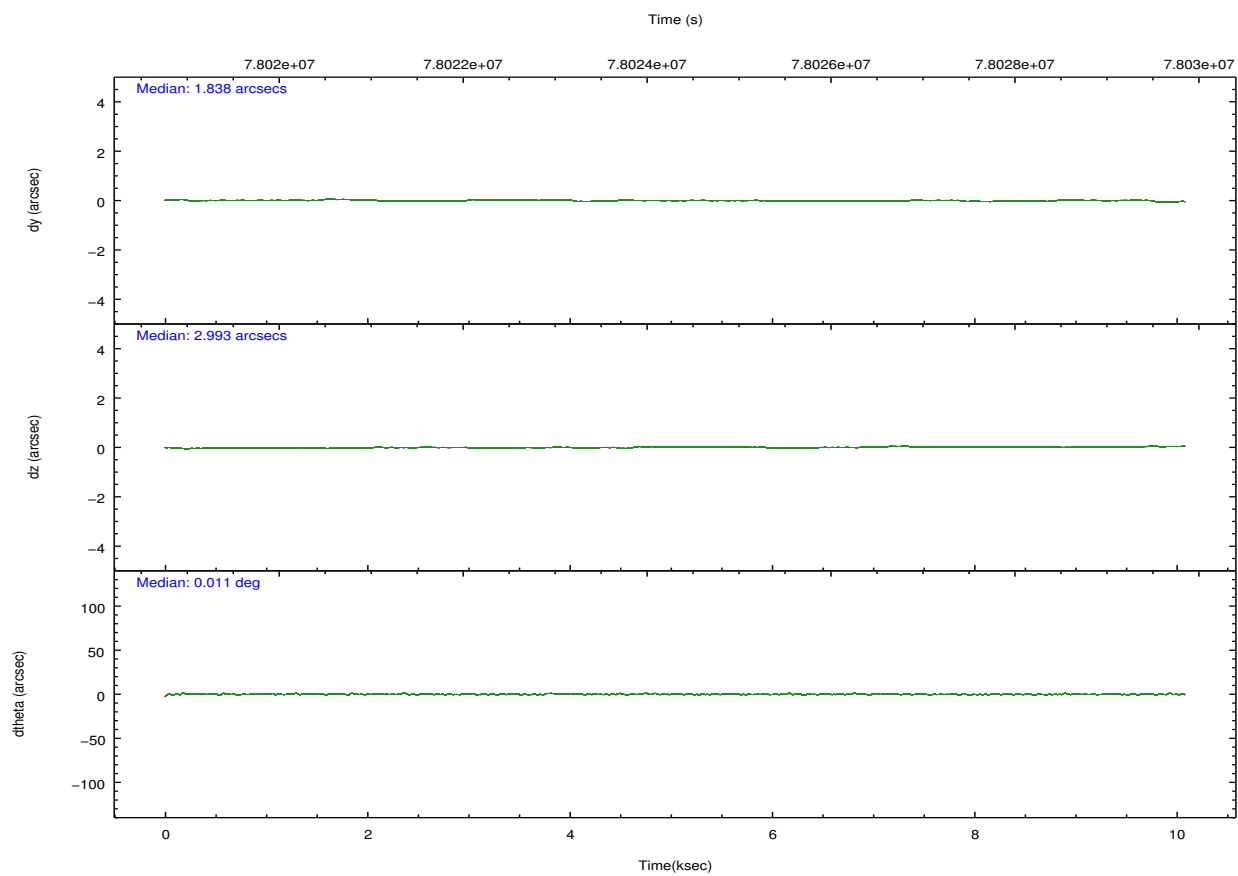
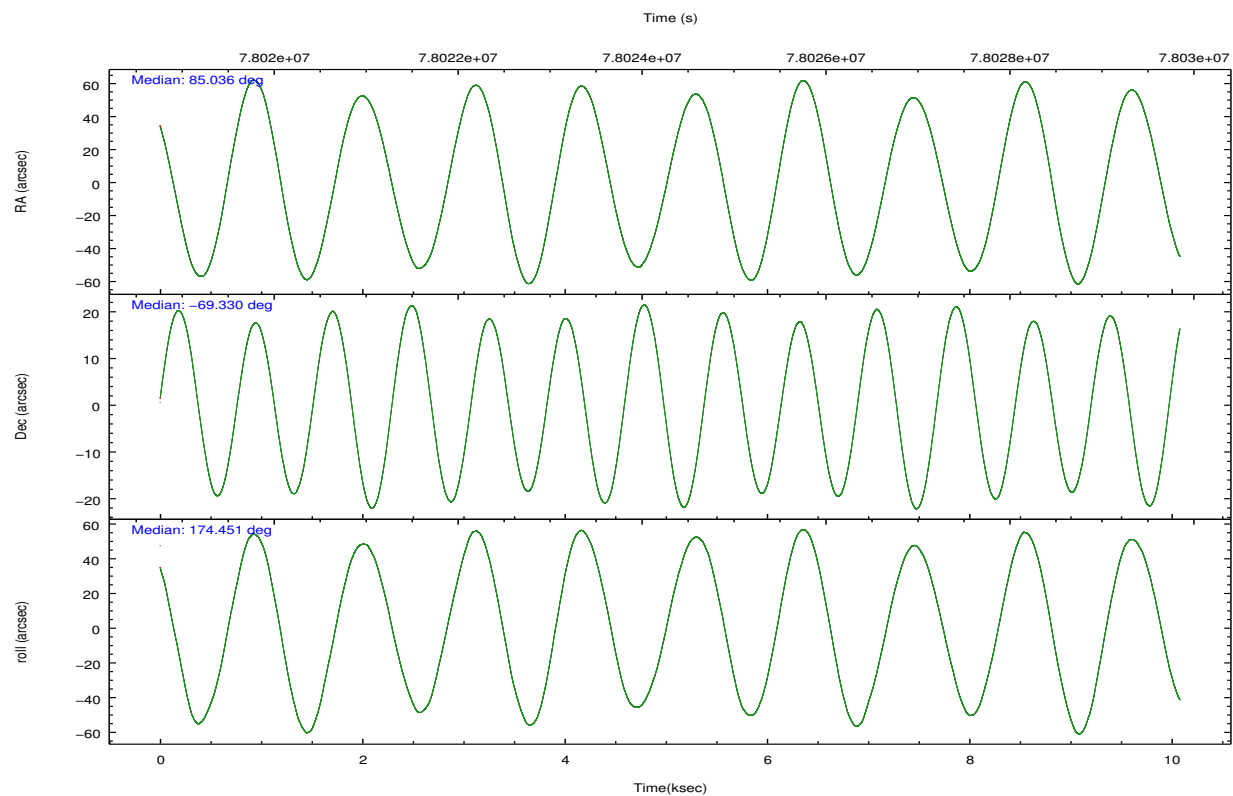
2.2 Compared Parameters

Parameter	Planned	Actual
Instrument	HRC	HRC
Detector	HRC-I	HRC-I
Grating	NONE	NONE
Data mode	OBSERVING	OBSERVING
Observation mode	POINTING	POINTING
[deg] Pointing RA	85.104948	85.03499843946678
[deg] Pointing Dec	-69.318233	-69.32984772751902
[deg] Pointing Roll	174.615931	174.4549951769658
[mm] SIM focus pos	-1.040293	-1.038866356238299
[mm] SIM defocus	0	0.001426264420575141
[mm] SIM translation stage pos	126.985494	126.9829799899862
[mm] SIM translation stage offset	0	0.002508901615314585
[s] Observation start time (MET)	78019457.184000	78019080.998576
Observation start date	2000-06-22T00:03:13	2000-06-21T23:58:00
[s] Observation end time (MET)	78029342.184000	78029476.03646
Observation end date	2000-06-22T02:47:58	2000-06-22T02:51:16

Parameter	Planned	Actual
Obspar format version number	7	7
Obspar file type	PREDICTED	ACTUAL
Obspar update status	NONE	UPDATED

2.3 Aspect



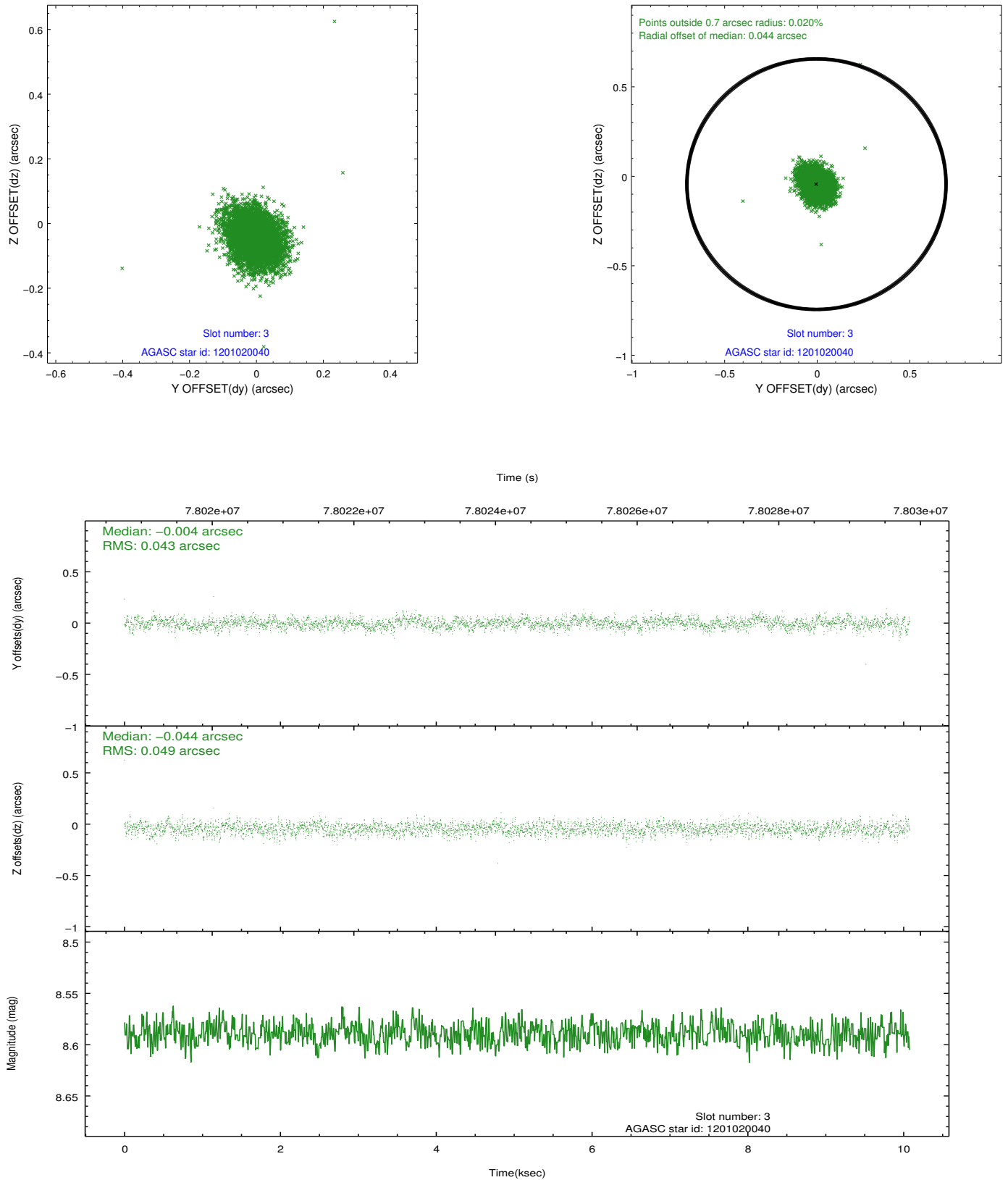


Slot Statistics

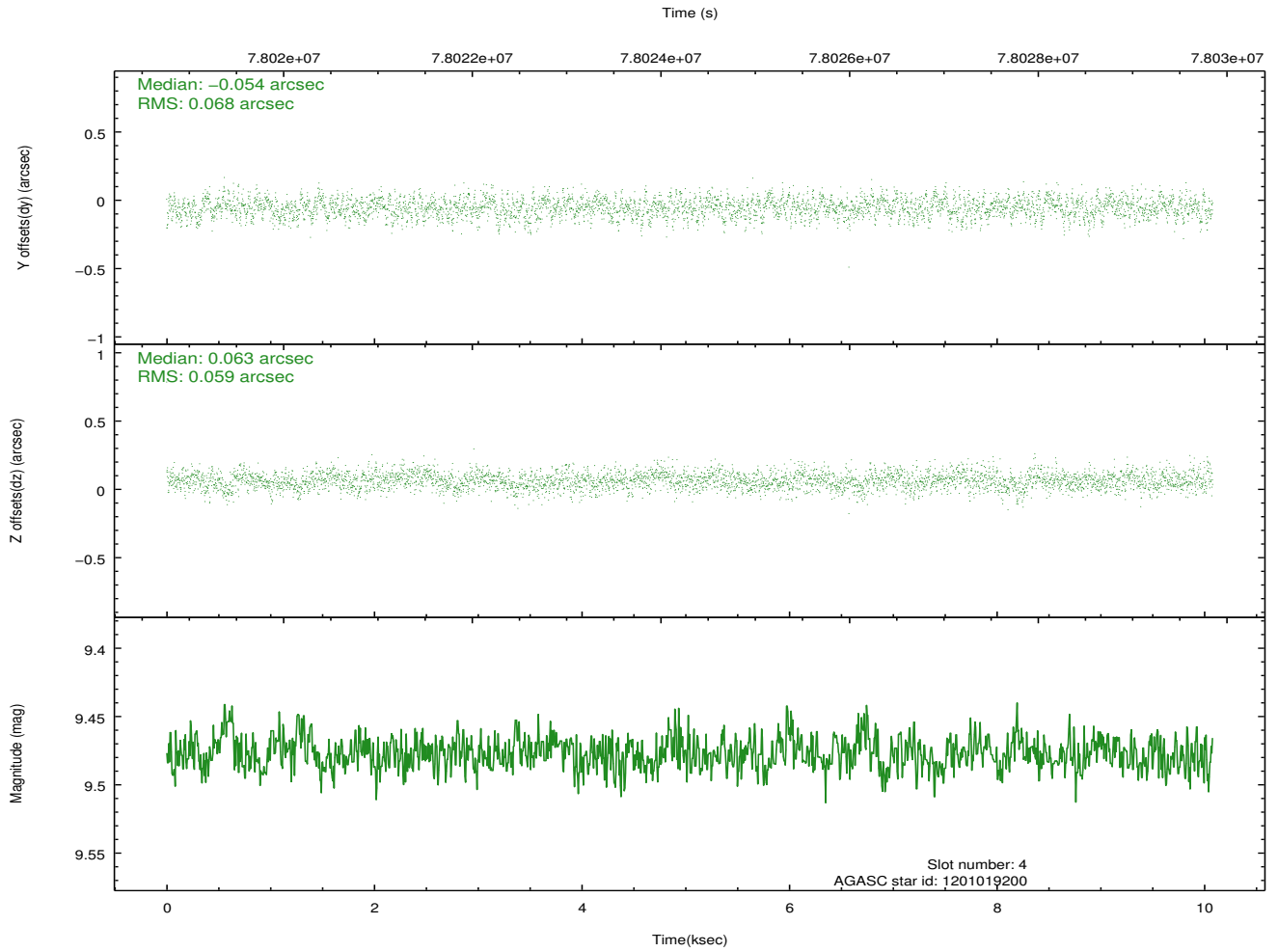
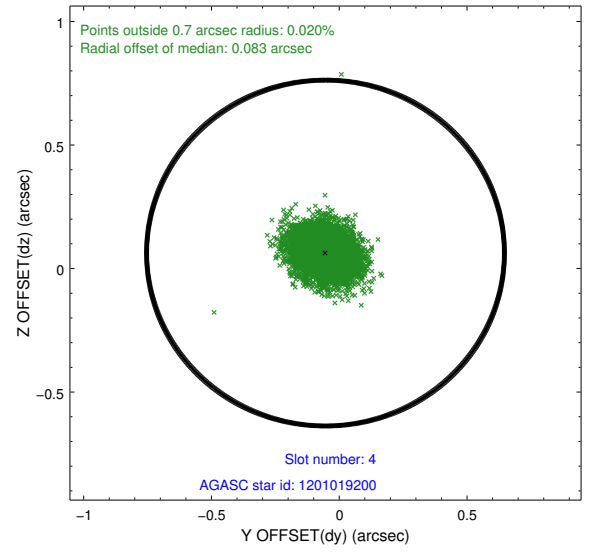
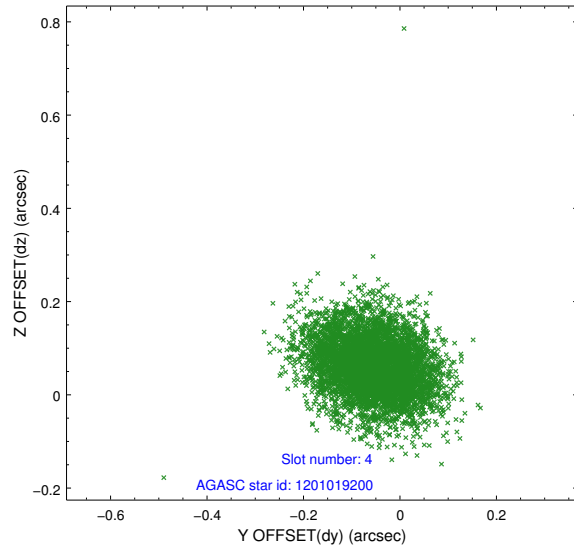
slot	status	id	mag	n_pts	med_dy	med_dz	dr1	dr2	ra	dec	mean_y	mean_z
0	FID	HRC-I-1	6.94	2457	0.067	0.025	0.006	0.010	0.000000	0.000000	-757.27	-1290.67
1	FID	HRC-I-3	7.03	2457	0.029	-0.047	0.007	0.011	0.000000	0.000000	-1186.01	1013.32
2	FID	HRC-I-4	6.98	2457	0.018	-0.068	0.005	0.008	0.000000	0.000000	1285.08	1011.74
3	GUIDE	1201020040	8.59	4912	-0.004	-0.044	0.067	0.110	85.379163	-68.879396	-205.07	-1605.12
4	GUIDE	1201019200	9.48	4908	-0.054	0.063	0.095	0.153	84.213591	-68.777384	1339.21	-1820.89
5	GUIDE	1201406992	9.27	4913	0.060	-0.058	0.083	0.138	83.682859	-69.471866	1734.39	739.93
6	GUIDE	1200885760	9.47	4910	-0.089	0.075	0.098	0.157	83.723637	-68.777667	1973.93	-1747.67
7	GUIDE	1201020088	10.59	4837	0.085	-0.036	0.138	0.224	86.319248	-68.997756	-1451.34	-1280.55

2.4 Star Slots

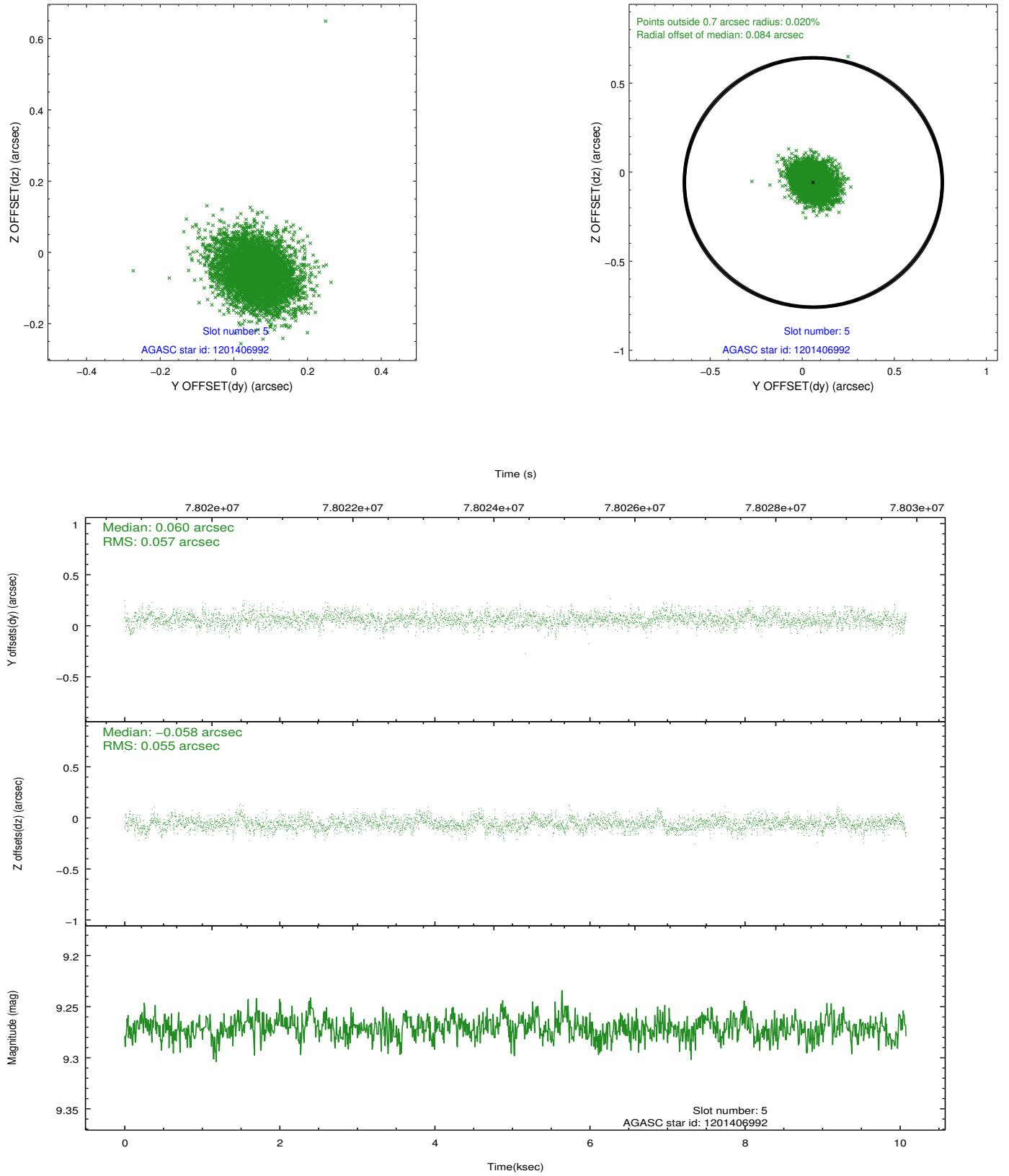
2.4.1 Slot 3



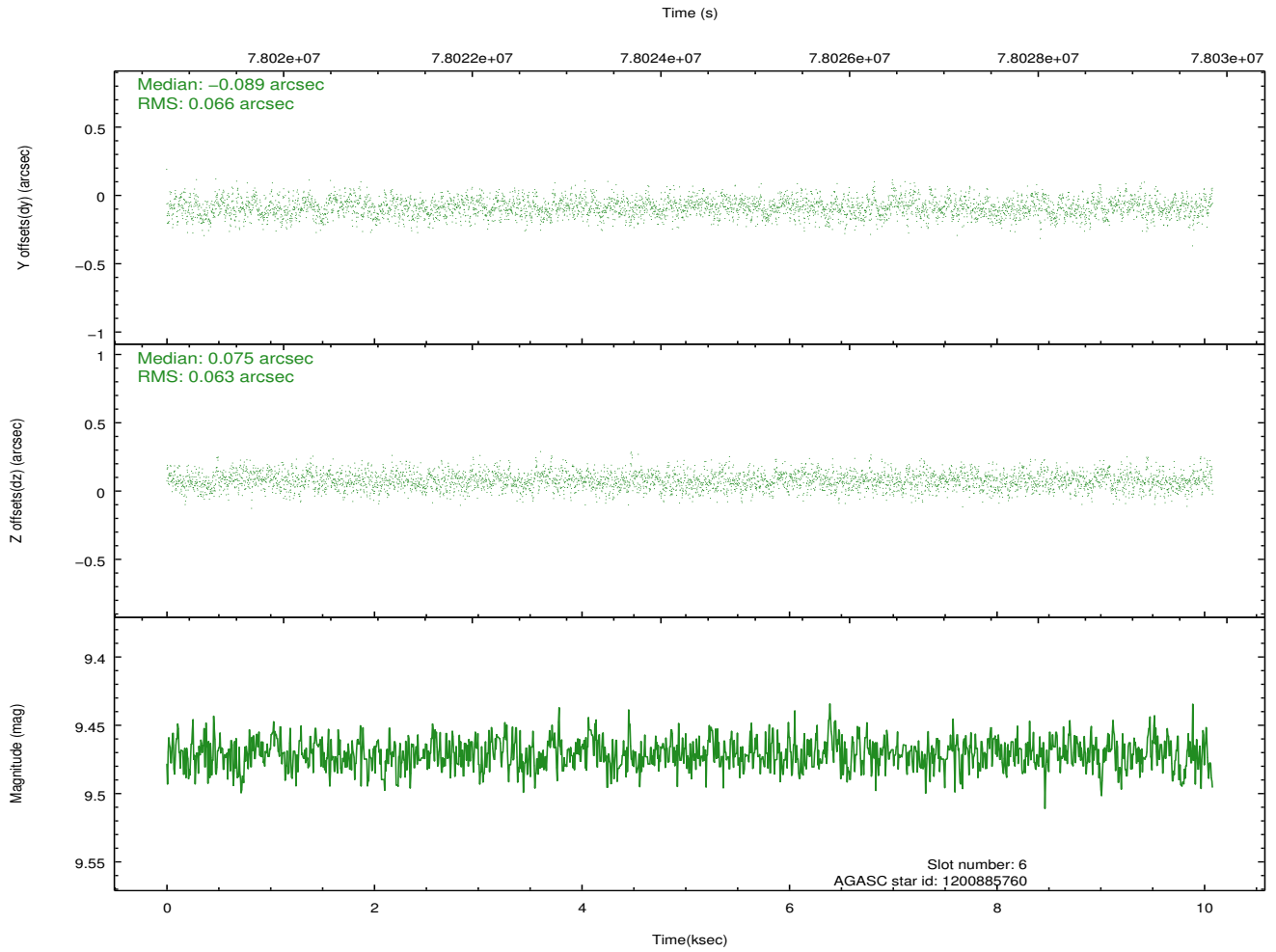
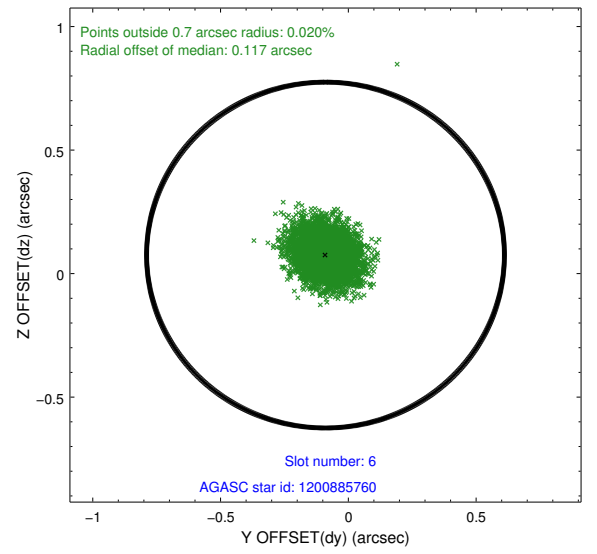
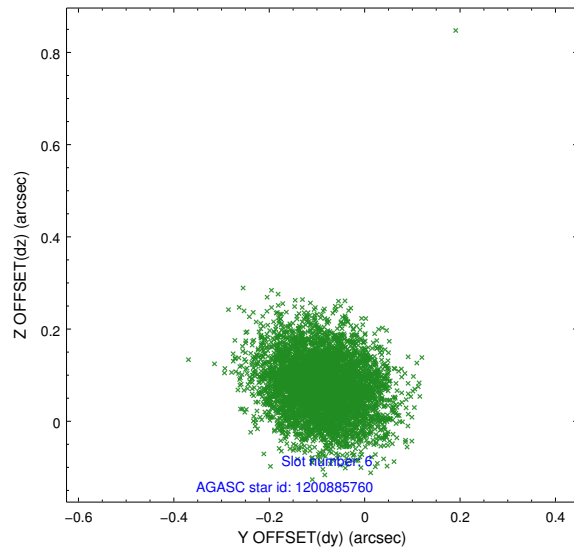
2.4.2 Slot 4



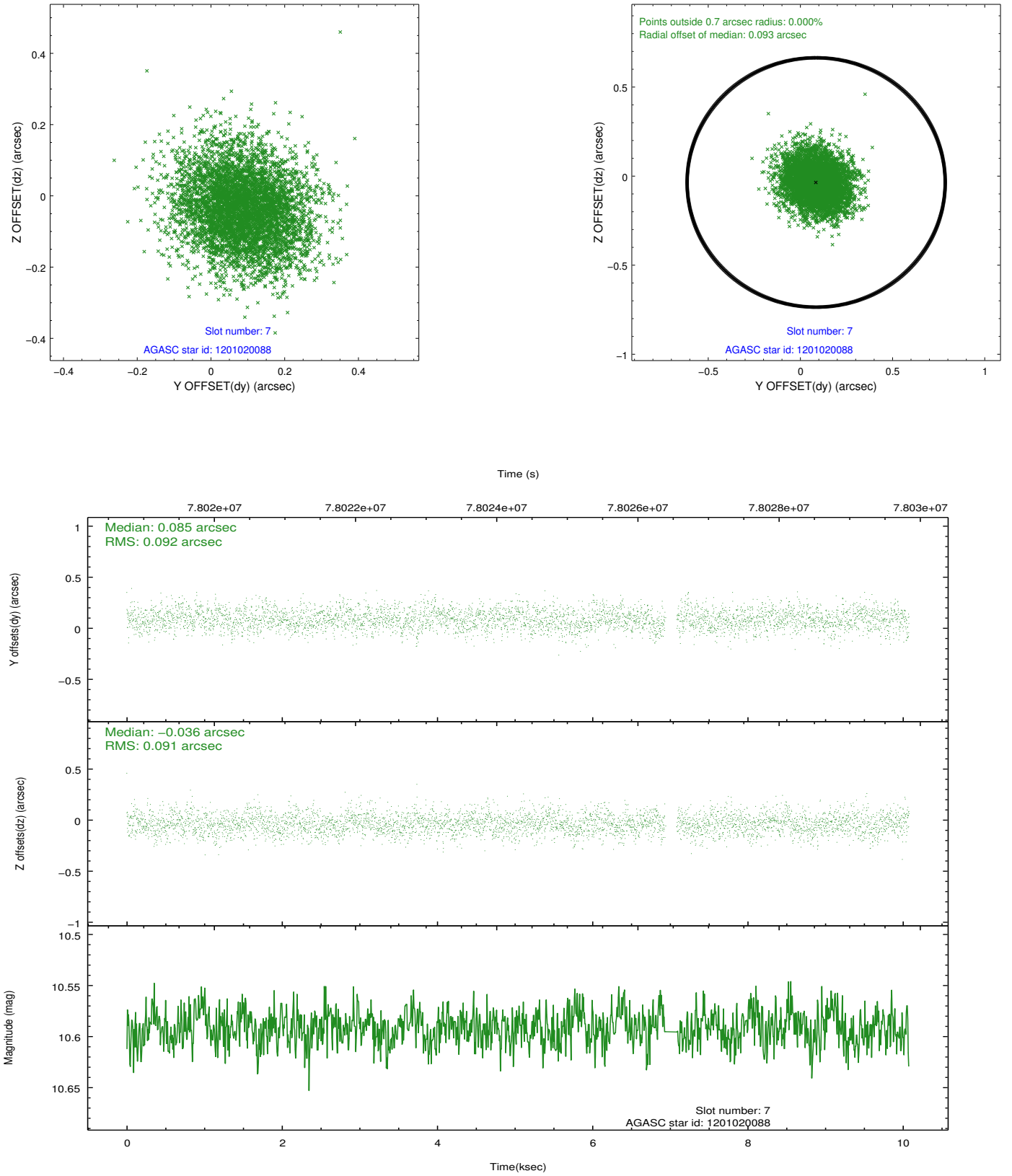
2.4.3 Slot 5



2.4.4 Slot 6

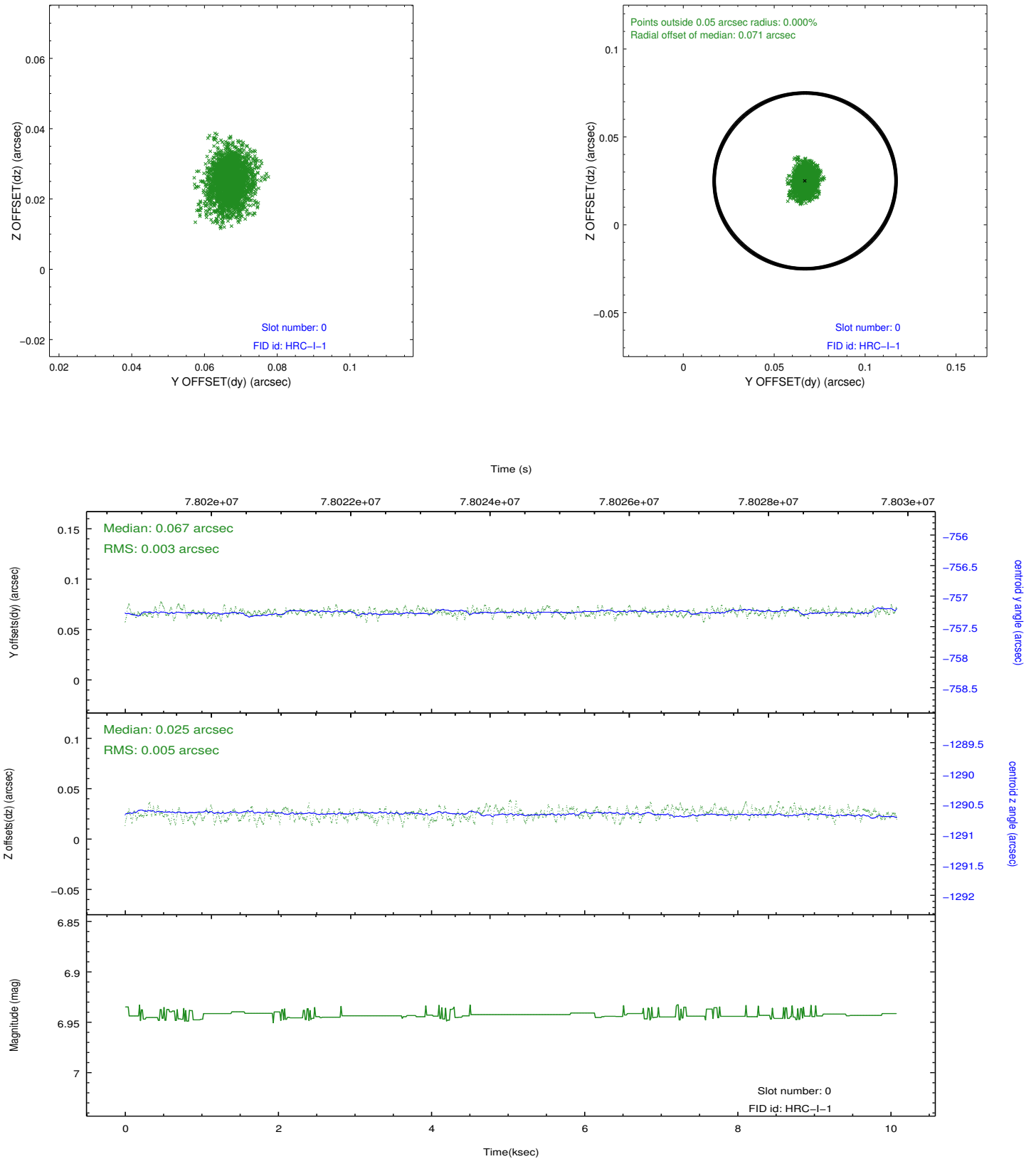


2.4.5 Slot 7

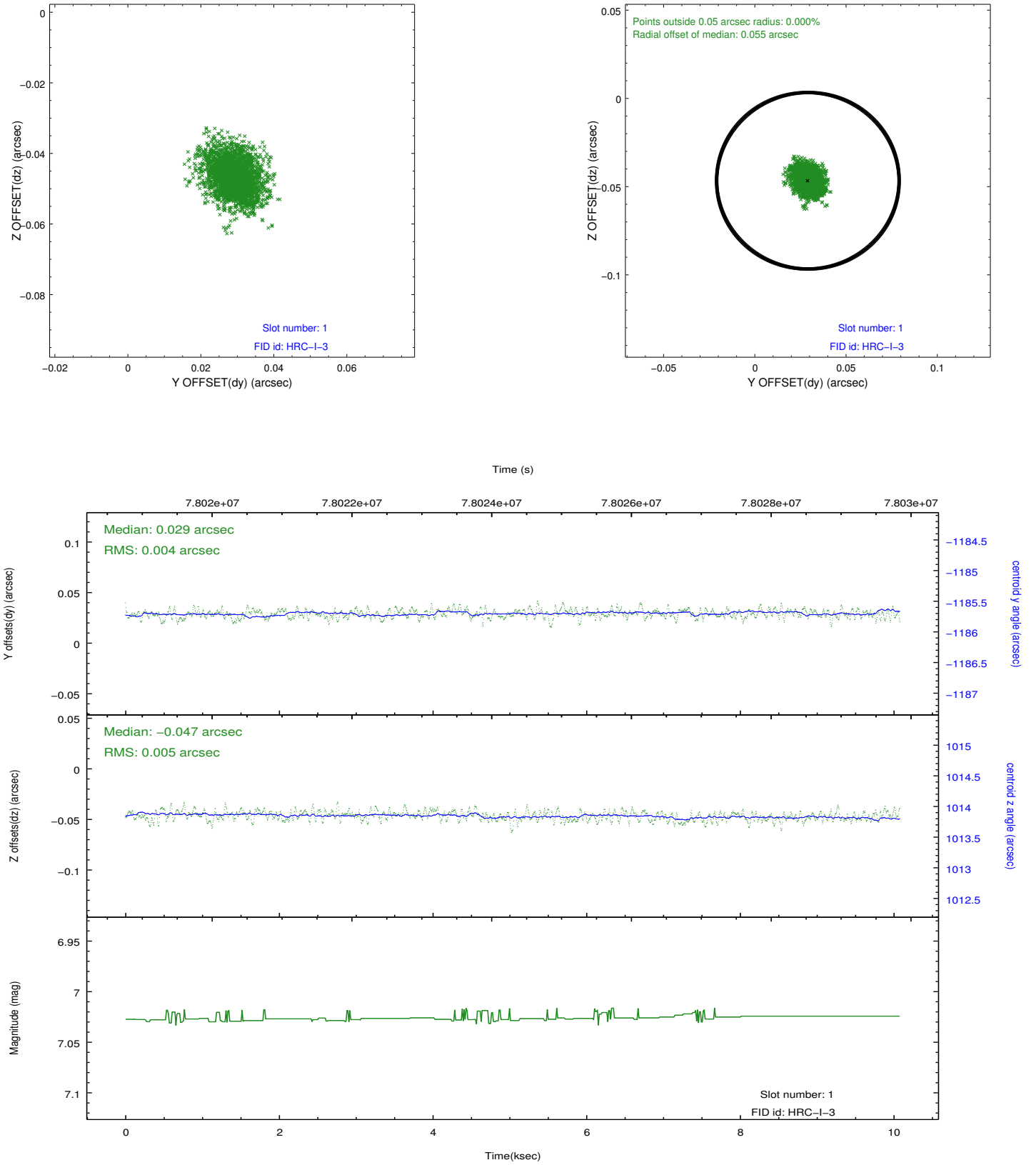


2.5 FID Slots

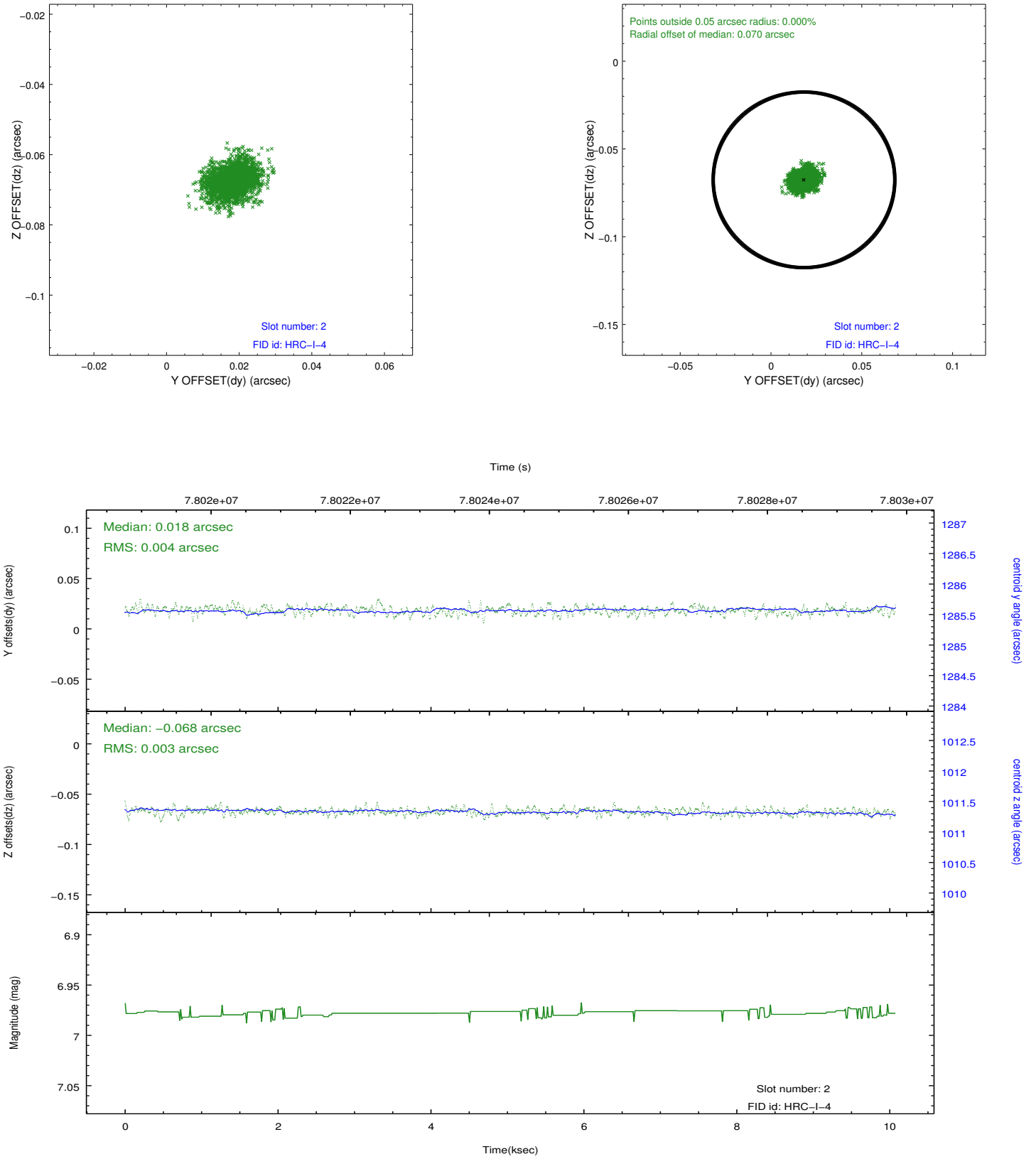
2.5.1 Slot 0



2.5.2 Slot 1



2.5.3 Slot 2



A Summary

A.1 Status

V&V Scientist	Jen Lauer
V&V Date (YYYY-MM-DD)	2012.08.31
V&V Edition	1
V&V Disposition and Status	OK
V&V Charge Time	10.036

A.2 Comments