

# V&V Reference Report

## L2 ASCDS Version : 8.4.3

Observation 13546 - L2 Version 2  
Chandra X-Ray Center

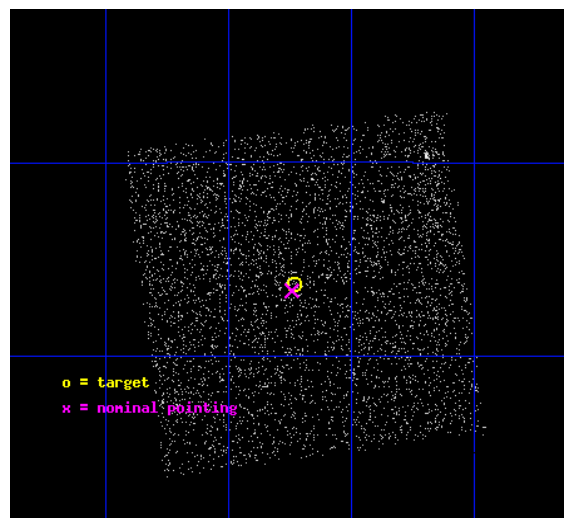
L2 Processing Date : Feb 25 2012

## Contents

<b>1</b>	<b>Front</b>	<b>2</b>
<b>2</b>	<b>OBI</b>	<b>3</b>
2.1	OBI . . . . .	3
2.1.1	Images . . . . .	3
2.1.2	Bias . . . . .	3
2.1.3	Parameters . . . . .	4
2.1.4	Events . . . . .	4
2.2	Compared Parameters . . . . .	5
2.3	Aspect . . . . .	6
2.4	Star Slots . . . . .	9
2.4.1	Slot 3 . . . . .	9
2.4.2	Slot 4 . . . . .	10
2.4.3	Slot 5 . . . . .	11
2.4.4	Slot 6 . . . . .	12
2.4.5	Slot 7 . . . . .	13
2.5	FID Slots . . . . .	14
2.5.1	Slot 0 . . . . .	14
2.5.2	Slot 1 . . . . .	15
2.5.3	Slot 2 . . . . .	16
<b>A</b>	<b>Summary</b>	<b>17</b>
A.1	Status . . . . .	17
A.2	Comments . . . . .	17

# 1 Front

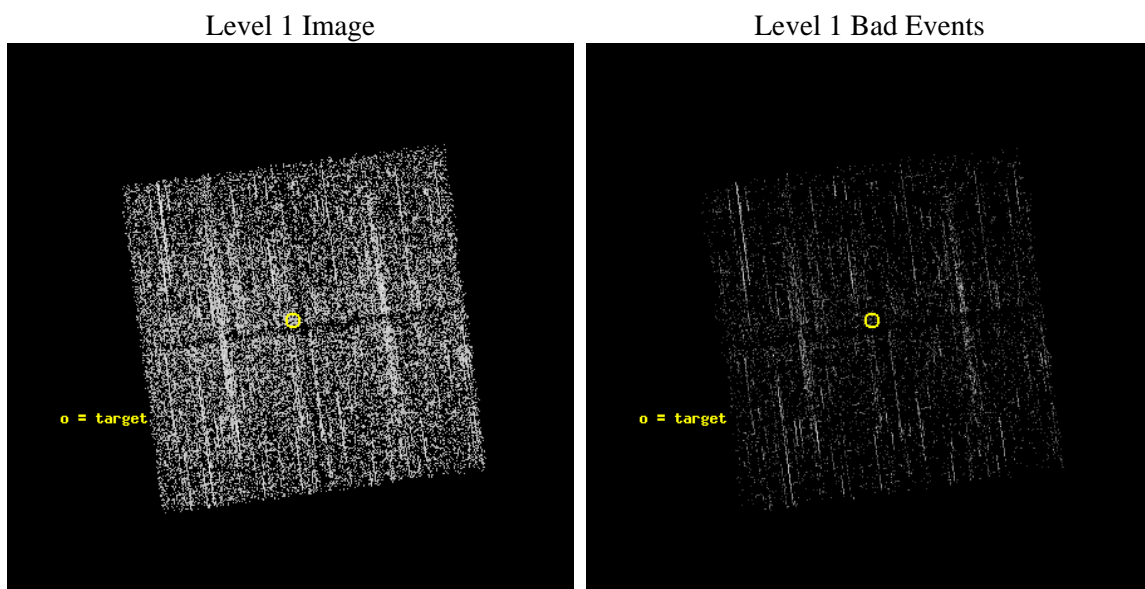
seq_num	401322	Sequence number
obs_id	13546	Observation id
title	Completing the Galactic Bulge Survey: categorizing the plethora of faint X-ray sources in the Galactic Bulge	Proposal title
observer	dr P Jonker	Principal investigator
object	GBS13-2	Source name
dtcycle	0	&#160
cycle	P	events from which exps? Prim/Second/Both
ra_targ	267.183518	Observer's specified target RA [deg]
dec_targ	-31.104834	Observer's specified target Dec [deg]
ra_nom	267.18553867273	Nominal RA [deg]
dec_nom	-31.110575268627	Nominal Dec [deg]
roll_nom	262.45193861185	Nominal Roll [deg]
revision	2	Processing version of data
ontime	1973.9568523765	Sum of GTIs [s]
livetime	1948.1656528943	Livetime [s]
ontime0	1973.8337323666	Sum of GTIs [s]
ontime1	1973.8747723699	Sum of GTIs [s]
ontime2	1973.9158123732	Sum of GTIs [s]
ontime3	1973.9568523765	Sum of GTIs [s]
l2events	5122	Number of level 2 events



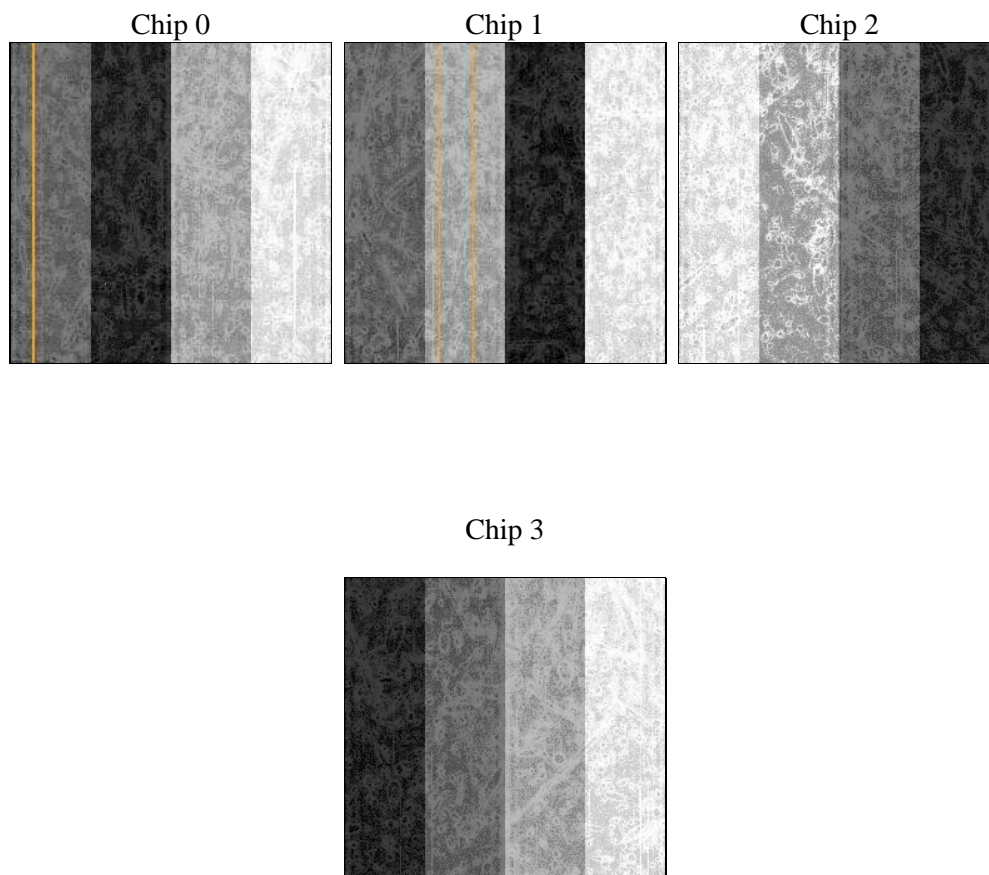
## 2 OBI

### 2.1 OBI

#### 2.1.1 Images



#### 2.1.2 Bias



### 2.1.3 Parameters

obi_num	0	Obi number	sched_exp_time	2180.000000	[s] Scheduled observation exposure time
ascdsver	8.4.3	Processing system revision	ontime	1973.9568523765	Sum of GTIs [s]
caldsver	4.4.8	&#160	ontime0	1973.8337323666	Sum of GTIs [s]
date	2012-02-26T01:15:46	Date and time of file creation	ontime1	1973.8747723699	Sum of GTIs [s]
revision	2	Processing version of data	ontime2	1973.9158123732	Sum of GTIs [s]
			ontime3	1973.9568523765	Sum of GTIs [s]
			l1events	47289	Number of level 1 events

### 2.1.4 Events

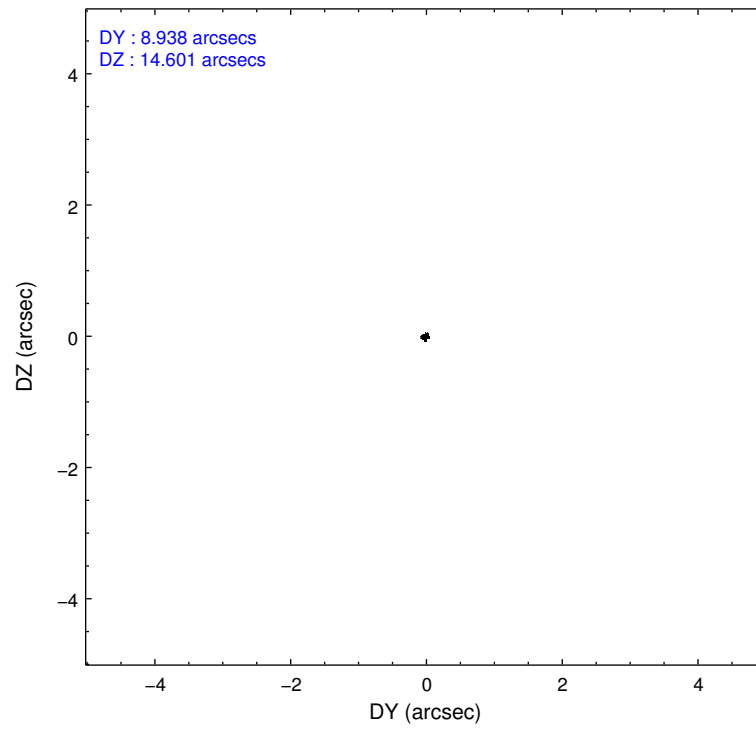
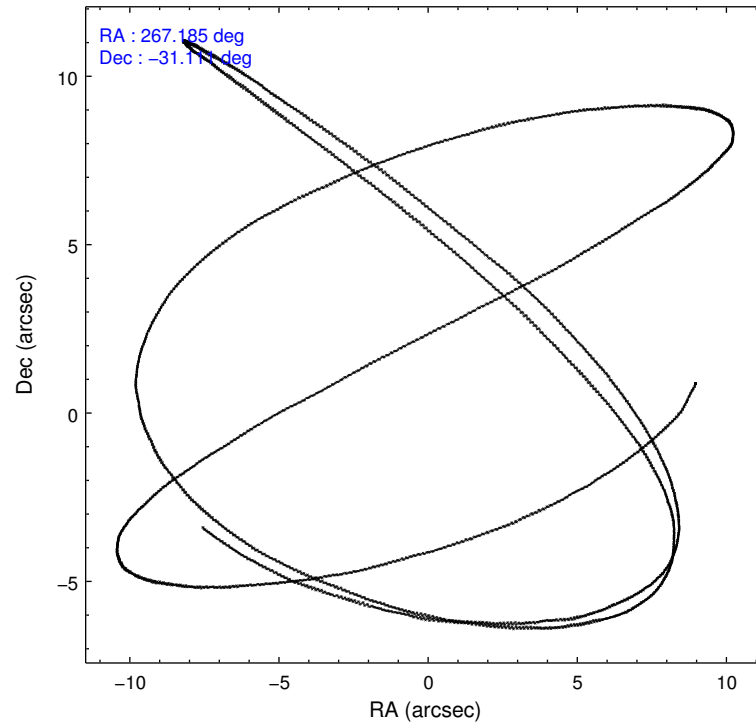
	ccd 0	ccd 1	ccd 2	ccd 3
level 1 events	11077	10801	12714	12697
rejected events	9626	9133	11253	11200
rejected %	86%	84%	88%	88%

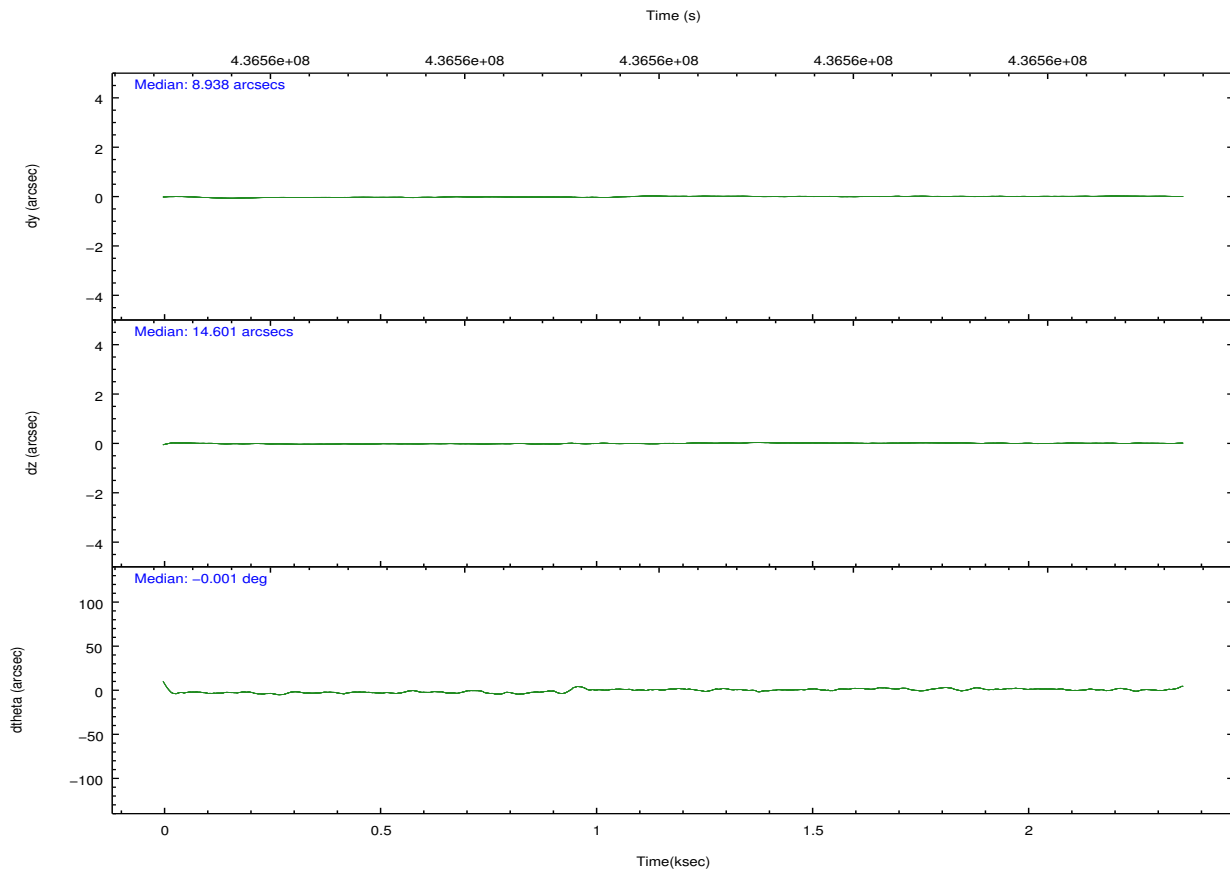
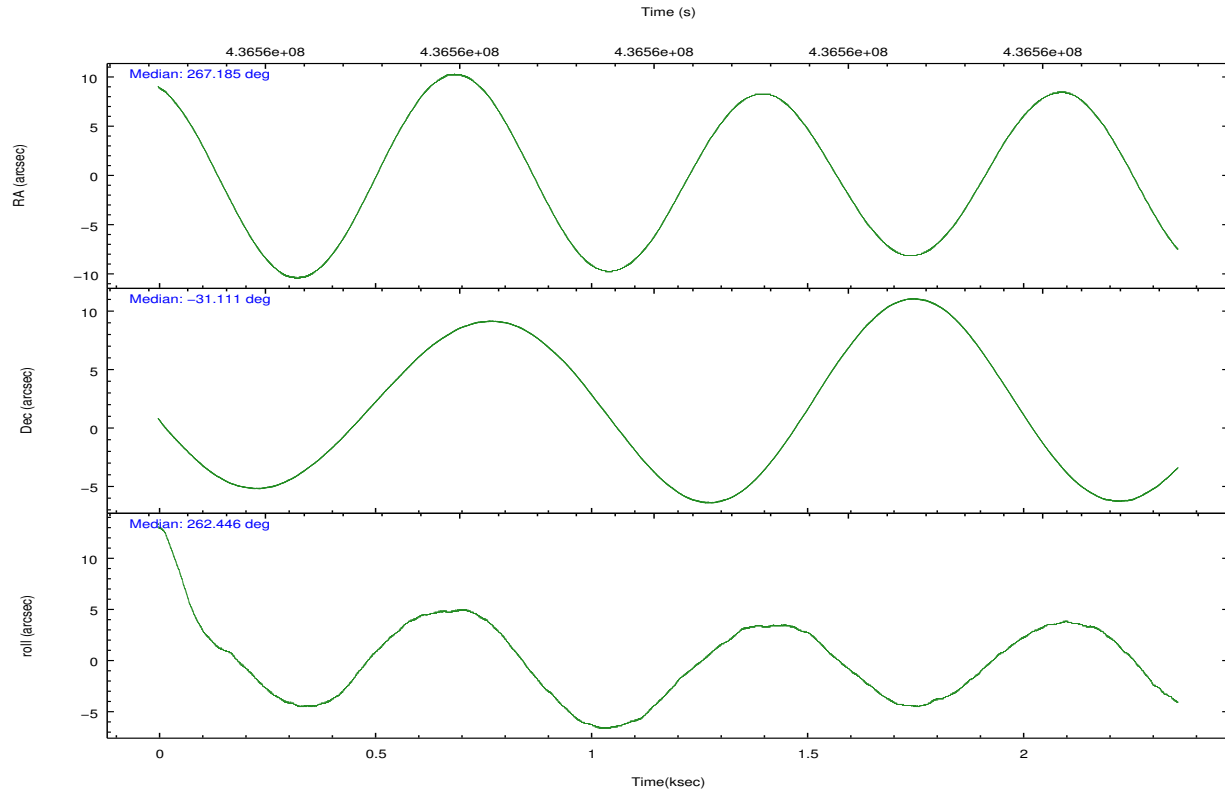
	ccd 0	ccd 1	ccd 2	ccd 3
grade 0 events	543	690	540	636
	4%	6%	4%	5%
grade 1 events	7	5	7	5
	0%	0%	0%	0%
grade 2 events	370	356	363	297
	3%	3%	2%	2%
grade 3 events	158	170	130	143
	1%	1%	1%	1%
grade 4 events	125	171	155	141
	1%	1%	1%	1%
grade 5 events	538	556	492	555
	4%	5%	3%	4%
grade 6 events	261	290	276	287
	2%	2%	2%	2%
grade 7 events	9075	8563	10751	10633
	81%	79%	84%	83%

## 2.2 Compared Parameters

Parameter	Planned	Actual	Parameter	Planned	Actual
Instrument	ACIS	ACIS	Obspar format version number	7	7
Detector	ACIS-0123	ACIS-0123	Obspar file type	PREDICTED	ACTUAL
Grating	NONE	NONE	Obspar update status	NONE	UPDATED
Data mode	VFAINT	VFAINT	Number of optional ACIS chips dropped	0	0
Observation mode	POINTING	POINTING	On-chip summing requested	N	N
[deg] Pointing RA	267.173133	267.1855386727288	Subarray requested	NONE	NONE
[deg] Pointing Dec	-31.084949	-31.11057526862712	Alternating exposures requested	N	N
[deg] Pointing Roll	262.236868	262.4519386118506	[s] Primary exposure time	0.000000	3.1
[mm] SIM focus pos	-0.782348	-0.7809083437167272			
[mm] SIM defocus	0	0.001439871863259334			
[mm] SIM translation stage pos	-233.592463	-233.5874344608287			
[mm] SIM translation stage offset	0	-0.005018542100998502			
[s] Observation start time (MET)	436556529.184000	436556153.38376			
Observation start date	2011-11-01T17:41:03	2011-11-01T17:35:53			
[s] Observation end time (MET)	436558709.184000	436558842.9839			
Observation end date	2011-11-01T18:17:23	2011-11-01T18:20:42			
Read mode	TIMED	TIMED			

## 2.3 Aspect





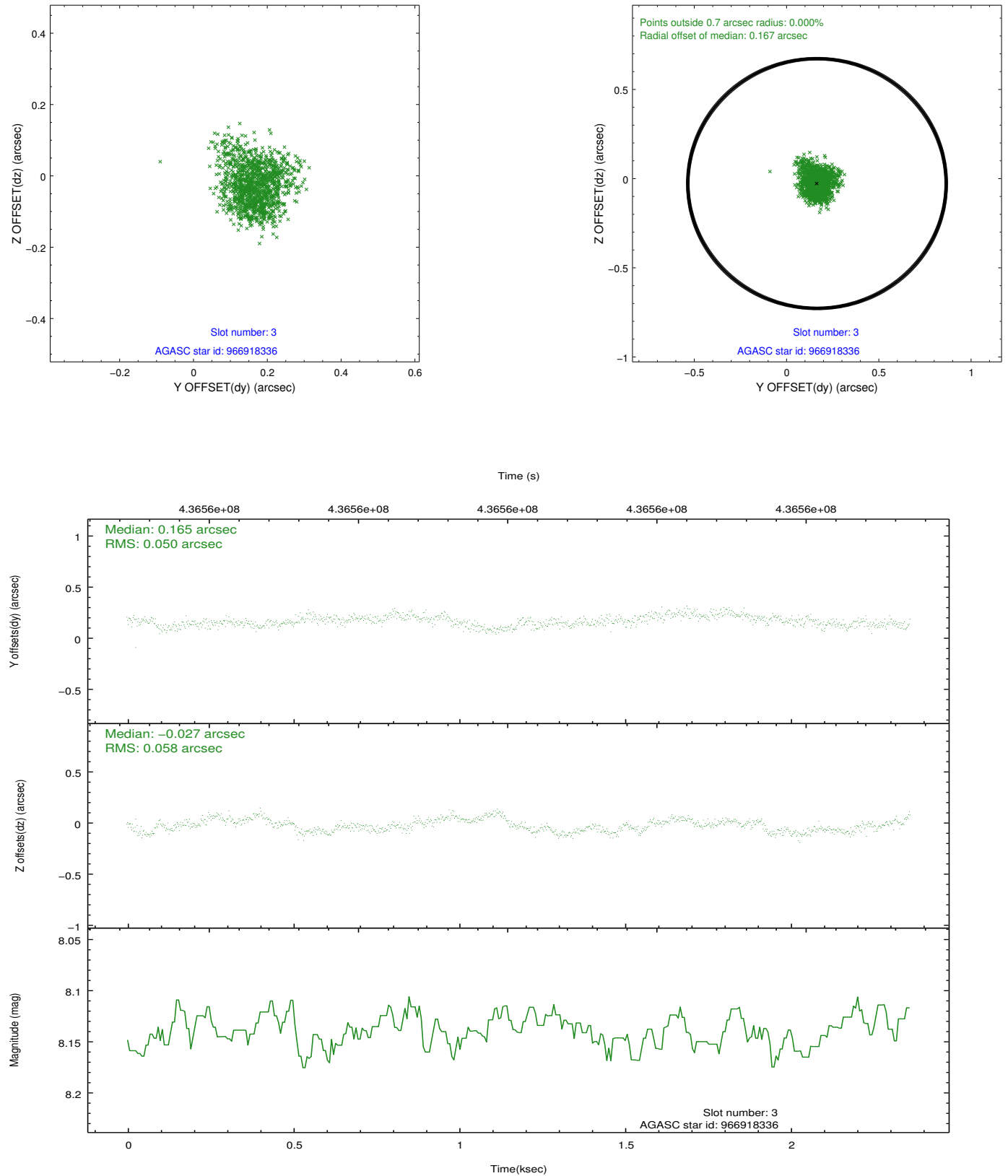
### Slot Statistics

slot	status	id	mag	n_pts	med_dy	med_dz	dr1	dr2	ra	dec	mean_y	mean_z
0	FID	ACIS-I-1	7.02	576	-0.007	0.071	0.018	0.032	0.000000	0.000000	930.68	-838.13
1	FID	ACIS-I-2	6.94	576	-0.188	-0.084	0.009	0.016	0.000000	0.000000	-762.06	-846.08
2	FID	ACIS-I-4	6.94	576	0.095	0.079	0.022	0.032	0.000000	0.000000	2149.44	1060.28
3	GUIDE	966918336	8.14	1153	0.165	-0.027	0.082	0.128	267.709998	-30.955430	-682.44	1579.75
4	GUIDE	966925512	8.29	1152	-0.029	-0.055	0.066	0.106	266.373606	-31.056700	240.40	-2454.31
5	GUIDE	966925632	8.93	1152	0.134	-0.089	0.098	0.147	266.388610	-30.982191	-30.36	-2450.27
6	GUIDE	966920512	8.37	1153	-0.269	0.076	0.061	0.102	267.231170	-30.494681	-2130.57	-110.87
7	GUIDE	967060832	9.30	1151	-0.006	0.099	0.093	0.146	267.800373	-31.675183	1848.67	2192.17

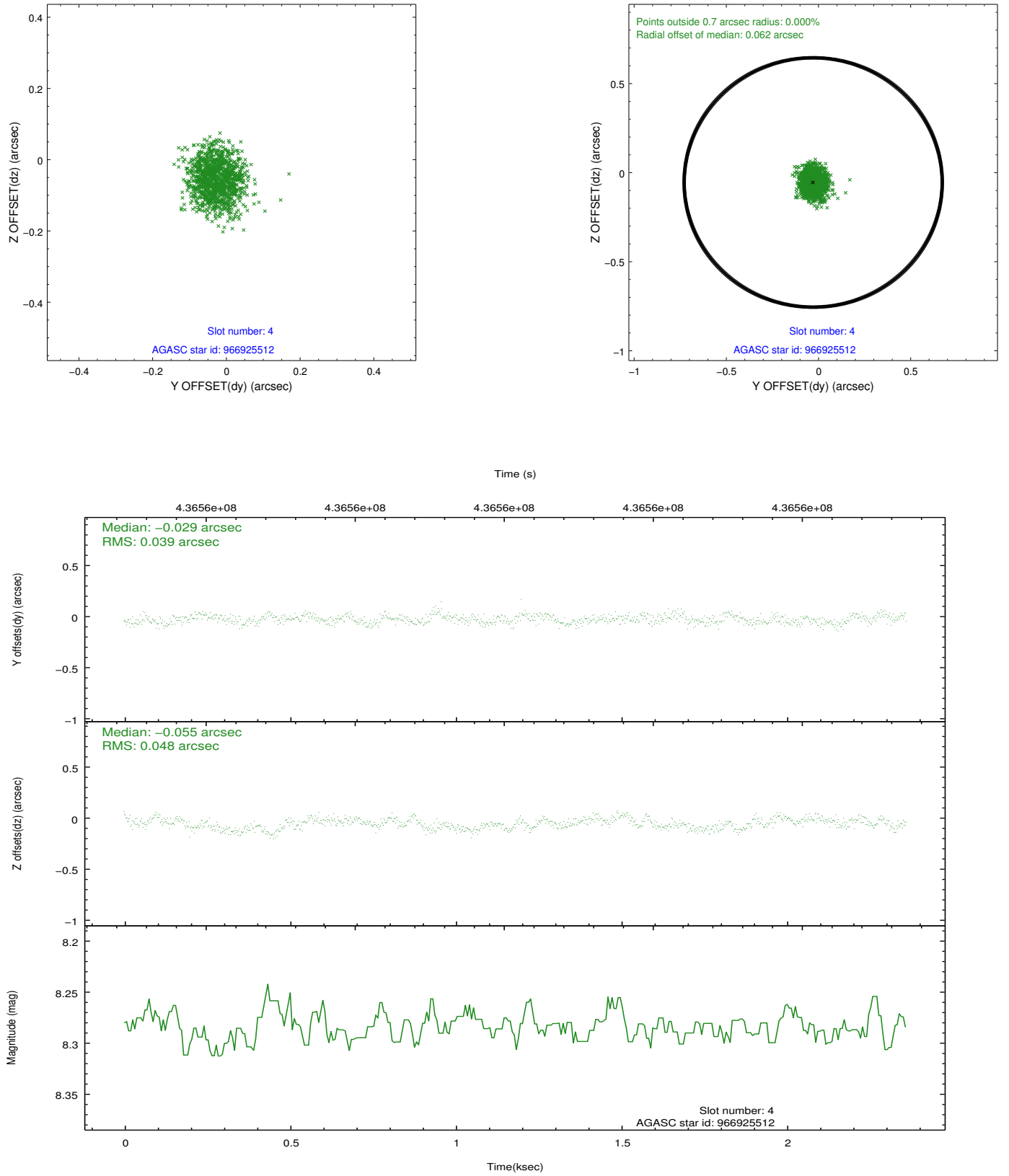


## 2.4 Star Slots

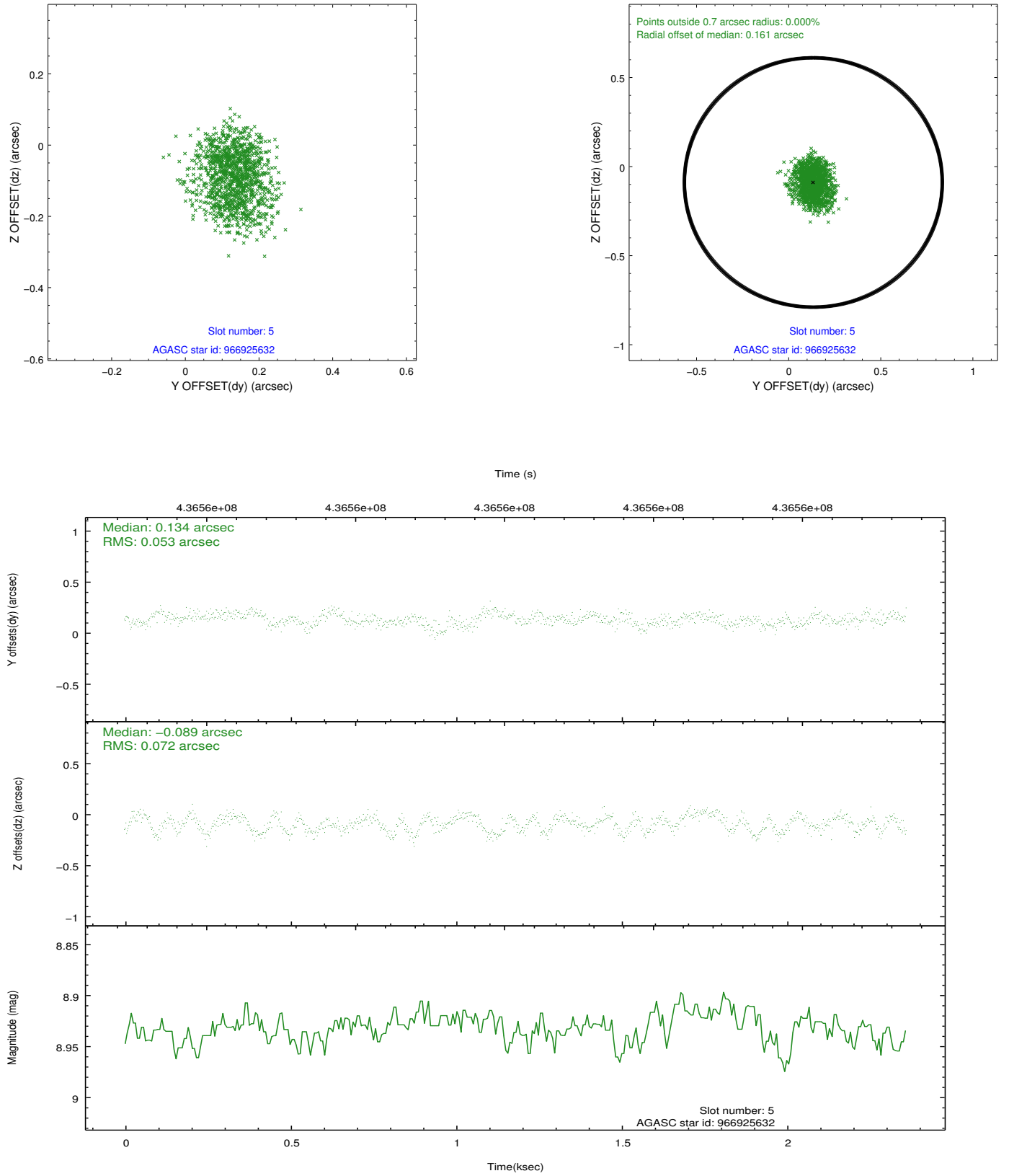
### 2.4.1 Slot 3



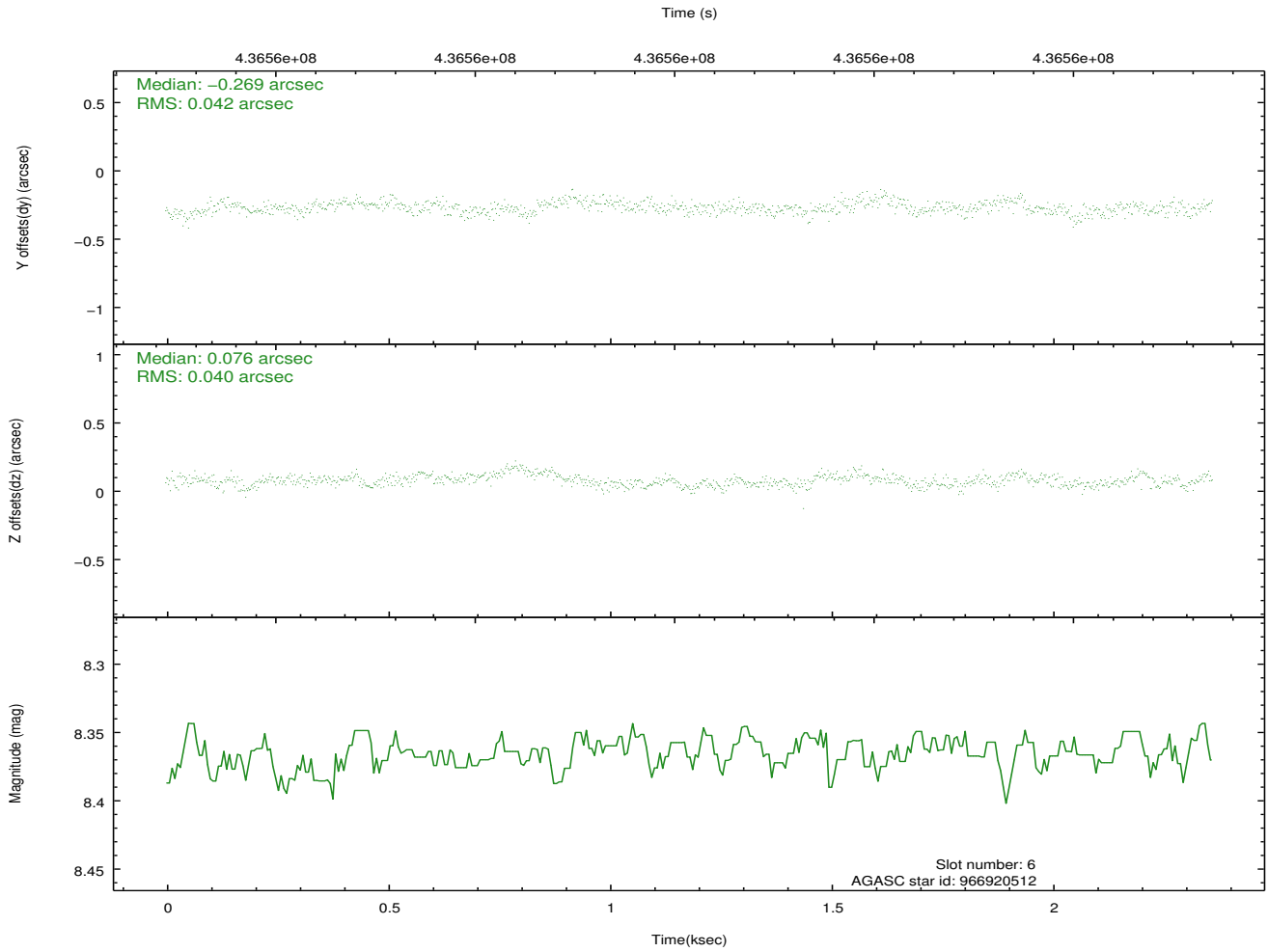
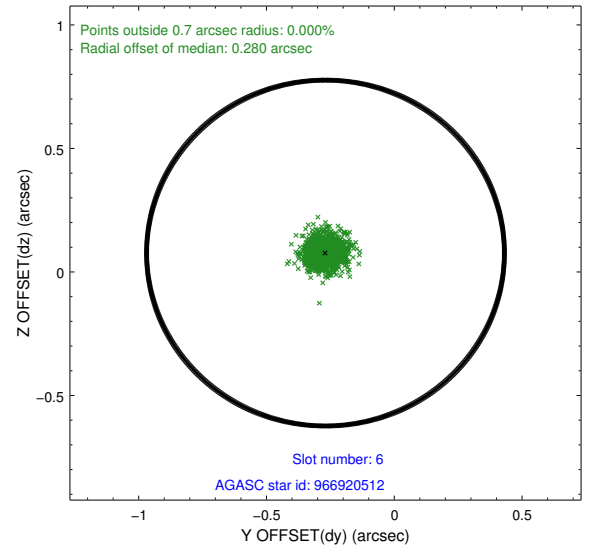
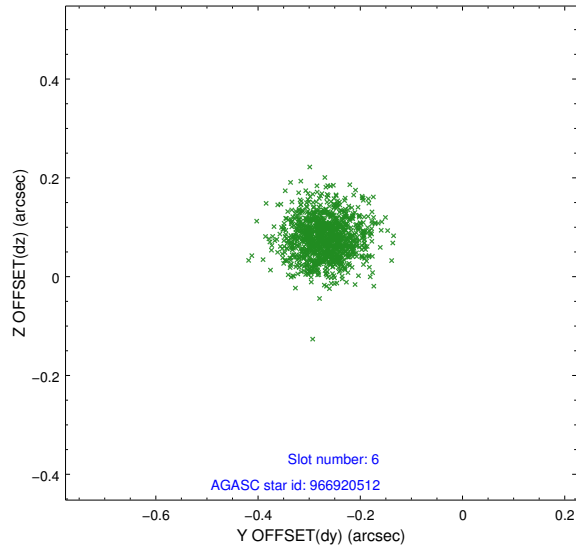
## 2.4.2 Slot 4



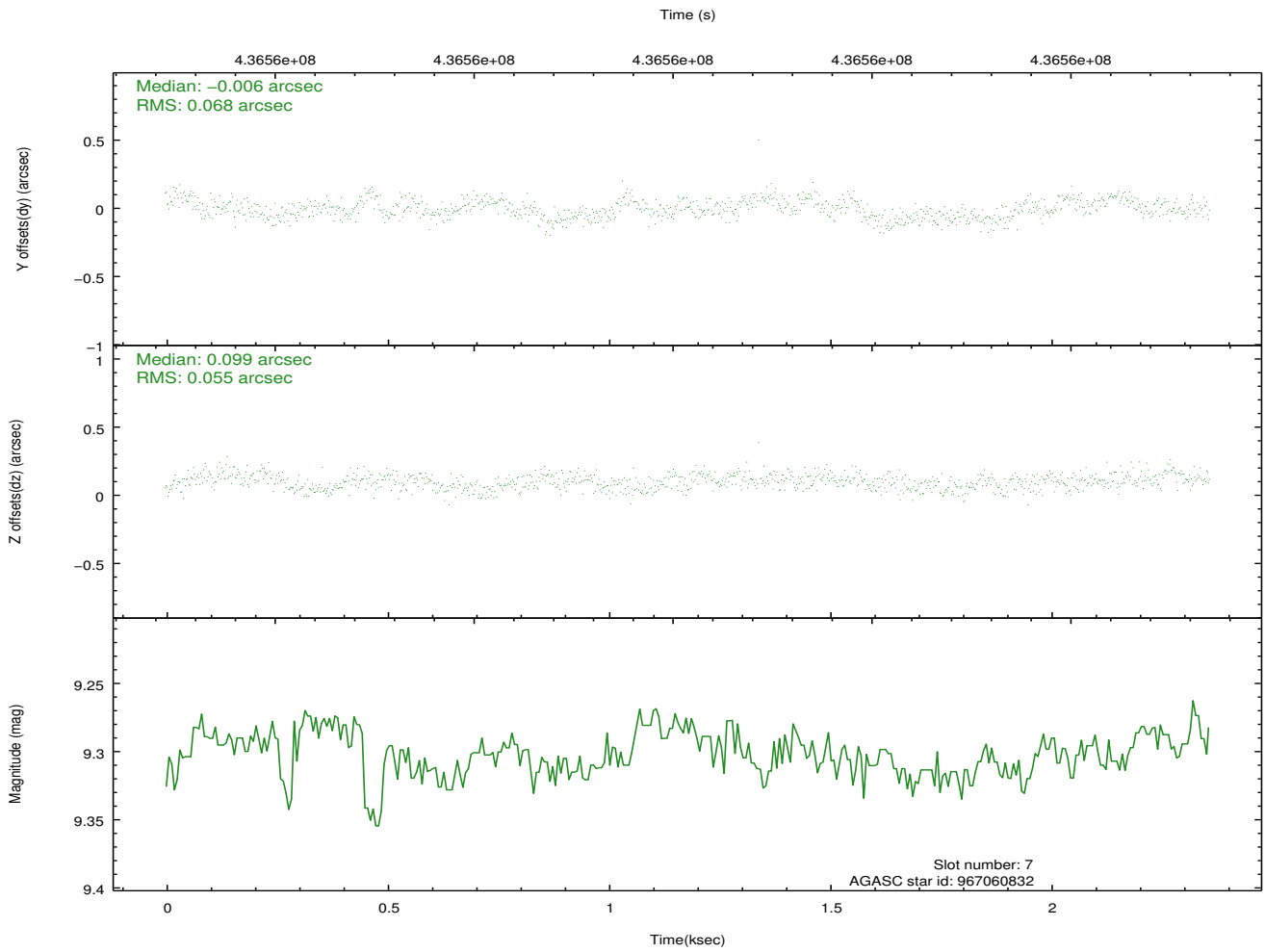
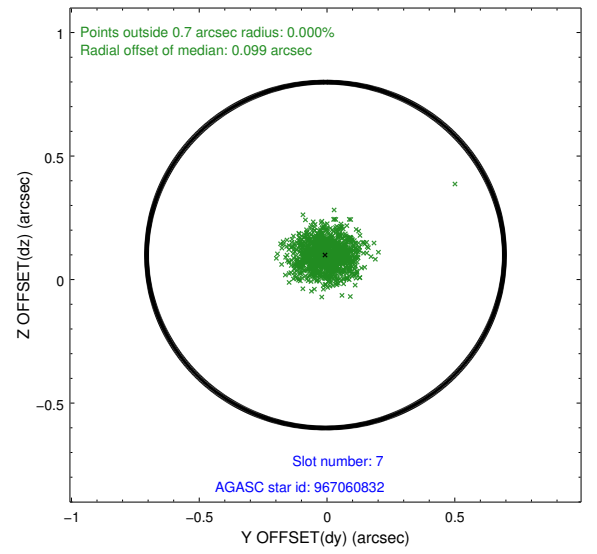
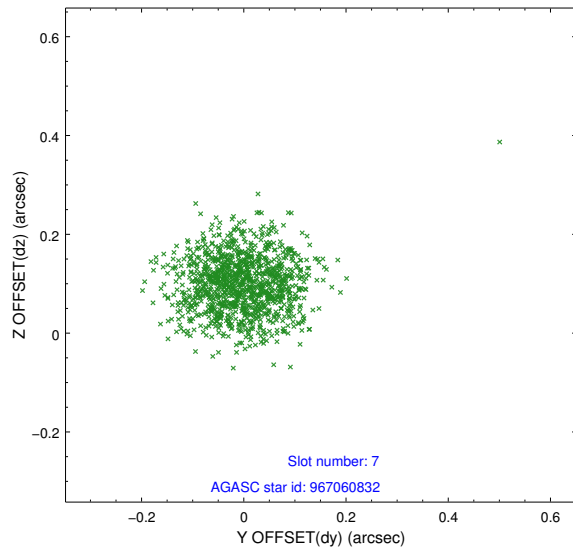
### 2.4.3 Slot 5



## 2.4.4 Slot 6

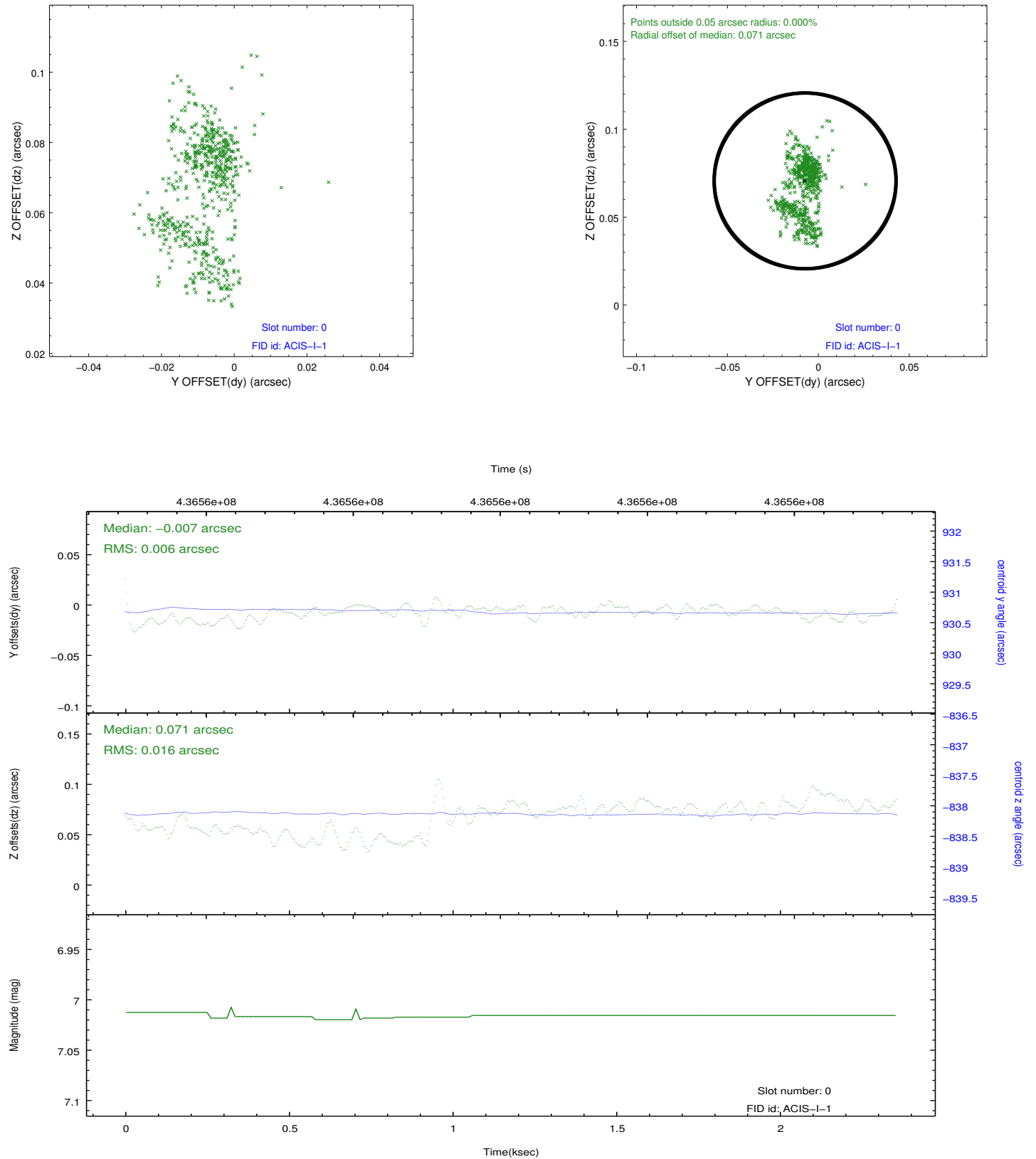


## 2.4.5 Slot 7

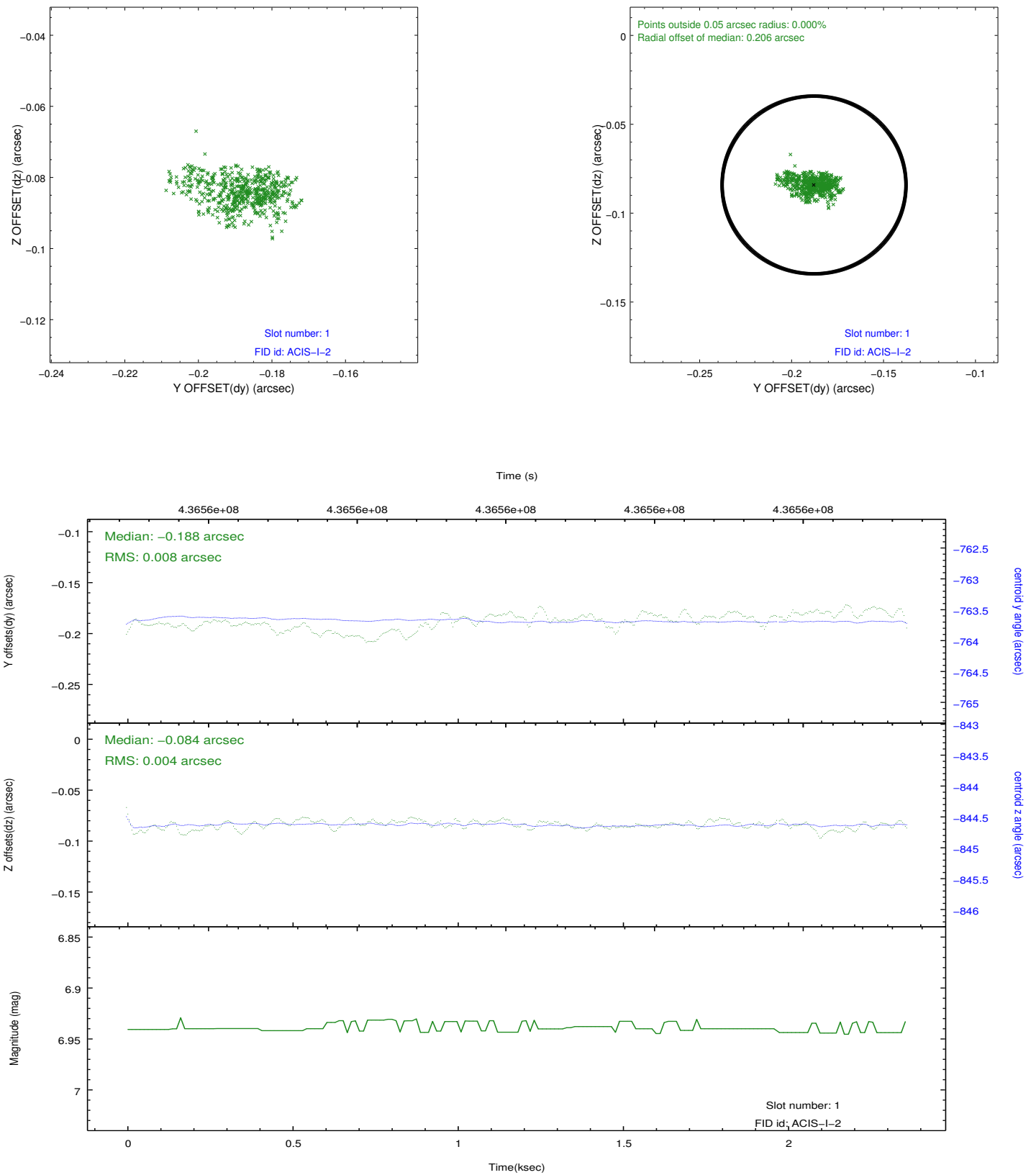


## 2.5 FID Slots

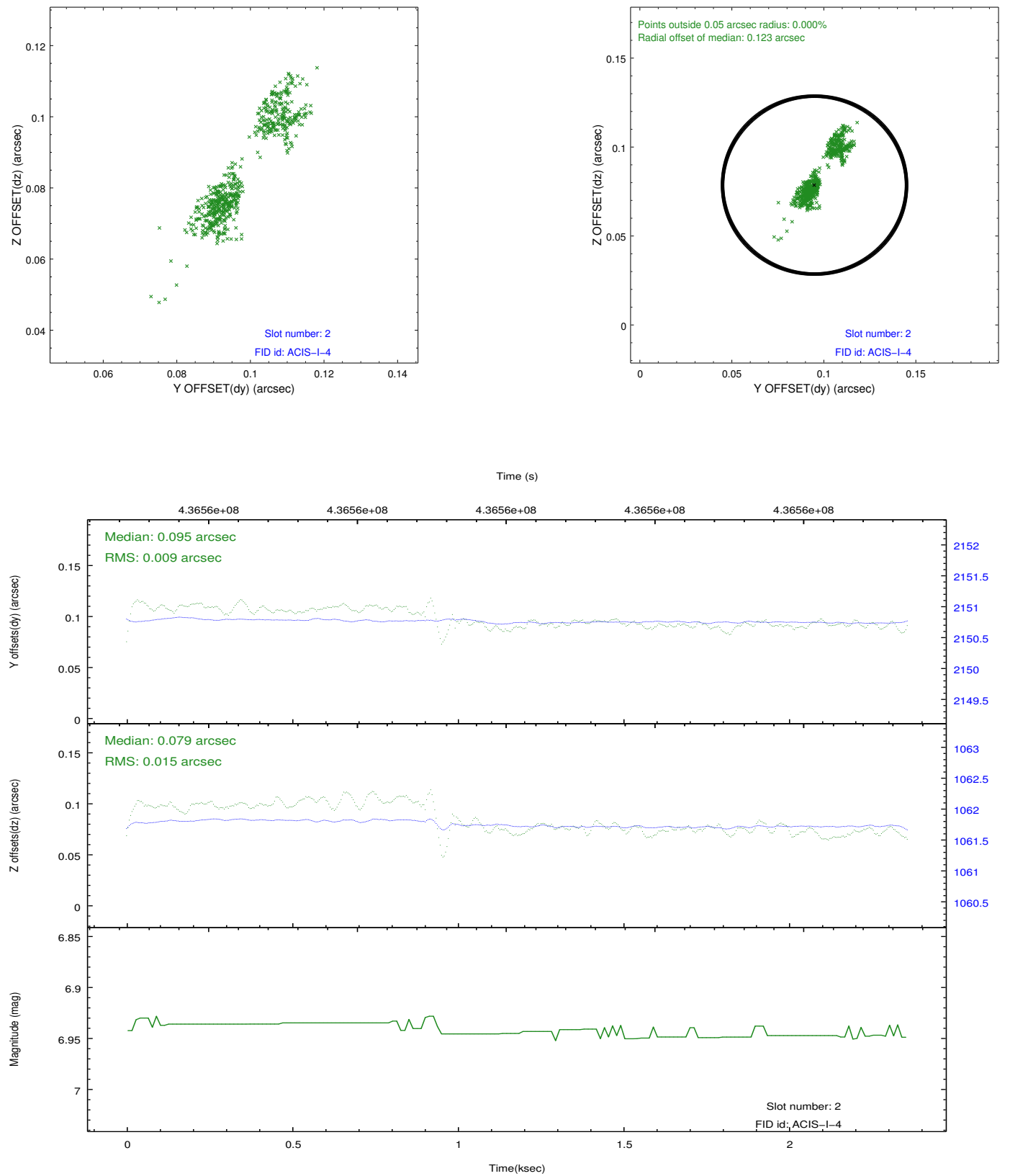
### 2.5.1 Slot 0



## 2.5.2 Slot 1



### 2.5.3 Slot 2





# A Summary

## A.1 Status

V&V Scientist	Jen Lauer
V&V Date (YYYY-MM-DD)	2012.02.27
V&V Edition	1
V&V Disposition and Status	OK
V&V Charge Time	1.9739568530917

## A.2 Comments

Joint Proposal: NOAO