

V&V Reference Report

L2 ASCDS Version : 8.4.3

Observation 13296 - L2 Version 2
Chandra X-Ray Center

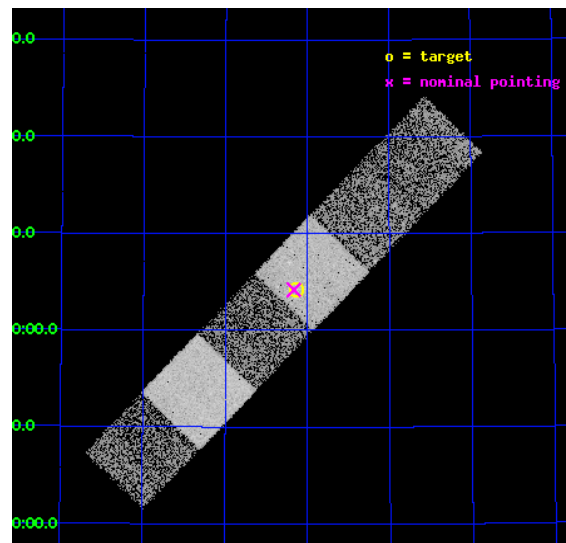
L2 Processing Date : Feb 19 2012

Contents

1	Front	2
2	OBI	3
2.1	OBI	3
2.1.1	Images	3
2.1.2	Bias	3
2.1.3	Parameters	4
2.1.4	Events	4
2.2	Compared Parameters	5
2.3	Aspect	6
2.4	Star Slots	9
2.4.1	Slot 3	9
2.4.2	Slot 4	10
2.4.3	Slot 5	11
2.4.4	Slot 6	12
2.4.5	Slot 7	13
2.5	FID Slots	14
2.5.1	Slot 0	14
2.5.2	Slot 1	15
2.5.3	Slot 2	16
A	Summary	17
A.1	Status	17
A.2	Comments	17

1 Front

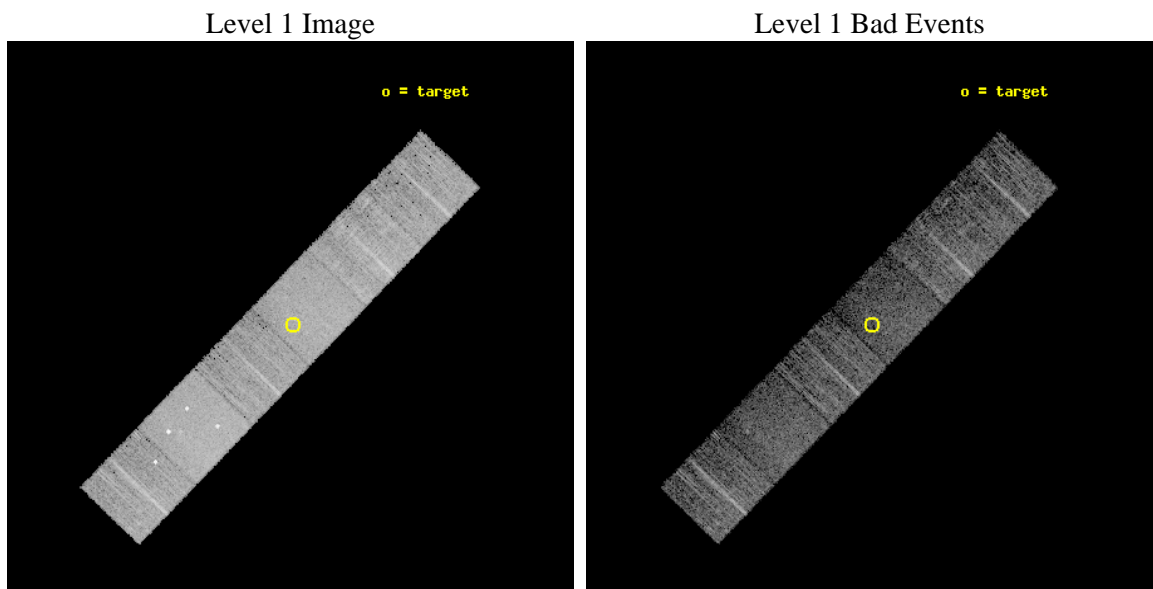
seq_num	600984	Sequence number
obs_id	13296	Observation id
title	Chandra follow-up of brignt off-nuclear X-ray sources in galaxies	P
observer	Dr Jelle Kaastra	Principal investigator
object	NGC3921	Source name
dtcycle	0	
cycle	P	events from which exps? Prim/Second/Both
ra_targ	177.783333	Observer's specified target RA [deg]
dec_targ	55.071111	Observer's specified target Dec [deg]
ra_nom	177.79152262443	Nominal RA [deg]
dec_nom	55.069855516562	Nominal Dec [deg]
roll_nom	313.91749929895	Nominal Roll [deg]
revision	2	Processing version of data
ontime	6050.9940863252	Sum of GTIs [s]
livetime	5974.3727557329	Livetime [s]
ontime4	6051.0351263285	Sum of GTIs [s]
ontime5	6050.9530463219	Sum of GTIs [s]
ontime6	6050.9120063186	Sum of GTIs [s]
ontime7	6050.9940863252	Sum of GTIs [s]
ontime8	6050.8709663153	Sum of GTIs [s]
ontime9	6050.829926312	Sum of GTIs [s]
l2events	65732	Number of level 2 events



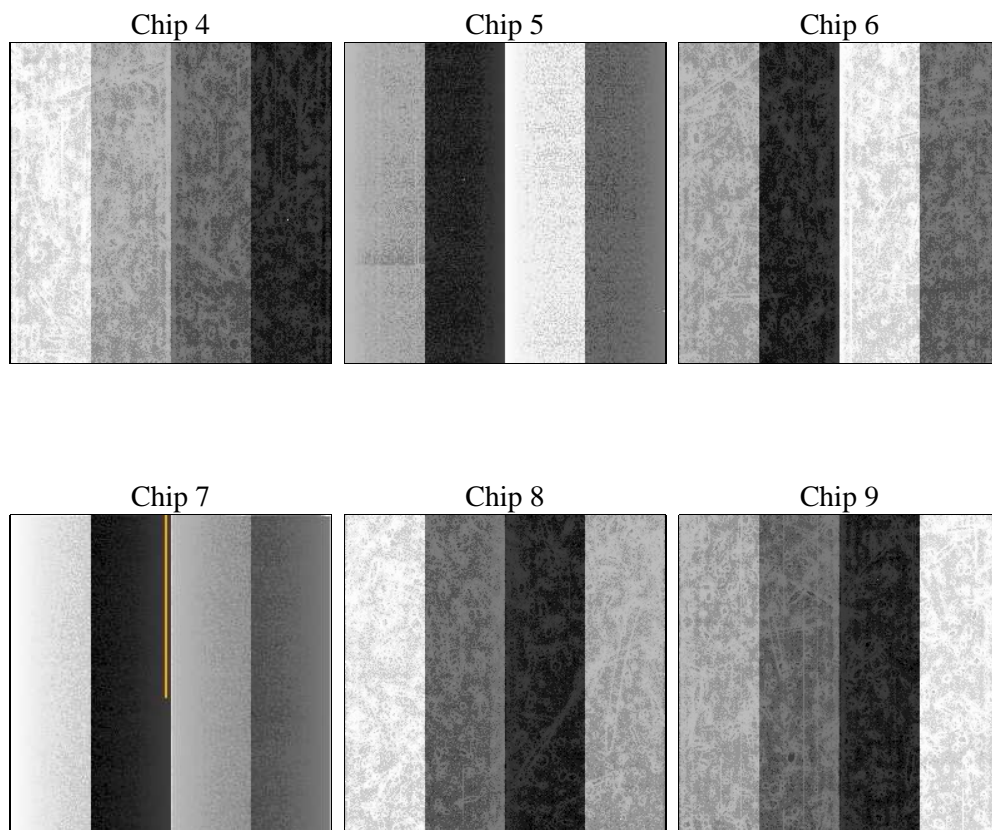
2 OBI

2.1 OBI

2.1.1 Images



2.1.2 Bias



2.1.3 Parameters

obi_num	0	Obi number	sched_exp_time	6000.066000	[s] Scheduled observation exposure time
ascdsver	8.4.3	Processing system revision	ontime	6050.9940863252	Sum of GTIs [s]
caldsver	4.4.8	 	ontime4	6051.0351263285	Sum of GTIs [s]
date	2012-02-19T23:40:43	Date and time of file creation	ontime5	6050.9530463219	Sum of GTIs [s]
revision	2	Processing version of data	ontime6	6050.9120063186	Sum of GTIs [s]
			ontime7	6050.9940863252	Sum of GTIs [s]
			ontime8	6050.8709663153	Sum of GTIs [s]
			ontime9	6050.829926312	Sum of GTIs [s]
			l1events	280944	Number of level 1 events

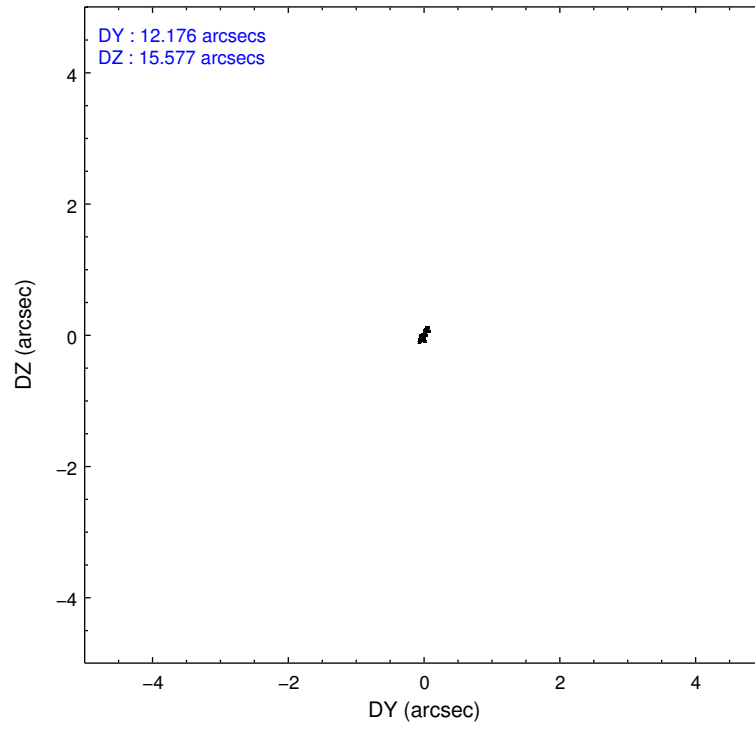
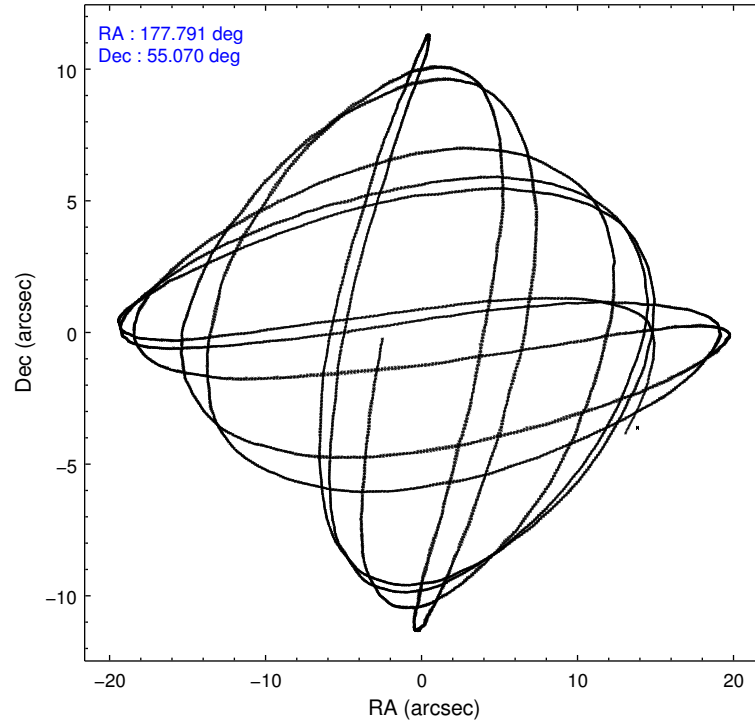
2.1.4 Events

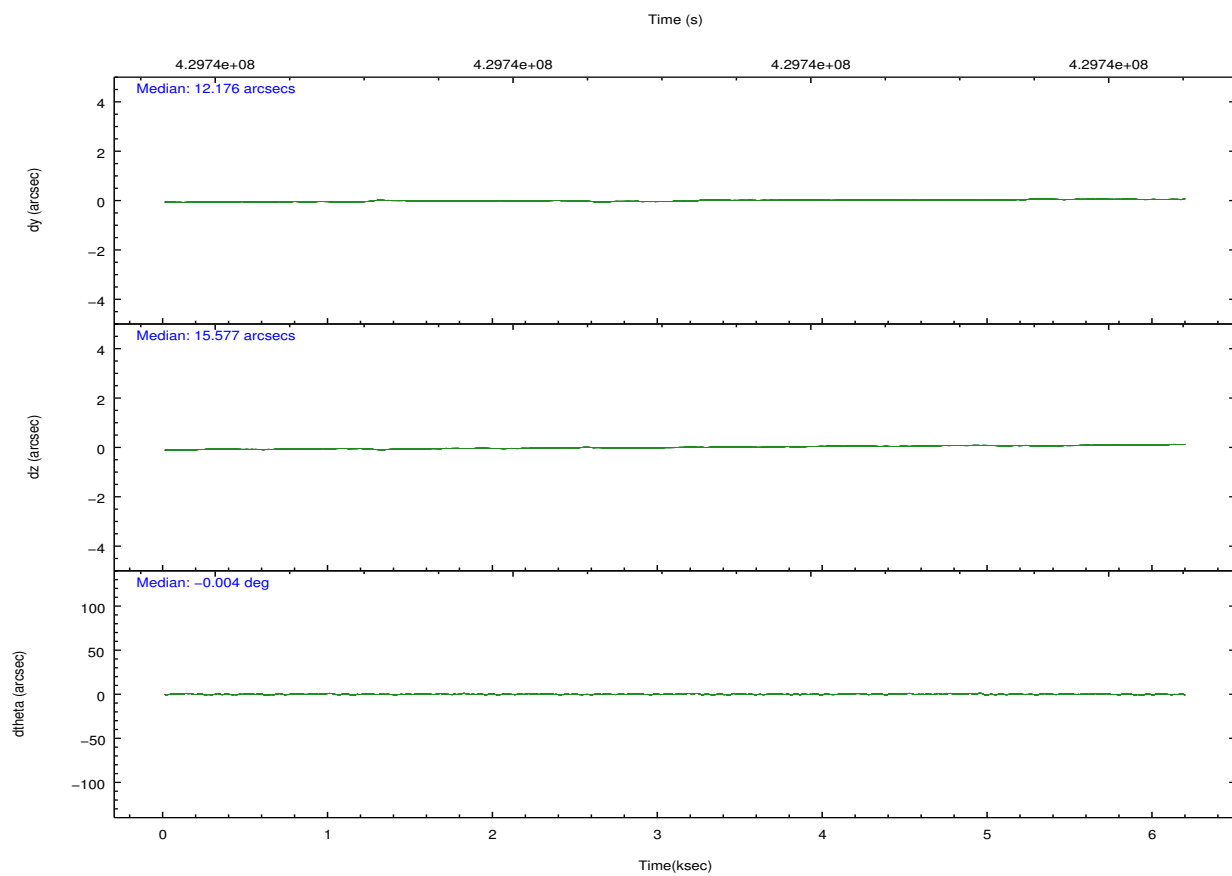
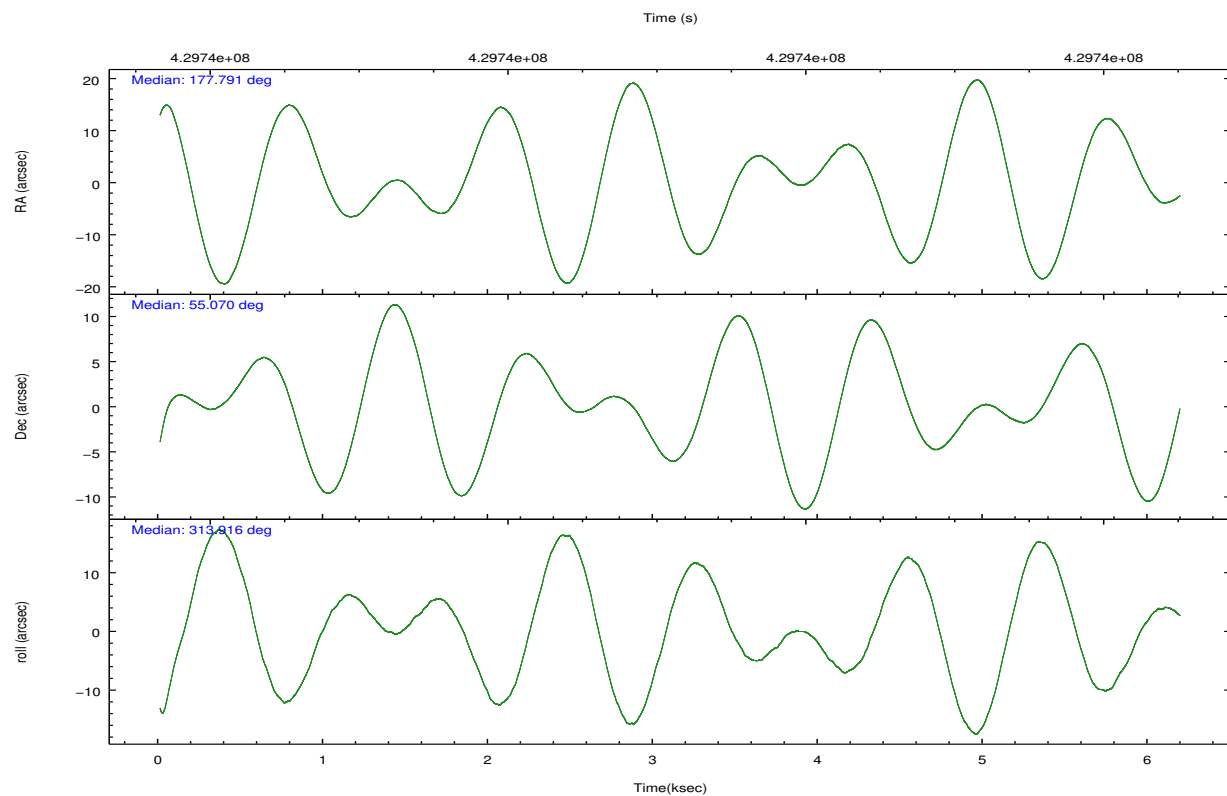
	ccd 4	ccd 5	ccd 6	ccd 7	ccd 8	ccd 9		ccd 4	ccd 5	ccd 6	ccd 7	ccd 8	ccd 9
level 1 events	43570	61640	38574	49105	50273	37782	grade 0 events	3011	4401	1556	2220	4051	1734
rejected events	37719	30329	34099	26641	37204	33028		6%	7%	4%	4%	8%	4%
rejected %	86%	49%	88%	54%	74%	87%	grade 1 events	41	167	13	64	32	24
								0%	0%	0%	0%	0%	0%
							grade 2 events	1133	9203	1003	4654	3016	1073
								2%	14%	2%	9%	5%	2%
							grade 3 events	471	1080	458	1944	1378	504
								1%	1%	1%	3%	2%	1%
							grade 4 events	464	1107	457	2017	1258	453
								1%	1%	1%	4%	2%	1%
							grade 5 events	1820	4564	1783	4970	2651	1961
								4%	7%	4%	10%	5%	5%
							grade 6 events	776	15560	1005	11655	3375	992
								1%	25%	2%	23%	6%	2%
							grade 7 events	35854	25558	32299	21581	34512	31041
								82%	41%	83%	43%	68%	82%

2.2 Compared Parameters

Parameter	Planned	Actual	Parameter	Planned	Actual
Instrument	ACIS	ACIS	Obspar format version number	7	7
Detector	ACIS-456789	ACIS-456789	Obspar file type	PREDICTED	ACTUAL
Grating	NONE	NONE	Obspar update status	NONE	UPDATED
Data mode	VFAINT	VFAINT	CCD I0 on	N	N
Observation mode	POINTING	POINTING	CCD I1 on	N	N
[deg] Pointing RA	177.745460	177.7915226244262	CCD I2 on	N	N
[deg] Pointing Dec	55.077117	55.06985551656218	CCD I3 on	N	N
[deg] Pointing Roll	313.798663	313.9174992989534	CCD S0 on	O5	Y
[mm] SIM focus pos	-0.684267	-0.6828225247311905	CCD S1 on	O4	Y
[mm] SIM defocus	0	0.001444936568705701	CCD S2 on	O1	Y
[mm] SIM translation stage pos	-190.132523	-190.1425803651734	CCD S3 on	Y	Y
[mm] SIM translation stage offset	0	0.01005778216563158	CCD S4 on	O2	Y
[s] Observation start time (MET)	429738184.184000	429737155.72615	CCD S5 on	O3	Y
Observation start date	2011-08-14T19:41:58	2011-08-14T19:25:55	Number of optional ACIS chips dropped	0	0
[s] Observation end time (MET)	429744184.184000	429744409.65153	On-chip summing requested	N	N
Observation end date	2011-08-14T21:21:58	2011-08-14T21:26:49	Subarray requested	NONE	NONE
Read mode	TIMED	TIMED	Alternating exposures requested	N	N
			[s] Primary exposure time	0.000000	3.2

2.3 Aspect



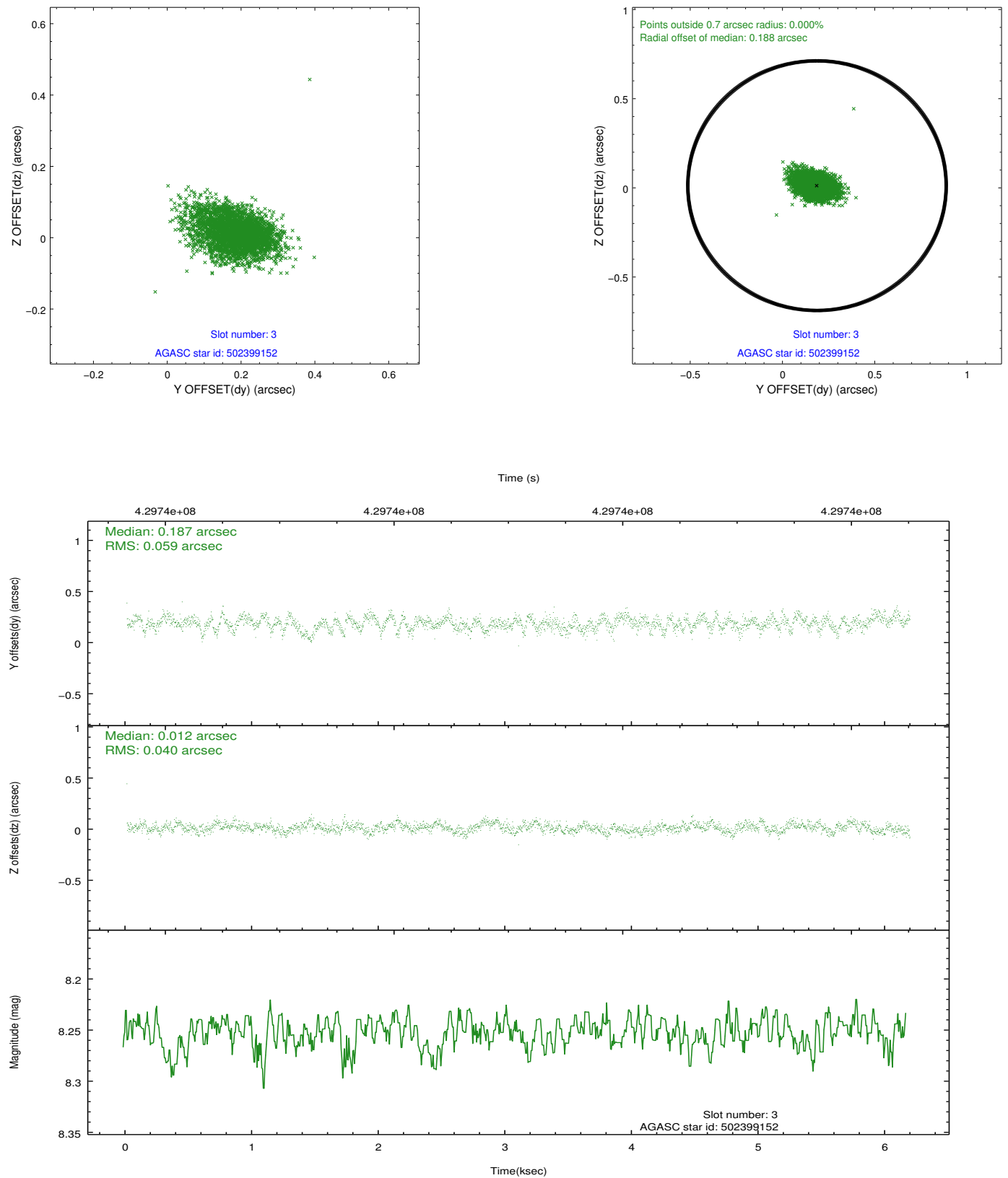


Slot Statistics

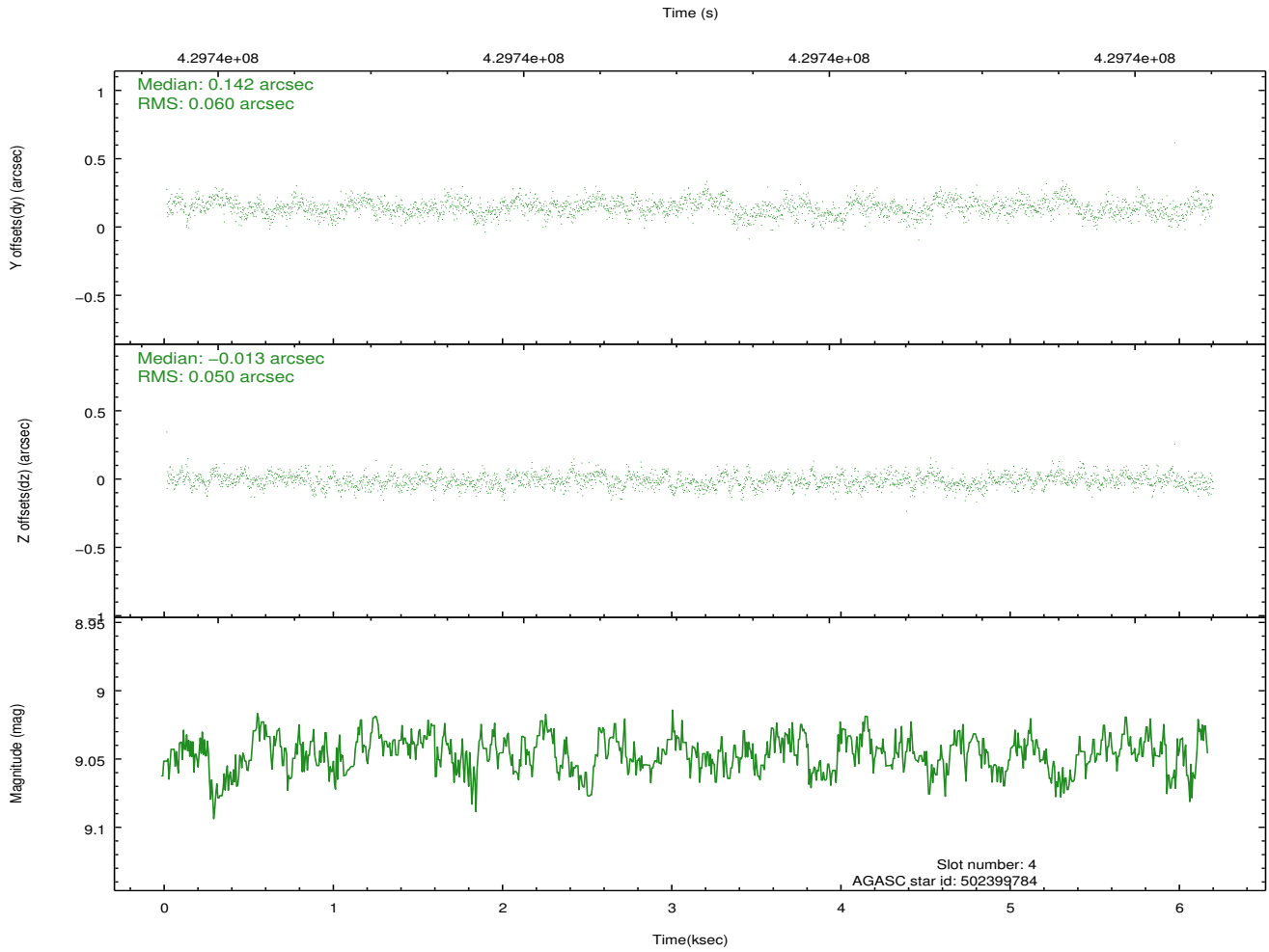
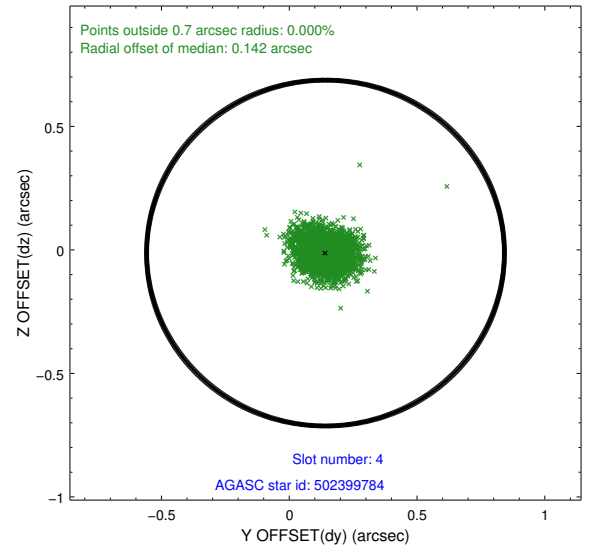
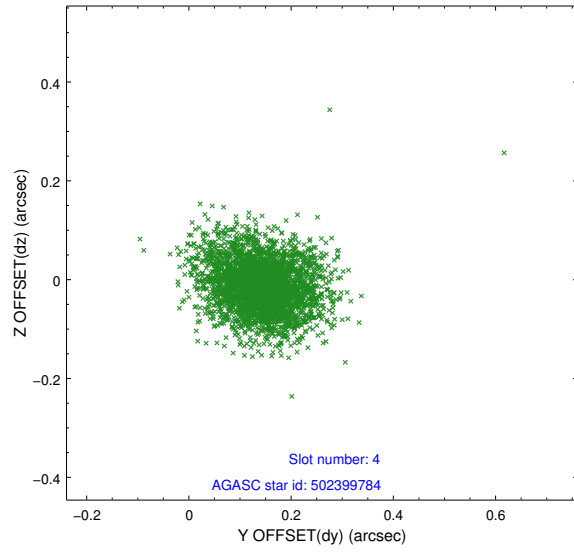
slot	status	id	mag	n_pts	med_dy	med_dz	dr1	dr2	ra	dec	mean_y	mean_z
0	FID	ACIS-S-2	6.91	1509	-0.079	-0.052	0.005	0.010	0.000000	0.000000	-765.15	-1736.97
1	FID	ACIS-S-4	7.00	1509	0.134	0.020	0.005	0.009	0.000000	0.000000	2147.91	170.58
2	FID	ACIS-S-6	7.12	1509	-0.083	0.039	0.006	0.010	0.000000	0.000000	398.06	809.09
3	GUIDE	502399152	8.25	3018	0.187	0.012	0.074	0.128	177.865329	54.295287	2206.18	-1765.70
4	GUIDE	502399784	9.05	3018	0.142	-0.013	0.081	0.135	177.868784	54.539177	1576.58	-1154.75
5	GUIDE	502661768	7.71	3018	-0.434	0.119	0.078	0.130	177.146660	55.540024	-2050.52	276.71
6	GUIDE	502400568	8.66	3013	0.081	-0.122	0.084	0.132	178.868651	54.779372	2373.41	954.60
7	GUIDE	502669520	8.00	3016	0.025	0.014	0.066	0.103	176.602956	55.341551	-2318.69	-1015.44

2.4 Star Slots

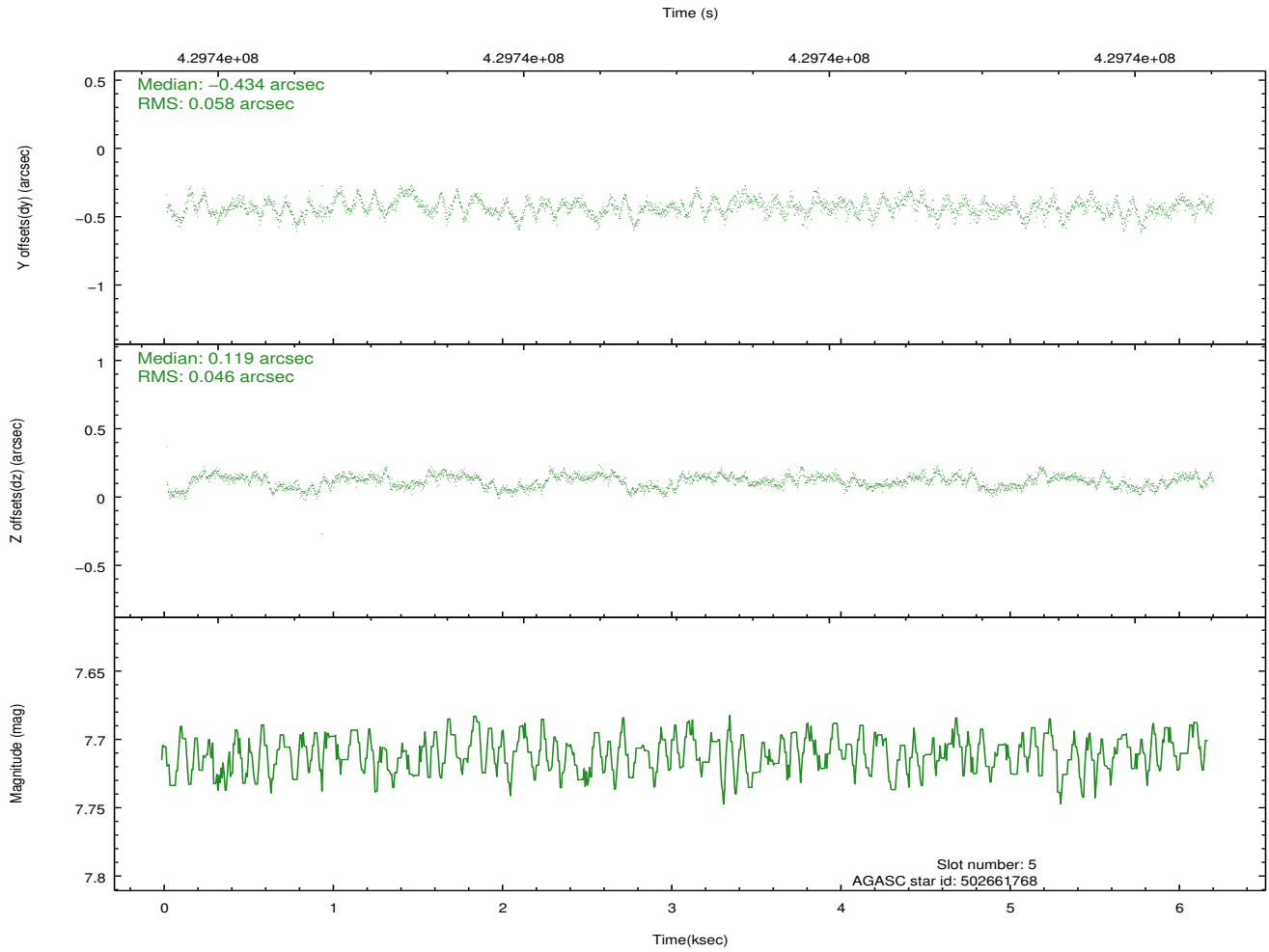
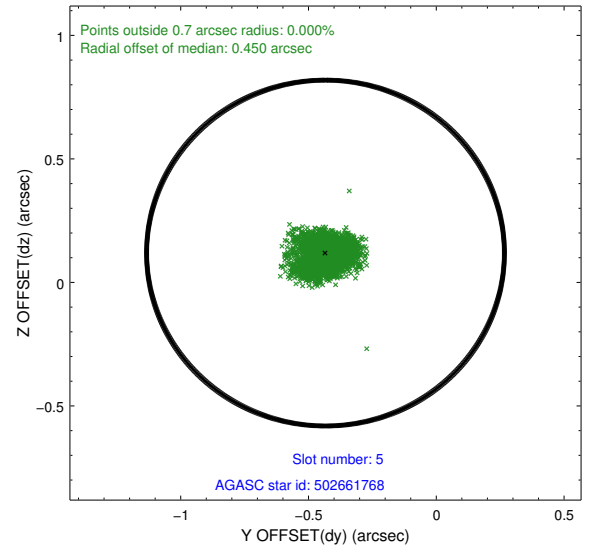
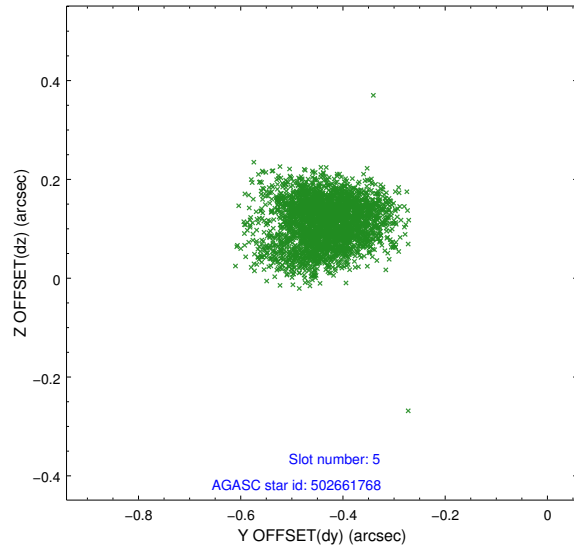
2.4.1 Slot 3



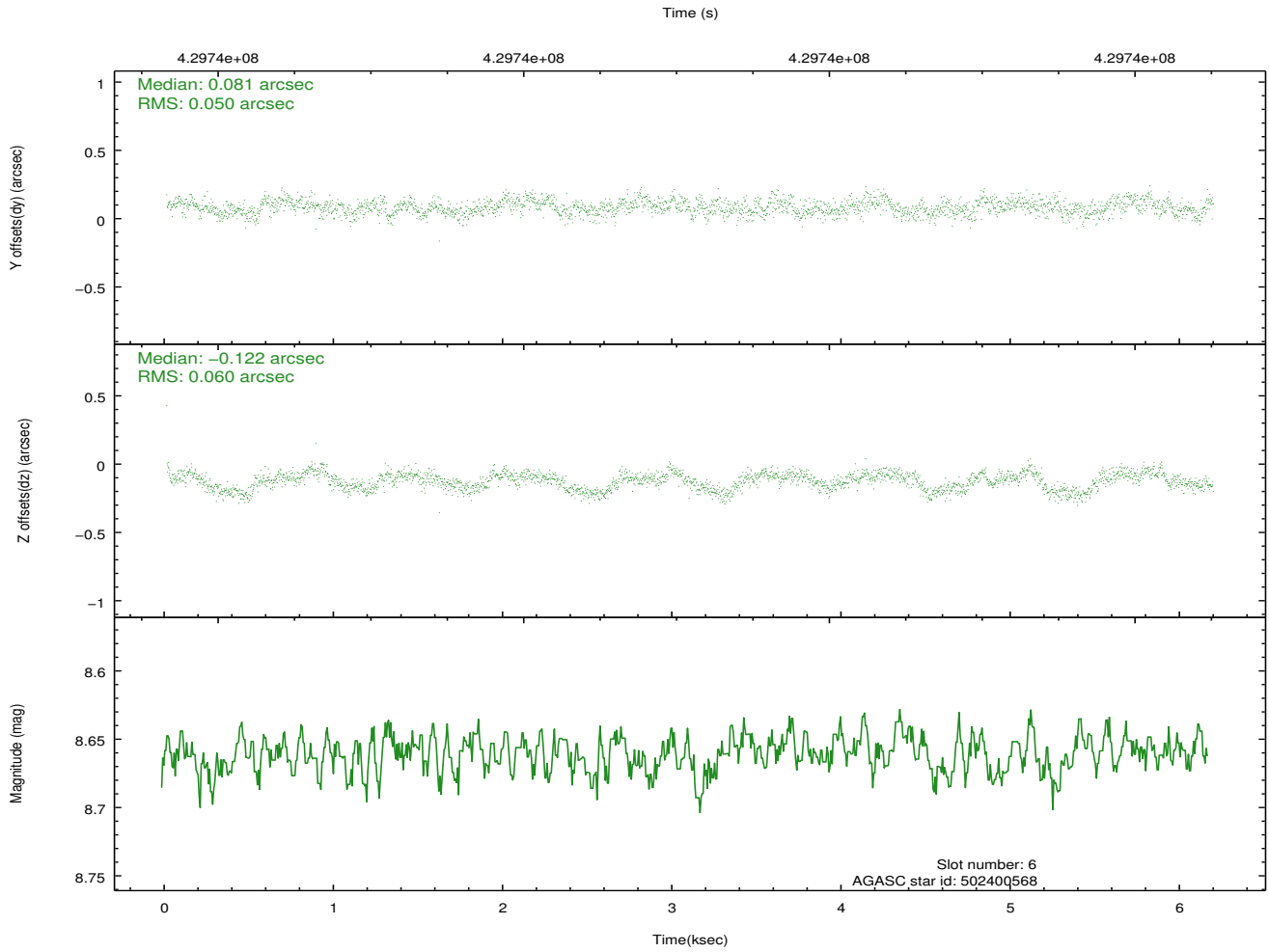
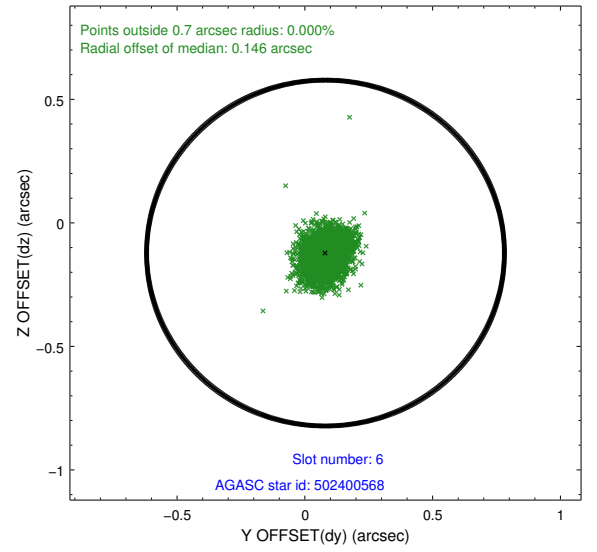
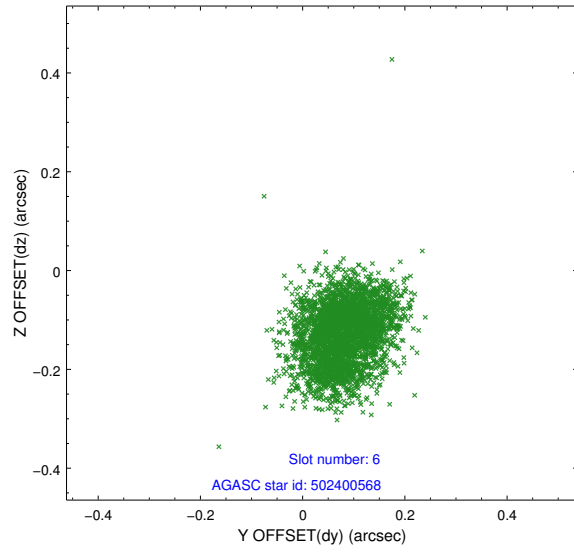
2.4.2 Slot 4



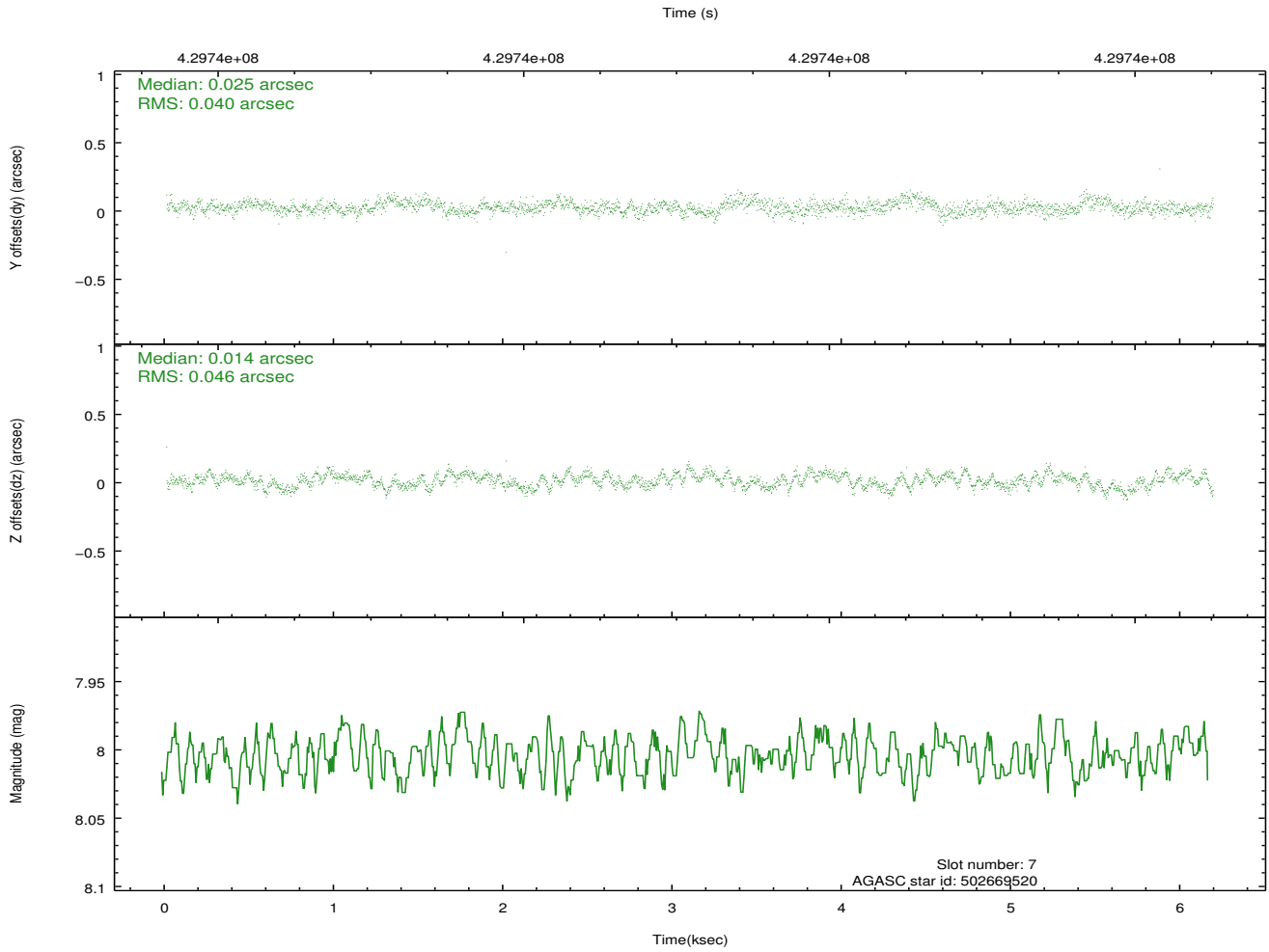
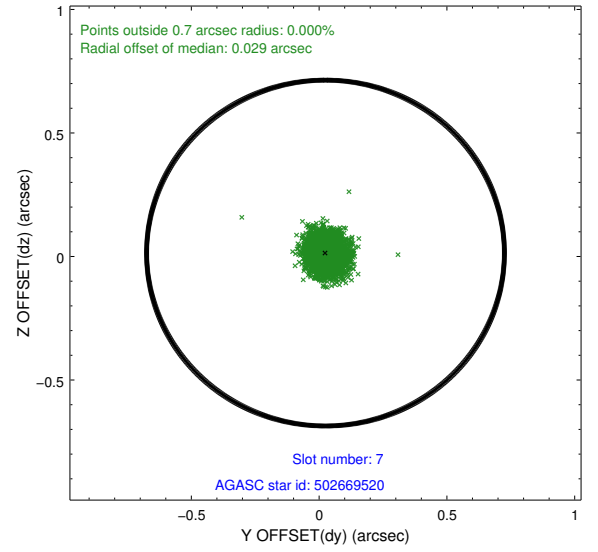
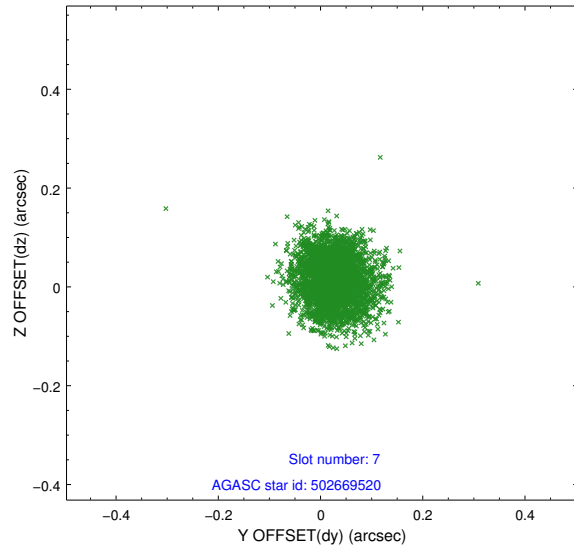
2.4.3 Slot 5



2.4.4 Slot 6

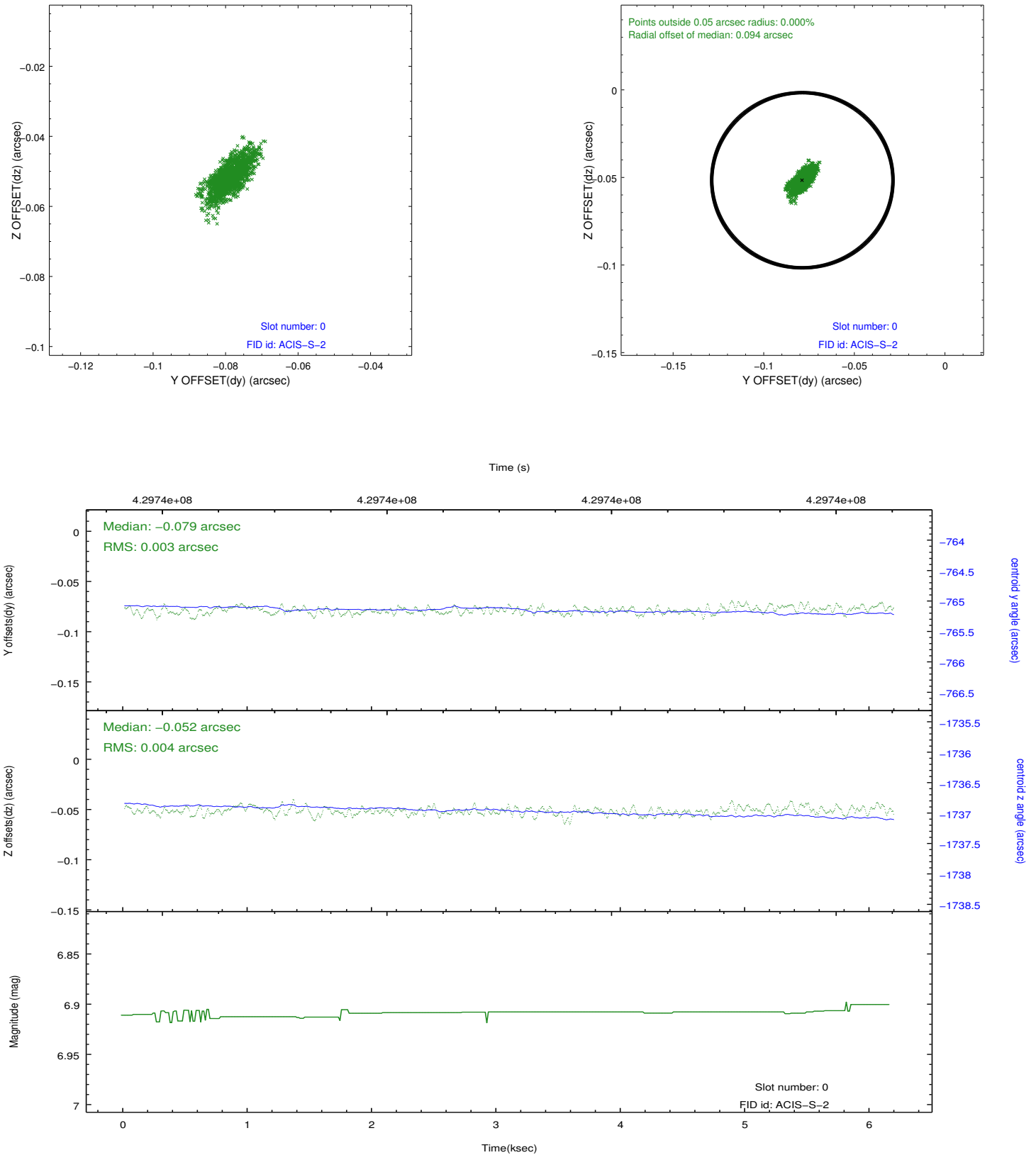


2.4.5 Slot 7

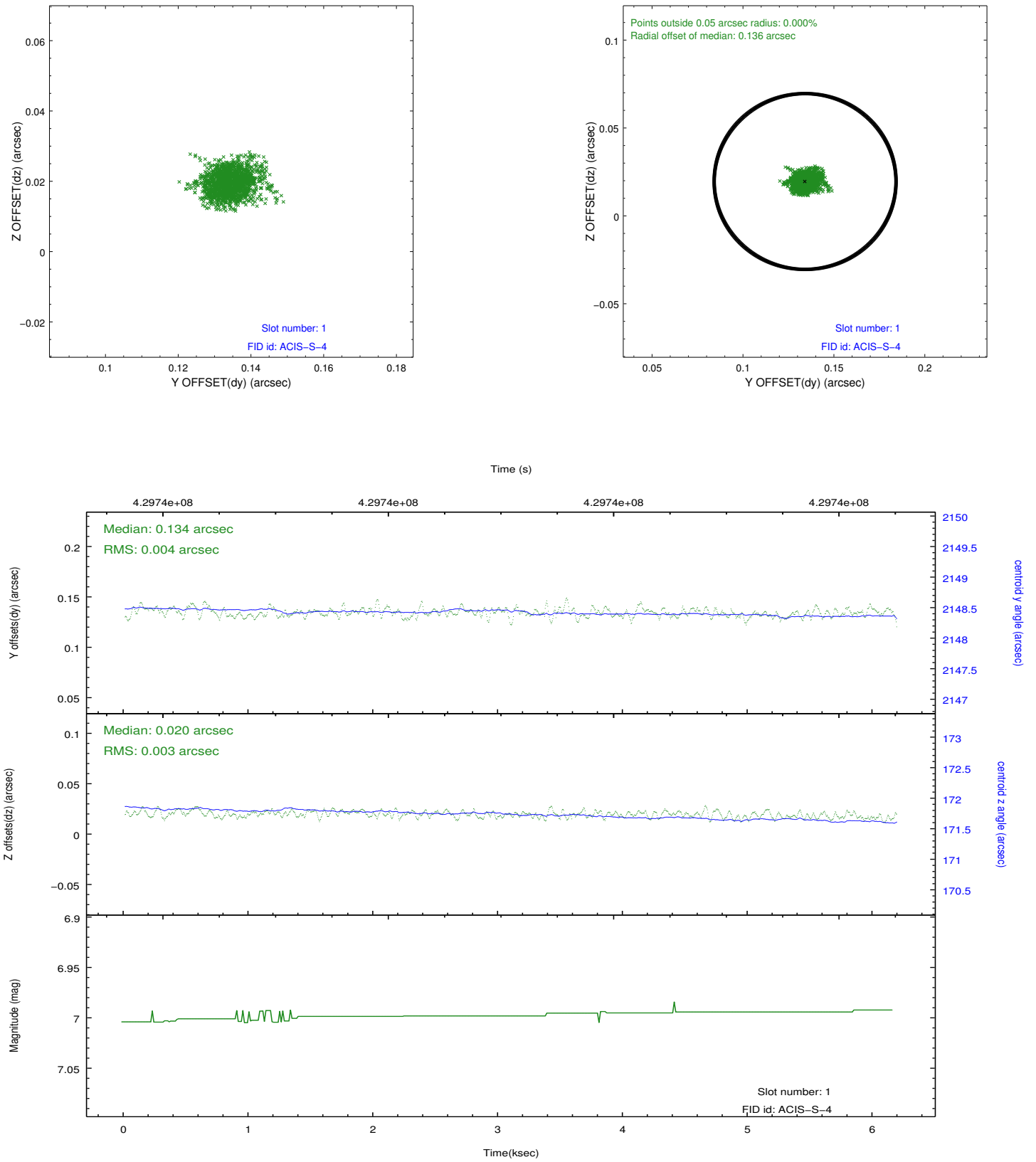


2.5 FID Slots

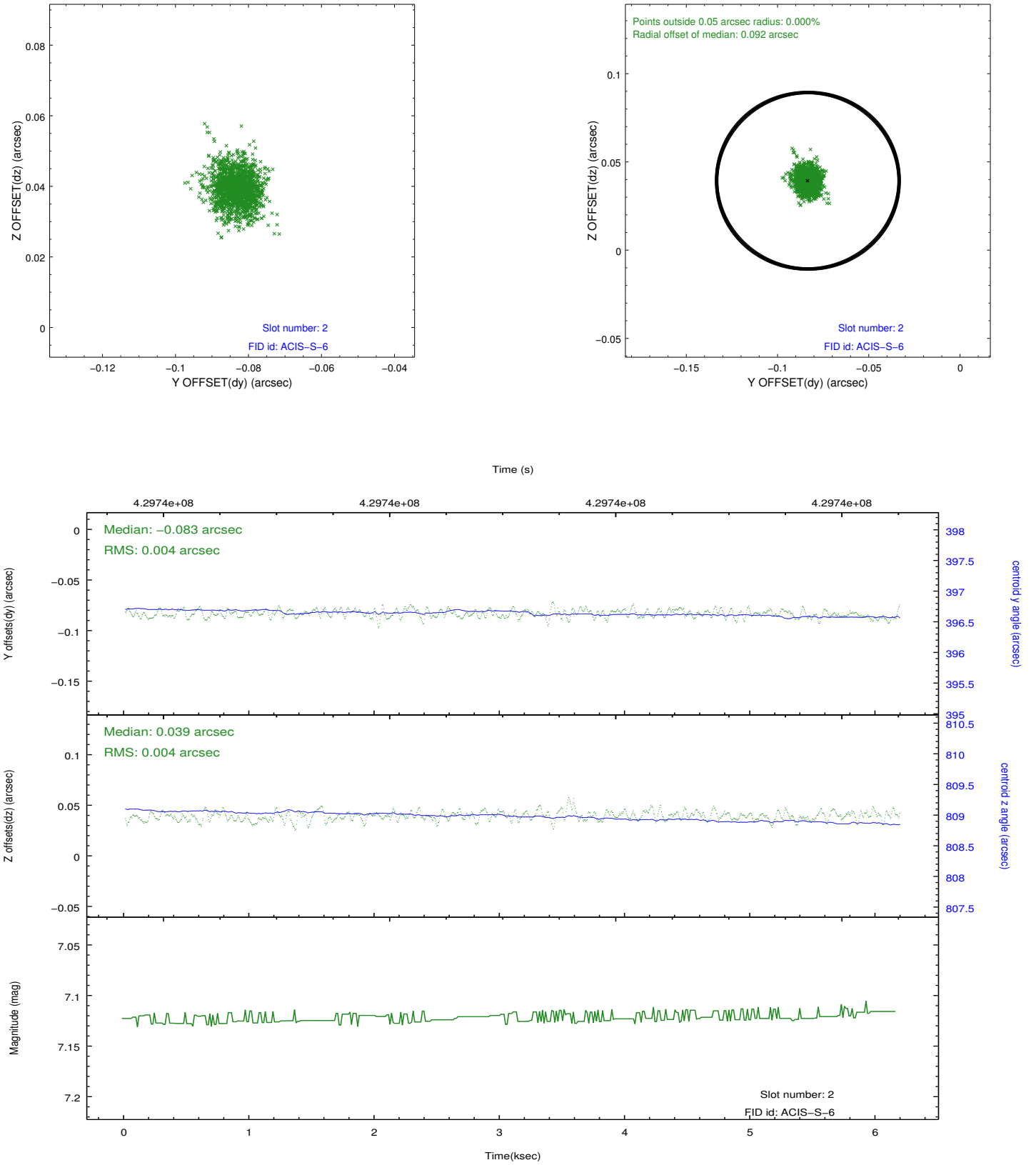
2.5.1 Slot 0



2.5.2 Slot 1



2.5.3 Slot 2



A Summary

A.1 Status

V&V Scientist	Jen Lauer
V&V Date (YYYY-MM-DD)	2012.02.21
V&V Edition	1
V&V Disposition and Status	OK
V&V Charge Time	6.0509940786958

A.2 Comments