

V&V Reference Report

L2 ASCDS Version : 8.4.3

Observation 12526 - L2 Version 3
Chandra X-Ray Center

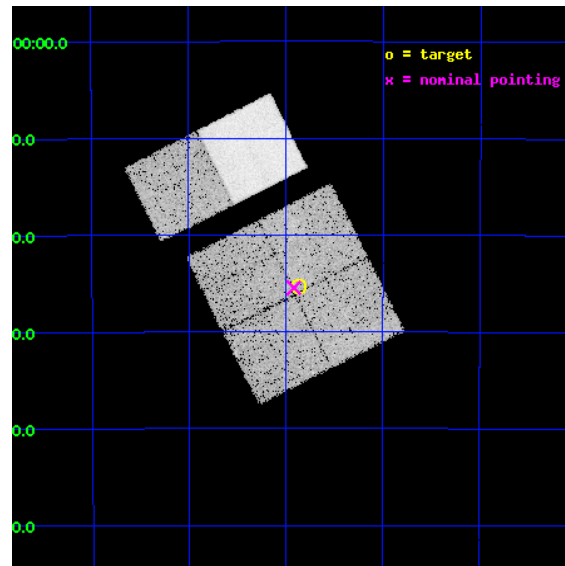
L2 Processing Date : Feb 12 2012

Contents

1	Front	2
2	OBI	3
2.1	OBI	3
2.1.1	Images	3
2.1.2	Bias	3
2.1.3	Parameters	4
2.1.4	Events	4
2.2	Compared Parameters	5
2.3	Aspect	6
2.4	Star Slots	9
2.4.1	Slot 3	9
2.4.2	Slot 4	10
2.4.3	Slot 5	11
2.4.4	Slot 6	12
2.4.5	Slot 7	13
2.5	FID Slots	14
2.5.1	Slot 0	14
2.5.2	Slot 1	15
2.5.3	Slot 2	16
A	Summary	17
A.1	Status	17
A.2	Comments	17

1 Front

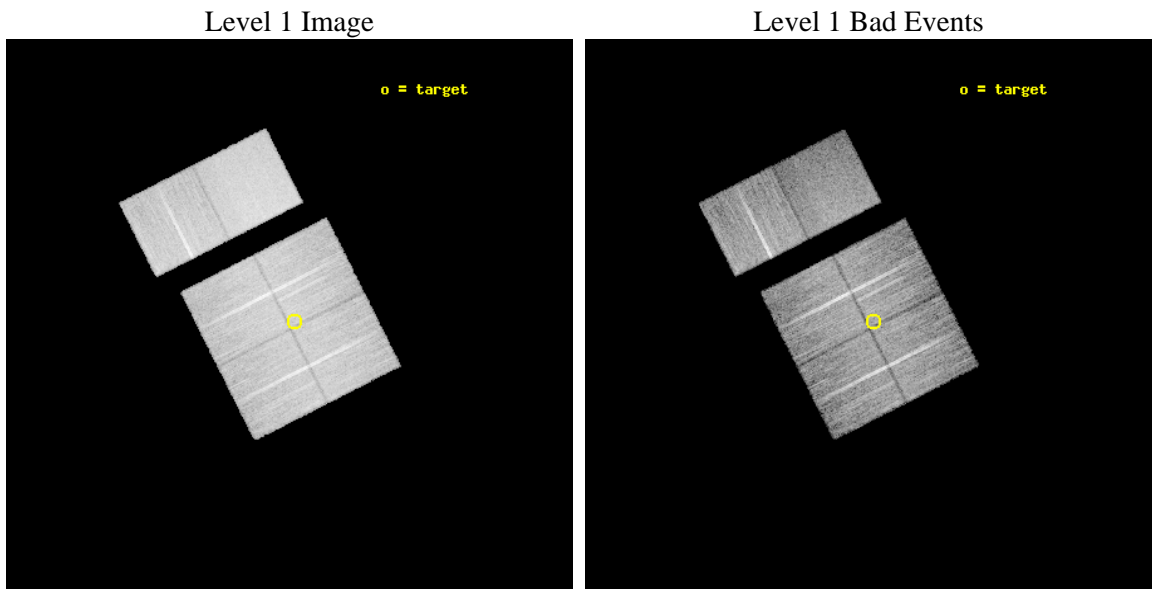
seq_num	401267	Sequence number
obs_id	12526	Observation id
title	Census of the Normal Spiral Arm Region	Proposal title
observer	Dr. John Tomsick	Principal investigator
object	Norma Region	Source name
dtcycle	0	
cycle	P	events from which exps? Prim/Second/Both
ra_targ	248.967679	Observer's specified target RA [deg]
dec_targ	-47.423141	Observer's specified target Dec [deg]
ra_nom	248.97941745744	Nominal RA [deg]
dec_nom	-47.424467652655	Nominal Dec [deg]
roll_nom	333.21733166272	Nominal Roll [deg]
revision	3	Processing version of data
ontime	19267.199928284	Sum of GTIs [s]
livetime	19023.227041477	Livetime [s]
ontime0	19267.199928284	Sum of GTIs [s]
ontime1	19267.199928284	Sum of GTIs [s]
ontime2	19263.958867967	Sum of GTIs [s]
ontime3	19267.199928284	Sum of GTIs [s]
ontime6	19267.199928284	Sum of GTIs [s]
ontime7	19267.199928284	Sum of GTIs [s]
l2events	131337	Number of level 2 events



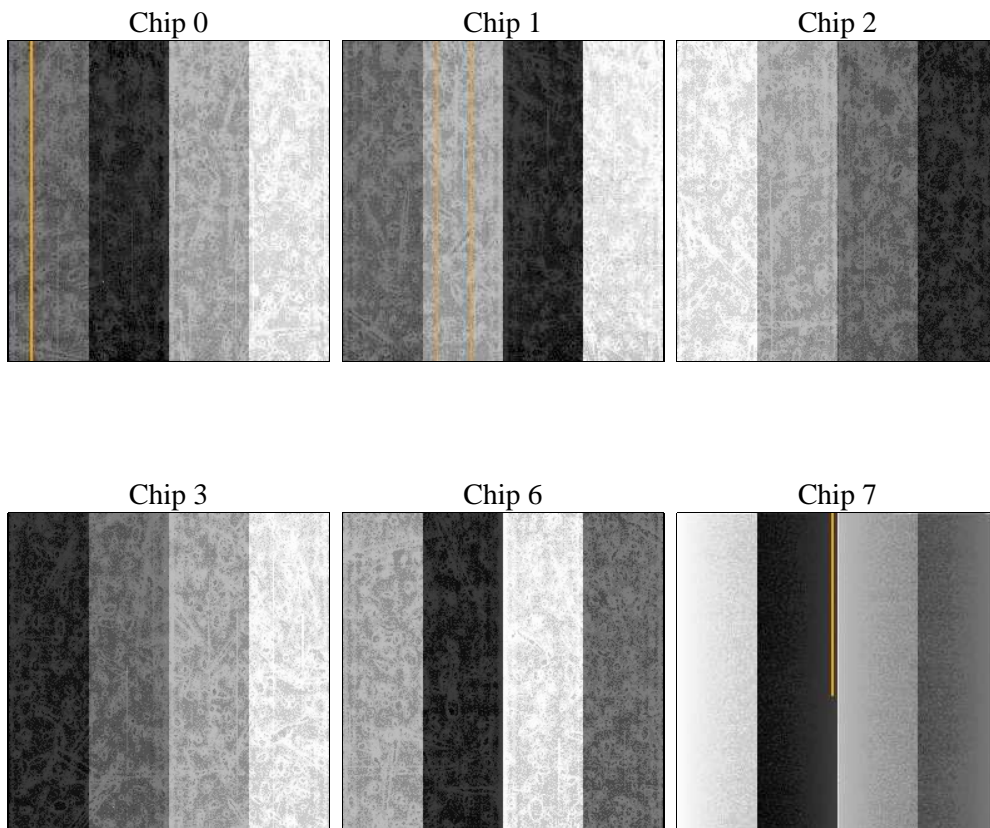
2 OBI

2.1 OBI

2.1.1 Images



2.1.2 Bias



2.1.3 Parameters

obi_num	0	Obi number	sched_exp_time	19506.613000	[s] Scheduled observation exposure time
ascdsver	8.4.3	Processing system revision	ontime	19267.199928284	Sum of GTIs [s]
caldsver	4.4.7	 	ontime0	19267.199928284	Sum of GTIs [s]
date	2012-02-12T11:21:41	Date and time of file creation	ontime1	19267.199928284	Sum of GTIs [s]
revision	3	Processing version of data	ontime2	19263.958867967	Sum of GTIs [s]
			ontime3	19267.199928284	Sum of GTIs [s]
			ontime6	19267.199928284	Sum of GTIs [s]
			ontime7	19267.199928284	Sum of GTIs [s]
			l1events	741997	Number of level 1 events

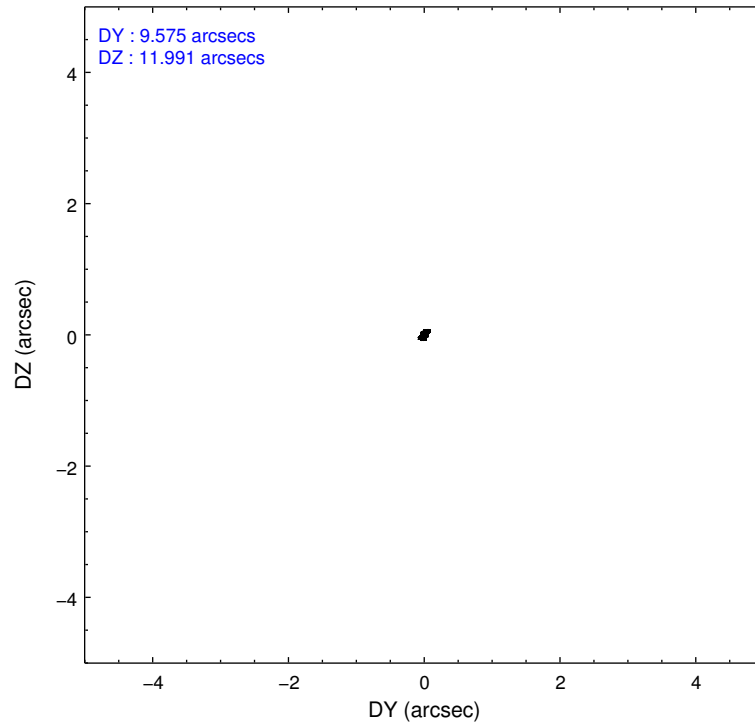
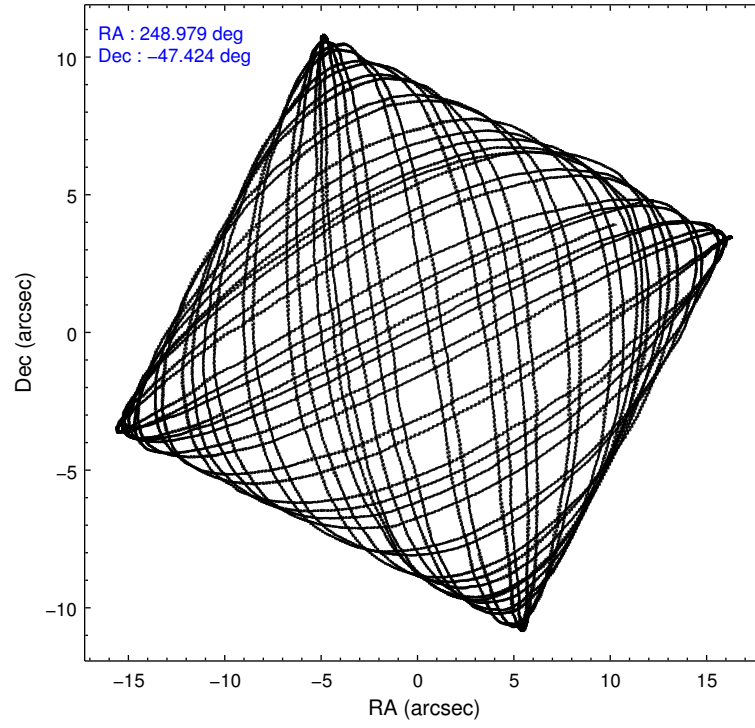
2.1.4 Events

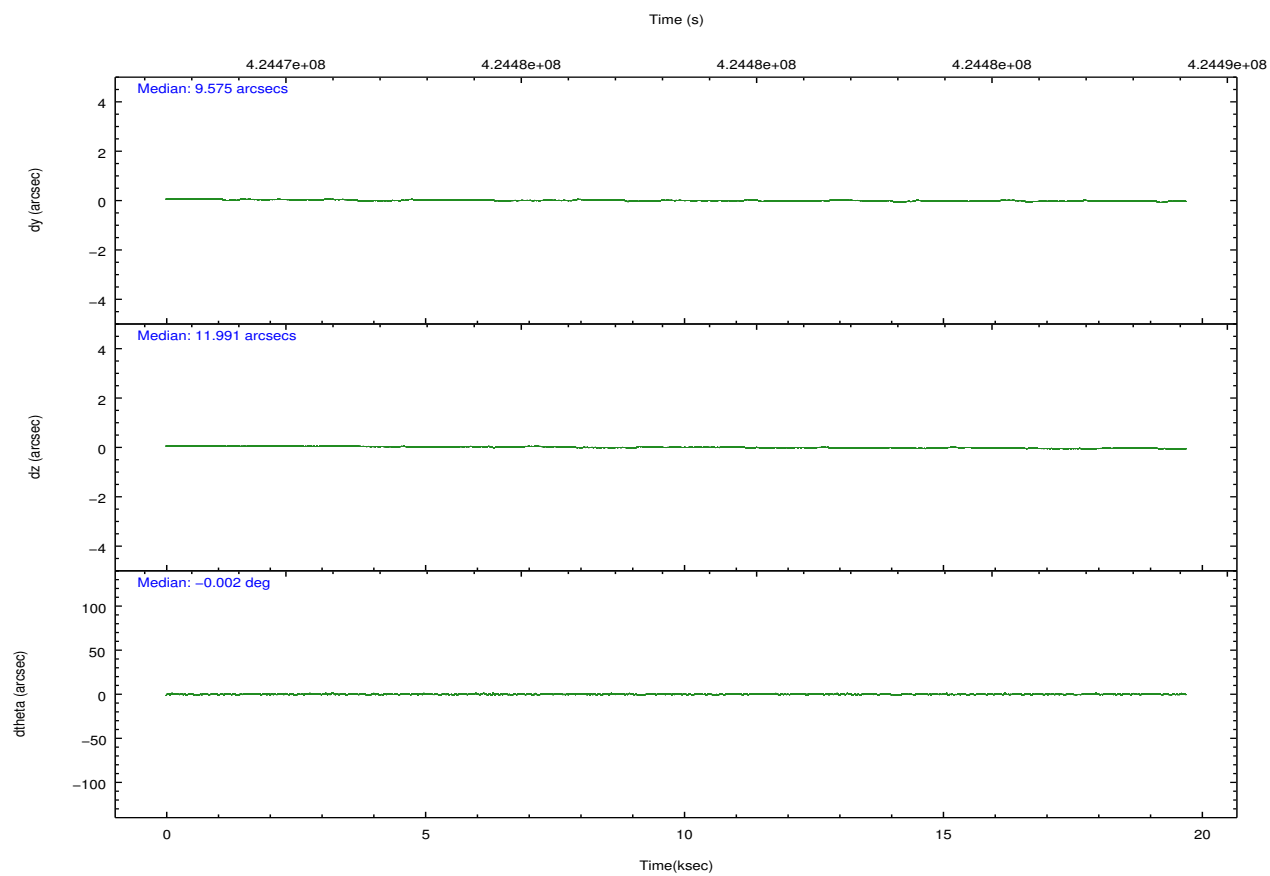
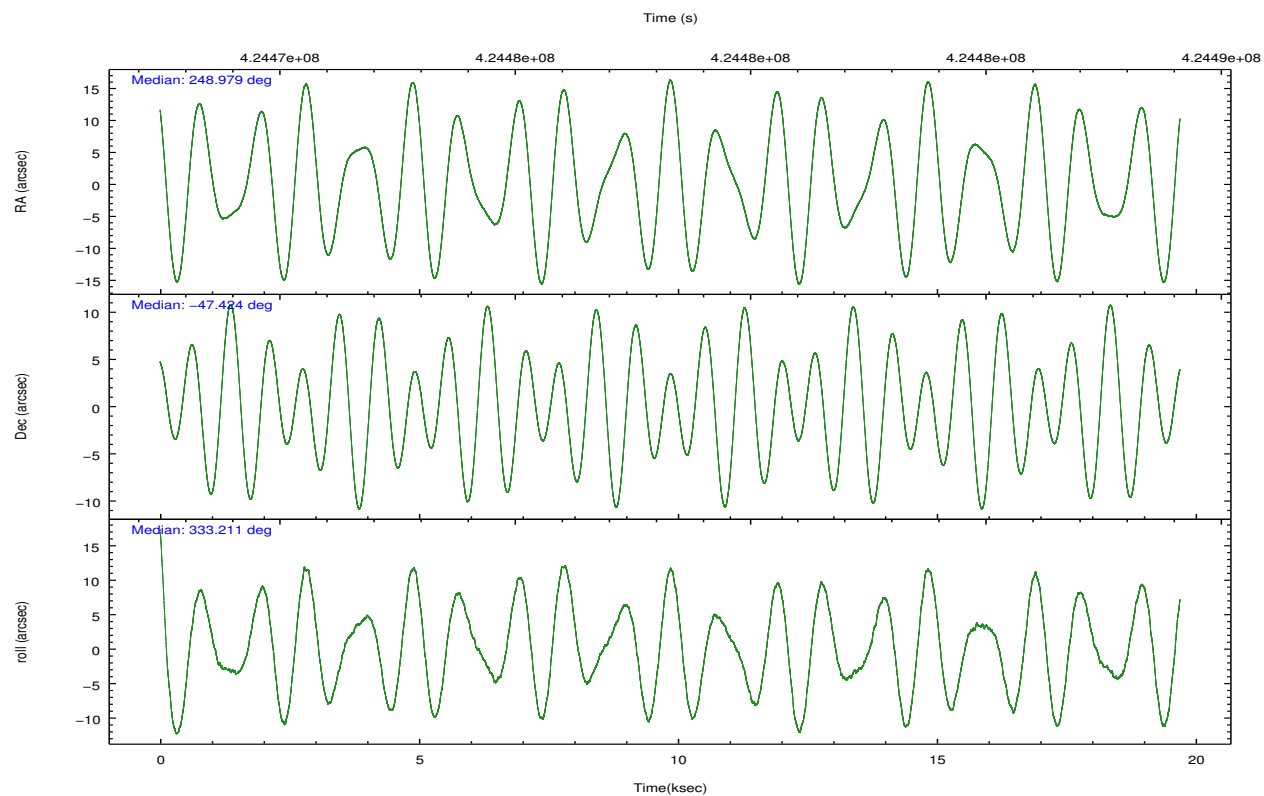
	ccd 0	ccd 1	ccd 2	ccd 3	ccd 6	ccd 7		ccd 0	ccd 1	ccd 2	ccd 3	ccd 6	ccd 7
level 1 events	110760	113995	120396	117790	124850	154206	grade 0 events	5517	6224	5555	6020	5328	6017
rejected events	96234	97744	106450	102910	109978	84695		4%	5%	4%	5%	4%	3%
rejected %	86%	85%	88%	87%	88%	54%	grade 1 events	73	62	72	84	58	155
								0%	0%	0%	0%	0%	0%
							grade 2 events	3344	3522	3198	3077	3277	14431
								3%	3%	2%	2%	2%	9%
							grade 3 events	1533	1578	1325	1522	1458	6106
								1%	1%	1%	1%	1%	3%
							grade 4 events	1366	1512	1371	1488	1408	5933
								1%	1%	1%	1%	1%	3%
							grade 5 events	5060	5294	4619	5734	5872	15495
								4%	4%	3%	4%	4%	10%
							grade 6 events	2769	3416	2499	2775	3402	37036
								2%	2%	2%	2%	2%	24%
							grade 7 events	91098	92387	101757	97090	104047	69033
								82%	81%	84%	82%	83%	44%

2.2 Compared Parameters

Parameter	Planned	Actual	Parameter	Planned	Actual
Instrument	ACIS	ACIS	Obspar format version number	7	7
Detector	ACIS-012367	ACIS-012367	Obspar file type	PREDICTED	ACTUAL
Grating	NONE	NONE	Obspar update status	NONE	UPDATED
Data mode	VFAINT	VFAINT	CCD I0 on	Y	Y
Observation mode	POINTING	POINTING	CCD I1 on	Y	Y
[deg] Pointing RA	248.938899	248.9794174574394	CCD I2 on	Y	Y
[deg] Pointing Dec	-47.426118	-47.42446765265471	CCD I3 on	Y	Y
[deg] Pointing Roll	332.978803	333.217331662723	CCD S0 on	N	N
[mm] SIM focus pos	-0.782348	-0.7809083437167272	CCD S1 on	N	N
[mm] SIM defocus	0	0.001439871863259334	CCD S2 on	O2	Y
[mm] SIM translation stage pos	-233.592463	-233.5899487761303	CCD S3 on	O1	Y
[mm] SIM translation stage offset	0	-0.002504226799430853	CCD S4 on	N	N
[s] Observation start time (MET)	424468625.184000	424468248.38573	CCD S5 on	N	N
Observation start date	2011-06-14T19:55:59	2011-06-14T19:50:48	Number of optional ACIS chips dropped	0	0
[s] Observation end time (MET)	424488131.184000	424488368.62428	On-chip summing requested	N	N
Observation end date	2011-06-15T01:21:05	2011-06-15T01:26:08	Subarray requested	NONE	NONE
Read mode	TIMED	TIMED	Alternating exposures requested	N	N
			[s] Primary exposure time	0.000000	3.2

2.3 Aspect



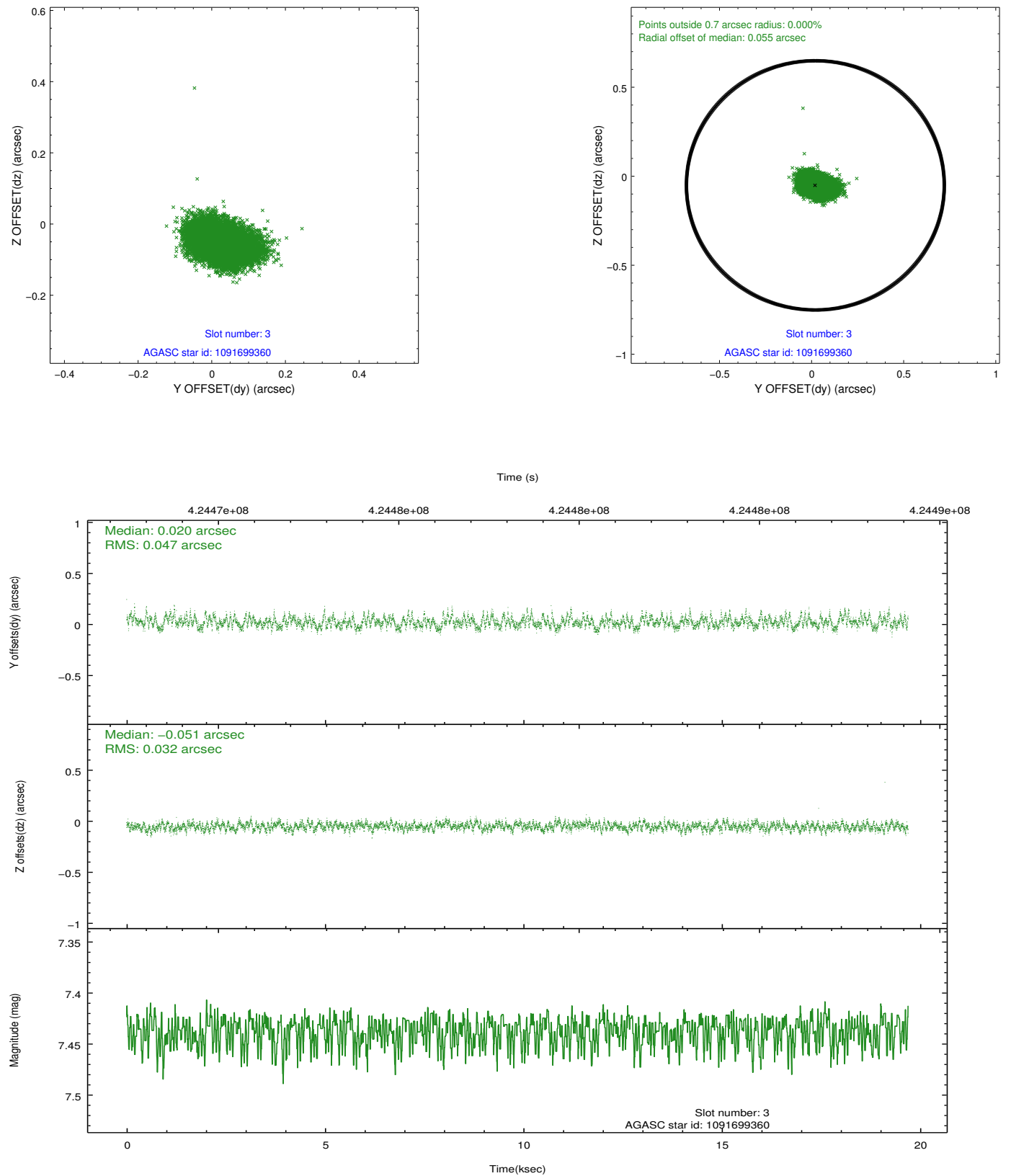


Slot Statistics

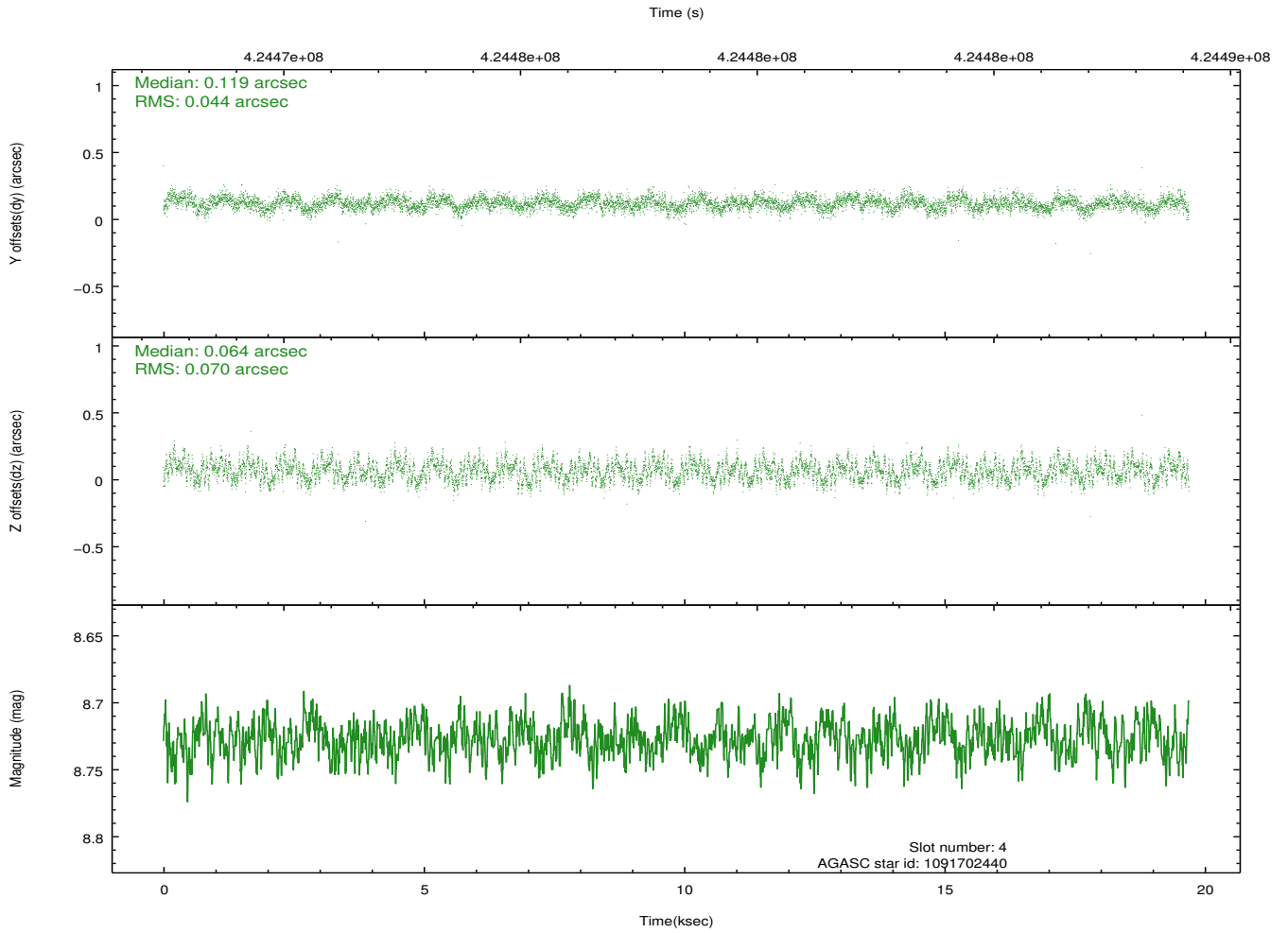
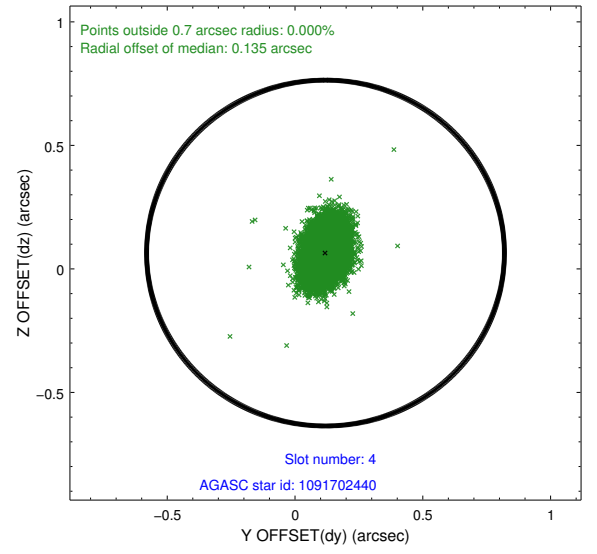
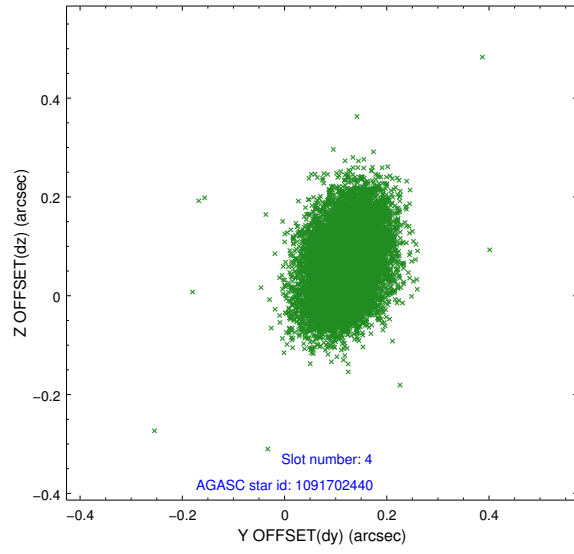
slot	status	id	mag	n_pts	med_dy	med_dz	dr1	dr2	ra	dec	mean_y	mean_z
0	FID	ACIS-I-1	7.17	4804	0.107	-0.073	0.007	0.014	0.000000	0.000000	930.13	-835.54
1	FID	ACIS-I-5	7.15	4803	-0.249	0.095	0.006	0.012	0.000000	0.000000	-1818.22	1062.03
2	FID	ACIS-I-6	7.16	4803	0.051	0.048	0.007	0.013	0.000000	0.000000	395.42	1706.70
3	GUIDE	1091699360	7.44	9608	0.020	-0.051	0.060	0.097	248.660725	-47.004364	-1297.25	1041.25
4	GUIDE	1091702440	8.73	9604	0.119	0.064	0.088	0.141	248.295809	-47.683380	-964.17	-1538.88
5	GUIDE	1091705016	7.82	9604	-0.184	-0.198	0.045	0.074	249.888030	-47.558250	2276.71	611.40
6	GUIDE	1091705224	9.20	9602	-0.003	0.086	0.091	0.147	248.613211	-47.940846	143.80	-2008.88
7	GUIDE	1091709768	7.70	9606	0.045	0.101	0.057	0.090	249.435228	-47.706899	1532.86	-357.60

2.4 Star Slots

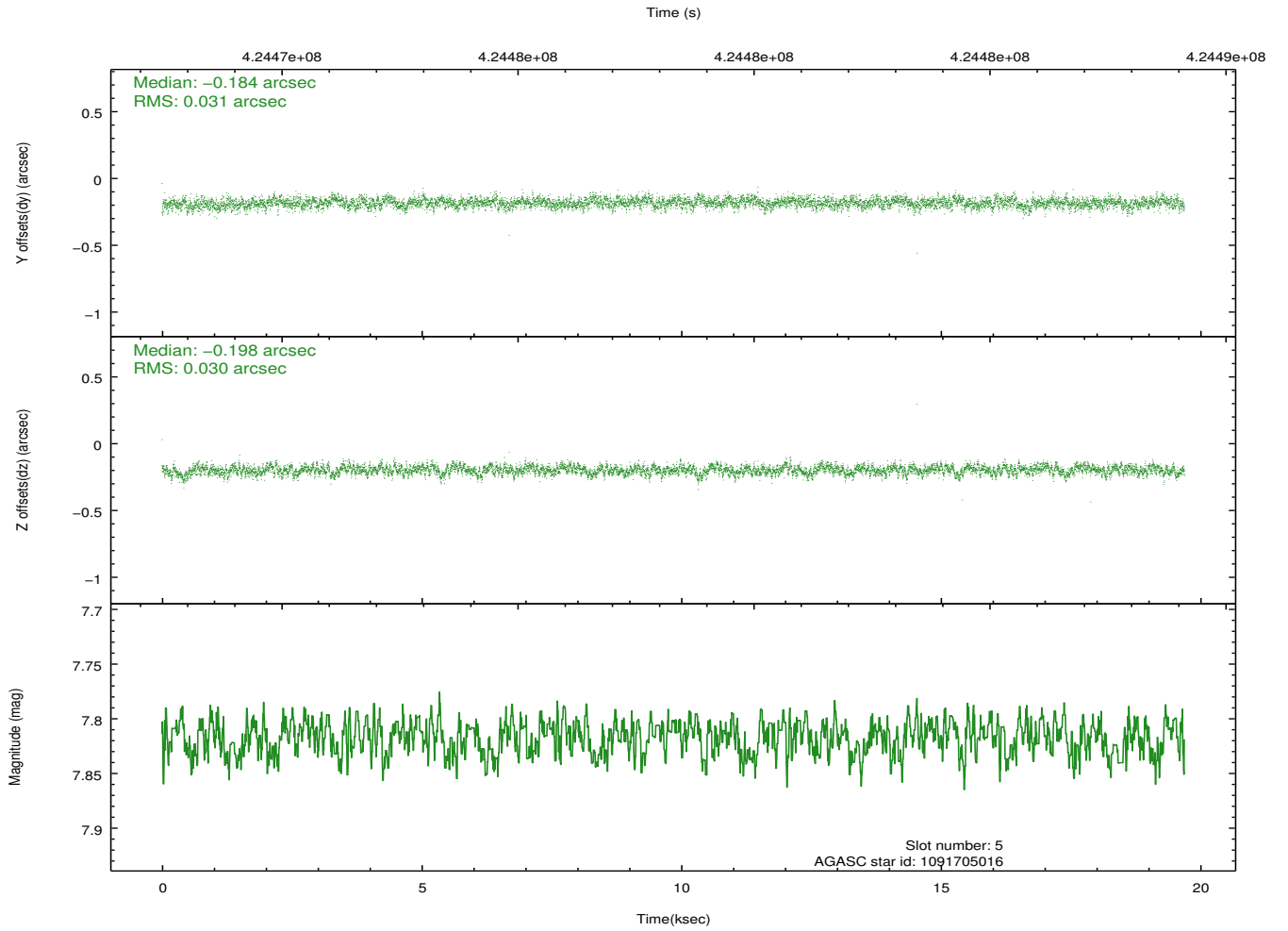
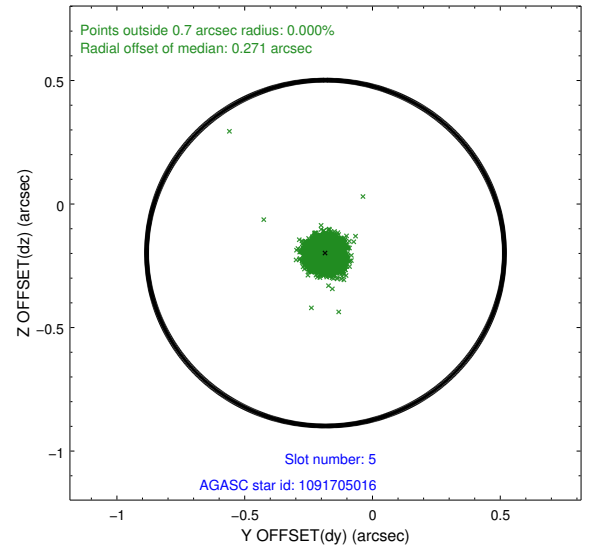
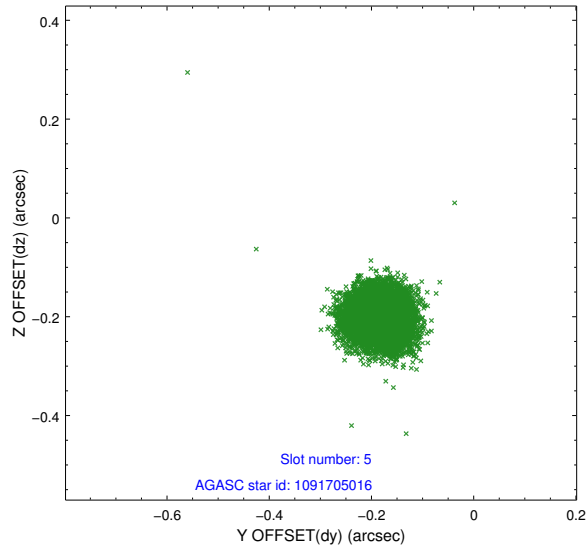
2.4.1 Slot 3



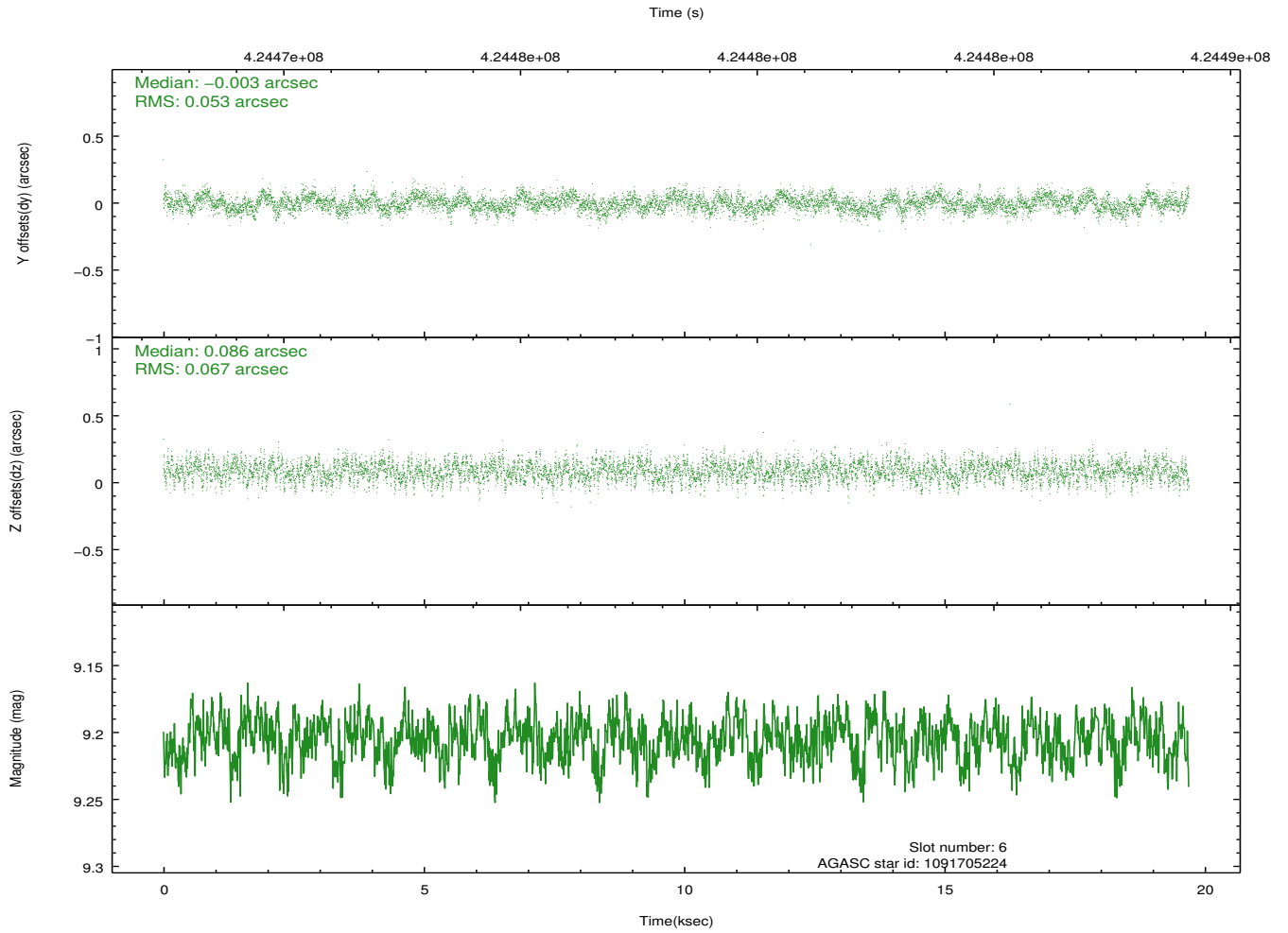
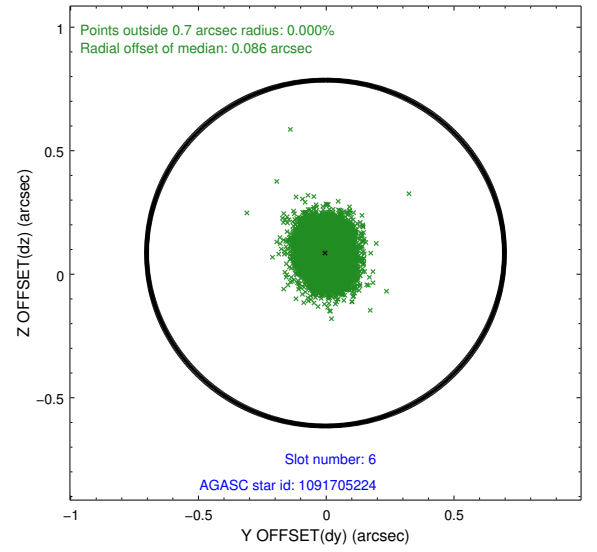
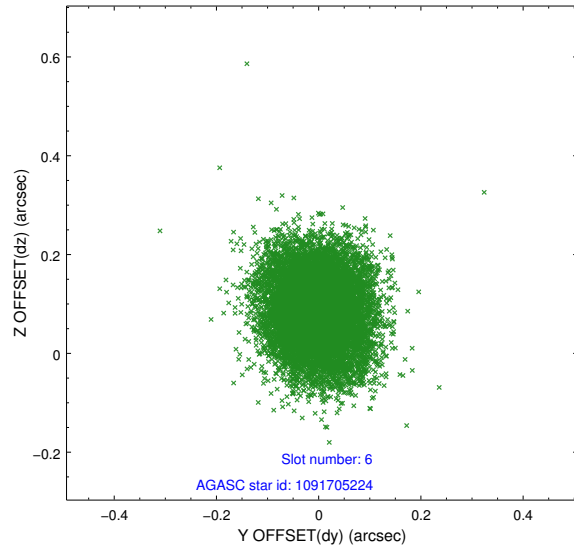
2.4.2 Slot 4



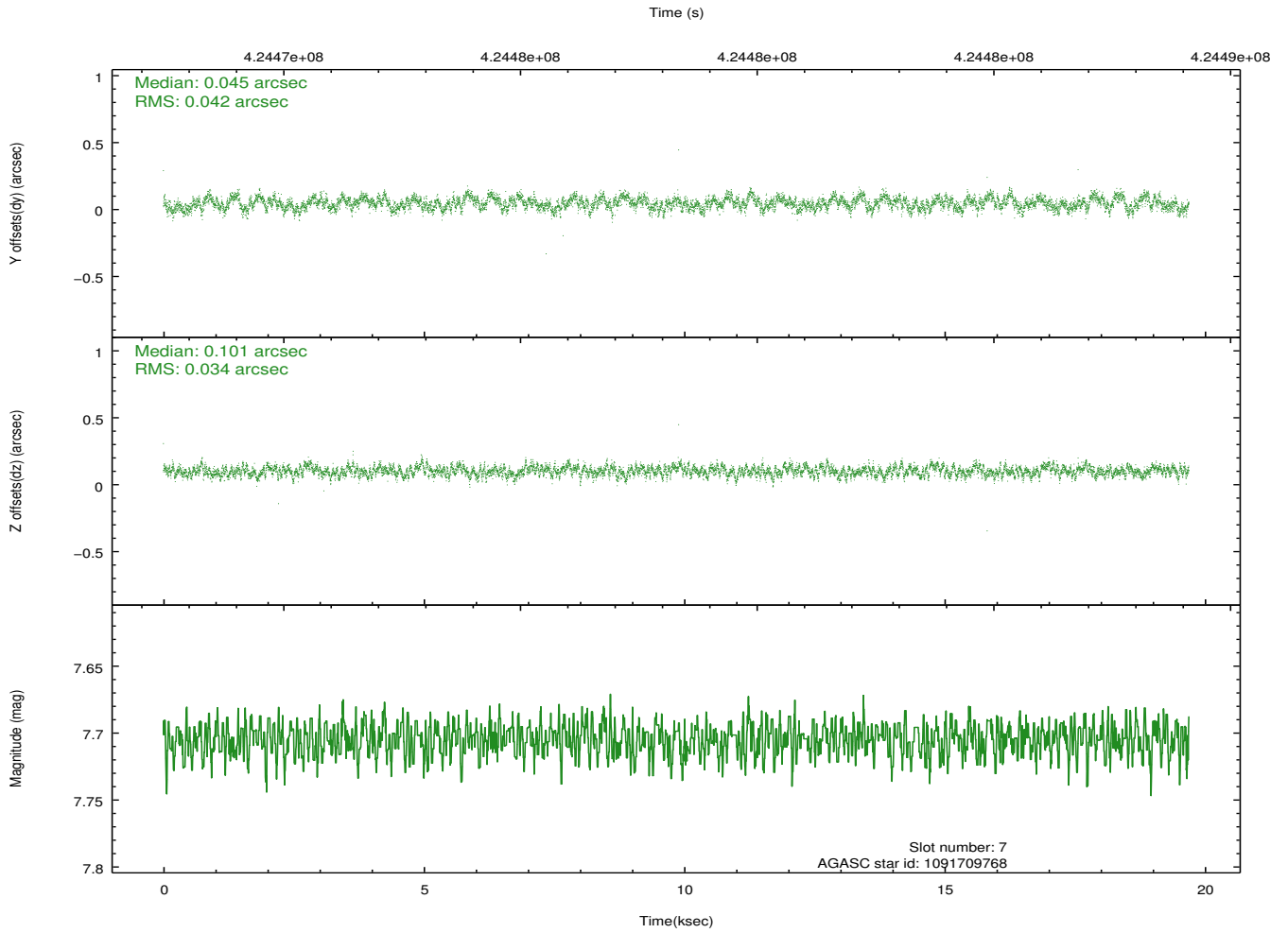
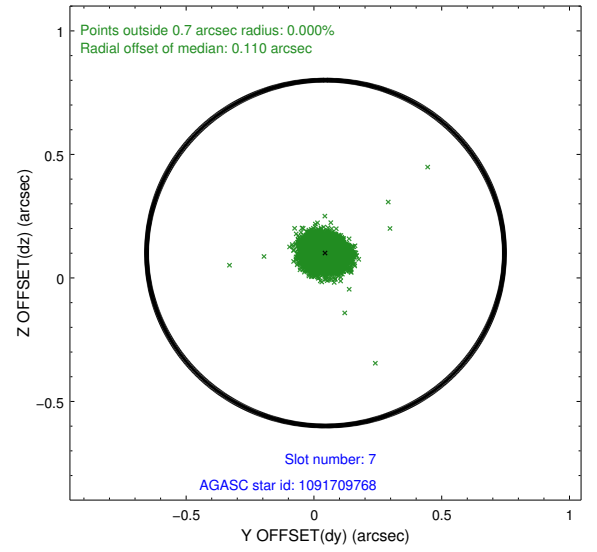
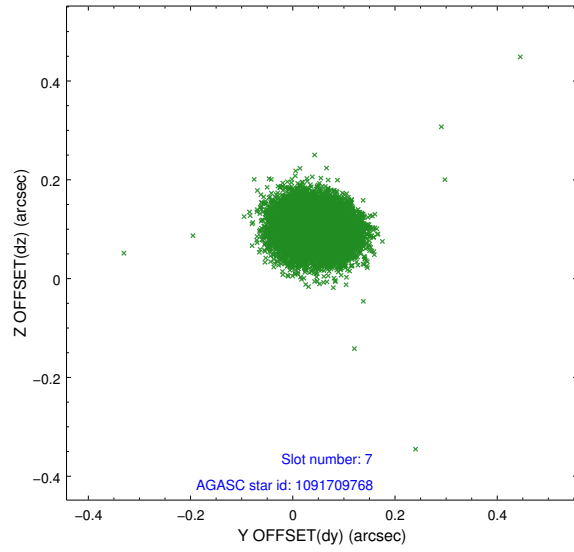
2.4.3 Slot 5



2.4.4 Slot 6

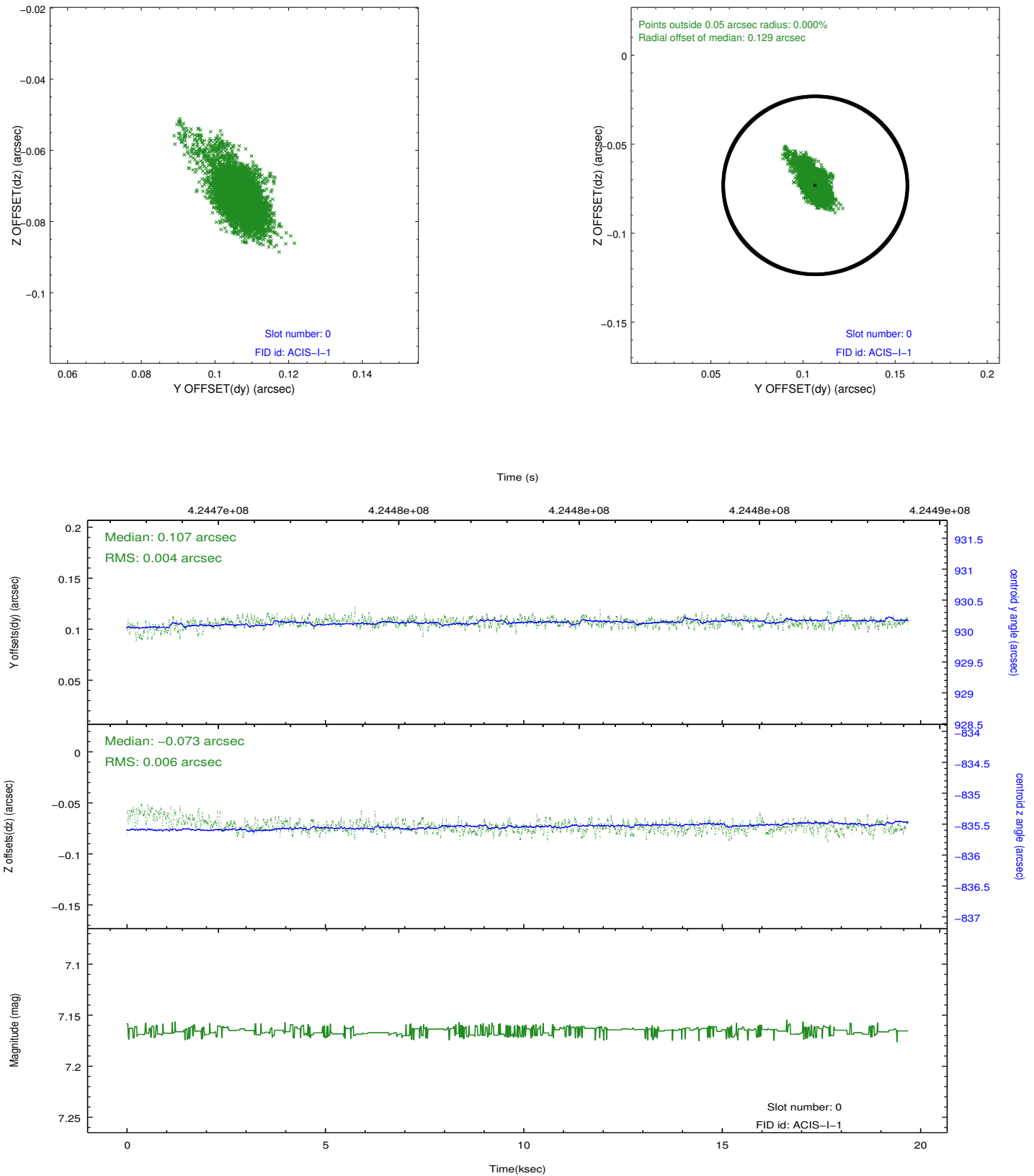


2.4.5 Slot 7

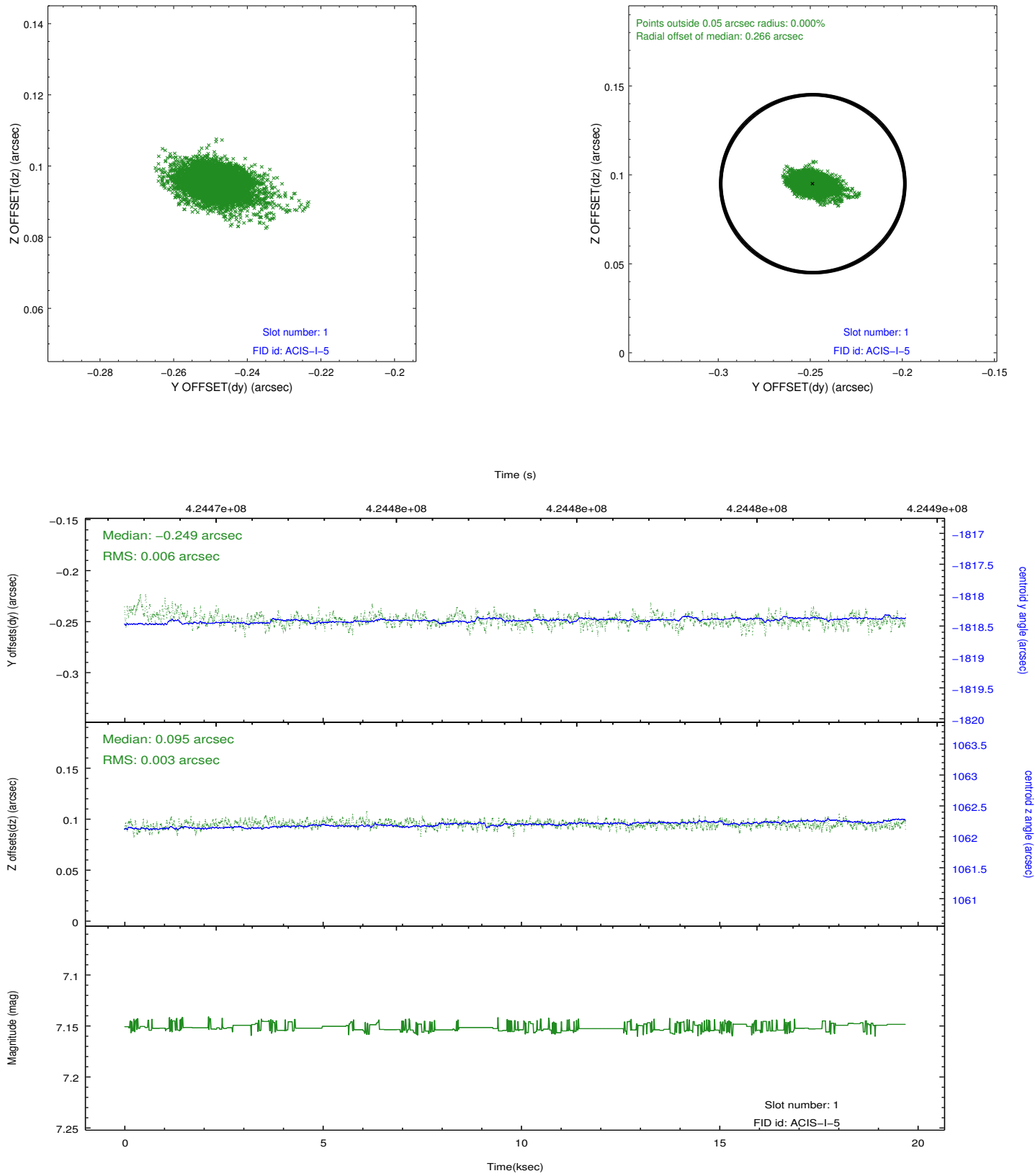


2.5 FID Slots

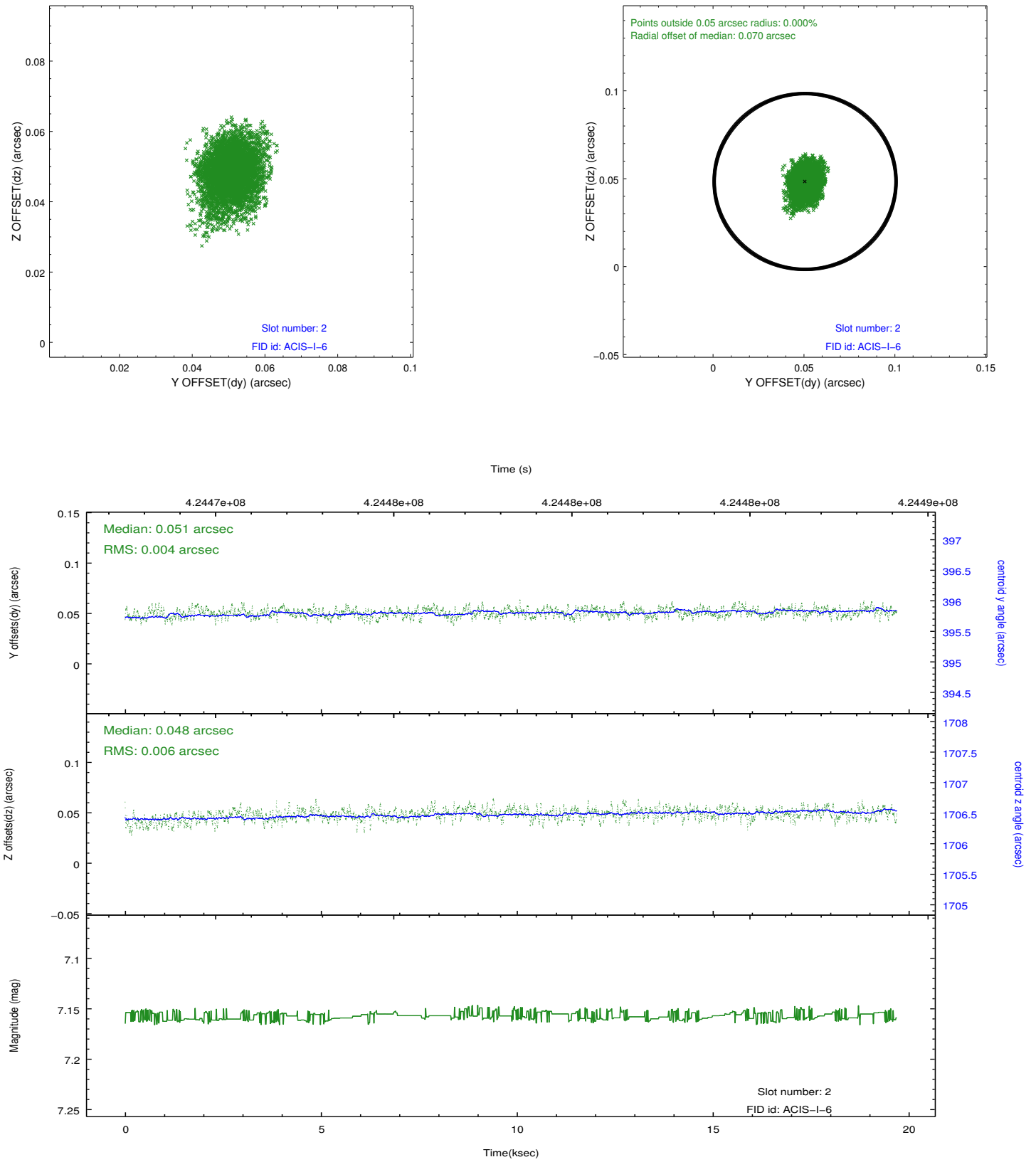
2.5.1 Slot 0



2.5.2 Slot 1



2.5.3 Slot 2



A Summary

A.1 Status

V&V Scientist	Jen Lauer
V&V Date (YYYY-MM-DD)	2012.02.14
V&V Edition	1
V&V Disposition and Status	OK
V&V Charge Time	19.267199928284

A.2 Comments

Joint proposal: NOAO