

V&V Reference Report

L2 ASCDS Version : 8.4.5

Observation 11546 - L2 Version 2
Chandra X-Ray Center

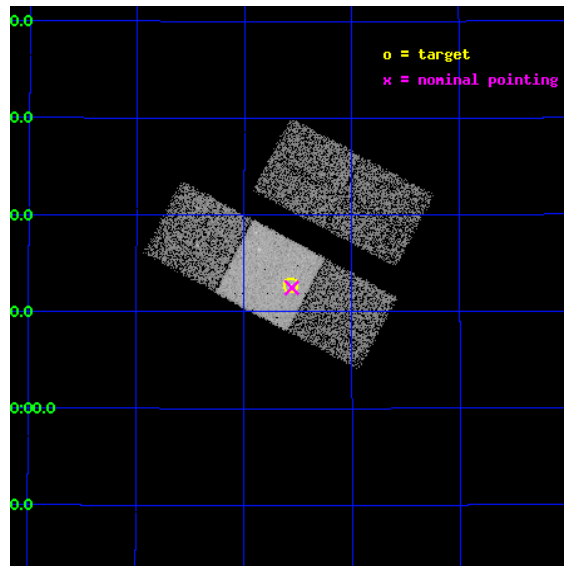
L2 Processing Date : Jun 22 2012

Contents

1	Front	2
2	OBI	3
2.1	OBI	3
2.1.1	Images	3
2.1.2	Bias	3
2.1.3	Parameters	4
2.1.4	Events	4
2.2	Compared Parameters	5
2.3	Aspect	6
2.4	Star Slots	9
2.4.1	Slot 3	9
2.4.2	Slot 4	10
2.4.3	Slot 5	11
2.4.4	Slot 6	12
2.4.5	Slot 7	13
2.5	FID Slots	14
2.5.1	Slot 0	14
2.5.2	Slot 1	15
2.5.3	Slot 2	16
A	Summary	17
A.1	Status	17
A.2	Comments	17

1 Front

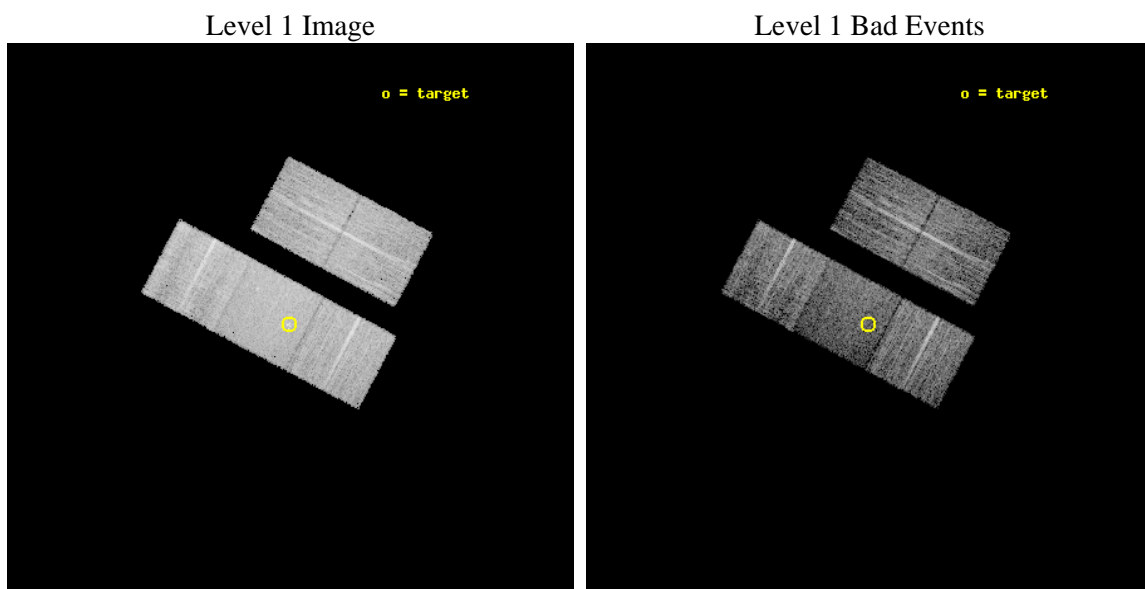
seq_num	702132	Sequence number
obs_id	11546	Observation id
title	The Size of Quasar Non-Thermal/X-ray Emission Regions	Proposal tit
observer	Prof. Christopher Kochanek	Principal investigator
object	SDSS1004+4112	Source name
dtcycle	0	
cycle	P	events from which exps? Prim/Second/Both
ra_targ	151.1425	Observer's specified target RA [deg]
dec_targ	41.212222	Observer's specified target Dec [deg]
ra_nom	151.13926013979	Nominal RA [deg]
dec_nom	41.20803910827	Nominal Dec [deg]
roll_nom	208.0174214934	Nominal Roll [deg]
revision	2	Processing version of data
ontime	6035.7000464201	Sum of GTIs [s]
livetime	5956.8391818959	Livetime [s]
ontime2	6032.5590260625	Sum of GTIs [s]
ontime3	6035.7000464201	Sum of GTIs [s]
ontime6	6035.7000464201	Sum of GTIs [s]
ontime7	6035.7000464201	Sum of GTIs [s]
ontime8	6035.7000464201	Sum of GTIs [s]
l2events	44985	Number of level 2 events



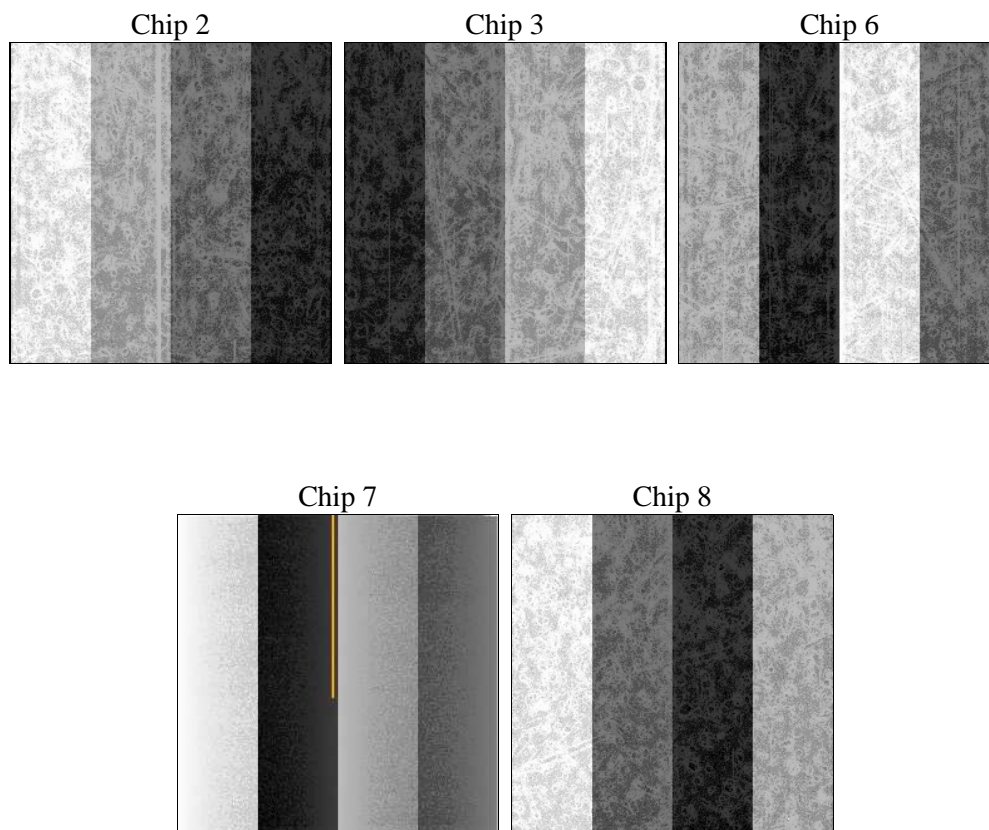
2 OBI

2.1 OBI

2.1.1 Images



2.1.2 Bias



2.1.3 Parameters

obi_num	0	Obi number	sched_exp_time	6000.000000	[s] Scheduled observation exposure time
ascdsver	8.4.5	Processing system revision	ontime	6035.7000464201	Sum of GTIs [s]
caldsver	4.4.10	 	ontime2	6032.5590260625	Sum of GTIs [s]
date	2012-06-22T15:47:07	Date and time of file creation	ontime3	6035.7000464201	Sum of GTIs [s]
revision	2	Processing version of data	ontime6	6035.7000464201	Sum of GTIs [s]
			ontime7	6035.7000464201	Sum of GTIs [s]
			ontime8	6035.7000464201	Sum of GTIs [s]
			l1events	269174	Number of level 1 events

2.1.4 Events

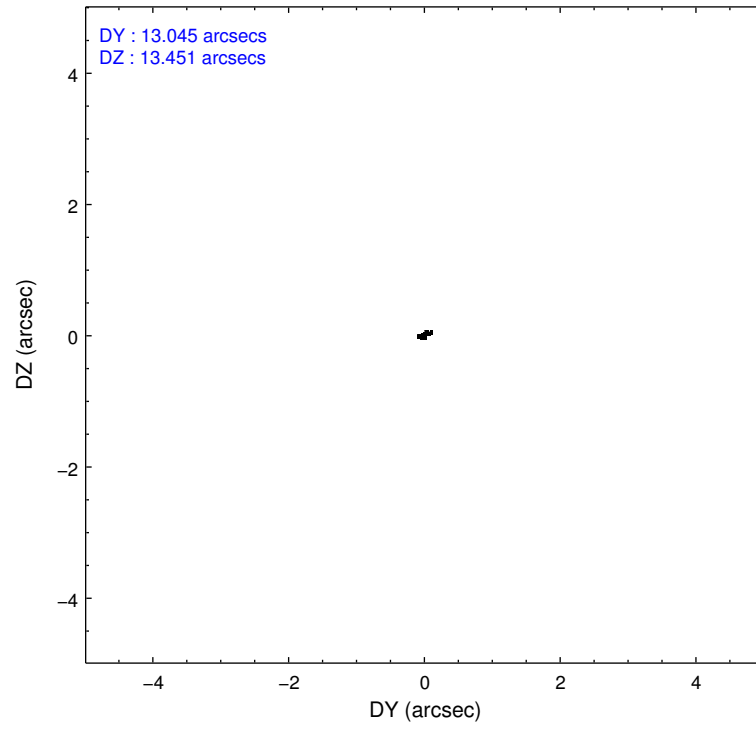
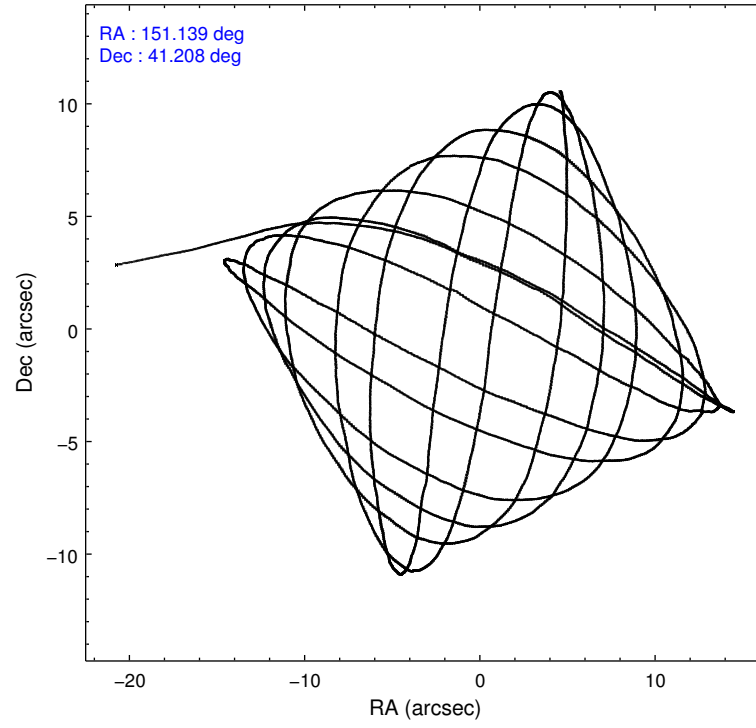
	ccd 2	ccd 3	ccd 6	ccd 7	ccd 8
level 1 events	49479	47948	50115	59082	62550
rejected events	44448	43014	44646	31877	46936
rejected %	89%	89%	89%	53%	75%

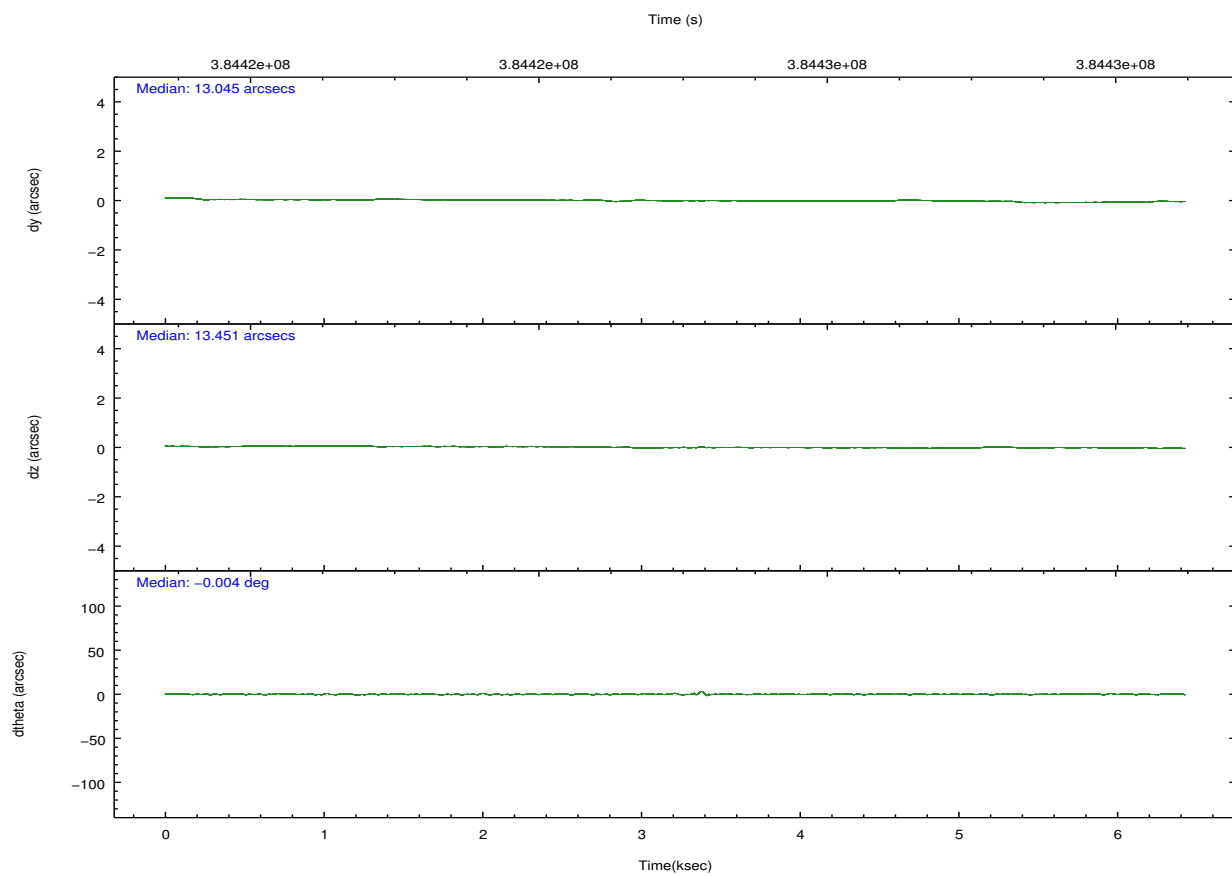
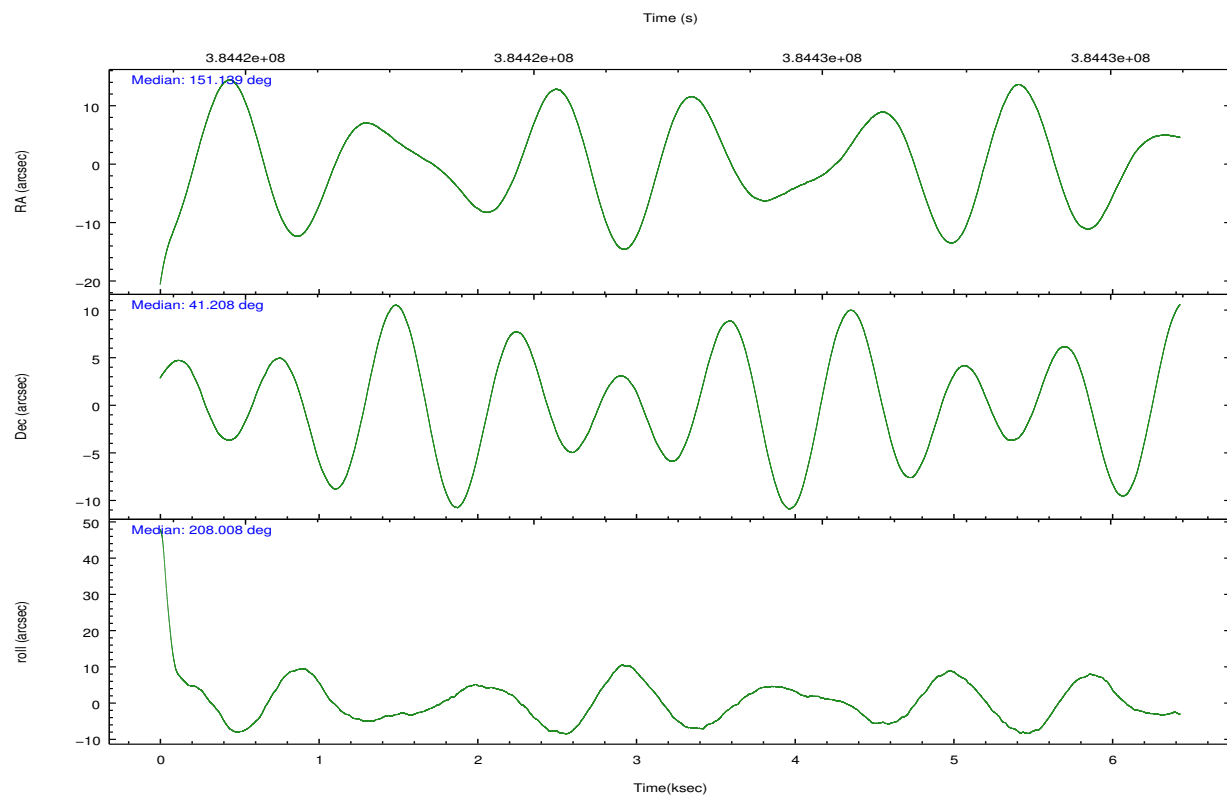
	ccd 2	ccd 3	ccd 6	ccd 7	ccd 8
grade 0 events	1762	1711	1843	2735	4499
	3%	3%	3%	4%	7%
grade 1 events	35	26	23	69	43
	0%	0%	0%	0%	0%
grade 2 events	1289	1048	1314	5533	3832
	2%	2%	2%	9%	6%
grade 3 events	506	588	559	2445	1659
	1%	1%	1%	4%	2%
grade 4 events	534	541	551	2412	1551
	1%	1%	1%	4%	2%
grade 5 events	1798	2111	2234	6128	3046
	3%	4%	4%	10%	4%
grade 6 events	943	1052	1203	14096	4101
	1%	2%	2%	23%	6%
grade 7 events	42612	40871	42388	25664	43819
	86%	85%	84%	43%	70%

2.2 Compared Parameters

Parameter	Planned	Actual	Parameter	Planned	Actual
Instrument	ACIS	ACIS	Obspar format version number	7	7
Detector	ACIS-23678	ACIS-23678	Obspar file type	PREDICTED	ACTUAL
Grating	NONE	NONE	Obspar update status	NONE	UPDATED
Data mode	VFAINT	VFAINT	CCD I0 on	N	N
Observation mode	POINTING	POINTING	CCD I1 on	N	N
[deg] Pointing RA	151.158085	151.1392601397873	CCD I2 on	O4	Y
[deg] Pointing Dec	41.231422	41.20803910827021	CCD I3 on	O3	Y
[deg] Pointing Roll	207.848322	208.0174214933989	CCD S0 on	N	N
[mm] SIM focus pos	-0.684267	-0.6828225247311905	CCD S1 on	N	N
[mm] SIM defocus	0	0.001444936568705701	CCD S2 on	O1	Y
[mm] SIM translation stage pos	-190.132523	-190.1400660498719	CCD S3 on	Y	Y
[mm] SIM translation stage offset	0	0.00754346686406393	CCD S4 on	O2	Y
[s] Observation start time (MET)	384422152.184000	384421103.23943	CCD S5 on	N	N
Observation start date	2010-03-08T07:54:46	2010-03-08T07:38:23	Number of optional ACIS chips dropped	0	0
[s] Observation end time (MET)	384428152.184000	384428870.68983	On-chip summing requested	N	N
Observation end date	2010-03-08T09:34:46	2010-03-08T09:47:50	Subarray requested	NONE	NONE
Read mode	TIMED	TIMED	Alternating exposures requested	N	N
			[s] Primary exposure time	0.000000	3.1

2.3 Aspect



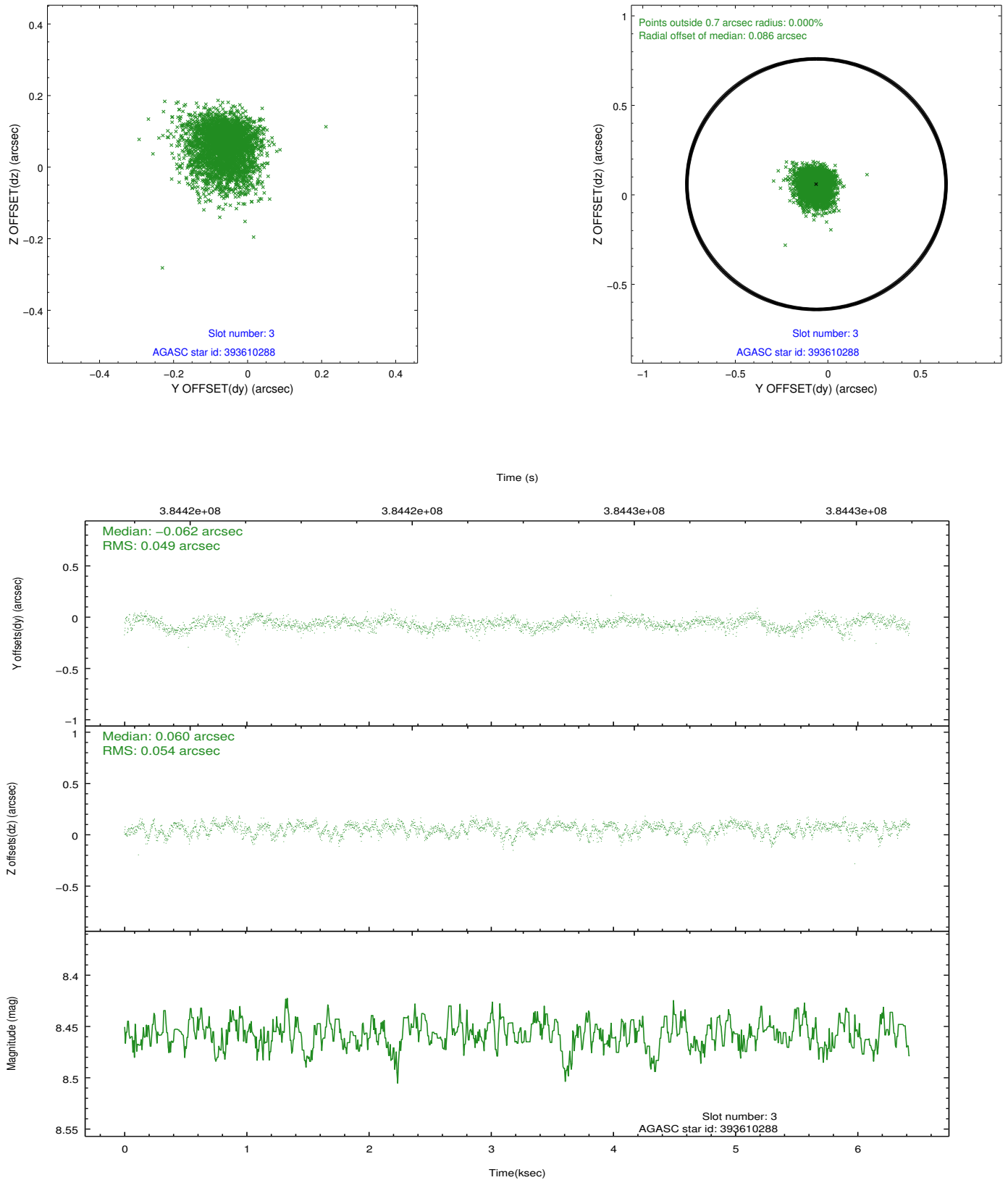


Slot Statistics

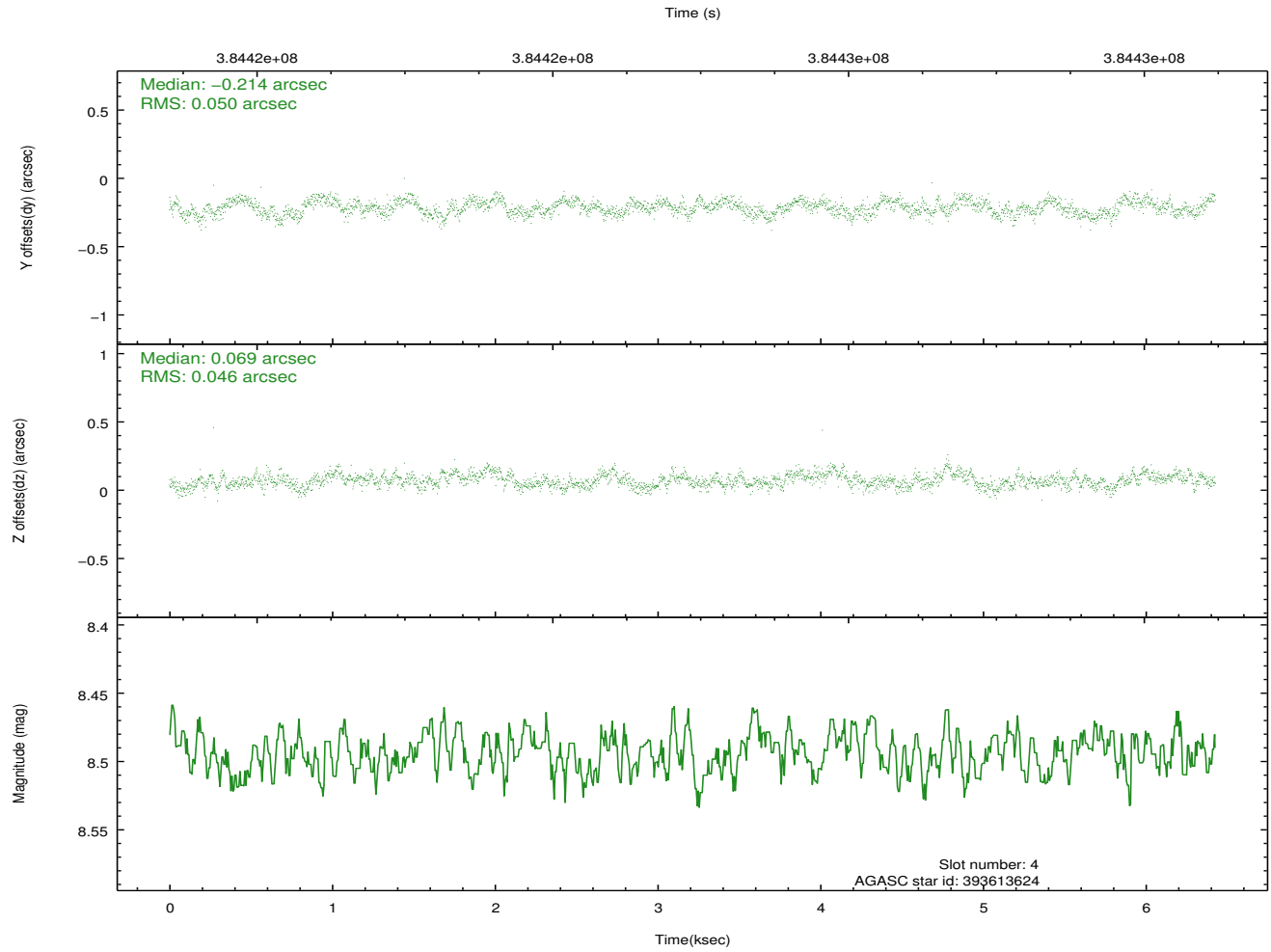
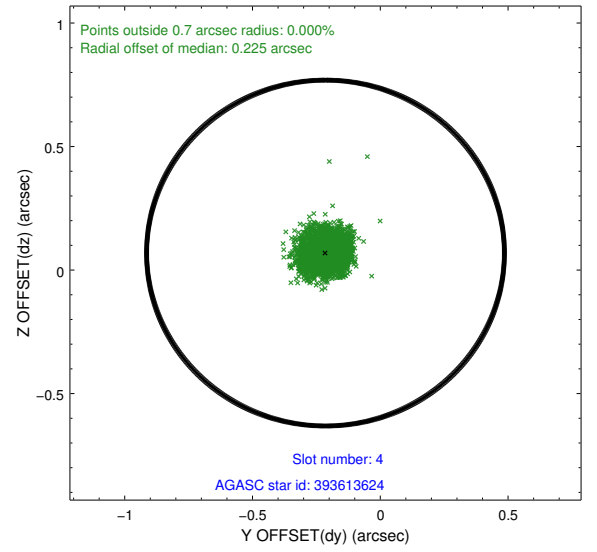
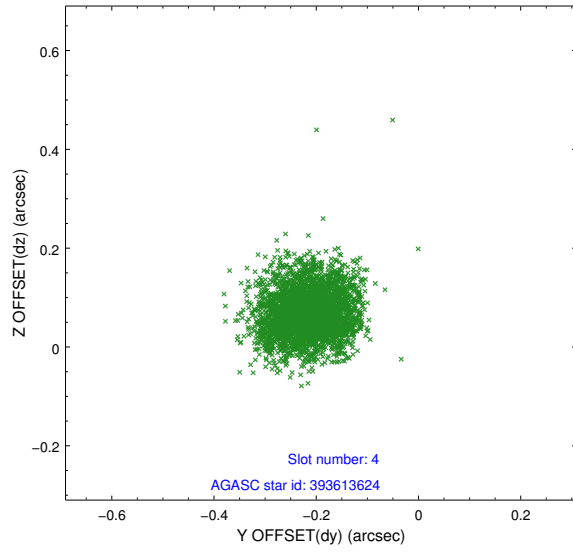
slot	status	id	mag	n_pts	med_dy	med_dz	dr1	dr2	ra	dec	mean_y	mean_z
0	FID	ACIS-S-2	6.97	1568	-0.032	-0.069	0.006	0.011	0.000000	0.000000	-766.00	-1734.86
1	FID	ACIS-S-4	7.05	1568	0.179	0.034	0.006	0.011	0.000000	0.000000	2147.08	172.77
2	FID	ACIS-S-5	7.09	1564	-0.177	0.043	0.006	0.011	0.000000	0.000000	-1817.81	167.50
3	GUIDE	393610288	8.46	3134	-0.062	0.060	0.075	0.127	151.538899	41.090404	-676.49	929.25
4	GUIDE	393613624	8.49	3136	-0.214	0.069	0.073	0.114	151.136661	40.665270	1003.34	1775.42
5	GUIDE	393616408	9.04	3134	0.077	-0.069	0.084	0.133	150.713966	41.346840	866.49	-930.04
6	GUIDE	393616688	9.00	3134	0.246	-0.108	0.094	0.149	151.530834	40.712712	-27.67	2124.02
7	GUIDE	393616816	8.43	3133	-0.037	0.053	0.063	0.103	151.562975	40.925077	-458.97	1487.82

2.4 Star Slots

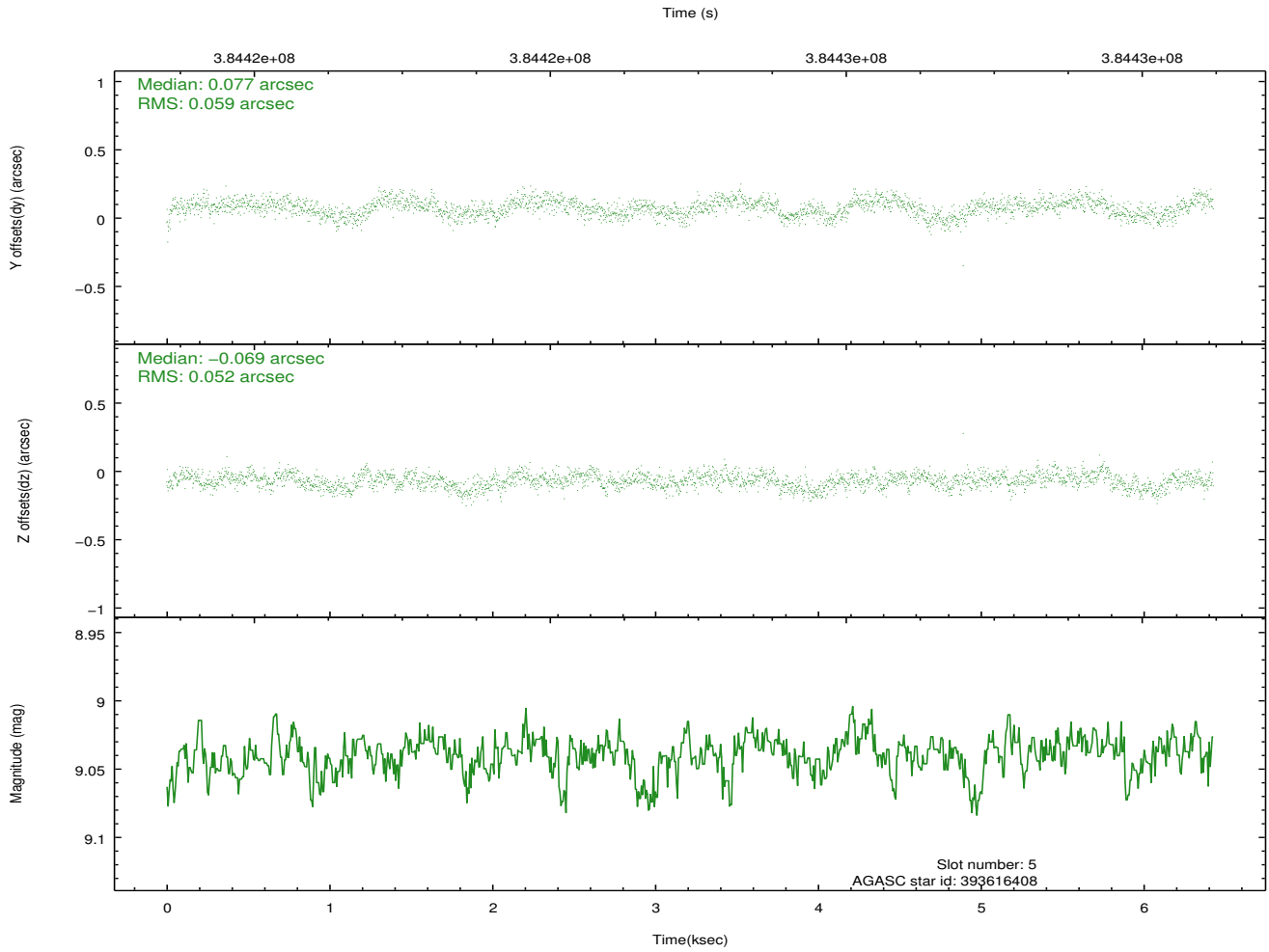
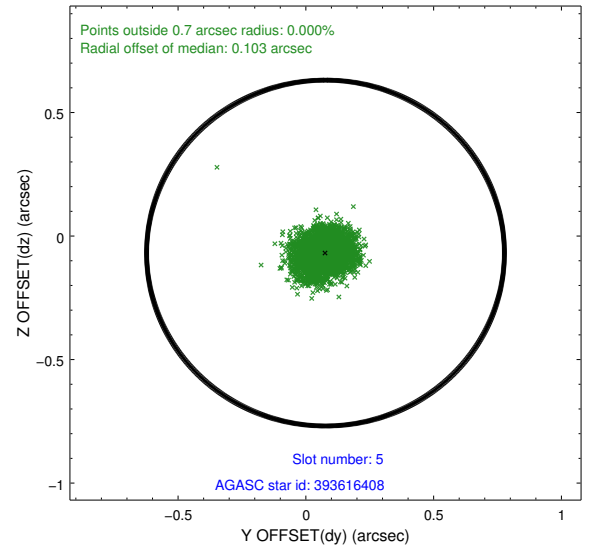
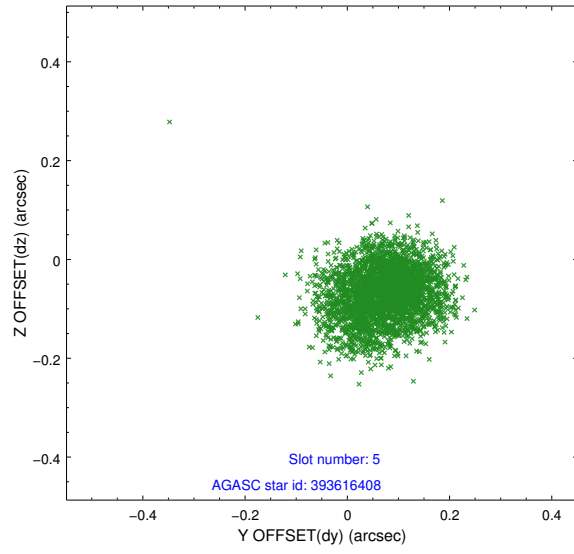
2.4.1 Slot 3



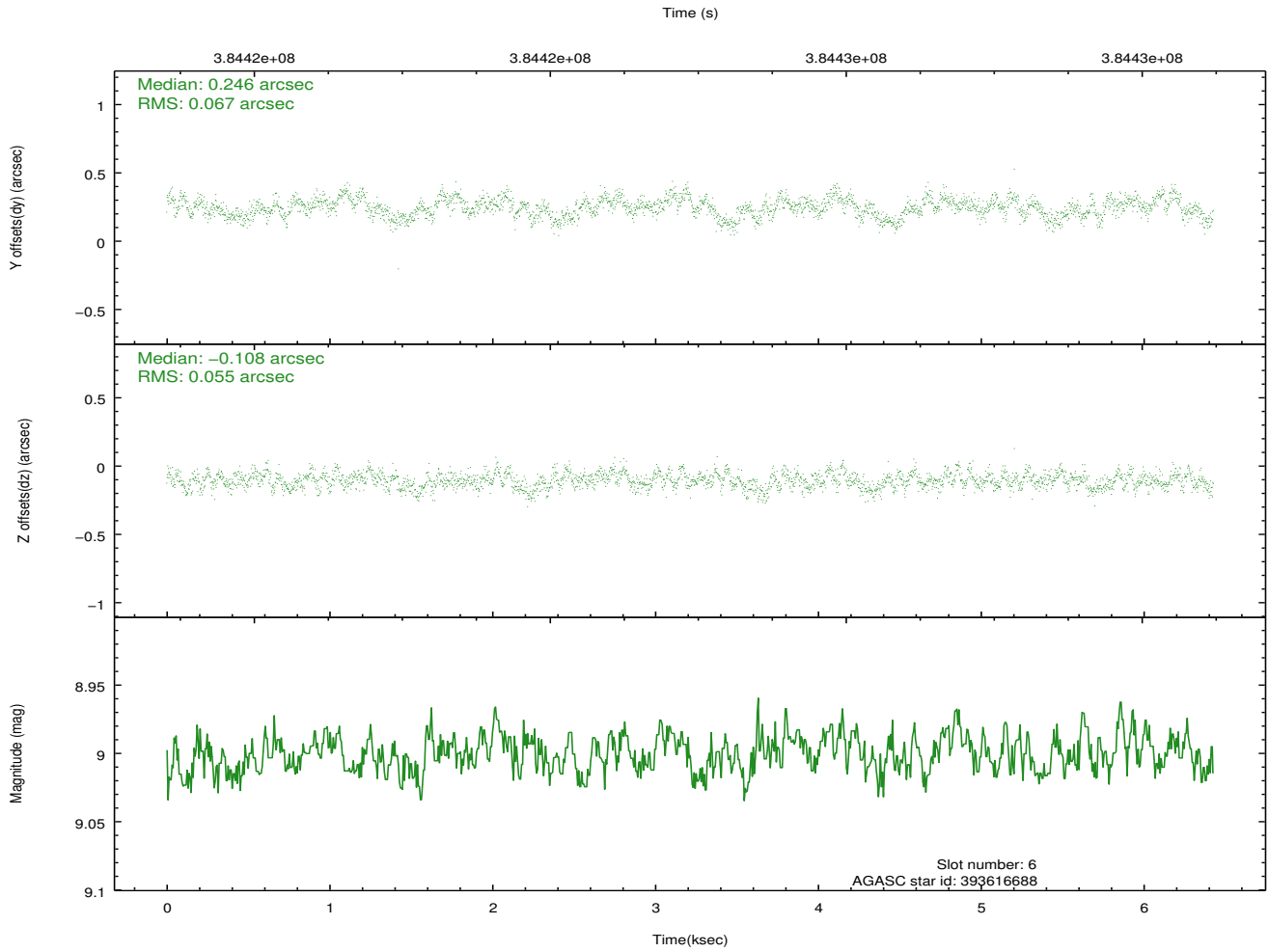
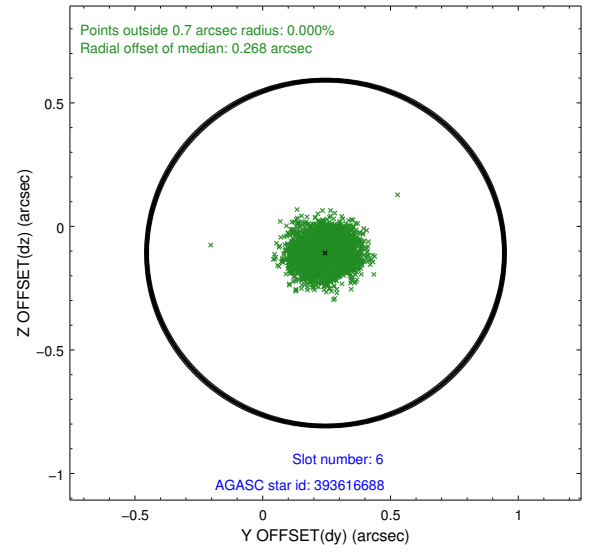
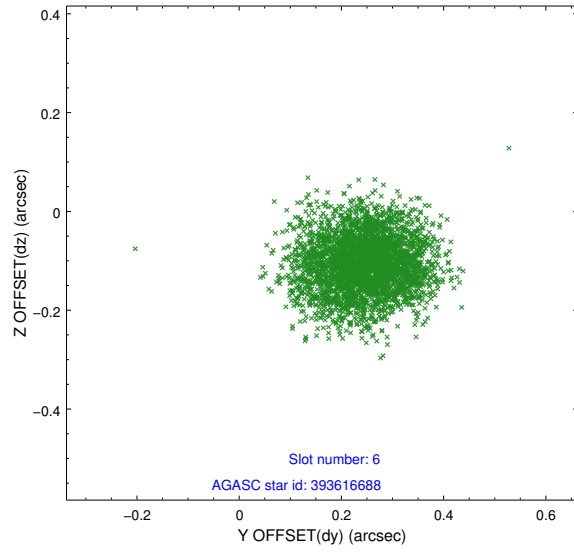
2.4.2 Slot 4



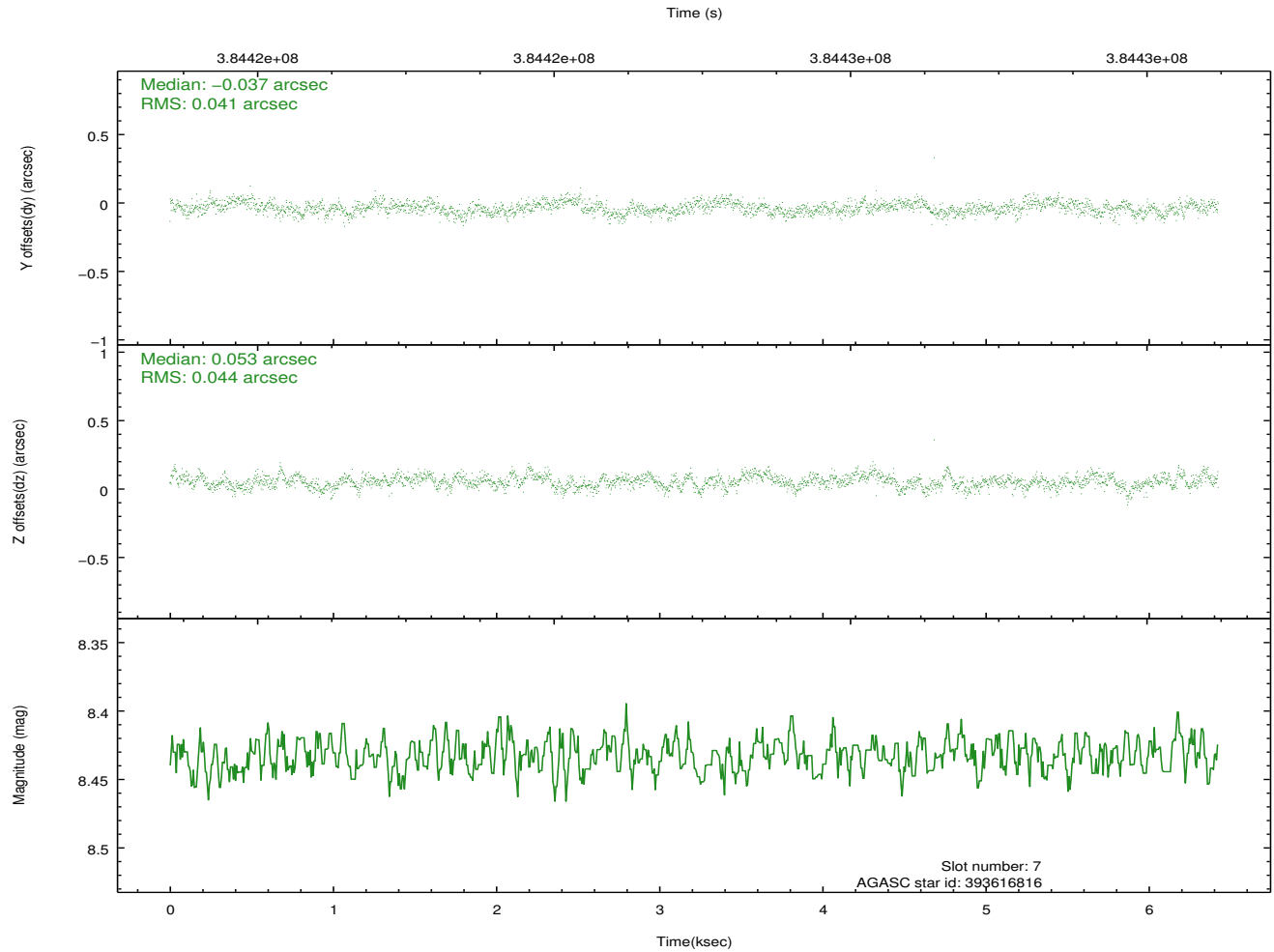
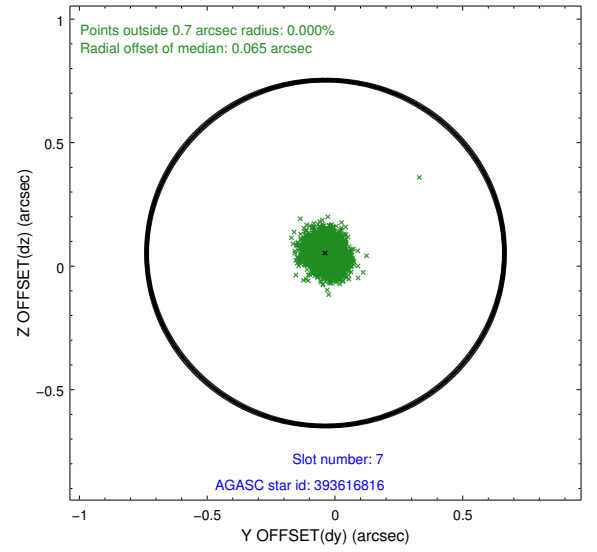
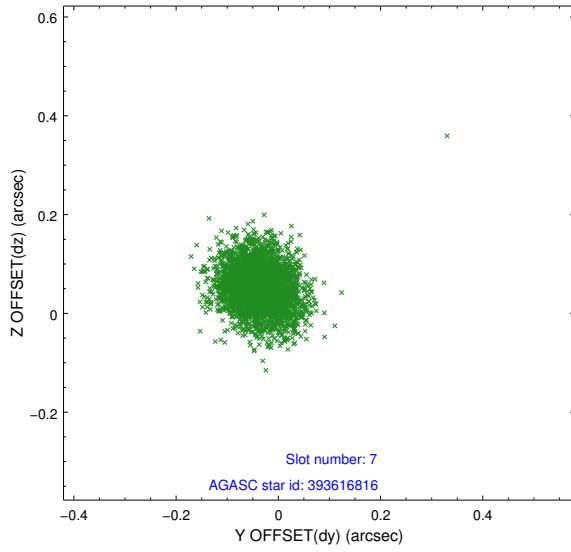
2.4.3 Slot 5



2.4.4 Slot 6

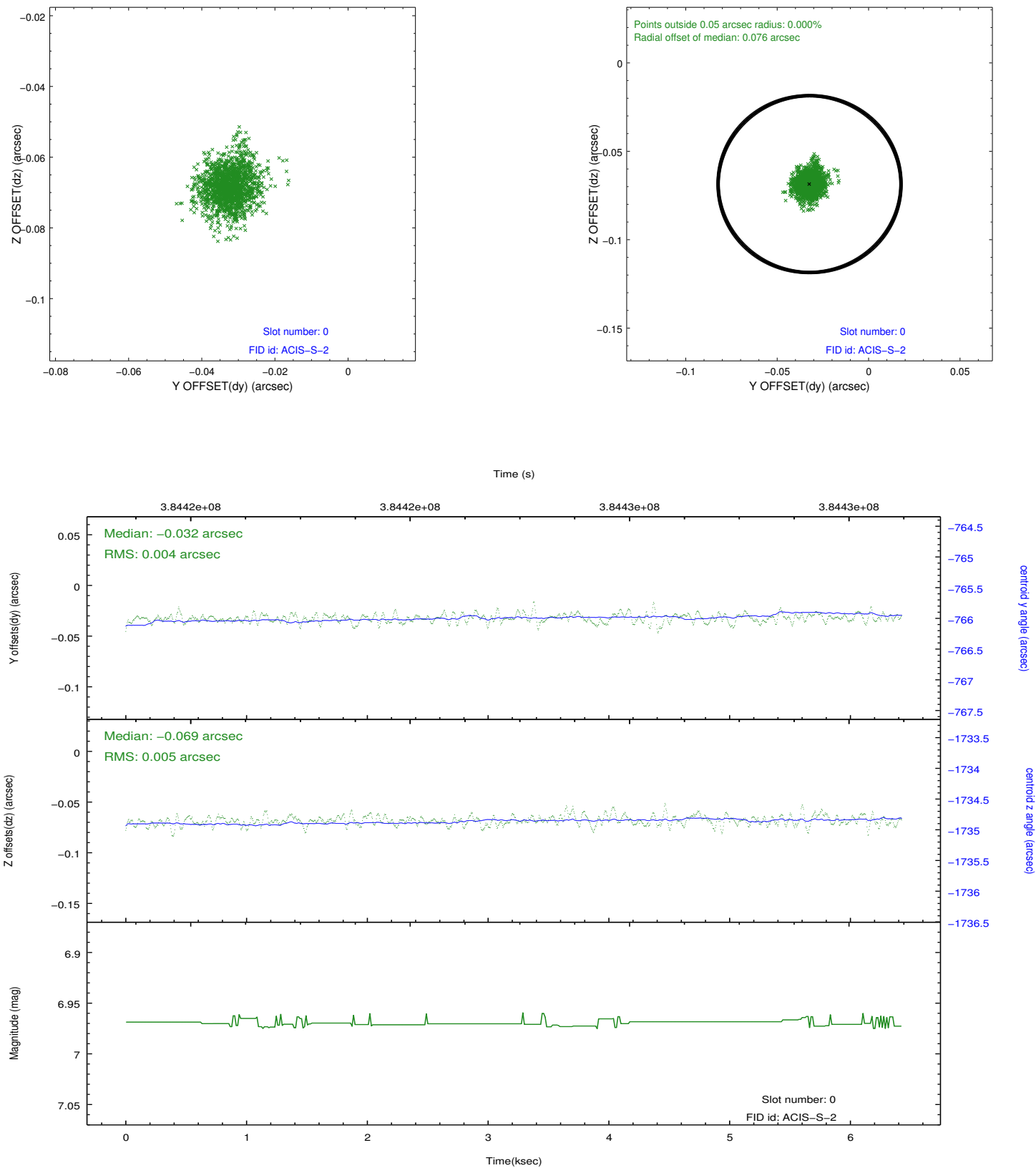


2.4.5 Slot 7

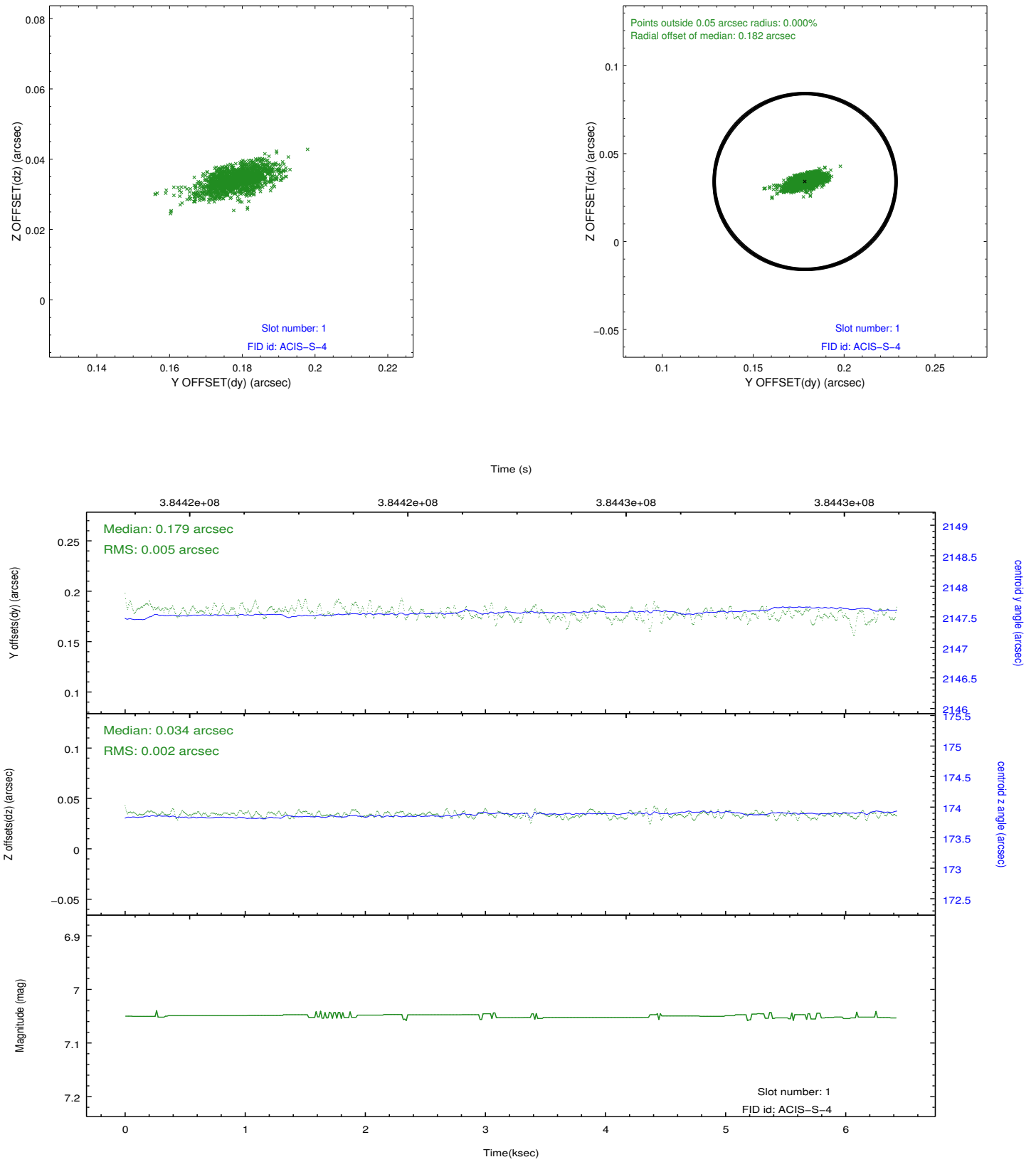


2.5 FID Slots

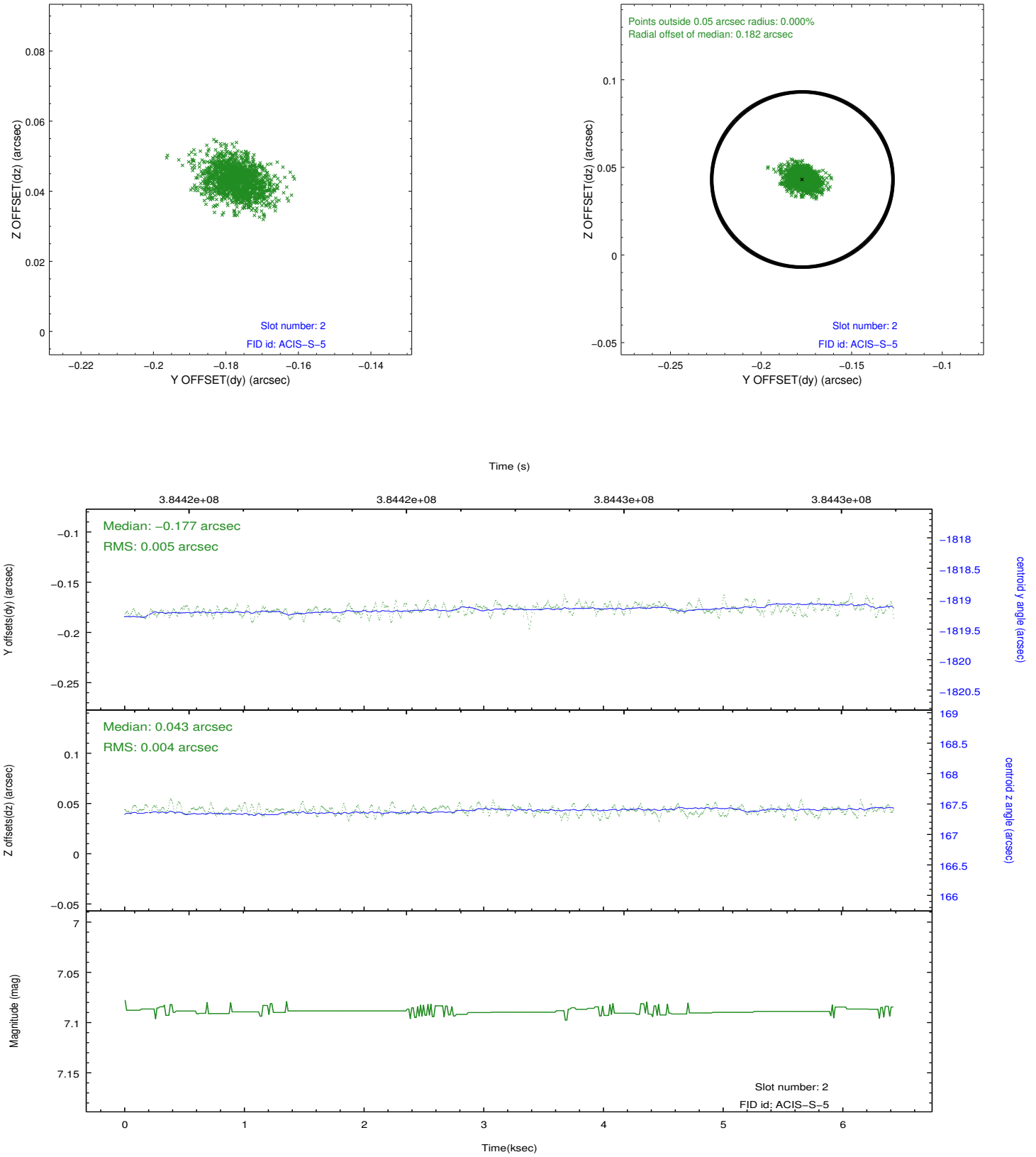
2.5.1 Slot 0



2.5.2 Slot 1



2.5.3 Slot 2



A Summary

A.1 Status

V&V Scientist	Jen Lauer
V&V Date (YYYY-MM-DD)	2012.06.28
V&V Edition	1
V&V Disposition and Status	OK
V&V Charge Time	6.0357000464201

A.2 Comments