

# V&V Reference Report

## L2 ASCDS Version : 8.4.4

Observation 10516 - L2 Version 2  
Chandra X-Ray Center

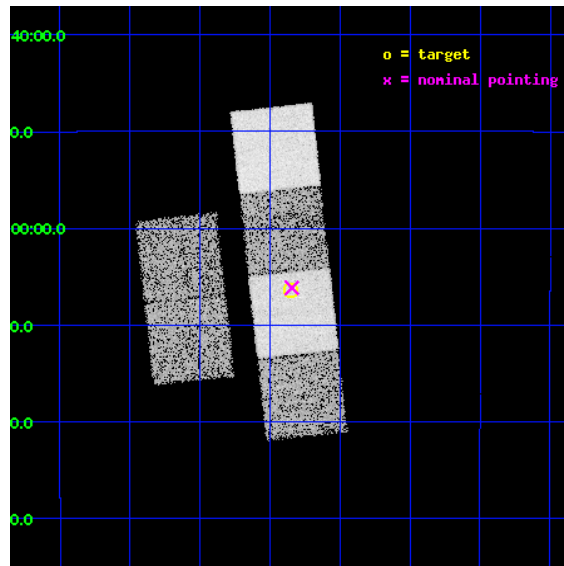
L2 Processing Date : May 30 2012

## Contents

<b>1</b>	<b>Front</b>	<b>2</b>
<b>2</b>	<b>OBI</b>	<b>3</b>
2.1	OBI . . . . .	3
2.1.1	Images . . . . .	3
2.1.2	Bias . . . . .	3
2.1.3	Parameters . . . . .	4
2.1.4	Events . . . . .	4
2.2	Compared Parameters . . . . .	5
2.3	Aspect . . . . .	6
2.4	Star Slots . . . . .	9
2.4.1	Slot 3 . . . . .	9
2.4.2	Slot 4 . . . . .	10
2.4.3	Slot 5 . . . . .	11
2.4.4	Slot 6 . . . . .	12
2.4.5	Slot 7 . . . . .	13
2.5	FID Slots . . . . .	14
2.5.1	Slot 0 . . . . .	14
2.5.2	Slot 1 . . . . .	15
2.5.3	Slot 2 . . . . .	16
<b>A</b>	<b>Summary</b>	<b>17</b>
A.1	Status . . . . .	17
A.2	Comments . . . . .	17

# 1 Front

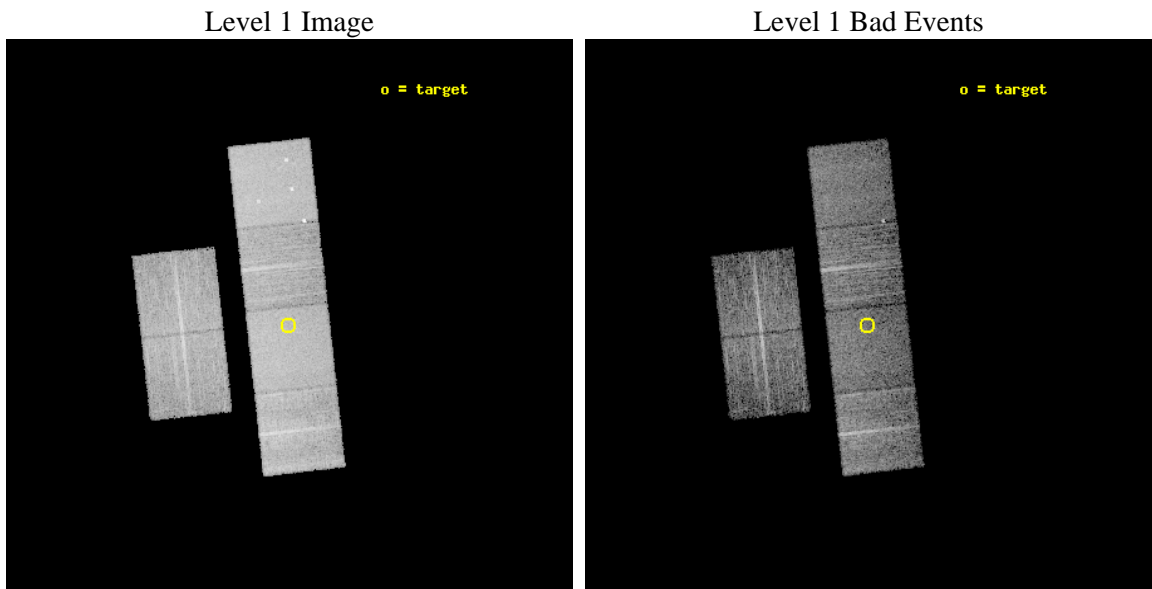
seq_num	900884	Sequence number
obs_id	10516	Observation id
title	ChIcAGO: Chandra Identification of ASCA Galactic Objects	Proposal
observer	Prof. Bryan Gaensler	Principal investigator
object	AX J182651-1206	Source name
dtcycle	0	&#160
cycle	P	events from which exps? Prim/Second/Both
ra_targ	276.712917	Observer's specified target RA [deg]
dec_targ	-12.107	Observer's specified target Dec [deg]
ra_nom	276.71076476637	Nominal RA [deg]
dec_nom	-12.102677354989	Nominal Dec [deg]
roll_nom	83.680941148556	Nominal Roll [deg]
revision	2	Processing version of data
ontime	5756.7755367756	Sum of GTIs [s]
livetime	5683.8797786149	Livetime [s]
ontime2	5756.7999786139	Sum of GTIs [s]
ontime3	5756.6524167657	Sum of GTIs [s]
ontime5	5756.7344967723	Sum of GTIs [s]
ontime6	5756.693456769	Sum of GTIs [s]
ontime7	5756.7755367756	Sum of GTIs [s]
ontime8	5750.1294263005	Sum of GTIs [s]
l2events	101309	Number of level 2 events



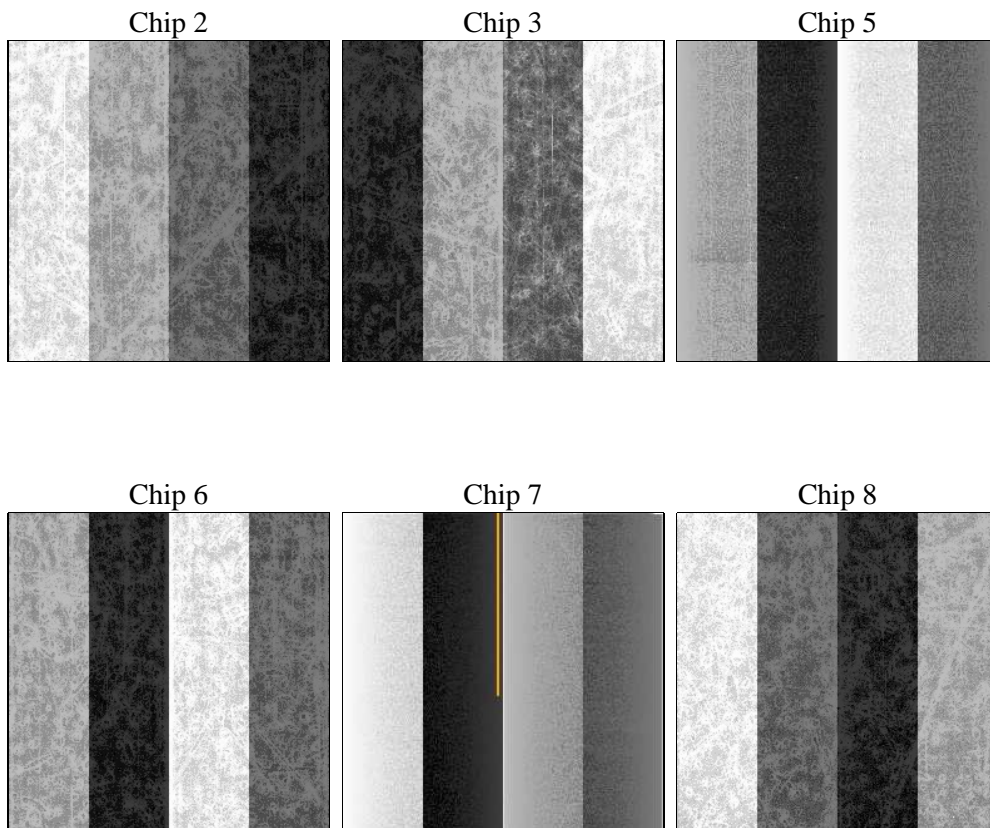
## 2 OBI

### 2.1 OBI

#### 2.1.1 Images



#### 2.1.2 Bias



### 2.1.3 Parameters

obi_num	0	Obi number	sched_exp_time	6000.000000	[s] Scheduled observation exposure time
ascdsver	8.4.4	Processing system revision	ontime	5756.7755367756	Sum of GTIs [s]
caldsver	4.4.9	&#160	ontime2	5756.7999786139	Sum of GTIs [s]
date	2012-05-30T23:47:21	Date and time of file creation	ontime3	5756.6524167657	Sum of GTIs [s]
revision	2	Processing version of data	ontime5	5756.7344967723	Sum of GTIs [s]
			ontime6	5756.693456769	Sum of GTIs [s]
			ontime7	5756.7755367756	Sum of GTIs [s]
			ontime8	5750.1294263005	Sum of GTIs [s]
			l1events	426275	Number of level 1 events

### 2.1.4 Events

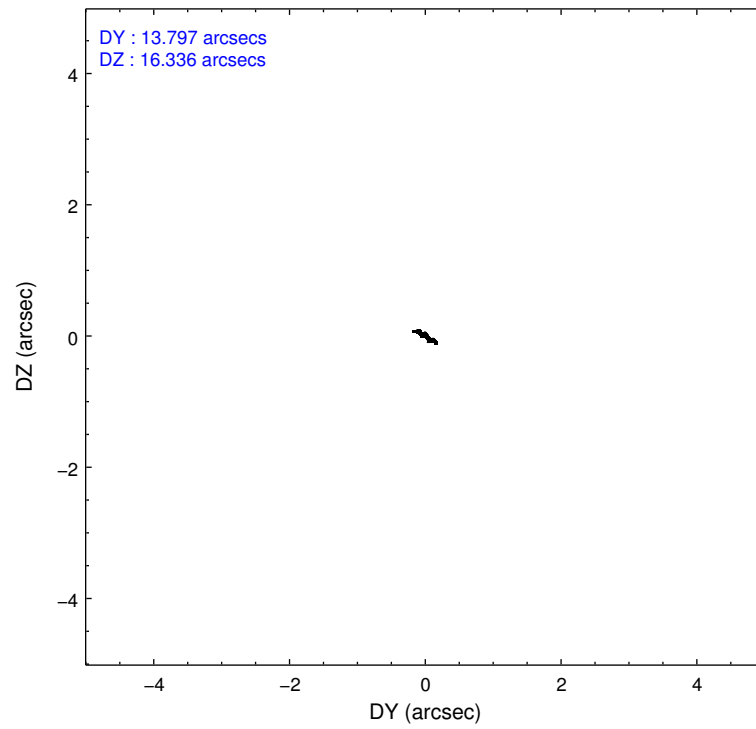
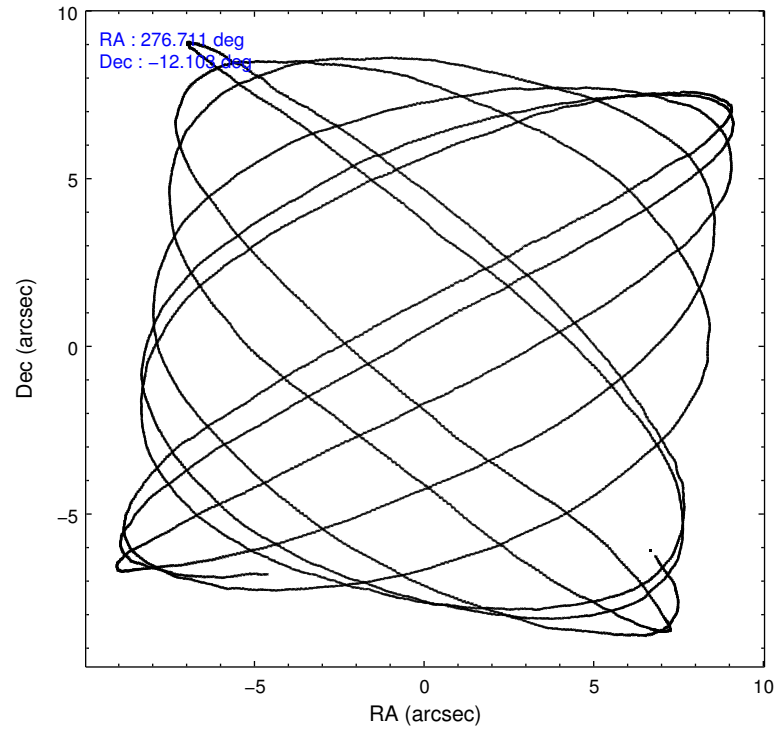
	ccd 2	ccd 3	ccd 5	ccd 6	ccd 7	ccd 8		ccd 2	ccd 3	ccd 5	ccd 6	ccd 7	ccd 8
level 1 events	58380	55594	92532	59998	81922	77849	grade 0 events	3415	3470	4246	3182	2908	5632
rejected events	50945	48109	49187	52280	47633	60105		5%	6%	4%	5%	3%	7%
rejected %	87%	86%	53%	87%	58%	77%	grade 1 events	46	45	365	39	87	69
								0%	0%	0%	0%	0%	0%
							grade 2 events	1543	1477	13037	1638	7027	4007
								2%	2%	14%	2%	8%	5%
							grade 3 events	602	669	1620	686	2900	1751
								1%	1%	1%	1%	3%	2%
							grade 4 events	643	686	1550	684	2899	1670
								1%	1%	1%	1%	3%	2%
							grade 5 events	2432	2725	6477	2836	7453	3740
								4%	4%	6%	4%	9%	4%
							grade 6 events	1238	1196	22935	1536	18590	4691
								2%	2%	24%	2%	22%	6%
							grade 7 events	48461	45326	42302	49397	40058	56289
								83%	81%	45%	82%	48%	72%

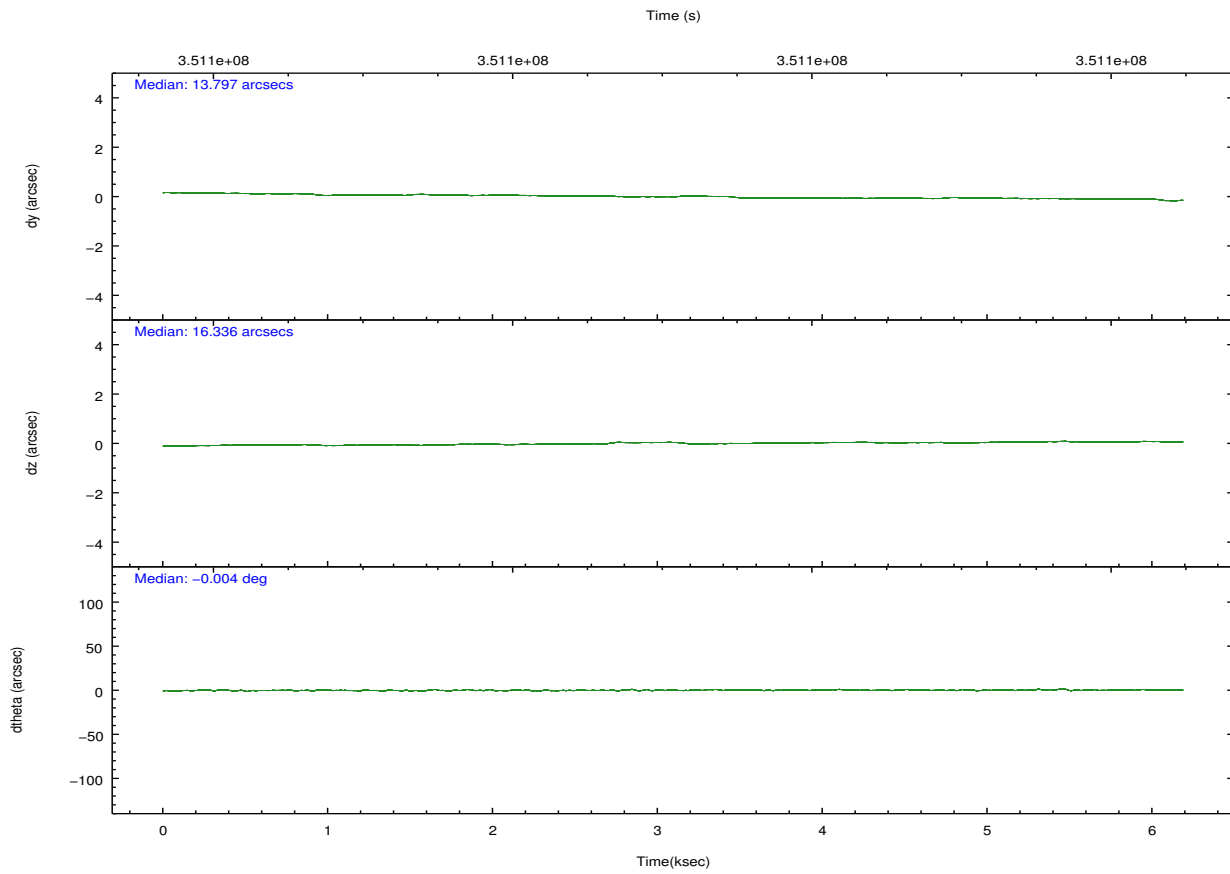
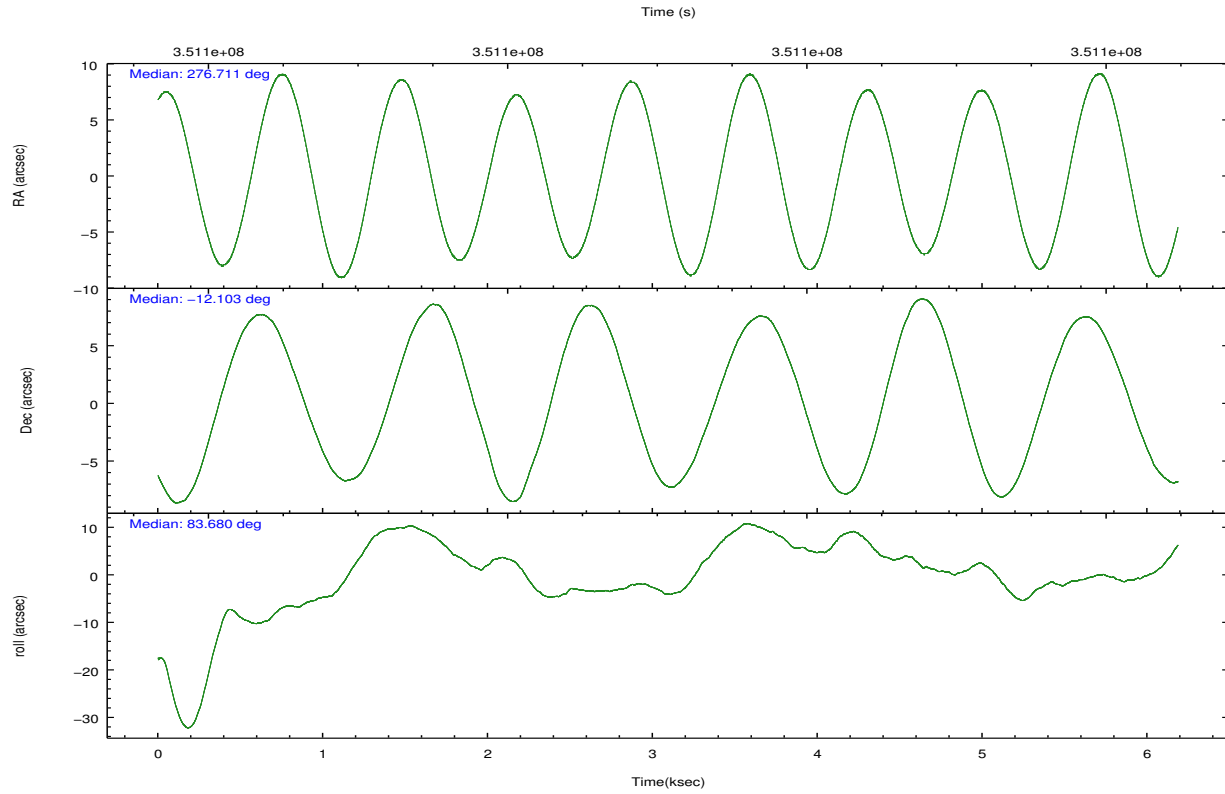


## 2.2 Compared Parameters

Parameter	Planned	Actual	Parameter	Planned	Actual
Instrument	ACIS	ACIS	Obspar format version number	7	7
Detector	ACIS-235678	ACIS-235678	Obspar file type	PREDICTED	ACTUAL
Grating	NONE	NONE	Obspar update status	NONE	UPDATED
Data mode	FAINT	FAINT	CCD I0 on	N	N
Observation mode	POINTING	POINTING	CCD I1 on	N	N
[deg] Pointing RA	276.722375	276.7107647663652	CCD I2 on	O2	Y
[deg] Pointing Dec	-12.127504	-12.10267735498905	CCD I3 on	O3	Y
[deg] Pointing Roll	83.526775	83.68094114855585	CCD S0 on	N	N
[mm] SIM focus pos	-0.684267	-0.6828225247311905	CCD S1 on	O1	Y
[mm] SIM defocus	0	0.001444936568705701	CCD S2 on	O5	Y
[mm] SIM translation stage pos	-190.132523	-190.1425803651734	CCD S3 on	Y	Y
[mm] SIM translation stage offset	0	0.01005778216563158	CCD S4 on	O4	Y
[s] Observation start time (MET)	351098172.184000	351097788.33043	CCD S5 on	N	N
Observation start date	2009-02-15T15:15:06	2009-02-15T15:09:48	Number of optional ACIS chips dropped	0	0
[s] Observation end time (MET)	351104172.184000	351104401.63076	On-chip summing requested	N	N
Observation end date	2009-02-15T16:55:06	2009-02-15T17:00:01	Subarray requested	NONE	NONE
Read mode	TIMED	TIMED	Alternating exposures requested	N	N
			[s] Primary exposure time	0.000000	3.2

## 2.3 Aspect



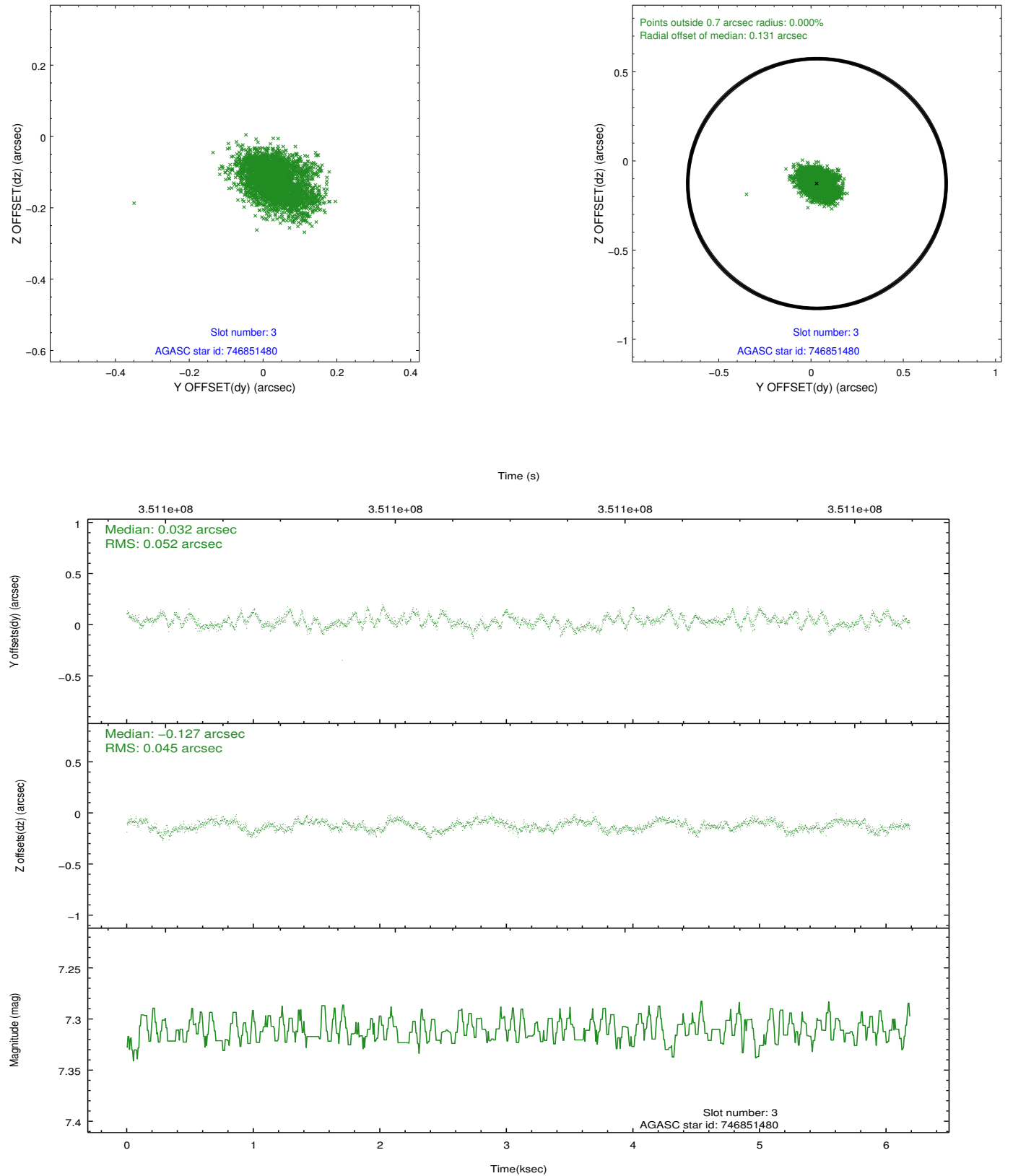


### Slot Statistics

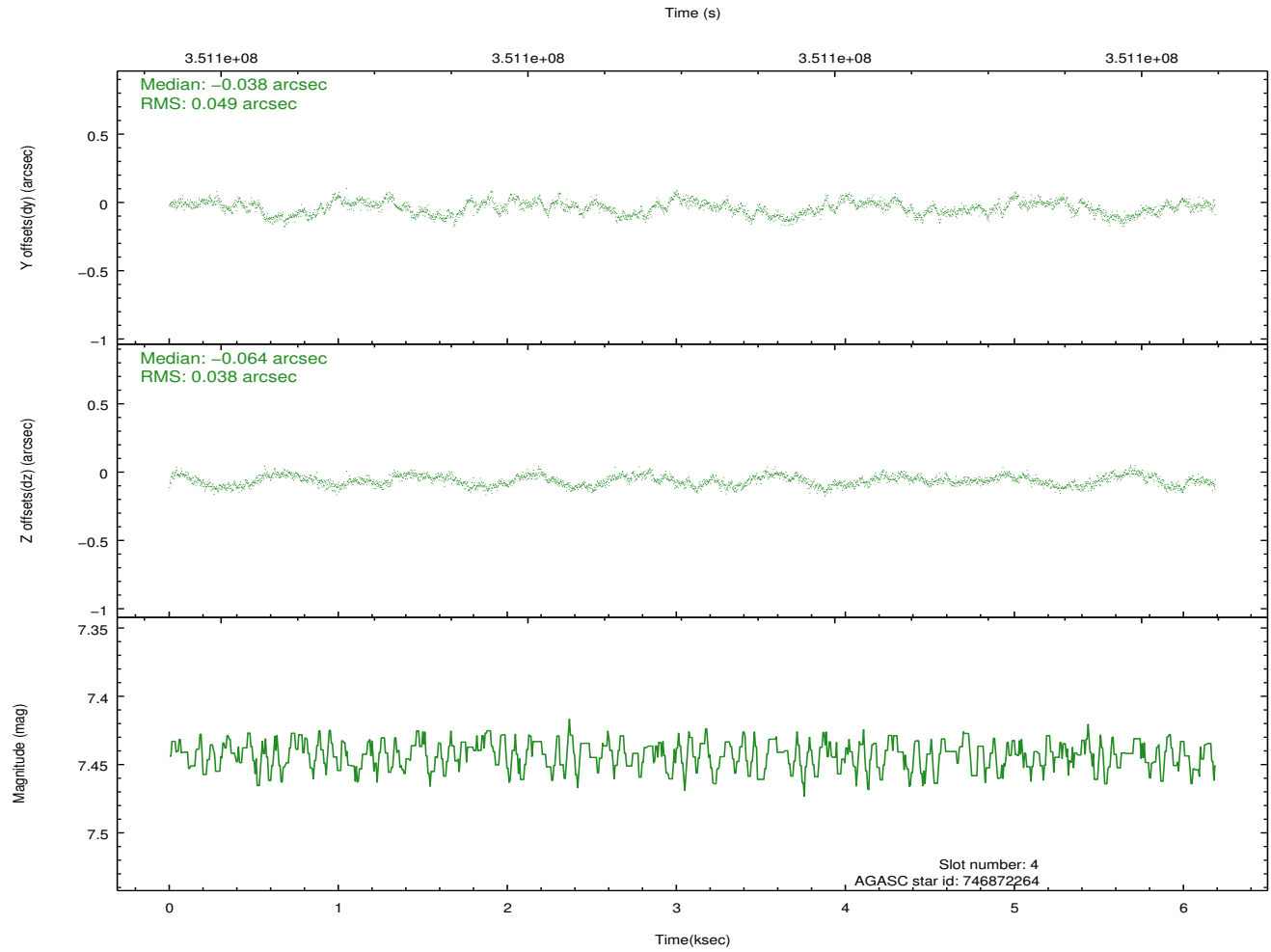
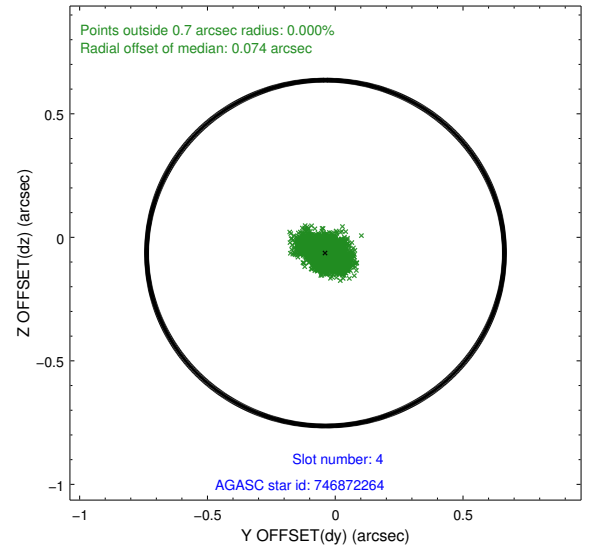
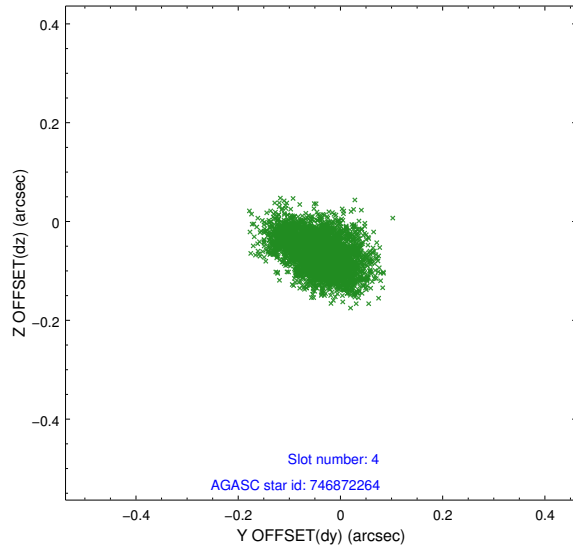
slot	status	id	mag	n_pts	med_dy	med_dz	dr1	dr2	ra	dec	mean_y	mean_z
0	FID	ACIS-S-2	6.89	1509	-0.047	-0.024	0.008	0.012	0.000000	0.000000	-766.78	-1737.72
1	FID	ACIS-S-4	6.97	1509	0.187	0.030	0.008	0.013	0.000000	0.000000	2146.29	169.83
2	FID	ACIS-S-5	7.00	1509	-0.171	0.003	0.007	0.011	0.000000	0.000000	-1818.53	164.56
3	GUIDE	746851480	7.31	3018	0.032	-0.127	0.073	0.119	275.998802	-12.584966	-1926.43	2339.94
4	GUIDE	746872264	7.44	3018	-0.038	-0.064	0.067	0.103	276.174051	-12.475071	-1463.21	1774.50
5	GUIDE	746876560	9.23	3016	0.219	0.176	0.097	0.156	276.166679	-12.675099	-2181.18	1717.57
6	GUIDE	746890536	8.12	3019	0.022	-0.335	0.064	0.104	276.045818	-12.231642	-644.54	2322.76
7	GUIDE	746875824	9.95	3012	-0.247	0.336	0.168	0.266	276.821705	-11.868839	964.23	-241.62

## 2.4 Star Slots

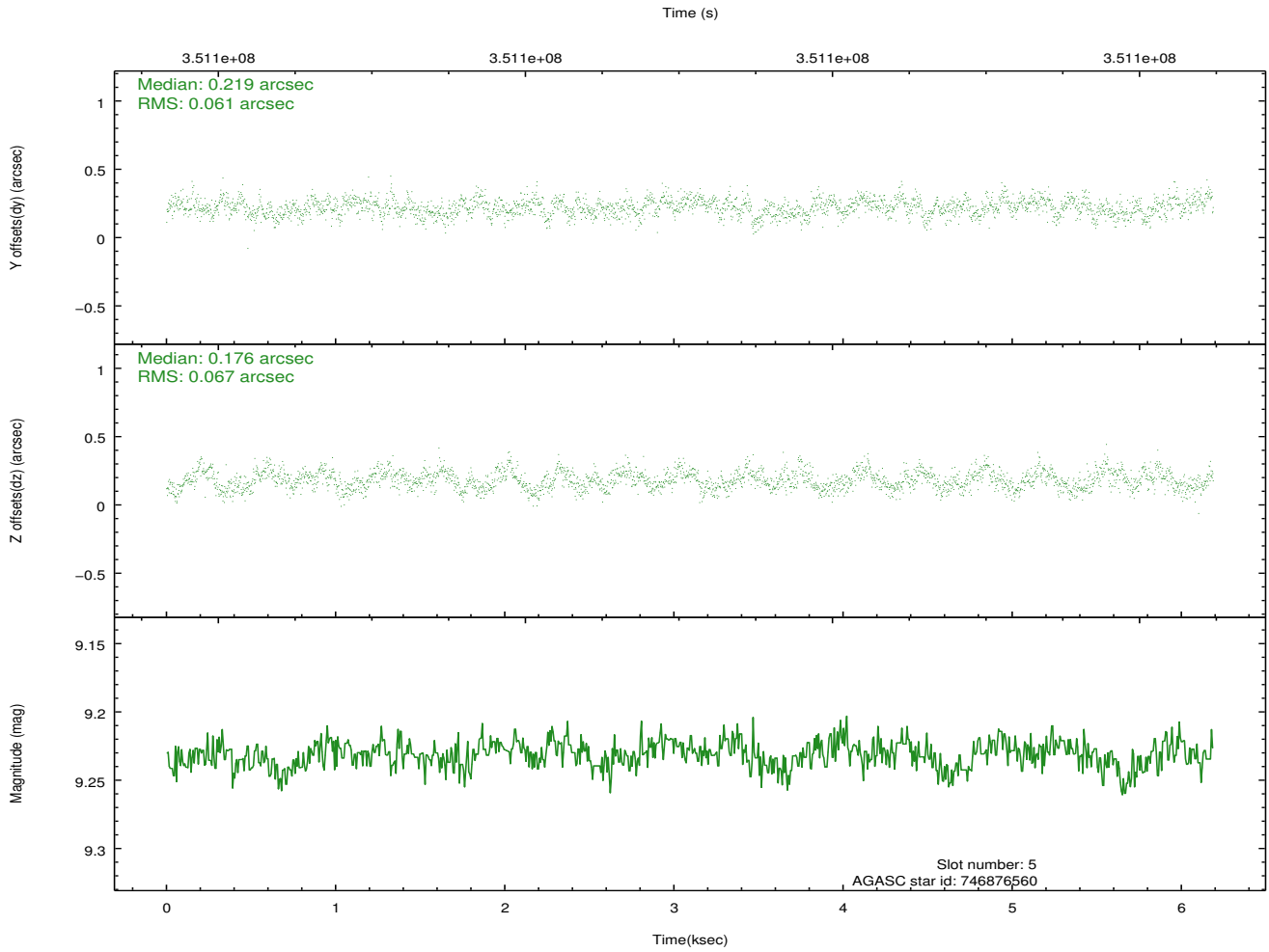
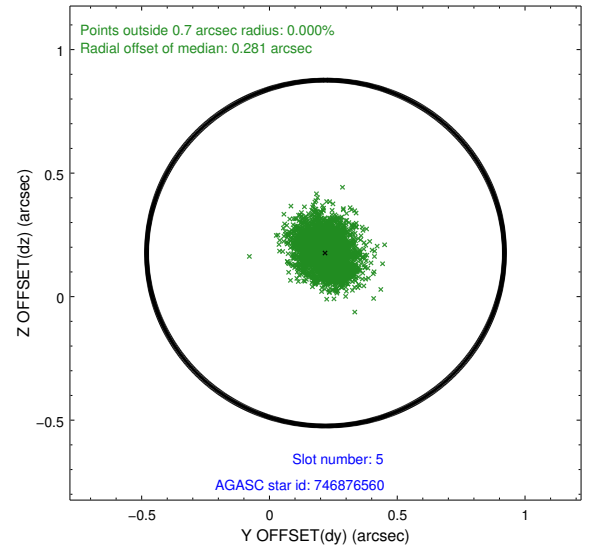
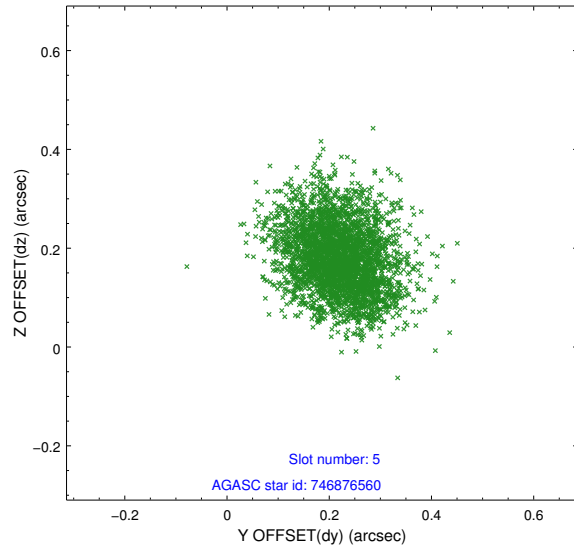
### 2.4.1 Slot 3



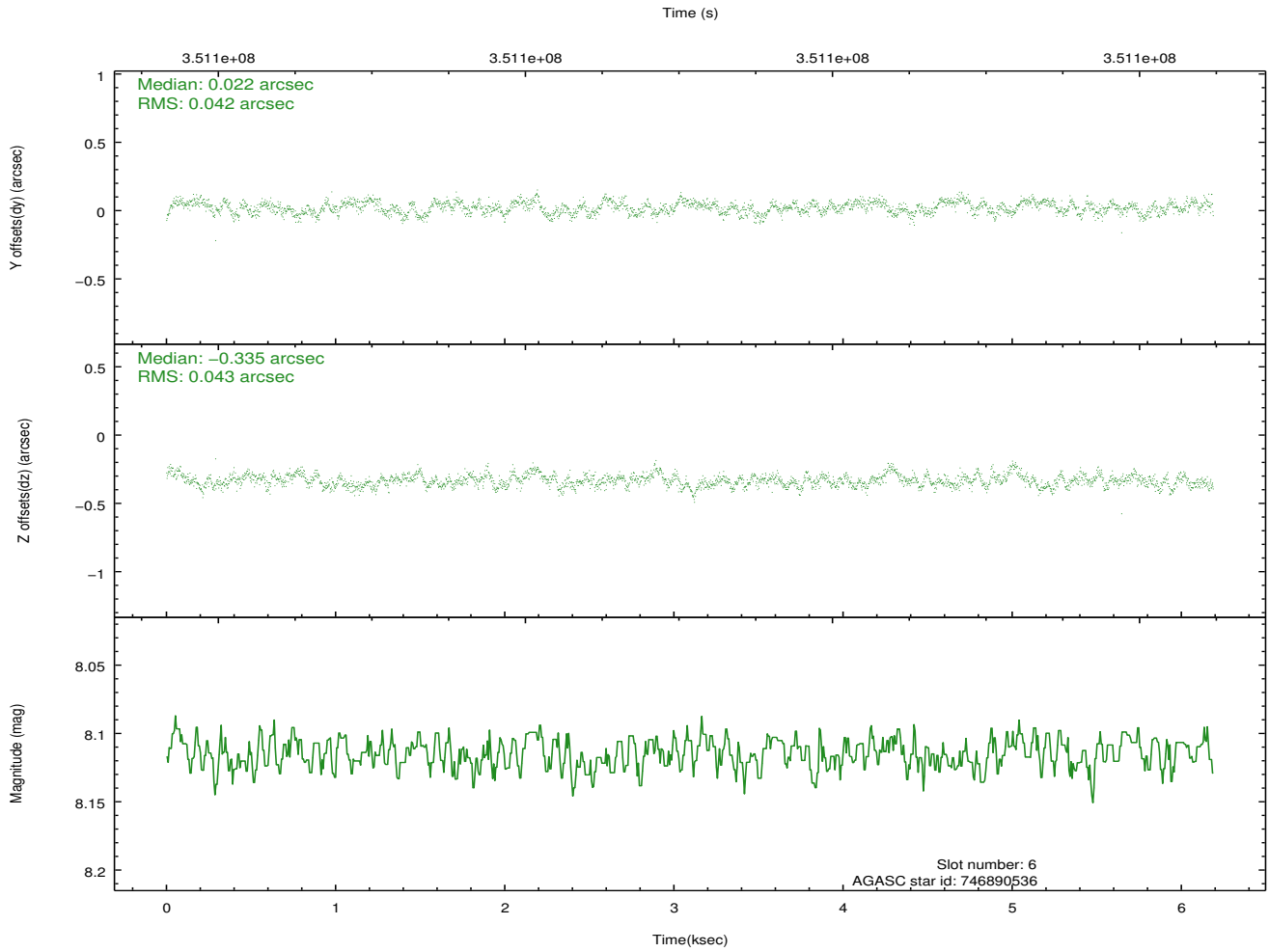
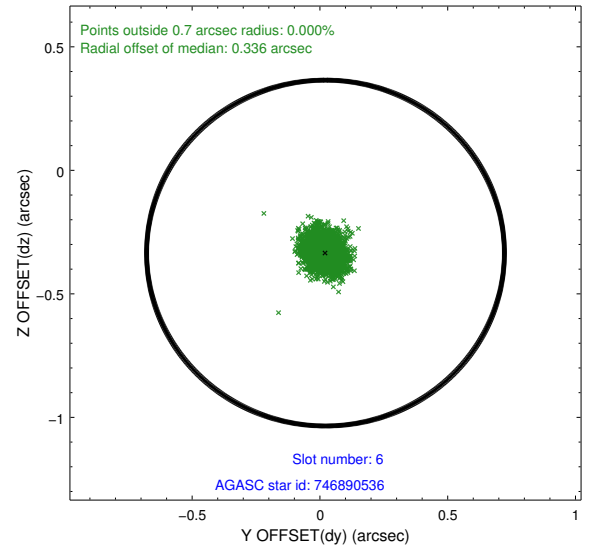
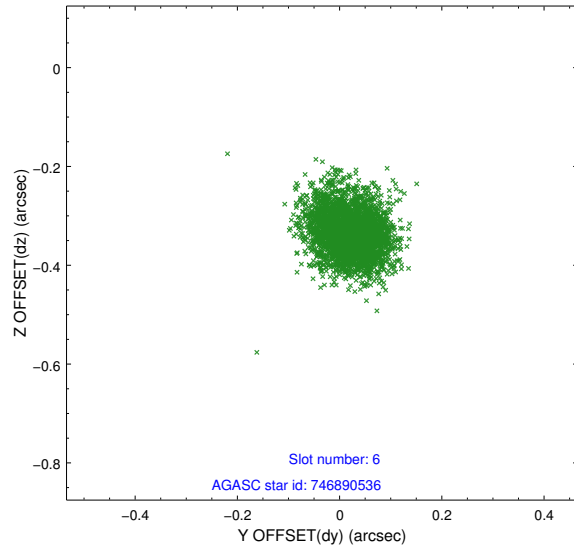
## 2.4.2 Slot 4



### 2.4.3 Slot 5

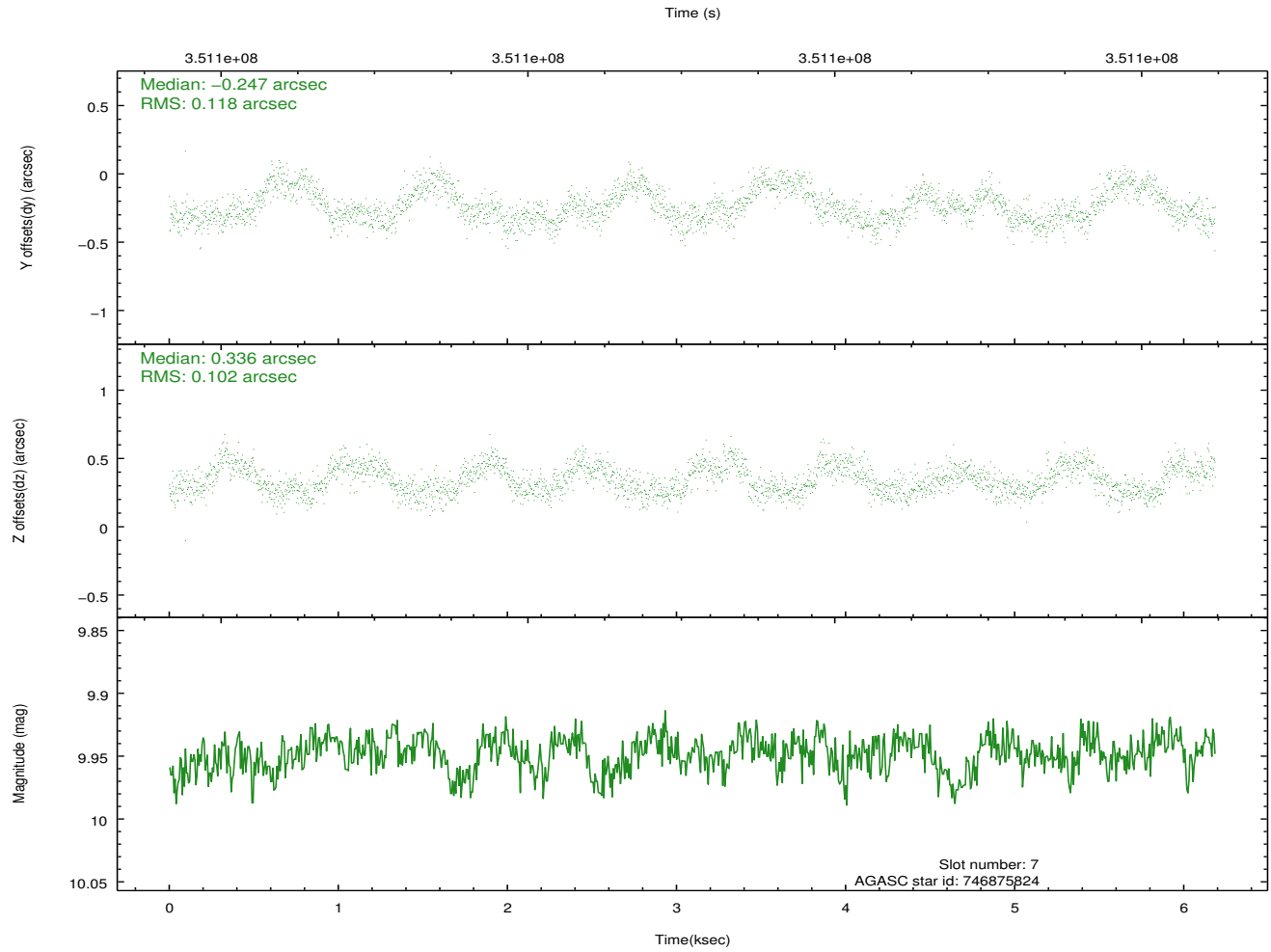
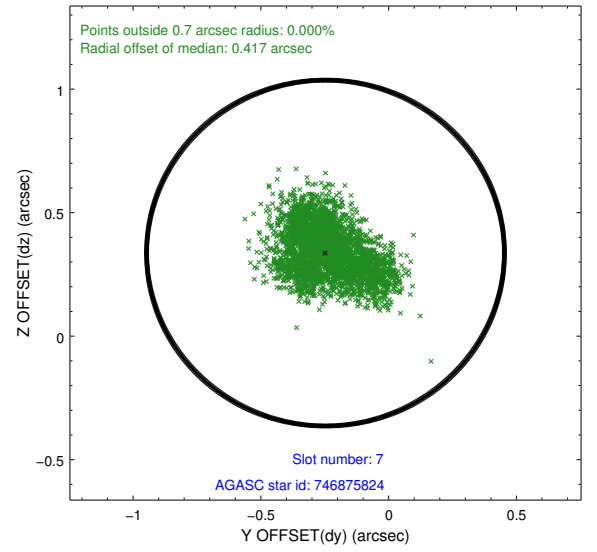
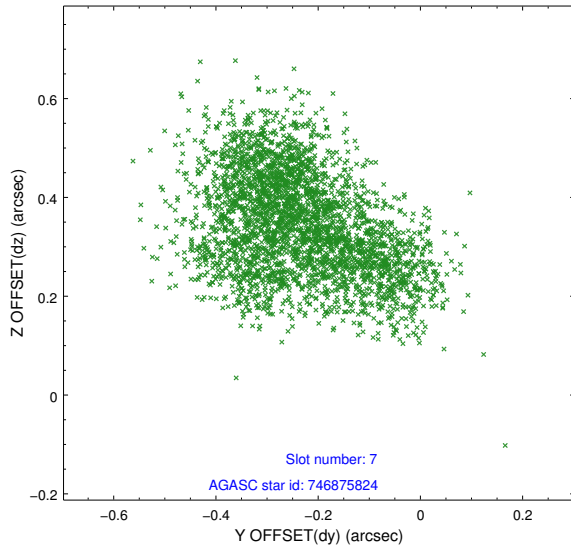


## 2.4.4 Slot 6



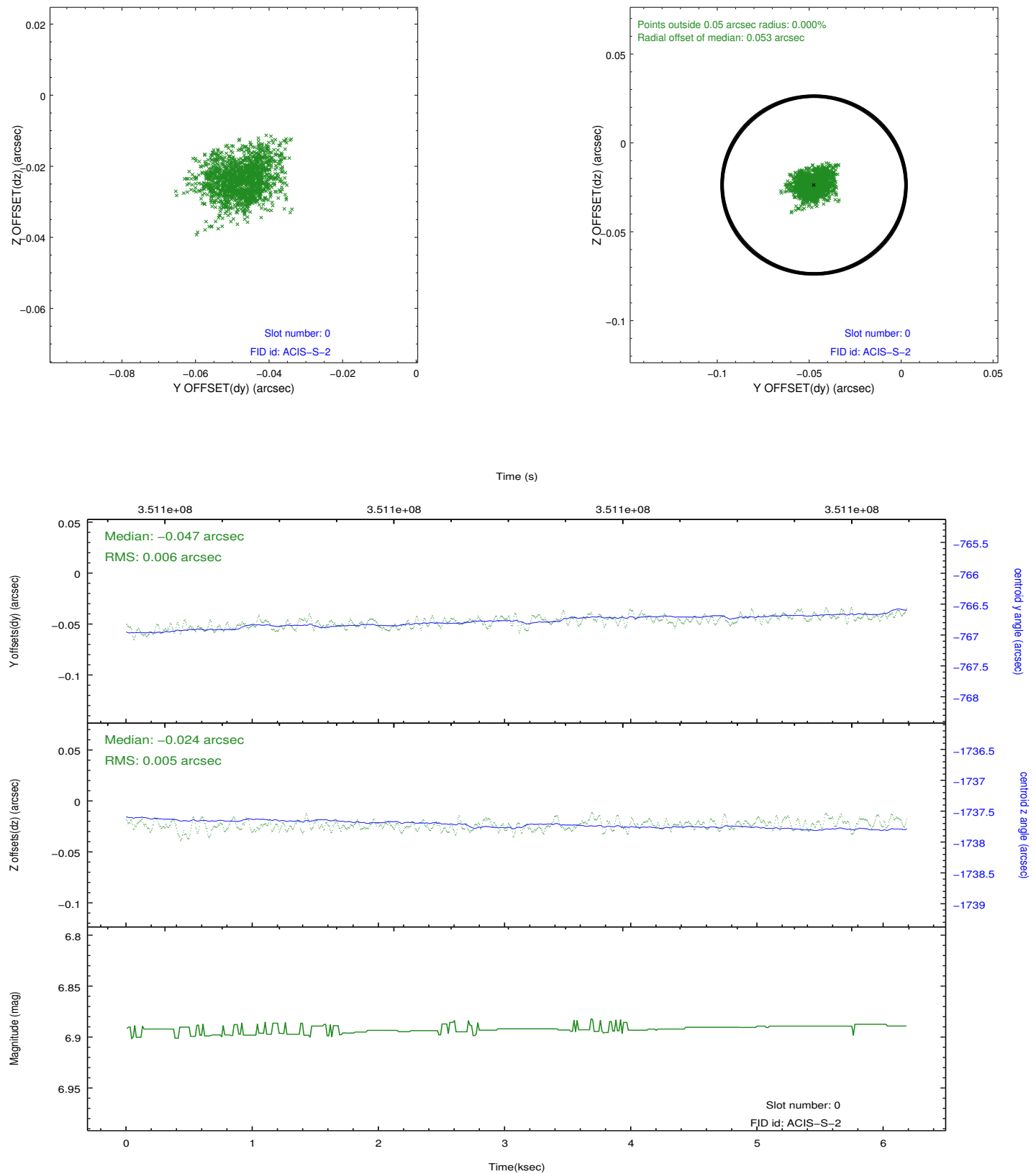


## 2.4.5 Slot 7

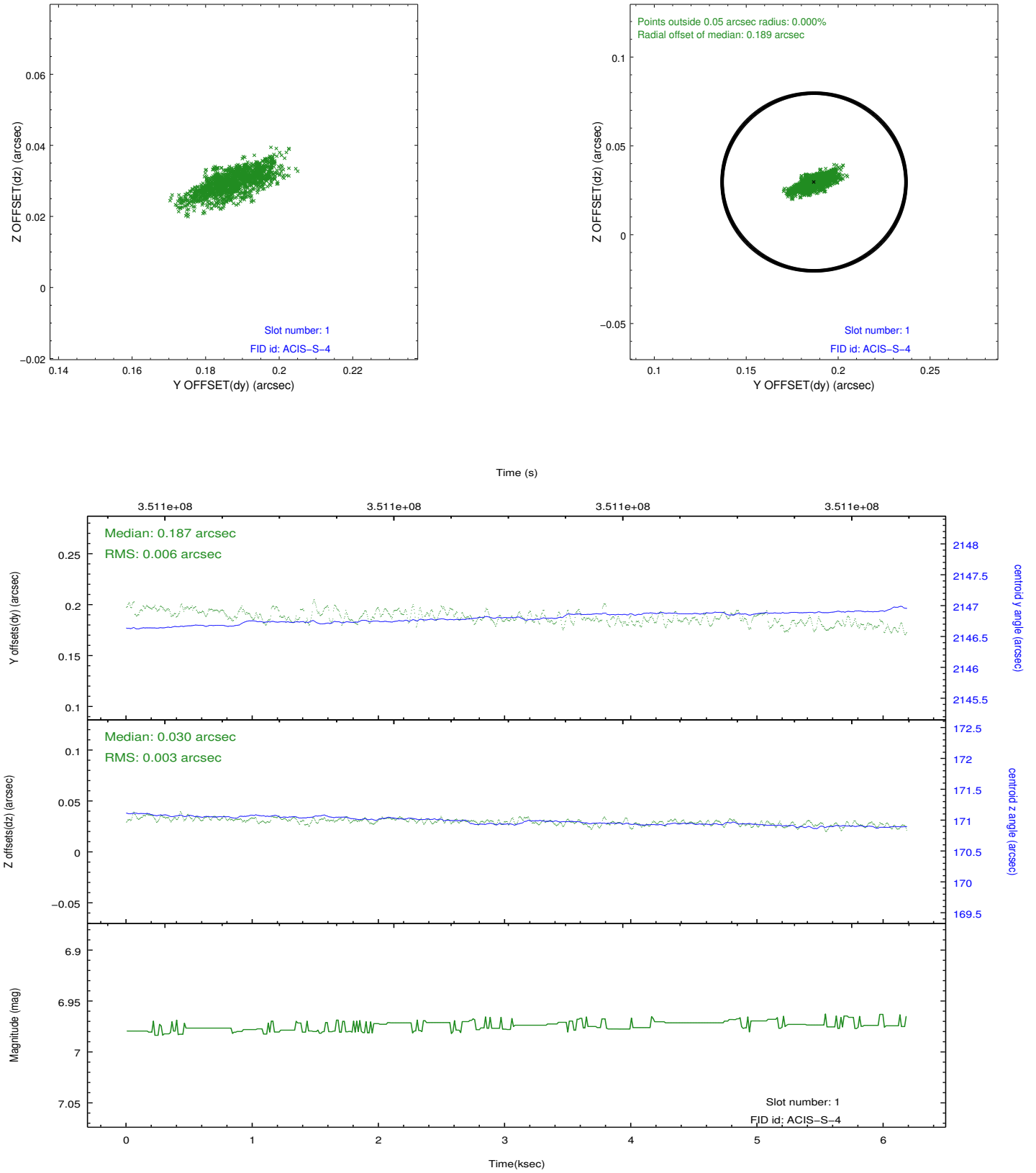


## 2.5 FID Slots

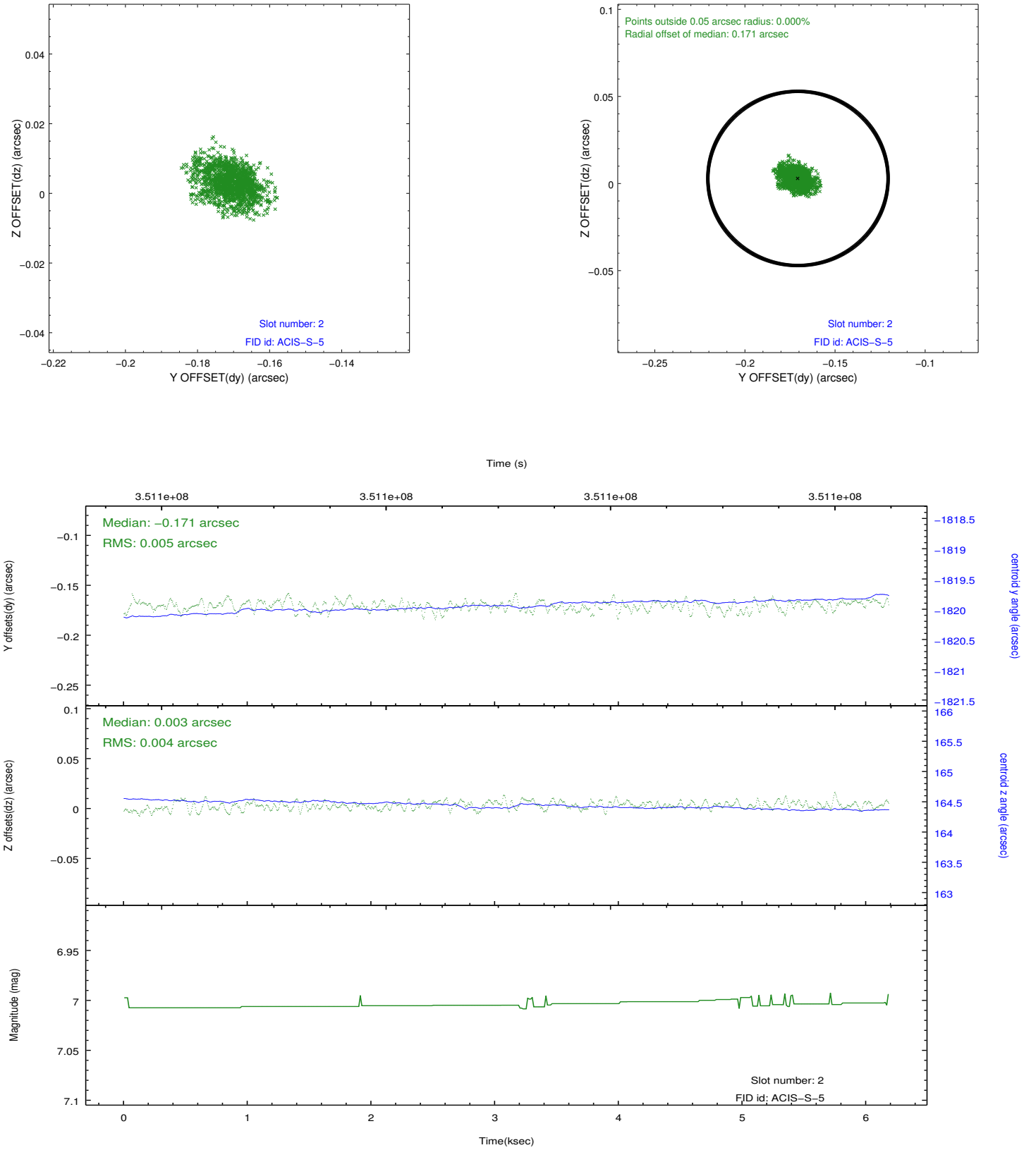
### 2.5.1 Slot 0



## 2.5.2 Slot 1



### 2.5.3 Slot 2



## A Summary

### A.1 Status

V&V Scientist	Beth Sundheim
V&V Date (YYYY-MM-DD)	2012.06.05
V&V Edition	1
V&V Disposition and Status	OK
V&V Charge Time	5.7567999785542

### A.2 Comments