

V&V Reference Report

L2 ASCDS Version : 8.4.5

Observation 10296 - L2 Version 2
Chandra X-Ray Center

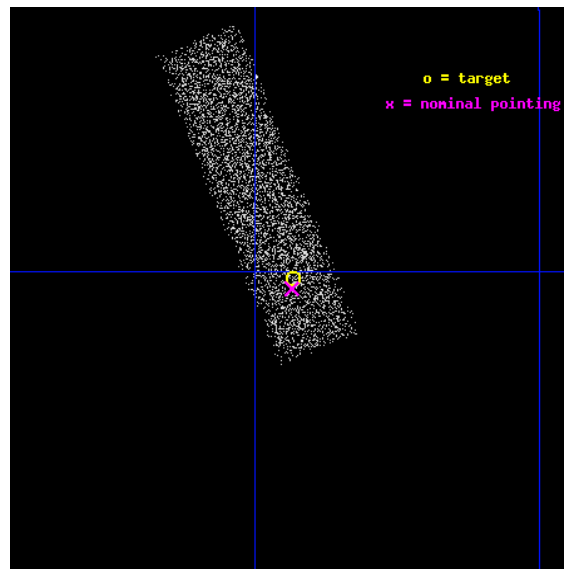
L2 Processing Date : Jun 11 2012

Contents

1	Front	2
2	OBI	3
2.1	OBI	3
2.1.1	Images	3
2.1.2	Bias	3
2.1.3	Parameters	4
2.1.4	Events	4
2.2	Compared Parameters	5
2.3	Aspect	6
2.4	Star Slots	9
2.4.1	Slot 3	9
2.4.2	Slot 4	10
2.4.3	Slot 5	11
2.4.4	Slot 6	12
2.4.5	Slot 7	13
2.5	FID Slots	14
2.5.1	Slot 0	14
2.5.2	Slot 1	15
2.5.3	Slot 2	16
A	Summary	17
A.1	Status	17
A.2	Comments	17

1 Front

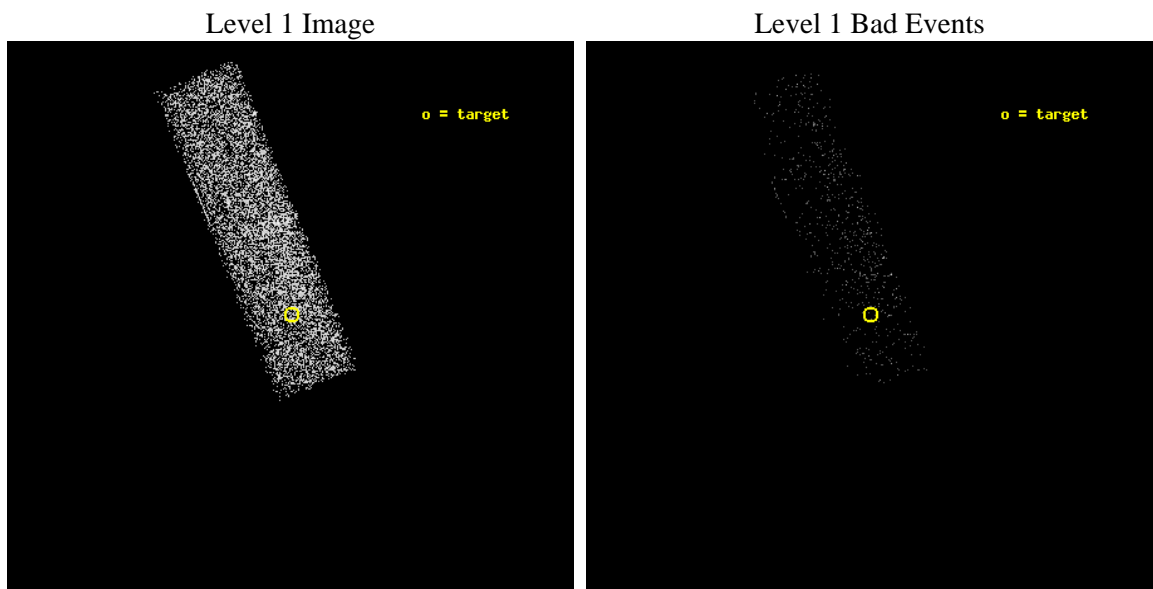
seq_num	701839	Sequence number
obs_id	10296	Observation id
title	Exploratory Chandra observations of low-metallicity AGN candidates	
observer	Prof. Trinh Thuan	Principal investigator
object	J1047+0739	Source name
dtcycle	0	
cycle	P	events from which exps? Prim/Second/Both
ra_targ	161.982917	Observer's specified target RA [deg]
dec_targ	7.664167	Observer's specified target Dec [deg]
ra_nom	161.98377223699	Nominal RA [deg]
dec_nom	7.6594928896397	Nominal Dec [deg]
roll_nom	247.95791083825	Nominal Roll [deg]
revision	2	Processing version of data
ontime	5026.9775042534	Sum of GTIs [s]
livetime	4781.6774510163	Livetime [s]
ontime7	5026.9775042534	Sum of GTIs [s]
l2events	5424	Number of level 2 events



2 OBI

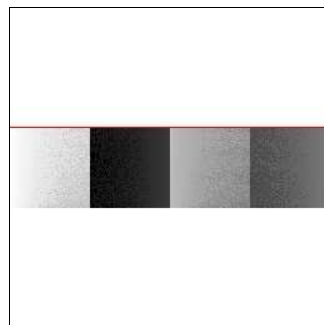
2.1 OBI

2.1.1 Images



2.1.2 Bias

Chip 7



2.1.3 Parameters

obi_num	1	Obi number	sched_exp_time	5000.000000	[s] Scheduled observation exposure time
ascdsver	8.4.5	Processing system revision	ontime	5026.9775042534	Sum of GTIs [s]
caldsver	4.4.10	 	ontime7	5026.9775042534	Sum of GTIs [s]
date	2012-06-11T12:48:45	Date and time of file creation	l1events	10672	Number of level 1 events
revision	2	Processing version of data			

2.1.4 Events

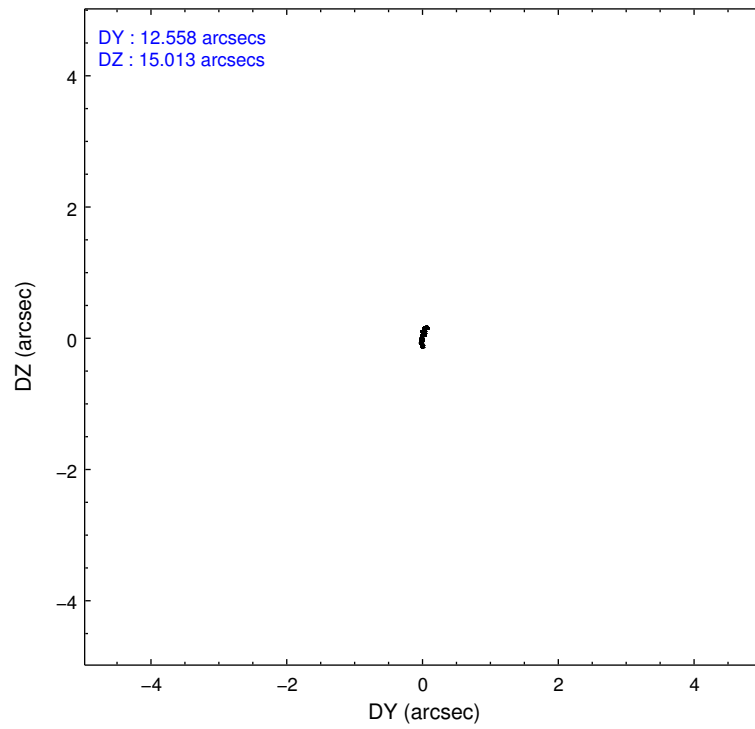
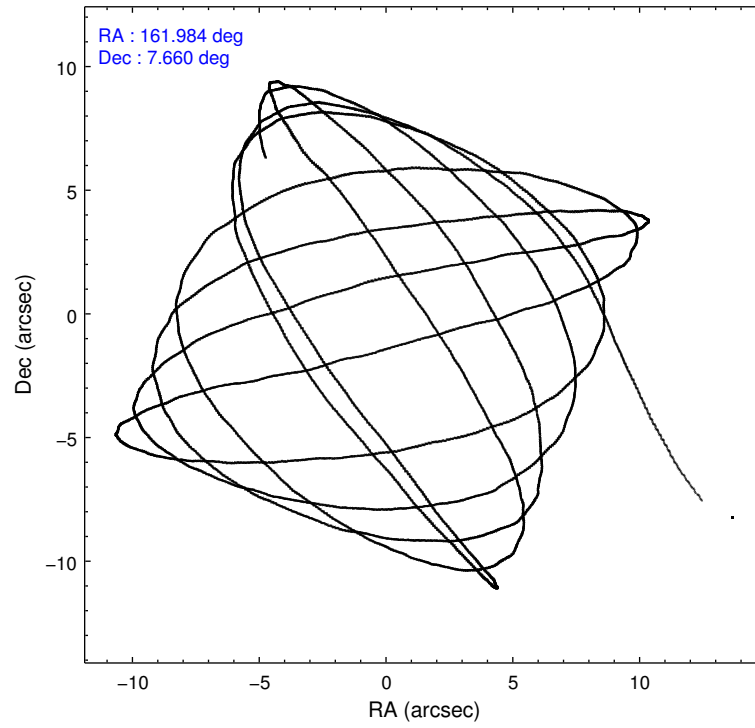
	ccd 7
level 1 events	10672
rejected events	4985
rejected %	46%

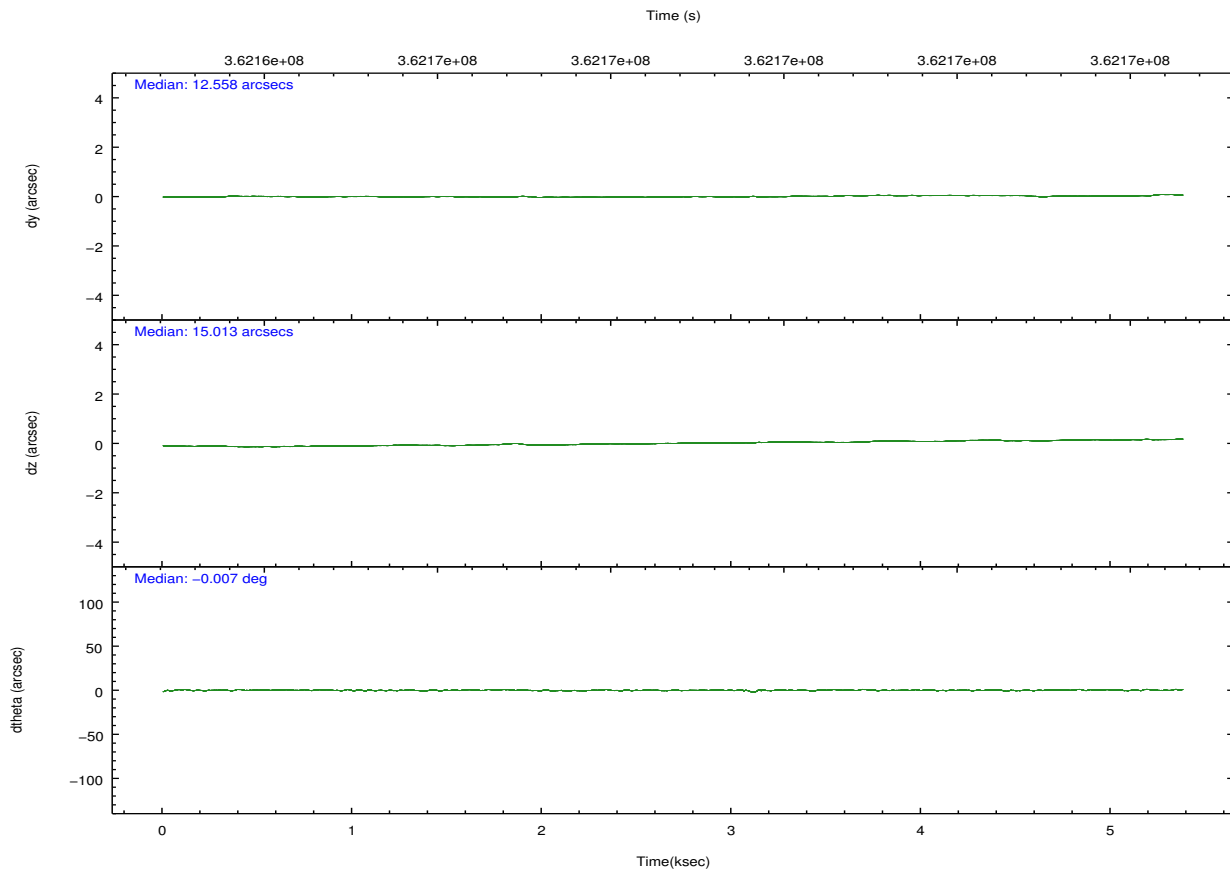
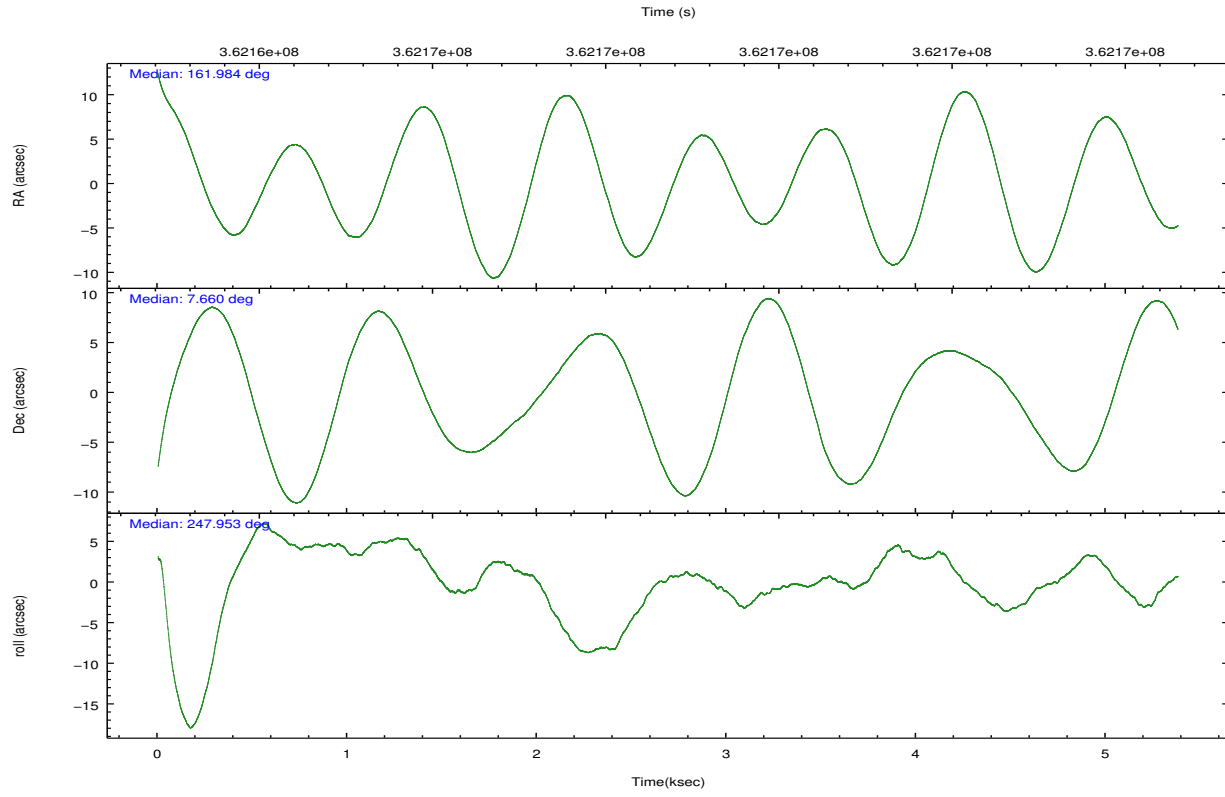
	ccd 7
grade 0 events	636
	5%
grade 1 events	21
	0%
grade 2 events	1186
	11%
grade 3 events	663
	6%
grade 4 events	659
	6%
grade 5 events	1081
	10%
grade 6 events	2543
	23%
grade 7 events	3883
	36%

2.2 Compared Parameters

Parameter	Planned	Actual	Parameter	Planned	Actual
Instrument	ACIS	ACIS	Obspar format version number	7	7
Detector	ACIS-7	ACIS-7	Obspar file type	PREDICTED	ACTUAL
Grating	NONE	NONE	Obspar update status	NONE	UPDATED
Data mode	VFAINT	VFAINT	Number of optional ACIS chips dropped	0	0
Observation mode	POINTING	POINTING	On-chip summing requested	N	N
[deg] Pointing RA	161.979544	161.9837722369943	Subarray requested	CUSTOM	1/4
[deg] Pointing Dec	7.686409	7.659492889639656	Subarray start row	385	385
[deg] Pointing Roll	247.801824	247.9579108382523	Subarray row count	256	256
[mm] SIM focus pos	-0.684267	-0.6828225247311905	Alternating exposures requested	N	N
[mm] SIM defocus	0	0.001444936568705701	[s] Primary exposure time	0.000000	0.8
[mm] SIM translation stage pos	-190.132523	-190.1400660498719			
[mm] SIM translation stage offset	0	0.00754346686406393			
[s] Observation start time (MET)	362165057.184000	362163156.39366			
Observation start date	2009-06-23T17:23:11	2009-06-23T16:52:36			
[s] Observation end time (MET)	362170057.184000	362170687.58153			
Observation end date	2009-06-23T18:46:31	2009-06-23T18:58:07			
Read mode	TIMED	TIMED			

2.3 Aspect



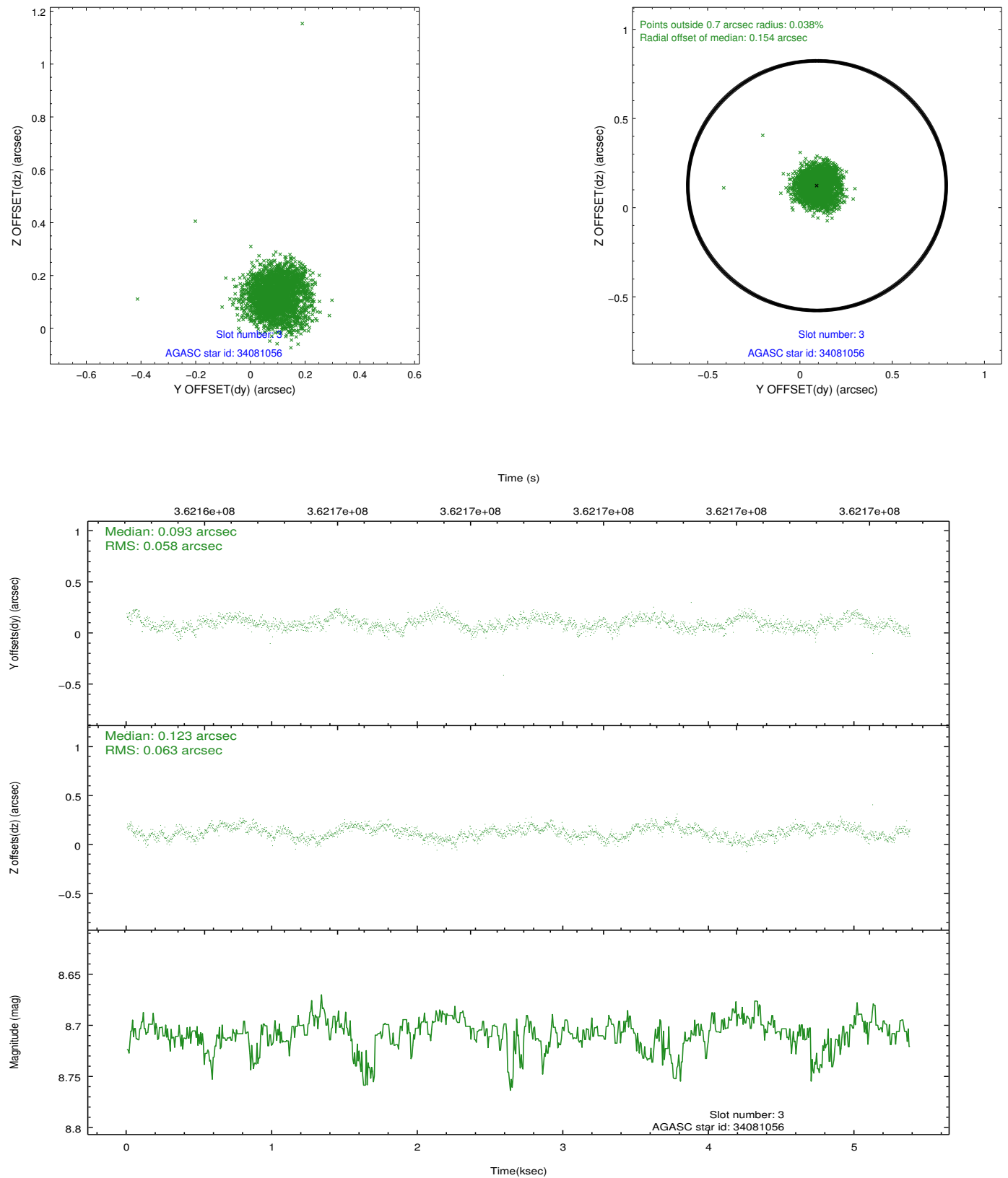


Slot Statistics

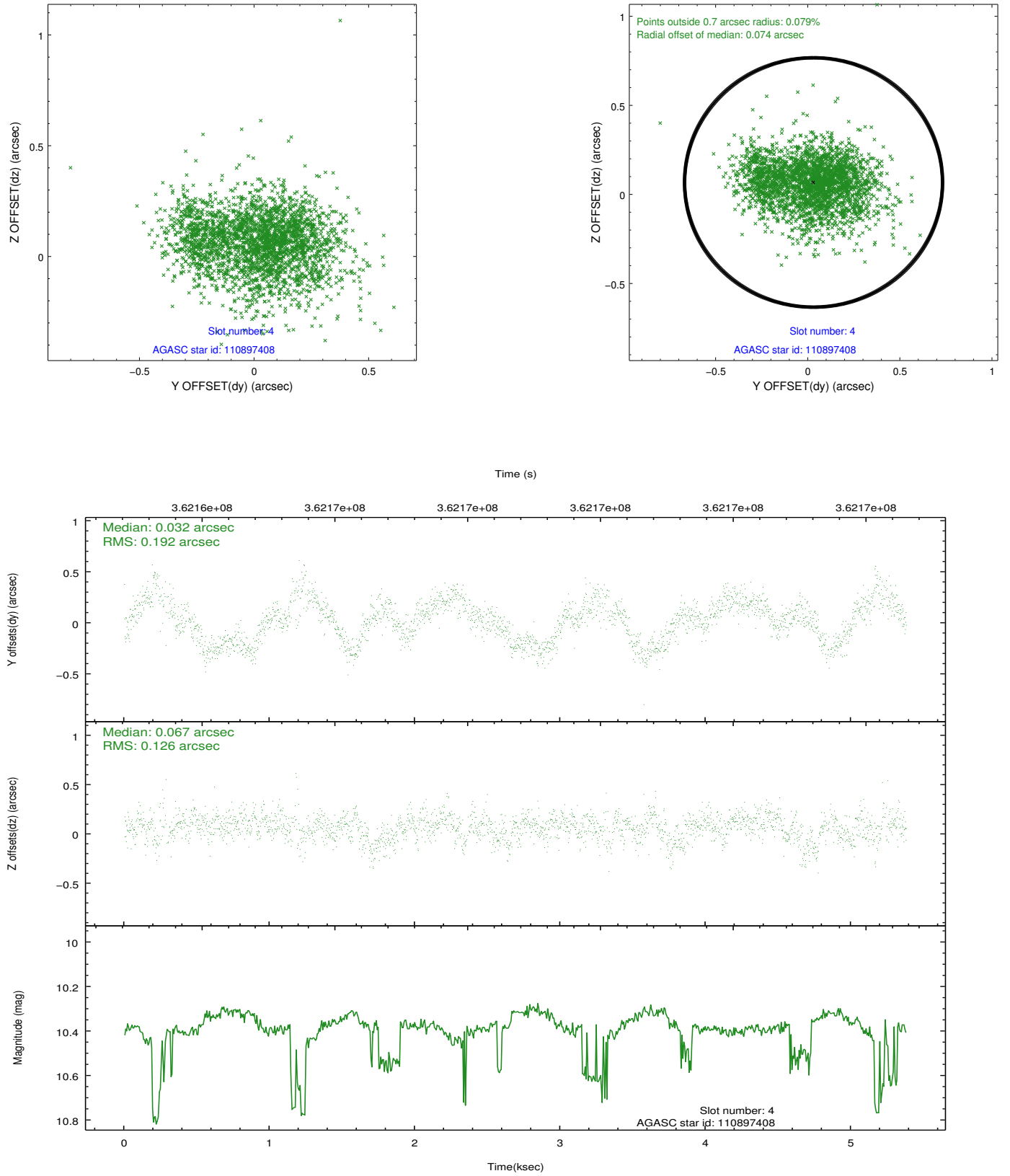
slot	status	id	mag	n_pts	med_dy	med_dz	dr1	dr2	ra	dec	mean_y	mean_z
0	FID	ACIS-S-1	6.96	1312	0.057	-0.040	0.008	0.013	0.000000	0.000000	930.66	-1732.05
1	FID	ACIS-S-5	6.99	1312	-0.107	0.038	0.007	0.012	0.000000	0.000000	-1817.91	164.37
2	FID	ACIS-S-6	7.09	1312	0.028	0.014	0.008	0.013	0.000000	0.000000	394.92	809.62
3	GUIDE	34081056	8.71	2618	0.093	0.123	0.090	0.140	162.119383	7.010257	2065.70	1382.96
4	GUIDE	110897408	10.38	2545	0.032	0.067	0.250	0.391	161.293297	7.675200	962.15	-2251.57
5	GUIDE	110897456	10.03	2619	0.077	-0.157	0.152	0.259	162.564711	7.542483	-309.66	2128.00
6	GUIDE	110892176	9.17	2621	-0.089	-0.012	0.101	0.192	162.069113	8.356059	-2352.13	-614.63
7	GUIDE	110894472	9.89	2617	-0.076	0.011	0.212	0.358	161.989294	8.357224	-2249.23	-880.30

2.4 Star Slots

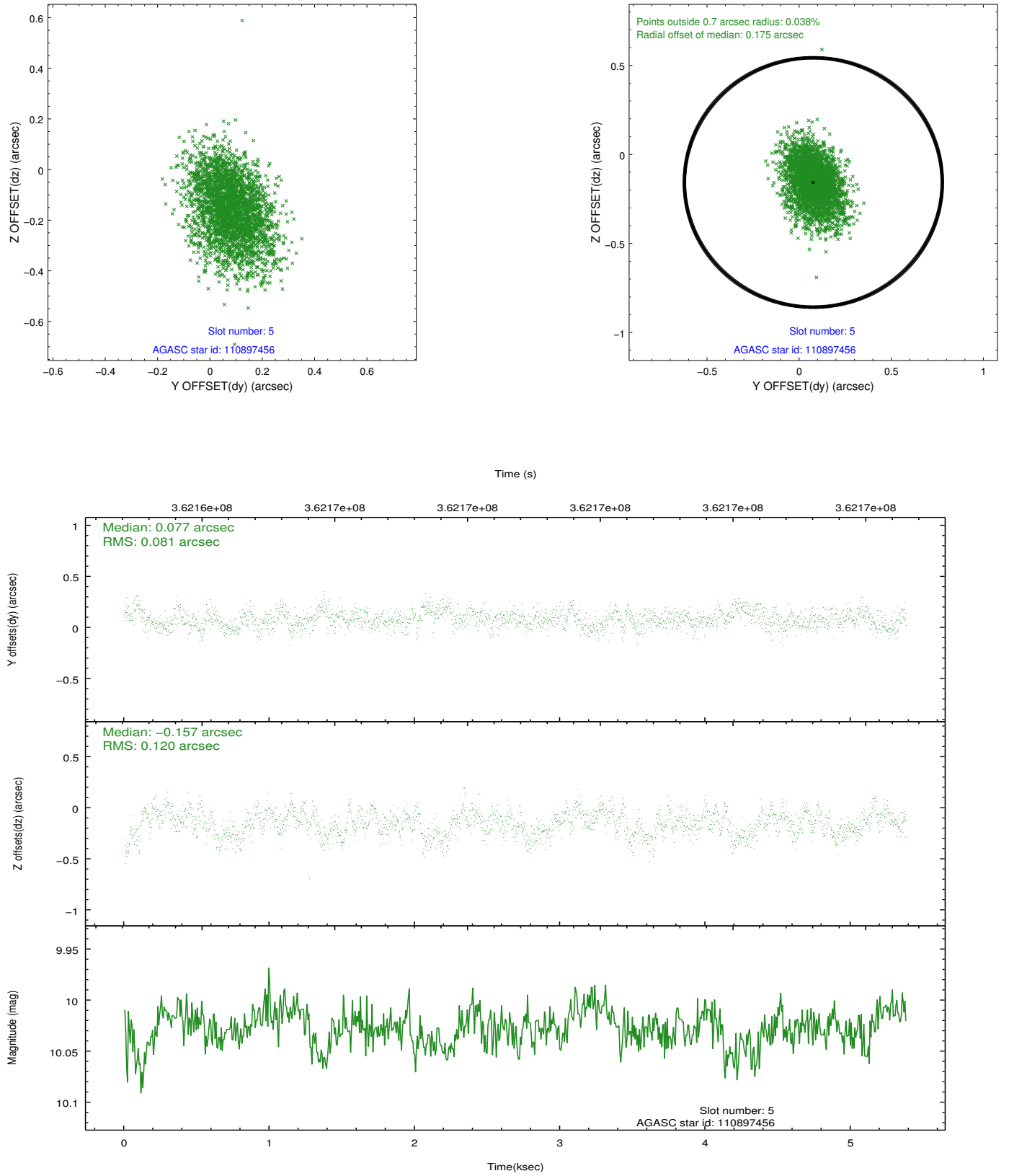
2.4.1 Slot 3



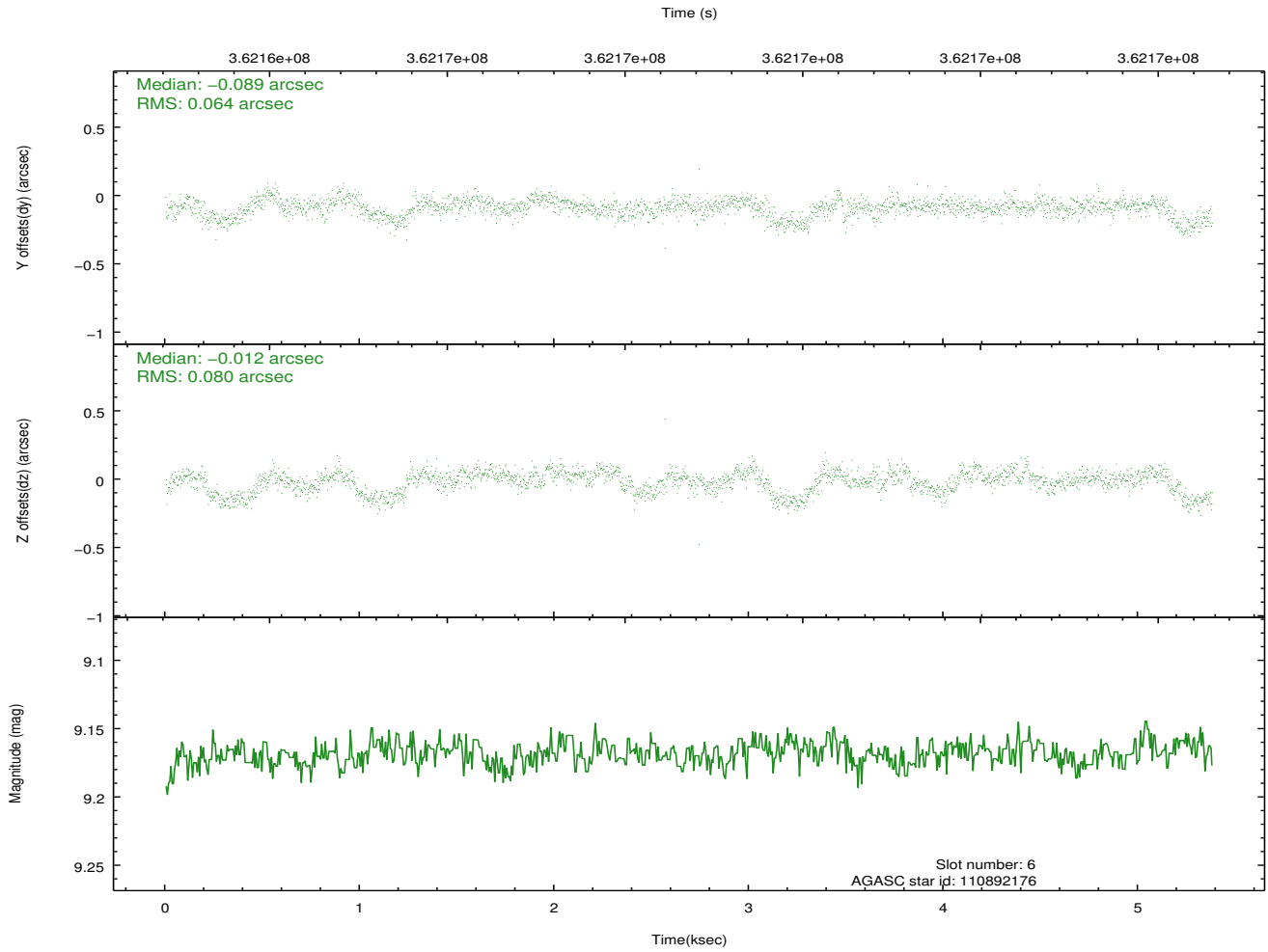
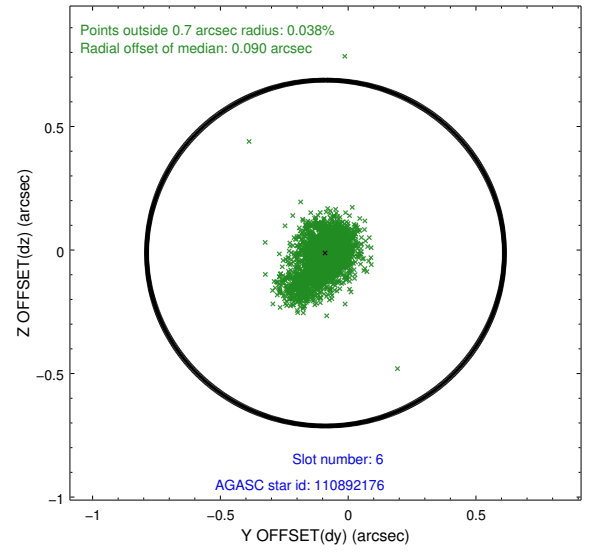
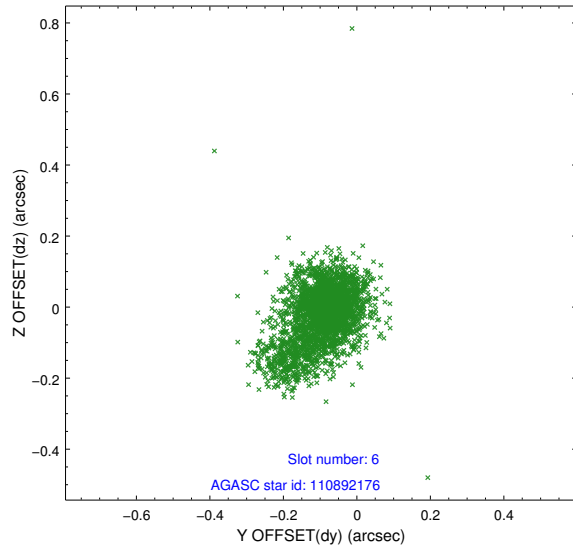
2.4.2 Slot 4



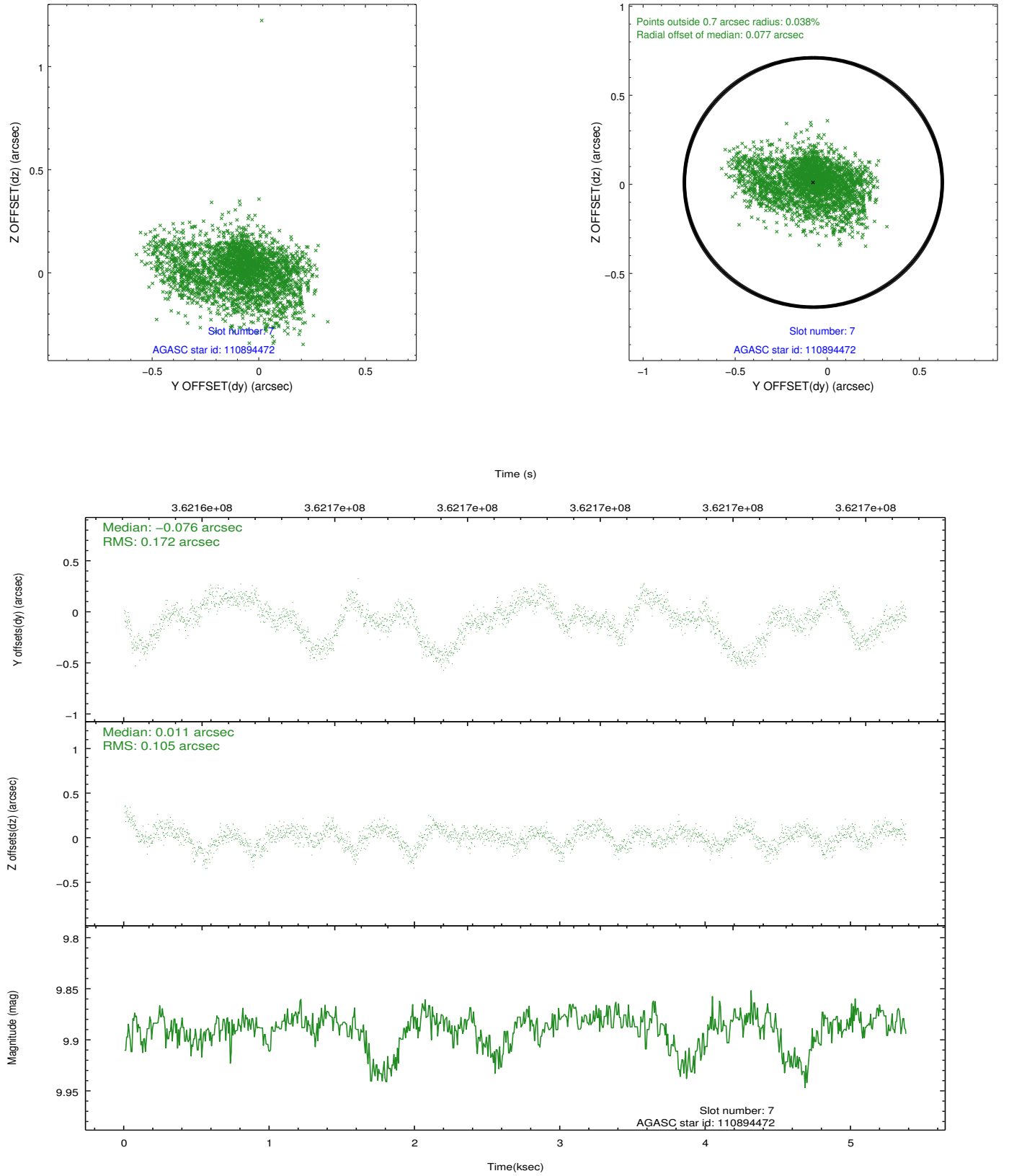
2.4.3 Slot 5



2.4.4 Slot 6

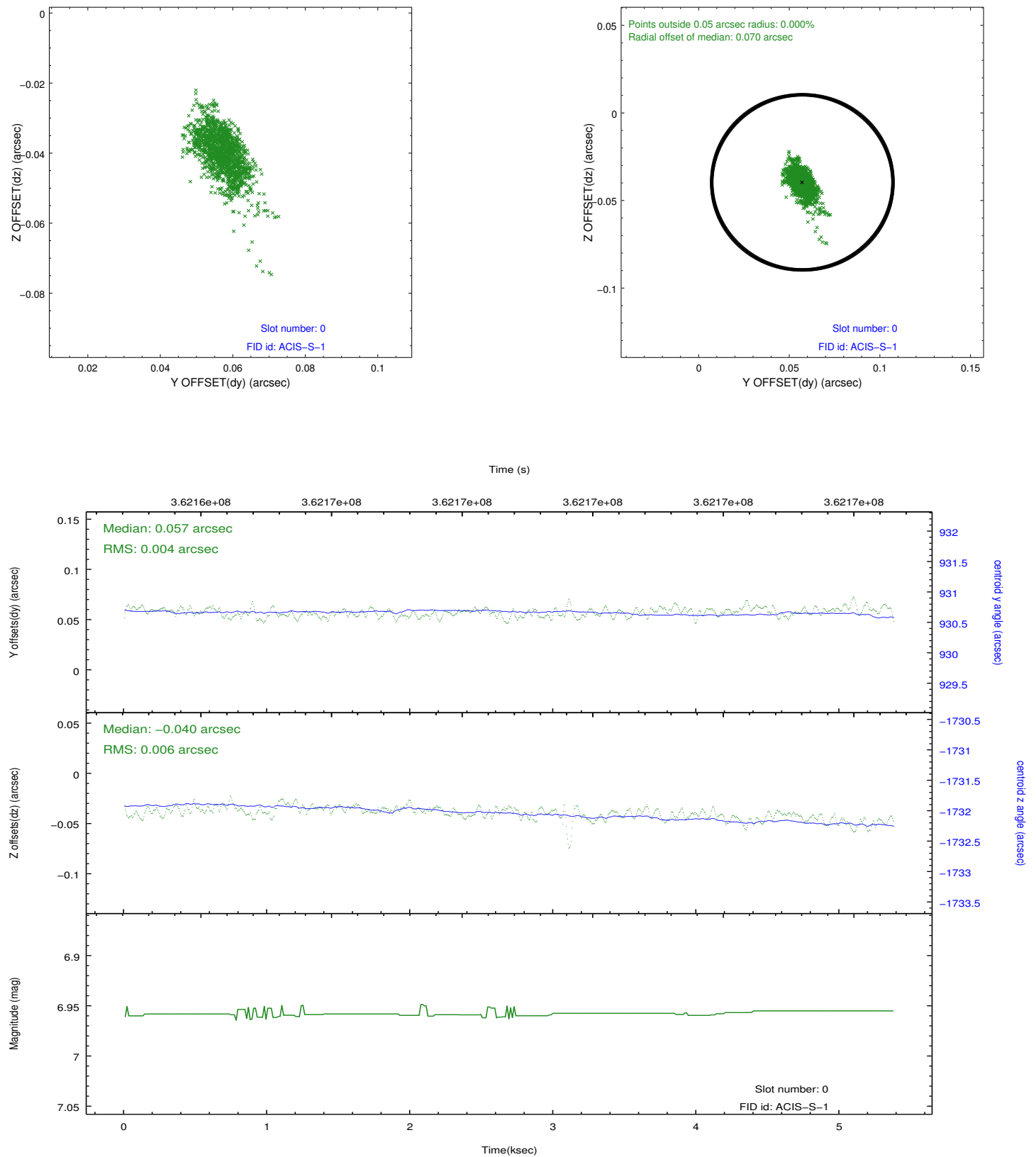


2.4.5 Slot 7

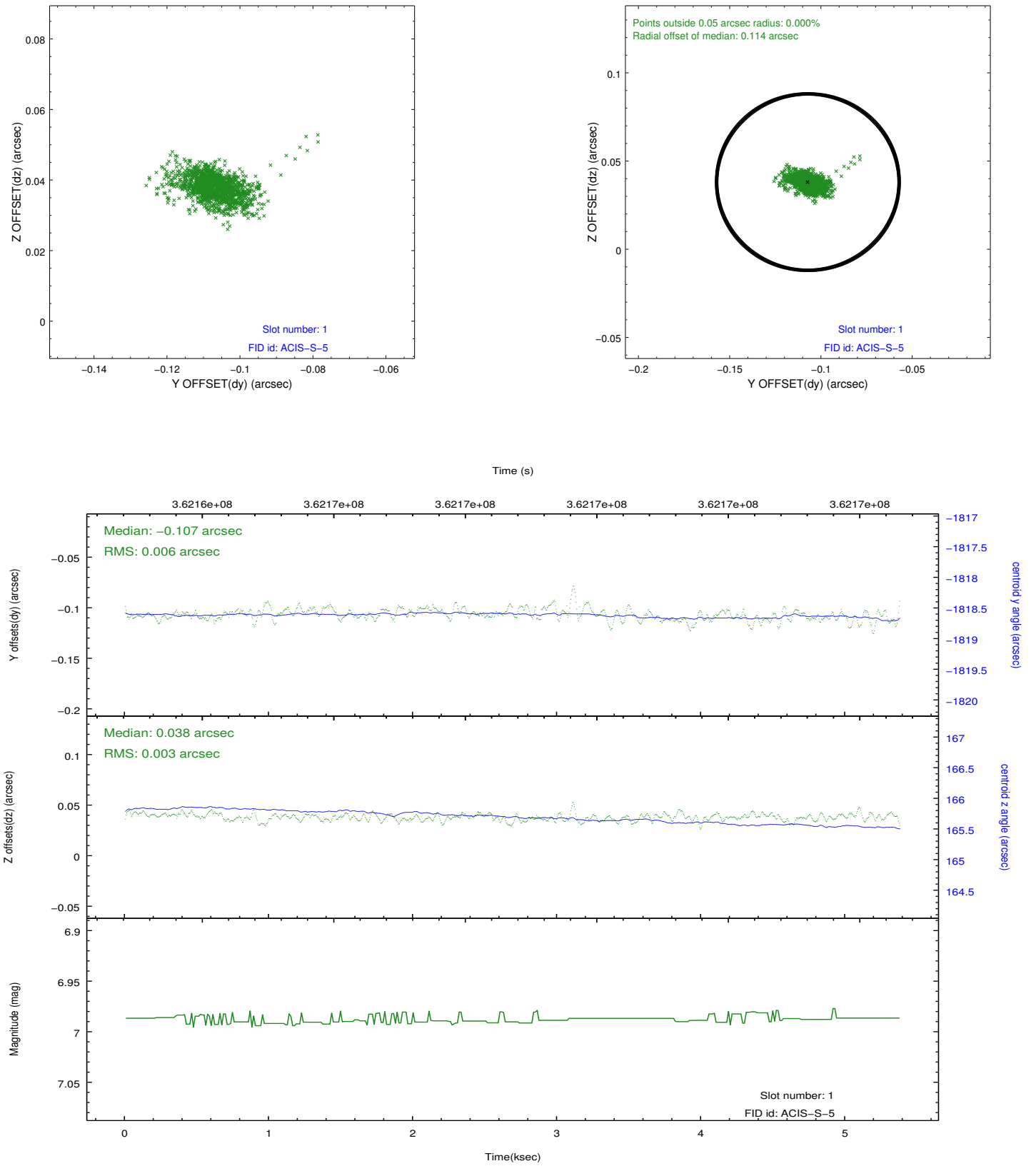


2.5 FID Slots

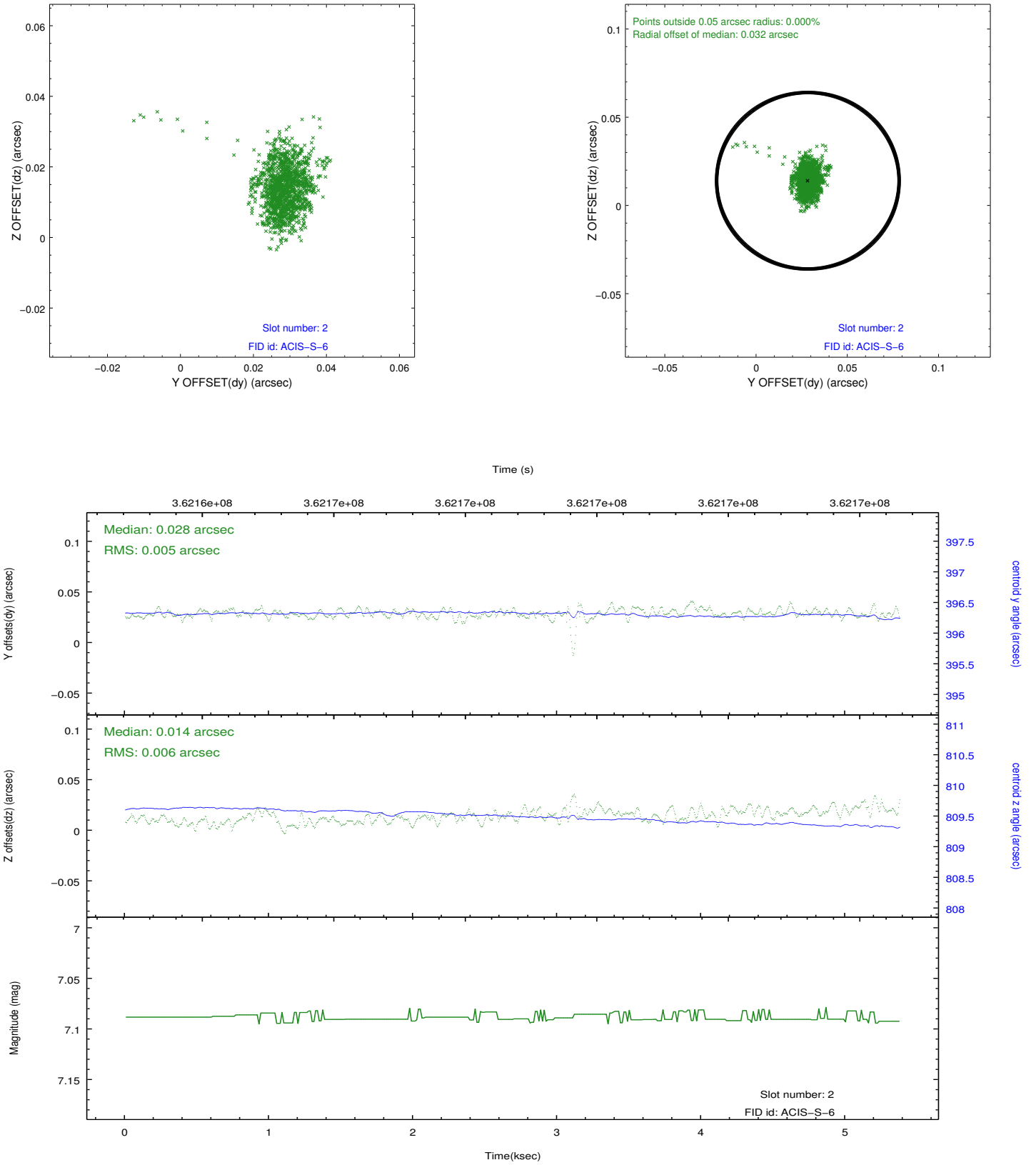
2.5.1 Slot 0



2.5.2 Slot 1



2.5.3 Slot 2



A Summary

A.1 Status

V&V Scientist	Jen Lauer
V&V Date (YYYY-MM-DD)	2012.06.14
V&V Edition	1
V&V Disposition and Status	OK
V&V Charge Time	5.02800007

A.2 Comments