

V&V Reference Report

L2 ASCDS Version : 8.4.4

Observation 9865 - L2 Version 2
Chandra X-Ray Center

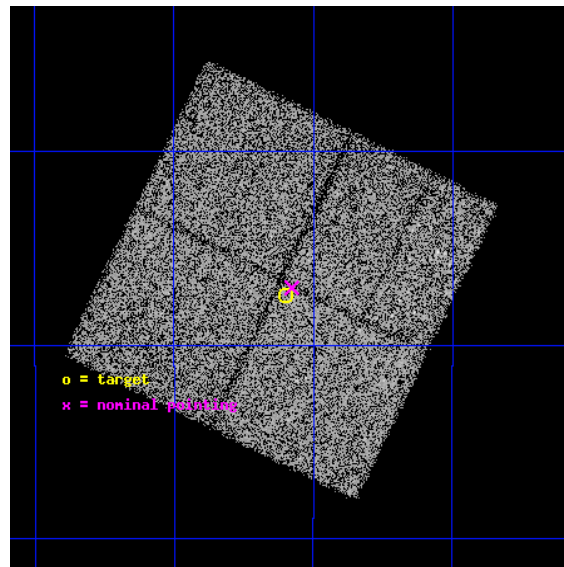
L2 Processing Date : May 16 2012

Contents

1	Front	2
2	OBI	3
2.1	OBI	3
2.1.1	Images	3
2.1.2	Bias	3
2.1.3	Parameters	4
2.1.4	Events	4
2.2	Compared Parameters	5
2.3	Aspect	6
2.4	Star Slots	9
2.4.1	Slot 3	9
2.4.2	Slot 4	10
2.4.3	Slot 5	11
2.4.4	Slot 6	12
2.4.5	Slot 7	13
2.5	FID Slots	14
2.5.1	Slot 0	14
2.5.2	Slot 1	15
2.5.3	Slot 2	16
A	Summary	17
A.1	Status	17
A.2	Comments	17

1 Front

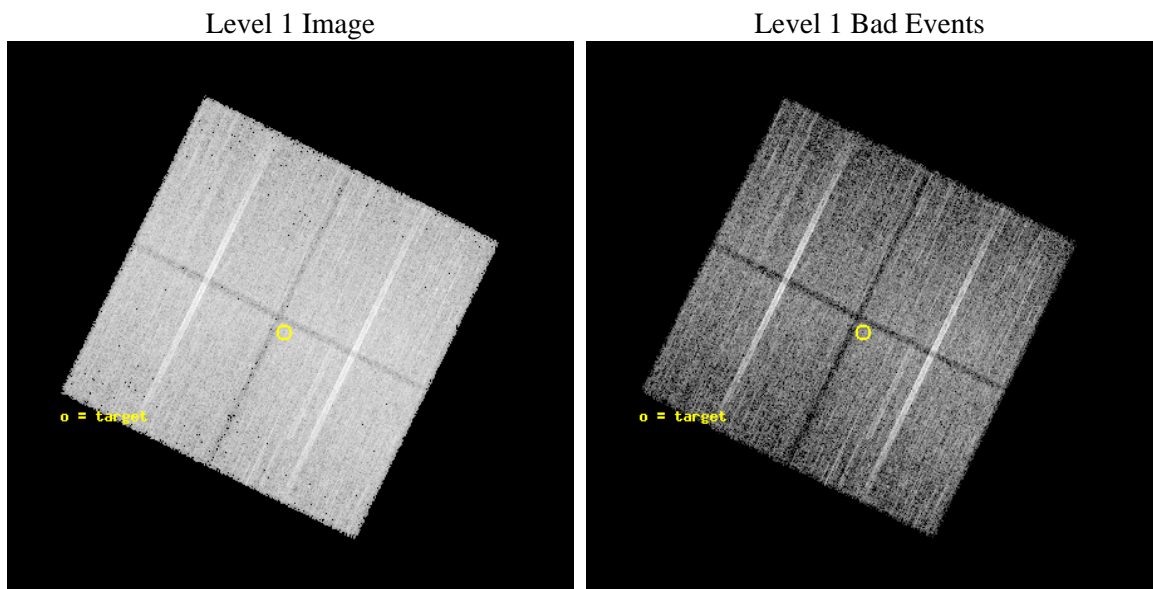
seq_num	200513	Sequence number
obs_id	9865	Observation id
title	Effects of massive star radiation on circumstellar disks evolution in the Eagle Nebula	Proposal title
observer	Dr. Mario Guarcello	Principal investigator
object	NGC 6611	Source name
dtcycle	0	
cycle	P	events from which exps? Prim/Second/Both
ra_targ	274.9	Observer's specified target RA [deg]
dec_targ	-13.79	Observer's specified target Dec [deg]
ra_nom	274.89422653197	Nominal RA [deg]
dec_nom	-13.784131720371	Nominal Dec [deg]
roll_nom	116.2073053415	Nominal Roll [deg]
revision	2	Processing version of data
ontime	16721.359178185	Sum of GTIs [s]
livetime	16502.882310437	Livetime [s]
ontime0	16721.359178185	Sum of GTIs [s]
ontime1	16721.359118521	Sum of GTIs [s]
ontime2	16718.218177974	Sum of GTIs [s]
ontime3	16721.359178185	Sum of GTIs [s]
l2events	73413	Number of level 2 events



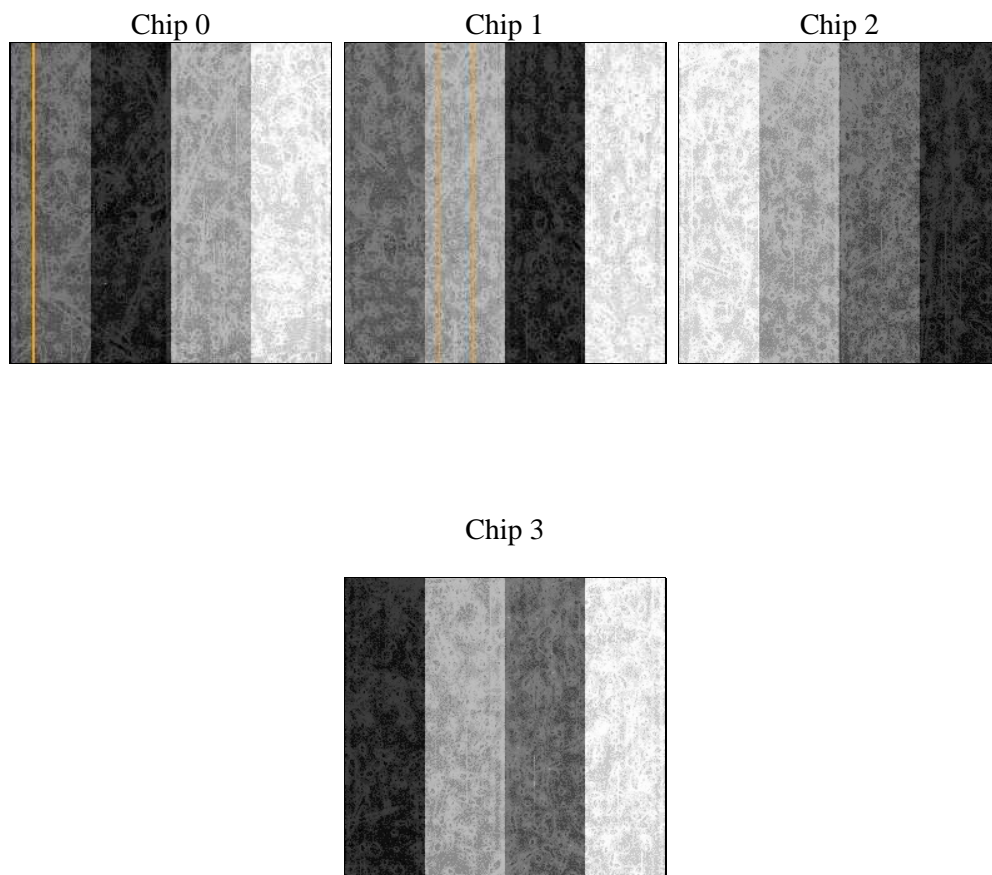
2 OBI

2.1 OBI

2.1.1 Images



2.1.2 Bias



2.1.3 Parameters

obi_num	0	Obi number	sched_exp_time	16608.054000	[s] Scheduled observation exposure time
ascdsver	8.4.4	Processing system revision	ontime	16721.359178185	Sum of GTIs [s]
caldsver	4.4.9	 	ontime0	16721.359178185	Sum of GTIs [s]
date	2012-05-16T03:19:47	Date and time of file creation	ontime1	16721.359118521	Sum of GTIs [s]
revision	2	Processing version of data	ontime2	16718.218177974	Sum of GTIs [s]
			ontime3	16721.359178185	Sum of GTIs [s]
			l1events	634600	Number of level 1 events

2.1.4 Events

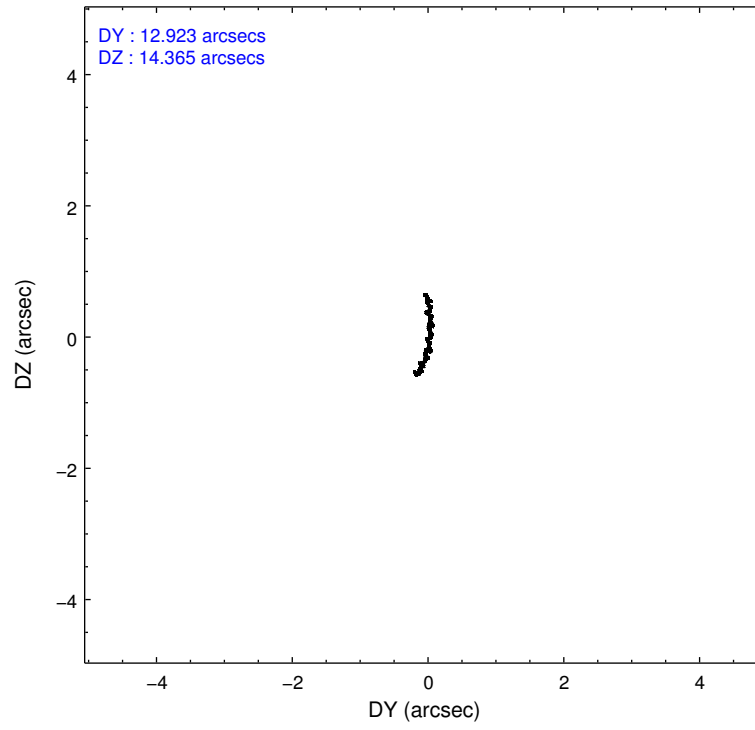
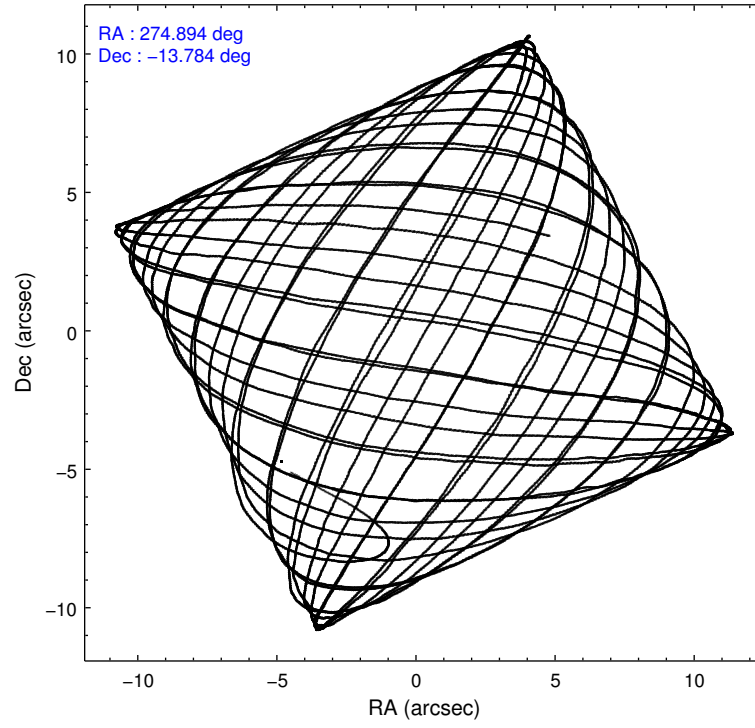
	ccd 0	ccd 1	ccd 2	ccd 3
level 1 events	150306	150596	167904	165794
rejected events	129807	129394	145802	144586
rejected %	86%	85%	86%	87%

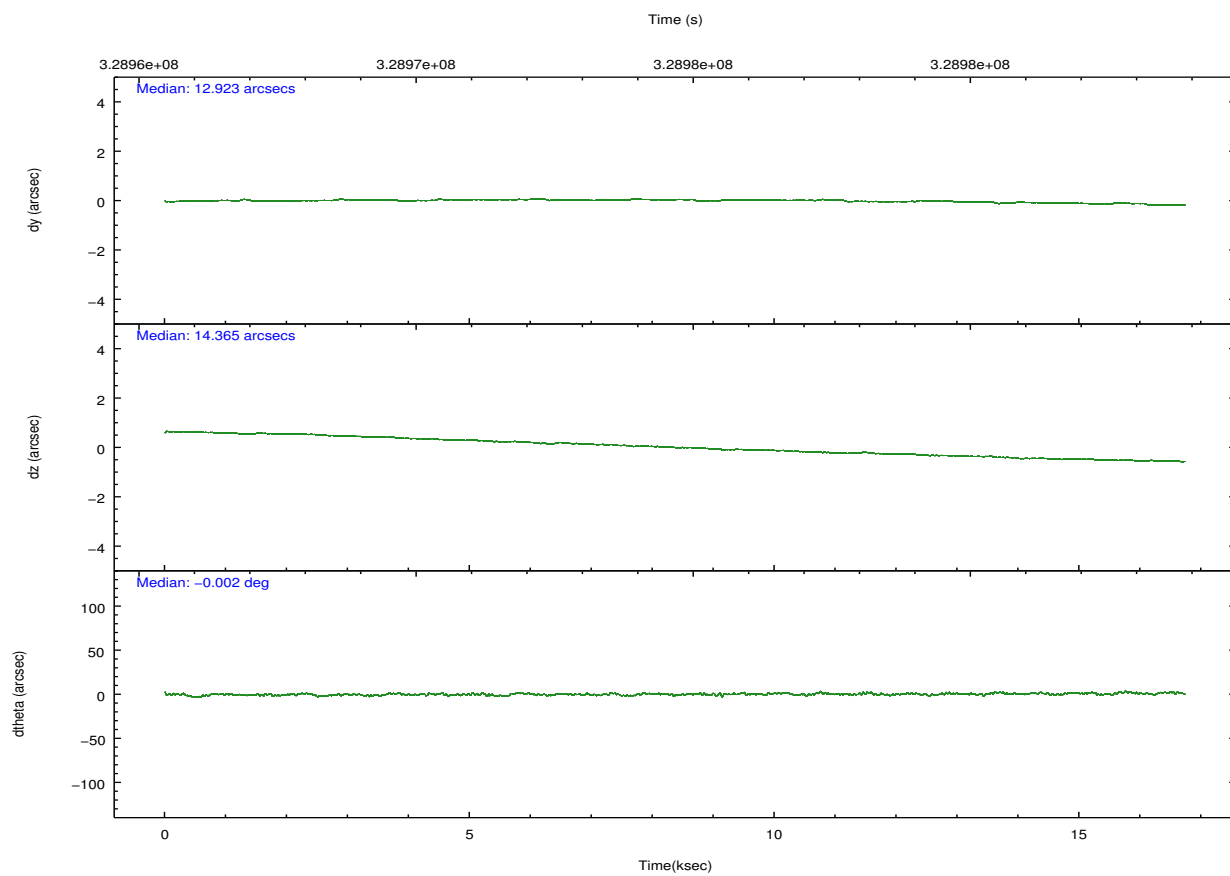
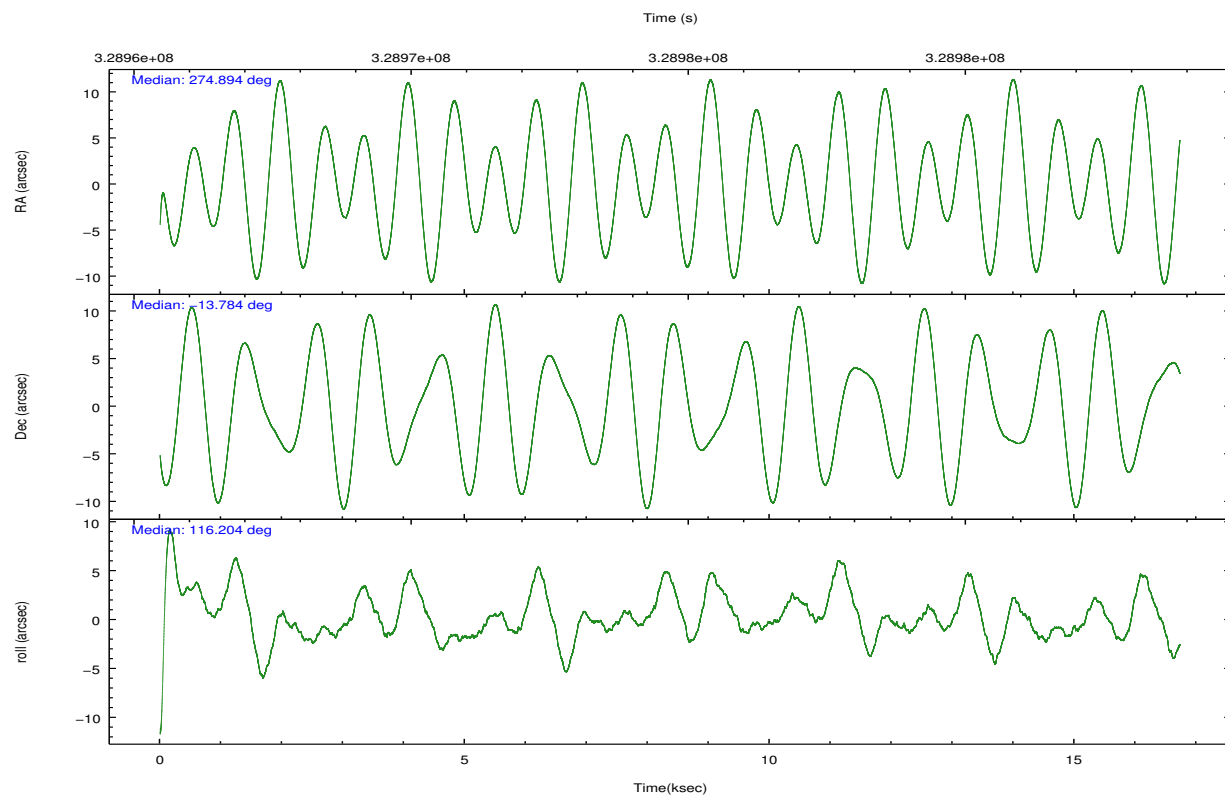
	ccd 0	ccd 1	ccd 2	ccd 3
grade 0 events	9226	8808	11120	10148
	6%	5%	6%	6%
grade 1 events	109	78	115	136
	0%	0%	0%	0%
grade 2 events	4738	4953	4608	4299
	3%	3%	2%	2%
grade 3 events	2033	2036	1875	1971
	1%	1%	1%	1%
grade 4 events	1852	2039	1896	1972
	1%	1%	1%	1%
grade 5 events	7122	7360	6882	7997
	4%	4%	4%	4%
grade 6 events	3568	4242	3457	3678
	2%	2%	2%	2%
grade 7 events	121658	121080	137951	135593
	80%	80%	82%	81%

2.2 Compared Parameters

Parameter	Planned	Actual	Parameter	Planned	Actual
Instrument	ACIS	ACIS	Obspar format version number	7	7
Detector	ACIS-0123	ACIS-0123	Obspar file type	PREDICTED	ACTUAL
Grating	NONE	NONE	Obspar update status	NONE	UPDATED
Data mode	FAINT	FAINT	Number of optional ACIS chips dropped	0	0
Observation mode	POINTING	POINTING	On-chip summing requested	N	N
[deg] Pointing RA	274.917866	274.8942265319652	Subarray requested	NONE	NONE
[deg] Pointing Dec	-13.799342	-13.78413172037104	Alternating exposures requested	N	N
[deg] Pointing Roll	116.004263	116.207305341503	[s] Primary exposure time	0.000000	3.1
[mm] SIM focus pos	-0.782348	-0.7809083437167272			
[mm] SIM defocus	0	0.001439871863259334			
[mm] SIM translation stage pos	-233.592463	-233.5874344608287			
[mm] SIM translation stage offset	0	-0.005018542100998502			
[s] Observation start time (MET)	328966438.184000	328965180.28102			
Observation start date	2008-06-04T11:32:53	2008-06-04T11:13:00			
[s] Observation end time (MET)	328983046.184000	328983277.16941			
Observation end date	2008-06-04T16:09:41	2008-06-04T16:14:37			
Read mode	TIMED	TIMED			

2.3 Aspect



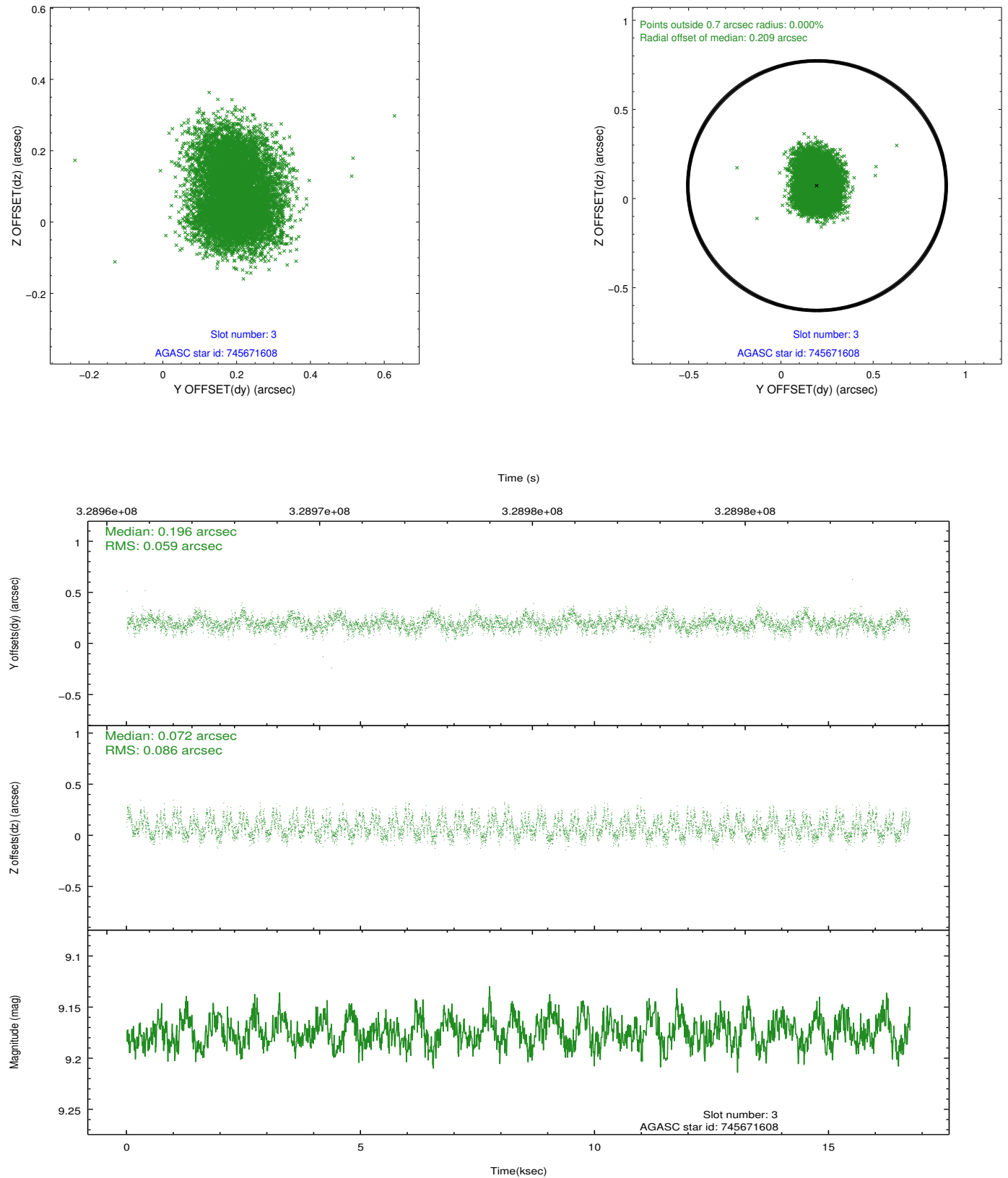


Slot Statistics

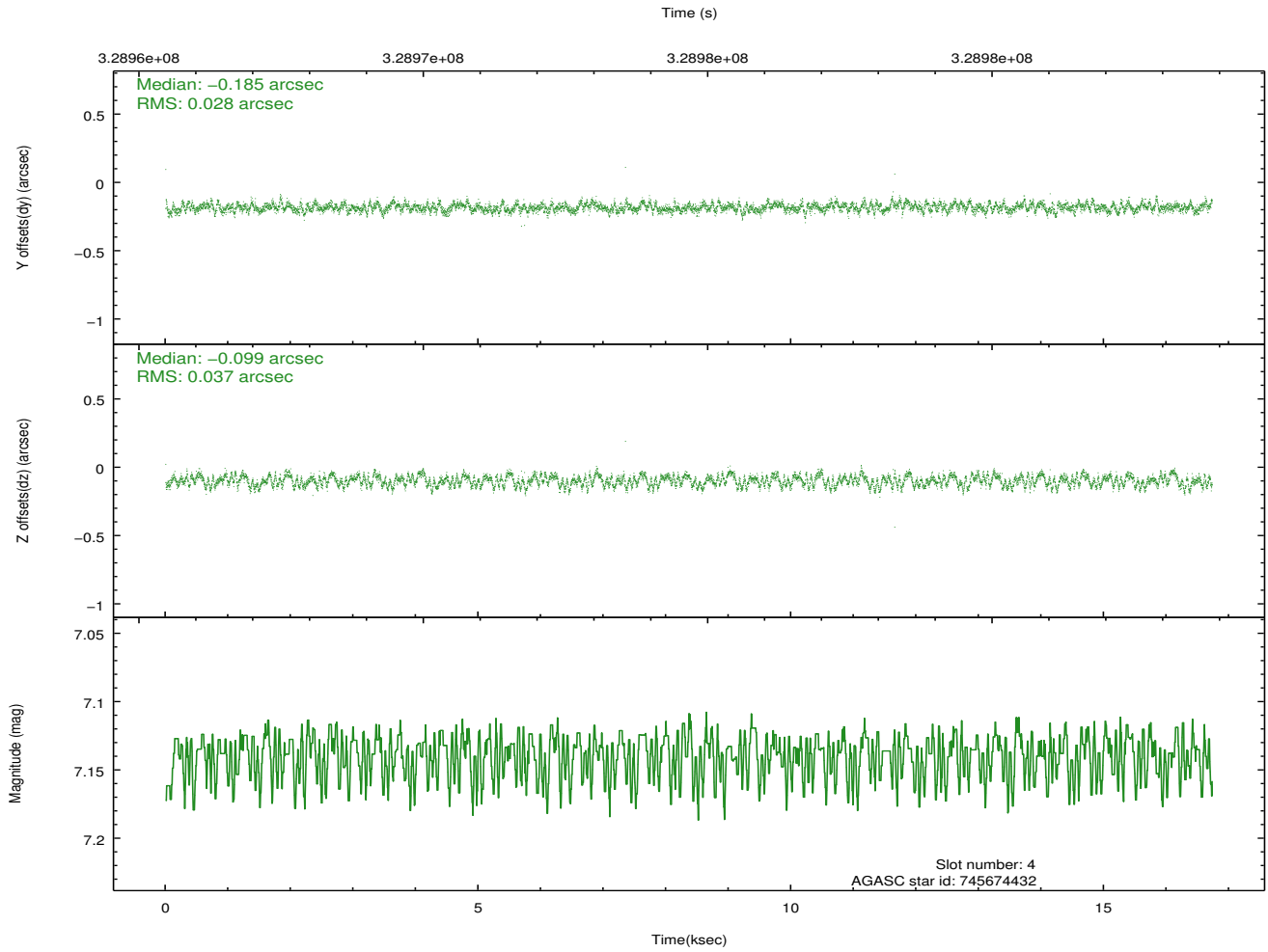
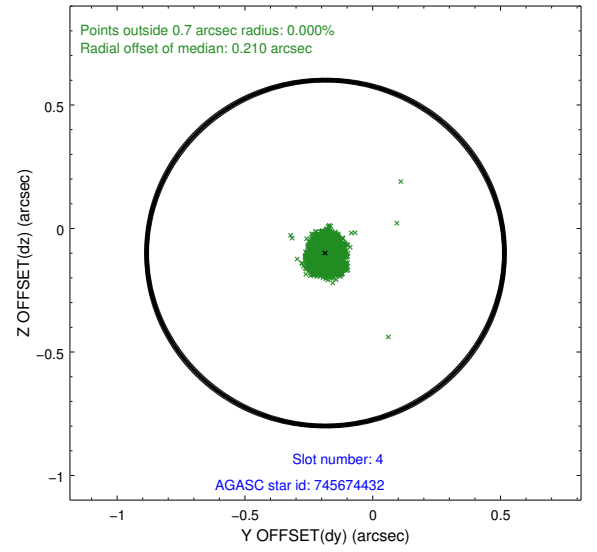
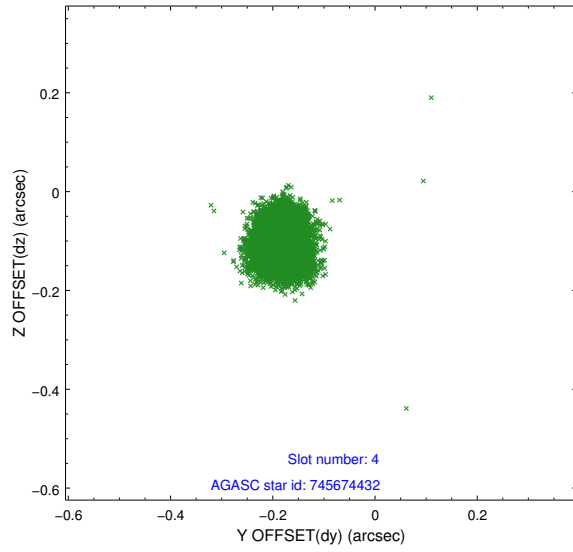
slot	status	id	mag	n_pts	med_dy	med_dz	dr1	dr2	ra	dec	mean_y	mean_z
0	FID	ACIS-I-2	6.92	4079	-0.074	-0.054	0.014	0.026	0.000000	0.000000	-767.63	-844.39
1	FID	ACIS-I-4	6.93	4079	0.170	0.061	0.009	0.016	0.000000	0.000000	2146.55	1061.79
2	FID	ACIS-I-5	6.99	4080	-0.198	0.061	0.013	0.021	0.000000	0.000000	-1821.26	1059.90
3	GUIDE	745671608	9.17	8148	0.196	0.072	0.113	0.175	275.327786	-13.786724	-588.39	-1307.29
4	GUIDE	745674432	7.14	8160	-0.185	-0.099	0.049	0.077	274.729377	-13.541343	1123.48	185.76
5	GUIDE	745675656	7.96	8158	-0.088	-0.046	0.077	0.123	274.656383	-13.977352	-175.95	1102.29
6	GUIDE	745680352	9.02	8157	0.004	-0.080	0.096	0.155	274.602320	-14.174957	-733.61	1583.49
7	GUIDE	745676512	8.97	8154	0.069	0.153	0.069	0.114	275.415079	-14.258251	-2247.08	-833.76

2.4 Star Slots

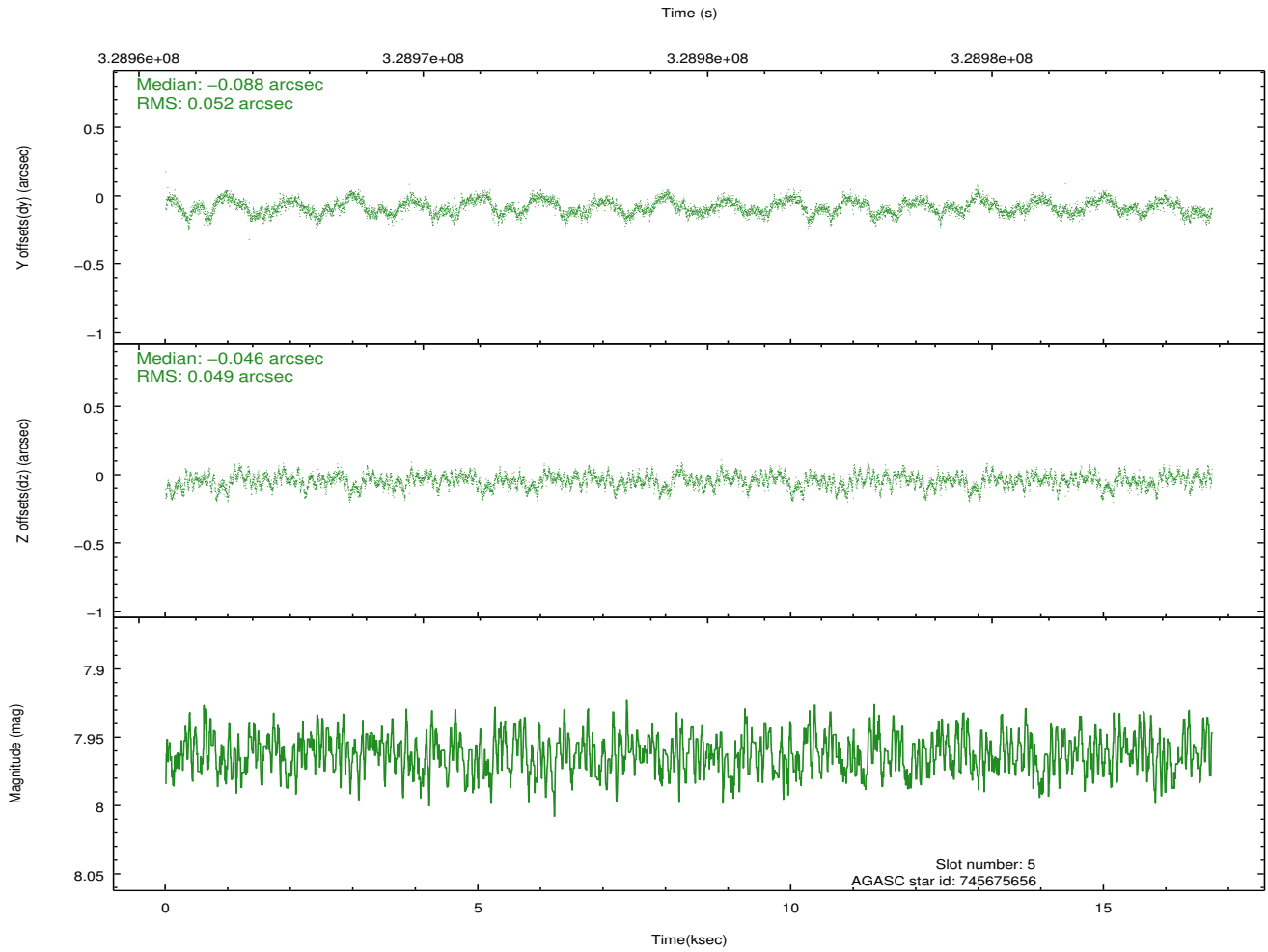
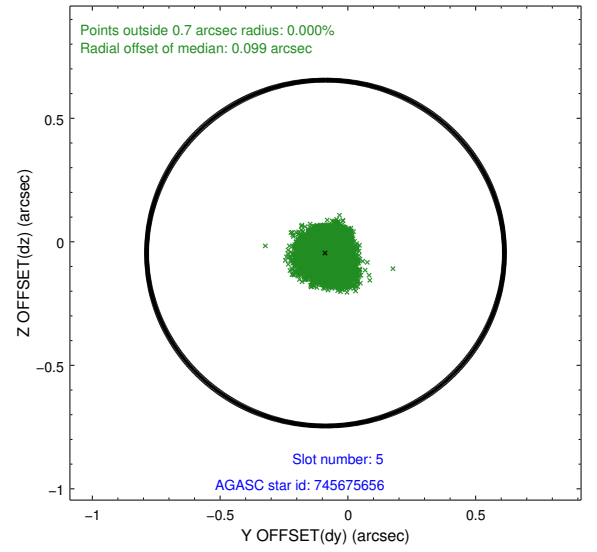
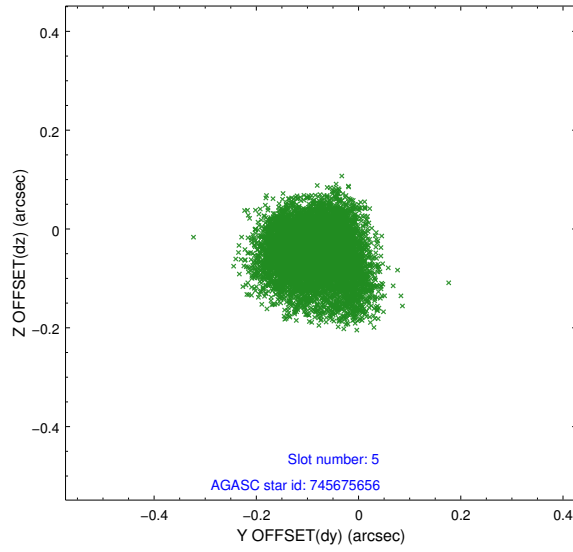
2.4.1 Slot 3



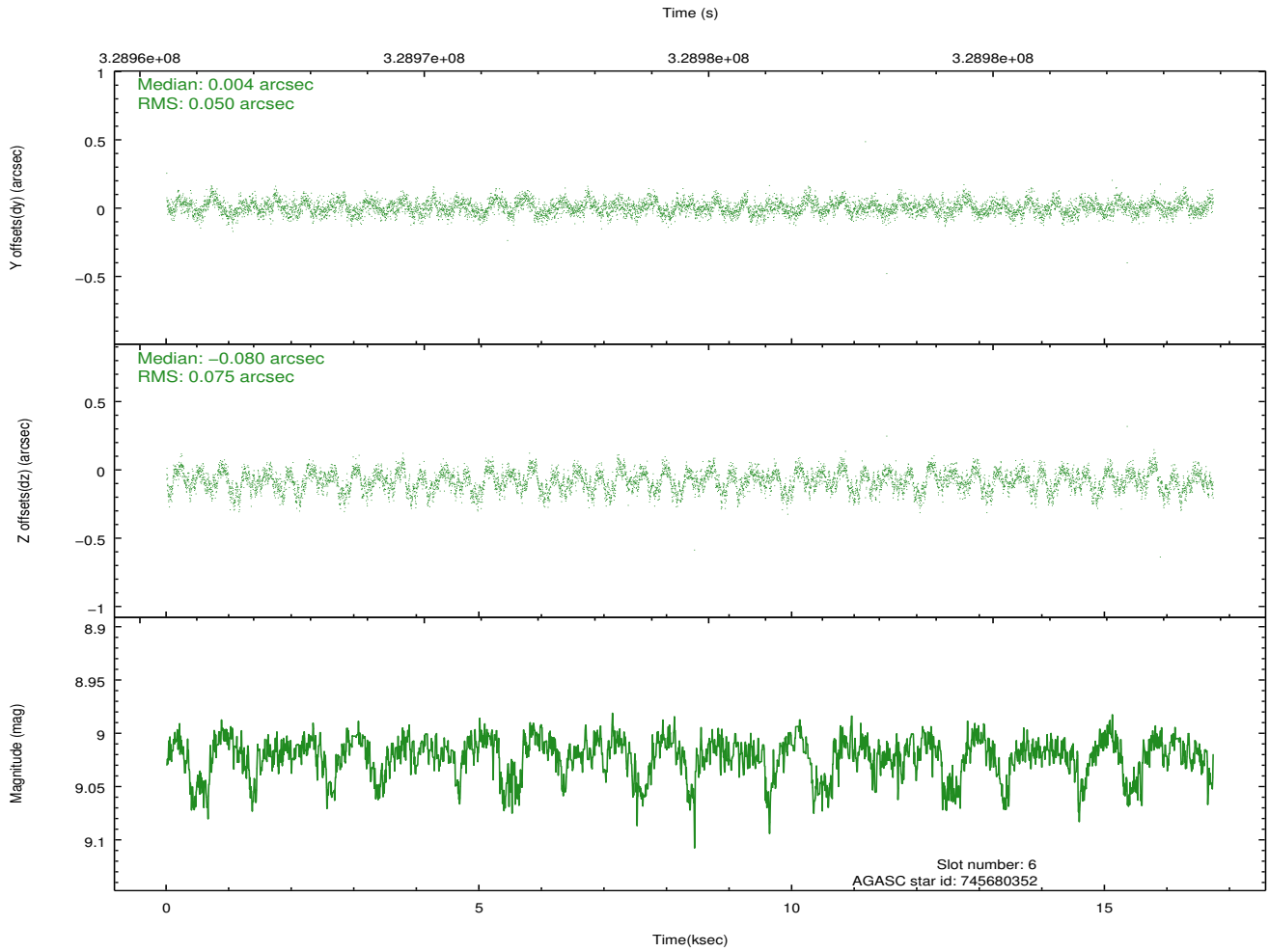
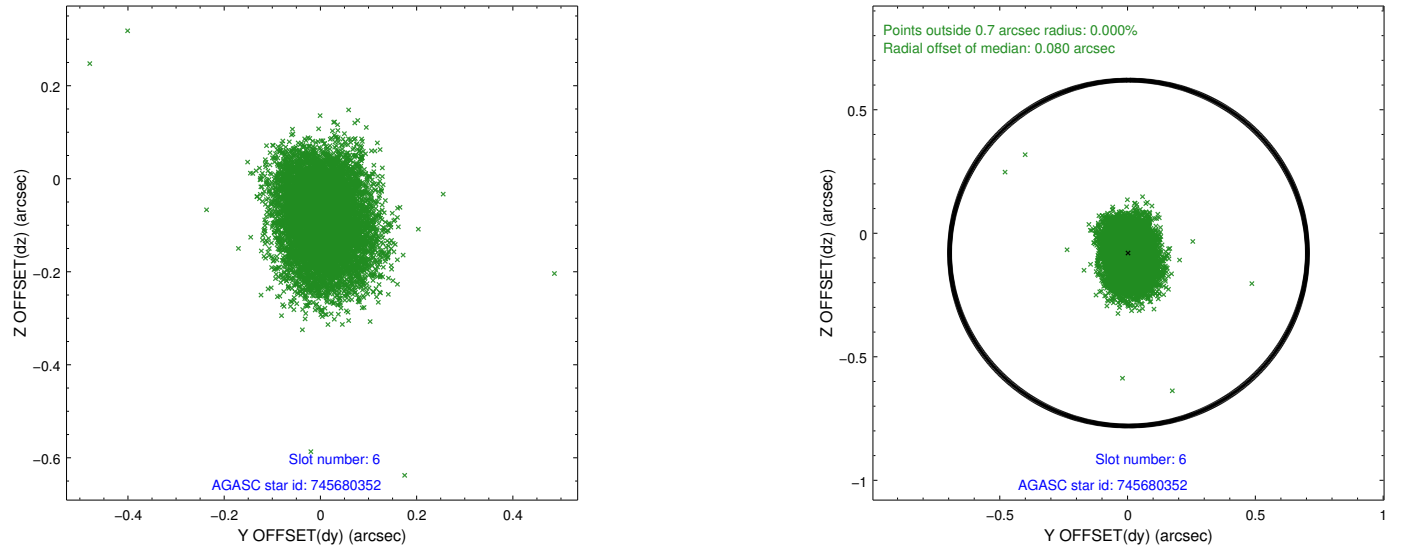
2.4.2 Slot 4



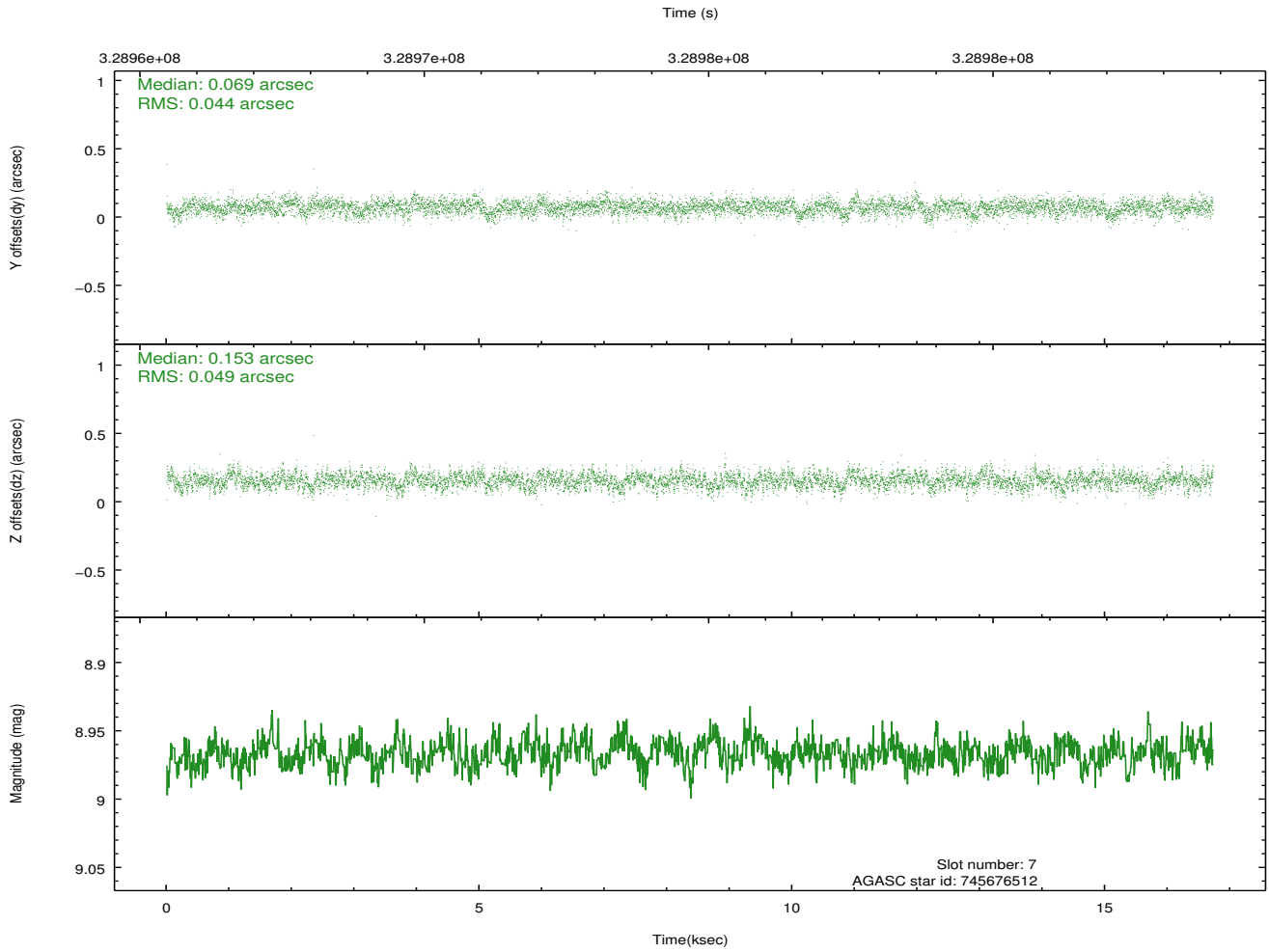
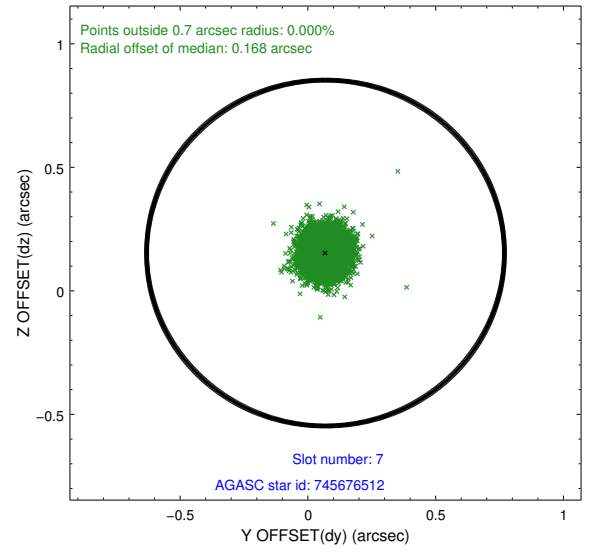
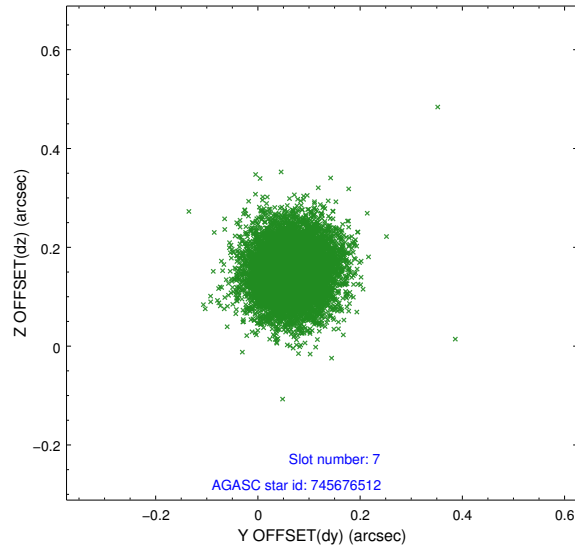
2.4.3 Slot 5



2.4.4 Slot 6

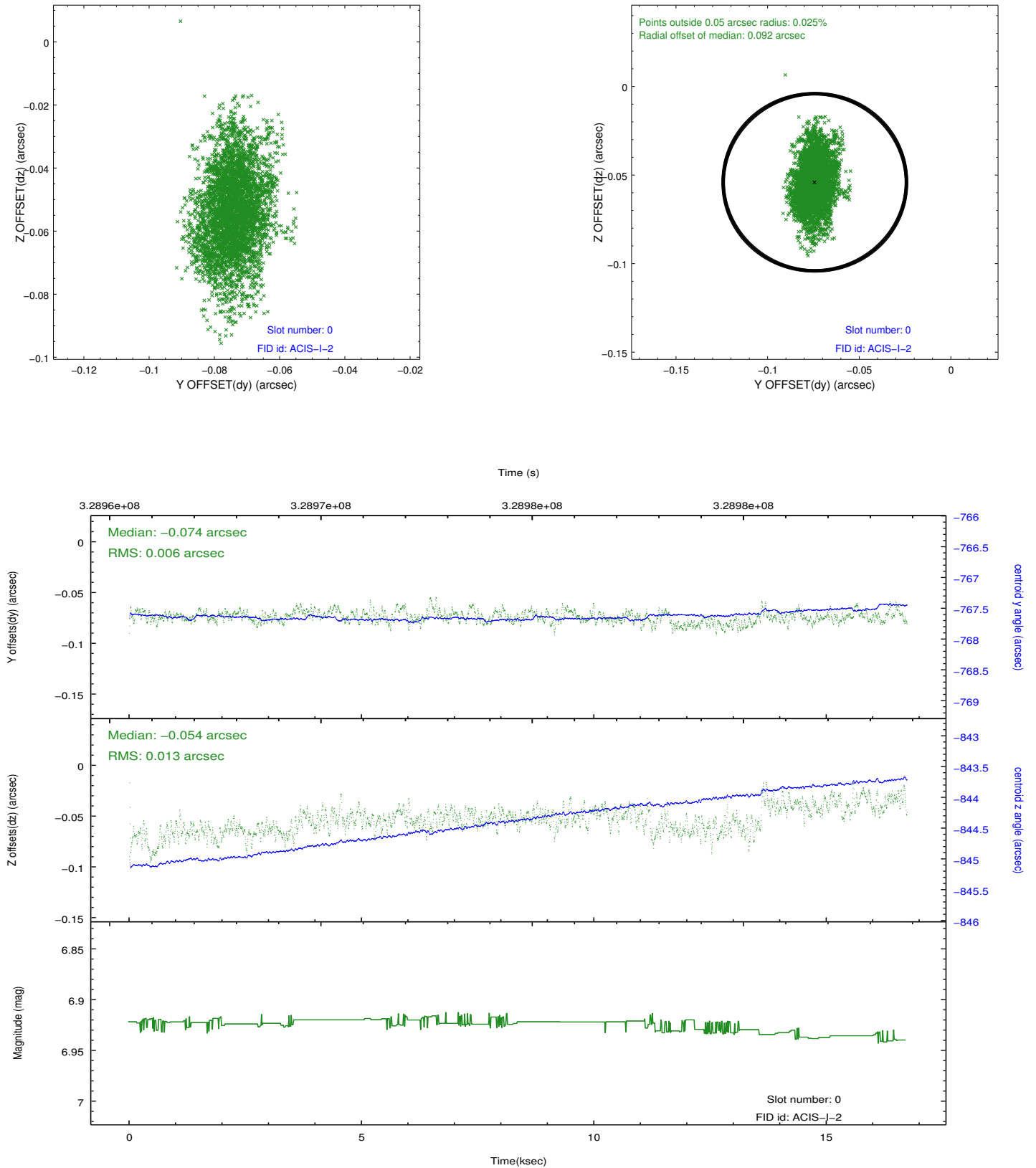


2.4.5 Slot 7

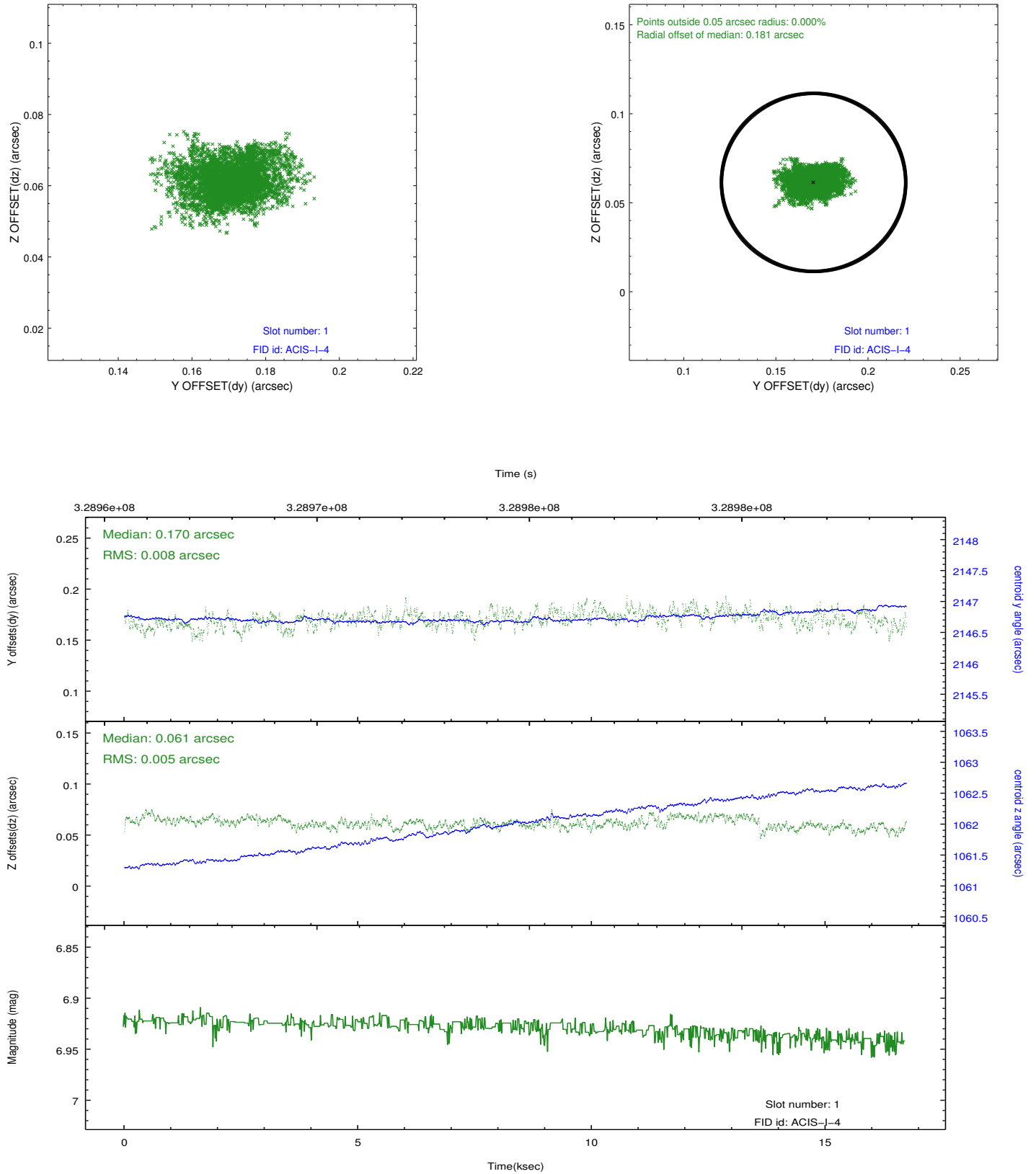


2.5 FID Slots

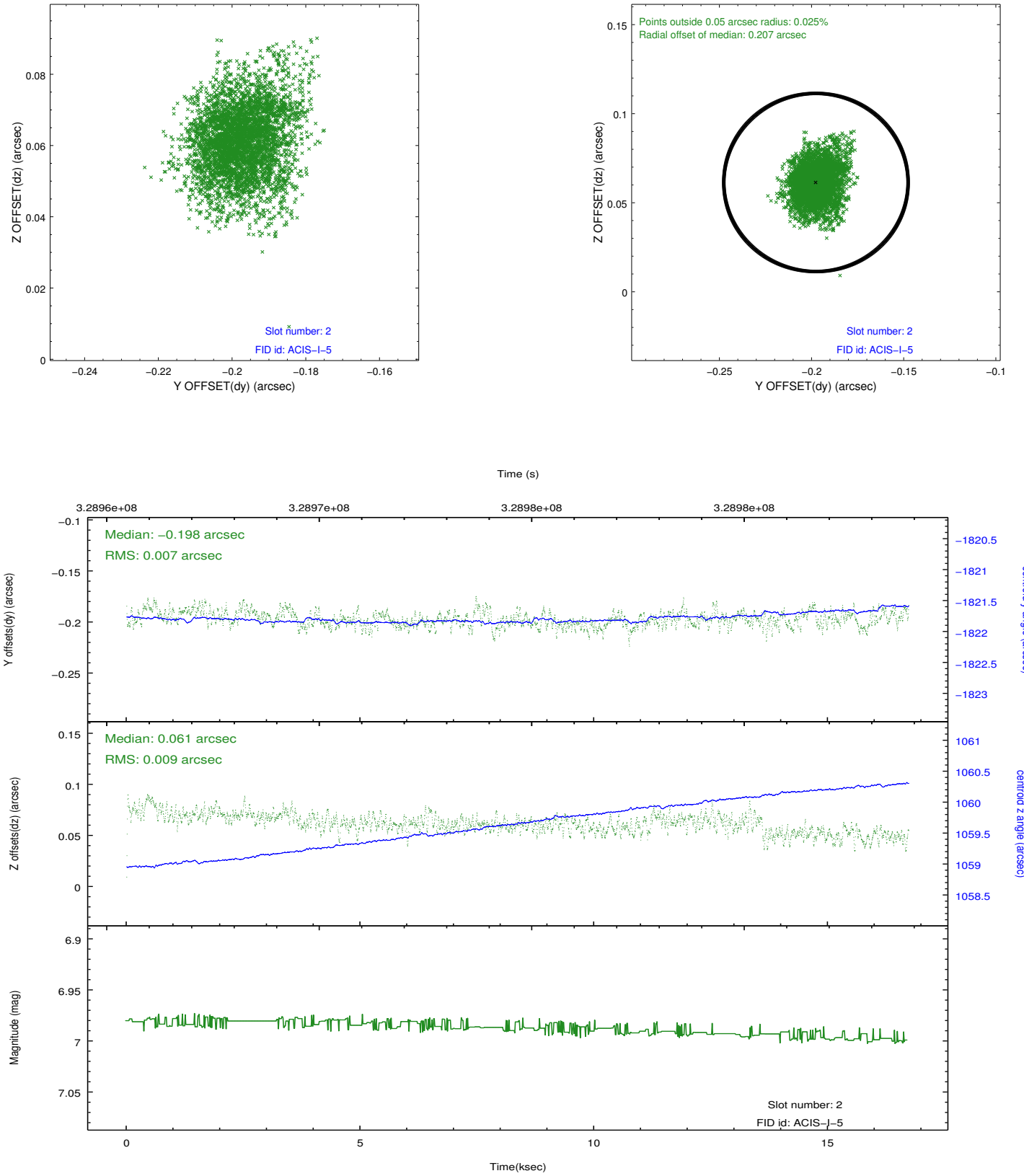
2.5.1 Slot 0



2.5.2 Slot 1



2.5.3 Slot 2



A Summary

A.1 Status

V&V Scientist	Beth Sundheim
V&V Date (YYYY-MM-DD)	2012.05.22
V&V Edition	1
V&V Disposition and Status	OK
V&V Charge Time	16.7213591

A.2 Comments